

Paris

KENTUCKY

Sanborn Map & Publishing Co. Limited
 117 BROADWAY, NEW YORK

SCALE 50 FT TO AN INCH
August 1886

POPULATION 5000
 PREVAILING WINDS
 SO WEST
 WATER FACILITIES
 NOT GOOD
 13 PUBLIC CISTERNS
 FIRE DEPARTMENT, VOLUNTEER
 OF 20 MEN, 1 STEAM FIRE ENGINE
 1 HAND ENG. 2 HOSE CARTS
 1600 FT. 2 1/2 IN. HOSE, 1 HOOK
 & LADDER TRUCK

Paris, Ky.
 August, 1886

The undersigned have examined the new maps of Paris, Ky. made by the Sanborn Map & Publishing Co. of New York, and find to satisfactory complete and correct. We recommend it to be used by the Insurance loss generally.

W. W. Forman, Pres. of Board
 Matt Kelly, Vice Pres. of Board
 D. L. Turner, Secy. of Board
 Thomas & Parish, Agents
 S. C. Parish, Agent
 Northcutt & McCaskey, Agents
 W. H. Lovell, Agent
 John S. Doyle, Jr.
 John S. Doyle
 Jones and Dickey
 J. A. McClintock

INDEX.

STREETS.	AREAS.	INDEX.
Ash, 4	Pleasant, 145-230	Jugels, G. W., Livery, 3
Bank Row, 2	Walnut, 231-256	K. C. R. R. Freight House, 2
Broadway, 2		M
Cedar, 4		Masio, W. W., Warehouses, 2
Cherry, 4		Methodist Episc. Church, 3
Chestnut, North side, 3		N
" South " , 4		Neely, R. J., Warehouses, 2
Church, North side, 2		O
" South " , 3		Oberly, W. T., & Co., Tobacco Warehouse, 2
High, 2		P
" 1-64, 2		Paris Distilling Co., 6
" 65-107, 4		" Milling Co., 2
" 108-185, 5		Pitken & Striver, Pat. Fence M'ys., 2
" 184-265, 4		S
Laurel, 5		St. Paul's A. M. E. Church, 5
Linn, 5		Second Presbyterian Church, 3
Locust, 3		Shawhan & Abar, Distillery, 8
Main, 2		Spear & Stuart, Grain Warehouse, 2
" 1-70, 2		T
" 71-150, 2		Tarr, W., Warehouses, 2
" 151-234, 4		Thomas, J. M., Warehouse, 5
" 235-314, 5		" & Son, Lumber Yard, 5
Main Cross, 2		" Planing Mill, 8
Maple, 5		" J. W. & Son, Tobac. Warehouse, 4
Mulberry, 3		Thurston Hotel, 3
Pine, North side, 4		Torrey, H., Distillery, 8
" South " , 5		Turney & Clark, Livery, 2
Pleasant, 2		W
" 1-70, 2		Washington M'g & Min'g Co.'s Lum. Y'd., 5
" 71-144, 2		White, G. G., & Co., Distillery, 6
		" Warehouses, 2

* Indicates only one side of Street shown.



NO. 3

CHURCH

SEE

BROADWAY

BANK ROW

HIGH

MAIN

PLEASANT

WALNUT

Scale of Feet.

Creek

Stoner

PARIS MILLING CO.

WIGHT WATCHMAN & LIGHTEN, NO CLOCK.
FRESH CORN, HONEY SWEETS,
LARD & LARD TINS,
FRUIT & BREAD TINS,
CANNED FRUIT & VEGETABLES,
CANNED MEATS & BUCKETS,
MIXED PAINTS, OILS,
PREPARED
COPPER & BRASS PER
24 HOURS.
MARCH 1, 1886
SPECIALS & BROWN MEAT, 50¢ PER LB.
1 BUCKETS ONLY
2 NEW STONE & 100 MORE PAINTS & OILS
3 SPECIALS & BROWN MEAT 50¢ PER LB.
4 BUCKETS ONLY

GRAIN
WARE HO.

PLUMBERY LUMBER YARD

FREIGHT W.H.O.

W.W. MARISSIE WARE HO.

R.B. HUTCHCRAFT WARE HO.

W.W. TARR W.H.O.

R.B. HUTCHCRAFT HEMP W.H.O.

G.G. WHITE & CO. FREE WARE HO. NO. 7 G.

W.W. MARISSIE WARE HO.

W.W. MARISSIE WARE HO.

W.W. MARISSIE WARE HO.

W.W. MARISSIE WARE HO.

W.W. MARISSIE WARE HO.

W.W. MARISSIE WARE HO.

W.W. MARISSIE WARE HO.

W.W. MARISSIE WARE HO.

W.W. MARISSIE WARE HO.

W.W. MARISSIE WARE HO.

W.W. MARISSIE WARE HO.

W.W. MARISSIE WARE HO.

W.W. MARISSIE WARE HO.

W.W. MARISSIE WARE HO.

W.W. MARISSIE WARE HO.

W.W. MARISSIE WARE HO.

W.W. MARISSIE WARE HO.

W.W. MARISSIE WARE HO.

W.W. MARISSIE WARE HO.

W.W. MARISSIE WARE HO.

W.W. MARISSIE WARE HO.

COURT

HO.

HO.

HO.

HO.

HO.

HO.

HO.

HO.

HO.

HO.

HO.

HO.

HO.

HO.

HO.

HO.

HO.

HO.

HO.

HO.

HO.

HO.

HO.

HO.

HO.

HO.

HO.

HO.

HO.

HO.

HO.

HO.

HO.

HO.

HO.

HO.

HO.

HO.

HO.

HO.

HO.

HO.

HO.

HO.

HO.

HO.

HO.

HO.

HO.

HO.

HO.

HO.

HO.

HO.

HO.

HO.

HO.

HO.

HO.

HO.

HO.

HO.

HO.

HO.

HO.

HO.

HO.

HO.

HO.

HO.

HO.

HO.

HO.

HO.

HO.

HO.

HO.

HO.

HO.

HO.

HO.

HO.

HO.

HO.

HO.

HO.

HO.

HO.

HO.

HO.

HO.

HO.

HO.

HO.

HO.

HO.

HO.

HO.

HO.

HO.

HO.

HO.

HO.

HO.

HO.

HO.

HO.

HO.

HO.

HO.

HO.

HO.

HO.

HO.

HO.

HO.

HO.

HO.

HO.

HO.

HO.

HO.

HO.

HO.

HO.

HO.

HO.

HO.

HO.

HO.

HO.

HO.

HO.

HO.

HO.

HO.

HO.

HO.

HO.

HO.

HO.

HO.

HO.

HO.

HO.

HO.

HO.

HO.

HO.

HO.

HO.

HO.

HO.

HO.

HO.

HO.

HO.

HO.

HO.

HO.

HO.

HO.

HO.

HO.

HO.

HO.

HO.

HO.

HO.

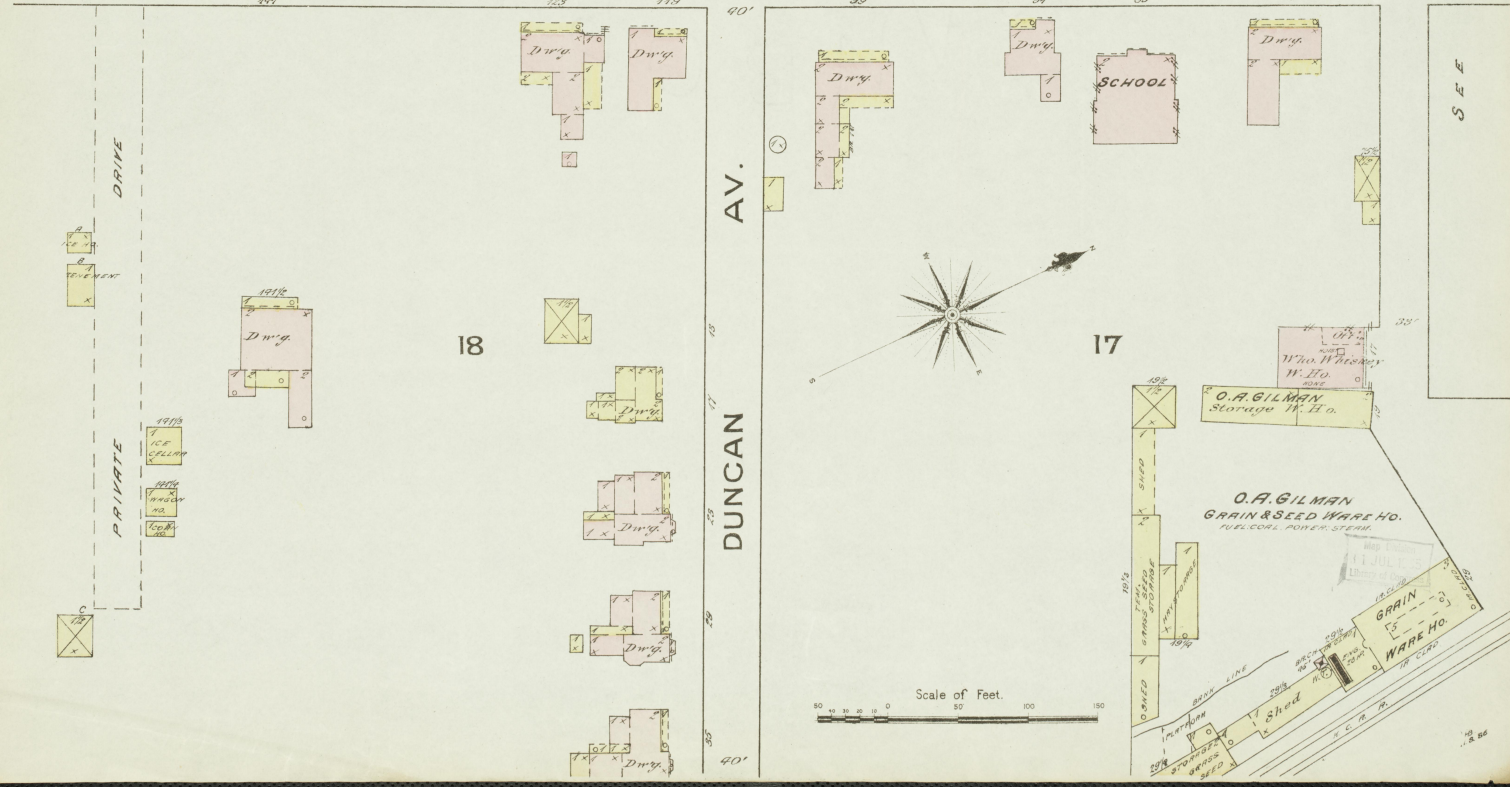
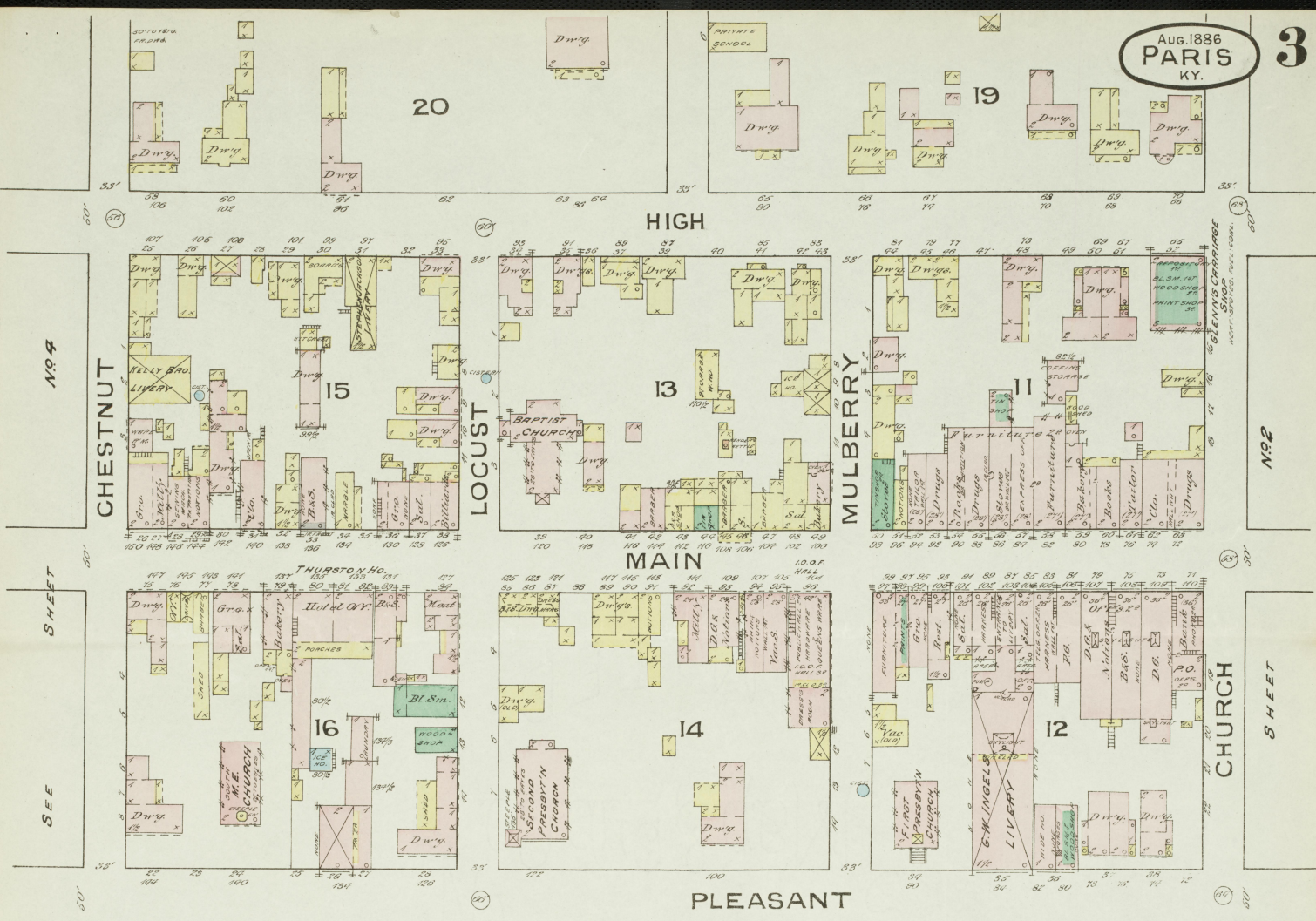
HO.

HO.

HO.

HO.

HO.



SEE SHEET NO. 4

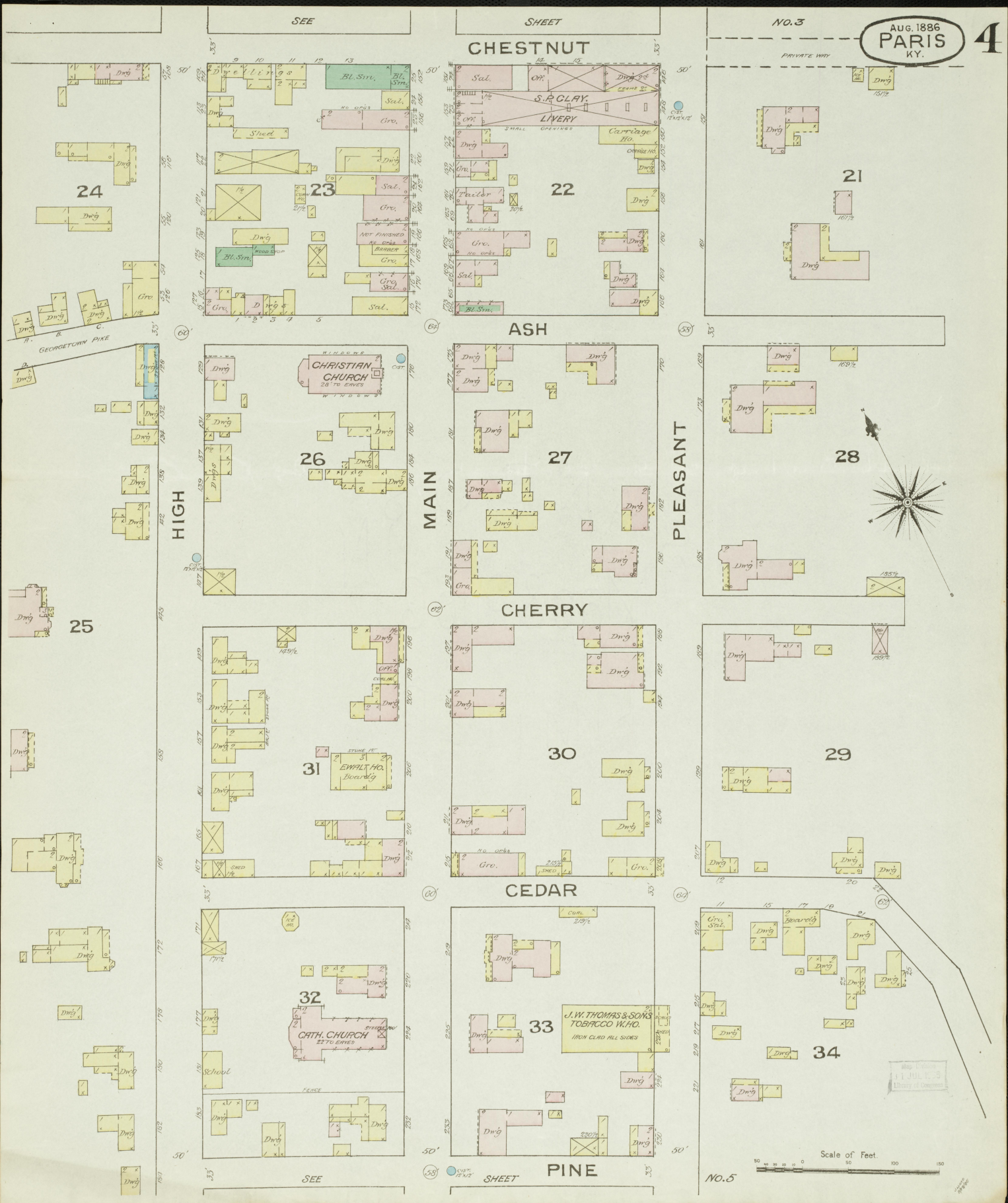
SEE SHEET NO. 2

SEE SHEET NO. 4

SEE SHEET NO. 2

SEE SHEET NO. 2

SEE SHEET NO. 2



Aug. 1886
PARIS
KY.

4

21

ASH

27

PLEASANT

28

CHERRY

30

29

CEDAR

33

34

PINE

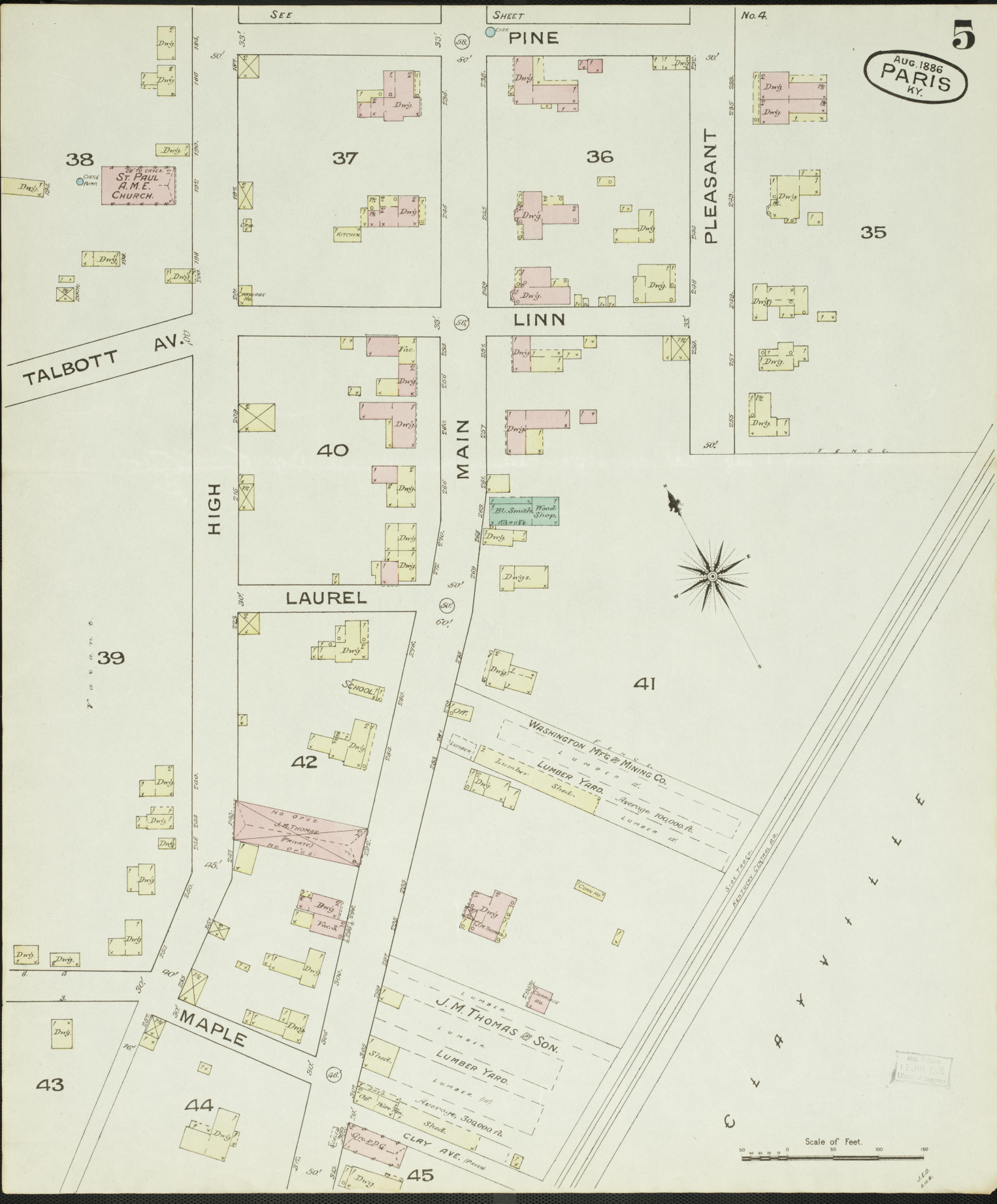
Scale of Feet
0 50 100 150

No. 5

Map drawn
11 JULY 1886
Library of Congress

AUG. 1886
PARIS
KY.

No. 4.



38
St. Paul A.M.E. Church

37
Kitchen

36
Dnry.

Dnry.

Dnry.

Dnry.

Dnry.

35

HIGH

40
Fac.
Dnry.

MAIN

41
Bl. Smith Wood Shop
Dnry.

LAUREL

42
SCHOOL
Dnry.

NO OPER. J.M. THOMAS (PRIVATE) NO O.P.S.

WASHINGTON MFG & MINING CO.
LUMBER YARD
Average 100,000 ft. LUMBER

39

Dnry.

43

MAPLE

44
Dnry.

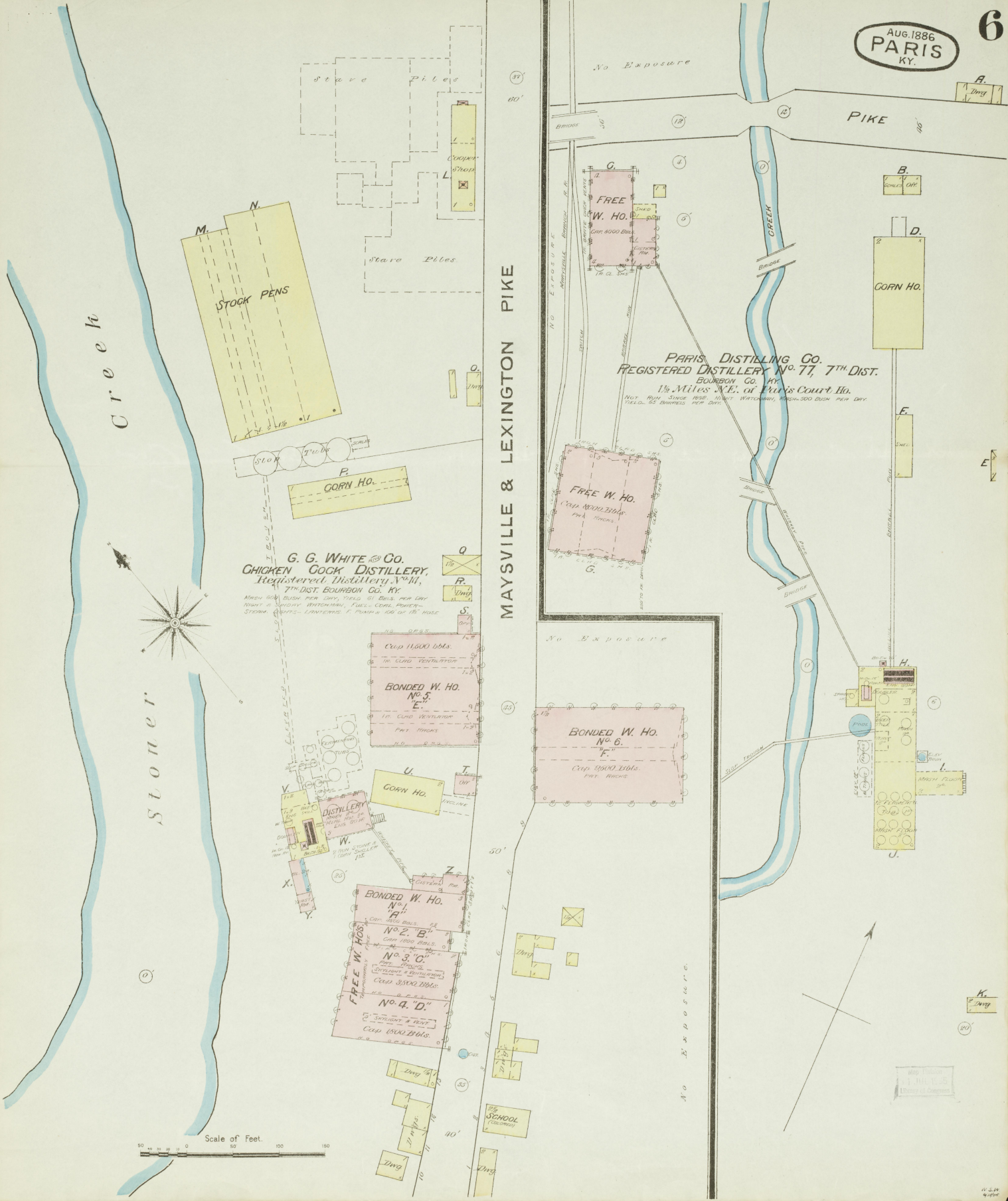
45
CLAY AVE. (Dnry)

J.M. THOMAS & SON
LUMBER YARD
Average 30,000 ft. LUMBER

Scale of Feet.
0 50 100 150

Wm. H. Jones
Lithographer

J.E.D.
1886



G. G. WHITE & CO.
CHICKEN COCK DISTILLERY,
Registered Distillery No. 77,
7th Dist. Bourbon Co. Ky.
NEED 2000 BUSH PER DAY, FIELD 50 BBLs PER DAY
NEED 4 SQUARE WATCHMEN, FINE - COOL NIGHTS
STEAM - LIGHTS - LANTERNS - F. POWER - 100 OF 15' HOSE

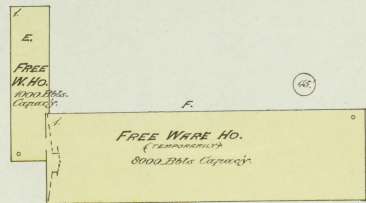
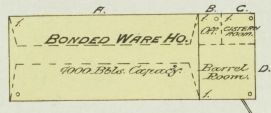
PARIS DISTILLING CO.
REGISTERED DISTILLERY No. 77, 7TH DIST.
BOURBON CO. KY
1 1/2 Miles N.E. of Paris Court Ho.
NEED 2000 BUSH PER DAY, FIELD 50 BBLs PER DAY
NEED 4 SQUARE WATCHMEN, FINE - COOL NIGHTS
STEAM - LIGHTS - LANTERNS - F. POWER - 100 OF 15' HOSE

Scale of Feet.
0 50 100 150

Map drawn by
J. H. L. S.
Engineer & Architect

NO EXPOSURE

VACANT

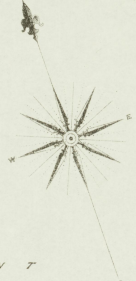


FORD AND BOWEN'S REGISTERED DISTILLERY.
No. 10, 7. DIST. BOURBON Co. KY.

Makes 300 Bushels per Day
2 Cold, 1250 Gallons
WATER SILENT AND PURENESS. FEELI COULD
IMPROVE BY BEING A DISTILLERY IN PLACE OF
THE OTHER TWO.
3 MILES NORTH OF PARIS
COURT HO.

BUTTERN HILL

DRIVE



VACANT

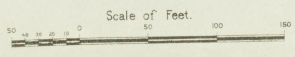


PIKE

STONE DISTILLERY

STONER

CREEK



W. B. BOWEN

