



Gay &  
Lesbian  
Services  
Organization

# The GLSO News

January 2009



A Publication of the Lexington Gay Service Organization

Volume 31 Number 1

## Touched By Change

*Something changes in me when I  
witness someone's courage  
They may not know I'm watching, I  
may not let them know...  
Something changes in me any time  
there's someone standing  
For the right to be completely all the  
good things that we are.*

-Holly Near from *Change of Heart*

It is, indeed, a time of change: a time of bailouts and layoffs, nationwide foreclosures and shrinking IRAs. But, it is also a time of hope and promise: the hope always ushered in with the dawn of another new year. And this particular season, there is the promise of a new president offering "A Change We Can Believe In."

SisterSound, Lexington's own women's chorus, will be celebrating change of all forms and fashion January 31 when her members will be singing about all sorts of change- both welcomed and not. The group will be offering hope with pieces including *Change of Heart*, *What a Wonderful World*, *Tomorrow*, *Imagine* and *Here Comes the Sun*, but will also remind us all that change is not always so celebrated. Numbers such as *Housekeeper's Tragedy* and *Stormy Weather* conjure up some of those not-so-pleasant journeys.

And as a real tribute to change, the group will offer the premiere of a new piece of music, never before performed

*Continued on the next page*

## The Tranny Roadshow

The Tranny Roadshow is coming to the UU church on Thursday, January 15, starting at 7 pm. Co-sponsored by Interweave and the GLSO, this should be an evening of fun and educational entertainment.

The Roadshow is composed of an eclectic group of artists, each one self-identified as transgender, and includes poets, filmmakers, storytellers, rock bands, comedians, opera singers, puppeteers, actors, folk singers, photographers zinesters and more. The cost will be \$10 and there will be tickets available at the Pride Center, from Mary Crone or at the door.

Although the Tranny Roadshow is done entirely by transpeople, it is not exclusively for transpeople. It is a raucous evening of entertainment, open and accessible to people of all backgrounds. Most of us are experienced performers, and while our goals do include challenging people and making

*Cont. on next page*

SisterSound Winter Concert

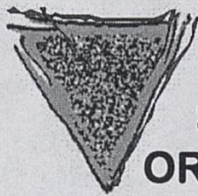
**Touched By Change**

January 31 at 8 pm

Singletary Center







**GAY  
LESBIAN  
SERVICES  
ORGANIZATION**

Lexington, KY

Incorporated as  
The Gay Service Organization

P.O. Box 1172 Lex., KY 40588

[www.glsopc.org](http://www.glsopc.org)

## **GLSO NEWS**

**VOLUME 31 NO. 1**

### **News Editors**

*Mary Crone & Sarah Phillips*

### **Assembly & Distribution**

*Debby Hemstock*

### **Pride Center Office Manager**

*Bill Chandler*

859-253-3233

### **GLSO BOARD**

Mary Crone, President  
Ginger Moore, Secretary  
Sondra Mellott, Treasurer

Thomas Collins

Jane Minder

Virginia Morman

Teri Mosier

Terry Mullins

Karen Taylor

Dana Wallingford

Dennis Wheatley

**GLSO Membership  
& Newsletter  
Individuals/Couples  
\$20 per year**

*SisterSound Concert continued from page 1*

in a public venue. *The Lost Lagoon*, dedicated to SisterSound, will find its first audience that last day of January and will be celebrated by all comers with a reception. Its composer, Rick Barlett, will be on hand to greet all listeners.

So, change into your concert attire- whether it be comfortable jeans or an evening gown- and head to the Singletary Center for the Arts Recital Hall January 31 at 8:00. Tickets are \$11 for adults and \$6 for students and are available at the box office or by phone.

Singletary Center for the Arts Ticket Office Hours: 10am - 5pm (M-TH), 10am - 6pm (F), 12pm - 5pm (Saturdays, if there is a ticketed performance), phone: 859.257.4929.

*Tranny Roadshow continued from page 1*

them think, our most important goals are to entertain them, make them laugh, and make them dance.

Stationary art (i.e. photography and sculpture) is displayed, but most of the presentation is the live show, a unique variety show where the expression of gender and the expression of self are inseparable. The show is a fluid entity, changing to suit the artists and the crowd, but always it is full of intelligence, fun and humor.

Some pieces of each show focus specifically on gender, but many others do not. All people have multiple identities, which overlap, intertwine and impact each other in different ways. One of the aims of the Tranny Roadshow is to present transpeople as we are - as whole, multi-faceted people. We are not only trannies, we are singers, filmmakers, dancers, writers, jugglers, etc. And our art expresses many things, of which gender is only one. In the show, we present a wide spectrum of gender identities, a brilliant array of living art, and the ties that bind these identities to our artwork and to the world



# Community News

## *Supporting One Another Through Grief: A GLBT Partner Loss Support Group*

Hospice of the Bluegrass is hosting a support group for gays, lesbians, bisexuals, and transgender people who have experienced the death of a partner. Gathering together and sharing experiences, thoughts, and feelings with others offers practical and emotional support.

The group will focus on the grief process, coping tools, self-care and issues common to all after the death of a partner and those unique to this community. The group meets for five sessions on Saturday mornings 10 to 11:30, February 28, March 7, 14, 21 and 28.

The group meets at Hospice of the Bluegrass Center for Grief and Education (2312 Alexandria Drive-Lexington, KY.) To receive more information or to register for the group, please call (859) 277-2700, or email [lcaudill@hospicebg.org](mailto:lcaudill@hospicebg.org).

## **TransKentucky**

TransKentucky meets on the first Saturday of each month at 7:30pm. We are a support, social, and resource group. Our mission is to provide a safe place for transgender individuals and others who do not fit the standard gender norms. We support each other by offering advice, resources and insights from our own experiences. This is not a therapy group.

Family, friends, and supportive community members are invited to attend to gain understanding of issues concerning gender presentation, identity, and variance. Meetings are free and you may dress however you feel comfortable. For info and place: [TransKentucky@gmail.com](mailto:TransKentucky@gmail.com)

## **Lexington Pride Festival 2009**

### **Stonewall Lives: Celebrating Our Past, Forging Our Future**

We have a date and place! The Lexington Fayette Urban County Government has given approval for the Pride Festival 2009 to be in Cheapside Park on Saturday, June, 28. That last weekend in June is the 40th anniversary of the 1969 Stonewall Riots, which we celebrate as one of the key events in the GLBT Civil Rights Movement. We commemorate that event in our theme for the festival, "Stonewall Lives: Celebrating Our Past, Forging Our Future."

### **Logo Design Contest**

Check out our web site at [www.lexpride.com](http://www.lexpride.com) where guidelines for the festival logo design contest will be posted. You are also encouraged to vote on the slogan for the official wristbands. The website is being updated frequently.

If you are interested in volunteering look over the list of sub-committees on page 6. We could always use a few more volunteers



*"Keep the love you find,  
Get the love you want!"*

**Jessica Bollinger LCSW**  
**Imago Relationship Therapist**  
EMDR Trauma Work  
Couples, Family, Individual  
[imagoconnection.com](http://imagoconnection.com) 552-6533



## Bluegrass Women's Network

The Bluegrass Women's Network is an active Central Kentucky social group for adult women who identify as lesbian.

Membership to this network is free and there are no obligations. We have a variety of activities such as monthly brunches, monthly potluck dinners, plays, movies, parties, and whatever else we manage to dream up! To announce events and share information,

the Bluegrass Women's Network has a private/hidden Yahoo group website. It is not listed in the Yahoo Directory, and can only be accessed by group members.

Moderators/Facilitators for the Bluegrass Women's Network are Debby and Lynn. If you are interested in joining the BGWN please send a request to debby-woman@gmail.com and the link to the BGWN Yahoo group will be sent to you. Then you may apply to join. We are looking forward to meeting YOU soon!

---

## SisterSound Invites You

(and your inner child) to join them in singing from your heart.

Deck the halls with too much stress! Fa-la-la-la. La-la-la-la! Do you spend half of your year relaxing in the "Christmas Season Free Zone" and the other half wondering how you are going to get everything done between Thanksgiving and New Year's?

Do you vow every year that somehow you will find time for yourself, not just during the busy holiday season, but all year long? Do you wish for just a little time where you can turn off that cell phone and indulge your inner child?

Ladies, if you answered "yes" to any of these questions, have I got a great gig for you! If you are anything like me, it's hard to find a place where you can just let loose and not feel guilty about taking that time just for you.

I push myself so hard to get everything done that "playtime" always seems to be pushed aside. Luckily, about 5 years ago, I decided to join Sister Sound, and now I have my very own weekly play date!

Every Sunday evening I gather with my fellow sisters and our very own Mr.

Sister (our choir director John Roarke) for a few hours of singing, snacking and fellowship. We turn our cell phones off (or to vibrate if you just can't be off the grid) and begin our warm-ups. John and our newly American pianist Oksana lead us through deceptively simple exercises that not only get our voices ready but also train our ears and minds to listen to each other.

The outside world with all its pressures and deadlines fades away. The only thing I am responsible for is watching John and singing until his arms stop waving. It truly is a little slice of heaven for me.

And part of the beauty of Sister Sound is that you don't have to have any musical background to join. You don't have to even know if you are a soprano or an alto. We take all voices. And we take all women who house all those voices too.

Sister Sound truly is diversity in action. Regardless of who you love, or how you choose to live your life, we all belong in Sister Sound. And we get along fairly well. . . considering how different we all are!

So whether you are a soprano, an alto, or even perhaps a bi-sectional, come join us and you can have your own weekly play date too!



# **TOUCHED BY CHANGE**

**Part 1 of SisterSound's  
2009 Concert Season**



**Saturday, January 31, 8:00 pm**  
**UK Singletary Center for the Arts**

**Ticket prices (including \$1 service fee): Adults: \$11.00; Children: \$6.00**  
Available at Singletary Center,  
online at <http://www.uky.edu/SCFA/tickets.php>, or by phone at 859-257-4929

<http://sistersound.org>

[sistersound@hotmail.com](mailto:sistersound@hotmail.com)



# Pride Center

Phone 859 253-3233

389 Waller Ave.

**Office Hours 10 to 3 Mon.-Fri.**

## **Downtown Pride Festival 2009 Stonewall Lives**

If you are willing to donate some time, email us at [Lexpride@gmail.com](mailto:Lexpride@gmail.com) and let us know which committee you are interested in joining. You can call the Pride Center at 859 2253-3233 and leave a message.

Fundraising      Entertainment  
Booths and Concessions  
Activities      Volunteer Coordination  
Marketing and Publicity

## **DISCUSSION GROUP EVERY WEDNESDAY 7PM PRIDE CENTER 389 WALLER**

The Discussion Group is a support group for all people. We talk about a wide range of topics and enjoy each other's company. Please join us anytime.

### **Insight Group**

**Friday, Jan. 2 Pot Luck**

**Friday, Jan 16 Movie Night  
Pride Center 7 pm**

**Our very own  
GLSO Cookbook  
this is to Support  
The PRIDE CENTER**

Send "family" recipes to  
[Thomas\\_gayzebo@yahoo.com](mailto:Thomas_gayzebo@yahoo.com)

## **GARAGE SALE GLSO Needs Your Support**

### **To Keep The Pride Center Open**

There are several ways you can help. GLSO is planning a **Garage Sale** in late February or early March. Please help us by putting aside items to donate to this sale now. Consider volunteering to make the sale a success. We will have more information in the next newsletter about how you can get items to us.

We send out donation requests several times a year. If each of you reading this newsletter would give \$5 that would make a big difference. You could also subscribe to the newsletter (form on page 10).

## **Lexington Lyons & Levi Club**

The Lexington Lyons meet the second Monday of each month at the Pride Center, 389 Waller Ave. at 7 pm. The Lyons are a group of friends that come together to celebrate strength, unity and diversity in order to form a bond within a community that enjoys the Leather/Levi lifestyle.

Join us for our meeting on Monday, January 12 at 7 pm. For more information see [www.lexlyons.org](http://www.lexlyons.org).

### **HIV Testing**

There will not be HIV testing at Pride Center in January. We will start it again in February.



# Mardi Gras Ball

Sponsored by:

*The Imperial Court of Kentucky,  
AVOL, Moveable Feast, and GLSO*

Sunday, February 22, 2009  
Lexington Downtown Hotel

for more information visit our website at: [www.imperialcourtkentucky.org](http://www.imperialcourtkentucky.org)

Net proceeds to benefit the charities of the Imperial Court of Kentucky.



## Revitalized Activism

By: Jessica Martin  
Lexington Fairness

The passage of Proposition 8 in California, along with other anti-gay ballot initiatives, soured an otherwise joyous Election Day. But maybe the vote was a blessing in disguise. This defeat for the community reignited a fire that had become nothing more than flicker.

LGBTQ and allies flooded streets in cities across the country in protest. The media couldn't get enough. They debated and showed footage and images. The gay rights movement had reemerged with a vengeance in just a few hours.

The next move was to remind our fellow Americans that LGBTQ played crucial roles in our country's daily life. So, as a protest mechanism, "A Day Without A Gay" was launched. LGBTQ were encouraged to call in gay to work, halt all spending, and use the day to volunteer instead.

The sentiment is easy to understand – prove the power of the community by showing that we are everywhere and are essential to a strong economy. But due to a number of factors, the day seemed to make a minimal impact. The one thing it did was assure the public that the gay rights movement was still in full swing.

Then, there was *MILK* – the emotional, empowering film about Harvey Milk, the first openly-gay elected official in the United States. The film gave the audience a glimpse into the gay rights movement in the 1970s.

After watching it, you may have resisted an urge to take to the streets. You may have risen to your feet with a sudden surge of pride and self-respect. You may have left more determined than ever to fight for what you believe in. At the very least, you left the theater wondering

about the movement and the level of sacrifice involved in achieving equality.

The election of President-elect Barack Obama was inspiring. Our nation elected a man whose faith is rooted in hope. And, for now, we believe this is the best chance for change. A strong push for equal rights. The repeal of "Don't Ask, Don't Tell." A federal fairness law. Liberal judges on the bench. Respect.

The gay rights movement did not begin with Harvey Milk nor did it die with him. Changing a culture takes time. Social movements take patience. Reverting to complacency dishonors the memory of every person who suffered, bled or died to advance our cause. It is detrimental to our recent momentum. Above all, knowing how far we have left to go, it is irresponsible to future generations.

Yes, the work is exhausting. Yes, it will try your soul. But if there ever was a time to be confident, to state our case, to take the fight to the seats of power, it is now. Make it your New Year's resolution to become an activist in our revitalized movement.

Lexington Fairness encourages you to gather your friends and family and get involved. Join one of our subcommittees (Education and Outreach/Advocacy or Fundraising). Make phone calls or write letters to legislators. Lobby local officials and businesses. Whatever you do – Do it loud! Do it proud! Do it now!

### Other Articles Related to Activism

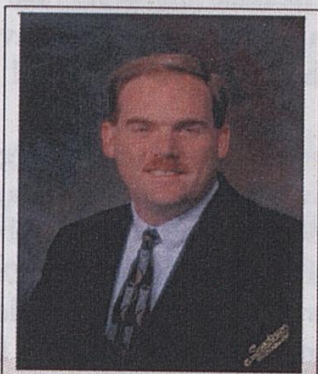
Catherine Opie, Activism through Photography—Page 12

Increase reporting of Violence against GLBT People—page 13

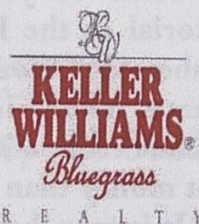
GLSEN study on teen attitudes and behaviors—page 13



# Scott Ackerman Real Estate Service With



**Professional**  
**Results**  
**Integrity**  
**Dedication**  
**Enthusiasm**



Mobile: 859 338-8483

Fax: 859 269-0065

E-mail: Ackermanteam@aol.com

*Serving Lexington &  
All of Central Kentucky*



Call me with all your Real Estate Needs

Commonwealth

**GMAC**  
**Real Estate**



**Teresa Combs, ABR, GRI, QSC**  
Realtor, Sales Associate

Cell: 859-489-1150

Fax: 859-245-5156

E-Mail: [tcombs@commonwealthgmac.com](mailto:tcombs@commonwealthgmac.com)

WEB: [www.commonwealthgmac.com/Tcombs](http://www.commonwealthgmac.com/Tcombs)

### MY ROLE

Your  
**Trusted Advisor**: As your Trusted Advisor, I will listen to your goals and help you reach them with my experience.

Your  
**Skilled Negotiator**: As your Skilled Negotiator, I will help you explore all options, respect confidentiality and represent your interests.

Your  
**Expert Facilitator**: As your Expert Facilitator, I will handle all the details and work to ensure that the sale I put together stays together.

*"I will provide you with excellent service, honesty and support".*



# Charitable Giving

Some of you probably read the editorial in the Herald Leader on December 23 about research into who donates money to charity. The results indicate that political conservatives give a lot more money than liberals.

It is true, however, that a lot of the money conservatives give is to churches. When they took that type of donation out of the mix, they found that liberals and conservatives were much closer. Measuring by percent of income given away, conservatives still give more.

**One paragraph said there is evidence that one of the most generous groups in our country is gays!** Researchers believe that gay people are less likely to have heirs pushing them to keep the wealth in the family.

Not having as many children in our families probably does have an impact. Unfortunately, I don't see that we are all that generous.

If every GLBT person in Lexington would give five or ten dollars to several of our local organizations, we would be much more effective in what we do. Seriously, each person does not have to give a lot; rather, everyone should give a little.

If each person gave to the organization of their choice, major changes would result. Moveable Feast could buy equipment to freeze prepared food thus providing more food to their clients. They could also expand and deliver food to people outside of Lexington.

If GLSO had more income, we could open a larger Pride Center, pay someone to edit this newsletter, and hire a facilitator of youth services. There are many teens out there that we do not reach. Fairness could increase their efforts to reach legislators and change policies at every level.

**One place to start would be to subscribe to this newsletter. The Pride Center needs your financial support to stay open, so give until it feels good.**

If you would like to write about what your organization could do with more money, please send it to me.

## GLSO Needs Your Support

Mail to PO Box 1172, 40588

**Subscriptions help pay Pride Center Expenses**

Name \_\_\_\_\_

Address \_\_\_\_\_

City \_\_\_\_\_ State \_\_\_\_\_ Zip \_\_\_\_\_

\_\_\_ \$20 1 yr. couple or individual membership and newsletter

\_\_\_ Additional donations Welcome



# GLSO RAINBOW SPONSOR

**The Imperial Court of Kentucky.....ImpCtKY@aol.com**

A Charity Organization Serving the LGBT Community of Lexington

## 2009 PRIDE MONTH SPONSOR

**Scott Ackerman.....(mobile) 338-8483**

For all your real estate needs

## GLSO NEWS SPONSORS 2008

**SisterSound ..... 806-0243**

Diverse music for all women

**Richardson Vision Center.....278-4201**

1757 Alexandria Drive Gardenside

**Ernesto Scorsone.....254-5766**

Attorney At Law

**Unitarian Universalist Church .....223-1448**

Seeking a Diverse Congregation

**Bluegrass Fairness .....951-4450**

[www.bgfair.org](http://www.bgfair.org)

**Windy Knoll Farm.....299-7410**

Riding Lessons, Trail Riding, Boarding

**Debra Hensley Insurance.....276-3244**

1513 Nicholasville Rd.

**Mohua "Mou" Das.....859 335-8118**

Financial Advisor, UBS

888 390-6900

**Lexington Lyons .....619-3650**

Levi and Leather Club

**Ky. Department for Public Health.....1 800 420-7431**

HIV/AIDS Branch





## Catherine Opie: Lesbian Photographer

By Lindsey Aulbach

Catherine Opie is a famous lesbian photographer who has an exhibit in New York City's Guggenheim Museum. The exhibit is entitled "Catherine Opie: American Photographer" and includes samples of her work from the last two decades.

Opie has had fame spotlighted on her since the early 1990's. As a lesbian artist, Opie helped open the door for other aspiring artists during a controversial era, highlighting greater visibility of gays and lesbians. Her early works showed a tenacious artist who used political messages with an in-your-face style. The recent exhibit focuses on showing members of the gay and lesbian community in a softer light.

Various rooms at the Guggenheim exhibit are designated for different groupings, all focusing on the theme of community. Opie, who initially focused on the GLBT community, demonstrates that she can create stimulating art outside of that demographic.

Her art includes portraits that are large-format and color-rich with individuals in front of jewel tone backgrounds. Pictures of architecture and landscapes are also a focus in several of her collections. "Icehouses"(2001) is an example of how Opie plays with traditional photographic inspirations (architecture and landscapes) to contribute to her theme of community.

Another section of the show is titled "In and Around Home". In this series Opie displays photographs of her own family including one that is a self portrait of Opie nursing her child. The series gives insight into how people have many facets to their lives

**Page 12**

Although the pictures in each collection are unique, they are tied together by Opie's desire to present the subject as it really is.

"It's important for our own culture – the culture we created – to be represented as it is," Opie said in a recent interview at the Guggenheim.

All of Opie's work has a passion that is undeniable. To view some of her work now exhibited at the Guggenheim visit <http://www.guggenheim.org/new-york/exhibitions/on-view-now/cathy-opie-american-photographer>.

## COME TO THE TRANNY ROADSHOW

THURSDAY, JANUARY 15

See page 1



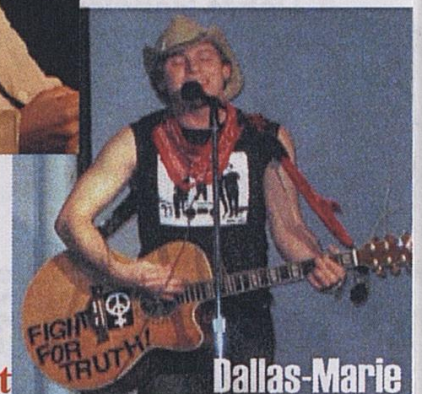
Jamez Terry



KIT YAN



Ignacio Rivera



Dallas-Marie  
Spitzer

Tickets \$10  
Available at  
The Pride Center



## Violence against GLBT People Increased reporting in 2008

A rash of attacks against lesbian, gay, bisexual and transgender people across the country - including the severe beating of a New York man whose attackers believed he was gay - suggests the number of reported assaults may turn out to be higher in 2008 than in previous years.

The number of reported attacks against LGBT people increased 24 percent in 2007 over 2006, and they were expected to increase again in 2008, said Sharon Stapel, executive director of the New York City Anti-Violence Project. Officials are still crunching the 2008 figures, which will be released next spring, Stapel said.

The baseball bat beating of Ecuadorean immigrant Jose Sucuzhanay in New York on Sunday was the latest in a number of reported assaults, said the project, which coordinates organizations that document violence against LGBT and HIV-positive people. The attack left Sucuzhanay, 31, brain dead.

Since the February fatal shooting of Lawrence King, a 15-year-old Los Angeles boy who endured harassment after telling classmates he was gay, "we are witnessing what appears to be an increase in both the occurrence and severity of violence motivated by racism, homophobia, and transphobia," said Stapel.

Stapel attributed the increase in part to more people reporting incidents, but she believed there actually could have been more assaults because 2008 was an election year.

"Election years are always violent years for us because of wedge issues," Stapel said, referring to ballot measures this year banning gay marriage in California and Florida. "With increased visibility comes increased vulnerability to LGBT stereotypes and violence. We've seen some of the most violent hate crimes that we've seen in a while."

In the case of Lawrence King, one

of his classmates was charged as an adult in the slaying, which prosecutors classified as a hate crime.

Other incidents include the discovery of Angie Zapata's body in July in her apartment in Greeley, Colo. Zapata, 18, was a transgender woman. Police have charged a man with murder as a hate crime in her death.

In June, a surveillance tape was publicized showing Memphis, Tenn., police officers beating Duanna Johnson, a transgendered woman, and shouting slurs in a jail booking area; a public outcry erupted. Johnson was found fatally shot on a Memphis street in November.

Also in New York City, police arrested four teenagers on charges of assaulting a priest outside a shelter he ran for homeless transgender youths in July. Witnesses said the four teens had harassed and taunted residents with homophobic slurs and insults before the assault.

"I expect the number will increase from 2007 to 2008," Stapel said. "I hope I'm wrong about that."

## GLSEN Report on LGBT Students

In October 2008, the Gay, Lesbian and Straight Education Network (GLSEN) released a comprehensive report on the experiences of LGBT students ([www.glsen.org](http://www.glsen.org)). The survey of over 6,000 middle and high school students found that the vast majority of LGBT students (86.2%) experienced harassment during the past year, and more than half (60.8%) felt unsafe at school.

In response to these numbers, GLSEN announced that they will initiate a multi-year ad campaign targeting teenagers. The theme will be "When you say, 'That's so gay', do you realize what you say? Knock it off." [www.thinkb4youspeak.com](http://www.thinkb4youspeak.com). Hillary Duff and Wanda Sykes will be two of the people delivering the message.



*Spotlight on the Beautiful People...*  
by Helena Handbasket.

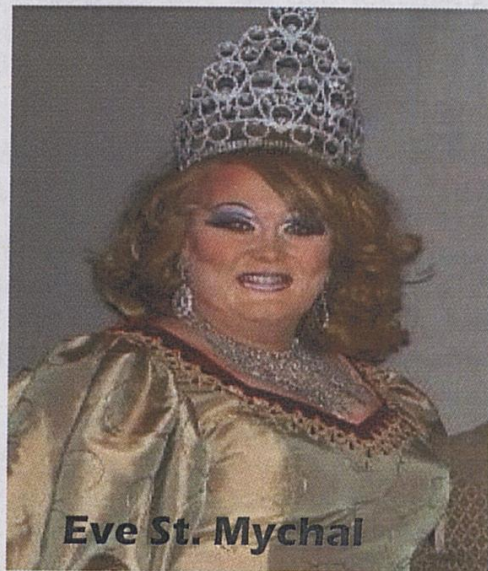
Hello everyone!

This year I have decided to take the focus off of me (go figure) and shine the spotlight on those people in the community who deserve to be recognized. As we all know, beauty is not always skin deep and these "beautiful people" either devote their time and energy to a worthy cause or just plain make our lives better by entertaining us. Either way, it is time that they get some recognition for their talents and efforts.

For our very first recognition of honor, my January spotlight shines on Eve St. Mychal. Eve came to life on stage for the first time on March 26<sup>th</sup>, 2005 at the Bar Complex. That was when she learned you should always wear a shade or two darker than your real skin tone for the spotlight. Eve is from the hills of SE KY and came to the big city with many of her hopes and dreams of stardom and glamour. Little did she know that it's a cut throat world and she would have to fight tooth and toe nail to work for her dreams.

Eve is Catholic and actually takes her name from someone she felt was a light to his community...St. Mychal the Martyr. She suggests we all do a little research and find out what "The Saint of 9/11" did for his fellow man.

Eve came out of the shoot with stars in her eyes and in October of 2005 became Diva of Darkness. Soon after on November 18, 2005, Eve's life took a dramatic turn with the death of her friend, confidant and biggest supporter, her mother. Eve put all her drag away and didn't step back on stage until August 3, 2006, her mother's birthday. She felt it was time to live again and be the person and Queen she knew she was meant to become.



Her involvement with the Court was ever pulling her to be involved and to care for others. As she had always done, Eve saw that there was a need for her and her talents in the Court and she began her life of devotion to the Imperial Court of Kentucky and its charities.

Eve is Empress 27 of all Kentucky and couldn't be happier to be in that position. The hard work and the time involved can be quite overwhelming, but well worth it. Eve is extremely proud of the work the Court does and for what it stands. She feels that if more people would be involved we could raise much more needed money for wonderful charities.

Eve values her friends and would do anything to help them when she can. Eve asks that her own community "Come together and remember we are all here for the same reason." She believes that more could be accomplished if we learned to be supportive and happy for one another.

\*\*\* If there is someone in the community who you feel deserves to be honored in this column, send your request to [AdvicefromHelena@aol.com](mailto:AdvicefromHelena@aol.com) and let's be myspace friends. Look me up at <http://www.myspace.com/helenah>



## History of GLBT Publishing

Continued from previous Newsletters

In 1942, in Los Angeles, Jim Kepner began a private collection of gay-related books, clippings, photographs and artifacts, which later became the International Gay and Lesbian Archive, the oldest and largest in North America. The archive opened to the public in 1979.

Nine issues of a newsletter called *Vice Versa* appeared in Los Angeles in 1947 and 1948. Edited and mostly written by the pseudonymous Lisa Ben (an anagram for Lesbian). It provided an opportunity for lesbians to express their thoughts and feelings, and featured film, music, and book reviews, occasional stories and articles, and editorials on various aspects of lesbian life.

In the 50's, all gay publications and groups had to contend with a strong homophobic culture made worse by the McCarthyism of the period. During the early 50s homosexuals and other "deviants" were often scapegoated as communists.

In 1950, ONE, the first openly gay magazine in the U.S., was mailed to subscribers. The US Postal Service tried to prevent delivery. (They probably said it was obscene material.) The case went to the Supreme Court which ruled in ONE's favor.

The Mattachine Society was founded in Los Angeles in 1951 by Henry Hay and other radical leftists. It published a number of newsletters over the years. In 1964, the earliest known homosexual rights button was produced for the Washington, D.C. conference of the East Coast Homophile Organizations.

In 1967 in Los Angeles, The Advocate arrived on the scene and has be-

come the oldest continually published gay magazine in the U.S.

In 1967 on Thanksgiving weekend in New York City, Craig Rodwell opened The Oscar Wilde Memorial Bookshop, which has become the oldest gay bookstore in the country. A gay activist, Rodwell refused to carry pornography. He believed it was important to have a store that carried serious literature for the lesbian and gay community.

Rodwell ran the store entirely by himself for the first year and half, frequently working 70-hour weeks. In 1973 the store relocated to its current site at the junction of Christopher and Gay Streets, a block away from the historic Stonewall Bar.

In 1967 in San Francisco, a group of radical gays formed the Circle of Loving Companions and began publishing a monthly called *Vanguard*.

Also in that year, The American Library Association began awarding an annual Gay Book Award. Their first award was given to Isabel Miller for her novel *Patience and Sarah*. Miller self published this book and stood outside of lesbian bars to sell copies. It is still a favorite and it is available in the Pride Library.

In 1973, Daughters, Inc., a lesbian-feminist publishing house founded by June Arnold and Parke Bowman, published the first edition of Rita Mae Brown's *Rubyfruit Jungle*, which was later sold to Bantam Books as a mass-market paperback. Also in 1973, Naiad Press was started in Florida by Barbara Grier and Donna McBride. Naiad is the oldest surviving lesbian publisher in N. America.

Also in that year, Olivia Records, the leader in women's music, was founded by a lesbian-feminist collective. The company cut its first single a year later, with Meg Christian on one side and Cris Williamson on the other. (Yes, records had two sides 35 years ago).



**BANG**  
NIGHTCLUB  
117 N. Limestone

**Singing For Pride**  
A Fund-Raiser for the  
GLSO Pride Center of the Bluegrass

KARAOKE

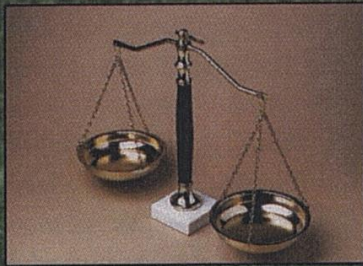


Join Host, Bill Melater  
and  
The Bang Gang  
for an evening  
of Fun & Music



Every 1st and 3rd Tuesday of the month @ 9:00 p.m.

**KEITH DONIPHAN  
ELSTON**  
ATTORNEY AT LAW



**ELSTON LAW OFFICE**  
(859) 225-2348

511-A WEST SHORT STREET  
LEXINGTON, KY 40507

### Volunteers Needed for GLSO News

The GLSO News is always looking for contributors. Some people write news stories, reporting on their particular community group or organization. Other people write feature articles. We love having contributors and want more!

If you have pictures you would like to contribute, be sure you have the permission of the people in the picture. Send the names of those pictured and some information about where and when the picture was taken. We can not promise to print all pictures.

If you would like to write for us, we can accommodate a wide variety of writing. If you have an idea for an article, just give it a try and send it in to [marycrone@insightbb.com](mailto:marycrone@insightbb.com). If you have questions you can also call Mary at 859 266-5904 (H) or 221-4396(C).



# Activities

## Regular Events:

### Sundays

10am – U.U. Church Worship Services  
10:30am – St. Mychal The Martyr Services  
6pm – SisterSound Rehearsal at  
Lansdowne Presbyterian Church  
6 pm – Imperial Court- 2nd & 4th -PC

### Mondays

7pm - Lex. Lyons 2nd Mondays -PC

### Tuesdays

7pm – Gay Straight Alliance (GSA) -PC  
(call 266-5904 for info)  
9 pm - Karaoke at The Bang - 1st and 3rd

### Wednesdays

7pm– Open Discussion Group -PC

### Thursdays

7pm Open GLSO Board Meeting -2nd Th.

### Fridays

7pm -Lex. Insight - 1st. Fri. Pot-Luck  
3rd Fri. Movie Night

### Saturdays

7:30pm 1st Sat. Trans Kentucky (CFP)

*PC: Pride Center*  
*CFP: Contact for Place*  
*Questions call 253-3233*

### **GLSO News Deadline**

**January 15**

**Send articles and ads to**  
**[marycrone@insightbb.com](mailto:marycrone@insightbb.com)**

## January Events:

Jan. 15, 7pm.– Tranny  
RoadShow at U.U. Church  
on ClaysMill Road



Jan. 31, 8pm.– SisterSound  
Concert, Touched By  
Change Singletary Center

## February and March

Saturdays 10—11:30 am  
*Supporting One Another  
Through Grief: A GLBT  
Partner Loss Support Group*  
For information or to register  
for the group, please call  
(859) 277-2700, or email  
[lcaudill@hospicebg.org](mailto:lcaudill@hospicebg.org).

Frankfort Group  
Contact: Karen Taylor  
[ktaylor@fewpb.net](mailto:ktaylor@fewpb.net),  
502 223-7441(H) or 502 545-6355



## ST. MYCHAL THE MARTYR PARISH

Sunday Worship 10:30



**WE HAVE MOVED!**

1033 Industry Rd.  
(859) 338-1195

[www.stmychalthemartyr.org](http://www.stmychalthemartyr.org)

St. Mychal The Martyr

[www.stmychalthemartyr.org](http://www.stmychalthemartyr.org)

You are invited to our worship services every Sunday at 10:30 with Rev Ken Waibel performing mass. We are at 1033 Industry Rd. off Winchester Rd. We are a liturgical church with worship filled with ritual and hearts filled with joy.

St. Mychal is a member of the Orthodox Catholic Church of America, a national church that is gay supportive. We perform blessings of gay unions, welcome divorced people, and ordain all persons into the orders of Deacon, Priest and Bishop.



Unitarian Universalist Church

**Public Support for GLBT Rights**

The U.U. Church has worship service at 11 am each Sunday. Ours is a liberal religious tradition with room for many beliefs. Our congregation includes people who identify as Christian, Jewish, Buddhist, Pagan, Muslim, Atheist, Agnostic, and Humanist.

We are a welcoming congregation that celebrates our GLBT members. We are located at 3564 Clays Mill Rd.

There are also frequently activities on Wednesday nights including yoga, Humanist forum, discussion groups and so forth. Please pay us a visit.



Couples  
Counseling

Union  
Ceremonies

### Rev. Kenneth Waibel

Professional Spiritual Direction

*Ecumenical \* Holistic \* Inclusive*

[kypadre@aol.com](mailto:kypadre@aol.com)  
(859) 338-1195



# The GLSO Directory

*\* Have emails or websites*

## **GLSO Board:**

GLSO Pride Center \*(Bill) .....859-253-3233  
GLSO Board \* (Mary) .....859-266-5904  
Discussion Group (Bill) .....859-253-3233  
GLSO News (Mary) .....859-266-5904  
    Subscriptions.....859-253-3233  
Speakers' Bureau (Mary).....859-266-5904

## **Student Groups:\***

Berea College ACE (Ryan) .....859-985-3633  
Centre College (BGLA (Mykol)) .859-238-5332  
Morehead State Univ. (Ned) .....606-783-2294  
OUTsource (UK) .....859-323-3312

## **Anonymous HIV Testing:**

Jessamine County .....859-885-4149  
Lexington, Fayette County .....859-288-2437  
Woodford County .....859-873-4541  
U.K. Adolescent Medicine .....859-323-5643

## **HIV/AIDS Info/Services:**

AVOL (AIDS Volunteers, Inc.)\* ..859-225-3000  
Lexington Health Dept. ....859-288-2437  
HIV/AIDS Legal Project .....502-584-1254  
Cumberland Region (SEKY-Pat)  
    .....606-864-3776  
    .....888-425-7282  
Lexington S.T.O.P. Program (Jeff)  
    ....859-254-3469 ext.230  
Louisville Region .....502-574-0161  
Northern Kentucky Region .....859-341-4264  
Purchase Region .....800-522-8289  
Moveable Feast Lex., (Terry) .....859-252-2867

## **Community Groups:**

Alcoholics Anonymous (Ron) ....859-948-0434  
Al-Anon / Al-Teen (Office) .....859-277-1877  
Bluegrass C.O.L.T.S. (Morris) ....859-225-9169  
Council for Peace & Justice .....859-255-6999  
Fairness of Louisville .....502-893-0788  
Social Services (formerly First Link).....211  
Internat. Gay Bowling (Steve) ....859-276-3058  
Lexington Fairness \*.....859-951-4450  
Lex. Human Rights Comm. ....859-252-4931  
Lex. Insight Group (Dana) .....859-230-2428  
Lexington Pride Festival \*.....859-253-3233  
Lyons Leather/Levi Club (Paul) \*  
    .....859-940-1769

PFLAG Louisville \*.....502-329-0229  
SisterSound (Patti) .....859-806-0243  
24 hr. Crisis Line .....1-800-928-8000  
24 hr. Teen Crisis Line .....1-800-999-9999

## **Religious Groups:**

Interweave (Unitarian-Mary) ..859-266-5904  
Integrity (Episcopal-David) ...859-396-9691  
Lexington Friends (Quakers) ...859-254-3319  
Jubilee Fellowship (Rev. Cori)\*. 859-421-5859  
MCC Paducah (Rev. Lillian) ...270-443-3339

## **\* Email & Website Addresses:**

GLSO Pres. ....marycrone@insightbb.com  
GLSO/Pride Center Website:..... www.glso.org  
Pride Center Email.....lexingtonglso@yahoo.com  
Lexington Fairness.....www.lexfair.org  
Lexington Pride Festival.....www.lexpride.com  
    Email.....lexpride@gmail.com  
Lyons Leather/Levi Club .....www.lexlyons.org  
AVOL.....www.avolky.org  
Moonshine Bears of KY (Jim)  
    .....www.moonshinebears.com  
OUTsource .....susanmatsubara@yahoo.com  
PFLAG Louisville  
    .....pflaglouisville@yahoo.com  
TransKentucky .....TransKentucky@gmail.com  
Jubilee Fellowship  
    .....jffellowship@windstream.net  
KY Pagan Forum .....http://go.to/kypaganforum/

**Deadline for submissions**

**February Newsletter**

**January 15**

**Send articles and ads to**

**marycrone@insightbb.com**



# The Tranny Roadshow



First Time in Kentucky

**Thursday, January 15**

**7 pm**

**\$10**

Unitarian Universalist Church

3564 Clays Mill Road

Tickets available at the Pride Center and from Mary Crone

Featuring: **Folk Singers** **Actors**

**Poets** **Filmmakers** **COMEDIANS,**

**storytellers** **ROCK BANDS**

**Opera Singers** **Puppeteers**

**Photographers** **Zinesters**