

**MEMORIAL COLISEUM - UNIVERSITY OF KENTUCKY**

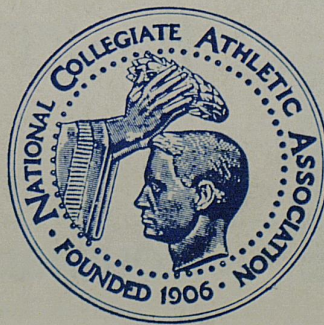
*19th Annual*

**NATIONAL COLLEGIATE  
BASKETBALL CHAMPIONSHIPS**

(Midwest Regional)

**March 15 - 16, 1957**

**7:30 and 9:30 P. M.**



OFFICIAL NCAA PROGRAM — 25 CENTS



— work hard, too — with full HOUSEPOWER

**Have  
Energy**



**Will  
Travel**

Reddy's on your team, an All-American worker. He'll wash your clothes (dry 'em, too), cook your meals, and entertain you. He asks but one favor —

Please give him enough power to do a good job. Make sure your home has a big enough service entrance, big enough wires, enough circuits and switches to supply all the power you need.

With this full HOUSEPOWER, you can be sure Reddy Kilowatt will put his best foot *forward*, come front and *center*, and *guard* you from inefficient service. Ask your electrical contractor about full HOUSEPOWER.

**Kentucky Utilities Company**



# THE LAFAYETTE

*Lexington's Favorite Hotel*

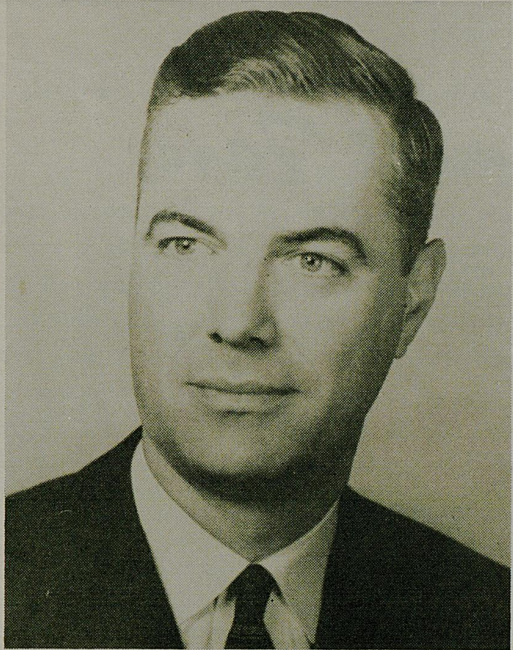
*extends a*

**HEARTY WELCOME**

*to*

**Tournament Visitors**





DR. FRANK G. DICKEY  
*President, University of Kentucky*

### *Welcome . . . .*

It is my pleasure to welcome to the campus of the University of Kentucky our visitors who are here for the Regional Section of the National Collegiate Athletic Association Tournament. We wish to extend a sincere welcome to the fine basketball teams which will participate in this tournament.

The fact that these teams are participating in a tournament leading to the national basketball title indicates quite clearly the high quality of the athletic programs at these schools. We are proud of our athletic program at the University of Kentucky and we hope that the contests which will be a part of this tournament will be ones which will feature hard, clean competition which is so much a part of our American tradition and strength. Intercollegiate athletics have made a significant contribution to the vigor and vitality of our society.

The faculty, staff, and student body of the University of Kentucky extend warm greetings and express a sincere hope that you will enjoy your visit to our campus.

Frank G. Dickey, President  
University of Kentucky

A tall, silver-haired administrator, who was a three-sport star in his collegiate days at Illinois and Director of Athletics for the University of Kentucky since 1938, serves in the capacity of Tournament Manager of the Midwest Regional. He is Bernie A. Shively, a capable supervisor known familiarly to thousands of athletes, coaches, officials and fans as "Shive." During his college career at Illinois in the late twenties, he was an All-America guard on the same grid team made famous by Red Grange. "Shive" also laid claim to the Big 10 heavyweight wrestling title and annexed letters in track. During his tenure at Kentucky, he has held the posts of football line coach, head of the Physical Education Department, track coach, baseball coach and head football coach in addition to supervising the steady growth of one of the nation's top athletic programs in the capacity of Director of Athletics. The Kentucky sports chief also served as chairman of the Southeastern Conference basketball committee for a number of years and for the past four years has been president of the SEC Coaches and Athletic Directors Association.



BERNIE A. SHIVELY  
*Tournament Manager*

**OFFICIAL NCAA TOURNAMENT PROGRAM**

Edited by Ken Kuhn  
Advertising Solicitation by A. E. Hukle



# Welcome Tournament Fans

FOR GIFTS OF THE

**UNUSUAL**

VISIT MY

**LEXINGTON SHOP**

CORNER MAIN AND LIME

*While You Are in Lexington*

# Kessler Jewelers

LEXINGTON • RICHMOND • DANVILLE

## *Follow the Wildcats*

### KENTUCKY FOOTBALL SCHEDULE

1957

Sept. 21—Georgia Tech.....	Atlanta, 2 p.m.
Sept. 28—Mississippi.....	Lexington, 8 p.m.
Oct. 5—Florida.....	Lexington, 8 p.m.
Oct. 12—Auburn.....	Auburn, 2 p.m.
Oct. 19—L.S.U.....	Baton Rouge, 8 p.m.
Oct. 26—Georgia.....	Lexington, 8 p.m.
Nov. 2—Memphis State.....	Lexington, 2 p.m.
Nov. 9—Vanderbilt.....	Nashville, 2 p.m.
Nov. 16—Xavier.....	Lexington, 2 p.m.
Nov. 23—Tenn.....	Lexington, 1:30 p.m.

Kessler Jewelers, located at Main and Limestone in Lexington, and with convenient downtown location in Danville and Richmond, offers you the finest jewelry, watches, pens, and guarantees every item of merchandise you purchase from any Kessler Jewelry Store. Personalized jewelry is a Kessler specialty, jewelry which matches your personality, and is designed with you in mind. Make all of your jewelry purchases the friendly, and economical Kessler way. Diamonds our specialty.

REMEMBER YOUR CREDIT  
IS GOOD HERE



## HISTORY OF THE NATIONAL COLLEGIATE BASKETBALL CHAMPIONSHIP

The National Collegiate Basketball Championship, often referred to as the NCAA Tournament, was inaugurated in 1939 as the result of a recommendation from the National Association of Basketball Coaches that a basketball tournament be held to determine a national champion.

For the first time this year, the 19-year old tournament will be divided into two divisions with an anticipated field of more than 50 aspirants taking part in the quest for two covered national championships.

The established tournament now becomes known as the University Division—to include those schools playing "major" schedules—and a new tournament has been originated to be known as the College Division, encompassing schools in the small college category who do not attempt a major basketball schedule.

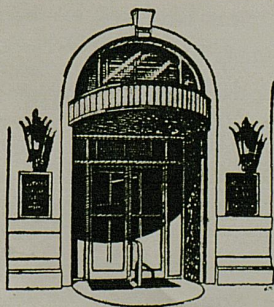
Under the pattern of the original tournament as revised in 1951 and later, the path leading to the na-

tional championship—which will be decided in Kansas City March 23 for the majors and at Evansville, Ind., March 15 for the small colleges—is a rocky enough one to assure that the eventual champions are truly top flight basketball teams worthy of the honor of heading the 450-member NCAA.

The University Division draws its participants from 182 eligible schools, with 16 champions of major conferences across the country entering as automatic qualifiers. Seven other "At Large" teams, not affiliated with a conference, round out the field of 23 by invitation.

First round preliminaries took place at various sites March 11-13 with winners advancing to the four regional tournaments—East at Philadelphia, Midwest at Lexington, West at Dallas and Far West at Corvallis, Ore. Regional winners go on to the national semi-finals and finals at Kansas City.

The complete University Division tournament bracket is on page 24.



**BEST WISHES TO ALL TEAMS AND FANS**

**CITIZENS UNION BANK  
AND TRUST CO.**

Short at Upper

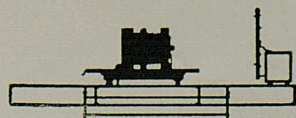
*Member Federal Deposit Insurance Corp.*

**L**EXINGTON PHOTO ENGRAVING COMPANY

223 WEST SHORT STREET

*Lexington, Kentucky*

TEL 3-5015



*Quality Engravings for  
College Papers & Annuals*



*Kentucky's Best & Fastest  
Service — Priced Right*



# THANKS!

The success of the fine basketball program being held in Memorial Coliseum tonight is not something that just automatically happened with the assignment of the University of Kentucky as host for the Midwest Regional NCAA Tournament. Nor is it merely the work of one individual or group.

Instead, this outstanding event represents the culmination of several weeks of planning and a great deal of working support by numerous individuals and civic-minded organizations, chief among them the University of Kentucky Committee of the Lexington Chamber of Commerce.

On behalf of the National Collegiate Athletic Association, the Tournament Committee and the University, I wish to take this opportunity to publicly thank everyone who has played a part in assuring the success of this tournament. Without this splendid help, there would have been no opportunity for basketball fans of this area to see four nationally-renowned teams in action leading to the National Championship.

Thanks also go to the Lexington Herald-Leader for their invaluable aid in keeping the public informed about the tournament, to other members of the press and radio for their co-operation and to the Lexington Salesmen's Club, whose members lent valuable help in the sale of tickets.

A special note of appreciation also is due Mr. A. E. Hukle, Manager of the Phoenix Hotel, who voluntarily gave his services to solicit advertising for the official game program. His work and the advertising support given by Lexington business firms enabled the presentation of this fine game program.

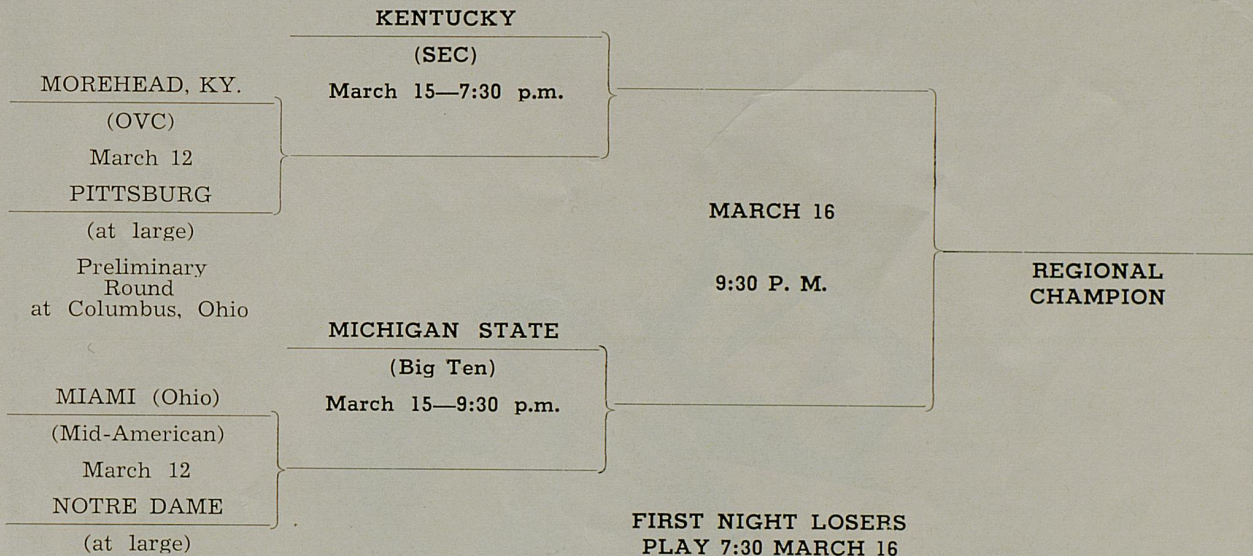
BERNIE A. SHIVELY  
Tournament Manager



# THE MIDWEST REGIONAL TOURNAMENT

Memorial Coliseum—University of Kentucky

March 15 - 16



## THE TOURNAMENT TRAIL

For the first time since the National Collegiate Basketball Championship was inaugurated in 1939, the University of Kentucky is privileged to play host to a regional section of the annual NCAA eliminations leading to the national title. Although Kentucky's Wildcats have long been the top name in the cage world and rank as the only three-time NCAA champion, the only previous portion of the big tournament ever held here was a first-round playoff two seasons back. Participants then were Miami (Ohio) University, Penn. State, Marquette and Memphis State.

The Midwest Regional being played here tonight draws its teams in two ways. Champions of the South-

eastern Conference and Big 10 qualified automatically by winning their respective leagues. The two other teams advanced to the Regional after successes in preliminary competition at the Ohio State Fieldhouse in Columbus on March 12.

Out of the Lexington Regional, one of four such tournaments in the country going on simultaneously, will come a regional champion who qualifies to advance to the semi-finals which will be staged at Kansas City on March 22. Winners of the two semi-final games, Eastern and Western champions, play for the national championship at Kansas City March 23.

*Kentucky's Finest Department Store*

*Wolf Wile's*

FOUNDED IN LEXINGTON . . . . . FAMED THROUGHOUT KENTUCKY



**SAY**



for  
**Tops in Flavor  
and Freshness!**

**HONEY-KRUST is Good Bread**



## NATIONAL CHAMPIONSHIP RESULTS

Year	Site	Champion		Runner-Up	Final Score
1939	Northwestern	Oregon	defeated	Ohio State	46-33
1940	Kansas City, Mo.	Indiana	defeated	Kansas	60-42
1941	Kansas City, Mo.	Wisconsin	defeated	Washington State	39-34
1942	Kansas City, Mo.	Stanford	defeated	Dartmouth	53-38
1943	New York City	Wyoming	defeated	Georgetown	46-34
1944	New York City	Utah	defeated	Dartmouth	42-40
1945	New York City	Oklahoma A&M	defeated	N. Y. U.	49-45
1946	New York City	Oklahoma A&M	defeated	North Carolina	43-40
1947	New York City	Holy Cross	defeated	Oklahoma	58-47
1948	New York City	Kentucky	defeated	Baylor	58-42
1949	Washington	Kentucky	defeated	Oklahoma A&M	46-36
1950	New York City	C.C.N.Y.	defeated	Bradley	71-68
1951	Minnesota	Kentucky	defeated	Kansas State	68-58
1952	Washington	Kansas	defeated	St. John's	80-63
1953	Kansas City, Mo.	Indiana	defeated	Kansas	69-68
1954	Kansas City, Mo.	LaSalle	defeated	Bradley	92-76
1955	Kansas City, Mo.	San Francisco	defeated	LaSalle	77-63
1956	Northwestern	San Francisco	defeated	Iowa	83-71

### Regional Champions

Year	East Champion	East Runner-Up	West Champion	West Runner-Up
1939	Ohio State	Villanova	Oregon*	Oklahoma
1940	Indiana*	Duquesne	Kansas	U. S. C.
1941	Wisconsin*	Pittsburgh	Washington State	Arkansas
1942	Dartmouth	Kentucky	Stanford*	Colorado
1943	Georgetown	DePaul	Wyoming*	Texas
1944	Dartmouth	Ohio State	Utah*	Iowa State
1945	N. Y. U.	Ohio State	Oklahoma A&M*	Arkansas
1946	North Carolina	Ohio State	Oklahoma A&M*	California
1947	Holy Cross*	C. C. N. Y.	Oklahoma	Texas
1948	Kentucky*	Holy Cross	Baylor	Kansas State
1949	Kentucky*	Illinois	Oklahoma A&M	Oregon State
1950	C. C. N. Y.*	N. C. State	Bradley	Baylor
1951	Kentucky*	Illinois	Kansas State	Oklahoma A&M
1952	St. John's	Midwest Champion	West Champion	Far West Champion
1953	L. S. U.	Illinois	Kansas*	Santa Clara
1954	LaSalle*	Indiana*	Kansas	Washington
1955	LaSalle	Penn State	Bradley	U. S. C.
1956	Temple	Iowa	Colorado	San Francisco*
		Iowa	Southern Methodist	San Francisco*

\*—National Champion.

*"There's A Dixie Dealer Near You"*



DIXIE ICE CREAM CO., INC.

344-60 East Main St., Lexington





## Try A Tankful In Your Car!

Prove to yourself the importance of a detergent gasoline. Ashland and Aetna detergent gasoline removes harmful engine deposits, drives them out the exhaust, restores your car's power and pep. Make the important change to a detergent gasoline . . . your car will perform better than ever before.

ASHLAND OIL & REFINING COMPANY

AND

AETNA OIL COMPANY





# PITTSBURGH PANTHERS



ROBERT TIMMONS

After just four seasons on the job, Pitt basketball chief Bob Timmons has brought his cage outfit to their best record in 16 years (15-9) and first post-season tournament bid since 1941. This year, the Panthers closed with a rush that saw them victorious in five of their last six starts and the NCAA Tournament berth pointed the finger at Timmons as one of the East's leading mentors. In four seasons, his Pitt record stands at an even .500 with 49 wins and 49 losses going into tourney play.

## SEASON RECORD

Pitt.		Opp.
85	North Carolina St.	97
69	Ohio State	100
64	Westminster	54
73	Northwestern	71
89	Carnegie Tech	56
59	Duquesne	50
75	Michigan	90
76	Seton Hall	66
85	Western Kentucky	81
60	*Connecticut	64
69	Lafayette	59
86	West Virginia	89
64	Bucknell	49
66	Penn State	75
76	Syracuse	64
54	Army	47
70	St. John's	78
72	Duke	90
71	Westminster	69
79	Navy	63
96	Carnegie Tech	64
93	West Virginia	107
94	Penn	76
80	Penn State	65

\* Overtime

WON 15 — LOST 9

## PITTSBURGH BASKETBALL RESUME

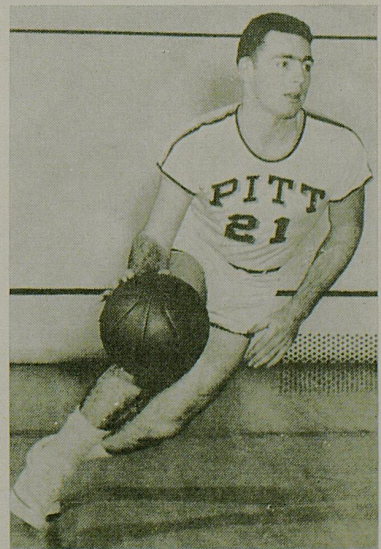
Appearing in its first post-season tournament since 1941, the surprising Pittsburgh basketweavers marked themselves as one of the country's leading independent teams with a late-season surge that carried them to a 15-9 record, their best in 16 years.

Highlighting their early season campaigning, the Panthers took a 5-2 record into the Orange Bowl Classic and came out with runner-up honors after losing by four points in overtime to Connecticut, later to enter the NCAA Tournament as Yankee Conference champion. Included in their holiday tourney foes was Western Kentucky and the Hilltoppers felt the sting of defeat, 85-81.

After the New Year, the pace of outstanding opposition stepped up and Pittsburgh was hard pressed but played tremendous ball and won five of the last six starts, nevertheless. Their last loss was to West Virginia, eventual Southern Conference titlist. Sparkling of the Pitt attack is sophomore guard Don Hennon, leading scorer on the team with 20.8 average and one of the nation's smallest regulars.

The pattern of the Panthers' showing against high calibre competition lends support to the feeling they may possibly go even further this time than in their last NCAA trial six years ago when they lost to Wisconsin in the eastern championship game.

Pitt took a big step toward this goal as they moved into the Midwest Regional with an 86 to 85 triumph over Morehead in a preliminary playoff game at Columbus.



DON HENNON  
*Sophomore*



Now In Lexington

•  
Order by Phone  
and Take  
'Em Home  
•



•  
Air Conditioned  
Dining Room  
or Car Service  
•

"The Original Double Decker Hamburger"  
CHICKEN — SHRIMP — SANDWICHES  
1927 Harrodsburg Rd. - Route 68 - Phone 5-1407

PARKING — STORAGE

OPEN 24 HOURS

## Lafayette-Phoenix Garage, Inc.

204 E. MAIN ST.

GAS — OIL

WASHING — GREASING

3% INTEREST ON ALL  
SAVINGS CERTIFICATES

•  
*All Deposits Insured by  
Federal Deposit Insurance Corporation*

•  
**CENTRAL BANK**

Lexington, Kentucky

Compliments

of

**CALUMET  
FARM**

Versailles Road



# KENTUCKY WILDCATS



COACH ADOLPH RUPP

When the sport of basketball is mentioned today a direct chain of thought eventually brings out the name of one man who has become virtually synonymous with the game over the past quarter-century — Adolph Rupp of Kentucky. In his 27th season, the "Nation's Winningest Coach" can look back over an unprecedented record of three NCAA championships in eight appearances, 17 conference titles and a host of other honors while compiling a victory average of better than 85 percent.

## KENTUCKY BASKETBALL SEASON RESUME

Adolph Rupp, the colorful baron of basketball at Kentucky whose amazing success story in 27 seasons with the Wildcats would fill a book, can't help smiling a bit while shaking his head in amazement at the feats of the 1956-57 Kentuckians.

The smile isn't born of smugness at the Wildcats' record of gaining an unprecedented 17th Southeastern Conference title, ranking as the third best team in the nation by all polls on 22 victories in 26 tests or their unequalled achievement of entering the NCAA Tournament for the ninth time in quest of a record fourth national title.

Rather, the veteran coach's smile and head shaking is brought about as he reflects on his pre-season estimate that "this could possibly be the weakest Kentucky team in the past 15 years." He honestly believed the loss of three tall and talented regulars plus a key reserve from a team that had posted the worst record since 1943 would necessitate a rebuilding job resulting in an even poorer showing.

The fact that the young and inexperienced crew, which boasted no All-America scoring star to carry the load and relied more on "heart" than talent, raced through a card of major opposition with remarkable success proved as big a surprise to the coach as to the average fan. Most amazing was the further fact that the record was achieved despite further problems—such as two one-point setbacks early in the season, the month-long loss of stellar guard Vernon Hatton and other psychological factors.

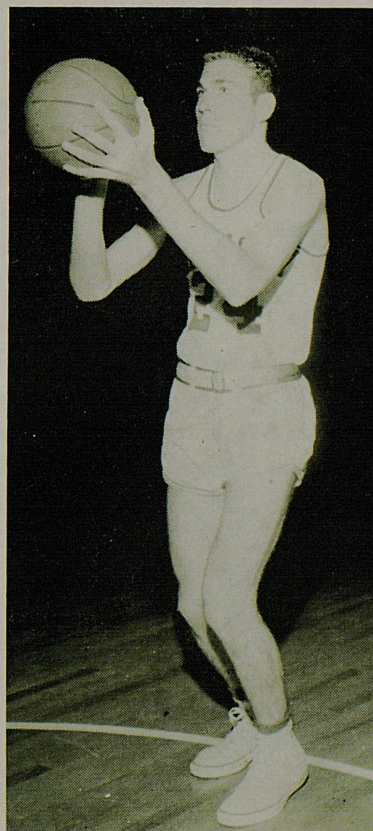
Highlighting the record was the Wildcats' feat of upsetting previously undefeated Southern Methodist and Illinois on successive nights to win the UK Invitational Tournament, following up with a Sugar Bowl trophy and staving off the stiffest challenges in league history to capture the SEC title.

For the obviously outstanding job, Baron Rupp once again was chosen "Coach of the Year" in the SEC and was runnerup in national balloting on the honor. Individual honors went to sophomore forward Johnny Cox with All-Conference and third team All-American selections.

## SEASON RECORD

Ky.		Opp.
94	Washington & Lee	66
114	Miami (Fla.)	75
73	Temple	58
70	St. Louis	71
76	Maryland	55
84	Duke	85
73	Southern Methodist	67
91	Illinois	70
56	Virginia Tech	55
111	Houston	76
95	Georgia Tech	72
81	Loyola (Chicago)	62
51	Louisiana State	46
60	Tulane	68
97	Tennessee	72
91	Vanderbilt	83
76	Georgia Tech	65
84	Georgia	53
88	Florida	61
75	Mississippi	69
81	Mississippi State	89
115	Loyola (Chicago)	65
80	Vanderbilt	78
79	Alabama	60
103	Auburn	85
93	Tennessee	75

WON 22 — LOST 4



JOHNNY COX  
Sophomore Scoring Star



# PITTSBURG PANTHERS

*At Large*



Front Row (L-R) John Malley, Bob Verderber, Richard Woznicki, Eugene Cercone, David Wunderlich, Don Hennon. Second Row (L-R) John Laneve, William Kinter, Bill Zito, Julius Pegues, Bill Dillon, Donald Jones and Coach Bob Timmons. Back Row (L-R) Chuck Hursh, John Riser (co-captain), Dave Sawyer, Bob Lazor (co-captain), Barry Brautigam and Dennis Dorman.

## PITTSBURGH ROSTER

White No.	Blue No.	Name	Pos.	Class	Age	Ht.	Wt.	Hometown
10	10	John Laneve	G	Sr.	22	6-0	170	Newell, W. Va.
12	12	Bob Lazor	C	Sr.	21	6-6	210	Canonsburg, Pa.
17	17	Charles Hursh	G	Jr.	20	6-4	185	Irwin, Pa.
20	20	Milan Markovich	G	Sr.	22	5-11	175	Aliquippa, Pa.
21	21	Howard Lester	F	Jr.	21	6-2	190	Pittsburgh, Pa.
27	23	Barry Brautigam	G	Sr.	22	6-6	175	West View, Pa.
24	24	Eugene Cercone	G	Jr.	21	5-8	140	Freedom, Pa.
25	25	Don Hennon	G	Soph.	19	5-9	175	Wampum, Pa.
26	26	Julius Pegues	F	Jr.	21	6-3	175	Tulsa, Oklahoma
29	29	Bill Zito	G	Soph.	20	6-3	200	Punxsstawney, Pa.
30	30	John Riser	F	Sr.	22	6-4	200	Washington, Pa.
22	31	Richard Woznicki	F	Jr.	20	5-11	175	Aliquippa, Pa.
32	33	David Sawyer	G	Soph.	20	6-6	180	Mt. Morris, N. Y.
36	36	Dennis Dorman	C	Jr.	25	6-6	205	Pittsburgh, Pa.

COACH — Robert Timmons

ATHLETIC DIRECTOR — Tom Hamilton

COLORS — Blue and Gold



# NOTRE DAME



JOHNNY JORDAN

This is the sixth season, Jordan, a former Irish basketball captain himself (1934-35 season), has coached the Notre Dame hoopsters. And it is noteworthy that in three of the last five campaigns, his charges have been selected to participate in the NCAA Tournament. His other two tourney teams were 1952-53 (which won 19 and lost five), and 1953-54 (which won 22 and lost three).

## SEASON RECORD

Notre Dame		Opp.
98	St. Joseph	55
75	Wisconsin	55
60	Northwestern	75
72	Purdue	85
86	Valparaiso	74
75	Louisville	85
72	# New York	71
91	# Brigham Young	66
79	# Manhattan	86
84	Butler	86
82	Northwestern	61
90	Loyola	76
86	Michigan State	76
81	Illinois	99
94	Indiana	82
89	Canisius	94*
99	Holy Cross	82
78	Portland	64
96	Loyola	64
70	Butler	65
99	Detroit	88
95	DePaul	80
76	Marquette	56
85	DePaul	73
94	Marquette	55

# Eastern College Athletic Conference  
Holiday Festival Tourney  
\* Double Overtime

WON 18 — LOST 7

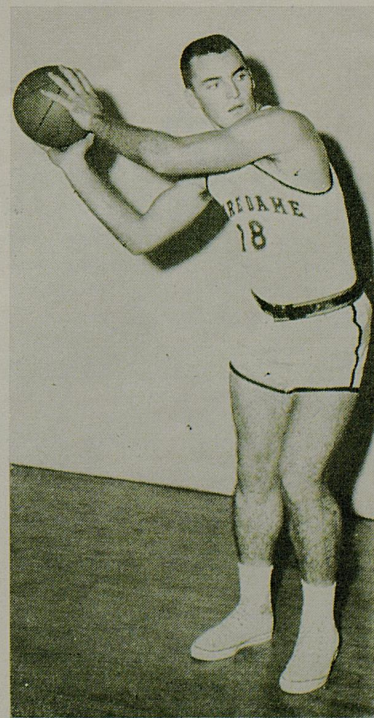
### NOTRE DAME BASKETBALL SEASON RESUME

Despite a slow start which saw them win only five of their first ten games, the 1956-57 Notre Dame basketball team lived up to every inch of the Fighting Irish tradition to stage a sensational finish that won them a third invitation to the NCAA Tournament.

Coach Johnny Jordan's charges, after solving their early season difficulties, bounced back to close out the regular campaign with nine consecutive victories and, all told, won 13 of their last 15 encounters with formidable opposition. To gain the Midwest Regional berth here, Notre Dame disposed of Mid-American Conference champion, Miami of Ohio, in a preliminary playoff at Columbus, 89 to 77 and brought their season record to 19 wins against seven defeats.

This Irish team, boasting the distinction of being the highest scoring Notre Dame club in history with 2,106 points in regular season play, shows such important achievements as runner-up honors in the Holiday Festival tourney and impressive seasonal wins over the Big Ten co-champions, Michigan State and Indiana. Their last loss was a double overtime decision to Canisius at Buffalo Feb. 2.

In its previous appearances in the NCAA, Notre Dame has been unable to advance further than the quarter-finals.



CAPTAIN JOHN SMYTH  
Center



# Welcome

## KENTUCKY N. C. A. A. REGIONAL BASKETBALL TOURNAMENT

SERVING LEXINGTON  
AND CENTRAL  
KENTUCKY FOR  
85 YEARS



With our New and Modern Printing Plant shown above, coupled with our Modern Store we now offer the most complete one-stop service for Office Supplies, Office Furniture, Printing and Lithographing that has ever been available to the public in Central Kentucky.

### TRANSYLVANIA PRINTING COMPANY

139 WEST SHORT ST.

PHONE 2-7977

*Printers of this Program*

# Ball <sup>fine</sup> ice cream

**For Delicious Sandwiches  
and Thick Milk Shakes . . . .**

FIVE BALL LOCATIONS TO SERVE YOU:

- 895 E. High Street
- 816 S. Lime
- 944 Winchester Pike
- N. Broadway at 7th Street
- Southland Shopping Center



*Nat First says*

## 'Welcome Fans!'

Outstanding basketball teams don't just happen. It takes qualified, experienced personnel with a desire to win. These same qualities go into forming the most successful banking establishments. First National, Lexington's oldest and largest bank, is staffed with qualified, experienced people with the desire to give the very best in banking service.

### First National Bank and Trust Company

DOWNTOWN

CHEVY CHASE

SOUTHLAND



# MICHIGAN STATE SPARTANS



FORREST (Forddy) ANDERSON

Directing Michigan State's basketball fortunes for the third season is Forrest (Forddy) Anderson, a successful young mentor who gained All-Pacific Coast Conference honors in his collegiate days at Stanford. In nine years of coaching at Great Lakes, Drake and Bradley prior to taking over the Spartans, he compiled a record of 205-84 and his team saw action in two NCAA tourneys. At MSU, he shows a success story of 40 wins against 26 defeats to date.

## SEASON RECORD

Mich. State		Opp.
53	Iowa State	60
79	Brigham Young	61
79	Butler	82
92	Marquette	65
79	Nebraska	65
87	Colorado	90
76	Oklahoma	74
71	Purdue	72
69	Michigan	70
76	Notre Dame	86
51	Ohio State	70
72	Minnesota	59
73	Ohio State	64
77	Northwestern	63
70	Illinois	64
68	Purdue	66
77	Iowa	67
89	Illinois	83
70	Minnesota	65
78	Wisconsin	62
76	Indiana	61
72	Michigan	81

## MICHIGAN BASKETBALL SEASON RESUME

Michigan State's basketball squad truly has been a cinderella outfit this season, wrapping up a share of the Big Ten championship with an amazing comeback after a most dismal start in the league race.

Coach Forddy Anderson's team, though hardly considered first-division timber in pre-season league calculations, played well early in the year. The Spartans placed third in the tough Big Seven holiday tournament and entered 1957 with a 4-3 mark.

But in January, the bottom seemed to fall out of the club. State lost its first three conference games, to Purdue and Michigan by one-point margins, and to Ohio State by 19 points, along with a non-league loss to Notre Dame.

Right then and there, the team did a complete about face. With starters Larry Hedden, George Ferguson, John Green, Jack Quiggle and Pat Wilson leading the way and key bench men Bob Anderegg, Dave Scott and Chuck Bencie providing excellent support, the Spartans came back on to knock off ten straight Big Ten opponents.

That a red-hot Michigan team beat State in its finale to force the title tie with Indiana did not deter from the 14-8 season record, best for State since 1941-42, and from the 10-4 Big Ten mark, the best since MSU started conference cage competition in 1950-51.



GEORGE FERGUSON  
Forward and Captain





# Central Kentucky Sport Fans Look to for Top Sports Coverage

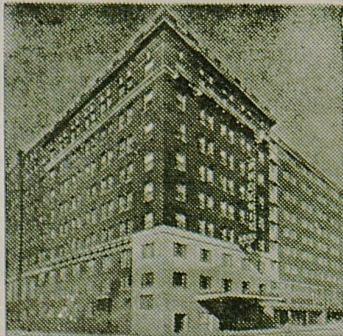
## KENTUCKY

	FG	FT	PF	TP
24 Cox (f)			17	
45 Crigler (f)				
34 Beck (c)		8		
10 Calvert (g)				
52 Hatton (g)				
19 Bayless (f)		0     0		
25 Collinsworth (g)				
33 Ross (g)				
35 Howe (c)				
40 Adkins (g)				
50 A. Smith (g)				
54 Cassady (f-g)				
55 Mills (f-c)				
66 Hardwick (g)				
70 Brewer (f-g)				
88 B. Smith (f-c)				

## PITTSBURGH

W	B	FG	FT	PF	TP
26	26 Pegues (f)				
30	30 Riser (f)				
27	23 Brautigam (c)				
17	17 Hursh (g)				
25	25 Hennon (g)				
10	10 Laneve (g)				
12	12 Lazor (g)				
20	20 Markovich (g)				
21	21 Lester (f)				
24	24 Cercone (g)				
29	29 Zito (g)				
22	31 Woznicki (f)				
32	33 Sawyer (g)				
36	36 Dorman (c)				

OFFICIALS: Southern Conference — Z. J. MIHALIK Atlantic Coast Conference — PHIL FOX



# THE PHOEN

"Lexington's Largest"

OFFICIAL HEADQUARTERS OF

Make It Your Headqu



Look to the Lexington Newspapers  
 coverage in this area



### NOTRE DAME

G	W	FG	FT	PF	TP
10-11	McCarthy (f)				
20-21	Hawkins (f)				
24-25	Smyth (c)				
4-5	Duffy (g)				
30-31	Devine (g)				
22-23	Bedan (c)				
32-33	Morelli (g-f)				
34-35	Sullivan (g)				
40-41	Luepke (c)				
42-43	Williams (f)				
50-51	Reinhart (f)				
52-53	Gleason (g)				

### MICHIGAN STATE

	FG	FT	PF	TP
30	Ferguson (f)			
33	Hedden (f)			
24	Green (c)			
21	Quiggle (g)			
35	Wilson (g)			
11	Lux (g)			
12	Scott (g)			
14	Stouffer (g)			
20	Rand (g)			
22	Reading (f-c)			
23	Anderegg (f)			
25	Jennings (c)			
31	Bencie (c)			
32	Siegmeier (c)			
34	Markovich (f)			

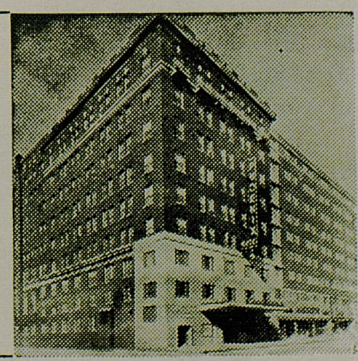
Eastern College Athletic Conference — HAGAN ANDERSON VICKER V. DIGRAVIO

# NIX HOTEL

*Largest and Finest*

HEADQUARTERS OF N.C.A.A. TOURNAMENT

our Headquarters Too!





# UNIVERSITY OF KENTUCKY

## *Southeastern Conference Champions*



SOUTHEASTERN CHAMPIONS — Entering the National Collegiate playoffs for an unprecedented ninth time in quest of a record-breaking fourth NCAA title, Kentucky's Wildcats, 22-4 on the season, carry with them the Southeastern Conference championship. Members of the club are (front row) Coach Adolph Rupp, Ray Mills, Lincoln Collinsworth, Adrian Smith, Gerry Calvert, Bill Cassady, Harold Ross, John Crigler and Asst. Coach Harry Lancaster; (back row) Jay Bayless, John Brewer, Johnny Cox, Bill Smith, Dick Howe, Ed Beck, Vernon Hatton, Earl Adkins, John Hardwick and Manager Ken Lehkamp.

### KENTUCKY ROSTER

No.*	Name	Pos.	Class	Ltrs.	Age	Ht.	Wt.	Hometown
10	Gerry Calvert (g)		Sr.	2	21	5'11"	170	Maysville, Ky.
19	Jay Bayless (f)		Jr.	0	22	6'4"	200	Knoxville, Tenn.
24	Johnny Cox (f)		Soph.	N	20	6'4"	185	Hazard, Ky.
25	Lincoln Collinsworth (g)		Jr.	1	20	6'3"	185	Salyersville, Ky.
33	Harold Ross (g)		Jr.	1	20	6'2"	180	Hickman, Ky.
34	Ed Beck (c)		Jr.	1	20	6'7"	188	Ft. Valley, Ga.
35	Dick Howe (c-f)		Soph.	N	20	6'5"	208	Carbondale, Ill.
40	Earl Adkins (g)		Jr.	1	23	6'4"	180	Ashland, Ky.
45	John Crigler (f)		Jr.	1	20	6'3"	180	Hebron, Ky.
50	**Adrian Smith (g)		Jr.	0	19	6'	178	Farmington, Ky.
52	Vernon Hatton (g)		Jr.	1	20	6'3"	188	Lexington, Ky.
54	Bill Cassady (f-g)		Jr.	1	20	6'2"	191	Inez, Ky.
55	Ray Mills (f-c)		Sr.	2	23	6'4"	199	Manchester, Ky.
66	John Hardwick (g)		Soph.	0	19	6'3"	185	Lexington, Ky.
70	John Brewer (f-g)		Sr.	2	21	6'3"	182	Anchorage, Ky.
88	Bill Smith (f-c)		Jr.	1	20	6'5"	203	Walton, Ky.

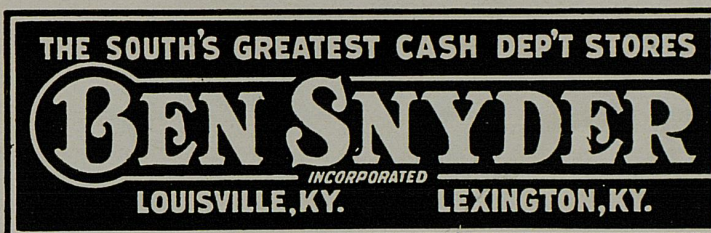
\* Same number on white (home) and blue (road) uniforms.  
 \*\* Junior College transfer.

COACH—Adolph Rupp (26 yrs.—won 538, lost 92)  
 ATHLETIC DIRECTOR—Bernie Shively  
 ASSISTANT COACH—Harry Lancaster  
 COLORS—Blue and White



Today, Ben Snyder is one of Lexington's most modern, most complete department stores. A staff of courteous and experienced people are ready to serve you.

Pay cash, pay less!



*Lexington*  
Store Hours:

MONDAYS  
9 A.M. - 9 P.M.

TUES. - SAT.  
9 A.M. - 5 P.M.

*Drive out to the*

### **STAR LITE DRIVE IN RESTAURANT**

2401 Nicholasville Road At Stone Road

Try our Col. Sanders Recipe of

### **KENTUCKY FRIED CHICKEN**

CURB SERVICE

DINING ROOM

SANDWICHES — SEAFOOD — FOUNTAIN SERVICE

DIAL 2-9351 or 4-9921

*For Carry Out Service*

# Lexington Yellow Cab Co.

Inc.

**ALL  
RADIO CABS**

**Dial 2-2230**

**ALL  
RADIO CABS**

*100% Air-Conditioned*

*On the way downtown*

FREE TV

EVERY ROOM

## **THE KENTUCKIAN HOTEL**

GOOD FOOD

REASONABLY PRICED

— FREE PARKING DECK WITH DIRECT ACCESS TO LOBBY —



# NOTRE DAME

*At Large*



Front row, left to right: John McCarthy, Bobby Devine, Gene Duffy, Ed Gleason and Charlie Wittenburg. Second row, left to right: Henry Luepke, Jack Bedan, Joe Morelli, John Smyth (Capt.), Lee Ayoite and Tommy Sullivan. Third row, left to right: Manager Bruce Fedor, Head Coach Johnny Jordan, Tom Hawkins, Mike Ireland, Jim Williams and Asst. Coach Jim Gibbons.

## NOTRE DAME ROSTER

Number White Green	Name	Pos.	Class	Age	Ht.	Wt.	Hometown
4 5	Eugene Duffy	G	Soph.	19	5-7	150	Davenport, Iowa
10 11	John McCarthy	F	Jr.	20	6-3	185	Chicago, Ill.
20 21	Thomas Hawkins	F	Soph.	20	6-5	205	Chicago, Ill.
22 23	Jack Bedan	C	Sr.	20	6-8	225	Jeffersonville, Ind.
24 25	John Smyth	C	Sr.	22	6-5	225	Chicago, Ill.
30 31	Robert Devine	G	Jr.	21	6-0	165	Philadelphia, Pa.
32 33	Joseph Morelli	G-F	Sr.	22	6-1	190	Albany, N. Y.
34 35	Thomas Sullivan	G	Sr.	23	6-0	180	Oak Park, Ill.
40 41	Henry Luepke	C	Sr.	21	6-8	210	St. Louis, Mo.
42 43	James Williams	F	Jr.	19	6-4	205	Danville, Ill.
50 51	Thomas Reinhart	F	Soph.	19	6-5	205	Minneapolis, Minn.
52 53	Edward Gleason	G	Jr.	20	6-1	185	Chicago, Ill.

COACH — Johnny Jordan

ATHLETIC DIRECTOR — Edward Krause

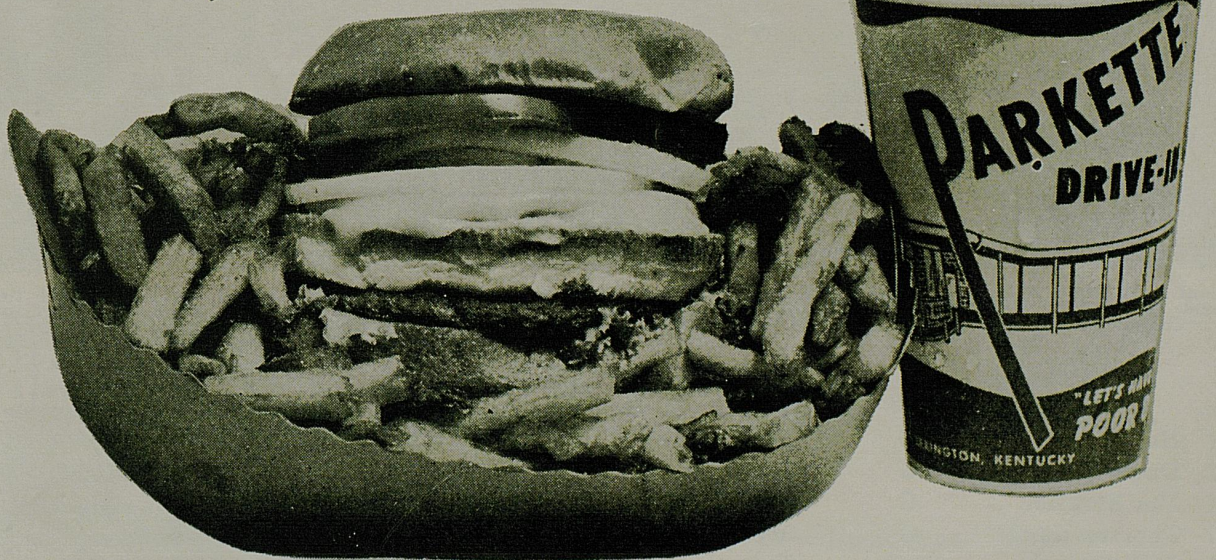
ASSISTANT COACH — James Gibbons

COLORS — Blue and Gold



Try  
Parkette's  
Famous  
"Poor Boy"

"Before  
And After  
The Game  
Or Show,  
The Parkette's  
The Place  
To Go"



19 OTHER  
DELICIOUS  
SANDWICHES !

CHICKEN OR  
JUMBO SHRIMP  
IN THE BOX !

GIANT  
MILK  
SHAKES !

Curb Service — Rain or Shine  
**Parkette Drive In**  
NORTHEAST BELTLINE... ON BYPASS 25



# MICHIGAN STATE

*Big 10 Co-Champions*



Front Row, left to right, Jack Quiggle, Jim Stouffer, Harry Lux, Capt. George Ferguson, Pat Wilson, Dave Scott and Tom Rand. Second Row, left to right: Head Coach Forddy Anderson, Bob Anderegg, Tom Markovich, John Green, Gary Siegmeier, Charles Bencie, Larry Jennings, Larry Hedden, Joe Reading, Assistant Coach Bob Stevens, Trainer Gayle Robinson.

## MICHIGAN STATE ROSTER

No.	Name	Pos.	Class	Age	Ht.	Wt.	Hometown
11	Harry Lux	G	Sr.	21	5-10	150	Chicago, Ill.
12	David Scott	G	Soph.	18	6-2	150	Detroit, Mich.
14	Jim Stouffer	G	Soph.	18	6-0	165	Pierceton, Ind.
20	Thomas Rand	G	Soph.	19	6-2	175	Green Bay, Wis.
21	Jack Quiggle	F-G	Jr.	19	6-3	190	South Bend, Ind.
22	Joe Reading	F-C	Jr.	19	6-5	190	Crystal Lake, Ill.
23	Bob Anderegg	F	Soph.	19	6-3	195	Monroe, Wis.
24	John Green	C	Soph.	22	6-5	215	Dayton, Ohio
25	Larry Jennings	C	Soph.	19	6-5	195	Citrus Hts., Calif.
30	George Ferguson	F	Sr.	20	6-3	190	Providence, R. I.
31	Charles Bencie	C	Jr.	20	6-6	195	Gary, Ind.
32	Gary Siegmeier	C	Soph.	18	6-5	180	Elgin, Ill.
33	Larry Hedden	F	Jr.	22	6-5	185	Gas City, Ind.
34	Thomas Markovich	F	Soph.	19	6-3	195	McKeesport, Pa.
35	Pat Wilson	G	Sr.	21	6-0	186	Lapeer, Mich.

COACH — Forrest (Forddy) Anderson

Record at Michigan State To Date — (Three Years: Won 40, Lost 26)

ASST. COACH — Robert Stevens (Michigan State)

CAPTAIN — George Ferguson

MANAGER — Larry Strong

TRAINER — Gayle Robinson

ATHLETIC DIRECTOR — Clarence (Biggie) Munn

PUBLICITY DIRECTOR — Fred Stabley

(Same Numbers on Both WHITE and GREEN Uniform Sets)



## SERVING . . .

motorists with dependable  
petroleum products since  
the days of the first  
horseless-carriage.

●

### Standard Oil Company

(KENTUCKY)

## HERE'S A SMART PLAY!

WHILE AT THE BALL GAME

"LEAVE YOUR PARKING  
PROBLEM AT  
DICK WEBB'S"

# MAMMOTH GARAGE

MAIN & ROSE  
PHONE 4-7908

LEXINGTON'S  
NEWEST, BIGGEST  
Parking Garage

## Sportsmanship Is Everybody's Job

The visiting teams and the officials tonight are our guests and we as host desire that these visitors shall leave our campus fully inspired with the desire to return, and fully impressed that we have rendered a genuine spirit of true southern hospitality. In order to accomplish this objective it is recommended that we all strive to:

- Make our guests feel at home and wish to return.
- Keep in mind that your team plays away from home and desires good treatment.
- The officials assigned here are gentlemen of good character and standing in their community. Respect their opinions and decisions. They have been given thorough and competent training and have had more experience through the years. Basketball officiating is considered the most difficult of all arbitering.
- All teams have been well coached and have practiced diligently. Each is entitled to reflect this training and to show that their success is not luck nor a gift from the officials. Give credit and recognize ability when due.
- Booing is a sign of a poor sport. It is the source of all poor conduct and lack of good manners. Eliminate it.

The impression your visitors gain depends on you. Let's prove that we can be courteous and hospitable.

## PERRY LUMBER CO. Inc.

Contractors and Builders

*We Build Anything Anywhere*

- BUILDERS SUPPLIES
- ROOFING
  - SASH & DOORS
  - MILLWORK
    - HARDWARE
    - PAINT
      - SPORTING GOODS
      - APPLIANCES

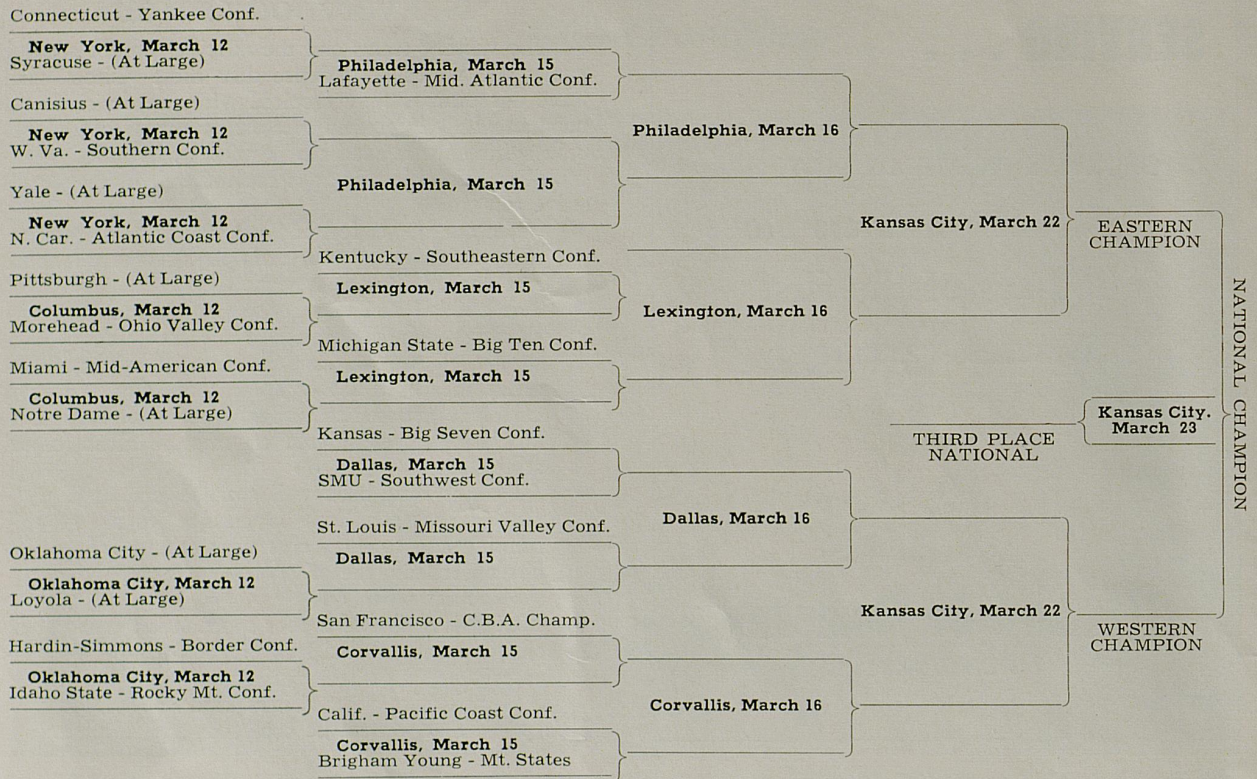
246 Walton Avenue

Phone 2-6366

LEXINGTON, KY.



# 1957 National Collegiate Basketball Championship Bracket



The New Way is

*Lusterway*

"dry" dry cleaning

- ★ NO-SHRINK PROCESS
- ★ BRIGHTENS COLORS
- ★ SOFTENS TEXTURE
- ★ SAFE AND GENTLE
- ★ LINT-FREE AND CLING-FREE

Exclusive  
At

**BECKER**

**Launderers --- Cleaners**

6 Convenient Locations

S. Lime At Euclid Walton & Aurora  
 S. Lime At Vine Southland Shopping Center  
 4th & Broadway High & Euclid

**SEE us NOW to BUY**

JOHNSON Outboard Motor  
and a

THUNDERBIRD Fiberglass Boat

or a

WHIRLWIND Molded Plywood Boat

or a

DURACRAFT Aluminum Boat

ALL IN 14 OR 16 FT. OR A CRUISER

*For Your Boating Pleasure*

EASY TERMS

**LEXINGTON OUTBOARD MARINE**

436 E. Vine

Tele. 5-2916

Lexington, Ky.

Next to Cadillac Garage



W. P. CURLIN H. D. PALMORE J. S. SIMCOX, JR.  
*General Manager Vice-President & Lexington  
Chief Engineer Plant Manager*

## Kentucky Concrete Pipe Company

A Division of Hannah Motors, Inc.

### ALL SIZES:

Drain Pipe — Sewer Pipe  
Highway Culvert Pipe  
Railway Culvert Pipe

### Plants

Lexington, Ky.	- - - -	Phone 2-2848
Louisville, Ky.	- - - -	SPring 4-5769
Owensboro, Ky.	- - - -	MUrray 3-7726
London, Ky.	- - - -	Phone 637

### MAIN OFFICE:

P. O. Box 68, Frankfort, Ky.  
Phone CApital 3-3491



**ON THE MARCH  
AND  
Leading The Way  
TO  
BETTER RADIO**

**FIRST  
IN  
SPORTS  
NEWS -- MUSIC**

**WLAP** 630  
ON  
YOUR DIAL  
LEXINGTON, KY.

**Laundry Dry Cleaning**

# DeBoor

*15% Discount Cash and Carry*

**ONE-DAY SERVICE — NO ADDED  
CHARGE**

265 Euclid Avenue 880 E. High  
1966 Harrodsburg Road

Phone 3-0235

**KERR BROS.  
Funeral Home**

463 E. Main Street

Phone 2-3343



**AMBULANCE SERVICE**



*The Merchants Listed On These Pages Extend*

*You Are Always Welcome At*

**Begley's**

**The Begley Drug Co.**

North Lime at Carlisle      878 E. High  
404 Southland Drive

**CARPENTER-WARREN  
Insurance Agency**

*"We Pay Cash for your Ashes"*

**AUTOMOBILE — FIRE — BURGLARY  
SURETY BONDS**

**WORKMEN'S COMPENSATION**

143 N. UPPER ST.

PHONE 2-4155

**Quality Packing Co.**

**The Very Best  
MEATS**

Box 1018      —      Phone 4-4744  
LEXINGTON, KY.

**SERVING APPROXIMATELY  
80,000 TELEPHONES  
THRU 23 EXCHANGES**

**General Telephone Company  
OF KENTUCKY**

**Yeary Transfer Co.**

INC.

LEXINGTON, KENTUCKY

*Long Distance Furniture Moving*

Telephone 4-3288

**CASELL'S PHARMACY**

140 N. Upper

4 REGISTERED PHARMACISTS TO  
SERVE & FILL YOUR PRESCRIPTIONS

*We Deliver*

Phone 2-3434

JOE WARREN

JOE PRYOR

**Thompson King Tate**

INC.

**READY-MIXED CONCRETE  
BLACKTOP DRIVEWAYS  
ALL TYPES OF CONCRETE WORK**

701 East Seventh St.

2-1932



2-1933

**ECTON SUPPLY CO.**

1060 W. High

Phone 3-5727

LEXINGTON, KY.

**International Harvester  
Farm Machinery**

PAINT

HARDWARE

McCULLOUGH CHAIN SAWS



*A Most Hearty Welcome To Tournament Visitors*

Where Friends Always Meet  
While Shopping in

**CONVENIENT  
CHEVY CHASE VILLAGE**

80 Shops and Services

Y'ALL COME

**Ecklar-Moore Express Inc.**

*"Through The Heart of the Blue Grass"*

Phone 4-2373

CALL US FOR EFFICIENT  
AND FAST SERVICE

Lexington, Ky.

**L. L. ROBERTS  
FURNITURE CO.**

See our Nationally Famous  
CHERRY SHOP

425 W. Main St.

Lexington

**LEXINGTON DAIRY**

716 National Ave.

Lexington's Only Complete Dairy

THE FAMILY'S FAVORITE

**ADES-LEXINGTON DRY GOODS CO.  
INC.**

*Wholesale Distributors*

249 East Main St.

LEXINGTON

KENTUCKY

DAVID ADES

LOUIS R. ADES

**Town-House Motel**

*Air-Conditioned*

SOUTH LIME AT ROSE

Lexington, Ky.

Phone 3-5274

Ride A BUS To and From  
— The Games —

- ▶ SAFE
- ▶ ECONOMICAL
- ▶ FAST

Lexington Transit Co.

*Baynham's  
shoes of distinction*

FLORSHEIM • FRENCH-SHRINER  
PALIZZIO • CAPEZIO



# THOROUGHBRED LANDMARKS

## —In Central Kentucky



MAN O' WAR STATUE—At a cost of \$50,000 the late Samuel D. Riddle erected this monument to his great horse. Begun in 1941 by Sculptor Herbert Haseltine, it was not completed until 1947, a few months before the horse's death. The statue attracts nearly as many visitors daily to Faraway Farm as did the great horse it honors.

KEENELAND CLUB—This structure, now a private club at Keeneland, was the start of the late Jack Keene's "dream track." Begun in 1916, it was to house race horses on the first floor, and on the second and third floors were to be living quarters, club rooms, dining rooms—and even a ball room. Keene is reported to have spent \$400,000 on the building. Unable to complete the track he hoped to operate purely for sport's sake, Keene sold the structure and 148 acres to Keeneland Association in 1935.





COMPLETE  
HOME  
FURNISHINGS

*Standard*  
FURNITURE CO

221 E. Main St.

Lexington, Ky.

The Best of Dairy

PRODUCTS

Dixie Bell Dairy  
Company



315 North Limestone Street

LEXINGTON, KY.

*We Welcome to Lexington all Interested  
Basketball Tournament Fans. We Sincerely  
Hope Your Visit Will be a Pleasurable  
One and While Here Make Hymson's  
Tots & Teens Your Shopping  
Headquarters for Women and Children's  
Wearing Apparel.*



*Hymson's*  

---

*Tots & Teens*

Metropolitan Restaurant

117 W. SHORT ST.

Country Ham

Steaks

Plate Lunches

Short Orders

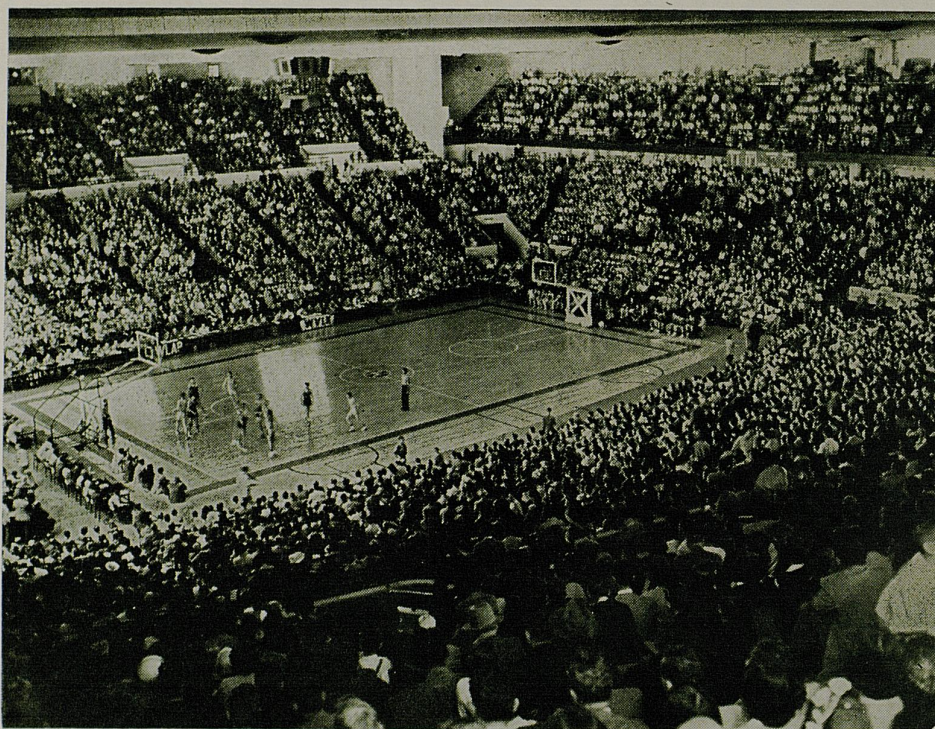
*Open 24 Hours A Day*

GOOD FOOD

Reasonable Prices

"WELCOME TOURNAMENT FANS"





MEMORIAL COLISEUM

Only a little more than a quarter century ago, the University of Kentucky provided its basketball team with its second home—a magnificent new Alumni Gymnasium seating 2,800 spectators.

A great many persons freely suggested that the arena would prove to be a "white elephant" which would never be crowded to anywhere near capacity by the sport that then was considered little more than an innocuous winter-month's pastime.

But the hardwood game blitzed the nation and Kentucky's teams forged to the national forefront in such a crowd-pleasing manner that the "huge" hall soon could not begin to accommodate the large number of fans seeking to whet their new-found interest. In fact, the situation soon developed to the point where only the student body and faculty were admitted and for several years about all that Kentuckians at large knew of their state university's famed cage teams consisted of information gleaned from the press and radio.

In 1941, when Dr. H. L. Donovan became president of the University, one of his first recommendations was

for a building "that will properly take care of our athletics, our health service, physical education, and recreation." From this beginning came the plan that culminated in the construction of 11,500-seat Memorial Coliseum, an unparalleled edifice costing \$3,925,000 by the time it was completed in 1950.

The huge building, which serves as a memorial to the nearly 10,000 Kentucky heroes who lost their lives in World War II and the Korean conflict, covers an entire city block and contains as much space as a seven-story office building. Situated along Avenue of Champions, the Coliseum is used primarily for basketball games but also serves as the site of a sellout community concert and lecture series as well as numerous physical education classes and conventions.

In sharp contrast to the early days in Alumni Gym, the present hall plays host to more than 100,000 Kentuckians annually for appearances of the famous Wildcat cage teams alone and interest is increasing with such strides that even this splendid arena may soon be outgrown.



**PURCELL'S**

**... your COMPLETE  
Department Store!**

*No Sale is Complete at  
Purcell's Until YOU Are  
Completely Satisfied!*

. . . Central Kentucky's Leading  
Department Store . . . Since 1887



The success of your future and  
your interests is dependent on  
the American way of life and  
our free enterprise system.  
What are you doing about pre-  
serving these cherished rights  
of every American?

Donated by

**Kawneer Company**

...

Buy with Confidence at . . .

**Stewart's**

LEXINGTON

Compliments of

**BLUE GRASS LODGE NO. 4  
FRATERNAL ORDER OF POLICE**

*"F. O. P. The Only National Police Order"*

VISIT OUR

*Young Sophisticate Shop*

**EMBRY & CO.**

141 E. Main

80 MILES FRESHER

**NIC NAC**

POTATO CHIPS



ALL KENTUCKY GAMES  
in the  
**N.C.A.A. BASKETBALL  
TOURNAMENT**

*Are Being Broadcast Over*

dial  
**590**



**WVLK**

dial  
**590**

*The Kentucky Colonel Station*

*Play-By-Play With*

**CLAUDE SULLIVAN**

*Sponsored By*

**STANDARD OIL**

AND YOUR STANDARD OIL DEALER

— **Also** —

ALL GAMES OF THE

**WV HIGH SCHOOL BASKETBALL TOURNAMENT**

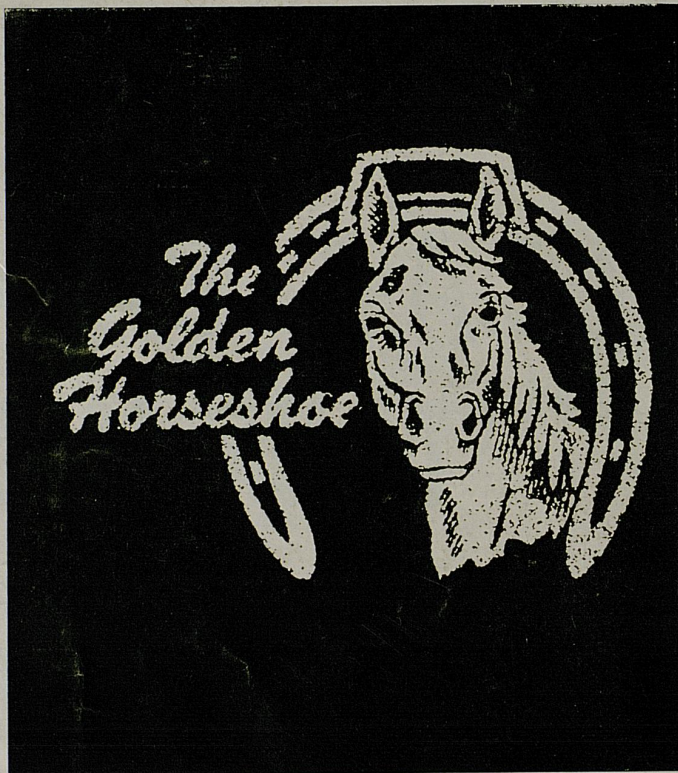
**WILL BE HEARD OVER WVLK**







THOMAS FRIEDMAN, Mgr.



ALWAYS SHOP . . . . .

# McCRORY'S <sup>5 - 10</sup> STORE <sub>25c</sub>

For a Quick Snack Or a Delicious Meal

Visit McCrory's Resturant in Rear of Main F

**McCRORY'S--NEXT DOOR TO PHOENIX** TO CHIPS