

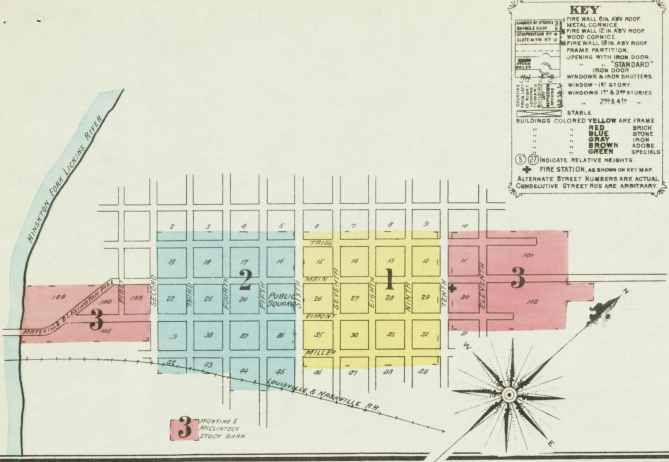
INDEX.



SPECIALS.	INDEX	INDEX	
Baptist Church,	B	I	
Bea Military Institute,	1	L	
Bent, C. S. & Bro., Poultry,	2	M	
Bryan's Block,	2	McDonald, P., Carriage Shop,	1
Butler, Mrs. F. A., Grain and Tob. W. H.,	2	McIntyre & McClintock, Stock Barn,	2
Christian Church,	2	Methodist Episcopal Church, Colored,	2
Current, M. H., Carriage Shop,	2	Miller, Mrs. J. A., Tobacco Warehouse,	2
Evans, R. M., Flour Mill,	3	Miller's Block,	1
First Presbyterian Church,	F	Millersburg Female College,	1
Grimes, J. A., Distillery,	G	Public School,	P
Hall, J. E., Carriage Shop,	H	Stewart, J. H., Grain Warehouse,	S
Hutchcraft, R. B., Tobacco Warehouse,	2	Union Benevolent Hall, Colored,	U
		Vimont Block,	V

NOTE:
 WATER PRIORITIES: PUBLIC UTILITIES AS SHOWN. PRIVATE UTILITIES IN BILLS. FIRE ALARMS, TELEPHONE, CABLE, AND ACTIVE UTILITIES. THE FIRE COMPANIES' CONNECTIONS AND MANNERS. ROOMS. COLLECTOR'S MARKS. CUSTOMER'S MARKS. LIGHTS (SINGLE LIGHTS) MADE IN GRID CONNECTION. SEE INDEX BOOKS FOR COLUMBIAN, 2 FEET ONE HUNDRED L. SCALE. SEE INDEX BOOKS FOR REAL STREET'S, MACBETH'S, TOWN LIGHTS, PENDING OIL.

Map Division
 JAN 4 1904
 Library of Congress



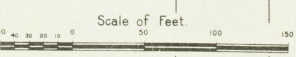
Nov 1908
MILLERSBURG
KY.

TRIGG

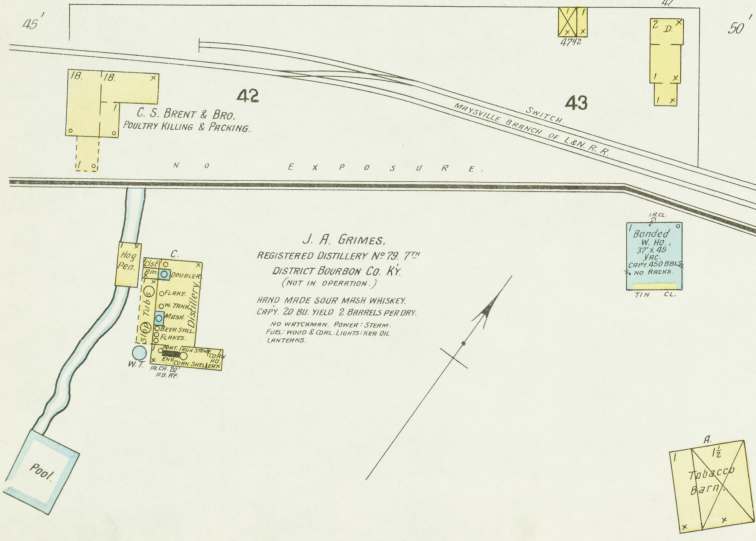
MAIN

VIMONT

MILLER



J. A. GRIMES.
REGISTERED DISTILLERY NO 29 77M
DISTRICT BOURBON CO. KY.
(NOT IN OPERATION.)
HAND MADE SOUR MASH WHISKEY.
CAPTY 20 BU. YIELD 2 BARRELS PER DAY.
100 WATERMAN. POWER - STEAM.
FUEL - WOOD & COAL. LIGHTS - KERO. OIL.
LANTERNS.



Banded
W. No.
37' x 40'
100
CORN 250 BBS.
NO RAILS

Tobacco
Bin

Mrs. JOSE R. MILLER,
Tobacco W. No.

Mrs. T. B. BUTLER,
Grain & Tobacco W. No.

R. B. HUTCHCRAFT,
Tobacco W. No.

J. H. STEWART,
GRAIN W. NO.

CHRISTIAN
CHURCH

W. HO.
W. HO.

19
18
22
26
28
30

18
36
42
44
46

19
25
29
18
24
30

33
39
45
32
34
40

51
57
63
48
54
58

Public
Square.

36
70
76

45
81
87

42
43
47

44
40
42
44

2
3
4

4
48
50
54

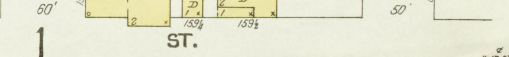
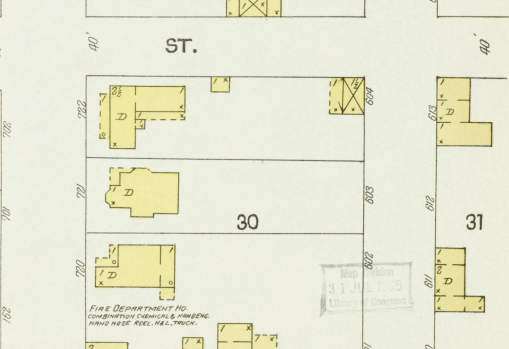
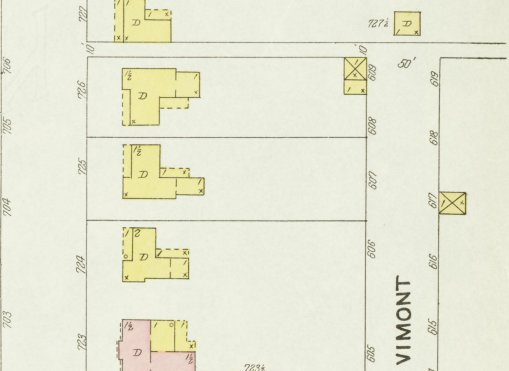
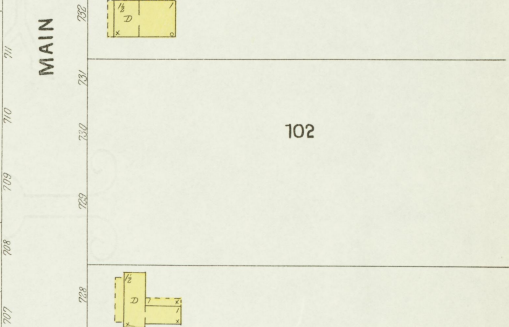
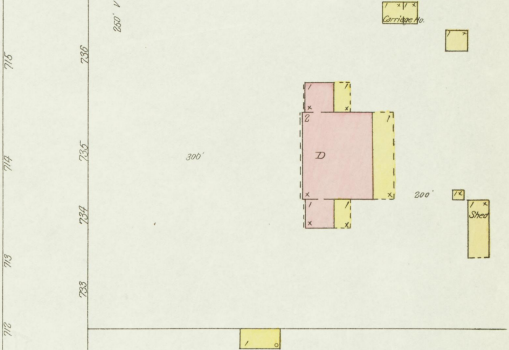
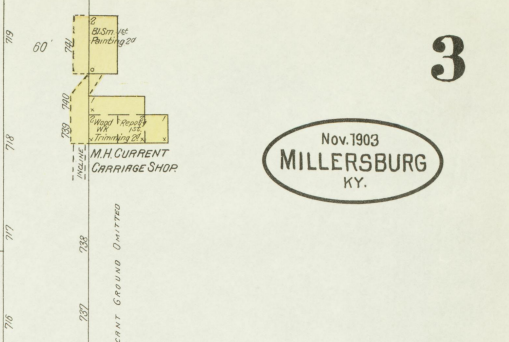
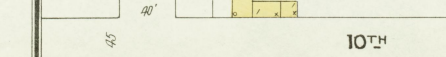
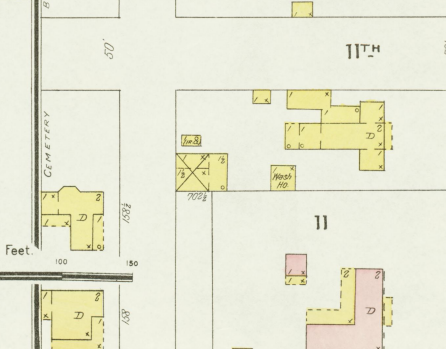
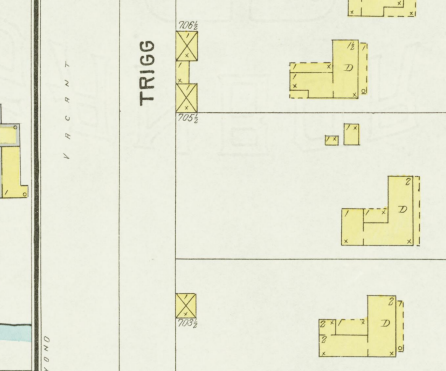
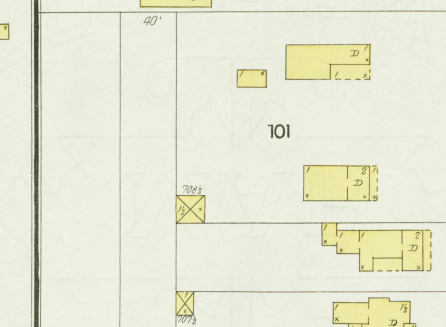
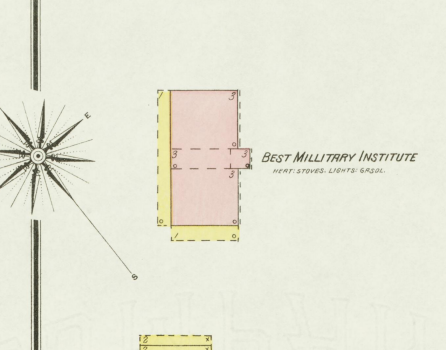
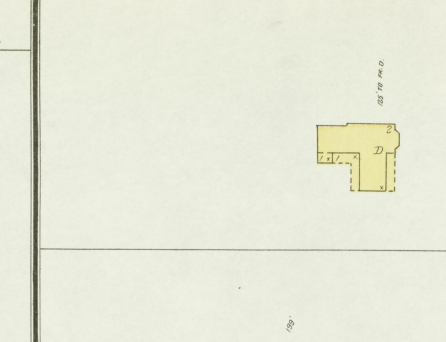
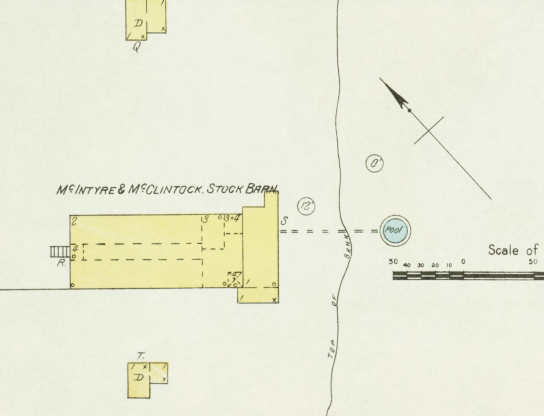
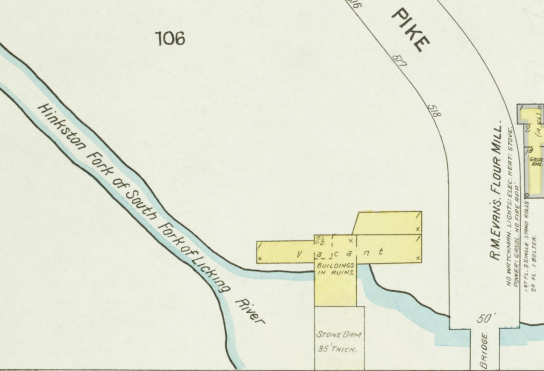
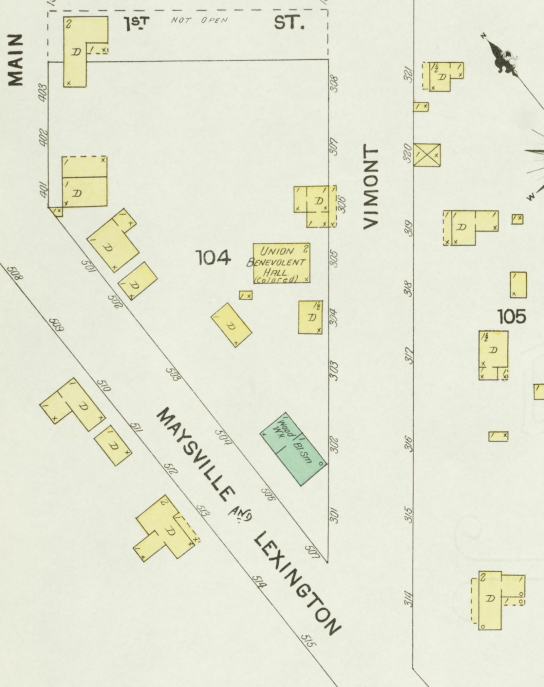
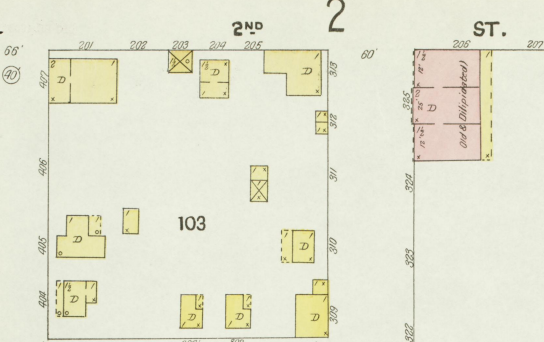
5
66

2

1

116 5/8

Nov. 1903
MILLERSBURG
KY.



FIRE DEPARTMENT NO.
COMPARTMENT COLUMBIA & HOWARD
WARD FIRE TRUCK #42 TRUCK