

FW 4.14:
F317
Ser. 2
no. 4



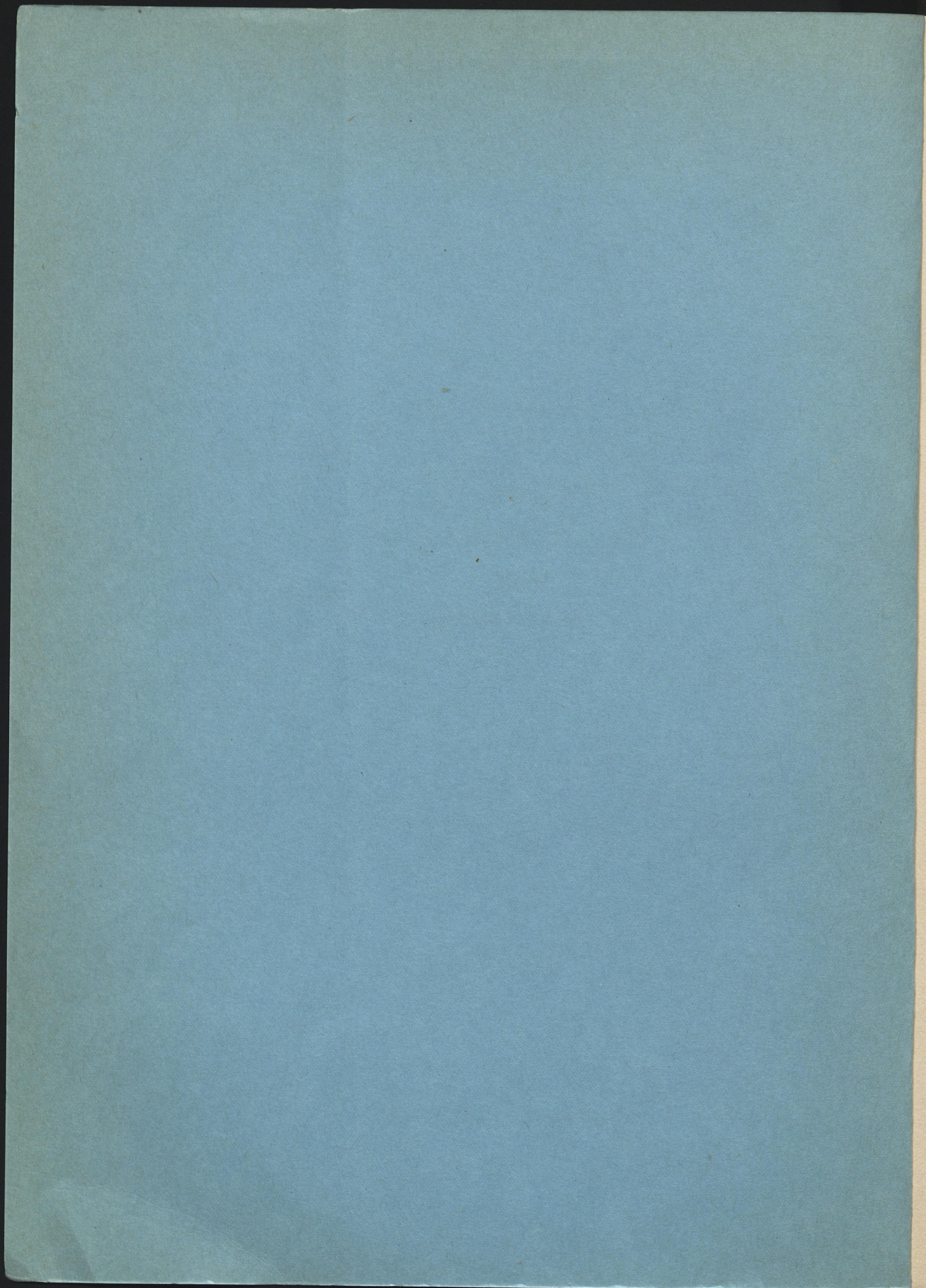
INVENTORY OF
FEDERAL ARCHIVES
IN THE STATES

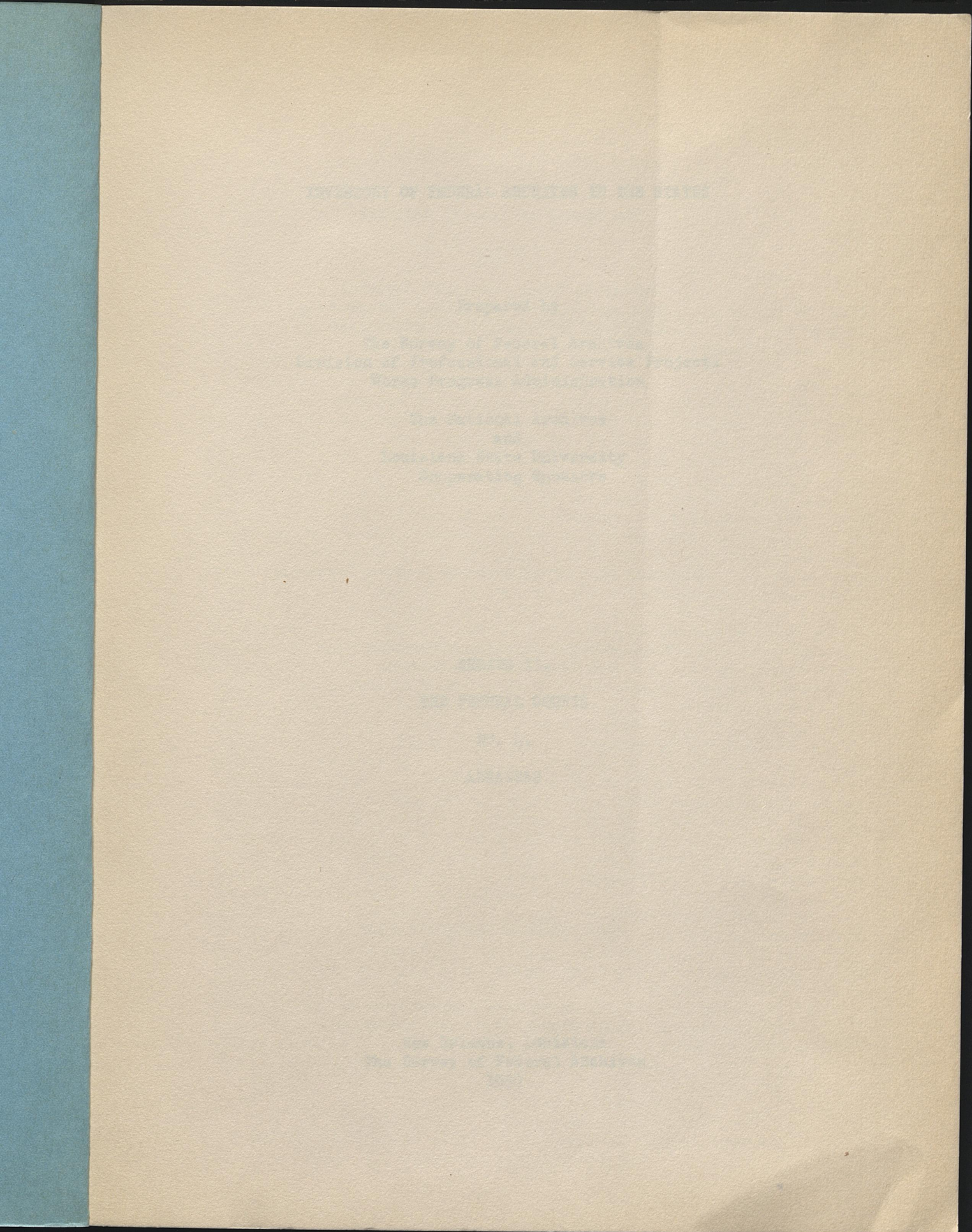
SERIES II.
THE FEDERAL COURTS
NO. 4
ARKANSAS

DEPOSITORY

UK LIBRARIES

SURVEY OF FEDERAL ARCHIVES
WORK PROJECTS ADMINISTRATION
DIVISION OF PROFESSIONAL AND SERVICE PROJECTS
NEW ORLEANS, LOUISIANA





INVENTORY OF FEDERAL ARCHIVES IN THE STATES

Prepared by

The Survey of Federal Archives
Division of Professional and Service Projects
Works Progress Administration

The National Archives
and
Louisiana State University
Cooperating Sponsors

SERIES II.

THE FEDERAL COURTS

NO. 4.

ARKANSAS

New Orleans, Louisiana
The Survey of Federal Archives
1939

REPORT OF THE SURVEY OF FEDERAL ARCHIVES IN THE STATES

The Survey of Federal Archives

Philip M. Hamer, National Director
Stanley C. Arthur, Regional Director
Elizabeth Chenault, State Supervisor

Division of Professional and Service Projects
Work Projects Administration

The National Archives
and
Louisiana State University
Geographic Systems

Division of Professional and Service Projects

Florence Kerr, Assistant Administrator
Dot Kennan, State Director

THE FEDERAL COURTS

U. S. J.

BARBARA

WORK PROJECTS ADMINISTRATION

F. C. Harrington, Administrator
Floyd Sharp, State Administrator

The Survey of Federal Archives

1954

PREFACE

The Inventory of Federal Archives in the States is one of the products of the work of the Survey of Federal Archives, which operated as a nation-wide project of the Works Progress Administration from January 1, 1936 to June 30, 1937.

The plan for the organization of the Inventory is as follows: Series I consists of reports on the administration of the Survey, acknowledgments, and general discussions of the location, condition, and content of federal archives in the states. Succeeding series contain the detailed information secured by workers of the Survey, in inventory form, a separate series number being assigned to each of the executive departments (except the Department of State) and other major units of the Federal Government. Within each series No. 1 is a general introduction to the field organization and records of the governmental agency concerned; the succeeding numbers contain the inventory proper, separate numbers being assigned to each state in alphabetical order. Thus, in each series, the inventory for Alabama is No. 2, that for Arizona No. 3, that for Arkansas No. 4, etc.

For each local office information regarding each series, or unit of related records, is presented in the following order: title, inclusive dates ("to date" indicating an open file at the time the information was secured), general description of informational content, description of the system of filing or indexing (if any), a statement of frequency and purpose of use, form of the record itself (bound volumes, sheets in folders, etc.), linear footage, description of the containers, physical condition of the records (not stated if satisfactory), location by room number or other identifying information, and finally, the number of the Form 588A on which this information was originally recorded by a Survey worker and from which it was abstracted for the Inventory. This form is on file in The National Archives. When it contains substantial information on addenda sheets which has not been included in the mimeographed abstract, indication of this is given by use of the reference "See addenda."

In Arkansas the work of the Survey was under the direction of Mr. Stanley C. Arthur, Regional Director for Arkansas, Louisiana, and Mississippi, with Mr. D. T. Henderson, who was succeeded in January 1937 by Mrs. Elizabeth Chenault as state supervisor, from its inception until June 30, 1937. This Inventory of the records of the Federal Courts in Arkansas was prepared in the New Orleans, Louisiana office of the Survey under the direction of Mrs. Norris B. Fazekas, editor-in-chief and assistant state supervisor and was edited before final typing by Dr. Richard R. Stenberg of the Washington office.

Stanley C. Arthur
State Supervisor
Survey of Federal Archives
in Louisiana

New Orleans, Louisiana
December, 1939

CONTENTS

	Page
INTRODUCTION.	1
UNITED STATES DISTRICT COURTS	
EASTERN DISTRICT - NORTHERN DIVISION	
Batesville	
Deputy Clerk	4
Referee in Bankruptcy.	4
EASTERN DISTRICT - JONESBORO DIVISION	
Jonesboro	
Deputy Clerk	4
General	4
Civil	5
Equity.	5
Bankruptcy.	6
Criminal	6
United States Commissioner.	7
Naturalization.	7
Fiscal Accounts	7
Miscellaneous	7
Correspondence.	8
Referee in Bankruptcy.	8
United States Commissioner	8
EASTERN DISTRICT - WESTERN DIVISION	
Little Rock	
Clerk.	9
Old Circuit Court Records	9
District Court Records.	9
General.	9
Civil	10
Equity	10
Bankruptcy	11
Criminal	12
Naturalization	13
Fiscal Accounts.	13
Miscellaneous	13
Correspondence	13
Probation and Parole Officers	14
Hot Springs	
United States Commissioner	15
WESTERN DISTRICT - EL DORADO DIVISION	
El Dorado	
Deputy Clerk	15
General	16

CONTENTS

	Page
Equity.	16
Bankruptcy.	16
Special Civil Matters	17
Criminal.	17
United States Commissioner.	17
Naturalization.	17
Fiscal Accounts	18
Miscellaneous	18
Correspondence.	18
 WESTERN DISTRICT - FORT SMITH	
Fort Smith	
Clerk	19
Old Circuit Court Records.	19
District Court Records	20
General	20
Civil	23
Equity.	24
Bankruptcy.	24
Admiralty	26
Special Civil Matters	26
Criminal.	26
United States Commissioner.	27
Naturalization.	28
Attorneys	28
Fiscal Accounts	28
Miscellaneous	29
Correspondence.	31
Probation and Parole Officer	32
 Fayetteville	
United States Commissioner.	33
 WESTERN DISTRICT - HARRISON DIVISION	
Harrison	
Deputy Clerk.	33
Old Circuit Court Records.	33
District Court Records	34
General	34
Civil	35
Equity.	36
Bankruptcy.	36
Criminal.	37
United States Commissioner.	37
Naturalization.	37
Fiscal Accounts	37
Miscellaneous	38
Correspondence.	39

CONTENTS

	Page
WESTERN DISTRICT - TEXARKANA DIVISION	
Texarkana	
Deputy Clerk.	39
Old Circuit Court Records.	39
District Court Records	40
General.	40
Equity	41
Bankruptcy	42
Admiralty.	43
Criminal	43
United States Commissioner	43
Naturalization	43
Attorneys.	44
Fiscal Accounts.	44
Miscellaneous.	45
Correspondence	45
Referee in Bankruptcy	46

INTRODUCTION

In 1806 the present state of Arkansas, part of the Louisiana Purchase of 1803, was designated the Arkansas District of the Territory of Missouri, and was under the jurisdiction of the Missouri Territorial courts. On March 2, 1819 this area became the Territory of Arkansas, and a Superior court was created with jurisdiction over matters involving the Federal Constitution. The first Territorial seat of government was the old Arkansas Post. The capital was located at Little Rock in 1821.

The Federal powers of the Arkansas superior court were more definitely defined by an Act of Congress of April 17, 1828, which provided for additional compensation for the judges who handled Federal matters in addition to their other court duties.

When Arkansas became a state on June 15, 1836, Congress organized the district court for the District of Arkansas, with jurisdiction over the whole state and that country later organized into the Indian Territory. As all matters involving Indians fell within its jurisdiction, the dockets of the court were heavy.

The district court sat only at Little Rock until the state was divided into Eastern and Western Districts by the Act of March 3, 1851, which specified that "the counties of Benton, Washington, Crawford, Scott, Polk, Franklin, Johnson, Madison, and Carroll, and all that part of the Indian country lying within the present judicial district of Arkansas, shall constitute a new judicial district, to be styled 'the Western District of Arkansas', and the residue of said state shall be and remain a judicial district to be styled 'the Eastern District of Arkansas'." The act provided for two terms of court to be held at the town of Van Buren in the Western District, with Little Rock as the court seat for the Eastern District.

Later acts altered the boundaries of the two districts by the addition of new counties within their respective jurisdiction.

Van Buren remained the seat of the court for the Western District, with the exception of the period of the War Between the States, until the Act of March 3, 1871 provided that the court be moved to Fort Smith, where the first session was held May, 1871.

Under the Act of January 31, 1877, two clerks for the Eastern District were appointed, one to hold office in Little Rock and the other in Helena. In the Western District, court was to meet at Fort Smith.

The Eastern and Western Districts were divided into divisions by an Act of Congress of February 20, 1897. The Eastern District was divided into three divisions, namely: the Western Division, Little Rock; Eastern Division, Helena; and Northern Division, Batesville. The Western District was divided into two divisions: Texarkana and Fort Smith.

Eastern District

The Eastern District of Arkansas presently consists of four divisions

as established by Act of March 3, 1911, with court seats at Little Rock, Western Division; Helena, Eastern Division; Batesville, Northern Division; and Jonesboro, Jonesboro Division.

The district court sits at Little Rock in the Western Division, on the first Monday of April and the Third Monday of October, and occupies quarters in the U. S. Post Office and Courthouse. It has jurisdiction over cases originating in Arkansas, Chicot, Clerk, Cleveland, Conway, Dallas, Drew, Faulkner, Garland, Grant, Hot Springs, Jefferson, Lincoln, Lonoke, Montgomery, Perry, Pope, Prairie, Pulaski, Saline, Van Buren, White, and Yell Counties.

The court for the Eastern Division is required to sit at Helena on the second Monday of March and the first Monday of October, and has jurisdiction over Desha, Lee, Phillips, St. Francis, Cross, Monroe, and Woodruff Counties.

Court is held at Jonesboro in the Jonesboro Division the first Monday of May and the fourth Monday of November of each year, and occupies quarters in the U. S. Post Office and Courthouse. Its jurisdiction covers Crittenden, Clay, Mississippi, Lawrence, Craighead, Greene, Poinsett, and Randolph Counties.

Court is required to sit at Batesville in the Northern Division on the fourth Monday of May and the second Monday of December, and occupies quarters in the U. S. Post Office and Courthouse. This division embraces Cleburne, Fulton, Izard, Jackson, Sharp, Stone, and Independence Counties.

The records of the Eastern District in Little Rock are intact from 1865 to date. Many records originating during the period of 1836 to 1865 were lost, but some were later found under the platform of the House of Representatives in the old State House and are now preserved in an iron safe in the office of the clerk.

The clerk at Little Rock keeps the court records for all four divisions of the Eastern District with the exception of a few held by the deputy clerks at Batesville and Jonesboro.

Western District

The Western District of Arkansas was divided into three divisions by the Act of March 3, 1911, with court seats at Texarkana, Fort Smith, and Harrison, the latter division having been created by Act of March 18, 1902. A new division of the Western District was created by Act of February 17, 1925, and was known as the El Dorado Division. These four divisions presently comprise the Western District of Arkansas.

The district court for the Fort Smith Division held its first session in May 1871, in the second story of a brick building that stood near the western corner of 2nd and "A" Streets on ground now occupied by several wholesale houses. On the night of November 13, 1872, when the building in which court was held burned, the records were saved. A two-day session was then held in the Sebastian County Circuit Court room, in what is now known as the LeFlore Hotel, pending an arrangement with the Department of the Interior for the use of a large brick barrack inside the garrison walls of Fort Smith, an outpost established by the army in 1839 and named in honor of General Thomas Smith. This old fort, now known as the Welfare Building, housed the court until 1893, when it moved to the U. S. Post Office and Courthouse, which building was recently demolished, a new Federal building being erected on its site.

The records of the court date back to 1855, although they are incomplete for the period prior to the War Between the States because of the destruction of a portion of them during a raid upon Van Buren by Federal troops.

As it had jurisdiction over Western Arkansas, the Indian Territory, and the five civilized tribes, "this court became the largest criminal court in the world." Judge Isaac Parker, sitting in the court during the period of ruffianism in the Indian Territory, which followed the War Between the States, tried 13,000 criminals in a period of twenty-five years. Jurisdiction over Indian Territory ended September 1, 1896.

The Fort Smith Division now embraces Polk, Scott, Logan, Sebastian, Franklin, Crawford, Washington, Benton, and Johnson Counties. The statute requires that the court sit in Fort Smith the second Mondays of January and June.

The Harrison Division includes Baxter, Boone, Carroll, Madison, Marion, Newton, and Searcy Counties. From the inception of the court in 1902 until 1906 it sat in the Harrison County Courthouse, the records being kept at Fort Smith. Upon the completion of the U. S. Post Office and Courthouse in 1906, all records were removed to the clerk's office in that building, where the court occupies its present quarters. The present statute requires that the court sit in this division the first Mondays of April and October.

The Texarkana Division is composed of Sevier, Little River, Hempstead, Lafayette, Howard, Pike, Miller, and Nevada Counties. The present statute requires that the court sit at Texarkana the second Mondays of May and November. It occupies quarters in the Federal Building.

The Eldorado Division, created July 1, 1925 from several counties formerly in the Texarkana Division, embraces Columbia, Union, Ouachita, Ashley, Bradley, and Calhoun Counties. The court sits in the U. S. Post Office and Courthouse on the third Mondays of April and October.

Circuit Court

Circuit courts were never established in Arkansas as separate entities. The Act of March 3, 1851, dividing Arkansas into Eastern and Western Districts, also provided that the district courts of the state function as circuit courts. For that reason there are very few circuit court records in the several jurisdictions of Arkansas, since most of the matters submitted for adjudication were handled by the district court of the respective district in which the cause arose or the offense was committed. In 1911 Congress passed an act abolishing the several circuit courts, and the various district courts became courts of exclusive original jurisdiction.

UNITED STATES DISTRICT COURTS
EASTERN DISTRICT - NORTHERN DIVISION

BATESVILLE

Deputy Clerk
U. S. Post Office and Courthouse
Fourth and Main Sts.

The court was located on the second floor of the Adler Building, on Main Street, between First and Central Avenues, until 1906, when the present United States Post Office and Courthouse was erected. Records of cases are sent to the office of the district clerk at Little Rock with the exception of those here listed.

1. DOCKETS, 1897 to date. Showing proceedings in cases, principally damage suits and ordinary law matters. Entered alphabetically. (Frequently, official.) 11 1/2 x 14 1/2 loose-leaf books, 8 ft., in 16 drawers of steel filing cases. R. 22. (55)

2. COMPLAINTS, WARRANTS, AND SUBPOENAS, 1897 to date. Filed numerically. (Occasionally, official.) 10 1/2 x 14 1/2 folders, 4 ft., in 8 drawers of steel filing cases. R. 22. (54)

Referee In Bankruptcy
Telephone Bldg., 140 Church St.

3. FINAL JUDGMENT RECORD, Apr. 1906 to date. Showing final judgments in bankruptcy cases. Entered chronologically. (Seldom, official.) 8 1/2 x 14 vols., 3 ft., in drawer of steel filing case. R. 123. (56)

EASTERN DISTRICT - JONESBORO DIVISION

JONESBORO

Deputy Clerk
U. S. Post Office and Courthouse, S. Church St.

(General)

4. JUDGMENT DOCKET, May 15, 1912 - Nov. 27, 1925. Showing number of

judgment, parties, action, attorney, when rendered, record page, damages and costs, execution, when issued, when returnable, marshal's return, and when judgment was satisfied. Entered numerically. (Seldom, official.) 15 x 18 vol., 3 in., on open steel shelf. R. 205. (5)

5. EXECUTION DOCKET, July 18, 1912 - Oct. 8, 1923. Record of writs of fieri facias issued and executed. Entered chronologically. (Seldom, official.) 12 x 18 vol., 3 in., on open steel shelf. R. 205. (3)

6. LAW CASES, Aug. 5, 1912 - May 9, 1921; Jan. 16, 1923 to date. Records of closed and pending cases. Filed numerically. (Older records, seldom; current records, frequently, official.) 9 x 15 folders, 22 ft., in drawers of steel filing cases. Rs. 205 and 207. (21, 27, 34)

7. CLERK'S WRIT RECORD, Jan. 23, 1912 to date. Clerk's record of writs issued by the court. Index. (Seldom, official.) 12 x 18 vol., 4 in., on open steel shelf. R. 205. (1)

8. INDEX TO JUDGMENT DOCKET, Feb. 19, 1925 to date. Gives names of parties, number of case, and numbers of page and docket. (Occasionally, official.) 12 x 16 vol., 5 in., on open steel shelf. R. 205. (20)

9. JUDGMENT INDEX, May 1, 1912 - Nov. 1, 1926. Index to judgments rendered by the court. Entered alphabetically. (Occasionally, official.) 12 x 18 vol., 2 in., on open steel shelf. R. 205. (2)

10. INDEX TO PLAINTIFFS, Jan. 1, 1912 to date. Showing plaintiffs in cases. Entered alphabetically. (Occasionally, official.) 12 x 16 vol., 5 in., on open steel shelf. R. 205. (19)

11. INDEX TO DEFENDANTS, Jan. 1, 1912 to date. Giving defendant's name, date, and location of case record. Indexed. (Occasionally, official.) 12 x 16 vol., 5 in., on open steel shelf. R. 205. (18)

(Civil)

12. CIVIL DOCKET, Jan. 30, 1912 to date. Showing title and number of case, plaintiff, defendant, lawyers, plaintiff's and defendant's accounts, abstract of cost, dates, filings, proceedings, and clerk's fees and emolument returns. Indexed. (Occasionally, official.) 16 x 18 vol., 3 in., on open steel shelf. R. 205. (12)

(Equity)

13. EQUITY DOCKETS, Apr. 9, 1924 to date. Showing title of case, plaintiff's account, proceedings, costs, and clerk's fees. Entered chronologically. (Occasionally, official.) 12 x 18 vol. and 9 x 12 loose-leaf books (3), 1 ft. 9 in., on open steel shelves. R. 205. (15)

14. EQUITY CASES, Jan. 1, 1912 to date. Records of closed and pending cases. Filed numerically. (Older records, seldom; current records, occasionally, official.) 9 x 15 folders, 24 ft., in 12 drawers of steel filing cases. Rs. 205, 207, and 305. (23, 26, 32)

(Bankruptcy)

15. BANKRUPTCY DOCKETS, Jan. 10, 1912 to date. Showing title of case, attorneys, referee, trustee, date, cash received and disbursed, proceedings, and name of bankrupt. Indexed. (Occasionally, official.) 12 x 18 loose-leaf book and 12 x 18 vols. (4), 2 ft. 2 in., on open steel shelves. R. 205. (10)
16. BANKRUPTCY CASES, CLOSED, May 4, 1912 - Jan. 2, 1927. Clerk's records. Filed alphabetically and numerically. (Occasionally, official.) 10 x 15 folders, 72 ft., in 36 drawers of steel filing cases. Torn. R. 305. (33)
17. REFEREE'S BANKRUPTCY CASES, CLOSED, Jan. 5, 1927 to date. Filed numerically. (Seldom, official.) 9 x 15 folders, 52 ft., in 26 drawers of steel filing cases. R. 307. (30)
18. BANKRUPTCY CASES, CLOSED, Jan. 1, 1923 to date. Records of closed cases. Filed numerically. (Seldom, official.) 9 x 15 folders, 8 ft., in 4 drawers of steel filing case. R. 207. (28)
19. BANKRUPTCY INDEX, Jan. 10, 1912 to date. Index to all bankruptcy cases, giving names, record page, and dates. Indexed. (Occasionally, official.) 12 x 16 vol., 5 in., on open steel shelf. R. 205. (17)
20. BANKRUPTCY INDEX, Jan. 10, 1910 to date. Complete index from establishment of court to date, showing number of case, date of filing, and date of discharge. Entered alphabetically. Indexed. (Frequently, official.) 12 x 18 vol., 5 in., on open steel shelf. R. 205. (11)
- (Criminal)
21. CRIMINAL DOCKETS, Apr. 4, 1912 to date. Showing defendant, title of case, proceedings, cost, clerk's fees, and date of case. Indexed. (Occasionally, official.) 12 x 18 vols. (4) and 9 x 12 loose-leaf books (3), 1 ft. 9 in., on open steel shelves. R. 205. (13)
22. CRIMINAL CASES, Jan. 1, 1912 to date. Records of closed and pending cases. Filed numerically. (Older records, seldom; current records, occasionally, official.) 9 x 15 folders, 26 ft., in 13 drawers of steel filing cases. Rs. 205, 207, and 305. (25, 29, 31)
23. PENITENTIARY COMMITMENT RECORD, May 1, 1922 - May 1, 1924. Form showing date, name and number of criminal, charge, length of term, by whom sentenced, and by whom committed to the penitentiary. Entered numerically. (Seldom, official.) 12 x 18 vol., 5 in., on open steel shelf. R. 205. (9)
24. JAIL COMMITMENT RECORD, May 1, 1922 - May 1, 1924. Form giving name and number of criminal, by whom sentenced, and by whom committed to prison. Entered numerically. (Occasionally, official.) 12 x 18 vol., 5 in., on open steel shelf. Dirty. R. 205. (8)

25. REGISTER OF PRISONERS CONFINED IN THE CRAIGHEAD COUNTY JAIL, Jan. 1, 1921 - Dec. 30, 1924. Showing name of prisoner, history in brief, date of imprisonment, charge, by whom accused, and by whom discharged. Indexed. (Seldom, official.) 12 x 18 vol., 4 in., on open steel shelf. R. 205. (7)

(United States Commissioner)

26. MISCELLANEOUS COMMISSIONER'S FILES, Jan. 1, 1925 to date. Commissioner's papers, case files, etc. (Occasionally, official.) 9 x 15 folders, 8 ft., in 4 drawers of steel filing case. R. 205. (22)

(Naturalization)

27. NATURALIZATION PETITION AND RECORD, July 16, 1913 - Mar. 1, 1929. Declaration of intention, affidavits, and petition for naturalization, showing petitioner, witnesses, and official who granted the petition and affixed the seal. (Seldom, official.) 12 x 16 vols. (2), 10 in., on open steel shelves. R. 205. (16)

(Fiscal Accounts)

28. CASH BOOKS, Jan. 27, 1912 - Sept. 19, 1930. Record of cash receipts and disbursements. Entered chronologically. (Seldom, official.) 15 x 18 vols. (3), 6 in., on open steel shelf. R. 205. (4)

29. FEES AND EXPENSES RECEIVED FROM U. S. MARSHAL, Jan. 12, 1912 - Dec. 30, 1920. Record showing fees and expenses deposited by clerk, date, title of case, docket number, amount, number of clerk's receipts, and deposits. Indexed. (Seldom, official.) 12 x 16 vol., 1 in., on open steel shelf. R. 205. (6)

(Miscellaneous)

30. MISCELLANEOUS FILES, Jan. 1912 - Nov. 16, 1930. Bankruptcy papers, statistical earnings, commissioner's papers, correspondence, criminal, equity, and closed law files, jury certificates, referee's reports to clerk, etc. Filed numerically and alphabetically. (Seldom, official.) Various sized envelopes, folders, and bundles, 127 ft. 6 in., on steel shelves and in pasteboard boxes. Damaged by rodents, vermin, faulty containers, and careless handling, dirty, ink faded. R. 305. (35, 36)

31. BANK PASSBOOKS IN CLOSED BANKRUPTCY CASES, COPIES OF DEPOSITIONS, SCHEDULES OF CASES, CORRESPONDENCE, AND ADDRESSOGRAPH STENCILS, Jan. 1, 1912 to date. Filed numerically. (Frequently, official.) Various sized loose sheets, 3 ft. 6 in., in steel and pasteboard boxes. R. 3. (12)

32. PERSONNEL RECORD, Jan. 1, 1912 to date. Showing appointments to office and to other duties necessary to law enforcement. (Occasionally, official.) 12 x 18 vols. (3) and 9 x 12 loose-leaf books (2), 1 ft. 3 in., on open steel shelf. R. 205. (14)

(Correspondence)

33. MISCELLANEOUS CORRESPONDENCE, Jan. 1, 1926 to date. Filed alphabetically. (Occasionally, official.) 9 x 15 folders, 16 ft., in 8 drawers of steel filing cases. R. 205. (24)

Referee in Bankruptcy
Gregg Bldg., Main and Jackson Sts.

34. BANKRUPTCY CASES, Nov. 14, 1932 to date. Records of proceedings before the referee in bankruptcy. Filed numerically. (Daily, official.) 4 1/2 x 8 folded papers and 9 x 15 binders, 23 ft., in 91 boxes in steel filing cabinet and in steel safe. R. 3. (37, 38)

35. RECORD OF CASES FILED, Jan. 1, 1917 - Dec. 31, 1928. Condensed card record of bankruptcy cases. Filed numerically. (Frequently, official.) Loose cards, 1 ft. 3 in., in box in steel safe. R. 3. (39)

36. DISCHARGE RECORDS, INSURANCE POLICIES OF BANKRUPT STOCKS, INDIVIDUAL BANKRUPT PASSPORTS, INDIVIDUAL DUPLICATE DEPOSIT BOOKS, AND UTILITY BILLS AND RECEIPTS, Jan. 1, 1917 - Dec. 31, 1928. Filed numerically. (Frequently, official.) Various sized folders, vols., and loose sheets, 6 ft. 3 in., in steel and pasteboard boxes in steel safe. R. 3. (39)

37. BANKRUPTCY RECORDS, Apr. 9, 1917 - Oct. 16, 1928. Clerk's dockets, record of discharges, referee's expense accounts, transfer record books, quarterly statements, court orders and findings of referee, record of dividends, receipts and disbursements, and check book stubs. Indexed. (Frequently, official.) 9 x 15 vols., loose-leaf books (12), and check books (3), 3 ft., in steel safe. R. 3. (40)

38. BANKRUPTCY DEPOSIT BOOK, SHORTHAND NOTEBOOKS OF DEPOSITIONS, AND RECORD OF EXPENSES, Jan. 9, 1912 to date. Also official forms and copies of reports to the Attorney General. Entered and filed chronologically. (Seldom, official.) Various sized books, etc., 20 ft. 3 in., in 81 drawers of steel filing cases. R. 3. (41)

United States Commissioner
Jonesboro Bldg. and Loan Bldg.
Union and Washington Sts.

39. COMMISSIONERS' DOCKET, Jan. 1, 1926 to date. Complete record of criminal cases. Indexed. (Seldom, official.) 10 x 15 vol., 6 in., in steel filing case. NE. record room, 2d floor. (88)

EASTERN DISTRICT - WESTERN DIVISION

LITTLE ROCK

Clerk
U. S. Post Office and Courthouse
600 Block, W. Fifth St.

No information is available as to the seat of the Federal court prior to 1881. It was located in the U. S. Post Office and Courthouse, Second and Center Streets, in December 1881. When this building was remodeled in 1897-98 the court occupied temporary quarters in the Benjamin Block (now Fulk Building). On January 1, 1933 the court was removed from the old Post Office Building to the fourth floor of the new U. S. Post Office and Courthouse.

The records of the court from 1865 to date are intact. Those of the period from 1836 to 1865 were lost, but some of them were later found under the platform of the hall of the House of Representatives in the old State House and are preserved in an iron safe in the office of the clerk.

The clerk of court at Little Rock keeps the court records for all four divisions of the Eastern District with the exception of a few held by the deputy clerks at Batesville and Jonesboro.

Old Circuit Court Records

40. LAW DOCKET, Sept. 28, 1865 - Mar. 15, 1892. Record of cases. Entered chronologically. (Rarely, official.) 13 x 18 vol., 3 in., on wooden shelf. Damaged by vermin. R. 5. (26)

41. RECORD BOOKS, CIRCUIT COURT, Apr. 10, 1854 - May 4, 1861; Nov. 21, 1864 - Jan. 17, 1913. Book D, Apr. 10, 1854 - May 4, 1861 and Nov. 21, 1864 - Apr. 11, 1867; record B, chancery court, Apr. 1859 - May 4, 1861; volumes E-F, Apr. 12, 1867 - Jan. 17, 1913; two-volume defendants index; and vol. C, labeled "Plaintiff's Index." (Frequently, official.) Various sized vols., 6 ft., on shelves of filing cabinet. R. 407. (28)

District Court Records

(General)

42. MINUTE BOOKS, Jan. 14, 1869 - Sept. 10, 1921. Record of court proceedings. Entered chronologically. (Frequently, official.) Various sized vols. (14), 2 ft., on open metal shelves of filing cabinet. R. 407. (28)

43. LAW MINUTE BOOK "C", HELENA, July 1, 1926 to date. Record of court proceedings. Entered chronologically. (Frequently, official.) 10 x 15 loose-leaf book, 3 in., on open shelf of steel filing cabinet. R. 401. (1428)

44. LAW MINUTE BOOK "E", BATESVILLE, May 22, 1933 to date. Record of court proceedings. Entered chronologically. (Frequently, official.) 10 x 15 loose-leaf book, 3 in., on open metal shelf of steel filing cabinet. R. 401. (1423)

45. CIVIL DOCKETS AND LAW RECORDS, Oct. 1925 to date. Records of court proceedings. Entered chronologically. (Frequently, official.) Various sized loose-leaf books (10), 19 ft. 8 in., on open metal shelves. Rs. 401-405. (29)
46. LAW AND EQUITY DOCKET, HELENA, Feb. 18, 1931 to date. Record of cases. Entered chronologically. (Frequently, official.) 10 x 15 loose-leaf book, 3 in., on open metal shelf of steel filing cabinet. R. 401. (1429)
47. RECORD BOOKS, CIRCUIT AND DISTRICT COURTS, Dec. 18, 1875 - Oct. 17, 1925. Vols. C-Q, chancery records, Dec. 18, 1875 - Oct. 16, 1925, and law records, vols. S-W, Oct. 1, 1903 - Oct. 17, 1925. (Frequently, official.) Various sized vols., 3 ft. 10 in., on shelves of metal filing cabinet. R. 407. (28)
48. RECORD OF COURT ORDERS, 1865 - 1924. Containing decrees, judgments, and orders of court, signed by the judge. Entered chronologically. (Rarely, official.) Various sized vols. (19), 4 ft. 9 in., on wooden shelves. Damaged by vermin. R. 5. (26)
49. CRIMINAL AND BANKRUPTCY CASES, BATESVILLE, Oct. 20, 1924 to date. Filed chronologically. (Frequently, official.) 10 x 12 folders, 16 ft., in 2 steel filing cases. R. 401. (35)
50. CASE FILES, HELENA, Mar. 29, 1919 to date. Records of law, criminal, bankruptcy, and equity cases. (Frequently, official.) 10 x 12 folders, 24 ft., in 8 drawers of 3 steel filing cases. R. 401. (34)
51. LAW CASES, Feb. 2, 1866 to date. Original pleadings in suits. Filed numerically. (Seldom, official.) 8 1/2 x 11 folders and bundles, 116 ft., in 58 drawers of steel filing cases. Rs. 5, 401, and 521. (22, 14, 18)
52. LAW CASES, PENDING, May 26, 1930 to date. Original pleadings in pending suits. Filed numerically. (Frequently, official.) 8 1/2 x 11 folders, 4 ft., in steel filing cases. R. 401. (17)
53. INDEX TO DEFENDANTS, Oct. 1925 to date. Covering docketed cases. Entered alphabetically. (Frequently, official.) Various sized vols. (4), 4 in., on open metal shelves. R. 401. (29)

(Civil)

54. CIVIL DOCKETS, BATESVILLE, Feb. 1908 to date. Record of civil cases. Entered chronologically. (Frequently, official.) 10 x 15 vols. (2), 6 in., on open metal shelf of steel filing cabinet. R. 401. (1425)

(Equity)

55. EQUITY MINUTE BOOKS, Jan. 2, 1935 to date. Record of court

proceedings. Entered chronologically. (Frequently, official.) Various sized loose-leaf books (2), 6 in., on roller metal shelves. R. 401. (30)

56. EQUITY MINUTE BOOK, HELENA, July 6, 1926 to date. Record of court proceedings in equity cases. Entered chronologically. (Frequently, official.) 10 x 15 loose-leaf book, 3 in., on open metal shelf of steel filing cabinet. R. 401. (1427)

57. EQUITY DOCKETS, Jan. 2, 1935 to date. Record of cases. Entered chronologically. (Frequently, official.) Various sized vols. (4), 1 ft. 2 in., on open metal roller shelves. R. 401. (30)

58. EQUITY DOCKET, BATESVILLE, June 2, 1933 to date. Record of cases. Entered chronologically. (Frequently, official.) 10 x 15 loose-leaf book, 3 in., on open metal shelf of steel filing cabinet. R. 401. (1422)

59. EQUITY CASES, CLOSED, May 10, 1865 - May 19, 1915; Aug. 31, 1917 to date. Original pleadings in cases. Filed numerically. (Older records, seldom; current records, frequently, official.) Various sized folders and bundles, 112 ft., in 56 drawers of steel filing cases. Rs. 5, 401, and 521. (19, 15, 20)

60. EQUITY CASES, PENDING, July 21, 1935 to date. Original pleadings in pending cases. Filed numerically. (Daily, official.) 8 1/2 x 11 folders, 10 ft., in 5 drawers of steel cabinet. R. 401. (36)

61. CHANCERY INDEX, n. d. (Frequently, official.) Vol., 2 in., on shelf of metal filing cabinet. R. 407. (28)

(Bankruptcy)

62. BANKRUPTCY MINUTES, July 1, 1867 - Jan. 10, 1898. Record of court proceedings. Entered chronologically. (Seldom, official.) 13 x 18 vol., 3 in., on wooden shelf. Damaged by vermin. R. 5. (26)

63. BANKRUPTCY DOCKETS, July 1867 - Dec. 9, 1868. Record of cases filed. Entered chronologically. (Seldom, official.) 13 x 18 vols. (2), 3 in., on wooden shelf. Damaged by vermin. R. 5. (26)

64. BANKRUPTCY DOCKETS, Aug. 2, 1898 to date. Record of cases filed. Entered chronologically. (Frequently, official.) Various sized vols., 44 ft., on 20 open steel roller shelves. R. 401. (33)

65. BANKRUPTCY DOCKET, BATESVILLE, Aug. 13, 1909 to date. Record of cases filed in bankruptcy. Entered chronologically. (Frequently, official.) 10 x 15 vol., 3 in., on shelf of steel filing cabinet. R. 401. (1426)

66. BANKRUPTCY DOCKET NO. 3, HELENA, Feb. 10, 1926 to date. Record of cases filed in bankruptcy. Entered chronologically. (Frequently,

official.) 10 x 15 vol., 3 in., on shelf of steel filing cabinet. R. 401. (1431)

67. BANKRUPTCY RECORDS, BATESVILLE, Jan. 13, 1899 - June 14, 1933; June 29, 1933 to date. Record of proceedings in bankruptcy cases. Entered chronologically. (Frequently, official.) 10 x 15 vol. and 8 x 12 loose-leaf book, 6 in., on open metal shelves of steel filing cabinet. Rs. 401-405. (1424)

68. BANKRUPTCY RECORD, HELENA, Feb. 10, 1926 to date. Record of proceedings in bankruptcy. Entered chronologically. (Frequently, official.) 10 x 15 loose-leaf book, 3 in., on shelf of steel filing cabinet. R. 401. (1431)

69. BANKRUPTCY CASES, Oct. 5, 1898 - May 1, 1935. Original pleadings in cases. Filed numerically. (Older records, seldom; current records, occasionally, official.) Various sized folders, bundles, and covers, 180 ft., in 90 drawers of steel filing cases. Rs. 5 and 521. (12, 23)

70. REFEREE'S CASES, Jan. 10, 1930 - Dec. 10, 1935. Original pleadings in cases tried by the referee in bankruptcy. Filed numerically. (Seldom, official.) Various sized folders, envelopes, and bundles, 60 ft., in 30 drawers of steel filing cases. R. 521. (16)

(Criminal)

71. CRIMINAL MINUTE BOOK "E", BATESVILLE, May 18, 1933 to date. Record of proceedings in criminal cases. Entered chronologically. (Frequently, official.) 10 x 15 loose-leaf book, 3 in., on open metal shelf of steel filing cabinet. R. 401. (1421)

72. CRIMINAL DOCKET, BATESVILLE, Jan. 6, 1925 to date. Record of cases. Entered chronologically. (Frequently, official.) 10 x 15 vol., 3 in., on open metal shelf of steel filing cabinet. R. 401. (1421)

73. CRIMINAL RECORDS, DOCKETS, AND INDEX, Sept. 12, 1921 to date. Record of proceedings in criminal cases. Entered chronologically. (Frequently, official.) Various sized vols., 80 ft., on 40 steel roller shelves. R. 401. (32)

74. CRIMINAL DOCKET, HELENA, Sept. 5, 1930 to date. Record of cases. Entered chronologically. (Frequently, official.) 10 x 15 loose-leaf book, 3 in., on open metal shelf of steel filing case. R. 401. (1430)

75. CRIMINAL RECORD, HELENA, July 5, 1926 to date. Record of criminal cases. Entered chronologically. (Frequently, official.) 10 x 15 loose-leaf book, 3 in., on open metal shelf of steel filing case. R. 401. (1430)

76. CRIMINAL INDICTMENTS, Apr. 2, 1901 - May 9, 1924. Record of criminal indictments. Entered chronologically. (Rarely, official.)

13 x 18 vols. (2), 6 in., on wooden shelf. Damaged by vermin. R. 5. (26)

77. CRIMINAL CASES, Apr. 9, 1866 - Jan. 6, 1932. Original pleadings in criminal actions. Filed numerically. (Seldom, official.) Various sized folders, 60 ft., in 30 drawers of steel filing cases. R. 521. (27)

(Naturalization)

78. NATURALIZATION PETITIONS AND RECORD, Nov. 12, 1906 to date. (Seldom, official.) Various sized vols. (8), 1 ft. 4 in., on 8 open roller shelves. R. 401. (31)

79. NATURALIZATION PETITIONS AND RECORD, HELENA, May 10, 1909 to date. Entered chronologically. (Frequently, official.) 18 x 18 vol. and loose-leaf books (3), 10 1/2 in., on open metal shelf of steel filing cabinet. R. 401. (1432, 1433)

(Fiscal Accounts)

80. MISCELLANEOUS FISCAL RECORDS, 1895 - 1910. Cash books, day books, fee books, and juror and witness books. 10 x 18 vols., 2 ft., in wooden box. Damaged by faulty containers. R. 5. (21)

(Miscellaneous)

81. EXHIBITS, July 15, 1930 to date. Miscellaneous exhibits filed as evidence in cases. (Occasionally, official.) Various sized folders and envelopes, 12 ft., in 6 drawers of steel filing cases. R. 521. (13)

82. RECORD OF ELECTION SUPERVISORS, Sept. 26, 1876 - Nov. 2, 1878. Entered chronologically. (Rarely, official.) 13 x 18 vol., 3 in., on wooden shelf. Damaged by vermin. R. 5. (26)

(Correspondence)

83. GENERAL CORRESPONDENCE, 1910 - 1925. (Seldom, official.) Filed alphabetically. (Never.) 9 x 12 and 9 x 14 1/2 folders, 46 ft., in 23 steel filing cases. R. 5. (24)

84. GENERAL CORRESPONDENCE, July 1924 to date. With the Dept. of Justice, U. S. courts, and officials of executive departments; also correspondence relative to jury systems, collection and account files and registry files, in Little Rock, Helena, Batesville, and Jonesboro, miscellaneous matters, and general correspondence and remittance letters. See 8 page addenda for subjects of correspondence. Index. (Daily, official.) 10 x 12 folders, 36 ft., in 6 steel filing cases. R. 407. (25)

Probation and Parole Officers
U. S. Post Office and Courthouse
600 Block, W. Capitol Ave.

This office was established on October 8, 1930. It occupied quarters in the Old Post Office Building, 314-318 West Second Street, until January 1, 1933, when it was moved to its present address. There are no useless papers, and no records have been lost or destroyed. Monthly reports on each parolee are sent to Washington, of which no copies are kept in this office.

85. GENERAL FILE, Oct. 1, 1930 to date. Monthly and annual reports, personnel files, general correspondence with Federal institutions and officials of the Dept. of Justice relative to financial and statistical affairs of the office. Filed alphabetically, by classifications. (Frequently, official.) 9 1/2 x 15 folders, 1 ft. 6 in., in drawer of steel filing case. R. 406. (1949)

86. EXPIRATIONS, PAROLES, CONDITIONAL RELEASES, REVOCATIONS, AND TRANSFERS, Oct. 8, 1930 to date. Arranged alphabetically. 5 x 8 card index, 1 ft. 9 in. (Frequently, official.) 9 x 15 folders, 4 ft., in 2 drawers of steel filing case. R. 410. (1956, 2211)

87. PROBATION EXAMINATIONS, Oct. 8, 1930 to date. Closed cases for Jonesboro and Helena. Filed alphabetically. 5 x 8 card index, 2 ft. (Frequently, official.) 9 1/2 x 11 folders, 7 ft., in 4 drawers of filing case. R. 410. (1953, 2208)

88. INVESTIGATIONS OF JUVENILE OFFENDERS, July 1, 1932 to date. Active and closed cases of investigations of juvenile offenders, including report of arrests, personal history, and related correspondence. Arranged alphabetically. 3 x 5 card index, 5 in. (Frequently, official.) 9 1/2 x 15 folders, 1 ft., in drawer of steel filing case. R. 406. (1954, 2209)

89. INVESTIGATION RECORDS FOR INSTITUTIONS, July 1, 1932 to date. Parole plans for Federal institutions preliminary to prisoners' release, showing condition of families of prisoners. Filed alphabetically. (Frequently, official.) 9 x 15 folders, 2 ft., in drawer of steel filing case. R. 406. (1952)

90. PRE-SENTENCE RECORDS, AND MISCELLANEOUS INVESTIGATIONS, July 1, 1932 to date. Records and correspondence; also records of miscellaneous investigations of offenders who have lived in this district made for other probation officers. Filed alphabetically and by divisions. (Frequently, official.) 9 1/2 x 15 folders, 3 ft. 6 in., in 2 drawers of steel filing case. R. 406. (1951)

91. PROBATION CASES, Feb. 15, 1933 to date. Personal history, conditions of probation, court orders, monthly reports from probationers, related correspondence, reports of supervision, and records of parole and conditional release cases. Filed numerically and by divisions.

5 x 8 card index, 1 ft. 9 in. (Daily, official.) 9 1/2 x 15 folders, 4 ft., in 2 drawers of steel filing case. R. 406. (1950, 2210)

92. REVOCATION AND TRANSFER RECORDS, Oct. 8, 1933 to date. Covering probation cases. Filed alphabetically. 5 x 8 card index, 1 ft. (Frequently, official.) 9 1/2 x 15 folders, 1 ft., in drawer of steel filing case. R. 410. (1955, 2212)

HOT SPRINGS

United States Commissioner
Arkansas Trust Bldg., 621 Central Ave.

A United States commissioner has been located in Hot Springs since 1898. The office was first located in the Cohen Building, removing in 1907 to the Gaines Building. In 1915 the office occupied Room 202 of the Post Office Building, where it continued until 1930 when it was located at its present address. This office is within the jurisdiction of the district court, Eastern District, at Little Rock.

93. CRIMINAL DOCKETS, Dec. 1930 to date. Record of criminal cases. Entered chronologically. (Daily, official.) 9 x 15 vols. (8), 1 ft. 6 in., in wooden cabinet. Suite 7, 3d floor. (42)

94. CORRESPONDENCE, Dec. 1930 to date. Correspondence regarding cases with the U. S. attorney and various departments. Filed chronologically and by classification. (Daily, official.) 9 x 12 folders, 10 ft. 6 in., in 8 drawers of 2 steel filing cases. Suite 7, 3d floor. (43)

WESTERN DISTRICT - EL DORADO DIVISION

EL DORADO

Deputy Clerk
U. S. Post Office and Court Bldg.
E. Main St. and Jackson Ave.

Records of closed cases arising in this jurisdiction prior to the inauguration of this court are at Texarkana. Only records of cases active at the time of the creation of the district were transferred to El Dorado.

(General)

95. MINUTES, Feb. 17, 1925 to date. Record of proceedings of the court. Entered chronologically. (Frequently, official.) 8 1/2 x 21 vols. (12), 1 ft. 9 in., in steel filing case in vault. R. 205. (222)
96. LAW DOCKETS, Mar. 3, 1925 to date. Record of findings and proceedings in cases, showing parties, attorneys, costs, cash received and disbursed, etc. Indexed; index vols. (2). (Frequently, official.) 14 x 16 vols. (2), 7 in., on steel shelf in vault. R. 205. (200)
97. LAW CASES, May 3, 1925 to date. Records of law suits. Filed numerically. Index vols. (2). (Frequently, official.) 9 x 14 folders, 14 ft. 2 in., in 2 steel filing cases. R. 205. (199)
98. CRIMINAL AND EQUITY INDEX, Mar. 16, 1925 to date. Index to equity records, equity dockets, criminal dockets, and criminal records. Entered alphabetically. (Frequently, official.) 14 x 17 vols. (2), 2 in., in drawer of steel filing case. R. 203. (224)

(Equity)

99. EQUITY MINUTE BOOK, June 22, 1925 to date. Record of court proceedings in cases. Entered chronologically. Index vols. (2). (Frequently, official.) 10 x 16 loose-leaf book, 2 in., on steel shelf in vault. R. 205. (198)
100. EQUITY DOCKETS, Mar. 16, 1935 to date. Record of findings and court proceedings in cases. Entered chronologically. Indexed; index vols. (2). (Frequently, official.) 14 x 17 vols. (2), 4 in., on steel shelf in vault. R. 205. (197)
101. EQUITY CASES, Mar. 16, 1925 to date. Records of cases. Filed numerically. Index vols. (2). (Frequently, official.) 9 x 14 folders, 11 ft. 8 in., in 2 steel filing cases. R. 205. (196)

(Bankruptcy)

102. BANKRUPTCY DOCKET, Feb. 28, 1925 to date. Record of pleadings and findings in bankruptcy cases. Entered chronologically. Indexed; index vol. (Frequently, official.) 12 x 17 vol., 3 in., on steel shelf in vault. R. 205. (203)
103. BANKRUPTCY CASES, Feb. 28, 1925 to date. Records of cases. Filed numerically. Index vol. (Frequently, official.) 3 x 10 covers, 43 ft. 8 in., in 2 filing cases. R. 203. (204)
104. BANKRUPTCY INDEX, Feb. 28, 1925 to date. Index to bankruptcy cases. Entered alphabetically. (Frequently, official.) 14 x 17 vol., 1 in., in vault. R. 205. (223)
105. CREDITORS' CLAIMS, Feb. 28, 1925 to date. Claims filed by

creditors in bankruptcy cases. Index vol. (Frequently, official.) 12 x 14 folders, 8 ft. 4 in., in filing case. R. 205. (206)

106. TRUSTEES' CHECKS, Feb. 28, 1925 to date. Cancelled checks of trustees in payment of claims in bankruptcy. Filed chronologically. (Frequently, official.) 3 x 10 bundles, 6 ft. 8 in., in steel filing case. R. 205. (205)

(Special Civil Matters)

107. NOTICE OF TAX LIENS, Mar. 18, 1926 to date. Notice of taxes due the U. S. Filed chronologically. (Rarely, official.) 3 x 9 covers, 3 in., in filing case. R. 203. (218)

(Criminal)

108. CRIMINAL DOCKETS, May 23, 1925 to date. Record of findings and proceedings in cases. Indexed; index vols. (2). (Frequently, official.) 12 x 17 vols. (2), 6 in., on steel shelf in vault. R. 205. (201)

109. CRIMINAL CASES, May 23, 1925 to date. Records of criminal cases. Filed numerically. Index vols. (2). (Frequently, official.) 3 x 10 covers, 8 ft., in steel filing case. R. 203. (202)

(United States Commissioner)

110. U. S. COMMISSIONER'S CASES, June 3, 1925 to date. Records of proceedings before U. S. commissioner. Filed alphabetically. Index. (Frequently, official.) 3 x 9 covers, 4 ft. 10 in., in filing case. R. 203. (211)

111. COMMISSIONER'S JURY LISTS, June 22, 1925 - Oct. 21, 1935. Showing jurors selected to hear cases in courts. Filed chronologically. (Frequently, official.) 3 x 9 covers, 1 ft., in filing case. R. 203. (216)

(Naturalization)

112. NATURALIZATION PAPERS, Feb. 1, 1926 - May 25, 1929. Form 2203, certificate of naturalization, declaration of intention, and certificate of arrival; form discontinued in 1929. Entered alphabetically. Indexed. (Frequently, official.) 11 x 18 vol., 1 in., in steel filing case. R. 205. (207)

113. COURT ACTIONS ON NATURALIZATION PETITIONS, Oct. 21, 1929 - Apr. 15, 1935. Form 2351, decree of court that petition be granted; Form 2352, order of court that petition be accepted; and Form 2353, court order that petition be continued. Entered chronologically. (Frequently, official.) 8 x 12 loose-leaf book, 1/2 in., in filing case. R. 205. (210)

114. PETITIONS FOR CITIZENSHIP, Oct. 21, 1929 - Apr. 16, 1935. Form 2204-LA, petition of alien for U. S. citizenship, listing petitioner, place of birth, race, color, nationality, present address, etc. Entered alphabetically. Indexed. (Rarely, official.) 8 x 11 loose-leaf book, 1 in., in filing case. R. 205. (209)

115. DECLARATIONS OF INTENTION, Apr. 18, 1933 to date. Form 22-LA, alien's formal declaration of intention to become a citizen of the U. S., giving race, color, nationality, etc. Entered alphabetically. (Frequently, official.) 8 x 12 loose-leaf book, 1/2 in., in filing case. R. 205. (208)

(Fiscal Accounts)

116. CLERK'S CASH BOOK, Feb. 28, 1925 to date. Daily record of cash received and disbursed by clerk. Entered chronologically. (Frequently, official.) 14 x 16 vols. (2), 3 in., on open steel shelves in vault. R. 205. (212)

117. TRUST FUND DISBURSEMENT VOUCHERS, Sept. 30, 1935 to date. Form DC-55A. Entered chronologically. (Frequently, official.) 9 1/2 x 11 1/2 loose-leaf book, 1/2 in., in filing case. R. 205. (213)

(Miscellaneous)

118. BONDING COMPANIES, Oct. 24, 1925 - Oct. 14, 1935. Record of court action on powers of attorney given by bonding companies to agents and revocations of same. Filed chronologically. (Rarely, official.) 3 x 9 covers, 6 in., in filing case. R. 203. (214)

119. VENIRE FACIAS RETURNS, June 3, 1925 to date. Summons by marshal for jurors to appear in court. Filed chronologically. (Frequently, official.) 3 x 9 covers, 3 ft. 4 in., in filing case. R. 203. (215)

120. GRAND JURY SUBPOENAS, June 14, 1926 to date. Subpoenas for grand jury witnesses. Filed chronologically. (Frequently, official.) 3 x 9 covers, 3 in., in filing case. R. 203. (220)

121. PRAECIPES FOR WITNESSES, Jan. 13, 1936 to date. Summons for witnesses to appear before grand jury. Filed chronologically. (Rarely, official.) 3 x 9 covers, 3 in., in filing case. R. 203. (217)

122. MISCELLANEOUS MATTER, July 11, 1927 to date. Orders and directions to deputy clerk as to findings and proceedings in cases. Filed chronologically. (Frequently, official.) 3 x 9 covers, 4 in., in filing case. R. 203. (219)

(Correspondence)

123. GENERAL CORRESPONDENCE, Feb. 17, 1925 to date. Miscellaneous

letters received by the deputy clerk. Filed alphabetically. (Frequently, official.) 9 x 12 folders, 2 ft. 1 in., in filing case. R. 203. (221)

WESTERN DISTRICT - FORT SMITH DIVISION

FORT SMITH

Clerk

Federal Bldg., S. 6th St. and Rogers Ave.

Old Circuit Court Records

124. MINUTE BOOKS, May 1891 - Dec. 1904. Record of court proceedings in all types of cases. Entered chronologically. (Never.) 9 x 12 vols. (5), 10 in., in pasteboard box. File room, 2d floor. (36)

125. MINUTE BOOKS, Jan. 1905 - 1912. Index. (Older records, occasionally; later records, daily, official.) 9 x 14 and 10 x 14 vols. (3) and loose-leaf book, 1 ft. 1 in., on metal roller and open wooden shelves. Damaged by careless handling, dirty. Vault off R. 304. (1)

126. DOCKETS, Jan. 1900 - May 1902. Record of pleadings in all types of cases. Entered chronologically. Index in clerk's office. (Never.) 9 x 12 vols. (2), 4 in., in pasteboard box. File room, 2d floor. (36)

127. CIVIL AND CRIMINAL BENCH DOCKETS, May 1892 - Jan. 1898. Record of cases filed. Entered numerically. (Rarely, official.) 10 x 14 vols. (2), 2 2/3 in., on floor. File room, 2d floor. (38)

128. JUDGMENT DOCKET, 1901 - 1911. Index. (Occasionally, official.) 13 x 18 vol., 3 1/2 in., on shelf. Damaged by careless handling, dirty. Vault off R. 304. (1)

129. LAW RECORD, May 6, 1889 - Dec. 28, 1911. Index. (Occasionally, official.) 12 x 18 vols. (7), 2 ft., on shelves. Damaged by careless handling, dirty. Vault off R. 304. (1)

130. CIVIL WITNESS CLAIM RECORD, Feb. 6, 1907. Entered numerically. (Rarely, official.) 10 x 14 vol., 1 1/3 in., on floor. File room, 2d floor. (38)

131. BENCH EQUITY DOCKET, June 1899 - June 1911. Record of equity cases filed for the above mentioned terms of court. Entered numerically. (Rarely, official.) 13 x 18 vol., 1 1/3 in., on floor. File room, 2d floor. (38)

132. EQUITY CASES, Nov. 14, 1902 - June 9, 1910. Complaints, depositions, and evidence. Filed numerically. Index in R. 304. (Occasionally, official.) 8 1/2 x 13 1/2 loose sheets, 10 in., in drawer of metal filing case. R. 307. (20)

133. CHANCERY ORDERS, 1867 - 1908. (Occasionally, official.) 13 x 18 vol., 3 in., on shelf. Damaged by careless handling, dirty. Vault off R. 304. (1)

134. CASH BOOK, 1907 - 1911. Index. (Occasionally, official.) 13 x 18 vol., 3 1/2 in., on metal roller or open wooden shelf. Damaged by careless handling, dirty. Vault off R. 304. (1)

District Court Records

(General)

135. MINUTE BOOKS, May 12, 1873 - June 18, 1809. Record of court proceedings in all types of cases. Entered chronologically. Index in clerk's office. (Never.) Various sized vols. (12), 2 ft., in pasteboard box. File room, 2d floor. (36)

136. MINUTE BOOKS, 1909 to date. Index. (Older records, occasionally; later records, daily, official.) 9 x 14 and 10 x 14 vols. (28), 12 ft. 8 in., on shelves. Damaged by careless handling, dirty. Vault off R. 304. (1)

137. DUPLICATE MINUTE BOOKS, EL DORADO, HARRISON, AND TEXARKANA, Jan. 1, 1913 - Dec. 1935. Showing court proceedings. Entered chronologically. (Occasionally, official.) 8 1/2 x 14 loose-leaf books (51), 8 ft. 6 in., in 12 compartments of closed wooden cabinet. R. 307. (18)

138. MINUTE BOOKS, Jan. 1, 1936 to date. Showing court proceedings. Entered chronologically. (Daily, official.) 10 x 15 loose-leaf books (4), 3 1/2 in., on metal filing case. R. 307. (19)

139. DOCKETS, May 1889 - Feb. 1897; Jan. 1900. Record of pleadings in all types of cases. Entered chronologically. Index in clerk's office. (Never.) 9 x 12 vols. (15), 2 ft. 6 in., in pasteboard box. File room, 2d floor. (36)

140. DOCKETS, HARRISON, EL DORADO, AND TEXARKANA, May 16, 1930 to date. Covering criminal, equity, and bankruptcy cases. Entered chronologically. 10 x 10 loose-leaf index book, 3 in. (Occasionally, official.) 10 x 11 1/2 loose-leaf books (4), 1 ft. 6 in., on metal filing cabinet. R. 307. (16)

141. DOCKETS, HARRISON, EL DORADO, AND TEXARKANA, May 7, 1931 to date. Record of pending cases. Entered chronologically. Index. (Daily, official.) 10 x 11 1/2 loose-leaf books (4), 1 ft., on metal roller shelf. R. 307. (17)

142. LAW BENCH DOCKETS, Jan. 1889 - June 1910. Record of law cases. Entered numerically. (Rarely, official.) 13 x 18 vols. (2), 2 2/3 in., on floor. File room, 2d floor. (38)
143. LAW DOCKETS, 1907 - May 14, 1936. Index. (Older records, occasionally; later records, daily, official.) 15 x 16 vols. (5), 1 ft. 5 in., on shelves. Damaged by careless handling, dirty. Vault off R. 304. (1)
144. LAW AND EQUITY DOCKETS, EL DORADO, Apr. 17, 1925 - Dec. 10, 1930. Indexed. (Daily, official.) 15 x 16 vols. (3), 10 1/2 in., on metal roller shelf and in partition of closed wooden cabinets. R. 307. (14)
145. LAW AND EQUITY DOCKETS, TEXARKANA AND HARRISON, Aug. 14, 1912 - Dec. 29, 1930. Indexed. (Daily, official.) 15 x 16 vols. (7), 2 ft., on metal roller shelves and in partition of closed wooden cabinets. R. 307. (14)
146. LAW RECORD, Dec. 3, 1855 - Nov. 1860; Aug. 31, 1865 to date. Index. (Older records, occasionally; later records, daily, official.) 13 x 18 vols. (59), 19 ft. 8 in., on metal roller and open wooden shelves. Damaged by careless handling, dirty. Vault off R. 304. (1)
147. CIVIL AND CRIMINAL BENCH DOCKETS, Dec. 1896 - Dec. 1898. Record of civil and criminal cases. Entered numerically. (Rarely, official.) 13 x 18 vols. (6), 8 in., on floor. File room, 2d floor. (38)
148. BENCH DOCKET, Feb. 5, 1929 - Mar. 14, 1933. Record of cases filed, made for the convenience of the judge. (Occasionally, official.) 9 x 15 vol., 4 1/2 in., on metal roller shelf of wooden case. Bindings broken. R. 304. (3)
149. WRIT DOCKET, 1866 - 1890. Record of writs issued by the court. Indexed. (Rarely, official.) 10 x 15 vol., 4 1/2 in., on metal roller shelf of wooden case. Binding broken. R. 304. (3)
150. WRIT DOCKETS, 1896 - 1900. Record of issuance of writs and returns of same. Indexed. (Seldom, official.) 12 x 18 vols. (3), 5 in., on cabinet. File room, 2d floor. (44)
151. WRIT DOCKET, June 1907 - Sept. 1910. Index. (Occasionally, official.) 13 x 18 vol., 3 1/2 in., on shelf. Damaged by careless handling, dirty. Vault adjoining R. 304. (1)
152. JUDGMENT DOCKET, Dec. 26, 1924 to date. Record of judgments in cases. Indexed. (Frequently, official.) 13 x 17 vol., 4 1/2 in., on metal roller shelf of wooden case. Binding broken. R. 304. (3)
153. JUDGMENT DOCKETS, CIRCUIT AND DISTRICT COURTS, 1856 - 1921. One vol., 1893 - 1905, contains district and circuit court records;

other vols. contain only district court records. Index. (Older records, occasionally; later records, daily, official.) 13 x 18 vols. (4), 1 ft. 2 in., on shelves. Damaged by careless handling, dirty. Vault off R. 304. (1)

154. EXECUTION DOCKET, Oct. 27, 1887 - July 28, 1896. Record of execution of judgments against property of defendants. Entered numerically. (Rarely, official.) 13 x 18 vol., 1 1/3 in., on floor. File room, 2d floor. (38)

155. EXECUTION DOCKET, 1908 to date. Record of execution of judgments against property of defendants. (Frequently, official.) 15 x 18 vol., 4 1/2 in., on metal roller shelf of wooden case. Binding broken. R. 304. (3)

156. EXECUTION DOCKETS, Nov. 13, 1865 to date. Index. (Older records, occasionally; later records, daily, official.) 13 x 18 vols. (2), 7 in., on shelves. Damaged by careless handling, dirty. Vault off R. 304. (1)

157. APPEARANCE DOCKETS, 1865 - 1897; 1905 - 1906. Index. (Older records, occasionally; later records, daily, official.) 13 x 18 vols. (2), 7 in., on shelf. Damaged by careless handling, dirty. Vault off R. 304. (1)

158. INITIAL AND FINAL CIVIL DOCKET REPORTS AND PERSONAL FILES, Apr. 2, 1914 - Nov. 10, 1935. Duplicate copies of reports on cases, and personal files containing cancelled checks and bank statements. (Seldom, official.) 4 x 6 cards and cancelled checks, 2 ft. 6 in., in 3 drawers of metal filing cases. R. 305. (8)

159. FINAL RECORD, Jan. 17, 1899 - 1917. Complete record of cases. Index. (Older records, occasionally; later records, daily official.) 9 x 14 and 13 x 18 vols. (14), 4 ft. 1 in., on metal roller and open wooden shelves. Damaged by careless handling, dirty. Vault off R. 304. (1)

160. LAW RECORD, JAIL, Dec. 1, 1906 - Jan. 27, 1909. Record of law cases involving a jail sentence. (Occasionally, official.) 13 x 18 1/2 vol., 4 1/2 in., on metal roller shelf in wooden case. Bindings broken. R. 304. (3)

161. LAW AND EQUITY CASES, 1912 - 1928. Records of proceedings in cases. (Seldom, official.) 4 x 10 bundles, 9 ft. 11 in., in 7 drawers of metal filing cases. R. 306. (12)

162. OPINIONS AND CHARGES, n. d. Copies of charges and opinions on motions for new trials. Index in clerk's office. (Rarely, official.) 9 x 12 bundle, 1 ft. File room, 2d floor. (32)

163. INDEX, May 1873 - June 1909. To clerk's term dockets and minute books. Entered alphabetically. (Seldom, official.) 15 x 18 vols. (2), 1 ft., on desk. R. 304. (237)

164. INDEXES, Feb. 1898 - May 1903. Listing litigants in various types of cases. Entered alphabetically. (Never.) Various sized vols. (14), 10 in., in pasteboard box. File room, 2d floor. (36)

165. INDEX, Jan. 7, 1909 - Dec. 1, 1918. To civil cases, jury lists, petitions, and statements of money. Entered alphabetically. (Occasionally, official.) 15 x 18 vols. (2), 6 in., in vault. R. 304. (233)

166. INDEX, May 16, 1930 to date. To duplicate dockets of closed criminal, law, equity, and bankruptcy cases in the Harrison, El Dorado, and Texarkana divisions. Entered alphabetically. (Occasionally, official.) 10 x 10 loose-leaf book, 3 in., on metal filing case. R. 307. (232)

167. INDEX, May 7, 1931 to date. To duplicate dockets of pending civil and criminal cases. Entered alphabetically. (Daily, official.) 10 x 10 vol., 3 in., on metal filing case. R. 307. (236)

168. INDEXES TO JUDGMENT DOCKETS, n. d. Entered alphabetically. (Daily, official.) 9 x 14 vols. (4), 1 ft. 4 in., on shelves. Damaged by careless handling, dirty. Vault off R. 304. (1)

(Civil)

169. SMALL CIVIL BENCH DOCKETS, May 1876 - Nov. 1877. Record of cases filed, prepared for the convenience of the judge. Entered numerically. (Rarely, official.) 10 x 14 vols. (3), 4 in., on floor. File room, 2d floor. (38)

170. CIVIL CASES AGAINST CONFEDERATE REBELS, Aug. 31, 1865 - Dec. 1, 1869. Records in cases bought to confiscate Confederate rebels' property. Entered chronologically. See addenda for extracts. Indexed. (Rarely, official.) 12 x 16 vol., 3 in., in open wooden compartment. Vault in R. 304. (70)

171. CIVIL CASES, CIRCUIT AND DISTRICT COURTS, Feb. 16, 1877 - June 9, 1884. Records of court proceedings. Arranged chronologically. 14 x 18 index vols. (2), 7 in., in vault off R. 304. (Seldom, official.) 4 x 9 1/2 bundles, 71 ft. 6 in., in pigeonholes of closed wooden filing cabinet. Brittle. R. 304. (4, 1)

172. PAPERS IN CIVIL CASE, n. d. Papers in suit against Lester Vehicle and Implement Co. and J. H. Martin. Index in clerk's office. (Seldom, official.) Various sized loose papers, 1 ft. 4 in., in pasteboard carton. File room, 2d floor. (32)

173. LAW RECORD, June 1906 - Mar. 23, 1910. Records of civil cases. (Occasionally, official.) 13 x 18 vol., 4 1/2 in., on metal roller shelf of wooden case. Bindings broken. R. 304. (3)

174. EXHIBITS IN CIVIL CASES, Oct. 16, 1878 - Sept. 20, 1908.

15 x 18 index vol., 6 in., in R. 304. (Never.) See addenda for further information. Various sized vols. (98), 11 ft., on filing cabinet. Ink faded. File room, 2d floor. (48, 244)

175. INDEX TO CIVIL CASES, CIRCUIT AND DISTRICT COURTS, Feb. 16, 1877 - June 9, 1884. Entered alphabetically. (Seldom, official.) 14 x 17 1/2 vols. (2), 6 in., in vault. R. 304. (230)

176. INDEX, Mar. 7, 1891 - Oct. 20, 1906. To civil cases and miscellaneous reports regarding same. Entered alphabetically. (Seldom, official.) 15 x 18 vols. (2), 6 in., in vault. R. 304. (234)

177. INDEX, Nov. 6, 1878 - June 28, 1920. To miscellaneous civil suit papers, reports of fines paid, and recognizance record. Entered alphabetically. (Seldom, official.) 15 x 18 vols. (2), 1 ft., on desk. R. 304. (239)

(Equity)

178. EQUITY DOCKETS, Apr. 7, 1890 to date. Index. (Older records, occasionally; later records, daily, official.) Various sized vols. (10), 3 ft., on metal roller and open wooden shelves. Damaged by careless handling, dirty. Vault off R. 304. (1)

179. CHANCERY RECORDS, 1867 to date. Index. (Older records, occasionally; later records, daily, official.) 10 x 16 loose-leaf book and 13 x 18 vols. (11), 4 ft. 2 in., on shelves. Damaged by careless handling, dirty. Vault adjoining R. 304. (1)

180. EQUITY CASES, June 28, 1920; n. d. Proceedings in cases and exhibits. Index in clerk's office. (Seldom, official.) Various sized loose sheets, 3 ft. 5 in., in pasteboard carton and wooden box. File room, 2d floor. (32)

181. EQUITY INDEX, Nov. 14, 1902 - June 9, 1910. Index to equity cases, complaints, depositions, and evidence. Entered alphabetically. (Occasionally, official.) 15 x 18 vol., 6 in., in vault. R. 304. (240)

(Bankruptcy)

182. BANKRUPTCY DOCKETS, TEXARKANA AND HARRISON, Jan. 1, 1912 - June 6, 1930. Indexed. (Daily, official.) 15 x 16 vols. (2), 7 in., on metal roller shelf and in partition of closed wooden cabinets. R. 307. (14)

183. BANKRUPTCY DOCKET, EL DORADO, Feb. 28, 1925 - Mar. 15, 1932. Indexed. (Daily, official.) 15 x 16 vol., 3 1/2 in., on metal roller shelf of closed wooden cabinet. R. 307. (14)

184. BANKRUPTCY DOCKETS AND RECORDS, 1867 - 1878; 1898 to date. Index. (Older records, occasionally; later records, daily, official.)

13 x 18 vols. (7), bundle, and loose and folded documents, 3 ft., on shelves, in suit case, and on floor. Damaged by careless handling, dirty. Vault off R. 304. (1)

185. RECOGNIZANCE RECORD, BANKRUPTCY DOCKET, TRUSTEE'S BOND DOCKET, AND BANKRUPTCY STATISTICAL RECORD, Jan. 1915 - Dec. 1916. Index in clerk's office. (Seldom, official.) Various sized loose papers, 1 ft. 9 in., in pasteboard carton. File room, 2d floor. (32)

186. BANKRUPTCY CASES, Aug. 1, 1867 - June 2, 1872. Petition, schedule of property, list of creditors, and other papers relating to case. Filed numerically. (Frequently, official.) 4 x 9 folders, 22 ft. 6 in., in wooden pigeonhole cabinet. File room, 2d floor. (35)

187. BANKRUPTCY CASES, Aug. 18, 1898 to date. Petitions, schedules, reports, etc., in cases before the referee in bankruptcy. Index in R. 304. (Older records, occasionally; recent records, daily, official.) 4 x 9 bundles, 126 ft. 6 in., in 278 drawers of 6 metal filing cases. Brittle. Rs. 304 and 308. (6, 25)

188. RECORD OF BANKRUPTCY PROCEEDINGS, Sept. 19, 1897 - Oct. 26, 1911. Showing court proceedings in cases. (Occasionally, official.) 13 x 18 vols. (3), 1 ft., on metal roller shelf of wooden case. Bindings broken. R. 304. (3)

189. CLERK'S RECORD OF BANKRUPTCY CASES, July 1, 1934 - June 30, 1935. Showing number, nature, and status of each bankruptcy case during fiscal year at El Dorado, Harrison, Texarkana, and Fort Smith. Entered chronologically. (Yearly, official.) 16 x 21 loose sheets, 2 in., on wooden shelf of closed cabinet. R. 308. (27)

190. BILL OF EXCEPTIONS IN BANKRUPTCY CASE, Jan. 11, 1913. (Seldom, official.) 8 1/2 x 13 loose-leaf book, 4 1/2 in., on metal roller shelf of wooden case. Bindings broken. R. 304. (3)

191. CORPORATION RECORDS, Apr. 23, 1880 - Nov. 14, 1910. Minutes of meetings of stockholders, and list of stock issued. Entered chronologically. (Never.) Various sized vols. (6), 4 in., wrapped in heavy paper on filing cabinet. File room, 2d floor. (42)

192. ANNUAL BANKRUPTCY REPORTS, 1919 - 1935. Copies of statistical reports to the Attorney General on bankruptcy proceedings. Filed chronologically. (Occasionally, official.) 10 x 21 loose sheets, 1 ft. 9 in., on shelf of closed wooden cabinet. R. 308. (26)

193. BANKRUPTCY EXHIBITS, June 25, 1902 - Feb. 10, 1904. Records of shareholders meetings. (Rarely, official.) 8 x 13 vols. (2), 9 in., on metal roller shelf of wooden case. Bindings broken. R. 304. (3)

194. BANKRUPTCY EXHIBITS, Aug. 31, 1912 - Apr. 25, 1913. Miscellaneous books and papers in Katzung case. Entered chronologically. Ledgers indexed. (Seldom, official.) Various sized vols. (10) and bundles, 2 ft., in wooden box on table. File room, 2d floor. (68)

195. BANKRUPTCY INDEX, Aug. 18, 1898 - Feb. 2, 1915. To bankruptcy reports and schedules. Entered alphabetically. (Occasionally, official.) 12 1/2 x 18 vol., 6 in., in vault. R. 304. (235)

196. BANKRUPTCY INDEX, Feb. 6, 1915 to date. Index to bankruptcy files. Entered alphabetically. (Daily, official.) 15 x 18 vols. (3), 8 in., in vault. R. 304. (228)

197. BANKRUPTCY INDEX, n. d. Cross index to bankruptcy records. Entered alphabetically. (Frequently, official.) 12 1/2 x 17 vol., 4 1/2 in., on metal roller shelf of wooden case. Bindings broken. R. 304. (3)

(Admiralty)

198. ADMIRALTY RECORD, May 1866 - May 1872. Index. (Older records, occasionally; later records, daily, official.) 13 x 18 vol., 3 1/2 in., on shelf. Damaged by careless handling, dirty. Vault off R. 304. (1)

(Special Civil Matters)

199. CERTIFICATES OF DISCHARGE OF TAX LIENS, INTERNAL REVENUE, 1920 to date. Index. (Older records, occasionally; later records, daily, official.) 8 x 11 loose sheets, 2 in., on clipboard. Damaged by careless handling, dirty. Vault off R. 304. (1)

(Criminal)

200. CRIMINAL DOCKETS, 1901 to date. Index. (Older records, occasionally; recent records, daily, official.) 13 x 18 vols. (8), 2 ft. 8 in., on shelves. Damaged by careless handling, dirty. Vault off R. 304. (1)

201. CRIMINAL DOCKETS, TEXARKANA, July 6, 1920 - May 19, 1930. Indexed. (Daily, official.) 15 x 16 vols. (4), 1 ft. 2 in., on metal roller shelves and in partition of closed wooden cabinets. R. 307. (14)

202. CRIMINAL DOCKET, EL DORADO AND HARRISON, May 23, 1925 - Oct. 10, 1929. Indexed. (Daily, official.) 15 x 16 vol., 3 in., on metal roller shelf of closed wooden cabinet. R. 307. (14)

203. CRIMINAL BENCH DOCKETS, Aug. 1870 - May 1896. Record of criminal cases. Entered numerically. (Rarely, official.) 13 x 18 vols. (13), 1 ft. 5 in., on floor. File room, 2d floor. (38)

204. SMALL CRIMINAL BENCH DOCKETS, Feb. 1878 - May 1879; Aug. 1891 - May 1896. A record of cases prepared for the convenience of the judge. Entered numerically. (Rarely, official.) 10 x 14 vol., 1 1/3 in., on floor. File room, 2d floor. (38)

205. FINAL CRIMINAL RECORD, 1890 - 1895. Showing all important

pleadings and final judgments in cases. (Rarely, official.) 15 x 18 vol., 4 1/2 in., on metal roller shelf in wooden case. Binding broken. R. 304. (3)

206. FINAL CRIMINAL RECORD, June 1913 - Jan. 22, 1918. Showing pleadings and final judgments in criminal cases. (Frequently, official.) 9 x 15 1/2 vol., 4 1/2 in., on metal roller shelf of wooden case. Bindings broken. R. 304. (3)

207. CRIMINAL CASES, Feb. 8, 1890 to date. Indictments, verdicts, assignments of errors, praecipe for subpoenas, petitions for appeal, bail and bond, appearance bonds, writs of error, mittimus, and correspondence. Index. (Frequently, official.) 4 x 9 1/2 folders, 23 ft. 6 in., in 56 drawers of metal filing cases. R. 304. (5)

208. BILLS OF COMPLAINT, June 10, 1906 - Apr. 6, 1916. Showing charges made against parties and disposition of same. (Frequently, official.) 9 x 15 1/2 vol., 4 1/2 in., on metal roller shelf in wooden case. Bindings broken. R. 304. (3)

209. REGISTER OF U. S. PRISONERS, Mar. 29, 1872. List of prisoners confined in the Poteau jail at Fort Smith. (Rarely, official.) 11 x 16 vol., 1 3/5 in., on filing cabinet. File room, 2d floor. (44)

210. INDICTMENTS, WRITS, SUBPOENAS, MOTIONS, AND COMMITMENTS, May 27, 1867 - Nov. 29, 1930. Printed forms. Arranged numerically. 11 x 17 index vol., 3 in. (Seldom, official.) 4 x 9 bundles, 209 ft., in pigeonholes of closed wooden filing cases. Damaged by rodents, dirty, torn, scattered, ink faded. File room, 2d floor. (30, 238)

211. COMMITMENT RECORDS, Aug. 11, 1884 - Feb. 4, 1909. Commitment to jail, 5 vols.; commitment to penitentiary, 4 vols.; and commitment to house of correction, 1 vol. (Occasionally, official.) 13 x 18 vols. (10), 3 ft. 4 in., on shelves. Damaged by careless handling, dirty. Vault off R. 304. (1)

212. TRANSCRIPTS OF TESTIMONY IN CAPITAL CASES, AND CHARGES OF THE COURT, Jan. 9, 1879 - Aug. 4, 1898. Indexed. (Never.) 8 x 12 loose sheets, 9 ft., in pasteboard carton. File room, 2d floor. (34)

213. INDEX TO CRIMINAL CASES, Feb. 8, 1890 to date. Entered alphabetically. (Frequently, official.) 14 x 17 1/2 vols. (2), 6 in., in vault. R. 304. (227)

(United States Commissioner)

214. PROCEEDINGS BEFORE U. S. COMMISSIONER, MISCELLANEOUS PAPERS, AND EMOLUMENT RETURNS, May 3, 1889 - Sept. 1, 1912. Bond for defendant, subpoenas, capias, final mittimus, etc. Filed chronologically. (Occasionally, official.) 4 x 9 folded sheets, 16 ft., in 39 compartments of closed wooden cabinet. Brittle. R. 307. (24)

215. U. S. COMMISSIONER'S PAPERS AND DOCKETS, Mar. 13, 1883 - May 15, 1930. Dockets indexed; also 11 x 16 index vol., 2 in. (Never.) 10 x 16 bundles and vols. (36), 10 ft. 4 in., on floor and on filing cabinet. Scattered. File room, 2d floor. (37, 243)

(Naturalization)

216. NATURALIZATION RECORDS, 1900 - 1929. Court records in naturalization cases. (Occasionally, official.) 12 x 18 vols. (6), 2 ft. 3 in., on metal roller shelf in wooden case. Bindings broken. R. 304. (3)

217. DECLARATIONS OF INTENTION, 1879 - June 1929. Forms filed by aliens declaring their intention of becoming citizens of the U. S. (Older records, seldom; recent records, occasionally, official.) Various sized bundles and vols. (4), 2 ft. 11 in., in drawer of metal filing case and on metal roller shelf in wooden case. Bindings broken. Rs. 306 and 304. (12, 3)

218. NATURALIZATION RECORDS, Oct. 25, 1907 to date. Declaration of intention and final admission or rejection of applicant. Filed and entered chronologically. Vols. indexed. (Frequently, official.) 14 x 17 folders and 9 x 11 loose-leaf books (3), 1 ft. 2 in., on 6 shelves of closed wooden cabinet. R. 308. (28)

(Attorneys)

219. ROLL OF ATTORNEYS, 1856 to date. Index. (Occasionally, official.) 8 1/2 x 14 vol., 3 1/2 in., on shelf. Damaged by careless handling, dirty. Vault off R. 304. (1)

(Fiscal Accounts)

220. CLERK'S BLOTTERS, DISTRICT AND CIRCUIT COURTS, Jan. 1908 - Mar. 3, 1910. Showing fees, pleadings, costs, etc., in cases. (Rarely, official.) 9 1/2 x 13 vols. (2), 9 in., on metal roller shelf in wooden case. Bindings broken. R. 304. (3)

221. CASH BOOKS, 1907 to date. Record of cash received and disbursed by clerk. (Older records, occasionally; recent records, daily, official.) 13 x 18 vols. (4), 1 ft. 2 in., on shelves. Damaged by careless handling, dirty. Vault off R. 304. (1)

222. CASH BOOK, Jan. 1, 1912 - Dec. 31, 1928. Record of fees and other court revenues. (Occasionally, official.) 15 x 16 vols. (6), 2 ft. 3 in., on metal roller shelf in wooden case. Bindings broken. R. 304. (3)

223. DUPLICATE CASH BOOKS, EL DORADO, HARRISON, AND TEXARKANA, Nov. 1, 1923 to date. Showing receipts and disbursements of court. Entered chronologically. (Daily, official.) 15 x 16 vols. (5), 7 1/2 in., on 3 open metal roller shelves and in partition of closed wooden cabinet. R. 307. (13)

224. CASH BOOK, Apr. 1, 1933 to date. Showing receipts and disbursements of court. Entered chronologically. (Frequently, official.) 15 x 16 vol., 1 1/2 in., on open metal roller shelf. R. 307. (22)

225. CIVIL FEE BOOK, Feb. 1, 1873 - July 22, 1876. Record of fees received by clerk. Entered chronologically. (Rarely, official.) 13 x 18 vol., 1 1/3 in., on floor. File room, 2d floor. (38)

226. FEE BOOKS, 1865 - June 1901. Since 1901 the fees are recorded in the regular case dockets. (Occasionally, official.) 13 x 18 vols. (6), 1 ft. 9 in., on shelves. Damaged by careless handling, dirty. Vault off R. 304. (1)

227. PAY FOR JURORS AND WITNESSES, June 24, 1913 to date. Record of discharges of jurors in all four divisions of the district. Entered chronologically. (Seldom, official.) 9 x 14 loose-leaf books (4), 6 in., on shelf of closed wooden compartment. R. 307. (15)

228. REGISTRY FUND LEDGER, June 4, 1921 to date. Clerk's cash and fee book. (Frequently, official.) 13 x 18 vol., 4 1/2 in., on metal roller shelf in wooden case. Binding broken. R. 304. (3)

229. AFFIDAVIT AND ORDER OF APPROVAL OF ACCOUNTS OF U. S. MARSHALS, Jan. 1, 1920 - Jan. 3, 1928. Filed chronologically. (Seldom, official.) 8 1/2 x 14 bundles, 11 ft. 8 in., in 20 compartments of closed wooden filing case. R. 307. (23)

230. VOUCHERS, July 12, 1935 to date. Disbursement vouchers for trust funds for all four divisions of the district. Entered chronologically. (Daily, official.) 10 x 11 1/2 loose-leaf books (2), 3 in., on 2 roller shelves in metal filing cabinet. R. 307. (21)

231. AUDITORS' REPORTS ON U. S. MARSHAL'S ACCOUNTS, Jan. 11, 1858 - Aug. 17, 1878. Reports to clerk. Filed chronologically. (Never.) 8 1/2 x 14 bundles, 3 in., on table. File room, 2d floor. (66)

232. CANCELLED CHECKS, n. d. (Occasionally, official.) Various sized loose sheets, 2 ft., in cardboard box on floor. Damaged by careless handling, dirty. Vault off R. 304. (1)

(Miscellaneous)

233. BAILIFF'S DOCKETS, Feb. 1889 - Jan. 1903. Record of cases and rules. Entered numerically. (Rarely, official.) 8 x 14 vols. (15), 1 ft. 8 in., on floor. File room, 2d floor. (38)

234. JUROR DOCKETS, Jan. 1891 - Dec. 1911. Listing jurors to be summoned. Entered alphabetically. Indexed. (Rarely, official.) 10 x 16 vols. (2), 3 1/5 in., on filing cabinet. File room, 2d floor. (44)

235. SUBPOENA DOCKETS, Jan. 4, 1872 - Dec. 5, 1907. Record of

- subpoenas of witnesses issued. (Rarely, official.) 15 x 20 vols. (7), 11 in., on filing cabinet. File room, 2d floor. (44)
236. GRAND JURY DOCKETS, May 1885 - Jan. 1901. Jury discharge book. Entered chronologically. (Never.) 11 x 16 and 8 1/2 x 14 vols. (29), 1 ft., on floor. Bindings broken. File room, 2d floor. (43)
237. JURY LISTS, PETITIONS, AND STATEMENTS OF MONIES, Jan. 7, 1909 - Dec. 1, 1918. Index vols. (2), in R. 304. (Occasionally, official.) 4 x 9 folders and envelopes, 16 ft., in 36 drawers of metal filing cases. R. 305. (10)
238. GRAND AND PETIT JURORS, Nov. 1876 - Aug. 1888. Lists of grand and petit jurors subpoenaed in cases. (Never.) 12 x 18 vol., 1 3/5 in., on filing cabinet. File room, 2d floor. (44)
239. JURY VENIRE, 1912 - 1928. Notices of summons on jurors for service. (Seldom, official.) 4 x 10 bundles, 1 ft. 5 in., in drawer of metal filing case. R. 306. (12)
240. RECOGNIZANCE OF WITNESSES, Aug. 1884 - Jan. 1909. (Occasionally, official.) 13 x 18 vols. (4), 1 ft., on shelves. Damaged by careless handling, dirty. Vault off R. 304 and file room, 2d floor. (1)
241. MISCELLANEOUS JOURNAL, Jan. 2, 1906 - Jan. 1, 1908. (Rarely, official.) 9 x 14 vol., 3 1/2 in., on shelf. Damaged by careless handling, dirty. Vault off R. 304. (1)
242. BLUEPRINTS, REGISTERED DRAFTS AND CHECKS, BENCH DOCKET SHEETS, ACCOUNTS, EQUITY ORDERS, COMMISSIONER'S PAPERS AND ACCOUNTS, EMOLUMENT RETURNS, QUARTERLY RETURNS, AND BANKRUPTCY ORDERS, June 1, 1907 to date. Files of miscellaneous records. 15 x 18 index vols. (3), 6 in., in vault off R. 304. (Older records, frequently; current records, daily, official.) 10 x 15 envelopes and loose sheets, 69 ft. 2 in., in 50 drawers of metal filing cases. Rs. 305. (9, 229)
243. DISCHARGE OF WITNESSES, Jan. 13, 1873 - June 20, 1910. Record of discharge of witnesses from further service in cases. Entered alphabetically. (Rarely, official.) 12 x 16 vols. (13), 1 ft. 4 in., on floor. File room, 2d floor. (38)
244. WITNESS REGISTERS, Feb. 1889 - Feb. 1903. Clerk's record of witnesses in cases. Entered alphabetically. (Rarely, official.) 8 x 14 vols. (13), 1 ft. 5 in., on floor. File room, 2d floor. (38)
245. MISCELLANEOUS RECORDS, EL DORADO, Jan. 3, 1929 - Dec. 29, 1930. Duplicates of records kept in El Dorado. (Seldom, official.) 10 1/2 x 16 vol., 4 1/2 in., on metal roller shelf in wooden case. Bindings broken. R. 304. (3)

246. PAPERS IN BANKRUPTCY CASES, EXCEPTIONS TO COURT CHARGES, LIST OF CASES REFERRED TO GRAND JURY, AND REPORTS ON FINES PAID, Nov. 1878 - June 1905. Index in clerk's office. (Seldom, official.) Various sized loose papers, 1 ft. 9 in., in pasteboard carton. File room, 2d floor. (32)

247. RECORD OF BONDING COMPANIES, 1922 - 1932. Record of bonding companies authorized to act as surety for bonds. (Occasionally, official.) 10 x 11 vol., 4 1/2 in., on metal roller shelf in wooden case. Binding broken. R. 304. (3)

248. REPORTS TO THE ATTORNEY GENERAL, 1924 - 1933. Copies of clerk's reports to the Attorney General. (Seldom, official.) 4 x 10 bundles, 1 ft. 5 in., in drawer of metal filing case. R. 306. (12)

249. MISCELLANEOUS RECORDS OF CLERK, 1897 to date. Records of fees, disbursements, and registry funds, reports, vouchers, bonds, and correspondence. See addenda. (Daily, official.) Various sized folders, envelopes, and bundles, 26 ft., in 26 drawers of steel filing case in vault. R. 304. (2)

250. PAUPERS' OATHS, n. d. Oaths taken by convicts to avoid additional jail sentences for failure to pay fines. Index in clerk's office. (Rarely, official.) 10 x 12 bundle, 1 ft. File room, 2d floor. (32)

251. REPORTS OF MCCURTAIN MINE RELIEF COMMITTEE, Dec. 29, 1913. Index in clerk's office. (Rarely, official.) 10 x 12 bundle, 1 ft. 1 in. File room, 2d floor. (32)

252. OATHS OF OFFICE, 1888 to date. Oaths of judges, marshals, deputy marshals, commissioners, U. S. attorneys, clerks, and probation officers. (Seldom, official.) 4 x 10 bundles, 1 ft. 5 in., in drawer of metal filing case. R. 306. (12)

253. INDEX, May 18, 1866 to date. To naturalization and miscellaneous records. Entered alphabetically. (Frequently, official.) 14 x 17 vols. (2), 6 in., in vault. R. 304. (231)

254. INDEX, May 1885 - Jan. 1901. To grand jury dockets. Entered chronologically. (Seldom, official.) 11 x 16 vol., 1 in., on desk. File room, 2d floor. (242)

(Correspondence)

255. CORRESPONDENCE, Jan. 1, 1912 to date. With El Dorado, Harrison, Texarkana and Fort Smith divisions. Filed by divisions, excepting the Fort Smith records, which are indexed and filed alphabetically. (Daily, official.) 8 x 10 1/2 folders, 5 ft., in 4 drawers of metal filing case. R. 305. (7)

256. CORRESPONDENCE AND MISCELLANEOUS RECORDS, Jan. 3, 1905 -

Sept. 15, 1935. Letters and extra copies of important cases. Filed alphabetically. (Frequently, official.) 9 x 12 folders, 12 ft. 8 in., in 14 drawers of metal filing cases. R. 306. (11)

257. LETTER FILE, Apr. 20, 1880 - Mar. 3, 1904. Correspondence received by H. B. Armstead, U. S. commissioner and clerk. Indexed. (Never.) 8 x 10 vol. and bundle, 1 in., on filing cabinet. Dirty, torn, ink faded. File room, 2d floor. (41)

258. LETTER FILE, Mar. 2, 1921 - Feb. 23, 1931. Correspondence of judge. Arranged alphabetically and chronologically. (Never.) 8 x 10 and 10 x 14 bundles and loose sheets, 8 ft. 3 in., in drawers and compartments of wooden filing cases. R. 310. (89)

259. CLERK'S CORRESPONDENCE, Mar. 17, 1871 - Sept. 1, 1910. Official correspondence to and from the clerk; also folio of exhibits of Southern Bank & Trust Co. and Lester Vehicle Co. Index vol. (Seldom, official.) Various sized vols. (5) and loose sheets, 1 ft. 3 in., in pasteboard boxes and on filing cabinet. Bindings broken, ink faded. File room, 2d floor. (45, 46, 49)

Probation and Parole Officer
Federal Bldg., S. 6th St. and Rogers Ave.

260. PROBATION AND PAROLE CASES, PENDING, Sept. 1, 1933 to date. Also duplicate records of cases transferred to the Eastern District. Filed numerically. (Daily, official.) 9 x 15 folders, 5 ft. 1 in., in 3 drawers of steel filing cases. R. 212. (79)

261. PAROLE AND PROBATION CASES, ACTIVE, Sept. 14, 1933 to date. Records giving complete history of each case and dates of visits to the probation office. Filed alphabetically. (Daily, official.) 5 x 8 cards, 1 ft. 6 in., in 3 metal post index files. R. 212. (71)

262. PROBATION AND PAROLE CASES, CLOSED, July 24, 1923 to date. Form records of former probationers and parolees, and correspondence with the supervisor of the probation system, the parole executive, etc. Filed numerically. Card index. (Daily, official.) 8 x 10 folders, 6 ft. 1 in., in 8 drawers of 2 metal filing cases. R. 212. (81)

263. RECORD OF PROBATIONERS AND PAROLEES, July 24, 1933 to date. Giving name, age, description, offense, time served, record of progress while under supervision, and date passed from supervision. Filed alphabetically. (Daily, official.) 5 x 8 cards, 2 ft., in 2 drawers of metal card cabinet. R. 212. (80)

264. GENERAL FILES, July 15, 1932 to date. Probation officers' daily travel log, memorandum, statistics, and other data for compiling annual reports; names and addresses of new probation officers, copies of monthly reports, record of juvenile cases, etc. Entered chronologically. (Daily, official.) 9 1/2 x 11 1/2 loose-leaf books (7), 1 ft., on desk. R. 212. (78)

265. FORM LETTERS, Dec. 3, 1931 to date. Correspondence with the Dept. of Justice regarding parolees and probationers. Entered chronologically. (Daily, official.) 10 x 12 loose-leaf book, 1 1/2 in., in drawer of metal filing case. R. 212. (83)

FAYETTEVILLE

United States Commissioner
Drake Bldg., 20 1/2 E. Center St.

This office was established in 1889. It has occupied quarters, successively, in the following buildings: Harrison Hardware Store, east side of the town square; the Wade Building, 14 E. Center Street; the Pearson Building, 37 W. Center Street, from 1930 to 1931; the Thomas Building, 12 E. Center Street, from 1931 to 1933, and the Drake Building since 1933.

266. COMMISSIONER'S DOCKET, Feb. 12, 1933 to date. Transcript of proceedings before the commissioner. Entered chronologically. (Frequently, official.) 9 x 14 vol., 1 1/2 in., in steel fire-proof vault. R. 1, 2d floor. (9)

267. CORRESPONDENCE, Feb. 12, 1933 to date. Letters received from the accounting office at Washington and the U. S. attorney and clerk at Fort Smith; also copies of letters sent. Filed alphabetically. (Frequently, official.) 9 x 12 folders, 2 ft., in drawer of filing case. R. 1, 2d floor. (10)

WESTERN DISTRICT - HARRISON DIVISION

HARRISON

Deputy Clerk
Federal Bldg., Rush Ave. and Vine St.

Old Circuit Court Records

268. CRIMINAL DOCKET, CIRCUIT COURT, Apr. 10, 1902 - Dec. 30, 1904. Record of pleadings in criminal cases. Entered chronologically. (Rarely, official.) 13 x 18 vol., 2 in., on open steel shelf. Vault, 2d floor. (97)

269. CASH BOOK, Jan. 1, 1907 - Dec. 29, 1911. Record of receipts and disbursements of clerk. Entered chronologically. (Rarely, official.)

16 x 18 1/2 vol., 2 in., on open steel shelf. Vault, 2d floor. (98)

District Court Records

(General)

270. MINUTES, Jan. 1, 1912 - Apr. 7, 1923; Jan 30 - Oct. 1, 1933. Record of court proceedings. Entered chronologically. Vols. indexed. (Rarely, official.) 8 1/2 x 14 covers and 9 x 14 vols. (3), 1 ft. 6 in., in drawer of steel filing case and on wooden shelf. Dirty. R. 20 and vault, 2d floor. (14, 30)

271. MINUTES, Apr. 8, 1923 - May 31, 1926. Records of daily court proceedings in all types of cases. Entered chronologically. Indexed. (Occasionally, official.) 12 x 18 vol., 2 in., on metal shelf. R. 21. (21)

272. MINUTES, Jan. 1, 1912 to date. Record of daily court proceedings in all types of cases. Entered chronologically. (Frequently, official.) 10 x 14 vols. (4), 9 in., on steel shelf. Vault, 2d floor. (79)

273. BENCH DOCKET, Oct. 14, 1902 - Apr. 1923. Judge's rough docket and record. Entered chronologically. (Rarely, official.) 13 x 18 vols. (2), 4 in., on steel shelf. Vault, 2d floor. (96)

274. BENCH DOCKET, Apr. 15, 1919 - Apr. 8, 1931. Judge's rough record. Entered chronologically. (Never.) 8 x 14 loose sheets, 8 in., in drawer of wooden filing case. R. 20. (11)

275. PROCESS DOCKET, Apr. 22, 1912 - Apr. 3, 1924. Record of subpoenas in civil and criminal cases. Entered chronologically. (Rarely, official.) 16 x 17 1/2 vol., 2 1/2 in., on steel shelf. Vault, 2d floor. (95)

276. MOTION DOCKET NO. 1, Apr. 17, 1908 - Apr. 3, 1916. Showing date set aside by the court for hearing motions. Entered chronologically. (Rarely, official.) 15 x 18 vol., 2 in., on steel shelf. Vault, 2d floor. (92)

277. JUDGMENT DOCKET NO. 1, Apr. 13, 1903 - Feb. 5, 1912. Showing dates and amount of judgments in all types of cases. Entered chronologically. Indexed. (Rarely, official.) 13 x 18 vol., 2 3/4 in., on steel shelf. Vault, 2d floor. (89)

278. TRIAL DOCKET NO. 1, Apr. 13, 1903 - Apr. 23, 1912. Record of cases set for trial, showing disposition of same and dates set for re-hearings. Entered chronologically. Indexed. (Rarely, official.) 15 x 18 vol., 2 in., on open steel shelf. Vault, 2d floor. (90)

279. LAW DOCKET NO. 1, Apr. 3, 1902 - Jan. 21, 1927. Record of pleadings in cases. Entered chronologically. Indexed. (Seldom,

official.) 13 x 18 vol., 2 1/2 in., on open steel shelf. Vault, 2d floor. (86)

280. LAW DOCKET, 1923 - 1931. Record of pleadings in cases. Entered chronologically. Indexed. (Occasionally, official.) 12 x 18 vol., 3 in., on metal shelf. R. 21. (21)

281. FINAL RECORD, 1902 - 1918. Complete records of cases decided by the court. Entered chronologically. Indexed. (Occasionally, official.) 12 x 18 vols. (4), 1 ft., on metal shelves. R. 21. (21)

282. FINAL RECORD, Oct. 15, 1908 - Apr. 15, 1918. Showing final disposition of law and equity cases. Entered chronologically. Indexed. (Rarely, official.) 13 x 18 vol., 2 3/4 in., on steel shelf. Vault, 2d floor. (88)

283. LAW CASES, Nov. 5, 1903 - Feb. 19, 1935. Original pleadings, motions, judgments, etc. Filed numerically. (Occasionally, official.) 10 x 12 folders, 6 ft., in 12 metal folded document holders in wooden cabinet. R. 21. (20)

284. LAW AND JUDGMENT RECORDS, 1902 - 1930. Record of judgments in all types of cases. Entered chronologically. Indexed. (Occasionally, official.) 12 x 18 vols. (4), 1 ft., on metal shelves. R. 21. (21)

285. MISCELLANEOUS DOCKETS, MINUTES, AND RECORDS, Apr. 3, 1902 - Apr. 5, 1932. Dockets, minutes, and fee books of district and circuit courts; law, judgment, and witness records, clerk's cash books; record of court, writ docket, and bench docket. Indexed. (Never.) 12 x 18 vols. (27), 5 ft., on open wooden shelves. Vault, 2d floor. (29)

286. GENERAL INDEX TO CASES, Jan. 1, 1912 to date. Entered chronologically. (Frequently, official.) 12 x 18 vol., 2 in., on open shelf. R. 20. (12)

(Civil)

287. CIVIL DOCKET, 1907 - 1915. Record of pleadings in civil cases. Entered chronologically. Indexed. (Occasionally, official.) 12 x 18 vol., 2 in., on metal shelf. R. 21. (21)

288. CIVIL DOCKET NO. 1, Oct. 14, 1912 - Oct. 11, 1927. Record of pleadings in cases. Entered chronologically. Indexed. (Seldom, official.) 13 x 18 1/2 vol., 2 1/2 in., on open steel shelf. Vault, 2d floor. (83)

289. CIVIL DOCKET NO. 2, Dec. 17, 1907 - Jan. 30, 1914. Record of pleadings in cases. Entered chronologically. Indexed. (Seldom, official.) 16 x 18 vol., 2 in., on open steel shelf. Vault, 2d floor. (84)

(Equity)

290. EQUITY DOCKET, Oct. 1913 to date. Record of proceedings in equity suits. Entered chronologically. Indexed; vol. index. (Frequently, official.) 12 x 16 vol., 2 in., on wooden shelf. R. 20. (12)

291. EQUITY RECORD, 1902 - 1922. Record of pleadings in cases. Entered chronologically. Indexed. (Occasionally, official.) 12 x 18 vol., 3 in., on metal shelf. R. 21. (21)

292. CHANCERY RECORD NO. 2, Apr. 10, 1922 to date. Showing equity cases docketed by the clerk. Entered chronologically. Indexed; index vol. (Frequently, official.) 12 x 18 vol., 2 in., on open shelf. R. 20. (12)

293. EQUITY CASES, Dec. 1, 1902 to date. Records of cases. Arranged numerically. (Frequently, official.) 10 x 12 folders, 1 1/4 ft., in 19 metal folded document holders in wooden cabinet. R. 21. (17)

294. EQUITY ORDER BOOK, Feb. 10, 1915 - Oct. 29, 1935. Record of orders entered in equity case No. 23. Entered chronologically. Indexed; vol. index. (Seldom, official.) 12 x 18 vol., 1 in., on wooden shelf. R. 20. (12)

(Bankruptcy)

295. BANKRUPTCY DOCKET NO. 1, May 27, 1902 - Jan. 29, 1907. Record of pleadings in bankruptcy cases. Entered chronologically. Indexed. (Rarely, official.) 13 x 18 vol., 2 in., on open steel shelf, Vault, 2d floor. (87)

296. BANKRUPTCY DOCKET, Jan. 11, 1907 - Aug. 29, 1932. Record of proceedings in cases. Entered numerically. Indexed; vol. index. (Seldom, official.) 12 x 18 vol., 3 in., on wooden shelf. R. 20. (12)

297. BANKRUPTCY CASES, June 9, 1902 to date. Records of cases. Filed numerically. (Occasionally, official.) 10 x 12 folders, 3/4 ft., in 46 metal folded document holders in wooden cabinet. R. 21. (18)

298. BANKRUPTCY RECORD, 1902 - 1928. Indexed. (Occasionally, official.) 12 x 18 vol., 3 in., on metal shelf. R. 21. (21)

299. BANKRUPTCY EXHIBIT, 1901 - June 6, 1917. Bonds issued by the Missouri and North American Railway Co., surrendered by various bond holders in receivership proceedings. Arranged numerically. (Seldom, official.) 10 x 15 folders and bundles, 1/4 ft. 3 in., in wooden box and on wooden shelf. Dirty. Vault, 2d floor. (26, 27)

300. BANKRUPTCY PAPERS OF T. W. JOHNSON, MAGNESS BROTHERS, AND HARRISON GAS AND ELECTRIC COMPANY, Apr. 16, 1904 - Dec. 2, 1908; July 1, 1914 - July 3, 1919; Dec. 23, 1931 - Apr. 26, 1934. Records

of proceedings in 3 bankruptcy cases. Vols. indexed. (Rarely, official.) 10 x 12 vols. (5) and 8 x 16 bundles, 3 ft., on 2 open wooden shelves. Dirty. Vault, 2d floor. (23-25)

(Criminal)

301. CRIMINAL DOCKET NO. 2, 1907 - 1914. Record of proceedings in criminal cases. Entered chronologically. Indexed. (Occasionally, official.) 12 x 17 vol., 2 in., on metal shelf. R. 21. (21)

302. CRIMINAL DOCKETS, Oct. 8, 1923 - Sept. 30, 1934. Record of criminal cases docketed by clerk. Entered chronologically. Indexed; vol. index. (Seldom, official.) 12 x 16 vols. (2), 4 in., on wooden shelf. R. 20. (12)

303. CRIMINAL CASES, Oct. 14, 1902 to date. Original pleadings in criminal cases. Filed numerically. (Occasionally, official.) 10 x 12 folders, 11 ft., in 17 metal folded document holders in wooden cabinet. R. 21. (15)

304. RECORDS OF JAIL AND PENITENTIARY COMMITMENT, Oct. 9, 1902 - Oct. 12, 1911. Showing offender, date of commitment, and sentence. Entered chronologically. One vol. indexed. (Rarely, official.) 13 x 18 vols. (2), 5 in., on open steel shelves. Vault, 2d floor. (80, 91)

(United States Commissioner)

305. COMMISSIONER'S CRIMINAL DOCKETS, Mar. 20, 1902 - Aug. 13, 1932. Record of persons charged and arraigned before the U. S. commissioner. Entered chronologically. Indexed. (Occasionally, official.) 9 x 15 vols. (13), 1 ft., on open shelf. Vault, 2d floor. (28)

306. COMMISSIONER'S CASES, Dec. 17, 1904 to date. Original affidavits, etc., in cases. Arranged numerically. (Occasionally, official.) 10 x 12 folders, 15 ft., in 21 metal folded document holders in wooden cabinet. R. 21. (19)

307. COMMISSIONER'S TRANSCRIPTS, June 27, 1921 - May 26, 1932. Commissioner's records of cases disposed of by the court. Filed chronologically. (Occasionally, official.) 8 x 10 loose sheets, 1 ft., in drawer of wooden filing case. R. 20. (10)

(Naturalization)

308. NATURALIZATION RECORD NO. 1, Oct. 15, 1902 - Oct. 11, 1905. Record of petitions for citizenship showing disposition of each case. Entered chronologically. (Seldom, official.) 13 x 18 vol., 2 in., on open steel shelf. Vault, 2d floor. (99)

(Fiscal Accounts)

309. FEE BOOK, July 12, 1902 - Oct. 25, 1906. Record of fees and

disbursements of clerk. Entered chronologically. (Rarely, official.) 13 x 18 1/2 vol., 2 1/2 in., on open steel shelf. Vault, 2d floor. (82)

310. CASH BOOK, 1907 - 1930. Record of fees and disbursements of the clerk. Entered chronologically. Indexed. (Never.) 12 x 18 vol., 3 in., on metal shelf. R. 21. (21)

311. CASH BOOK NO. 3, July 1, 1930 to date. Record of clerk's daily receipts and disbursements. Entered chronologically. Indexed; vol. index. (Daily, official.) 14 x 16 vol., 1 in., on open wooden shelf. R. 20. (12)

312. FEES AND EXPENSES RECEIVED FROM THE U. S. MARSHAL, Aug. 12, 1902 - May 2, 1914. Entered chronologically. Indexed. (Rarely, official.) 9 x 16 vols. (2), 2 in., on open wooden shelf. Vault, 2d floor. (31)

313. CLERK'S QUARTERLY REPORTS, Sept. 30, 1912 to date. Reports of the court. (Rarely, official.) 8 x 10 loose sheets, 1 ft., in drawer of wooden filing case. R. 20. (9)

(Miscellaneous)

314. APPEARANCE DOCKET, July 12, 1902 - Oct. 4, 1909. Record of persons summoned to appear in court. Entered chronologically and alphabetically. (Rarely, official.) 13 x 18 1/2 vol., 2 1/2 in., on open steel shelf. Vault, 2d floor. (85)

315. JURORS DOCKET, Oct. 13, 1902 - Apr. 25, 1912. Record of jurors summoned, showing name, address, and date ordered to appear. Entered alphabetically. (Rarely, official.) 12 x 16 vol., 2 in., on open steel shelf. Vault, 2d floor. (81)

316. RECOGNIZANCE OF WITNESSES, Oct. 14, 1902 - Oct. 17, 1912. Record of witnesses recognized and put under oath to appear at time and place set for hearing of case in which they are to testify. Entered chronologically. (Rarely, official.) 13 x 18 vol., 2 in., on open steel shelf. Vault, 2d floor. (93)

317. WITNESS DOCKET NO. 1, Oct. 13, 1902 - Oct. 10, 1911. Showing name and address of each witness, name of case in which witness is to testify, and date. Indexed. (Rarely, official.) 12 x 16 vol., 2 in., on open steel shelf. Vault, 2d floor. (94)

318. MISCELLANEOUS FILES, Nov. 3, 1902 to date. Receipts, vouchers, and cancelled checks, discharge of witnesses, letters, old accounts, emolument returns, praecipis for subpoenas, orders of court, bond appointments, powers of attorney of bonding companies, petit jury venire facias, U. S. tax liens, and circuit court grand jury records. (Seldom, official.) 3 x 6 and 10 x 12 folders, 10 ft., in 5 drawers of wooden filing cases and in 18 metal folded document holders. Rs. 20 and 21. (13, 16)

319. MISCELLANEOUS RECORD, July 1, 1918 - July 26, 1923; Apr. 1930 to date. Showing various official papers issued by the U. S. commissioner, per diem expenditures of court, record of attorneys admitted to practice, naturalization, and record of surety company bonds. Indexed; vol. index. (Frequently, official.) 12 x 16 vol., 1 in., on shelf. R. 20. (12)

320. MILE ORR v. NEWTON COUNTY, ARKANSAS, Dec. 16, 1916 - June 6, 1917. Records of case. Index. (Rarely, official.) 4 x 7 loose sheets, 6 in., on open wooden shelf. Dirty. Vault, 2d floor. (22)

321. TRUSTEE BONDS NO. 1, July 17, 1902 - July 11, 1934. Indexed; vol. index. (Daily, official.) 12 x 18 vol., 1 1/2 in., on wooden shelf. R. 20. (12)

322. LOOSE-LEAF FILE, Apr. 1936. Indexed. (Daily, official.) 9 x 16 loose-leaf book, 1/2 in., on wooden shelf. R. 20. (12)

(Correspondence)

323. CORRESPONDENCE, Dec. 3, 1912 to date. With individuals and district clerk. (Rarely, official.) 8 x 10 loose sheets, 1 ft., in 2 drawers of wooden filing case. R. 20. (8)

WESTERN DISTRICT - TEXARKANA DIVISION

TEXARKANA

Deputy Clerk
Federal Bldg.,

5th and 6th Sts. and State Line Ave.

The court first occupied the old United States Courthouse and Post Office on Line Avenue, one-half of the building being in Arkansas and the other in Texas. In 1932 the Arkansas Municipal Building provided temporary quarters during the erection of the new United States Courthouse and Post Office, which was occupied in 1933.

Old Circuit Court Records

324. DISBURSEMENTS OF REGISTRY FUNDS, CIRCUIT COURT, Jan. 30, 1888 - Mar. 23, 1889. Copies of checks showing number of law or equity case. Entered chronologically. (Rarely, official.) 10 x 14 1/2 vol., 2 1/4 in., on open steel roller shelf in vault. R. 304A. (119)

District Court Records

(General)

325. MINUTES, July 1, 1912 - Dec. 31, 1935. Daily record of court proceedings. Entered and filed chronologically. (Occasionally, official.) Various sized vols. (6), loose-leaf books (20), and envelope, 4 ft., in 3 drawers of steel filing case in vault. R. 304A. (101)
326. BENCH DOCKETS, Nov. 26, 1887 - Feb. 19, 1932. Listing cases in order of date set for hearing; made for convenience of the judge. Entered chronologically. (Seldom, official.) 13 x 18 1/2 vols. (5), loose-leaf book, and bundle, 1 ft. 6 in., on roller shelf of steel cabinet in vault. R. 304A. (125)
327. BAR DOCKETS, June 8, 1889 - Dec. 20, 1924. Circuit court law and district court admiralty, criminal, law, and chancery dockets; showing case number, date set for hearing, parties, attorneys, marshal's returns, date returned, and orders of court in each case; made for convenience of attorneys. Entered chronologically. (Seldom, official.) 13 1/2 x 18 1/2 and 12 1/2 x 18 1/2 vols. (9), 1 ft. 1 in., on open steel roller shelf of vault. R. 304A. (124)
328. WRIT DOCKETS, May 2, 1887 - Nov. 5, 1896; Jan. 23, 1912 - Oct. 19, 1923. Record of subpoenas issued and marshal's returns, in criminal, law, equity, and bankruptcy cases, showing process, by whom ordered, to or against whom, date returnable, date delivered, date returned and filed, and disposal of subpoena. Entered chronologically. (Older records, rarely; later records, seldom, official.) 12 1/2 x 18 1/2 and 15 1/2 x 17 1/2 vols. (2), 5 in., on open steel roller shelf in vault. Bindings broken. R. 304A. (130, 117)
329. LAW DOCKET, July 21, 1918 to date. Entered chronologically and numerically. (Daily, official.) 11 x 15 vol., 3 1/2 in., on open steel roller shelf. R. 302. (31)
330. LAW DOCKETS AND RECORDS, July 11, 1887 - Apr. 25, 1932. Entered chronologically. (Seldom, official.) Various sized vols. (4) and loose-leaf books (2), 1 ft. 2 1/2 in., on roller shelf of steel cabinet in vault. R. 304A. (123)
331. LAW AND EQUITY DOCKETS AND RECORDS, May 22, 1891 - Aug. 22, 1925. Entered and filed numerically and alphabetically. Indexes. (Seldom, official.) Various sized vols. (9) and 10 x 14 envelopes, 1 ft. 5 1/2 in., on open steel roller shelves in vault. R. 304A. (127)
332. RULE DOCKET, Oct. 17, 1887 - Aug. 17, 1901. Showing court rulings in law, equity, and criminal cases. Entered chronologically. (Seldom, official.) 16 x 17 1/2 vol., 2 3/4 in., on open steel roller shelf in vault. R. 304A. (115)
333. JUDGMENT DOCKET, July 11, 1887 - Nov. 20, 1909. Record of

court judgments in civil cases. Entered numerically. Indexed. (Seldom, official.) 12 1/2 x 18 1/2 vol., 2 1/2 in., on roller shelf of steel cabinet in vault. R. 304A. (122)

334. EXECUTION DOCKET, May 22, 1891 - Mar. 10, 1922. Record of judgments to be executed. Entered chronologically. Indexed. (Seldom, official.) 13 1/2 x 18 1/2 vol., 2 1/2 in., on roller shelf of steel cabinet in vault. R. 304A. (121)

335. LAW AND EQUITY RECORDS, Jan. 11, 1920 to date. Filed numerically. (Daily, official.) 10 x 15 loose-leaf books and covers, 6 ft., in drawers of steel filing cases. R. 302. (32)

336. COURT ORDERS IN LAW, EQUITY, AND BANKRUPTCY CASES, Jan. 1, 1912 - Dec. 31, 1935. Filed chronologically and by type of case. (Seldom, official.) 9 x 14 stapled sheets, 3 ft. 4 in., in 2 drawers of steel filing case in vault. R. 304A. (108)

337. LAW RECORD AND ORDERS, July 21, 1918 to date. Entered chronologically and numerically. (Daily, official.) 11 x 15 vol., 3 1/2 in., on open steel roller shelf. R. 302. (31)

338. GENERAL CASE FILES, May 2, 1887 - May 22, 1917. Records of law, criminal, admiralty, and bankruptcy cases, clerk's and commissioner's correspondence, complaints before the commissioner, sentences, commitments, mittimus, subpoenas, capias, fieri facias, scire facias, summons on forfeited bonds, affidavits, and attachments. Filed chronologically and numerically. (Never.) Various sized envelopes and bundles, 46 ft., on 5 shelves of steel locker cabinet. Damaged by careless handling and faulty containers, brittle, dirty, torn. R. 304A. (100)

339. BANKRUPTCY AND CRIMINAL CASES, Feb. 5, 1925 to date. Record of cases. Filed numerically. (Daily, official.) 4 x 8 covers, 14 ft., in 24 steel folded document holders. R. 302. (33)

340. GENERAL FILE, June 1, 1887 - Dec. 16, 1929. Bankruptcy and equity cases, bills of exceptions in law and equity cases, commissioner's non-case papers, and commissioner's criminal record books. Filed and entered chronologically and numerically. (Never.) 4 x 10 vols. (49), bundles, and loose papers, 58 ft. 8 in., on 5 shelves of steel locker cabinet. Damaged by careless handling and faulty containers, brittle, dirty, torn. W. side of R. 303A. (99)

(Equity)

341. EQUITY CASES, Apr. 30, 1906 - May 1, 1924. Records of proceedings in cases. Filed numerically. (Monthly, official.) Various sized folders, envelopes, covers, and bundles, 6 ft. 6 in., in 4 drawers of steel filing case. R. 304A. (26)

342. EQUITY CASES, Dec. 16, 1912 - Oct. 8, 1931. Records of

proceedings in cases. Filed numerically. (Monthly, official.) Various sized vols., folders, envelopes, and bundles, 14 ft., in 4 drawers of steel filing case. R. 304A. (29)

343. FINAL CHANCERY RECORD, Apr. 4, 1905 - July 12, 1925. Showing final disposition of cases. Entered chronologically. Index vols. (Seldom, official.) 12 1/2 x 18 1/2 vol., 3 in., on roller shelf of steel cabinet in vault. R. 304A. (128)

344. EQUITY RECORDS AND ORDERS, July 21, 1918 to date. Arranged chronologically and numerically. (Daily, official.) 11 x 15 vol., 3 1/2 in., on open steel roller shelf. R. 302. (31)

345. CHANCERY RECORDS AND ORDERS, July 21, 1918 to date. Entered chronologically and numerically. (Daily, official.) 11 x 15 vol., 3 1/2 in., on open steel roller shelf. R. 302. (31)

(Bankruptcy)

346. BANKRUPTCY DOCKETS AND RECORDS, Aug. 1, 1898 - Aug. 1, 1933. 2 dockets, 2 record books, 5 referee's record and account books, clerk's book of memoranda for voluntary bankruptcy statistics, and referee's reports in bankruptcy. Entered and arranged chronologically. (Seldom, official.) Various sized vols. (11) and bundle, 2 ft. 5 1/4 in., on roller shelf of steel cabinet in vault. R. 304A. (129)

347. BANKRUPTCY CASES, Feb. 20, 1911 - Aug. 30, 1934. Inventories and records of proceedings. Filed numerically. (Monthly, official.) 4 x 9 covers and bundles, 140 ft., in 120 folded wooden document holders in 12 drawers of wooden filing cases. R. 304A. (28)

348. BANKRUPTCY FILES, CHECKS, AND EXHIBITS, Nov. 21, 1911 to date. Trustee's checks, bankruptcy files up for review, discharges, and bond issues of bankrupts. Filed numerically. (Monthly, official.) 4 x 14 folded documents, 8 ft. 9 in., in 3 drawers of steel filing case in vault. R. 304A. (23)

349. BANKRUPTCY RECORDS, Jan. 1, 1924 - Nov. 1, 1927. Claims filed in the Morris Guaranteed Gusher case. Filed alphabetically. (Never.) 3 x 9 folded papers, 36 ft., in 6 closed pasteboard boxes. Record room, 4th floor. (97)

350. BANKRUPTCY RECORDS AND ORDERS, July 21, 1918 to date. Entered chronologically and numerically. (Daily, official.) 11 x 15 vol., 3 1/2 in., on open steel roller shelf. R. 302. (31)

351. BANKRUPTCY CHECKS, June 20, 1923 - Apr. 27, 1932. Cancelled checks of trustees in bankruptcy issued in the administration of the affairs of bankrupts; also bank statements. Filed numerically. (Seldom, official.) 3 1/2 x 8 1/2 loose sheets, 7 ft. 1 in., in 4 drawers of steel filing case in vault. R. 304A. (109)

(Admiralty)

352. ADMIRALTY RECORD, Nov. 28 - Dec. 2, 1892. Showing proceedings in one case. Indexed. (Rarely, official.) 12 x 16 1/2 vol., 2 1/8 in., on metal roller shelf in vault. R. 304A. (104)

(Criminal)

353. CRIMINAL DOCKETS AND RECORDS, July 11, 1887 - Feb. 2, 1933. Dockets, final record, and miscellaneous forms. Index. (Seldom, official.) Various sized vols. (9), loose-leaf book, and bundle, 2 ft. 2 1/2 in., on open steel roller shelf in vault. R. 304A. (126)

354. CRIMINAL CASES, May 14, 1908 - Nov. 13, 1928. Records of proceedings in cases, including indictments and dispositions. Filed numerically. (Monthly, official.) 4 x 9 pockets, covers, and bundles, 22 ft. 6 in., in 18 steel folded document holders. R. 304A. (27)

355. CRIMINAL EXHIBITS, Dec. 12, 1923 - Dec. 31, 1928. Papers filed as evidence. (Never.) 9 x 15 envelopes and loose-leaf books (6), 5 ft., in canvas and pasteboard boxes. R. 304A. (96)

(United States Commissioner)

356. COMMISSIONER'S DOCKET, July 21, 1918 to date. Entered chronologically and numerically. (Daily, official.) 11 x 15 vol., 3 1/2 in., on open steel roller shelf. R. 302. (31)

357. COMMISSIONER'S DOCKETS, Jan. 18, 1930 to date. Entered chronologically. (Seldom, official.) 9 1/2 x 15 vols. (4) and loose-leaf books (2), 5 1/2 in., on roller shelves of steel cabinet in vault. R. 304A. (120)

358. COMMISSIONER'S CASES, June 1, 1913 - Nov. 4, 1931. Records of each case showing defendant, nature of charge, and disposition. Filed numerically. (Seldom, official.) 8 1/2 x 14 folders, 3 ft. 7 in., in 2 drawers of steel filing case in vault. R. 304A. (102)

359. COMMISSIONER'S PAPERS, Jan. 11, 1920 to date. Filed chronologically. (Daily, official.) 10 x 15 loose-leaf books and covers, 6 ft., in drawers of steel filing cases. R. 302. (32)

360. COMMISSIONER'S RECORD OF RECOGNIZANCES, July 21, 1918 to date. Entered chronologically and numerically. (Daily, official.) 11 x 15 vol., 3 in., on open steel roller shelf. R. 302. (31)

(Naturalization)

361. NATURALIZATION RECORDS, May 18, 1907 to date. Declarations of intention, petitions, and supporting papers. Entered numerically. (Monthly, official.) Various sized vols. (4) and loose-leaf books (2), 7 in., on roller shelf of steel cabinet in vault. R. 304A. (116)

(Attorneys)

362. ROLL OF ATTORNEYS, July 21, 1918 - June 8, 1936. Entered chronologically and numerically. Indexed. (Daily, official.) 11 x 15 vol., 4 in., on open steel roller shelf. R. 302. (31)

(Fiscal Accounts)

363. CASH JOURNALS, July 2, 1918 to date. Showing fees earned and collected, source of fees, and petty cash disbursements. Entered chronologically. (Monthly, official.) 9 x 14 and 10 1/2 x 13 vols. (2), 2 1/2 in., on open steel roller shelf in vault. R. 304A. (112)

364. CASH BOOKS, Feb. 1, 1907 - Feb. 26, 1927. Showing money received and disbursed. Entered chronologically. (Seldom, official.) 15 1/2 x 15 1/2 and 15 1/2 x 18 1/2 vols. (4), 7 in., on metal roller shelf in vault. R. 304A. (105)

365. CLERK'S CASH BOOK, July 21, 1918 to date. Entered chronologically and numerically. (Daily, official.) 11 x 15 vol., 3 in., on open steel roller shelf. R. 302. (31)

366. TRUST FUND VOUCHERS, July 21, 1918 to date. Entered chronologically and numerically. (Daily, official.) 11 x 15 loose-leaf book, 2 1/2 in., on open steel roller shelf. R. 302. (31)

367. REGISTRY FUND LEDGER, July 21, 1918 to date. Entered chronologically and numerically. (Daily, official.) 11 x 15 vol., 3 in., on open steel roller shelf. R. 302. (31)

368. FEES AND EXPENSES RECEIVED FROM THE U. S. MARSHAL, Aug. 24, 1890 - May 16, 1914. Entered chronologically. Indexed. (Seldom, official.) 11 x 16 vol., 1 1/4 in., on open steel roller shelf in vault. R. 304A. (118)

369. ANNUAL REPORTS, June 30, 1917 to date. To the Attorney General on funds in the court registry and the hands of the clerk. Filed chronologically. (Seldom, official.) 4 x 9 folded papers, 4 in., in drawer of wooden filing case in vault. R. 304A. (110)

370. REPORTS ON REGISTRY FUND, Nov. 11, 1912 - Nov. 14, 1928. Clerk's reports on registry funds. Filed chronologically. (Seldom, official.) 4 x 9 folded papers, 4 in., in drawer of wooden filing case in vault. R. 304A. (107)

371. QUARTERLY REPORTS, Jan. 1, 1903 - Mar. 31, 1931. Showing clerk's earnings of fees and emoluments under the fee system and amount earned by the court for the government. Filed chronologically. (Seldom, official.) 4 x 9 folded papers, 2 ft. 4 in., in 3 drawers of wooden filing case in vault. R. 304A. (106)

372. GENERAL FISCAL FILE, Mar. 31, 1898 - June 30, 1921. Claims for

remuneration, emolument reports, receipts and certificates for deposit of funds, etc. (Never.) 8 x 10 envelopes and loose sheets, 2 ft., in pasteboard box. Damaged by careless handling and faulty containers, brittle, dirty, torn, scattered. Record room, 4th floor. (95)

(Miscellaneous)

373. BANK DEPOSITS, WITHDRAWALS, STATEMENTS OF ACCOUNT, INITIAL AND FINAL CIVIL DOCKET REPORTS, AND DISCHARGE OF WITNESSES, July 8, 1912 to date. Filed and entered chronologically. (Occasionally, official.) Various sized covers, loose-leaf books, and bundles, 47 ft. 6 in., in 19 drawers of steel filing cases. R. 302. (30)

374. GRAND AND PETIT JURY RECORDS, Nov. 5, 1915 to date. Writs of venire facias, jury lists, oaths, and grand jury praecipis and subpoenas. Filed chronologically. (Seldom, official.) 3 x 5 1/4 and 4 x 9 loose and folded sheets, 6 ft. 6 in., in 7 drawers of steel filing case in vault. R. 304A. (113, 114)

375. COURT RULES AND MISCELLANEOUS PAPERS, Jan. 1, 1894 to date. Records pertaining to court rules and designations, removal of prisoners, charges ignored, affidavits and petitions as to juror and witness fees, department circulars, and supplies. Filed chronologically. (Frequently, official.) 3 x 4 loose papers and 4 x 9 folded papers, 2 ft. 1 in., in drawers of wooden filing case in vault. R. 304A. (111)

376. EXHIBITS IN CASE, n. d. Set of private accounts books. Indexed. (Never.) 11 x 16 vols. (10), 1 ft. 6 in., on floor. Record room, 4th floor. (98)

377. PARDON, Nov. 3, 1888. Pardon of a negro signed by President Cleveland. (Never.) 3 x 8 folded document, 1/12 in., in correspondence tray on desk. R. 304A. (25)

378. RECORD OF JURORS DRAWN, July 21, 1918 to date. Entered chronologically and numerically. (Daily, official.) 11 x 15 vol., 3 in., on open steel roller shelf. R. 302. (31)

379. RECORD OF BONDING COMPANIES, July 21, 1918 to date. Entered chronologically and numerically. (Daily, official.) 11 x 15 loose-leaf book, 2 1/2 in., on open steel roller shelf. R. 302. (31)

(Correspondence)

380. GENERAL CORRESPONDENCE, Mar. 5, 1913 - Nov. 9, 1932. With attorneys in regard to cases. Filed chronologically. (Seldom, official.) 8 1/2 x 11 folders, 1 ft. 5 in., in 2 drawers of steel filing case in vault. R. 304A. (103)

381. GENERAL CORRESPONDENCE, Jan. 11, 1920 to date. Filed chronologically. (Daily, official.) 10 x 15 covers, 6 ft., in drawers of steel filing cases. R. 302. (32)

Referee in Bankruptcy
J. M. Carter Bldg., 212 Olive St.

382. BANKRUPTCY CASES, Mar. 7, 1933 to date. Petitions, schedules, orders, claims, proofs of petitions and claims, proofs of debt, and power of attorney. Filed numerically. (Frequently, official.) 3 x 9 covers, 2 ft. 6 in., in 6 wooden folded document holders in office. No room number. (38)

383. GENERAL FILE, Mar. 7, 1933 to date. Correspondence, legal forms in bankruptcy proceedings, and the referee's semiannual reports. Filed alphabetically. (Daily, official.) 9 x 12 folders, 1 ft. 6 in., in 4 drawers of wooden filing case in office. No room number. (37)

