

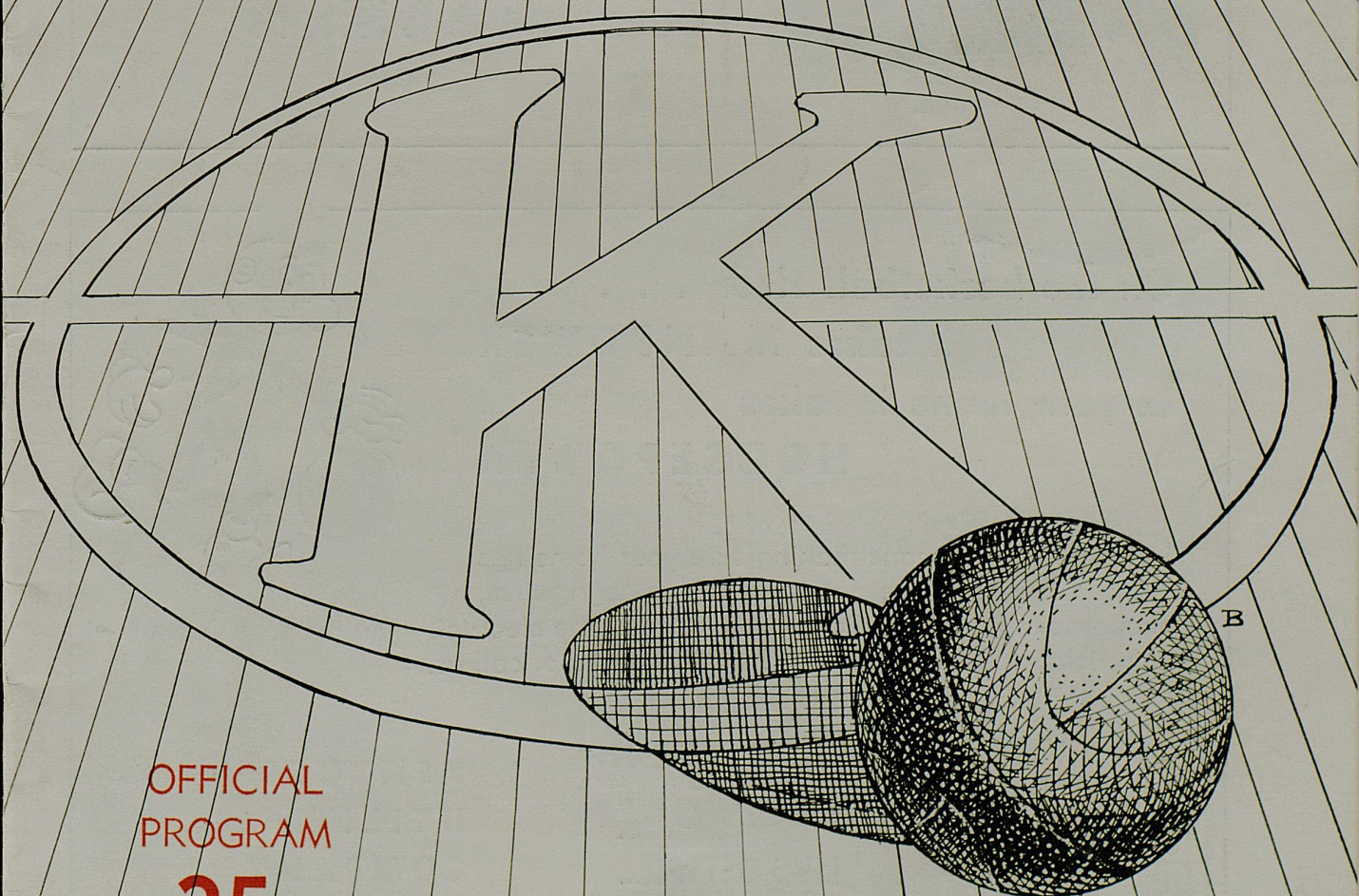
copy 2

*National Collegiate*

# BASKETBALL CHAMPIONSHIP

MIDEAST REGIONAL

MARCH 14-15, 1958



OFFICIAL  
PROGRAM

**25c**

MEMORIAL COLISEUM  
UNIVERSITY OF KENTUCKY

# THE LAFAYETTE

*Lexington's Favorite Hotel*



*extends a*

**HEARTY WELCOME**

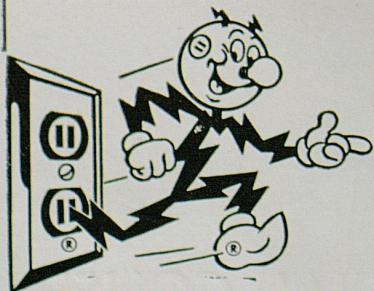
*to*

**Tournament Visitors**

**On the basketball floor . . .  
it takes MANPOWER  
In your home it takes  
HOUSEPOWER**



HOUSEPOWER means making sure your home has a big enough service entrance, big enough wires, enough circuits and switches to supply all the electricity you need. Ask your electrician for a HOUSEPOWER check . . . or call us.



**REDDY WIRING**  
FOR MORE  
**HOUSEPOWER**  
TO  
**LIVE BETTER...**  
*Electrically*

**KENTUCKY  
UTILITIES  
COMPANY**

# TWENTIETH ANNUAL NATIONAL COLLEGIATE BASKETBALL CHAMPIONSHIP

## Mideast Regional

March 14-15, 1958

Memorial Coliseum  
UNIVERSITY OF KENTUCKY

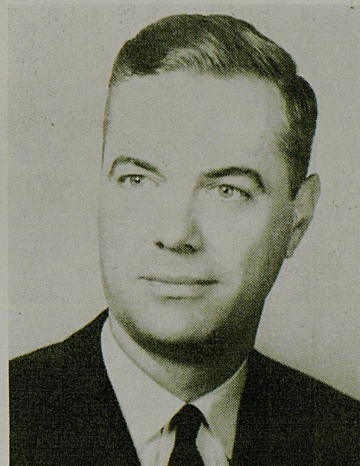


### Welcome . . .

We wish to take this opportunity to extend a cordial and hearty welcome to the visitors who are here for the Regional Section of the National Collegiate Athletic Association Tournament. We also wish to extend a sincere welcome to the fine basketball teams which will participate in this tournament. The fact that these teams are participating in a tournament which leads to the national basketball title indicates quite clearly the high quality of the athletic programs in these institutions.

The faculty, staff, and student body of the University of Kentucky extend their sincere greetings and take this means of expressing the hope that you will enjoy your visit to our campus.

Frank G. Dickey, President  
University of Kentucky



DR. FRANK G. DICKEY



BERNIE SHIVELY

A tall, silver-haired administrator, who was a three-sport star in his collegiate days at Illinois and has served as Director of Athletics at Kentucky since 1938, serves in the capacity of Tournament Manager of the Mideast Regional. He is Bernie A. Shively, capable supervisor of one of the nation's top athletic plants. Former Big Ten heavyweight wrestling champ and an All-America guard on the same Illini grid team made famous by Red Grange, "Shive" now heads the Southeastern Conference Coaches and Athletic Directors Association and is a member-elect of the NCAA basketball committee.

**OFFICIAL NCAA TOURNAMENT PROGRAM**

Edited by Ken Kuhn

Advertising Solicitation by Claude McGaughey, Jr.

PURCELL'S

... Central Kentucky's Leading  
Department Store ... Since 1887

Like all Kentuckians . . . we at Purcell's know the importance of a good game well played . . . It's a Kentucky tradition of which all are justly proud and one of the most important facets of fine sportsmanship are our excellent Basketball Tournaments . . . Everyone in Lexington looks forward to these events that form the highlights of our sporting calendar . . . and we are proud to extend our hand in welcome.

... Everything Under One Roof

The Purcell Company, Inc.

320-330 West Main Street  
Lexington 6, Kentucky

# History of the National Collegiate Basketball Championship

The National Collegiate Basketball Championship (University Division), generally referred to as the NCAA Tournament, was inaugurated in 1939 as the result of a recommendation from the National Association of Basketball Coaches that a basketball tournament be held annually to determine an official national champion.

For the first time last year, two national champions were decided as the result of the tournament being separated into two divisions—the University Division in which schools playing a major schedule compete and a College Division comprising smaller schools.

The established tournament, of which the Mideast Regional is a part, is now known officially as the National Collegiate Basketball Championship (University Division).

Under the pattern of the original tournament as revised in 1951 and later, the path leading to the national championship—which will be decided this year at Freedom Hall on the State

Fairgrounds in Louisville March 21-22 — is a rocky enough one to assure that the eventual national champion is truly a top flight basketball team worthy of the honor of heading the 450-member NCAA. The College Division, with a field of 32 teams, winds up with national finals at Evansville, Ind., March 12-14.

The University Division draws its participants from nearly 200 eligible schools, with 24 different teams competing. Sixteen champions of major conferences qualify automatically and "at large" berths go to eight other teams to round out the field. First round preliminaries took place at various sites March 11-13 with winners advancing to four regional tournaments—East at Charlotte, N. C.; Mideast at Lexington; Midwest at Lawrence, Kansas; and West at San Francisco. Regional winners go on to the national semi-finals and finals at Louisville.

The complete University Division tournament bracket is on page 21.



**Only \$1.25 a Week  
For a Pair**

**NORTH BROADWAY AT LOUDON AVE.**

**DIAL 4-0612**

**MORE PEOPLE RIDE ON GOODYEAR TIRES THAN ON ANY OTHER KIND!**

## MARLOWE TIRE CO., INC.

*"Best Service In Bluegrass"*

### Complete Tire Service

- PASSENGER
- TRUCK
- FARM TIRES
- OFF ROAD TIRES

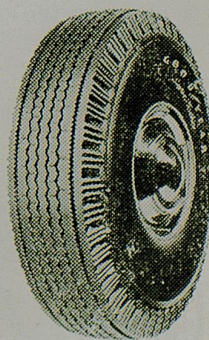
**A Tremendous Value!  
3-T Super-Cushion**

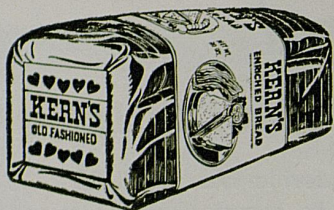
by **GOOD-YEAR**

Features famous 3-T Cord Body and Stop-Notch tread design.

**\$13<sup>35</sup>**

Size 6.70 x 15 black tube-type plus tax and recappable tire





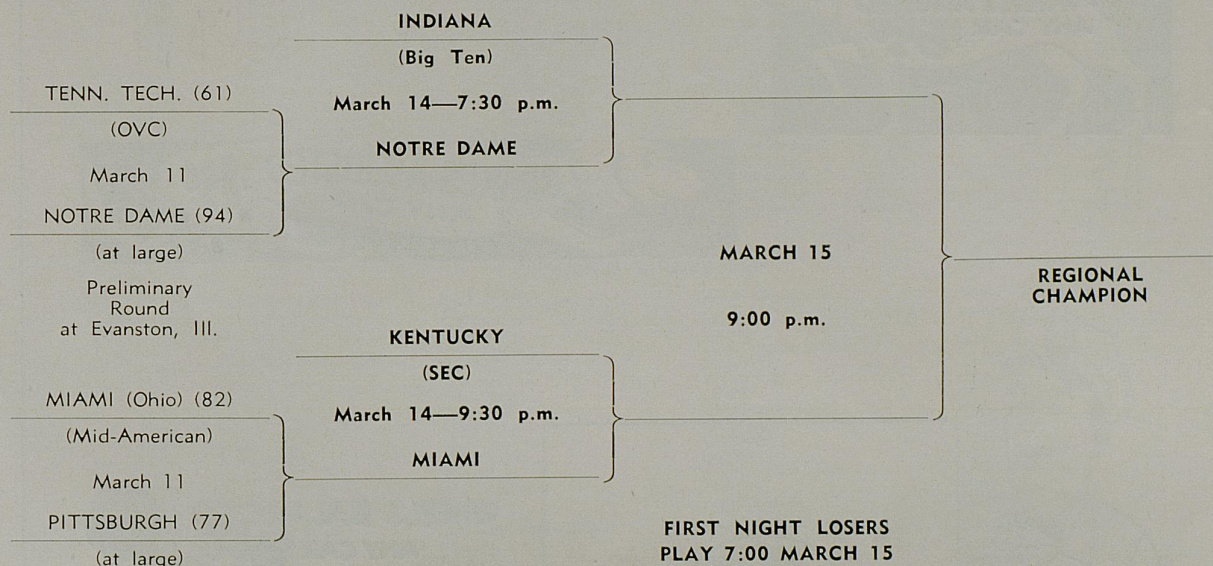
*Take Home -*

# KERN'S BREAD



# THE MIDEAST REGIONAL TOURNAMENT

Memorial Coliseum — University of Kentucky  
MARCH 14-15



## The Tournament Trail

For the second successive year, University of Kentucky's spacious Memorial Coliseum is the site of one of the four regional eliminations leading to the 1958 championship of the cage world.

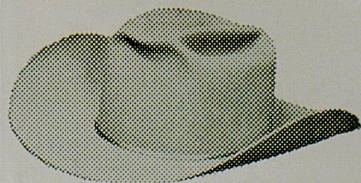
Although the Kentucky Wildcats have long been one of the top basketball powers of the country and since 1950 has had one of the nation's finest cage facilities in its Coliseum, the only previous NCAA Tournament action to take place here was a first-round playoff in 1955 and the Midwest Regional last year.

The Mideast Regional being played here tonight draws its teams in two ways. Champions of the Southeastern Conference (Kentucky) and the Big Ten (Indiana) qualified automatically for berths under the NCAA's plan of recognizing 16 major conference champions. The two other teams advance to the Regional only after proving themselves in preliminary playoffs at the Northwestern fieldhouse in Evanston, Ill., last Tuesday.

Out of the Lexington Regional, one of four such tournaments going on simultaneously in different parts of the country, will come a regional champion who qualifies to advance to the semi-finals at Louisville's Freedom Hall next Friday, March 21. The Lexington survivor is paired against the East Regional winner for the Eastern Championship and the winner goes into a battle Saturday night for the National Championship.



### The Frontier Shop of Livestock Health & Supplies



For Authentic Western Wear

Boots By Justin . . . .

For Magic Of The West

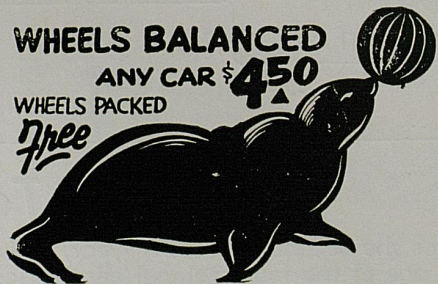
Hats By Bradford

1093 W. HIGH ST.

DIAL 5-2748

"At the Sign of the Galloping White Horse"





Sales and Service

# WHEEL & AXLE SERVICE

218 WALNUT  
Lexington, Kentucky



## NATIONAL CHAMPIONSHIP RESULTS

Year	Site	Champion	Runner-up	Final Score
1939	Northwestern	Oregon	defeated Ohio State	46-33
1940	Kansas City, Mo.	Indiana	defeated Kansas	60-42
1941	Kansas City, Mo.	Wisconsin	defeated Washington State	39-34
1942	Kansas City, Mo.	Stanford	defeated Dartmouth	53-38
1943	New York City	Wyoming	defeated Georgetown	46-34
1944	New York City	Utah	defeated Dartmouth	42-40
1945	New York City	Oklahoma A&M	defeated N. Y. U.	49-45
1946	New York City	Oklahoma A&M	defeated North Carolina	43-40
1947	New York City	Holy Cross	defeated Oklahoma	58-47
1948	New York City	Kentucky	defeated Baylor	58-42
1949	Washington	Kentucky	defeated Oklahoma A&M	46-36
1950	New York City	C.C.N.Y.	defeated Bradley	71-68
1951	Minnesota	Kentucky	defeated Kansas State	68-58
1952	Washington	Kansas	defeated St. John's	80-63
1953	Kansas City, Mo.	Indiana	defeated Kansas	69-68
1954	Kansas City, Mo.	LaSalle	defeated Bradley	92-76
1955	Kansas City, Mo.	San Francisco	defeated LaSalle	77-63
1956	Northwestern	San Francisco	defeated Iowa	83-71
1957	Kansas City, Mo.	North Carolina	defeated Kansas	54-53*

\* Three overtimes

## Regional Champions

**East Champion**  
 1939 Ohio State  
 1940 Indiana\*  
 1941 Wisconsin\*  
 1942 Dartmouth  
 1943 Georgetown  
 1944 Dartmouth  
 1945 N. Y. U.  
 1946 North Carolina  
 1947 Holy Cross\*  
 1948 Kentucky\*  
 1949 Kentucky\*  
 1950 C. C. N. Y.\*  
 1951 Kentucky\*

**East Champion**  
 1952 St. John's  
 1953 L. S. U.  
 1954 LaSalle\*  
 1955 LaSalle  
 1956 Temple  
 1957 North Carolina\*

\* National Champion.

### East Runner-Up

Villanova  
 Duquesne  
 Pittsburgh  
 Kentucky  
 DePaul  
 Ohio State  
 Ohio State  
 Ohio State  
 C. C. N. Y.  
 Holy Cross  
 Illinois  
 N. C. State  
 Illinois

### Midwest Champion

Illinois  
 Indiana\*  
 Penn State  
 Iowa  
 Iowa  
 Michigan State

### West Champion

Oregon\*  
 Kansas  
 Washington State  
 Stanford\*  
 Wyoming\*  
 Utah\*  
 Oklahoma A&M\*  
 Oklahoma A&M\*  
 Oklahoma  
 Baylor  
 Oklahoma A&M  
 Bradley  
 Kansas State

### West Champion

Kansas\*  
 Kansas  
 Bradley  
 Colorado  
 Southern Methodist  
 Kansas

### West Runner-Up

Oklahoma  
 U. S. C.  
 Arkansas  
 Colorado  
 Texas  
 Iowa State  
 Arkansas  
 California  
 Texas  
 Kansas State  
 Oregon State  
 Baylor  
 Oklahoma A&M

### Far West Champions

Santa Clara  
 Washington  
 U. S. C.  
 San Francisco\*  
 San Francisco\*  
 San Francisco

Enjoy The Best ...



CREAM OF THE  
BLUE GRASS

There's A Dixie  
Dealer Near You

PHONE 2-1660

Superior Flavor ...

**ASHLAND  
DAIRIES**  
PASTEURIZED PRODUCTS

**MILK PRODUCTS**

At Your Grocer  
From Your Routeman

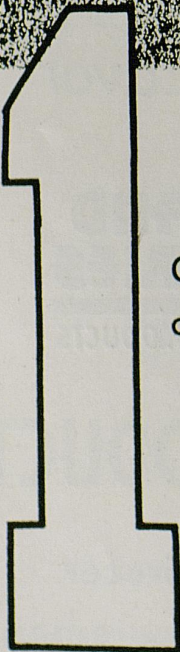
PHONE 2-1660

# "Just like being a spectator" ...

Year after year the Ashland-Aetna Oil Sports Network reaches Kentucky sports fans everywhere with exciting broadcasts of Kentucky collegiate football and basketball games.

If you can't attend your favorite game, the next best thing is to listen to it over the Ashland-Aetna Oil Sports Network. We're proud of the fact that so many fans say, it's "just like being a spectator."

ASHLAND OIL & REFINING COMPANY  
AETNA OIL COMPANY



## number ONE Sports Station in CENTRAL KENTUCKY

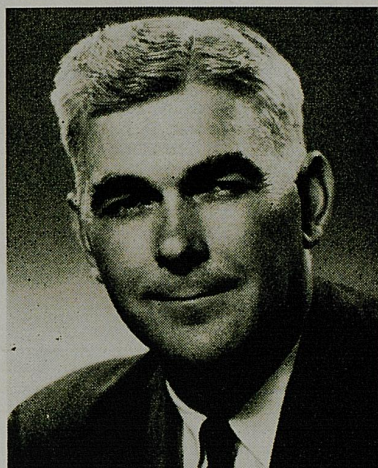
Carrying All of the N.C.A.A. Regional Tournament  
and the State High School Basketball Tournaments  
over the 40 station

### Ashland - Aetna Oil Sports Network

630  
on your radio  
Dial . . .

The logo for WLAP Radio is located in the bottom right corner. It features the call letters 'WLAP' in a bold, blocky sans-serif font, with the word 'Radio' written in a large, elegant script font below it. The entire logo is set against a solid black rectangular background. The background of the lower section of the advertisement is a horizontal band with a dense, grainy, stippled texture, similar to the one above.

# INDIANA—Hoosiers



COACH BRANCH McCracken

Indiana Basketball Coach Branch McCracken has established one of the nation's greatest coaching records in his 17 seasons at the helm of the Hurryin Hoosiers. In only three of those years have his teams failed to finish in the first division of the rugged Big Ten and they've either won the championship or been runner-up to it on eleven occasions—the latest a sensational comeback win of the title this year. His teams have brought home national crowns twice (1940 and 1953) in only three tries and lost only once in eight national tournament games.

## SEASON RECORD

Indiana	Opponent
68.....	Ohio University .....76
61.....	Kansas State .....66
73.....	Missouri .....78
79.....	St. Mary's .....66
51.....	Oregon State .....62
78.....	Butler .....84
74.....	Notre Dame .....89
68.....	Northwestern .....65
66.....	Purdue .....68
89.....	Illinois .....82
85.....	Minnesota .....64
75.....	Iowa .....79
76.....	DePaul .....66
66.....	Minnesota .....69
82.....	Michigan State .....74
93.....	Wisconsin .....87
83.....	Ohio State .....93
88.....	Ohio State .....83
95.....	Michigan .....88
109.....	Purdue .....95
96.....	Illinois .....86
75.....	Michigan State .....72

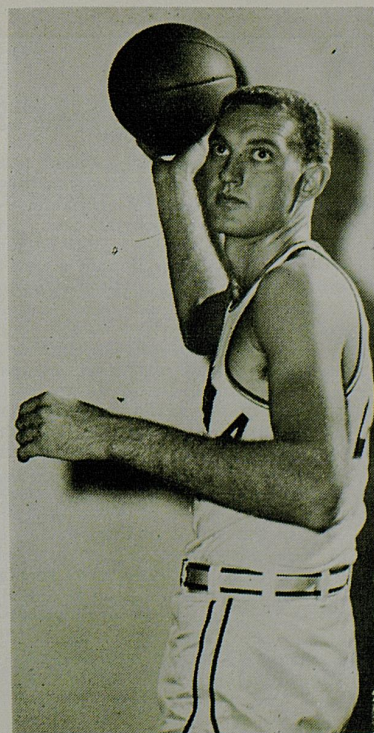
(WON 12 — LOST 10)

## INDIANA SEASON RESUME

Indiana's Hurryin Hoosiers climaxed an almost incredible uphill struggle by downing Michigan State at East Lansing 75-72 last Saturday to win the Big Ten Championship and a place in the National Collegiate Tournament field.

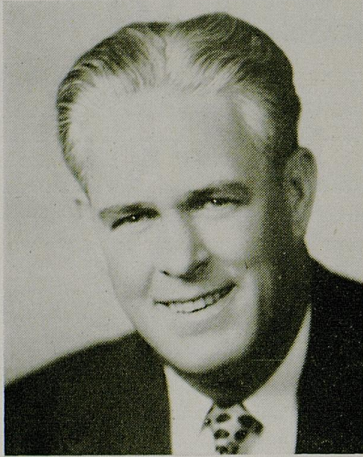
The Hoosiers, although defending co-champions of the conference, were virtually written off as contenders after dropping six of seven pre-conference games and sinking to sixth place in league standings. Emergence of standout guards Sam Gee and Bob Wilkinson and forwards Pete Obremeskey, Jerry Thompson and Frank Radovich to go with All-American center Archie Dees, who won the Big Ten scoring championship for the second year in a row, got the Hoosiers off on a torrid stretch drive.

In the stretch, Indiana won seven of eight games, its last five in a row, and four of the seven victories came of foreign courts. The Hoosiers never held first place undisputed until season's end and didn't get over the .500 mark for the season until next to last game. Coach Branch McCracken, finishing at the top of the league for the fourth time in the last six seasons, sends his fourth Hoosier team into the Tournament with a brilliant Tournament record. In three tries, Indiana has won two National Collegiate titles, 1940 and 1953, and was taken out in 1954 on a one point loss.



ARCHIE DEES  
Center

# NOTRE DAME—*Fighting Irish*



**COACH JOHN JORDAN**

John Joseph (Johnny) Jordan, who for the fourth time in the seven years he has been head coach of basketball at Notre Dame has led his team into the NCAA Tournament, is in his 20th year as a cage mentor. For his tour with the Irish, he shows a won-lost record of 123-55. Jordan's background includes a highly successful stint at Chicago's Mt. Carmel High and Loyola University before returning to his alma mater in 1951.

## SEASON RECORD

Notre Dame	Opponent
82.....	St. Ambrose .....63
75.....	Wisconsin .....53
69.....	Nebraska .....56
64.....	Marquette .....78
82.....	Loyola .....63
72.....	Michigan State .....79
HOOSIER CLASSIC	
68.....	Purdue .....61
89.....	Indiana .....74
71.....	Northwestern .....66
83.....	Butler .....72
94.....	Valparaiso .....69
79.....	De Paul .....61
83.....	Louisville .....94
81.....	Illinois .....67
73.....	Louisville .....53
70.....	Bradley .....81
71.....	Canisius .....59
98.....	Air Force Academy .....70
106.....	Marquette .....74
90.....	Butler .....81
89.....	North Carolina .....70
93.....	New York U. ....77
85.....	Navy .....63
86.....	Holy Cross .....58
102.....	Detroit .....96
75.....	De Paul .....71
NCAA TOURNAMENT	
94.....	Tennessee Tech .....61
(WON 23, LOST 4)	

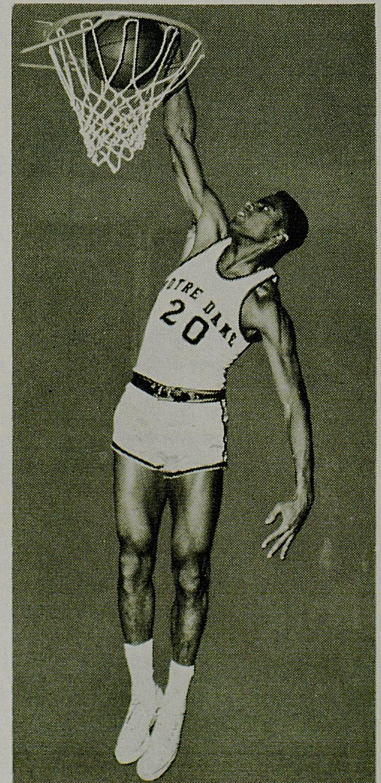
## NOTRE DAME SEASON RESUME

More or less, the present season was a winning one for Notre Dame just about all the way as they posted a 23-4 record and ranked eighth in the final AP rankings. After a disappointing early setback at the hands of Michigan State, the Fighting Irish swept to 18 victories in their last 20 regular season starts, including the last 10 in a row. Coach Johnny Jordan's men gained the regional playoffs without pressure as they showed great class in the face of overconfidence to down eligibility-weakened Tennessee Tech, 94-61, in a first round NCAA test at Evanston Tuesday night.

Against Big Ten competition, which they meet again as they encounter league champion Indiana in the first game of the Midwest Regional, Notre Dame shows five wins out of six. They took the measure of the Hoosiers, 89-74 in the finals of the Hoosier Classic at Indianapolis during the Christmas holidays.

Possibly the high spot of the season occurred as the Irish trimmed defending national champion North Carolina, 89-70, in a Chicago Stadium match on the same night Kentucky was upset by unheralded Loyola.

In the matter of individual point-getting, it was a continual story of Tom Hawkins; Co-Captain John McCarthy; and sometimes Co-Captain Bobby Devine. Hawkins posted a new Notre Dame one season total of 684 points while attaining high point man honors in 19 of Notre Dame's games and tying for the honor in two others. His best effort, point-wise, came against the Air Force Academy when he bucketed 43 points. Rather significant is the fact that the Irish have three men who have topped 1,000 points. In two seasons, Hawkins has 1,260, and for three years McCarthy has 1,062 and Devine 1,022.



**TOM HAWKINS**  
Forward

---

*the tip off ... do your banking at*

# FIRST NATIONAL BANK AND TRUST COMPANY

LEXINGTON'S LARGEST AND OLDEST BANK

---

100% Air-Conditioned  
On the way downtown

FREE TV  
EVERY ROOM

## THE KENTUCKIAN HOTEL

GOOD FOOD

REASONABLY PRICED

— FREE PARKING DECK WITH DIRECT ACCESS TO LOBBY —

## THE LITTLE INN RESTAURANT AND COCKTAIL LOUNGE

*Featuring*

Charcoal Broiled Steaks

HAROLD GLASS, Owner

5 Minutes From Downtown

Route 60 - Winchester Rd.

## Taylor Tire Company

Incorporated

Tires — Batteries — Brakes — Clutch — Starter — Lights  
Ignition — Wheel Alignment — Sales and Service

24 Hour  Service

"BUDGET TERMS"  
Phone 2-7127

Vine at Southeastern

Lexington, Ky.

# KENTUCKY—Wildcats



COACH ADOLPH RUPP

Colorful and successful Adolph Rupp, the basketball baron of the bluegrass, takes a 28-year record of 580 wins out of 683 starts into national tournament play and will be striving for an unprecedented fourth NCAA title as his Wildcats make a record 10th appearance in the national eliminations. The inimitable Rupp this season guided Kentucky to a 19th Southeastern championship and a ninth place finish in the AP poll.

## SEASON RECORD

Kentucky	Opponent
78.....	Duke .....74
61.....	Ohio State .....54
85***.....	Temple .....83
62.....	Maryland .....71
73.....	St. Louis .....60
64.....	S. M. U. ....65

## U.K. INVITATIONAL TOURNAMENT

70.....	West Virginia .....77
78.....	Minnesota .....58
92.....	Utah State .....64
75.....	Loyola (Chicago) .....42
76.....	Georgia Tech .....60
86.....	Vanderbilt .....81
97.....	L. S. U. ....52
86.....	Tulane .....50
77.....	Tennessee .....68
52.....	Georgia Tech .....71
74.....	Georgia .....55
78.....	Florida .....56
96.....	Mississippi .....65
72.....	Mississippi St. ....62
56.....	Loyola (Chicago) .....57
65.....	Vanderbilt .....61
45*.....	Alabama .....43
63.....	Auburn .....64
77.....	Tennessee .....66

\*\*\* Three overtimes.

\* One overtime.

(WON 19 — LOST 6)

## KENTUCKY SEASON RESUME

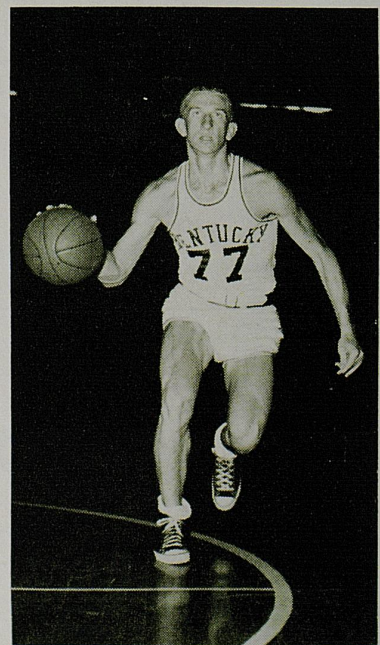
It was a strange season, this cage year of 1957-58, that saw the perennially powerful Kentucky Wildcats of wily Adolph Rupp march to a record 19th title in their own Southeastern bailiwick and gain admission to the national title playoffs an unprecedented tenth time.

The final accounting of the bluegrass quintet's 54th year of basketball reads 19 wins and six defeats—Kentucky's poorest showing in 15 years. And yet the highly-respected Wildcats are in the running again in quest of a fourth national collegiate championship, a goal out of the reach of any other team in the country.

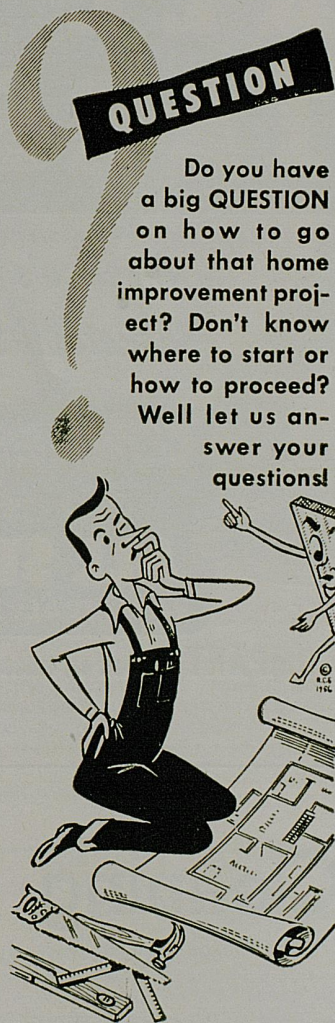
Before the current campaign opened, the rarely-pessimistic Rupp freely predicted that his 1958 club "could" be an improvement over last year's unit that waltzed to the conference title and third place in the national rankings on a 23-5 record. But the nation's winningest cage mentor added the sobering thought (later proven a remarkable insight) that the difficulty of the schedule might prevent the posting of a better won-lost record.

How good a prophet he was is illustrated by the Wildcats' showing this season. Long on experience but short on speed, the Ruppmen in the first 20 days of December tackled eight national powers and showed themselves worthy of high national ranking as they won over Duke, Ohio State, Temple, St. Louis and Minnesota. Setbacks, two of which were classed as upsets, were at the hands of Maryland, Southern Methodist and West Virginia.

Moving into the conference portion of their rugged schedule, Kentucky seemed headed for another clean sweep despite an obvious overall improvement in the calibre of competition. Then they ran into old nemesis Georgia Tech in late January. The Engineers pulled off an upset which seemed to encourage the Wildcats' remaining foes. With the word out that "Kentucky can be had," the competition became increasingly tough with the result that the title was not sewed up until the final game of the season.



VERNON HATTON  
Guard



Do you have a big **QUESTION** on how to go about that home improvement project? Don't know where to start or how to proceed? Well let us answer your questions!

Maintains a home improvement department that will be glad to help you in every phase of the work. See us now. There is no obligation.

**SAVAGE**

Home Improvement Co.

1016 West Main

Phones 4-1831 — 2-5858

*"Welcome Tourney Visitors"*

You're Always Welcome At

*Begley's*

Walgreen Agency Drug Stores  
In Lexington  
Serving the  
Best In Drug Store Needs

- 1198 NORTH LIMESTONE
- 878 EAST HIGH STREET
- 404 SOUTHLAND DRIVE

We Invite You To Meet  
Your Friends In Our Drug  
Stores While In Lexington

The New Way is

*Lusterway*

*"dry" dry cleaning*

- NO-SHRINK PROCESS
- BRIGHTENS COLORS
- SOFTEN TEXTURE
- SAFE AND GENTLE
- LINT-FREE AND CLING-FREE

Exclusive

At

**BECKER**

Louderers — Cleaners

6 Convenient Locations

S. Lime at Euclid

S. Lime at Vine

4th & Broadway

Walton & Aurora

Southland Shopping Center

High & Euclid

# Now **2** great **ALL STARS**

## **ALL STAR OXFORD**

Newest member of the All Star family incorporating features never offered before in a low-cut shoe.

## **REGULAR ALL STAR**

First on the courts for over 40 years — and still the world's outstanding basketball shoe.



*America's No. 1  
Basketball Shoes*

**CONVERSE**  
*Chuck Taylor*  
**ALL STAR**  
**BASKETBALL SHOES**

CONVERSE RUBBER COMPANY MALDEN 48, MASSACHUSETTS

Laundry

Dry Cleaning

# DeBoor

265 EUCLID AVE.  
PHONE 3-0235

880 E. HIGH ST.  
PHONE 2-7046

1966 HARRODSBURG PIKE  
PHONE 5-1488



# MIAMI-Redskins



COACH DICK SHRIDER

A 34-year-old Ohio native whose background is crammed with collegiate play at three universities and professional experience with the New York Knickerbockers, Coach Dick Shrider has achieved amazing success in his yearling campaign of college coaching. He not only guided the Miami Redskins to an impressive 18-7 record, including their surprising upset of Pitt, but made a clean sweep to the Mid-American title with 12 straight wins.

## SEASON RECORD

Miami	Opponent
66	Purdue .....79
70	Bowling Green .....64
97	Heidelberg .....56
63	Dayton .....59
66	Duquesne .....77
66	George Washington .....64
106	Marshall .....97
75	Illinois .....93
63	Toledo .....50
65	Xavier .....78
95	Western Michigan .....68
75	Ohio University .....66
76	Bowling Green .....74
56	Kent State .....41
59	Cincinnati .....79
95	Western Michigan .....75
62	Dayton .....64
77	Iowa .....82
69	De Paul .....64
86	Ohio University .....72
73	Toledo .....69
82	Marshall .....73
50	Kent State .....48
89	Xavier .....79

## NCAA TOURNAMENT

82	Pittsburgh .....77
----	--------------------

(WON 18—LOST 7)

## MIAMI SEASON RESUME

Can the Redskins do it again?

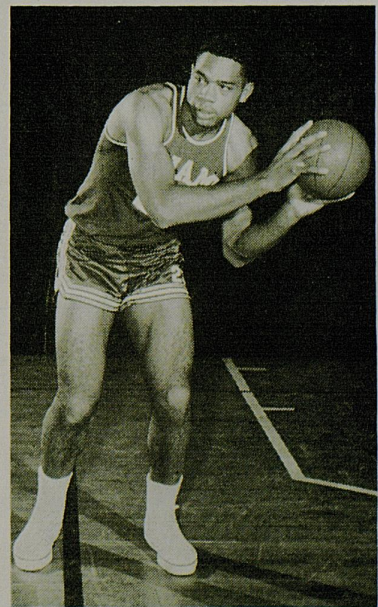
Out of the unheralded category and stamped with the "Cinderella team" tag following their surprising upset of mighty Pittsburgh, 82-77, at Evanston Tuesday night, Miami's Mid-American champions enter the NCAA regionals a dedicated team determined to down powerful Kentucky and continue their drive toward the national title.

Few of the so-called experts foresaw the Redskins' amazing triumph over a Pitt team blessed with All-America Don Hennon, but Coach Dick Shrider's charges turned the trick with tremendous team effort that cannot be minimized in figuring their chances to top the Wildcats.

Coach Shrider, in his first year as a college coach, has brought the team a long way since an opening loss to Purdue and Miami has never looked better than in its last seven games. Riding the crest of a seven-game winning streak, they won the Mid-American Conference title on a perfect, 12-0 record and achieved their first NCAA Tournament victory in four tries by beating Pittsburgh.

With a veteran studded team that includes high scoring Wayne Embry and playmaker Johnny Powell, Miami played the toughest schedule in the school's history to finish with a 17-7 regular season record. Concentrating on conference play, the Redskins made history by going undefeated in 12 conference tests and showed potential despite defeat in meetings with toughies like Cincinnati, Duquesne and Big Ten powers.

Prior to this year, the Redskins have been unable to get past the first round in NCAA play. Notre Dame eliminated them last year, in 1953 they lost to De Paul and in 1955 it was Marquette who topped them in a preliminary playoff at Lexington.



WAYNE EMBRY  
Center



# Central Kentucky Sport Fans Look for Top Sports Coverage

## INDIANA — Complete roster on page 27

HOOSIERS	FG	FT	PF	TP
43 Obremsky, Pete (f)				
45 Thompson, Jerry (f)				
22 Dees, Archie (c)				
15 Gee, Sam (g)				
44 Wilkinson, Robert (g)				
20 Schlegelmilch, Allen (g)				
24 Ball, Ray (f)				
30 Aldridge, Lee (f-c)				
31 Hinds, Jim (f)				
33 Radovich, Frank (f-c)				
42 Balch, Bill (f)				
TOTALS				

## NOTRE DAME — Complete roster on page 23

White Green	IRISH	FG	FT	PF	TP
10	11 McCarthy, John (f)				
20	21 Hawkins, Thomas (f)				
22	23 Graney, Michael (c)				
4	5 Duffy, Eugene (g)				
30	31 Devine, Robert (g)				
12	13 Ayotte, Lee (g-f)				
14	15 Ireland, Michael (c)				
32	33 Bekelja, Michael (f-c)				
34	35 Bradtke, Robert (g)				
42	43 Williams, James (c-f)				
50	51 Reinhart, Thomas (c-f)				
52	53 Gleason, Edward (g)				
TOTALS					



# THE PHOENIX

“Lexington’s Largest”

OFFICIAL HEADQUARTERS OF

Make It Your Headquarters

Look to the Lexington Newspapers  
Coverage in this area



**KENTUCKY — Complete roster on page 29**

White	Blue	WILDCATS	FG	FT	PF	TP
24	25	Cox, Johnny (f)				
32	31	Crigler, John (f)				
34	35	Beck, Ed (c)				
50	51	Smith, Adrian (g)				
52	53	Hatton, Vernon (g)				
00	5	Smith, Bill (f-c)				
4	3	Ross, Harold (g)				
10	11	Collinsworth, Lincoln (g)				
12	33	Cassady, Bill (g-f)				
14	15	Johnson, Phil (c-f)				
20	43	Howe, Dick (c-f)				
40	41	Adkins, Earl (g)				
44	45	Hughes, Lowell (g)				
54	55	Mills, Don (c)				
TOTALS						

**MIAMI — Complete roster on page 25**

REDSKINS	FG	FT	PF	TP
15	Wingard, Eddie (f)			
22	Thomas, Jim (f)			
23	Embry, Wayne (c)			
5	Hamilton, Jim (g)			
10	Powell, John (g)			
3	Miller, Bob (g)			
4	Crist, Larry (g)			
11	Babbs, Ken (f)			
14	Brown, Bill (f)			
20	Higgins, Jerry (f-g)			
21	Rowan, Herb (f)			
TOTALS				

**ENIX HOTEL**

"Largest and Finest"

HEADQUARTERS OF N.C.A.A. TOURNAMENT

our Headquarters Too!



# Turf Catering Co.

"SERVING THE COLISEUM"

DELICIOUS HOT DOGS — COLD DRINKS

ICE CREAM — POPCORN — PEANUTS

YOUR PATRONAGE KINDLY SOLICITED

*Enjoy Your Lexington Visit At The*

## *Ranch Motel*

EASTERN CITY LIMITS — U. S. 60

1133 Winchester Road

Phone 2-0777

Lexington, Kentucky

ROBERT LUTES—OWNER

WILLARD TRAYNER, MGR.

# Lexington Yellow Cab Co.

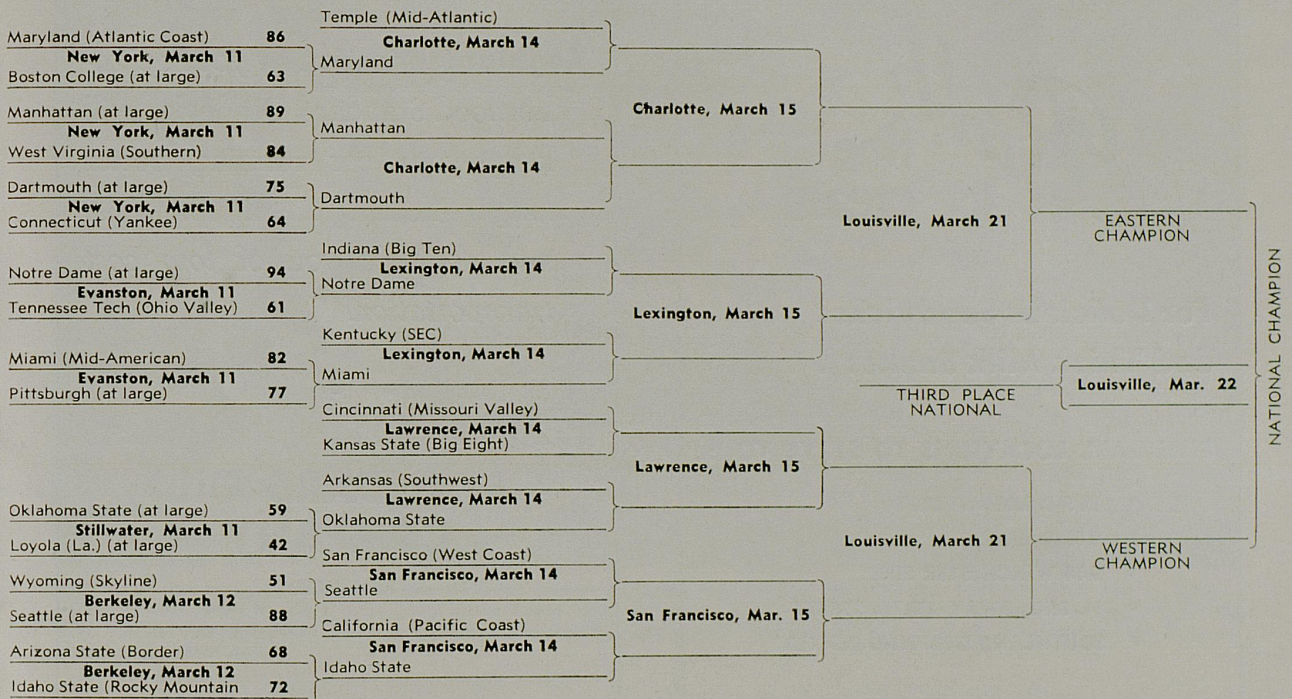
Inc.

ALL  
RADIO CABS

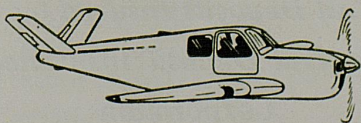
**Dial 2-2230**

ALL  
RADIO CABS

1958 NATIONAL COLLEGIATE BASKETBALL BRACKET

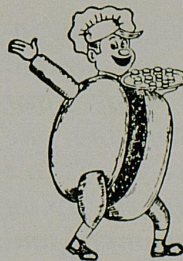


Make your own schedule  
as you travel by  
**BEECHCRAFT CHARTER**  
*Single and Twin Engine*



**Blue Grass Airmotive, Inc.**

Blue Grass Field                      Lexington, Ky.  
PHONE 4-5234



**JERRY'S  
DRIVE IN**

There's A  
Jerry's  
Near You

**LEXINGTON—**

North Broadway & Beltline Highway  
357 S. Limestone Street  
1127 Winchester Rd.  
E. Main at Walton Avenue

**LOUISVILLE—**

Bardstown Rd. & Buechel Bypass  
5215 New Cut Road  
South Seventh & Arcade St.

**WINCHESTER, KY.—NEW ALBANY, IND.**

# Ball fine ice cream

**For Delicious Sandwiches  
and Thick Milk Shakes . . .**

**FIVE BALL LOCATIONS TO SERVE YOU:**

- 895 E. HIGH STREET
- 816 S. LIME
- 944 WINCHESTER PIKE
- N. BROADWAY AT 7th STREET
- SOUTHLAND SHOPPING CENTER

**Regular** lubrication by your neighborhood Standard Oil dealer will keep your car running better *longer*—holding down repair bills and assuring you of *low cost transportation!*

•  
**STANDARD OIL  
COMPANY**

KENTUCKY

*We welcome to Lexington all interested basketball tournament fans. We sincerely hope your visit will be a pleasurable one and while here make Hymson's Tots & Teens your shopping headquarters for women and children's wearing apparel.*



**Hymson's**  
**Tots & Teens**

**3% INTEREST ON ALL  
SAVINGS ACCOUNTS**

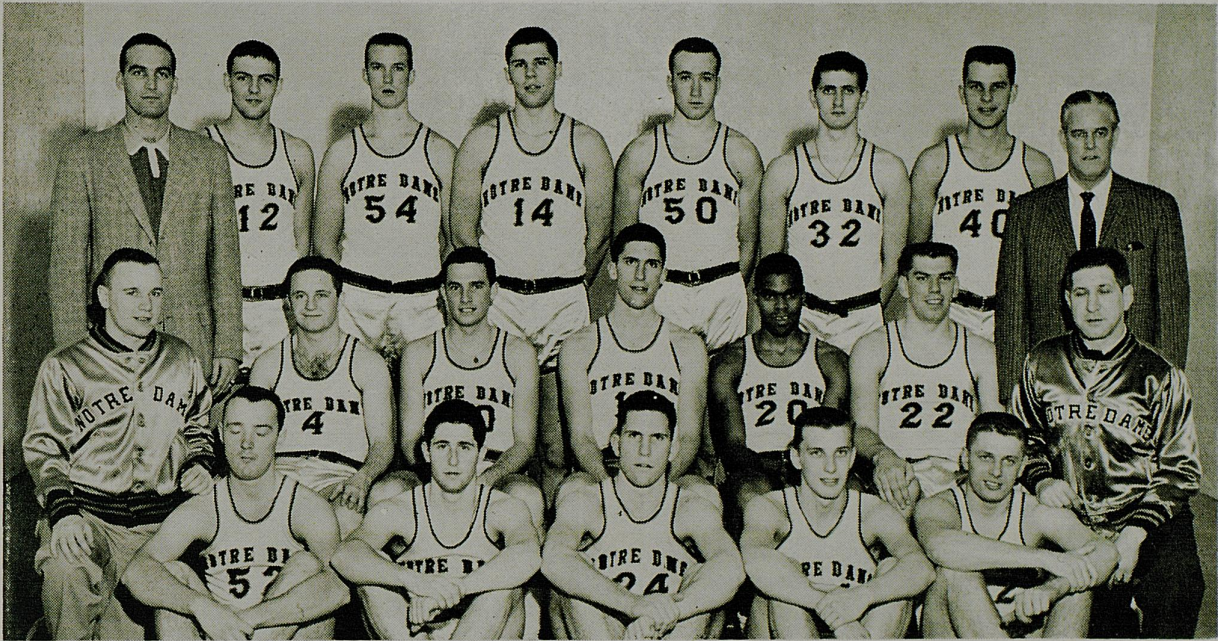


*All Deposits Insured by  
Federal Deposit Insurance  
Corporation*



**CENTRAL BANK**

Lexington, Kentucky



FIRST ROW (left to right)—Ed Gleason, Don McGann, Emmett McCarthy, Bob Bradtke, Jim Williams. SECOND ROW (left to right)—Student manager Walt Huurman, Gene Duffy, Bobby Devine, John McCarthy, Tom Hawkins, Mike Graney, Trainer Gene Paszkiet. THIRD ROW (left to right)—Assistant Coach Jim Gibbons, Lee Ayotte, Mike Farrell, Mike Ireland, Tom Reinhart, Mike Bekelja, Bob Skrzycki, Head Coach Johnny Jordan.

## UNIVERSITY OF NOTRE DAME ROSTER

### AT LARGE

White	Green	Name	Pos.	Class	Age	Ht.	Wt.	Ltrs.	Hometown
4	5	Eugene Duffy (g)		Jr.	20	5'7"	150	1	Davenport, Ia.
10	11	John McCarthy (f)		Sr.	21	6'3"	185	2	Chicago, Ill.
12	13	Lee Ayotte (g-f)		Sr.	23	6'4"	215	1	Alpena, Mich.
14	15	Michael Ireland (c)		Jr.	20	6'7"	215	0	Skokie, Ill.
20	21	Thomas Hawkins (f)		Jr.	21	6'5"	205	1	Chicago, Ill.
22	23	Michael Graney (c)		Soph.	19	6'5"	225	0	Chesterton, Ind.
24	25	Emmett McCarthy (f)		Soph.	19	6'3"	195	0	Chicago, Ill.
30	31	Robert Devine (g)		Sr.	22	6'	170	2	Philadelphia, Pa.
32	33	Michael Bekelja (f-c)		Soph.	19	6'4"	195	0	Harrisburg, Pa.
34	35	Robert Bradtke (g)		Soph.	19	6'1"	175	0	Calumet City, Ill.
40	41	Robert Skrzycki (c-f)		Soph.	19	6'5"	195	0	Detroit, Mich.
42	43	James Williams (c-f)		Sr.	20	6'4"	195	0	Danville, Ill.
44	45	Donald McGann (g)		Soph.	19	6'3"	170	0	Joliet, Ill.
50	51	Thomas Reinhart (c-f)		Jr.	20	6'5"	201	0	Minneapolis, Minn.
52	53	Edward Gleason (g)		Sr.	21	6'1"	190	2	Chicago, Ill.
54	55	Michael Farrell (f)		Soph.	19	6'5"	190	0	W. Orange, N. J.

COACH—Johnny Jordan (7 Years—Won 123, Lost 55)

ATHLETIC DIRECTOR—Edward Krause

ASSISTANT COACH—Jim Gibbons

PUBLICITY DIRECTOR—Charles Callahan

TRAINER—Gene Paszkiet

COLORS—Blue and Gold

## **WENNEKER'S SHOES**

153-155 E. Main      Lexington, Ky.

MEN'S — WOMEN'S — BOYS'

*The Store of Champions*

Where you save 25 to 50 per cent  
on all shoes

*Central Kentucky's Finest  
Insurance Agency*

**COMPLETE INSURANCE COVERAGE  
FOR ALL LOSSES**

## **KENTUCKY INSURANCE AGENCY**

1636 North Broadway      Lexington, Ky.

PHONE 5-4930

## **L. L. ROBERTS -- FURNITURE CO.**

**The Home of the Cherry Shop**

**435 W. MAIN ST.**

**LEXINGTON, KY.**

*Drive Out To The*

## **STAR LITE DRIVE IN RESTAURANT**

2401 Nicholasville Road At Stone Road

Try our Col. Sanders Recipe of

**KENTUCKY FRIED CHICKEN**

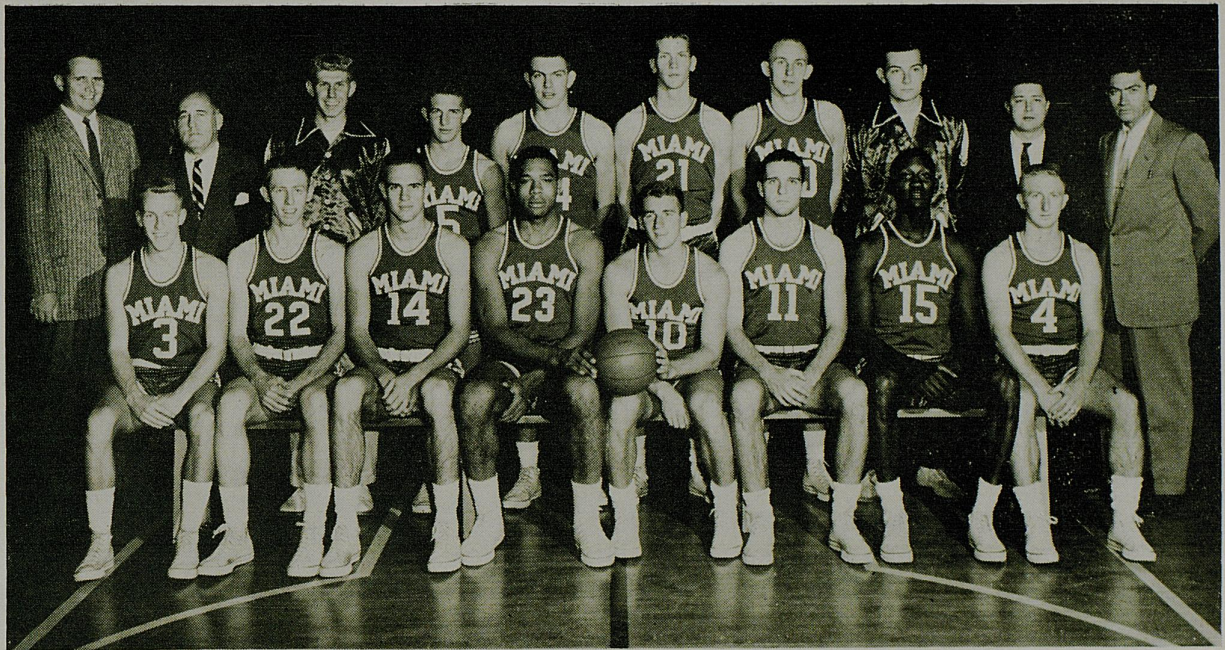
**CURB SERVICE**

**SANDWICHES — SEAFOOD — FOUNTAIN SERVICE**

**DINING ROOM**

**DIAL 7-1957 OR 7-9995 FOR CARRY OUT SERVICE**





SEATED (left to right)—Bob Miller, Jim Thomas, Bill Brown, Wayne Embry, John Powell, Ken Babbs, Ed Wingard, Larry Crist. STANDING (left to right)—Dick Shrider, coach; John Brickels, athletic director; John Buechel, student manager; Jim Hamilton, Ron Puterbaugh (no longer with the team), Herb Rowan, Jerry Higgins, Bob Bader, student manager; Darrell Hedric, assistant coach; Mike Mecca, publicity director.

## MIAMI UNIVERSITY ROSTER

MID-AMERICAN CONFERENCE CHAMPIONS

No.	Name	Pos.	Class	Age	Ht.	Wt.	Hometown
3	*Bob Miller (g)		Jr.	20	5'11"	155	Scotia, N. Y.
4	*Larry Crist (g)		Jr.	19	5'8"	155	Zanesville, Ohio
5	Jim Hamilton (g)		Soph.	19	5'8"	150	Coshocton, Ohio
10	*John Powell (g)		Sr.	21	6'	180	Franklin, Ohio
11	Ken Babbs (f)		Sr.	21	6'3"	185	Mentor, Ohio
14	*Bill Brown (f)		Jr.	20	6'6"	185	Columbus, Ohio
15	*Eddie Wingard (f)		Jr.	20	6'6"	185	Elyria, Ohio
20	Jerry Higgins (f-g)		Soph.	19	6'3"	195	Portsmouth, Ohio
21	Herb Rowan (f)		Soph.	19	6'4"	185	Williamsburg, Ohio
22	*Jim Thomas (f)		Jr.	20	6'3"	165	Gallipolis, Ohio
23	*Wayne Embry (c)		Sr.	21	6'8"	225	Springfield, Ohio

\* Denotes lettermen.

COACH—Richard Shrider (1 Year—Won 18, Lost 7)

ATHLETIC DIRECTOR—John Brickels

ASST. COACHES—Darrell Hedric and Carmen Cozza

PUBLICITY DIRECTOR—Mike Mecca

TRAINER—E. J. Colville

COLORS—Red and White

R

**S A G E S E R**  
**DRUGS**  
in  
**SOUTHLAND**

**PHARMACY**  
at  
**SHORT & MILL**

R

"ASK YOUR DOCTOR"

THE STORE WHERE QUALITY LEADS

*Standard* furniture company

221 East Main Street

Lexington, Kentucky

PRICES TO FIT EVERY BUDGET

**CROPPER'S**

**60**

*Minute Cleaning*

**SAME DAY LAUNDRY**

*Plenty of Parking Space*

*606 So. Broadway*

**PHONE 4-4454**

SUB STATION  
142 N. LIME

PHONE  
5-5187

**Bank of Commerce**

*Three Convenient Locations*

**MAIN AT CHEAPSIDE**

**ASHLAND BRANCH**  
716 EUCLID AVE.

**LAFAYETTE BRANCH**  
1975 HARRODSBURG RD.

MEMBER

FEDERAL DEPOSIT INSURANCE  
CORPORATION

MEMBER

FEDERAL RESERVE SYSTEM

THE BANK OF FRIENDLY SERVICE



FIRST ROW (left to right)—Bill Balch, Jerry Thompson, Archie Dees, Frank Radovich, Norb Witte, Lee Aldridge. SECOND ROW (left to right)—Bode Hill, Sam Gee, Gene Flowers, Ray Ball, Bob Wilkinson. THIRD ROW (left to right)—Coach Branch McCracken, Jim Hinds, Glen Butte, Senior Manager Bill Stewart, Pete Obrebsky, Allen Schlegelmilch, Assistant Coach Ernie Andres.

## INDIANA UNIVERSITY ROSTER

### BIG TEN CHAMPIONS

No.	Name	Pos.	Class	Age	Ht.	Wt.	Ltrs.	Hometown
15	Sam Gee	(g)	Sr.	20	6'1"	170	2	Washington, Ind.
20	Allen Schlegelmilch	(g)	Soph.	19	6'1"	190	0	Monticello, Ind.
22	Archie Dees	(c)	Sr.	21	6'8"	205	2	Mt. Carmel, Ill.
24	Ray Ball	(f)	Sr.	23	6'3"	190	1	Elkhart, Ind.
30	Lee Aldridge	(f-c)	Jr.	20	6'6"	195	1	Switz City, Ind.
31	Jim Hinds	(f)	Jr.	20	6'4½"	195	0	Muncie, Ind.
33	Frank Radovich	(f-c)	Soph.	19	6'7½"	215	0	Hammond, Ind.
42	Bill Balch	(f)	Jr.	20	6'5"	181	1	Crawfordsville, Ind.
43	Pete Obrebsky	(f)	Sr.	21	6'3"	185	2	Jeffersonville, Ind.
44	Robert Wilkinson	(g)	Soph.	19	6'	170	0	LaPorte, Ind.
45	Jerry Thompson	(f)	Sr.	23	6'4½"	184	2	South Bend, Ind.

COACH—Branch McCracken (17 Years—Won 263, Lost 107)

ATHLETIC DIRECTOR—Frank Allen

ASST. COACHES—Ernie Andres and Lou Watson

PUBLICITY DIRECTOR—Tom Miller

COLORS—Red and White

Welcome To Lexington . . .

. . . "You All" Come Back

**GENERAL TELEPHONE CO. OF KENTUCKY**

**BLUE GRASS LODGE NO. 4  
FRATERNAL ORDER OF POLICE**

*"The Only National Police Organization"*

Read "Badge 'N Blue"—published monthly at Lexington, Ky.

Subscription Rates \$1.00 Per Year P.O. Box 372

"DIRECTLY ACROSS FROM PHOENIX HOTEL"

Today, Ben Snyder is one of Lexington's most modern, most complete department stores. A staff of courteous and experienced people are ready to serve you.

Pay cash, pay less



*Lexington  
Store Hours:*

**MONDAYS**  
9 a.m.-9 p.m.

**TUES.-SAT.**  
9 a.m.-5 p.m.

**PARKING — STORAGE**

**OPEN 24 HOURS**

**Lafayette-Phoenix Garage, Inc.**

**204 E. MAIN ST.**

**GAS — OIL**

**WASHING — GREASING**



SEATED, L to R: Head Coach Adolph Rupp, Harold Ross, Bill Cassady, E. A. Couch (no longer on team), Adrian Smith, Lincoln Collinsworth, John Crigler, Earl Adkins, Asst. Coach Harry Lancaster. STANDING, L to R: Assistant Coach Bill Wireman, Vernon Hatton, Johnny Cox, Dick Howe, Phil Johnson, Ed Beck, Don Mills, Bill Smith, Manager Jay Atkerson.

## UNIVERSITY OF KENTUCKY ROSTER

### SOUTHEASTERN CONFERENCE CHAMPIONS

White	Blue	Name	Pos.	Class	Ltrs.	Age	Ht.	Wt.	Hometown
00	5	Bill Smith (f-c)		Sr.	2	20	6'5"	203	Walton, Ky.
4	3	Harold Ross (g)		Sr.	2	20	6'2"	180	Hickman, Ky.
10	11	Lincoln Collinsworth (g)		Sr.	2	20	6'3"	185	Salyersville, Ky.
12	33	Bill Cassady (g-f)		Sr.	2	20	6'2"	191	Inez, Ky.
14	15	Phil Johnson (c-f)		Jr.	1	21	6'6"	190	Lexington, Ky.
20	43	Dick Howe (c-f)		Jr.	1	20	6'5"	208	Carbondale, Ill.
24	25	Johnny Cox (f)		Jr.	1	20	6'4"	185	Hazard, Ky.
32	31	John Crigler (f)		Sr.	2	20	6'3"	180	Hebron, Ky.
34	35	Ed Beck (c)		Sr.	2	20	6'7"	188	Ft. Valley, Ga.
40	41	Earl Adkins (g)		Sr.	2	23	6'4"	180	Ashland, Ky.
44	45	Lowell Hughes (g)		Soph.	N	18	6'	175	Prestonsburg, Ky.
50	51	Adrian Smith (g)		Sr.	1	19	6'	178	Farmington, Ky.
52	53	Vernon Hatton (g)		Sr.	2	20	6'3"	188	Lexington, Ky.
54	55	Don Mills (c)		Soph.	N	18	6'7"	190	Berea, Ky.

COACH—Adolph Rupp (28 Years — Won 580, Lost 103)

ATHLETIC DIRECTOR—Bernie Shively

ASSISTANT COACHES—Harry Lancaster and Bill Wireman

PUBLICITY DIRECTOR—Ken Kuhn

TRAINER—John Payne

EQUIP. MGR.—Buster Brown

STUDENT MANAGER—Jay Atkerson

COLORS—Blue and White

The Best of Dairy

PRODUCTS

## Dixie Bell Dairy Company



315 North Limestone Street  
LEXINGTON, KY.

## ECTON SUPPLY CO.

International Harvester  
Farm Machinery

1060 W. High

Phone 5-5727

LEXINGTON, KY.

PAINT

HARDWARE

McCULLOUGH CHAIN SAWS

**L**EXINGTON PHOTO ENGRAVING COMPANY  
223 WEST SHORT STREET  
*Lexington, Kentucky*  
TEL 5-5015



SINCE 1904

## CASSELLS PHARMACY

Hospital, Physicians and Veterinary Supplies

140 N. UPPER

DIAL 2-3434

WE DELIVER

WE FILL ALL DOCTOR'S PRESCRIPTIONS

## BROCK-McVEY

WHOLESALE ONLY

*Plumbing, Heating, Refrigeration & Electrical Supplies*

Lexington, Ky.

Frankfort, Ky.

Maysville, Ky.

CHARCOAL  
BROILED  
STEAKS  
—  
LOBSTERS



PRIME RIB  
CART  
—  
LOBSTERS  
—  
129 E. Main



Courtesy of . . .

**Power Oil Company, Inc.**

S H E L L  
D I S T R I B U T O R S

LEXINGTON, KENTUCKY

Buy with Confidence at . . .

*Stewart's*

LEXINGTON AND  
LOUISVILLE

---

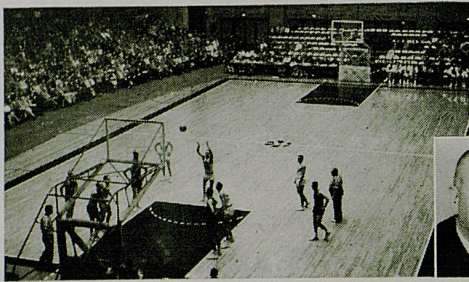
*Soon . . . a new name in the air!*

Our 1300 location remains unchanged, but we will soon be changing our call letters. Watch and listen for the new name in the air!

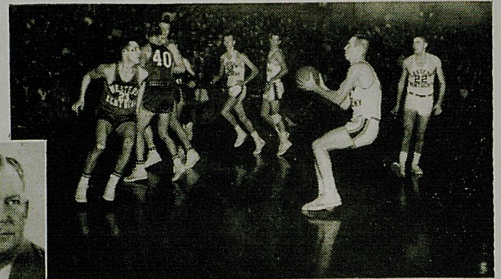
**WLEX-radio 1300 on your dial**

LEXINGTON'S NUMBER ONE SPORTS STATION

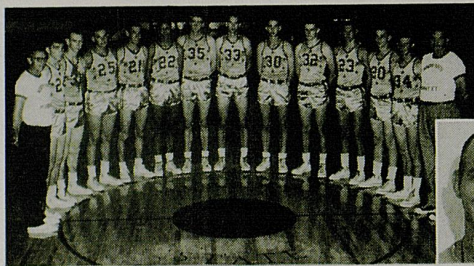
---



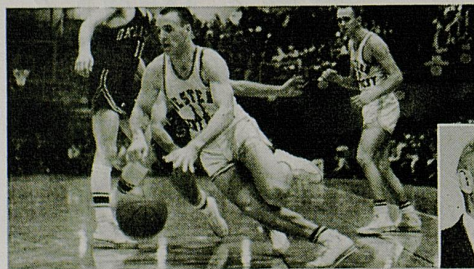
**University of Kentucky, Lexington** • Coach Adolph Rupp says, "At Kentucky I specified that Seal-O-San must be used. I've recommended it many times to other coaches."



**Eastern Kentucky State College, Richmond** • "Seal-O-San does a wonderful job in improving the appearance of a court, as well as protecting it," says Paul S. McBrayer.



**Murray State College, Murray** • Coach Rex Alexander says, "Seal-O-San provides good traction and a lasting finish to our gym floor. It's easy to keep clean, too."



**Western Kentucky State College, Bowling Green** • "I have been using Seal-O-San since I started coaching here thirty-six years ago," say Coach E. A. Diddle.



**Morehead State College, Morehead** • Head coach Bob Laughlin says, "I found that Seal-O-San keeps our floors looking good and makes a safe, nonslippery surface."

## Read why these five Kentucky schools use Seal-O-San.

Hundreds of coaches and school officials in Kentucky and all over the country prefer Seal-O-San gym floor finish. It provides a nonslippery surface that is durable and glare-free. It is easy to care for and reduces maintenance costs. Most important, Seal-O-San is resilient enough to give a player's foot the "extra spring" needed for fast action. Specify Seal-O-San the next time you refinish your gym floor. Write today for more information.

**HUNTINGTON LABORATORIES**  
INCORPORATED

Huntington, Indiana • Philadelphia 35, Pennsylvania • Toronto 2, Ontario

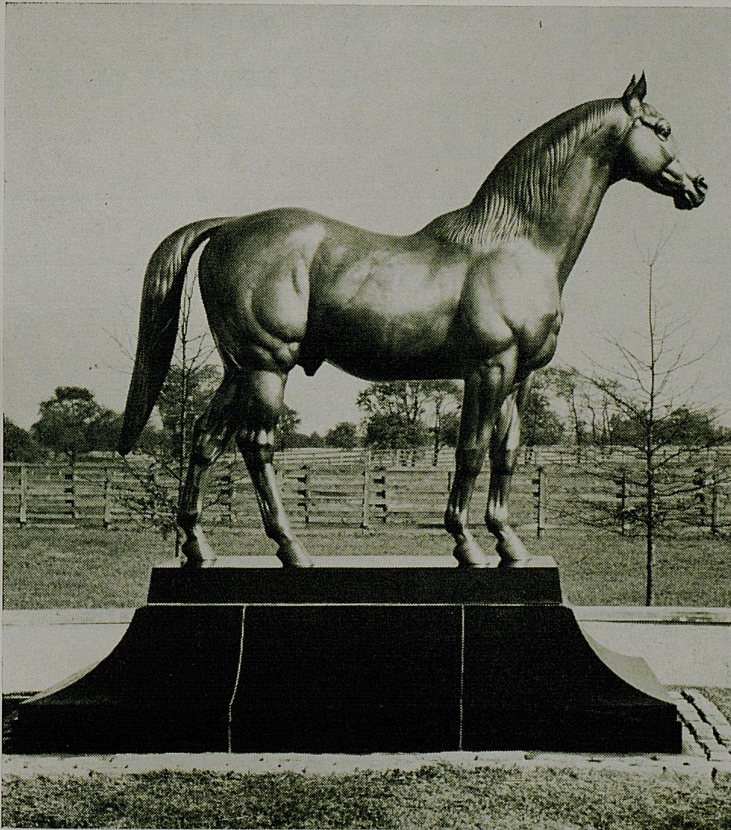
**ARNOLD W. STEINBRENNER**  
400 Holliday Road  
Lexington, Kentucky

**JAMES HENDRIXON**  
418 Norway Avenue  
Huntington, West Virginia

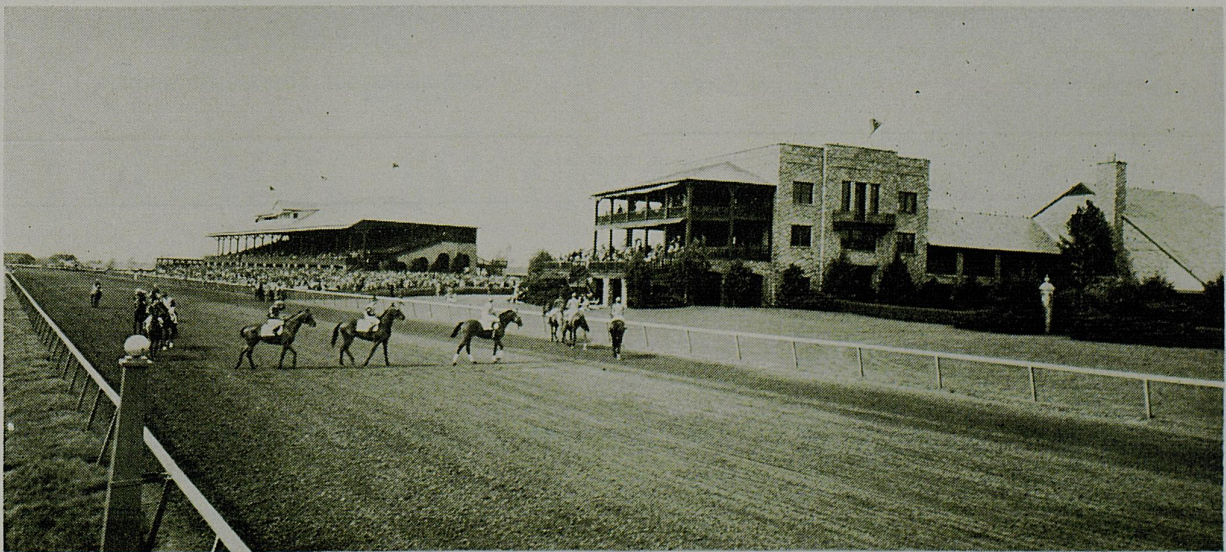
# HUNTINGTON



# LEXINGTON—KINGDOM OF THE HORSE



CAPITAL CITY of the famed Bluegrass region of Kentucky, Lexington is renowned as the world's largest loose leaf tobacco market and world famous as kingdom of the thoroughbred horse industry. Surrounding the City of Lexington are many thousands of acres of gently rolling plains dotted with elaborate breeding establishments where many of the famous names of the "Sport of Kings" were foaled and roamed in their yearling days. Most of the horse farms are open to visitors wishing to drive through the beautiful grounds and inspect the immaculate stallion barns. One of the top attractions is Calumet Farm, three miles from Lexington, where may be seen such famed thoroughbreds as Citation, Coaltown, Ponder, and Whirlaway. The celebrated Man O' War, who died in 1947, is remembered by a \$50,000 bronze statue (pictured at the left) which stands over his grave at Faraway Farm a few miles north of the city. Almost as many visitors see the statue daily as did the great horse it honors. Champions and near champions of the turf world also may be seen at Keeneland Race Course (below), site of outstanding racing in fall and spring. The Lexington Chamber of Commerce can provide maps showing the location of these and numerous other outstanding attractions of historical interest.



## **Bradley's Drug Store**

Opposite Lafayette Hotel

PHONE 4-9140                      LEXINGTON, KY.  
201 EAST MAIN

*Welcome Basketball Fans*

## **York Lexington Company**

230 E. Main Street

**YOUR HOTPOINT DEALER**  
PHONE 2-7544

## **Ecklar-Moore Express Inc.**

*"Through The Heart of the Blue Grass"*

Phone 4-2373—3-0988

**CALL US FOR EFFICIENT  
AND FAST SERVICE**

Compliments of

## **Dixie McKinley**

CADILLAC

434 E. VINE

LEXINGTON, KY.

## **CARPENTER-WARREN Insurance Agency**

AUTOMOBILE — FIRE — BURGLARY

SURETY BONDS  
WORKMEN'S COMPENSATION

*"We Pay Cash for your Ashes"*

143 N. UPPER ST.

PHONE 2-4155

## **PLUMBING CARROLL MURPHY**

DIAL 3-0241

*"Repair Work a Speciality"*

OFFICE 122 W. EUCLID

RESIDENCE 535 ROSEMONT GARDEN

## **The Smith-Watkins Company, Inc.**

The Oldest Macgregor Dealer  
in Central Kentucky

FOOTBALL — BASKETBALL  
BASEBALL — TENNIS & TRACK

TWO LOCATIONS

238 E. Main                      Phone 4-2535  
420 Southern U-Pass              Phone 7-3415

## **Lexington Glass Company**

*Glass For Every Purpose*

867 Angliana Avenue  
LEXINGTON, KENTUCKY

PHONE 5-3010

All 1957-58 Kentucky Games  
AND THE  
N.C.A.A. BASKETBALL  
TOURNAMENT

BROUGHT TO YOU OVER

dial  
**590**



**WVLK**

*The Kentucky Colonel Station*

dial  
**590**

AND THE

**STANDARD OIL NETWORK**

**WCTT**  
CORBIN

**WHOP**  
HOPKINSVILLE

**WAVE**  
LOUISVILLE

**WFKY**  
FRANKFORT

**WVLK**  
LEXINGTON

**WPAD**  
PADUCAH

**WOMI**  
OWENSBORO



Play by Play

With

**CLAUDE SULLIVAN**

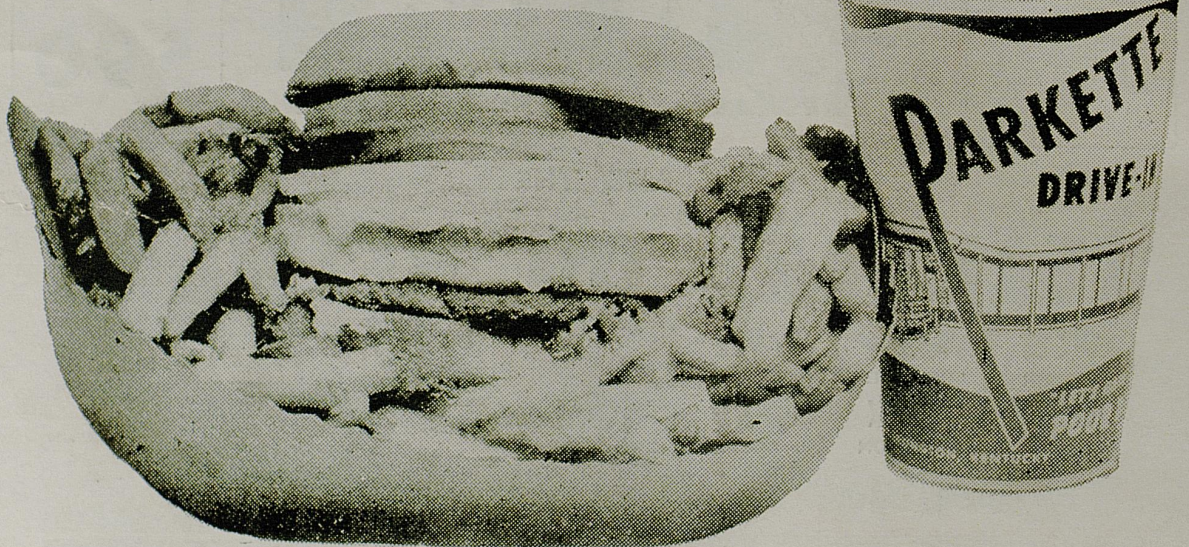
— ALSO —

All Games of the High School Basketball  
Tournament will be heard over WVLK



Try  
Parkette's  
Famous  
"Poor Boy"

"Before  
And After  
The Game  
Or Show,  
The Parkette's  
The Place  
To Go"



19 OTHER  
DELICIOUS  
SANDWICHES !

CHICKEN OR  
JUMBO SHRIMP  
IN THE BOX !

GIANT  
MILK  
SHAKES !

Curb Service — Rain or Shine  
**Parkette Drive In**

No. 1 — Northeast Beltline . . On Bypass 25 — Phone 4-8723

No. 2 — Off Beltline Georgetown Rd. U.S. 25 — Phone 2-8617

— Also Be Sure to Patronize —

**THE COLONEL'S RESTAURANT**

• Home-cooked Food

Main at Midland

• Dining Room Service