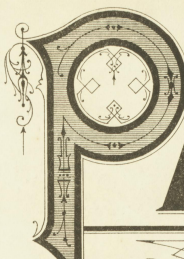


**CLARK**



**PADUCAH**

KENTUCKY

**SANBORN MAP CO.**  
117 Broadway  
NEW YORK

SCALE 50 FT. TO AN INCH

MAY, 1885.

Copyright, 1885, by THE SANBORN MAP & PUBLISHING CO.

Paducah Ky. May, 1885.

The undersigned Insurance Agents have examined the survey of Paducah Ky made by the Sanborn Map & Publishing Co. Agents of New York believe it to be correct and would recommend its adoption and use by all companies represented.

Wm. J. Flannery  
R. G. Ashcraft  
Wm. G. ...  
J. M. ...

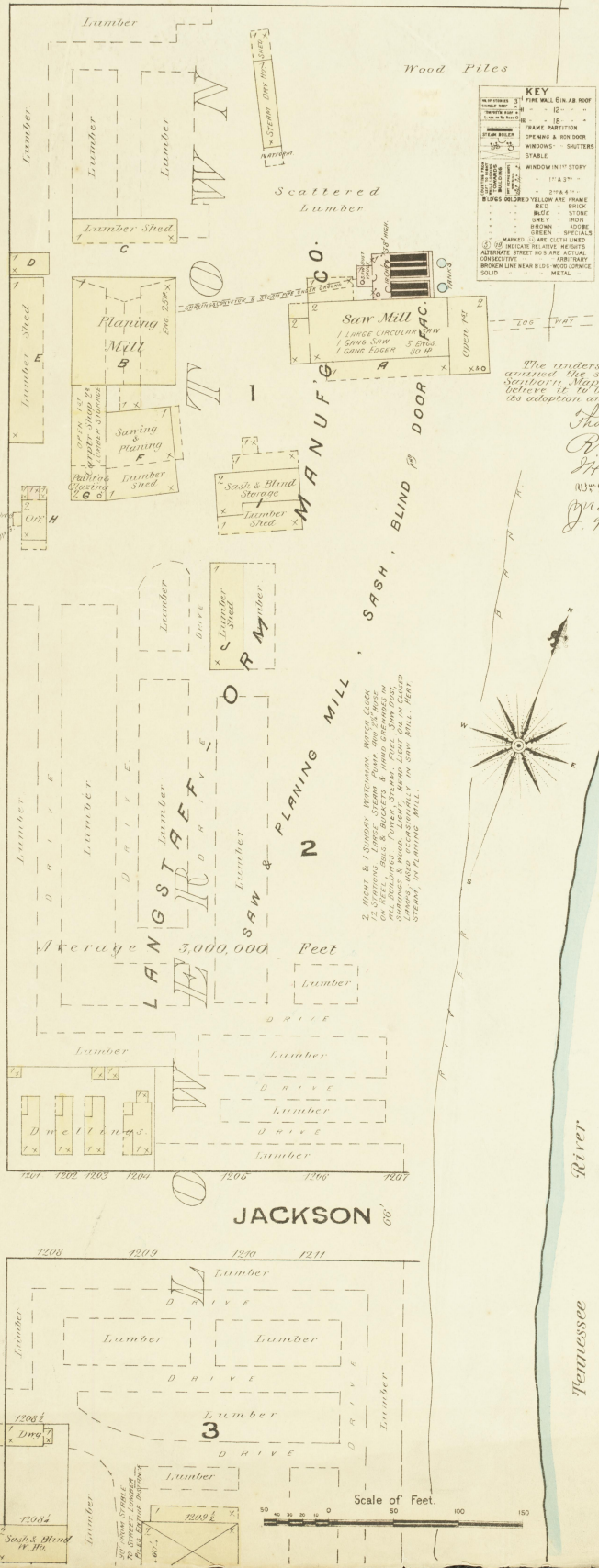
Population 4,500. Prevailing Winds W.  
Water Potable. Indifferent.  
Fire Department Paid. Firemen & Drivers on duty, 1st of class 15, 2nd of class 15, 3rd of class 15. Fire engines, 3. Fire ladders, 20. Fire hooks, 10. Fire axes, 10. Fire buckets, 10. Fire tools, 10.



**INDEX.**

SPECIALS.		INDEX		INDEX	
B	Equihann, J. R., Tobacco Warehouse, 7	J	Jones & McIntosh, Machine Shop, 3	R	Rehkopf, E., Tannery, 7
B	Equihann, J. M., & Co., Tobacco, 2	L	Lander Hotel, 4	R	Richmond Hotel, 2
C	Langstaff' Orn Mfg Co., 1	M	Langstaff' Orn Mfg Co., 1	S	Robertson, 4
C	Ch. O. & S. W. R. R. Shops, 5	M	Langstaff' Orn Mfg Co., 1	S	St. Clair Hall, 2
C	City Corn Mill, 6	M	Langstaff' Orn Mfg Co., 1	S	Southern Hotel, 3
C	Flour Mill, 2	M	Langstaff' Orn Mfg Co., 1	S	Sorell King Lumber Co., 3
C	Hall, 3	M	Langstaff' Orn Mfg Co., 1	T	
C	Olyne, W. N., Tobacco Warehouse, 4	M	Langstaff' Orn Mfg Co., 1	T	Terrell, Reeves & Co., Tobacco, 4
D	Dudley & Richardson, Tobacco Warehouse, 4	M	Langstaff' Orn Mfg Co., 1	U	
F	Farley & Rogers, Slave Mill, 7	O	Opera House, 4	U	U. S. Post Office, 4
F	First Baptist Church, 4	P	Paducah Furniture Mfg Co., 6	V	Vaughn, G., & Co., 5
G	Greif Bros., Wagon Factory, 3	P	Hub Works, 5	S	S. C., 5
H	Hobson & Co., Tobacco Warehouse, 4	P	Lumber Co's Planing Mill, 3		
J	Johnson & Co., Machine Shop, 6	P	Iron Factory, 3		
		P	Saw Mill, 4		
		P	News Printing, 4		
		P	Ship Yard Co., 4		
		P	Piper, J. C., Tobacco Warehouse, 7		
		P	Pleasant C. M., & Co., Tobacco Warehouse, 6		
		P	Presbyterian Church, 3		
		P			
		P			
		P			
		P			
		P			
		P			
		P			
		P			
		P			

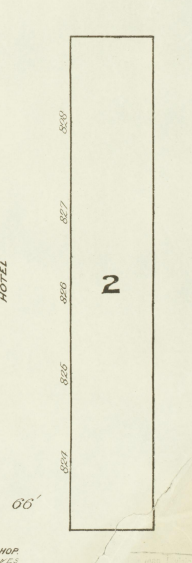
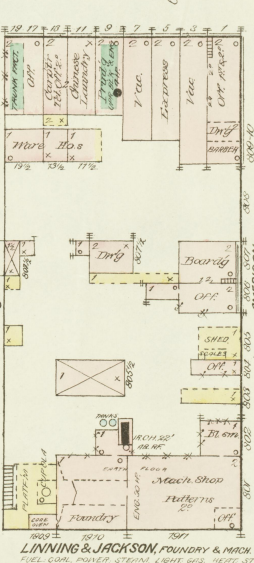
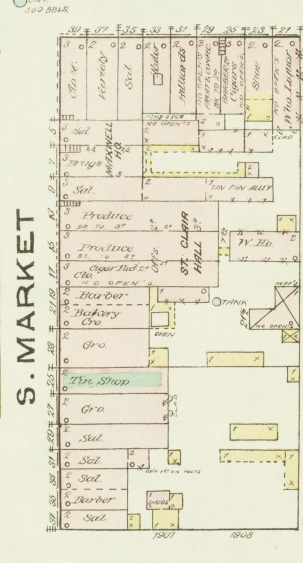
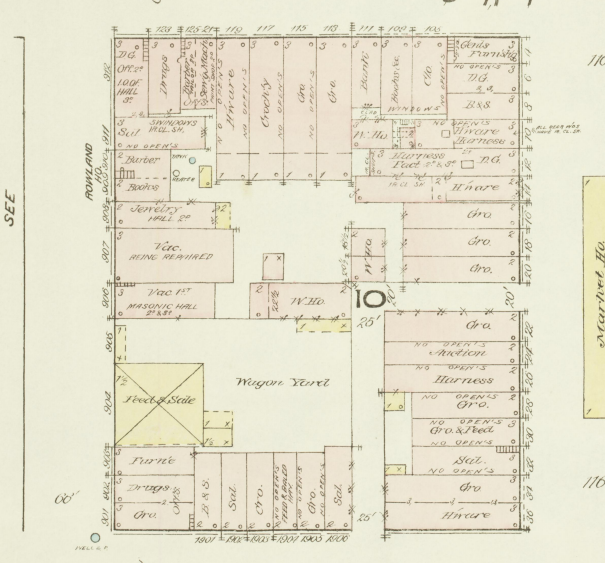
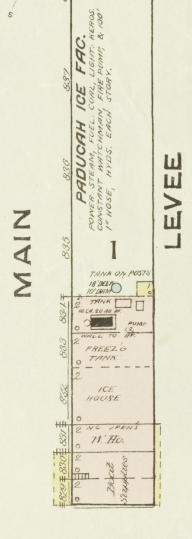
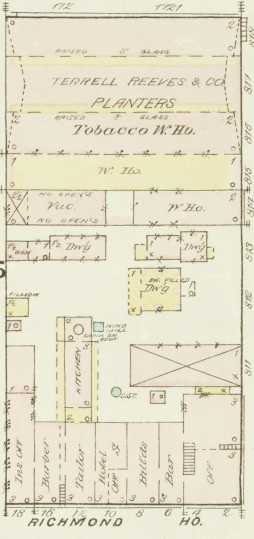
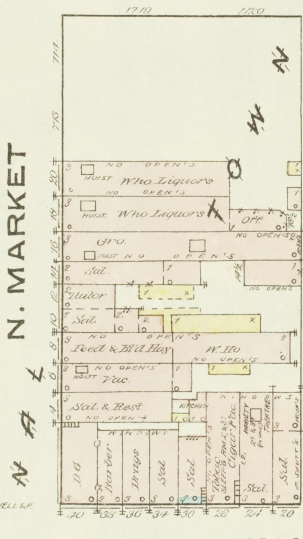
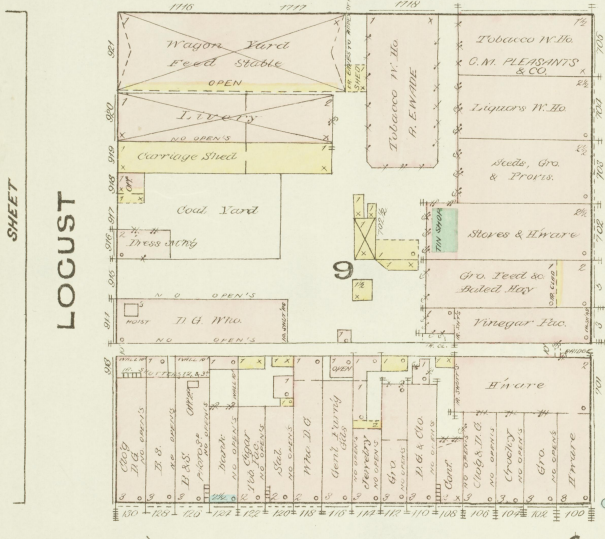
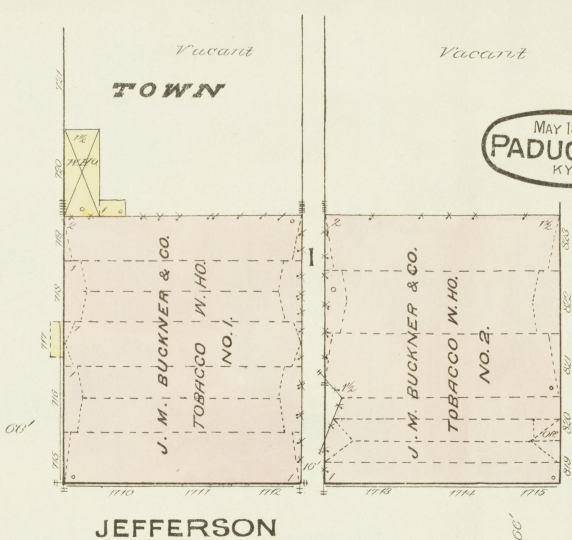
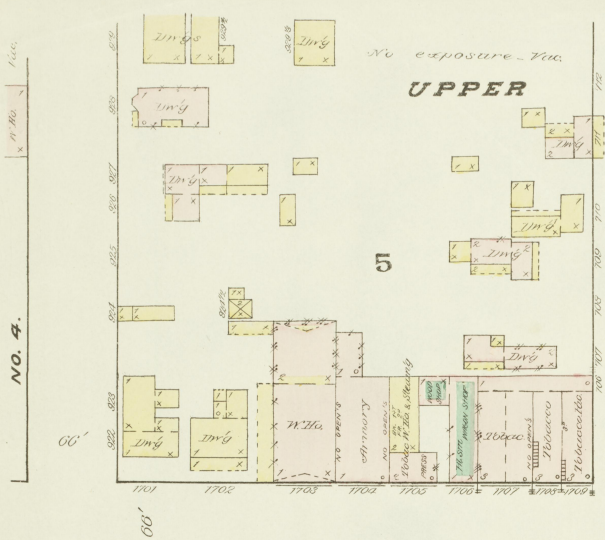
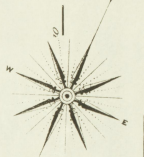
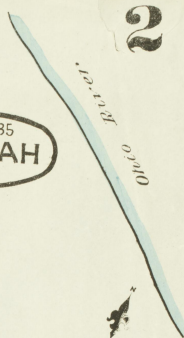
**S. MARKET**



SEE SHEET NO. 3.  
ADAMS ST. 66'  
CLARK ST. 66'  
JACKSON ST. 66'  
Scale of Feet: 50, 100, 150



MAY 1885  
**PADUCAH**  
KY.



Scale of Feet. 0 50 100 150

NO. 4.

SHEET

SEE

SEE

SHEET

NO. 3.

O R T G

N. MARKET

BROADWAY

RICHMOND

MAIN

LEVEE

COURT

S. MARKET

UPPER

TOWN

JEFFERSON

JEFFERSON

PADUCAH ICE FAC.  
CONST. BY M. W. HARRIS, 1883  
1" HOSE, 11/2" HOSE, EACH STORY.

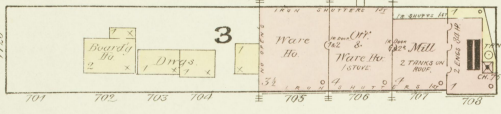
LINNING & JACKSON, FOUNDRY & MACH. SHOP  
1 1/2" HOSE, 11/2" HOSE, EACH STORY. 11/2" HOSE, 11/2" HOSE, EACH STORY.  
NO WATCHMAN & BELL W. WITH BUCKETS EACH STORY  
HAND GREENHOUSES, NO PUMP ON HOSE



Tennessee River

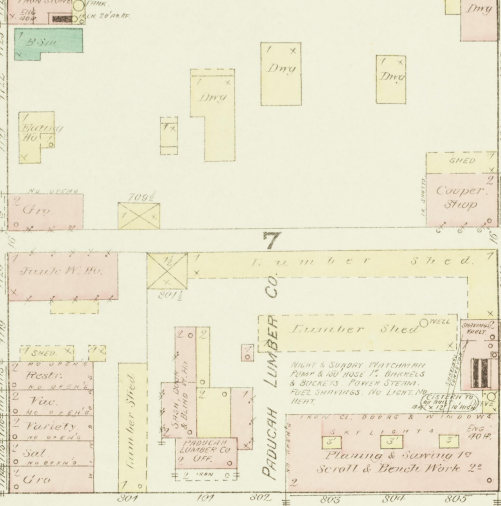
**CITY FLOURING MILLS**  
WATER & SANDY WOODS. BELLS & BUCKETS. 2 1/2" R. P. CONNECTS WITH TRAILS ON RIVER & STEAM POWER. PAUL CONNECTING EACH RIVER. 150' RISE. POWER STEAM. FUEL, COAL. LIGHTERS & LARD OIL IN LIGHTERS.

3  
MAY 1885  
**PADUCAH**  
KY.

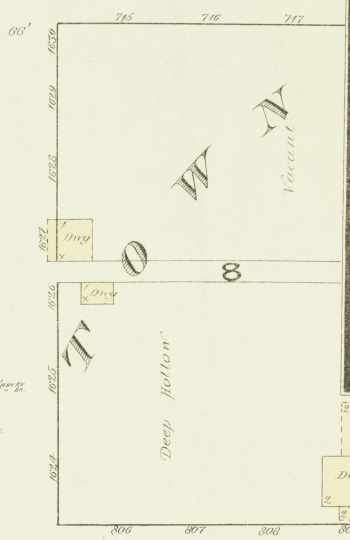


**MAIN**

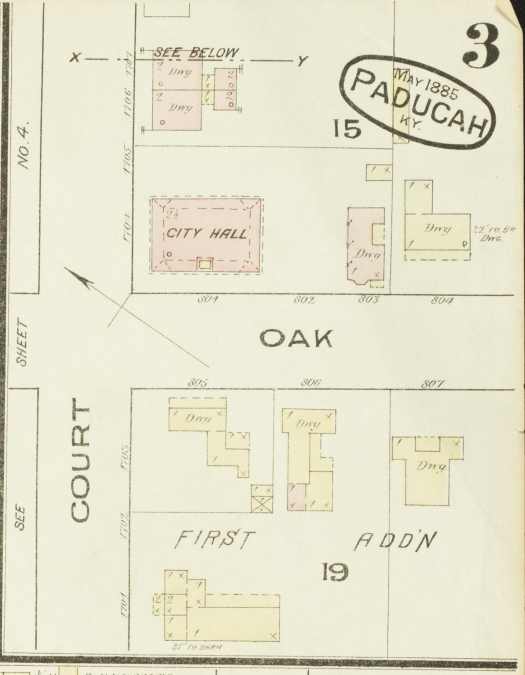
**CITY CORN MILLS**



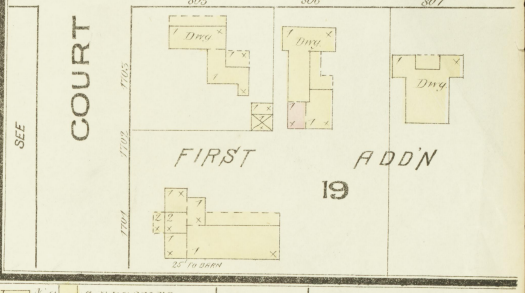
COURT



**S. MARKET**

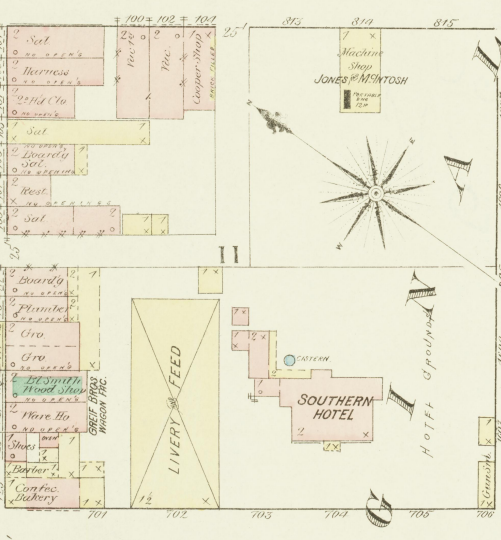


**OAK**

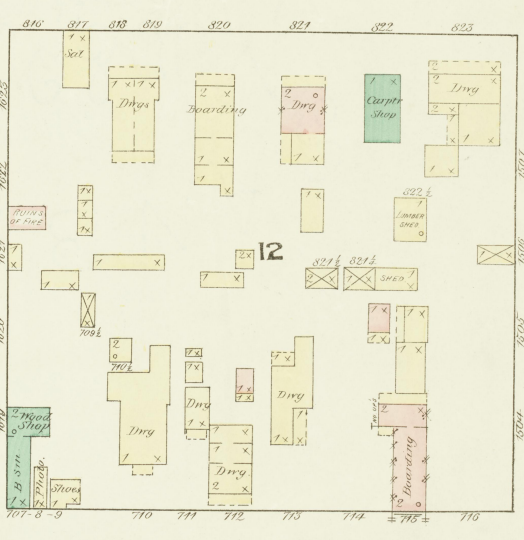


**FIRST ADDN**

LUMBER-STAFF - LUM & CO'S  
PLANING MILL  
&  
LUMBER YARD.  
SEE SHEET NO. 1.

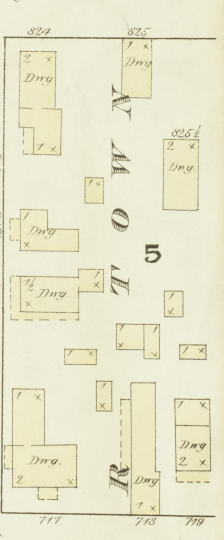


WASHINGTON



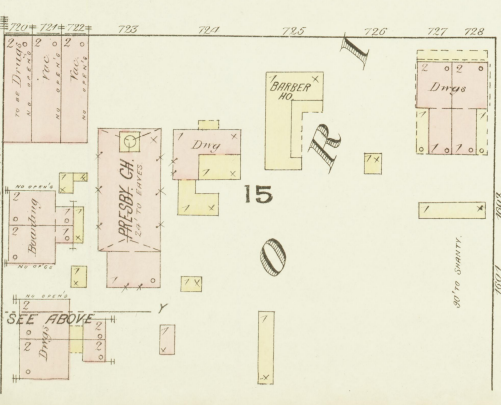
**LOCUST**

Scale of Feet

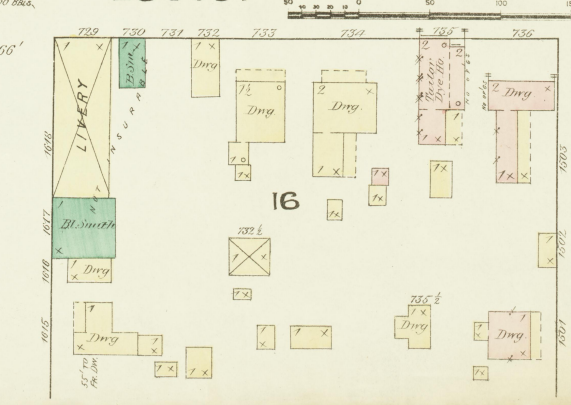


CLARK

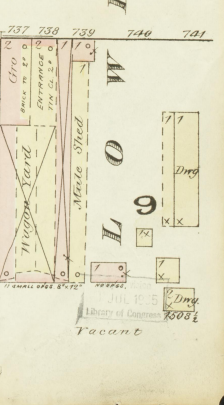
TOWN



**PRESBY CH**



**LIVERY**



**LOW**

NO. 2

SEE

SEE SHEET NO. 4.

NO. 4.

SHEET

SEE

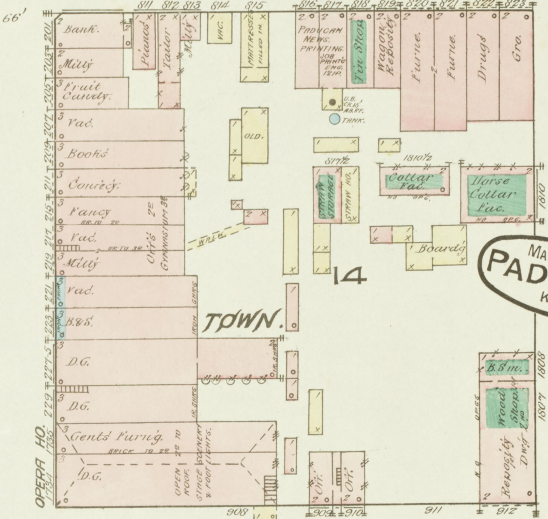
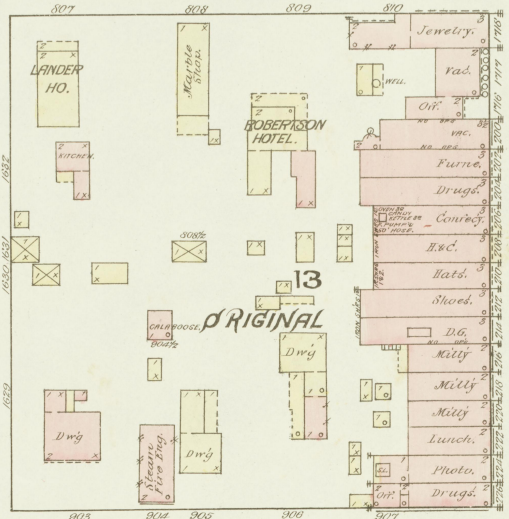
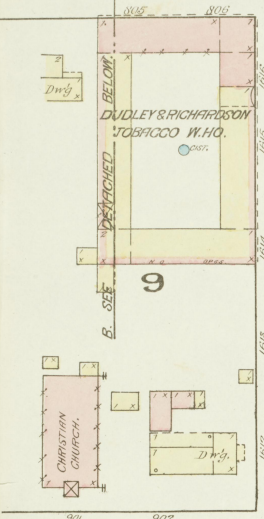
SEE

SEE

SEE

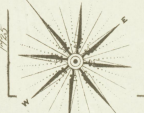
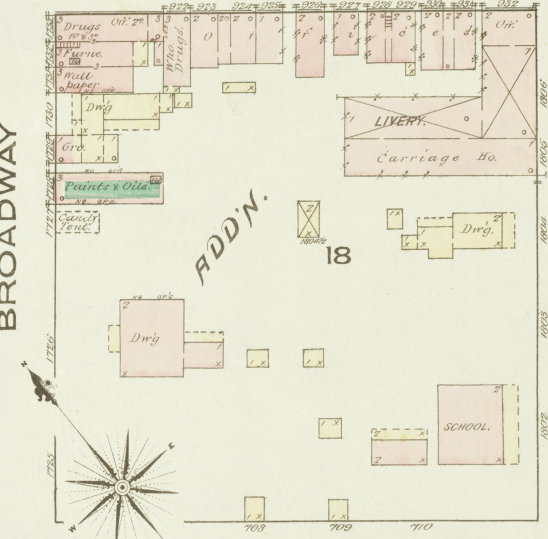
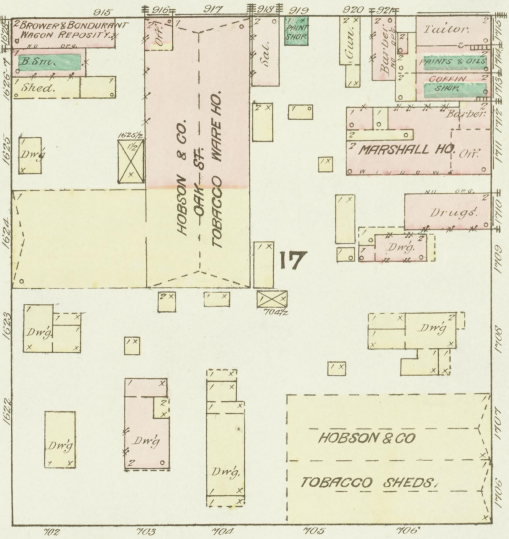
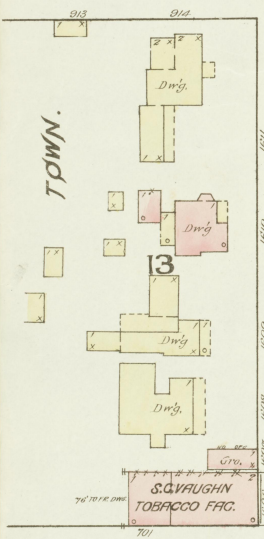


LOCUST



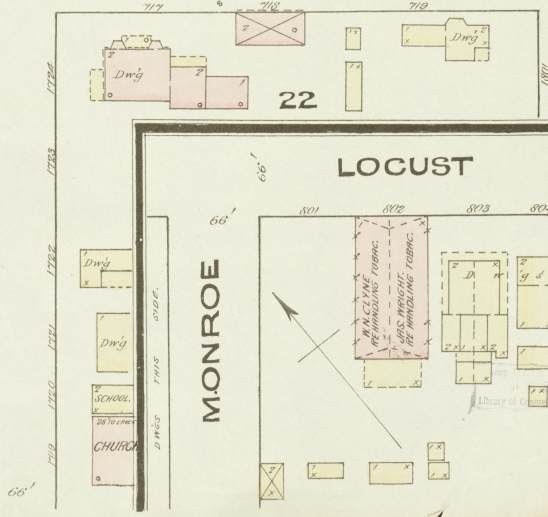
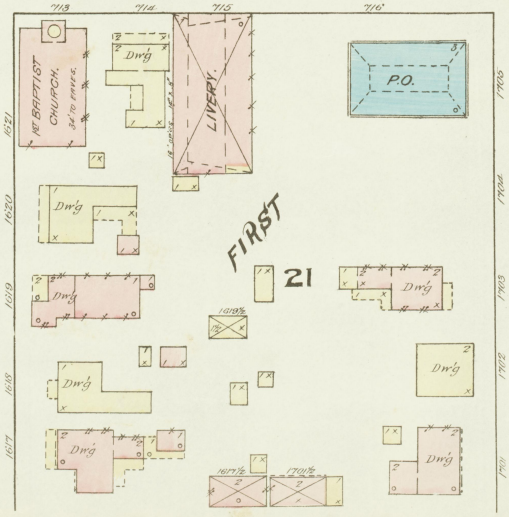
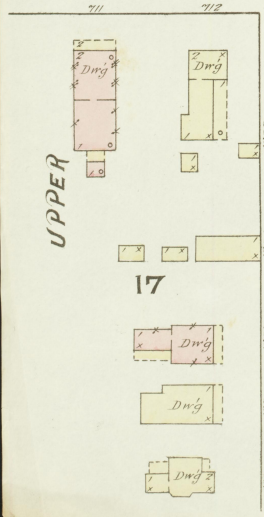
MAY 1885 PADUCAH KY.

OAK



Scale of Feet. 0 50 100 150

CHESTNUT

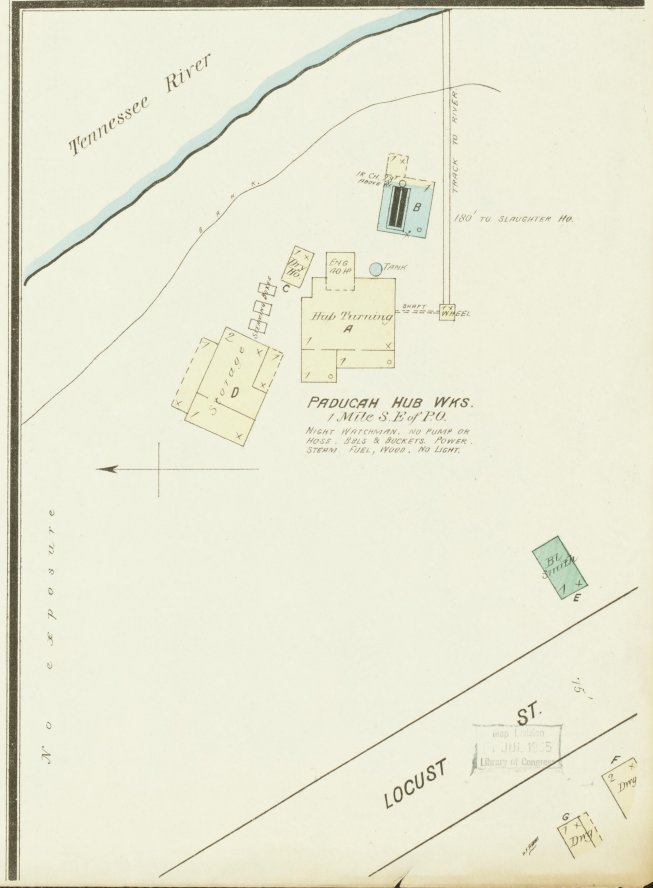
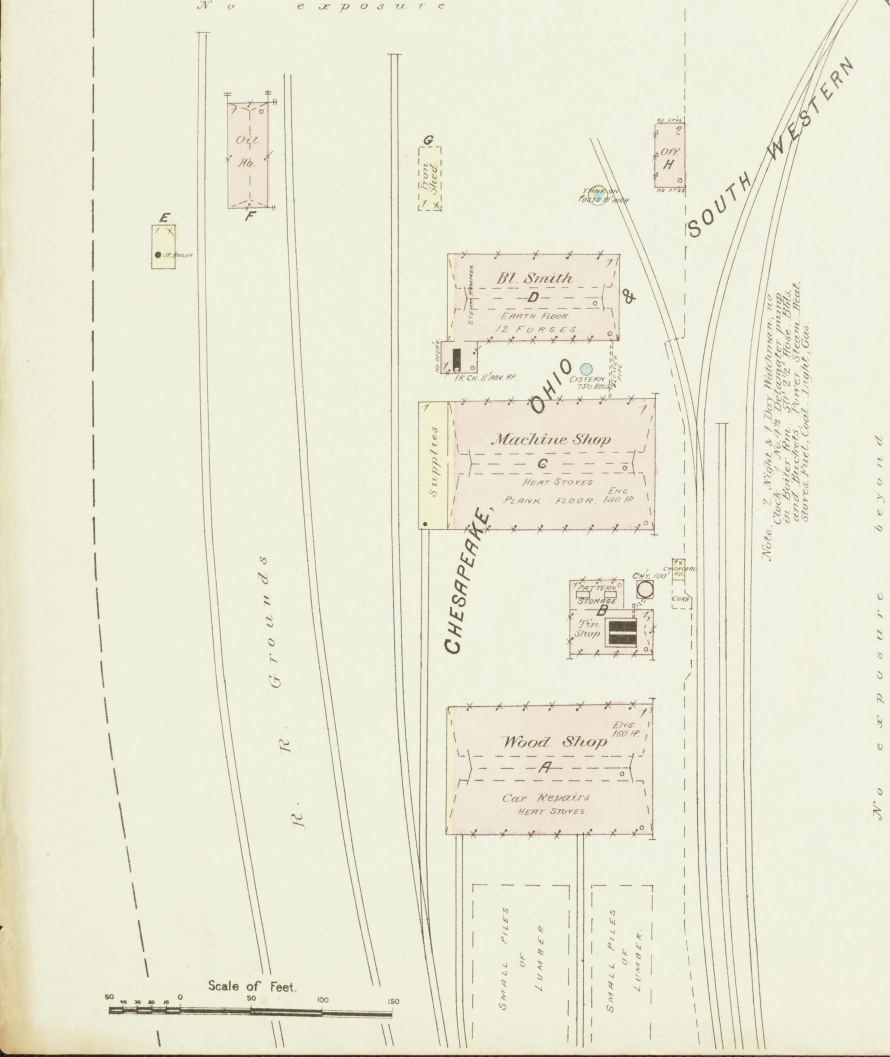
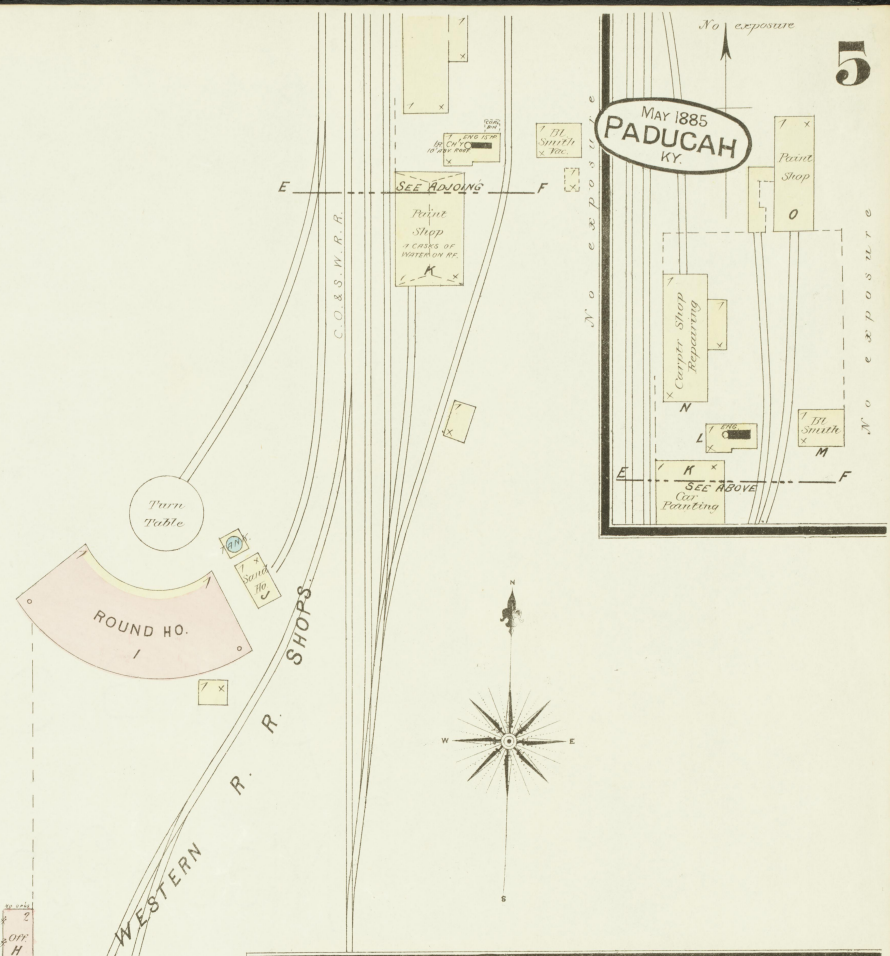
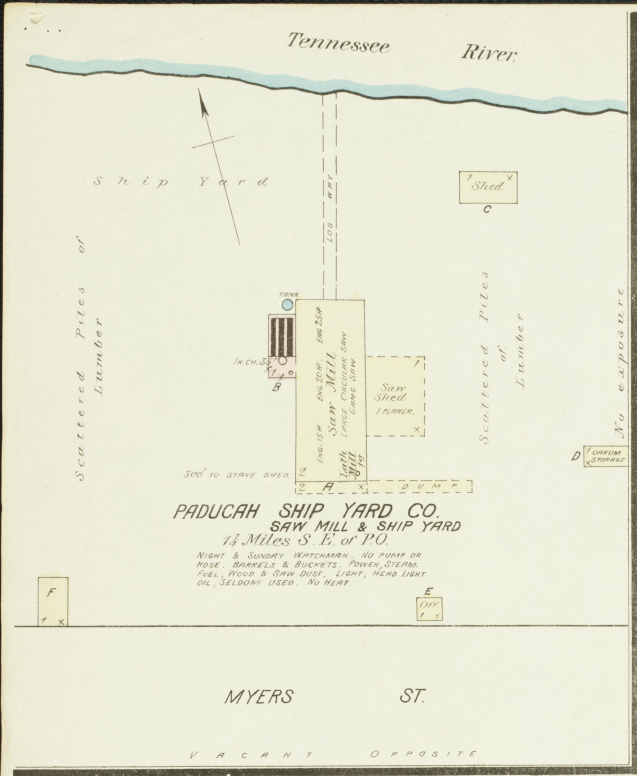


NO. 3.

SHEET

SEE

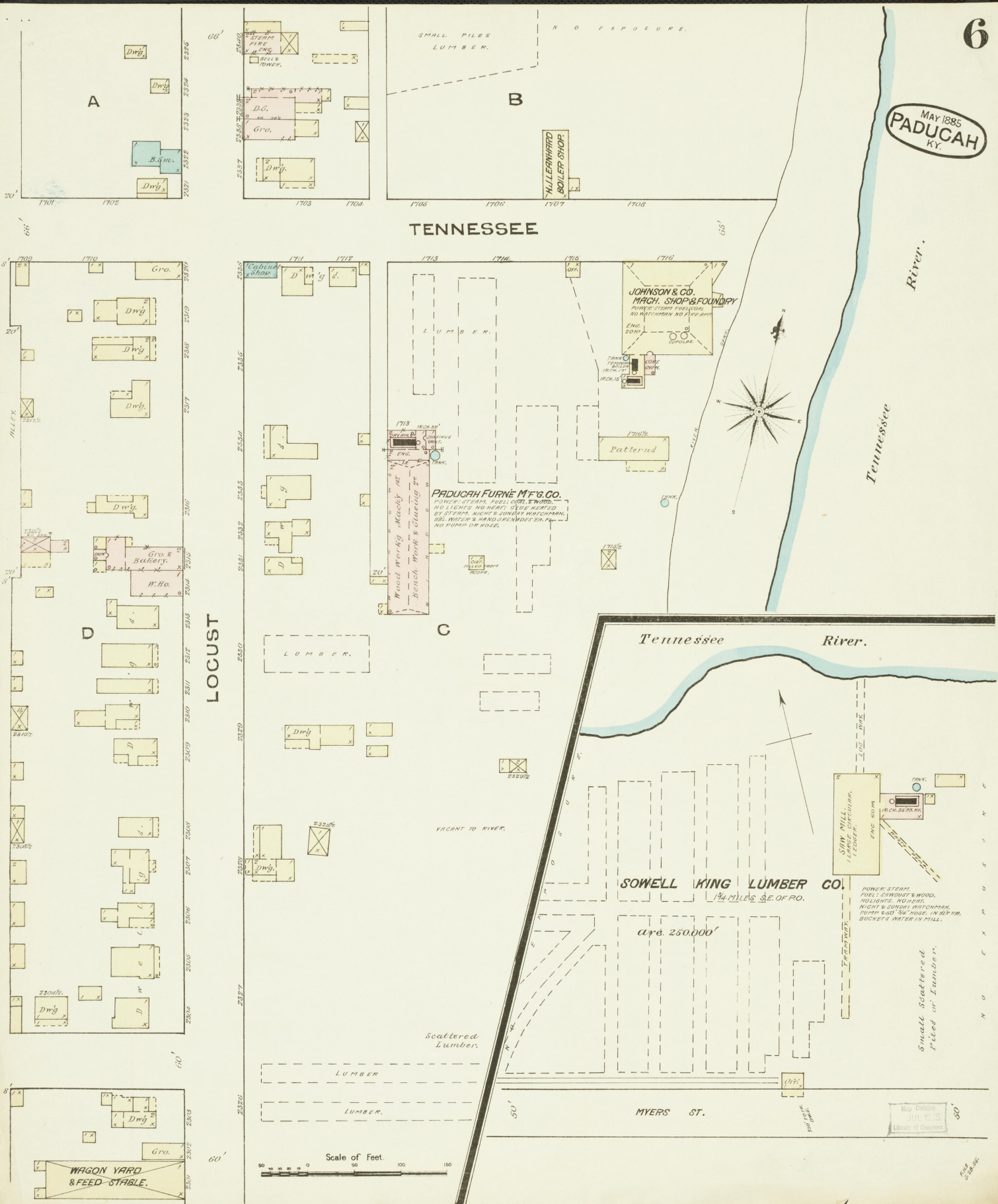




Note: 2 Nights & 1 Day Watchman, no Cook, no Pump, no Hoist, no Buckets, Power System, Fuel, Wood & Saw Dust, Light, Hand Light Oil, Sledging Used, No Heat.



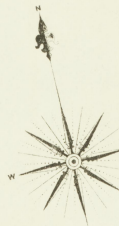
MAY 1885  
**PADUCAH**  
KY.





Tennessee River

MAY 1885  
PADUCAH  
KY.



**PADUCAH LUMBER CO.**

STEAM POWER, FUEL, SAW-DUST & WOOD, LIGHTS, HEAT, LIGHT OIL, INCESSOR LAMP, NIGHT WATCHMAN, GORDON & WATKINS, DOUBLE P. IN ENG. RM. 800' W. WIDE ON REEL IN ENG. RM. BBL'S AND BUCKETS, HAND BRENDAES.

**FARLEY & ROGERS STAVE MILL**

POWER, STEAM, FUEL, WOOD, NIGHT WATCH, BBL'S, & BUCKETS, NO PUMP ON HOSE.

**MYERS**

