

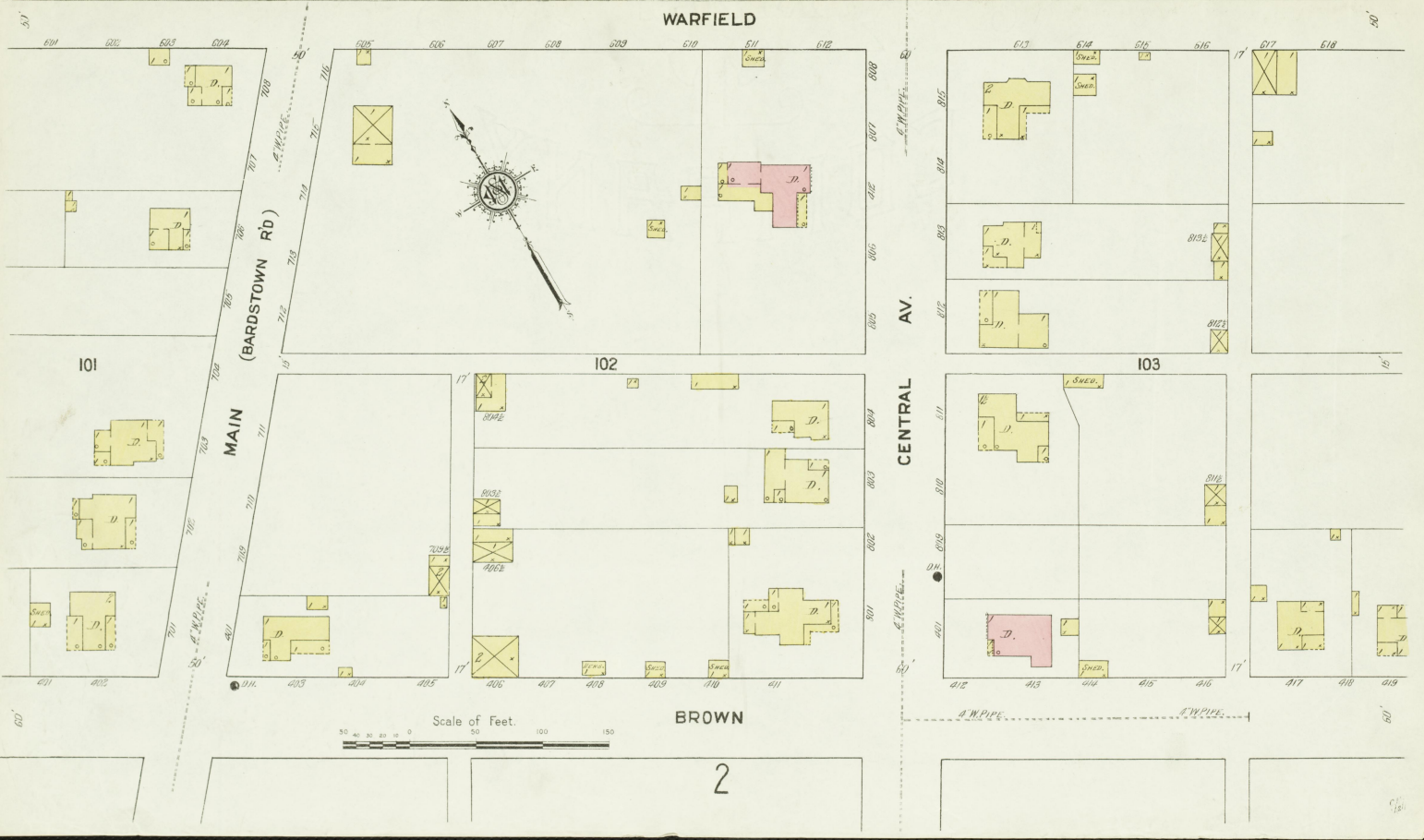
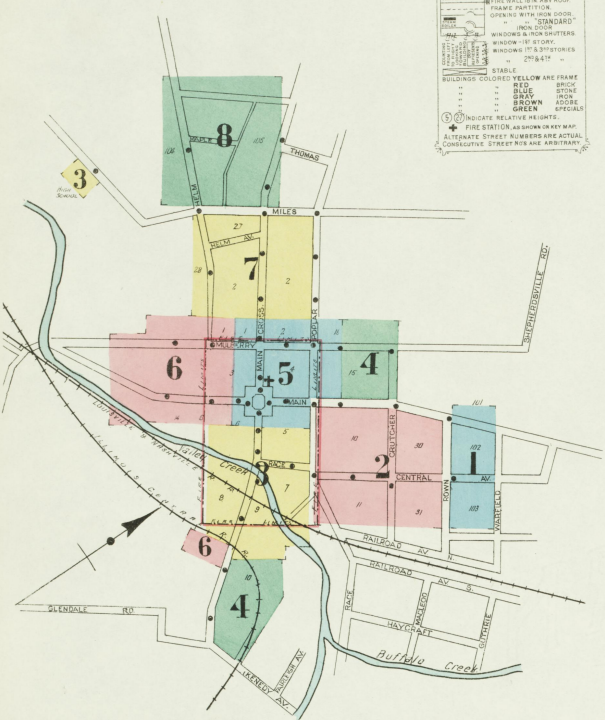
INDEX.

| STREETS. | SECT. | WARFIELD. | W. | SECT. |
|---------------------------|--------------------------------|-----------|----|-------|
| Bardstown Road, see Main. | | | | |
| Brown, | 401-419 | 1 | | |
| Central Ave., | 508-532 | 2 | | |
| Cherry Alley, | 803-815 | 1 | | |
| Crotcher, | 101-118 | 4 | | |
| Haycraft Alley, | 2, 3, 5, & 6 | 7 | | |
| Helm, | 301-334 | 7 | | |
| Kenedy Ave., | 501-533 | 7 | | |
| Lancaster Alley, | 4 & 5 | 3 | | |
| Litchfield Road, | 4 & 5 | 3 | | |
| Main, | 98-107 | 5 | | |
| Maple, | 110-115 | 5 | | |
| Mulberry, | 118-124 | 4 | | |
| | 225-248, actual | 5 | | |
| | 201-216 | 1 | | |
| | 801-812 | 1 | | |
| | 41-66 | 7 | | |
| | 67-132 | 7 | | |
| | 133-163 | 3 | | |
| | 164-171 | 4 | | |
| | 195-214 | 4 | | |
| | 215-288 | 4 | | |
| | 1801-1829 | 4 | | |
| | near T. J. Morrison Lumber Co. | 3 | | |
| | 3, 7, & 8 | 5 | | |
| | 374-384 | 5 | | |
| | 400-411, actual | 3 | | |
| | 580-705 | 6 | | |
| | 704-705 | 5 | | |
| | 707-715 | 4 | | |
| | 801-816 | 4 | | |
| Pearl Alley, | 3 & 6 | 7 | | |
| Plum Alley, | 3, 5 & 7 | 7 | | |
| Poplar, | 212-234, actual | 7 | | |
| | 347-351 | 5 | | |
| | 357-359 | 5 | | |
| | 501-503 | 5 | | |
| | 601-604 | 5 | | |
| | 703-707 | 5 | | |
| | 708-710 | 5 | | |
| | 711-713 | 4 | | |
| Race, | 149-161 | 3 | | |
| | 504-505 | 2 | | |
| Rye (arbitrary), | 504-505 | 2 | | |
| Strawberry Alley, | 3, 5, 6 & 7 | 3 | | |
| Vego Alley, | 3 | 3 | | |

NOTE.—House Numbers given are arbitrary.
• Indicates only one side of Street shown.

KEY

[Symbol] FIRE MILL IN ANY ROOF
 [Symbol] MEDICAL OFFICE
 [Symbol] FIRE HALL OR ANY ROOF
 [Symbol] WOOD SHED
 [Symbol] FRAME PARTITION
 [Symbol] OPENING WITH IRON CURTAIN
 [Symbol] STANDARD
 [Symbol] WINDOWS & DOOR SHUTTERS
 [Symbol] WINDOW UP STORY
 [Symbol] WINDOWS UP 3 STORIES
 [Symbol] CHIMNEY
 [Symbol] STABLE
 [Symbol] BUILDINGS COLORED YELLOW ARE FRAME
 [Symbol] RED BRICK
 [Symbol] BLUE STONE
 [Symbol] GREEN GRASS
 [Symbol] BROWN ASHORE
 [Symbol] GREEN SPECIALS
 [Symbol] (3) INDICATE RELATIVE HEIGHTS.
 [Symbol] FIRE STATION AS SHOWN ON THIS MAP
 ALTERNATE STREET NUMBERS ARE ACTUAL
 CONSECUTIVE STREET NUM ARE ARBITRARY





JULY 1912
ELIZABETHTOWN
KY.

BROWN 1

30

2

31

CRUTCHER

CENTRAL AV.

4 MAIN

HAYCRAFT ALLEY

VEGO 10 ALLEY

Scale of Feet.
0 50 100 150

RACE

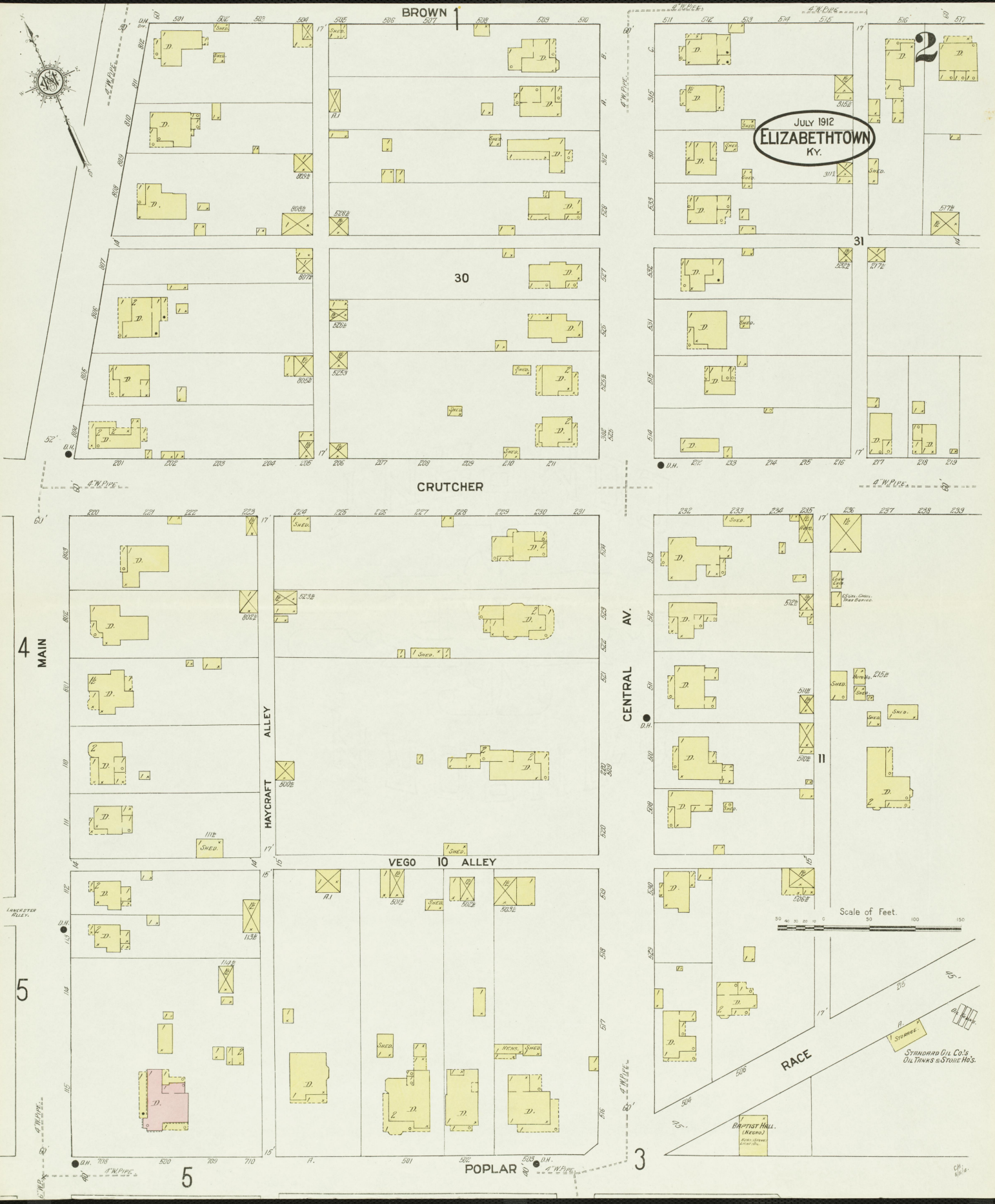
POPLAR

5

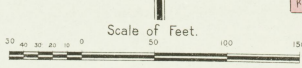
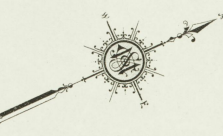
3

STANDARD OIL CO.'S
OIL TANKS & STORE HO'S.

BAPTIST HALL.
(NECOR)



JULY 1912
ELIZABETHTOWN
KY.



MILES

HARDIN COUNTY HIGH SCHOOL
NEAR STORES LIGHT OIL

4

JULY 1912
ELIZABETHTOWN
KY

2

LEITCHFIELD ROAD

ELIZABETHTOWN WATER WORKS & ELECTRIC LIGHT PLANT
HEAT & POWER, STEAM LIGHTS, ELEC.
FUEL, COAL, 30" PIPE, THERMOPHORE

Located 1/4 Miles S.W. of Court Ho.

MAIN CROSS

FORMER SITE
C. E. BEELER
ICE FACTORY

Located 1/4 Miles N.W. of Court Ho.

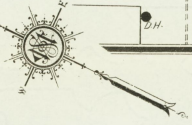
CRUTCHER

MULBERRY

MAIN

LANCASTER ALLEY

NO EXPOSURE.



ELIZABETHTOWN ICE & ICE CREAM CO.
HEAT, STEAM, LIGHTS, ELECTRIC, I.E.P.
POWER, STEAM, FUEL, COAL, 30" PIPE

ICE CREAM MAKING
ICE CREAM PLANT
ICE CREAM FACTORY

COLORED SCHOOL

FRESH MISSION CHURCH

MAIN CROSS

KENEDY AV.

Scale of Feet.
0 20 40 60 80 100 120 140 150

6

3

10

5

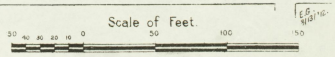
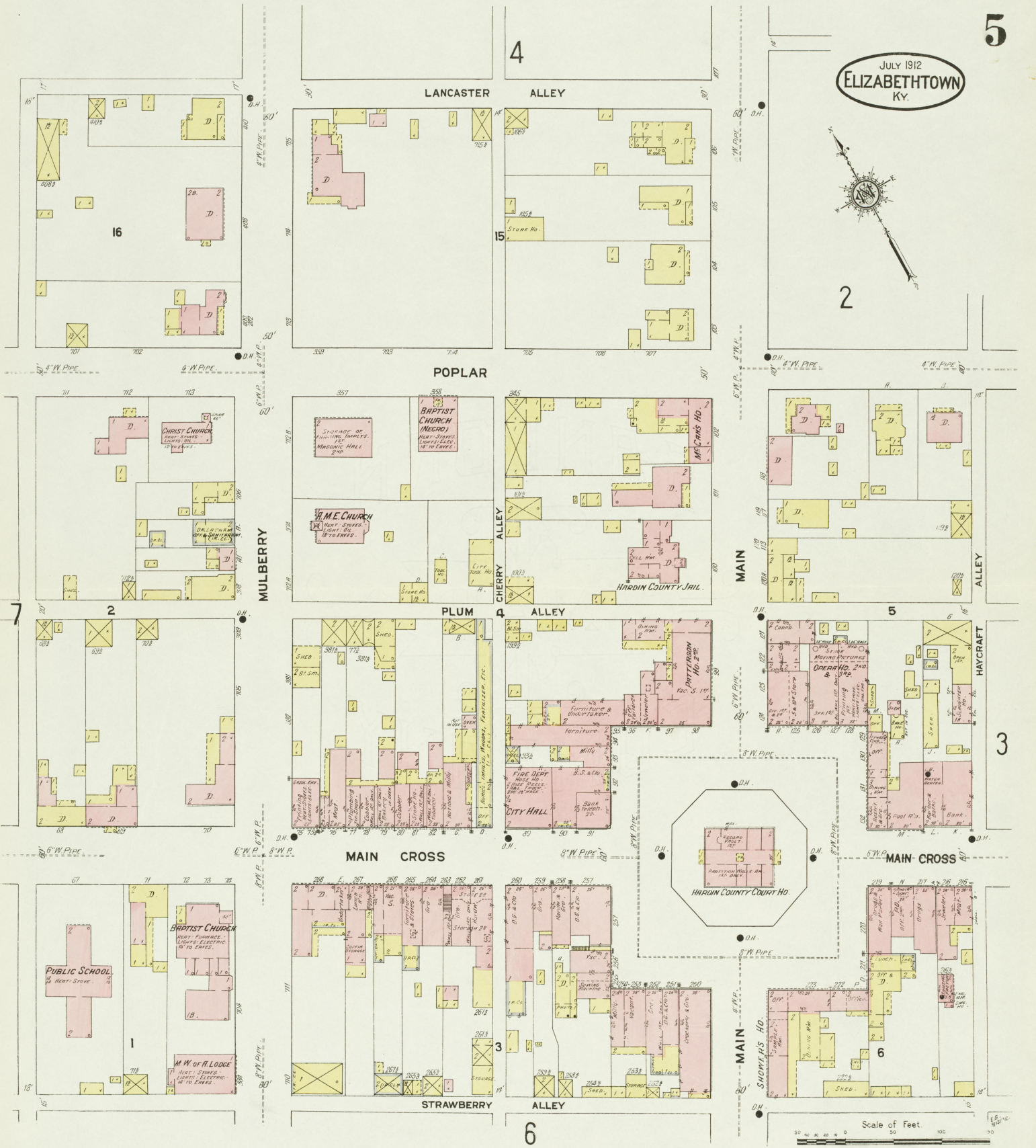
16

15

101



JULY 1912
ELIZABETHTOWN
KY.



POPLAR

JULY 1912
ELIZABETHTOWN
KY.

2 PLUM ALLEY

MAIN CROSS

27 STRAWBERRY ALLEY

HELM

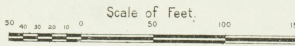
28

5

6



0.8 MILES



C.M. 8412

JULY 1912
ELIZABETHTOWN
KY

FAIR GROUNDS

RYE ARBITRARY

MAPLE

105

HELM

104

MAIN CROSS

106

ST. JAMES A.C. CHURCH
HEAVY STONE
LIGHT'S 200
12" 10" 8" 6"

PARISH H.Q.

