

# INSURANCE MAPS OF MAYSVILLE KENTUCKY MASON COUNTY

## SANBORN MAP COMPANY

11 Broadway, New York

SCALE 50 FT. TO AN INCH

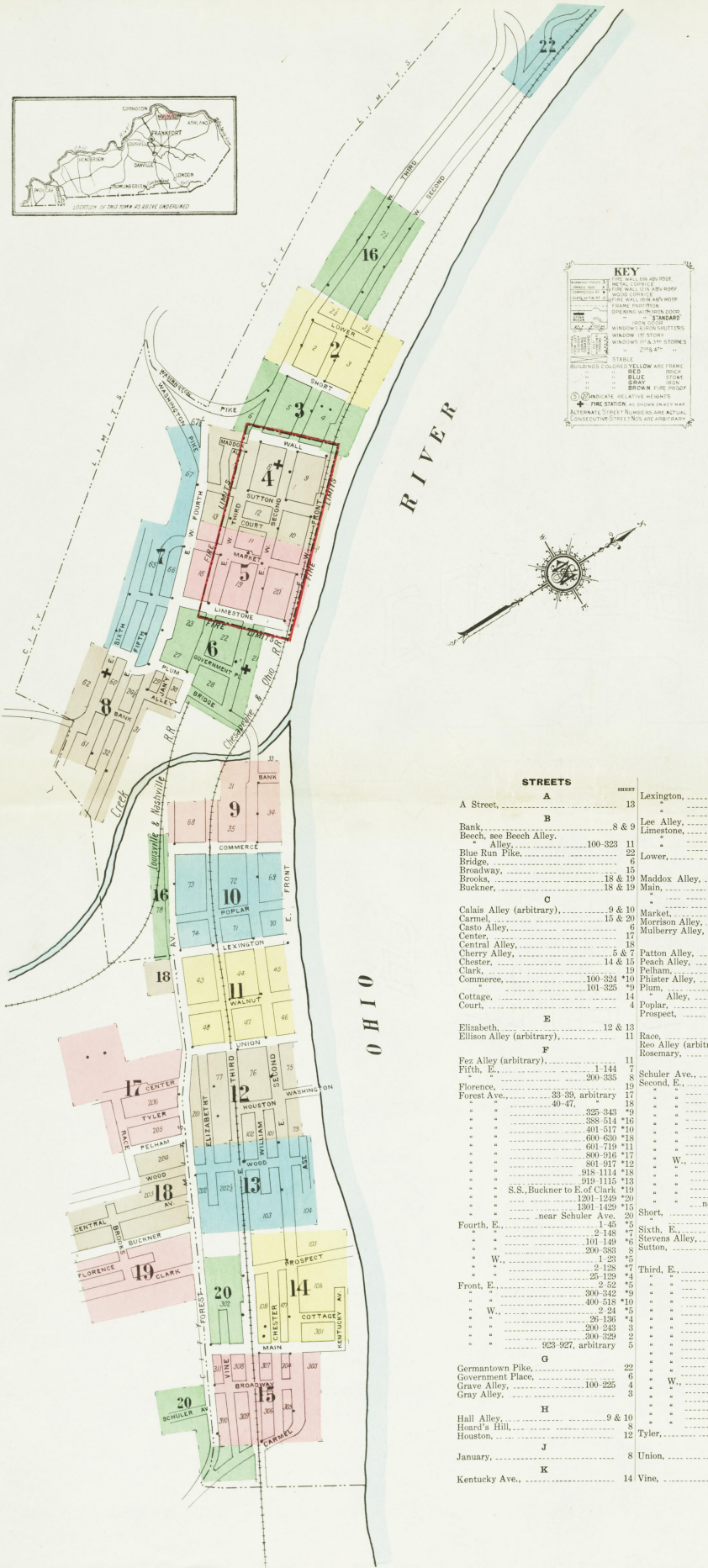
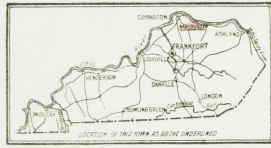
JAN. 1914

Copyright 1914, by the Sanborn Map Co.

Population 10,000 - Prevailing Winds S.W.

**WATER FACILITIES**  
Gravity system of water works. Water supply from Ohio River. Two reservoirs capacity 2 1/2 million gals. elevated 375 ft. above business portion of town. Filled by two blast steam pumps, capacity two million gals. per 24 hours. Only one pump can work at a time. About 14 miles of water pipes. 47 1/2 ft. diam. System installed in 1880. 90 double hydrants. Average pressure 45 lbs. Average daily consumption 3/4 million gallons.  
Auxiliary System - One Gordon duplex steam pump, capacity one million gals. and one McGowan duplex steam pump, capacity 1/2 million gals. per 24 hours.

**FIRE DEPARTMENT**  
One paid company of chief and four men.  
One Model M. G. P. Knox combination chemical motor with 35 gall. chemical tank, 200 ft. 3/4" chemical hose, 100 ft. 2 1/2" hose and 90 ft. of ladders. One 45 ft. Schacht combination chemical motor with 35 gall. chemical tank, 200 ft. 3/4" chemical hose, 150 ft. 2" hose and 37 ft. of ladders. One hose reel, 3800 ft. 2" cotton rubber lined hose and 800 ft. 2 1/2" rubber hose in reserve. All hose tested and in good condition.  
Ginnetel fire alarm system, 21 boxes. Five alarm bell on fire station.  
Principal streets brick paved and Macadamized. Public lights electric.



**KEY**

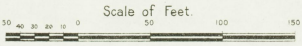
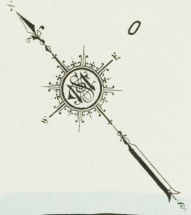
- FIRE WALL ON 4th FLOOR
- FIRE WALL ON 2nd FLOOR
- FIRE WALL ON 1st FLOOR
- FIRE WALL ON 3rd FLOOR
- FIRE WALL ON 4th FLOOR
- FIRE WALL ON 5th FLOOR
- FIRE WALL ON 6th FLOOR
- FIRE WALL ON 7th FLOOR
- FIRE WALL ON 8th FLOOR
- FIRE WALL ON 9th FLOOR
- FIRE WALL ON 10th FLOOR
- FIRE WALL ON 11th FLOOR
- FIRE WALL ON 12th FLOOR
- FIRE WALL ON 13th FLOOR
- FIRE WALL ON 14th FLOOR
- FIRE WALL ON 15th FLOOR
- FIRE WALL ON 16th FLOOR
- FIRE WALL ON 17th FLOOR
- FIRE WALL ON 18th FLOOR
- FIRE WALL ON 19th FLOOR
- FIRE WALL ON 20th FLOOR
- FIRE WALL ON 21st FLOOR
- FIRE WALL ON 22nd FLOOR

### INDEX

STREETS		STREETS		STREETS		STREETS	
A	B	C	D	E	F	G	H
A Street, 13	Bank, 8 & 9	Blue Run Pike, 100-323 11	Brooks, 18 & 19	Buckner, 18 & 19	Calais Alley (arbitrary), 9 & 10	Casto Alley, 15 & 20	Center, 17
Cherry Alley, 5 & 7	Chestnut, 14 & 15	Clark, 100-324 10	Commerce, 101-325 14	Cottage, 14	Elizabeth, 12 & 13	Elison Alley (arbitrary), 12 & 13	Fifth E, 1144 7
Florence, 200-335 8	Forest Ave., 33-39 17	Fourth E, 1-45 5	Fourth E, 2-148 7	Fourth E, 101-148 6	Front E, 2-53 5	Government Place, 100-225 4	Hall Alley, 9 & 10
January, 11 & 12	Kentucky Ave., 14	Lexington, 100-322 11	Lee Alley, 401-417 16	Limestone, 100-324 6	Lower, 400-511 7	Maddox Alley, 100-320 15	Market, 101-223 14
Morrison Alley, 11	Mulberry Alley, 8	Patton Alley, 4 & 5	Peach Alley, 11	Phater Alley, 17 & 18	Plum, 6, 7 & 8	Poplar, 100-323 10	Race, 17 & 18
Schuler Ave., 200-335 8	Second E, 1-52 5	St. Stephens, 100-183 5	Third E, 1-40 5	W. 100-151 6	W. 200-218 8	W. 400-517 10	W. 600-727 11
W. 800-917 12	W. 1136-1251 14	W. 1300-1425 15	W. 137 5	W. 28-147 4	W. 200-243 3	W. 300-413 2	W. 400-517 10
W. 500-614 16	W. 600-727 11	W. 800-917 12	W. 918-1169 13	W. 1127-1249 14	W. 1200-1250 20	W. 1300-1427 15	W. 1428-1432 20
W. 1506-1543 17	W. 1600-1700 18	W. 1700-1800 19	W. 1800-1900 20	W. 1900-2000 21	W. 2000-2100 22	W. 2100-2200 23	W. 2200-2300 24
W. 2300-2400 25	W. 2400-2500 26	W. 2500-2600 27	W. 2600-2700 28	W. 2700-2800 29	W. 2800-2900 30	W. 2900-3000 31	W. 3000-3100 32

\* Indicates only one side of Street shown.







JAN. 1914  
MAYSVILLE  
KY.



**MAYSVILLE COTTON MILLS.**  
NIGHT WATCHMEN - AMERICAN CLOCK-  
WORK STATIONS - BURLY BOUNDS - HEAT -  
STEAM - FUEL - COAL - CONDUITS - ELEC.  
SMALL HAND ROSE & V.P. & ROSE EX. P.V.  
SIZES FROM OUTSIDE OF RE. IN. 200' 24"  
ROSE ON REEL - PERFORATED PIPES IN MILL  
FRONT FOR CITY WATER, PRESSURE VALVES  
FRONT BARS & PIPES FROM REEL 300' 24"  
ROSE ON PREMISES - LIVE STEAM PIPES IN  
RE. & C. OPERATING VALVES & GULLY PIPES  
(L.F.P.)

2

4

4

SHORT

DISTRICT SCHOOL

W. FRONT

W. 2ND ST.

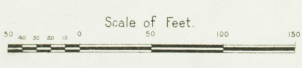
WALL

W. 3RD ST.

5

6

WASHINGTON PIKE







JAN 1914  
MAYSVILLE  
KY

W. FRONT

W. 2ND ST.

W. 3RD ST.

W. 4TH

WALL

SUTTON

COURT

PATTON ALLEY

MADDOX ALLEY

PHISTER 7 ALLEY

Scale of Feet  
0 50 100 150

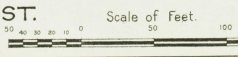
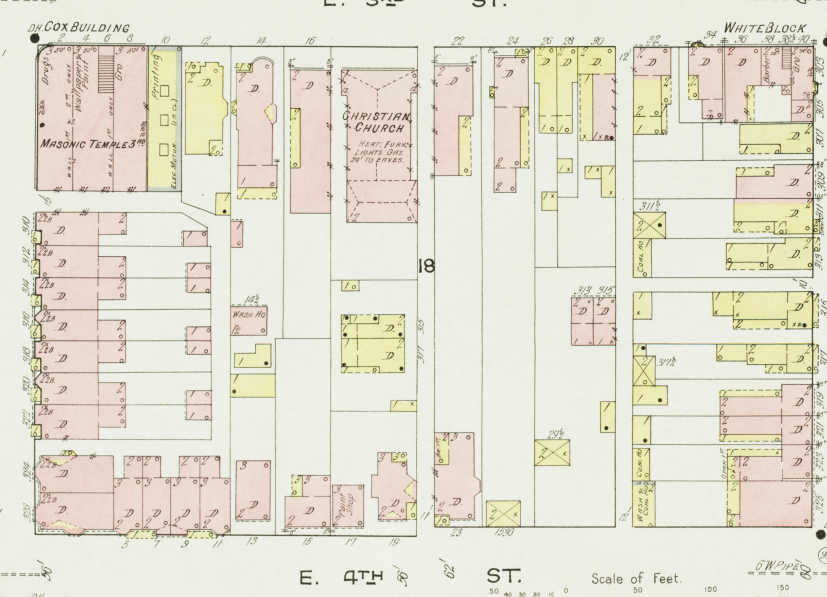
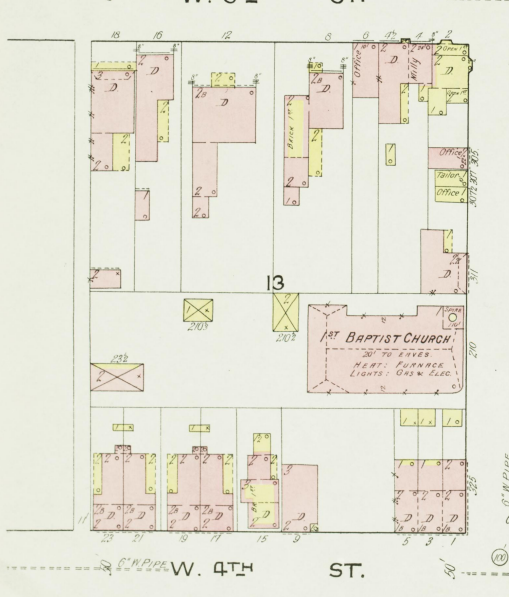
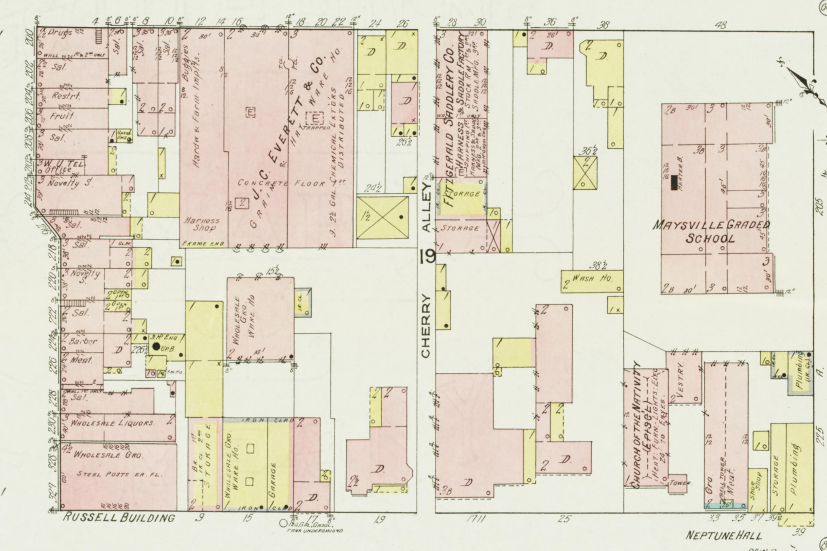
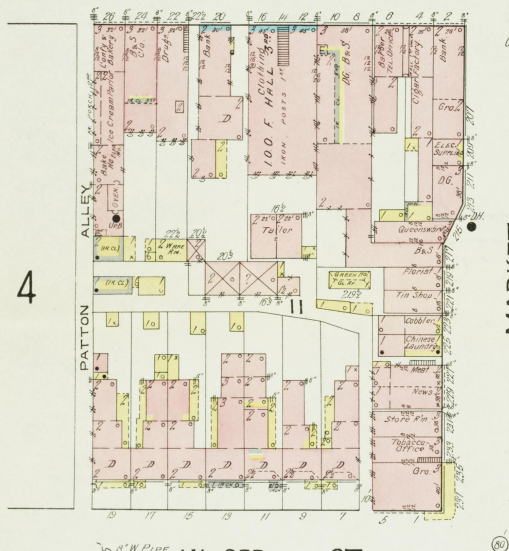
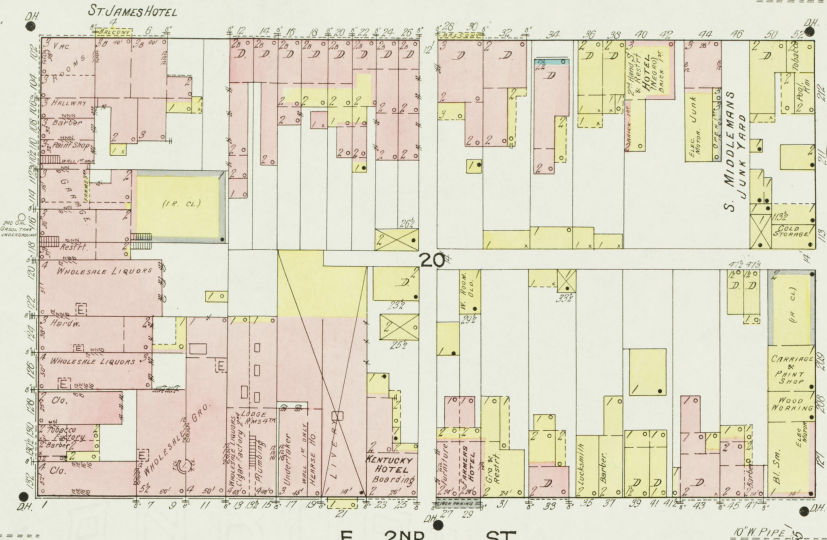
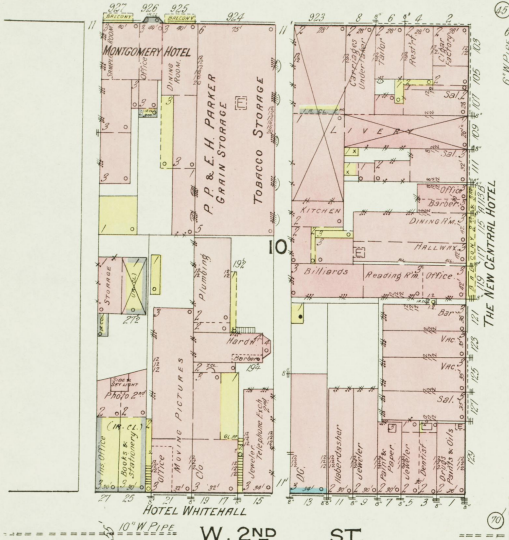
56  
1914



W. FRONT

E. FRONT

JAN. 1914  
MAYSVILLE  
Ky.



4

6

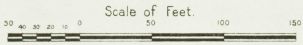
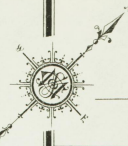
7







JAN. 1914  
MAYSVILLE  
KY.



BETHEL BAPTIST CHURCH  
MEEROI  
W. 4TH ST.  
E. 4TH ST.

Agripino Hospital  
W. 4TH ST.  
E. 4TH ST.

NEGRO SCHOOL  
W. 4TH ST.  
E. 4TH ST.

SCOTT CHAPEL  
M.E. CHURCH  
MEEROI  
E. 5TH ST.  
E. 4TH ST.

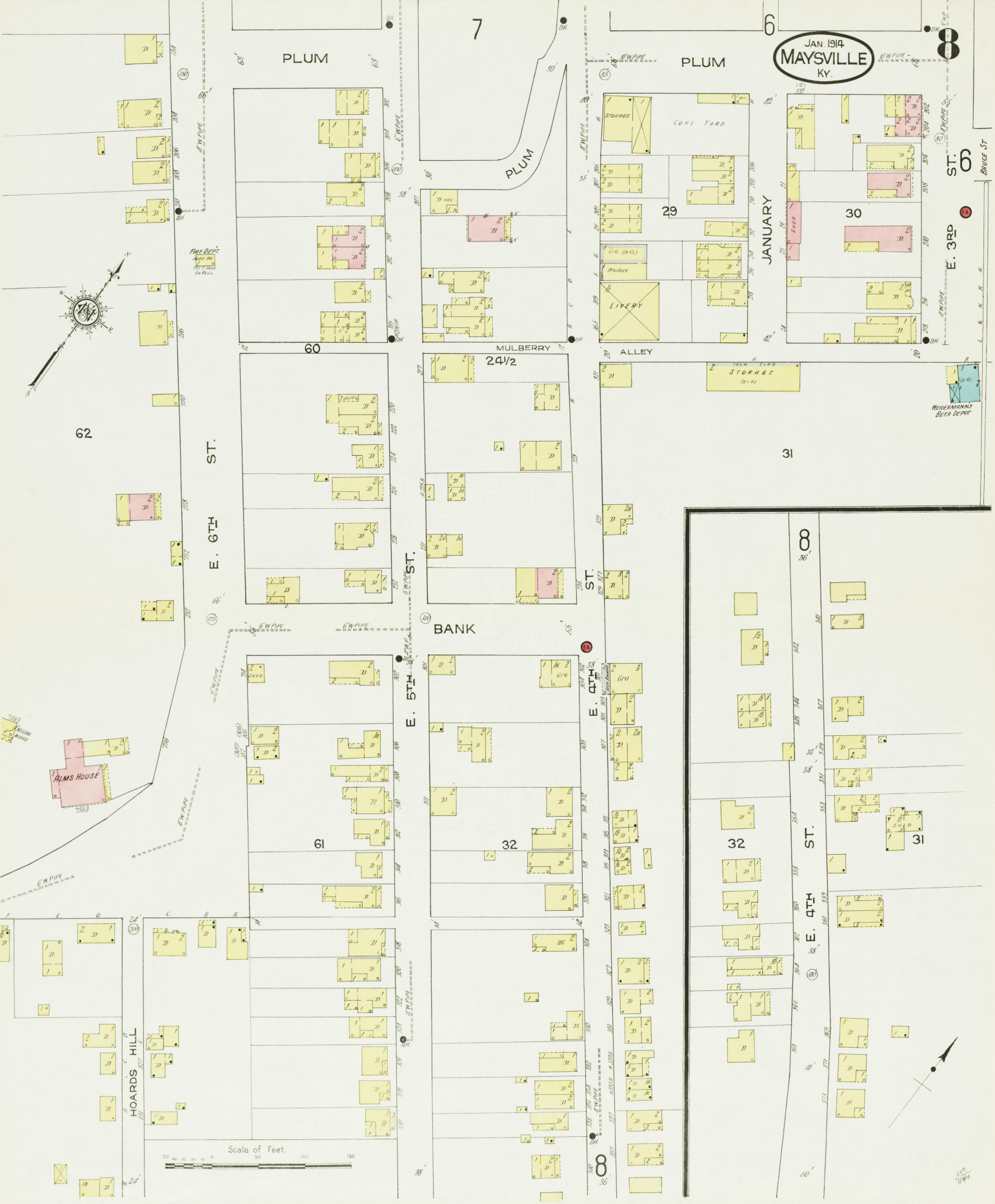
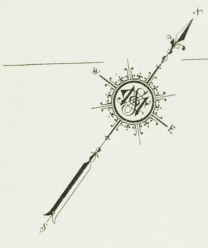
PLUM NOT IMPROVED

PLUM





JAN 1914  
MAYSVILLE  
KY.



Scale of Feet  
0 20 40 60 80 100 120 140 150

ST. 6  
BRUCE ST.

E. 3RD

ST. 8

ST. 31

E. 4TH

ST. 32

ST. 31

ST. 30

ST. 29

ST. 28

ST. 27

ST. 26

ST. 25

ST. 24

ST. 23

ST. 22

ST. 21

ST. 20

ST. 19

ST. 18

ST. 17

ST. 16

ST. 15

ST. 14

ST. 13

ST. 12

ST. 11

ST. 10

ST. 9

ST. 8

ST. 7

ST. 6

ST. 5

ST. 4

ST. 3

ST. 2

ST. 1

ST. 0

ST. -1

ST. -2

ST. -3

ST. -4

ST. -5

ST. -6

ST. -7

ST. -8

ST. -9

ST. -10

ST. -11

ST. -12

ST. -13

ST. -14

ST. -15

ST. -16

ST. -17

ST. -18

ST. -19

ST. -20

ST. -21

ST. -22

ST. -23

ST. -24

ST. -25

ST. -26

ST. -27

ST. -28

ST. -29

ST. -30

ST. -31

ST. -32

ST. -33

ST. -34

ST. -35

ST. -36

ST. -37

ST. -38

ST. -39

ST. -40

ST. -41

ST. -42

ST. -43

ST. -44

ST. -45

ST. -46

ST. -47

ST. -48

ST. -49

ST. -50

ST. -51

ST. -52

ST. -53

ST. -54

ST. -55

ST. -56

ST. -57

ST. -58

ST. -59

ST. -60

ST. -61

ST. -62

ST. -63

ST. -64

ST. -65

ST. -66

ST. -67

ST. -68

ST. -69

ST. -70

ST. -71

ST. -72

ST. -73

ST. -74

ST. -75

ST. -76

ST. -77

ST. -78

ST. -79

ST. -80

ST. -81

ST. -82

ST. -83

ST. -84

ST. -85

ST. -86

ST. -87

ST. -88

ST. -89

ST. -90

ST. -91

ST. -92

ST. -93

ST. -94

ST. -95

ST. -96

ST. -97

ST. -98

ST. -99

ST. -100

ST. -101

ST. -102

ST. -103

ST. -104

ST. -105

ST. -106

ST. -107

ST. -108

ST. -109

ST. -110

ST. -111

ST. -112

ST. -113

ST. -114

ST. -115

ST. -116

ST. -117

ST. -118

ST. -119

ST. -120

ST. -121

ST. -122

ST. -123

ST. -124

ST. -125

ST. -126

ST. -127

ST. -128

ST. -129

ST. -130

ST. -131

ST. -132

ST. -133

ST. -134

ST. -135

ST. -136

ST. -137

ST. -138

ST. -139

ST. -140

ST. -141

ST. -142

ST. -143

ST. -144

ST. -145

ST. -146

ST. -147

ST. -148

ST. -149

ST. -150

ST. -151

ST. -152

ST. -153

ST. -154

ST. -155

ST. -156

ST. -157

ST. -158

ST. -159

ST. -160

ST. -161

ST. -162

ST. -163

ST. -164

ST. -165

ST. -166

ST. -167

ST. -168

ST. -169

ST. -170

ST. -171

ST. -172

ST. -173

ST. -174

ST. -175

ST. -176

ST. -177

ST. -178

ST. -179

ST. -180

ST. -181

ST. -182

ST. -183

ST. -184

ST. -185

ST. -186

ST. -187

ST. -188

ST. -189

ST. -190

ST. -191

ST. -192

ST. -193

ST. -194

ST. -195

ST. -196

ST. -197

ST. -198

ST. -199

ST. -200

ST. -201

ST. -202

ST. -203

ST. -204

ST. -205

ST. -206

ST. -207

ST. -208

ST. -209

ST. -210

ST. -211

ST. -212

ST. -213

ST. -214

ST. -215

ST. -216

ST. -217

ST. -218

ST. -219

ST. -220

ST. -221

ST. -222

ST. -223

ST. -224

ST. -225

ST. -226

ST. -227

ST. -228

ST. -229

ST. -230

ST. -231

ST. -232

ST. -233

ST. -234

ST. -235

ST. -236

ST. -237

ST. -238

ST. -239

ST. -240

ST. -241

ST. -242

ST. -243

ST. -244

ST. -245

ST. -246

ST. -247

ST. -248

ST. -249

ST. -250



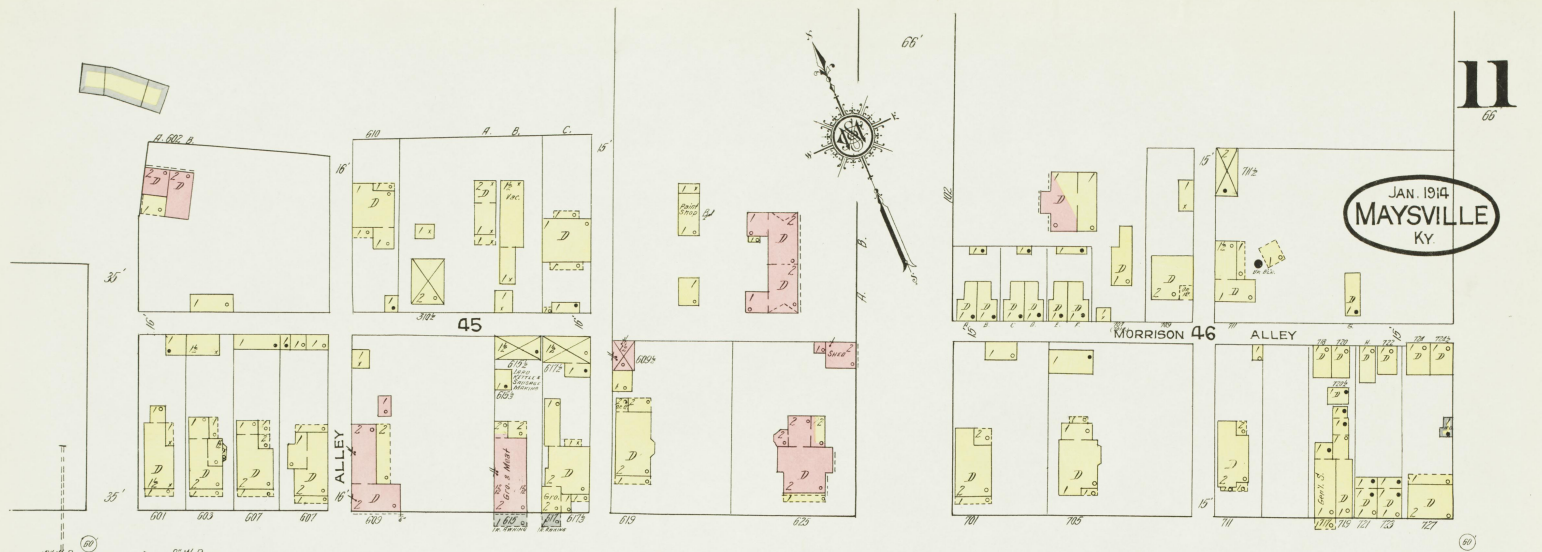








JAN. 1914  
MAYSVILLE  
KY



E. 2ND ST.



E. 3RD ST.

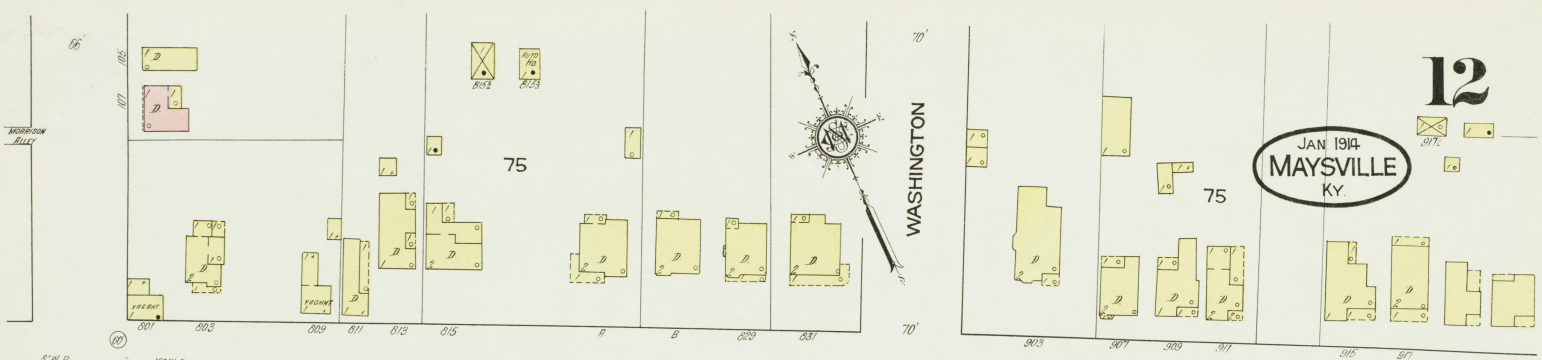


FOREST AV.

Scale of Feet. 0 50 100 150



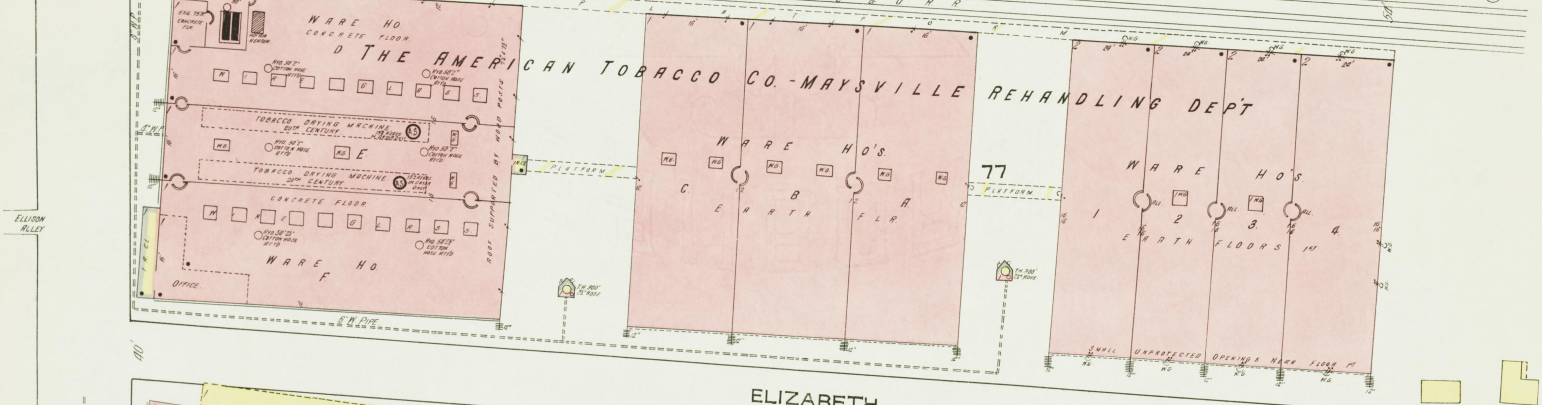
JAN 1914  
MAYSVILLE  
KY



E. 2ND ST.



E. 3RD ST.

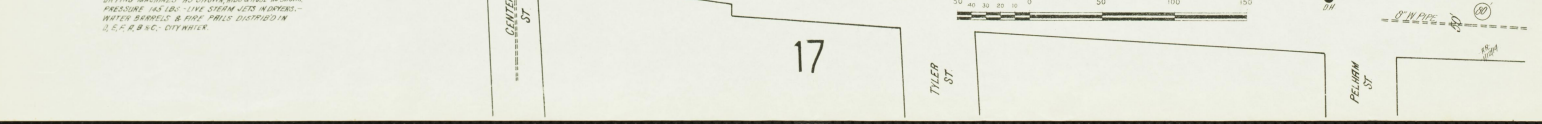


ELIZABETH



FOREST AV.

Scale of Feet



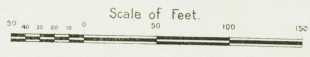
**THE AMERICAN TOBACCO CO.**  
1 NIGHT WATCHMAN, 2 1/2 HOURS CLOCK  
MACHINE ROOMS W.O.E.P. ONE PERSON  
C.R. 1, 12 H.R. POWER STERN, FULL CON-  
CRETE FLOOR ON BLOCKS IN WARE HOUSES  
DRINKING WATER, AUTOMATIC SPRINKLERS IN WARE  
HOUSE, 2 WATER JETS IN WAREHOUSE  
PRESSURE HAS 100 PSI STEAM JETS IN WARE-  
HOUSE, WATER BARRELS & FIRE PAILS DISTRIBUTED IN  
1/2 HOURS, 1/2 HOURS

**FARMERS WARE HO. CO. - LOOSE LEAF SALES WARE HO**  
ROLLING IRON SHUTTERS  
STORAGE SHED  
STEEL SKELETON FRAME  
CONCRETE FLOOR  
EARTH DRIVEWAY  
FULL OF SKYLIGHTS

**INDEPENDENT LOOSE LEAF TOBACCO CO. LOOSE LEAF SALES WARE HO**  
MACHINE ROOMS W.O.E.P. ONE PERSON  
C.R. 1, 12 H.R. POWER STERN, FULL CON-  
CRETE FLOOR ON BLOCKS IN WARE HOUSES  
DRINKING WATER, AUTOMATIC SPRINKLERS IN WARE  
HOUSE, 2 WATER JETS IN WAREHOUSE  
PRESSURE HAS 100 PSI STEAM JETS IN WARE-  
HOUSE, WATER BARRELS & FIRE PAILS DISTRIBUTED IN  
1/2 HOURS, 1/2 HOURS



JAN. 1914  
MAYSVILLE  
KY.



FOREST 18 AV.

ELIZABETH

201

202

77

E. 3RD ST.

WILLIAM WOOD

102

103

BALL PARK

E. 2ND ST.

101

75

104

ST.

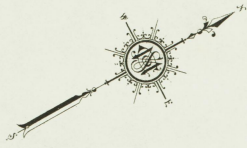
VACANT

VACANT FIELD.

PELHAM ST.

8" W. PIPE





103

105

PROSPECT

E. 2<sup>ND</sup> ST.

106

108

107

COTTAGE

105

20  
E. 3<sup>RD</sup> ST.

CHESTER

AV.

KENTUCKY

THE OHIO VALLEY PULLEY WORKS

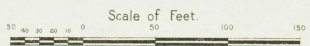
FACTORY

W. Ho. No. 1

LUMBER PILE 10'

LUMBER PILE 15'

MAIN



15





VACANT



SUMMER  
HERTER

303

MAYSVILLE STREET RY & TRANSFER CO.  
CAR DRAW



14

E. 2ND ST.

E. 2ND ST.

304

305

CHESTER

307

306

CARVEL

MAIN

BROADWAY

E. 3RD ST.

308

309

VINE

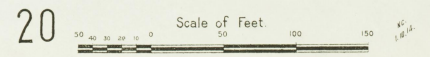
311

310

FOREST AV.

5TH WARD  
PUBLIC SCHOOL

SEDDENS  
GARDEL  
M.E.  
CHURCH





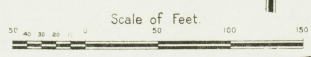
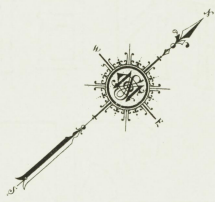
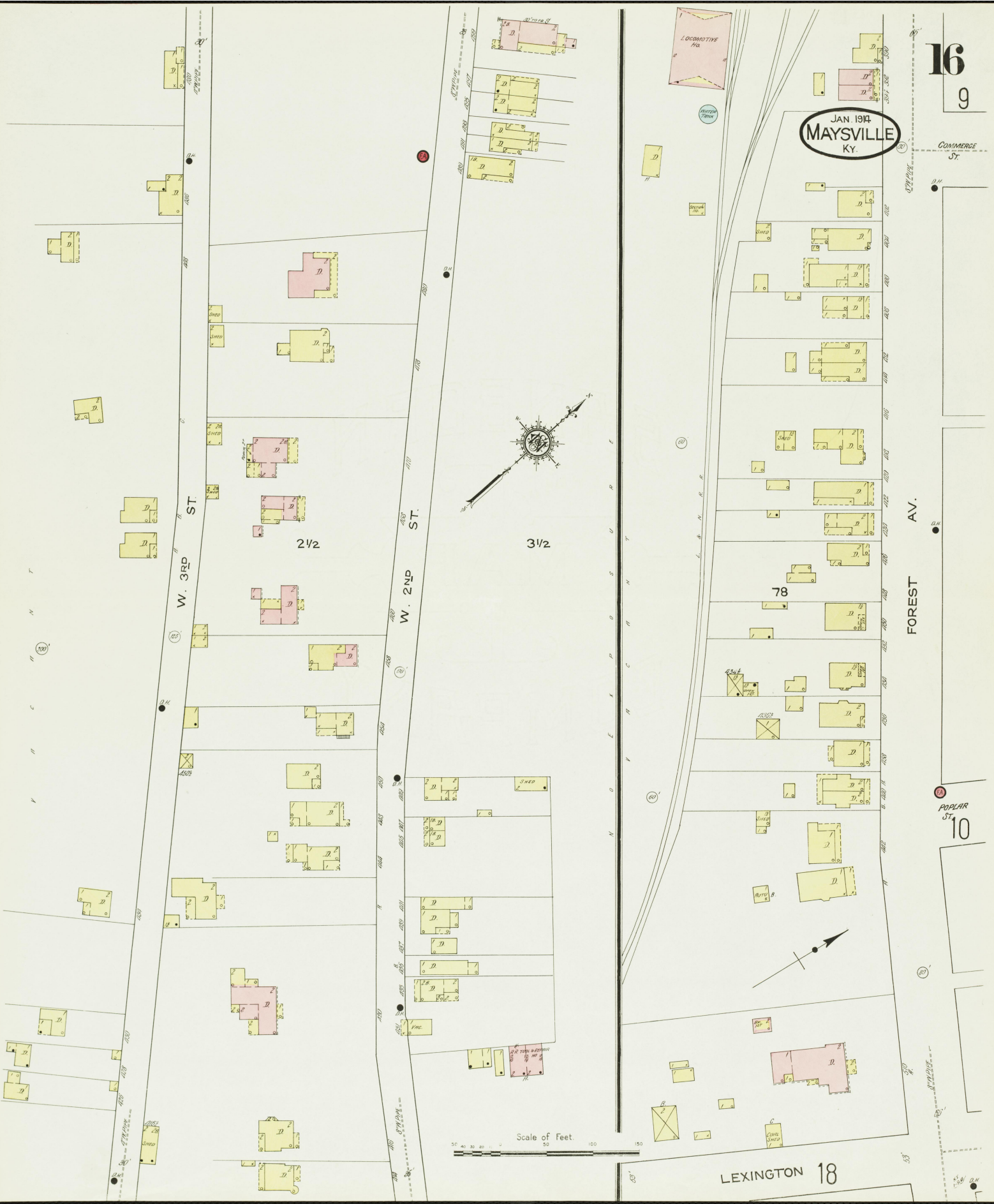
JAN 1914  
MAYSVILLE  
KY.

COMMERCE  
ST.

FOREST  
AV.

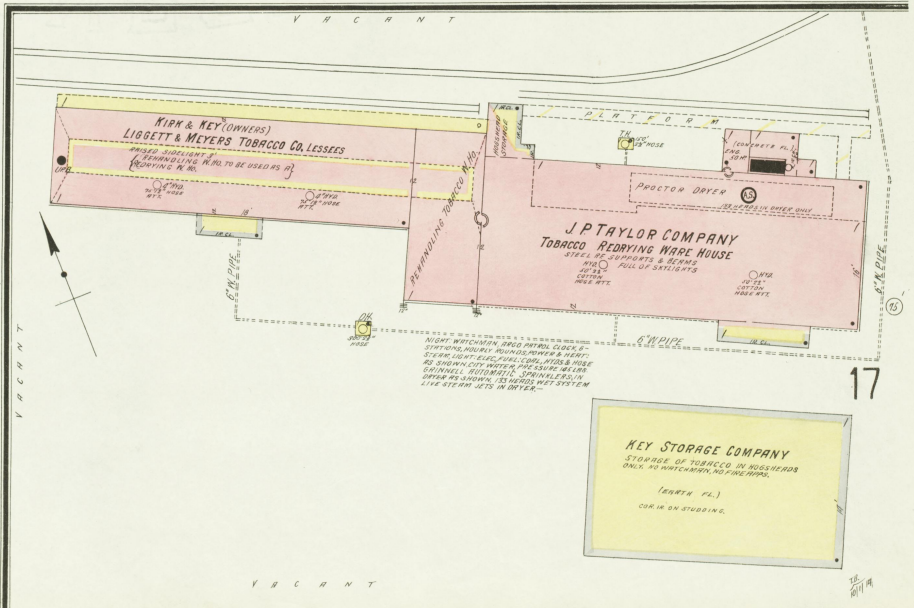
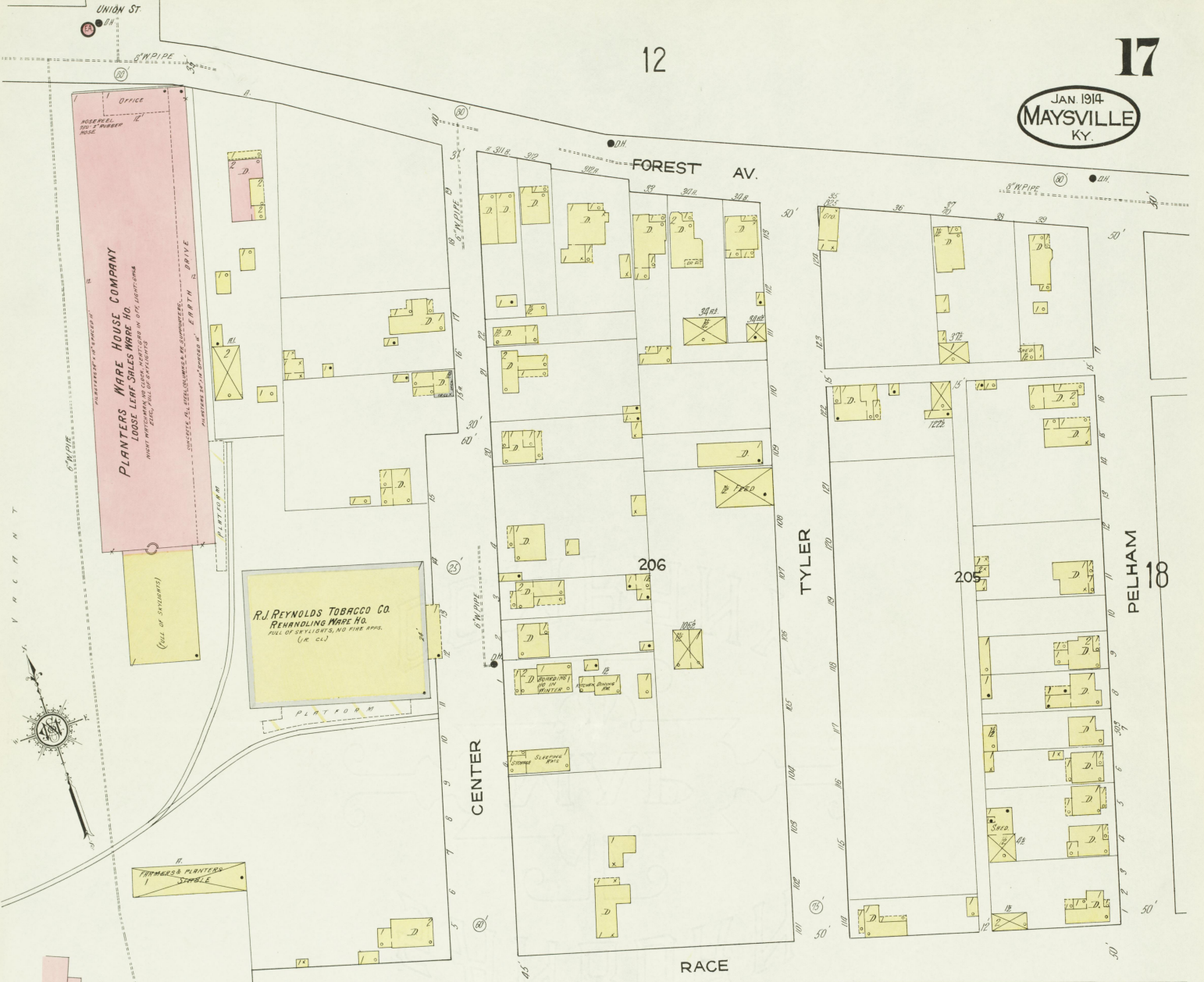
POPLAR  
ST.  
10

LEXINGTON 18





JAN 1914  
MAYSVILLE  
KY.





FOREST AV.

PELHAM

WOOD

204

203

RACE

AV.

CENTRAL

BUCKNER

BROOKS

3A

2A

11

FOREST AV.

HOME WAREHOUSE CO'S  
LOOSE LEAF TOBACCO WARE HO.

WATCHMAN DURING SERVIC  
HARD GAS STOVE LIGHTER BELC  
FIRE & HOSE AS SHOWN 3 SECTION  
CHEMICAL EXTINGUISHERS

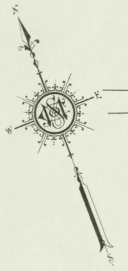
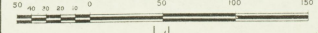
WOOD FLOOR

CONCRETE FLOOR

WAUSAU PL ARBITRARY

NO EXPOSURE

Scale of Feet





18  
BUCKNER

FOREST

AV.

FLORENCE

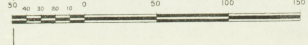
CLARK

BROOKS

STEVENS ALLEY



Scale of Feet.



CASTLEMAN SCHOOL  
No. 1187 -  
HEAT STOVES

2A

3A

4A

V H C H T

850  
7/10/14



PROSPECT ST

14

JAN. 1914  
MAYSVILLE  
Ky.

20

E. 3RD ST



VACANT FIELD

MAIN

15

FOREST AV.

19

CLARK ST.

STEVENS ALLEY

BROADWAY

15

FOREST AV.

E. 3RD ST

20

15 VINE

3A

CARMEL

310

FOREST AV.

312

20

VACANT

VACANT

SCHULER AV.

312

312

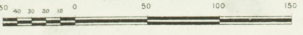
WOODWORKING AND  
SHOEMAKING  
CLARK ST.  
M. R. HIRSCHFELD SHOE FACTY  
MIRRO WOODEN SOLED SHOES  
NO WAX LUMEN NO FIRE AIDS  
LIGHTS UNDER ALL KEYS-STRIVES  
TYPICAL STEAM  
LUMBER SHED

FOUNDATION

BRIST MILL  
ESTABLISHED  
1858

NO EXPOSURE

Scale of Feet.

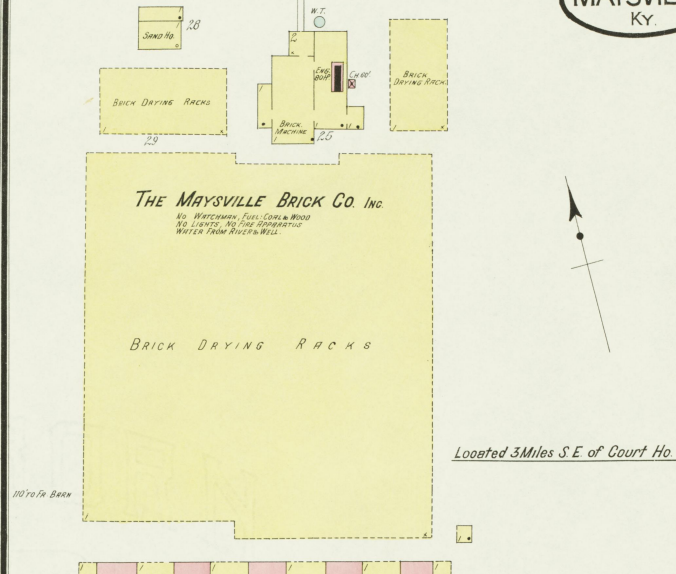
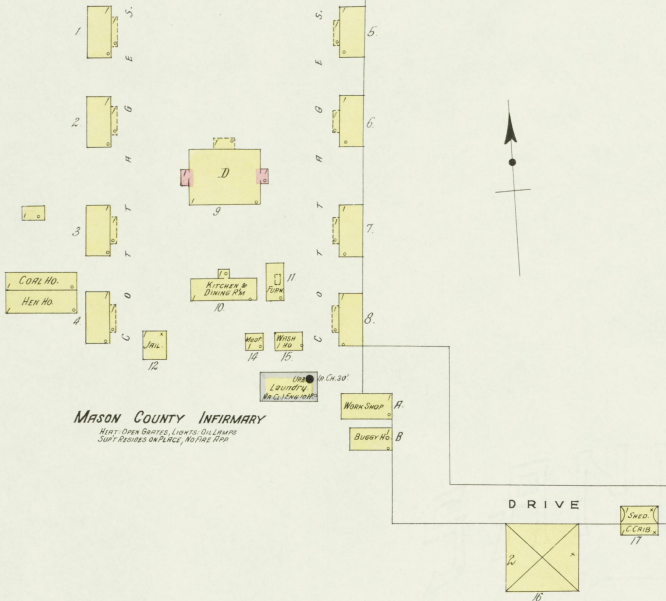


N O

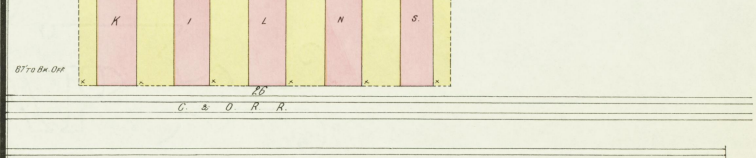
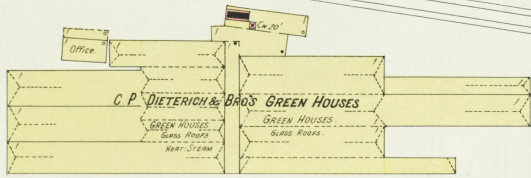
E X P O S U R E



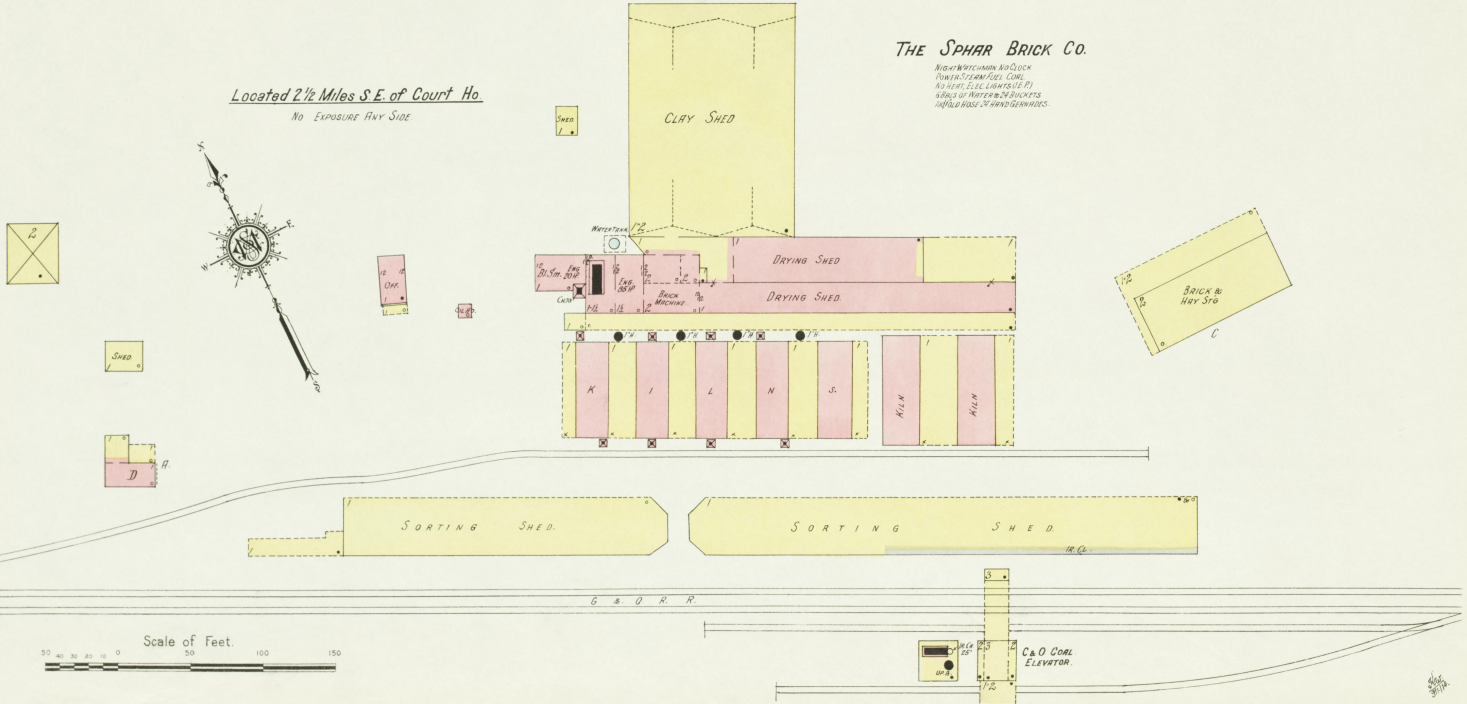
Located 2 Miles S.E. of Court Ho.  
No EXPOSURE ANY SIDE



Located 1/2 Miles S.E. of Court Ho.  
No EXPOSURE ANY SIDE



Located 2 1/2 Miles S.E. of Court Ho.  
No EXPOSURE ANY SIDE





JAN 1914  
MAYSVILLE  
KY

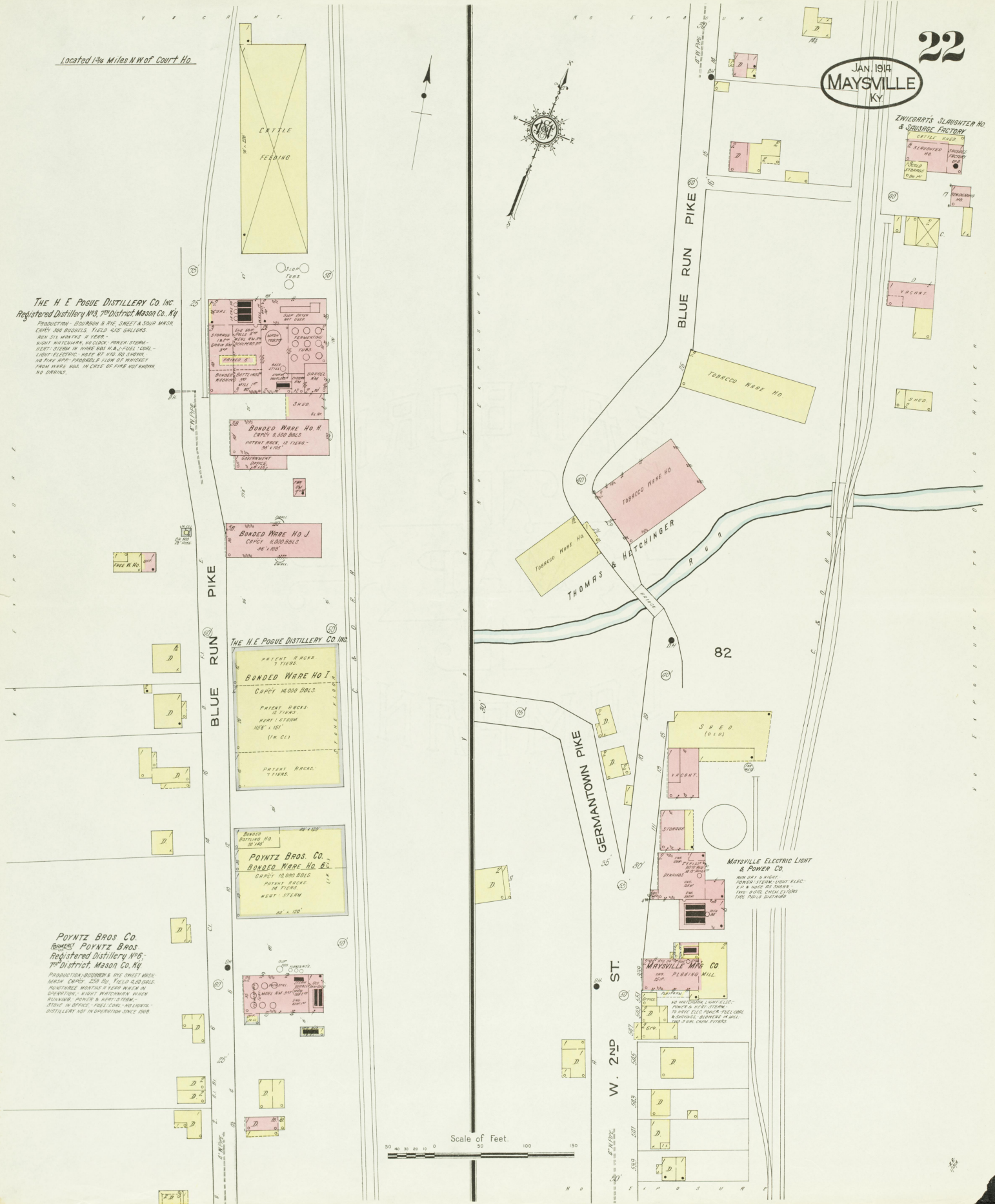
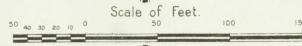
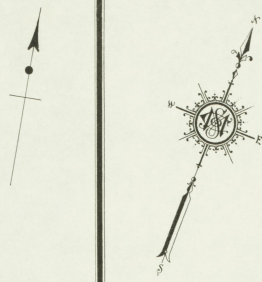
Located 1 3/4 Miles N.W. of Court Ho.

The H. E. Pogue Distillery Co. Inc.  
Registered Distillery No. 3, 7th District, Mason Co., Ky.  
Production - 250000 B & PINE CRACK & SOUR MASH.  
COPRY 500 BUCKLS. YIELD 450 BALLETS.  
RUN 315 MONTHS A YEAR -  
LIGHT MATCHING, WOODS - POWER STEAM -  
HEAT STEAM IN WARE HOS. H.B. - FUEL, LODG -  
LIGHT ELECTRIC. HOS. 87 1/2 IN. 90 IN. 100 IN.  
NO FIRE APP. PROBABLE FLOW OF WHISKEY  
FROM WARE HOS. IN CASE OF FIRE NOT KNOWN  
BY CORNER.

The H. E. Pogue Distillery Co. Inc.  
BONDED WARE HO. I.  
PRIME ROCKS  
COPRY 1000 BALLETS  
HEAT STEAM  
107 1/2 IN. 107  
107 1/2 IN. 107

POYNTZ BROS. CO.  
BONDED WARE HO. B.  
COPRY 10000 BALLETS  
HEAT STEAM  
60 X 100

POYNTZ BROS. CO.  
Formerly POYNTZ BROS.  
Registered Distillery No. 6,  
7th District, Mason Co., Ky.  
Production - 250000 B & PINE CRACK & SOUR MASH.  
COPRY 500 BUCKLS. YIELD 450 BALLETS.  
RUN 315 MONTHS A YEAR -  
LIGHT MATCHING, WOODS - POWER STEAM -  
HEAT STEAM IN WARE HOS. H.B. - FUEL, LODG -  
LIGHT ELECTRIC. HOS. 87 1/2 IN. 90 IN. 100 IN.  
NO FIRE APP. PROBABLE FLOW OF WHISKEY  
FROM WARE HOS. IN CASE OF FIRE NOT KNOWN  
BY CORNER.



ZWIGGARTS SLAUGHTER HO. & CHILLAGE FACTORY  
CATTLE SLAUGHTER  
SHEEP SLAUGHTER  
HORSE SLAUGHTER  
PORK SLAUGHTER

TOBACCO WARE HO.

TOBACCO WARE HO.

TOBACCO WARE HO.

82

SHED (OLD)  
FACTORY

STORAGE

MAYSVILLE ELECTRIC LIGHT & POWER CO.  
RUN DAY & NIGHT  
POWER STEAM LIGHT ELEC.  
1 1/2 IN. 2 IN. 3 IN. 4 IN.  
100 000 200 000 300 000  
FIRE PAILS DISTINISHED

MAYSVILLE MFG CO  
PLASTER MILL

NO MATCHING, LIGHT ELEC.  
POWER & HEAT STEAM  
TO MAKE ELEC. POWER USE LONG  
BATTERIES, BATTERY CHARGE  
AND FIRE ALARM SYSTEMS

W. 2ND ST.