

The **April 2010** GLSO News

A Publication of the Lexington Gay Services Organization

Volume 32 Number 3

Imperial Court April Fun

April brings some great events from the Imperial Court. We kick off the month with the Easter Bonnet Parade and Show at Mia's on Sunday April 4th. Come out wearing your favorite Easter head adornment and enjoy a great show. I am sure we will have prizes for the best dressed and most creative.

The Imperial Court of Kentucky will be hosting, along with the Imperial Court of Cincinnati, the Miss Bone Lick Pageant on April 9th at Crossings. This event is a fun and campy pageant that you will not want to miss.

On April 23rd we have the Second Annual Drag Queen Olympics being held at Pulse Nightlife. If you missed this event last year, do not miss it again. You will laugh until you are crying as the girls compete in different sporty drag categories. Come out and support these great events.

Also this month we will be hosting the Annual Miss Derby Pride pageant on April 28th at Pulse Nightlife. The winner and first runner up will complete our candidates for the Entertainer of the Year Pageant being held in May. Watch for more details on this event.

See more about the court on page 8

GLSO YARD SALE

Save the dates: April 16 & 17, from 8am—3pm at 3559 Lansdowne Dr, Lexington 40517. Rain dates are set April 23 & 24. We are now collecting items to sell. More info: 859-253-3233.

St. Mychal The Martyr Parish

Springtime! What a great time of the year and what a blessed and much needed season of new growth and green grass. We have all lived through a rather trying winter and are all much in need of warm weather and sunshine.

This Sunday, April 4th, is the western celebration of Easter highlighting the resurrection of Jesus the Christ from the dead. At St. Mychal the Martyr church we celebrate this Sunday at 10:30 am with the lighting of the Easter Candle, the proclamation of the Word of God, the Holy Eucharist AND a baptism! Join us at 1033 Industry Road.

On Sunday we will welcome a young man into the Christian community by pouring water over him and baptizing him in the name of the Holy Trinity. This is a very important day for him and for our community and for all of us as we recognize and celebrate new life. All of you are most welcome to join us this Sunday or any Sunday for the Lord's Supper.

Our community is small but strong. We are Orthodox-Catholics and we celebrate the Lord's Supper every Sunday. Our

cont. on pg. 2

Sponsor of the Month

St. Mychal The Martyr

www.stmychalthemartyr.org



859 338-1195



Rev Kenneth Waibel

GAY and Lesbian Services Organization

Incorporated as
The Gay Services Organization
P.O. Box 1172 Lex., KY 40588

www.GLSO.org

GLSO News

Volume 32 No. 4

News Editors and Staff

*Jackie Cobern, Editor
Mary Crone, Judy Sutter
Ginger Moore-Minder,
Dennis Wheatley Sarah Phillips,
David Spencer*

Administrative Assistant
Bill Chandler
859-253-3233

GLSO BOARD

Dennis Wheatley, President
Thomas Collins Vice Pres.
Jane Minder, Secretary
Ginger Moore-Minder, Treas.
Mary Crone, GSA
Jackie Cobern, Editor
David Spencer
Jessica Sucik

Next meeting April 11,
1pm at the GLSO Pride Center
389 Waller Ave., Suite 100
Lexington, KY 40504

communion is open so everyone is welcome to attend and receive. Our ritual may seem a bit strange at first but anyone who has experienced the Episcopal, Methodist, Presbyterian, Orthodox or Roman Catholic services will feel quite at home. For those who have not, know that you are welcome and we will help you understand and participate as far as you like. We are located on the lower floor store front at 1033 Industry Road, Lexington, KY.

If you have questions or would just like to chat email me at kypadre@aol.com or give me a call. All are welcome!

U.S. Census

You should have received a census form in the mail in March. If you have any questions about filling out the census, or need a new form, a census worker will be at the Pride Center Mondays and Tuesdays between 10 and 3. The dates are April 5, 6, 12, 13, and 19. CALL first as these hours may change.

It is important that you fill out this document. All information is kept private; statistics are created to inform government agencies about how many people live in each community.

The information the census collects helps to determine how more than \$400 billion dollars of federal funding each year is spent on infrastructure and services including hospitals, job training centers, public schools, senior services, highways and other-public works projects. It also determines the number of representatives each state has in the U.S. Congress, and is crucial for emergency preparedness.

Every ten years there are some changes in the census. In the past, if a person marked that they were married to a same sex partner, their answer was actually changed. Those marked as "unmarried partner" were not changed. This time, however we choose to identify ourselves, our answers will be counted as written. For more information, see the census article on page 13.



Community News

Research Study

Alicia Fedewa, a UK faculty member in School Psychology, is conducting research on children being raised by one or more LGBT parent. She is focusing on teens ages 14 through 18. She will be interviewing them at the Pride Center at various times convenient to the participants.

Parents can talk to Alicia before giving their consent; a consent form will be provided. Teens will fill out a questionnaire that will take about an hour. The teens will be given a gift card to Best Buy as a thank you for participating. There will be information provided concerning follow up counseling if any of the participants would like to talk to a counselor.

Alicia can be reached at email Alicia.fedewa@uky.edu or 850-257-9338. Please pass this information on to people that might be interested in participating. This is important research that could lead to a better understanding of the experiences of young people growing up in our families.

Pride Prom 2010

The GLSO Gay Straight Alliance for Youth is hard at work planning the fourth annual Pride Prom scheduled for May 28. The theme this year is *Time Travel*. High school groups as well as other participants are designing tables in the style of specific time periods. So far we have tables representing the 80s, the 50s, the 20s, the Victorian era, and the future.

It would be fun to have some of the food we offer at the prom be from specific times also. Surely there are some creative cooks out there that would like to offer their skills. Something easy to eat with fingers would be best.

We will also need some adult chaperones and there will be a get together for all those interested in early May. Contact mary at 859 266-5904 or email marycrone@insightbb.com about food or chaperoning.

Prom cancelled in Mississippi—page 8

Lexington SummerFest Auditions

Summerfest will be holding auditions for **RENT, The Musical** the weekend of April 9th at the Schmidt Vocal Arts Center, 412 Rose Street, Lexington, KY 40508. General auditions will be held by appointment on Friday, April 9th and Saturday, April 10th. Callbacks will be on Sunday, April 11th. Audition appointment times are as follows:

Friday, April 9th
5 pm - 7 pm 7 pm - 9 pm

cont. on pg. 4



"I will provide you with the excellent service, honesty and support that you alone deserve!"

Teresa Combs
Realtor, ABR, GRI, QSC

Cell/Text: 859-489-1150
Office: 859-422-2000
Email: teresacombs@remax.net
Web: www.teresacombsrealtor.com



RENT Auditions *continued from pg 3*

Saturday, April 10th

10 am - 12 noon 12 noon - 2 pm

2 pm - 4 pm 4 pm - 6 pm

You must be available for the entire two hours. To schedule an audition appointment, visit the director's website, www.traceybonner.com, and click the "audition" button at the top. You will receive a confirmation email or phone call regarding your audition time.

Please be prepared to sing 16 bars of either a ballad or up-tempo song and bring your own sheet music. We are looking for rock vocalists who possess a strong stage presence. We are specifically looking for a multi-racial cast, but we are not looking to replicate the traditional castings of the Broadway production.

You will also be asked to participate in a movement audition. Please dress accordingly. This production of RENT will likely contain more movement/dance than the original Broadway incarnation.

Bluegrass Women's Network

The Bluegrass Women's Network is a social group for women who identify as lesbian. Membership is free and there are no obligations. We use a private/hidden Yahoo group website to announce events. We also have a phone list.

Members plan a variety of activities such as potluck dinners, plays, movies, parties, card games and whatever else we manage to dream up! You choose to attend those events of interest to you. Our goal is to enrich our lives with great friendships.

Interested in joining? Go to <http://groups.yahoo.com/group/thebluegrasswomensnetwork/> and apply to join. Facilitators are Debby Hemstock and Lynn Matlock.

Bible Study Group

The gay affirming Charismatic Christian bible study is meeting every Sunday at the Pride Center at 10:30am. You can email Karen at ktaylor@fewpb.net, for more information.

You are invited to a showing of *The Passion* on Good Friday, April 2, at 7:00, at the home of Karen and Lisa. For directions contact ktaylor@fewpb.net. We will have snacks, but bring your own drink.

Easter Sunday, after Bible study (around noon), we will be going to Golden Corral for dinner. Come on out and eat with us even if you can't make the study.

Our mission statement: We are called to reach those who have been wounded by the church with the love and grace of Jesus Christ, to proclaim liberty to those who have been held captive to the false idea that we can not be gay and Christian, and to proclaim God's love to all. We pledge our love and commitment to Jesus Christ and to one another, that we might be the beacon of light to everyone in the greater Lexington area, with specific focus in the GLBT community.

LGBT Radio Show

Announcing Kentucky's only LGBT radio Show, *OUTloud*. The show airs on Wednesdays from 8am to 9am on WRFL, 88.1 fm. You can also stream the show online at www.wrfl.fm.

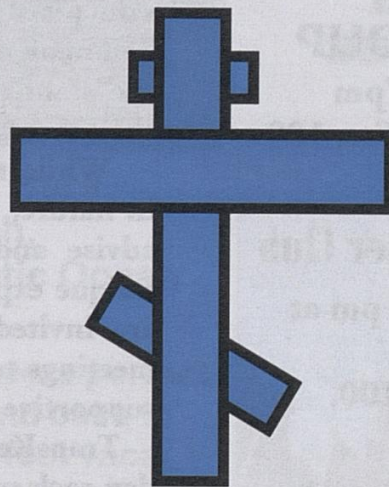
It will be based on a talk show model but they are not yet able to take calls on air. Listeners can phone in comments off air at 859-257-9735. Congratulations to Vincent Purcell, Bo Burnett, and Watson for getting this underway. www.outsourceoutloud.org for more information.

St. Mychal the Martyr Church

1033 Industry Road, Lexington, KY

859-338-1195

Sunday Service – 10:30 AM



St. Mychal the Martyr Parish is the only Christian Church in the Central Kentucky area that openly supports GLBT issues including Gay Marriage. The parish is totally inclusive, accepting all persons and presenting their needs and gifts to God and to the world.

Founded in September of 2003, under the patronage of Fr. Mychal Judge, martyred in the 9/11 terrorist attack on New York, St. Mychal Parish is part of the Orthodox-Catholic Church of America – an American Orthodox Church founded in 1841. Our parish philosophy: “Welcoming all People Equally” regardless of personal history, gender, orientation or marital status. Our sacraments are open to all persons and we gladly ordain women and men to priesthood for the sake of the community.

Come and join us for worship!

Pride Center

389 Waller Ave., Ste. 100 Hours 10am to 3pm M, Tue, Thur, & Fri.

Phone 859-253-3233

Young Adult Group

First and Third Sundays at 5 pm
Pride Center, 389 Waller Ave.
Tyler: trumpetbnddork@gmail.com

DISCUSSION GROUP

Every Wednesday at 7pm
Pride Center 389 Waller, Ste. 100
All Are Welcome

Lex. Lyons Levi & Leather Club

Monday March 8th at 7 pm at
The Pride Center,
389 Waller Ave., Ste. 100.

Insight Group

Insight is a social group for gay and bi men. We usually meet on the first and third Fridays of the month at the Pride Center at 7pm. This month we are skipping the second meeting which is our Game Night.

On April 2, we will have our usual potluck and movie night. If you can't bring a dish, just bring yourself. The more, the merrier. Two meetings will resume in May. Anyone who is interested in organizing a game night open to the whole GLBT community, please email Josh at beautifulsouls78@aol.com

GLSO News On-Line

To receive the e-newsletter send an email addressed to: newsteam@glso.org. Put "on-line newsletter" In the subject line.

TransKentucky

TransKentucky is a support, social, and resource group serving Lexington and Kentucky. The group provides a safe place for transgender individuals and people who feel they do not fit into the standard gender norms to express their true selves.

While the group is not therapeutic in nature, we can provide information, advise and share resources from our unique experiences. Family and friends are invited and encouraged to attend meetings to gain understanding and be supportive of their loved ones.

TransKentucky meets the first Saturday each month at 7:30pm, doors open at 7pm. Meetings are free. You may dress however you feel comfortable. For information contact TransKentucky@gmail.com or call 859-963-6606.

PFLAG

There is a group working to establish a local PFLAG (Parents, Friends & Family of Lesbians and Gays) chapter. They will be meeting on the first and third Sundays at the Pride Center, 389 Waller Ave. Email Sandy Linville at kylinvilles5@insightbb.com if you are interested.

Once they are organized, this group will be a great resource for people who need information and support as well as a way to give support to LGBT friends and family members.

GLSO Beach Vacation Raffle
Pawley's Island South Carolina
Sat. Oct. 2 - Sat. Oct. 9



Imagine Yourself Here
top floor porch,
overlooking the Atlantic Ocean

“The house and scenery were perfect and projected harmony and calm to each of us. It was the perfect vacation. Thank you GLSO for this special gift.” *Betty (last year's winner)*



GLSO is raffling the second floor apartment of a beautiful home in a great location. The house sits between the ocean and a salt water estuary/bird sanctuary; there are views of the water from all but one room in the house. The second floor apartment is best suited for four couples, or 8 adults who share rooms. There are extra beds if 3 people want to share a room (Limit of 12 people). There are four bedrooms, a living and dining area, game/reading room, and a kitchenette. A dock in the “creek” behind the house for fishing.

Check in 4:30 Sat., Oct 2. Check out 10 pm Sat., Oct. 9.

Walk out the front door and jump in the ocean. The water is great in October!



The Cancelled Prom & The Humanists

The Itawamba County School District in Mississippi made headlines in March by canceling the school prom for the Itawamba County Agricultural High. A lesbian student, Constance McMillen, wanted to bring her girlfriend as her date.

The school board's first decision was to bar McMillen from the prom. The American Civil Liberties Union (ACLU) of Mississippi became involved and demanded the school reverse its policy. The school board responded by cancelling the prom. Constance and the ACLU have probably been blamed for the cancellation of their prom.

The American Humanist Association (AHA) has offered to plan and fund a prom for all the students in this school. "It's shameful that closed-minded members of the school board are prepared to deprive an entire class of students their prom over their outdated religious mores." said Roy Speckhardt, Executive Director of the AHA. "People can hold to any belief or no belief in this nation, but the school board misuses their position when they try to impose their beliefs on the student population in Itawamba."

"Humanists can also bring resources to the table that will defend students from a repressive school board," added Speckhardt. AHA members Todd and Diana Steifel made a \$20,000 grant available to the AHA for the purpose of holding a prom in Itawamba County.

Humanists have a history of speaking up for the rights of all. The AHA was among the first to support civil rights, equal pay for equal work, and the right of same-sex couples to marry. Recently the AHA launched the LGBT Humanist Council to advance equality

for lesbian, gay, bisexual, and transgender people and their families. See www.lgbthumanists.org.

There is a Humanist Group that meets regularly at the UU Church, 3564 Clays Mill Rd. Their next meeting is Wed. April 14, at 7pm in the Richard Allen House, to the side of the church. There will be a discussion on "The Evolution of Human Spirituality." What do you mean when/if you use the term "spirituality"? For info contact Dick Renfro at frickdan@windstream.net

The Imperial Court of KY

The Imperial Court of Kentucky joined paws with the Scott County Humane Society for the First Annual Wags and Drags held at Bellini's. Over 150 people attended the event which raised \$5,000. For many of the attendees it was the first drag show they had ever seen and by the end of the evening they couldn't wait to hear about our upcoming events.

When Emperor Wes and Regent Empress Nicole stepped up last June they wanted to reach out into the community and let everyone know more about the Imperial Court of Kentucky. The Wags and Drags event is one example of how successful they have been. The Court has joined forces with the community and has raised \$70,000 since June of last year.

The College of Monarchs is busy planning Coronation 29 which will be held on June 6, 2010 at the Hilton Hotel downtown. Make your plans now to attend the weekend of events and show our out of town guests what a wonderful community we have here in Lexington. We will be hosting the 45th Anniversary Gala of the International Court System, which means a lot of out of town guests here to support our local bars and restaurants.



Come out & join
**The Imperial Court
of Kentucky**

for all of our fabulous April events!!!

Miss Big Bone Lick

Friday, April 9th Crossings Lexington

2010 Drag Queen Olympics

Friday, April 23rd Pulse Nightlife

Miss Derby Pride

Wednesday, April 28th Pulse Nightlife

Net proceeds to benefit the charities of The Imperial Court of Kentucky

Signs of the Time

By Kay Passa

ARIES (March 21-April 20):

Though slow to start, this month promises to be a good month, professionally. Your work will receive the attention it deserves from your superiors and much that has gone unnoticed shall now be recognized. Your social life will be lively this month and you may find yourself sampling a lot of flowers. However, you should settle down near the end of the month and frequent one bloom more than others in your Spring garden.

TAURUS (April 21-May 21):

This month calls for some rest, relaxation, and introspection. Quiet times with a close friend or partner will be the staple of your social diet this April. Enjoy the quietude.... Things start picking up near month's end. Money or gifts may come your way. Travel, exposure to other cultures, and an expansion of your social network will inspire you, broaden your mind, and stimulate your idealistic nature.

GEMINI (May 22-June 21):

This will be a good month for you, Gemini. Work will go smoothly and you'll find support from supervisors. A close friend or partner will keep you content and very sated. You may want to take him/her on a small getaway in the latter half of the month. April should be a very happy time for you. However, it is advised that you keep your impulsiveness on a short leash.

CANCER (June 22-July 22):

April should prove to be an excellent month, professionally. Your opinions and suggestions will be called to center stage and you'll find the ability to communicate ideas coherently and explicitly comes naturally. This will be noticed by the proper people at work. Socially, you'll find happiness, as well.

You'll shine with confidence and intensity. However, my dear crustacean, flings could become more serious and complicated than anticipated. Watch your boundaries and temper some of your flirtatiousness.

LEO (July 23-August 21):

April brings a lot of ups and downs for you, Leo. In the first half of the month, your energy level is low and could invite colds or infections. By mid-month, the people in your life buoy you up, to some extent, and you bounce back to enjoy the second half of April. Quiet times with close friends will mellow your social activities. Work will progress smoothly and you may incur monetary gains after the 21st. Share your thoughts with others but watch that you don't drift from feeling confident to projecting an air of superiority.

VIRGO (August 22-September 23):

Love! Its blooms entrance you! If already in a relationship, security and a renewed sense of oneness will bring contentedness and joy to your partnership. If single, you may well bump into Mr./Ms. Right, so keep alert! After the 15th, you may incur a monetary gain but USE CAUTION! Consider all outcomes before investing money. Not all opportunities are as perfect as they initially appear.

LIBRA (September 24-October 23):

Librans will find April to be a month of "normalcy". Your energy levels will be low early in the month. Work will be satisfying. April will bring a return to "normalcy". Your energy levels will be low early in the month. You may feel you have something of import to say but weigh your words carefully; things said may be misinterpreted or misconstrued, bringing you down. Things will return to a more familiar pace after the 21st. Romance may find you at month's end.

SCORPIO (Oct. 24 - Nov. 22):

April should be great for you, Scorpio. You will excel in communications and relationships. Work will be very rewarding. You will learn much and develop new skills. Beware of ego and self centric thinking, however. Your words *will* be heard. Personal relationships will flourish, possibly surrounding your work environment. The latter half of the month will find you enjoying friends and partners. It would be an opportune time to learn, study, and grow. Consider taking a course or two in an educational setting in your community. You are open to new ideas and perspectives.

SAGITTARIUS (Nov. 23 - Dec. 22):

Enjoy yourself, Sagittarius! April barrels in, bringing you confidence and excitement. Investments could prove to be lucrative. Be careful not to overspend! Finances may be more easily handled with help from family or through real estate ventures. A close friend or partner may offer advice—listen to it! Creativity is at a high point. Your mood and ego will benefit from this upsurge of positive energy.

CAPRICORN (Dec. 23—Jan 20):

Home and community are uppermost in your life this month as you wax nostalgic and sentimental. You work earnestly to maintain peace and harmony at home. Meditation and open communication enrich your relationships with those close to your heart. Either a real estate venture or some form of business transactions based in your home could provide unexpected relief to financial worries. Relationships and their fundamental elements (i.e., loyalty, mutual support, or...commitment?) will be examined and reassessed. After the 20th, friends and partners bring joy and contentedness.

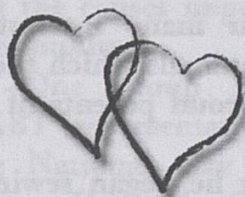
AQUARIUS (January 21-February 19):

Wow, Aquarians, April rocks for you! Work and leisure will be equally re-

warding. You will find your job demands easily navigable and this will impress your superiors. Resolutions to conundrums will magically manifest themselves. You excel at problem-solving and constructive mediating. Imagination and creativity will come effortlessly. Romance will be your companion as the month winds down. Enjoy!

PISCES (February 20-March 20):

The good life will dominate your days in April, dear Pisces! Money matters are prominent and some financial security could be found with the help of a friend. Love and relationships will be met with confidence but *tread lightly*; don't move too fast or you could jeopardize future happiness with a romantic interest. Play it cool.



*"Keep the Love you Find,
Get the Love you Want."*

Jessica Bollinger, LCSW
Imago Relationship Therapist
EMDR Trauma Work
Couples, Family, Individual
Imagoconnection.com
859.552.6533

*Monthly Workshops for Couples
check web site or call for information*

Spotlight on the Beautiful People... *by Helena Handbasket*

This column shines the spotlight on people in the community that deserve recognition. Beauty is not always skin deep and these "beautiful people" either devote their time and energy to a worthy cause or just plain make our lives better by entertaining us. Either way, it is time that they are recognized for their talents and efforts.

Our April spotlight shines on someone that helps all of the rest of us in the "performance" arts to dress so fabulously. I am speaking about none other than Patrick Howell. Patrick is originally from Cincinnati but had been in Lexington for just over two years when he and his partner, Troy, decided that Lexington would be their new home. Among their many interests, they share a love of animals which they prove by being the proud parents of 5 dogs and 7 cats.

Patrick says that he began sewing at age 23 just after the death of his sister when he got her sewing machine. Since then he has made outfits / costumes for such names as Paige Davis (of Trading Spaces) and Sandi Patti, not to mention many drag performers all over the nation.

He now owns and operates his own business called "Designs by Patrick". Patrick admits that he worships at the alter of Bob Mackie and also loves the designer Alexander McQueen. He would love to design an outfit for Lady Gaga. She loves "costumes" rather than "just clothes" which is exactly what Patrick loves to create.

We are very lucky that on the evenings of May 7th and 8th at Buster's, there will be a showcase featuring Patrick's work in a show entitled 'Passing; Fashioning Drag'. This show is being produced by the Art League and part-

ners, Lexington Fairness and The Imperial Court of Kentucky. The curators will be Kurt and Kremena of Passing.



As of the print date, there are 19 artists scheduled to perform including Hurricane Summers, Chelsea Pearl, Sasha Grant, Georgia Peach, as well as yours truly, Miss Helena Handbasket. There will also be performers from out of state including Candi Stratton, Tracie Lords, Nina West, Scarlett Fever, and Wendy Williams.

This should really be a good time so don't miss it. There will be an exhibit of some outfits made by Patrick as well as a display of photos at the Art League between April 23rd-June 26th. For more information on the show, exhibit or tickets, contact Kurt Gohde at kgohde@transy.edu or Kremena Todorova at ktodorova@transy.edu

Patrick's favorite music to listen to is dance music but more specifically likes to listen to "Army of Lovers" and Sarah Brightman. His favorite author is Dean Koontz; favorite color, blue; favorite movie, *Orlando*; favorite TV show, "Medium"; favorite actress, Meryl Streep; and dream vacation would be going to Greece, and seeing the ancient ruins all over the world. , Playing Abba music the whole time would make it perfect. (Hmmm... okay.)

Patrick says that the biggest misconception about him is that he sews exclusively for those that he already knows. That couldn't be more false. He loves to get

Continued on next page

new clients because it challenges him to create something new for someone that he has just met. Stepping outside of the box is important to Patrick and keeps him fresh as a designer.

He says that he appreciates everyone that comes to him and entrusts him to create something for them and he looks forward to more opportunities and challenges in the years to come. Patrick most wants to be remembered for the work he has done and hopes that his costumes last the test of time and are enjoyed for decades to come.

As always, I ask that you finish the following sentences: The world would be a better place if... "everyone would count to 10 before they react to a situation." Lastly, I strive to make the world better by "helping to make people look their best, which hopefully, helps them to feel better about themselves." Well, Patrick, I know I love what you have made for me and I appreciate all of your hard work. Thanks for all that you do.

*** If there is someone in the community that you feel deserves to be honored in this column, send your request to AdvicefromHelena@aol.com and let's be myspace friends. Look me up at <http://www.myspace.com/helenah>

Count and Be Counted!

**Craig Cammack, Chairman
Lexington Fairness**

It's that time of the year again. Actually, it's that time of the decade again! Yes, the census is back and this is the chance for every citizen to be counted. The census is important, as it determines the number of seats our state occupies in the House of Representatives. Additionally, the census provides vital information for advocacy, researching markets, locating pools of

workers, and so much more. In short, the census is critical and we hope you will all participate. But, how can we ensure the LGBT community is represented in this year's census and those in the future?

You should have recently received a census form in the mail. With ten easy questions, which the Census Bureau claims can be completed within ten minutes, you can make a difference. If not turned in by April, you may receive a visit from a census employee who will ask you the questions in person.

Either way, you can represent the LGBT community in the census. Starting in 1990, the option of designating yourself as an unmarried partner was added to the questionnaire. This has provided valuable information for LGBT advocacy groups in help furthering the causes important to the LGBT community.

One group helping to further LGBT representation was formed by the National Gay and Lesbian Task Force. Queer the Census is working to ensure the LGBT community is participating in the census. You can identify yourself as an unmarried partner, or you can choose to refer to you and your significant other as spouses (it's all up to you!).

According to Adrienne Critcher of PACE, a Louisiana-based LGBT organization, "Same-sex couples who are married, or consider themselves to be spouses, can identify one other adult as a 'husband or wife.' Other same-sex couples may instead decide to use the term 'unmarried partner.' In general, people who identify as unmarried partners are in a close personal relationship but are not married or do not think of themselves as spouses. Census data are based on how individuals self identify. This includes same-sex couples who live somewhere their

Continued on next page

Lexington Fairness *continued*

relationship is not recognized."

Even though you may identify yourself as a spouse or unmarried partner, Queer the Census is working to ensure that the next census in 2020 will include questions allowing citizens to identify their sexual orientation. This information will provide accurate and detailed analysis of the LGBT population in the United States. With this, policies and laws affecting our community can be advocated and lobbied more effectively, having critical and accurate data to utilize.

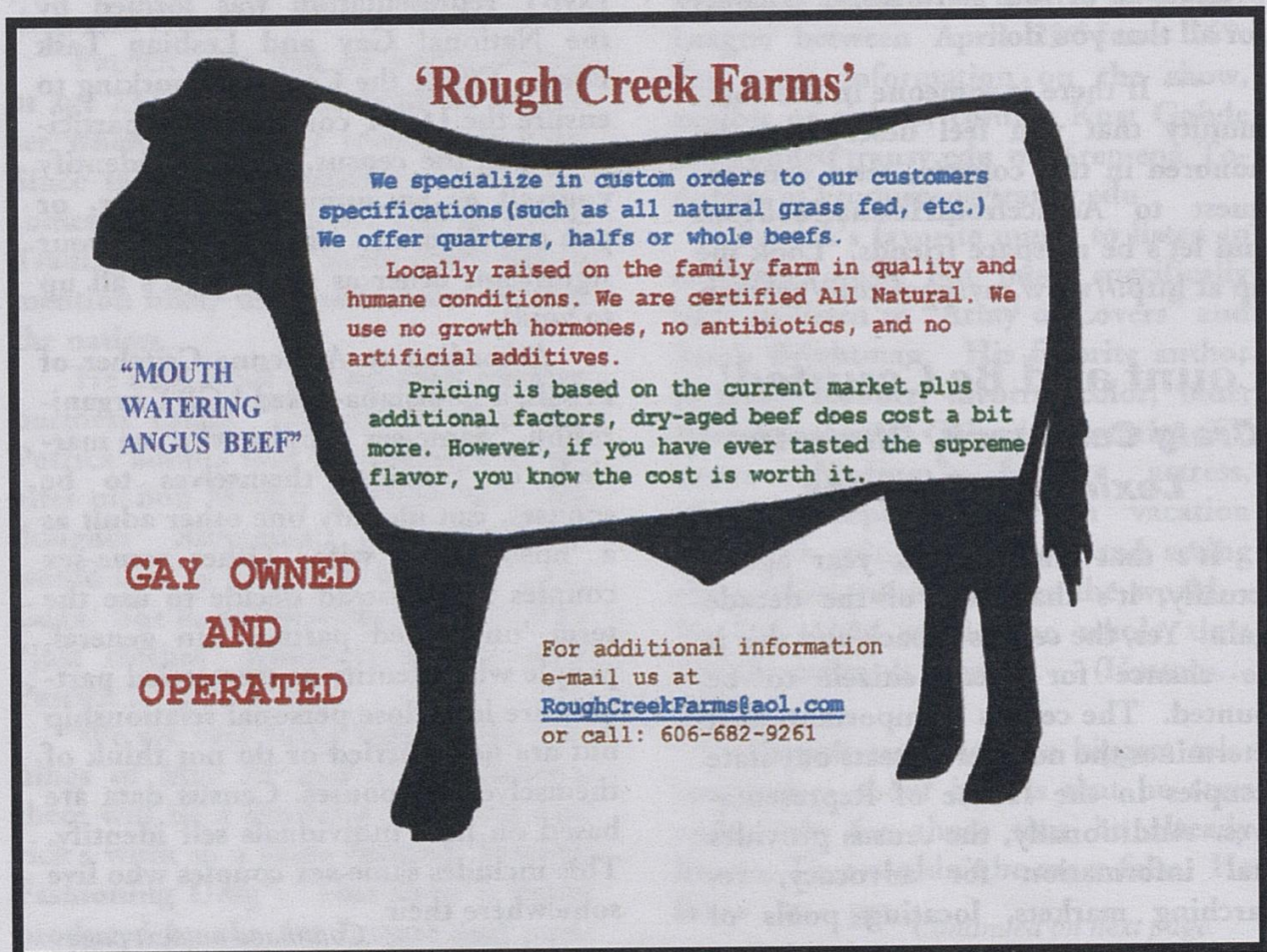
As the organization states, "LGBT people are basically invisible in the census, which is THE survey that is designed to accurately reflect the diverse reality of America's population. Beyond being downright ridiculous, it's also a big problem. The data collected has a direct impact on issues that are critical

to every American – issues like health care, economic stability and safety. When LGBT people are not counted, individuals, families and communities suffer."

So, as you open the census form you recently received, know that you have the right to represent yourself and your loved ones as you choose. Whether you see yourself as single, living with an unmarried partner, or living with your spouse, it is truly in your hands. However, you can assist with making the census more comprehensive and update it to include the LGBT community. Change takes time and now is the time to start.

For more information regarding ways to change the census, visit www.queerthecensus.org

Questions about the census? Census worker at the Pride Center. see page 2 or call for times.



'Rough Creek Farms'

We specialize in custom orders to our customers specifications (such as all natural grass fed, etc.) We offer quarters, halves or whole beefs.

Locally raised on the family farm in quality and humane conditions. We are certified All Natural. We use no growth hormones, no antibiotics, and no artificial additives.

Pricing is based on the current market plus additional factors, dry-aged beef does cost a bit more. However, if you have ever tasted the supreme flavor, you know the cost is worth it.

"MOUTH WATERING ANGUS BEEF"

GAY OWNED AND OPERATED

For additional information e-mail us at RoughCreekFarms@aol.com or call: 606-682-9261

Walt Whitman

An American Poet

by mary crone

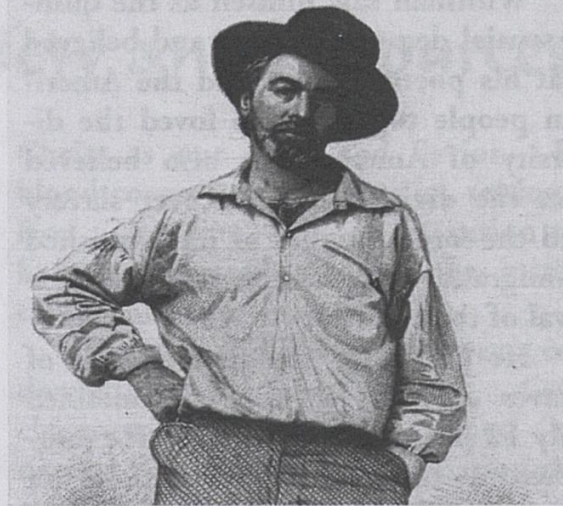
Walt Whitman is recognized as one of the most original and influential American poets. With the publication of his most famous work, *Leaves of Grass*, in 1855, Whitman rejected the metric and rhyming patterns of traditional poetry and wrote in the rhythms of spoken language. He was criticized for this innovative technique, for his sexual explicitness, and for his unusual themes.

Since reading Whitman's poetry for the first time in high school, I have assumed that Whitman was commonly acknowledged to be a gay man. (My high school English teacher brought in some of his poetry that was in praise of male bodies. In 1963!) Many biographers and critics, however, have hesitated to label him as homosexual, saying that there is not enough evidence in his poetry or his journals.

In *Walt Whitman: A Gay Life*, Gary Schmidgall presents evidence of the poet's vibrant sexuality and details Whitman's sexual and romantic relationships. More importantly, he explains how Whitman's attraction to men was at the root of his poetic vision. If someone has read this book or would like to write about Whitman's "gaiety" for the newsletter, we would very much appreciate it. If not, I will do a follow up article.

There have been many books written about Walt Whitman. I have enjoyed learning how Whitman's poetry was a reflection of the social, political, scientific and spiritual movements and ideas of his time.

Whitman's parents were followers of Quakerism and Deism, both liberal views of God and man. Deism is a belief that truth can be determined using reasoned observations of nature without a



need for organized religion. Thomas Paine, Thomas Jefferson and other founding fathers were Deists. Trans

Deism's influence on Whitman can be seen in his sacred view of the natural world, his celebration of the human body, and his inclusion of the scientific viewpoints of the Nineteenth Century. The Quaker belief in the equality of all people was expressed in Whitman's anti-slavery and pro-women's equality references.

Whitman worked for a decade in journalism and fiction to bring attention to the social issues that he believed were dangerous challenges to our new democracy. While editor of a newspaper in New York City, Whitman wrote about "the running sores of the great cities" referring to the extreme poverty particularly of immigrants, lack of sewage systems, vote fraud, and corruption of government. He referred to politicians as "standing back in the shadows, telling lies." The film *Gangs of New York*, set in the time period in which Whitman was writing, vividly portrayed many of the social problems he wrote about.

Whitman began writing poetry in the 1850s. Ralph Waldo Emerson published an essay in 1845 expressing his desire for a uniquely American poet to write about the countries virtues and vices. Whitman set out to be that poet.

Continued on next page

Whitman saw himself as the quintessential democratic poet and believed that his poetry could bind the American people together. He loved the diversity of America but also believed that the divisive struggle over slavery and the large number of impoverished immigrants were threatening the survival of the country.

He published the first edition of *Leaves of Grass* in 1855; it contained only 12 poems in 95 pages. He published a total of eight editions of *Leaves*, adding poems, even whole sections of new work, until the final version in 1892. One edition was banned in Boston, in fact, that is where the term "banned in Boston" originated.

Among the poems in the collection are "Song of Myself," "I Sing the Body

Electric," and in later editions, Whitman's elegy to the assassinated President Abraham Lincoln, "When Lilacs Last in the Dooryard Bloom'd."

The opening lines of *Leaves of Grass* illustrate a number of his favorite themes.

I celebrate myself.

And what I assume you shall assume.

For every atom that belongs to me, as good as belongs to you.

The grass itself was a symbol of democracy, single sprouts could be appreciated individually, made into an instrument when placed between fingers, and also a plant of many species, spread all over the world. We are individuals, but we occupy the same physical world, and share the same atoms.

Whitman once said the *Leaves of Grass* was "essentially a woman's book". He used many words to describe women including intelligent, strong, athletic, brawny, spiritual, brave and sexual. Some found these descriptors shocking. He wrote of the womb as sacred and supported women's right to control their bodies and their sexuality. He thought marriage was a valuable institution but argued against a woman's loss of all rights to her husband.

He was probably most controversial for his focus on the body as sensual, sexual and sacred. Criticism and censorship of his work was directed at the explicit descriptions of the body and the images of heterosexual sexuality. What today is seen as homoerotic verse, was not much commented upon in his day; although I did find a couple of comments about his "unnatural praise of young men. (*To be continued next month*)

THE BACHELOR & BACHELORETTE AUCTION
 a Fundraiser benefiting
 LEXINGTON PRIDE
 FESTIVAL 2010

ArtsPlace
 161 N Mill St
 Lexington, KY

Thursday, April 15, 2010
 Doors Open at 8PM | Events Begin at 9PM

\$10 Admission
 Variety of Bachelors & Bachelorettes to be auctioned off
 Silent Auctions & Live Auctions
 Drag Variety Show

Spiritual Points of View and Resources

Who Love's Ya?

By Karen Taylor

"A life without surrender is a life without commitment." Jerry Rubin

I hope that at least a few of you reading these articles are beginning to see yourself as God sees you. We all need to take a step back from those fiery darts and huge stones that some misinformed people throw at us. Turn to God and ask, "I understand how they see me, but how do You see me?" Because then you will have a totally different view.

Colossians 2:10 tells us we are complete in Christ, that we have everything we need. If you back up a little to verse 6 we are encouraged to walk in Christ, we have received Him into our lives so walk in what we know to be true. We are encouraged to be rooted and built up in Him and to stand strong in our faith. Then we are told to not let ourselves be cheated by man's philosophy and empty deceit based on their traditions. Because in Christ we find the fullness of God and are made complete.

When I think back to how many years of my life I spent following the traditions of a given denomination, I shudder. We must turn to Christ for direction and truth. He is the One who has the answers to all lives troubles. Never take the words of anyone, including myself, without searching the scriptures for yourself.

Second, we see in the scripture that there is no condemnation in Christ. (Romans 8:1) As Christians we are free from God's banishing judgment because we have been saved from such judgment through accepting Jesus

Christ as our Lord and Savior. His blood covers us and cleans us, setting us free. Therefore, any condemnation you have experienced through the institutional church is wrong.

There is a difference between condemnation and chastisement. God's chastisement/correction is good and needed for growth. Condemnation does nothing but make you feel less than everyone else. Totally the opposite of what Christ wants you to feel.

Next, being in Christ makes us a new creation. (2 Corinthians 5:17) When we step out in faith and announce Jesus Christ as our personal Lord and Savior, at that moment we become someone new. It is at this point that we begin a new walk with Jesus. Our new look on life will bring changes, but it doesn't happen over night.

Reading the Bible and hanging out with our Christian brothers and sisters go a long way in helping us to develop into the man or woman God created. The devils intent is to steer us away from Christ and he has so many different ways he can do that. But if we stay focused on the Word and connected to fellow believers we stand a much better chance of defeating any attempts of Satan to rob us of God's perfect plan for our lives.

Finally, as a new creation in Christ, we are to act with tender mercies, kindness, humility, meekness, longsuffering (willingness to hang in there for long periods of time), bearing with one another and forgiving one another. (Colossians 3:12) Jesus told his disciples that this kind of behavior is what will identify you as His children to the world. Granted it is not always easy, but it is what we should strive for each and every day.

Continued on page 18

Who Love's Ya? *continued from pg 17*

I would like to conclude with quoting the following scripture, Colossians 3:14-17, "But above all these things put on love, which is the bond of perfection. Let the peace of God rule in your hearts, to which also you were called in one body, and be thankful. Let the word of Christ dwell in you richly in all wisdom, teaching and admonishing one another in psalms and hymns and spiritual songs, singing with grace in your hearts to the Lord. Whatever you do in word or deed, do all in the name of the Lord Jesus, giving thanks to God the Father through Him."

As always feel free to ask questions or provide comments through email to the pride center. I pray that God's peace and love will rule your heart each and every day.

Come meet like minded Charismatic Gay Christians each Sunday at the Pride Center at 10:30am for Bible Study. Call 859-253-3233 for more information.

Ahava Center for Spiritual Living

A New Thought Community

Ahava is an open and affirming community which accepts all religious paths. We are here to embody and to express the Divine Love of God that is calling us to transform our personal lives through the practice of universal principals.

We are located at 300 Sherman Ave off Richmond Rd near Henry Clay's estate. The building we use is at the corner of Sherman and Menifee. Our services are Sundays at 9:45am. Call 859-797-7794 or www.Ahavacenter.com.

GLSO Garage Sale April 16 & 17 3559 Lansdowne Dr

We need your unwanted items found in your closets or garages. Get a head start on spring cleaning and bring them to the Pride Center. Give us a call if you need pick up 859-253-3233.



The Unitarian Universalist Church

3564 Clays Mill Rd.

Public Support for GLBT Rights

The Unitarian Universalist Church has worship service at 11am each Sunday. We are a welcoming congregation that celebrates our GLBT members. We are located at 3564 Clays Mill Road, just inside Man O' War. Please pay us a visit.

Interweave, the GLBTQS support group, will be meeting on Sunday, April 18. We will have a potluck lunch and a program so bring a dish and join us.

The U.U. Church now has two gender neutral bathrooms, that can be used by everyone. Interweave requested this change in order to create a more welcoming space. This provides an option for people who are transitioning, who's gender is not obvious, and for parents who want to take their child into a bathroom with them.

Unitarian Universalism has a liberal religious tradition with room for many beliefs. Our congregation includes people who identify as Christian, Jewish, Buddhist, Pagan, Muslim, Atheist, Agnostic, and Humanist.

There is a Humanist Group that meets regularly at the Church. Their next meeting is Wednesday, April 14, at 7pm in the Richard Allen House, to the side of the church. There will be a discussion on "The Evolution of Human Spirituality." What do you mean when/if you use the term "spirituality"? For information contact Dick Renfro at frickdan@windstream.net

The GLSO Directory

** Have emails or websites*

GLSO Board:

GLSO Pride Center (Bill)859-253-3233
 GLSO Board President.....Dennis Wheatley
 Contact number.....859-253-3233
 Discussion Group (Bill)859-253-3233
 GLSO News (Mary).....859-266-5904
 Subscriptions.....859-253-3233
 GSA –Teens (Mary).....859-266-5904
 Speakers' Bureau (Mary).....859-266-5904

Student Groups:

Berea College ACE (Ryan).....859-985-3633
 Centre College BGLA (Mykol)
 859-238-5332
 Morehead State Univ. (Ned)606-783-2294
 OUTsource (UK)859-323-3312
 UK Gay Straight Alliance (Matt)
 859-559-7464

Anonymous HIV Testing:

Jessamine County859-885-4149
 Lex. Fayette County859-288-2437
 Woodford County.....859-873-4541
 U.K. Adolescent Medicine.....859-323-5643

HIV/AIDS Info/Services:

AVOL859-225-3000
 Lexington Health Dept.859-288-2437
 HIV/AIDS Legal Project502-584-1254
 Cumberland Region (SEKY-Pat)
 606-864-3776
 888-425-7282
 Lex. S.T.O.P. Program (Jeff)
 859-254-3469 x 230
 Louisville Region502-574-0161
 Northern Kentucky Region859-341-4264
 Moveable Feast Lex., (Terry).....859-252-2867

Community Groups:

A.A. (Ron)859-967-9960
 Al-Anon / Al-Teen (Office)859-277-1877
 Bluegrass C.O.L.T.S. (Morris)
 859-225-9169
 Council for Peace & Justice859-255-6999
 Fairness of Louisville502-893-0788
 Social Services (formerly First Link).....211
 Internat. Gay Bowling (Steve).....
 859-276-3058
 Lexington Fairness859-951-4450
 Lex. Human Rights Comm.859-252-4931
 Lex. Insight Group (Dana)859-230-2428
 Lexington Pride Festival859-253-3233
 Lexington Lyons (Mason).....859-468-6371
 MACT859-358-8335

PFLAG Louisville502-329-0229
 Rainbow League.....859-420-6398
 United Way (Ask Us).....211 or 859 313-5465
 SisterSound (Patti).....859-806-0243
 TransKentucky.....859-963-6606
 24 hr. Crisis Line800-928-8000
 24 hr. Teen Crisis Line800-999-9999

Religious Groups:

Interweave (Unitarian-Mary).....859-266-5904
 Integrity (Episcopal-David).....859-396-9691
 Lexington Friends (Quakers).....859-254-3319
 MCC Paducah (Rev. Lillian).....270-443-3339

Email & Website Addresses:

GLSO President Dennis Wheatley.....
 dennis@glso.org.com
 GLSO/Pride Center Website.....www.glso.org
 Pride Center.....info@glso.org
 AVOL.....www.avolky.org
 Bluegrass Women's Network.....
 thebluegrasswomensnetworkowner
 @yahoogroups.com
 Imperial Court of Kentucky.....
 www.ImperialCourtKentucky.org
 KY Pagan Forumhttp://go.to/kypaganforum/
 Lexington Fairness.....www.lexfair.org
 Lexington Pride Festival.....www.lexpride.com
 Email.....lexpride@gmail.com
 Lyons Leather/Levi Clubwww.lexlyons.org
 Moonshine Bears of KY (Jim).....
 www.moonshinebears.com
 OUTsourcesusanmatsubara@yahoo.com
 PFLAG Lou.....pflaglouisville@yahoo.com
 Rainbow League.....morgan@morganfry.com
 TransKentuckyTransKentucky@gmail.com
 UK Gay Straight Alliance.....
 matthew.hufford@uky.edu
 United Sister Circle Alliance.....
 www.unitedsisters.org

GLSO News Deadline

April 15

Send articles, ads, and pictures to

articles@glso.org

advertising@glso.org

The **GLSO RAINBOW SPONSOR**

The Imperial Court of KentuckyImpCtKY@aol.com

www.ImperialCourtKentucky.org

GLSO NEWS MONTHLY SPONSORS

SisterSound.....859-806-0243

Diverse Music for All Women

Richardson Vision Center859-278-4201

1757 Alexandria Drive, Gardenside Shopping Ctr.

KCHIP877-524-4718

kidshealth.ky.gov

Debra Hensley Insurance.....859-276-3244

1513 Nicholasville Rd.

Mohua "Mou" Das.....859-554-5090

Financial Advisor

Lexington Lyons859-468-6371

Levi and Leather Club

Lexington Fairness.....859-951-4450

www.lexfair.org

Saint Mychal the Martyr Parish.....859-338-1195

www.stmychalthemartyr.org

Moveable Feast.....859-252-2867

474 Silver Maple Way

Unitarian Universalist Church.....859-223-1448

3564 Clays Mill Rd.