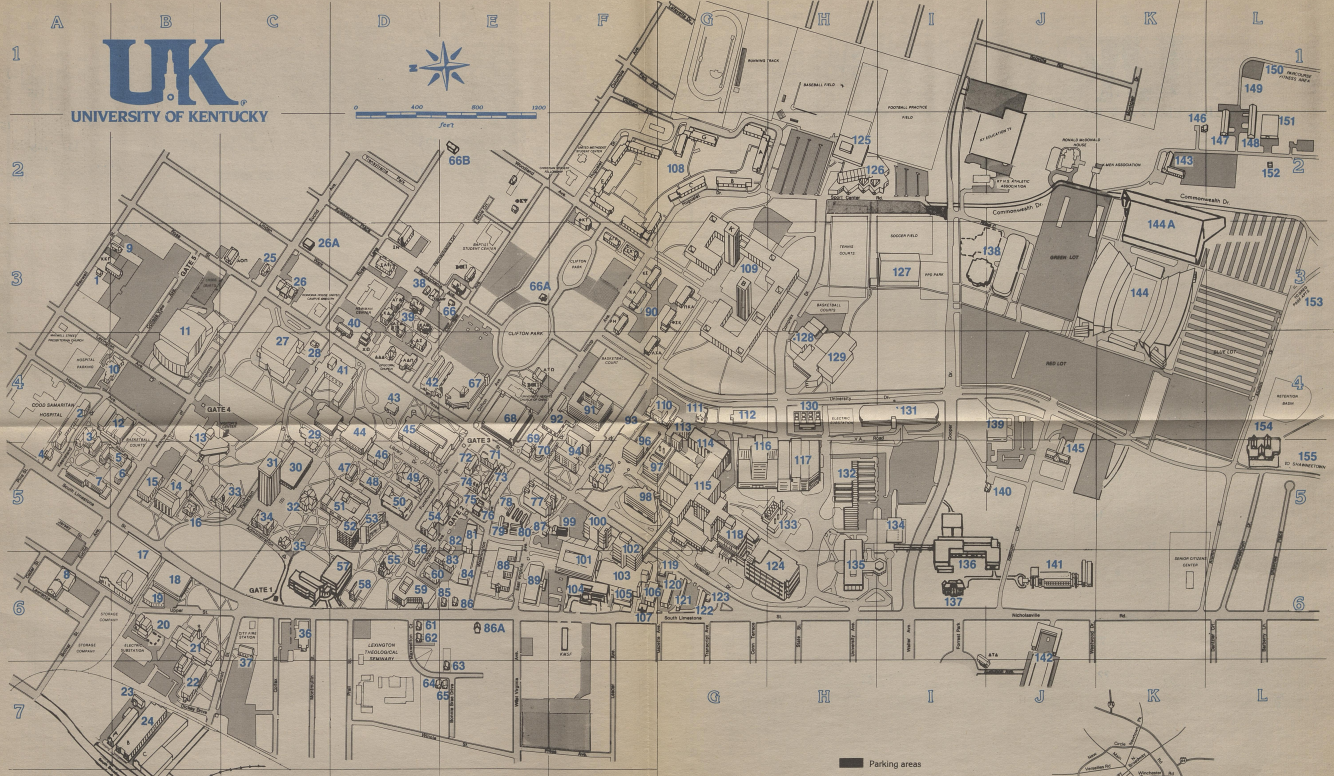
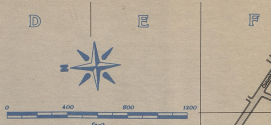




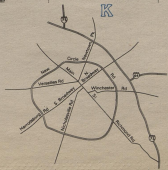
UNIVERSITY OF KENTUCKY



Map prepared by Cartographic Lab, University of Kentucky, Lexington, Kentucky. Revision by UK Public Relations.

Visitors should check with guards at entrances to the University about visitor parking areas, or at the Public Safety Department, corner Rose and Euclid streets.

Parking areas



22. 3/10

ABOUT THE UNIVERSITY ...

HISTORY AND GOVERNANCE

The University of Kentucky was founded in 1865 under the provisions of the Morrill Land-Grant Act.

For the first 40 years, enrollment remained small, but by the turn of the century the University was becoming one of the most important institutions in the state.

UK took its present name in 1916 and at the same time assumed the responsibility of being the state's principal institution for teaching, research and service. The University of Kentucky is governed by a 20-member Board of Trustees. Dr. Charles T. Wethington Jr. is the 10th President of the University.

THE CAMPUS

The University of Kentucky's 672-acre campus is located just south of downtown Lexington, Ky., which has a population of more than 230,000.

ACADEMIC PROGRAMS

The University of Kentucky has 17 academic colleges. They are: Arts and Sciences, Agriculture, Engineering, Business and Economics, Education, Human Environmental Sciences, Library and Information Sciences, Social Work, Architecture, Communications, Fine Arts, Law, Medicine, Dentistry, Nursing, Allied Health Professions, Pharmacy.

On the graduate level, 95 programs lead to the master's degree and 59 to the doctorate in The Graduate School.

RESEARCH

The University of Kentucky library system contains more than two million volumes and is the state's only complete depository for United States, United Nations, European Communities and Canadian government publications.

The University receives about \$92 million in external support for research and other projects each year. Major areas of externally funded research are in the medical sciences (including cancer and aging), biotechnology, biomedical engineering, engineering sciences, mathematical and computational sciences, agricultural sciences and various social sciences. Both basic and applied research in these areas receive substantial external support.

An IBM 3090-60J supercomputer is among the resources of the UK Computing Center.

FACULTY

UK's full-time faculty numbers 1,643 on the Lexington campus and the Medical Center.

ADMISSIONS AND ENROLLMENT

Admission to the University of Kentucky is offered to students who demonstrate the ability to compete in an academically demanding environment. Students will be automatically admitted if they have no previous college work and their standardized test scores (ACT or SAT), high school grades and curriculum predict successful academic performance as UK freshmen. Notices of admission to UK are sent to students on a continuous basis throughout the school year.

Approximately 20 percent of the UK freshman class may be selected from applicants who do not meet the requirements for automatic acceptance. In addition to standardized test scores, grades, and high school curriculum, the Admissions Office will consider such factors as extracurricular activities, out-of-class accomplishments, personal achievement, and the geographic region in which the student lives. Admissions decisions for delayed applicants are usually made after February 15.

Information on admission requirements, deadlines, and/or campus visits may be obtained from the Office of Admissions, 100 Funkhouser Building, UK Lexington, KY 40506-0054 or by calling 606-257-2000.

TUITION AND FINANCIAL AID

The 1993-94 undergraduate tuition is \$1,139 per semester for residents of Kentucky and \$3099 for non-residents. Room

and board for the school year is \$2,940 or higher, depending on the meal plan selected. More than 55 percent of UK's students receive financial aid which amounts to some \$42 million annually.

STUDENT BODY

Enrollment on UK's Lexington campus totals about 24,000. Students are from every Kentucky county, from 49 other states and the District of Columbia and from 84 foreign countries. About 5,300 students live in UK's residence halls. About 2,700 UK students belong to fraternities and sororities and a large number of them live in the residences of these groups.

ALUMNI

The University has about 115,000 alumni around the world with about 25,000 paid members in UK's National Alumni Association, including 8,883 life members. There are 61 active alumni clubs across the nation, with 32 of them in Kentucky and 28 outside the state from California to New York. There are four "young alumni" groups in Kentucky.

ATHLETICS

In athletics, UK has a total of 19 sports — 10 men's and 9 women's sports — competing on the highest level of national collegiate competition.

The Wildcat basketball team plays in the downtown Lexington Civic Center's Rupp Arena under the direction of Coach Rick Pitino. UK has won five NCAA championships, two NCAA runner-up trophies, two NIT winning trophies, and 39 Southeastern Conference championships.

Wildcat football teams play in the 50,000-seat Commonwealth Stadium on campus and in recent years have won two bowl games and shared in an SEC championship. The team is coached by Bill Curry.

COMMUNITY COLLEGES

The 14 community colleges in Kentucky are an important part of the University of Kentucky. These two-year colleges, located throughout the state, offer the first two years of the baccalaureate program, associate technical degrees, and a wide variety of continuing education and community service programs. Enrollment at the community colleges statewide is more than 48,000 students.

MEDICAL CENTER

UK's Chandler Medical Center has a wide range of programs in education and research. The five colleges — Medicine, Dentistry, Nursing, Pharmacy and Allied Health Professions — have more than 3,592 students pursuing bachelor's, master's and doctoral degrees in health-related fields.

The Medical Center also has the 461-bed University of Kentucky Hospital as part of its teaching and service programs.

WHAT TO SEE

Free guided bus tours are conducted at 10 a.m. and 2 p.m. weekdays from the Visitor Center located in the UK Student Center. Saturday tours are at 11 a.m. September through April only. Walking Tours begin at 12:15 p.m. daily. Special group tours may be arranged by calling 606-257-3555.

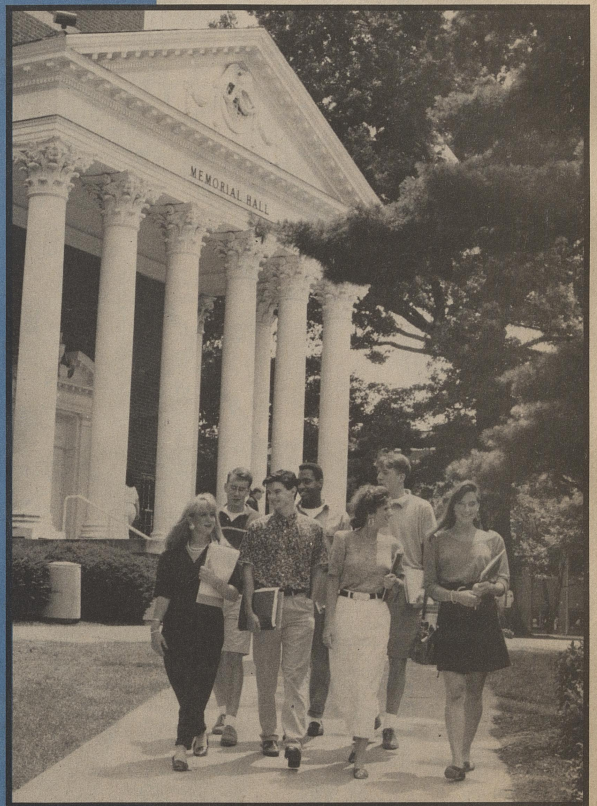
The UK Art Museum, located in the West Wing of the Singletary Center for the Arts at the corner of Rose Street and Euclid Avenue, is open daily except Mondays and University holidays, from noon to 5 p.m. (4:30 p.m. in summer).

The UK Museum of Anthropology is open Monday through Friday from 8 a.m. to 4:30 p.m. It is located in Lafferty Hall on the campus. A cultural history of Kentucky is one of the featured exhibits.

Visitors to the UK campus may also want to take advantage of the breathtaking view of Lexington and the University campus from the 18th floor of the Patterson Office Tower on campus. It is open from 8 a.m. to 4:30 p.m., Monday through Friday.

U.K.

UNIVERSITY OF KENTUCKY



CAMPUS MAP '93-'94

Alphabetical Listing

34 Administration Bldg	C5
148 Agricultural Distribution Center	L2
110 Agricultural Engineering Bldg.	G2
136 Agricultural Engineering Bldg. (new)	L6
147 Agricultural Machine Research Bldg.	L4
154 Agricultural Regulatory Service Bldg.	L5
135 Agricultural Science Center North	H6
134 Agricultural Science Center South	E5
80 Agronomy Greenhouse	E5
99 Agronomy Headhouse—Greenhouses	F5
120 Allied Health, College of	C6
15 Alumni Gym	B5
26 Alumni House	C3
17 American Bldg.	B6
52 Anderson Hall	D5
113 Animal Pathology Bldg.	D4
61 Appalachian Center	D6
62 Appalachian College Program	D6
33 Barker Hall	C5
77 Biological Sciences Bldg.	E5
109 Blanding-Kirwan Dorm Complex	G3
12 Blazer Hall	B4
42 Boone Faculty Center	D3
127 Boone Tennis Center	L4
3 Bowman Hall	E5
5 Boyd Hall	B5
71 Bradley Hall	B5
74 Breckinridge Hall	E5
57 Business & Economics Bldg.	D6
25 Campus Police	C3
65 Center for Labor Education & Research	E7
19 Central Heating Plant	B6
69 Centrifuge Bldg.	E3
115 Chandler Medical Center	D5
45 Chemistry-Physics Bldg.	C4
97 Comb Cancer Research Bldg. (Markey Cancer Ctr)	F5
144 Commonwealth Stadium	K3
142 Commonwealth Village	J6
151 Communications Building	L1
130 Cooling Plant #1	H5
20 Cooling Plant #2	B6
95 Cooper Bldg.	F5
137 Cooper House	B6
108 Cooperstown	C5
95 Davis-Mills MRI Bldg. (Markey Cancer Ctr)	F5
115 Dentistry, College of	C5
75 Dept. of Geological Sciences Annex	E5
22 Dickey Hall	B7
28 Directors Residence (PPD)	C4
94 Donovan Hall	F5
54 Early Childhood Lab	E5
9 Employment Office	B3
51 Engineering Complex (under const.)	D5
140 Entomology Research Bldg.	F5
56 Erikson Hall	D6
144A Field House	K3
41 Fine Arts Bldg.	D4
82 Flammable Storage Bldg.	B5
92 Food Storage Bldg.	F4
90 Fraternity Row	F3
16 Frazee Hall	B5
54 Funkhouser Bldg.	D6
1 Gaines Humanities Center	A3
35 Gillis Bldg. (Administration Annex)	C5
141 Gluck Equine Research Center	E5
145 Good Barn	J6
132 Greenhouses	H5
153 Greg Page Apts.	L3
91 Haggin Hall	F4
4 Hamilton House	A5
146 Head Mechanics Residence	K2
123 Health Careers Programs Office	C6
7 Holmes Hall	A5
79 Insectary—Greenhouse	E5
152 Isolation Barn	L2
6 Jewell Hall	B5
48 Journalism Bldg.	F4
92 K-Lair Grille	F4
49 Kastle Hall	D5
2 Keeneland Hall	A4
103 Kentucky Clinic (Wright Med. Plaza)	F5
104 Kentucky Clinic	F6
106 Kentucky Clinic Annex	F6

66A Kentucky Humanities Council	E3
64 Kentucky Municipal League	E7
72 Kinkead Hall	E5
67 Ky. Geological Survey	E4
29 Lafferty Hall	C4
128 Lancaster Aquatic Center	H4
59 Law Bldg.	D6
44 Library	D4
138 Lexington Community College	J5
85 Ligon House	E6
26A Linden Walk Apts.	C3
58 Mathews Bldg.	D6
86 Mathews House	E6
43 Maxwell Place	D4
50 McVey Hall	D5
121 Medical Center Annex #1	G6
120 Medical Center Annex #2	G6
119 Medical Center Annex #3	G6
105 Medical Center Annex #4	F6
122 Medical Center Bookstore	G6
114 Medical Science Research Bldg.	G5
151 Medical Storage Facility	L2
112 Medicine, College of	G4
118 Critical Care Center	G5
11 Memorial Coliseum	B4
55 Memorial Hall	D6
23 Metal Arts Bldg.	B7
32 Miller Hall	C5
60 Mineral Industries Bldg.	D6
67 Mining and Mineral Resources Bldg.	D4
47 Mining Engineering Lab	D5
143 Motor Pool	K2
66 Music Dept.	E3
76 National Cartographic Info. Center	E5
102 Nursing/Health Sciences Bldg.	F5
126 Nutter Football Training Facility	H2
64 Outdoor Education for Handicapped	D7
150 Parcours Physical Fitness Area	L1
131 Parking Structure #1	H4
168 Parking Structure #2	E4
101 Parking Structure #3 (Medical Plaza)	G6
124 Parking Structure #4	G6
3 Patterson Hall	A4
21 Patterson Office Tower	C5
46 Pence Hall	D5
18 Peterson Service Bldg.	B6
100 Pharmacy Bldg.	F5
8 Printing Services	A6
38 Psychological Service Center	D3
84 Research Lab #1	E6
89 Research Lab #2	E6
24 Reynolds Bldg.	B7
98 Roach Patient Care Bldg. (Markey Cancer Ctr)	F5
53 Robotics Bldg.	D5
66B Rose Lane Apts.	E2
25 Safety and Security	C3
105 Sanders-Brown Research Center	F6
27 Scott Street Bldg.	C6
88 Scovell Hall	B6
129 Seaton Center	H4
155 Shawneetown Apts.	L5
125 Shively Sports Center	H2
27 Singletary Center for the Arts	C4
81 Stone Research Bldg.	E5
87 Small Animal Lab	E5
39 Sorority Row	B3
14 Student Center	B5
40 Sturgill Development Bldg.	D3
15 Taylor Education Bldg.	B6
83 Terrill Civil Engineering Lab	D6
139 Tobacco & Health Research Bldg.	H4
78 Tobacco Research Lab	E5
36 Transportation Research Bldg.	C6
13 UK Bookstore, The	B5
115 University Hospital	G5
86A University Press of Kentucky	E6
116 Veterans Hospital	G5
117 Veterans Hospital Addition	H5
13 Visitor Center	B4
70 Wanner-Gren Research Lab	E5
30 White Hall Classroom Bldg.	C5
10 Wildcat Lodge	B4
111 Willford Bldg.	G4

Numerical Listing

1 Gaines Humanities Center	A3
2 Keeneland Hall	A4
3 Patterson Hall	A4
4 Hamilton House	A5
5 Boyd Hall	B5
7 Jewell Hall	B5
7 Holmes Hall	B4
8 Printing Services	A6
9 Employment Office	B3
10 Wildcat Lodge	B4
11 Memorial Coliseum	B4
12 Blazer Hall	B4
13 Visitor Center	B4
14 Student Center	B5
15 Alumni Gym	B5
16 Frazee Hall	B5
17 American Bldg.	B6
18 Peterson Service Bldg.	B6
19 Central Heating Plant	B6
20 Cooling Plant #2	B6
21 Taylor Education Bldg.	B6
22 Dickey Hall	B7
23 Metal Arts Bldg.	B7
24 Reynolds Bldg.	B7
25 Safety and Security	C3
25 Campus Police	C3
26 Alumni House	C3
26A Linden Walk Apts.	C3
27 Singletary Center for the Arts	C4
28 Directors Residence (PPD)	C4
29 Lafferty Hall	C4
30 White Hall Classroom Bldg.	C5
31 Patterson Office Tower	C5
32 Miller Hall	C5
33 Barker Hall	C5
34 Administration Bldg.	C5
35 Gillis Bldg. (Administration Annex)	C5
36 Transportation Research Bldg.	C6
37 Scott Street Bldg.	C6
38 Psychological Service Center	D3
39 Sorority Row	D3
40 Sturgill Development Bldg.	D3
41 Fine Arts Bldg.	D4
42 Boone Faculty Center	D4
43 Maxwell Place	D4
45 Chemistry-Physics Bldg.	D4
46 Pence Hall	D4
47 Mining Engineering Lab	D5
48 Journalism Bldg.	D5
49 Kastle Hall	D5
50 McVey Hall	D5
51 Engineering Complex (under const.)	D5
52 Anderson Hall	D5
53 Robotics Building	D5
54 Funkhouser Bldg.	D5
55 Memorial Hall	D6
56 Erikson Hall	D6
57 Business & Economics Bldg.	D6
58 Mathews Bldg.	D6
59 Law Bldg.	D6
60 Mineral Industries Bldg.	D6
61 Appalachian Center	D6
62 Appalachian College Program	D6
63 Kentucky Municipal League	D6
64 Outdoor Education for Handicapped	D7
65 Center for Labor Education & Research	E7
66 Music Dept.	E3
66A Kentucky Humanities Council	E3
66B Rose Lane Apts.	E2
67 Mining & Mineral Resources Bldg.	E4
67 Ky. Geological Survey	E4
68 Parking Structure #2	E4
69 Centrifuge Bldg.	E5
70 Wanner-Gren Research Lab	E5
71 Beasley Hall	E5
72 Kinkead Hall	E5
73 Bowman Hall	E5
74 Breckinridge Hall	E5
75 Dept. of Geological Sciences Annex	E5
76 National Cartographic Info. Center	E5
77 Biological Sciences Bldg.	E5
78 Tobacco Research Lab	E5

79 Insectary—Greenhouse	E5
80 Agronomy Greenhouse	E5
81 Stone Research Bldg.	E5
82 Flammable Storage Bldg.	E6
83 Terrill Civil Engineering Lab	E6
84 Research Lab #1	E6
85 Ligon House	E6
86 Mathews House	E6
86A University Press of Kentucky	E6
87 Small Animal Lab	E6
88 Scovell Hall	E6
89 Research Lab #2	F3
90 Fraternity Row	F3
91 Haggin Hall	F4
92 K-Lair Grille	F4
92 Food Storage Bldg.	F4
94 Donovan Hall	F4
95 Cooper Bldg.	F5
96 Davis-Mills MRI Bldg. (Markey Cancer Ctr)	F5
97 Comb Cancer Research Bldg.	F5
98 Roach Patient Care Bldg. (Markey Cancer Ctr)	F5
99 Agronomy Headhouse—Greenhouses	F5
100 Pharmacy Bldg.	F5
101 Parking Structure #3 (Medical Plaza)	F6
102 Nursing/Health Sciences Bldg.	F6
103 Kentucky Clinic (Wright Med. Plaza)	F6
104 Kentucky Clinic	F6
105 Sanders-Brown Research Center	F6
106 Kentucky Clinic Annex	F6
107 Medical Center Annex #4	F6
108 Cooperstown	G2
109 Blanding-Kirwan Dorm Complex	G3
110 Agricultural Engineering Bldg.	G4
111 Willford Bldg.	G4
112 Medicine, College of, Office Bldg.	G4
113 Animal Pathology Bldg.	G4
114 Medical Science Research Bldg.	G5
115 Chandler Medical Center	G5
115 Dentistry, College of	G5
115 University Hospital	G5
116 Veterans Hospital	G5
117 Veterans Hospital Addition	H2
118 Critical Care Center	G6
119 Medical Center Annex #3	G6
120 Allied Health, College of	G6
120 Medical Center Annex #2	G6
121 Medical Center Annex #1	G6
122 Medical Center Bookstore	G6
123 Health Careers Programs Office	G6
124 Parking Structure #4	G6
125 Shively Sports Center	H2
126 Nutter Football Training Facility	H2
127 Boone Tennis Center	I3
128 Lancaster Aquatic Center	H4
129 Seaton Center	H4
130 Cooling Plant #1	H4
131 Parking Structure #1	H4
132 Greenhouses	H5
133 Medical Center Heating—Cooling Plant	H5
134 Agricultural Science Center South	H5
135 Agricultural Science Center North	H6
136 Agricultural Engineering Bldg. (new)	I6
137 Cooper House	I6
138 Lexington Community College	J6
139 T. Obacco & Health Research Bldg.	J4
140 Entomology Research Bldg.	J5
141 Gluck Equine Research Center	K6
142 Commonwealth Village	I6
143 Motor Pool	K3
144 Commonwealth Stadium	K2
144A Field House	K3
145 Good Barn	J6
146 Head Mechanics Residence	K2
147 Agricultural Machine Research Bldg.	L2
148 Agricultural Distribution Center	L2
149 Communications Building	L1
150 Parcours Physical Fitness Area	L1
151 Medical Storage Facility	L2
152 Isolation Barn	L3
153 Greg Page Apts.	L3
154 Agricultural Regulatory Services Bldg.	L3
155 Shawneetown Apts.	L5