

Sanborn Map Company  
POPULATION 100  
PREVIOUS EDITIONS:  
MAY 1908  
NO SYSTEM & NO HAND ENGINE  
NO ROSE CORN  
NO RAIL & LASSER TRUCK

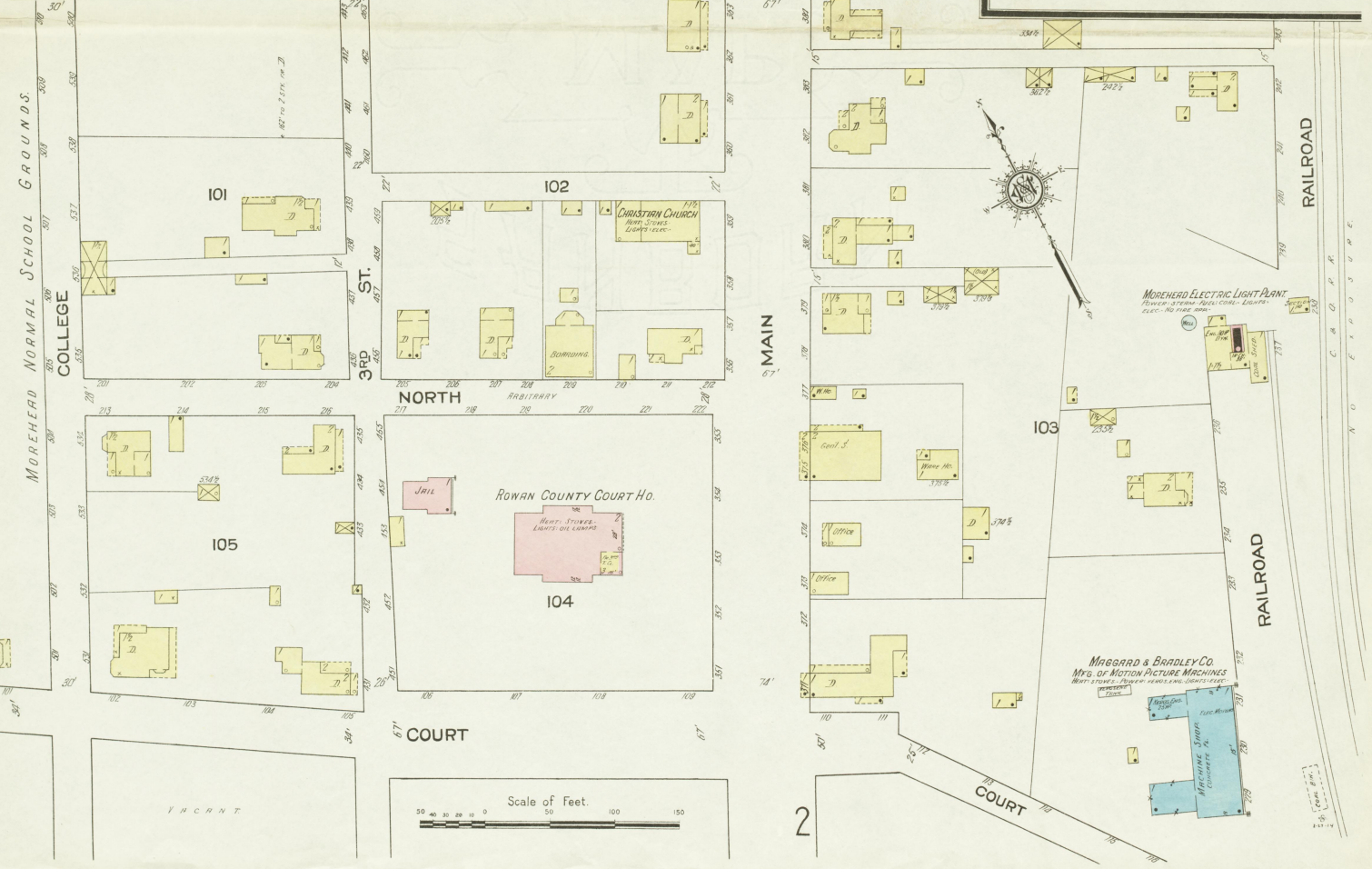
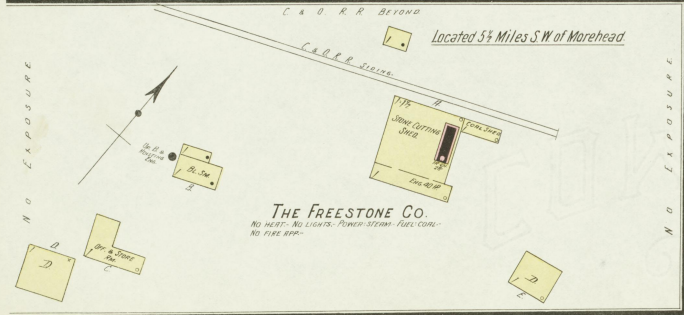
**MOREHEAD**  
KENTUCKY  
FEBRUARY 1914  
11 BROADWAY, NEW YORK

MAR 23 1914  
2 P. 26293

Streets not improved & practically level.  
Public lights electric.

**INDEX**

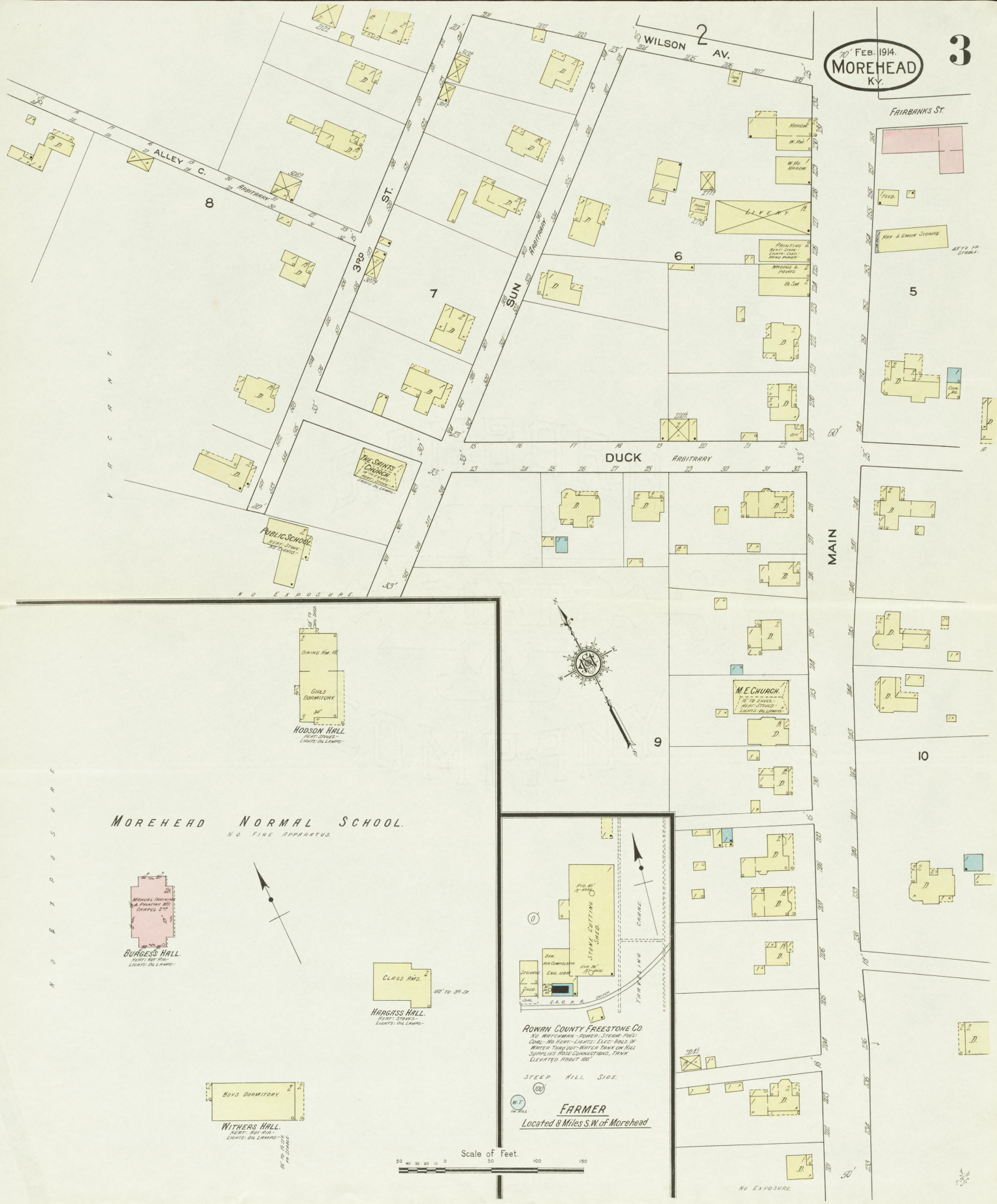
SPECIALS	SHEET	SPECIALS	SHEET
Baptist Church	B	Maggard & Bradley Co., Motion Picture Machine W.P.	1
C & O. R. R. Depot, at Farmer	4	Morehead Electric Light Plant	1
Christian Church, at Farmer	4	Normal School	1
Clearfield Lumber Co.	4	Spoke Co.	1
County Court House and Jail	3	People's Hotel	2
Eastern Kentucky Bluestone Co.	1	Police Court	2
Freestone Co.	1	Post Office	2
Leon Stavo Co.	1	Public School	2
Methodist Episcopal Church	3	Rowan County Bluestone Co.	3
		Saints' Church	3
		Whisler & Seary Co., Saw Mill and Lumber Yard	4



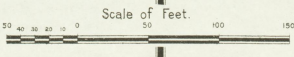
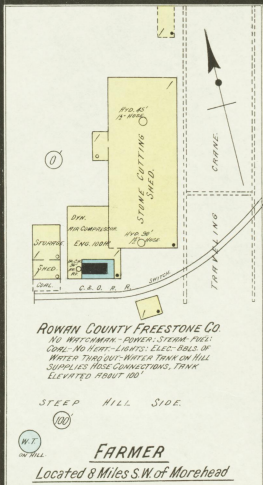




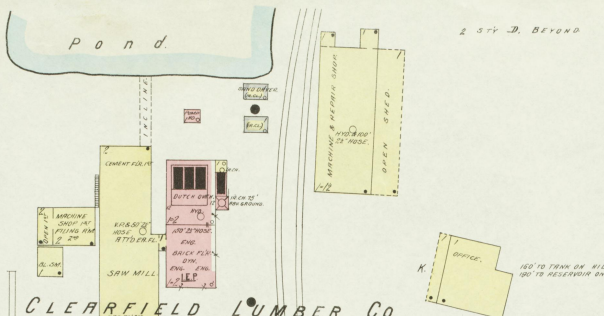




**MOREHEAD NORMAL SCHOOL.**  
 NO FIRE APPARATUS.



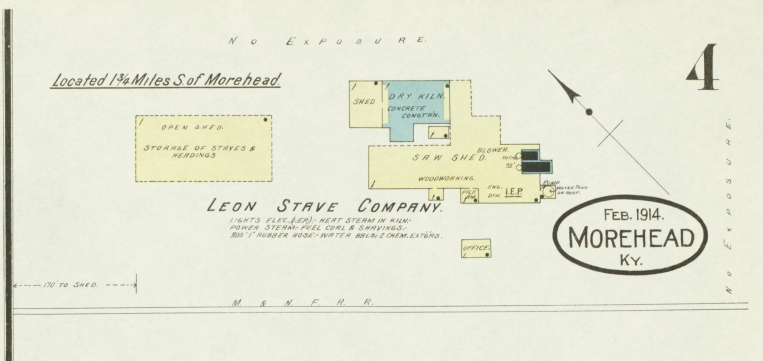




**CLEARFIELD LUMBER CO.**

WIGHT WATERWAY: NEWMAN PORTABLE CLOCK, HOURLY ROUNDS; 80' STATIONS; WEST & POWER STEAM-1125; HOIST-LIGHTS (ELEC.); BELLS OF WATER IN MILL & YARD; WATER PUMPED FROM RIVER TO TRUNK & RECEIVED BY MILL - COOKS, 25000 GALS. & 2000 GALS. - PUMPS: COMBINED CAPY. 30000 GALS. PER HOUR. 875' TO WATER LINE IN CASE OF FIRE - PRESSURE MAIN TRUNK 25 LBS. W.P.S. & HYD. HO. SHOWN - HOSE CHIT WITH 500' 2" HOSE - 500' 1 1/2" HOSE. SAW WET LOGS.

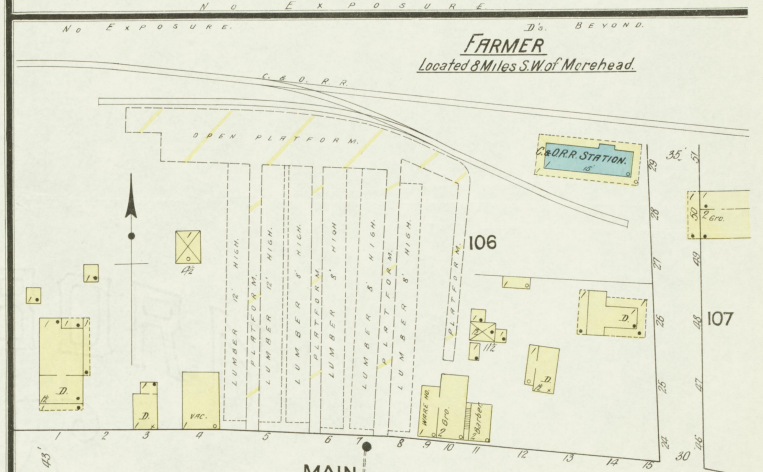
Located 1 1/2 Miles S of Morehead



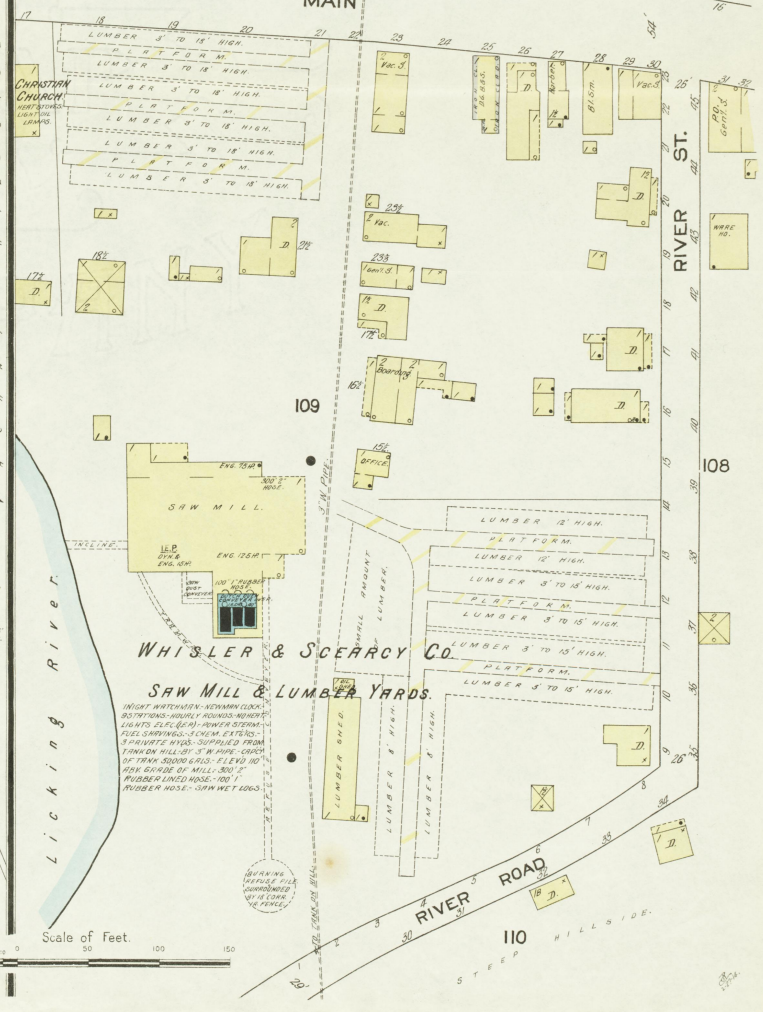
**LEON STAVE COMPANY.**

FEB. 1914.  
**MOREHEAD**  
Ky.

Located 1 1/2 Miles S of Morehead



**FARMER**  
Located 3 Miles SW of Morehead



**WHISLER & SCEARCY CO.**  
SAW MILL & LUMBER YARDS.

WIGHT WATERWAY: NEWMAN PORTABLE CLOCK, HOURLY ROUNDS; 80' STATIONS; HOIST-LIGHTS (ELEC.); POWER STEAM-1125; HOIST-LIGHTS (ELEC.); BELLS OF WATER IN MILL & YARD; WATER PUMPED FROM RIVER TO TRUNK & RECEIVED BY MILL - COOKS, 25000 GALS. & 2000 GALS. - PUMPS: COMBINED CAPY. 30000 GALS. PER HOUR. 875' TO WATER LINE IN CASE OF FIRE - PRESSURE MAIN TRUNK 25 LBS. W.P.S. & HYD. HO. SHOWN - HOSE CHIT WITH 500' 2" HOSE - 500' 1 1/2" HOSE. SAW WET LOGS.

Scale of Feet.

N O E X P O S U R E

N O E X P O S U R E

N O E X P O S U R E

N O E X P O S U R E

N O E X P O S U R E

N O E X P O S U R E

N O E X P O S U R E