

WATER FACILITIES.
Direct pressure system of Water-Works. Source of supply, Artificial Lake Capacity 2750,000 Gals. kept filled by surplus drainage lake located 1/2 mile West of Post Office One-Way Main & Railroad Duplex pump, Capacity 800 Gals. per minute One Pulling pump, Capacity 200 Gals. per minute, best in Earle. Water is pumped from lake direct into mains, the capacity being to 1000 ft. per minute. Located on a hill at an elevation of 400 above Main & Railroad is 45' high pressure tank, pump pressure up to 100 lbs. about 2 miles of 5" lead pipes 20 Double hydrants, 4 single hydrants. System installed 1882. In 1893 replaced by Water Supply. The L. & N. R. has 50,000 gal. tank, that is available in case of fire.

Fire Dept., Not organized. 2 hand hose reels, 1000 ft. hose, 1 1/2" size of fire one hundred & 8000' hose can be called into service from the St. Bernard Mines, 400 feet with 200' 2 1/2" hose mounted by power fire company from L. & N. R. Alarm by Whistle.

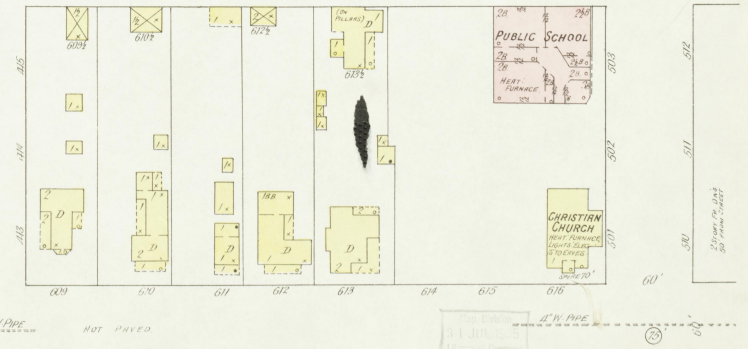
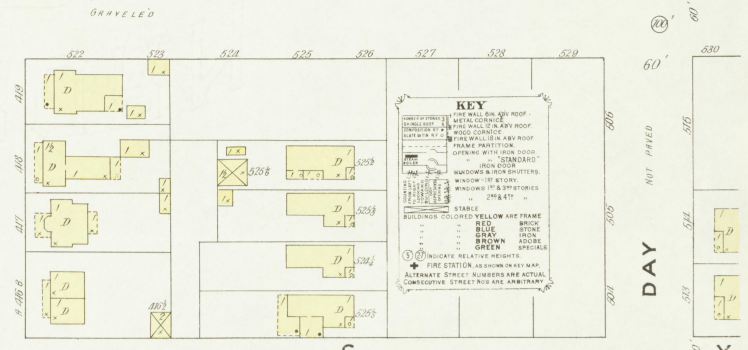
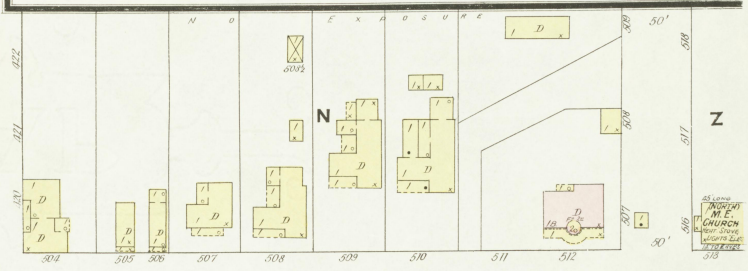
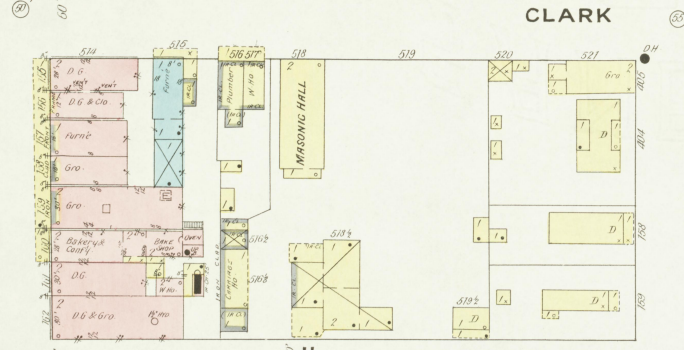
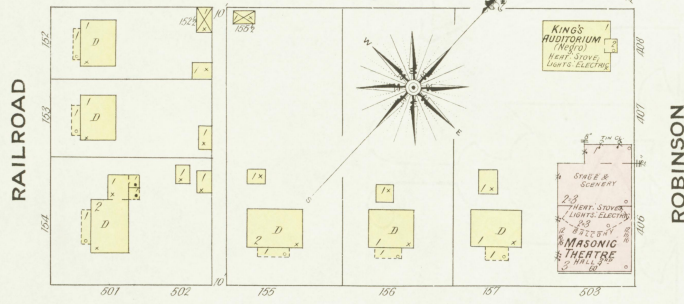
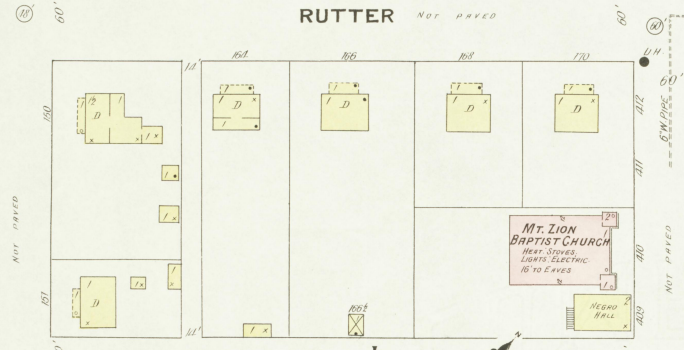
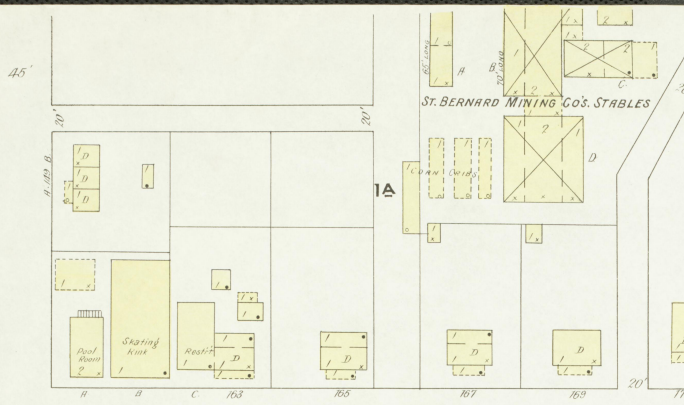
Escarpment between streets partly gravelled. Public Lighting Electric.

INDEX.

STREETS.	NUMBER	STREET	NUMBER	STREET	NUMBER
Clark	155-157	Rutter	161-163	Public Schools	1 & 5
Day	501-518	Seabee Ave.	201-243	R. C. Church	2
Farren Ave.	501-518	Arnold Mine	4	St. Bernard Mining Co.	5
Main	501-518	Baptist Church	2	King's Auditorium	1
McEwen Ave.	501-518	Christian Church	2	Bornaley Mine	4
Moss Ave.	501-518	C. M. E. Church	2	Commissary	1
Railroad	149-165	Denton Hotel	3	Hotel Annex	4
		Earlington Iron Works	4	L. & N. R. Freight Depot	1
				Passenger Station	2
				Round House	4
				Masonic Hall	1
				Theatre	1
				Methodist Episcopal Church	1
				Mt. Zion Baptist Church	2
				Oldham, J. M. Carriage Repair Shop	3
				Victoria Hotel	2
				Water Works Pumping Station	4

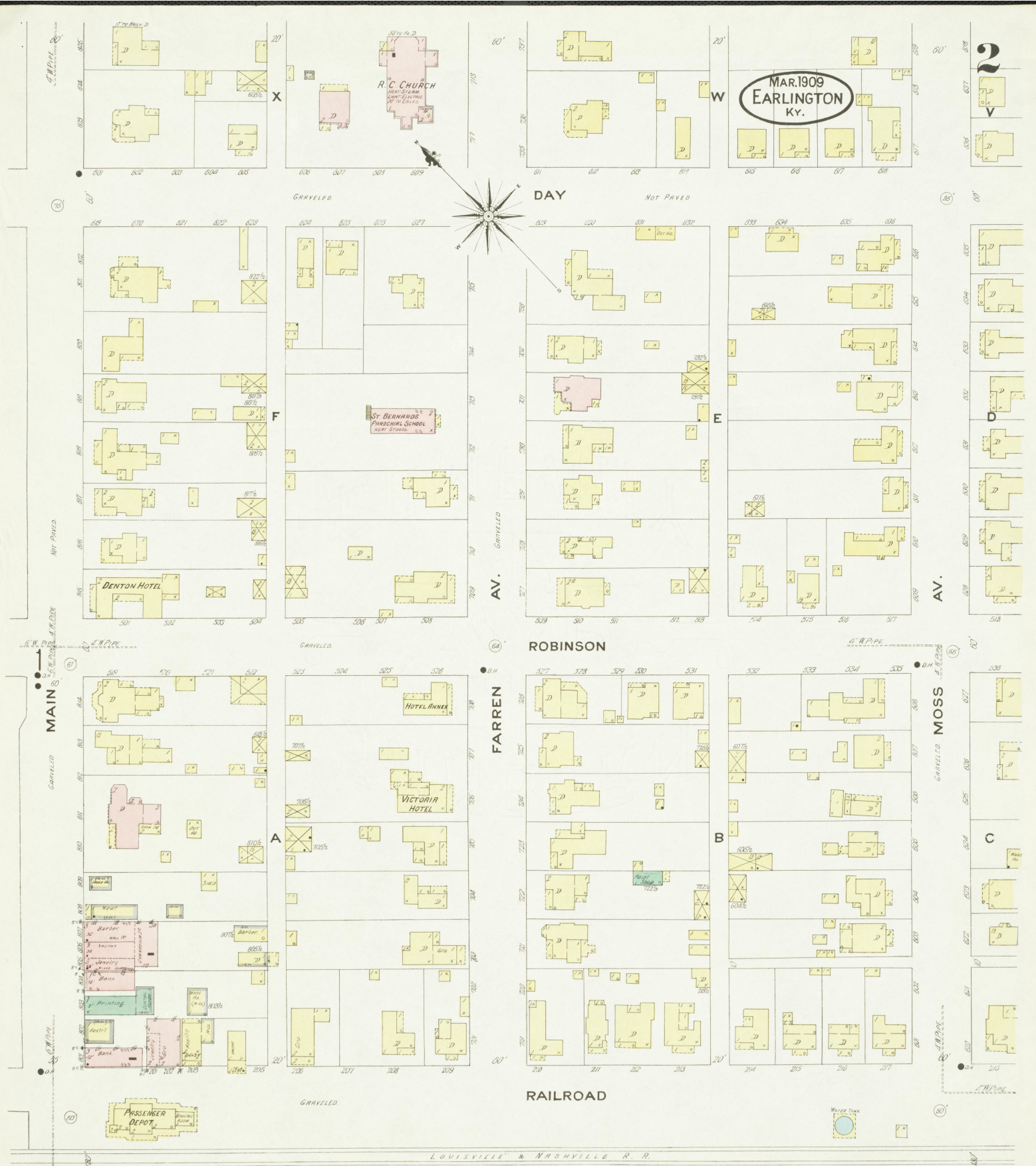
NOTE.—House Numbers given are arbitrary.

Map Division, JUN 21 1909 Library of Congress



Scale of Feet. 0 50 100 150 GRAVELLED

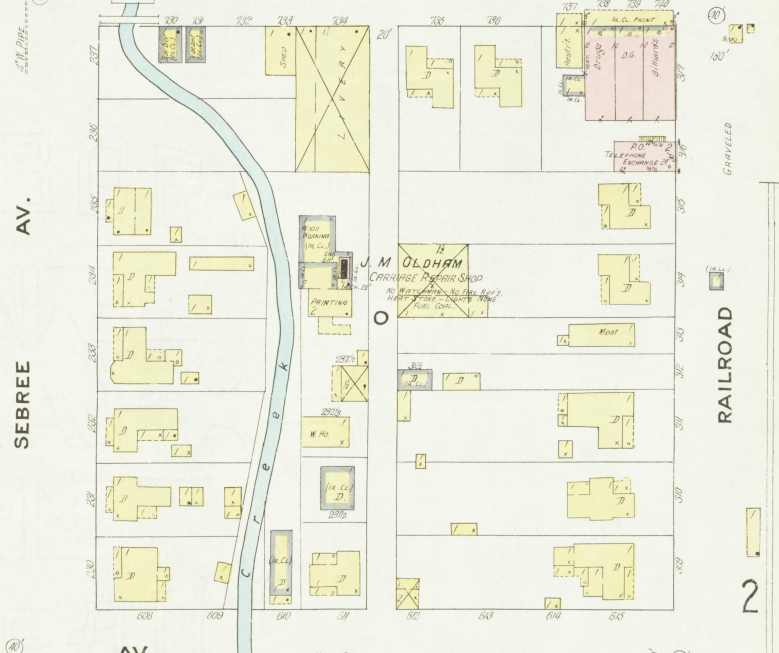
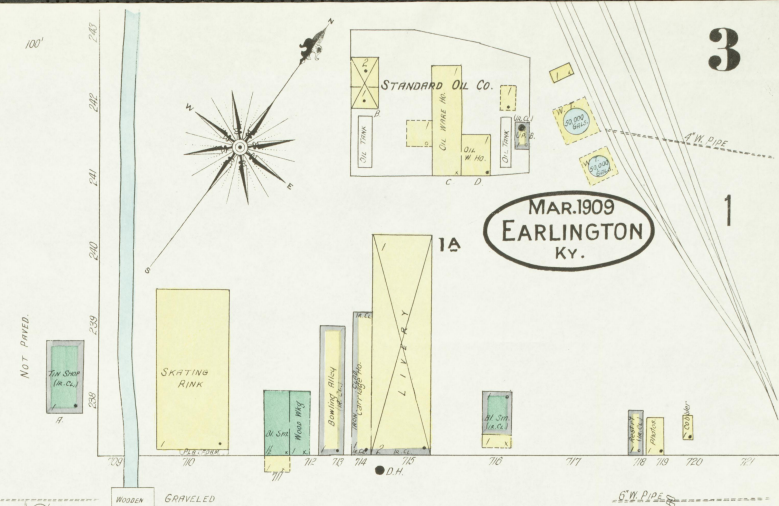
MAIN



2
V

3

MAR. 1909
EARLINGTON
KY.



MAIN

SEBREE AV.

FARREN

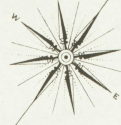
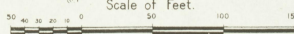
AV.

MOSS

AV.

RAILROAD

Scale of Feet.



NOT PAVED

NOT PAVED

NOT PAVED

NOT PAVED

NOT PAVED

NOT PAVED

MC EWEN AV.

NOT PAVED

NOT PAVED

NOT PAVED

NOT PAVED

NOT PAVED

NOT PAVED

NOT PAVED

NOT PAVED

NOT PAVED

NOT PAVED

NOT PAVED

NOT PAVED

NOT PAVED

NOT PAVED

NOT PAVED

NOT PAVED

NOT PAVED

NOT PAVED

NOT PAVED

NOT PAVED

NOT PAVED

NOT PAVED

NOT PAVED

NOT PAVED

NOT PAVED

NOT PAVED

NOT PAVED

NOT PAVED

NOT PAVED

NOT PAVED

NOT PAVED

NOT PAVED

NOT PAVED

NOT PAVED

NOT PAVED

NOT PAVED

NOT PAVED

NOT PAVED

NOT PAVED

NOT PAVED

NOT PAVED

NOT PAVED

NOT PAVED

NOT PAVED

NOT PAVED

NOT PAVED

NOT PAVED

NOT PAVED

NOT PAVED

NOT PAVED

NOT PAVED

NOT PAVED

NOT PAVED

NOT PAVED

NOT PAVED

NOT PAVED

NOT PAVED

NOT PAVED

NOT PAVED

NOT PAVED

NOT PAVED

NOT PAVED

NOT PAVED

NOT PAVED

NOT PAVED

NOT PAVED

NOT PAVED

NOT PAVED

NOT PAVED

NOT PAVED

NOT PAVED

NOT PAVED

NOT PAVED

NOT PAVED

NOT PAVED

NOT PAVED

NOT PAVED

NOT PAVED

NOT PAVED

NOT PAVED

NOT PAVED

NOT PAVED

NOT PAVED

NOT PAVED

NOT PAVED

NOT PAVED

NOT PAVED

NOT PAVED

NOT PAVED

NOT PAVED

NOT PAVED

NOT PAVED

NOT PAVED

NOT PAVED

NOT PAVED

NOT PAVED

NOT PAVED

NOT PAVED

NOT PAVED

NOT PAVED

NOT PAVED

NOT PAVED

NOT PAVED

NOT PAVED

NOT PAVED

NOT PAVED

NOT PAVED

NOT PAVED

NOT PAVED

NOT PAVED

NOT PAVED

NOT PAVED

NOT PAVED

NOT PAVED

NOT PAVED

NOT PAVED

NOT PAVED

NOT PAVED

NOT PAVED

NOT PAVED

NOT PAVED

NOT PAVED

NOT PAVED

NOT PAVED

NOT PAVED

NOT PAVED

NOT PAVED

NOT PAVED

NOT PAVED

NOT PAVED

NOT PAVED

NOT PAVED

NOT PAVED

NOT PAVED

NOT PAVED

NOT PAVED

NOT PAVED

NOT PAVED

NOT PAVED

NOT PAVED

NOT PAVED

NOT PAVED

NOT PAVED

NOT PAVED

NOT PAVED

NOT PAVED

NOT PAVED

NOT PAVED

NOT PAVED

NOT PAVED

NOT PAVED

NOT PAVED

NOT PAVED

NOT PAVED

NOT PAVED

NOT PAVED

NOT PAVED

NOT PAVED

NOT PAVED

NOT PAVED

NOT PAVED

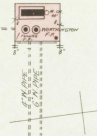
MAR. 1909
EARLINGTON
KY.

V A C R A N T

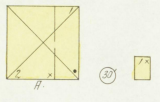
Located 1/4 Mile W of P.O.
NO EXPOSURE ANY SIDE.

Artificial
Lake

WATER WORKS PUMPING
STATION
NO WATCHMAN,
NO FIRE RISKS.



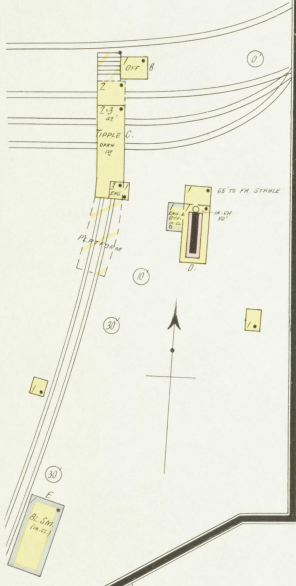
Located 2 Miles SW of P.O.
NO EXPOSURE ANY SIDE.



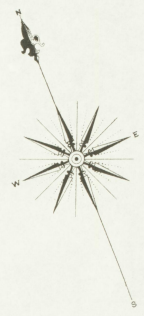
S T. B E R N A R D M I N I N G C O M P A N Y

B A R N S L E Y M I N E

RUN DAY & NIGHT.
CONSTANT WATCHMAN. NO CLOCK.
LIGHTS: ELECTRIC (OWN DYNAMO).
HEAT: STOVES, FUEL COAL.
NO FIRE RISK.

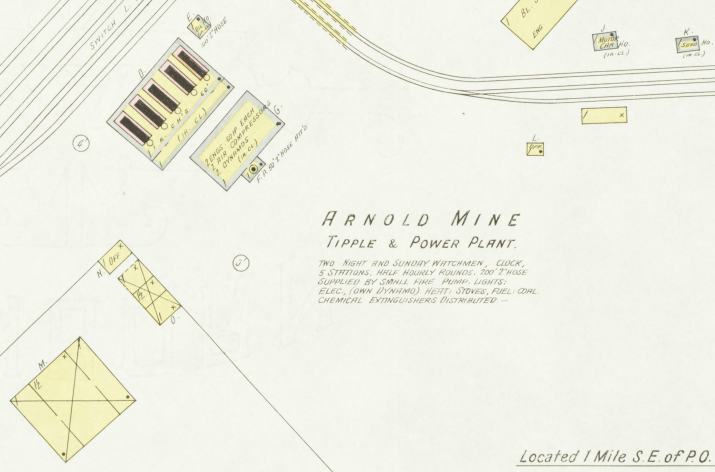


New No. 11 Mine TITTLE
FOR REPORT SEE BELOW



A R N O L D M I N E
TITTLE & POWER PLANT.

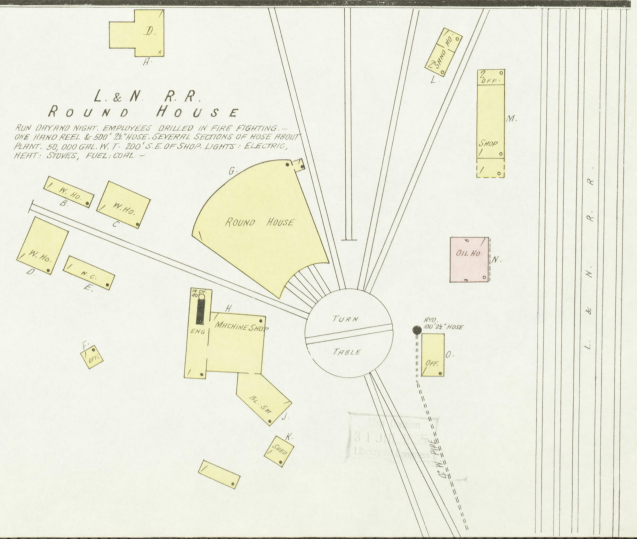
TWO NIGHT AND SUNDAY WATCHMEN. CLOCK.
5 STATIONS. SELF-POWERED. 2000 KW.
SUPPLIED BY SMALL PIPE PUMP. LIGHTS:
ELECT. (OWN DYNAMO). HEAT: STOVES, FUEL COAL.
CHEMICAL. EXPLOSIVES RESTRICTED.



Located 1 Mile S.E. of P.O.
NO EXPOSURE ANY SIDE.

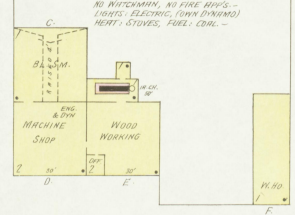
L. & N. R.R.
R O U N D H O U S E

RUN DAY AND NIGHT. EMPLOYEES DRILLED IN FIRE FIGHTING.
ONE HAND KEEL & 500' IN WATER. SEVERAL SECTIONS OF ROSE HURST
PLANT. 50,000 GAL. W. T. 200' S. E. OF SHOP. LIGHTS: ELECTRIC.
HEAT: STOVES, FUEL COAL.



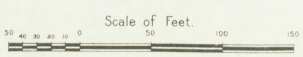
E A R L I N G T O N I R O N W O R K S
M. HANNA SR., PROP.

NO WATCHMAN. NO FIRE RISKS.
LIGHTS: ELECTRIC (OWN DYNAMO).
HEAT: STOVES, FUEL COAL.



C. M. E. CHURCH
2. 10 TO 2000
HEAT: STOVES, KEROSENE LAMP.

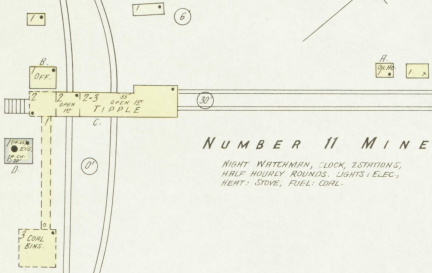
NEGRO PUBLIC
SCHOOL
HEAT: STOVES,
NO LIGHTS.



N O E X P O S U R E

M C E W E N

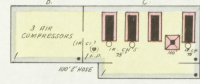
Located 3/4 Mile N.W. of P.O.
NO EXPOSURE ANY SIDE.



NUMBER 11 MINE

NIGHT WATCHMAN, CLOCK, SCALES,
HALF HOURLY ROUNDS, LIGHTS, ELEC.,
HEAT, STOVES, FUEL, COAL.

Located 1/2 Miles N. of P.O.
NO EXPOSURE ANY SIDE



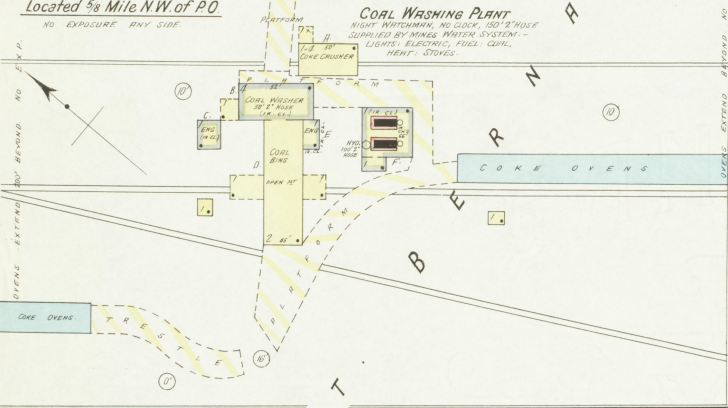
AIR COMPRESSOR

NIGHT WATCHMAN, NO CLOCK,
NO 1/2 HOURLY ROUNDS SUPPLIED BY SMALL
PUMPS, LIGHTS, ELECTRIC, -
HEAT, STOVES, FUEL, COAL.

Located 5/8 Mile N.W. of P.O.
NO EXPOSURE ANY SIDE

COAL WASHING PLANT

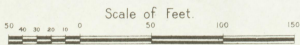
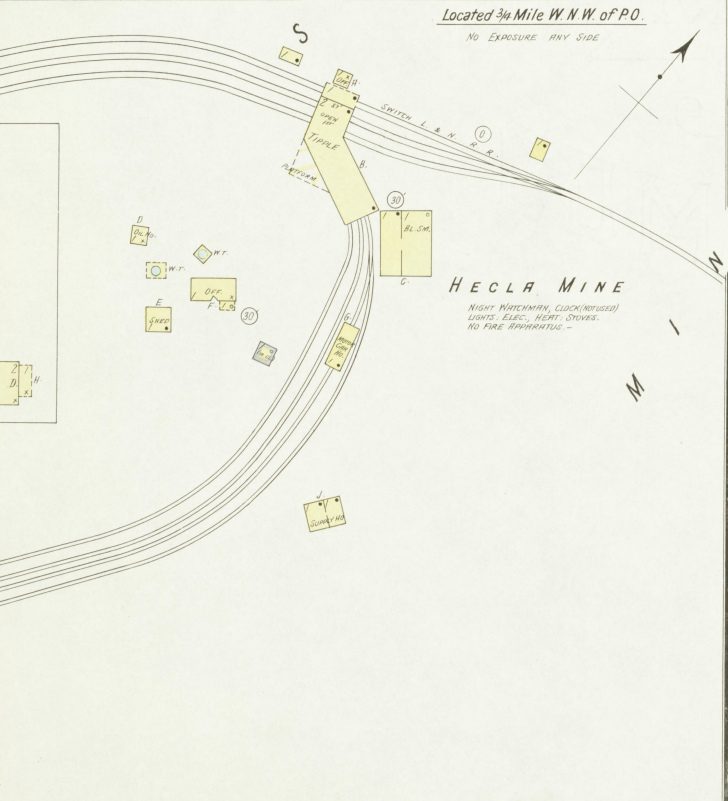
NIGHT WATCHMAN, NO CLOCK, 500' 2" HOSE
SUPPLIED BY MINES WATER SYSTEM -
LIGHTS, ELECTRIC, FUEL, COAL,
HEAT, STOVES.



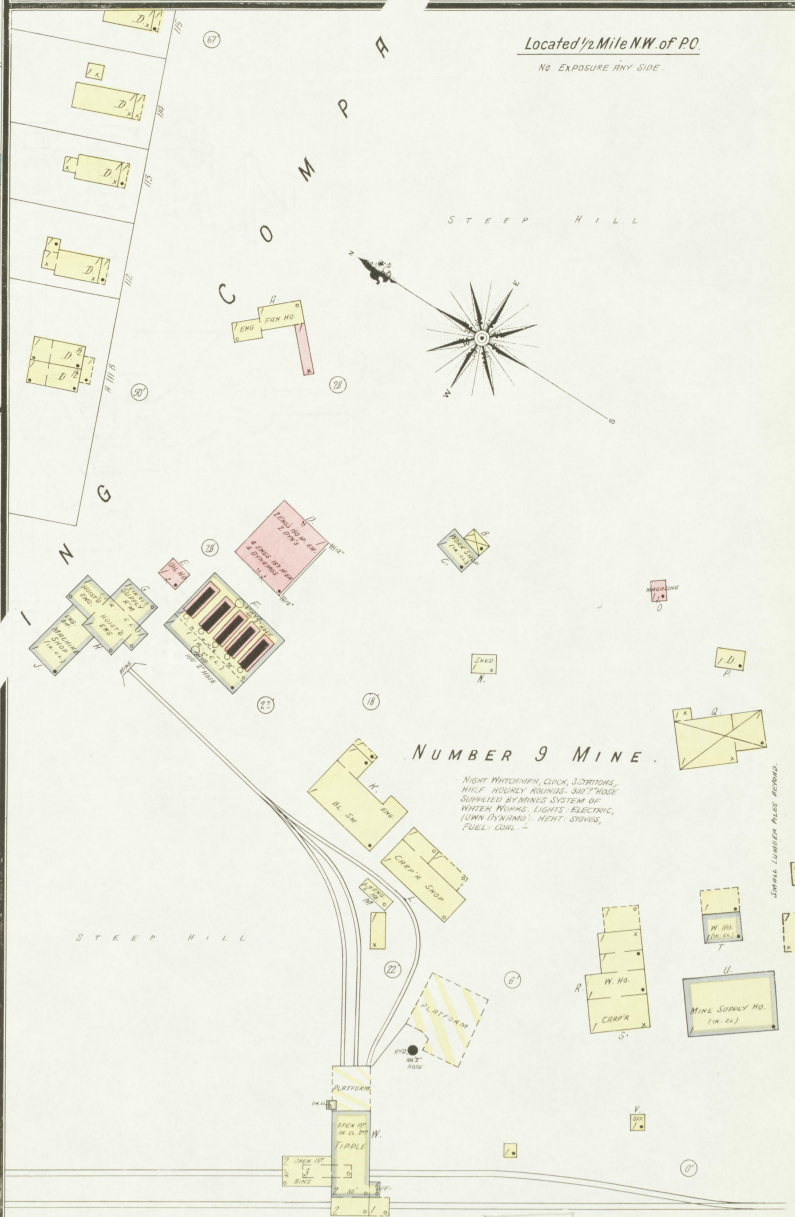
Located 3/4 Mile W.N.W. of P.O.
NO EXPOSURE ANY SIDE

HECLA MINE

NIGHT WATCHMAN, CLOCK (NOT USED)
LIGHTS, ELEC., HEAT, STOVES,
NO FIRE APPARATUS.



Located 1/2 Miles N. of P.O.
NO EXPOSURE ANY SIDE



NUMBER 9 MINE

NIGHT WATCHMAN, CLOCK, SCALES,
HALF HOURLY ROUNDS, 3/4" HOSE
SUPPLIED BY MINES SYSTEM OF
WATER PUMPS, LIGHTS, ELECTRIC,
(UNN. DYNAMO), HEAT, STOVES,
FUEL, COAL.

LOUISVILLE & NASHVILLE R. R.