

BROADWAY

CHERRY

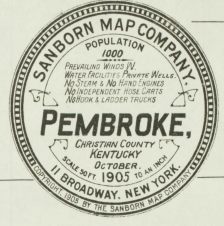
2

N. MAIN

JACKSON

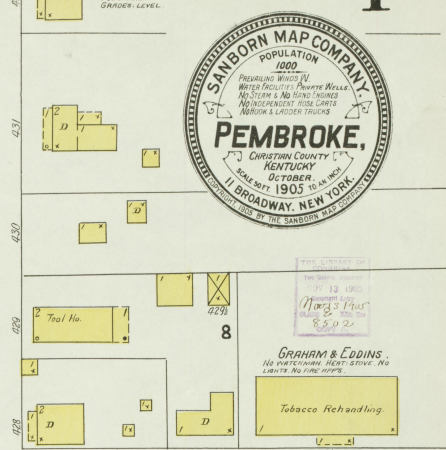
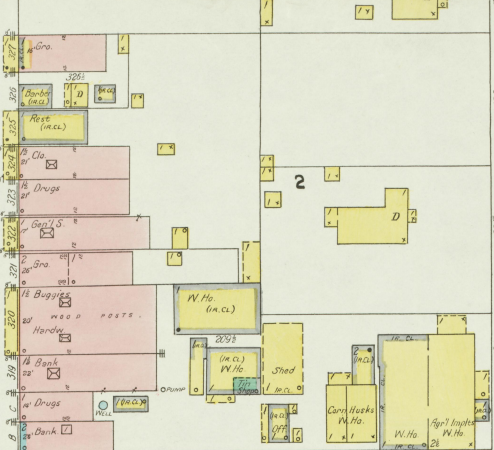
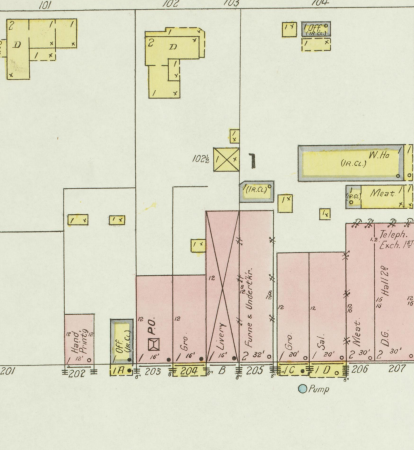
2 Sheets
8335

1



13 1903
Map's Price
\$3.00

GRAHAM & EDDINS.
NO WATCHMAN, HEAT, STEAK, NO
LIGHTS, NO CLOSET.



RAILROAD

LOUISVILLE & NASHVILLE R. R.

DEPOT

S. MAIN

COLLEGE

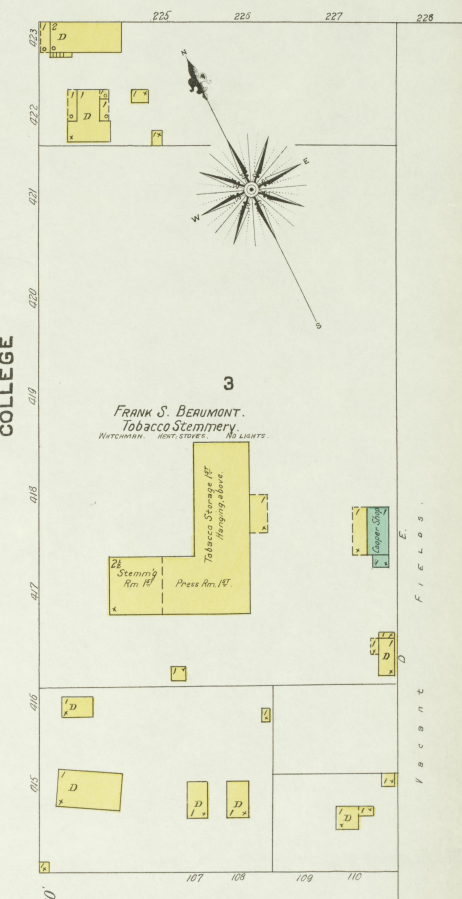
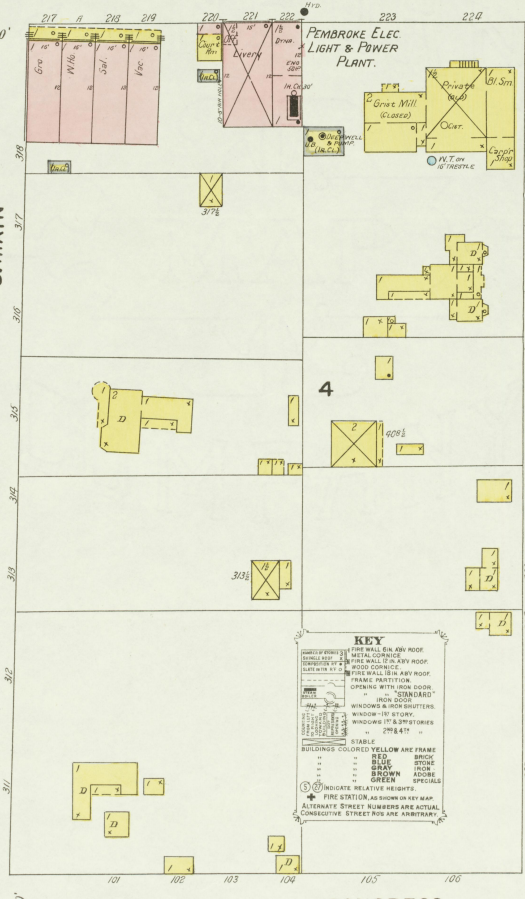
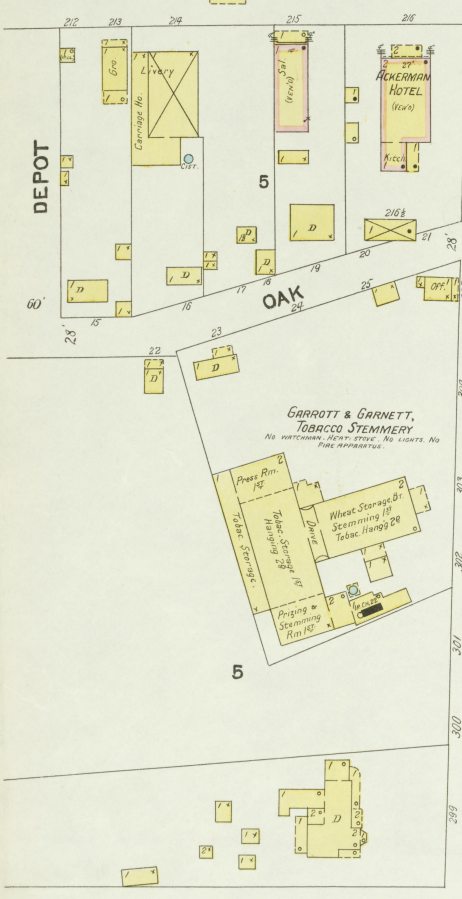
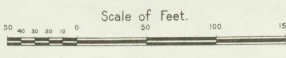
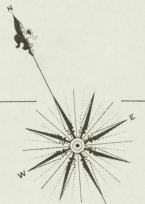
FRANK S. BERMONT.
Tobacco Stemmy.

KEY

- FIRE WALL, 6 IN. 2ND FLOOR
- METAL CORNER
- FIRE WALL, 12 IN. 1ST FLOOR
- WOOD CORNER
- ROOFING WITH ASP. ROOF
- FRAME PARTITION
- CORNER WITH ASP. ROOF
- IRON DOOR
- IRON DOOR
- WINDOW 1ST STORY
- WINDOW 2ND STORY
- WINDOW 3RD STORY
- 2ND & 3RD

BUILDINGS COLORED YELLOW ARE FRAME
 RED BRICK
 BLUE STONE
 GREEN STONE
 BROWN ADDED
 SPECIAL

INDICATES RELATIVE HEIGHTS
 FIRE STATION, AS SHOWN IN KEY MAP.
 ALTERNATE STREET NUMBERS ARE ACTUAL
 CONSECUTIVE STREET NUMBERS ARE ARBITRARY.



CONGRESS

7

Library of Congress

