

editorial matter, and has not inter-
the text has been carefully revised
itions,
mport-

et. A
16°.
\$1 00
original
ad been
k is its
cial.'—

one can
get. It

ments,
\$3 50
concep-
ng, and
mentary
. That
obvious
ter Ex-



CHARLES LAMB

ent and most important of the extant

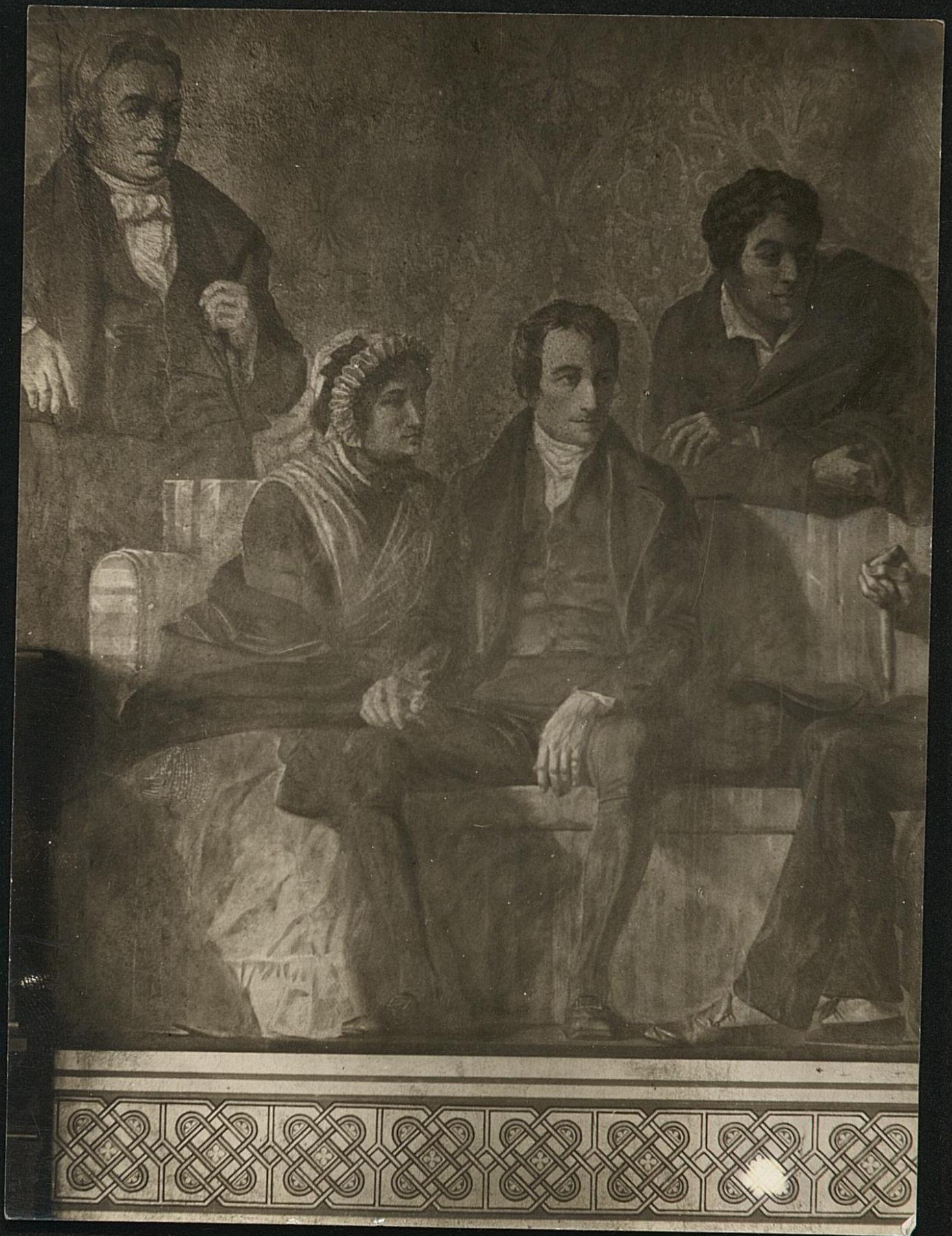
Charles Lamb





ERNEST DRESSEL NORTH
CHOICE RARE AND STANDARD BOOKS
587 FIFTH AVENUE
NEW YORK

Lamb



45068

ARTISTS ILLUSTRATORS, LTD.

17, FLEET STREET,

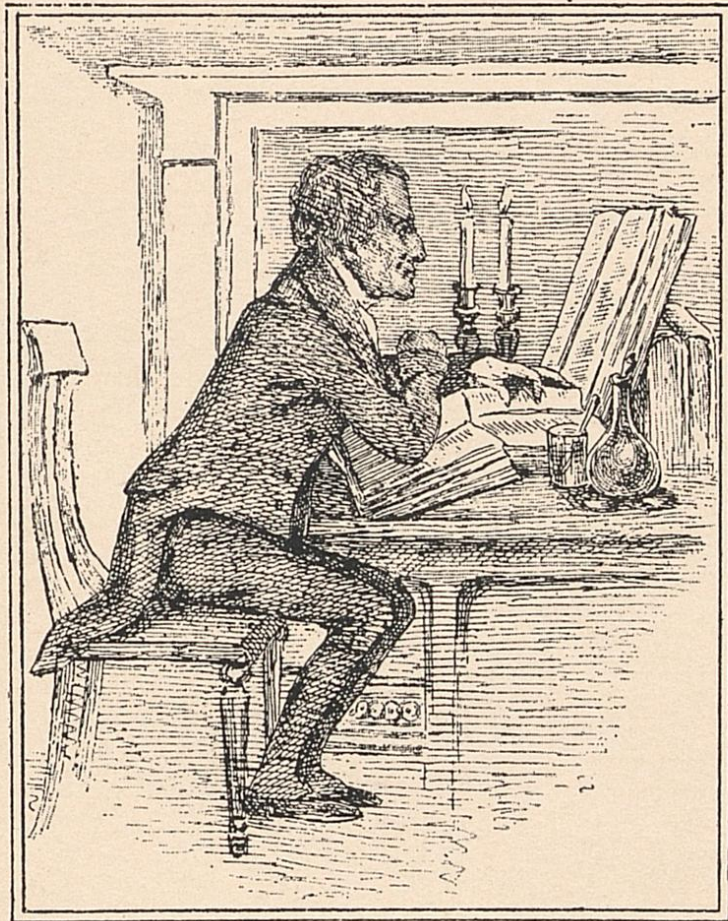
LONDON, E.C.

Donald Mackie

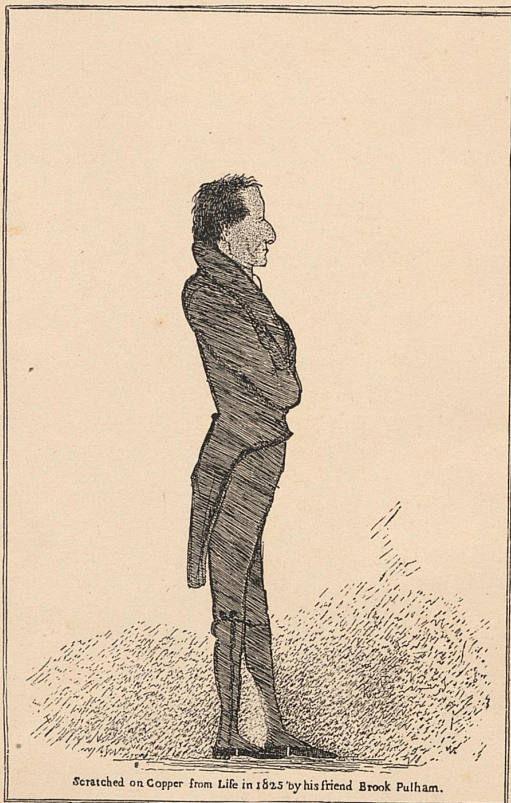
cut
↑

7546

✓
cut



Charles Lamb, after D. Maclise.



Scratched on Copper from Life in 1825 by his friend Brook Fulham.

Charles Lamb



Charles Lamb.

LONDON. FREDERICK WARNE & CO.



Drawn by J. Neumeier

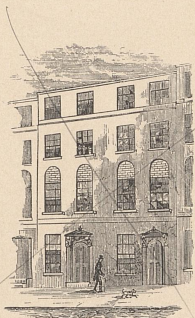
Engraved by W. Funder

Charles Lamb.

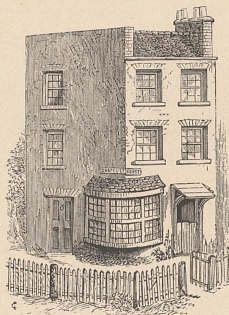








7, Little Queen Street.



Chapel Street, Pentonville.

this one



J. A. Vinter, lith.

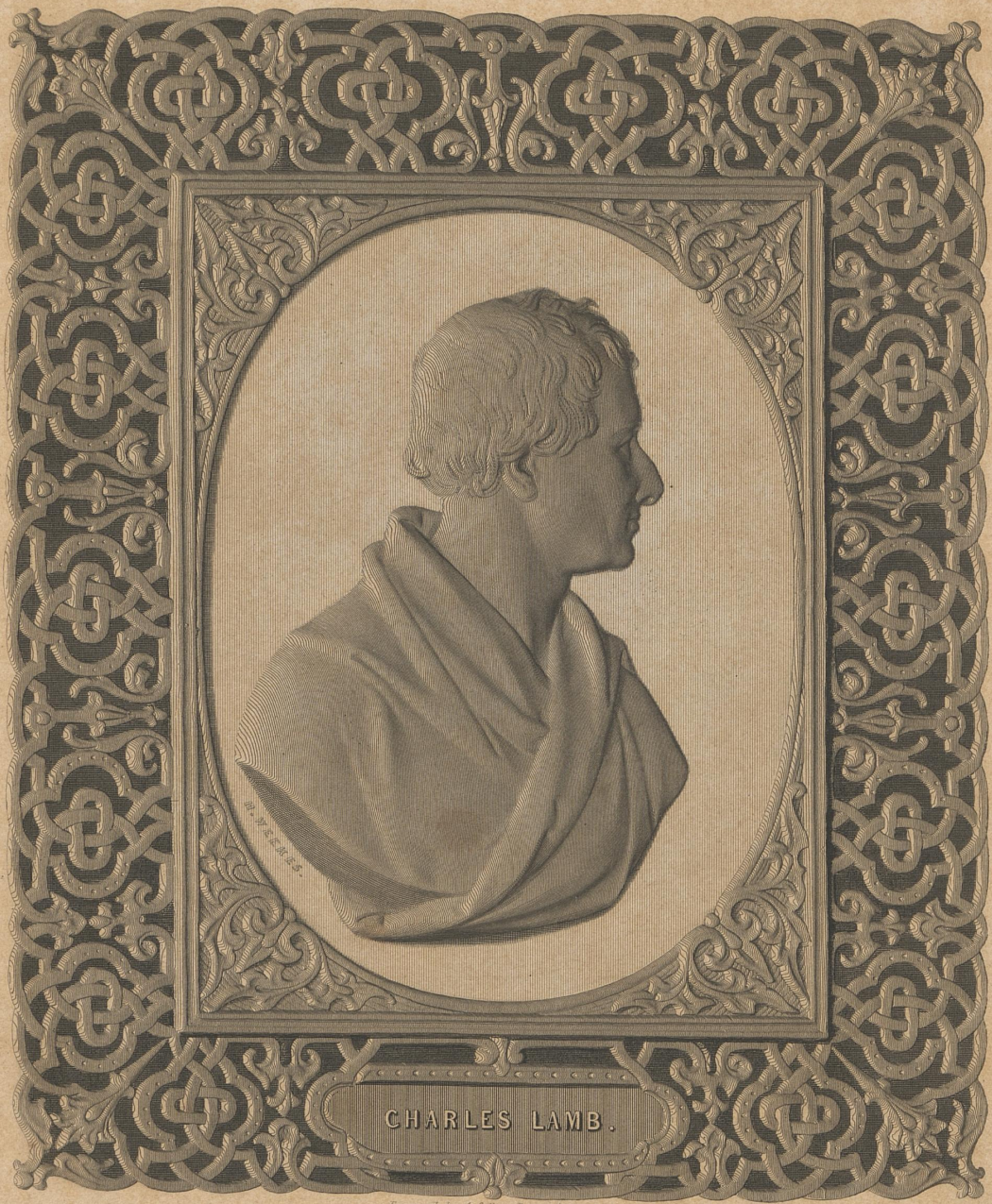
Day & Son, Limited, lith.

MARY LAMB.
(SISTER OF CHARLES LAMB)
(From a portrait by F. S. Cary.)



Leach's father

John Leach India Proof



Engraved by A. Collins Patens Process

R. Meekes

LONDON, PUBLISHED BY CHARLES WILT, 86 FLEET STREET.



J. A. Winter lith.

Day & Son Limited, Lith.

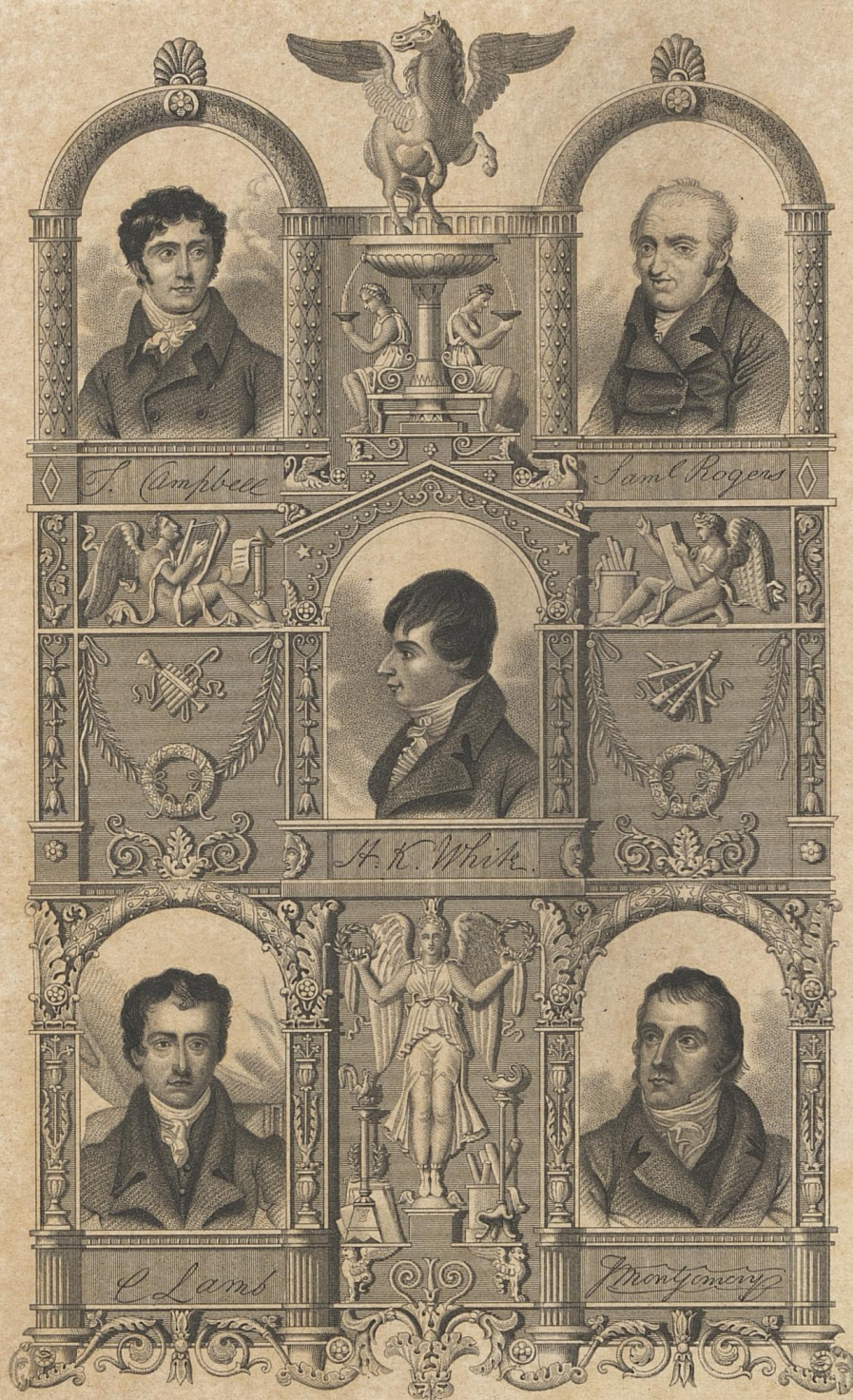
CHARLES LAMB.

(From a portrait by Meyer.)



India Proof

Leadb.





F. Groll

Yours truly
Edamb



F. Croll

*Yours truly
Edamb*

Portrait Gallery of Hogg's Weekly Instructor.

24



J. A. Vinter, lith.

Day & Son, Limited, Lith.

CHARLES LAMB.

(From a portrait by Hazlitt.)



J. A. Viner. lith.

Day & Son, Limited, Lith.

CHARLES LAMB.

(From a portrait by F. S. Cary)

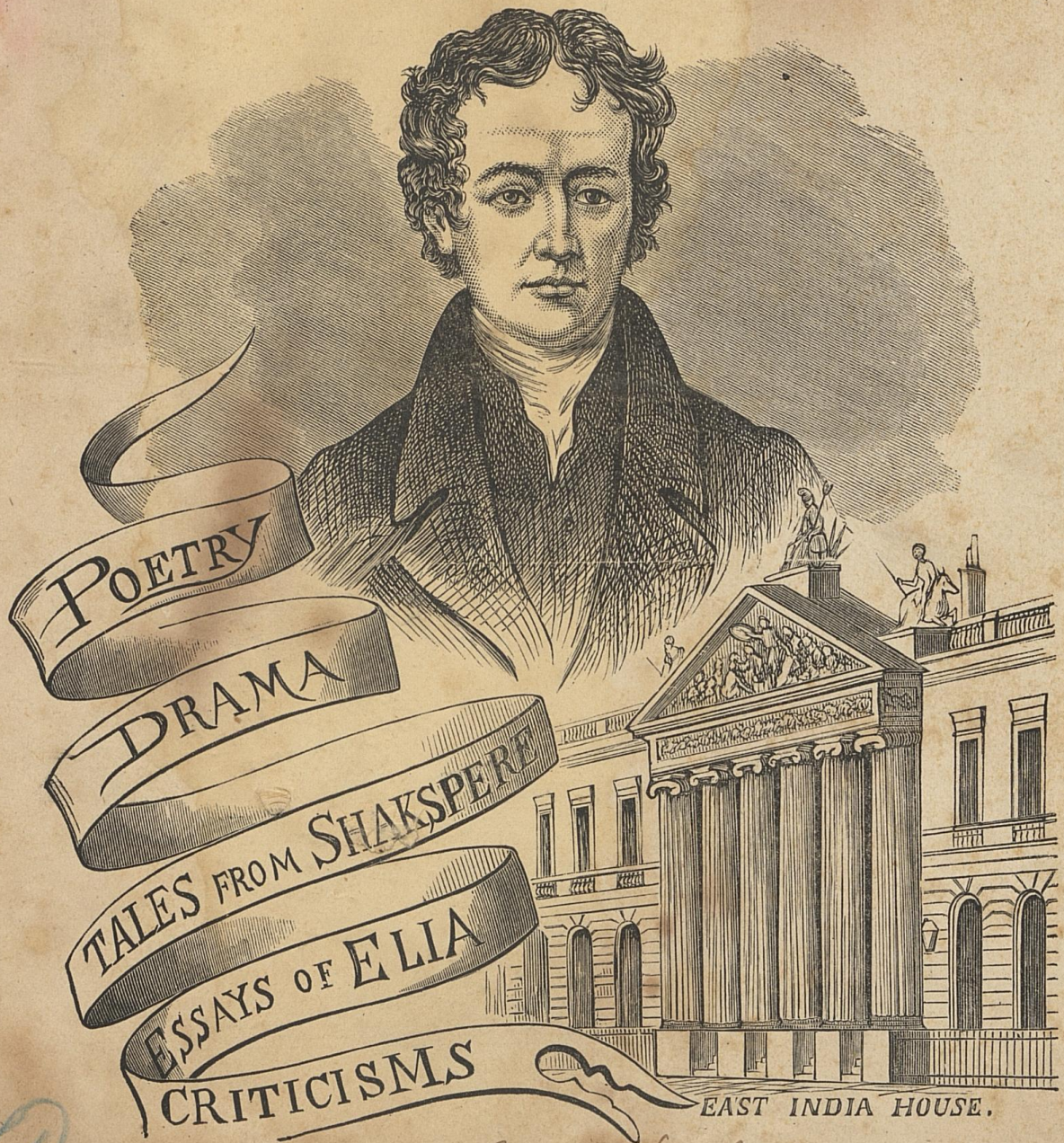


LAMB.

Rose



Saw a green meadow, fair with flowers besprent,
Azure and yellow, like the beautiful fields
Of England, when amid the growing grass
The blue-bell bends, the golden king-cup shines,
And the sweet cowslip scents the genial air,
In the merry month of May!
Oh, joy! the travellers



EAST INDIA HOUSE.

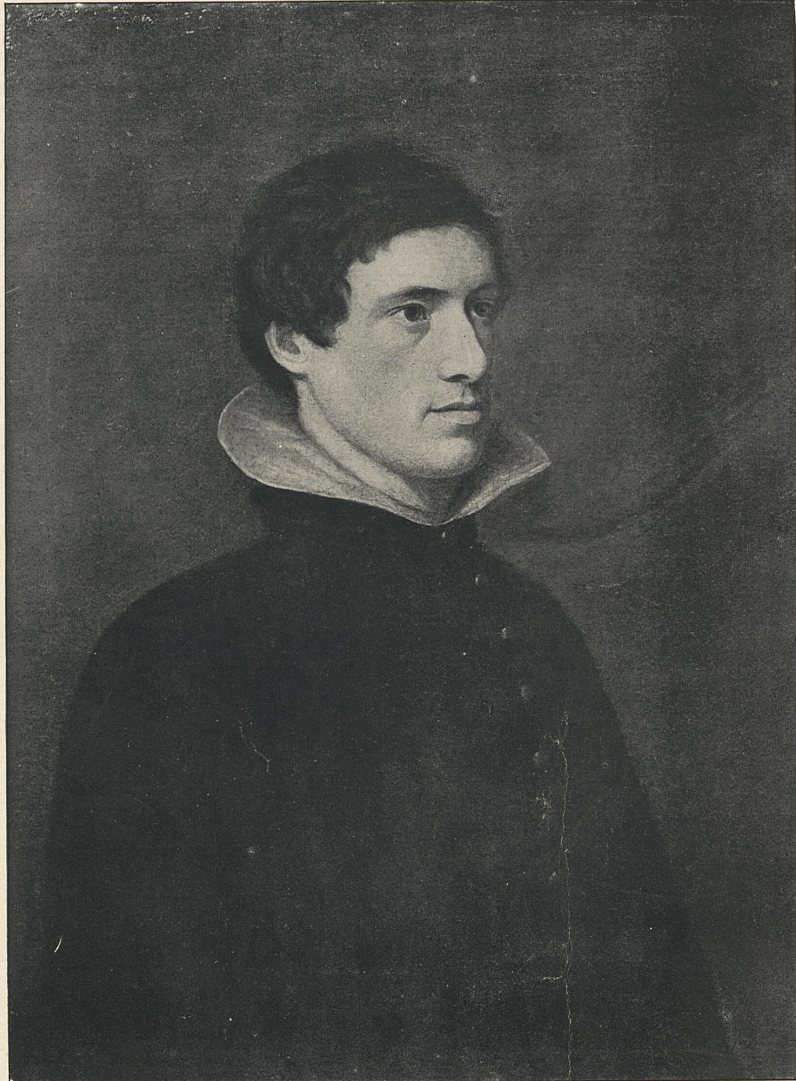
Charles Lamb

6



CHARLES LAMB.

From a Drawing by Hancock (1798) in the Possession of M. Cottle.



CHARLES LAMB (AT 30)

From the Picture by William Haslett in the National Portrait Gallery

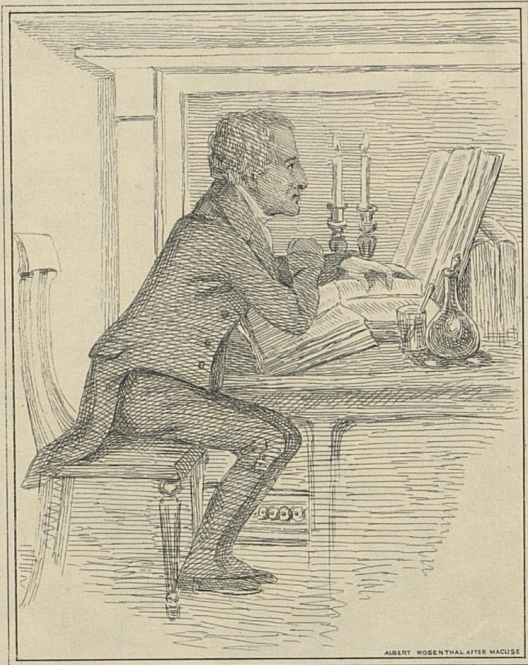


By Albert Rosenthal after Etching by Macken.

Ch. Lamb

For
Ernest A. North

Printed Plates 50 printed only.
Hobbs & Co.



Ex Libris
Frank Evans Marshall.
MDCCCXCV.



Chamb.



S. H. Carey del.

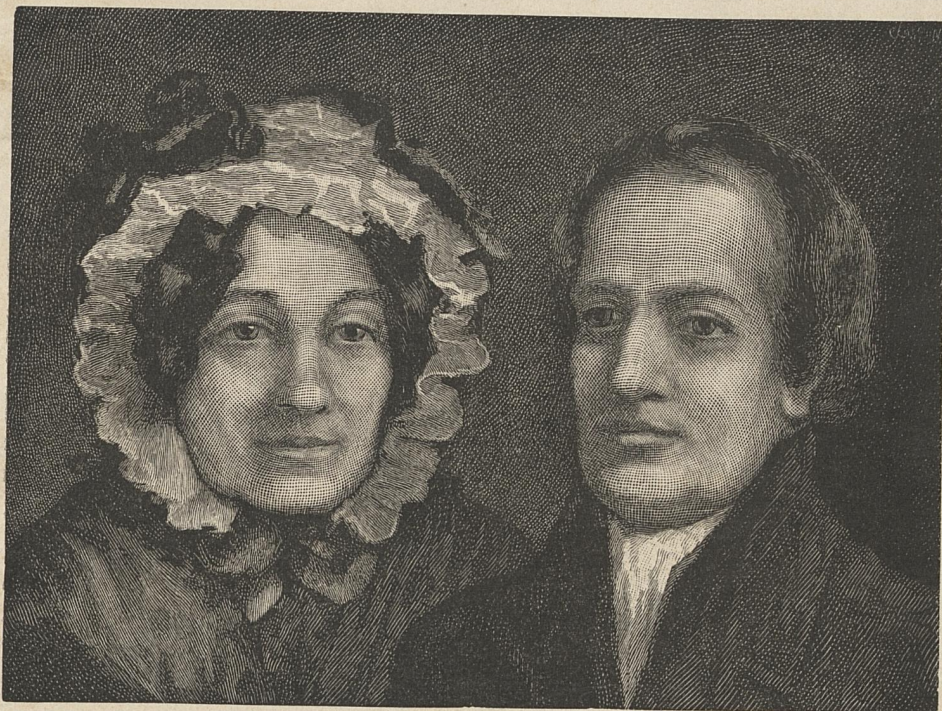
Mary Saxe after Portrait by F. S. Carey



by Albert Rosenthal after Etching by Macdon

Ch. Lamb

Albert Rosenthal



MARY AND CHARLES LAMB.





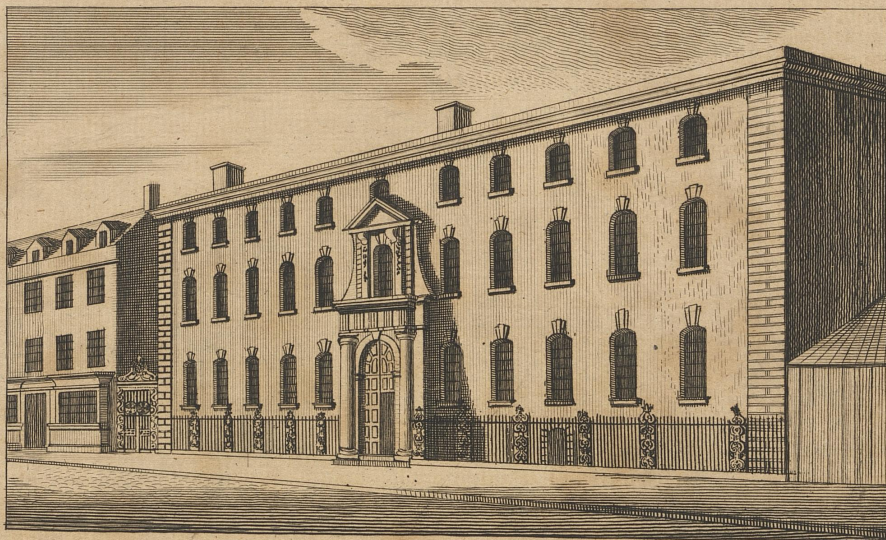
Painted by Meyer.

Engraved by H. Meyer.

Charles Lamb,

FISHER, SON, & CO. LONDON. 1841

Engraved for Harrison's History of London.



VIEW of the SOUTH SEA HOUSE.



Drawn by Tho. H. Shepherd.
PL. 143

Engraved by W. Wallis.

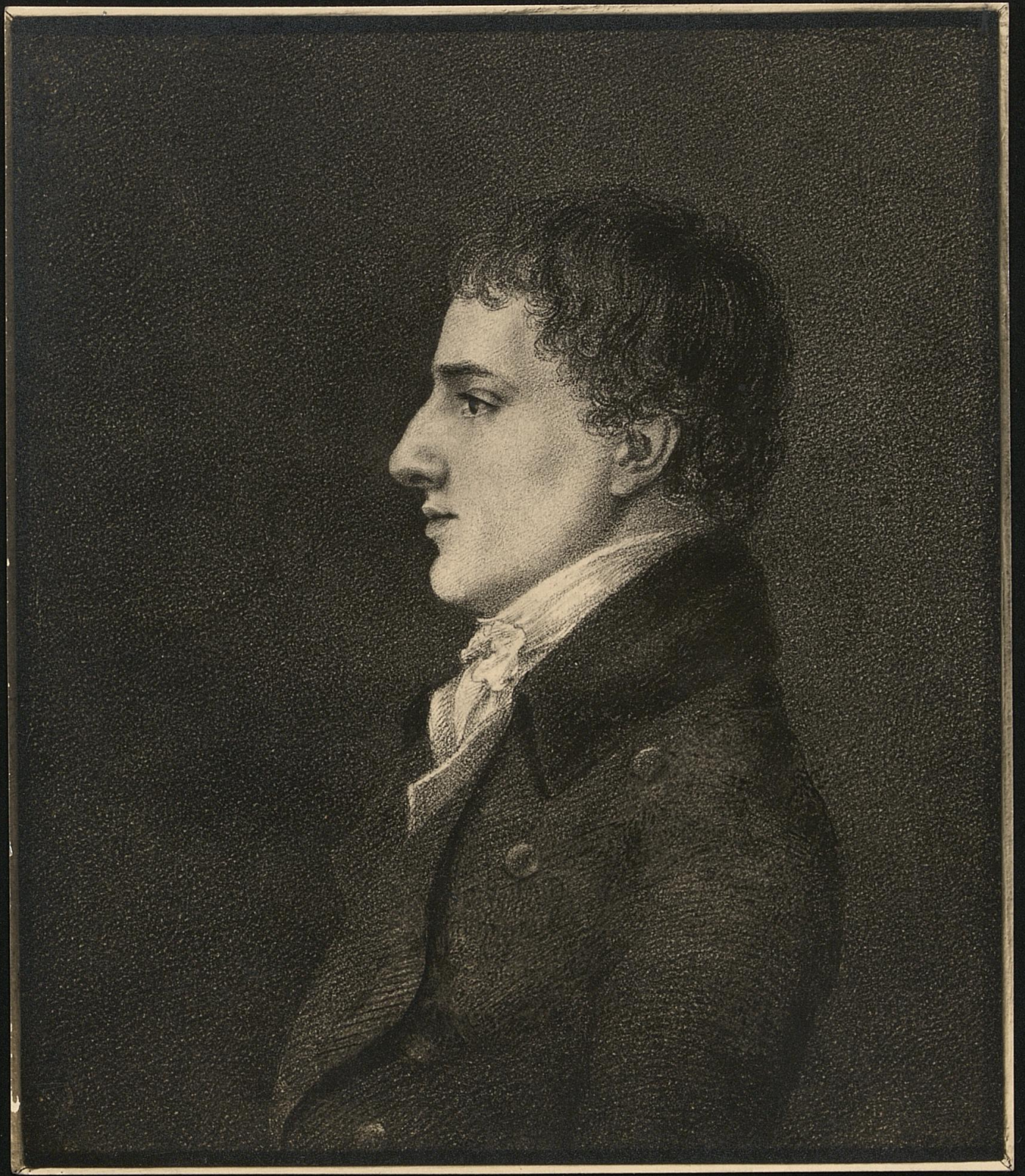
CHRIST'S HOSPITAL, NEWGATE STREET.

Jones & Co. Temple of the Muses, Finsbury Square, London, 1831.



S. ARLENT EDWARDS, SC.

Charles Lamb,



21

Reduce 5 to 4" →

Coop

52010

Reduce 6 1/16 to 5" →
(2 copies)

#2

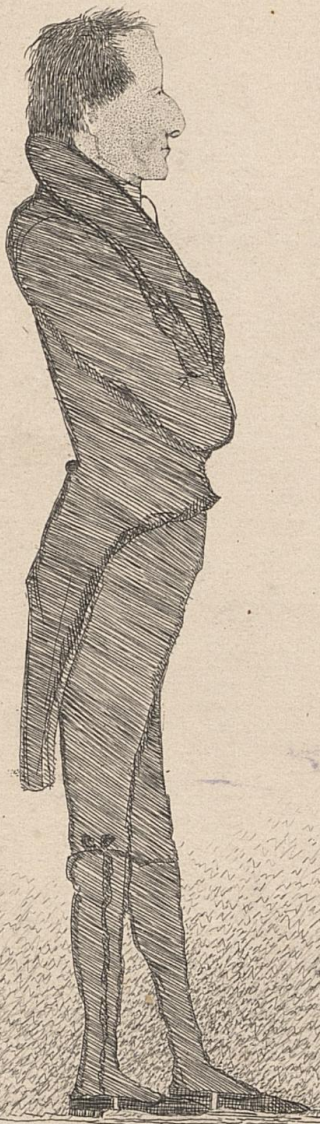
Aged 23

449

2



449 has Lamb



Scratched on Copper from Life in 1825 by his friend Brook Pulham.

Charles Lamb



Charles Lamb,



Charles Lamb (?)



F. S. Joseph. A. R. A.

S. Arlett Edwards Sc.

Charles Lamb



By Albert Rosenthal after sketch by Mackay

Ch. Lamb

Albert Rosenthal



50. Anne Edwards Esq

COPYRIGHTED
1886

PROOF

3.

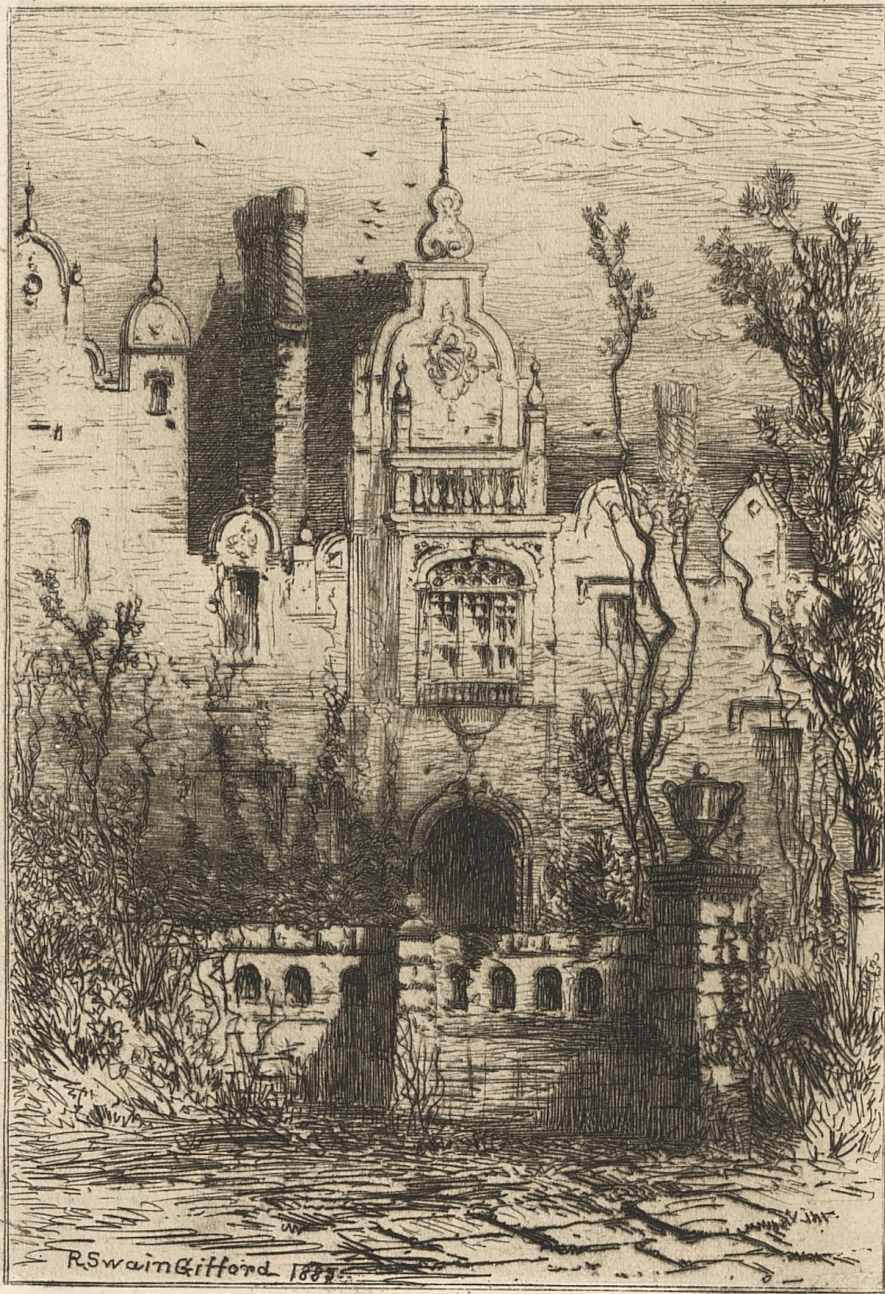
J. Albert Edwards



W. Lamb



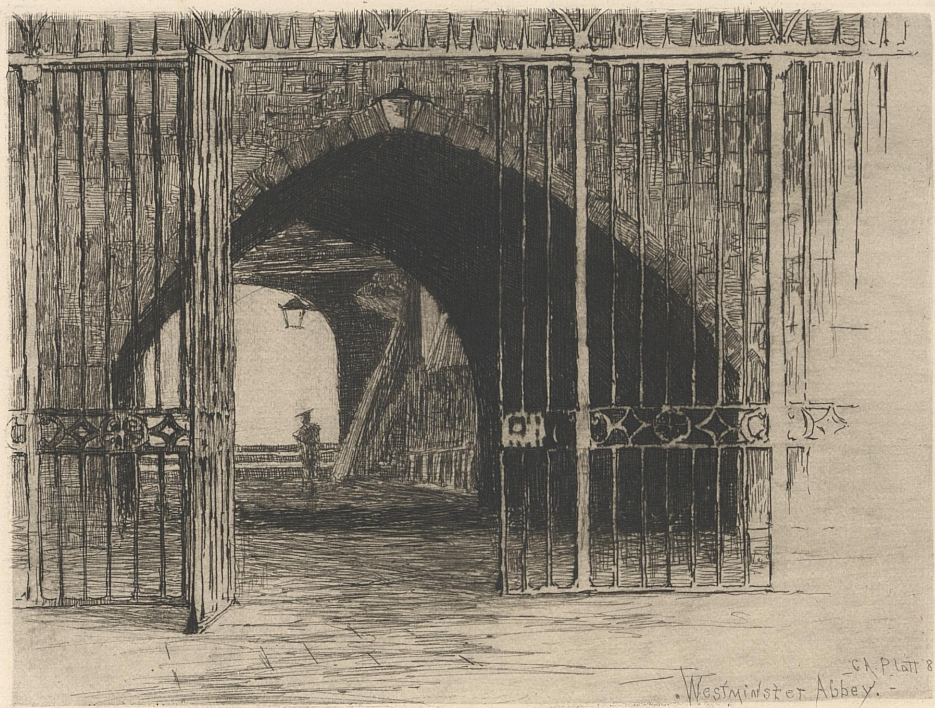
Captain Jacksons Cottage



Blakenmoor in H-shire



Detached Thoughts on books



ca. Platt 8.
Westminster Abbey.

Zonche in Westminster Abbey



The Sun Dial.