

Owensboro Ky. Jan'y. 20th 1890

We the undersigned Insurance Agents of the city of Owensboro Ky. have this day executed the new Insurance Map of this city made by the Sanborn-Perris Map Co. Lewis, of New York and find same to cover all necessary improvements and of this city and cheerfully recommend same to all companies doing business in Owensboro.

J. C. Ruddford & Co.
Gaus & Saunders
Chapman
Wm. McCortney
Marking Hartner
Waudling Duesenberg & Co.
Homan & Tedley
Austin Berry.

AMENDED REPORT, FEB. 1890.
FIRE DEPARTMENT—5 men paid, 4 horses. 1 Steam Fire Engine, 1 Double and 1 Single Hose Reel, 2000 feet of good Hose, 2 Runners, 1 Hook and Ladder Truck, 2 Babcock Fire Extinguishers, Gaynor Alarm System, 13 Boxes.

Owensboro

DAVIES COUNTY KENTUCKY

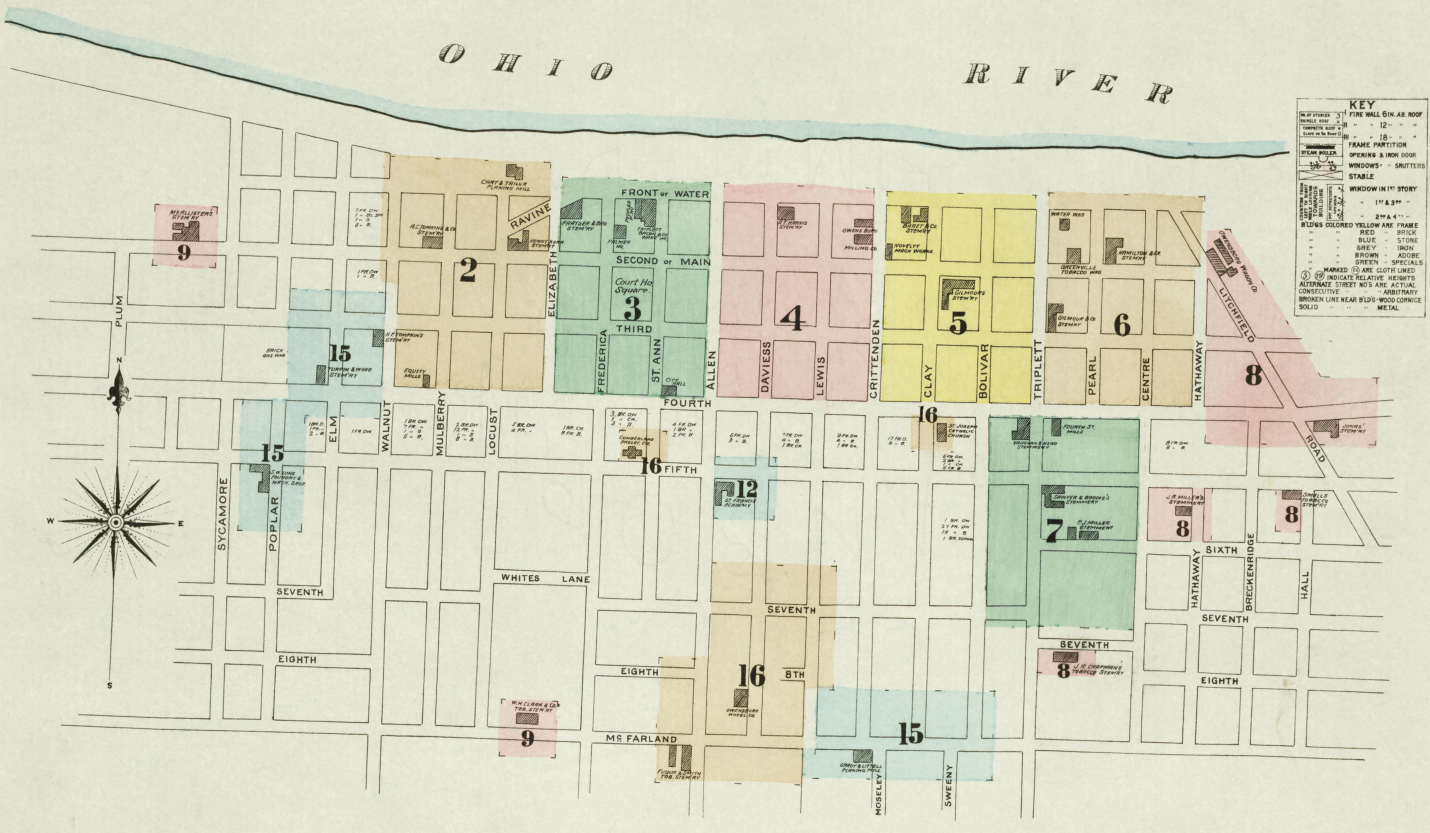
Sanborn-Perris Map Co. LIMITED

SCALE 50 FT. TO AN INCH
117 Broadway, New York

January 1890

POPULATION 14800
WATER FACILITIES Holly System of Water Works, Two Large Pumps, Capacity, Million Gals. per 24 hours, 12 Miles of Water Pipes, 20 double Hydrants, Average Pressure, 60 lbs. per Sq. Inch. Fire Pressure, 120 lbs.
FIRE DEPARTMENT, Paid
1 Steam Fire Engine, 1 Hose Cart, 1000 Ft. of good Hose, 3 Horses, Fire Alarm Telegraph, 13 Boxes.

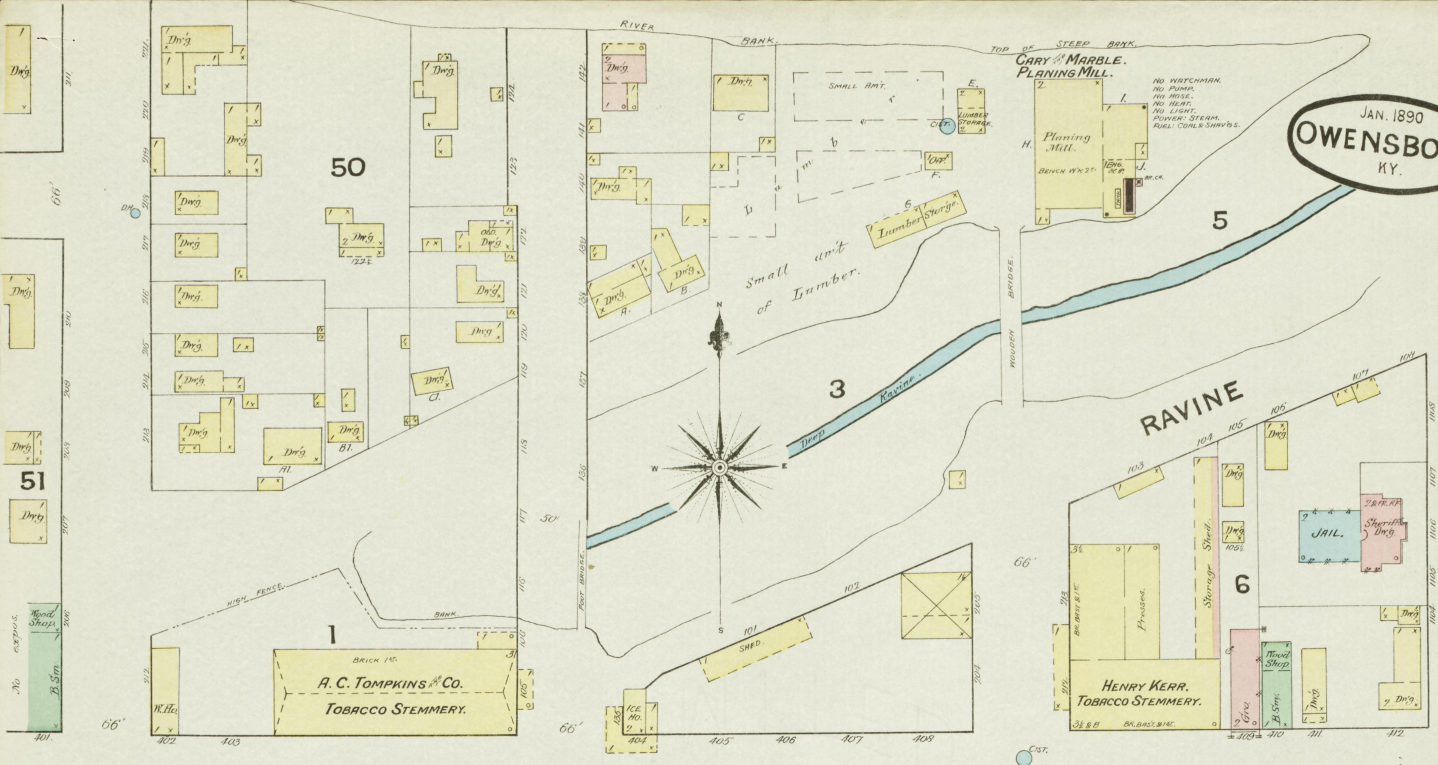
COPYRIGHT, 1890, BY THE SANBORN-PERRIS MAP CO. LIMITED



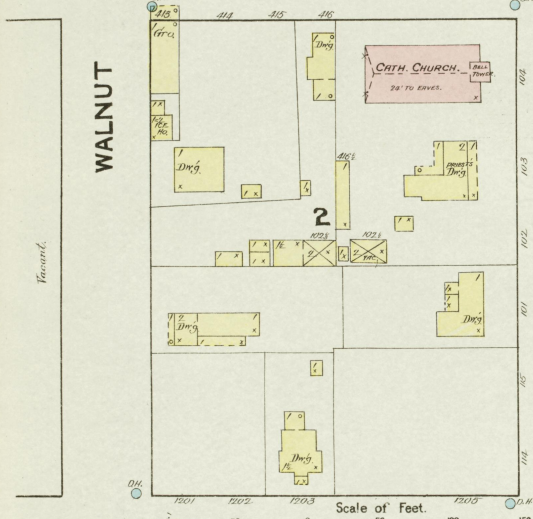
INDEX.

STREETS.		SPECIALS.	
Allen, East Side, N. of Fourth	74	Ames, F. A., Carriage Factory	2
West " near Fifth	75	Appleby, C. L., & Co., Distillery	2
West " N. of Fourth	76	Baptist Church	2
West " S. of Sixth	77	Berry, J. H., & Co., Tob. Stemmery	2
Bolivar, N. of Fourth	78	Berry, E. C., Distillery Co.	2
East Side, N. of Fourth	79	Bowman, J., & Son, Distillery	2
near McFarland	80	Bredendach, A., Brewery	2
Centre, N. of Fourth	81	German Cath. Church	2
East Side, N. of Fourth	82	Gilbert, J. W., Roller Mills	2
near McFarland	83	Glenora, A., Tob. Stemmery	2
Centre, N. of Fourth	84	Glenore Distilling Co.	2
West " Fifth to Sixth	85	Grady & Little, Planting Mill	2
Fourth to Crittenden	86	Greenville Tobacco Works	2
near McFarland	87	Griffin, J. B., & Son, Planting Mill	2
Crittenden, East Side, N. of Fourth	88	Guenter Building	2
West " near McFarland	89	H. Machine Works	2
Davies, N. of Fourth	90		
East Side, N. of Fourth	91		
near McFarland	92		
Centre, N. of Fourth	93		
East Side, N. of Fourth	94		
near McFarland	95		
Centre, N. of Fourth	96		
East Side, N. of Fourth	97		
near McFarland	98		
Centre, N. of Fourth	99		
East Side, N. of Fourth	100		
near McFarland	101		
Centre, N. of Fourth	102		
East Side, N. of Fourth	103		
near McFarland	104		
Centre, N. of Fourth	105		
East Side, N. of Fourth	106		
near McFarland	107		
Centre, N. of Fourth	108		
East Side, N. of Fourth	109		
near McFarland	110		
Centre, N. of Fourth	111		
East Side, N. of Fourth	112		
near McFarland	113		
Centre, N. of Fourth	114		
East Side, N. of Fourth	115		
near McFarland	116		
Centre, N. of Fourth	117		
East Side, N. of Fourth	118		
near McFarland	119		
Centre, N. of Fourth	120		
East Side, N. of Fourth	121		
near McFarland	122		
Centre, N. of Fourth	123		
East Side, N. of Fourth	124		
near McFarland	125		
Centre, N. of Fourth	126		
East Side, N. of Fourth	127		
near McFarland	128		
Centre, N. of Fourth	129		
East Side, N. of Fourth	130		
near McFarland	131		
Centre, N. of Fourth	132		
East Side, N. of Fourth	133		
near McFarland	134		
Centre, N. of Fourth	135		
East Side, N. of Fourth	136		
near McFarland	137		
Centre, N. of Fourth	138		
East Side, N. of Fourth	139		
near McFarland	140		
Centre, N. of Fourth	141		
East Side, N. of Fourth	142		
near McFarland	143		
Centre, N. of Fourth	144		
East Side, N. of Fourth	145		
near McFarland	146		
Centre, N. of Fourth	147		
East Side, N. of Fourth	148		
near McFarland	149		
Centre, N. of Fourth	150		

* Indicates only one side of Street shown.

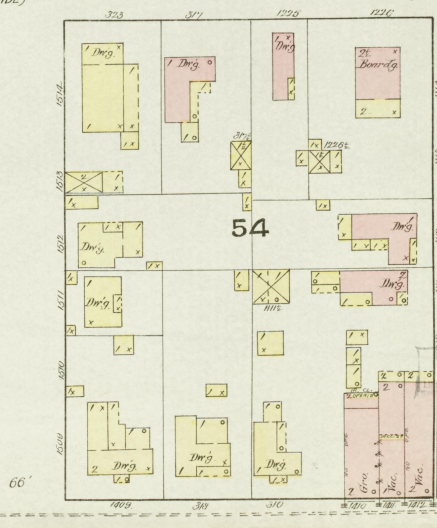
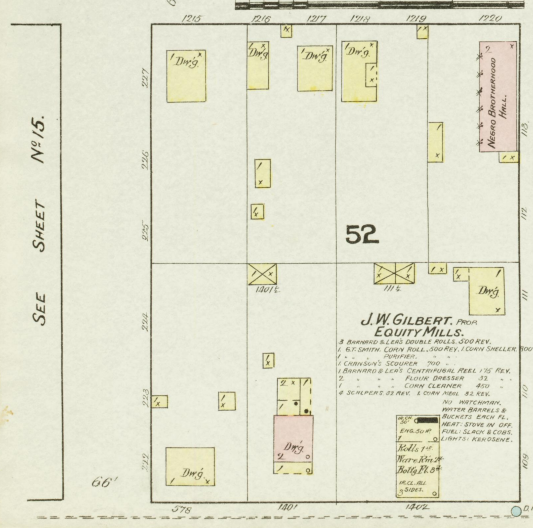


MAIN OR 2ND



ST. ELIZABETH

SHEET



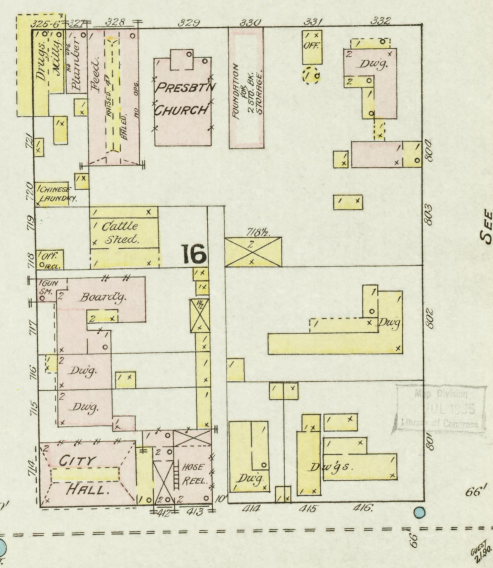
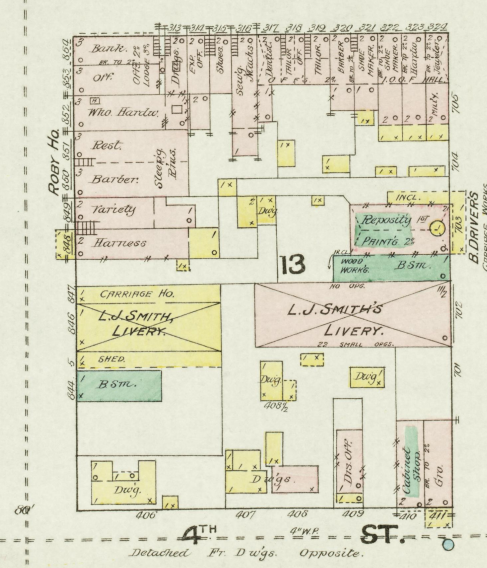
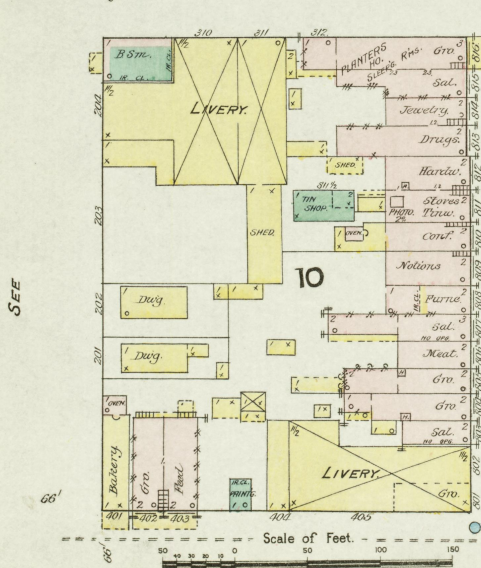
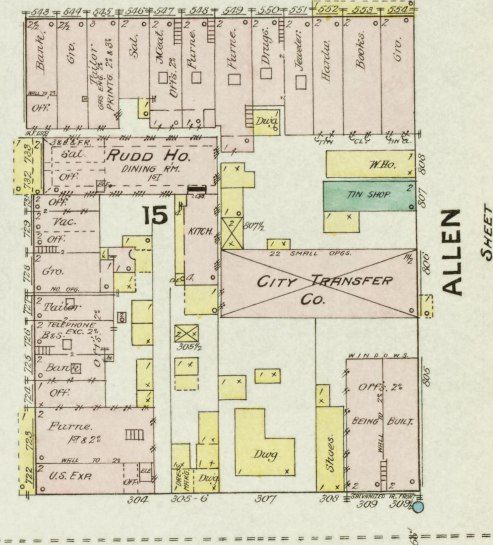
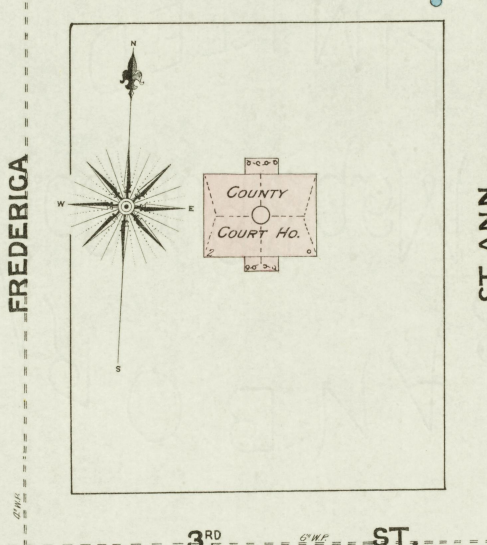
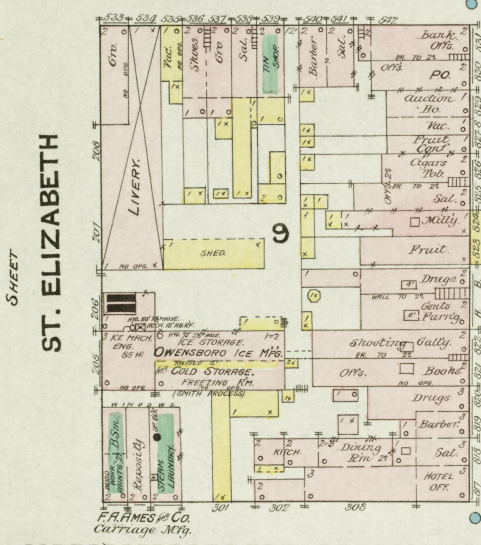
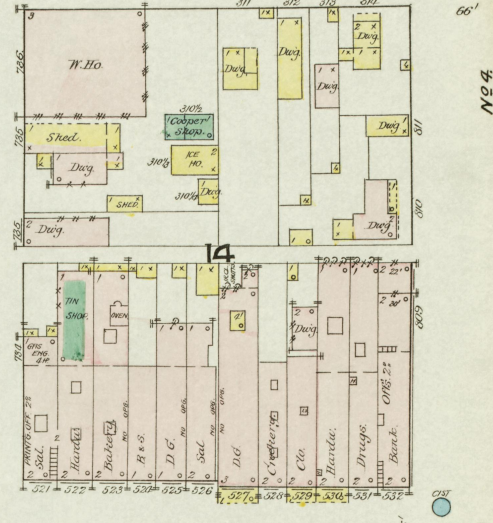
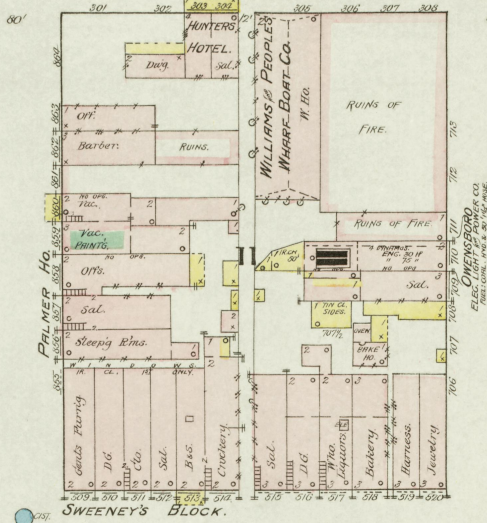
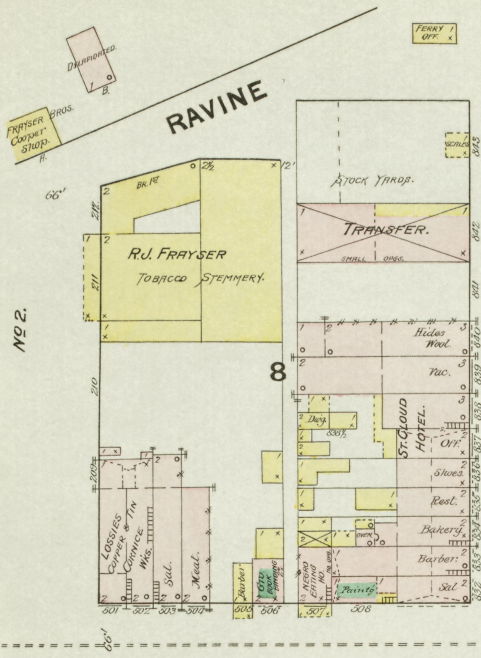
SEE

1890

SEE SHEET No. 15.

J.W. GILBERT FROM
EQUITY MILLS.
8 BARRETT & LEAS SCHWELZ MILLS 500 REV.
11 610 NORTH CORNER RAILROADS 1 CORNER SHELTER 100 REV. 51.
CORNER
C. CONNOR'S SECURITIES 200
BARNARD & LEAS CENTRAL HOUSE FUEL 150 REV.
2 - - - - - FLOWN OVERSEAS 12
CONN CLENDER 850
8 SCHULTZ'S 25 REV. 1 CORNER 100 REV. 82 REV.
NO INTERCOM.
PROTECT BARRIERS &
PROTECTS EACH FE.
NEAR STORES IN 1000.
MILL LANE 81000.
LANTA RAVENSONE.

WATER OR FRONT



Scale of Feet

Detached Fr. D'ys. Opposite.

NO. 2.

SHEET

ST. ELIZABETH

FREDERICA

ST. ANN

ALLEN

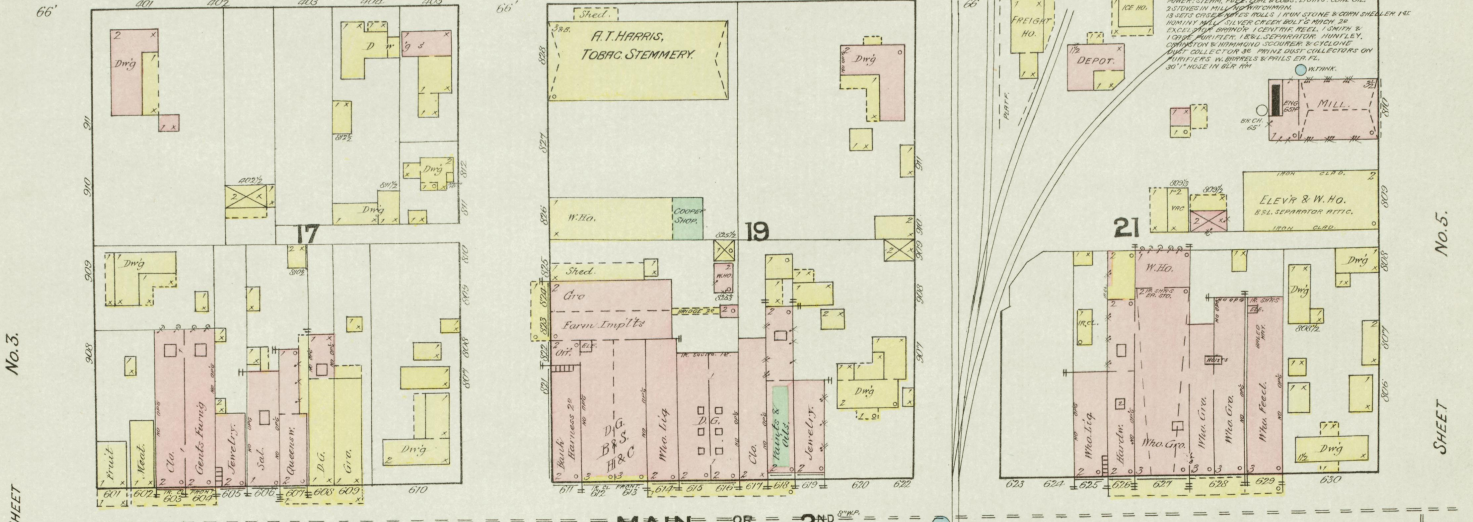
SHEET

SEE

SEE

NO. 4

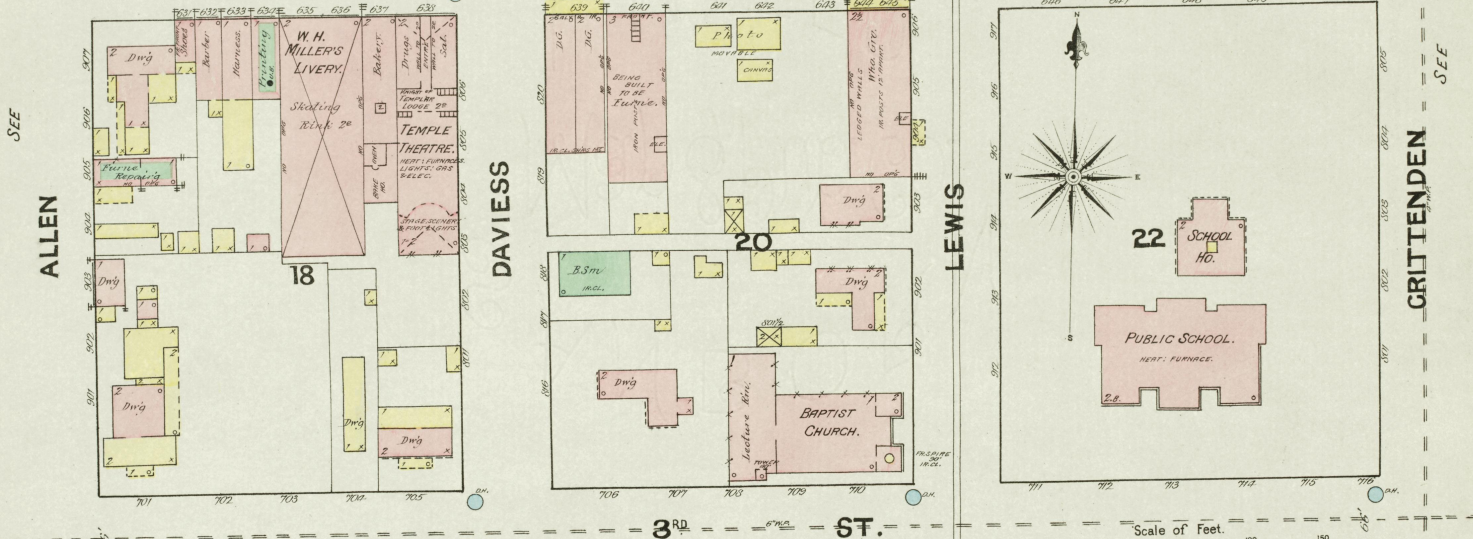
WATER OR FRONT



SEE SHEET No. 3.

SEE SHEET No. 5.

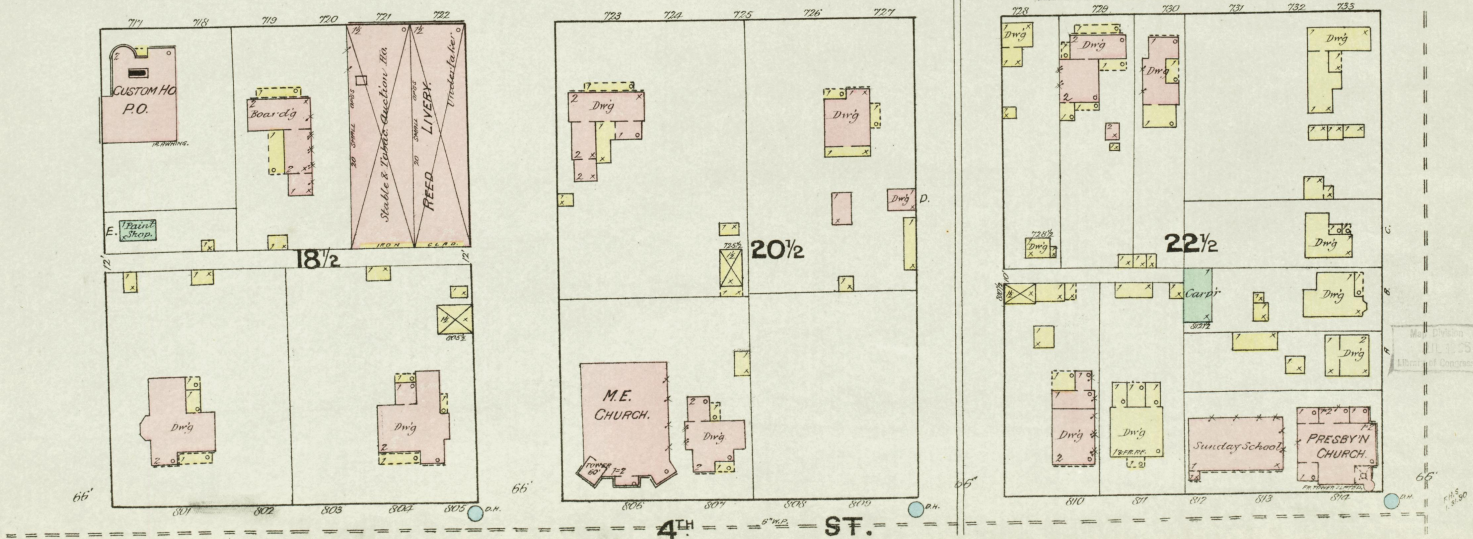
MAIN OR 2ND ST.



SEE SHEET ALLEN

SEE SHEET CRITTENDEN

3RD ST.

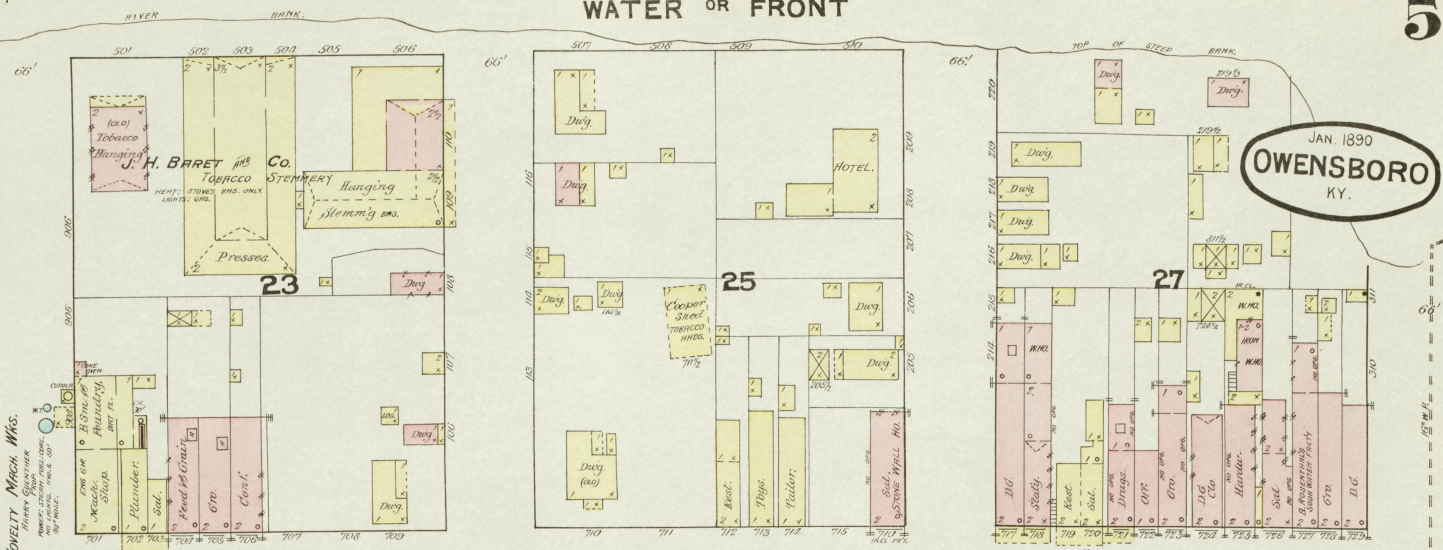


4TH ST.

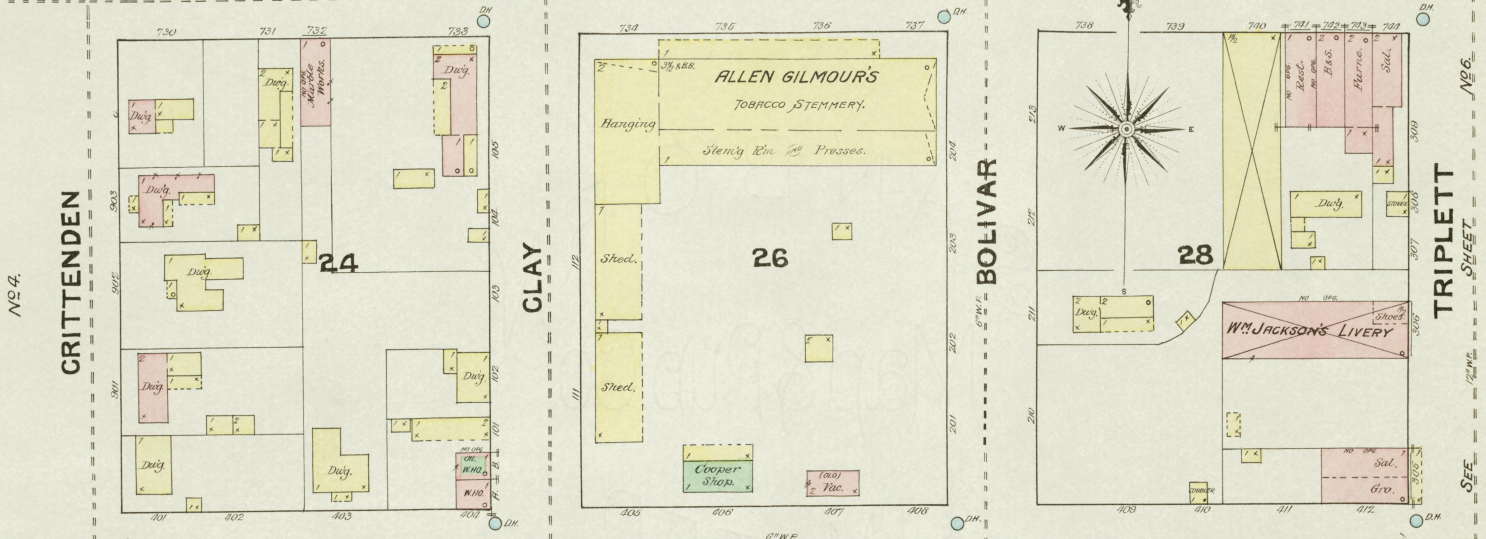
OHIO RIVER BEYOND.

WATER OR FRONT

5



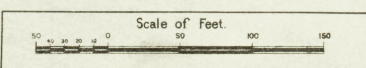
MAIN OR 2ND



3RD ST.



4TH ST.



SEE SHEET NO 16 DETACHED.

SEE SHEET NO 7.

NOVELTY, MACH. WKS. HARRY GLENNON

NO 4.

SHEET

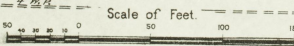
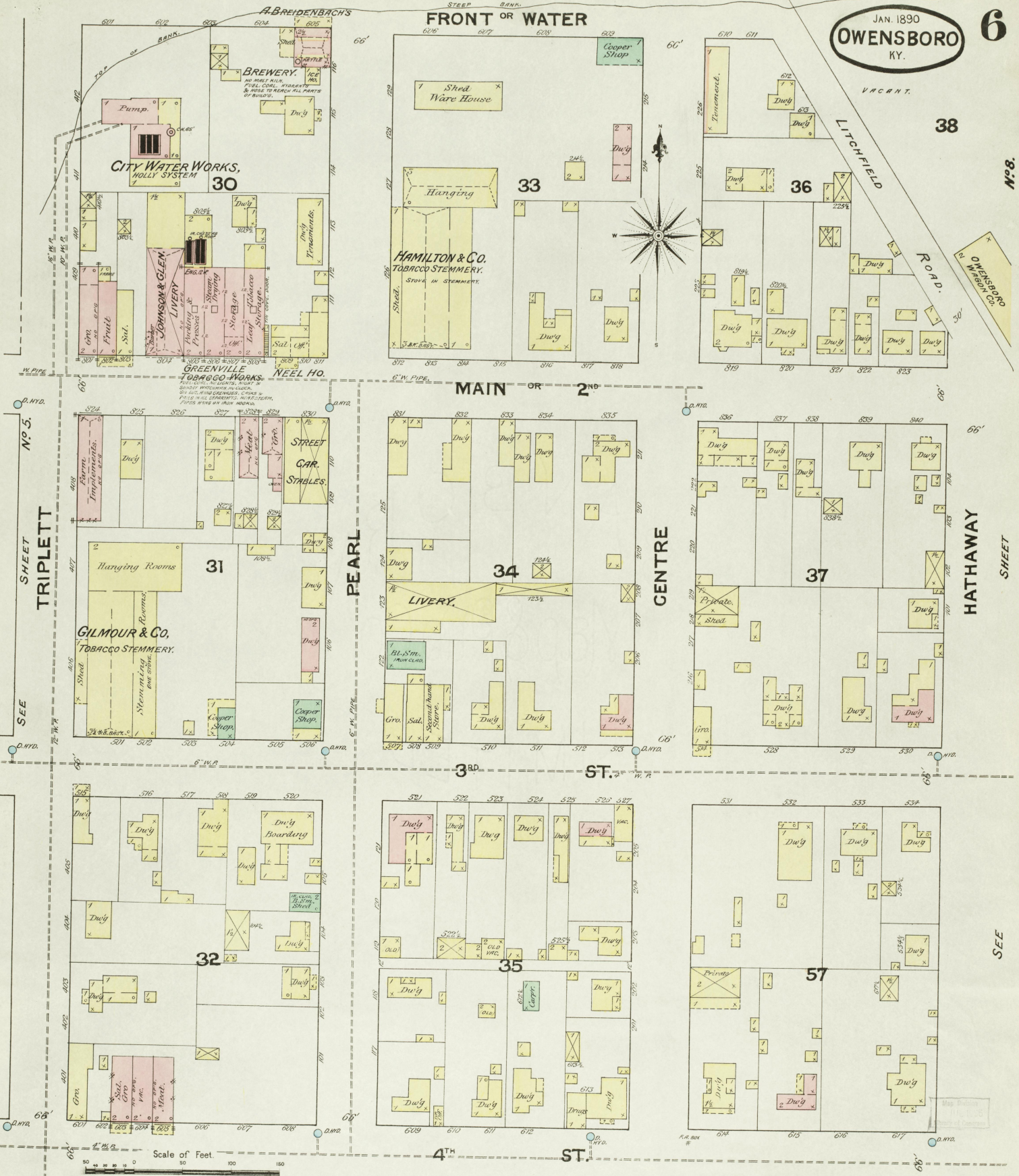
SEE

NO 6.

SHEET

SEE

NO 7.



SEE SHEET

N^o. 7.

SEE

SEE SHEET No. 5.

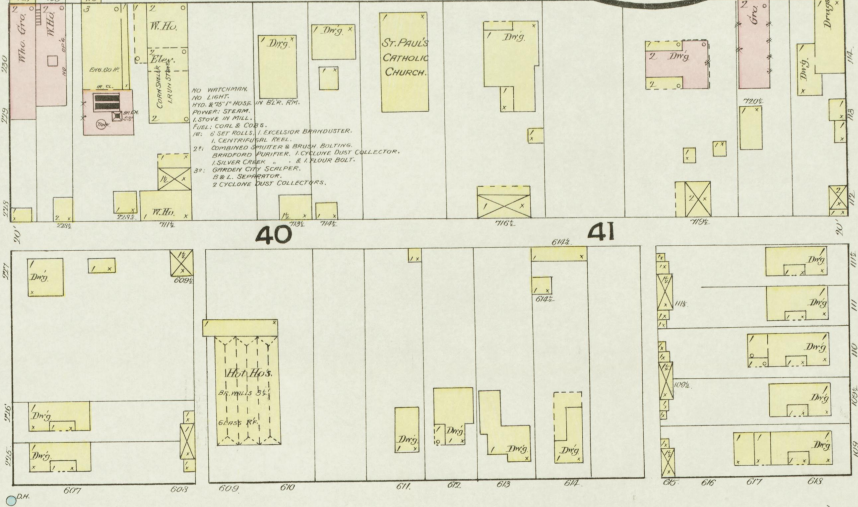
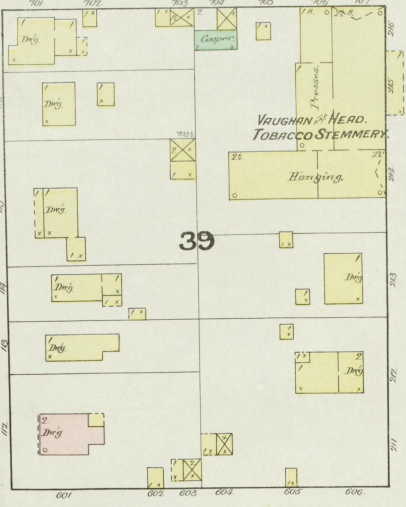
SEE

PEARL ST. SHEET

No. 6.

7

4th St. MILLS. 4th ST. OWENSBORO KY. JAN. 1890
DAVENPORT & BRANSFORD, Owners.



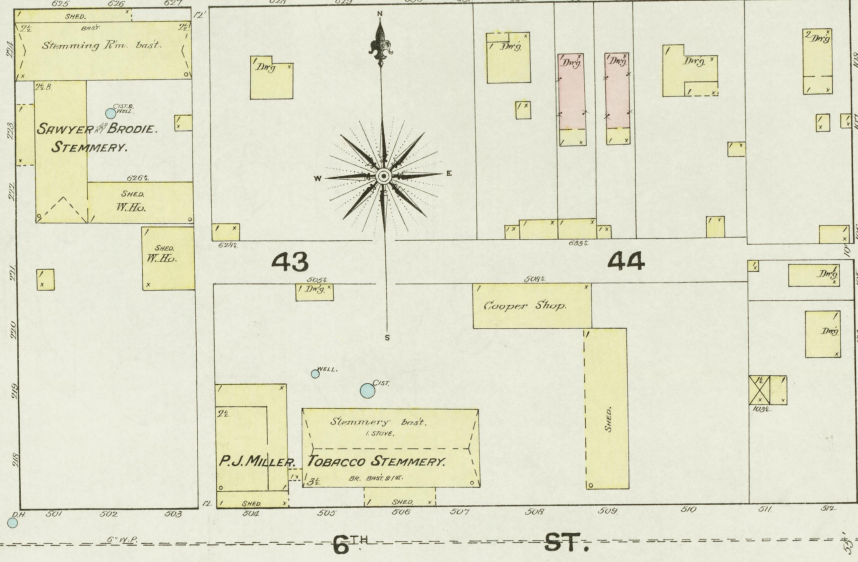
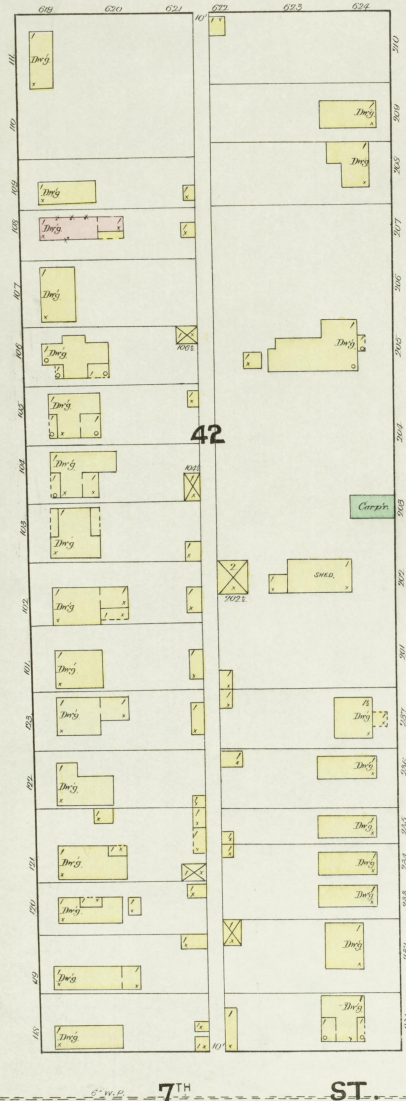
5th ST.

BOLIVAR

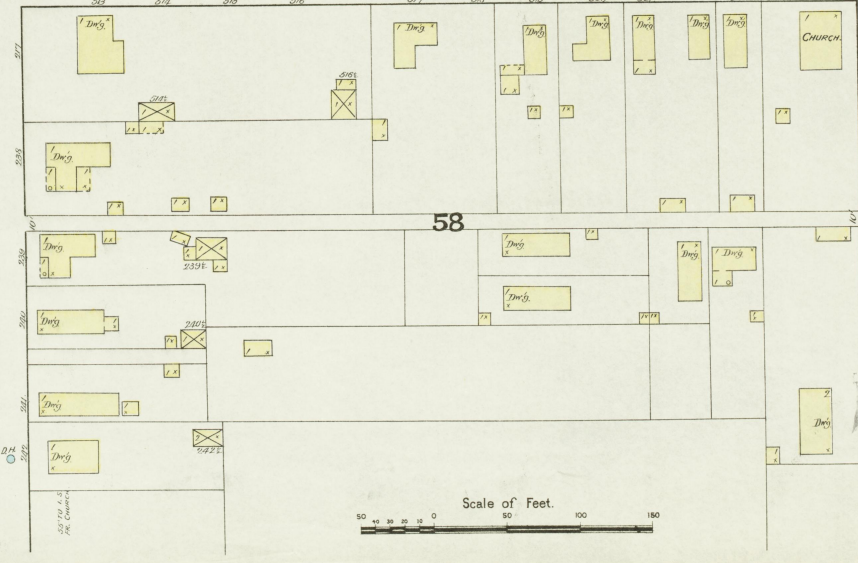
TRIPLETT

CENTRE

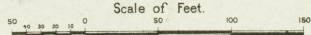
No. 8. SHEET SEE



6th ST.



7th ST.



66'

1890



29 OR
MAIN
ST.

NO. 6.

SHEET

SEE

SEE

SEE

SEE

HALL
ST.

ST.

5TH
ST.

HATHAWAY

ST.

ST.

ST.

ST.

ST.

Scale of Feet.
50 100 150

Tacant.

Map
1890

JAN. 1890
OWENSBORO
KY.

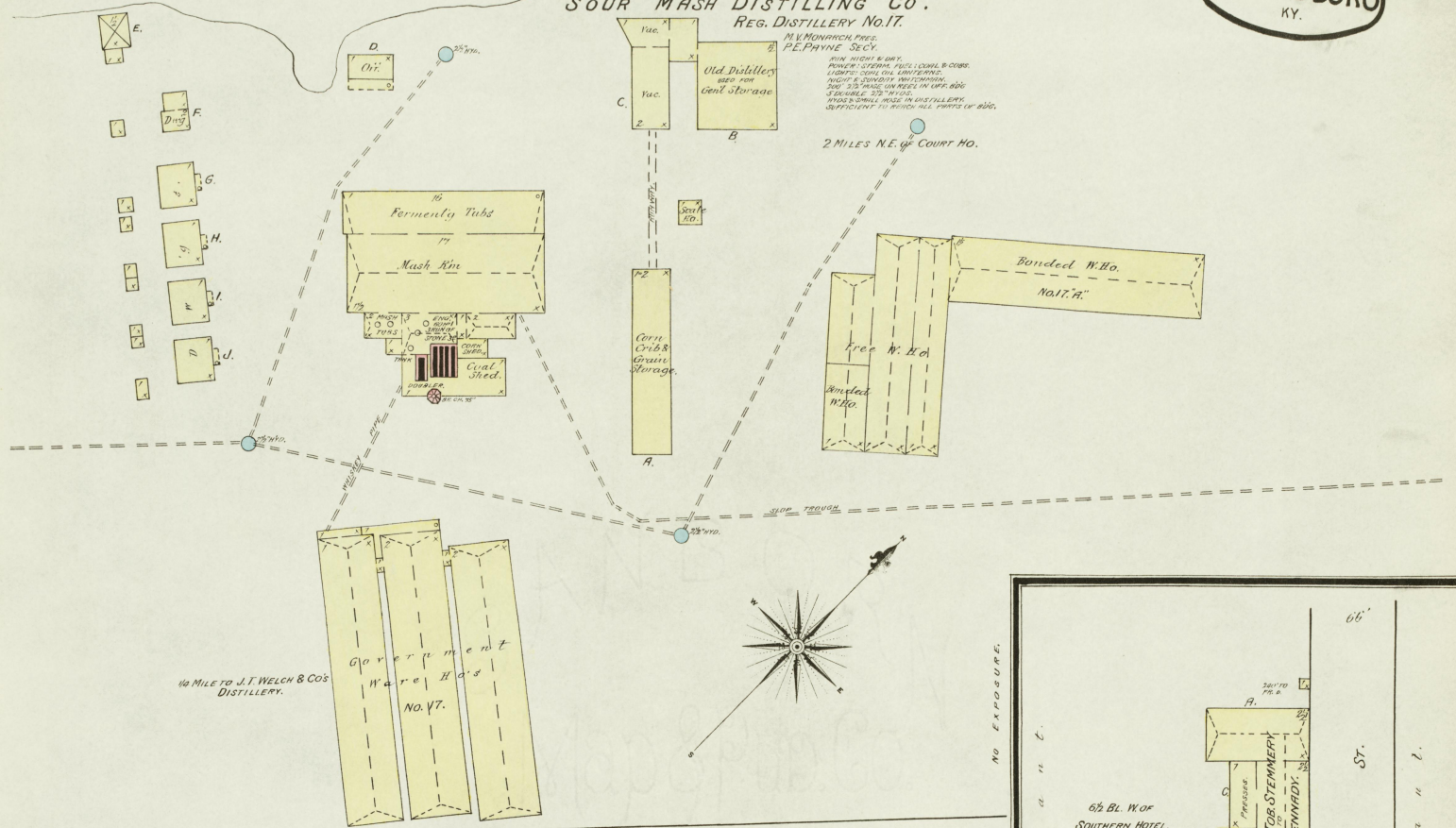
Ohio River.

No Exposure.

SOUR MASH DISTILLING CO.
REG. DISTILLERY NO. 17.
P. PAYNE SECK.

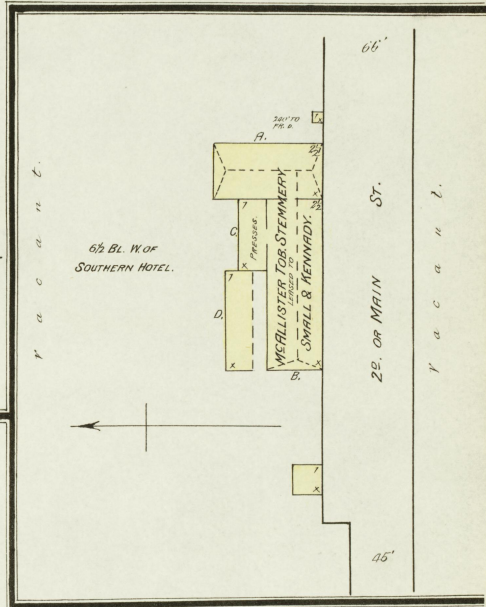
RAIN NIGHT & DAY.
PUMPS SYSTEM FULL; COAL & OILS
LIGHTS; COAL OIL LIGHTS;
NIGHT & CONDUIT UNDERGROUND.
200' IS MADE ON REEL IN OFF. BLDG.
FURNISHED 250' WIND.
WIND & SMALL WIND IN DISTILLERY.
DEPARTMENTS TO BE BUILT ON S. SIDE OF BLDG.

2 MILES N.E. OF COURT HO.

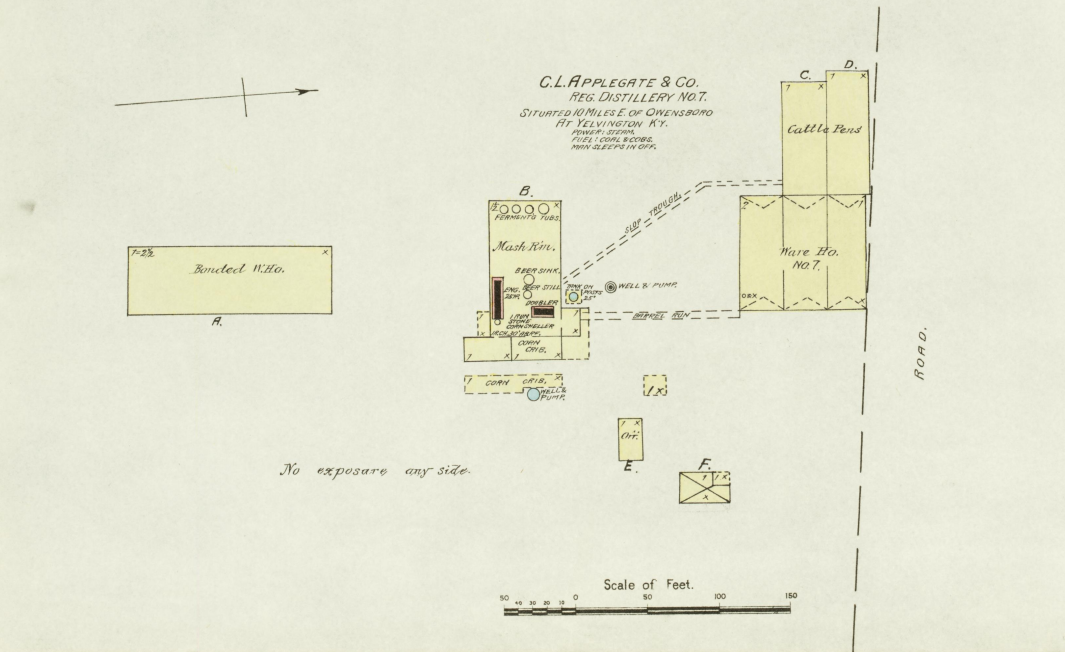


COUNTRY ROAD.

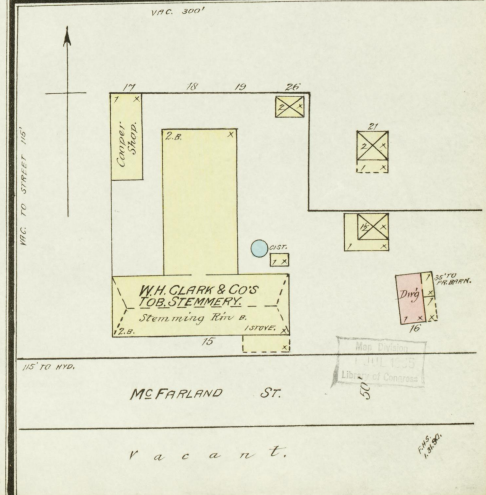
V a c a n t.



C.L. APPLIGATE & CO.
REG. DISTILLERY NO. 7.
SITUATED 10 MILES E. OF OWENSBORO
AT YELVINGTON KY.
PUMPS SYSTEM
FULL COAL & OILS
WIND MILL IN OFF.



Scale of Feet.



McFarland St.

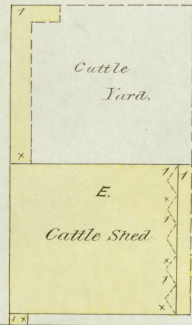
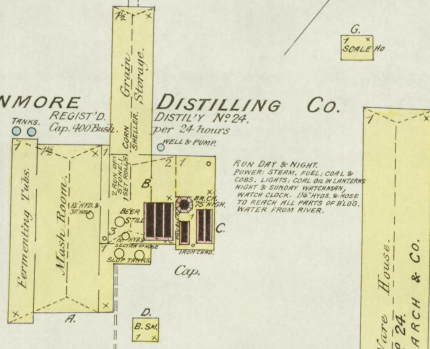
V a c a n t.

JAN. 1890
OWENSBORO
KY.

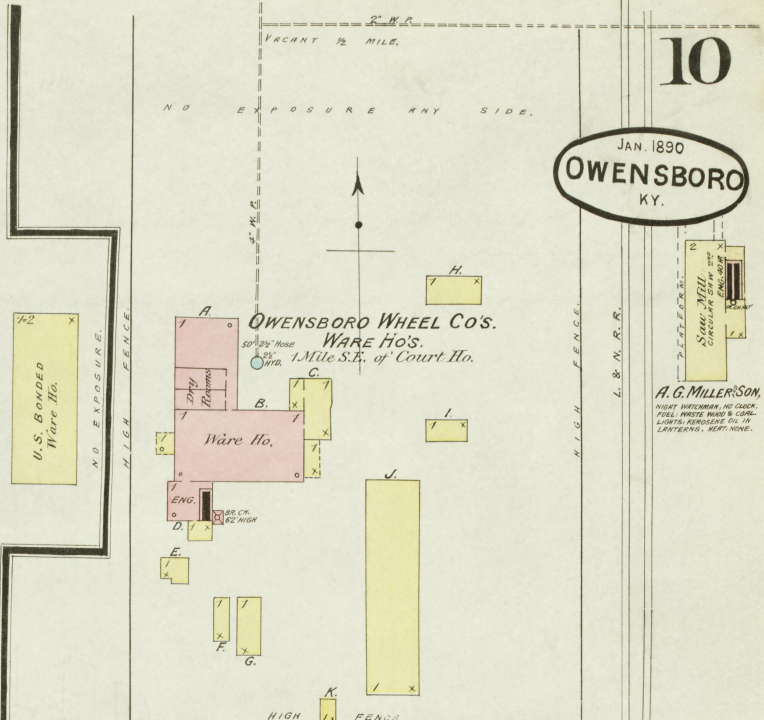
Ohio River beyond.
STEEP BANK. STEEP BANK.

1/4 Miles N.E. of Court House

GLENMORE DISTILLING CO.
REGIST'D DISTILLY NO. 24.
Cap. 400 Bushels.
over 24 hours



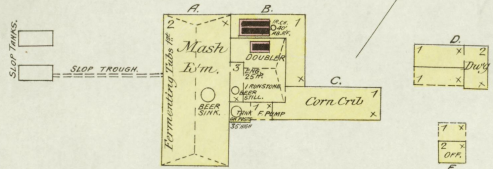
Cattle Yards.



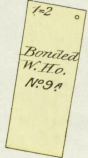
OWENSBORO WHEEL CO'S WARE Hs.
1 Mile S.E. of Court Ho.

A. G. MILLERSON,
NIGHT WATCHMAN, NO CLOCK,
FUEL, WHITE WASH & COND.
LIQUOR, REPLENISH'D IN
LANTERNS, KEPT NONE.

NO EXPOSURE.
1/4 Miles W. of Court Ho.

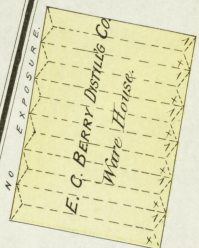
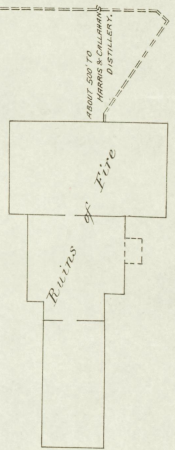


M. P. MATTINGLY & CO.
"DAVIES' CO. CLUB WHISKEY."
REG. DISTILLY NO. 3.



1/4 Miles W. of Court Ho. at Owensboro.

Hog Yard.
FORMERLY
E. C. BERRY DISTILLING CO.
REG. DISTILLY NO. 33.

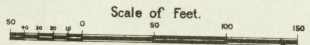


Hog & Cattle Yard.

COUNTRY ROAD.

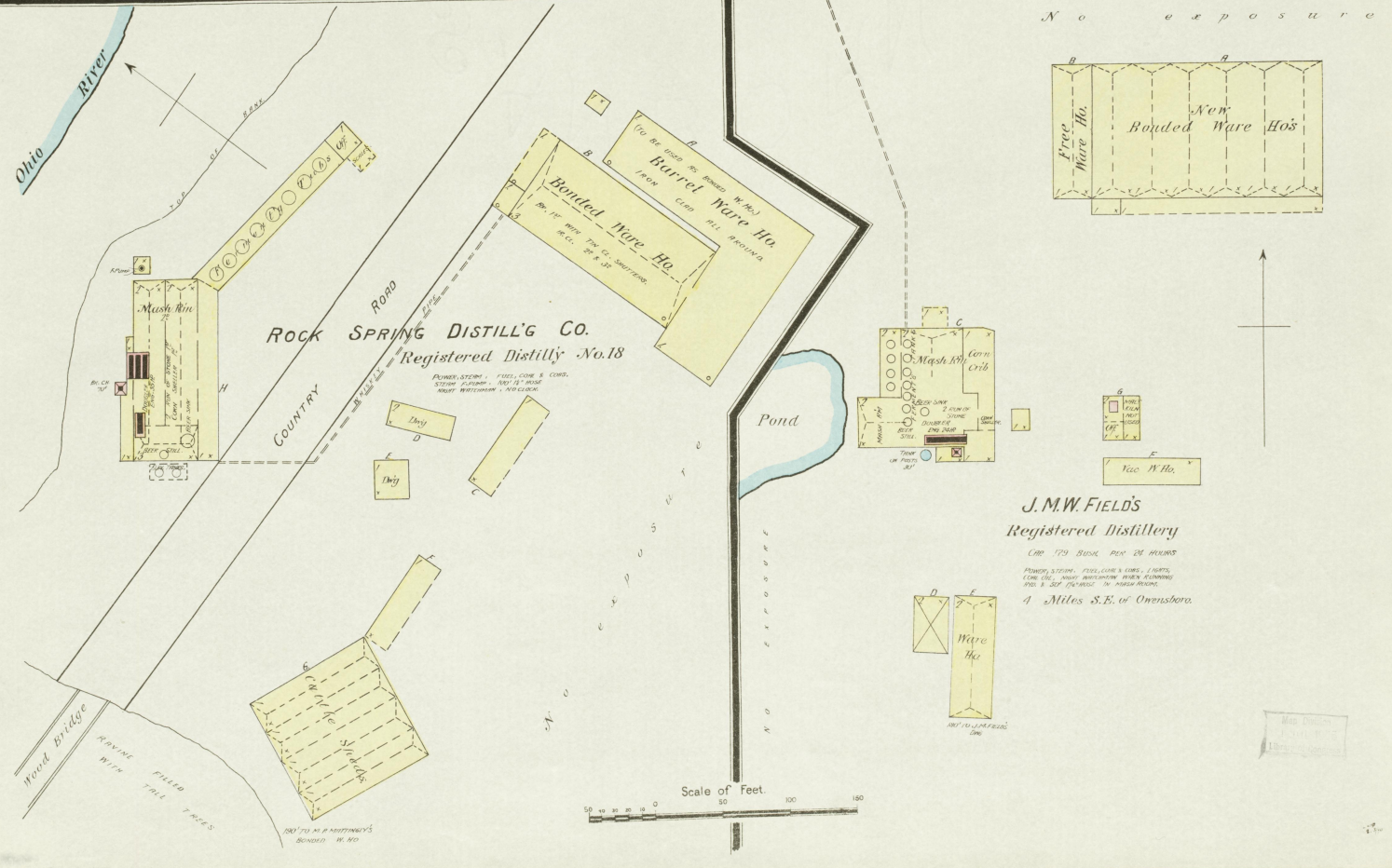
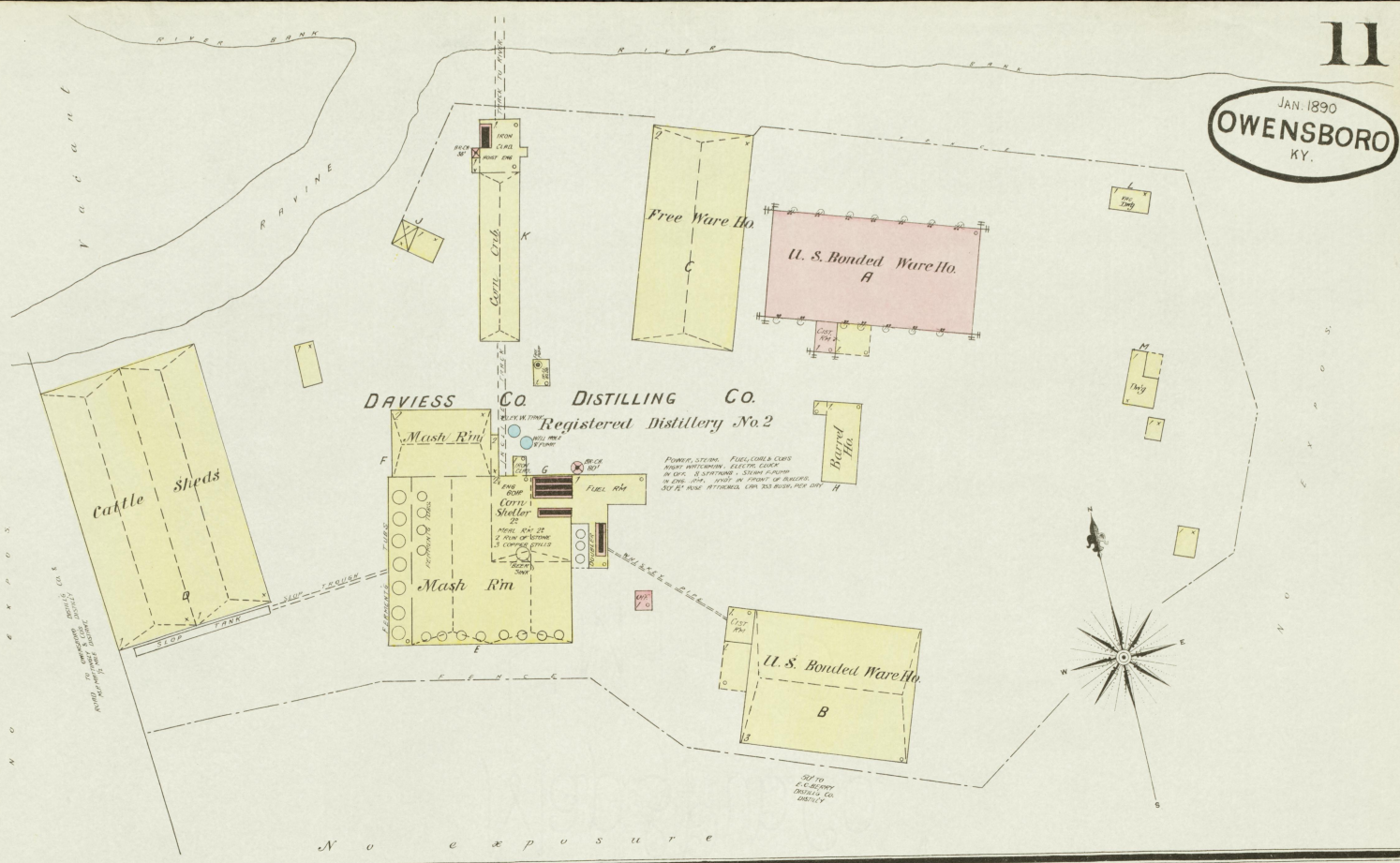
ROAD.

Ravine full of Tall Trees.

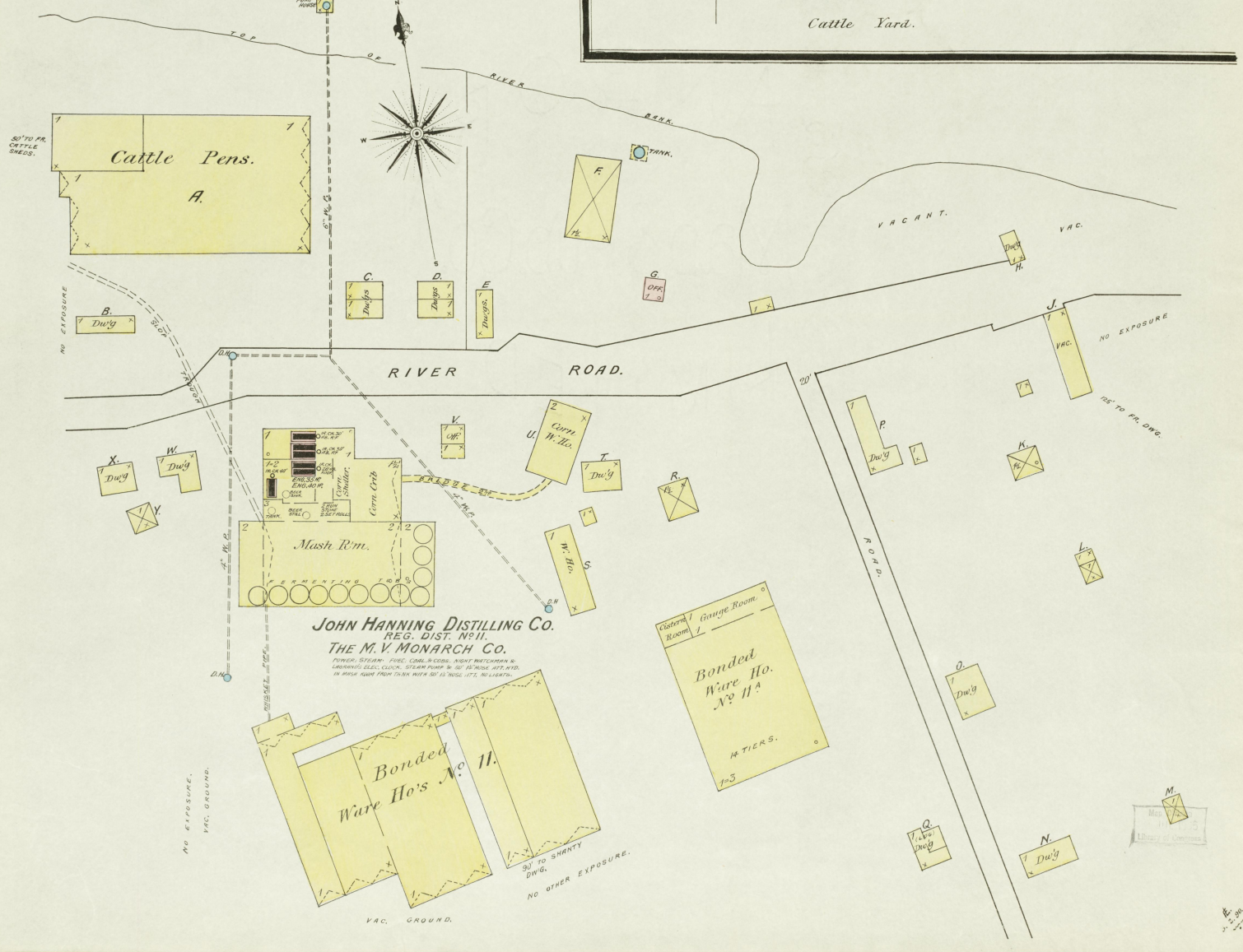
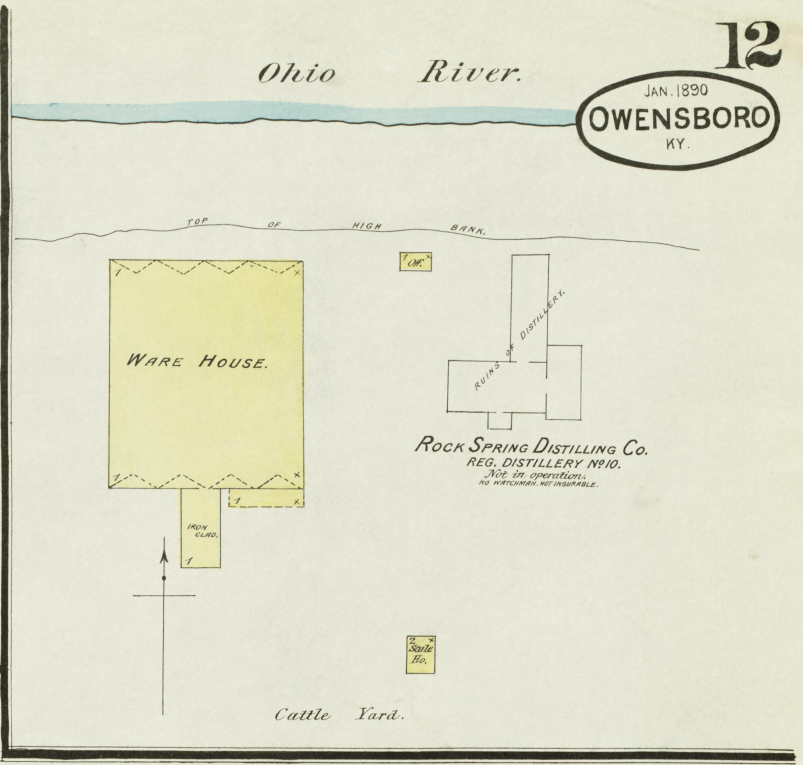
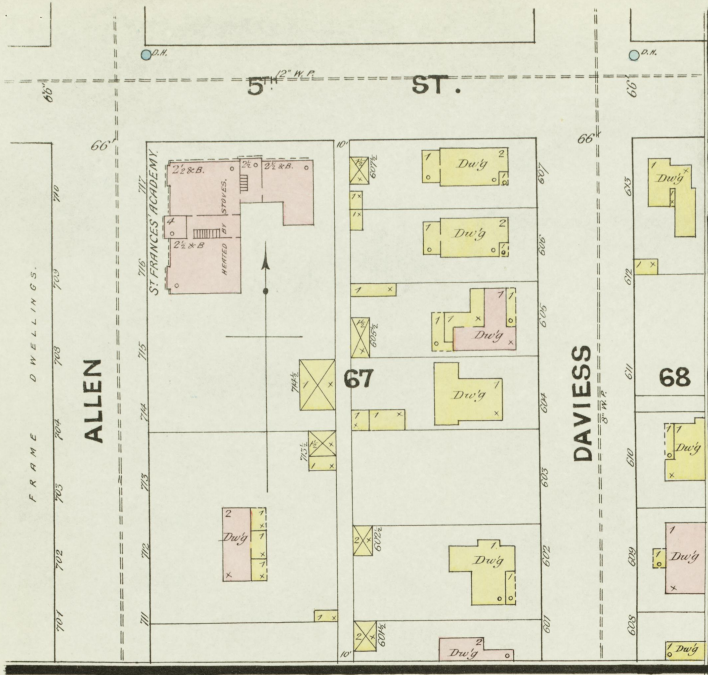


NO EXPOSURE. NO EXPOSURE

JAN. 1890
OWENSBORO
KY.

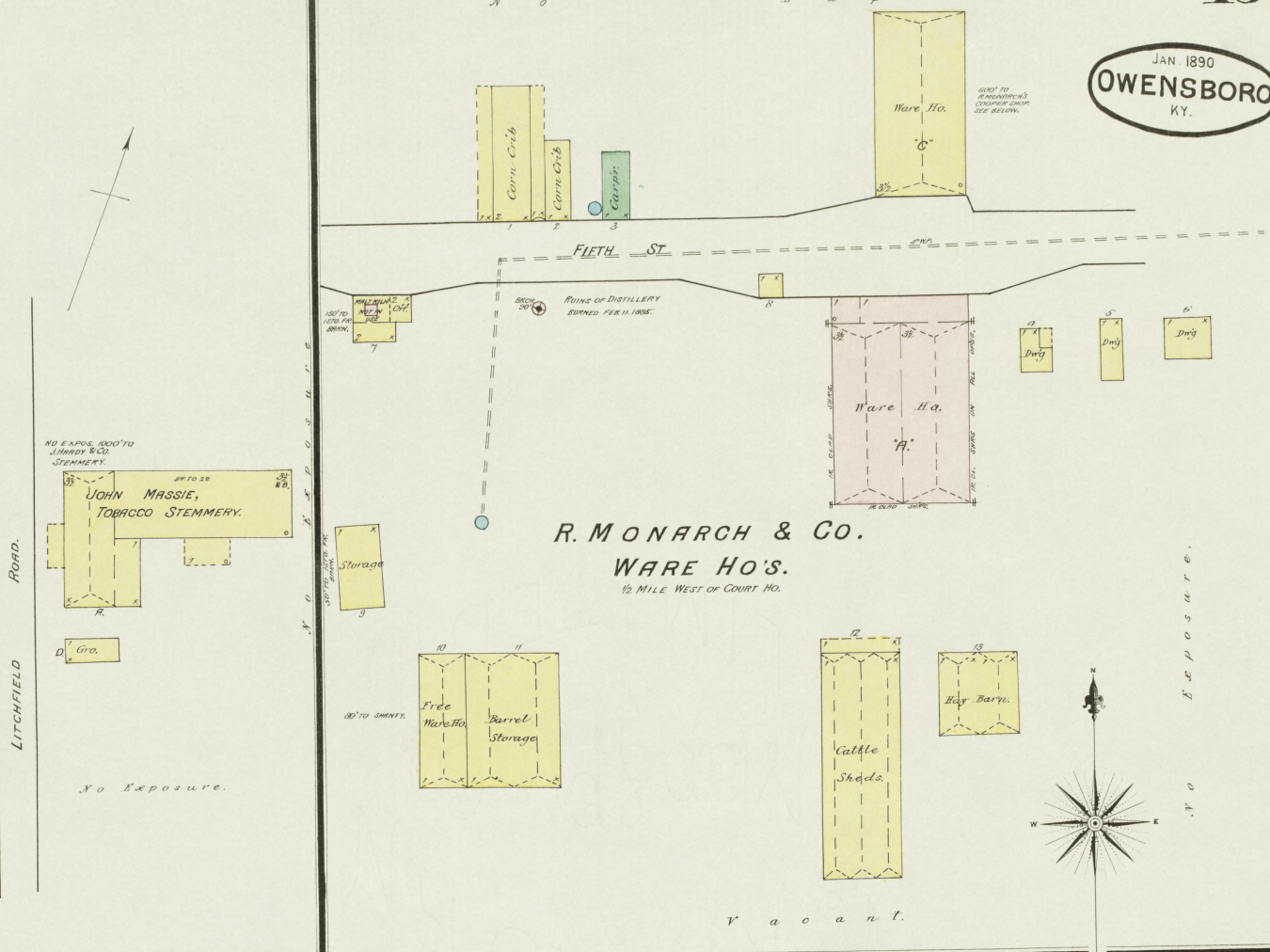


Ohio River.



JAN 1890
OWENSBORO
KY.

N o E x p o s u r e

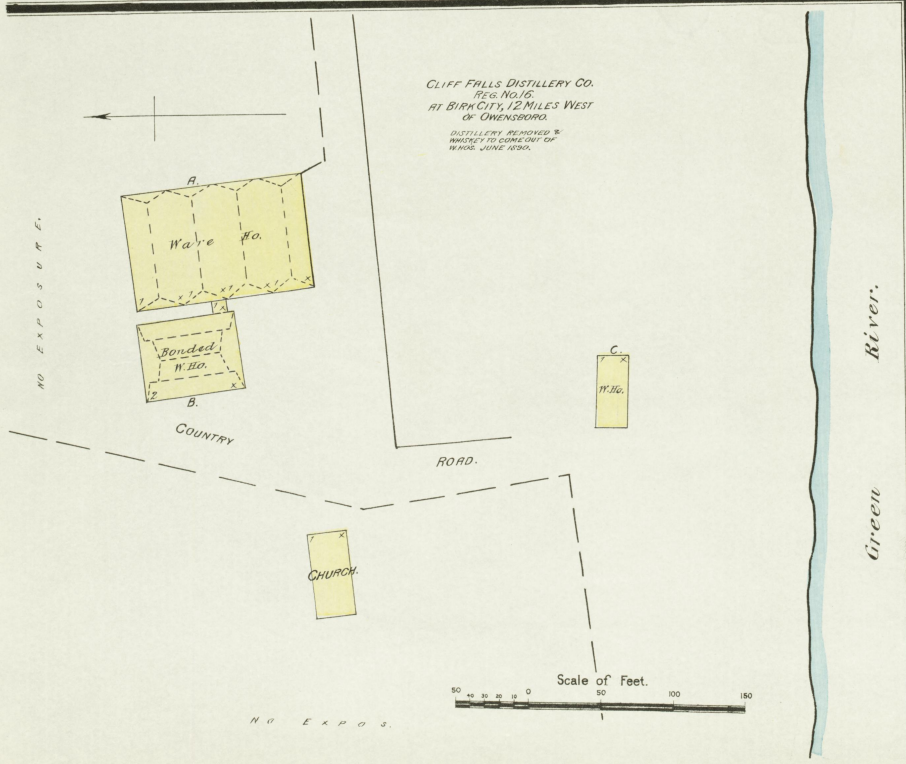


R. MONARCH & CO.
WARE HO'S.
1/2 MILE WEST OF COURT HO.

V a c a n t.

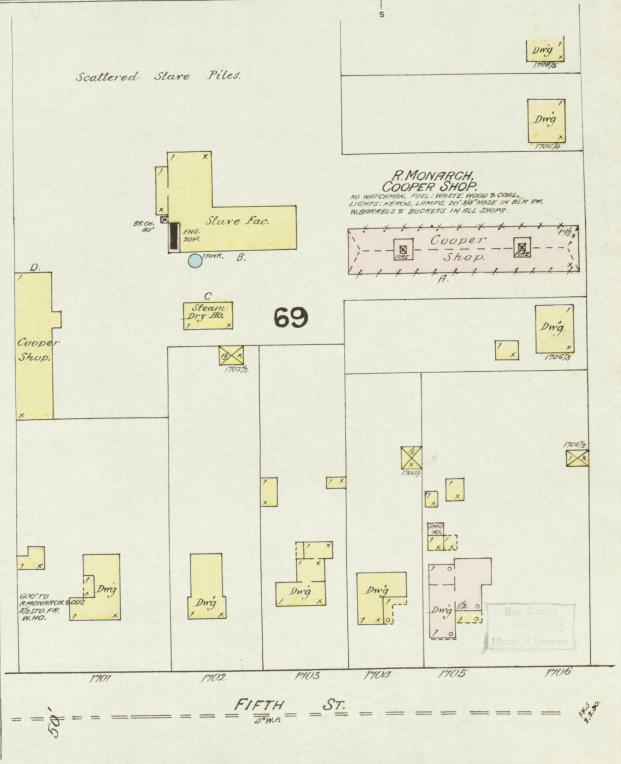
CLIFF FALLS DISTILLERY CO.
REG. NO. 15
AT BIRYCOTT, 12 MILES WEST
OF OWENSBORO.

DISTILLERY REMOVED &
WHISKEY TO CONSEQUENT OF
WARS. (SEE REG.)



Scale of Feet.
0 50 100 150

Green River.



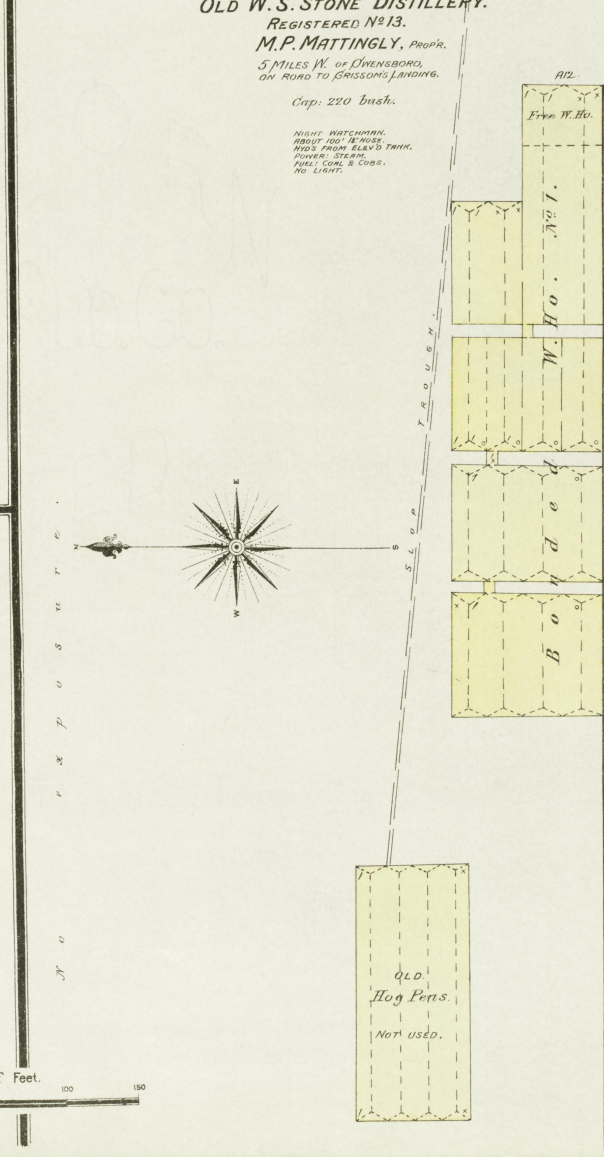
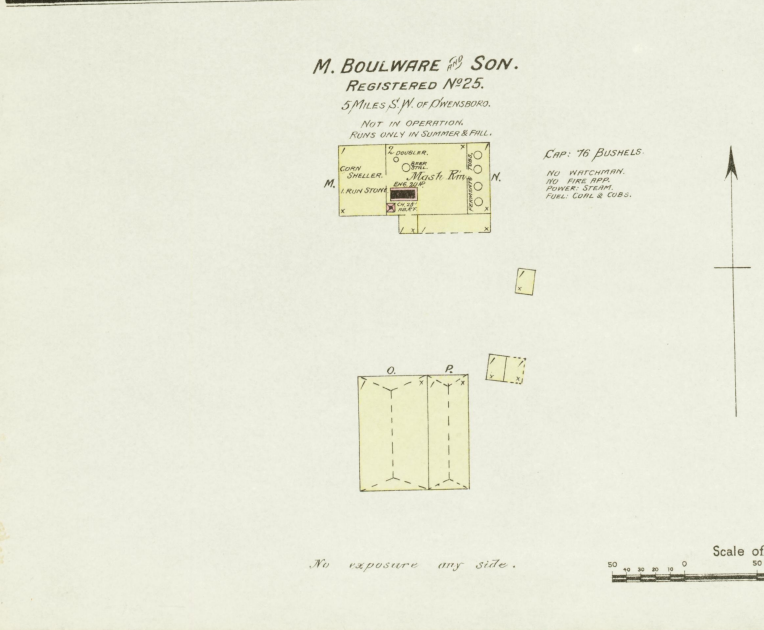
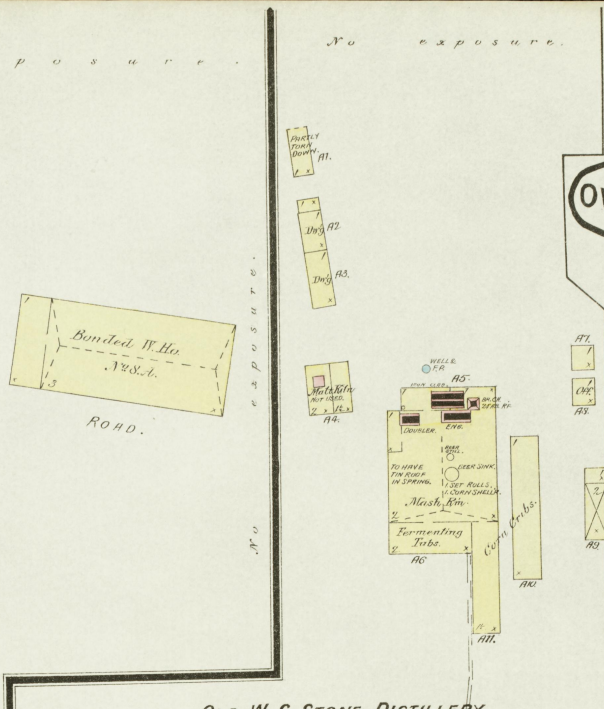
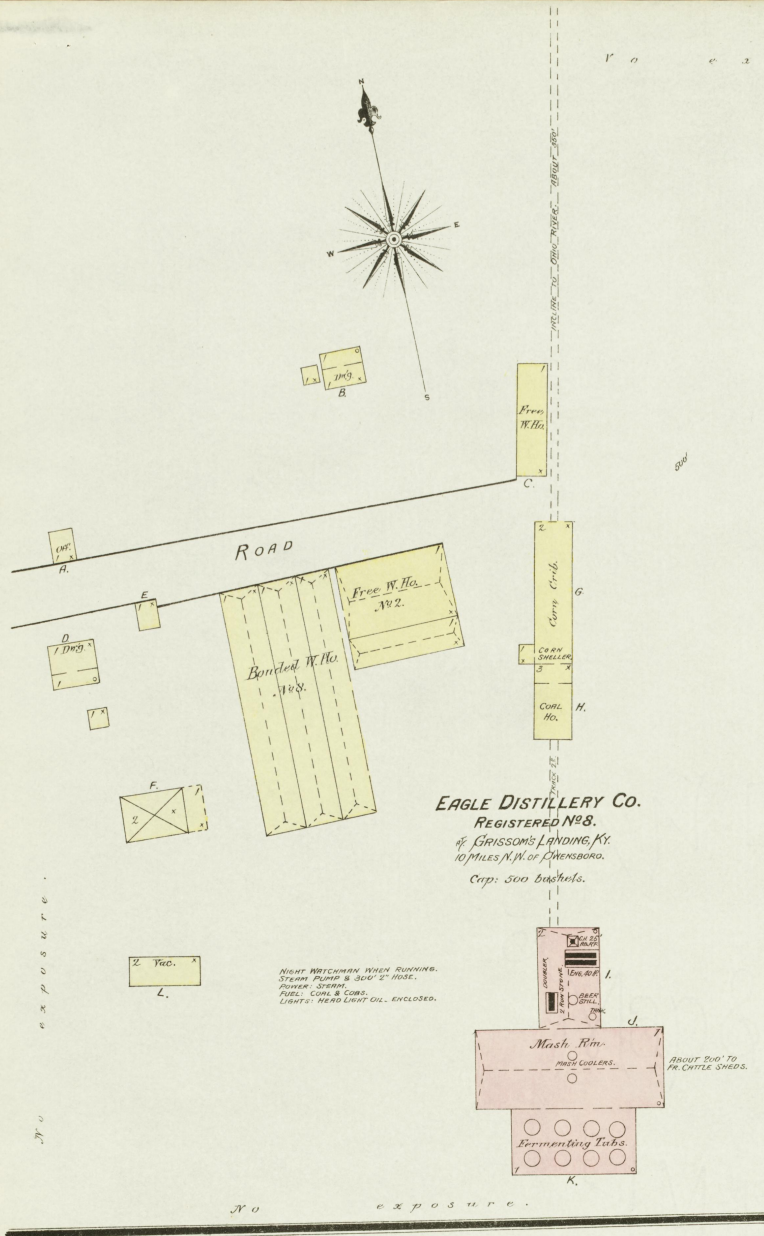
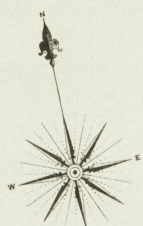
R. MONARCH
COOPER SHOP
NO WORKING. FULL STOCK. BOTTLED & COILED.
LINDSAY: FEDERAL LICENSE. ONY. SUFFICIENT IN ALL WMS.
BUSINESS & BUSINESS IN ALL SHOPS.

69

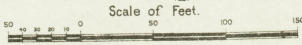
FIFTH ST.

JAN. 1890
OWENSBORO
KY.

No exposure.

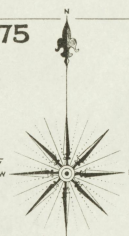
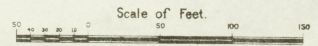
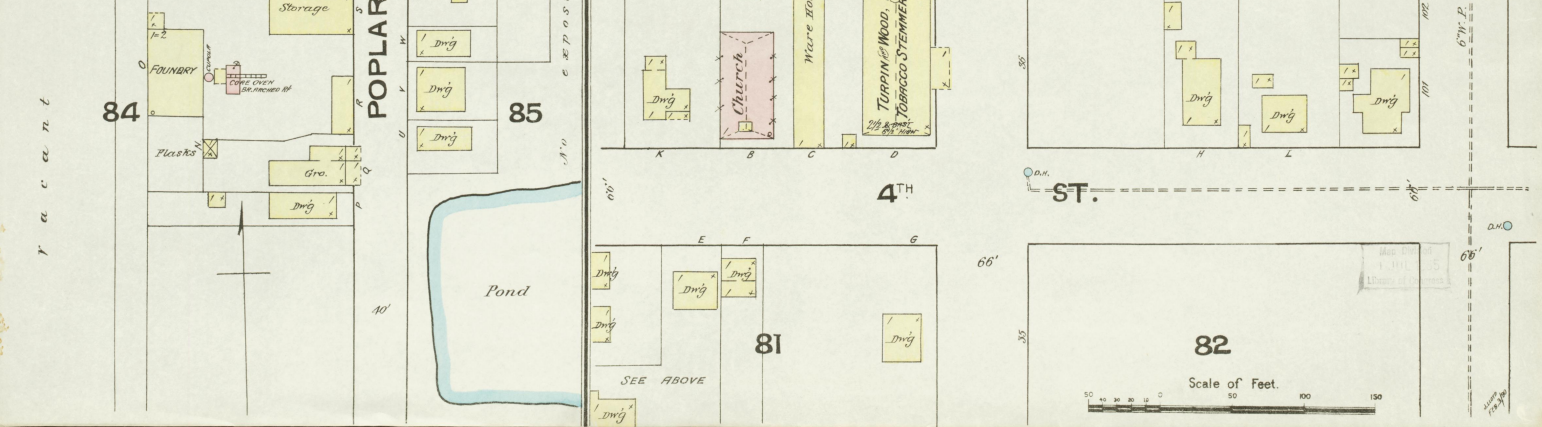
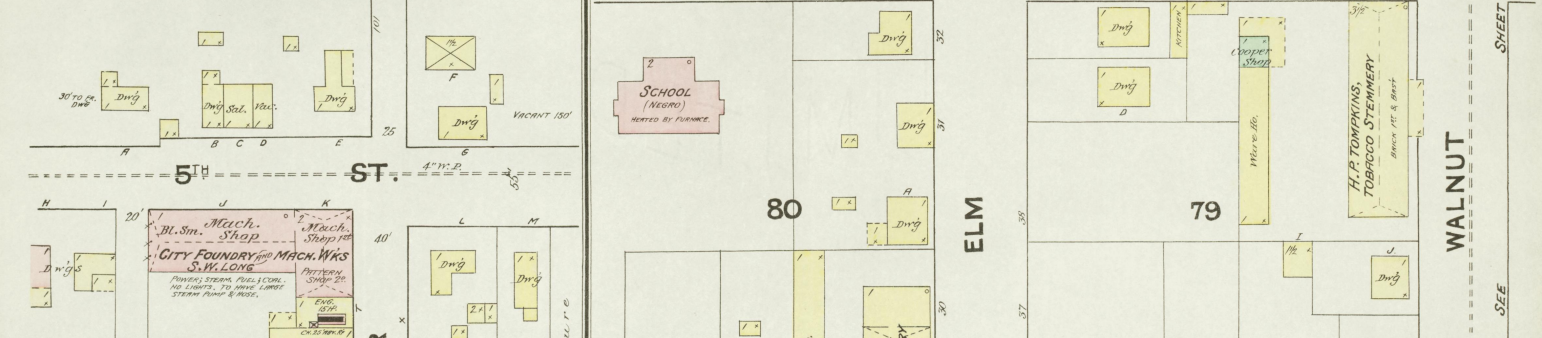
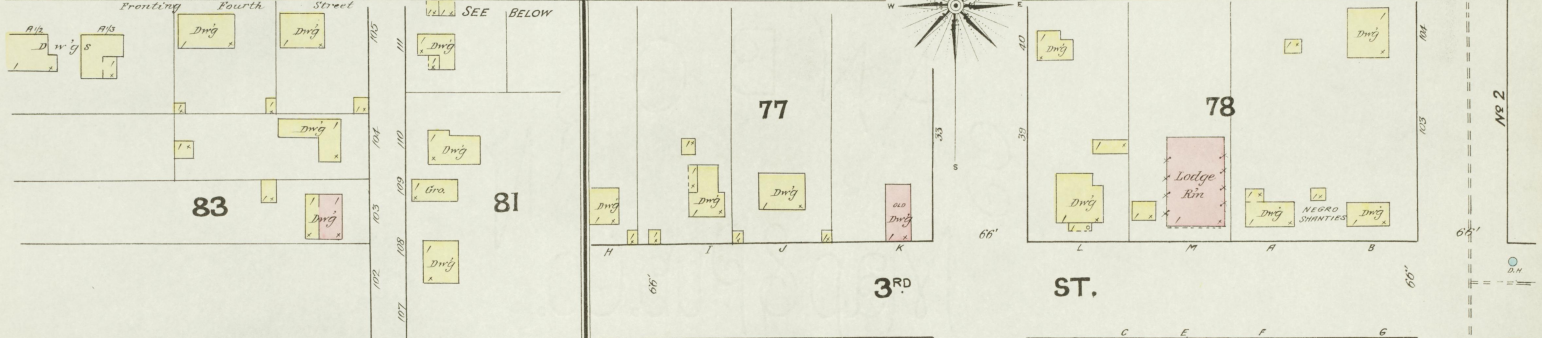
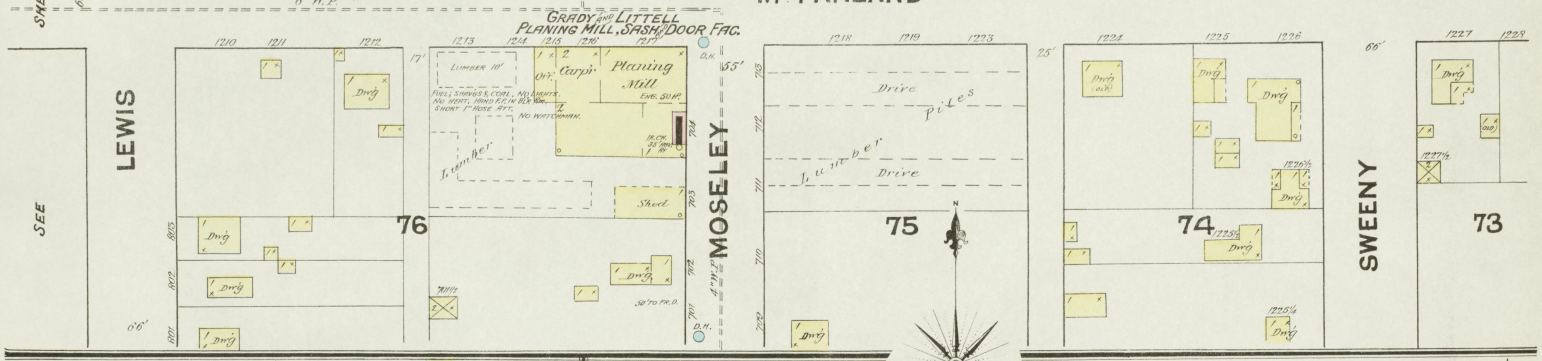
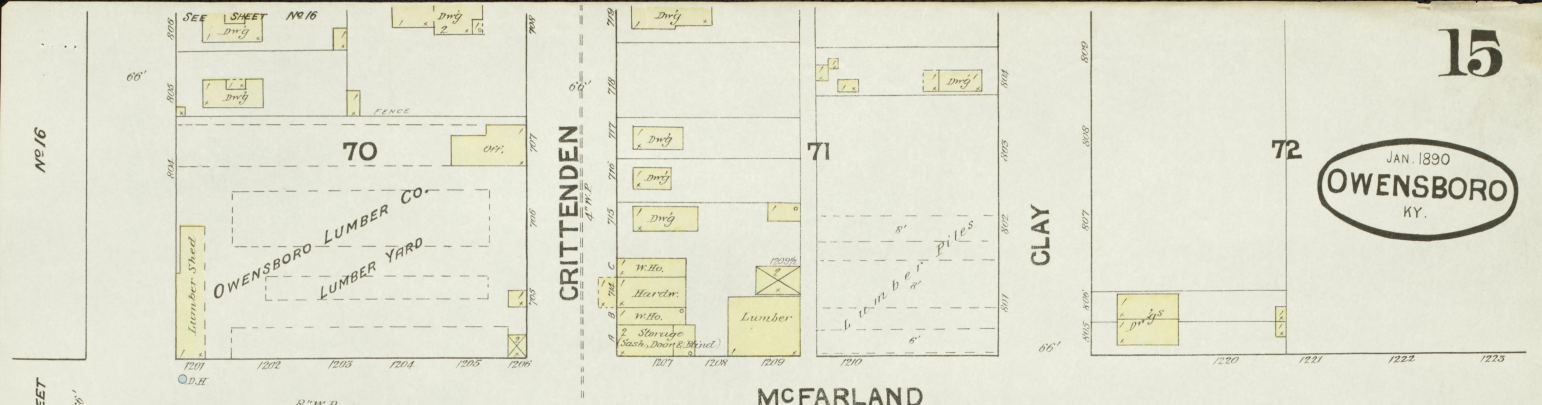


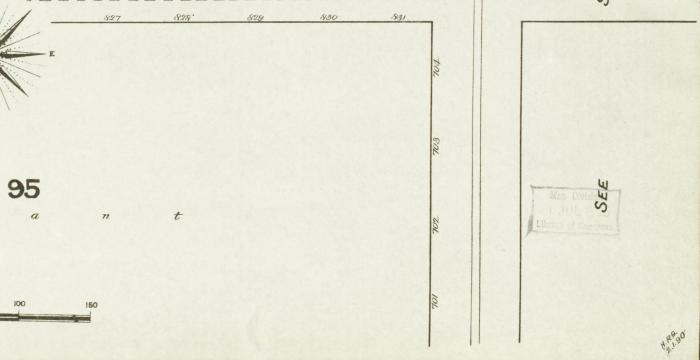
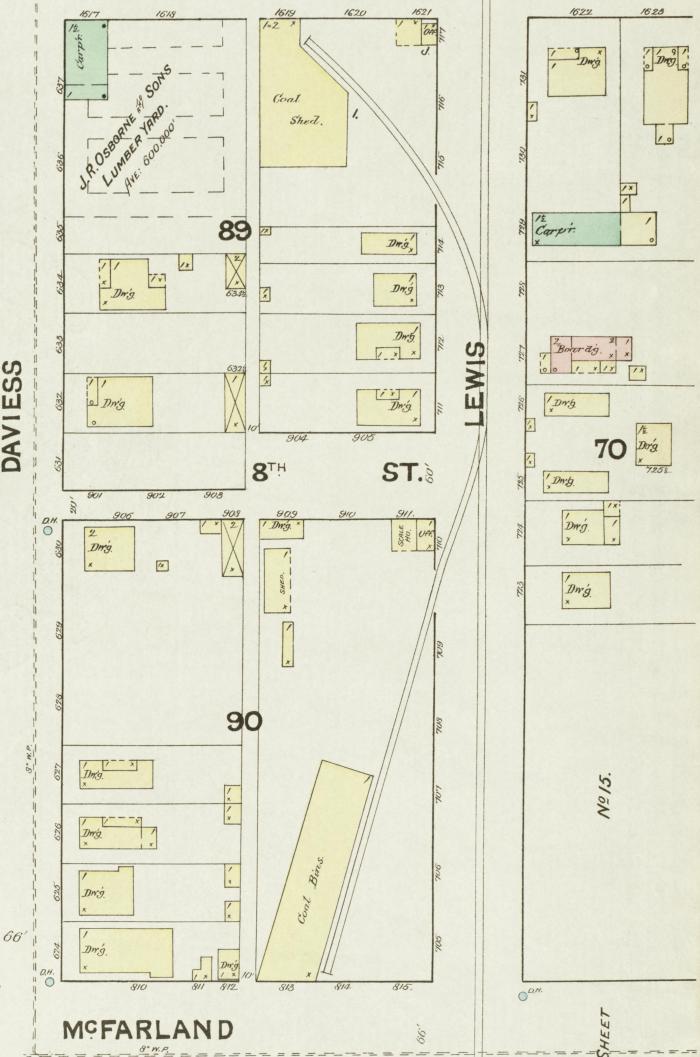
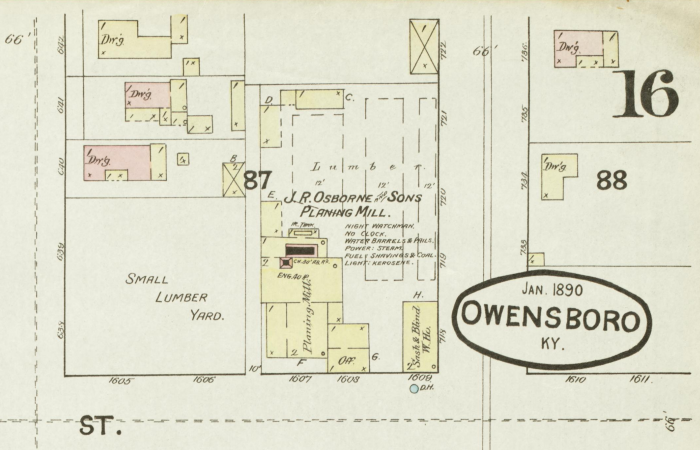
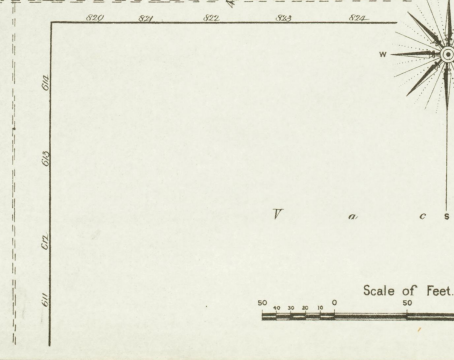
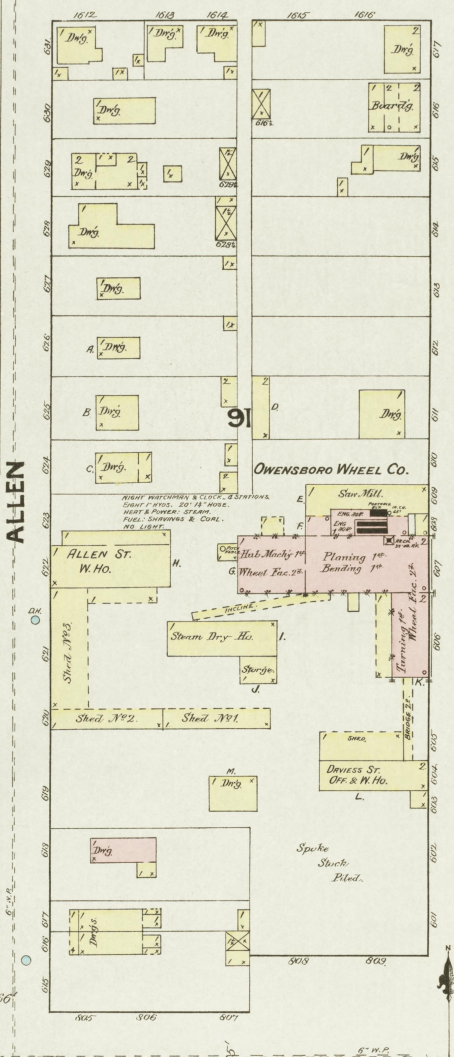
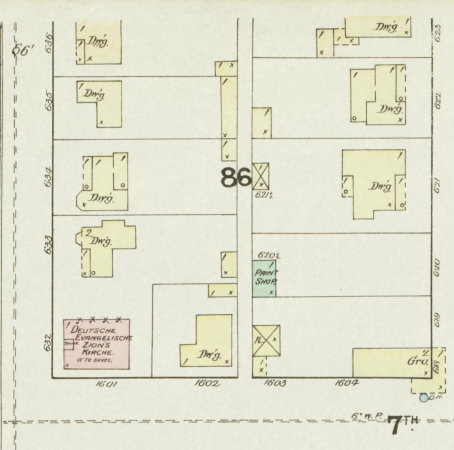
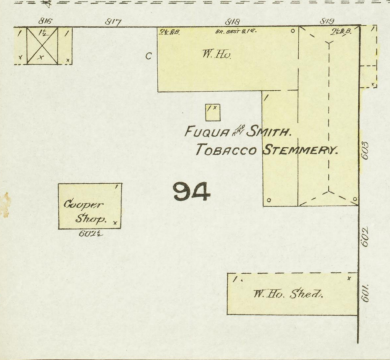
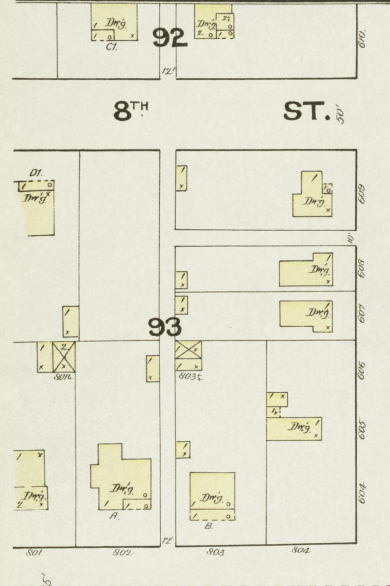
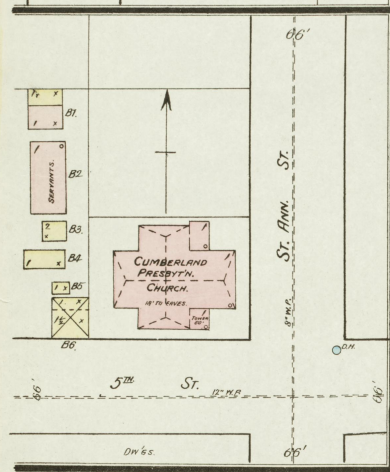
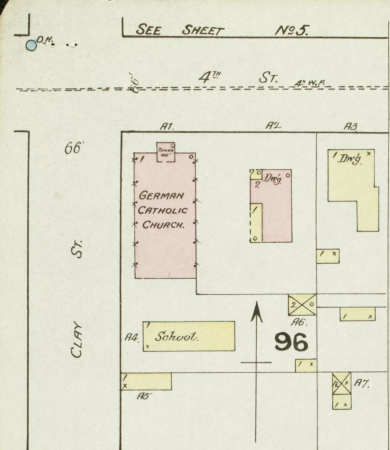
ROAD TO GRISSELLS LANDING.



Map Division
JAN. 1890
11 Pages of Descriptions

418
1890





JAN. 1890
OWENSBORO
KY.

16

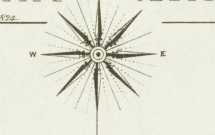
88

70

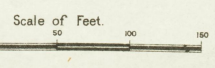
NO. 15.

SHEET

SEE



T a c s a n t



8 1/2 x 11