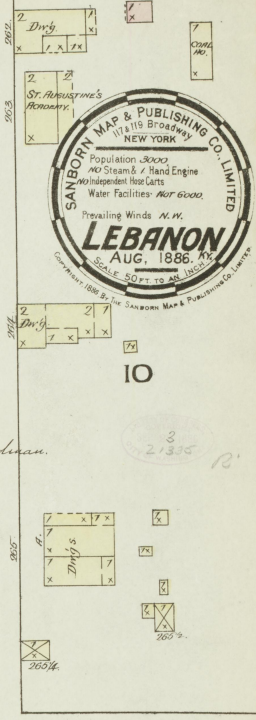
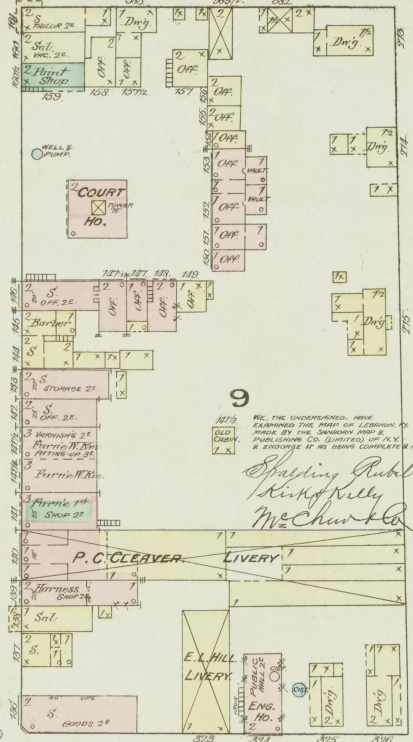
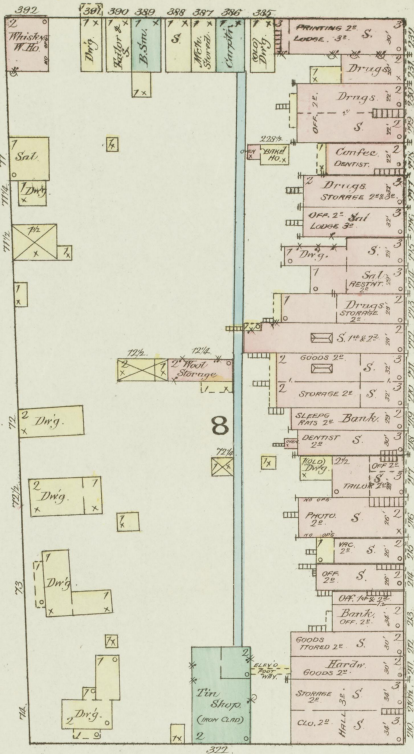


7,335

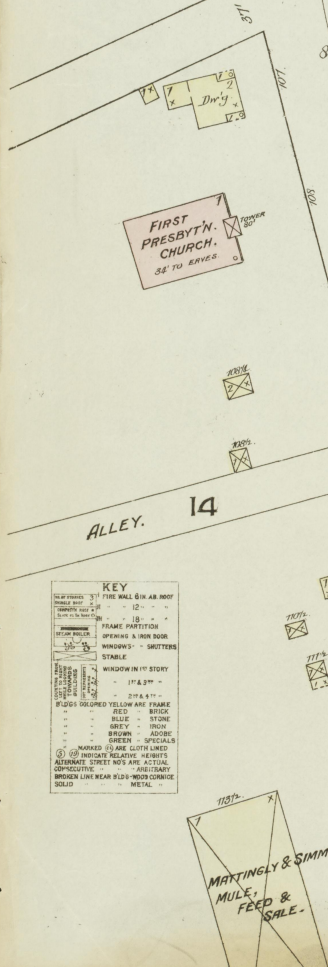
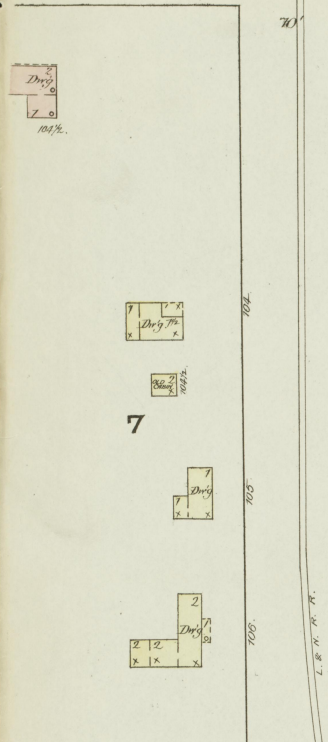
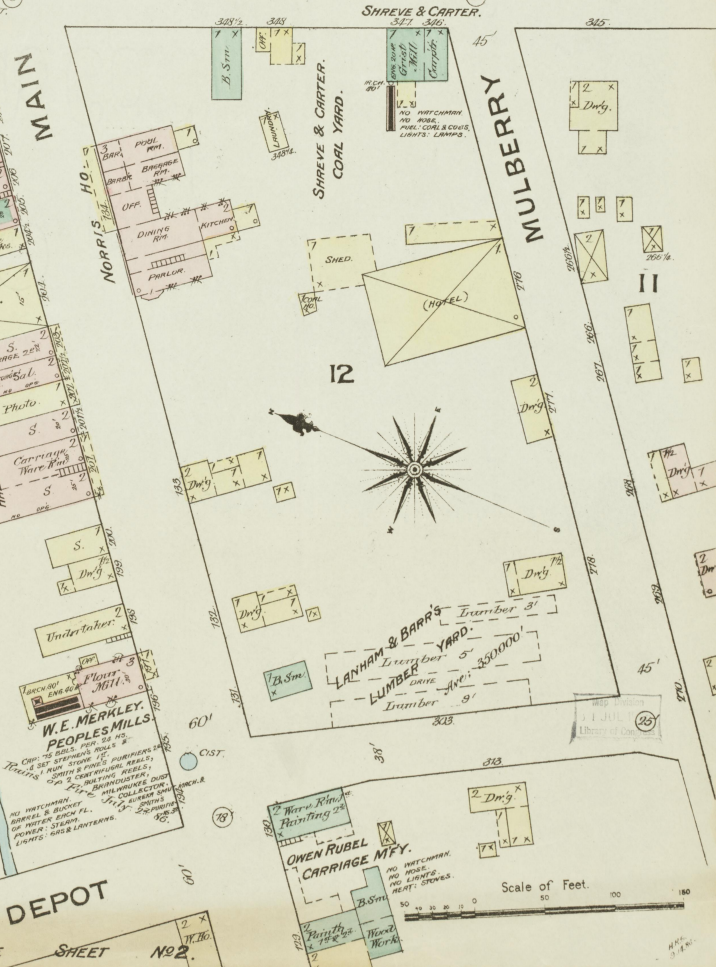
REPUBLICAN



WE, THE UNDERSIGNED, HAVE EXAMINED THE ABOVE MAP OF LEBANON MADE BY THE SANBORN MAP & PUBLISHING CO. LIMITED, OF NEW YORK, AND ENDORSE IT AS BEING COMPLETELY ACCURATE.

*Shubling Rebel Rodman,
Kinky Kelly,
McChew & Co.*

MARKET



KEY

- NO. 1 - FIRE WALL IN AIR ROOF
- NO. 2 - BRICK
- NO. 3 - FRAME PARTITION
- NO. 4 - OPENING & HORN DOOR
- NO. 5 - WINDOWS - SHUTTERS
- NO. 6 - STABLE
- NO. 7 - WINDOW IN AIR ROOF
- NO. 8 - 17 1/2 FT.
- NO. 9 - 20 1/2 FT.
- NO. 10 - 25 1/2 FT.
- NO. 11 - 30 FT.
- NO. 12 - 35 FT.
- NO. 13 - 40 FT.
- NO. 14 - 45 FT.
- NO. 15 - 50 FT.
- NO. 16 - 55 FT.
- NO. 17 - 60 FT.
- NO. 18 - 65 FT.
- NO. 19 - 70 FT.
- NO. 20 - 75 FT.
- NO. 21 - 80 FT.
- NO. 22 - 85 FT.
- NO. 23 - 90 FT.
- NO. 24 - 95 FT.
- NO. 25 - 100 FT.
- NO. 26 - 105 FT.
- NO. 27 - 110 FT.
- NO. 28 - 115 FT.
- NO. 29 - 120 FT.
- NO. 30 - 125 FT.
- NO. 31 - 130 FT.
- NO. 32 - 135 FT.
- NO. 33 - 140 FT.
- NO. 34 - 145 FT.
- NO. 35 - 150 FT.
- NO. 36 - 155 FT.
- NO. 37 - 160 FT.
- NO. 38 - 165 FT.
- NO. 39 - 170 FT.
- NO. 40 - 175 FT.
- NO. 41 - 180 FT.
- NO. 42 - 185 FT.
- NO. 43 - 190 FT.
- NO. 44 - 195 FT.
- NO. 45 - 200 FT.
- NO. 46 - 205 FT.
- NO. 47 - 210 FT.
- NO. 48 - 215 FT.
- NO. 49 - 220 FT.
- NO. 50 - 225 FT.
- NO. 51 - 230 FT.
- NO. 52 - 235 FT.
- NO. 53 - 240 FT.
- NO. 54 - 245 FT.
- NO. 55 - 250 FT.
- NO. 56 - 255 FT.
- NO. 57 - 260 FT.
- NO. 58 - 265 FT.
- NO. 59 - 270 FT.
- NO. 60 - 275 FT.
- NO. 61 - 280 FT.
- NO. 62 - 285 FT.
- NO. 63 - 290 FT.
- NO. 64 - 295 FT.
- NO. 65 - 300 FT.
- NO. 66 - 305 FT.
- NO. 67 - 310 FT.
- NO. 68 - 315 FT.
- NO. 69 - 320 FT.
- NO. 70 - 325 FT.
- NO. 71 - 330 FT.
- NO. 72 - 335 FT.
- NO. 73 - 340 FT.
- NO. 74 - 345 FT.
- NO. 75 - 350 FT.
- NO. 76 - 355 FT.
- NO. 77 - 360 FT.
- NO. 78 - 365 FT.
- NO. 79 - 370 FT.
- NO. 80 - 375 FT.
- NO. 81 - 380 FT.
- NO. 82 - 385 FT.
- NO. 83 - 390 FT.
- NO. 84 - 395 FT.
- NO. 85 - 400 FT.
- NO. 86 - 405 FT.
- NO. 87 - 410 FT.
- NO. 88 - 415 FT.
- NO. 89 - 420 FT.
- NO. 90 - 425 FT.
- NO. 91 - 430 FT.
- NO. 92 - 435 FT.
- NO. 93 - 440 FT.
- NO. 94 - 445 FT.
- NO. 95 - 450 FT.
- NO. 96 - 455 FT.
- NO. 97 - 460 FT.
- NO. 98 - 465 FT.
- NO. 99 - 470 FT.
- NO. 100 - 475 FT.
- NO. 101 - 480 FT.
- NO. 102 - 485 FT.
- NO. 103 - 490 FT.
- NO. 104 - 495 FT.
- NO. 105 - 500 FT.
- NO. 106 - 505 FT.
- NO. 107 - 510 FT.
- NO. 108 - 515 FT.
- NO. 109 - 520 FT.
- NO. 110 - 525 FT.
- NO. 111 - 530 FT.
- NO. 112 - 535 FT.
- NO. 113 - 540 FT.
- NO. 114 - 545 FT.
- NO. 115 - 550 FT.
- NO. 116 - 555 FT.
- NO. 117 - 560 FT.
- NO. 118 - 565 FT.
- NO. 119 - 570 FT.
- NO. 120 - 575 FT.
- NO. 121 - 580 FT.
- NO. 122 - 585 FT.
- NO. 123 - 590 FT.
- NO. 124 - 595 FT.
- NO. 125 - 600 FT.
- NO. 126 - 605 FT.
- NO. 127 - 610 FT.
- NO. 128 - 615 FT.
- NO. 129 - 620 FT.
- NO. 130 - 625 FT.
- NO. 131 - 630 FT.
- NO. 132 - 635 FT.
- NO. 133 - 640 FT.
- NO. 134 - 645 FT.
- NO. 135 - 650 FT.
- NO. 136 - 655 FT.
- NO. 137 - 660 FT.
- NO. 138 - 665 FT.
- NO. 139 - 670 FT.
- NO. 140 - 675 FT.
- NO. 141 - 680 FT.
- NO. 142 - 685 FT.
- NO. 143 - 690 FT.
- NO. 144 - 695 FT.
- NO. 145 - 700 FT.
- NO. 146 - 705 FT.
- NO. 147 - 710 FT.
- NO. 148 - 715 FT.
- NO. 149 - 720 FT.
- NO. 150 - 725 FT.
- NO. 151 - 730 FT.
- NO. 152 - 735 FT.
- NO. 153 - 740 FT.
- NO. 154 - 745 FT.
- NO. 155 - 750 FT.
- NO. 156 - 755 FT.
- NO. 157 - 760 FT.
- NO. 158 - 765 FT.
- NO. 159 - 770 FT.
- NO. 160 - 775 FT.
- NO. 161 - 780 FT.
- NO. 162 - 785 FT.
- NO. 163 - 790 FT.
- NO. 164 - 795 FT.
- NO. 165 - 800 FT.
- NO. 166 - 805 FT.
- NO. 167 - 810 FT.
- NO. 168 - 815 FT.
- NO. 169 - 820 FT.
- NO. 170 - 825 FT.
- NO. 171 - 830 FT.
- NO. 172 - 835 FT.
- NO. 173 - 840 FT.
- NO. 174 - 845 FT.
- NO. 175 - 850 FT.
- NO. 176 - 855 FT.
- NO. 177 - 860 FT.
- NO. 178 - 865 FT.
- NO. 179 - 870 FT.
- NO. 180 - 875 FT.
- NO. 181 - 880 FT.
- NO. 182 - 885 FT.
- NO. 183 - 890 FT.
- NO. 184 - 895 FT.
- NO. 185 - 900 FT.
- NO. 186 - 905 FT.
- NO. 187 - 910 FT.
- NO. 188 - 915 FT.
- NO. 189 - 920 FT.
- NO. 190 - 925 FT.
- NO. 191 - 930 FT.
- NO. 192 - 935 FT.
- NO. 193 - 940 FT.
- NO. 194 - 945 FT.
- NO. 195 - 950 FT.
- NO. 196 - 955 FT.
- NO. 197 - 960 FT.
- NO. 198 - 965 FT.
- NO. 199 - 970 FT.
- NO. 200 - 975 FT.
- NO. 201 - 980 FT.
- NO. 202 - 985 FT.
- NO. 203 - 990 FT.
- NO. 204 - 995 FT.
- NO. 205 - 1000 FT.

Scale of Feet. 100

SEE SHEET NO. 2.

A. OFFUTT PLANING MILL
 1st PLANER & MATCHER, PLANING, RIP SAW, FEED SAW, SANDER, PILE SAW, TOP SAW, CUT OFF, PORTABLE SAWYER, SAWYER, PORTABLE SAW, SAW, BELTWORK ON 2nd FLOOR.
 2nd 1st FLOOR, NO. 10000, NO. 1000, NO. 100, NO. 10.
 3rd FLOOR, NO. 1000, NO. 100, NO. 10.
 4th FLOOR, NO. 1000, NO. 100, NO. 10.
 5th FLOOR, NO. 1000, NO. 100, NO. 10.
 6th FLOOR, NO. 1000, NO. 100, NO. 10.
 7th FLOOR, NO. 1000, NO. 100, NO. 10.
 8th FLOOR, NO. 1000, NO. 100, NO. 10.
 9th FLOOR, NO. 1000, NO. 100, NO. 10.
 10th FLOOR, NO. 1000, NO. 100, NO. 10.
 11th FLOOR, NO. 1000, NO. 100, NO. 10.
 12th FLOOR, NO. 1000, NO. 100, NO. 10.
 13th FLOOR, NO. 1000, NO. 100, NO. 10.
 14th FLOOR, NO. 1000, NO. 100, NO. 10.
 15th FLOOR, NO. 1000, NO. 100, NO. 10.
 16th FLOOR, NO. 1000, NO. 100, NO. 10.
 17th FLOOR, NO. 1000, NO. 100, NO. 10.
 18th FLOOR, NO. 1000, NO. 100, NO. 10.
 19th FLOOR, NO. 1000, NO. 100, NO. 10.
 20th FLOOR, NO. 1000, NO. 100, NO. 10.
 21st FLOOR, NO. 1000, NO. 100, NO. 10.
 22nd FLOOR, NO. 1000, NO. 100, NO. 10.
 23rd FLOOR, NO. 1000, NO. 100, NO. 10.
 24th FLOOR, NO. 1000, NO. 100, NO. 10.
 25th FLOOR, NO. 1000, NO. 100, NO. 10.
 26th FLOOR, NO. 1000, NO. 100, NO. 10.
 27th FLOOR, NO. 1000, NO. 100, NO. 10.
 28th FLOOR, NO. 1000, NO. 100, NO. 10.
 29th FLOOR, NO. 1000, NO. 100, NO. 10.
 30th FLOOR, NO. 1000, NO. 100, NO. 10.
 31st FLOOR, NO. 1000, NO. 100, NO. 10.
 32nd FLOOR, NO. 1000, NO. 100, NO. 10.
 33rd FLOOR, NO. 1000, NO. 100, NO. 10.
 34th FLOOR, NO. 1000, NO. 100, NO. 10.
 35th FLOOR, NO. 1000, NO. 100, NO. 10.
 36th FLOOR, NO. 1000, NO. 100, NO. 10.
 37th FLOOR, NO. 1000, NO. 100, NO. 10.
 38th FLOOR, NO. 1000, NO. 100, NO. 10.
 39th FLOOR, NO. 1000, NO. 100, NO. 10.
 40th FLOOR, NO. 1000, NO. 100, NO. 10.
 41st FLOOR, NO. 1000, NO. 100, NO. 10.
 42nd FLOOR, NO. 1000, NO. 100, NO. 10.
 43rd FLOOR, NO. 1000, NO. 100, NO. 10.
 44th FLOOR, NO. 1000, NO. 100, NO. 10.
 45th FLOOR, NO. 1000, NO. 100, NO. 10.
 46th FLOOR, NO. 1000, NO. 100, NO. 10.
 47th FLOOR, NO. 1000, NO. 100, NO. 10.
 48th FLOOR, NO. 1000, NO. 100, NO. 10.
 49th FLOOR, NO. 1000, NO. 100, NO. 10.
 50th FLOOR, NO. 1000, NO. 100, NO. 10.
 51st FLOOR, NO. 1000, NO. 100, NO. 10.
 52nd FLOOR, NO. 1000, NO. 100, NO. 10.
 53rd FLOOR, NO. 1000, NO. 100, NO. 10.
 54th FLOOR, NO. 1000, NO. 100, NO. 10.
 55th FLOOR, NO. 1000, NO. 100, NO. 10.
 56th FLOOR, NO. 1000, NO. 100, NO. 10.
 57th FLOOR, NO. 1000, NO. 100, NO. 10.
 58th FLOOR, NO. 1000, NO. 100, NO. 10.
 59th FLOOR, NO. 1000, NO. 100, NO. 10.
 60th FLOOR, NO. 1000, NO. 100, NO. 10.
 61st FLOOR, NO. 1000, NO. 100, NO. 10.
 62nd FLOOR, NO. 1000, NO. 100, NO. 10.
 63rd FLOOR, NO. 1000, NO. 100, NO. 10.
 64th FLOOR, NO. 1000, NO. 100, NO. 10.
 65th FLOOR, NO. 1000, NO. 100, NO. 10.
 66th FLOOR, NO. 1000, NO. 100, NO. 10.
 67th FLOOR, NO. 1000, NO. 100, NO. 10.
 68th FLOOR, NO. 1000, NO. 100, NO. 10.
 69th FLOOR, NO. 1000, NO. 100, NO. 10.
 70th FLOOR, NO. 1000, NO. 100, NO. 10.
 71st FLOOR, NO. 1000, NO. 100, NO. 10.
 72nd FLOOR, NO. 1000, NO. 100, NO. 10.
 73rd FLOOR, NO. 1000, NO. 100, NO. 10.
 74th FLOOR, NO. 1000, NO. 100, NO. 10.
 75th FLOOR, NO. 1000, NO. 100, NO. 10.
 76th FLOOR, NO. 1000, NO. 100, NO. 10.
 77th FLOOR, NO. 1000, NO. 100, NO. 10.
 78th FLOOR, NO. 1000, NO. 100, NO. 10.
 79th FLOOR, NO. 1000, NO. 100, NO. 10.
 80th FLOOR, NO. 1000, NO. 100, NO. 10.
 81st FLOOR, NO. 1000, NO. 100, NO. 10.
 82nd FLOOR, NO. 1000, NO. 100, NO. 10.
 83rd FLOOR, NO. 1000, NO. 100, NO. 10.
 84th FLOOR, NO. 1000, NO. 100, NO. 10.
 85th FLOOR, NO. 1000, NO. 100, NO. 10.
 86th FLOOR, NO. 1000, NO. 100, NO. 10.
 87th FLOOR, NO. 1000, NO. 100, NO. 10.
 88th FLOOR, NO. 1000, NO. 100, NO. 10.
 89th FLOOR, NO. 1000, NO. 100, NO. 10.
 90th FLOOR, NO. 1000, NO. 100, NO. 10.
 91st FLOOR, NO. 1000, NO. 100, NO. 10.
 92nd FLOOR, NO. 1000, NO. 100, NO. 10.
 93rd FLOOR, NO. 1000, NO. 100, NO. 10.
 94th FLOOR, NO. 1000, NO. 100, NO. 10.
 95th FLOOR, NO. 1000, NO. 100, NO. 10.
 96th FLOOR, NO. 1000, NO. 100, NO. 10.
 97th FLOOR, NO. 1000, NO. 100, NO. 10.
 98th FLOOR, NO. 1000, NO. 100, NO. 10.
 99th FLOOR, NO. 1000, NO. 100, NO. 10.
 100th FLOOR, NO. 1000, NO. 100, NO. 10.
 Ave. amt Lumber 200,000'

FORREST

Aug. 1886
LEBANON
 KY.

J. G. PHILLIPS FLOURING MILL
 1st 2nd 3rd 4th 5th 6th 7th 8th 9th 10th 11th 12th 13th 14th 15th 16th 17th 18th 19th 20th 21st 22nd 23rd 24th 25th 26th 27th 28th 29th 30th 31st 32nd 33rd 34th 35th 36th 37th 38th 39th 40th 41st 42nd 43rd 44th 45th 46th 47th 48th 49th 50th 51st 52nd 53rd 54th 55th 56th 57th 58th 59th 60th 61st 62nd 63rd 64th 65th 66th 67th 68th 69th 70th 71st 72nd 73rd 74th 75th 76th 77th 78th 79th 80th 81st 82nd 83rd 84th 85th 86th 87th 88th 89th 90th 91st 92nd 93rd 94th 95th 96th 97th 98th 99th 100th

17

ST. AUGUSTINE'S CHURCH

SCHOOL

DRY

REPUBLICAN SHEET No. 1

HARRISON

LANHAM & BARR'S PLANING MILL
 1st 2nd 3rd 4th 5th 6th 7th 8th 9th 10th 11th 12th 13th 14th 15th 16th 17th 18th 19th 20th 21st 22nd 23rd 24th 25th 26th 27th 28th 29th 30th 31st 32nd 33rd 34th 35th 36th 37th 38th 39th 40th 41st 42nd 43rd 44th 45th 46th 47th 48th 49th 50th 51st 52nd 53rd 54th 55th 56th 57th 58th 59th 60th 61st 62nd 63rd 64th 65th 66th 67th 68th 69th 70th 71st 72nd 73rd 74th 75th 76th 77th 78th 79th 80th 81st 82nd 83rd 84th 85th 86th 87th 88th 89th 90th 91st 92nd 93rd 94th 95th 96th 97th 98th 99th 100th

VERANDA HOTEL

CAMPBELL HO.

CHRISTIAN CHURCH

2nd PRESBYT. CHURCH

WATER

REPUBLICAN SHEET No. 1

16

LEBANON GASLIGHT CO.

SCOURING TANNERY

ED. BRITNEY TANNERY

Wagon & Shafting Storage

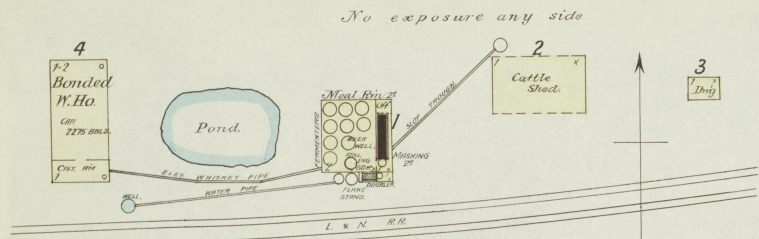
Wagon & Shafting

Freight Depot

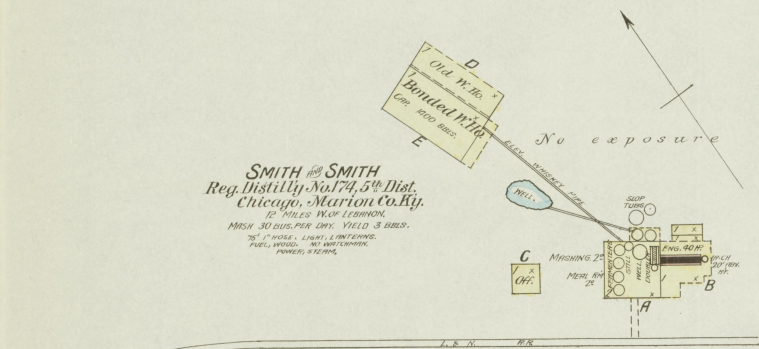
Passenger Depot

Scale of Feet.

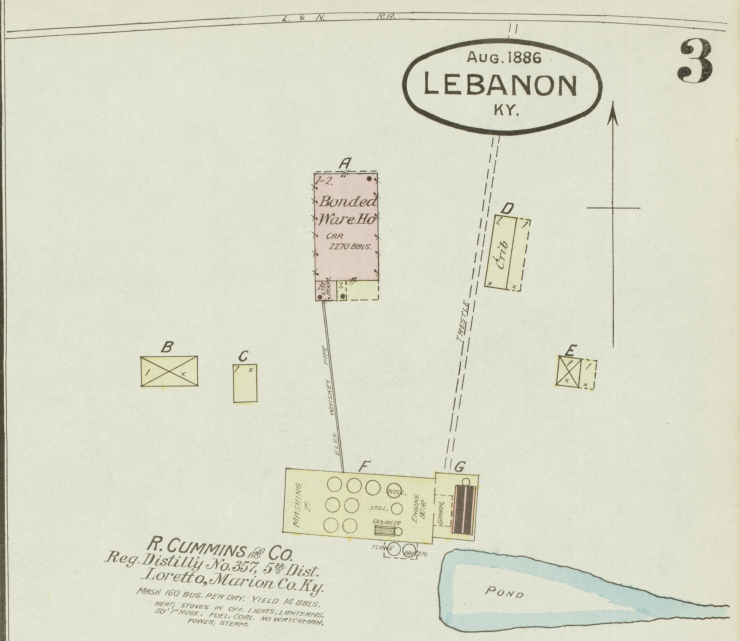
REPUBLICAN SHEET No. 1



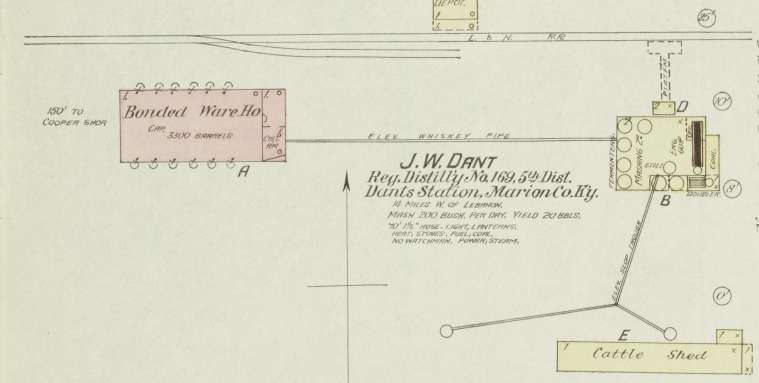
BLAIR OSBORN & BALLARD
 Reg. Distillery No. 378, 5th Dist.
 Chicago, Marion Co. Ky.
 12 MILES W. OF LEBANON.
 MASH 100 BUS. PER DAY. YIELD 12 BBLs.
 75" 1" HOLES. HEAT, STEAM.
 LIGHT, WATER, GAS, WINDMILL,
 POWER, STEAM.



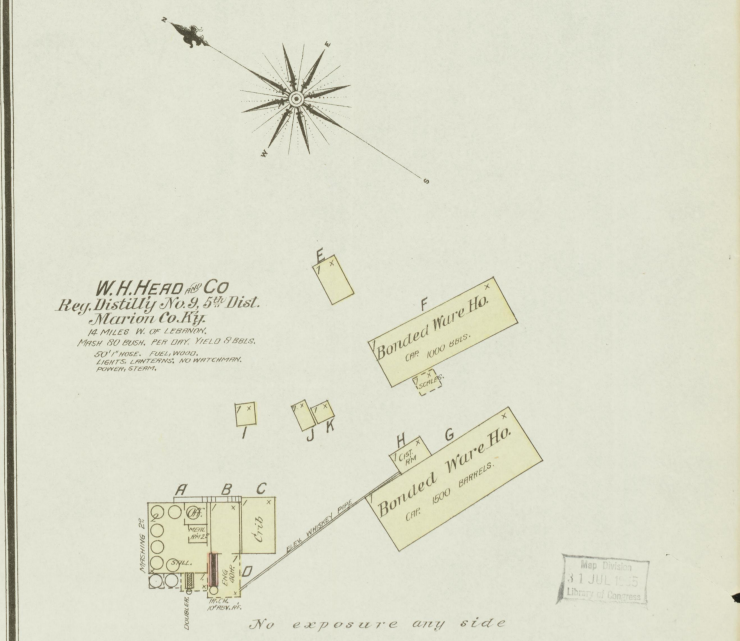
SMITH & SMITH
 Reg. Distillery No. 174, 5th Dist.
 Chicago, Marion Co. Ky.
 12 MILES W. OF LEBANON.
 MASH 30 BUS. PER DAY. YIELD 3 BBLs.
 75" 1" HOLES. LIGHT, WATER,
 FUEL, WIND, NO WINDMILL,
 POWER, STEAM.



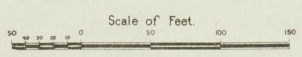
R. CUMMINS & Co.
 Reg. Distillery No. 357, 5th Dist.
 Loretto, Marion Co. Ky.
 MASH 150 BUS. PER DAY. YIELD 15 BBLs.
 HEAT, STEAM BY GAS, LIGHT, WATER,
 50" 1" HOLES. FUEL COAL, NO WINDMILL,
 POWER, STEAM.



J. W. DANT
 Reg. Distillery No. 169, 5th Dist.
 Dants Station, Marion Co. Ky.
 14 MILES W. OF LEBANON.
 MASH 200 BUS. PER DAY. YIELD 20 BBLs.
 70" 1" HOLES. LIGHT, WATER,
 HEAT, STEAM, FUEL COAL,
 NO WINDMILL, POWER, STEAM.

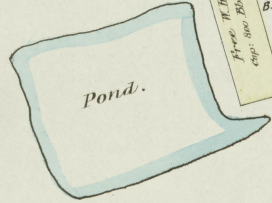
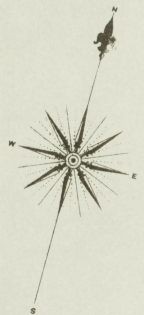


W. H. HEAD & CO
 Reg. Distillery No. 9, 5th Dist.
 Marion Co. Ky.
 14 MILES W. OF LEBANON.
 MASH 300 BUS. PER DAY. YIELD 9 BBLs.
 50" 1" HOLES. FUEL WOOD,
 LIGHT, WATER, GAS, WINDMILL,
 POWER, STEAM.



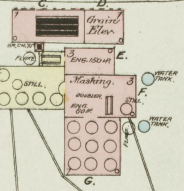
MADE BY
 31 JUL 1885
 LIBRARY OF CONGRESS

Aug. 1886
LEBANON
KY.



CHAS. KOBERT & Co.
Reg. Distillery No. 199.
5th Dist. Marion Co. Ky.

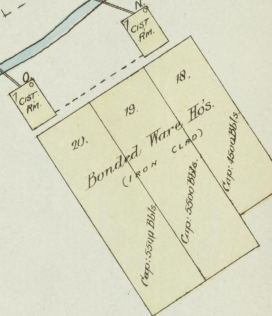
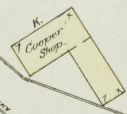
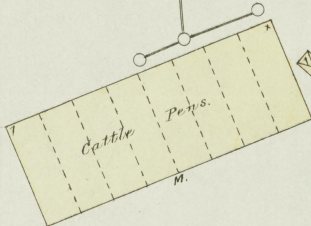
MASH 105 BU. PER. DRY.
YIELD 50 BBL. " " "
NO WATCHMAN.
50' 1" HOSE.
POWER: STEAM.
FUEL: COAL.
LIGHTS: LANTERNS.



WATHEN, MUELLER & Co.
Reg. Distillery No. 270. 5th Dist.
Marion Co. Ky.

1/2 Mile W. of Lebanon.

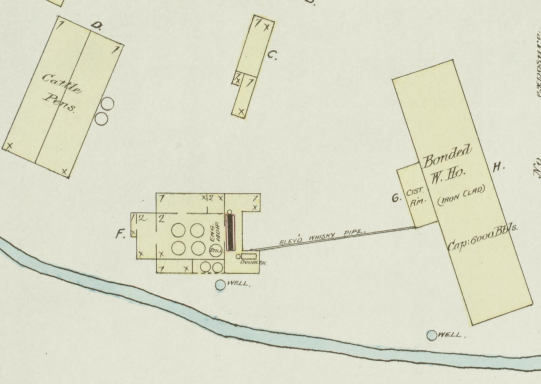
MASH 500 BU. PER. DRY.
YIELD 95 BBL. " " "
NO WATCHMAN.
50' 1" HOSE.
POWER: STEAM.
HEAT: STOVES.
FUEL: COAL.
LIGHTS: LANTERNS.



R. B. LANCASTER.
Reg. Distillery No. 283.
5th Dist. Marion Co. Ky.

1/2 Mile W. of Lebanon.

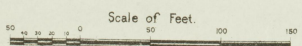
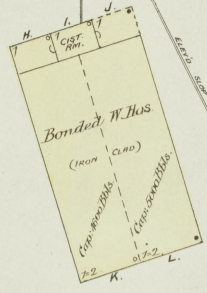
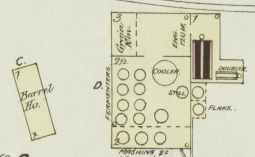
MASH 50 BU. PER. DRY.
YIELD 50 BBL. " " "
NO WATCHMAN.
50' 1" HOSE.
POWER: STEAM.
FUEL: WOOD & COAL.
LIGHTS: LANTERNS.



BOLDRICK & CALLAGHAN.
Reg. Distillery No. 370.
5th Dist. Marion Co. Ky.

1/4 Miles S. of Lebanon.

MASH 500 BU. PER. DRY.
YIELD 30 BBL. " " "
NO WATCHMAN.
50' 1" HOSE.
POWER: STEAM.
HEAT: STOVES.
FUEL: COAL.
LIGHTS: LANTERNS.



No exposure any side.

Map Entered
1 JUL 11 1886
Library of Congress

| | | | | | | | | | |
|----|----|----|----|----|----|----|----|----|----|
| 1 | 2 | 3 | 4 | 5 | 6 | 7 | 8 | 9 | 10 |
| 11 | 12 | 13 | 14 | 15 | 16 | 17 | 18 | 19 | 20 |
| 21 | 22 | 23 | 24 | 25 | 26 | 27 | 28 | 29 | 30 |
| 31 | 32 | 33 | 34 | 35 | 36 | 37 | 38 | 39 | 40 |
| 41 | 42 | 43 | 44 | 45 | 46 | 47 | 48 | 49 | 50 |