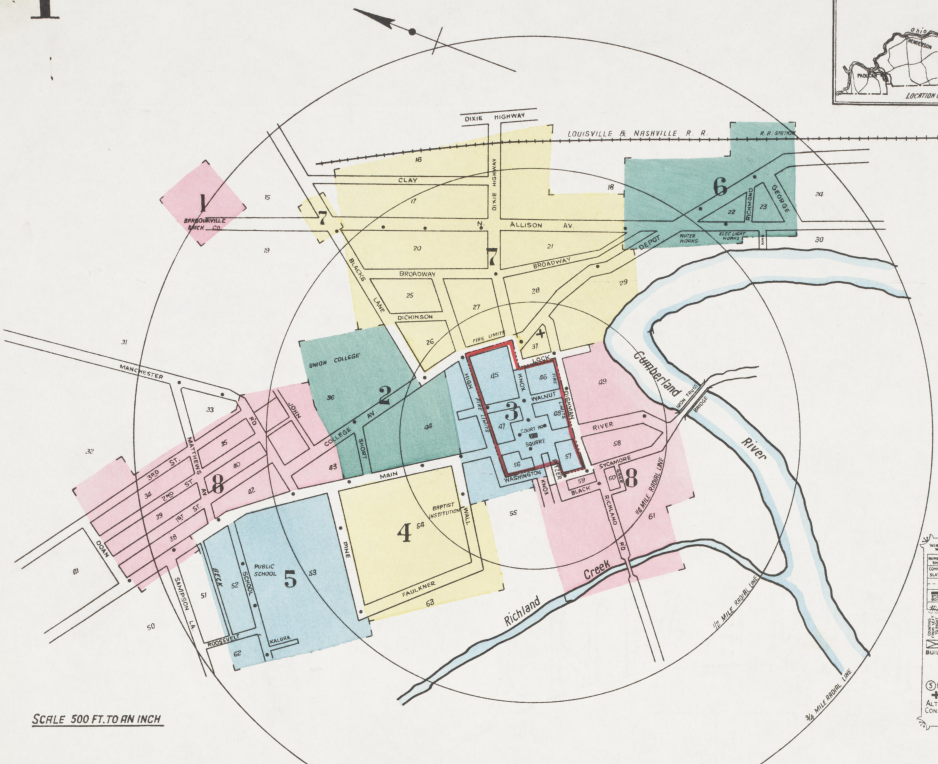


APR 1 0 '28

C.F. 15062



SCALE 500 FT. TO AN INCH

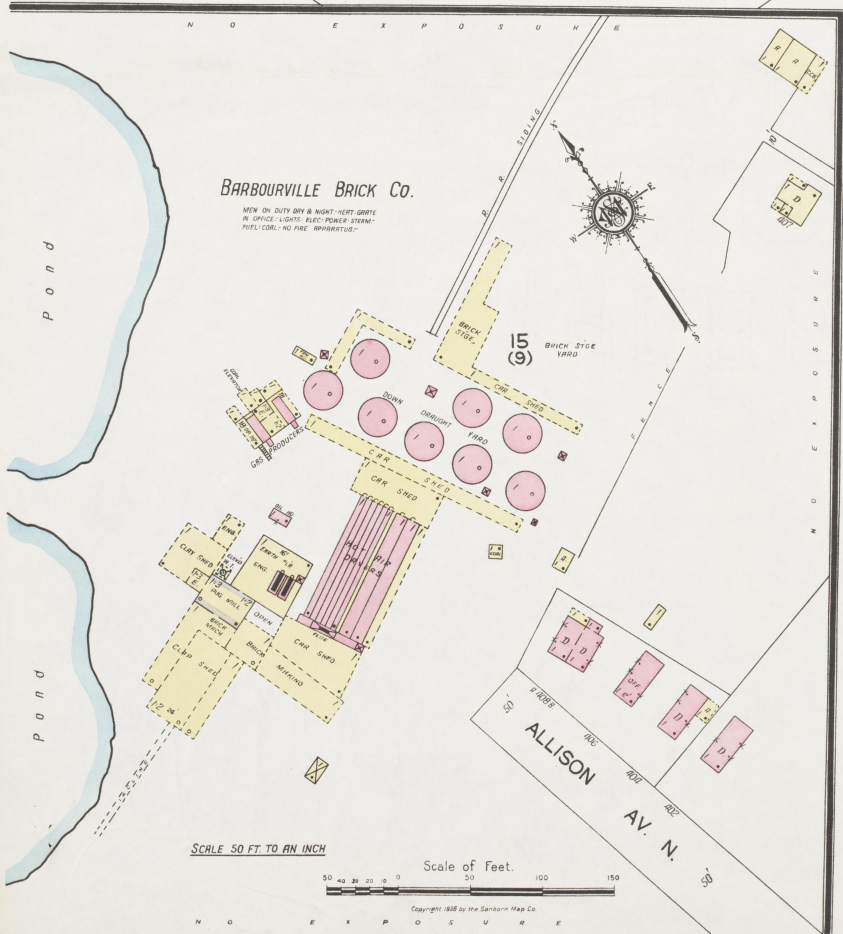
WATER FACILITIES:
Owned by private corpn.-Gravity a direct pressure system - Supply from 2 wells, by Gould pump, size 8 x 10, capacity 700 gals per min a pumped direct into mains a overflow into 500,000 gals reservoir elevat 800 above business section of town. Normal pressure 100 lbs per sq inch - Average daily consumption 50,000 gals. Size of mains 4" to 8" mains. Total 5 miles. 46 double hydrants system installed in year 1908.

FIRE DEPT:
Volunteer, not organized. - No hand engine - One auto combin hose a chemical cart a 700' of 2 1/2" standard hose - Fire alarm whistle at electric light plant - Principal streets paved about 3 miles. Public lighting - elec - grades approx level.

KEY

ALTERNATE HOUSE NUMBERS ARE ACTUAL AND ARE THOSE UPON BUILDING - AS IN CASE OF DISCREPANCY TWO OR MORE CONSECUTIVE NUMBERS HAVE BEEN SUPPLIED TO BUILDINGS NOT SHOWING ACTUAL NUMBERS.

| | |
|-----|-------------|
| 1 | WELL |
| 2 | WATER TOWER |
| 3 | HYDRANT |
| 4 | WATER MAIN |
| 5 | SEWER MAIN |
| 6 | RAILROAD |
| 7 | STREET |
| 8 | ALLEY |
| 9 | BRIDGE |
| 10 | RAILROAD |
| 11 | RAILROAD |
| 12 | RAILROAD |
| 13 | RAILROAD |
| 14 | RAILROAD |
| 15 | RAILROAD |
| 16 | RAILROAD |
| 17 | RAILROAD |
| 18 | RAILROAD |
| 19 | RAILROAD |
| 20 | RAILROAD |
| 21 | RAILROAD |
| 22 | RAILROAD |
| 23 | RAILROAD |
| 24 | RAILROAD |
| 25 | RAILROAD |
| 26 | RAILROAD |
| 27 | RAILROAD |
| 28 | RAILROAD |
| 29 | RAILROAD |
| 30 | RAILROAD |
| 31 | RAILROAD |
| 32 | RAILROAD |
| 33 | RAILROAD |
| 34 | RAILROAD |
| 35 | RAILROAD |
| 36 | RAILROAD |
| 37 | RAILROAD |
| 38 | RAILROAD |
| 39 | RAILROAD |
| 40 | RAILROAD |
| 41 | RAILROAD |
| 42 | RAILROAD |
| 43 | RAILROAD |
| 44 | RAILROAD |
| 45 | RAILROAD |
| 46 | RAILROAD |
| 47 | RAILROAD |
| 48 | RAILROAD |
| 49 | RAILROAD |
| 50 | RAILROAD |
| 51 | RAILROAD |
| 52 | RAILROAD |
| 53 | RAILROAD |
| 54 | RAILROAD |
| 55 | RAILROAD |
| 56 | RAILROAD |
| 57 | RAILROAD |
| 58 | RAILROAD |
| 59 | RAILROAD |
| 60 | RAILROAD |
| 61 | RAILROAD |
| 62 | RAILROAD |
| 63 | RAILROAD |
| 64 | RAILROAD |
| 65 | RAILROAD |
| 66 | RAILROAD |
| 67 | RAILROAD |
| 68 | RAILROAD |
| 69 | RAILROAD |
| 70 | RAILROAD |
| 71 | RAILROAD |
| 72 | RAILROAD |
| 73 | RAILROAD |
| 74 | RAILROAD |
| 75 | RAILROAD |
| 76 | RAILROAD |
| 77 | RAILROAD |
| 78 | RAILROAD |
| 79 | RAILROAD |
| 80 | RAILROAD |
| 81 | RAILROAD |
| 82 | RAILROAD |
| 83 | RAILROAD |
| 84 | RAILROAD |
| 85 | RAILROAD |
| 86 | RAILROAD |
| 87 | RAILROAD |
| 88 | RAILROAD |
| 89 | RAILROAD |
| 90 | RAILROAD |
| 91 | RAILROAD |
| 92 | RAILROAD |
| 93 | RAILROAD |
| 94 | RAILROAD |
| 95 | RAILROAD |
| 96 | RAILROAD |
| 97 | RAILROAD |
| 98 | RAILROAD |
| 99 | RAILROAD |
| 100 | RAILROAD |



SCALE 50 FT. TO AN INCH

Scale of Feet.

Copyright 1926 by the Sanborn Map Co.

INDEX

| STREETS | NUMBER | NUMBER | NUMBER |
|---------------------------|--------|----------------------|--------|
| Allison Ave. | A | 100-153 | 7 |
| - - - N. | - | 154-309 | 6 |
| - - - | - | 100-259 | 7 |
| - - - | - | 402-409 | 1 |
| Beck (arbitrary). | B | 5 & 8 | - |
| Black's Lane. | - | 2 & 7 | - |
| Broadway. | - | 6 & 7 | - |
| Clay. | C | 100-255 | 7 |
| College Ave. | - | 200-220 | 7 |
| - - - | - | 201-219 | 3 |
| - - - | - | 221-227 | 2 |
| - - - | - | 300-419 | 2 |
| - - - | - | 420-435 | 9 |
| Country Road. | - | 100-141 | 3 |
| Court House Square. | - | - | - |
| Depot. | D | 200-269 | 7 |
| Dickinson (arbitrary). | - | 270-513 | 6 |
| Dishman. | - | 100-286 | 8 |
| - - - | - | 234-249 | 7 |
| - - - | - | 1502-1515, arbitrary | 3 |
| - - - | - | 1708-1712. | 7 |
| Dixie Highway. | E | 7 | - |
| Elkton Place (arbitrary). | - | 100-121 | 3 |
| Faulkner. | F | 190-241 | 4 |
| First. | - | 600-759 | 8 |
| George. | G | 6 | - |
| High. | - | 1-228 | 3 |
| - - - | - | 1418-1421, arbitrary | 7 |
| John. | J | 8 | - |
| Kalura (arbitrary). | K | 5 | - |
| King. | - | 1-236 | 3 |
| Knox. | - | 287-241 | 3 |
| - - - | - | 288-240 | 7 |
| - - - | - | 415-717 | 8 |
| - - - | - | 1401-1421, arbitrary | 3 |
| Lock. | L | 3, 7 & 8 | - |
| Main. | M | 100-221 | 3 |
| - - - | - | 304-410 | 3 |
| - - - | - | 305-715 | 4 & 5 |
| Manchester Road. | - | 415-717 | 8 |
| Matthews Ave. | - | 200-419 | 8 |
| Oase (arbitrary). | O | 8 | - |
| Pipe. | P | 101-149 | 5 |
| - - - | - | 110-148 | 4 |
| Pitzer. | - | 141-170 | 3 |
| - - - | - | 290-211 | 8 |
| Richland Road. | R | 8 | - |
| Richmond. | - | 100-107 | 3 |
| River. | - | 303-284 | 8 |
| Roosevelt. | - | 5 | - |
| Sampson Lane. | S | 100-175 | 8 |
| School. | - | 600-759 | 8 |
| Second. | - | - | - |
| Short. | - | 100-106 | 3 |
| Sinax Place (arbitrary). | - | 101-109 | 8 |
| Sycamore. | - | 200-251 | 8 |
| - - - | - | 1804-1837, arbitrary | 8 |
| Third. | T | 600-759 | 8 |
| Wall. | W | 100-126 | 3 |
| - - - | - | 101-127 | 4 |
| - - - | - | 123-149 | 3 |
| Walnut. | - | 8 | - |
| Washington. | - | 3 | - |

| SPECIALS | NUMBER | |
|--|--------|---|
| Armory. | A | 3 |
| Barbourville Baptist Institute. | B | 4 |
| Brick Co. | - | 1 |
| Electric Light, Heat and Power Co. | - | 6 |
| Ice Co. | - | 6 |
| Cream Factory. | - | 6 |
| Public School. | - | 5 |
| Steam Laundry. | - | 6 |
| Supply Co. | - | 6 |
| Water Co., Pumping Station. | - | 3 |
| Blackstone Hotel. | - | 3 |
| Christian Church. | C | 3 |
| County Court House and Jail. | - | 3 |
| Dixie Inn. | D | 7 |
| Wholesale Grocery Co. | - | 6 |
| Faulkner Hotel. | F | 5 |
| T. F. & Sons, S. & D. Warehouse. | - | 6 |
| Fire Department Station, 1708-1704 Dishman St. | - | 7 |
| First Baptist Church. | - | 3 |
| Methodist Episcopal Church. | - | 2 |
| Jellico Grocery Co., Wholesale Grocery. | J | 6 |
| Knox Grocery Co. | K | 3 |
| Logan Hospital. | L | 3 |
| L. & N. R. R. Depots. | - | 6 |
| Masonic Hall. | M | 3 |
| Minton, T. W., Co., Hickory Dimension Stock M'f'g. | - | 9 |
| Patterson Lumber Co. | P | 3 |
| Post Office. | - | 3 |
| Presbyterian Church. | - | 3 |
| Rapp Lumber Co., Saw Mill. | R | 9 |
| Rathfon-Scent Co., Planing Mill. | - | 6 |
| Riddle House, Boarding. | - | 3 |
| St. Gregory's Roman Catholic Church. | S | 7 |
| Union College. | U | 2 |

* Indicates only one side of Street shown.

2

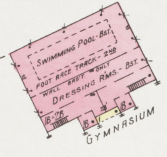
N O E X P O S U R E

7

2

FEB. 1926
BARBOURVILLE
KY.

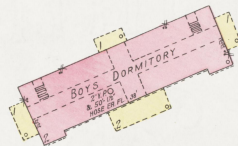
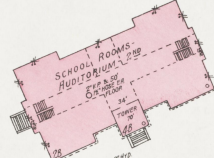
ATHLETIC GROUNDS BEYOND



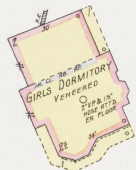
LANE
S. KY. 25'

7

UNION COLLEGE
36
(19)



NOTE: STERN LIGHTS; ELECTRIC & 220-VOL. CHEMICAL EXTPRS. OR FL.
PRIVATE WATER SYSTEM FROM MAIN & FORCE PUMP TO 6500 GALL. GRANTY
W. TRINK ALSO CITY WATER CONNECTION



COLLEGE AV.

(21)

3

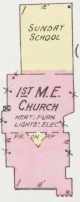
8

SHORT

43
(20)

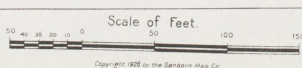
44

(8)



MAIN

4



Copyright 1926 by the Searns Map Co.

3

3

FEB. 1926
BARBOURVILLE
KY.



(3)

45
(4)

LOCK

46
(5)

44

(6)

47
(7)

48
(8)

MAIN

COURT-HOUSE

KNOX COUNTY COURT HO.

RIVER

SQUARE

4 WALL

55
(9)

56
(10)

55
(11)

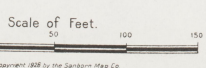
57
(12)

WASHINGTON

COUNTY JAIL

PITZER

SYCAMORE



Copyright 1926 by the Sanborn Map Co.

4

5

4

8

MAIN
2

FEB. 1926
BARBOURVILLE
KY.

PINE

FAULKNER

54

63
(31)

(23)

3

55

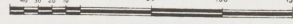


FOUNDATION

FAULKNER HOTEL

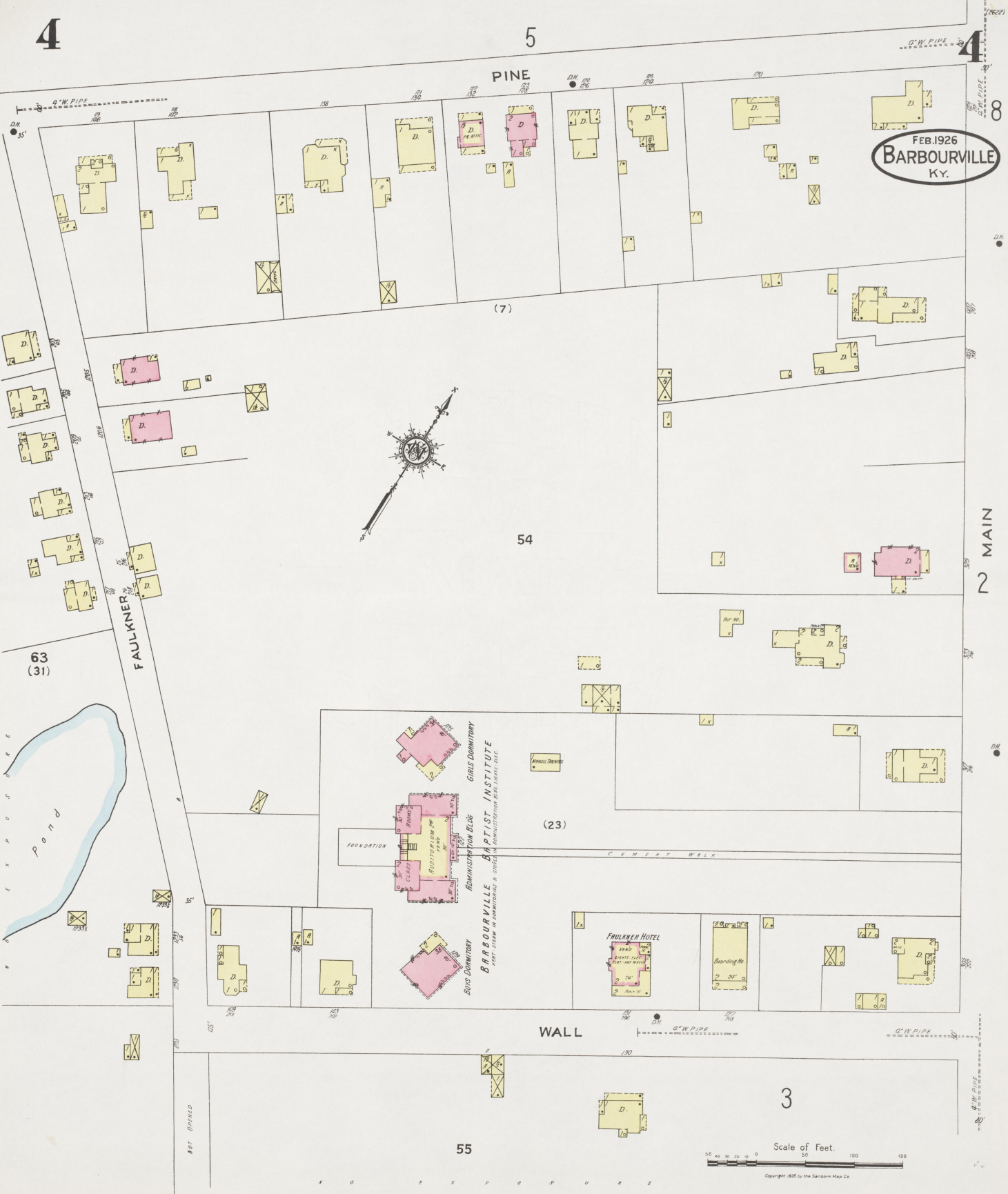
WALL

Scale of Feet.



Copyright 1926 by the Searborn Map Co.

BARBOURVILLE BAPTIST INSTITUTE
EPIST. DORMITORY
ADMINISTRATION BLDG.
GIRLS DORMITORY



5

8

FEB. 1926
BARBOURVILLE
KY.

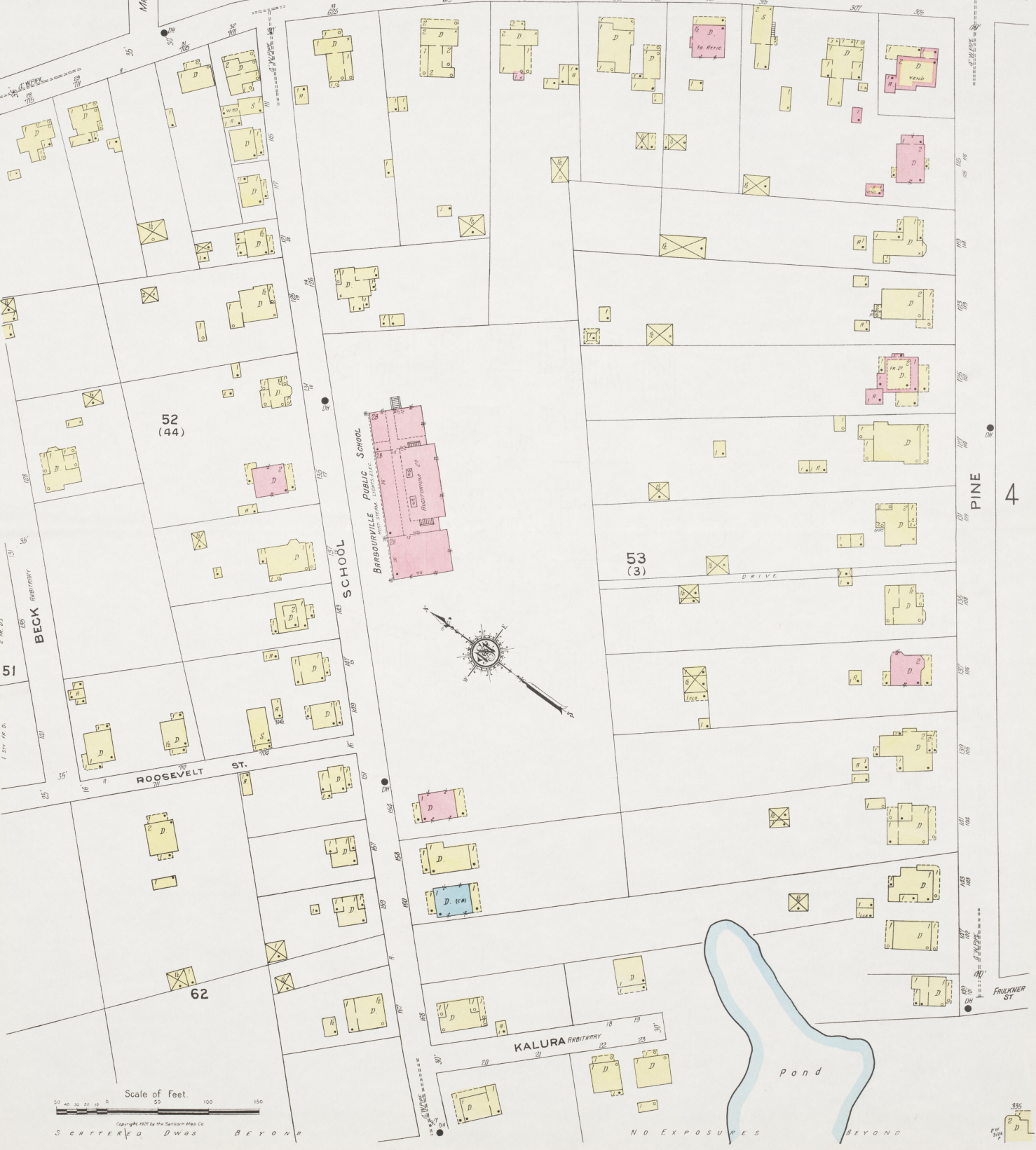
5

(822)

MAIN

MATTHEWS AV

MANCHESTER ROAD



52
(44)

53
(3)

51

ROOSEVELT ST.

SCHOOL

Barbourville Public School

PINE

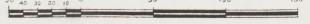
4

KALURA ARBITRARY

pond

FRANKNER ST

Scale of Feet.



Copyright 1925 by the Sanborn Map Co
SCATTERED DWGS BEYOND

NO EXPOSURES BEYOND

N O E X P O S U R E B E Y O N D

(7627)

7

2

19

7

FEB. 1926
BARBOURVILLE
KY.

SCALE 100 FT. TO AN INCH
ENTIRE SHEET

L. B. N. R. R. B. Y. O. N. D.

16

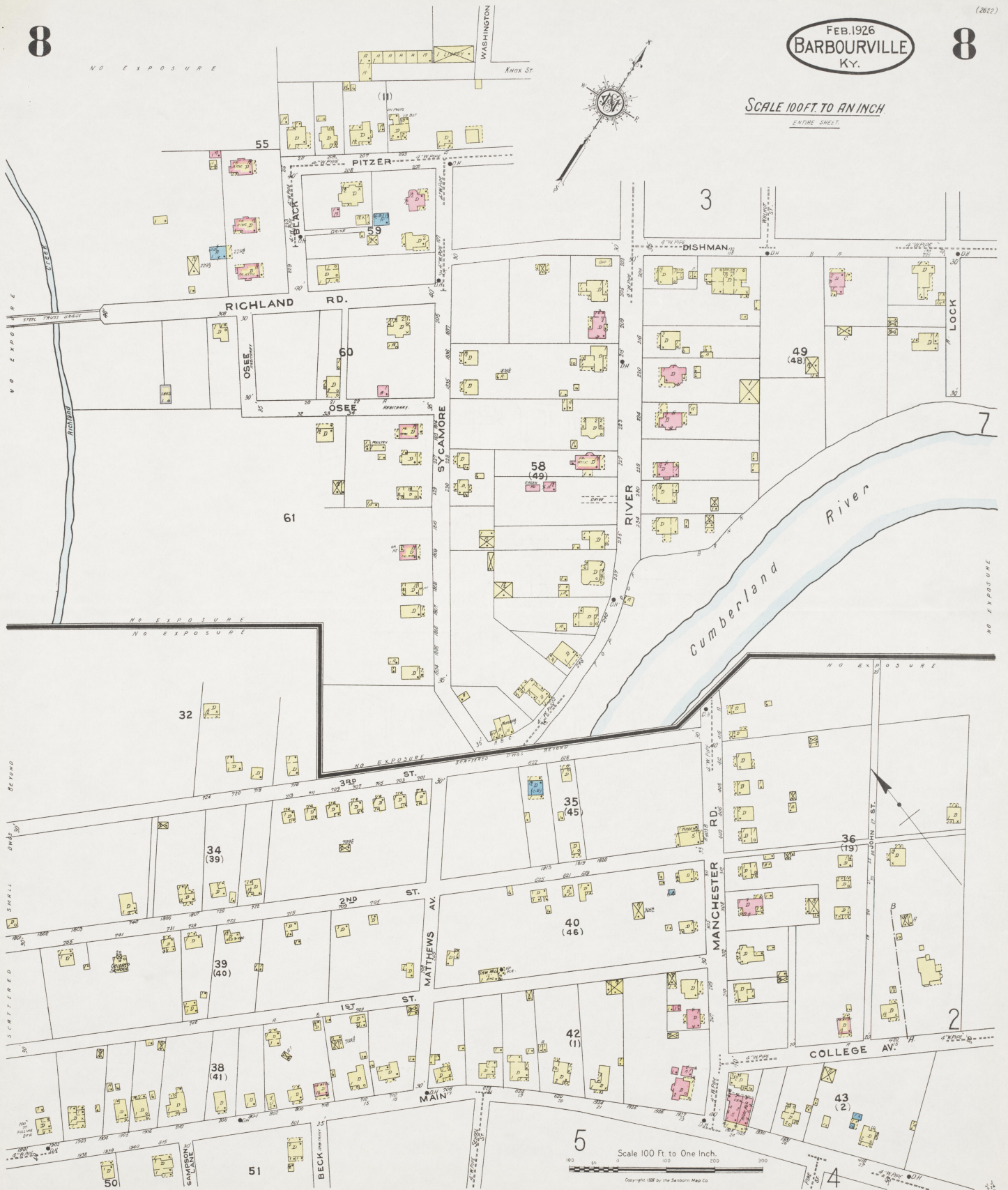


Scale 100 Ft. to One Inch.

Copyright 1926 by the Sanborn Map Co.

NO EXPOSURE

SCALE 100 FT. TO AN INCH
ENTIRE SHEET.



5 Scale 100 Ft to One Inch.
Copyright 1926 by the Sanborn Map Co.

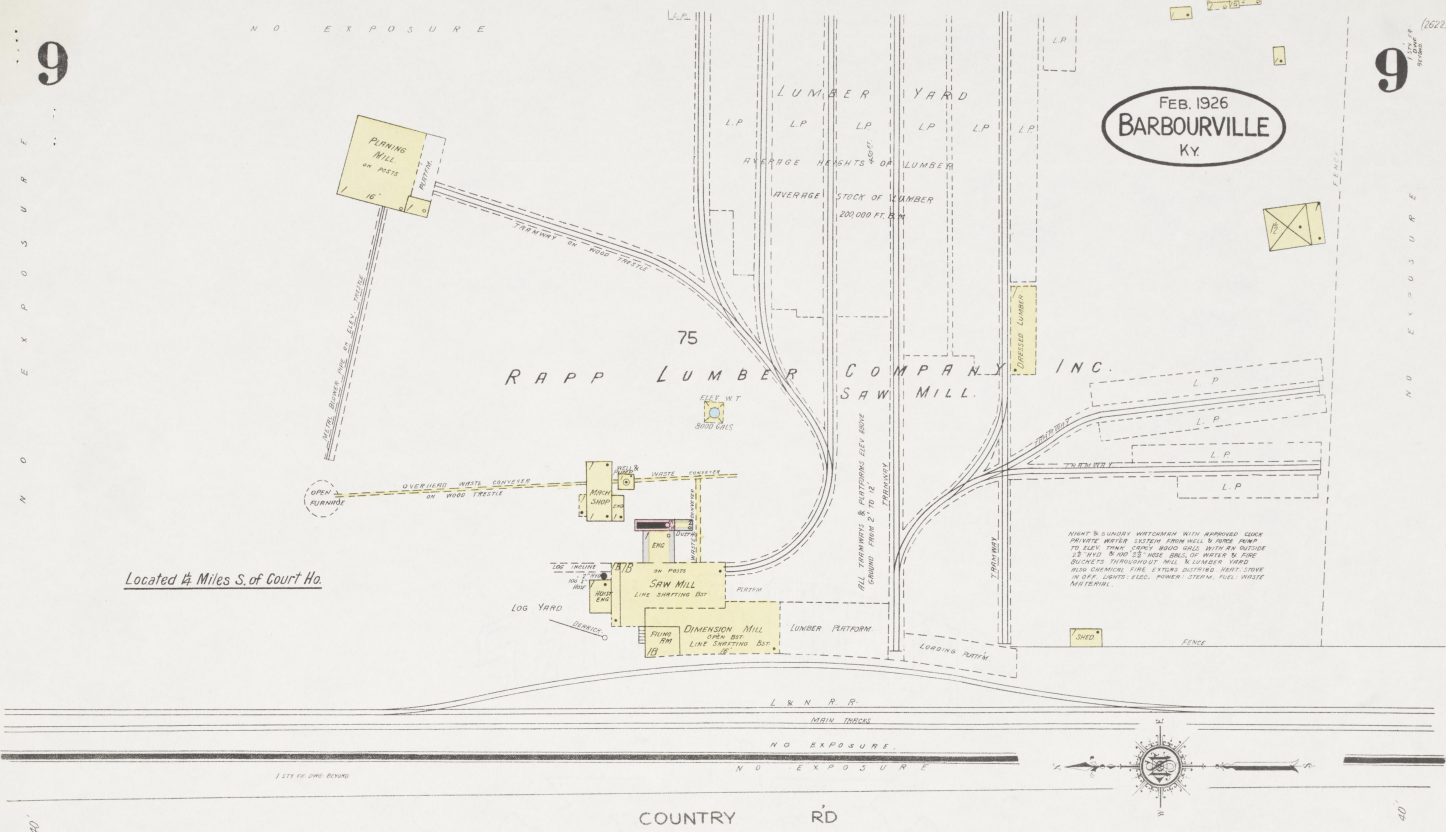
N O E X P O S U R E

(622)

FEB. 1926
BARBOURVILLE
KY.

RAPP LUMBER COMPANY, INC. SAW MILL.

Located 1/4 Miles S. of Court Ho.

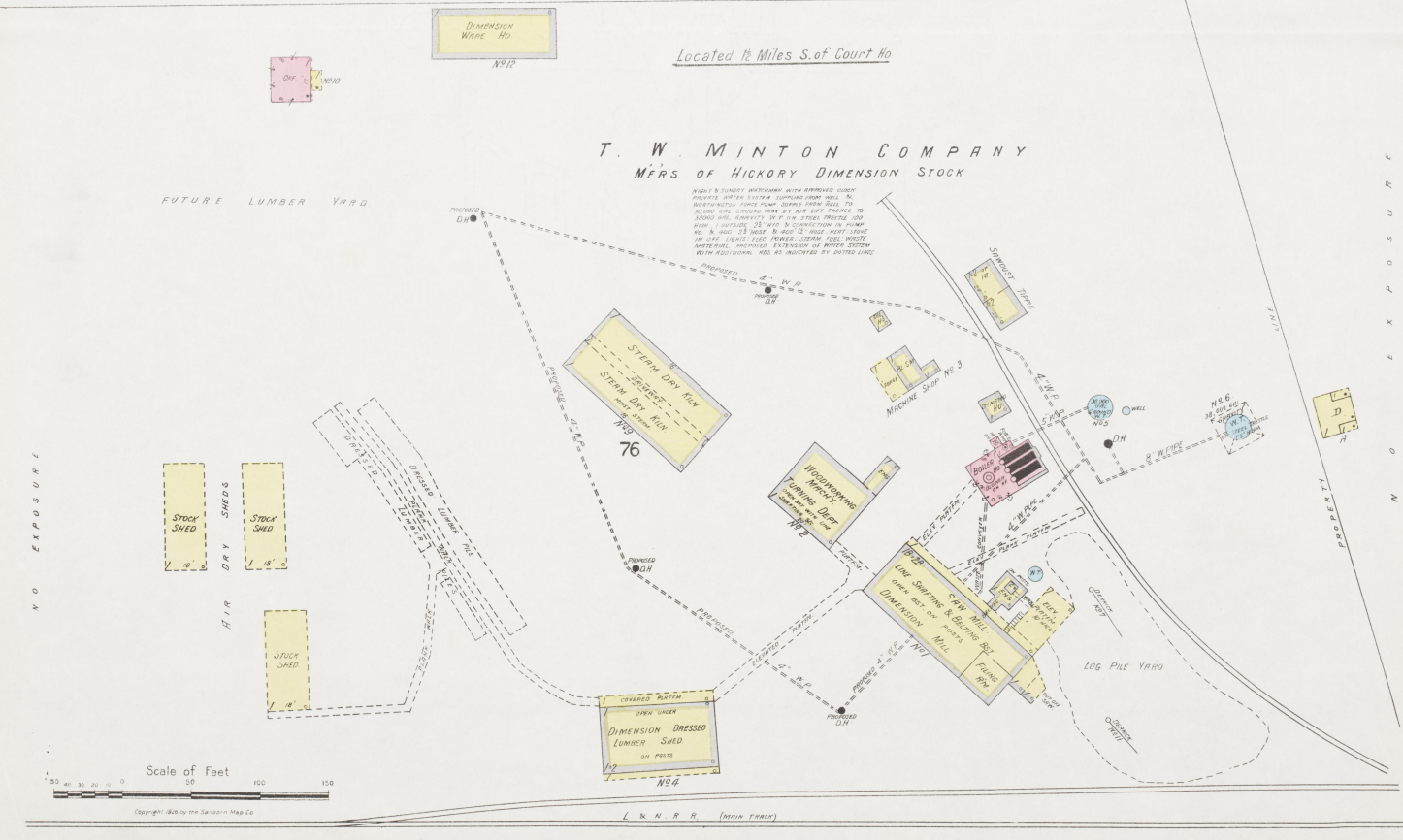


COUNTRY RD

Located 1/4 Miles S. of Court Ho.

T. W. MINTON COMPANY MFRS OF HICKORY DIMENSION STOCK

FUTURE LUMBER YARD



Scale of feet

N O E X P O S U R E