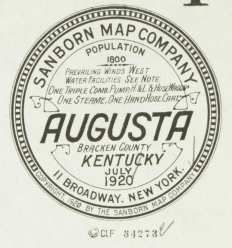
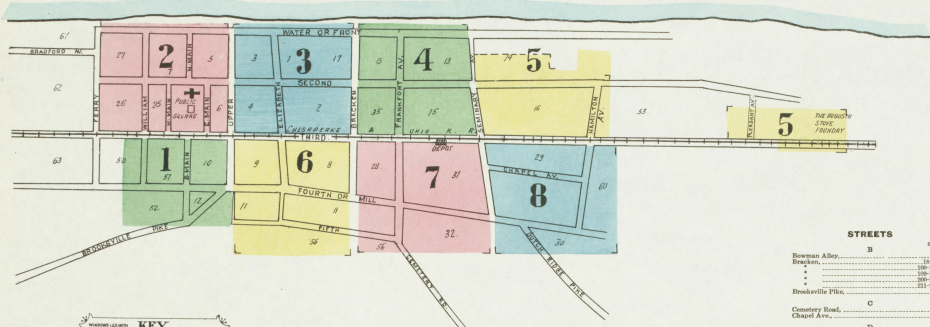


NOV - 2 1920

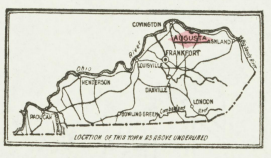


Ohio River.

**WATER FACILITIES**  
Not good supply from private wells & cisterns & no public fire cisterns.  
**FIRE DEPT.**  
Volunteer 25 members partly paid. Triple combination 200 gal. pump, hose & ladder & hose wagon drawn by Ford Motor. Chapp Jones 1st class steam boiler held in reserve. 1 hand white cart, 1st class cotton roller. Lined hose in good condition 600'. 24' hose out of gauge. Fire alarm elec. Light plant whistle.  
Principal streets macadamized, grades practically level, no fire lanes, elec. light part of the tube.



**KEY**  
FIRE WALL CONCRETE ROOF  
WOOD CONCRETE ROOF  
WOOD CONCRETE ROOF  
METAL WALLS ASPHALT ROOF  
METAL WALLS ASPHALT ROOF  
FRAME METHOD  
OPENING WITH IRON DOOR  
SON BOSS  
WINDOWS & DOOR SHUTTERS  
WINDOW 1ST STORY  
WINDOWS & STORES  
2 1/2" x 4"  
FRAME (C) CONCRETE BLOCK  
BUILDINGS COLORED YELLOW ARE FRAME  
RED  
BLUE  
BROWN FOR ROOF  
INDICATE  
RELIEF SHOTS  
AUTOMATIC  
FIRE STATION, AS SHOWN ON KEY MAP  
ALTERNATE STREET NUMBERS ARE ARBITRARY  
CONNECTIVE STREET NOS ARE ARBITRARY



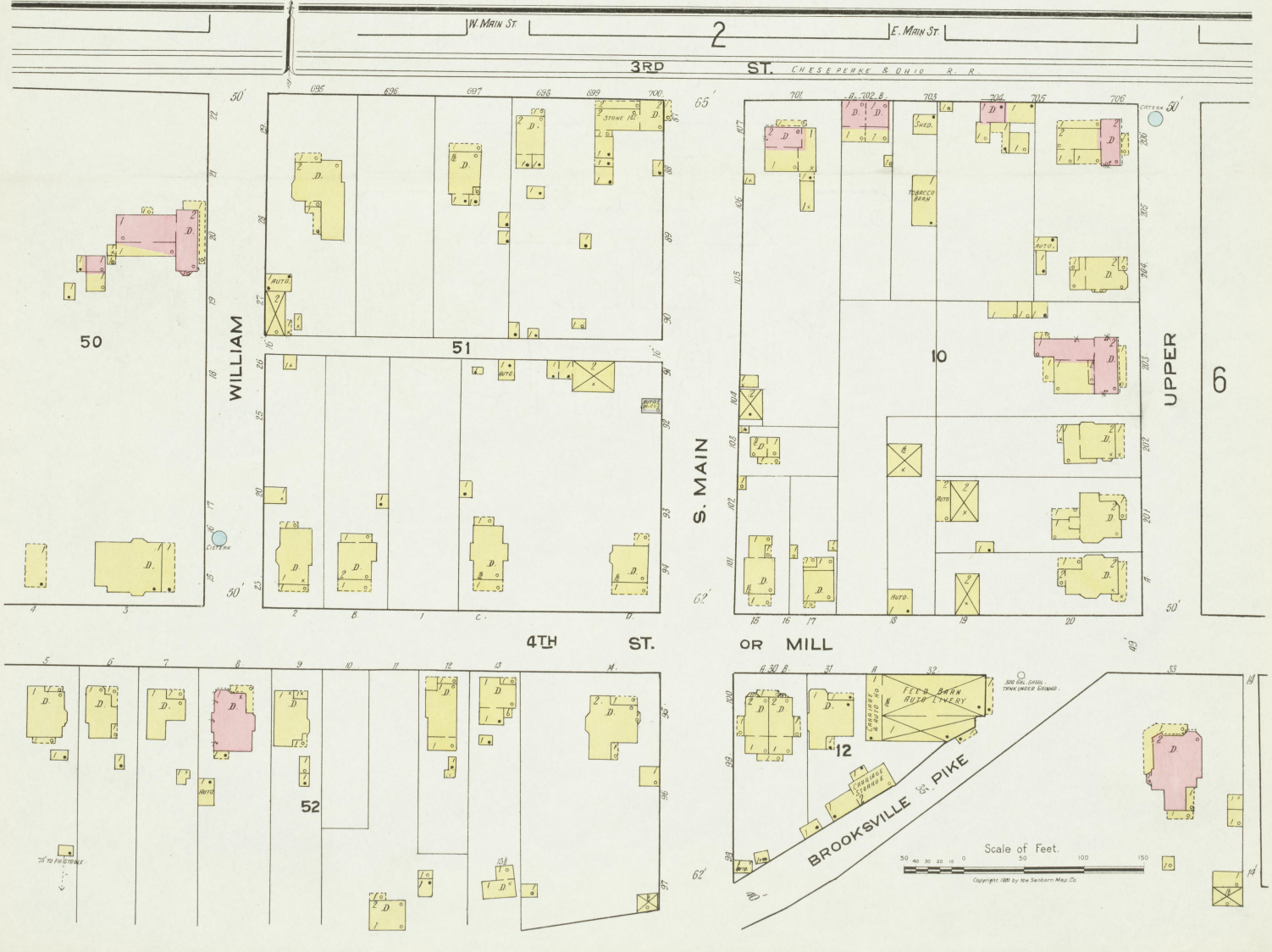
### INDEX

STREETS	SECT	SECT	SECT
Bowman Alley	B	200-205	200-205
Dupont	D	200-205	200-205
Hooksville Pike	C	200-205	200-205
Century Road	C	200-205	200-205
Chapel Ave.	D	200-205	200-205
Dutch Ridge Pike	D	200-205	200-205
Elizabeth	E	200-205	200-205
Factory Alley	F	200-205	200-205
Fourth	F	200-205	200-205
Hampton Ave.	H	200-205	200-205
Thirtieth	T	200-205	200-205
Water	W	200-205	200-205
William	W	200-205	200-205

**SPECIALS**

Augusta Baptist Church	A
Augusta Episcopal Church	E
Augusta Methodist Church	M
Augusta Presbyterian Church	P
Augusta Roman Catholic Church	R
Augusta Synagogue	S
Augusta Tabernacle	T
Augusta Wesleyan Church	W

**NOTE**-House Numbers given are arbitrary.



OHIO RIVER BEYOND.

FIRE CONTROL

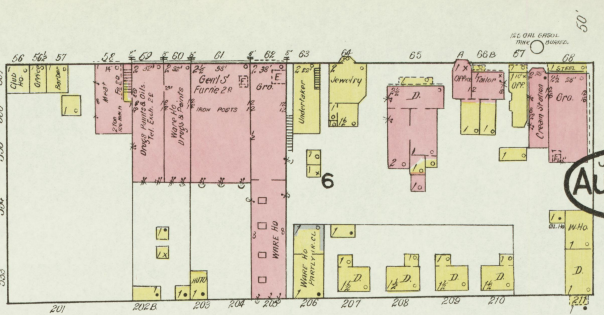
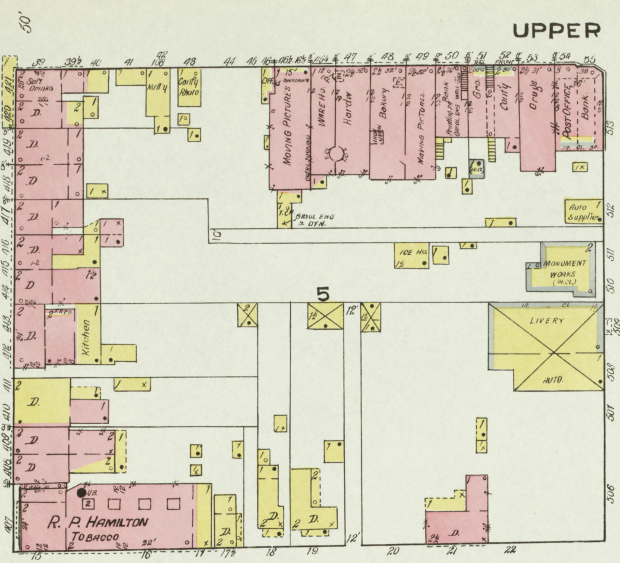
WATER OR FRONT

UPPER 3

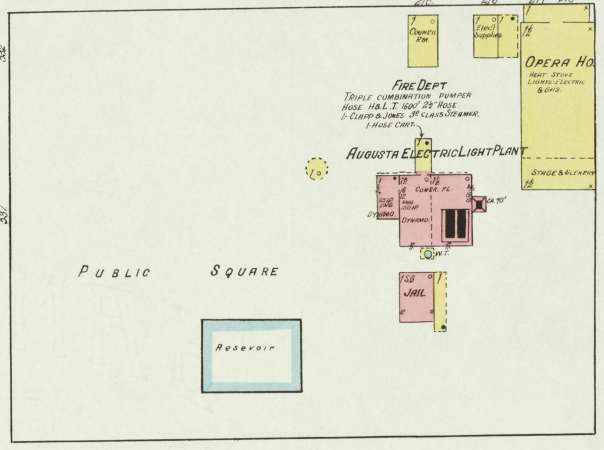
3

2

JULY 1920  
AUGUSTA  
K.Y.



E. MAIN



PUBLIC SQUARE

Reservoir

AUGUSTA ELECTRIC LIGHT PLANT

OPERA HO.

FIRE DEPT

TRIPLE COMBINATION PUMPER

HOSE & L. I. HOSE 2 1/2\"

CLAPP & JONES 3rd CLASS STEAMER

1 HOSE COYS.

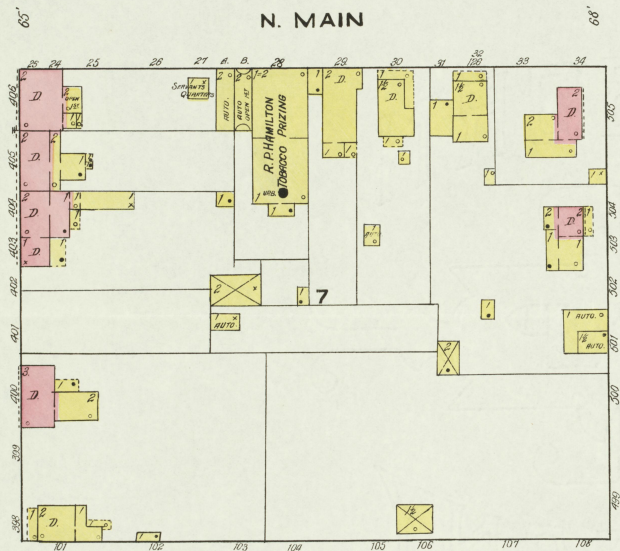
ST.

ST.

S MAIN ST

3RD

1



N. MAIN

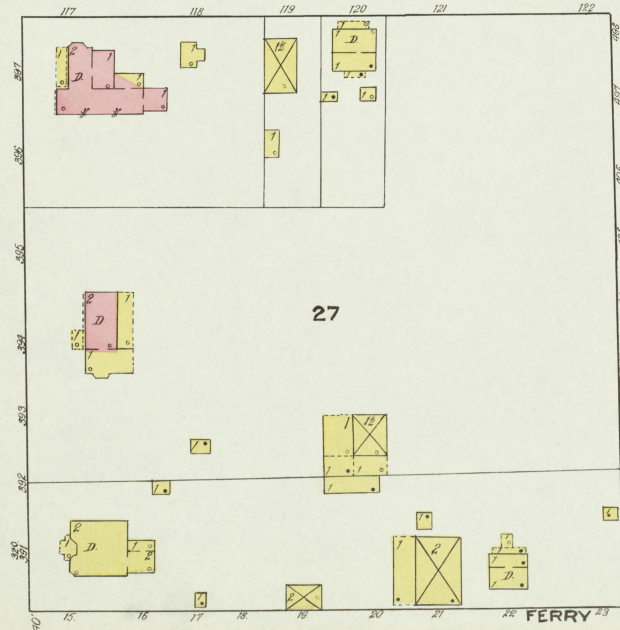
W. MAIN

2ND

3RD

1

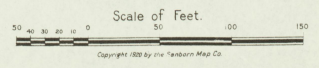
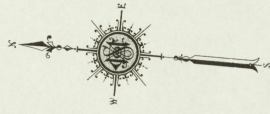
WILLIAM



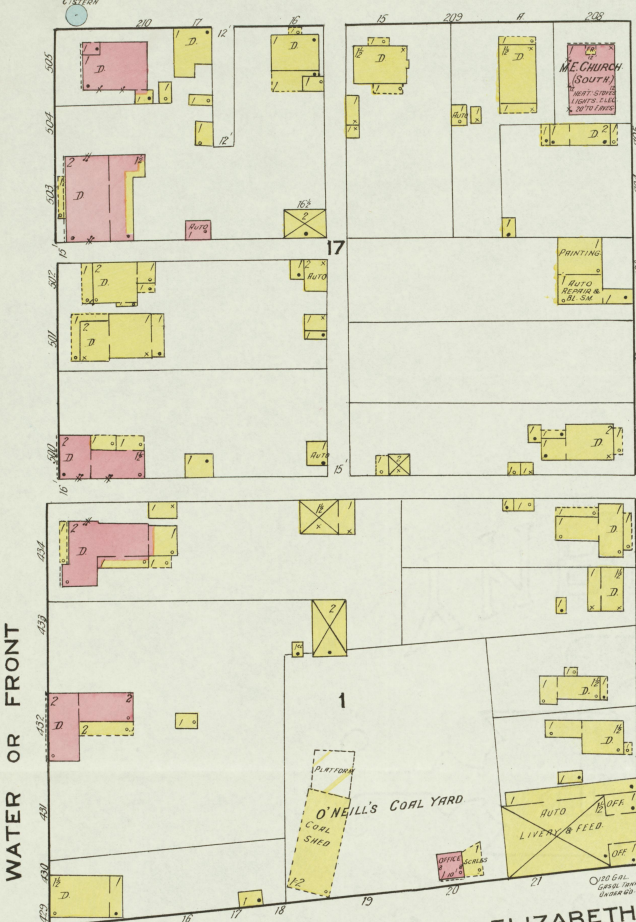
27

26

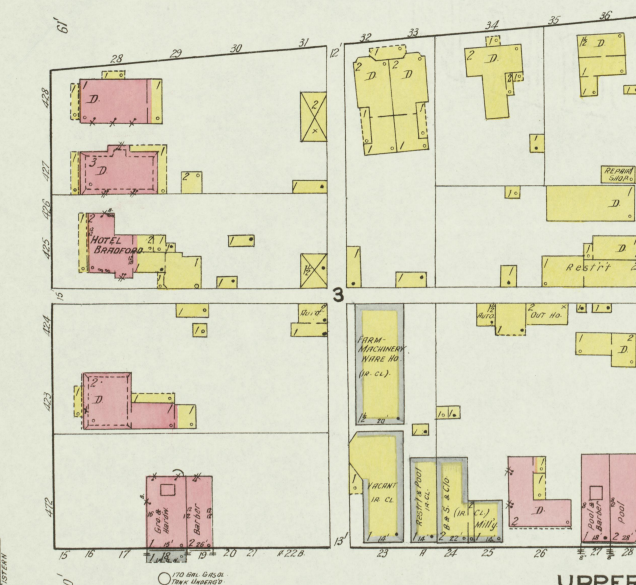
FERRY



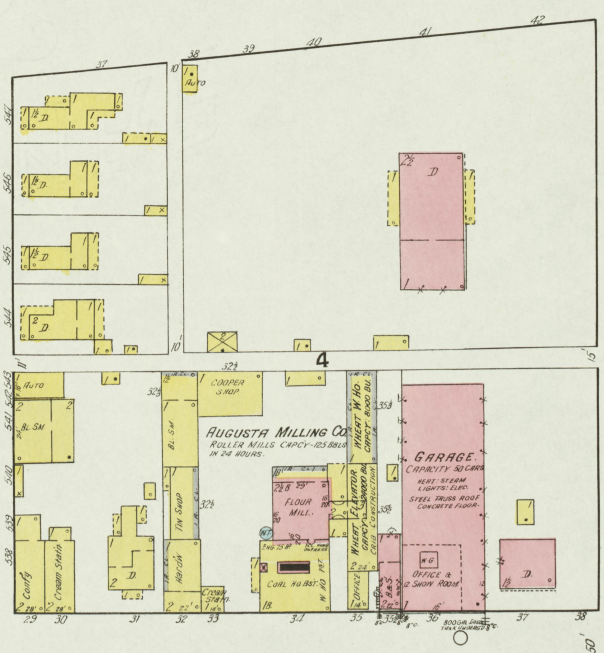
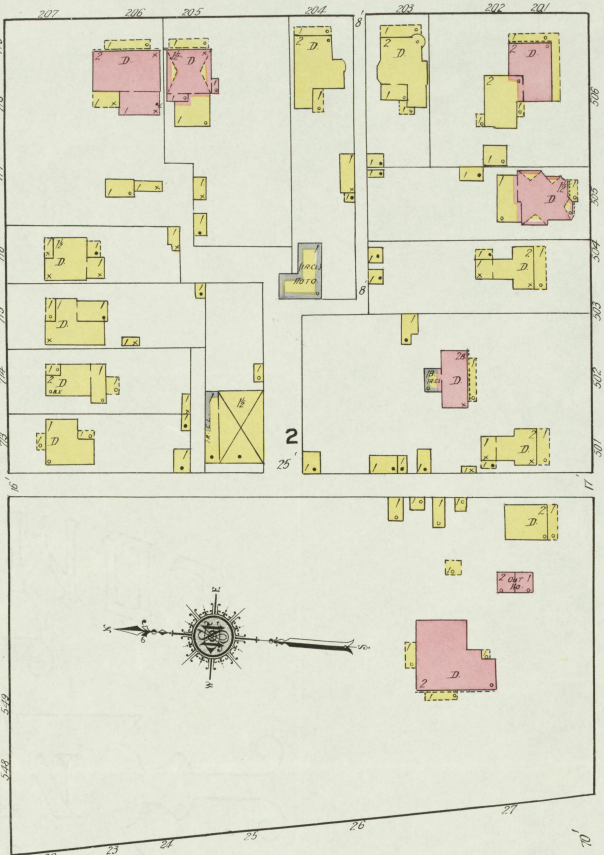
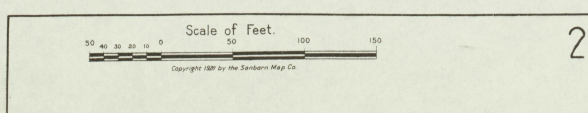
BRACKEN



ELIZABETH



UPPER



AUGUSTA MILLING CO.

- NO SWITCHMAN: POWER & HEAT: STEAM: LIGHTS: ELEC: FUEL: COAL: FINE PAULS & BELLS: DISTROFF: 8 CHEM EXHAUSTS:  
MACHINERY
- |                        |                            |                      |
|------------------------|----------------------------|----------------------|
| 857- 1 CORN SHELLER    | 328- FINEST SCOURER        | 340- 1 WHEAT SCOURER |
| 5 STAYS DOUBLE ROLLS   | 1 ROUND ROLL               | 1 SEPARATOR          |
| 2 FLOUR PACKERS        | 1 BUILDING WAGON           | 1 FLOUR SIFTER       |
| 1 BRAN PICKER          | 1 PUNIFIER                 | 1 BOLLING ROLL       |
| 1 THREE HIGH CORN MILL | 1 DRYING                   | 1 FLOUR SIFTER       |
| 1 WHEAT STEAMER        | 2 PULVERIZERS MUST COLLECT | 1 SWINGING SIFTER    |

WATER OR FRONT

D. H. I. O. R. I. V. E. R. B. E. Y. O. N. D.

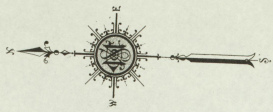
THE HISTORY

2ND ST.

3RD ST.

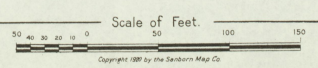
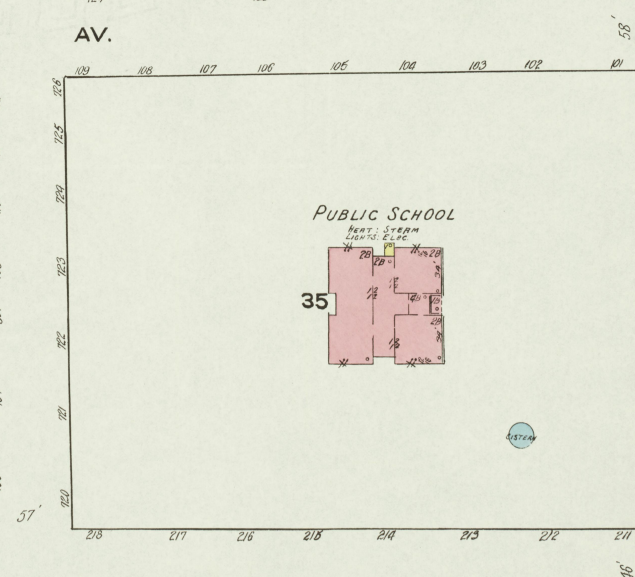
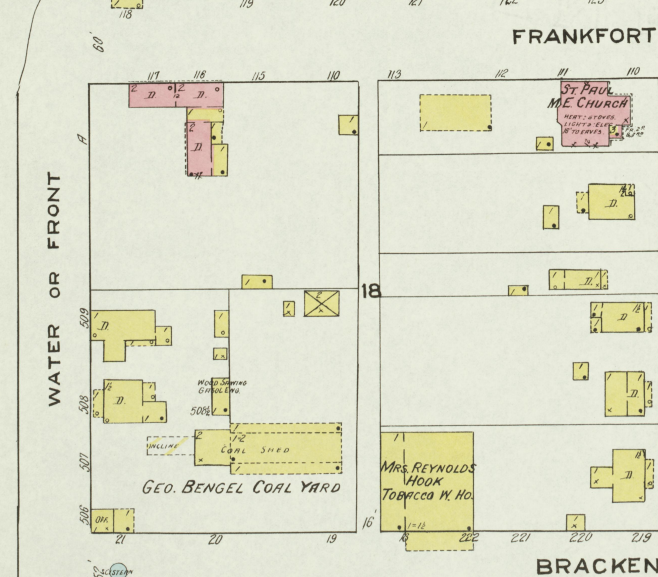
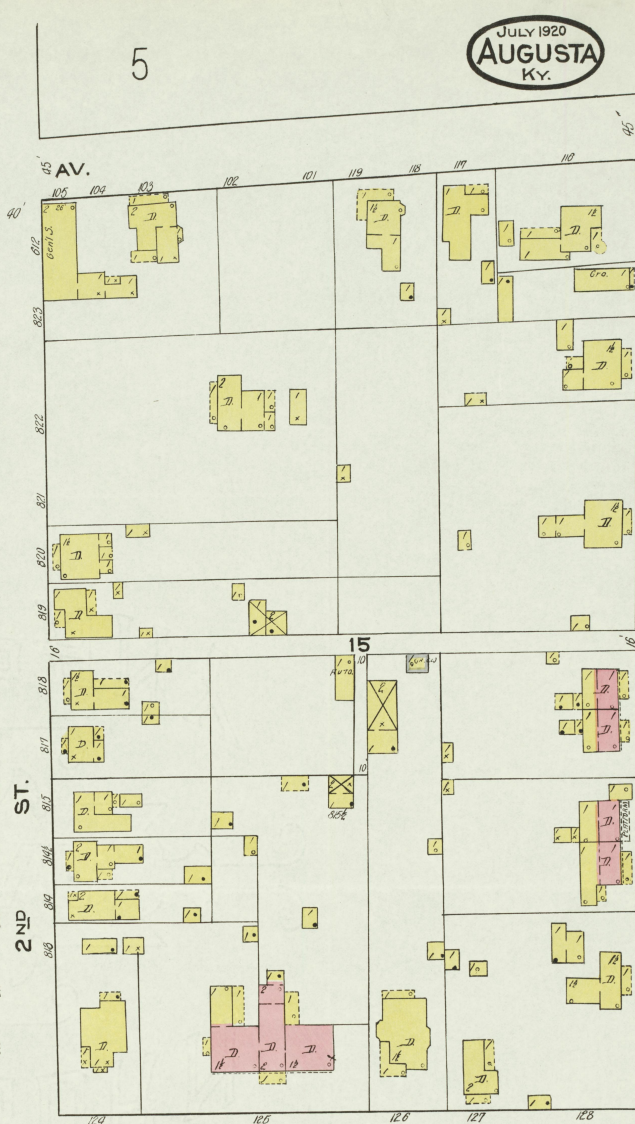
CUSTOM

6



JULY 1920  
AUGUSTA  
KY.

4



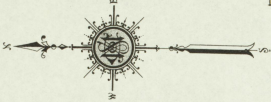
3

JULY 1920  
AUGUSTA  
KY.

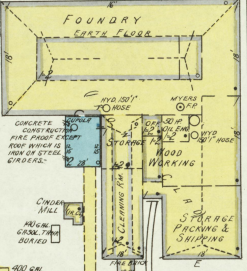
53

N O E X P O S U R E

65' TO 1 STY FR DWG.  
THE PLANTERS WAREHOUSE CO  
TOBACCO W HO.  
ROOF SUPPORTED BY WOOD POSTS



N O E X P O S U R E  
N O E X P O S U R E



THE AUGUSTA STOVE FOUNDRY  
WREST & WAGON WRESTING, NEWMAN COOK, FOUNDRY,  
WOODWORK, 300 T. HIDE, 177A TRAYING, 1000 LBS  
MACH. HUNTS, HERT-STOVES, LIGHT OIL LAMPS, PUMP, CURVE  
& CURVE.

PLEASANT AV.

DRIVEWAY

THE G. W. MONEYHON COMPANY  
LUMBER YARD

LUMBER W HO.

LUMBER  
WORKS W HO.

Scale of Feet  
0 10 20 30 40 50 100 150

Copyright 1920 by the Sanborn Map Co

2ND ST.

BOWMAN ALLEY

FACTORY ALLEY

REESE ALLEY

SEMINARY AV.

HAMILTON AV.

J. M. COOK & SON  
TOBACCO W HO.

FARMERS' WAREHOUSE CO  
TOBACCO W HO.  
STEEL FRAME, WOOD SIDING,  
WOOD ROOF BOARDS.

T. A. WELDON  
TOBACCO W HO.

STANDARD OIL CO.

THE F. A. NEIDER CO.  
MFRS. METAL TRIMMINGS FOR  
CHAIRSES & AUTOMOBILES AND  
UPHOLSTERS BUTTONS.  
MACH. WRESTING - WRESTING CLOCK, 1 SYSTEM,  
3 WHEEL MACHINES - WRESTING, 1 SYSTEM,  
LIGHTS, ELEC. TRUCK, ELEC. PLANT, 1000  
POUNDS OF SHINGLES, BARRELS AND BILLS OF MATERIALS.

MAIN FACTORY  
ROOF SUPPORTED BY STEEL TRUSSES

W HO.

GEN'L W HO.  
(No. 61)

G. & D. A.  
W HO.

4

ST.

3RD ST.

C. & O. R. R.

7

6

BRACKEN

JULY 1920  
AUGUSTA  
KY.

3

ST.

3RD

ST. OR MILL

5TH

VACANT HILLSIDE

55

ELIZABETH

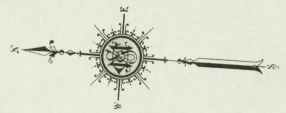
4TH

9

11

UPPER

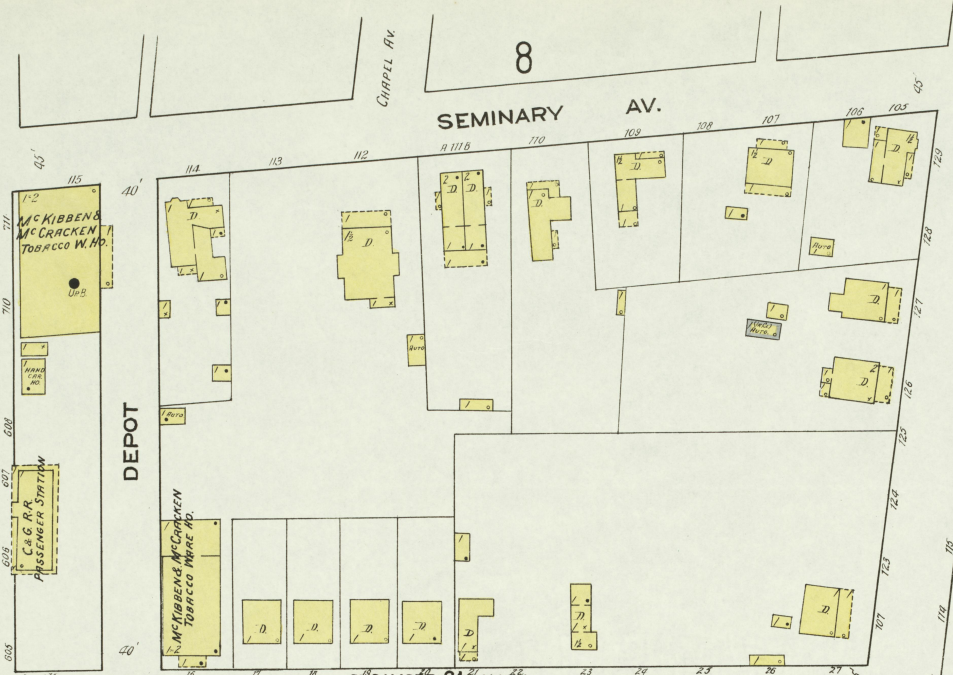
1



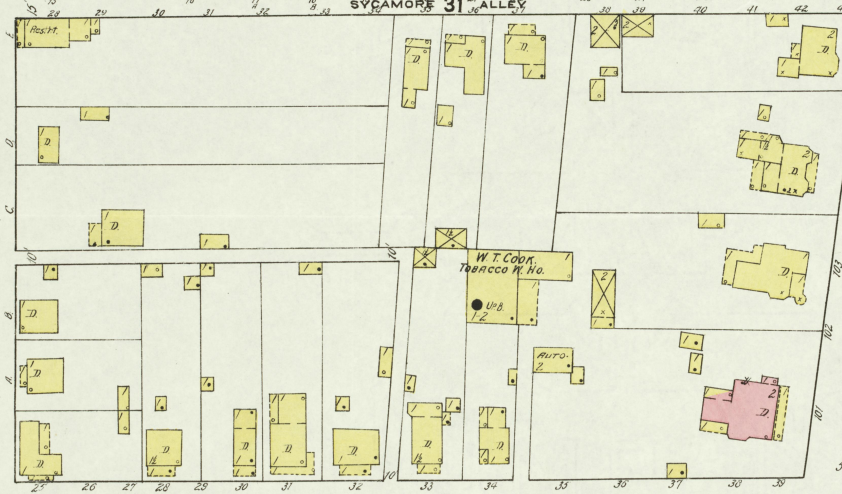
Scale of Feet.  
0 50 100 150  
Copyright 1920 by the Sanborn Map Co.



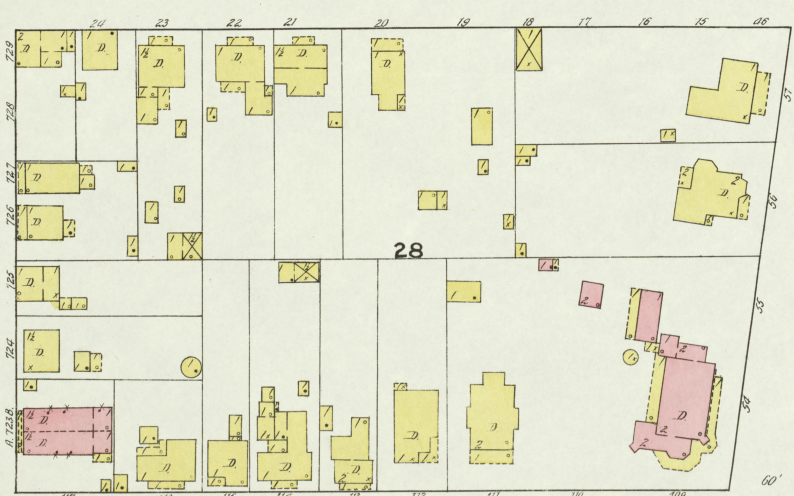
SEMINARY AV.



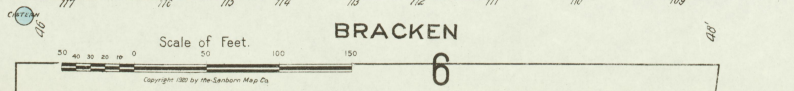
SYCAMORE ALLEY



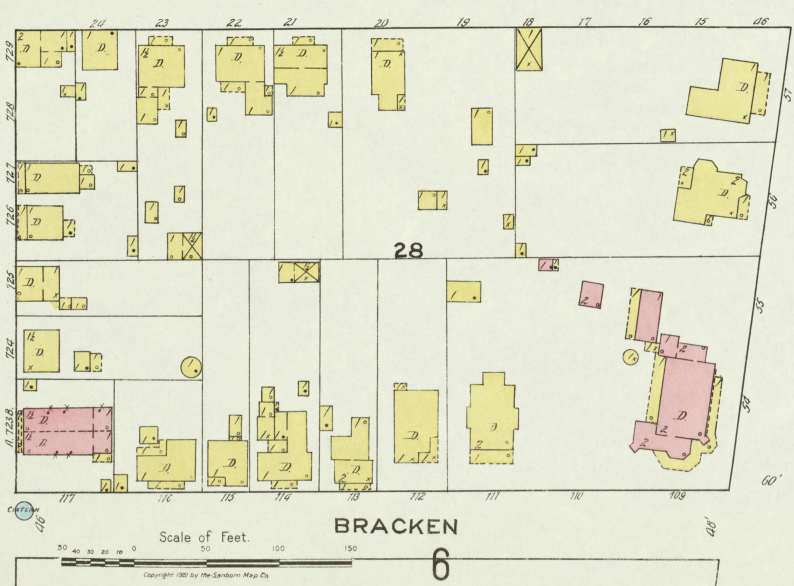
FRANKFORT AV.



BRACKEN



3RD ST.



4TH ST. OR MILL

