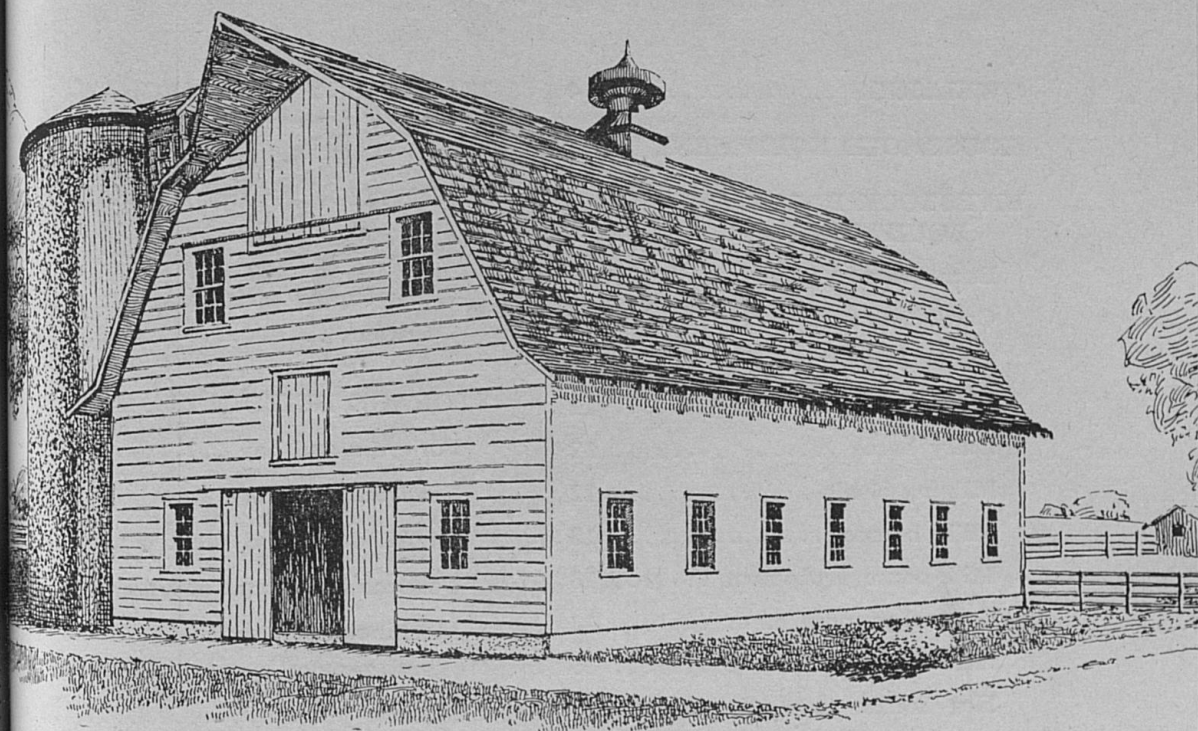


Farm Building Plans



Circular 397

UNIVERSITY OF KENTUCKY

College of Agriculture and Home Economics

Extension Division

Thomas P. Cooper, *Dean and Director*

CONTENTS

	Page
DWELLINGS	4
HOUSEHOLD EQUIPMENT ..	5
LIVESTOCK BARNs AND EQUIPMENT	6
Barn framing	9
Cattle barns	10
Cattle equipment	11
Farm gates and guards	11
Dairy barns	12
Milking sheds	12
Milk houses	13
Milk-house equipment	13
General-purpose barns	13
Heifer barns	15
Hog houses	15
Hog equipment	16
Horse or mule barns	16
Poultry houses	16
Poultry equipment	17
Sheep barns	18
Sheep equipment	18
MACHINERY AND MECHAN- ICAL EQUIPMENT	19
SANITATION	19
Sewage disposal	19
Water supply and storage systems	19
STORAGE BUILDINGS	20
For grain and hay	20
For fruits and vegetables	21
Smokehouses and meat storage	21
Tobacco barns and equipment.	22
Machine sheds, shops, and garages	22
Manure pit	23
Lime shed	23
MISCELLANEOUS STRUCTURES	23
MISCELLANEOUS EQUIPMENT	23

This circular is a revision of Circular 111.

List of Farm Building Plans

By the STAFF of the
AGRICULTURAL ENGINEERING SECTION

Page
19
19
19
19
20
20
21
21
22
22
23
23
23

IN THIS CIRCULAR, the plans marked "Ky." were prepared by members of the Agricultural Engineering Section. The plans embody suggestions of Kentucky farmers and the advice of specialists in every line concerned. Those marked "M.W." and "U.S." were selected especially for use in Kentucky from designs prepared cooperatively by a number of agricultural colleges and the U. S. Department of Agriculture. In this cooperation, the experience of many individuals has been used in making available to the states these excellent plans, at a much lower cost than if prepared by one state.

The Extension Division of the College of Agriculture and Home Economics has published a number of booklets and folders containing additional information on various types of buildings and equipment, a list of which will be found on pages 23 and 24 of this circular. All the publications listed are for free distribution, except "Plans for Dwellings and Farm Buildings in Kentucky," for which there is a charge of 15 cents. The illustrations in the latter booklet will help in selecting a plan and in visualizing the appearance of the finished structure.

23
23

If a plan is needed for a type of building not found in this catalog, write for information. All correspondence pertaining to this service should be addressed to the Agricultural Engineering Section, College of Agriculture and Home Economics, Lexington.

This circular is a catalog of plans for farm buildings and equipment suitable for use in Kentucky. For each building or piece of equipment, a set of detailed drawings has been prepared. Blueprints of the plans may be obtained from the Agricultural Engineering Section, College of Agriculture and Home Economics, Lexington, for a charge of 10 cents a sheet to cover cost of labor in making them. *Order from the list by name and number of plan and send remittance with the order.*

AVOID MISTAKES BY BUILDING FROM CAREFULLY PREPARED PLANS

1. Select the building site carefully. Consider convenience in its use.
2. Decide on the number of persons, or animals, and the amounts of feed and equipment to be housed.
3. Consider the future requirements of the structure.
4. Consult your county agent or home demonstration agent, local lumber dealers and builders regarding plans and materials.
5. Write the Agricultural Engineering Section of the College of Agriculture and Home Economics, Lexington, for plans and information.
6. Talk with farmers who have similar buildings and examine the buildings for ideas.
7. Decide upon the interior equipment to be used and get plans and instructions from the manufacturers for its installation.
8. Get or prepare the plans to be used.
9. Engage the services of a competent builder.
10. Remember that good plans aid in determining the exact size and arrangement of the building and equipment, prevent expensive mistakes, and save labor and building costs.

DWELLINGS

- Ky. 11.71-1.** Three sheets. One-story frame, 26'x28'. Kitchen, dining room, living room, 1 bedroom, bath, 2 closets, 2 small porches. Price 30c
- Ky. 11.71-2.** Five sheets. One-story brick veneer, 28'x30'. Living room, combination kitchen and dining room, 2 bedrooms, bath, 2 closets, screened-in back porch, stairway to cellar, and front porch. Price 50c
- Ky. 11.71-2B.** Five sheets. Same floor plan as Ky. 11.71-2 but has a glassed-in back porch and a larger front porch with shed roof. Price 50c
- Ky. 11.71-3.** Five sheets. Two-story frame, 28'x28'. Basement: Coal bin, laundry, place for warm-air furnace. First floor: living room, dining room, kitchen, washroom, office, pantry, rear and front porches. Second floor: 3 bedrooms, bath, and 3 closets. Price 50c
- Ky. 11.71-4.** Two sheets. One-story frame, 26'x26'. Basement, living room, kitchen, bath, bedroom, and 2 closets. Price 20c

Ky. 11.7
men
2 pc

Ky. 11.7
room

Ky. 11.7
living
2 cl

Ky. 11.7
dine

Ky. 11.7
room

Ky. 11.7
living
one

Ky. 11.
room
and

Ky. 11.
two
fas
flo

M.W. 7
bec

M.W.
flo
Se

M.W. 7
flo
Se

M.W.
flo
Se

M.W.
liv
or

M.W.
38
ro
P

Ky. 1

Ky. 1
P

Ky. 1

Ky. 1

- Ky. 11.71-5. Three sheets. One-story frame, 26'x34' with an ell 12'x12'. Basement, kitchen, dinette, living room, hall, 2 bedrooms, bath, 5 closets, and 2 porches. Price 30c
- Ky. 11.71-6. Three sheets. One-story frame, 24'x40'. Living room, dining room, kitchen, 2 bedrooms, bath, 3 closets, and back porch. Price 30c
- Ky. 11.71-7. Three sheets. One and one-half story frame, 24'x28'. First floor: living room, combination kitchen and dining nook, bath, 2 bedrooms, and 2 closets. Second floor: 2 bedrooms and storage space. Price 30c
- Ky. 11.71-8. Three sheets. One-story "boxed" house, 30'x34'. Living room, dinette, kitchen, bath, 4 closets, and 3 bedrooms. Price 30c
- Ky. 11.71-9. Three sheets. One-story frame, 26'x42'8". First floor: living room, dining room, kitchen, bath, 2 bedrooms and 5 closets. Price 30c
- Ky. 11.71-10. Four sheets. One and one-half story frame, 34'x38'. First floor: living room, dining room, kitchen, bath, 2 bedrooms, and 8 closets. Second floor: bath, 2 bedrooms, and 2 closets. Price 40c
- Ky. 11.71-11. Three sheets. Two-story stone, 24'x29'6". First floor: living room, combination kitchen and dining room, workroom, laundry, boiler and coal room. Second floor: bath, 4 bedrooms, and 5 closets. Price 30c
- Ky. 11.71-12. Four sheets. Two-story brick veneer with basement 25'x35' with two 12'8"x20' wings. First floor: living room, dining room, kitchen, breakfast nook, laundry, two-piece bath, and glassed-in sunporch. Second floor: bath, sewing room, 3 bedrooms, and 3 closets. Price 40c
- M.W. 71121. Two sheets. One-story frame, 20'x20'. Living room, kitchen, bedroom, and closet. Price 20c
- M.W. 71161. Four sheets. Two-story frame, 34'x36' with basement. First floor: living room, dining room, kitchen, office, washroom, and 3 closets. Second floor: 3 bedrooms, bath, and 9 closets. Price 40c
- M.W. 71172. Four sheets. Dutch colonial frame with basement, 34'x28'. First floor: living room, dining room, office, kitchen, washroom, and closet. Second floor: 4 bedrooms, bath, and 8 closets. Price 40c
- M.W. 71173. Four sheets. Two-story frame with basement, 32'x28'. First floor: living room, dining room, kitchen, washroom, office, and 2 closets. Second floor: 4 bedrooms, bath, and 5 closets. Price 40c
- M.W. 71174. Five sheets. Two-story frame with basement 34'x28'. First floor: living room, dining room, kitchen, washroom, office, and 2 closets. Second floor: 4 bedrooms, bath, and 5 closets. Price 50c
- M.W. 71181. Four sheets. Two-story brick veneer with basement, 34'11"x38'7". First floor: living room, dining room, kitchen, bedroom, bath, sun-room and four closets. Second floor: 4 bedrooms, bath, and 8 closets. Price 40c

HOUSEHOLD EQUIPMENT

- Ky. 11.712-1. One sheet. Food laboratory desk for schools. Price 10c
- Ky. 11.712-3. One sheet. A work table and a push table for the kitchen. Price 10c
- Ky. 11.712-5. One sheet. Broom holder. Price 10c
- Ky. 11.712-6. One sheet. Footstools. Three designs. Price 10c

- Ky. 11.712-7. One sheet. Shipping box for canned goods. Price 10c
- Ky. 11.712-8. One sheet. Homemade dumb waiter. Price 10c
- Ky. 11.712-9. One sheet. Concrete incinerator. Price 10c
- Ky. 11.712-10. One sheet. Youth's study table. Price 10c
- Ky. 11.712-11. One sheet. Fireplaces. Price 10c
- Ky. 11.712-12. One sheet. Hoods for stove. Price 10c
- Ky. 11.712-13. One sheet. Camp stoves, brick, concrete, and stone. Price 10c
- Ky. 11.712-14. One sheet. Bushel crate, magazine or curio rack, knife ströpper. Price 10c
- Ky. 11.712-15. Three sheets. Built-in kitchen cabinets. Price 30c
- Ky. 11.712-16. One sheet. Book shelves. Price 10c
- Ky. 11.712-17. One sheet. Footstool; fabric or reed top. Price 10c
- Ky. 11.712-18. One sheet. Log picnic table. Price 10c
- Ky. 11.712-19. One sheet. Plank picnic table. Price 10c
- Ky. 11.712-20. Three sheets. Cabinet details for remodeling kitchen. Price 30c

LIVESTOCK BARNES AND EQUIPMENT

Essential Points to Consider in Selecting a Plan For a Livestock Barn

1. *The size and design* of the structure depend upon the number of animals and amount of feed and equipment that will be housed.

2. *Convenience* is the next important consideration as it is a factor in keeping to a minimum the labor and equipment needed to care for the animals and perform other operations.

3. *Cost* should be in keeping with the size and income-producing capacity of the farm. In order to provide an adequate, durable building at a minimum cost, careful consideration should be given to selection of materials and details of construction. Application of engineering principles aids in determining the correct sizes and grades of materials to be used and how they should be placed to make a strong, durable, economical structure. The strictest economy in every detail is necessary, but an attempt to economize too much may result in a building that will prove expensive from excessive repair and upkeep costs.

4. *Appearance*. By using carefully prepared plans, the essential features may be embodied in a structure of pleasing appearance, of

which one may be proud and which will influence the farmer to greater efforts in beautifying the farmstead. The appearance of farm buildings too often is not considered.

SPACE REQUIREMENTS FOR FARM ANIMALS

Cattle

- Baby beef, floor area per animal, 35 sq. ft.
- Steer, floor area per animal, 40 to 50 sq. ft.
- Steer, length of feed rack per animal, 2'
- Steer, double box stall, 10'x12'
- Steer, tie stall, 5'x8'

Cows

- Milking stall, width 3'6" to 4'0", length 4'6" to 5'0"
- Box stall, single, 8'x10'; double, 10'x12'

Hogs

- Farrowing pen, per sow, 6'x8' to 8'x8'
- Feeding floor, per hog, 15 sq. ft.

Horses

- Box stall, single, 10'x12'; double, 12' 12'
- Tie stall, single, width 4½ to 5', length 9'; double, width 9' to 10', length 9'

Allow 15 feet from front of manger to back of litter alley for tie stalls.

Chickens

- Laying house, per bird, 3½ to 4 sq. ft.
- Brooder house, 350 chicks, 120 sq. ft.

Sheep

- Lambing pen, floor area, per ewe, 12 to 16 sq. ft.
- Length of feed rack, per animal, 15 to 18 inches.

STORAGE SPACE REQUIRED PER COW PER YEAR

Based on feeding period of 200 days*

Item	Pounds required daily	Tons required per year	Cu. ft. of storage space for one year's supply	
			Loose	In bales ¹
Grain	8 to 12	¼ to 1½	75 to 113	
Hay	10 to 15	1 to 1½	525 to 788	80 to 250
Straw	5 to 10	½ to 1	275 to 550	100 to 250
Sawdust	10 to 15	1 to 1½	150 to 225	
Shavings	5 to 10	½ to 1		80 to 160

* Nebraska Experiment Station, Circular No. 6, Page 15.
¹ Baled hay weighs 12 to 25 pounds per cu. ft.

TO ESTIMATE GRAIN AND HAY

To find the number of bushels of grain or shelled corn in a bin, divide the content of the bin in cubic feet by 1.25.

To find the number of bushels of husked ear corn in a crib, divide the content of the crib in cubic feet by 2.5. No standard has been adopted for the cubical content of a bushel of unshucked ear corn. It varies from 3 to 3.5 cubic feet per bushel.

To find the number of tons of loose hay in a mow, multiply the length by the width by the height (all in feet) and divide by 450 to 640, depending on the kind of hay and how long it has been in the mow. (See table below.)

To find the number of tons of hay in a stack, multiply the over-throw (the distance from the ground on one side over the top of the stack to the ground on the other side) by the length by the width all in feet; multiply by 3; divide by 10 and then divide by the number of cubic feet of hay per ton. (See table below.) For detailed information on measuring hay in stacks see Bureau of Plant Industry, U. S. D. A., Circular No. 131.

Number of cubic feet to a ton of hay

Kind of hay	When hay has been in stack or mow	
	30 to 90 days	over 90 days
Alfalfa	485	470
Timothy and mixed.....	640	625
Wild	600	450

Hay storage capacity and safe loads for loft floors
of gambrel-roof barns

Width of barn	Tons of loose hay per foot of length*	Permissible load per sq. ft. of floor
16'	.16	133
20'	.25	68
22'	.30	104
24'	.32	80
30'	.55	139
32'	.73	104
34'	.83	92
36'	.95	142

* Based on 500 cu. ft. per ton

SILOS

The silo is an important factor on many farms in feeding livestock for milk and beef production. The type of silo to build depends upon the investment warranted and the durability desired. Silos may be classified as above-ground, upright, and below-ground, pit or trench, either of which may be built for continued or temporary use.

To prevent silage from spoiling the silo should have the following essential features.

1. The area of the cross section should be proportional to the size of the herd and the weight of silage to be fed daily. It should be of a size that permits a layer of silage 2 or 3 inches in depth to be fed daily.

2. The walls should be airtight.

3. The walls should be smooth and straight to permit free settling and packing of silage to avoid air pockets.

4. The walls should be of sufficient strength to withstand lateral pressure exerted by the silage without cracking or bulging. Molasses-alfalfa silage exerts twice as much pressure against the walls as corn silage.

Amount of silage, 2" in depth, to be removed daily to avoid spoilage
Weights based on 40 pounds of silage per cubic foot

Inside diameter of silo	Volume per ft. of depth	Amount to be removed		
		Daily	For feeding period of	
	cu. ft.	lb.	180 days	240 days
			tons	tons
10	78.5	524	47	63
11	95.0	634	57	76
12	113.1	754	68	90
14	153.9	1,027	92	123
16	201.0	1,340	120	161
18	254.5	1,697	153	203
20	314.2	2,095	188	251

Barn Framing

Ky. 11.7200-1. One sheet. Cross-section details for braced-rafter or wing-joint framing, gambrel-roof barns ranging in width from 16' to 36'. Price 10c

Ky. 11.7200-2. One sheet. Standard plan for 34' braced-rafter or wing-joint frame, self-supporting gambrel roof and outlet ventilator shafts. Price 10c

Ky. 11.7200-3. One sheet. Standard plan for Shawver truss for self-supporting gambrel roof. Widths 30' to 42'. Price 10c

- Ky. 11.7200-4.** One sheet. Gambrel roof end bracing. Price 10c
- Ky. 11.7200-5.** One sheet. Cross-section and side-framing details of a gambrel roof using self-supporting braced rafters, for 36' span, side walls sheathed with vertical boxing. Price 10c
- Ky. 11.7200-6.** One sheet. Cross section and side elevation showing details of framing a gambrel-roof barn using Shawver trusses of 36' span. Price 10c
- Ky. 11.7200-7.** One sheet. Framing for gable roof, 36' span. Price 10c
- Ky. 11.7200-8.** One sheet. Cross section, 40' braced rafter gambrel roof. Price 10c
- Ky. 11.7200-9.** One sheet. Framing details of gambrel-roof barn with outside feed racks. Price 10c
- M.W. 72001.** One sheet. Gambrel-roof truss. Iowa type. Details for 32', 34', and 36' spans. Distance between trusses 12 ft. Price 10c
- M.W. 72002.** One sheet. Shawver roof truss. Details for 32', 34', and 36' spans. Distance between trusses 12 ft. Price 10c
- M.W. 72003.** One sheet. Gothic-roof rafters. Laminated rafter construction, spacing 2 ft. For spans 32', 34', and 36'. Price 10c
- M.W. 72004.** One sheet. Gothic-roof rafters. Sawed-rafter construction, rafter spacing 2 feet. Details for 32', 34', and 36' barn widths. Price 10c

Cattle Barns

- Ky. 11.724-1.** Three sheets. Two-carload feeding barn, 34'x60'. Feeding bunkers in center with 14' feeding space on each side; a feed storage room and 2 silos; concrete foundation, frame walls; 12' studding; loft space and self-supporting gambrel roof. Price 30c
- Ky. 11.724-2.** Five sheets. Two-carload feeding barn, 36'x76'. Same as 11.724-1, except that it has an open shed at one end. Price 50c
- Ky. 11.724-3.** Four sheets. Cattle feeding barn, 36'x48'. Gambrel roof. Price 40c
- Ky. 11.724-4.** Twelve sheets. Fancy beef-cattle L-shaped barn; main barn 36'x108', wing 24'x100'. Main barn has 7 double box stalls, 3 single box stalls, 6 double tie stalls for nurse cows, office, wash room for cattle, wash room for herdsmen, feed room, grain elevator and dump, 2 silos, dairy room, loft for storage of hay and grain. The wing has 9 double and 1 single tie stalls for young steers, feeding pens, dairy stable for milking 4 cows at a time, and loft space for storage of hay, bedding and grain. Shows arrangement of the outdoor pens and stock watering tank. Price \$1.20
- Ky. 11.724-5.** One sheet. Cattle shed, "lean-to," 20'x68' with L 20'x24'. Gable roof; open front; drop siding, concrete foundation and footings. Shows trough for lot feeding. Trough can be built against wall for range feeding. Bill of materials. Price 10c
- M.W. 72421.** Three sheets. Beef-cattle barn, 36'x48'. Gambrel roof, braced-rafter construction; concrete foundation and footings; houses 25 to 30 cattle; hay bunkers along wall, mangers in center separated by feed alley; 4'x8' concrete water tank at end of feed alley. Price 30c

M.W. 72431. Three sheets. Beef-cattle barn, 52'x72'. Pole-type barn, gable roof; hay storage in center, space for cattle on one side and 6 box stalls with grain bin and feed alley on other side. Price 30c

Cattle Equipment

Ky. 11.770-1. One sheet. Stock lifter for cattle. Price 10c

Ky. 11.77011-1. One sheet. Portable calf-stanchions. Price 10c

Ky. 11.77011-2. One sheet. Homemade wooden cow-stanchions. Price 10c

Ky. 11.77013-1. One sheet. Ensilage feeding car. Price 10c

Ky. 11.772-11. One sheet. Cattle, sheep, and hog loading chute for single and double-decked trucks. Price 10c

Ky. 11.772-13. One sheet. Portable combination hay and grain feed rack for cows. Price 10c

Ky. 11.772-14. One sheet. Mineral self-feeder for cattle. Price 10c

Ky. 11.772-17. One sheet. Dehorning stocks and pen. Price 10c

Ky. 11.775-2. Two sheets. Bull pen and breeding rack. Price 20c

Ky. 11.775-5. One sheet. Four-pen bull-shed. Size 18'x40'. Price 10c

M.W. 77201. One sheet. Circular concrete stock tank, diameter 12', depth 1'8"; 6" concrete pavement, 6' wide, around tank; overflow pipe. Construction details of forms. Price 10c

M.W. 77202. One sheet. Rectangular concrete stock tank 4'x8'x2½'; inside of walls sloped to relieve pressure from freezing. Construction details of forms. Price 10c

M.W. 77411. One sheet. Grain bunker for cattle, 4'x12'. Height of top of bunker 2'6". Price 10c

M.W. 77412. One sheet. Combination grain bunker and hay rack, 4'x12'. Height of top of bunker 2'6"; height of rack 3'. Price 10c

M.W. 77413. One sheet. Grain self-feeder for cattle. Gable roof, doors for filling in roof; accelerator; capacity ranging from 170 to 345 bu. depending upon length and height. Movable. Price 10c

M.W. 77461. One sheet. Cattle stocks 4½'x8½'. A device to hold cattle when treating injured animals, trimming hoofs, dehorning, etc.; heavy timber construction mounted on a concrete base. Price 10c

M.W. 77901. Two sheets. Bull pen and shed. Shed 10'x12', frame construction, shed roof; details for breeding chute and various types of fence construction. Price 20c

Farm Gates and Guards

Ky. 11.7762-2. One sheet. Farm gates, 12 ft. Price 10c

Ky. 11.7762-3. One sheet. Cattle-guard auto entrance, 12 ft. Combination pit-gate and animal entrance. Price 10c

Dairy Barns

- Ky. 11.723-1.** One sheet. Cross sections of up-to-date dairy barn floors for barn widths of 32', 34', and 36'. Price 10c
- Ky. 11.723-2.** Five sheets. Size 36'x68'. Has concrete foundation and floors, frame structure with self-supporting gambrel roof, loft space, 20 cow stalls facing in, calf pen, milk room, 2 cow pens, feed room, and silo. Price 50c
- Ky. 11.723-3.** Four sheets. Size 34'x38'. Has concrete foundation and floors, 18 cow stalls, feed room, and silo. A one-story gable room, frame structure without a loft. Price 40c
- Ky. 11.723-6.** Four sheets. Size 36'x83'. Bank barn for 36 cows, bull pen and calf pen, gambrel roof. Price 40c
- Ky. 11.723-7.** Four sheets. Size 36'x60'. Has 16 cow stalls, feed room, milk room, 2 calf pens, bull pen, cow pen, hay loft, concrete foundation and floor, and self-supporting gambrel roof. Price 40c
- Ky. 11.723-8A.** Two sheets. Size 18'x72'. Ten cow stalls, calf pen, feed room, milk room, shed roof. Cows face out. Shows how to make this barn into a gable roof, one-story barn having two rows of cow stalls. Price 20c
- Ky. 11.723-8B.** One sheet. Same as 11.723-8A. Cows face in. Price 10c
- Ky. 11.723-10.** Six sheets. Size 34'x60'. Braced-rafter gambrel roof. Cows face out or in, 25 cow stalls, feed room and storage for grain and hay in loft. Price 60c
- M.W. 72301.** Seven sheets. Braced-rafter, gambrel-roof barn, 32'x80'. "Face-in" arrangement, 4-ft. feed alley; 26 stanchions, 3 cow pens, 1 calf pen, 1 bull pen, 1 feed room, concrete floors and foundations; frame construction with details for alternative masonry wall; (3 detail sheets, also to be used for plans 72311 and 72321.) Price 70c
- M.W. 72311.** Seven sheets. Braced-rafter gambrel-roof barn, 34'x64'. "Face out" arrangement; 7-ft. driveway through center; 23 stanchions, 2 cow pens and 1 feed room, concrete floors and foundations; frame construction with details for alternative masonry wall; 4 optional floor plans (3 detail sheets for 72301, 72311, 72321.) Price 70c
- M.W. 72321.** Seven sheets. Braced-rafter gambrel-roof barn, 36'x80'. "Face-out" arrangement; 8-ft. driveway; 28 stanchions, 2 calf pens, 1 cow pen, 1 bull pen, feed room, 2 bins and silo at side of barn; concrete floors and foundations; frame construction with details for alternative masonry wall; (3 detail sheets for 72301, 72311, 72321). Two optional floor plans for the dairy-type barn and 5 suggested floor plans for the "cow pen" type supplied with these plans. Price 70c

Milking Sheds

- M.W. 75221.** Four sheets. Milking barn, 20'x40'. Frame construction, gable roof, concrete foundation and floor; "walk through" type, six stalls and an attached milk house separated by 6-ft. passage; for 30 to 60 cows. Price 40c

Milk Houses

- Ky. 11.752-1. Two sheets. Milk house, 20'x26', concrete or clay block. Price 20c
- Ky. 11.752-2. One sheet. Milk house, 14'x26', concrete foundation extending 4 ft. above concrete floor; upper walls and roof of frame construction. Price 10c
- Ky. 11.752-3. One sheet. Milk house 10'x12', one room. Price 10c
- Ky. 11.752-4A. Two sheets. Two-room milk house, 12'x14'. Frame construction; designed to meet requirements of model milk ordinance. Including bill of materials. Price 20c
- Ky. 11.752-4B. Two sheets. Two-room milk house, 12'x14'. Same as 11.752-4A. Concrete block construction. Including bill of materials. Price 20c
- U.S. 11.752-5. Three sheets. Milk house, 18'x26', frame construction, boiler room, wash room, and milk room. Price 30c
- U.S. 11.752-6. Three sheets. Milk house, 14'x24' frame construction, boiler room, wash room, milk room. Price 30c
- Ky. 11.752-7. One sheet. One-room stone milk house, 12'x14'. Price 10c
- M.W. 75201. One sheet. Milk house, 7'x7'. One room; concrete foundation and floor; frame construction; shed roof; concrete cooling vat for four 10-gallon cans; window on each side. Price 10c
- M.W. 75202. One sheet. Milk house, 11'x11'. One room; concrete or tile block construction; concrete foundation and floor; gable roof with ventilator; concrete cooling tank; windows on each side. Price 10c
- M.W. 75204. Three sheets. Farm bottling plant, 14'x24'. Work room for bottling milk, storage room and refrigerator; boiler and fuel in an adjoining room; masonry construction of either concrete or hollow tile building blocks; concrete foundation and floors; gable roof with ventilator. Details for alternative frame wall construction. Price 30c

Milk-House Equipment

- Ky. 11.7521-1. One sheet. Milk-bottle sterilizing box, 3'4"x6'5", capacity 24 dozen bottles. Price 10c
- Ky. 11.7521-2. One sheet. Concrete milk-cooling tank, 38"x10'. Price 10c
- Ky. 11.7521-3. One sheet. Insulated refrigeration box, 3'2"x4'6"x38", made of wood and metal. Space for four 10-gal. cans and a block of ice or refrigeration unit. Price 10c
- Ky. 11.7521-4. One sheet. Milk-can drying rack. Price 10c
- Ky. 11.7521-5. One sheet. Walk-in ice refrigerator. Price 10c

General-Purpose Barns

- Ky. 11.721-1. Four sheets. Size 36'x48'. Space for 5 horses, 6 cows, feed alley and feeding space at one end. A bank barn having a driveway into loft, concrete foundation and walls for ground floor. Loft is frame structure, 12-ft. studding, self-supporting gambrel roof. Price 40c

- Ky. 11.721-4.** Three sheets. Size 30'x42'. Space for three horses, five cows, one calf pen, harness room, extra space for storage, concrete foundation, gambrel roof and large hay loft. Price 30c
- Ky. 11.721-5.** Four sheets. Size 36'x82'. Space for 5 tie stalls, 2 horse box stalls, one calf pen, one cow pen, harness room, 16 cow stalls, feed room, milk room, loft space and a self-supporting gambrel roof. Price 40c
- Ky. 11.721-6.** Four sheets. Size 36'x52'. Space for 4 box stalls, gear room, feed room, 10 cow stalls, 10' driveway across barn, loft space and self-supporting gambrel roof. Price 40c
- Ky. 11.721-7.** Four sheets. Size 34'x75'. A combination of mule and cattle-feeding barn. Has 7 box stalls, gear room, rat-proof corn crib, space for one carload of steers, hay storage space, concrete foundation and a self-supporting gambrel roof. Price 40c
- Ky. 11.721-8.** Three sheets. Size 32'x62'. Space for 7 box stalls, one calf pen, harness room, feed room, 5 cow stalls, loft space and a gable roof. Price 30c
- Ky. 11.721-9.** Five sheets. Size 36'x56'. Space for 4 tie stalls, bull pen, cow pen, 18 cow stalls, feed room, loft space and self-supporting gambrel roof. Price 50c
- Ky. 11.721-10.** Five sheets. Size 36'x70'. A combination cow and mule barn. Space for 8 cow stalls, one calf pen, one cow pen, 4 tie stalls for mules, one box stall, tool room, feed room, hay storage space, and gambrel roof. Price 50c
- Ky. 11.721-11.** Four sheets. Size 36'x60'. Space for 14 cow stalls, 5 single mule box stalls, harness room, feed room, dairy room, loft space, concrete foundation, and self-supporting gambrel roof. A 34' cross section can be furnished for this barn so as to make a barn 34'x60'. Price 40c
- Ky. 11.721-12.** Two sheets. Shows how to convert part of a standard 40'x72' air-curing tobacco barn into a dairy barn. Plan provides 16 cow stalls and a feed room. Price 20c
- Ky. 11.721-13.** Three sheets. Size 26'x32'. Space for 4 double box stalls, 2 cow stalls, feed and harness room, loft hay storage, gambrel roof. Alternate floor plans are shown. Alternate No. 1. Size 32'x44', provides space for 2 double box stalls or feed rooms, six cow stalls, space for 16 head of cattle and 10' driveway through center. Alternate No. 2. Size 32'x50', provides 2 double box stalls or feed rooms, six cow stalls and space for 16 head of cattle and 10' driveway through center. Price 30c
- Ky. 11.721-14.** One sheet. Size 16'x32'. Provides space for 2 single box stalls; two cow stalls, feed and harness room, passway 6'x16', loft space, either gambrel or gable roof. Price 10c
- Ky. 11.721-15.** One sheet. Size 22'x32'. Provides space for two single box stalls; 3 cow stalls, feed and harness rooms; passway 6'x22', loft space, either gambrel or gable roof. Price 10c
- M.W. 72101.** Five sheets. Size 32'x32'. Gambrel roof of braced-rafter construction; 4 grain bins, 2 double horse stalls, 2 cow stalls, 1 box stall; concrete foundation and concrete floor in bins, box stall and cow stalls; optional floor plan with 4 box stalls, 2 cow stalls, a feed room and a harness room. Price 50c
- M.W. 72102.** Two sheets. Size 18'x32'. Frame construction; one story; 4 cow stalls, 2 double horse tie stalls, concrete foundation and floors; height to plate, rear 6 ft., front 12 ft. Price 20c

M.W. 7
str
bin
ter
Pri

M.W. 7
ro
ag
Pr

Ky. 11
fo

Ky. 11
Pr

Ky. 11
eq

Ky. 11

Ky. 11
gl

Ky. 11
ro

Ky. 11
pe
M
su
ar

Ky. 11
de

M.W.
re
fl
sc

M.W.
st
ti
ro

M.W.
ro
b
t

M.W.
r
a
s

M.W. 72121. Five sheets. Size 36'x64'. Gambrel roof of braced-rafter construction; "face out" arrangement, 10 cow stalls, 8 tie horse stalls, 2 feed bins, 1 harness room, 1 box stall, 1 bull pen; 8-ft. driveway through center; concrete foundation, floor and footings. Six optional floor plans. Price 50c

M.W. 72131. Six sheets. Size 34'x60'. Clay block construction with Gothic roof. Provides space for 2 double and single horse tie stalls; grain storage, milking room, bull pen, 32'x34' space for loose cattle, and hay loft. Price 60c

Heifer Barns

Ky. 11.723-11. One sheet. Size 24'x36'. Gable-roof heifer barn. Provides loft for feed and hay storage. Price 10c

Ky. 11.723-12. One sheet. Same as Ky. 11.723-11 but with gambrel roof. Price 10c

Ky. 11.723-13. One sheet. Size 30'x40'. Gambrel roof, loft space, shown equipped with grain troughs, hay bunkers on outside walls. Price 10c

Hog Houses

Ky. 11.726-1. One sheet. Size 8'x8'. Type A portable house. Price 10c

Ky. 11.726-2. One sheet. Size 8'x8'. Shed-roof portable house. Front with glass windows. Price 10c

Ky. 11.726-9. One sheet. 8'x8' portable house, with sun porch. $\frac{1}{2}$ -span gable roof. Front roof may be opened to add sunshine. Price 10c

Ky. 11.726-10. Four sheets. Community house 25'x90'8". Has 16 farrowing pens, feed room, 3 storage rooms, herdsman's room, and scales room. May be constructed of cement blocks, clay blocks or wood. Has an insulated gable roof. The pens are made of removable steel gate panels arranged so as to divide the house into pens of various sizes. Price 40c

Ky. 11.726-11. One sheet. Size 8'x8'. Shed-roof portable house with drop door substituted for windows. Price 10c

M.W. 72602. One sheet. Modified "A" type house, 6'x8'. Front sloping roof, rear side slopes from ridge to ground; 2'9" front studs, vents in gables, floor, on skids; sides covered with matched lumber placed vertically. Missouri type; one or two pens. Price 10c

M.W. 72611. Three sheets. Single-row farrowing house, 12'x42'. Frame construction; 6 pens all south exposure; concrete floor; removable pen partitions; roof windows; may be enlarged in units of two pens; combination roof. Alternate details for masonry walls. Price 30c

M.W. 72613. Three sheets. Gable-roof house, 24'x42'. Hollow tile walls; gable roof with sunlight windows; concrete floor; 10 farrowing pens; 2 feed bins; feed mixing room, feed alley, east and west exposure. Alternate details for frame walls. Price 30c

M.W. 72621. Two sheets. Straw-loft house 22'x32'. Frame construction, gable roof; loft, concrete wall 4 ft., ceiling height 7 ft.; 7 pens, feed room, 4-ft. alley; windows in walls and ends; concrete floor; pig fenders, horizontal siding for walls. Price 20c

Hog Equipment

- Ky. 11.772-2.** One sheet. Single-hopper self-feeder. Price 10c
- Ky. 11.772-3.** One sheet. Double self-feeder for grain, tankage and minerals. Price 10c
- Ky. 11.772-4.** One sheet. Hurdle. Price 10c
- Ky. 11.772-5.** One sheet. Concrete feeding floor and shipping crate for hogs and sheep. Price 10c
- Ky. 11.772-7.** One sheet. Self-feeder for ear corn. Price 10c
- Ky. 11.772-9.** One sheet. Alfalfa rack. Price 10c
- Ky. 11.772-11.** One sheet. Cattle, sheep and hog loading chute for single and double-decked trucks. Price 10c
- M.W. 77612.** One sheet. Self-feeder, 2'x6'x4'. Two-way feeder with individual troughs and covers; capacity 17 bu. Price 10c
- M.W. 77621.** One sheet. Breeding and ringing crate. Adjustable for breeding, ringing and vaccinating hogs. Price 10c
- M.W. 77631.** One sheet. Portable chute, 3'x12', for loading hogs, sheep and calves; mounted on wheels. Price 10c
- M.W. 77641.** One sheet. Shipping crate 2'x4½'x3'. For shipping hogs or sheep; sliding end-gate, diagonally braced. Price 10c
- M.W. 77661.** One sheet. Concrete wallowing pool. Depth from 8" to 18"; concrete construction; overflow pipe. Price 10c
- M.W. 77671.** One sheet. Pig creep 32" high. To be used in corner of lot against field fence. Price 10c

Horse or Mule Barns

- Ky. 11.722-1.** Three sheets. Frame mule barn, 36'x120'. Seven box stalls, two open feed runways, concrete foundation, 12' studding, loft space and gambrel roof. Price 30c
- Ky. 11.722-2.** Five sheets. Size 36'x48'. Has 6 double box stalls, harness room, corn crib, loft space and self-supporting gambrel roof. Price 50c
- Ky. 11.722-3.** One sheet. Riding horse barn 22'x34'. Feed room; 2 box stalls; tack room. Price 10c
- M.W. 72221.** Three sheets. Size 36'x58'. Gambrel roof of braced-rafter construction; concrete foundation; earth floor; single stalls for 16 horses, box stall, feed room, 2 harness and repair rooms, "face in" arrangement; optional floor plans for a "face out" arrangement. 16 horse, tie stalls. Price 30c

Poultry Houses

- Ky. 11.727-2.** Two sheets. Kentucky 20'x20'. Shed-roof house for 100 birds. Frame construction. Price 20c
- Ky. 11.727-2A.** Three sheets, Kentucky 20'x20' shed roof house for 100 birds. Cement block construction. Price 30c

Ky. 11.
Ky. 11.
per
Ky. 11.
ing
Ky.
Ky. 11.
per
Ky. 11.
10c
Ky. 11.
10c
Ky. 11.
stor
Ky. 11.
for
Ky. 11.
Purdue
Pri
M.W. 7
con
cov
str
ver
M.W. 7
tion
line
l r

Ky. 11.
10c
Ky. 11.
Ky. 11.
Pri
Ky. 11.
Ky. 11.
Ky. 11.
Ky. 11.
Ky. 11.
Ky. 11.
chi
U.S. 11

- Ky. 11.727-3. Two sheets. Brooder house, 10'x12'. Price 20c
- Ky. 11.727-4. One sheet. Shed-roof poultry house, 12'x12', or house for mating pen, for 35 hens. Price 10c
- Ky. 11.727-5. Two sheets. Two-story gable-roof feed house or service building, 20'x24'. Designed to fit between 20-foot units of shed-roof house Ky. 11.727-2. Price 20c
- Ky. 11.727-6. Two sheets. Shed-roof poultry house, 14'x60', divided into 10 pens. Price 20c
- Ky. 11.727-7. One sheet. Shed-roof summer shelter, 10'x10', for pullets. Price 10c
- Ky. 11.727-8. One sheet. Gable-room range shelter, 9'x10', for pullets. Price 10c
- Ky. 11.727-9. Two sheets. 200-hen laying house, 20'x50', with 10'x20' one-story feed room. Same style as Ky. 11.727-2. Price 20c
- Ky. 11.727-10. Three sheets. Two-story laying house, 26'x70', and feed storage for 800 to 1,000 hens. Price 30c
- Ky. 11.7271-13. One sheet. Turkey shelter and corral, 20'x20'. Price 10c
- Purdue 114-A. One sheet. Concrete masonry gable roof poultry house, 30'x30'. Price 10c
- M.W. 72713. Two sheets. Straw-loft poultry house, 20'x20'. Single unit, frame construction, concrete foundation and floor; rear wall and part of ceiling covered with $\frac{1}{2}$ inch insulating board; remainder of ceiling covered with straw on top; doors in front, small windows under roosts in rear wall; vents under eaves in rear wall. Price 20c
- M.W. 72751. Two sheets. Two-story poultry house, 26'x100'. Frame construction, gable roof, outside walls of bevel siding, inside walls and ceiling lined with $\frac{1}{2}$ -inch insulating board; 2 stories, steam heated, 9 pens and 1 room for feed and furnace; 5 ventilating flues. Price 50c

Poultry Equipment

- Ky. 11.7271-1. One sheet. Size 5'x6'. Kentucky turkey brooding coop. Price 10c
- Ky. 11.7271-2. One sheet. Reel mash and grain self-feeder. Price 10c
- Ky. 11.7271-5. One sheet. Grit hopper, watering table, green-feed hopper. Price 10c
- Ky. 11.7271-6. One sheet. Fattening coop and a catching coop. Price 10c
- Ky. 11.7271-7. One sheet. Reel mash-hopper, for small chicks. Price 10c
- Ky. 11.7271-8. One sheet. Metal baby-chick feeder. Price 10c
- Ky. 11.7271-10. One sheet. Reel feeder for baby chicks (wood). Price 10c
- Ky. 11.7271-11. One sheet. Turkey mash-hopper. Price 10c
- Ky. 11.7271-12. One sheet. Battery brooder for 3 to 6, and 6 to 9 week old chicks. Price 10c
- U.S. 11.7271-14. One sheet. Turkey trap-nest battery. Price 10c

- Ky. 11.7271-15.** One sheet. Homemade electric brooder with electric light. Price 10c
- Ky. 11.7271-16.** One sheet. Range self-feeder. Price 10c
- Ky. 11.7271-17.** One sheet. Metal-drum brooder stove. Price 10c
- U.S. 11.771-2.** One sheet. Water barrel on sled. Price 10c
- M.W. 77715.** One sheet. Alfalfa rack, 16"x24", height 3'; movable; mounted on legs. Price 10c
- M.W. 77716.** One sheet. Alfalfa rack, built between studdings of the poultry house; of poultry netting, with solid cover. Price 10c

Sheep Barns

- U.S. 11.725-2.** One sheet. One-story gable-roof, frame sheep barn 16'x24'. Price 10c
- U.S. 11.725-3.** One sheet. Sheep shed, open front, frame, 16'x24'. Price 10c
- Ky. 11.725-4.** Five sheets. One story, 25'x48'. Gable roof, containing 4 feeding pens, feed bunkers used for dividing floor space into pens. Price 50c
- Ky. 11.725-5.** Eleven sheets. A T-shaped barn consisting of a two-story gambrel-roof barn 36'x50' and two shed wings 25'x48' each. Main barn provides 4 large feeding pens, shearing pen, wash room, office and feed room. Each wing provides 4 large feeding pens. Feed bunkers are designed to be used as partitions for pens; thus pens can be made any size desired for lambing and feeding. Loft of main barn provides space for hay, bedding and storage of grain. Price \$1.10
- M.W. 72501.** One sheet. Sheep shed, 24'x32'. Frame construction; shed roof, height of studs, rear 7 ft., front 10 ft.; entirely enclosed; double sliding doors; feed alley and rack, 2 lambing pens, space for 30 to 35 sheep; foundation and floor under feed rack and in feed alley are of concrete. Price 10c
- M.W. 72502.** Two sheets. Sheep shed, 22'x42'. Frame construction; combination roof; open front; concrete foundation; 6-ft. feed alley, feed rack, space for 40 to 45 sheep, divided into 3 compartments. Price 20c

Sheep Equipment

- Ky. 11.772-1.** One sheet. Sheep rack and feed bunker. Price 10c
- Ky. 11.772-8.** One sheet. One-way feeding rack for sheep. Price 10c
- Ky. 11.772-11.** One sheet. Sheep, hog, and cattle loading chute for single and double-decked trucks. Price 10c
- Ky. 11.773-1.** One sheet. Dipping vat for sheep.
- Ky. 11.773-2.** One sheet. Portable dipping vat for sheep. Price 10c
- Ky. 11.7761-1.** One sheet. Lamb creep for 50 lambs. Price 10c
- Ky. 11.7761-2.** One sheet. Lamb feed trough and creep. Price 10c
- M.W. 77511.** One sheet. Feed bunker for sheep, 2½'x8'. Rectangular trough 11" above ground; simple construction; easily moved. Price 10c

M.W. 77512. One sheet. Feed rack for sheep, 3½"x12". Hopper rack; may be constructed in 6' lengths. Price 10c

M.W. 77651. One sheet. Dipping vat for hogs and sheep. Concrete pit; plans for arrangement of cutting gates and draining pens. Price 10c

MACHINERY AND MECHANICAL EQUIPMENT

Ky. 11.2241-2. One sheet. Reversible terrace drag. Price 10c

Ky. 11.3134-1. One sheet. Potato grader. Price 10c

Ky. 11.3134-2. One sheet. Tilting saw table. Price 10c

Ky. 11.3135-1. One sheet. Lespedeza seed pan to attach to a mower. Price 10c

Ky. 11.314-1. One sheet. Kentucky castor bean thresher. Price 10c

Ky. 11.3171-2. One sheet. Hay-cock frame. Price 10c

Ky. 11.319-1. One sheet. Bag holder. Price 10c

Ky. 11.333-1. One sheet. Hay or tobacco frame. Size 6'8"x14'. Price 10c

Ky. 11.333-2. One sheet. Straight-frame wagon hay rack. Price 10c

Ky. 11.333-3. One sheet. Bent-frame wagon hay rack. Price 10c

Ky. 11.333-5. One sheet. 30-gallon oil-drum seed-treating machine. Price 10c

Ky. 11.333-6. One sheet. Farm sled. Price 10c

Ky. 11.333-7. One sheet. Hand hemp break. Price 10c

Ky. 11.3615-1. One sheet. A plank and a split-log road drag. Price 10c

Ky. 11.6116-1. One sheet. Device for making rope from binder twine. Price 10c

SANITATION

Sewage Disposal

Ky. 11.8511-2. One sheet. One-chamber septic tank of reinforced concrete; for a family of six to eight persons. Price 10c

U.S. 11.8512-1. Two sheets. Concrete vault sanitary privy, U. S. Dept. of Agriculture plan 670-E, No. 1297. Price 20c

Ky. 11.8512-2. One sheet. Sanitary privy for camps. Price 10c

Ky. 11.8513-3. One sheet. Camp bath house, 21'x25'. Price 10c

Water Supply and Storage Systems

Ky. 11.8553-1. One sheet. Reinforced concrete tank, 20' in diameter, 18' deep; capacity 35,000 gallons. Price 10c

Ky. 11.8553-2. One sheet. Reinforced concrete tank 16' in diameter, 16' deep; capacity 20,000 gallons. Price 10c

- Ky. 11.8553-3. One sheet. Reinforced concrete tank, 12'x16', capacity 13,500 gallons; and one 14'x16' tank, capacity 18,400 gallons. Price 10c
- Ky. 11.8553-6. One sheet. Circular brick cistern. Price 10c
- Ky. 11.8553-7. One sheet. Swimming pool. Price 10c
- Ky. 11.8553-8. One sheet. Stone farm spring house, pneumatic pump house. Price 10c
- Ky. 11.8553-9. One sheet. Concrete farm spring house. Price 10c

STORAGE BUILDINGS For Grain and Hay

- Ky. 11.731-1. One sheet. 27'x60' or longer. Details of pole and plank frame construction of an open hay shed. Cattle shed can be attached. Price 10c
- Ky. 11.732-3. One sheet. Corn crib, 10'x26'; capacity 1,000 bu. Shows alternative floor sections for wood and masonry. Price 10c
- U.S. 11.732-1. One sheet. Double corncrib with driveway between, 28'x32'. Capacity 2,000 bushels. Price 10c
- U.S. 11.732-6. One sheet. Granary 14'x24', capacity 1,800 bushels; extra hall storage 780 bushels. Price 10c
- U.S. 11.732-7. One sheet. Combination corncrib and granary with driveway between. Size 27'x32'; capacity 1,000 bushels of corn; 2,000 bushels of wheat. Price 10c
- U.S. 11.732-8. Two sheets. Corn elevator and granary; capacity 3,200 bu. ear corn; 2,000 bu. grain.
- U.S. 11.732-9. One sheet. Corncrib, 700 bu. capacity. Price 10c
- U.S. 11.732-10. One sheet. Four-bin, frame structure, 14'x24'; capacity 1,800 bushels. Price 10c
- U.S. 11.732-12. One sheet. Portable bin, 10'x10', capacity 500 bushels. Price 10c
- U.S. 11.732-12A. Two sheets. Grain bin, 10'x10½', frame construction, on piers. Capacity 500 bushels. Price 20c
- U.S. 11.732-13. One sheet. Movable bin, 12'x14', capacity 1,000 bushels. Price 10c
- M.W. 73101 One sheet. Hay shed, 24'x60'. Pole construction, capacity 60 tons; sides and ends open to a height of 8 feet; 8'x12' hay door; gable roof; five 12-ft. bents; 12-ft. driveway through center bent; roof trusses of 2"x6" plank, spaced 12 ft.; plate and ridge 20 and 29 feet respectively. Price 10c
- M.W. 73201. One sheet. Double corncrib, 26'x32'. Frame construction; concrete foundation; floor and shelling trench; gable roof; 10' driveway; height to plate 10'. Capacity 2050 bu. Price 10c
- M.W. 73221. Two sheets. Corncrib and granary, 27'x32'. Frame construction; concrete foundation; floor and shelling trench; 11' driveway; gable roof; overhead bins; adapted for built-in elevator. Capacity: grain 3500 bus.; ear corn 3300 bus. Price 20c
- M.W. 73231. Three sheets. Farm elevator, 30'x30'. Frame construction; concrete foundation and floors; gambrel roof; 10' driveway; built-in elevator; overhead bins above driveway and power room. Capacity 10,000 bus. Price 30c

Ky. 11.7
cons
pap

Ky. 11.7

U.S. 11.
stru

Ky. 11.7
plan

U.S. 11.
Pric

Ky. 11.7
roof

Ky. 11.7
stru
ceil
con

M.W. 7.
stru
cen
flo

M.W. 7.
stru
hou
aro

M.W. 7.
fram
bin
Pric

Ky. 11.

U.S. 11.

U.S. 11.
Cap

Ky. 11.

M.W. 7
cre
to

M.W. 7
low
for
ver

U.S. 11
fou

For Fruits and Vegetables

- Ky. 11.734-1. Three sheets. Above-ground apple storage house, 16'x24'. Frame construction. Side walls and ceiling insulated with wood and building paper providing insulation equivalent to 3" cork. Price 30c
- Ky. 11.734-2. One sheet. Concrete storage cellar, 12'x20'. Price 10c
- U.S. 11.734-3. Two sheets. Sweetpotato house, 20'x40'. One-story, frame construction. Price 20c
- Ky. 11.734-4. One sheet. Storage cellar, 10'x12'. Walls and roof of poles and planks. Price 10c
- U.S. 11.734-5. One sheet. Sweetpotato house, 16'x29'6". One-story frame. Price 10c
- Ky. 11.734-6. One sheet. Storage cellar, 10'x12'. Walls of stone or concrete; roof of concrete or poles. Price 10c
- Ky. 11.734-7. Two sheets. Two-story, 24'x36' bank type of fruit storage structure. Lower story, constructed of cement blocks, insulated walls and ceilings. Well ventilated, capacity 1500 bushels. Upper story of frame construction for sorting fruits and storage of equipment. Price 20c
- M.W. 73401. Three sheets. Fruit and vegetable cellar, 20'x36'. Concrete construction; 4 ventilating intake flues at corners and one out-take flue at center; 3-foot earth fill over roof; approach and entrance at level of floor; capacity 4000 bus. Price 30c
- M.W. 73402. One sheet. Fruit and vegetable cellar, 8'x10'. Concrete construction, dirt floor; entrance through short tunnel from basement of house; equipped for ventilation; opening to outside for filling; tile drain around foot of wall; earth fill over roof; capacity 150 to 200 bus. Price 10c
- M.W. 73411. One sheet. Sweetpotato house, 12'x16'; 400 to 500 bus. in crates; frame construction; gable roof; pier and girder foundation, 3 slatted bins; provision for stove; floor and roof ventilators; windows in ends. Price 10c

Smokehouses and Meat Storage

- Ky. 11.371-1. One sheet. Press box for curing bacon. Price 10c
- U.S. 11.751-1. One sheet. Frame smokehouse, 6'x8'. Price 10c
- U.S. 11.751-2. One sheet. Insulated meat-curing box, 4'10"x6'11 $\frac{3}{4}$ "x7'11 $\frac{3}{4}$ ". Capacity 1800 to 2000 pounds of meat and 1600 pounds of ice. Price 10c
- Ky. 11.751-3. One sheet. Hog butchering outfit. Price 10c
- M.W. 75101. One sheet. Frame smokehouse, 6'x8'. Frame construction; concrete foundation; gable roof; concrete firebox with terra cotta pipe duct to house. Price 10c
- M.W. 75111. One sheet. Masonry smokehouse, 8'x9'. Concrete block or hollow tile construction, concrete foundation and floor, flat roof of reinforced concrete; adjacent concrete fire pit with duct through wall; 2 roof ventilators. Price 10c
- U.S. 11.751-4. Three sheets. Slaughterhouse, 21'x30'x17 $\frac{1}{2}$ ' to eaves. Concrete foundation, wall extends 5' above floor, frame construction above. Price 30c

Tobacco Barns and Equipment

- Ky. 11.735-1.** Four sheets. Standard 6-acre barn, 40'x72', having both vertical and horizontal ventilator doors and the new ridge ventilator for air-curing Burley tobacco. Price 40c
- Ky. 11.735-2.** Three sheets. Tobacco stripping shed, 14'x24', lighted by skylights in roof. Price 30c
- Ky. 11.735-3.** One sheet. Four-acre, fire-curing barn, 24'x24', convertible into horse barn having 4 box stalls, gear room, and feed room. Price 10c
- Ky. 11.735-4.** Three sheets. Fire-curing dark-tobacco barn, 20'x48'8", to hold 5.5 acres. Barn is provided with special ventilators and fire protector screens. Price 30c
- Ky. 11.735-5.** Two sheets. 1½-acre air-curing Burley tobacco barn, 28'x36'. Vertical side ventilators and new ridge ventilator. Price 20c
- Ky. 11.735-6.** One sheet. Pan for steaming tobacco beds, 9'x12'. Price 10c
- Ky. 11.735-7.** One sheet. Wagon box tobacco press for 100-125 sticks. Price 10c
- Ky. 11.735-8.** Two sheets. One-acre, dark-firing tobacco barn, 20'x28'. Price 20c
- Ky. 11.735-9.** One sheet. Homemade tobacco wall press. Price 10c

Machine Sheds, Shops, and Garages

- Ky. 11.741-1.** Two sheets. Machine shed, 24'x60'. Frame construction, concrete piers, workshop in one end, sliding doors in front. Price 20c
- Ky. 11.741-2.** Three sheets. Combination machinery building, 16'x32', having space for a workshop, truck and tractor and a corner crib. Price 30c
- Ky. 11.741-3.** One sheet. Garage for 3 cars or trucks, 20'x32'. Price 10c
- Ky. 11.741-4.** One sheet. One-car garage, 10'x18'. Price 10c
- Ky. 11.741-5.** One sheet. Combination garage, laundry and vegetable storage, frame building 20'x20'. Price 10c
- M.W. 74111.** One sheet. One-car garage, 12'x20'. Frame construction; concrete foundation and floor; gable roof; floor drain; space for one car; work bench at end. Details for alternative masonry wall. Price 10c
- M.W. 74112.** Two sheets. Two-car garage and shop, 18'x24'. Frame construction; concrete foundation and floor; gable roof; space for truck, car and repair shop; side door entrance; details for alternative masonry wall. Price 20c
- M.W. 74113.** Two sheets. Two-car garage, 18'x20'. Frame construction; concrete foundation and floor; hip roof; floor drain; side door entrance. Details for alternative masonry wall. Price 20c
- M.W. 74121.** One sheet. Machinery shed and shop, 20'x48'. Frame construction; concrete foundation and footings, 10'x18' shop with concrete floor in one end of shed; gable roof; 3 large sliding doors for the front openings, each 12' wide and 8' high. Price 10c
- M.W. 74122.** Two sheets. Machinery shed, 24'x36'. Frame construction; concrete foundation and piers; gable roof with scissors truss; continuous doors in front 10' wide; large door in end. Shed can be built any desired length. Price 20c

M.W. 7
cret
to 1

M.W. 7
con
ma

Ky. 11.

Ky. 11.
sas

Ky. 11.

Ky. 11.

Ky. 11.

Ky. 11.

Ky. 11.
kiln

Ky. 11.
Pri

KEN

(W
public

Boo

Cir

Cir

Cir

Cir

Cir

Cir

Cir

Cir

M.W. 74123. Three sheets. Machinery shed, 26'x80'. Frame construction, concrete foundation and piers; gable roof; 15'x26' shop at one end; adapted to house thresher separator; two optional floor plans. Price 30c

Manure Pit

M.W. 74301. Two sheets. Concrete manure pit, 18'x37'. Walls and floor are concrete; gable roof of frame construction over pit and driveway, which may serve as a shelter for manure spreader. Price 20c

Lime Shed

Ky. 11.754-1. One sheet. A community lime shed. 10'x36'. Price 10c

MISCELLANEOUS STRUCTURES

Ky. 11.792-1. One sheet. Plant house, 11'4"x12'. Constructed of greenhouse sash; heated by stove. Price 10c

Ky. 11.792-2. One sheet. Community canning plant or kitchen. Price 10c

Ky. 11.794-1. One sheet. Log cabin for camps. Price 10c

MISCELLANEOUS EQUIPMENT

Ky. 11.2241-1. One sheet. Kentucky variable-grade terracing level. Price 10c

Ky. 11.750-1. Two sheets. A beehive of 3 sections. Price 20c

Ky. 11.754-2. One sheet. Details and instructions for building a lime-burning kiln. Price 10c

Ky. 11.754-3. One sheet. Details for constructing a stack for burning lime. Price 10c

KENTUCKY EXTENSION PUBLICATIONS CONTAINING INFORMATION ON FARM BUILDINGS AND EQUIPMENT

(When ordering, give both the number and the title of the publication.)

Booklet—Plans for Dwellings and Farm Buildings in Kentucky—Price 15c

Cir. 125. Pitcher Pump Installations

Cir. 131. Septic Tanks for Sewage Disposal

Cir. 157. Brooding Chicks

Cir. 247. Burning Limestone for Agricultural Purposes

Cir. 249. Producing Milk of Good Quality

Cir. 266. Home Storage Structures and Equipment

Cir. 270. Hotbeds and Cold Frames

Cir. 311. Electric Service for the Farmstead

- Cir. 315. How to Estimate the Cost of Wiring, Equipment and Electric Service for the Farmstead.
- Cir. 317. Earth Dams for Farm Reservoirs.
- Cir. 319. Electrically Operated Water Systems for Farms
- Cir. 335. Ventilation of Tobacco Barns
- Cir. 351. Housing Farm Poultry
- Cir. 375. Mowing Machines, Repair and Adjustment
- Leaflet 17. How to make a Lantern Brooder
- Leaflet 51. Storage Structures for Vegetables (Mound, Bank, Pit, and Barrel).
- Leaflet 52. Basement and Cellar Storage Structures
- Leaflet A-22. Hints on Remodeling Poultry Houses
- Leaflet A-24. Farm Reservoirs
- Leaflet 35. How to Dehydrate Food at Home
- Mimeo. A-23. Lime Spreader Made from Rear Axle of Ford Car
- Mimeo. A-32. Directions for Making a Fly Trap
- Mimeo. A-35. Trench Silos
- Mimeo. A-37. Electric Lights for Tobacco Stripping Rooms
- Mimeo. A-42. Sheep Feeding Equipment
- Mimeo. A-43. Suggestions on Electric Brooding
- Mimeo. A-51. Better Farm Gates
- Mimeo. A-53. Self-Feeder for Hogs
- Mimeo. A-55. Plans for the Inter-County Lighting Fixture for Stripping Tobacco
- Mimeo. A-56. Poultry Feeding Equipment, Range Feed Hopper and Reel Mash Hopper
- Mimeo. A-57. A House for Hogs (Shed type)
- Mimeo. A-58. Farm Shop Plan
- Mimeo. A-76. Wheat Storage Structures and Problems
- Mimeo. A-78. Equipment for Dehydrating Fruits and Vegetables
- Mimeo. A-84. Portable Hay and Grain Racks for Cattle
- Mimeo. A-86. Homemade Electric Water Warmers for Poultry
- Mimeo. A-92. Bale Tie Straightener
- Mimeo. A-97. Hemp Seed Beating Machine

Lexington, Kentucky

November, 1943

Cooperative Extension Work in Agriculture and Home Economics: College of Agriculture and Home Economics, University of Kentucky, and the United States Department of Agriculture, cooperating. Thomas P. Cooper, *Director*. Issued in furtherance of the Acts of May 8 and June 30, 1914.

5M-11-43