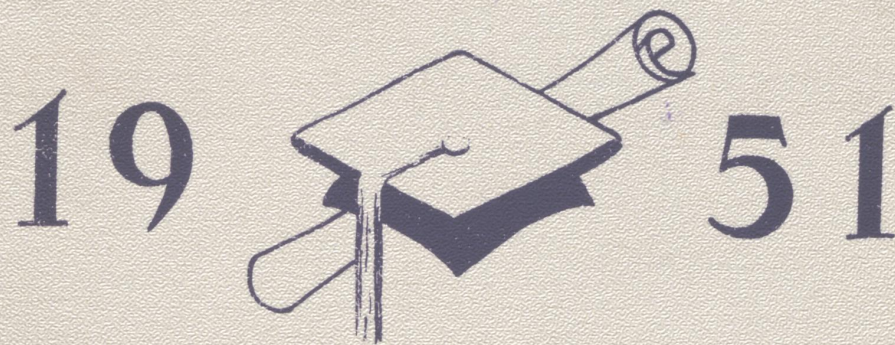
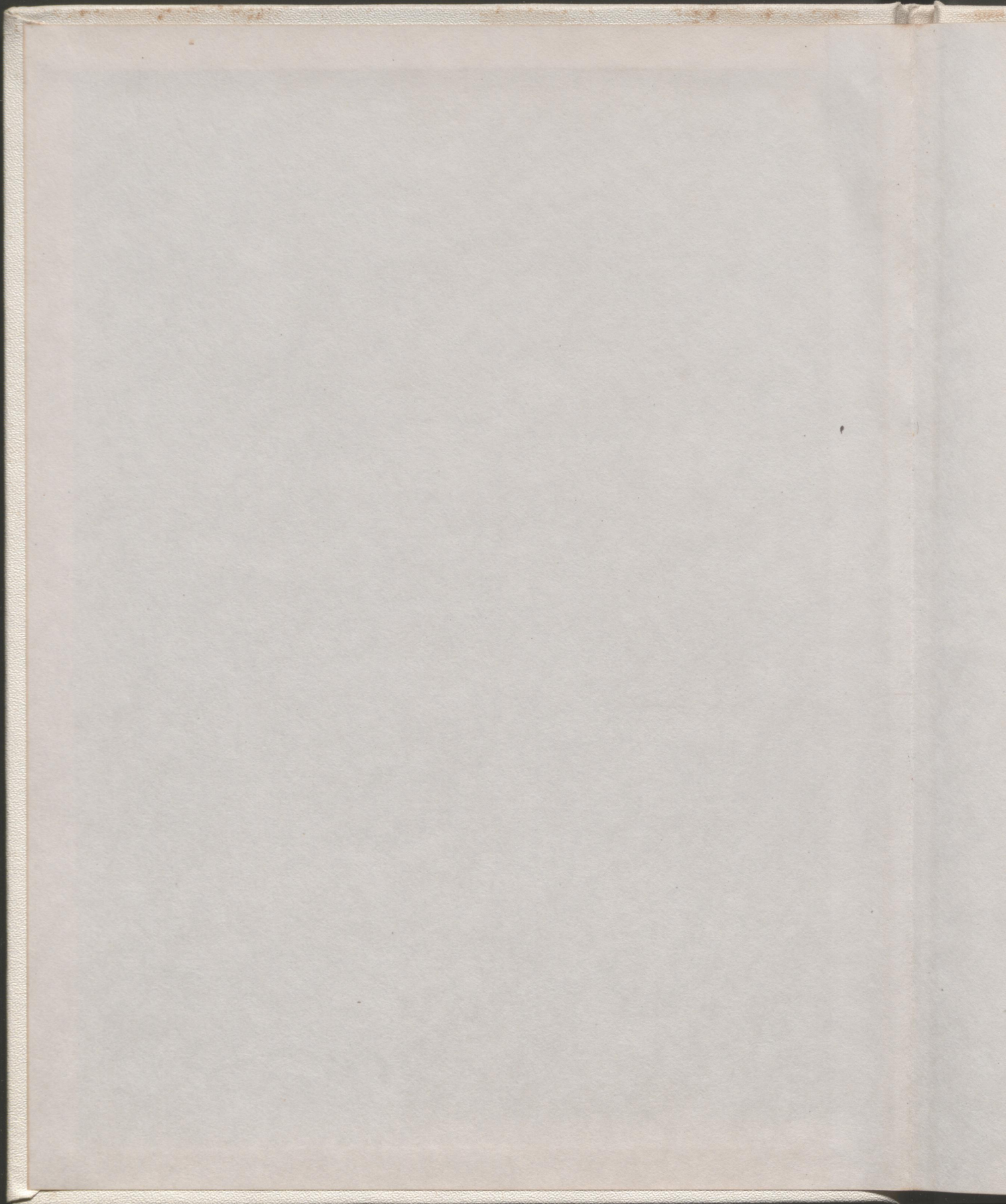
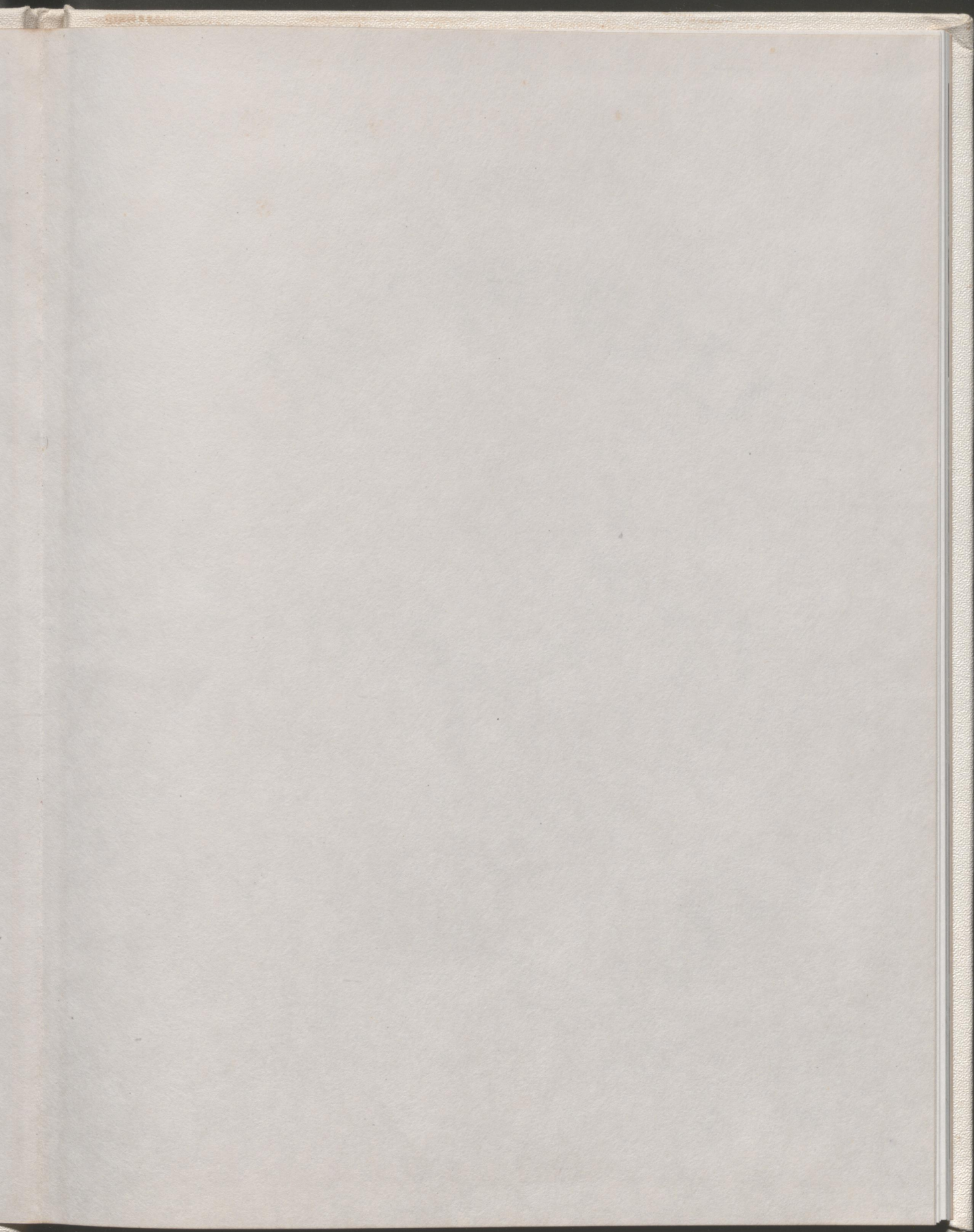


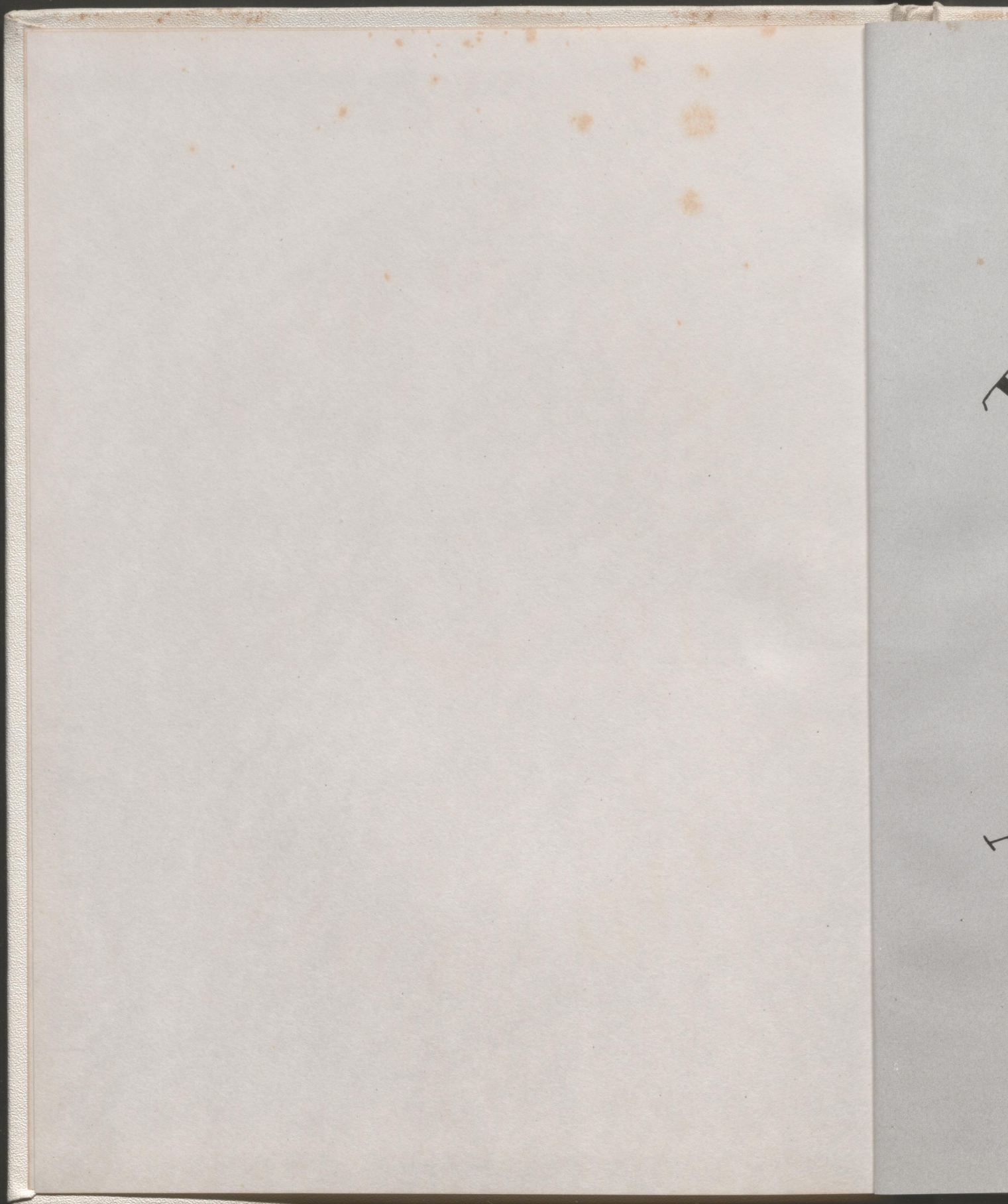
THE PURPLE



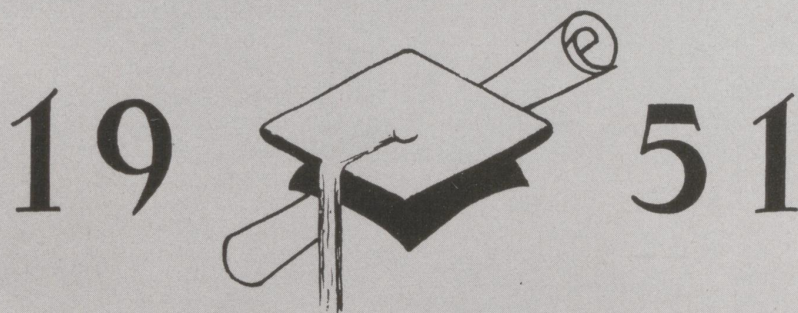
AND WHITE







THE PURPLE




AND WHITE

UNIVERSITY HIGH SCHOOL

Lexington, Kentucky

COLLEGE OF EDUCATION
UNIVERSITY SCHOOL

UNIVERSITY  OF KENTUCKY
LEXINGTON.



To the Class of 1951
You who are graduating have
had a vital part in the growth
and development of our school, just
as our school has had a part
in your growth and development.
To your thoughts, feelings and
actions we owe, in large part,
our attainments. Our worth and
reputation as a school has
been and will continue to be
determined by you.
My very best wishes to
each of you.

Lyman V. Ginger

FACULTY



LYMAN V. GINGER
Director

GRACE ANDERSON
Senior Class Sponsor
English

ALMA CARL
Seventh Grade

D. C. KEMPER
Science

MRS. RUTH HAINES
Art

MRS. RUTH STALLINGS
Music

DAVID C. McMURTRY
Commerce

ANNA B. PECK
Social Studies

LEON PORTER
Mathematics

MARTHA SHIPMAN
Eighth Grade

MARGARET ROSER
Librarian

PHYLLIS KLOECKER
Physical Education

KING RICHESON
Physical Education

ELIZABETH TAYLOR
English & Psychology

MARY WEST
Languages

PERRY R. ADAMS
Band

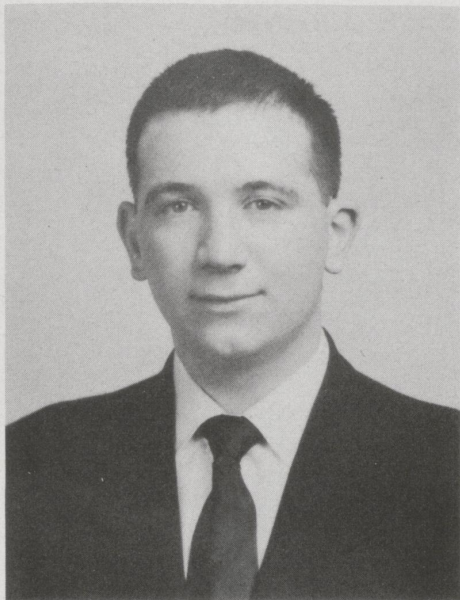
MRS. STELLA S. GILB
Physical Education

MRS. LOLA HAGAN
Physical Education

MRS. O. H. MAUSER
Cafeteria Manager

"WHAT WE ARE IS GOD'S GIFT TO US;
LET WHAT WE BECOME BE OUR GIFT TO GOD."

To our Parents and Teachers--May we finish the work you
"have thus far so nobly advanced"--A very humble "Thank
You"--And to you, the Class of '51 fondly dedicates their
Senior Annual.



HARRY W. ALEXANDER
Entered from M. M. I., '48

Vice-President of Class, '51; Beta Club, '51; Pep Club, '49, '50, '51; Chaplin of Hi-Y, '48, '49; Sportsman Club, '49, '50; Glee Club, '48, '49, '50, '51; Octet, '49, '50, '51; Quartet, '50, '51; Trio, '50, '51; All-State Chorus, '48, '49, '50, '51; B-Team Basketball, '49, '50; A-Team Basketball, '51; Baseball Team, '49; Tennis Team, '48, '49, '50, '51; State Tennis Tournament, '49 -- "We meet thee like a pleasant thought". - "Tiny."

SENIORS

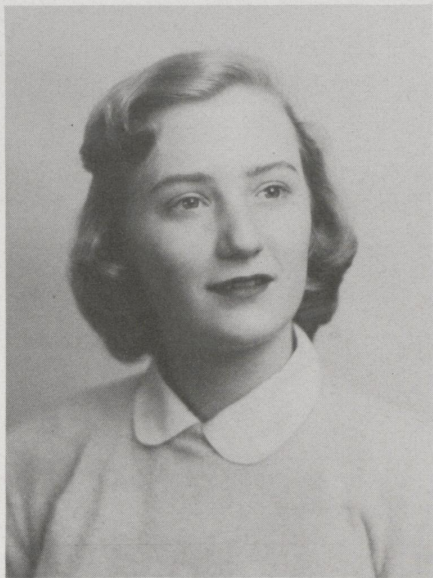
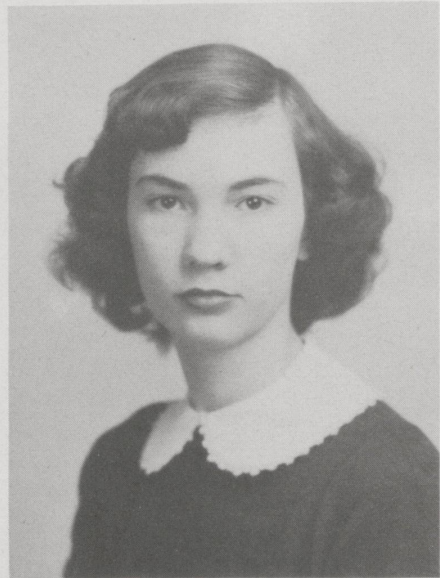
PATRICIA ANN ALVES
Entered from Versailles High School, '50

Y-Teens, '50, '51; Secretary of Convocation Committee, '51; Pep Club, '50, '51; Staff of U-Hi Lights, '50, '51; Junior Prom Court, '50; Glee Club, '50 -- "The only way to have a friend is to be one" -- "Patti."



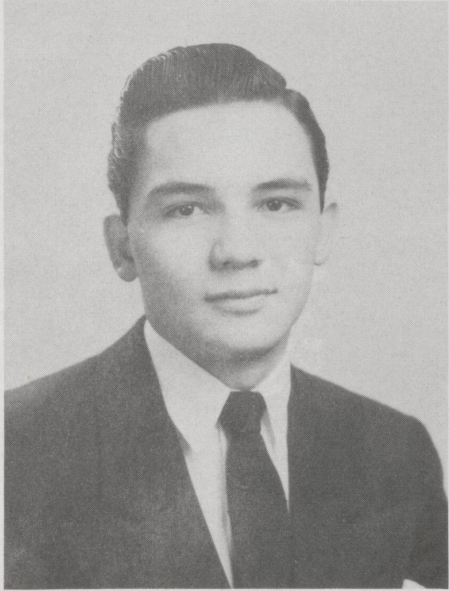
CAROLYN LOU CARTER
Entered from Elementary

Y-Teens, '48; Pep Club, '49, '50, '51; Masque and Gavel, '50, '51; Glee Club, '48; Band, '49, '50, '51; State Music Festival, '50; All-State Orchestra, '51; University Band Clinic, '50; Youth Orchestra, '50, '51 -- "Thought is deeper than all speech" -- "Lou."



SUSAN ROWLAND CLARKE
Entered from Barret Junior High, Louisville, '47

Pep Club, '49; Secretary of Pep Club, '50; Vice-President of Pep Club, '51; Beta Club, '49, '50, '51; Y-Teens, '48, '49, '50; Treasurer of Y-Teens, '51; Staff of U-Hi Lights, '50; Glee Club, '48, '49, '50, '51; Little Choir, '49, '51; Treasurer of Little Choir, '50; All-State Chorus, '48, '49, '50 -- "Gallantry of mind consists in saying flattering things in an agreeable manner" -- "Suzy."



ROBERT LLOYD CLAY
Entered from Elementary

Social Committee, '50, '51; Pep Club, '49, '50, '51; Sportsman Club, '49, '50, '51; Hi-Y, '48, '49; Boys' State, '49; Glee Club, '48, '49, '50, '51; Octet, '50, '51; Trio, '50, '51; Solo, Good Regional Music Contest, '49; Solo, Superior Regional and State, '50; Entry in Regional, '51; All-State Chorus, '49, '50, '51; B-Team Basketball, '49, '50; Track Team, '49, '50; Swimming Team, '49, '50; State Swim Meet, '49 -- "Someday Love shall claim him" -- "Bob."

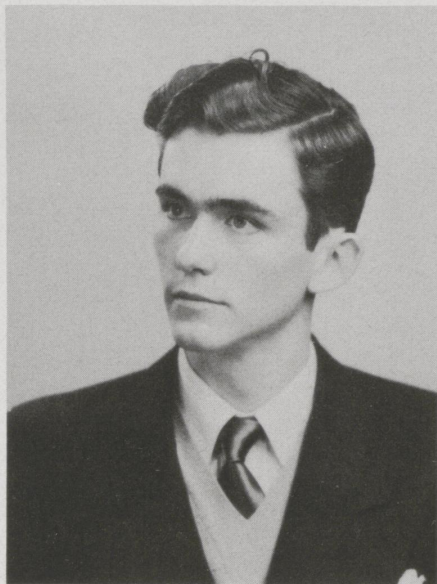
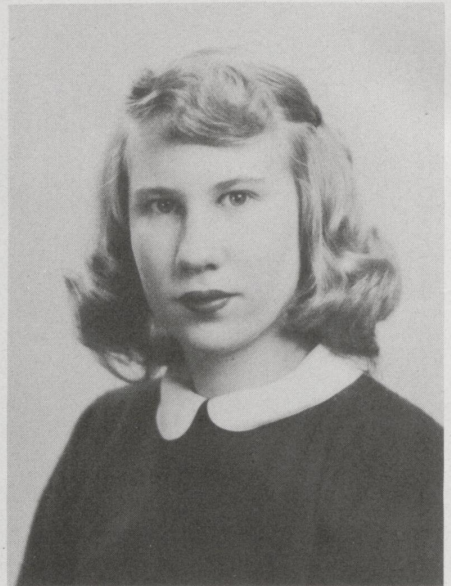
WILLIAM EUGENE CLAYTON
Entered from Morton Junior High, '48

Pep Club, '49, '50, '51; Hi-Y, '48, '49; Golf Team, '48; Track Team, '49 -- "A moral, sensible, and well-bred man" -- "Gene."



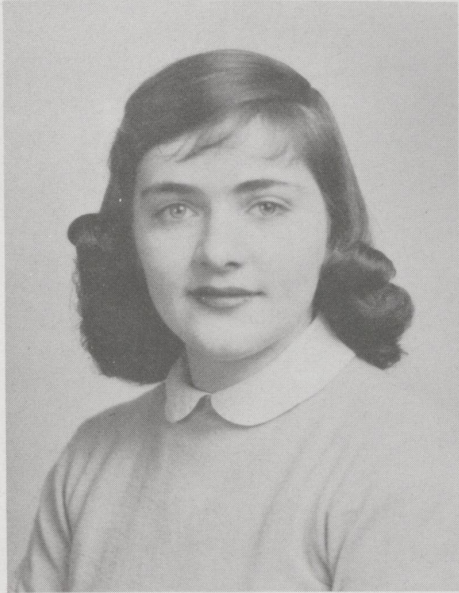
MARGARET ANN CLIFT
Entered from Fairfax Hall, Williamsburg, Va., '51

Y-Teens, '51; Pep Club, '51 -- "Here's a sigh to those who love me, and a smile to those who hate me" -- "Margy."



RAYMOND CAREY CRANFILL
Entered from Elementary

Beta Club, '50, '51; President of Class, '50; Business Manager of Annual, '51; Photographic Editor of U-Hi Lights, '51; Pep Club, '49, '50, '51; Hi-Y, '48, '49; Junior Prom Court, '50; B-Team Basketball, '50 -- "There's a good time coming, boys - a good time" -- "Crammy."

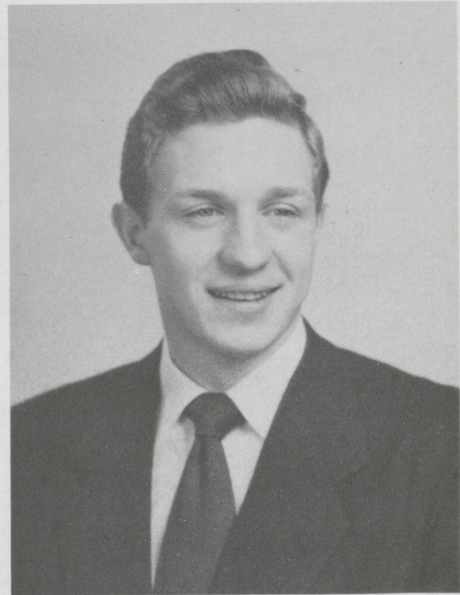


SALLY SUE DAVIS
Entered from Sayre School, '48

Masque and Gavel, '50; Secretary-Treasurer of Masque and Gavel, '51; Pep Club, '49, '50, '51; Speech Contest, '50, '51; Glee Club, '48; Band, '49, '50, '51; All-State Orchestra, '49, '50; State Band Clinic, '49, '50; State Music Festival, '49, '50, '51; University Concert Band, '51 -- "Her every word is sweetness" -- "Sally."

ELDON STEVEN DUMMIT, JR.
Entered from Elementary

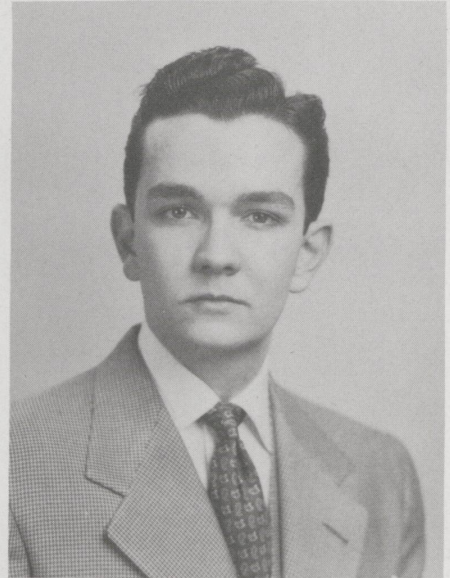
Pep Club, '49, '50, '51; Social Committee, '48, '49; Sportsman Club, '49, '50, '51; Hi-Y, '48, '49; Co-President of Junior High Pep Club, '48; Glee Club, '50, '51; B-Team Basketball, '49, '50; A-Team Basketball, '51; Track Team, '48, '49, '50, '51; Swimming Team, '48, '49, '50, '51; State Swim Meet, '49, '50 -- "A sound mind in a sound body" -- "Steve."



WILLIAM HATHORN EDDY

Entered from Country Day, New Orleans, La., '50

Pep Club, '50, '51; Masque and Gavel, '50; President of Masque and Gavel, '51; Photographic Editor of Annual, '51; Photographic Editor of U-Hi Lights, '51; Superior State Speech Contest, '50; Entry State Speech Contest, '51; Glee Club, '50, '51; Octet, '51; State Music Festival, '50 -- "Go where glory waits thee" -- "Bill."



ELIZABETH LINNEA FARRIS

Entered from Elementary

President of Class, '51; Secretary of Class, '50; Beta Club, '50, '51; Masque and Gavel, '50, '51; Delegate to Girls' State, '50; Delegate to Beta Convention, '51; Vice-President of Student Government, '50; Student Council, '49, '50; Pep Club, '49, '50, '51; Drumbeater for Cheerleaders; Y-Teens, '48, '49, '50; Worship Chairman of Y-Teens, '51; Y-Teens Basketball Team, '49, '50; Circulation Manager of Annual, '51; News Editor of U-Hi Lights, '51; Glee Club, '48, '49, '50, '51; Little Choir, '48, '49, '50, '51; Octet, '50, '51; All-State Chorus, '48, '49, '50; State Music Festival, '48, '49, '50, '51 -- "And sure the Eternal Master found the talent well employ'd" -- "Betty Linn."



JAMES WENDELL FLYNN
Entered from Lafayette Junior High, '49

Beta Club, '49, '50, '51; Vice-President of Beta Club, '51; Convocation Committee, '50; Pep Club, '49, '50, '51; Hi-Y, '49; Boys' State, '49; Hi-Y Basketball Team, '49; Junior Prom Court, '50; Glee Club, '49, '50, '51; Quartet, '50, '51; Trio, '50, '51; Octet, '50, '51; Solo, Excellent in Regional Music Contest, '50; All-State Chorus, '49, '50, '51 A-Team Basketball, '50, '51; All-K. I. A. T. Tournament Team, '51; Baseball Team, '50, '51; Golf Team -- "To be strong is to be happy" -- "Big Jim."

JIMMIE ROSE FOUTS
Entered from Elementary

National Honor Society, '51; Beta Club, '49, '50; Treasurer of Beta Club, '51; Delegate to Beta Convention, '51; Junior Prom Court, '50; Pep Club, '49, '50, '51; Cheerleader, '48, '49, '50, '51; Social Committee, '48; Y-Teens, '48, '51; Treasurer of Y-Teens, '49; Vice-President of Y-Teens, '50; Secretary of Inter-Club Council, '49; Y-Teens Basketball Team, '49; Staff of U-Hi Lights, '50; Assistant Feature Editor of U-Hi Lights, '51; Feature Editor of Annual, '51; Delegate to K. H. S. P. A., '50; Glee Club, '48, '49, '50, '51; Little Choir, '48, '49, '51; President of Little Choir, '50; Octet, '49, '50, '51; All-State Chorus, '48, '49, '50, '51; State Music Festival, '48, '49, '50, '51 -- "If you wish to be good, first believe you're had" -- "Jimmie Rose."

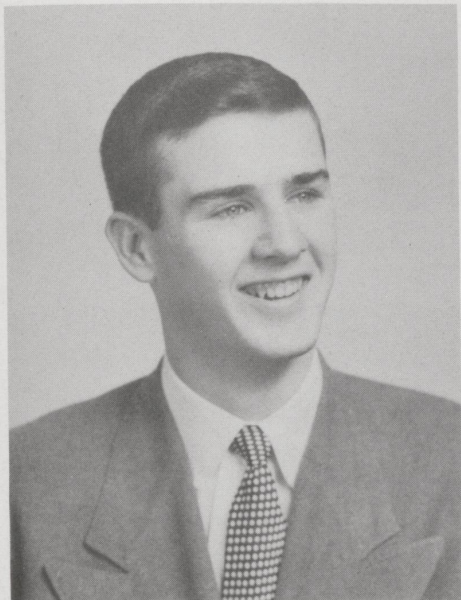


MERLE CASTLYN HAFFLER
Entered from Elementary

Y-Teens, '48, '49, '50, '51; Social Committee, '50;
Student Council, '51; Y-Teens Service Chairman, '51;
Pep Club, '49, '50, '51; Glee Club, '48, '49, '50,
'51 -- "If to her share some female errors fall, look
on her face and you'll forget 'em all" -- "Merle."



HART HAGIN II
Entered from Hillsdale High School, Cincinnati, '50
Y-Teens, '50, '51; Pep Club, '50, '51; Student
Government, '50; Masque and Gavel, '51; Staff of
U-Hi Lights, '51; Correspondence Chairman of French
Club, '51; Glee Club, '50, '51; Little Choir, '50;
Treasurer of Little Choir, '51 -- "A face that has a
story to tell" -- "Hart."



HENRY ALEXANDER HARPER, JR.
Entered from Midway Junior High, '46

Hi-Y, '48, '49; Sportsman Club, '49; Junior Prom Court, '50; Pep Club, '49, '50, '51; Staff of U-Hi Lights, '51; B-Team Basketball, '48; A-Team Basketball, '49, '50, '51; Baseball Team, '49, '50, '51 -- "Never morning wore to evening, but some heart he did break" -- "Alex."

NANCY ANN HARPER
Entered from Brownmoor, Phoenix, Arizona, '49

Y-Teens, '49, '50; President of Y-Teens, '51; Y-Teens Basketball Team, '49, '50, '51; Y-Teens Camp Council, '50, '51; Inter-Club Council, '50; Vice-President of Inter-Club Council, '51; Beta Club, '50; Secretary of Beta Club, '51; Delegate to Beta Convention, '51; Masque and Gavel, '50, '51; National Honor Society, '51; D. A. R. Good Citizenship Award, '51; Vice-President of Student Government, '51; Pep Club, '49, '50, '51; Advertising Manager of U-Hi Lights, '51; Advertising Manager of Annual, '51; Glee Club, '49 -- "Straight in the line of duty; curved in the line of beauty" -- "Ears."



WILLIAM OSBORNE HOLTON II
Entered from Morton Junior High, 48

Student Government, '51; Hi-Y, '48, '49; Sportsman Club, '48, '49; Pep Club, '49, '50, '51; Junior Prom Court, '50; Sports Editor of U-Hi Lights, '51; Sports Editor of Annual, '51; Golf Team, '48, '49, '50, '51; K. H. S. A. A. Golf Driving Champion, '49, '50; B-Team Basketball, '50 -- "Our Bill; With him is Heaven; without him is Hell" -- "Winston: "



ROSEMARY RUTH MCLAIN
Entered from Horace Mann-Lincoln, New York City, '46

Masque and Gavel, '51; Assistant News Editor of U-Hi Lights, '50; Assistant Business Manager of U-Hi Lights, '51; Pep Club, '49, '50, '51; Y-Teens, '49, '51; Glee Club, '48, '49, '50, '51; Little Choir, '48, '49, '50, '51; Octet, '49, '50, '51; Quartet, '49, '50, '51; All-State Chorus, '48, '49, '50, '51; Solo, Superior Regional Music Contest, '50; Solo, Excellent State Contest, '50; Entry in Regional, '51; Speech and Drama Regional and State Contests, '51 -- "She ceased; But still the trembling ears retained the deep vibrations of her witching song" -- "Runzy."

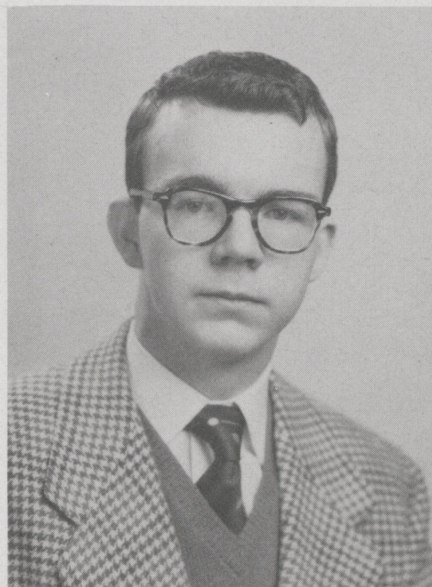


BETTY ANNE MAUSER
Entered from Elementary

Masque and Gavel, '51; Beta Club, '51; Secretary of Class, '51; Pep Club, '49, '50, '51; Y-Teens, '48, '49, '50, '51; Y-Teens Basketball Team, '49, '50, '51; Staff of U-Hi Lights, '49, '50; Feature Editor of U-Hi Lights, '51; Art Editor of Annual, '51; Cheerleader, '48, '49; Speech Contest, '51; Glee Club, '48, '49, '50, '51; Little Choir, '48, '49, '51; State Music Festival, '49, '50, '51 -- "She is pretty to walk with, and witty to talk with" -- "BAM."

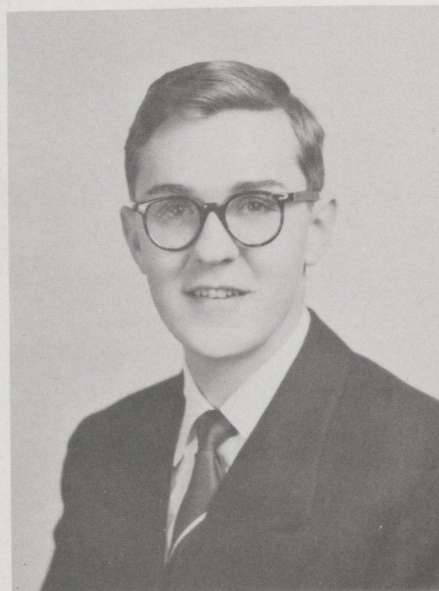
LESLIE WHITE MORRIS II
Entered from Elementary

Pep Club, '49, '50; Tryout Manager of Pep Club, '51; Masque and Gavel, '50, '51; Beta Club, '51; Vice-President of Class, '49; Convocation Committee, '49; News Editor of U-Hi Lights, '50; Editor of U-Hi Lights, '51; Editor of Annual, '51; Delegate to K. H. S. P. A., '50; Hi-Y, '48, '49; Sportsman Club, '51 -- "He gave with zest and he gave his best; give him the best to come" -- "Lucretz."



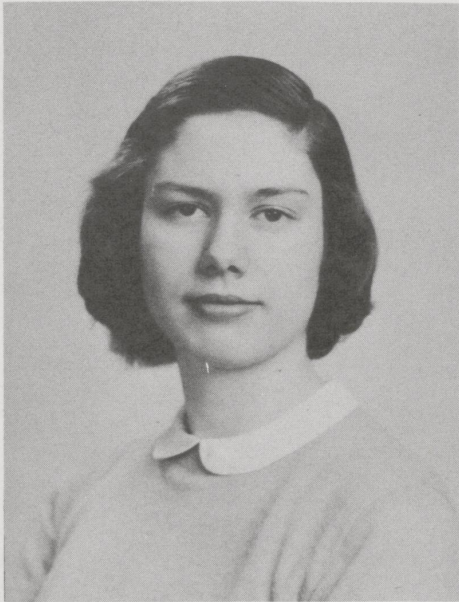
JAMES PARK, JR.
Entered from Elementary

National Honor Society, '50, '51; Beta Club, '49, '50; President of Beta Club, '51; Delegate to Beta Convention, '50, '51; Pep Club, '49, '50; President of Pep Club, '51; Vice-President of Class, '50; Masque and Gavel, '51; Staff of U-Hi Lights, '49; Assistant Sports Editor of U-Hi Lights, '50; Assistant Editor of U-Hi Lights, '51; Delegate to K. H. S. P. A., '50; Assistant Editor of Annual, '51; Sportsman Club, '49, '51; Treasurer of Sportsman Club, '50; Student Council '50; Manager of Basketball Team, '49; Manager of Track Team, '48 -- "He that once is good, is ever great" -- "Senator."



AURA JEAN PRICE
Entered from Bryan Station School, '47

Pep Club, '49, '50, '51; Y-Teens, '48, '49, '50, '51; Y-Teens Basketball Team, '50, '51; Treasurer of French Club, '51; Staff of U-Hi Lights, '49, '50, '51; Glee Club, '48, '49, '50, '51; Little Choir, '49, '50, '51; All-State Chorus, '50 -- "To love her is a liberal education" -- "A. J."



MOLLY JUNE RANNELLS
Entered from Elementary

National Honor Society, '50, '51; Y-Teens, '48;
Assistant Art Editor of Annual, '51 -- "I know and love
the good" -- "Molly."

MARGARET LOU REDD
Entered from Morton Junior High, '48

Y-Teens, '48, '49, '50, '51; Y-Teens Basketball
Team, '49, '50; Pep Club, '49, '50, '51; Cheer-
leader, '48, '49, '50, '51; Staff of U-Hi Lights, '51;
Glee Club, '48, '49, '50, '51 -- "Grace was in her
step, and Heaven in her eye" -- "Peggy."



GEORGE DALE ROBINSON
Entered from Elementary

National Honor Society, '51; Student Council, '49; President of Student Council, '51; Beta Club, '50, '51; Masque and Gavel, '50, '51; Pep Club, '49, '50, '51; Hi-Y, '48, '49; Sportsman Club, '51; Assistant Sports Editor of U-Hi Lights, '51; Manager of Basketball Team, '50, '51; Glee Club, '48, '49, '50, '51; All-State Chorus, '50 -- "Life is not so short but that there is always time for courtesy" -- "Dale."



ELIZABETH LUCINDA ROGERS
Entered from St. Catherine, '50

Pep Club, '50, '51; Y-Teens, '50, '51 -- "Unto you Paradise is open" -- "Betty Lou."

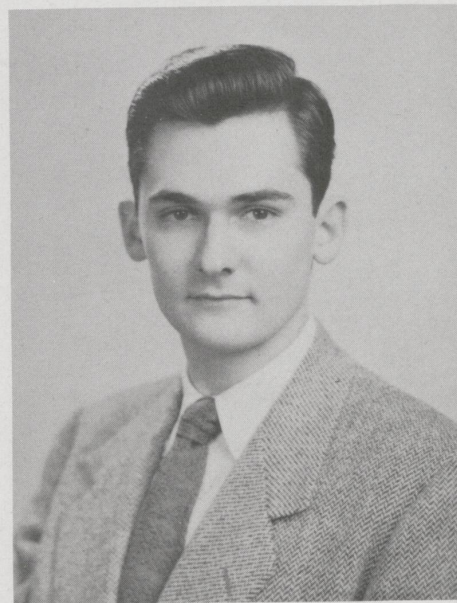


JOLINE MARIE SCOFIELD
Entered from St. Catherine, '47

Beta Club, '50, '51; Masque and Gavel, '50; Vice-President of Masque and Gavel, '51; Y-Teens, '48, '49, '50; Vice-President of Y-Teens, '50; Y-Teens Basketball Team, '48, '49, '50; Pep Club, '49, '50, '51; Cheerleader, '48, '49; Junior Prom Court, '50; Delegate to Beta Convention, '51; Inter-Club Council, '51; Business Manager of U-Hi Lights, '51; Circulation Manager of Annual, '51; Student Government, '51; Glee Club, '48 -- "The beautiful are never desolate - for someone always loves them" -- "Joey."

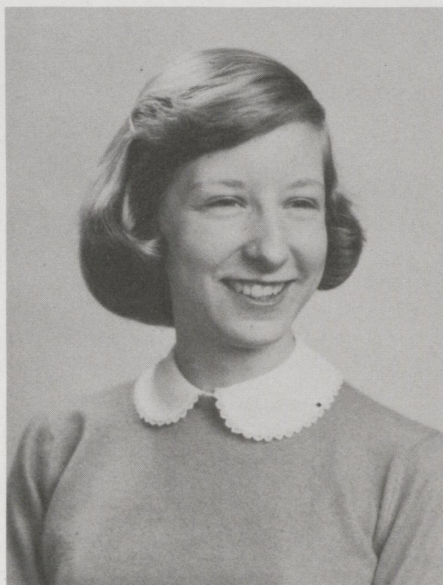
RICHARD MONROE SELLERS
Entered from Morton Junior High, '48

Student Government, '50; President of Student Government, '51; Student Council, '50; Pep Club, '49, '50, '51; Masque and Gavel, '51; Treasurer of Class, '50; Social Committee, '49; Sportsman Club, '51; Hi-Y, '48, '49; National Honor Society, '51; Advertising Manager of U-Hi Lights, '51; Photographic Editor of Annual, '51; Manager of Basketball Team, '49; Glee Club, '50, '51; Octet, '50; All-State Chorus, '50; State Music Festival, '50 -- "Are not great men the models of all nations?" -- "Dick."



FRANK MCVEY TILTON
Entered from Bryan Station School, '46

Pep Club, '49, '50, '51; President of Class, '48;
Sportsman Club, '48; Hi-Y, '49; Glee Club, '49, '50;
All-State Chorus, '50; Junior Prom Court, '50; B-
Team Basketball, '49; A-Team Basketball, '50, '51;
All-K. I. A. T. Tournament Team, '51; Tennis
Team, '48, '49, '50, '51 -- "Give me that man
who is not Passion's slave" -- "Effie."



NANCY HAMON TINDER
Entered from Elementary

Pep Club, '49, '50, '51; Y-Teens, '48, '49, '50,
'51; Y-Teens Basketball Team, '50, '51; Treasurer
of Class, '49; Secretary of Social Committee, '51;
President of French Club, '51; Secretary of Junior
Council, '48; Cheerleader, '48, '49, '50; Junior
Prom Court, '50; Staff of U-Hi Lights, '51; Glee
Club, '48, '49 -- "Whosoever loveth me, loveth my
hound" -- "Nance."

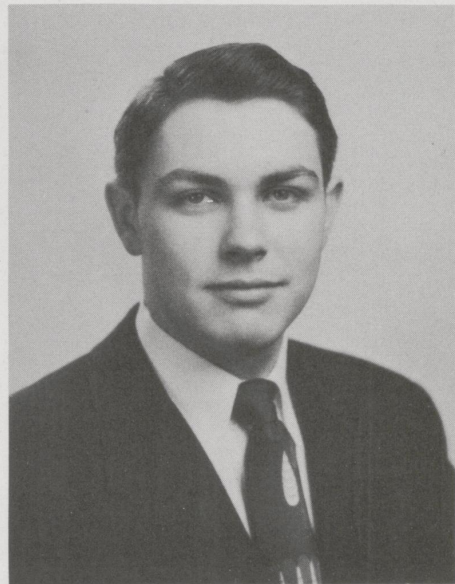


ROSA JOHNSTON TUCKER
Entered from Elementary

Pep Club, '49, '50, '51; Y-Teens, '48, '49, '50, '51;
Cheerleader, '48; Glee Club, '48, '49, '50, '51 --
"O Joy! That in our embers is something that doth
live" -- "Posey."

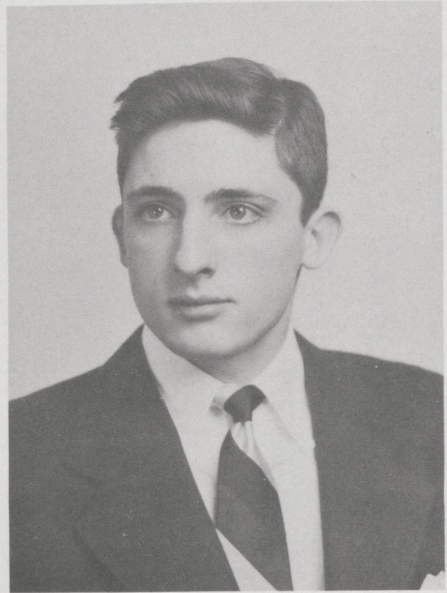
JAMES EDWARD WALTERS
Entered from Elementary

Pep Club, '49, '50, '51; Hi-Y, '48, '49; Social Com-
mittee, '48; Member of Fayette County 4-H Club;
Glee Club, '48, '49, '50, '51; B-Team Basketball,
'49, '50, '51; Track Team, '48; Baseball Team, '48
-- "Truth, Honor, Brave and Just; that men might
honor and women trust" -- "Bill."



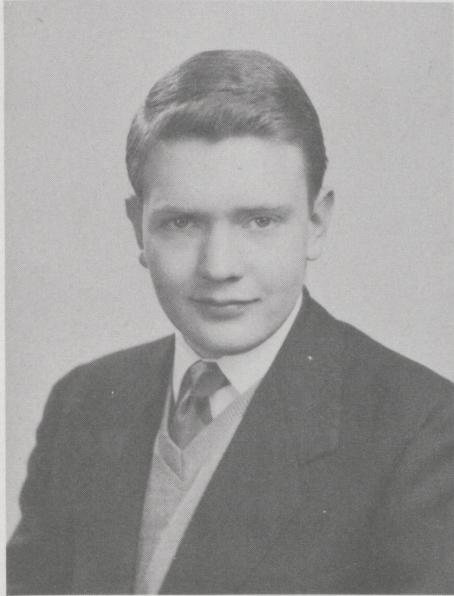
JOSEPH SABLE WILE, JR.
Entered from Elementary

Pep Club, '49, '50, '51; Student Council, '51; Hi-Y, '48, '49; Sportsman Club, '49, '50; Assistant Advertising Manager of Annual, '51; Co-President of Junior High Pep Club, '48; B-Team Basketball, '49; A-Team Basketball, '50, '51; Track Team, '48, '49, '50, '51; State Track Meet, '50; Baseball Team, '49, '50, '51; Glee Club, '48 -- "Better to be out of the world, than to be out of fashion" -- "Hooker."



EMILY JEAN WILLIS
Entered from Elementary

Y-Teens, '48, '49, '50, '51; Pep Club, '49, '50, '51; Staff of U-Hi Lights, '51; Dramatic and Speech Contests, '51; Glee Club, '48, '49, '50, '51; Octet, '49, '50, '51; Little Choir, '48, '49, '50, '51; Quartet, '50, '51; Solo, Superior Regional and State Music Contests, '50; Entry in Regional, '51; All-State Chorus, '50, '51 -- "Music is well said to be the speech of Angels" -- "Jeanne."



FRANK FRAZEE WILSON
Entered from Elementary

Pep Club, '49, '50, '51; Hi-Y, '48, '49; Sportsman Club, '51; Secretary of Sportsman Club, '49, '50; Treasurer of Class, '51; Social Committee, '49, '50; Glee Club, '49, '50, '51; All-State Chorus, '50; Swimming Team, '49, '50, '51; State Swim Meet, '49, '50 -- "Tomorrow to fresh woods and pastures new" -- "Buddy."

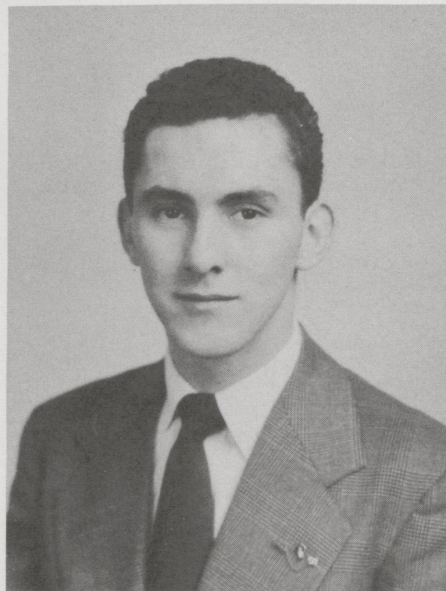
JANET CARTER WOOD
Entered from Elementary

Beta Club, '51; Vice-President of Student Council, '51; Representative at State Student Council Convention, '51; Pep Club, '49, '50, '51; Y-Teens, '48, '49, '50, '51; Publicity Agent for Lexington Y-Teens, '51; Staff of U-Hi Lights, '50, '51; Glee Club, '48, '49, '50, '51; Little Choir, '48, '49; Secretary of Little Choir, '50; President of Little Choir, '51; All-State Chorus, '50 -- "She with all the charm of woman" -- "Woodie."



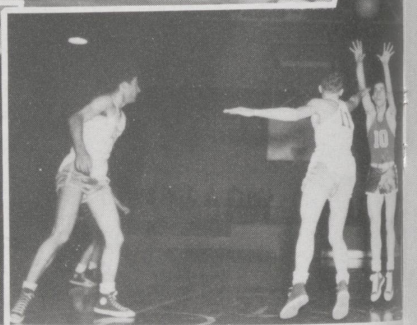
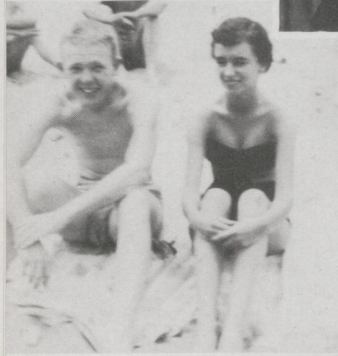
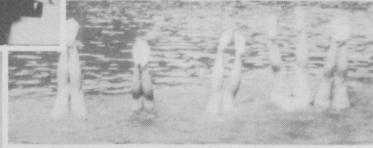
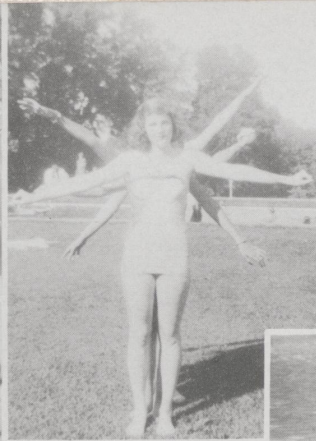
WILLIAM HARRISON ROSE
Graduated at first semester

Pep Club, '49, '50, '51; Beta Club, '49, '50, '51;
Senior Play, '50; Delegate to Beta Convention, '50,
'51; Hi-Y, '48, '49; Glee Club, '49, '50, '51; Swim-
ming Team, '50 -- "Men will speak well of thee"
-- "Billy."

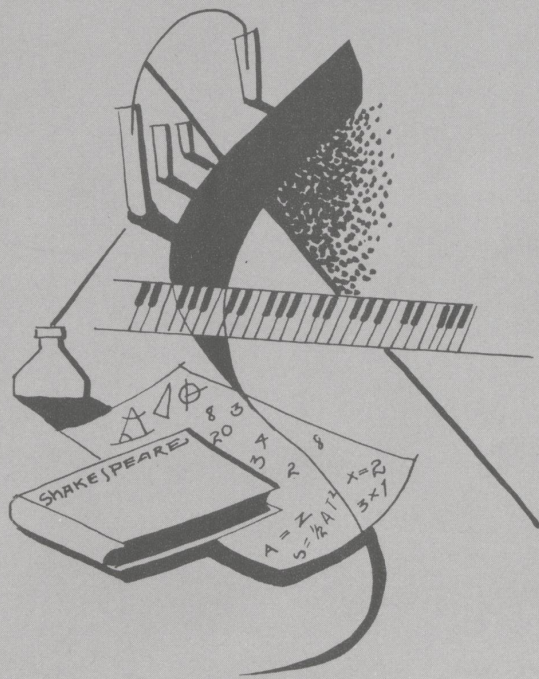




Key on Page 44



CLASSES ACTIVITIES



JUNIORS



FRONT ROW, LEFT TO RIGHT: Barbara Ashbrook, Nancy Wilder, Catherine Wilson, Kay Keyes, Kitty Thomson, Leila Heinz, Carey Adams, Susan Rannells, Patsy Coons. SECOND ROW; Sissy Wile, Barbara Hardwick, Helen Vance Gilb, Charline Whitehouse, Betty Jo Martin, Mary Gess, Grandison McLean, Garland Sims, Virginia McFadden, David McMurtry, Sponsor. THIRD ROW: Keith Moore, Marshall White, Sammy Kinkead, Frank McVey, Jack Congleton, David Piper, Glenn Dorroh. ABSENT: Lucie Dunlap, Jean Elaine Martin, Carolyn Williams.



OFFICERS

- President Sammy Kinkead
- Vice-President Barbara Ashbrook
- Secretary Patsy Coons
- Treasurer Mary Gess

SOPHOMORES



FRONT ROW, LEFT TO RIGHT: Stoney Dale, Dickie Queen, Jack Miller, Chuck Lowry, Robert Lawrence, Edwin Ward. SECOND ROW: Ronnie Atkins, Jim Kauffman, John Hardwick, President; Clara Es-Stel Yates, Treasurer; Barbara Roberts, Secretary; Bobby Davis, Vice-President; Jock Simpson. THIRD ROW: Coburn Blackerby, Rosemary Blackford, Ann Cornell, Courtney Noel, Mae Martin Bryant, Reba Lewis, David Walker, Maryan Drury, Dottie Jean Haddix, Jane Cole, Pat Gilson, Barbara Sublett, Miss Mary West, Sponsor. FOURTH ROW: Billy Hamilton, Buddy Willis, John Anderson, Bill Sims, Hamilton Rice, Curtis Ballard, John Bicknell, Sonny Lindquist, John Whitlow. ABSENT: Buck LeBus, Frank Ward.

FRESHMEN



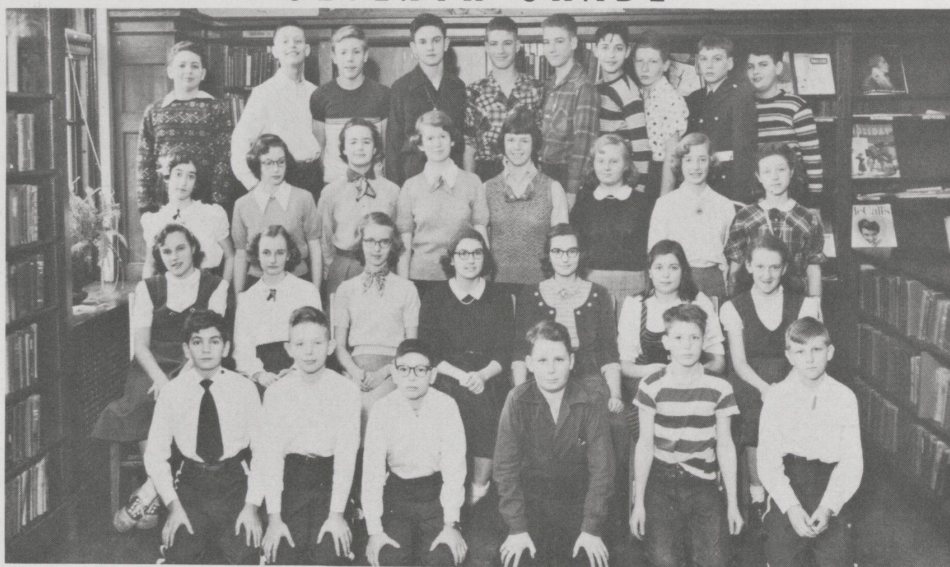
FRONT ROW, LEFT TO RIGHT: Shirley Cundiff, Helen Holmes, Mary Darnas, Clay Ross, President; Barbara King, Vice-President; Frances Harting, Secretary; Bobby Milward, Treasurer; Louise Watkins. SECOND ROW: Sammy Barkley, John Sprague, Jim Fortenberry, Phil Johnson, Bennett Clark, Morry Floyd, Leon Porter, Sponsor. THIRD ROW: Drue Cox, Nancy Boggs, Ann Powell, Nancy Adams, Shirley Johnston, Sara Proctor, Judy Horton, Laura Russell, Ann Pennington. ABSENT: Peggy Cowgill, Ellen Logan, Jimmy Robinson, Janet Ruffner.

EIGHTH GRADE



FRONT ROW, LEFT TO RIGHT: Wilma Dorroh, Betty Honaker, Lucy Alexander, Rhoda Tuthill. SECOND ROW: Nada James, Laura Weinman, Joyce Hall, Mary Reed, Ann Vimont, Jane Wilmott, Carolyn Arnett, Louise Scott, Ann Dangerfield. THIRD ROW: Tim Hart, David Whitehouse, Pope McLean, Skipper Adams, Lawrence Yates, Tommy Wood, Conrad Vogel, Price Headley, Meredith McFadden, Verner Johnson. FOURTH ROW: James Steed, Tommy Nuzum, T. Kinkead, Jim Farris, Bill Eaton, Beecher Adams, James Ward, Charles Behlen, Jimmy Whittenburg, Virgil Steed. ABSENT: Jean Alexander, Sonja Lunde, Robert Odear, Miss Martha Shipman, Sponsor.

SEVENTH GRADE



FRONT ROW, LEFT TO RIGHT: Tommy Rich, Bob Miller, Frank Barker, James Withrow, Sam Ward, Tom Green. SECOND ROW: Barbara Harper, Mary Mathews, Elizabeth Clark, Nancy Brown, Hannah Hargett, Virginia Van Meter, Caroline Reeves. THIRD ROW: Barbara Hymson, Nancy Pennington, Dobree Adams, Phoebe Estes, Peggy Nunn, Priscilla Roberts, Lois Meriwether, Linda Williams. FOURTH ROW: Waddill Platt, Rankin Blount, Joe Hagin, Jim Blackerby, Billy Ginger, Tommy Ginger, Bill Brown, Flem Harrison, Werley Harper, Dudley Williams. ABSENT: Mary LeBus, Miss Alma Carl, Sponsor.

ANNUAL STAFF



Editor	Leslie Morris
Assistant Editor	James Park
Business Manager	R. C. Cranfill
Photographic Editors	Richard Sellers
.	Bill Eddy
Art Editor.	Betty Anne Mauser
Assistant Art Editor.	Molly Rannells
Feature Editor	Jimmie Rose Fouts
Advertising Manager	Nancy Harper
Assistant Advertising Manager	Joe Wile
Circulation Managers	Betty Linn Farris
.	Joey Scofield
Sports Editor.	Bill Holton
Sponsor	Miss Elizabeth Taylor





MASQUE AND GAVEL

FRONT ROW, LEFT TO RIGHT: Dick Sellers, Joey Scofield, Vice-President; Bill Eddy, President; Sally Sue Davis, Secretary-Treasurer; Leslie Morris. BACK ROW: Nancy Harper, Carolyn Carter, Hart Hagin, Jim Park, Betty Linn Farris, Dale Robinson, Betty Anne Mauser, Rosemary McLain.

NATIONAL HONOR SOCIETY

FRONT ROW, LEFT TO RIGHT: Jimmie Rose Fouts, Treasurer; Jim Flynn, Vice-President; Jim Park, President; Nancy Harper, Secretary. SECOND ROW: Helen Vance Gilb, Betty Anne Mauser, Barbara Hardwick, Betty Linn Farris, Joey Scofield, Janet Wood, Susan Clarke, Carey Adams. THIRD ROW: Leslie Morris, Dale Robinson, Frank McVey, Harry Alexander, R. C. Cranfill.



BETA CLUB

FRONT ROW, LEFT TO RIGHT: Nancy Harper, Jim Park, Jimmie Rose Fouts. BACK ROW: Dale Robinson, Molly Rannels, Dick Sellers.

STUDENT GOVERNMENT



CLOCKWISE: Reba Lewis, Barbara Ashbrook, Bill Holton, Nancy Harper, Vice-President; Dick Sellers, President; Sissy Wile, Secretary; Joey Scofield, Bennett Clark, Betty Jo Martin, Jimmy Whittenburg, Clara Es-Stel Yates, Bobby Miller, Sara Procter, Ann Pennington, Sammy Barkley, Hannah Hargett, Drue Cox.

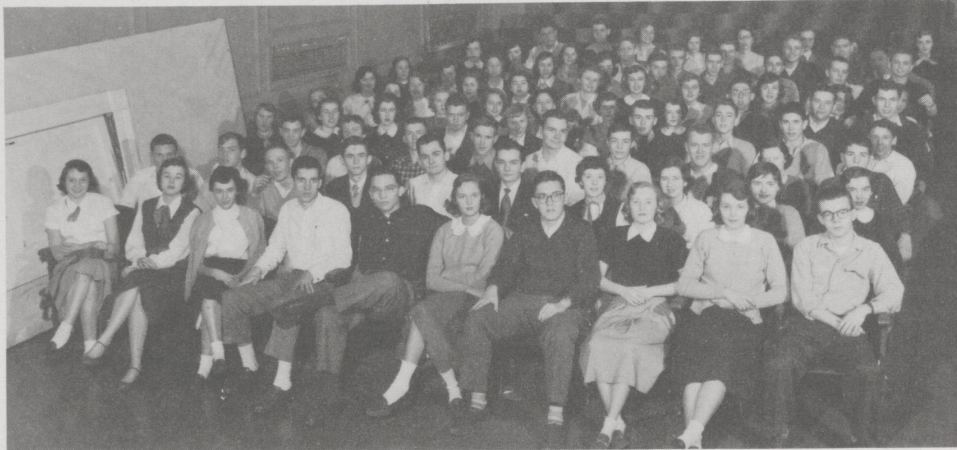


STUDENT COUNCIL



CLOCKWISE: Joe Wile, Nancy Pennington, Grandison McLean, Secretary-Treasurer; Dale Robinson, President; Janet Wood, Vice-President; Morry Floyd, Betty Jo Martin, Louise Watkins, Nada James, Bill Sims, Merle Haffler, Buddy Willis, Tommy Nuzum, Frank Barker, Kay Keyes.

PEP CLUB



OFFICERS: James Park, President; Susan Clarke, Vice-President; Grandison McLean, Secretary; Barbara Hardwick, Treasurer; Leslie Morris, Try-out Manager.



Y-TEENS



OFFICERS: Nancy Harper, President; Joey Scofield, Vice-President; Grandison McLean, Secretary; Susan Clarke, Treasurer.

THE V-HI LIGHTS STAFF



Editor	Leslie Morris
Assistant Editor	Jim Park
News Editor	Betty Linn Farris
Assistant News Editor	Carey Adams
Feature Editor	Betty Anne Mauser
Assistant Feature Editors	Betty Jo Martin
.	Jimmie Rose Fouts
Exchange Editor.	Kay Keyes
Sports Editor.	Bill Holton
Assistant Sports Editor.	Dale Robinson
Advertising Manager	Nancy Harper
Assistant Advertising Managers	Dick Sellers
.	Helen Vance Gilb
Business Manager	Joey Scofield
Assistant Business Manager	Rosemary McLain
Photographers	R. C. Cranfill
.	Bill Eddy

REPORTERS

Hart Hagin
 Barbara Hardwick
 Peggy Redd
 Leila Heinz
 Nancy Tinder
 Pat Alves
 Sally Davis
 Barbara Ashbrook
 Coburn Blackerby

Catherine Wilson
 Alex Harper
 Jim Fortenberry
 Barbara Roberts
 Nancy Wilder
 Phoebe Estes
 Sissy Wile
 Janet Wood
 Mary Gess

Clara Es-Stel Yates
 Mae Martin Bryant
 Aura Jean Price
 Kitty Thomson
 Ann Cornell
 Reba Lewis
 David Walker
 Chuck Lowry
 Jeanne Willis



GLEE CLUB



B
A
N
D

OCTET

FRONT ROW, LEFT TO RIGHT: Barbara Hardwick, Jeanne Willis, Carey Adams, Jimmie Rose Fouts, Rosemary McLain, Betty Linn Farris. BACK ROW: James Flynn, Bill Eddy, Bill Sims, Harry Alexander, Bob Clay.



FRONT ROW, LEFT TO RIGHT: Virginia McFadden, Jeanne Willis, Aura Jean Price, Carey Adams, Catherine Wilson, Susan Clarke, Rosemary McLain, Drue Cox, Jimmie Rose Fouts. BACK ROW: Garland Sims, Janet Wood, Betty Anne Mauser, Betty Jo Martin, Hart Hagin, Barbara Hardwick, Helen Vance Gilb, Betty Linn Farris, Kay Keyes.

L
I
T
T
L
E

C
H
O
I
R

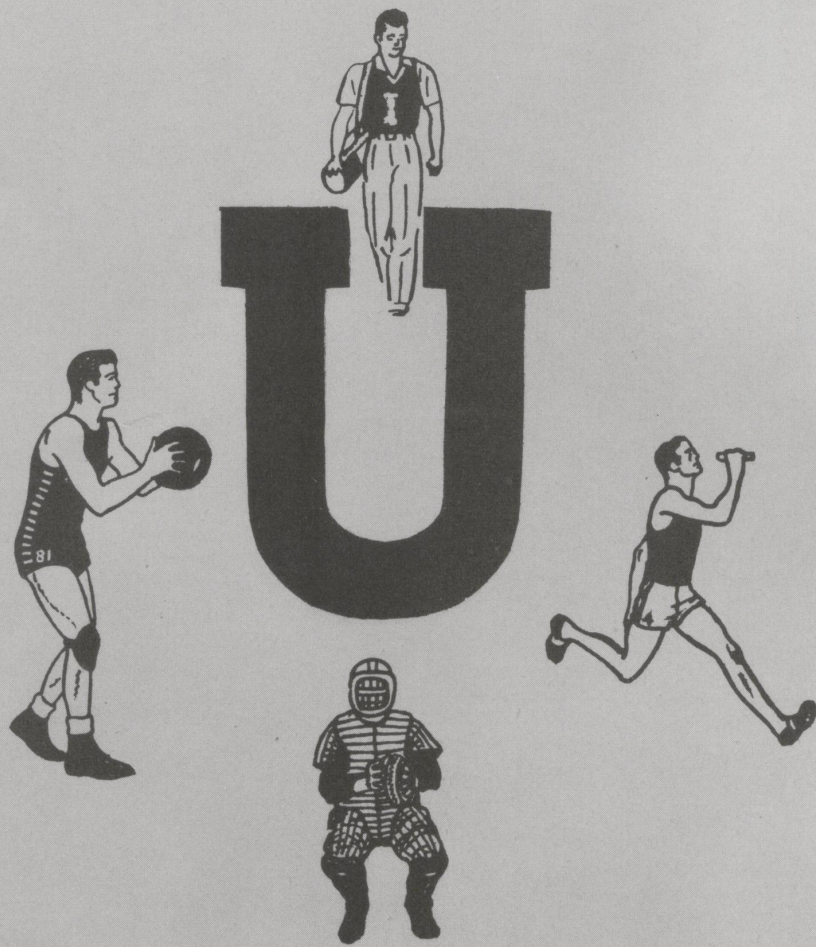


QUARTET

James Flynn, Jeanne Willis, Rosemary McLain, Harry Alexander.

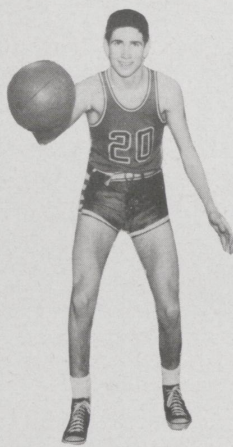


SPORTS





W I L E



H A R D W I C K



M O R E



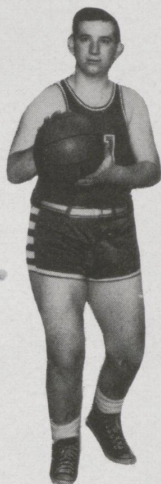
F L Y N N



T I L T O N



H A R P E R



A L E X A N D E R



D O R R O H

RECORD 27-4

U-Hi	65	38	Berea
"	42	49	Caverna
"	60	47	Harrison County
"	75	36	Kingston
"	55	33	Georgetown
"	50	48	Winchester
*"	53	35	Powell County
*"	49	45	Winchester
*"	48	65	Clark County

U-Hi	66	34	Wilmore
"	70	36	Hartford
"	35	38	Dixie Heights
"	62	37	Berea
"	56	33	Falmouth
"	93	46	M.M.I.
"	67	62	Elizabethtown
"	48	42	Harrison County
"	53	41	M.M.I.
"	64	36	Kingston
"	64	46	Mt. Sterling
"	73	42	Stanford
"	46	38	Harrodsburg
"	98	51	Wilmore

* K.A.I.T. (Winchester Tournament)

DISTRICT TOURNAMENT

U-Hi	56	31	Nicholasville
"	55	34	Latin
"	50	44	Henry Clay

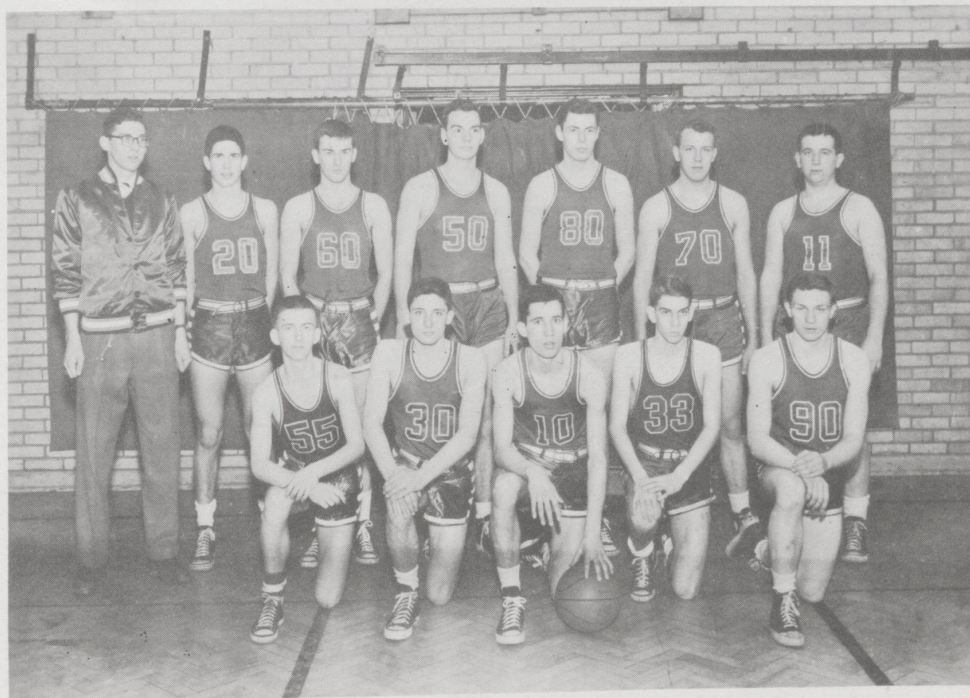
STATE TOURNAMENT

U-Hi	66	48	Hughes-Kirk
"	50	57	Cuba

REGIONAL TOURNAMENT

U-Hi	51	40	Kirkville
"	58	42	Frankfort
"	33	31	Harrodsburg

UNIVERSITY HIGH "PURPLES", '50-'51, 43RD DISTRICT, 11TH REGIONAL CHAMPS



COACH KING RICHESON'S 1950-'51 "PURPLES", LEFT TO RIGHT, FRONT ROW: Glenn Dorroh, Joe Wile, Keith Moore, Robert Lawrence, Steve Dummit. BACK ROW: Manager Dale Robinson, John Hardwick, Alex Harper, Frank McVey, Frank Tilton, All-State James Flynn, Harry Alexander.

CHEERLEADERS

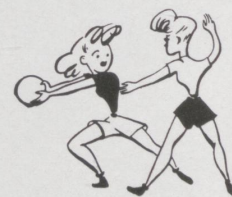


LEFT TO RIGHT: Jimmie Rose Fouts, Peggy Redd, Helen Vance Gilb, Sissy Wile and Barbara Sublett. ABSENT: Barbara Hardwick.

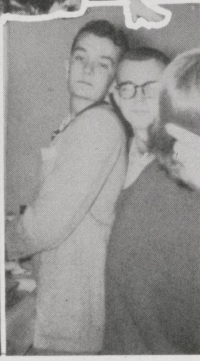
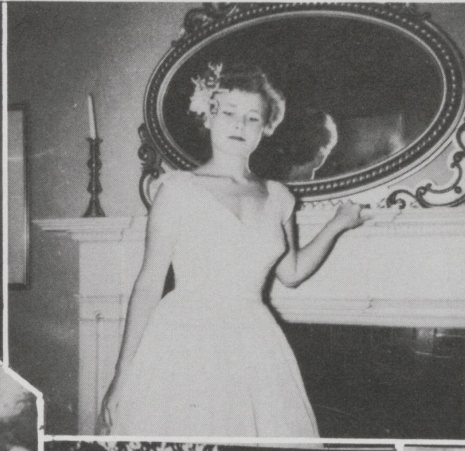


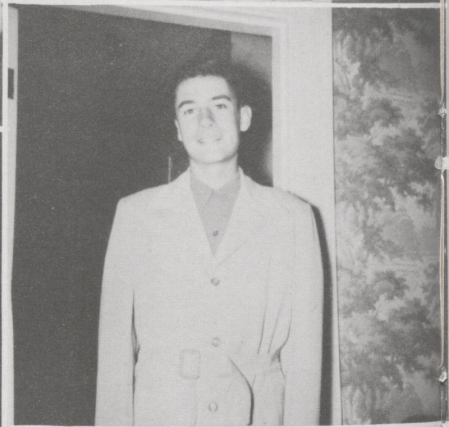
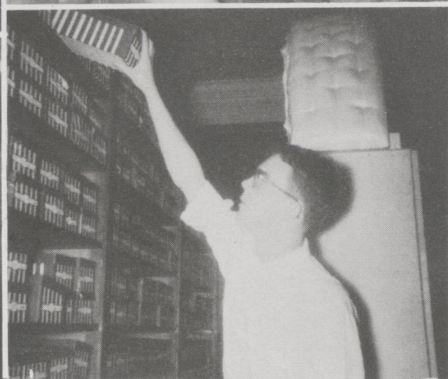
FIRST ROW, LEFT TO RIGHT: Dickie Queen, Glenn Dorroh, Jack Congleton, Jim Kaufman. SECOND ROW: Leslie Morris, John Hardwick, Buddy Wilson, Jim Park, Sammy Kinhead, Bill Sims, Chip Rice. THIRD ROW: Johnny Bicknell, Harry Alexander, Frank McVey, Dale Robinson, Marshall White, Steve Dummit. FOURTH ROW: Bill Eddy, Dick Sellers, David Piper, Curtis Ballard, Buddy Willis, Bobby Clay, Robert Lawrence.

SPORTSMAN

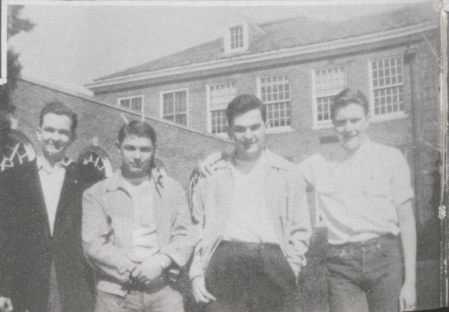


CLUB





Key to Page 25: 1. Hart Hagin 2. Alex Harper 3. Bill Holton 4. Betty Anne Mauser 5. Jim Park 6. Margy Clift 7. Betty Linn Farris 8. Dale Robinson 9. Frank Tilton 10. Nancy Tinder 11. Peggy Redd 12. R. C. Cranfill 13. Dick Sellers 14. Bill Eddy 15. Jim Flynn 16. Leslie Morris 17. Nancy Harper 18. Gene Clayton 19. Janet Wood 20. Jeanne Willis 21. Pat Alves 22. Joe Wile 23. Jimmie Rose Fouts 24. Aura Jean Price 25. Carolyn Carter 26. Molly Rannells 27. Betty Lou Rogers 28. Joey Scofield 29. Jimmy Walters 30. Buddy Wilson 31. Sally Sue Davis 32. Harry Alexander 33. Rosemary McLain 34. Bobby Clay 35. Merle Haf-flier 36. Susan Clarke.



ADVERTISING





THE ANNUAL STAFF WISHES TO CONGRATULATE THE UNIVERSITY HIGH "PURPLES" AND COACH KING RICHESON ON REPRESENTING THE ELEVENTH REGION IN THE 1951 KENTUCKY HIGH SCHOOL STATE BASKETBALL TOURNAMENT.

LEXINGTON'S OLDEST AND LARGEST BANK

FIRST NATIONAL

Bank and Trust Company

Established in 1865

MEMBER

FEDERAL RESERVE SYSTEM

F. D. I. C.

Hymson's
tots & teens
183 east main



Miss Jimmie Rose Fouts. . .University Hi Senior

Modeling a Rose and Grey-tone Nylon tulle formal
from TOTS AND TEENS

School Activities. . . Beta Club Treasurer
National Honor Society
Little Choir
Cheerleader
Pep Club
Glee Club

Octette. . . . Prom Court. . .Y-Teens

LIKE A BEACON...

"Your newspaper is your guiding light. Its editorials, cultural features and varied advertisements illuminate your paths of thought and action for a happy freer way of life."

LEXINGTON HERALD-LEADER

THE LEXINGTON HERALD
(Morning)

THE LEXINGTON LEADER
(Evening)

SUNDAY HERALD-LEADER

NEW SUPER MARKETS

3 STORES

B. WAY
AND
MAXWELL
PHONE
3-1525 - 3-1524

462
GEO. TOWN
PHONE
2-8454

1192 N. LIME
PHONE
4-2062
LEXINGTON, KY.

WE DELIVER



TAYLOR TIRE CO., INC.

Phone 2-7127

24 hour emergency road service

Vine at South Eastern

Lexington, Kentucky

Dodge

GOODWIN BROS.

Your Dependable
Dodge and Plymouth
Dealer
Since 1916



Compliments

R. R. DAWSON

BRIDGE CO.

Compliments
of

STANLEY PENN FEED

753 West Pine St.

Phone 2-8929

Compliments

of

J. W. HARPER

Compliments

of

CHEROKEE PHARMACY

1701 S. Lime Lexington, Ky.

Phones 2-0303 or 2-9481

Compliments

of

H. C. ADAMS

Contractor

Compliments

Compliments

of

A FRIEND

LOOM AND NEEDLE

TATTERSALLS

"GREATEST NAME IN HORSE SALES"

COMPLIMENTS

OF

WLAP

CITIZENS BANK & TRUST CO.
LEXINGTON-KENTUCKY

MEMBER FEDERAL DEPOSIT INSURANCE CORPORATION

Compliments

of

FOUSHEE FLORISTS

Henry Foushee

TINDER-KRAUSS-TINDER

Opticians

Photographic Supplies

145 North Upper Street

Lexington, Kentucky

Compliments

of

BARROWMAN'S

Be Better Fitted In--

BAYNHAM'S

"Shoes of Distinction"

for

.Men . Women.

Children

Compliments
of
HOLTON, FARRA COMPANY

Investment Securities
Members Midwest Stock Exchange
Lexington, Kentucky

Exchange Building Telephone
151-153 North Upper Street 2-1858

**FRED BRYANT
MOTOR CO.**

OLDSMOBILE

Compliments
of
TERMINIX COMPANY

220 Walnut Street
Lexington, Kentucky

Compliments
of
C. D. MORRIS

Twyn Springs Farm Morris Arcade
Lexington, Kentucky and Apts.
Frankfort, Kentucky

Compliments of
LYLE'S MARKET
Quality - Kentucky Food Store
555 S. Upper Facing Euclid

Frank L. McVey W. H. Clark Dan D. Brock

BROCK-McVEY CO.

INCORPORATED
WHOLESALE DISTRIBUTORS OF
PLUMBING, HEATING AND TINNERS' SUPPLIES
VINE AND SOUTHEASTERN STREETS
TELEPHONE 3-0765
LEXINGTON 34, KENTUCKY

Compliments of
HOWARD AND HEAFEY
FLORISTS
Winchester Pike Phone 2-5633

Compliments of
TEMPLEMAN
PIANO CO.

"Where Musicians"
and
"Music Loving People"
Have Dealt for Generations
This we appreciate!

"Everything in Music"

LAD AND LASSIE SHOP
Fine Clothes for Children
877 E. High Street

Compliments
of
SHUG GLENN



COMPLIMENTS

OF

W. E. HUTTON AND CO.

Let

Jean Sardou Portraits

record *all* the important

events in your life

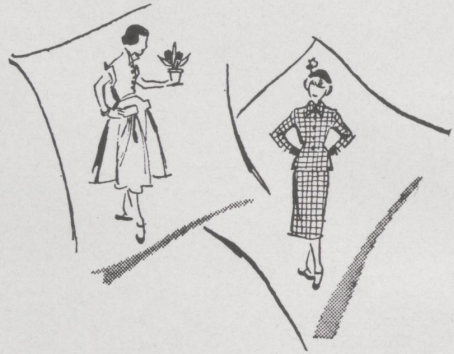
Your Official Photographer

Jean Sardou Studio

3rd Floor

Wolf Wile's

It's WOLF WILES' for
the newest fashions
found in Mademoiselle. . .
Seventeen. . . Charm. . . Glamour. . .
and Senior Prom.



Girls and Teen sizes. . . Third floor
Junior sizes. . . Second floor

Wolf Wiles

Compliments
of

THE GOLDEN HORSESHOE

LEXINGTON, KENTUCKY

Compliments
of
CONGLETON LUMBER CO.
INCORPORATED
Lexington, Kentucky

Compliments
of
VELVET ICE CREAM CO.
Excellent Fountain Service
Curb Service
Fine Sandwiches
Wholesale - Retail
710 E. Main St. Telephone 2-9644

Compliments
of
DIXIE ICE CREAM CO.

Compliments

of

CRANFILL-FREY

Compliments
of
JERRY'S
357 South Limestone
JERRY'S DRIVE-IN
E. Main and Walton Ave.



PATRONIZE YOUR
YEARBOOK ADVERTISERS



W. T. CONGELTON
Incorporated
Central-Mixed Concrete
Walton Avenue Telephone 4-6060

Compliments
of
L. L. ROBERTS
FURNITURE CO.

Compliments
of
McDONALD CLEANERS

Compliments
of
JAMES PARK

Compliments
of
TOMMY DUVALL
Rose and Lime Phone 3-1360
Service is my Business

Compliments
of
ALLEN-HARPER ELECTRICAL
ENGINEERING CORP.
Fixtures and Motors
Air Conditioning
Phone 2-7919 206 South Lime
Lexington, Ky.

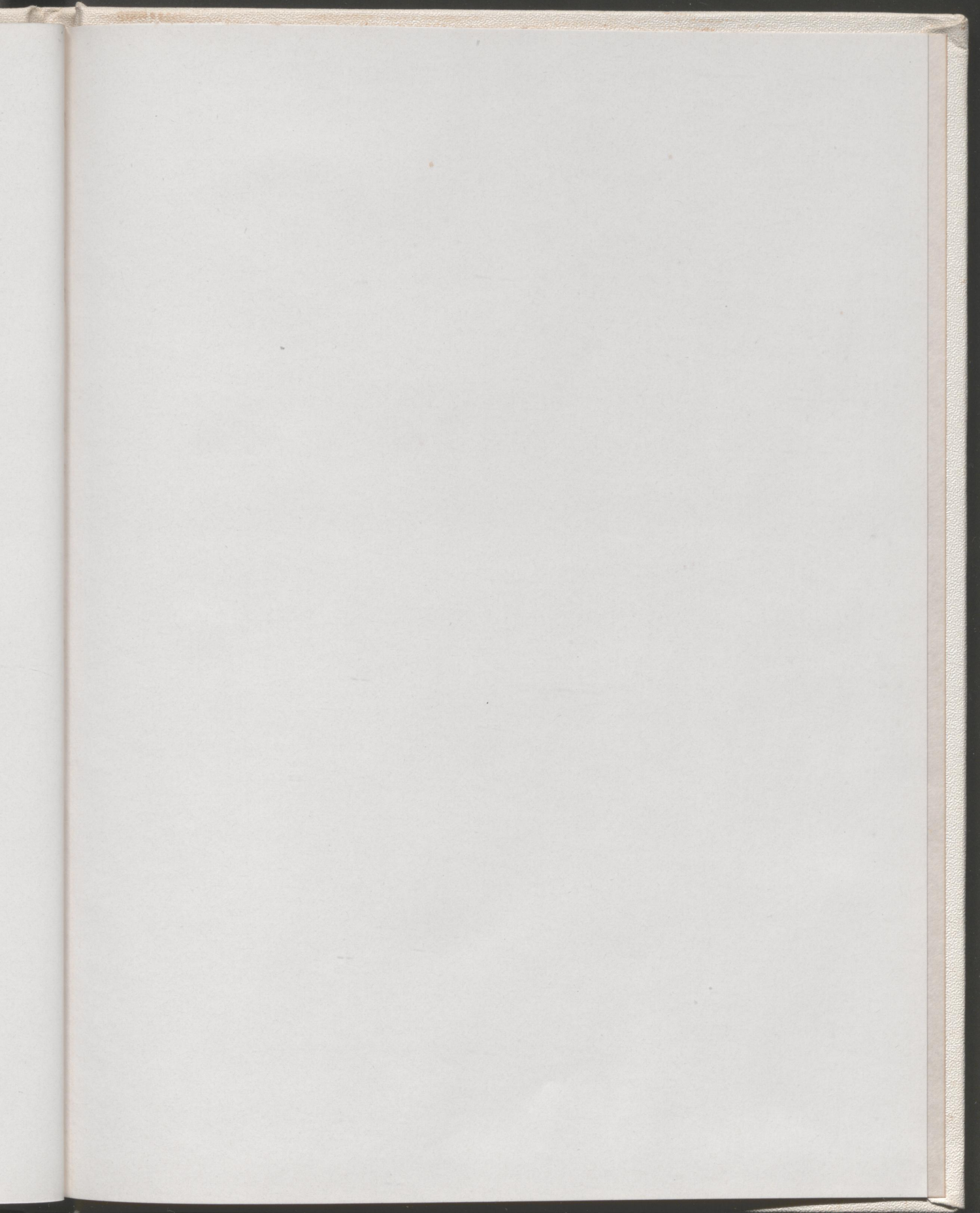


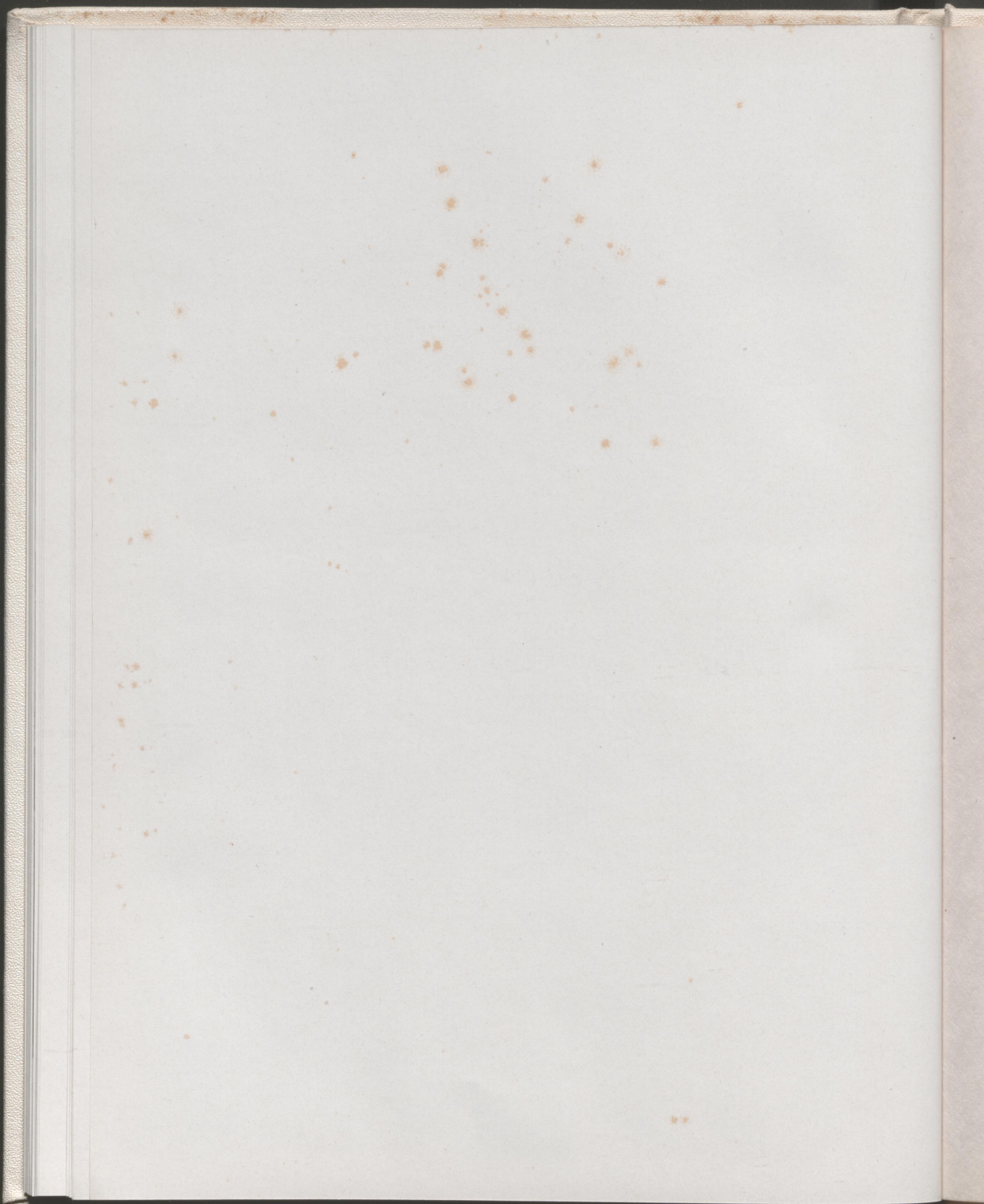
PATRONIZE YOUR
YEARBOOK ADVERTISERS



he
#









MYERS *deep-tone* YEARBOOKS

THE PACEMAKERS OF QUALITY

MYERS AND CO. INC.

TOPEKA, KANSAS

