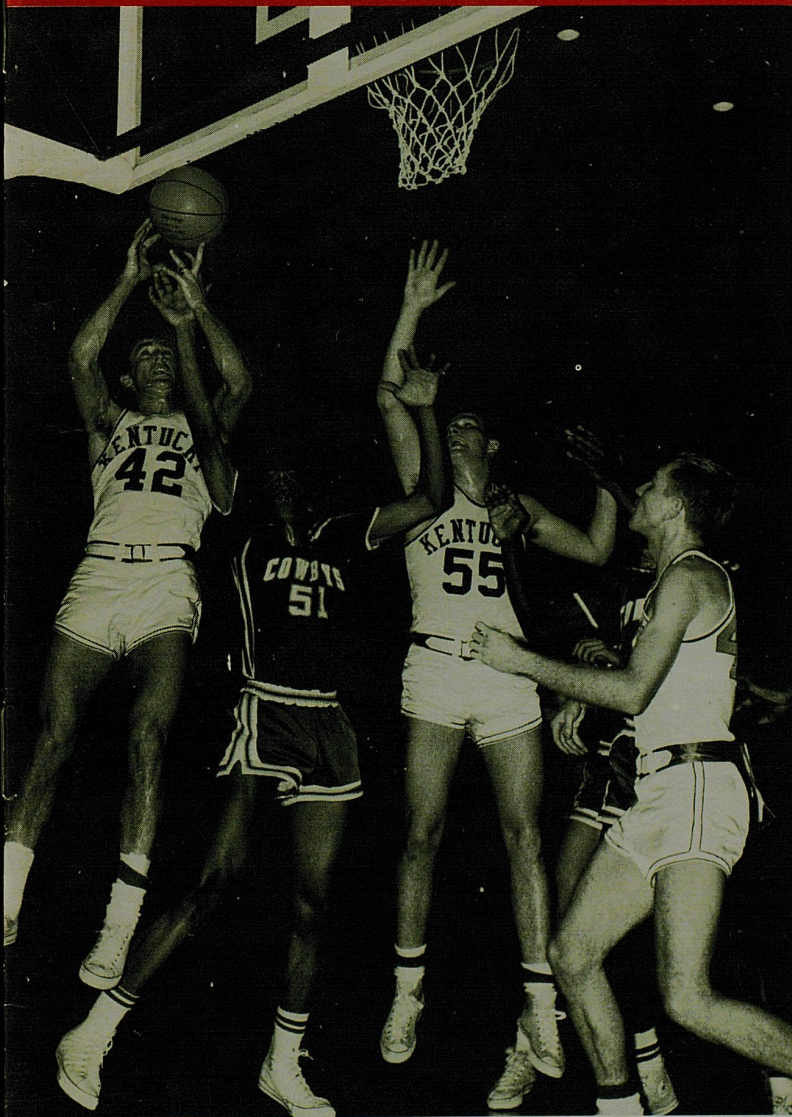


The Wildcat TIP-OFF



OFFICIAL PROGRAM — 25 CENTS
Established Price24; Tax01



Copy 2

Kentucky

(Wildcats)

VS

Northwestern

(Wildcats)

LEGISLATURE NIGHT

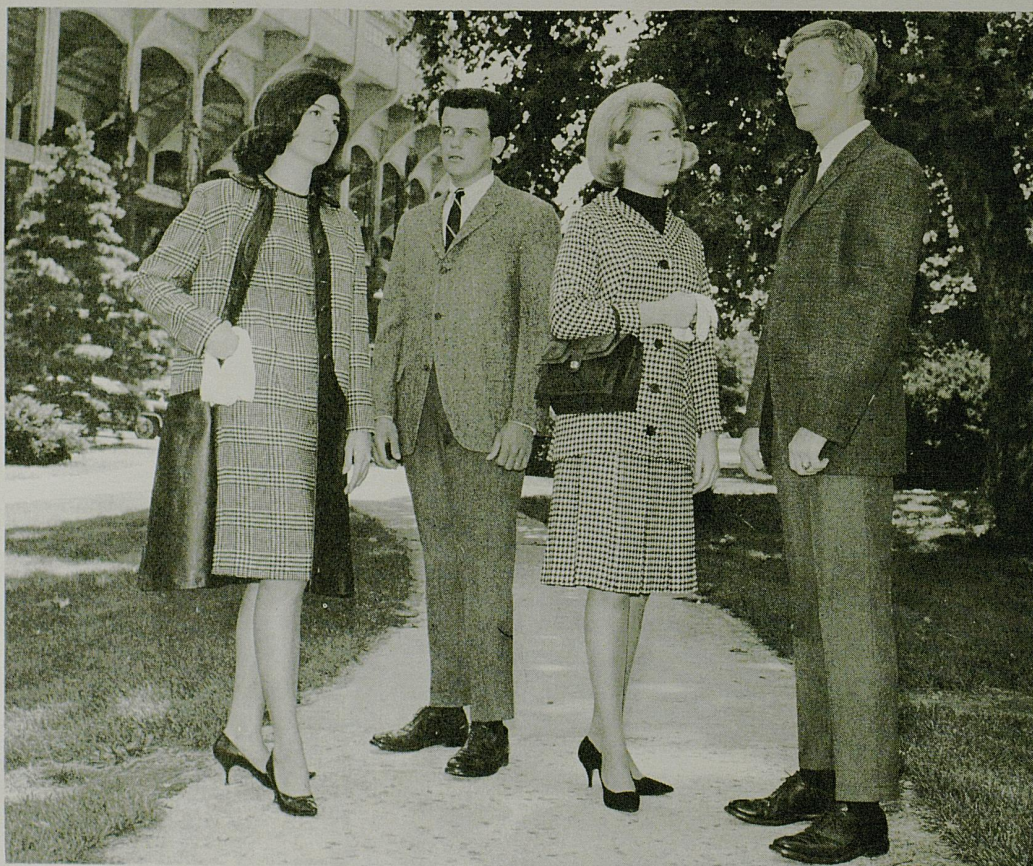
MEMORIAL COLISEUM

DECEMBER 11 • 1965

EXCLUSIVELY
Dawahare's

- LEXINGTON
- WHITESBURG
- PIKEVILLE
- HAZARD
- NEON
- CORBIN

Gardenside Plaza



PLENTY FREE PARKING

**OPEN EVERY NIGHT
'TIL 9 O'CLOCK**

First National Charge
30 Day Charge—
6 Month Revolving Charge



Also available at Dawahare's
WILDCAT BOOSTER TIES
Pure Silk

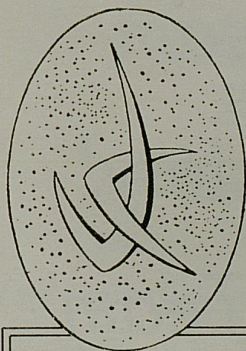
THIS IS THE PATHWAY TO THE STARS

UNIVERSITY of KENTUCKY

centennial salute

For 100 years the University of Kentucky has made vast contributions to the rapid growth and progress of the great Commonwealth of Kentucky, and we at Purcell's would like to extend our congratulations during this, their Centennial Year.

The University of Kentucky is the Alma Mater for thousands of graduates and former students who are now residing in Kentucky, and we are very proud and happy to offer this special salute for her one hundred years of dedicated service.



The "WILDCAT"

by **WINTHROP** 
SHOES FOR MEN



Smartly Styled
OXFORDS or SLIP-ONS

10⁹⁵
pair

- ★ Black Leather
- ★ Men's Sizes:
6½ to 12
- ★ Wildcat Juniors:
3½ To 6
- ★ B-C-D Widths

Men's Shoe Center
Main Floor

Purcell's

CENTRAL KENTUCKY'S SMARTEST STORE SINCE 1887



*Bank On The Wildcat Team
For Another Big Blue Victory!
. . . and Bank On Our 'Team'
Of Over 300 Employees
For The Best In
Complete Banking Services
At 7 Convenient Locations!*

First Security
NATIONAL BANK AND TRUST COMPANY

Member FDIC

Member Federal Reserve System

The Wildcat Tipoff

Official Kentucky Basketball Program

Published by U.K. Athletics Association

B. A. SHIVELY, Athletic Director

KEN KUHN, Sports Information Director

NEXT HOME GAME

Thirteenth Annual

U.K. INVITATIONAL TOURNAMENT

Memorial Coliseum — December 17-18, 1965

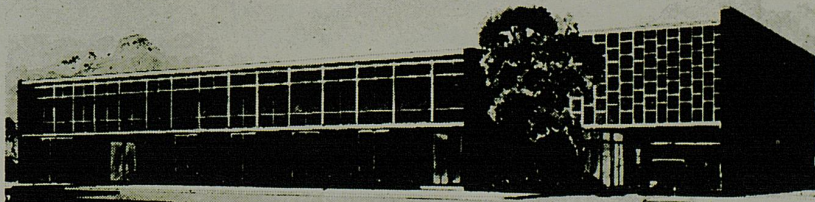
First Night: California vs. Indiana—7:30 p.m.

Second Night: Third Place Game—7:30 p.m.

Air Force vs. Kentucky—Appx. 9:30 p.m.

Championship Game—Appx. 9:30 p.m.

The Downtowner Motor Hotel



LEXINGTON'S FINEST — 155 ROOMS — RESTAURANT — COCKTAIL LOUNGE — CONFERENCE ROOMS
PARK AT YOUR FRONT DOOR — TV — HI-FI — RADIO — PHONES — SWIMMING POOL
347 EAST MAIN — JUST EAST OF ROSE

SOUTHLAND SPORT SHOP

Distributors of

Riddell, Spanjian, Hyde, Rawlings, Wilson, and Spalding Sporting Goods

Adidas Track Shoes

Cramer Products

Plenty of Free Parking Space

Gene Stokley — In The Southland Shopping Center — Dick Wallace

P.O. BOX 8251

PHONE 277-3977



KENTUCKY CENTRAL

Interesting facts about
Kentucky Central
Life Insurance Company

HOME OFFICE: LEXINGTON

AGE - - Founded 1902, Kentucky's oldest life insurance company.

EMPLOYEES - - 1,500 nationwide, 350 in Lexington.

SCOPE OF OPERATIONS - - 100 branch offices serving 35 states.

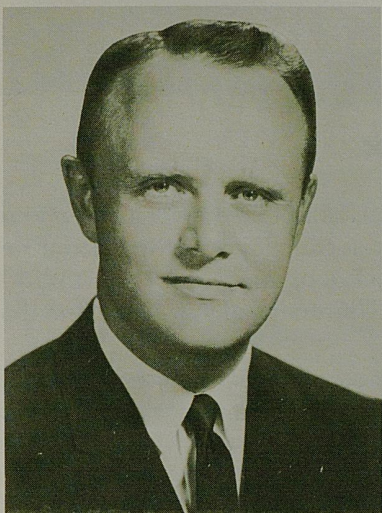
FINANCIAL STRENGTH - - \$73 million in policy reserves, capital and surplus of \$25 million.

SIZE - - More than \$806 million of life insurance in force.

NATIONAL RANKING - - In the top nine percent of the nation's 1,700 life insurance companies.

RECOMMENDATION - - Recommended for 17 consecutive years by the Alfred M. Best Company, New York, national insurance rating authority.

PRODUCTS - - All types of life and health insurance for individuals, families and groups, and fire insurance through a subsidiary.



UK Administration

GOVERNOR NED BREATHITT, the Commonwealth's chief executive and chairman of the Board of Trustees, is a graduate of the University of Kentucky and above all labels himself as a champion of education in the state. The articulate, 40-year-old Hopkinsville attorney entered UK in 1942 with thoughts of a career in politics and government uppermost in his mind. He earned degrees in commerce and law after serving nearly three years in the Army Air Force during World War II. Governor Breathitt's background includes three terms (1953-56) in the House of Representatives and several governmental positions.

————— K —————



PRESIDENT JOHN W. OSWALD took over as administrative head of Kentucky's state university only two short years ago but has already proven himself one of the nation's most able educational leaders. Dr. Oswald, at the age of 47, is a man ideally equipped in academic and general background to guide U.K. into its second century. He holds academic degrees from De Pauw and University of California and is well acquainted with athletics at all levels. The UK president served as captain of the 1937 De Pauw football team and later, at UC, coached the Davis campus gridders for three years as an avocation. Dr. Oswald, a plant pathology specialist, came to U.K. from a position as vice-president-administration at California. He was honored in 1962 by selection on the Silver Anniversary All-America team chosen by Sports Illustrated.

————— K —————



ATHLETIC DIRECTOR BERNIE SHIVELY, a former All-America footballer at Illinois, is the guiding hand behind the development of UK as a nationally-respected power in the field of intercollegiate athletics. Serving in a variety of posts at the University since 1927, including terms as coach of football, track and baseball, "Shive" has been director of Athletics since 1938. In this position, he administers a harmonious program of activity in 10 different sports that feature more than 500 athletes in action almost the year around before audiences that exceed a half million persons and involving facilities valued at several million dollars. Shively has gained national recognition for his administrative excellence and fair-minded approach to many problems.



THE BARON OF BASKETBALL



The nation's winningest basketball coach for nearly four decades and one of the most colorful figures in the game today . . . That's Baron Adolph Rupp, who this season is working at producing a winner at University of Kentucky for the 36th year.

Able to boast of a nation-leading career percentage of 83 percent success in his chosen profession, Coach Rupp has guided the Wildcats since 1930—and never had a losing season.

Few major goals of the coaching profession have escaped the grasp of this 64-year-old veteran, feared and respected by opponents and beloved by millions of fans to whom he is known familiarly as "The Man In The Brown Suit." The appellation was tagged on Rupp years ago in tribute to his

supersticious preference of brown as the color of his game-night wardrobe.

In his own backyard (the Southeastern Conference) Rupp is generally regarded as the prime benefactor of Dixie basketball—having goaded loop schools into providing better places to play, recruiting better boys and giving more emphasis to the sport. His success in raising the stature of southern cage play has "come back to haunt" Rupp in the form of stiffer competition both on the court and recruiting battleground.

But Coach Rupp professes no regrets and his achievements serve as a buffer that is not likely to be broken down for many a year to come. Those achievements make a list too long to recount entirely. However, a few of the man's major accomplishments include:

- 720 victories in 870 starts.
- Membership in the ultra-exclusive "700 Club" (700 career victories) at the earliest stage of any coach.
- An unprecedented four NCAA titles.
- A record 21 conference championships.
- Top world honors as he helped guide the USA entry to success in the 1948 Olympics.
- Twice chosen national "Coach of the Year" and enrolled in Hall of Fame.
- Producer of more All-Americans (22 players honored 32 times), more Olympic gold medallion winners (7) and more material for the pro ranks (22 players) than any other coach.
- Membership on the national basketball rules committee.

R

"No Order Too Small"

R

Sageser Drugs

in SOUTHLAND

R

"Ask Your Doctor"

R

Full Color **WLEX-18** Presents

Basketball With Rupp

Sun. Nights - 6:30

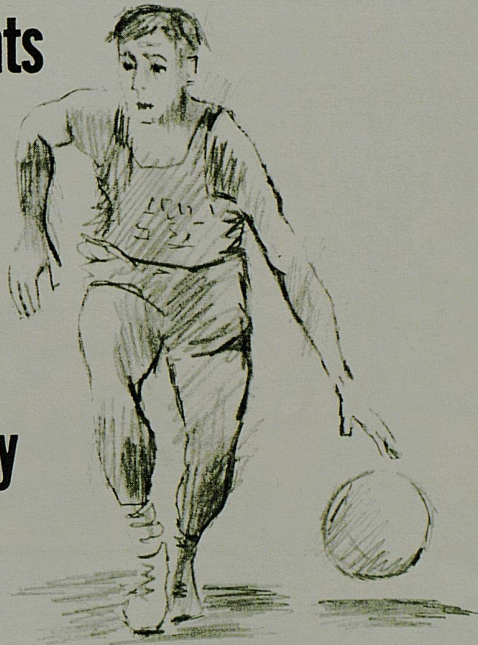
with

Coach Adolph Rupp & Bob Terry

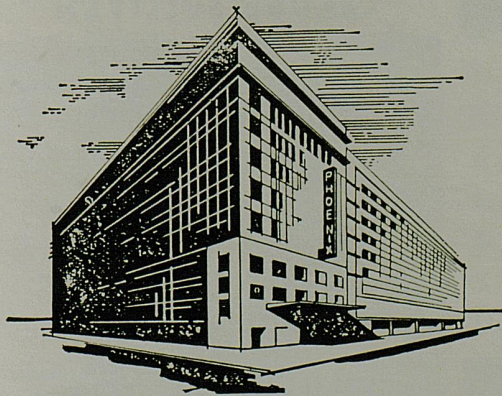
Cornett Const. Co.

Goodwin Bros. Inc.

Keller Implement Co.



Headquarters For Visiting Teams And Fans



Kentucky's Convention
Headquarters
120 E. Main St.
Downtown Lexington, Ky.
Phone 255-3210

FEATURING

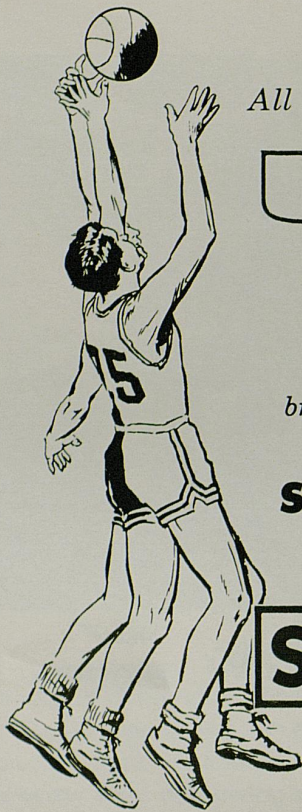
Le Deauville

RESTAURANT

and LOUNGE

- FREE PARKING
- BEVERAGE & FREE ICE MACHINE
ON EACH GUEST FLOOR
- 100% AIR CONDITIONED
- TV IN ALL ROOMS
- ALL ROOMS REMODELED
AND REDECORATED
- COFFEE SHOP AND DINING ROOM
WITH ECONOMICAL PRICES

PHOENIX HOTEL



All 1965-66 Basketball Games of

U. OF K.

with Claude Sullivan

brought to



you on the

**STANDARD OIL
NETWORK**

**STANDARD
OIL**

WINN **WCTT**
LOUISVILLE CORBIN

WFKY **WKIC**
FRANKFORT HAZARD

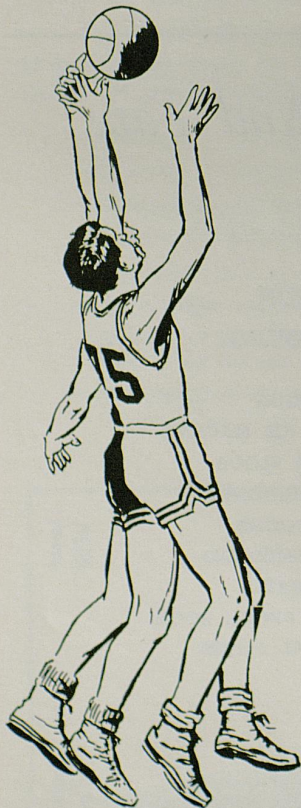
WHOP **WVLK**
HOPKINSVILLE LEXINGTON

WCMJ **WOMI**
ASHLAND OWENSBORO

WDXR **WPKE**
PADUCAH PIKEVILLE

WSIP **WFTM**
PAINTSVILLE MAYSVILLE

WSFC
SOMERSET



WVLK

The Originating
STATION for

**ALL U. K.
BASKETBALL**
on the
**STANDARD OIL
BASKETBALL
NETWORK**

WVLK - CBS

DIAL 590
FOR 24 HOUR A DAY RADIO

*Play by Play at
Home and Away*

with
CLAUDE SULLIVAN





FRONT ROW (left to right)—Jim Burns, John Martz, Jim Pitts, Ron Kozlicki, Walter Tiberi. BACK ROW—Jerry Nelson, Jim Cummins, Coach Larry Glass, Jim Printen, Mike Weaver, Vernon Ford.

NORTHWESTERN UNIVERSITY ROSTER

No.	Name	Pos.	Class	Ht.	Wt.	Hometown
15	Jim Pitts	C	Sr.	6-8	215	Chicago, Illinois
22	Don Anderson	F	Soph.	6-3	190	Woodstock, Illinois
32	Jim Cummins	F	Jr.	6-3	200	Cedar Rapids, Iowa
34	Jerry Nelson	G	Sr.	6-1	175	Valparaiso, Ind.
35	Jim Burns	G	Jr.	6-4	190	McLeansboro, Illinois
42	Walt Tiberi	G	Jr.	6-1	175	Chicago Heights, Illinois
43	Ron Kozlicki	F	Jr.	6-6	205	Palatine, Illinois
45	Mike Weaver	F	Soph.	6-5	200	Huntington, Ind.
50	Dave Milam	G	Sr.	6-1	185	Lebanon, Ind.
51	John Printen	C	Sr.	6-7	225	Chicago, Illinois
53	Vernon Ford	G	Soph.	6-1	180	Chicago, Illinois
54	John Martz	F	Sr.	6-4	200	Webster Groves, Mo.

HEAD COACH—Larry Glass (2 Years at NW—Won 15, Lost 30)

Nickname—Wildcats

Location—Evanston, Illinois

Ath. Director—Stuart K. Holcomb

1964-65 Record—Won 7, Lost 17

Colors—Purple and White

Enrollment—6,800

Conference—Big Ten

Series—UK leads, 2-0, since '62

NORTHWESTERN SCORECARD

		FG								FT								PF		TP	
15	JIM PITTS 6-8 Sr. Center	1	2	3	4	5	6	7	8	1	2	3	4	5	6	7	1	2	3	4	5
		9	10	11	12	13	14	15	8	9	10	11	12	4	5						
22	DON ANDERSON 6-3 Soph. Forward	1	2	3	4	5	6	7	8	1	2	3	4	5	6	7	1	2	3	4	5
		9	10	11	12	13	14	15	8	9	10	11	12	4	5						
32	JIM CUMMINS 6-3 Jr. Forward	1	2	3	4	5	6	7	8	1	2	3	4	5	6	7	1	2	3	4	5
		9	10	11	12	13	14	15	8	9	10	11	12	4	5						
34	JERRY NELSON 6-1 Sr. Guard	1	2	3	4	5	6	7	8	1	2	3	4	5	6	7	1	2	3	4	5
		9	10	11	12	13	14	15	8	9	10	11	12	4	5						
35	JIM BURNS 6-4 Jr. Guard	1	2	3	4	5	6	7	8	1	2	3	4	5	6	7	1	2	3	4	5
		9	10	11	12	13	14	15	8	9	10	11	12	4	5						
42	WALT TIBERI 6-1 Jr. Guard	1	2	3	4	5	6	7	8	1	2	3	4	5	6	7	1	2	3	4	5
		9	10	11	12	13	14	15	8	9	10	11	12	4	5						
43	RON KOZLICKI 6-6 Jr. Forward	1	2	3	4	5	6	7	8	1	2	3	4	5	6	7	1	2	3	4	5
		9	10	11	12	13	14	15	8	9	10	11	12	4	5						
45	MIKE WEAVER 6-5 Soph. Forward	1	2	3	4	5	6	7	8	1	2	3	4	5	6	7	1	2	3	4	5
		9	10	11	12	13	14	15	8	9	10	11	12	4	5						
50	DAVE MILAM 6-1 Sr. Guard	1	2	3	4	5	6	7	8	1	2	3	4	5	6	7	1	2	3	4	5
		9	10	11	12	13	14	15	8	9	10	11	12	4	5						
51	JOHN PRINTEN 6-7 Sr. Center	1	2	3	4	5	6	7	8	1	2	3	4	5	6	7	1	2	3	4	5
		9	10	11	12	13	14	15	8	9	10	11	12	4	5						
53	VERNON FORD 6-1 Soph. Guard	1	2	3	4	5	6	7	8	1	2	3	4	5	6	7	1	2	3	4	5
		9	10	11	12	13	14	15	8	9	10	11	12	4	5						
54	JOHN MARTZ 6-4 Sr. Forward	1	2	3	4	5	6	7	8	1	2	3	4	5	6	7	1	2	3	4	5
		9	10	11	12	13	14	15	8	9	10	11	12	4	5						
		1	2	3	4	5	6	7	8	1	2	3	4	5	6	7	1	2	3	4	5
		9	10	11	12	13	14	15	8	9	10	11	12	4	5						
TOTALS																					

OFFICIALS—TOBY PACE and

19 Other Delicious Sandwiches

Try the
Famous
"Poor Boy"



KENTUCKY SCORECARD

	FG	FT	PF	TP
10 LOUIE DAMPIER 6-0 Jr. Guard	1 2 3 4 5 6 7 8 9 10 11 12 13 14 15	1 2 3 4 5 6 7 8 9 10 11 12	1 2 3 4 5	
12 JIM LeMASTER 6-2 Soph. Guard	1 2 3 4 5 6 7 8 9 10 11 12 13 14 15	1 2 3 4 5 6 7 8 9 10 11 12	1 2 3 4 5	
22 GENE STEWART 6-2 Jr. Forward	1 2 3 4 5 6 7 8 9 10 11 12 13 14 15	1 2 3 4 5 6 7 8 9 10 11 12	1 2 3 4 5	
24 BOB TALLENT 6-1 Soph. Guard	1 2 3 4 5 6 7 8 9 10 11 12 13 14 15	1 2 3 4 5 6 7 8 9 10 11 12	1 2 3 4 5	
25 TOMMY PORTER 6-3 Soph. Forward	1 2 3 4 5 6 7 8 9 10 11 12 13 14 15	1 2 3 4 5 6 7 8 9 10 11 12	1 2 3 4 5	
30 TOMMY KRON 6-5 Sr. Guard-Forward	1 2 3 4 5 6 7 8 9 10 11 12 13 14 15	1 2 3 4 5 6 7 8 9 10 11 12	1 2 3 4 5	
32 STEVE CLEVINGER 6-0 Soph. Guard	1 2 3 4 5 6 7 8 9 10 11 12 13 14 15	1 2 3 4 5 6 7 8 9 10 11 12	1 2 3 4 5	
40 LARRY CONLEY 6-3 Sr. Forward	1 2 3 4 5 6 7 8 9 10 11 12 13 14 15	1 2 3 4 5 6 7 8 9 10 11 12	1 2 3 4 5	
42 PAT RILEY 6-3 Jr. Forward	1 2 3 4 5 6 7 8 9 10 11 12 13 14 15	1 2 3 4 5 6 7 8 9 10 11 12	1 2 3 4 5	
44 BRAD BOUNDS 6-5 Jr. Center	1 2 3 4 5 6 7 8 9 10 11 12 13 14 15	1 2 3 4 5 6 7 8 9 10 11 12	1 2 3 4 5	
45 CLIFF BERGER 6-8 Soph. Center	1 2 3 4 5 6 7 8 9 10 11 12 13 14 15	1 2 3 4 5 6 7 8 9 10 11 12	1 2 3 4 5	
50 GARY GAMBLE 6-4 Soph. Forward	1 2 3 4 5 6 7 8 9 10 11 12 13 14 15	1 2 3 4 5 6 7 8 9 10 11 12	1 2 3 4 5	
54 LARRY LENTZ 6-8 Sr. Center	1 2 3 4 5 6 7 8 9 10 11 12 13 14 15	1 2 3 4 5 6 7 8 9 10 11 12	1 2 3 4 5	
55 THAD JARACZ 6-5 Soph. Center	1 2 3 4 5 6 7 8 9 10 11 12 13 14 15	1 2 3 4 5 6 7 8 9 10 11 12	1 2 3 4 5	
TOTALS				

Y PACE and JOHN PAYAK

Curb Service — Rain or Shine

★ PARKETTE DRIVE IN ★

No. 1 — Northeast Beltline . . On Bypass 25 — Phone 254-8723

No. 2 — Off Beltline Georgetown Rd. U.S. 25 — Phone 252-8617

110-Seat, New DINING ROOM At No. 2

————— NOW SERVING KENTUCKY FRIED CHICKEN —————

SWIMMING POOL — TELEPHONES — TELEVISION — AIR CONDITIONED

Ranch Motel

ROBERT LUTES, Owner

1133 WINCHESTER ROAD—EASTERN CITY LIMITS, U.S. 60
LEXINGTON, KENTUCKY



PHONE 252-0777

NEW AND USED BOOK CENTER ON CAMPUS

University Book Store

LOCATED IN THE STUDENT CENTER



- 28 Different Varieties of Pancakes & Waffles
- Businessman's Luncheon Mon. thru Friday
- Steaks, Chops, Chicken, Seafood Also Available
- Dine In An Early American Atmosphere
- Special Family Nights & Childrens Portions
- Informal, Friendly Service
- Private Dining Room For Parties, Clubs, Banquets, Etc.

BILL ELLIS — Manager

DIAL — 254-7835

Located On U.S. 27 At S. Lime and Rose Sts.
Across From U. of Ky. Medical Center

*"Stop in Whenever Your Appetite
Craves a Treat"*

LEXINGTON TRANSIT CORP.

Avoid "Parking Temper"

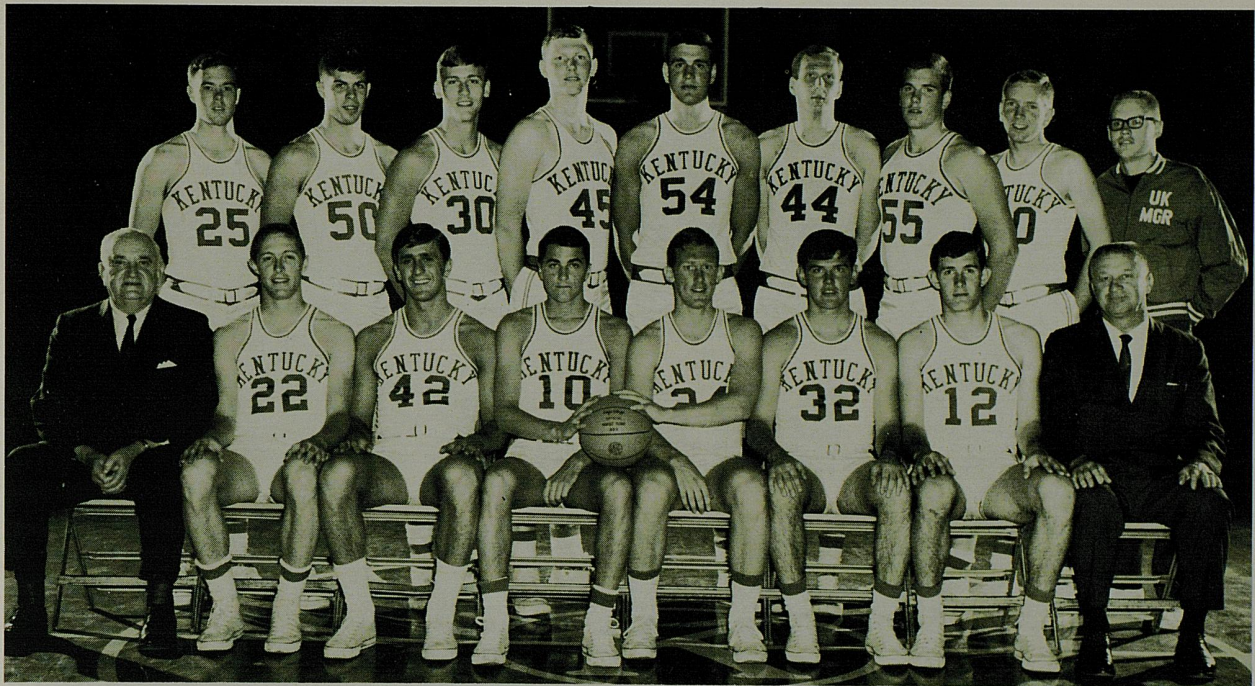


RIDE THE BUS
TO THE GAME

Charters For All Occasions



Phone
255-6470



FRONT ROW (left to right)—Head Coach Adolph Rupp, Gene Stewart, Pat Riley, Louie Dampier, Bob Tallent, Steve Clevenger, Jim LeMaster and Assistant Coach Harry Lancaster. BACK ROW—Tommy Porter, Gary Gamble, Tommy Kron, Cliff Berger, Larry Lentz, Brad Bounds, Thad Jaracz, Larry Conley, and Student Manager Mike Harreld.

UNIVERSITY OF KENTUCKY VARSITY ROSTER

(WILDCATS)

No.	Name	Pos.	Class	Exp.	Age	Ht.	Wt.	Hometown
10	Louie Dampier	G	Jr.	1VL	20	6-0	167	Indianapolis, Ind.
12	Jim LeMaster	G	Soph.	FN	18	6-2	188	Paris, Ky.
22	Gene Stewart	F	Jr.	0	20	6-2	187	Brookville, Ind.
24	Bob Tallent	G	Soph.	FN	19	6-1	179	Langley, Ky.
25	Tommy Porter	F	Soph.	FN	19	6-3	188	Gracey, Ky.
30	Tommy Kron	G-F	Sr.	2VL	21	6-5	202	Owensboro, Ky.
32	Steve Clevenger	G	Soph.	FN	19	6-0	185	Anderson, Ind.
40	Larry Conley	F	Sr.	2VL	21	6-3	172	Ashland, Ky.
42	Pat Riley	F	Jr.	1VL	20	6-3	205	Schenectady, N. Y.
44	Brad Bounds	C	Jr.	0	20	6-5	207	Bluffton, Ind.
45	Cliff Berger	C	Soph.	FN	18	6-8	225	Centralia, Ill.
50	Gary Gamble	F	Soph.	FN	18	6-4	185	Earlington, Ky.
54	Larry Lentz	C	Sr.	0	21	6-8	217	Lakeview, Ohio
55	Thad Jaracz	C	Soph.	FN	18	6-5	230	Lexington, Ky.

HEAD COACH—Adolph Rupp (36th Year)

ASSISTANTS—Harry Lancaster and Joe Hall

TRAINER—Richard (Spike) Kerns

STUDENT MANAGERS—Mike Harreld, John Stewart, and Bob Barton

WILDCATS



MIKE WEAVER — F



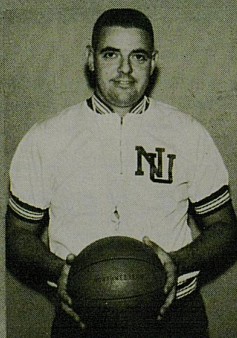
JIM BURNS — G



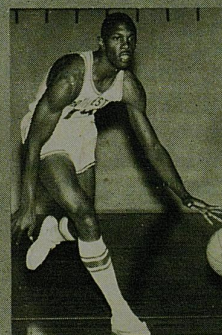
VERNON FORD — G



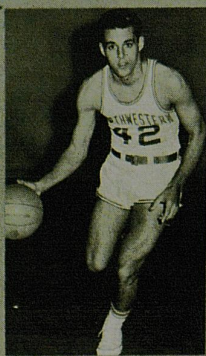
JOHN MARTZ — F



LARRY GLASS — Coach



JIM PITTS — C



WALTER TIBERI — G



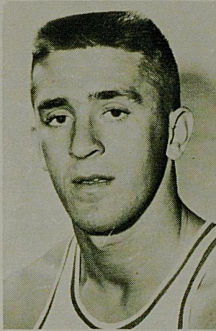
JIM CUMMINS — F



LARRY NELSON — G



RON KOZLICKI — F



MEET A WILDCAT

PAT RILEY
Junior Forward
Schenectady, N. Y.

When Pat Riley walked humbly up to the rostrum last March to accept the "Most Valuable Player" trophy of his team and later was awarded a special "110 Percenter" trophy, the story of the stellar sophomore was signified better than words could describe.

Riley was a tremendous and valuable competitor in his break-in varsity season—just as his great schoolboy reputation at Linton High in Schenectady, N. Y., had indicated. Following a sensational career that saw Riley gain All-America recognition in both basketball and football, he was on the "wanted" list of virtually every school in the nation. Scored an even 1,000 points in three years—four shy of record set at Linton by NYU All-America Barry Kramer in 10 more games.

Alternated between forward and center as UK freshman to score at 20.8 clip. In double figures every time out to contain high school record of 34 straight "doubles." String broken at 54 early last season, but Riley doubled on all except four occasions. No. 2 UK and 10th SEC scorer (375-15.0), and third in UK rebounding (212-8.5) as starting forward all 25 games.

Likely to operate chiefly at forward again, but may be pressed into service to jump center if other candidates fail to come through. Handled chore some last season, often getting tip on bigger men. Second team Academic All-Conference. Father is former minor league baseball manager.

After early season action, Riley has proven himself as probably the most valuable operative on the 1965-66 team.



Springs Motel

2020 South Broadway PHONE 277-5751 Lexington, Kentucky

ENJOY COCKTAILS IN THE RESTFUL
"NEPTUNE LOUNGE"

DINE IN THE "POMPEI ROOM"
PRIVATE DINING FACILITIES FOR GROUPS OF 200-300

Entertainment nightly—9:00-1:00 Cocktail hour—4:00-6:00



Contemporary or Early American at its best

ROBERTS

Furniture Company

ESTABLISHED 1893

FREE PARKING AT SIDE DOOR, 425 W. MAIN ST. . . . OPEN MONDAY NIGHTS 'TIL 9 P.M.



**Two Locations
To Serve You Better**

**MARLOWE
TIRE CO., INC.**

851 North Broadway
Phone 252-1786

And Now Also At

707 Lane Allen Road
Lafayette Shopping Center
Phone 278-3406

GENERAL ELECTRIC APPLIANCES

Kennedy Book Store

U.K. Shirts — Pennants — Decals
Textbooks — School Supplies

BECKER

LAUNDERERS CLEANERS

5 Convenient Locations

Our Newest Location—Southland Shopping Center—Next to Sageser Drug

NOBODY can Launder a Shirt like **BECKER**

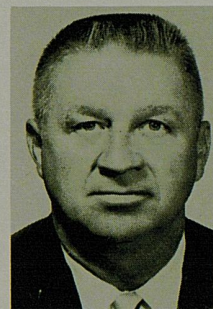
Turf Catering Co.

"SERVING STOLL FIELD AND MEMORIAL COLISEUM"

DELICIOUS HOT DOGS — COLD DRINKS — POPCORN
PEANUTS — CIGARETTES — CANDY
YOUR PATRONAGE KINDLY SOLICITED

Assistant Coach HARRY LANCASTER

Recognized as one of the top assistant coaches in the profession, Harry Lancaster has served in the capacity of chief aide to Baron Adolph Rupp since 1946. Among his various duties, the Paris (Ky.) native spends much time scouting future opponents of the Wildcats, recruiting some of the best schoolboy talent in the nation and coaching with much success the UK freshman cage team. Lancaster in the past 15 seasons has guided the Kittens to a record of 170 wins and only 36 losses. Harry is a graduate of Georgetown (Ky.) College, where he was an all-around sports standout in early thirties. An All-Conference halfback in football three straight years, his grid career almost overshadowed his play on the basketball court. Even though he considered himself a better gridder than basketeer, he starred in basketball with an equal number of All-Conference selections and wisely chose to stick with the cage sport as a career. Lancaster spent nine years as a high school principal and coach before coming to UK in 1942 as a physical education instructor.



Assistant Coach JOE HALL

Former Kentucky basketeer Joe Hall of Cynthiana, who proved himself a successful coach for nine years, joined the cage staff of Adolph Rupp last July. The new Wildcat aide transferred from Central Missouri State College, where he was head coach during the 1964-65 season and posted a 19-6 record enroute to guiding his team to the school's first NIAA Conference championship since 1951. A guard on Coach Rupp's 1949 UK team, Hall entered coaching upon his graduation in 1955. He spent three years at Shephardsville High, twice achieving conference "Coach of the Year" honors, and then moved into collegiate ranks at Regis College. After one season as freshman coach, Joe was elevated to head coach and for five years posted successful records. The 36-year-old Kentuckian also coached the Capital Federal Denver team in the AAU Tournament and later was honored by selection as head coach of the AAU Stripes in the Olympic Trials.



Quality

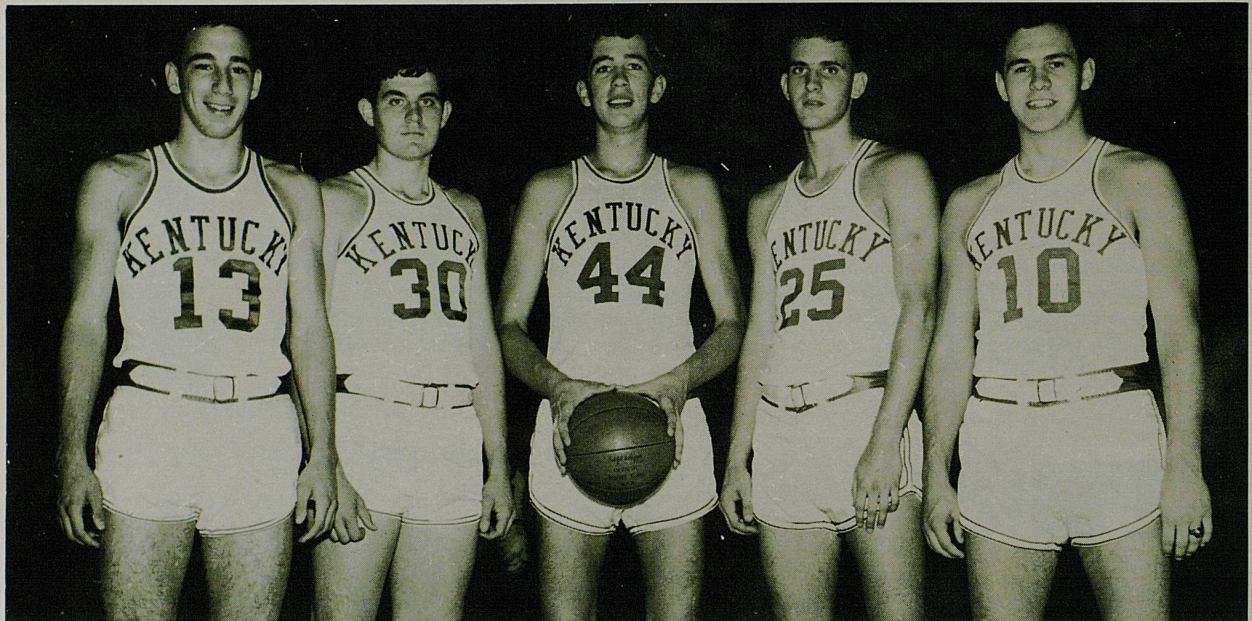
IS ALWAYS YOUR BEST BUY

ANGELUCCI'S
KAUFMAN'S

MEYER'S
GRAVES, COX



THE QUALITY MEN'S STORES OF LEXINGTON



This talented quintet of scholarship performers forms the solid core of the 1965-66 University of Kentucky freshman basketball team. From left to right, they are Phil Argento of Cleveland, Ohio; Larry Hall of Martin; Alvin Ratliff, White House; Gerald Guter of Waterford, N. Y.; and Bobby Hiles, Maysville.

KENTUCKY FRESHMAN ROSTER

No.	Name	Pos.	Age	Ht.	Wt.	Hometown (High School)
10	Robert Hiles	G	18	6-1	190	Maysville, Ky. (Maysville)
11	Fred Phelps	G	18	6-0	150	London, Ky. (London)
13	Phil Argento	G	18	6-0	180	Cleveland, Ohio (West)
14	Larry Wells	G	18	6-0	167	Falmouth, Ky. (Pendleton)
22	Harold Powell	G	19	6-2	180	Liberty, Ind. (Short)
23	Charles Johns	F	19	6-3	180	Cincinnati, Ohio (Johnson)
25	Gerald Guter	F-C	18	6-3	173	Waterford, N. Y. (Troy)
30	Larry Hall	G-F	17	6-1	198	Martin, Ky. (Martin)
31	Jeffrey Kerr	G	18	6-1	170	Titusville, N. J. (Pennington)
32	Chuck Sober	F	18	6-2	180	Louisville, Ky. (Westport)
40	Gary Leonard	G	18	5-10	150	Charleston, S. C. (Garrett)
44	Alvin Ratliff	F	18	6-5	190	White House, Ky. (Meade Mem.)
45	Robert Carr	F	18	6-1	167	Emerson, N. J. (Emerson)
50	Bill Rutledge	G	18	6-1	165	Elkton, Ky. (Todd Co.)
54	Tom Stigger	C	18	6-4	190	Louisville, Ky. (Waggener)

COACH—Harry Lancaster (15 Seasons—Won 170, Lost 36)

ASST. COACH—Joe Hall

STUDENT MANAGERS—Bill Chupill, Alan Theobald, and Lee Johnson

When in need of good quality printing plates or Negatives in fastest time possible



Go To Or Call
Lexington Photo Engraving Co.
 223 W. Short St. — Phone 255-5015
 For All Letterpress Plates

Or



Lexington Photo-Lith, Inc.
 1600 N. Limestone St. — Phone 299-1378
 For Offset Plates and Negatives.

JERRY'S Y.M.C.A. ROSTER

No.	Name	Ht.	Wt.	School
10	Randy Embry	5-10	155	University of Kentucky
11	Kelly Chapman	6-4	170	Texas A&M
13	Scotty Baesler	6-0	175	University of Kentucky
14	Dave Tuamodine	5-10	160	Villa Madonna
20	Jim McDonald	6-4	210	University of Kentucky
21	Larry Pursiful	6-1	190	University of Kentucky
25	Terry Mobley	6-3	190	University of Kentucky
33	Pat Doyle	6-2	180	University of Kentucky
40	Dennis Bradley	6-5	185	Eastern
44	John Adams	6-6	230	University of Kentucky

COACHES—Wayne Bain and Scotty Baesler

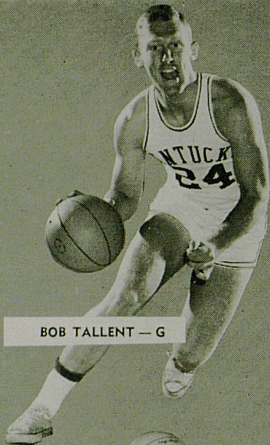


576 E. Third St. — Phone 254-2855

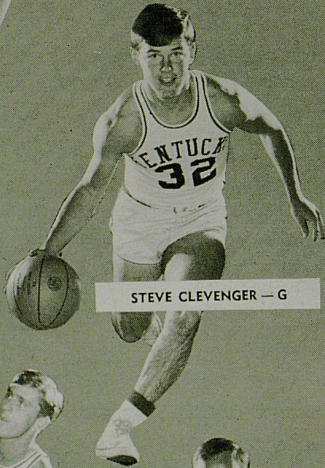
Lexington Insurance Agency, Inc.

Kentucky Central Building
Lexington, Ky.
Phone: 254-6257

WILDCATS



BOB TALLENT — G



STEVE CLEVINGER — G



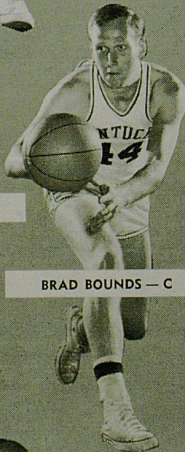
GENE STEWART — F



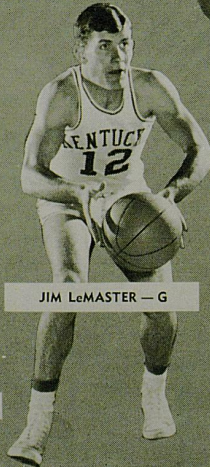
LARRY LENTZ — C



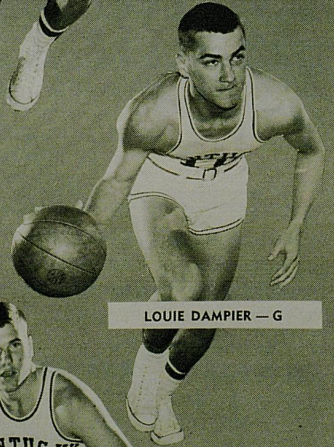
PAT RILEY — F



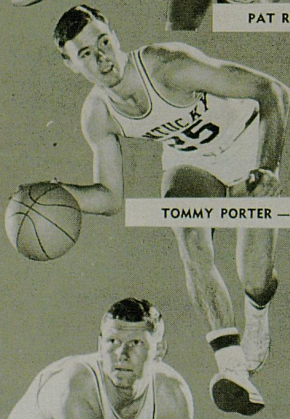
BRAD BOUNDS — C



JIM McMASTER — G



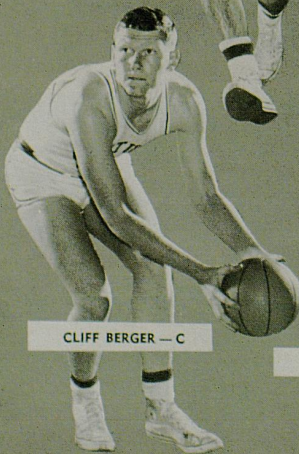
LOUIE DAMPIER — G



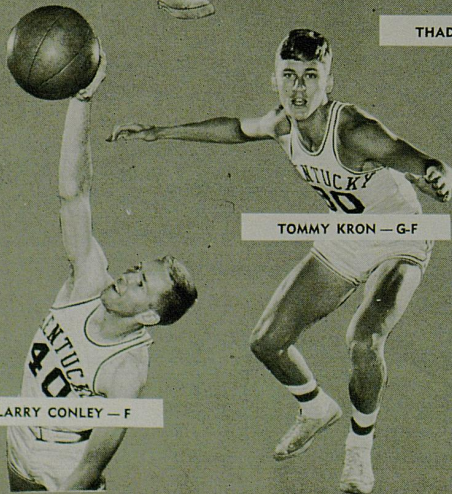
TOMMY PORTER — F



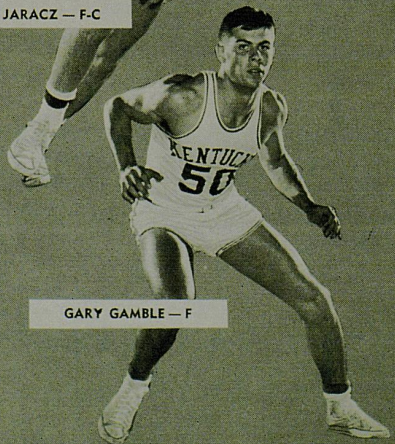
THAD JARACZ — F-C



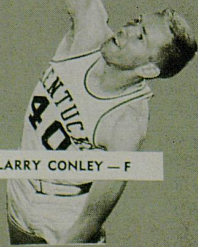
CLIFF BERGER — C



TOMMY KRON — G-F



GARY GAMBLE — F



LARRY CONLEY — F

DeBoor

Laundry Dry Cleaning
Storage

Dixie Bell Dairy Company

**"The Largest and Only Locally
Owned Dairy Serving
Central Kentucky"**

★ ★ ★

**315 North Limestone Street
LEXINGTON, KY.**

You're Always Welcome At . . .

Begley's

WALGREEN AGENCY DRUG STORES

IN LEXINGTON

- ★ 69 Eastland Shopping Center
- ★ 1255 Northland Shopping Center
- ★ 878 East High Street
- ★ 404 Southland Drive
- ★ 1743 Gardenside Shopping Center

SERVING THE BEST IN DRUG STORE NEEDS
SINCE 1921

16 DRUG STORES IN KENTUCKY

5 PHARMACIES

5 GREGORY COLONIAL RESTAURANTS



Is the Big Hamburger going out of the picture ?

Not at... **Jerry's!**

We are old fashioned. We happen to think that a hamburger should be more meat than dressing. At JERRY'S, you don't have to look under the pickle to find the patty. As in any purchase, you get what you pay for; and at **Jerry's!** you get plenty!! There's more meat in every bite with the BIG HAMBURGER at **Jerry's!** After the game, go **Jerry's!**