

# THE UNIVERSITY OF KENTUCKY — BUDGET REQUEST 1988-90



○ Community Colleges

f University of Kentucky Research Farms

● Robinson Forest and Substations



## UNIVERSITY OF KENTUCKY

LEXINGTON, KENTUCKY 40506-0047

October 1987

**To: Governor, Members of the Kentucky General Assembly and  
Members of the Council on Higher Education**

I am pleased to forward to you this brief summary of the University of Kentucky's Biennial Request for 1988-90. The request is based on our recently approved Five Year Plan for 1987-92 and has been developed within the limitations of the Council on Higher Education's funding formula. The booklet also contains a profile of the University including such facts as enrollment, tuition and fees, degrees conferred, and staffing.

A number of strategic directions for the University served as the framework for the development of our plan and request, all of which support our overriding objective of making the University of Kentucky a truly great university—one that is recognized nationally for the quality of its scholarship, research and graduates. In developing our plan a number of needs were identified which we feel must be met if that objective is to be achieved. Our request is developed around the following priorities:

- First, to provide for fixed cost needs including Social Security and health insurance rate increases, utility rate increases, and the maintenance and operations of new buildings opening during the

forthcoming biennium, including community college buildings at Elizabethtown, Hazard, Lexington, Madisonville, Prestonsburg, and Owensboro; and the Agricultural Regulatory Services and Agricultural Engineering buildings on the central campus. Also included in our request is a 5% salary increase pool per year for faculty and staff, to be distributed on the basis of merit, and a 3% increase per year for purchased supplies, service and equipment.

- Second, much of our request focuses on "infrastructure" needs—the basic needs of the University. These needs include competitive salaries for our faculty and staff, adequate library materials, operating expenses, instructional equipment, computing needs, and routine building maintenance. Adequate funding of these needs has suffered a setback due to the budget reductions during the current biennium. Their funding is an essential step in continuing to move toward excellence, and one which I feel must be our foremost priority.
- Third, our request includes the enhancement of our existing Centers of Excellence—in Aging, Cancer, Equine Health Care, Pharma-

Copy 1

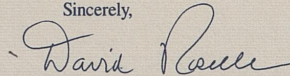
ceutical Science and Technology, Computational Sciences, Biotechnology, Biomedical Engineering, Robotics, and Public Administration—and the nurturing of additional centers. The development of these centers has been very positive and rewarding for the University and is an initiative on which we want to build.

- Fourth, there are a number of specific requests which would enhance our academic programs. The greater portion of these requests are in the Community College System and would, as examples, address numbers of faculty and staff needed due to enrollment growth, provide for non-traditional instructional delivery methods to meet access needs, and provide for developmental studies and adult literacy programs.
- Fifth, special funds (outside the formula) are being requested for the Desegregation Program, the Japanese Saturday School, the retirement program for our Federal agricultural employees, the unmet Federal portion of the salary increase needs of the Federal agricultural employees, a special initiative in International Trade Development and Competition, the Area Health Education Centers (AHECs), the McDowell Cancer Network, and a limited number of centers which we would select for further development and enhancement if additional funding were made available.
- Sixth, special funds are also being requested for debt service for the following capital needs—academic facilities at Ashland, Hopkinsville, Henderson, Prestonsburg, Somerset, Madisonville,

and Hazard as well as the Phase I completion at Owensboro; critically needed utility upgrades on the central campus; a Medical Research Building; an addition to the Business/Economics Building as well as the renovation of the existing building; a Pharmacy Incubation Facility; an Information Services Building; and a scheduled maintenance pool.

We feel the next several years will be exciting and progressive years for the University. We must look to the Commonwealth to provide the basic funding for adequate and enhanced support for the University. Your support is the vital and necessary ingredient required to allow us to move forward toward our common goal of having a great university in Kentucky. We do recognize a greater responsibility for providing for our needs ourselves from non-traditional sources of support and through a realistic assessment of opportunities for reallocation. We will continue to promote academic excellence and institutional integrity, and to strive for public confidence. I hope that you will look favorably upon our request. Let me commit my personal assistance and that of my staff to respond in greater detail about this request or any of the programs at the University.

Sincerely,

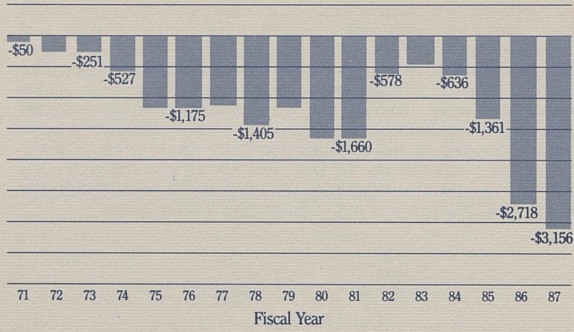


David P. Roselle  
President

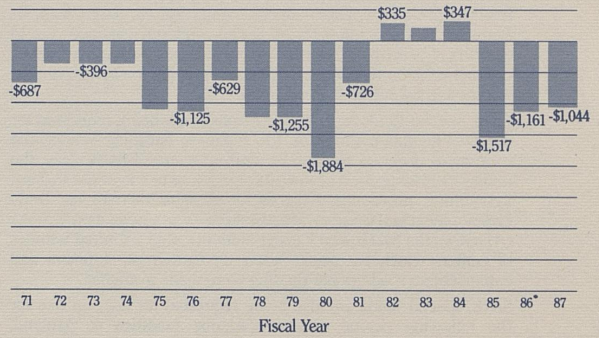
## Faculty Salaries

(amount below benchmark medians)

### Lexington Campus/Medical Center



### Community College System



## Biennial Request Priorities

### Lexington Campus/Medical Center

- |              |   |
|--------------|---|
| \$ 4,780,900 | 1. <b>Statutory and Contractual Obligations</b> —Staff benefits, utilities, debt service, and operating funds for three new buildings (Agricultural Engineering, Regulatory Services, and the Lancaster Aquatics Center).   |
| 17,154,900   | 2. <b>5% Salary Increase</b> (per year).  |
| 2,515,400    | 3. <b>Increased Costs of Supplies and Services.</b>   |
| 58,100       | 4. <b>Desegregation Plan</b> —To continue special funding. (Special Request)  |
| 6,890,400    | 5. <b>Faculty Salary Catch-up</b> —To bring faculty salaries up to competitive levels.  |
| 8,107,400    | 6. <b>Staff Salary Catch-up</b> —To bring staff salaries up to competitive levels.  |
| 2,200,000    | 7. <b>Restoration of 1987-88 Priorities</b> —To fund program priorities not included in the 1987-88 operating budget due to the reduction in our state appropriation: Centers of Excellence (Pharmacy, Biotechnology, and Biomedical Engineering), graduate assistant stipends, and supercomputer operations. |
| 2,423,700    | 8. <b>Current Expense Improvement</b> —To provide an adequate level of operating support for faculty and staff.   |
| 990,000      | 9. <b>Library Collection Development</b> —To increase the level of recurring funding for library collections.   |
| 580,100      | 10. <b>Instructional Equipment</b> —To provide for equipment purchase and allow for regular replacement.  |
| 1,574,000    | 11. <b>Computing Support</b> —To provide state-of-the-art computing capability for faculty, students, and staff.  |
| 1,256,500    | 12. <b>Building Maintenance</b> —To provide an adequate level of recurring support for maintenance of existing and new facilities.  |
| 57,700       | 13. <b>EPSCoR Support</b> —To enhance development of targeted EPSCoR projects and competitiveness for external research funding.  |

- \$ 540,900 14. **Business and Economics Program Improvement**—To reduce student: faculty ratios and add support to meet accreditation requirements and increasing student demand.
- 619,200 15. **Medical Center Support Positions**—To correct staffing deficiencies in animal care, research support, and administration.
- 350,000 16. **Membrane Sciences Center**—To add faculty positions to the multidisciplinary study of biological and synthetic membranes.
- 278,100 17. **Center for Biomedical Engineering**—To add faculty and other support to implement the biomedical image processing program and build strength in rehabilitation and sports medicine engineering.
- 503,500 18. **Graduate Program Enhancement**—To create a pool of new research assistantships and provide support for recruitment.
- 198,500 19. **Social and Behavioral Component of Center on Aging**—To add faculty and other support for research activities pertaining to aging within the social and behavioral sciences.
- 151,100 20. **Center for Computational Sciences**—To continue development of the Center of Excellence in Computational Sciences.
- 250,000 21. **Center for Equine Health Care**—To continue development of the equine research program.
- 51,800 22. **Fall Orientation**—To complement the summer advising conferences to improve students' initial experiences and adjustment.
- 23,100 23. **Retention/Scholarship/Assessment**—To adequately staff current student retention programs, to assess student outcomes, and to manage academic scholarships.
- 370,500 24. **Plant Genetic Engineering**—To continue to develop new and improved crops suited to Kentucky's soil and climate.
- 578,300 25. **Medical Center Faculty Positions**—To improve student:faculty ratios in Pharmacy and some programs in Allied Health; to expand graduate programs in Nursing, Physical Therapy, and General Practice Dentistry; and to add a geriatrics emphasis overall.
- 200,000 26. **Kentucky Agriculture Diversification**—To implement new crop and livestock production opportunities and serve Kentucky farmers.
- 38,700 27. **Teaching Assistant Orientation**—To provide effective guidance for all graduate students who perform instructional activities.

- S 713,700 28. **Program Improvements**—To implement program improvements in specified instructional, research, and service areas as follows: to decrease student:faculty ratios in Electrical Engineering; to add faculty in Math Education; to enhance support for WBKY; to meet clinical specialization needs in Surgery, Neurology, Rehabilitative Medicine, and Ophthalmology; to enhance the Merchandising, Apparel, and Textiles program; to establish a master's degree in Family Therapy; and to bring student teaching supervisor stipends up to a competitive level.
- 45,600 29. **Lancaster Aquatics Center Program Support**—To fund the recreational component of this new facility for the University community.
- 119,900 30. **Health Promotion Program**—To provide programs to improve employee health and productivity, and to contain health care costs.
- 261,600 31. **Japanese Saturday School**—Administered by the University, the intent of the Saturday School is to insure a reasonably successful re-entry into the Japanese education system by children of Japanese citizens temporarily assigned to work in Kentucky upon their return to Japan. State funding will replace funding which has, to date, been borne by the University. (Special Request)
- 1,357,200 32. **Funding of Benefit Program for Federal Agricultural Employees**—To meet additional costs of the benefit program for federal agricultural employees due to passage of the Federal Employees Retirement System (FERS) by Congress in 1986 which discontinued the Civil Service Retirement System for specified Agriculture Cooperative Extension employees. (Special Request)
- 983,800 33. **Federal Agriculture Salary Increases**—To address the unmet need for salary increases for federally-supported Cooperative Extension and Experiment Station employees of the University. (Special Request)
- 1,143,000 34. **International Trade Development and Competition**—To improve the international competitive position of Kentucky by coordinating current and planned initiatives relating to international trade, business, and development in the areas of business and economics, agriculture, international affairs and diplomacy, foreign languages and culture, and medical products and services. (Special Request)
- 1,401,300 35. **Area Health Education Centers**—To enhance regional health science libraries and to staff continuing education programs in the three Area Health Education Centers (AHECs) administered by the University (in Morehead, Hazard, and Corbin) which focus on health care distribution and access through onsite clinical training, and continuing education and library services for local health care professionals. (Special Request)

- \$ 155,700 36. **McDowell Cancer Network**—To increase personnel and other support to handle increased activity throughout the Network which promotes cancer education, research, and service programs to reduce the incidence, morbidity, and mortality of cancer in the Commonwealth. (Special Request)
- 1,255,400 37. **Centers of Excellence**—To enhance the Markey Cancer Center, the Center for Pharmaceutical Science and Technology, and the Center for Magnetic Resonance Imaging and Spectroscopy; and to support developing Centers in Materials Science, Nutrition (to include a doctoral program), and Immunology Transplantation. (Special Request)
- 6,848,400 38. **Debt Service**—To fund critically needed utility upgrades on the central campus; a Medical Research Building; an addition to and renovation of the Business and Economics Building; a Pharmacy Incubation Facility; an Information Services Building; and a scheduled maintenance pool. (Special Request)
- \$67,028,400 Total Request for Lexington Campus and Medical Center.

**Community College System**

- \$ 2,231,800 1. **Statutory and Contractual Obligations**—Staff benefits, utilities, debt service, and operating funds for new buildings at Elizabethtown, Lexington, Hazard, Prestonsburg, and Madisonville, and the new campus at Owensboro.
- 3,370,900 2. **5% Salary Increase** (per year).
- 619,500 3. **Increased Costs of Supplies and Services.**
- 8,000 4. **Desegregation Plan**—To continue special funding. (Special Request)
- 626,400 5. **Faculty Salary Catch-up**—To bring faculty salaries up to competitive levels.
- 1,774,800 6. **Staff Salary Catch-up**—To bring staff salaries up to competitive levels.
- 1,772,500 7. **Current Expense Improvement**—To provide an adequate level of operating support for faculty and staff.
- 856,200 8. **Faculty Position Catch-up**—To reduce the high student:faculty ratio resulting from a rapidly growing student body.
- 1,181,700 9. **Support Staff Position Catch-up**—To achieve adequate staffing and accommodate current enrollment.
- 1,134,300 10. **Student Access to Higher Education: Weekend/Evening and Off Campus Programs**—To expand and strengthen outreach programs.



\$ 2,545,400	11. <b>Advanced Technology Centers</b> —To provide specialized manufacturing training programs to meet the manpower needs of advanced technology industries.
340,000	12. <b>Occupational Programs</b> —To expand the occupational program offerings at Owensboro.
621,000	13. <b>Partnerships with Business/Industry/Communities</b> —To provide educational access to Kentucky residents including those in the adult working population who need training and/or retraining to enhance employment opportunities.
965,900	14. <b>Developmental Studies and Adult Literacy</b> —To improve learning laboratories and expand developmental studies programs for disadvantaged students to enhance their chances for success in college programs.
656,200	15. <b>Cooperative Education, Revised Placement, and Student Services</b> —To expand student opportunities to gain career-oriented experience and to provide career guidance and job placement functions on each campus.
912,000	16. <b>Library Automation and Enhancement</b> —To improve and expand library and computing support services throughout the System.
423,600	17. <b>Faculty, Staff, and Program Excellence</b> —To provide opportunities for professional development.
993,400	18. <b>Equipment</b> —To provide recurring funding for instructional and physical plant equipment purchase and replacement.
1,817,200	19. <b>Renovation and Repair</b> —To provide an adequate level of recurring support for preventive maintenance and minor repairs.
316,600	20. <b>Resource Development</b> —To develop funding from external sources through gifts and grants.
593,700	21. <b>General Education</b> —To expand the general studies curriculum by adding course offerings in the arts, languages, and humanities.
1,168,700	22. <b>Instructional Programs</b> —To expand programs to meet enrollment demands and provide options to meet local, regional, and statewide manpower needs in Nursing, Allied Health Programs, Microprocessing Equipment Technician, Business Technologies, Engineering Technologies, Commercial Art Technology, Computer-Assisted Design/Manufacturing, Chemical Technology, and Medical Records Technology.
2,988,500	23. <b>Debt Service</b> —To fund academic facilities at Ashland, Hopkinsville, Henderson, Prestonsburg, Somerset, Madisonville, and Hazard as well as the Phase I completion at Owensboro. (Special Request)
\$27,918,300	Total Request for Community College System.

## Financial Record Sources of Revenue

	Budgeted 1987-88	Requested 1988-89	Requested 1989-90
<b>Community College System</b>			
General Fund	\$ 41,964,300	\$ 63,489,700	\$ 69,882,600
*Restricted Agency Funds	20,618,700	22,559,100	23,350,400
Federal Funds	2,135,300	2,238,200	2,345,900
<b>Total</b>	<b>\$ 64,718,300</b>	<b>\$ 88,287,000</b>	<b>\$ 95,578,900</b>
State Request		\$ 21,525,400	\$ 6,392,900
<b>Lexington Campus/Medical Center</b>			
General Fund	\$184,638,000	\$236,232,400	\$251,666,400
*Restricted Agency Funds	250,199,700	260,270,900	268,265,400
Federal Funds	45,317,800	46,708,000	48,635,300
<b>Total</b>	<b>\$480,155,500</b>	<b>\$543,211,300</b>	<b>\$568,567,100</b>
State Request		\$ 51,594,400	\$ 15,434,000
<b>Total</b>			
General Fund	\$226,602,300	\$299,722,100	\$321,549,000
*Restricted Agency Funds	270,818,400	282,830,000	291,615,800
Federal Funds	47,453,100	48,946,200	50,981,200
<b>Total</b>	<b>\$544,873,800</b>	<b>\$631,498,300</b>	<b>\$664,146,000</b>
State Request		\$ 73,119,800	\$ 21,826,900

\*Includes tuition and fees, county appropriations, endowment income, investment income, gifts and grants, sales and services, Hospital, Auxiliary Services, restricted funds, and affiliated corporations.

## Financial Record Expenditures

Program	Budgeted 1987-88	Requested 1988-89	Requested 1989-90
Instruction	\$146,688,200	\$178,636,100	\$188,648,100
Research	63,874,400	73,179,800	76,918,000
Public Service	49,642,000	58,193,800	61,963,400
Libraries	9,516,000	12,193,500	12,739,500
Academic Support	24,886,400	30,185,600	31,485,000
Student Services	13,066,200	15,314,100	15,983,300
Institutional Report	21,243,400	24,042,100	25,088,500
Operations and Maintenance	32,227,100	39,581,100	42,250,400
Student Financial Aid	19,788,700	21,316,600	21,395,400
Mandatory Transfers (Debt Service)	22,331,700	29,212,900	32,559,400
Auxiliaries	34,330,100	36,510,000	37,961,200
Hospital	107,279,600	113,132,700	117,153,800
<b>Total</b>	<b>\$544,873,800</b>	<b>\$631,498,300</b>	<b>\$664,146,000</b>
<b>Category</b>			
Personnel Costs	308,697,100	368,229,700	390,490,500
Operating Expenses	183,771,900	198,406,700	204,375,900
Mandatory Transfers (Debt Service)	22,331,700	29,212,900	32,559,400
Capital Outlay	30,073,100	35,649,000	36,720,200
<b>Total</b>	<b>\$544,873,800</b>	<b>\$631,498,300</b>	<b>\$664,146,000</b>



## Capital Request 1988-90

Community College System	Lexington Campus/Medical Center
<b>Bonding Authority</b>	<b>Bonding Authority</b>
Ashland: Academic/Learning Resource Center	Utility Upgrades
\$ 4,300,000	\$ 15,974,000
Hopkinsville: Auditorium/Fine Arts Building	Medical Research Building
3,400,000	10,000,000
Henderson: Academic/Technical Building	Business/Economics Addition and Renovation
3,000,000	8,075,000
Prestonsburg: Science Building	Pharmacy Incubation Facility
3,100,000	4,000,000
Owensboro: Phase I Completion	Information Services Building
2,500,000	12,000,000
Somerset: Fine Arts/Community Center Building	Scheduled Maintenance Pool
3,200,000	4,200,000
(Total Scope: \$3,900,000)	Enclose Annex II with Connector
Madisonville: Academic/Learning Resource Center	1,300,000
2,900,000	
Hazard: Student Center Building	
1,800,000	
Debt Service Requirement	Debt Service Requirement
\$ 2,988,500	\$ 6,848,400

## Use of Increase in State Appropriation 1987-88

Community College System	Operating Budget
1. Special Appropriations	
Desegregation Funding	\$ 2,600
Owensboro Community College Program	330,300
Records (Southeast)	(30,000)
Debt Service <sup>1</sup>	1,946,900
2. Fixed Cost Increases	236,900
3. Salary and Wage Increases <sup>2</sup>	
Faculty (6.5% pool)	1,295,000
Staff (4% pool)	380,000
4. Enhancement, Development and Adequate Support of Academic Program	
Student Fee Scholarships	4,700
Faculty Position Catch-Up	844,300
Support Staff Position Catch-Up	602,900
<b>Total Increase<sup>3</sup></b>	<b>\$ 5,613,600</b>

<sup>1</sup>As adjusted after reduction. Includes debt service for academic buildings in Elizabethtown, Hazard, Lexington, Madisonville, and Prestonsburg and for the Owensboro Campus.

<sup>2</sup>Includes special catch-up funds included in salary incentive funds.

<sup>3</sup>Includes a reduction in the state appropriation of \$1,272,500 in addition to a reduction of \$1,262,500 in appropriated debt service.

### Use of Increase in State Appropriation 1987-88

Lexington Campus/Medical Center	Operating Budget
1. Special Appropriations	
Desegregation Funding	\$ 42,100
Center for Robotics and Manufacturing Systems	3,200,000
Center for Public Administration	12,600
Debt Service <sup>1</sup>	3,373,100
Centers of Excellence Award (Aging and Computational Sciences)	764,300
2. Fixed Costs	1,450,900
3. Salary and Wage Increases	
Faculty (4% pool)	2,540,000
Staff (4% pool)	3,216,000
4. Enhancement, Development and Adequate	
Support of Academic Program	
Student Fee Scholarships	162,600
Supercomputer Operations	500,000
Equipment Debt Service (University share) <sup>2</sup>	643,300
<b>Total Increase<sup>3</sup></b>	<b>\$ 15,904,900</b>

<sup>1</sup>As adjusted after reduction. Includes debt service for Agricultural Engineering Building, Regulatory Services Facility, Robotics and Manufacturing Systems Facility, and academic equipment.

<sup>2</sup>Partial commitment. Remainder from other sources.

<sup>3</sup>Includes a reduction in state appropriation of \$3,669,500 in addition to a reduction of \$1,478,100 in appropriated debt service.

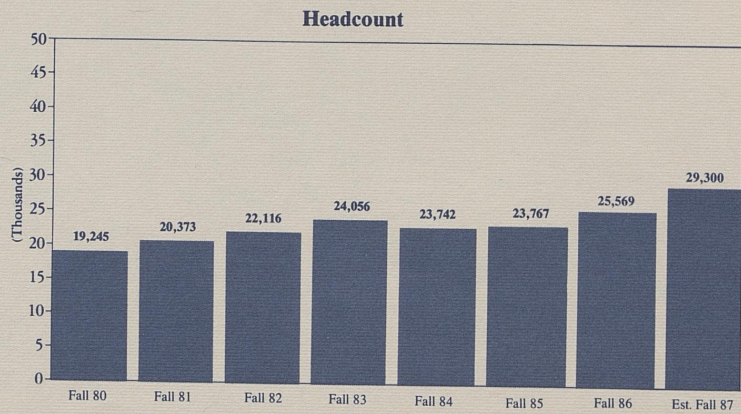




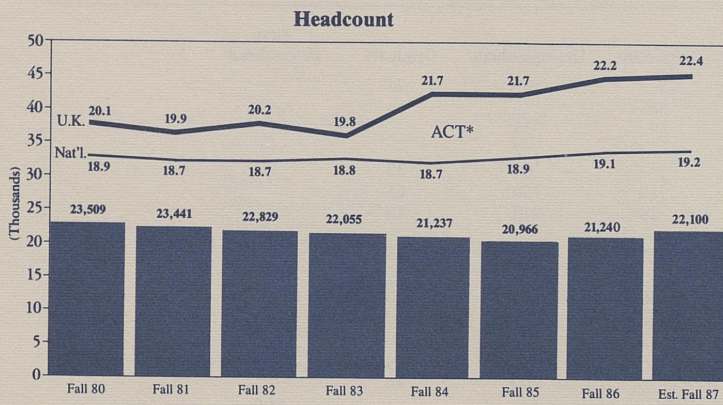


## Community College System Enrollment

Community Colleges	Fall 1986		Total
	Full Time	Part Time	
Ashland	977	1,014	1,991
Elizabethtown	1,028	1,063	2,091
Hazard	415	361	776
Henderson	473	572	1,045
Hopkinsville	573	495	1,068
Jefferson	2,400	4,596	6,996
Lexington	1,227	1,360	2,587
Madisonville	403	953	1,356
Maysville	390	337	727
Owensboro	383	712	1,095
Paducah	866	1,139	2,005
Prestonsburg	758	747	1,505
Somerset	680	622	1,302
Southeast	394	631	1,025
<b>Total</b>	<b>10,967</b>	<b>14,602</b>	<b>25,569</b>



## Main Campus Enrollment



\*American College Test composite score of entering freshmen.

### Fall 1986

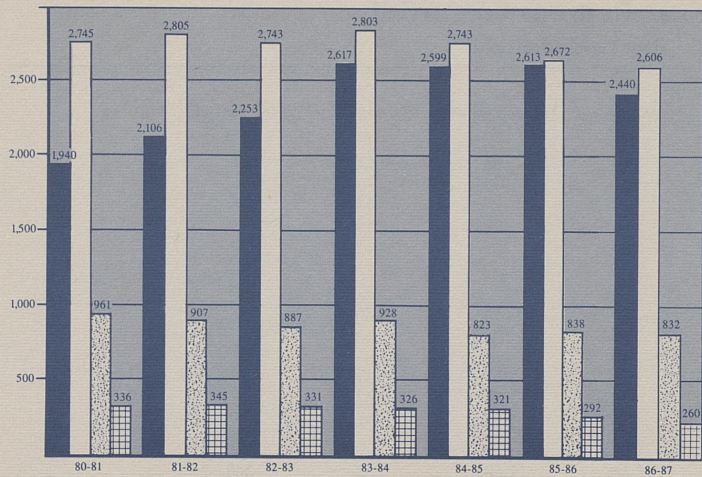
Lexington Campus and Medical Center	Full Time	Part Time	Total
Undergraduate	13,330	2,915	16,245
Graduate	1,647	1,897	3,544
Professional	986	13	999
House Staff/Postdoctoral	452	0	452
<b>Total</b>	<b>16,415</b>	<b>4,825</b>	<b>21,240</b>

**1986-87 Degrees Conferred  
(By Field of Study)**

<b>Field</b>	<b>Associate</b>	<b>Undergraduate</b>	<b>Graduate</b>	<b>First Professional</b>
Agriculture	-	127	74	-
Allied Health	588	-	-	-
Architecture	-	35	-	-
Area Studies	-	2	-	-
Biological/Life Sciences	-	63	35	-
Business/Management	569	709	65	-
Communications	26	210	16	-
Computer and Information Sciences	127	67	18	-
Dentistry	-	-	-	41
Education	16	208	126	-
Engineering	74	251	62	-
Fine and Applied Arts	-	33	20	-
Foreign Languages	-	17	14	-
Health Professions	-	290	80	-
Law	-	-	-	119

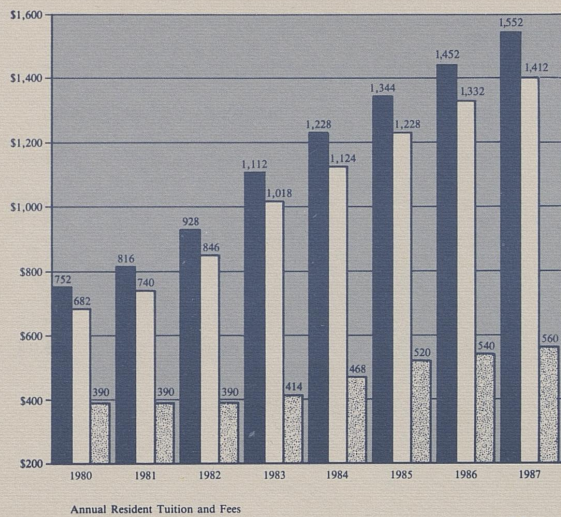
**1986-87 Degrees Conferred**  
(By Field of Study)

Field	Associate	Undergraduate	Graduate	First Professional
Home Economics	11	122	19	-
Letters	-	53	21	-
Liberal/General Studies	921	-	-	-
Library Science	-	-	47	-
Mathematics	-	29	15	-
Medicine	-	-	-	81
Parks and Recreation	-	-	-	-
Pharm D.	-	-	-	19
Physical Sciences	-	33	26	-
Precision Production	37	-	-	-
Protective Services	16	-	-	-
Psychology	-	67	17	-
Public Affairs	55	77	132	-
Social Sciences	-	131	45	-
Interdisciplinary	-	82	-	-
<b>Total</b>	<b>2,440</b>	<b>2,606</b>	<b>832</b>	<b>260</b>



### Degrees Conferred 1981-87

- Associate
- Baccalaureate
- Graduate
- Professional



### Tuition and Fees 1987-88

Full Time	Resident	Non Resident
Graduate	\$1,552	\$4,472
Undergraduate	1,412	4,052
Community College	560	1,680

## Staffing

Full-Time Employees	Lexington Campus/Medical Center				Community College System			
	1985	% Total	1986	% Total	1985	%Total	1986	%Total
Executive/Administrative/ Managerial	351	4.4%	352	4.6%	66	5.3%	66	5.2%
Faculty	1,507	18.7	1,509	19.6	682	54.7	701	55.1
Professional Non-Faculty	1,946	24.2	1,902	24.7	81	6.5	93	7.3
Secretarial/Clerical	1,804	22.4	1,674	21.8	276	22.2	277	21.8
Technical/Paraprofessional	772	9.6	679	8.8	16	1.3	15	1.2
Skilled Crafts	253	3.1	237	3.1	1	—	1	—
Service/Maintenance	1,419	17.6	1,336	17.4	124	10.0	120	9.4
<b>Total</b>	<b>8,052</b>	<b>100.0%</b>	<b>7,689</b>	<b>100.0%</b>	<b>1,246</b>	<b>100.0%</b>	<b>1,273</b>	<b>100.0%</b>



## Library Collections

---

1987	Main Campus	Community College System
Book Volumes	2,043,393	411,899
Government Documents	926,302	2,403
Current Periodical Titles	24,067	3,150
Microforms	3,546,191	105,001
Audio-Visual Materials	60,726	31,909
Other	514,173	20,536

In addition to the above, the library's collections include 185,827 maps; 2,230 Oral History Program interviews; 265 current state, national, and international newspapers; the Photographic Archives; the Modern Political Papers Program; the Government Documents Depository; the Appalachian Collection; and the W. Hugh Peal Collection.

Library sites include the Margaret I. King Library, 12 main campus branch libraries, and 15 community college libraries.

## Land and Space

---

	Community College System	Main Campus	Other *	Total
Acreage	1,158	746	20,825	22,729
<b>Assignable Square Footage in Buildings**</b>				
Classroom	182,994	219,760	2,200	404,954
Laboratory	292,787	764,804	25,198	1,082,789
Office	227,305	1,064,492	21,228	1,313,025
Study	147,887	289,696	0	437,583
Special	31,513	441,865	489,790	963,168
General	158,397	576,619	66,925	801,941
Support	35,236	1,131,190	165,708	1,332,134
Health Care	276	288,592	2,728	291,596
Residential	0	1,258,909	202,659	1,461,568
Unclassified	16,330	216,027	270	232,627
<b>Total</b>	<b>1,092,725</b>	<b>6,251,954</b>	<b>976,706</b>	<b>8,321,385</b>

\*Includes research farms, Robinson Forest, substations, 4-H camps, and Adena Park.

\*\*Based on Spring 1987 Physical Facilities Inventory.

## New Facilities

Project	Scope	Funding Source	Anticipated Online Date
<b>In Planning and Design</b>			
Agricultural Engineering Building	\$11,000,000	State	Spring 1989
Robotics and Manufacturing Systems Facility	10,000,000	State	Summer 1989
<b>Under Construction</b>			
Mining and Minerals Resources Building	\$14,000,000	State	Fall 1987
Lancaster Aquatics Center	5,700,000	Gifts	Spring 1988
Elizabethtown: Academic/Technical Building	3,600,000	State	Summer 1988
Hazard: Learning Resource Center	2,900,000	State	Summer 1988
Lexington: Academic/Technical Building	3,500,000	State	Summer 1988
Prestonsburg: Technical/Learning Resource Center	2,900,000	State	Summer 1988
Agricultural Regulatory Services	3,500,000	State	Fall 1988
Madisonville: Academic/Auditorium Building	2,900,000	State/Gift	Fall 1988
Owensboro: New Campus	12,500,000	State	Spring 1989
Hospital Addition and Expansion	50,000,000	Hospital	Spring 1990

## Administrative Organization

---

### **President**

Dr. David P. Roselle

### **Chancellor Community College System**

Dr. Charles T. Wethington, Jr.

### **Chancellor Lexington Campus**

Dr. Art Gallaher, Jr.

### **Chancellor Medical Center**

Dr. Peter P. Bosomworth

### **Administrative Executive Officers**

Edward A. Carter, Vice President for Administration

Raymond R. Hornback, Vice President for University Relations

Eugene R. Williams, Acting Vice President for Information Systems

David I. Carter, Associate Vice President for Facilities Planning and Management

John C. Darsie, Jr., General Counsel

Joan E. McCauley, Associate Vice President for Planning and Budget

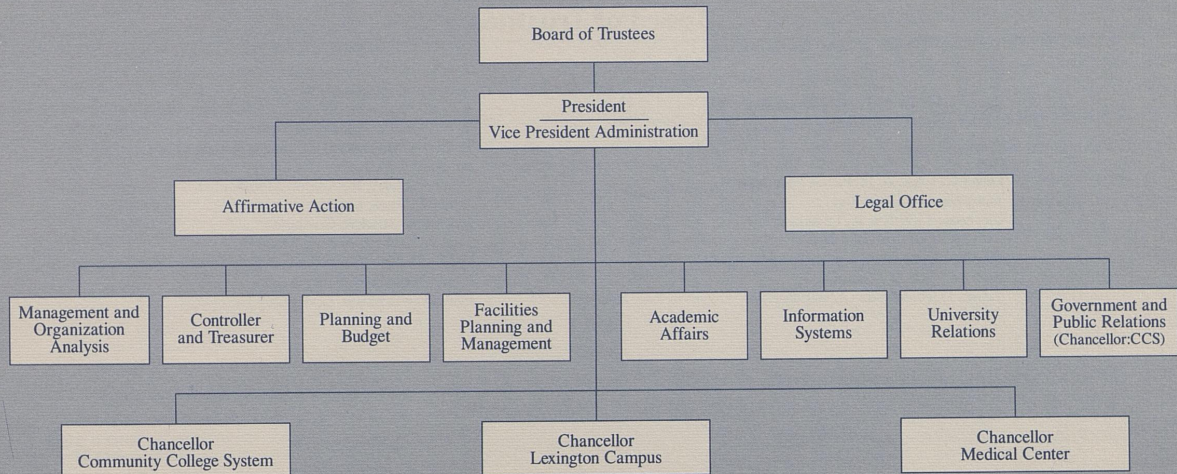
Henry Clay Owen, Controller and Treasurer

Nancy T. Ray, Assistant Vice President for Administration and  
Coordinator of Affirmative Action

Paul G. Sears, Special Assistant for Academic Affairs

Bernard L. Vonderheide, Director of Public Relations

### Administrative Organization



## University of Kentucky Board of Trustees

---

Ted. B. Bates, Alumni Member  
Raymond F. Betts, Faculty Member  
Albert Benjamin Chandler, Honorary Member  
Albert G. Clay, Mt. Sterling (Vice Chairman)  
Mary Sue Coleman, Faculty Member  
David R. Driscoll, Jr., Faculty Member  
Tracy Farmer, Lexington  
Lawrence E. Forgy, Jr., Lexington  
George W. Griffin, Jr., London  
Edythe Jones Hayes, Lexington (Secretary)  
Henry R. Hershey, Lexington  
Walter D. Huddleston, Elizabethtown

Brereton C. Jones, Midway  
R. Larry Jones, Louisville  
T. A. Lassetter, Lexington  
Robert T. McCowan, Ashland (Chairman)  
Nicholas J. Pisacano, Lexington  
Frank Ramsey, Jr., Alumni Member  
James L. Rose, London  
Jerome A. Stricker, Covington  
Julia K. Tackett, Alumni Member  
Bobby Watson, Owensboro  
Cyndi Weaver, Student Member  
Billy B. Wilcoxson, Lexington

## History

- 1865 Agricultural and Mechanical College (A & M) established as part of Kentucky University
- 1869 James K. Patterson became president of A&M
- 1878 A&M separated from Kentucky University
- 1882 A&M moved to current location in Lexington
- 1885 Agricultural Experiment Station opened
- 1889 College of Agriculture established
- 1908 College of Arts and Sciences established, College of Law established, A&M name changed to "State University, Lexington, Kentucky"
- 1909 A collection of books was moved into the Carnegie Building and named University Library
- 1911 Henry S. Barker became President of State University
- 1916 State University renamed University of Kentucky
- 1917 Frank McVey became President of University of Kentucky, Graduate School established
- 1918 College of Engineering established
- 1923 College of Education established
- 1925 College of Business and Economics established
- 1941 Herman L. Donovan became President
- 1947 College of Pharmacy moved to University of Kentucky
- 1956 Medical Center authorized by General Assembly, Frank G. Dickey became President
- 1957 Ashland Extension Center established
- 1959 Patterson School of Diplomacy established, Honors Program initiated
- 1960 Medical Center opened, College of Medicine admitted first class, College of Nursing admitted first class, Henderson Extension Center established, Southeast Extension Center established
- 1962 College of Dentistry admitted first class, University Hospital opened
- 1963 John W. Oswald became President
- 1964 Community College System established, Elizabethtown Community College established, Prestonsburg Community College established, College of Architecture established
- 1965 Hopkinsville Community College established, Somerset Community College established, Lexington Technical Institute (LTI) established
- 1966 College of Allied Health Professions established
- 1967 College of Home Economics established
- 1968 Albert D. Kirwan became President, Jefferson Community College established, Paducah Community College established, Hazard Community College established, Maysville Community College established, Madisonville Community College established
- 1969 College of Social Work established, Otis A. Singletary became President
- 1970 College of Library and Information Science established
- 1976 College of Communications established, College of Fine Arts established
- 1979 Martin Center of Public Administration established
- 1982 University reorganized with a Central Administration and three sectors headed by Chancellors (Lexington Campus, Medical Center, and Community College System)
- 1984 LTI became Lexington Community College
- 1986 Owensboro Community College established
- 1987 David P. Roselle became President

