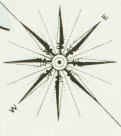


Ohio River

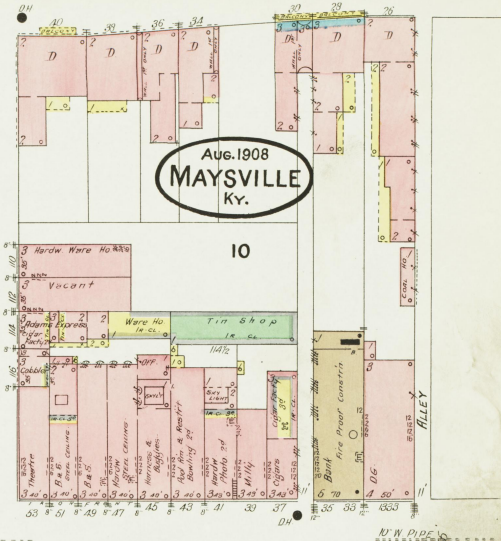
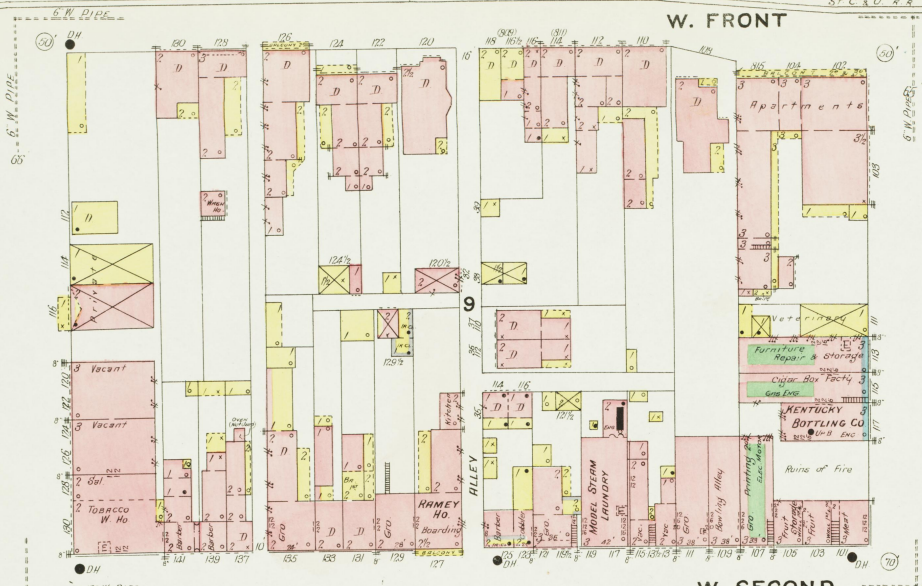


MAYSVILLE COTTON CO.
 1. 1ST FLOOR: ELECTRIC COOK. 2. 2ND FLOOR: 3. 3RD FLOOR: 4. 4TH FLOOR: 5. 5TH FLOOR: 6. 6TH FLOOR: 7. 7TH FLOOR: 8. 8TH FLOOR: 9. 9TH FLOOR: 10. 10TH FLOOR: 11. 11TH FLOOR: 12. 12TH FLOOR: 13. 13TH FLOOR: 14. 14TH FLOOR: 15. 15TH FLOOR: 16. 16TH FLOOR: 17. 17TH FLOOR: 18. 18TH FLOOR: 19. 19TH FLOOR: 20. 20TH FLOOR: 21. 21ST FLOOR: 22. 22ND FLOOR: 23. 23RD FLOOR: 24. 24TH FLOOR: 25. 25TH FLOOR: 26. 26TH FLOOR: 27. 27TH FLOOR: 28. 28TH FLOOR: 29. 29TH FLOOR: 30. 30TH FLOOR: 31. 31ST FLOOR: 32. 32ND FLOOR: 33. 33RD FLOOR: 34. 34TH FLOOR: 35. 35TH FLOOR: 36. 36TH FLOOR: 37. 37TH FLOOR: 38. 38TH FLOOR: 39. 39TH FLOOR: 40. 40TH FLOOR: 41. 41ST FLOOR: 42. 42ND FLOOR: 43. 43RD FLOOR: 44. 44TH FLOOR: 45. 45TH FLOOR: 46. 46TH FLOOR: 47. 47TH FLOOR: 48. 48TH FLOOR: 49. 49TH FLOOR: 50. 50TH FLOOR: 51. 51ST FLOOR: 52. 52ND FLOOR: 53. 53RD FLOOR: 54. 54TH FLOOR: 55. 55TH FLOOR: 56. 56TH FLOOR: 57. 57TH FLOOR: 58. 58TH FLOOR: 59. 59TH FLOOR: 60. 60TH FLOOR: 61. 61ST FLOOR: 62. 62ND FLOOR: 63. 63RD FLOOR: 64. 64TH FLOOR: 65. 65TH FLOOR: 66. 66TH FLOOR: 67. 67TH FLOOR: 68. 68TH FLOOR: 69. 69TH FLOOR: 70. 70TH FLOOR: 71. 71ST FLOOR: 72. 72ND FLOOR: 73. 73RD FLOOR: 74. 74TH FLOOR: 75. 75TH FLOOR: 76. 76TH FLOOR: 77. 77TH FLOOR: 78. 78TH FLOOR: 79. 79TH FLOOR: 80. 80TH FLOOR: 81. 81ST FLOOR: 82. 82ND FLOOR: 83. 83RD FLOOR: 84. 84TH FLOOR: 85. 85TH FLOOR: 86. 86TH FLOOR: 87. 87TH FLOOR: 88. 88TH FLOOR: 89. 89TH FLOOR: 90. 90TH FLOOR: 91. 91ST FLOOR: 92. 92ND FLOOR: 93. 93RD FLOOR: 94. 94TH FLOOR: 95. 95TH FLOOR: 96. 96TH FLOOR: 97. 97TH FLOOR: 98. 98TH FLOOR: 99. 99TH FLOOR: 100.

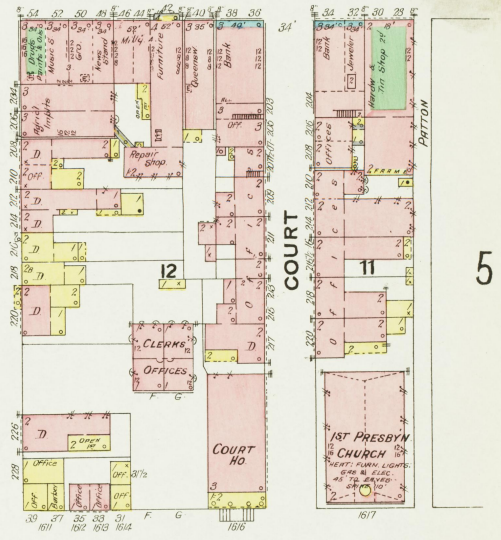
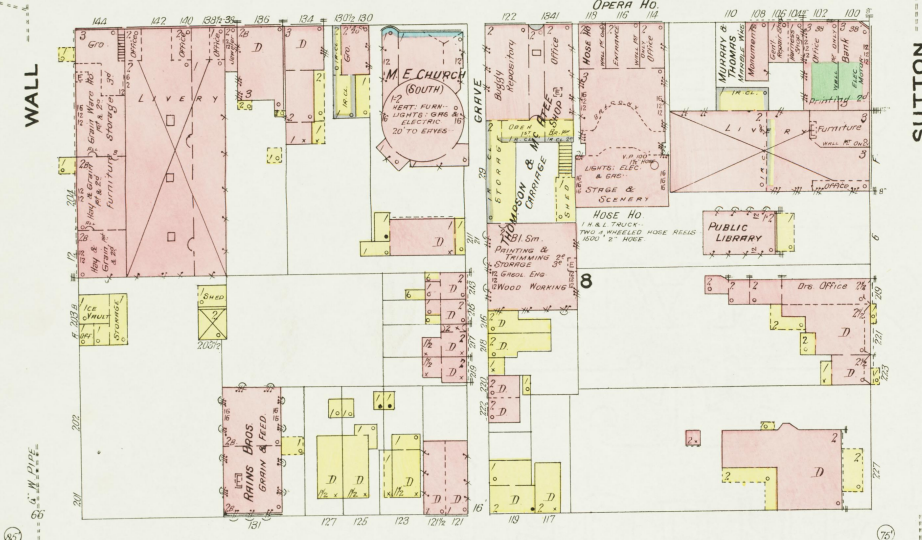


Aug. 1908
MAYSVILLE
Ky.

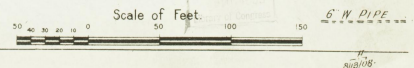
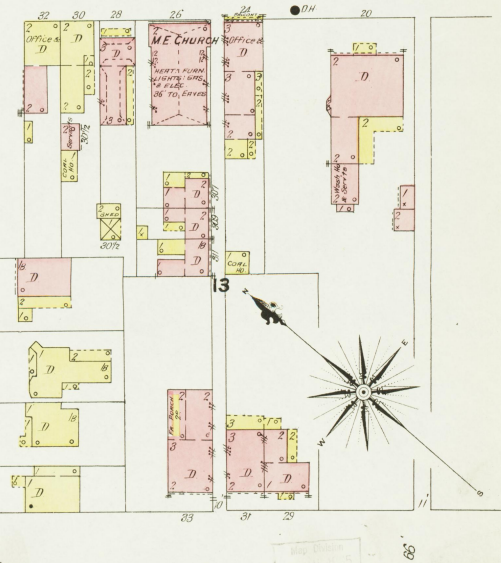
W. FRONT



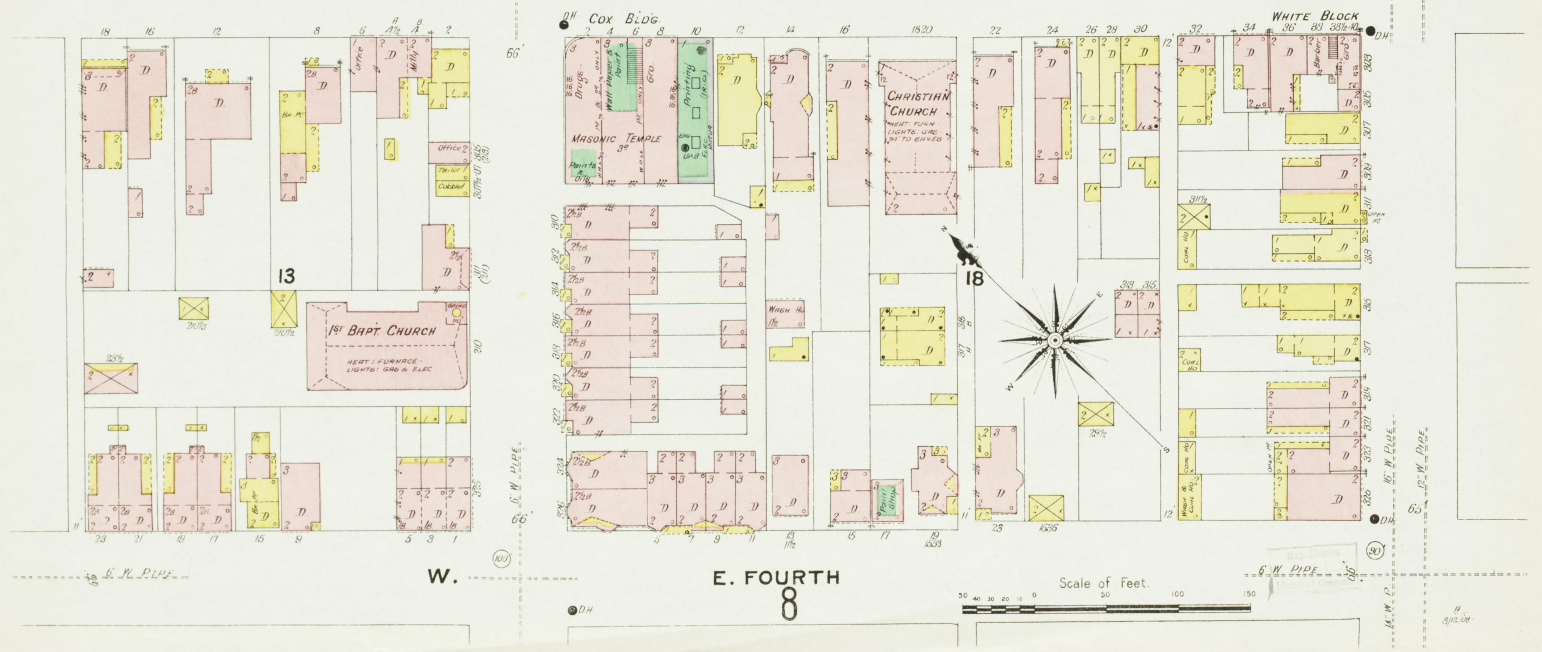
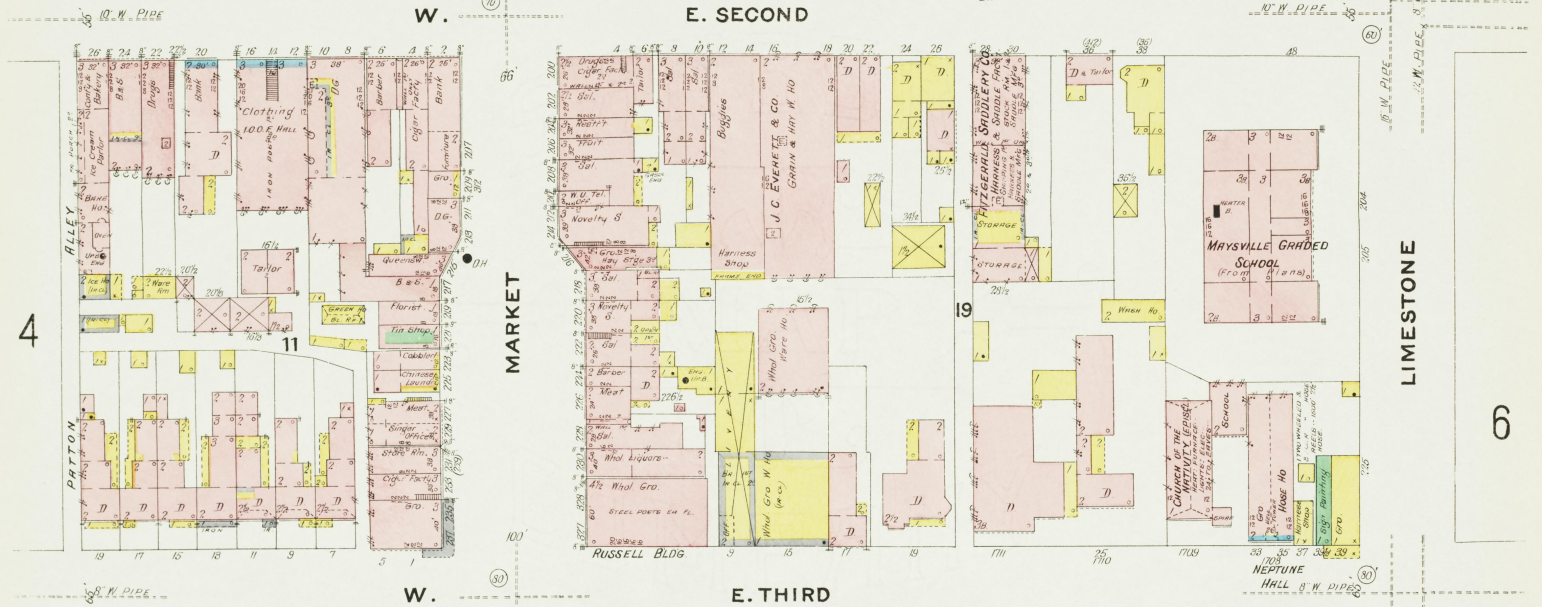
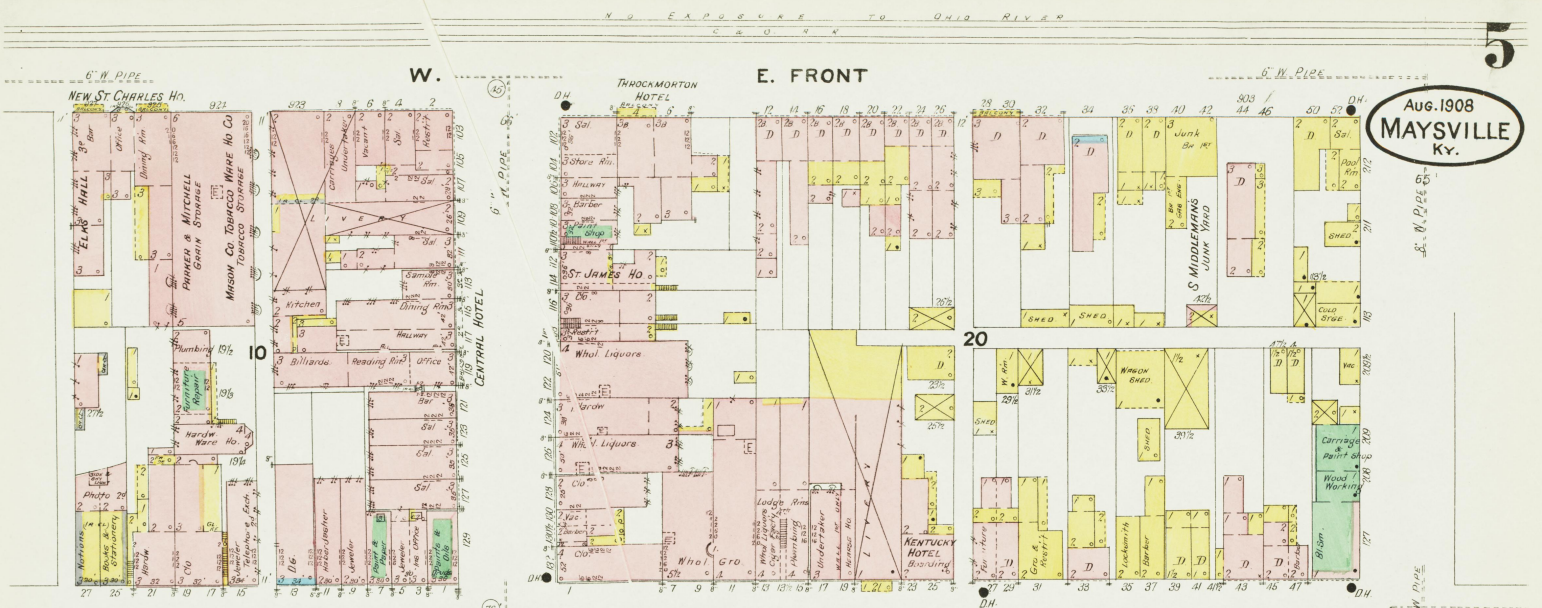
W. SECOND



W. THIRD



Aug. 1908
MAYSVILLE
Ky.



NO EXPOSURE TO OHIO RIVER



E. SECOND

E. THIRD

E. FOURTH

Scale of Feet.

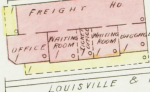
- MAGNOLIA FLOUR MILLS**
 CAPACITY 100 BLS. NO. WATCHMAN. HEATS POWER. STEAM.
 LIGHTS. ELEC. (100 PLANT) FULL. CON. 2 BLS. OF WHEAT
 750 HANG. GRAINDOLLS
- MACHINERY**
 500' WHEAT BLENDER
 1000' CON. MILLER
 1 WHEAT SEPARATOR
 1 WHEAT COLLECTOR
 1000' FLOUR PACKERS
 5000' CON. HANG. ROLLERS
 1000' FEED ROLL.
 2 SCOURERS
- TOURNAI. ROLLER PROCESS**
 1 WHEAT STEAMER
 1 WHEAT SORTER. TAIL COLLECTOR
 1 WHEAT SEPARATOR
 1 WHEAT SEPARATOR
 1 WHEAT SEPARATOR. 2 BARBERS
 1 WHEAT TAILER. MILL. ROLL
 2 WHEAT. 250 HANG. ELEVATORS

5 Limestone

7

8

BRIDGE

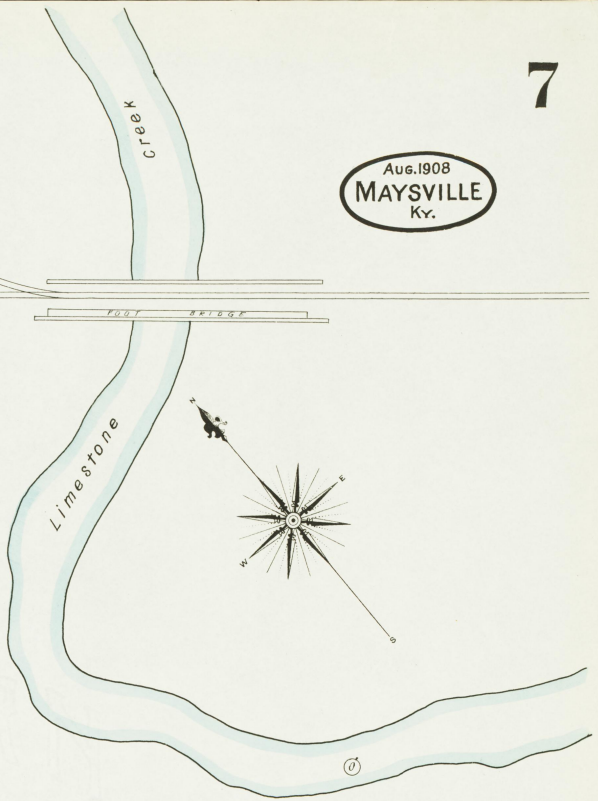


LOUISVILLE & NASHVILLE R.R.



E. THIRD

**E. T. HUNTER
"OLD GOLD MILL"**
NO WATCHMAN NERT STORE IN OFFICE.
POWER, STEAM, FUEL, COAL LIGHTS, REND,
OIL, CLOSED LAMPS & LANTERNS,
HAND OIL, METAL BEARINGS, CITY WATER,
17 P.P. 65 TO 25 FEET; 50' T' HOUSE HEAT
ON 1ST & 2D; 100' ON 3D.
CAPACITY 800 BLS PER 24 HOURS.
1ST FLY CORN BUYS; 6 SHAW WOLLS (SHELLS)
1 RICHMOND BRIN DUSTER, 450 REV. PER MINUTE.
2ND FLY 1 SEPARATOR & SCOURER (EUNF-10) 100 REV.
1 BAG LAB, SEPARATOR (EUNF-20) 700 REV.
3 SMITH'S MIDDLING FURNACES:
1 WILCOX'S BRAN DUSTER 400 REV. PRINZ'S DUST
COLLECTOR 100 REV. PER MINUTE.
3 HUNTLEY'S & HANCOCK'S SCOURERS.
NOT IN OPERATION FOR PAST 5 OR 6 YEARS.

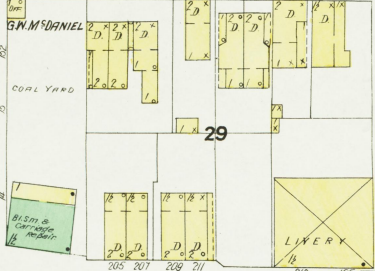


6

PLUM

JANUARY

31

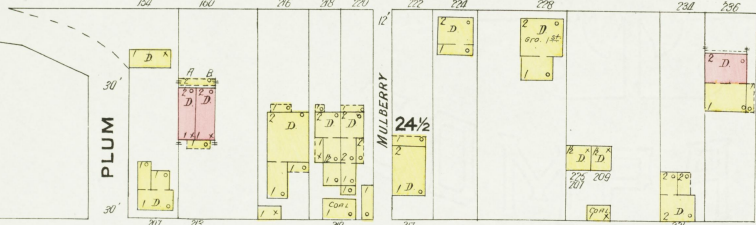


E. FOURTH (FLEMING PIKE)

PLUM

24 1/2

32



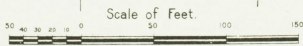
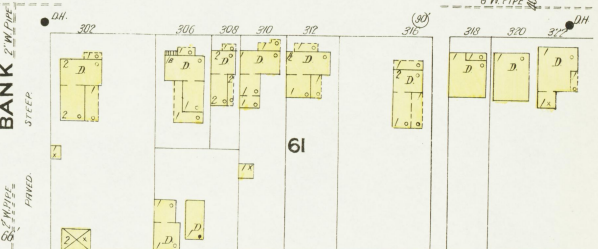
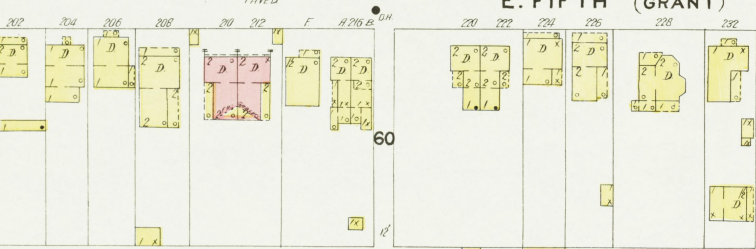
E. FIFTH (GRANT)

PLUM

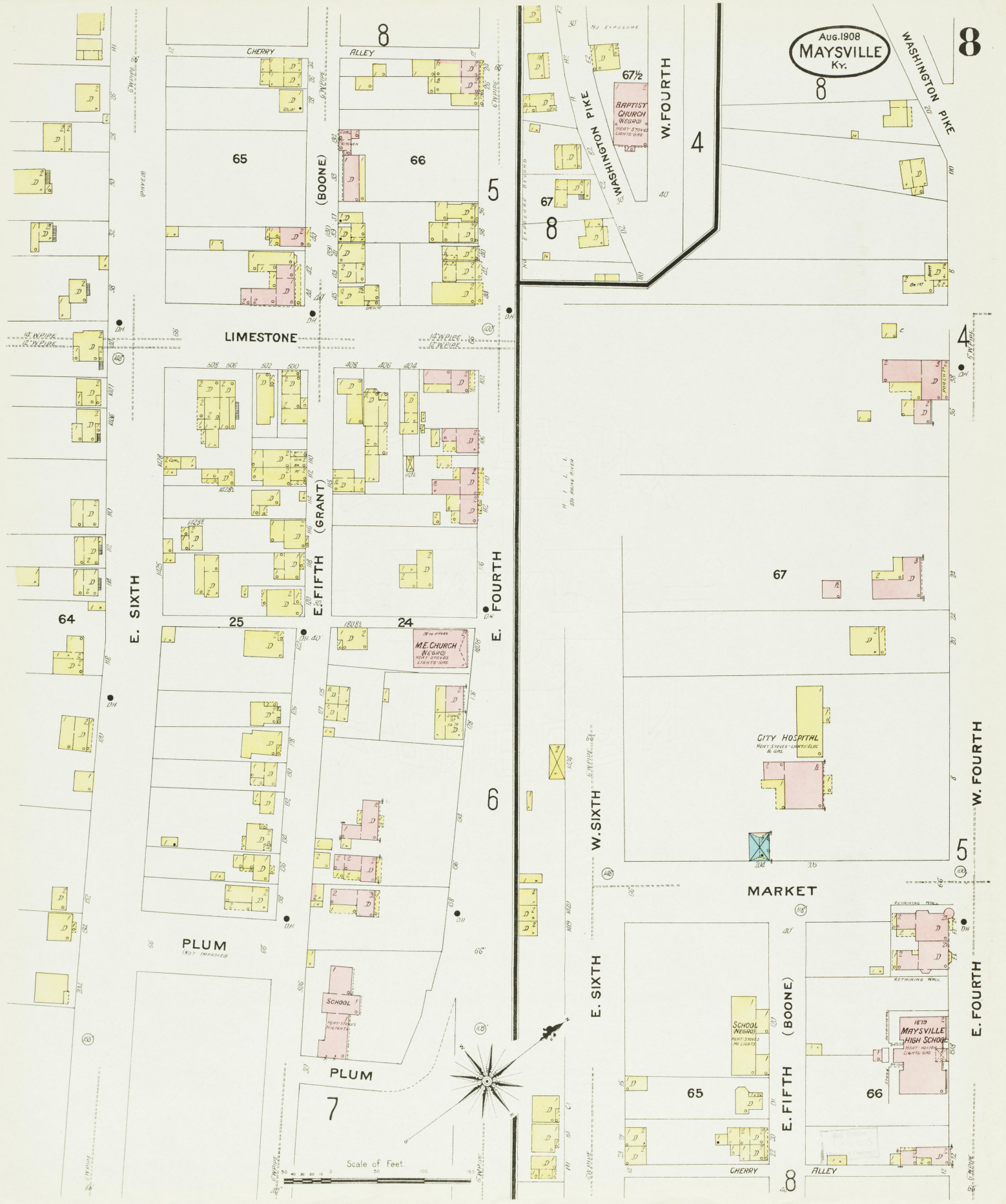
E. SIXTH

62

61



Aug. 1908
MAYSVILLE
Ky.



E. SIXTH

(BOONE)

(GRANT)

E. FOURTH

W. SIXTH

E. SIXTH

W. FOURTH

W. FOURTH

E. FOURTH

MARKET

(BOONE)

E. FIFTH

1879
MAYSVILLE
HIGH SCHOOL

SCHOOL
(WESLEY)

CITY HOSPITAL

M.E. CHURCH

CHERRY

WASHINGTON PIKE

WASHINGTON PIKE

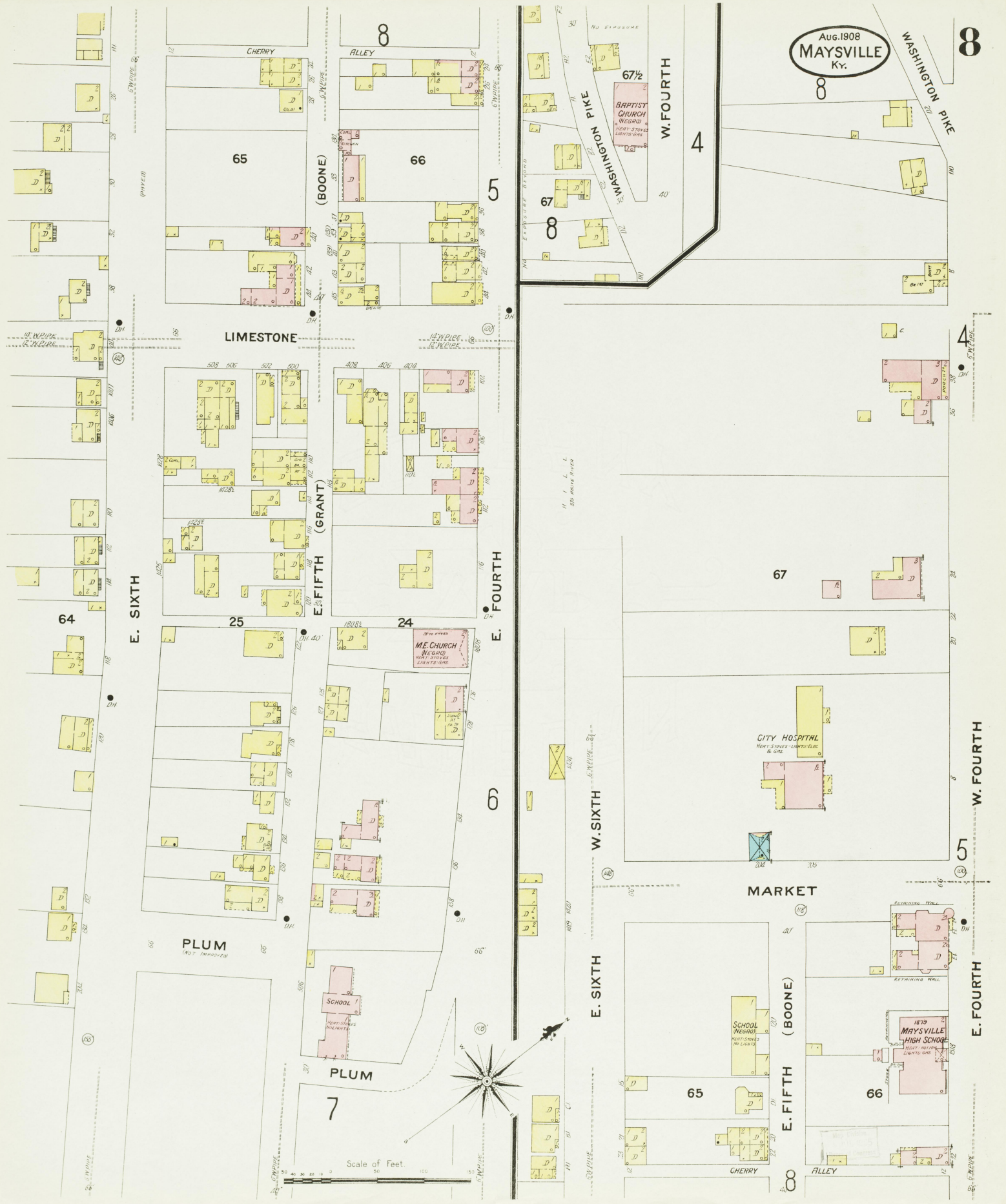
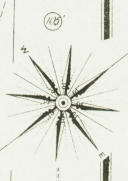
PLUM

PLUM

CHERRY

ALLEY

Scale of Feet

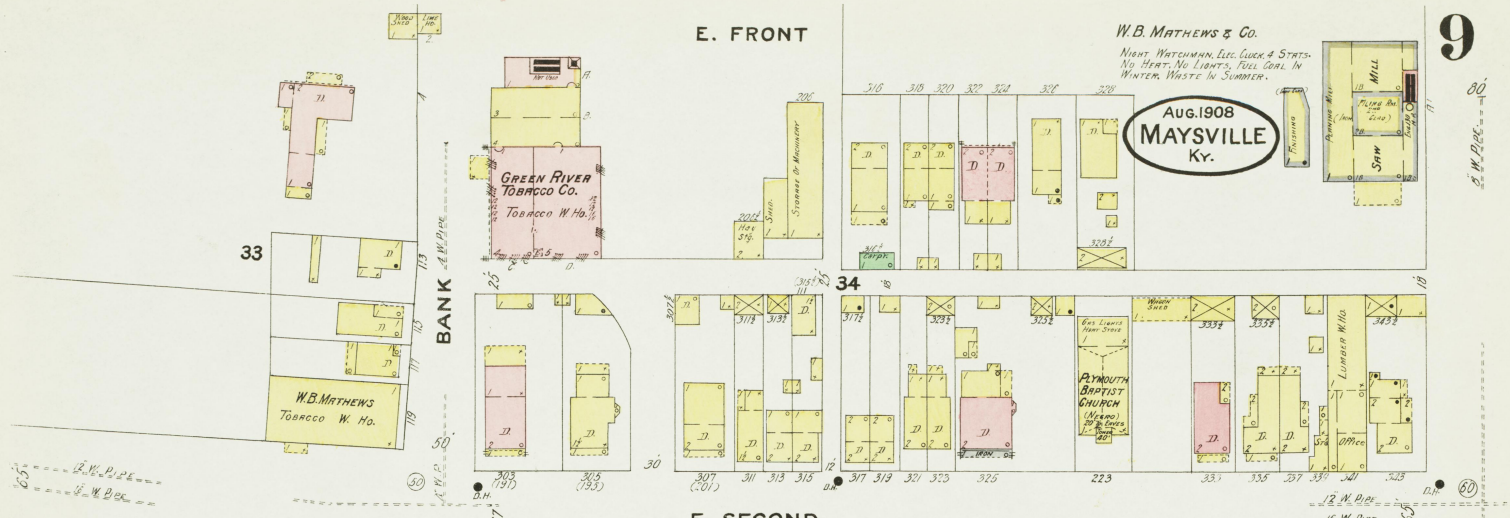


E. FRONT

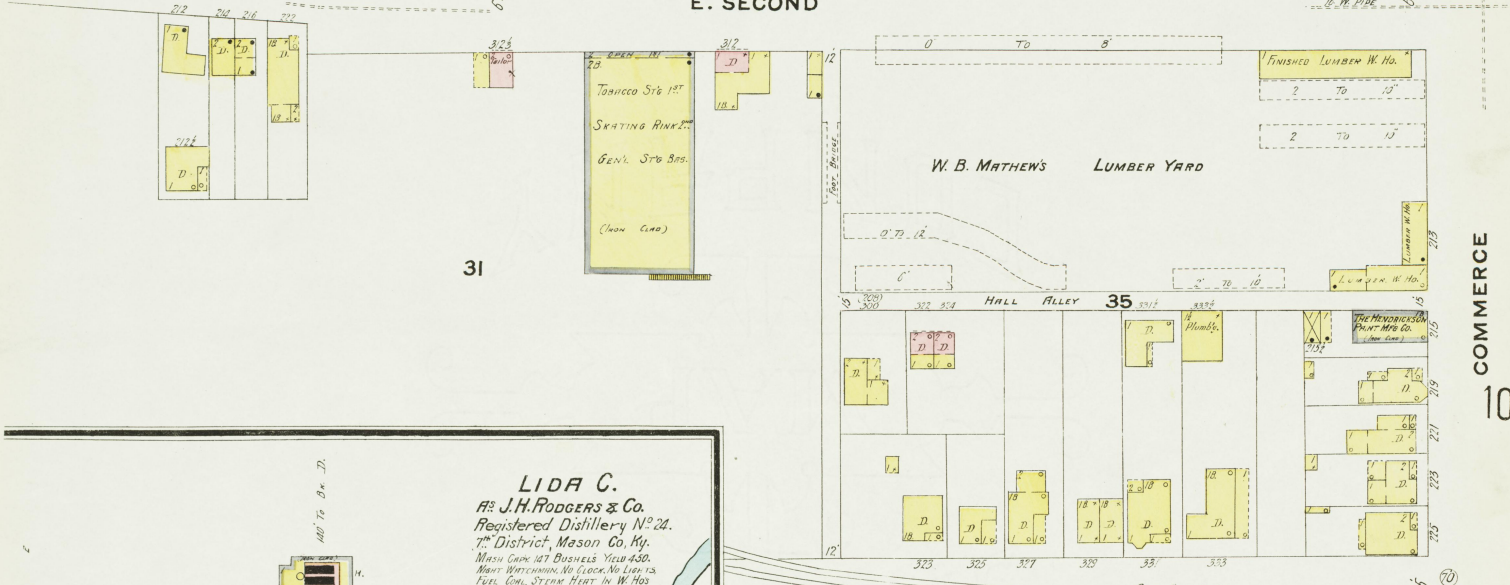
W.B. MATHEWS & Co.

Aug. 1908
MAYSVILLE
Ky.

NIGHT WATCHMAN, ELEC. CLOCK & STAIRS.
NO HEAT, NO LIGHTS, FULL COAL IN
WINTER, WASTE IN SUMMER.

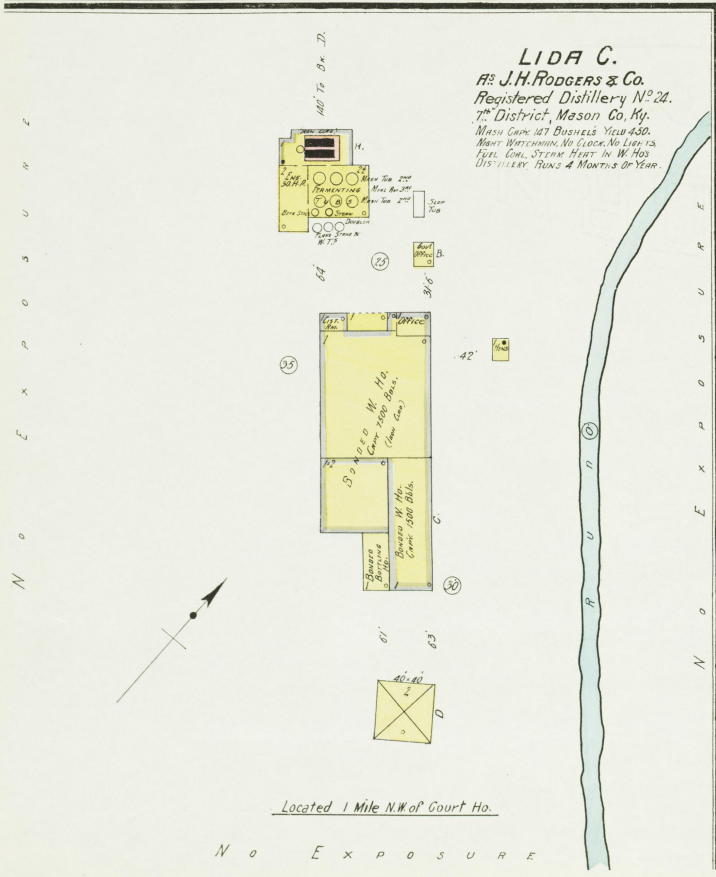


E. SECOND



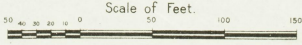
LIDA C.

As J.H. ROGERS & Co.
Registered Distillery No. 24.
7th District, Mason Co. Ky.
WASH. CAP. 147 BUSHELS YIELD 450.
NIGHT WATCHMAN, NO CLOCK, NO LIFT-12.
FULL COAL, STEAM HEAT IN W. HO.
DISTILLERY RUNS 4 MONTHS OF YEAR.



Located 1 Mile N.W. of Court Ho.

N O E X P O S U R E



Aug. 1908
MAYSVILLE
Ky.

10

NO EXPOSURE TO OHIO RIVER

E. FRONT

69

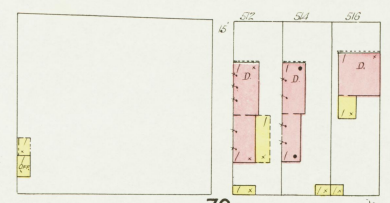
E. SECOND

72

E. THIRD

73

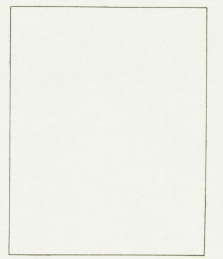
FOREST AV.
16



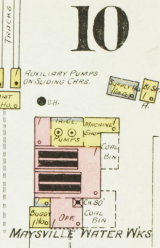
70



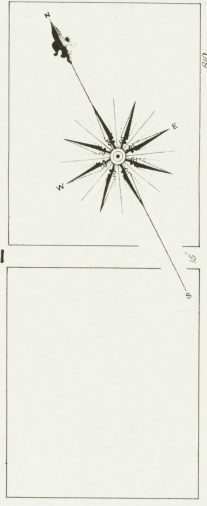
71



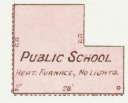
74



MAYSVILLE WATER WKS



11



PUBLIC SCHOOL
HEAT, FURNACE, NO LIGHTS

Scale of Feet



COMMERCE

POPLAR

LEXINGTON

STW. PIPE

STW. PIPE (W. SIDE MAIN)

STW. PIPE

C. & O. R.R.

STW. PIPE

STW. PIPE

STW. PIPE

REGULATORY PUMPS ON BUILDING CORNER

STW. PIPE

STW. PIPE

STW. PIPE

STW. PIPE

STW. PIPE

STW. PIPE

STW. PIPE

STW. PIPE

STW. PIPE

STW. PIPE

STW. PIPE

STW. PIPE

STW. PIPE

STW. PIPE

STW. PIPE

STW. PIPE

STW. PIPE

STW. PIPE

STW. PIPE

STW. PIPE

STW. PIPE

STW. PIPE

STW. PIPE

STW. PIPE

STW. PIPE

STW. PIPE

STW. PIPE

STW. PIPE

STW. PIPE

STW. PIPE

STW. PIPE

STW. PIPE

STW. PIPE

STW. PIPE

STW. PIPE

STW. PIPE

STW. PIPE

STW. PIPE

STW. PIPE

STW. PIPE

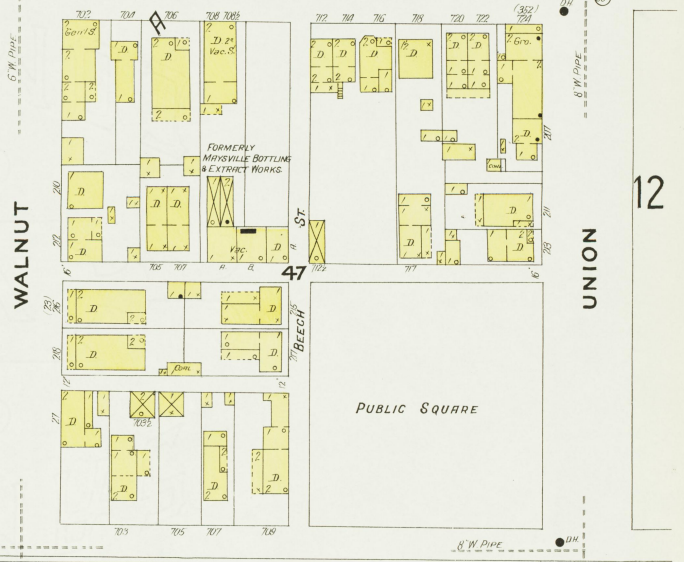
STW. PIPE

STW. PIPE

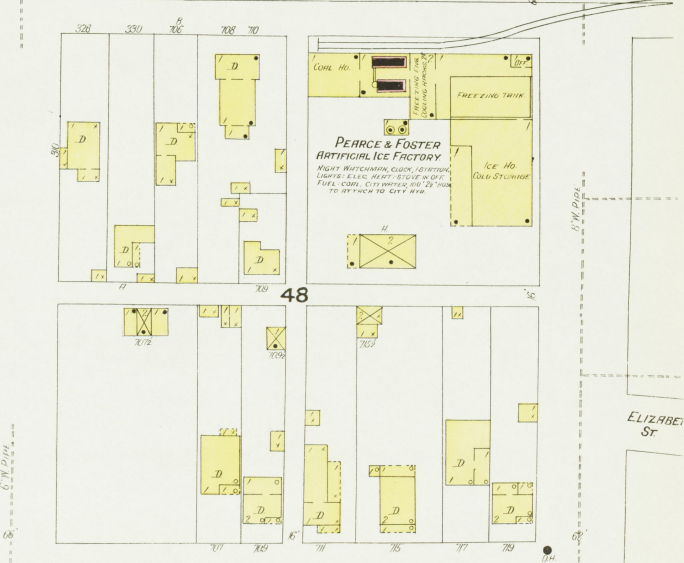
E. FRONT



E. SECOND



E. THIRD



Scale of Feet

FOREST AV.

YACHT FIELDS BEYOND.

LEXINGTON

WALNUT

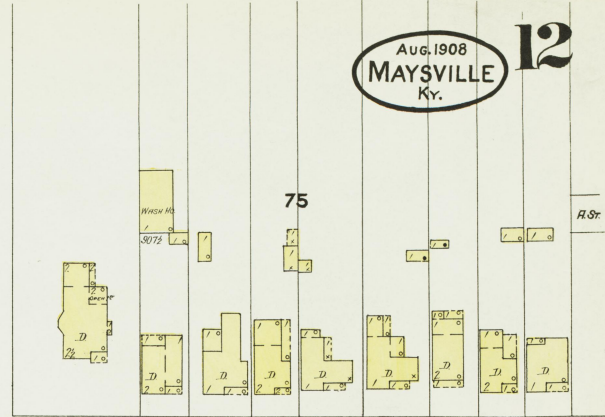
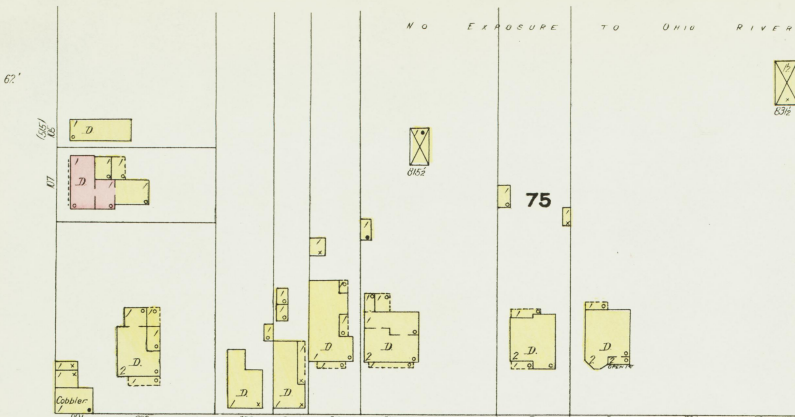
UNION

12

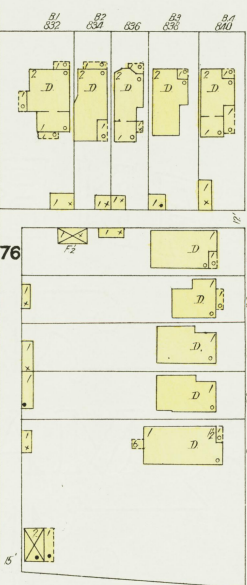
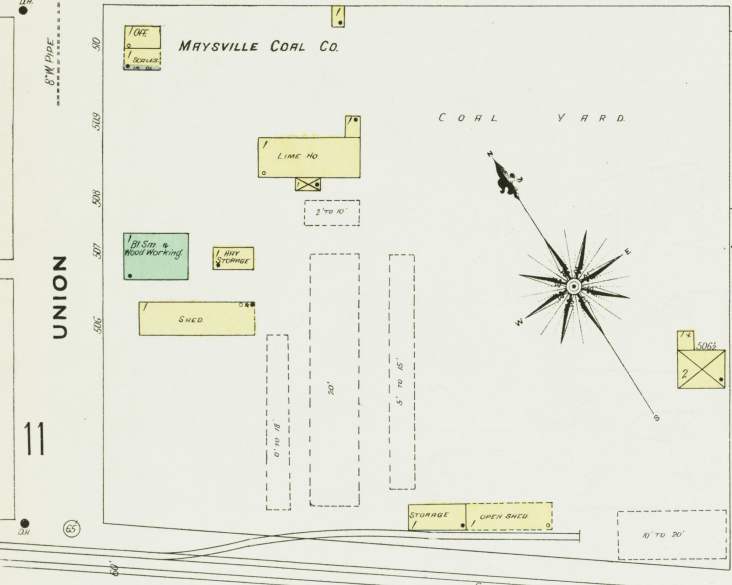
ELIZABETH ST.

NO EXPOSURE TO OHIO RIVER

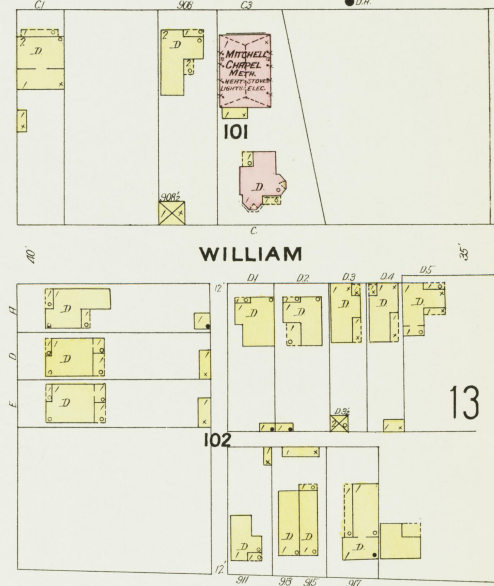
WASHINGTON



E. SECOND

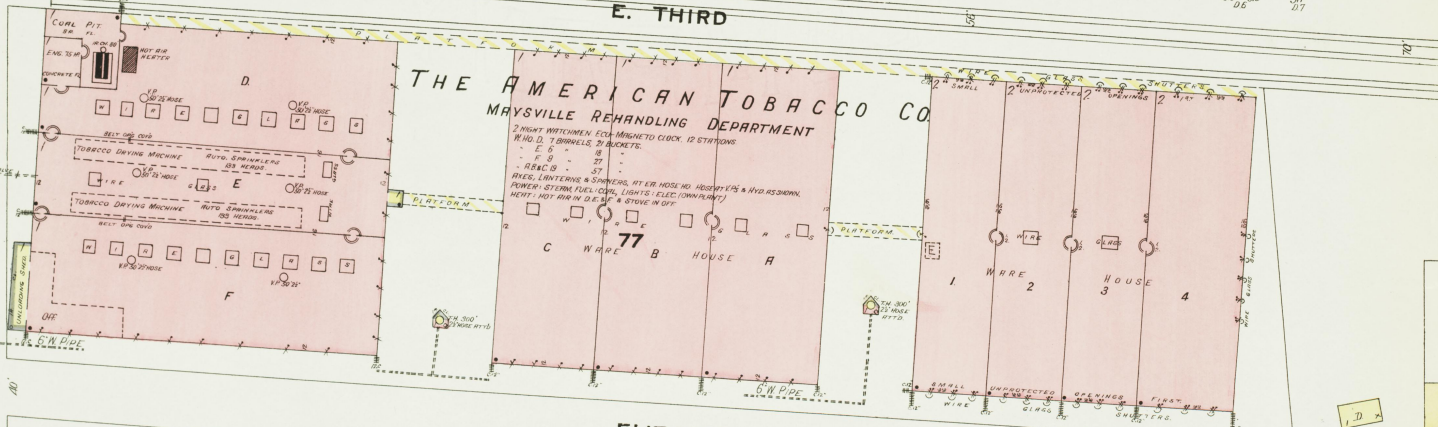


HOUSTON (NEW)



WILLIAM

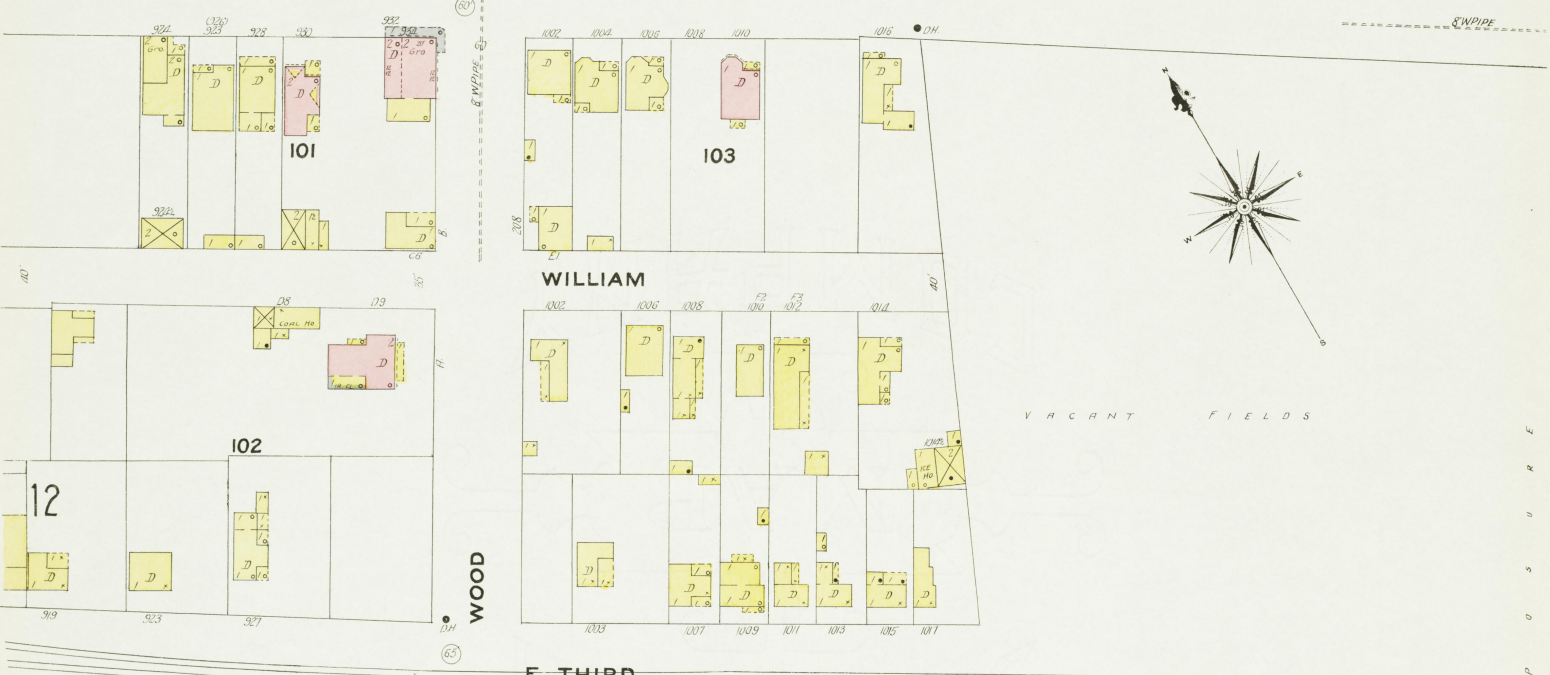
E. THIRD



ELIZABETH

201

FOREST AV.



NO EXPOSURE TO OHIO RIVER.

14

AUG. 1908
MAYSVILLE
KY.

OHIO RIVER LUMBER CO.
PRODUCT FINISHED LUMBER
No. WITCHAM, No. Fire, Hummerus,
Saw, No. 2, 3, 4, 5, 6, 7, 8, 9, 10, 11, 12, 13, 14, 15, 16, 17, 18, 19, 20, 21, 22, 23, 24, 25, 26, 27, 28, 29, 30, 31, 32, 33, 34, 35, 36, 37, 38, 39, 40, 41, 42, 43, 44, 45, 46, 47, 48, 49, 50, 51, 52, 53, 54, 55, 56, 57, 58, 59, 60, 61, 62, 63, 64, 65, 66, 67, 68, 69, 70, 71, 72, 73, 74, 75, 76, 77, 78, 79, 80, 81, 82, 83, 84, 85, 86, 87, 88, 89, 90, 91, 92, 93, 94, 95, 96, 97, 98, 99, 100, 101, 102, 103, 104, 105, 106, 107, 108, 109, 110, 111, 112, 113, 114, 115, 116, 117, 118, 119, 120, 121, 122, 123, 124, 125, 126, 127, 128, 129, 130, 131, 132, 133, 134, 135, 136, 137, 138, 139, 140, 141, 142, 143, 144, 145, 146, 147, 148, 149, 150, 151, 152, 153, 154, 155, 156, 157, 158, 159, 160, 161, 162, 163, 164, 165, 166, 167, 168, 169, 170, 171, 172, 173, 174, 175, 176, 177, 178, 179, 180, 181, 182, 183, 184, 185, 186, 187, 188, 189, 190, 191, 192, 193, 194, 195, 196, 197, 198, 199, 200, 201, 202, 203, 204, 205, 206, 207, 208, 209, 210, 211, 212, 213, 214, 215, 216, 217, 218, 219, 220, 221, 222, 223, 224, 225, 226, 227, 228, 229, 230, 231, 232, 233, 234, 235, 236, 237, 238, 239, 240, 241, 242, 243, 244, 245, 246, 247, 248, 249, 250, 251, 252, 253, 254, 255, 256, 257, 258, 259, 260, 261, 262, 263, 264, 265, 266, 267, 268, 269, 270, 271, 272, 273, 274, 275, 276, 277, 278, 279, 280, 281, 282, 283, 284, 285, 286, 287, 288, 289, 290, 291, 292, 293, 294, 295, 296, 297, 298, 299, 300, 301, 302, 303, 304, 305, 306, 307, 308, 309, 310, 311, 312, 313, 314, 315, 316, 317, 318, 319, 320, 321, 322, 323, 324, 325, 326, 327, 328, 329, 330, 331, 332, 333, 334, 335, 336, 337, 338, 339, 340, 341, 342, 343, 344, 345, 346, 347, 348, 349, 350, 351, 352, 353, 354, 355, 356, 357, 358, 359, 360, 361, 362, 363, 364, 365, 366, 367, 368, 369, 370, 371, 372, 373, 374, 375, 376, 377, 378, 379, 380, 381, 382, 383, 384, 385, 386, 387, 388, 389, 390, 391, 392, 393, 394, 395, 396, 397, 398, 399, 400, 401, 402, 403, 404, 405, 406, 407, 408, 409, 410, 411, 412, 413, 414, 415, 416, 417, 418, 419, 420, 421, 422, 423, 424, 425, 426, 427, 428, 429, 430, 431, 432, 433, 434, 435, 436, 437, 438, 439, 440, 441, 442, 443, 444, 445, 446, 447, 448, 449, 450, 451, 452, 453, 454, 455, 456, 457, 458, 459, 460, 461, 462, 463, 464, 465, 466, 467, 468, 469, 470, 471, 472, 473, 474, 475, 476, 477, 478, 479, 480, 481, 482, 483, 484, 485, 486, 487, 488, 489, 490, 491, 492, 493, 494, 495, 496, 497, 498, 499, 500, 501, 502, 503, 504, 505, 506, 507, 508, 509, 510, 511, 512, 513, 514, 515, 516, 517, 518, 519, 520, 521, 522, 523, 524, 525, 526, 527, 528, 529, 530, 531, 532, 533, 534, 535, 536, 537, 538, 539, 540, 541, 542, 543, 544, 545, 546, 547, 548, 549, 550, 551, 552, 553, 554, 555, 556, 557, 558, 559, 560, 561, 562, 563, 564, 565, 566, 567, 568, 569, 570, 571, 572, 573, 574, 575, 576, 577, 578, 579, 580, 581, 582, 583, 584, 585, 586, 587, 588, 589, 590, 591, 592, 593, 594, 595, 596, 597, 598, 599, 600, 601, 602, 603, 604, 605, 606, 607, 608, 609, 610, 611, 612, 613, 614, 615, 616, 617, 618, 619, 620, 621, 622, 623, 624, 625, 626, 627, 628, 629, 630, 631, 632, 633, 634, 635, 636, 637, 638, 639, 640, 641, 642, 643, 644, 645, 646, 647, 648, 649, 650, 651, 652, 653, 654, 655, 656, 657, 658, 659, 660, 661, 662, 663, 664, 665, 666, 667, 668, 669, 670, 671, 672, 673, 674, 675, 676, 677, 678, 679, 680, 681, 682, 683, 684, 685, 686, 687, 688, 689, 690, 691, 692, 693, 694, 695, 696, 697, 698, 699, 700, 701, 702, 703, 704, 705, 706, 707, 708, 709, 710, 711, 712, 713, 714, 715, 716, 717, 718, 719, 720, 721, 722, 723, 724, 725, 726, 727, 728, 729, 730, 731, 732, 733, 734, 735, 736, 737, 738, 739, 740, 741, 742, 743, 744, 745, 746, 747, 748, 749, 750, 751, 752, 753, 754, 755, 756, 757, 758, 759, 760, 761, 762, 763, 764, 765, 766, 767, 768, 769, 770, 771, 772, 773, 774, 775, 776, 777, 778, 779, 780, 781, 782, 783, 784, 785, 786, 787, 788, 789, 790, 791, 792, 793, 794, 795, 796, 797, 798, 799, 800, 801, 802, 803, 804, 805, 806, 807, 808, 809, 810, 811, 812, 813, 814, 815, 816, 817, 818, 819, 820, 821, 822, 823, 824, 825, 826, 827, 828, 829, 830, 831, 832, 833, 834, 835, 836, 837, 838, 839, 840, 841, 842, 843, 844, 845, 846, 847, 848, 849, 850, 851, 852, 853, 854, 855, 856, 857, 858, 859, 860, 861, 862, 863, 864, 865, 866, 867, 868, 869, 870, 871, 872, 873, 874, 875, 876, 877, 878, 879, 880, 881, 882, 883, 884, 885, 886, 887, 888, 889, 890, 891, 892, 893, 894, 895, 896, 897, 898, 899, 900, 901, 902, 903, 904, 905, 906, 907, 908, 909, 910, 911, 912, 913, 914, 915, 916, 917, 918, 919, 920, 921, 922, 923, 924, 925, 926, 927, 928, 929, 930, 931, 932, 933, 934, 935, 936, 937, 938, 939, 940, 941, 942, 943, 944, 945, 946, 947, 948, 949, 950, 951, 952, 953, 954, 955, 956, 957, 958, 959, 960, 961, 962, 963, 964, 965, 966, 967, 968, 969, 970, 971, 972, 973, 974, 975, 976, 977, 978, 979, 980, 981, 982, 983, 984, 985, 986, 987, 988, 989, 990, 991, 992, 993, 994, 995, 996, 997, 998, 999, 1000, 1001, 1002, 1003, 1004, 1005, 1006, 1007, 1008, 1009, 1010, 1011, 1012, 1013, 1014, 1015, 1016, 1017, 1018, 1019, 1020, 1021, 1022, 1023, 1024, 1025, 1026, 1027, 1028, 1029, 1030, 1031, 1032, 1033, 1034, 1035, 1036, 1037, 1038, 1039, 1040, 1041, 1042, 1043, 1044, 1045, 1046, 1047, 1048, 1049, 1050, 1051, 1052, 1053, 1054, 1055, 1056, 1057, 1058, 1059, 1060, 1061, 1062, 1063, 1064, 1065, 1066, 1067, 1068, 1069, 1070, 1071, 1072, 1073, 1074, 1075, 1076, 1077, 1078, 1079, 1080, 1081, 1082, 1083, 1084, 1085, 1086, 1087, 1088, 1089, 1090, 1091, 1092, 1093, 1094, 1095, 1096, 1097, 1098, 1099, 1100, 1101, 1102, 1103, 1104, 1105, 1106, 1107, 1108, 1109, 1110, 1111, 1112, 1113, 1114, 1115, 1116, 1117, 1118, 1119, 1120, 1121, 1122, 1123, 1124, 1125, 1126, 1127, 1128, 1129, 1130, 1131, 1132, 1133, 1134, 1135, 1136, 1137, 1138, 1139, 1140, 1141, 1142, 1143, 1144, 1145, 1146, 1147, 1148, 1149, 1150, 1151, 1152, 1153, 1154, 1155, 1156, 1157, 1158, 1159, 1160, 1161, 1162, 1163, 1164, 1165, 1166, 1167, 1168, 1169, 1170, 1171, 1172, 1173, 1174, 1175, 1176, 1177, 1178, 1179, 1180, 1181, 1182, 1183, 1184, 1185, 1186, 1187, 1188, 1189, 1190, 1191, 1192, 1193, 1194, 1195, 1196, 1197, 1198, 1199, 1200, 1201, 1202, 1203, 1204, 1205, 1206, 1207, 1208, 1209, 1210, 1211, 1212, 1213, 1214, 1215, 1216, 1217, 1218, 1219, 1220, 1221, 1222, 1223, 1224, 1225, 1226, 1227, 1228, 1229, 1230, 1231, 1232, 1233, 1234, 1235, 1236, 1237, 1238, 1239, 1240, 1241, 1242, 1243, 1244, 1245, 1246, 1247, 1248, 1249, 1250, 1251, 1252, 1253, 1254, 1255, 1256, 1257, 1258, 1259, 1260, 1261, 1262, 1263, 1264, 1265, 1266, 1267, 1268, 1269, 1270, 1271, 1272, 1273, 1274, 1275, 1276, 1277, 1278, 1279, 1280, 1281, 1282, 1283, 1284, 1285, 1286, 1287, 1288, 1289, 1290, 1291, 1292, 1293, 1294, 1295, 1296, 1297, 1298, 1299, 1300, 1301, 1302, 1303, 1304, 1305, 1306, 1307, 1308, 1309, 1310, 1311, 1312, 1313, 1314, 1315, 1316, 1317, 1318, 1319, 1320, 1321, 1322, 1323, 1324, 1325, 1326, 1327, 1328, 1329, 1330, 1331, 1332, 1333, 1334, 1335, 1336, 1337, 1338, 1339, 1340, 1341, 1342, 1343, 1344, 1345, 1346, 1347, 1348, 1349, 1350, 1351, 1352, 1353, 1354, 1355, 1356, 1357, 1358, 1359, 1360, 1361, 1362, 1363, 1364, 1365, 1366, 1367, 1368, 1369, 1370, 1371, 1372, 1373, 1374, 1375, 1376, 1377, 1378, 1379, 1380, 1381, 1382, 1383, 1384, 1385, 1386, 1387, 1388, 1389, 1390, 1391, 1392, 1393, 1394, 1395, 1396, 1397, 1398, 1399, 1400, 1401, 1402, 1403, 1404, 1405, 1406, 1407, 1408, 1409, 1410, 1411, 1412, 1413, 1414, 1415, 1416, 1417, 1418, 1419, 1420, 1421, 1422, 1423, 1424, 1425, 1426, 1427, 1428, 1429, 1430, 1431, 1432, 1433, 1434, 1435, 1436, 1437, 1438, 1439, 1440, 1441, 1442, 1443, 1444, 1445, 1446, 1447, 1448, 1449, 1450, 1451, 1452, 1453, 1454, 1455, 1456, 1457, 1458, 1459, 1460, 1461, 1462, 1463, 1464, 1465, 1466, 1467, 1468, 1469, 1470, 1471, 1472, 1473, 1474, 1475, 1476, 1477, 1478, 1479, 1480, 1481, 1482, 1483, 1484, 1485, 1486, 1487, 1488, 1489, 1490, 1491, 1492, 1493, 1494, 1495, 1496, 1497, 1498, 1499, 1500, 1501, 1502, 1503, 1504, 1505, 1506, 1507, 1508, 1509, 1510, 1511, 1512, 1513, 1514, 1515, 1516, 1517, 1518, 1519, 1520, 1521, 1522, 1523, 1524, 1525, 1526, 1527, 1528, 1529, 1530, 1531, 1532, 1533, 1534, 1535, 1536, 1537, 1538, 1539, 1540, 1541, 1542, 1543, 1544, 1545, 1546, 1547, 1548, 1549, 1550, 1551, 1552, 1553, 1554, 1555, 1556, 1557, 1558, 1559, 1560, 1561, 1562, 1563, 1564, 1565, 1566, 1567, 1568, 1569, 1570, 1571, 1572, 1573, 1574, 1575, 1576, 1577, 1578, 1579, 1580, 1581, 1582, 1583, 1584, 1585, 1586, 1587, 1588, 1589, 1590, 1591, 1592, 1593, 1594, 1595, 1596, 1597, 1598, 1599, 1600, 1601, 1602, 1603, 1604, 1605, 1606, 1607, 1608, 1609, 1610, 1611, 1612, 1613, 1614, 1615, 1616, 1617, 1618, 1619, 1620, 1621, 1622, 1623, 1624, 1625, 1626, 1627, 1628, 1629, 1630, 1631, 1632, 1633, 1634, 1635, 1636, 1637, 1638, 1639, 1640, 1641, 1642, 1643, 1644, 1645, 1646, 1647, 1648, 1649, 1650, 1651, 1652, 1653, 1654, 1655, 1656, 1657, 1658, 1659, 1660, 1661, 1662, 1663, 1664, 1665, 1666, 1667, 1668, 1669, 1670, 1671, 1672, 1673, 1674, 1675, 1676, 1677, 1678, 1679, 1680, 1681, 1682, 1683, 1684, 1685, 1686, 1687, 1688, 1689, 1690, 1691, 1692, 1693, 1694, 1695, 1696, 1697, 1698, 1699, 1700, 1701, 1702, 1703, 1704, 1705, 1706, 1707, 1708, 1709, 1710, 1711, 1712, 1713, 1714, 1715, 1716, 1717, 1718, 1719, 1720, 1721, 1722, 1723, 1724, 1725, 1726, 1727, 1728, 1729, 1730, 1731, 1732, 1733, 1734, 1735, 1736, 1737, 1738, 1739, 1740, 1741, 1742, 1743, 1744, 1745, 1746, 1747, 1748, 1749, 1750, 1751, 1752, 1753, 1754, 1755, 1756, 1757, 1758, 1759, 1760, 1761, 1762, 1763, 1764, 1765, 1766, 1767, 1768, 1769, 1770, 1771, 1772, 1773, 1774, 1775, 1776, 1777, 1778, 1779, 1780, 1781, 1782, 1783, 1784, 1785, 1786, 1787, 1788, 1789, 1790, 1791, 1792, 1793, 1794, 1795, 1796, 1797, 1798, 1799, 1800, 1801, 1802, 1803, 1804, 1805, 1806, 1807, 1808, 1809, 1810, 1811, 1812, 1813, 1814, 1815, 1816, 1817, 1818, 1819, 1820, 1821, 1822, 1823, 1824, 1825, 1826, 1827, 1828, 1829, 1830, 1831, 1832, 1833, 1834, 1835, 1836, 1837, 1838, 1839, 1840, 1841, 1842, 1843, 1844, 1845, 1846, 1847, 1848, 1849, 1850, 1851, 1852, 1853, 1854, 1855, 1856, 1857, 1858, 1859, 1860, 1861, 1862, 1863, 1864, 1865, 1866, 1867, 1868, 1869, 1870, 1871, 1872, 1873, 1874, 1875, 1876, 1877, 1878, 1879, 1880, 1881, 1882, 1883, 1884, 1885, 1886, 1887, 1888, 1889, 1890, 1891, 1892, 1893, 1894, 1895, 1896, 1897, 1898, 1899, 1900, 1901, 1902, 1903, 1904, 1905, 1906, 1907, 1908, 1909, 1910, 1911, 1912, 1913, 1914, 1915, 1916, 1917, 1918, 1919, 1920, 1921, 1922, 1923, 1924, 1925, 1926, 1927, 1928, 1929, 1930, 1931, 1932, 1933, 1934, 1935, 1936, 1937, 1938, 1939, 1940, 1941, 1942, 1943, 1944, 1945, 1946, 1947, 1948, 1949, 1950, 1951, 1952, 1953, 1954, 1955, 1956, 1957, 1958, 1959, 1960, 1961, 1962, 1963, 1964, 1965, 1966, 1967, 1968, 1969, 1970, 1971, 1972, 1973, 1974, 1975, 1976, 1977, 1978, 1979, 1980, 1981, 1982, 1983, 1984, 1985, 1986, 1987, 1988, 1989, 1990, 1991, 1992, 1993, 1994, 1995, 1996, 1997, 1998, 1999, 2000, 2001, 2002, 2003, 2004, 2005, 2006, 2007, 2008, 2009, 2010, 2011, 2012, 2013, 2014, 2015, 2016, 2017, 2018, 2019, 2020, 2021, 2022, 2023, 2024, 2025, 2026, 2027, 2028, 2029, 2030, 2031, 2032, 2033, 2034, 2035, 2036, 2037, 2038, 2039, 2040, 2041, 2042, 2043, 2044, 2045, 2046, 2047, 2048, 2049, 2050, 2051, 2052, 2053, 2054, 2055, 2056, 2057, 2058, 2059, 2060, 2061, 2062, 2063, 2064, 2065, 2066, 2067, 2068, 2069, 2070, 2071, 2072, 2073, 2074, 2075, 2076, 2077, 2078, 2079, 2080, 2081, 2082, 2083, 2084, 2085, 2086, 2087, 2088, 2089, 2090, 2091, 2092, 2093, 2094, 2095, 2096, 2097, 2098, 2099, 2100, 2101, 2102, 2103, 2104, 2105, 2106, 2107, 2108, 2109, 2110, 2111, 2112, 2113, 2114, 2115, 2116, 2117, 2118, 2119, 2120, 2121, 2122, 2123, 2124, 2125, 2126, 2127, 2128, 2129, 2130, 2131, 2132, 2133, 2134, 2135, 2136, 2137, 2138, 2139, 2140, 2141, 2142, 2143, 2144, 2145, 2146, 2147, 2148, 2149, 2150, 2151, 2152, 2153, 2154, 2155, 2156, 2157, 2158, 2159, 2160, 2161, 2162, 2163, 2164, 2165, 2166, 2167, 2168, 2169, 2170, 2171, 2172, 2173, 2174, 2175, 2176, 2177, 2178, 2179, 2180, 2181, 2182, 2183, 2184, 2185, 2186, 2187, 2188, 2189, 2190, 2191, 2192, 2193, 2194, 2195, 2196, 2197, 2198, 2199, 2200, 2201, 2202, 2203, 2204, 2205, 2206, 2207, 2208, 2209, 2210, 2211, 2212, 2213, 2214, 2215,

EXPOSURE TO OHIO RIVER

BEECHWOOD PARK

CAR SHED CAR SHED
MAYSVILLE STREET RAILWAY & TRANSFER CO.

E. SECOND

CHESTER

E. THIRD

BROADWAY

VINE

FOREST AV.

CAMEL

303

304

305

307

306

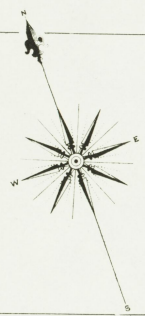
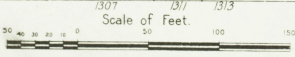
308

309

311

310

50' ST. NOT NAMED
312



14

MAIN

E X P O S U R E

N O

B R O A D W A Y

B R O A D W A Y

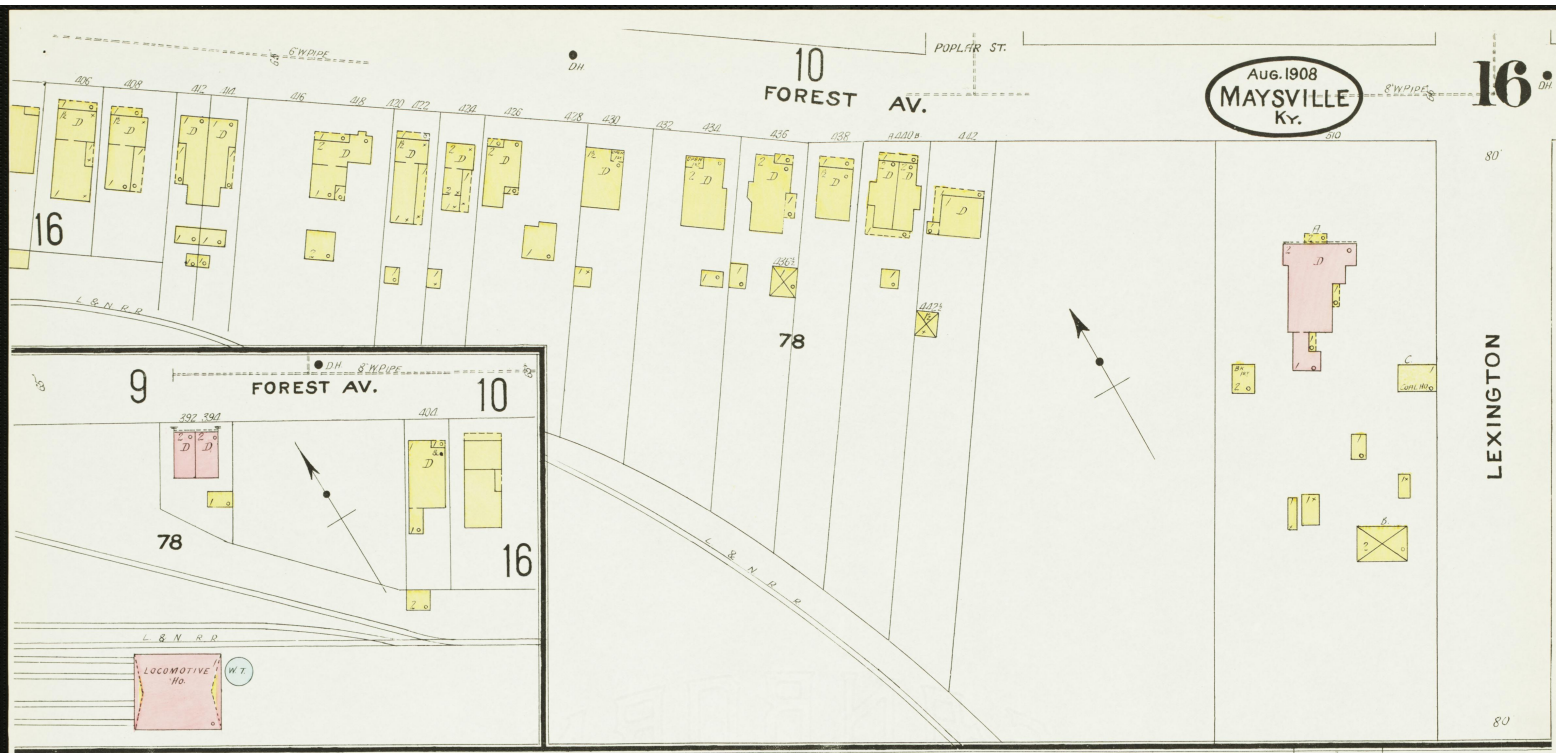
F R O N T

40' C.W.T. 112

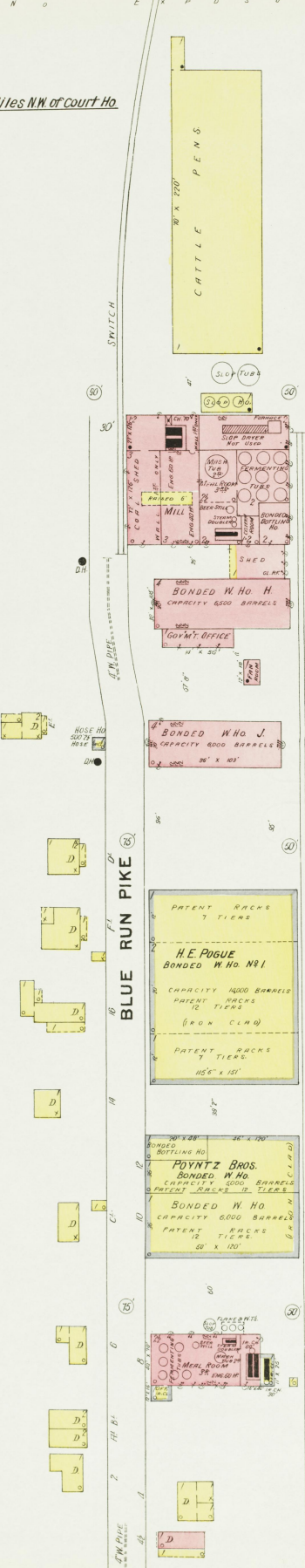
W. & L. 112

Aug. 1908
MAYSVILLE
Ky.

16

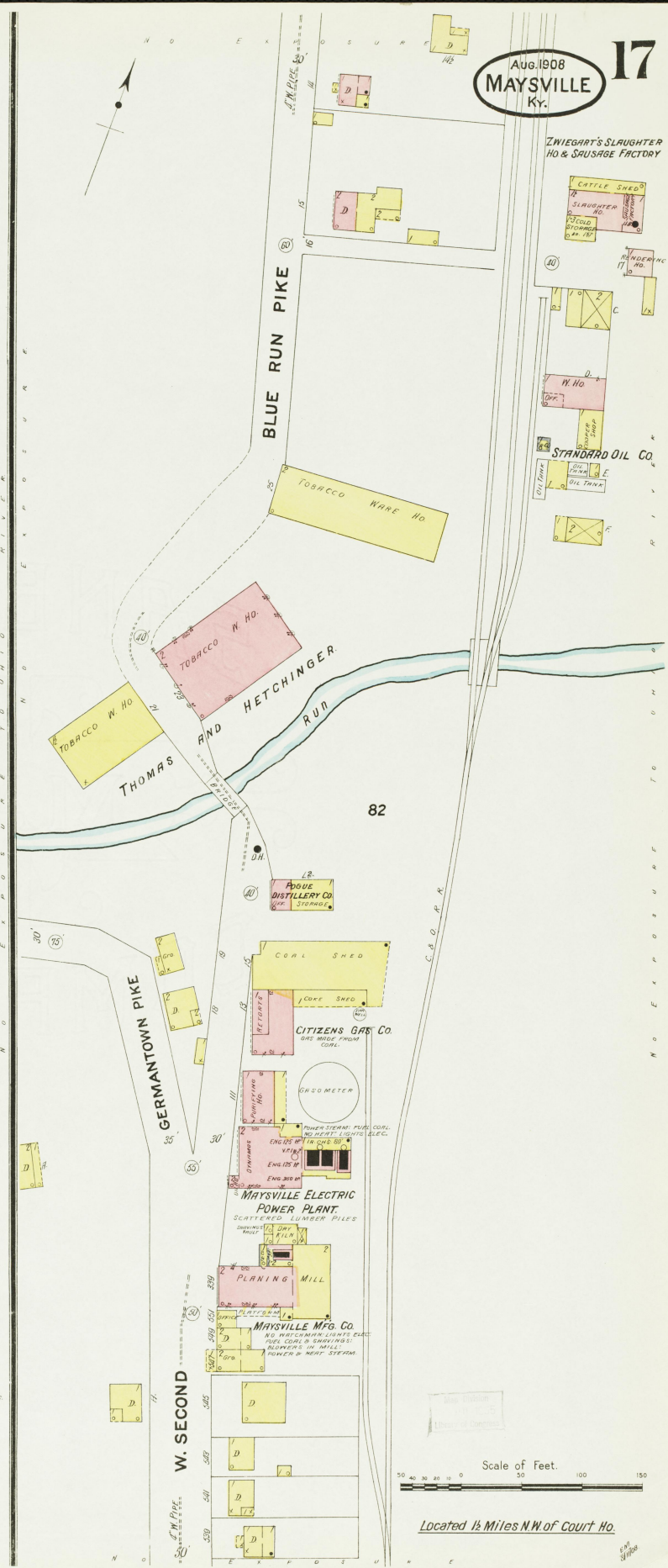


Located 1 3/4 Miles N.W. of Court Ho.



THE H. E. POGUE DISTILLERY CO.
Registered Distillery No. 3.
7th District.
Mason County - Kentucky.
Mash capacity 600 bushels - Yield 456 bushels.
RUN SIX MONTHS A YEAR.
NIGHT WATCHMAN WHEN RUNNING.
FUEL COAL, LIGHTS ELECTRIC, HEAT HOT AIR.
IN W. HO. 18' x 14' - HOLES BY INCIDENT.
AS SHOWN. NO FIRE APPARATUS.

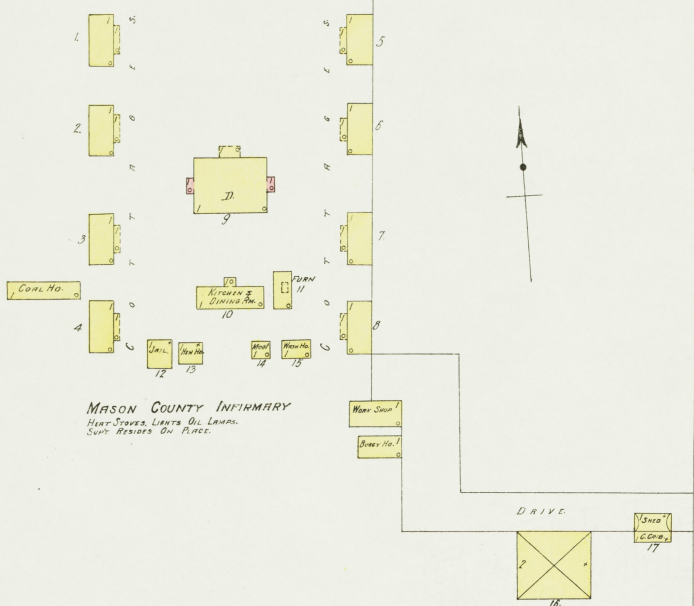
FOYNTZ BROS.
Registered Distillery No. 6.
7th District.
Mason County - Kentucky.
Mash capacity 400 bushels - Yield 300 bushels.
RUNS THREE MONTHS A YEAR.
NIGHT WATCHMAN WHEN RUNNING.
POWER STEAM, FUEL COAL, HEAT STOVE IN
OFFICE, LIGHTS OIL, LANTERNS.
CITY WATER.



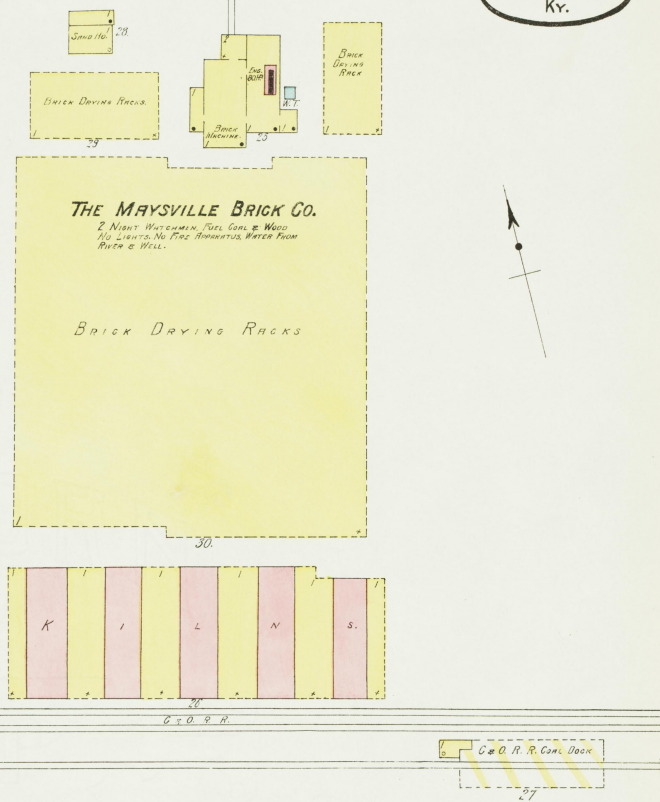
Scale of Feet.
0 50 100 150

Located 1 1/2 Miles N.W. of Court Ho.

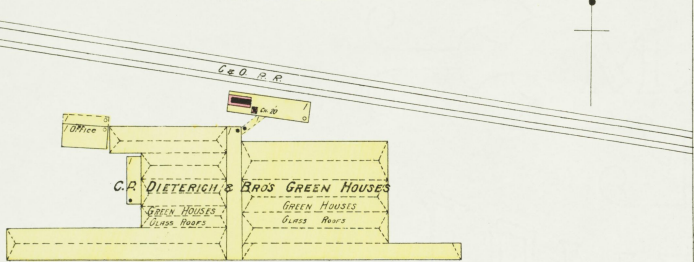
Located 2 Miles S.E. of Court Ho.
No Exposure Any Side



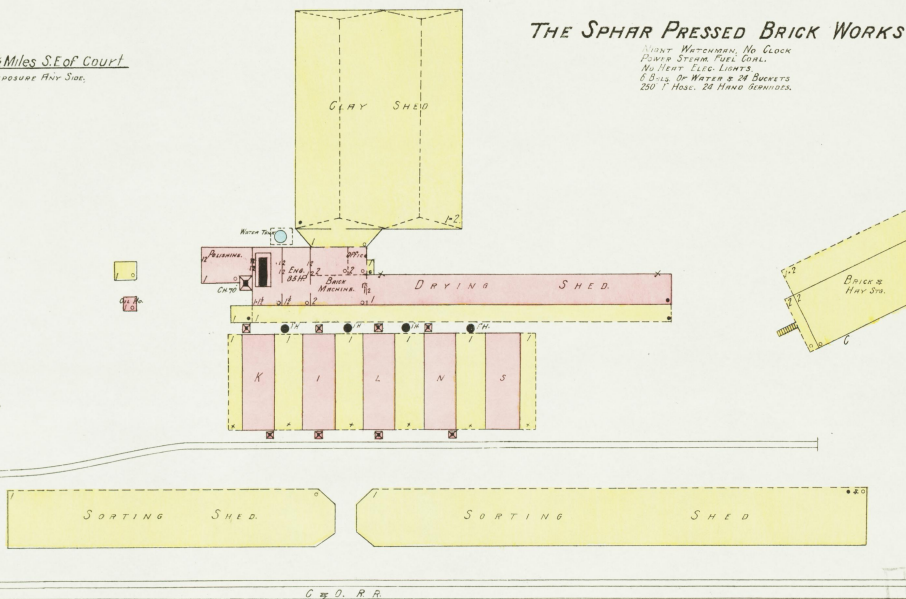
Located 3 Miles S.E. of Court Ho.



Located 1 1/2 Miles S.E. of Court Ho.
No Exposure Any Side



Located 2 1/2 Miles S.E. of Court



Scale of Feet.

