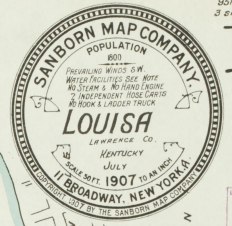
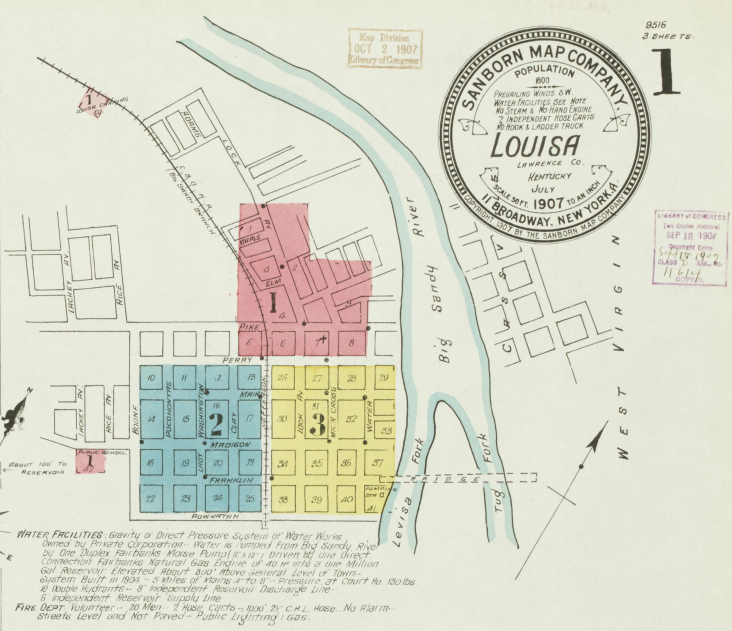


Map Division
OCT 2 1907
Library of Congress



LIBRARY OF CONGRESS
Two copies retained
S.P. 110 1909
Payment made
\$1.15 (1907)
\$1.00 (1908)
\$1.00 (1909)
\$1.00 (1910)
\$1.00 (1911)

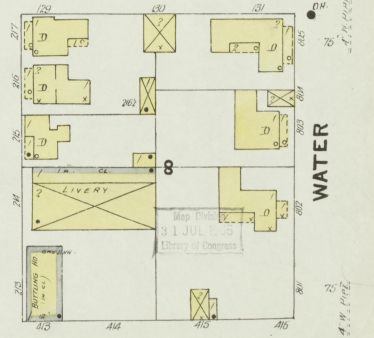
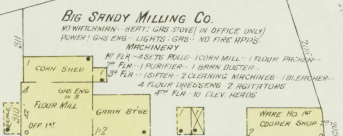
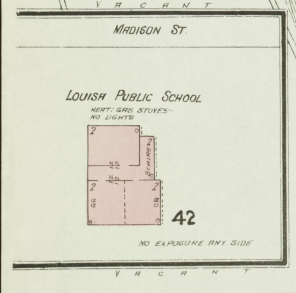


WATER FACILITIES: Gravity or Direct Pressure System of Water Works owned by Private Corporation. Water is pumped from Big Sandy River by the Louisa Railway & Manufacturing Co. a Division of the Direct Connection Railway Natural Gas Engine of 40 H.P. in a one Million Gall. Reservoir, situated about 200' above normal level of town. System built in 1904 - 5 miles of mains 4" to 8" pressure at Court No. 10. 10 lbs. at 100' height. 6" independent Reservoir Discharge Line. 6" independent Reservoir Supply Line.

FIRE DEPT. Equipment - 20 Men, 2 Hoses, Carts - 100' 2 1/2" L. Hose. No Alarm. Standard Level and Non-Parved - Public Lighting - 100.

INDEX

SPECIALS	C	N
Arlington Hotel..... 3	C. & O. R. R. Freight Depot..... 1	Methodist Episcopal Church..... 3
Baptist Church..... 2	" Passenger Depot..... 2	County Court House & Jail..... 1
Big Sandy Milling Co..... 1	City Hall..... 1	Riverside Hospital..... 1
Boggs, M. L., Saw Mill..... 3	County Court House & Jail..... 1	School Building..... 2
Burchett, D. J., Jr., Feed Mill..... 3	Louis Canning Co..... 1	Standard Oil Co..... 1
	Big Sandy Milling Co..... 1	
	" Public School..... 1	
	" Water Works & Pumping Station..... 3	



Scale of Feet.

