

Vistas

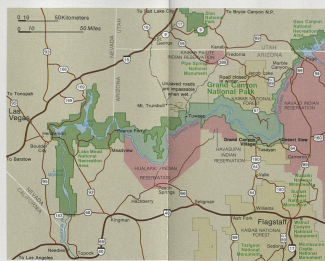
Grand Canyon has some of the most spectacular vistas imaginable. On the South Rim you can see the colorful rock rim from Moenkopi, Loam, and Navajo. From the North Rim you can see the Kaibab Plateau, the Grand Canyon, and the Colorado Plateau. For a view of the canyon from the South Rim, visit the Grand Canyon Overlook. For a view of the canyon from the North Rim, visit the Grand Canyon Overlook. For a view of the canyon from the South Rim, visit the Grand Canyon Overlook. For a view of the canyon from the North Rim, visit the Grand Canyon Overlook.

Canyon Extraordinary

Grand Canyon of the Colorado River is not only awe-inspiring in its depth and mind-boggling in its extent, but it possesses a dazzling, constantly changing display of colors, light, and shadow. The canyon's statistics are truly extraordinary. It is approximately 1.6 kilometers (1 mile) deep. From rim to rim it cradles from 180 meters to 30 kilometers (600 feet to 10 miles) wide. And measuring all the miles and turns of the river, the canyon is 443 kilometers (277 miles) long. Moving at only a moderate speed, the river can easily carry boulders weighing more than a ton. It is the power of moving water that has created this canyon. In concert with the water, wind, gravity, and the erosive force of oxidation and contraction caused by fluctuating temperatures, earth and rock have moved downward to the river, leaving a multitude of smaller canyons behind. The process has taken millions of years, and it is still going on.

World Heritage Status

Grand Canyon National Park is a World Heritage Site, whose universal significance is best protected as a common legacy for all people.



The map at right shows how to travel between the two rim sections of Grand Canyon National Park: the South Rim and North Rim. While you're in the area, you also might want to visit other National Park System areas. South of the park are Walnut Canyon, and North of the park are Navajo National Monument, Canyon de Chelly National Monument, and Petrified Forest National Monument. In northern Arizona, Lake Mead and Glen Canyon National Recreation Areas provide water activities on over 600 kilometers (373 miles) of the Colorado River. Just east of Grand Canyon National Park is Bryce Canyon National Park in Utah. Feature colorful scenery.

Safety

Do not throw any object over the canyon rim. Firearms and objects can be fired and fall.

The Colorado River is a major water source. Do not drink or use water from the river.

Most of the rock is currently very hot and can be very slippery. Do not walk on the canyon walls.

The maximum park speed limit is 25 mph (40 km/h) per hour. Do not drink and drive. Do not drink and drive.

Guide and Adviser



newspaper, containing up-to-date information about the park.

One additional note: The North and South Rims are only 16 kilometers (10 miles) apart. The South Rim has a greater range of facilities and is open all year. Because of its higher elevation and greater snowfall, the North Rim is closed from late October to mid-May.

Activities

One way to gain an easy introduction to the canyon is to go along the East and West Rim Drives on the South Rim. If you enter the park from the east, you will naturally follow the East Rim Drive on your way to Grand Canyon Village.

On the North Rim the drive from Grand Canyon Lodge to Cape Royal and to Point Imperial give you a chance to look across the canyon to the "Painted Desert" and to see spectacular canyon views.

For those who wish to go below the rim into the canyon itself, one of the most exciting ways is by mule. From the South Rim one-day trips to Plateau Point and overnight trips to Phantom Ranch run year-round, weather permitting. From the North Rim mule trips go only as far as Roaring Springs, a one-day trip. For these trips from the South Rim you should have an advance reservation. For

reservations from the South Rim, write: Reservations Dept., Grand Canyon National Park, Lodges, Grand Canyon, AZ 86023. From the North Rim write to Grand Canyon Trail Riders, Box 1838, Cochrise, UT 84720. Horse trips are offered on both rims, too.

The park's trails, both along the rims and down into the canyon, give the hiker a chance to see many differing aspects of the canyon. Permits are not needed for day hikes but must be obtained for overnight hikes into the canyon. Contact the Backcountry Reservations Office, Grand Canyon, AZ 86023, for information on getting a permit. Whatever the length of your hike, make sure that you only drink at least 2 liters (2 quarts) of water per person per day. Summer temperatures in the canyon average 40°C (104°F), so wear a hat and do not over-exert yourself. Remember, too, that the easy part, the descent, comes first when you are fresh and rested; the climb back out—and it is a steady, unintermittent climb—comes when you are tired. Pets are not allowed on any trails below the rim. Ask for safety suggestions from a ranger at an information

center. For information on getting a permit, whatever the length of your hike, make sure that you only drink at least 2 liters (2 quarts) of water per person per day. Summer temperatures in the canyon average 40°C (104°F), so wear a hat and do not over-exert yourself. Remember, too, that the easy part, the descent, comes first when you are fresh and rested; the climb back out—and it is a steady, unintermittent climb—comes when you are tired. Pets are not allowed on any trails below the rim. Ask for safety suggestions from a ranger at an information

center. For information on getting a permit, whatever the length of your hike, make sure that you only drink at least 2 liters (2 quarts) of water per person per day. Summer temperatures in the canyon average 40°C (104°F), so wear a hat and do not over-exert yourself. Remember, too, that the easy part, the descent, comes first when you are fresh and rested; the climb back out—and it is a steady, unintermittent climb—comes when you are tired. Pets are not allowed on any trails below the rim. Ask for safety suggestions from a ranger at an information

center. For information on getting a permit, whatever the length of your hike, make sure that you only drink at least 2 liters (2 quarts) of water per person per day. Summer temperatures in the canyon average 40°C (104°F), so wear a hat and do not over-exert yourself. Remember, too, that the easy part, the descent, comes first when you are fresh and rested; the climb back out—and it is a steady, unintermittent climb—comes when you are tired. Pets are not allowed on any trails below the rim. Ask for safety suggestions from a ranger at an information

center. For information on getting a permit, whatever the length of your hike, make sure that you only drink at least 2 liters (2 quarts) of water per person per day. Summer temperatures in the canyon average 40°C (104°F), so wear a hat and do not over-exert yourself. Remember, too, that the easy part, the descent, comes first when you are fresh and rested; the climb back out—and it is a steady, unintermittent climb—comes when you are tired. Pets are not allowed on any trails below the rim. Ask for safety suggestions from a ranger at an information

Services

Grand Canyon Village has a full range of services. The hotels and most tourist businesses are open all year. Available in the village are lodging, food, service station, ambulance, medical clinic, pharmacy, trail equipment, taxi, pet services, security and barber shops, dry cleaner, bank, souvenir shops, post office, and tent and trailer campgrounds. Desert View has a general store, service station, food, and souvenir shops. Some of these places are closed in the winter.

The North Rim has food, lodging, service station, post office, laundry, grocery, general store, and tent campground. These are usually open from Memorial Day to mid-October.

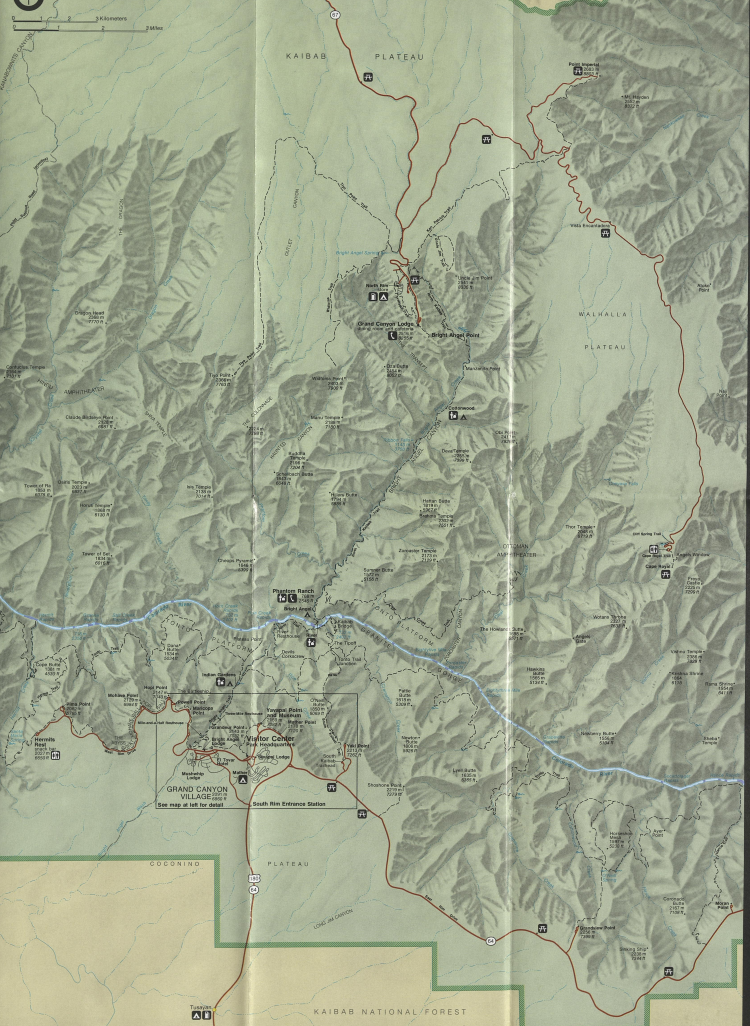
Tourist services and airports can be found in the communities outside the park. Use the area map above to see which town is nearest you. The U.S. Forest Service also operates campgrounds north and south of the park.

South of the park, tourist services are available at Tuzigoot, Cameron, Flagstaff, and Williams. To the north, Jacob Lake, Marble Canyon, and Fredonia, Arizona, and Kanab, Utah, offer tourist services.

For information write to the superintendent, Grand Canyon National Park, Grand Canyon, AZ 86023.

North Rim to South Rim

The canyon's two rims are 16 kilometers (10 miles) apart. Besides the road connection, they also are linked by a trail that crosses the Colorado River on a small suspension bridge wide enough to carry a person and a mule. The North Rim is about 300 meters (1,000 feet) higher than the South Rim, and the weather is considerably cooler and wetter. The North Rim is largely a stone's throw away from the South Rim, and it is a relatively easy drive to both rim areas. These differences make a visit to both rim areas worth your while.

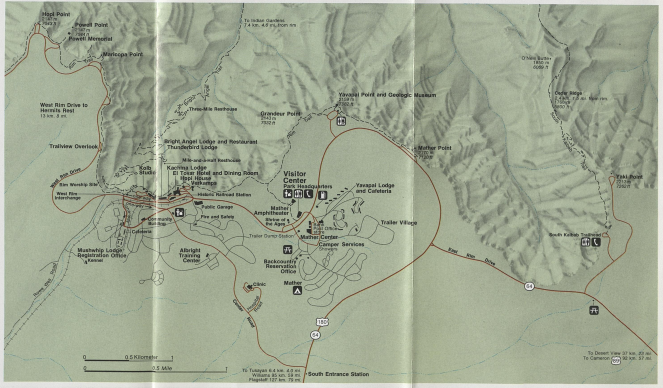


Grand Canyon

Grand Canyon Village

The map below shows where you can find a full range of tourist accommodations and services.

The staff at the visitor center can help provide answers to your questions.



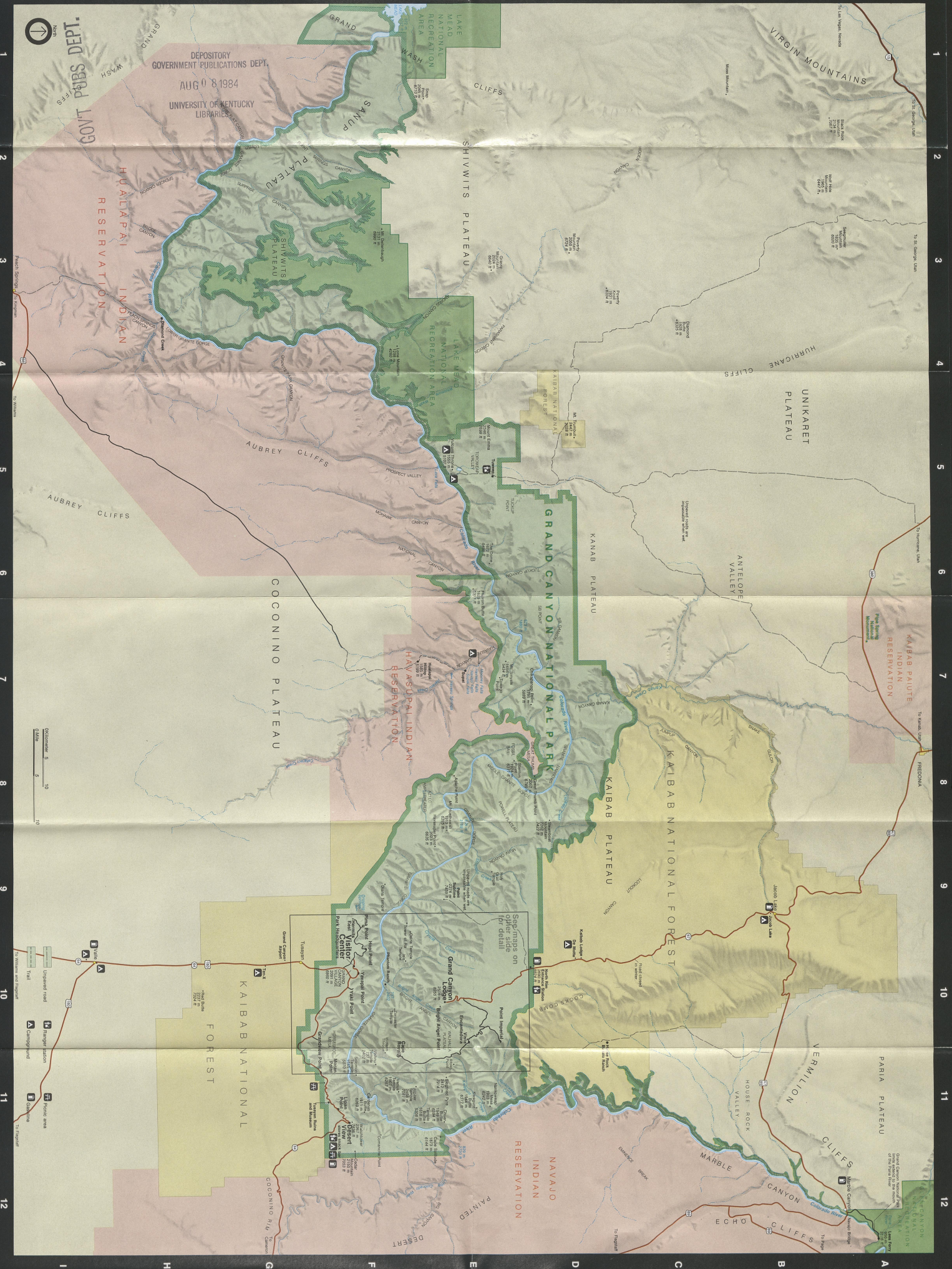
1997 Map © 1997 NPS

Grand Canyon

Grand Canyon National Park
Arizona

National Park Service
U.S. Department of the Interior

H 640
I 29 16
G 76 18 92



A B C D E F G H
1 2 3 4 5 6 7 8 9 10 11 12