

**WATER FACILITIES:**  
Water system owned by private company. System installed in 1927. Gravity & Direct-pumping system. Supply from never-failing creek. One Jonesville pump & one Worthington pump, capacity 300 gals. each per min., pumping into two storages of 250,000 gals. and 17,000 gals. capacity. Domestic pressure 40 lbs. Fire pressure 100 lbs. per sq. inch. 14 hydrants & 7 single hydrants. 10 Miles of water mains 4" to 16".

**FIRE DEPT.:**  
Volunteer. 1 Chief, 12 Men. Man sleeps at Fire Station. 2 hose carts, 200' hose. Two 40' extension ladders. Five 3 gal. chem. fire extingu. Alarm given by ringing of bells.

Elevations not uniform. Streets mostly macadamized. Public lights, electric.

- KEY**
- FIRE WALL, ADV. ROOF
  - HETAL CORNER, ADV. ROOF
  - WOOD CORNER, ADV. ROOF
  - LINDEN, ADV. ROOF
  - OFFICE WALL, ADV. ROOF
  - FRAME PARTITION
  - OPENING WITH NON DOOR
  - HETAL DOOR
  - WINDOW & DOOR SILLINGS
  - WINDOW, 1ST STORY
  - WINDOW, 2ND STORY
  - WINDOW, 3RD STORY
  - WINDOW, 4TH STORY
  - WINDOW, 5TH STORY
  - WINDOW, 6TH STORY
  - WINDOW, 7TH STORY
  - WINDOW, 8TH STORY
  - WINDOW, 9TH STORY
  - WINDOW, 10TH STORY
  - WINDOW, 11TH STORY
  - WINDOW, 12TH STORY
  - WINDOW, 13TH STORY
  - WINDOW, 14TH STORY
  - WINDOW, 15TH STORY
  - WINDOW, 16TH STORY
  - WINDOW, 17TH STORY
  - WINDOW, 18TH STORY
  - WINDOW, 19TH STORY
  - WINDOW, 20TH STORY

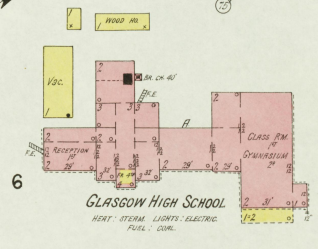
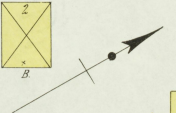
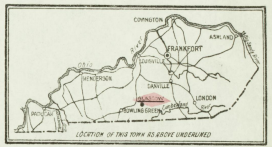
### INDEX

STREETS	SHEET	STREET	SHEET
Broadway, N.	B	Baptist Church	B
College, E.	C	Bethel Moore Tobacco Co.	B
Common, S.	S	Bethel Moore Tobacco Co. Factory	B
Green, S.	G	Bethel Moore Tobacco Co. Warehouse	B
Jefferson	J	Bethel Moore Tobacco Co. Yard	B
Lewis, S.	L	Bethel Moore Tobacco Co. Office	B
Morgan, S.	M	Bethel Moore Tobacco Co. Store	B
Ray, S.	R	Bethel Moore Tobacco Co. Shop	B
Washington, E.	W	Bethel Moore Tobacco Co. Station	B
Water, S.	W	Bethel Moore Tobacco Co. Truck	B

### SPECIALS

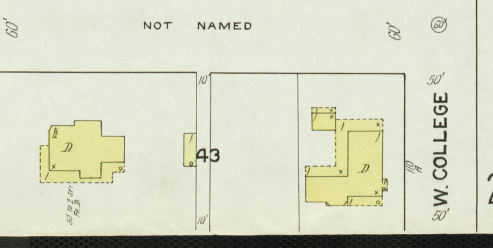
- American Tobacco Co. Prize Barn..... 5
- L. & N. R. E. Depot..... 4
- Zigler, C. E. Tobacco Primary..... 6

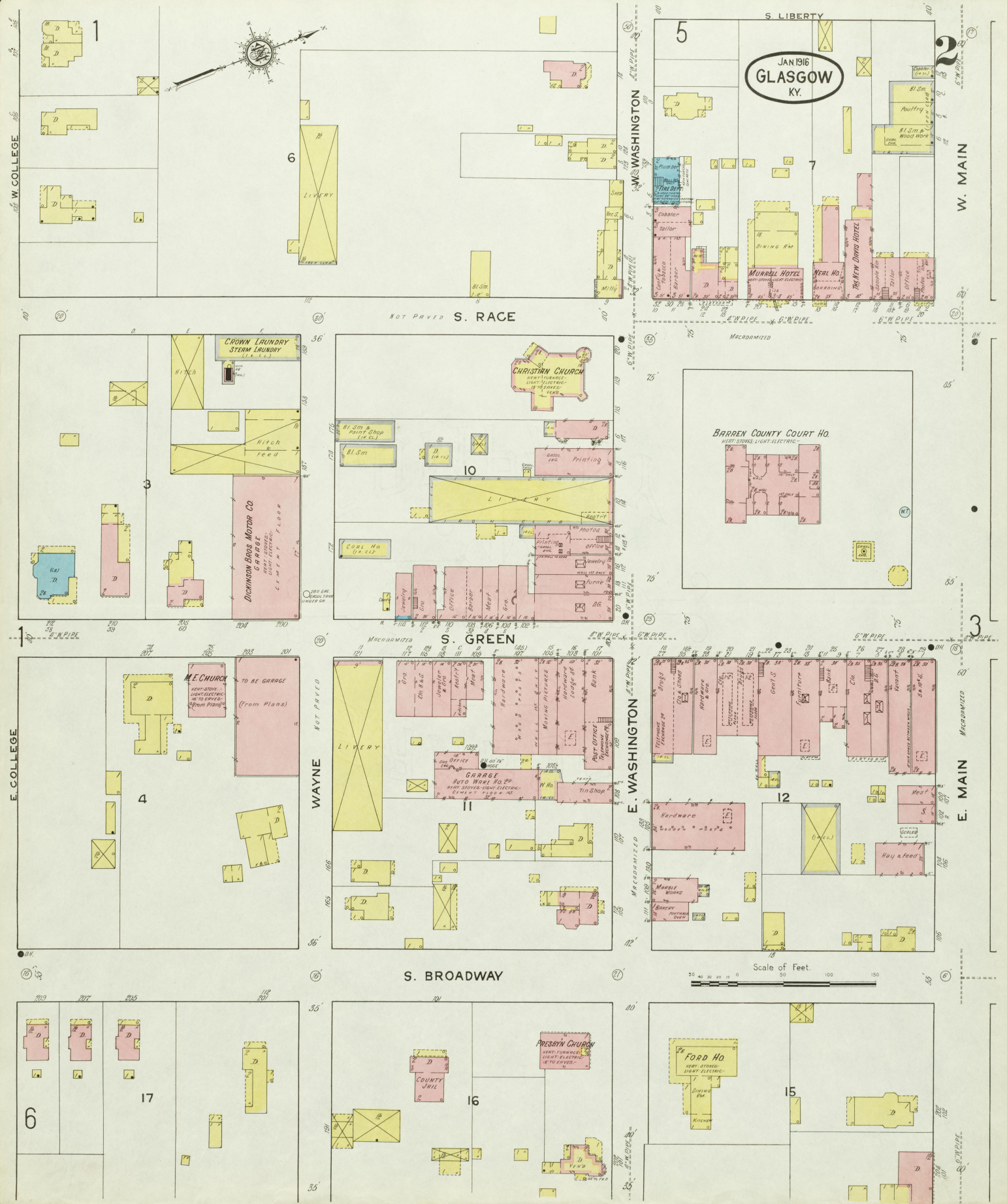
• Indicates only one side of Street shown.



GLASGOW HIGH SCHOOL  
HEAT: STEAM. LIGHTS: ELECTRIC.  
FUEL: COAL.

Scale of Feet. 0 50 100 150





JAN 1916  
**GLASGOW**  
KY.

W. COLLEGE

W. WASHINGTON

W. MAIN

NOT PAVED S. RACE

MACADAMIZED

S. GREEN

E. WASHINGTON

E. MAIN

WAYNE

S. BROADWAY

Scale of Feet.

1

5

2

7

36

10

3

1

E. COLLEGE

4

WAYNE

11

12

6

17

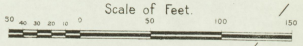
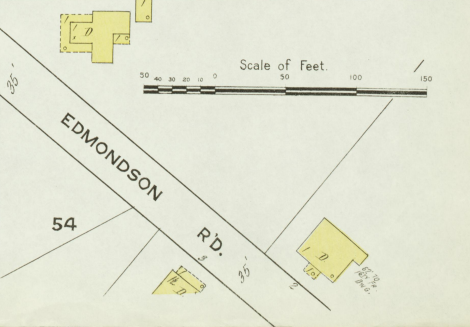
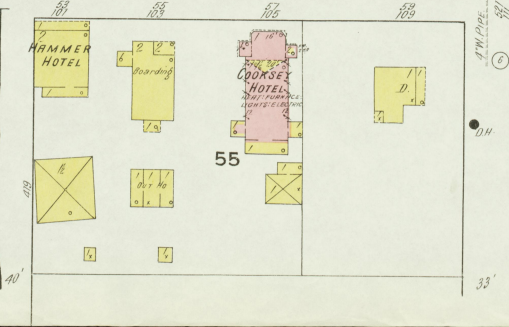
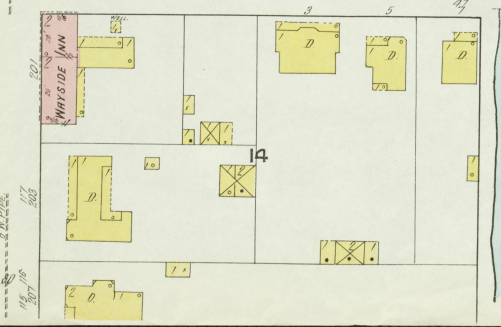
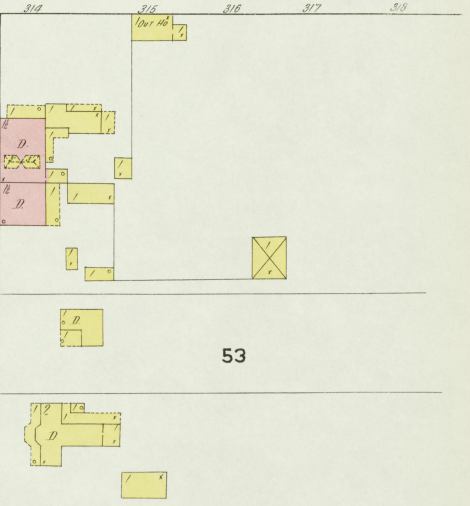
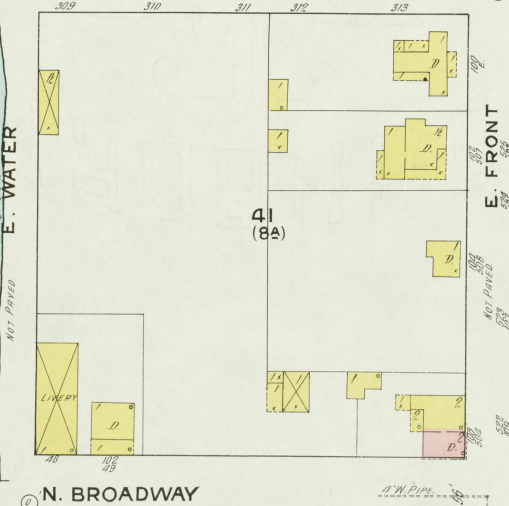
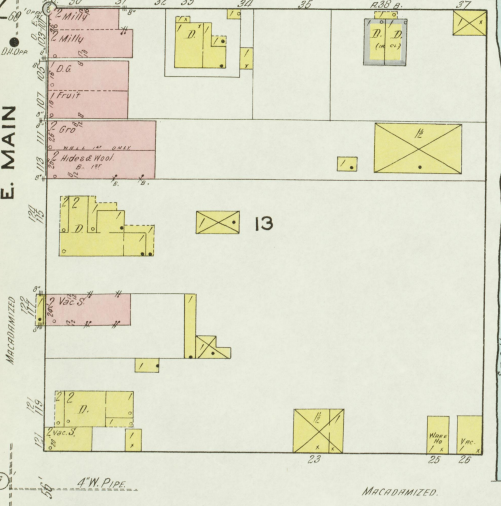
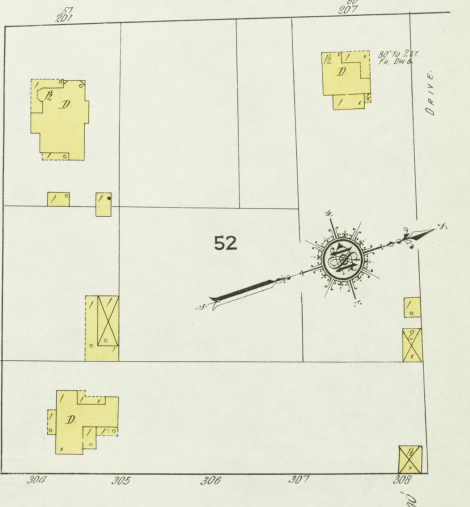
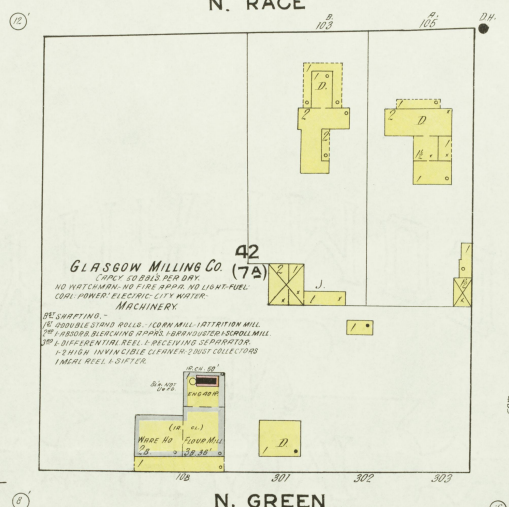
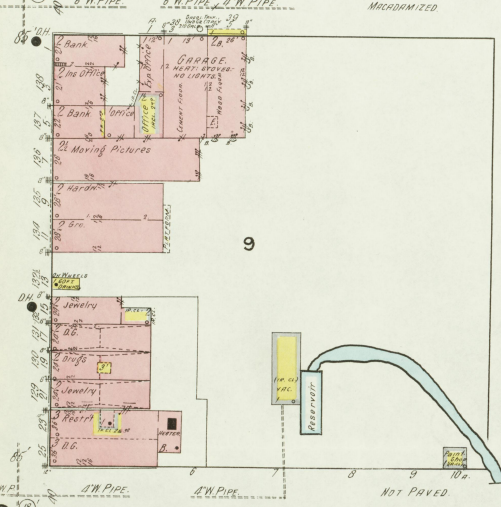
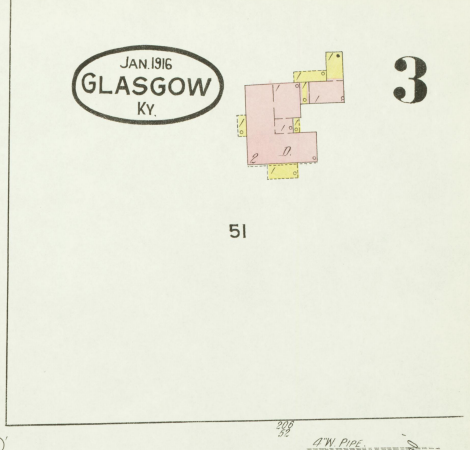
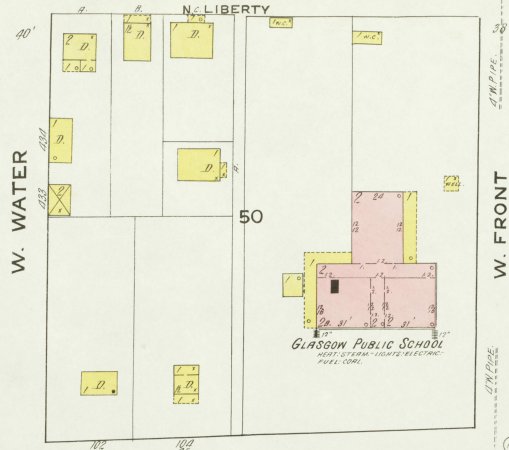
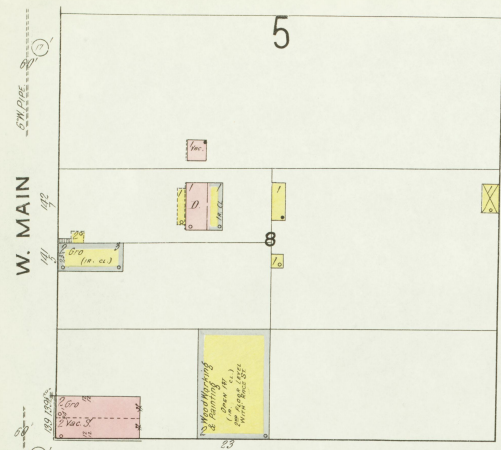
35

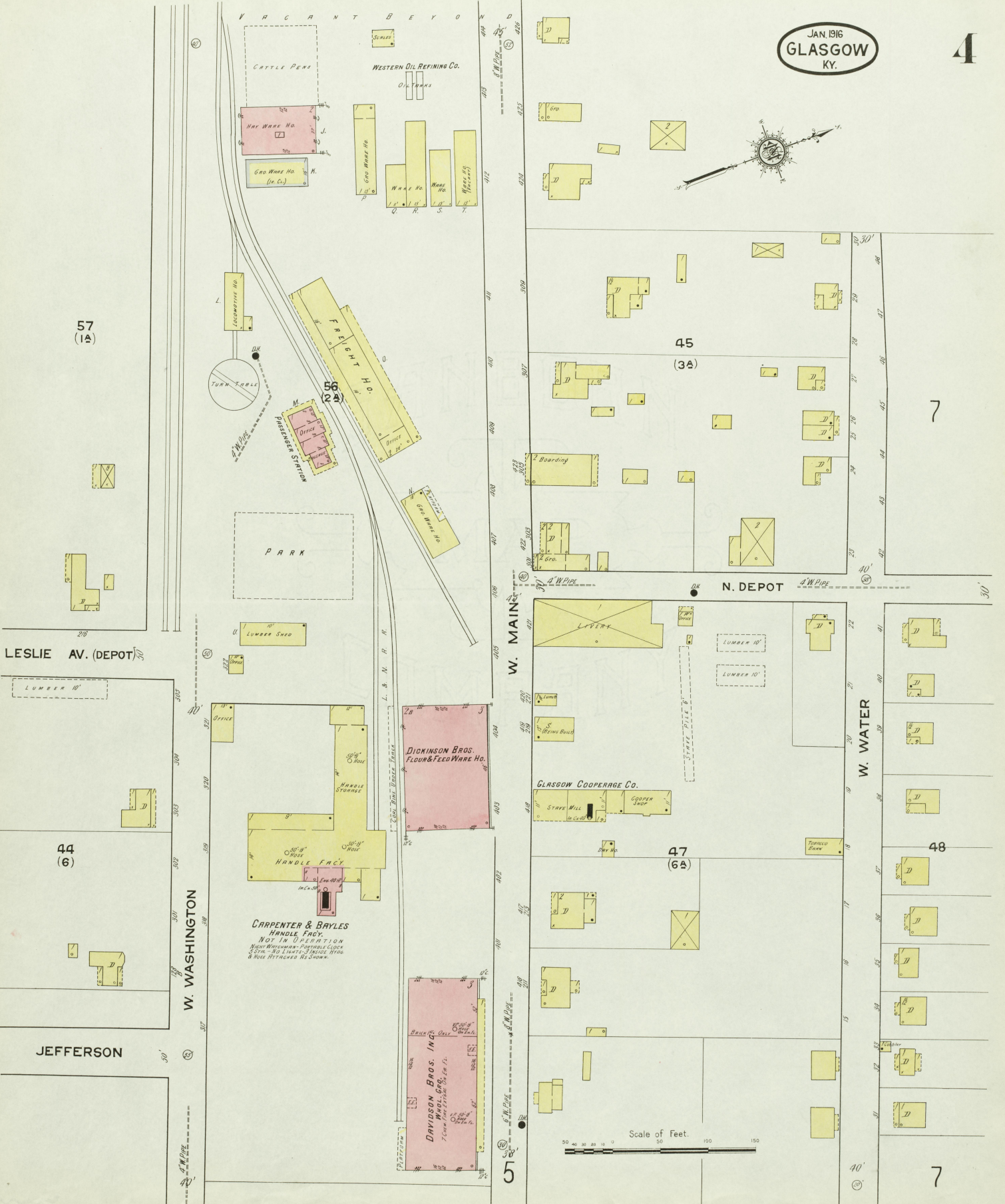
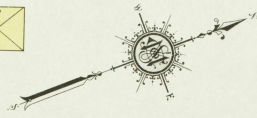
16

15

JAN 1916  
**GLASGOW**  
KY.

**3**





7

48

7

Scale of Feet.  
0 50 100 150

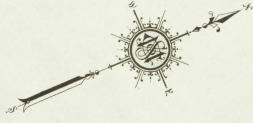
CARPENTER & BAYLES  
HANDLE FAC.  
NOT IN OPERATION  
Near Warehouse - Portable Crane  
Saw - No. 1 - 2 - 3 - 4 - 5 - 6 - 7 - 8 - 9 - 10 - 11 - 12 - 13 - 14 - 15 - 16 - 17 - 18 - 19 - 20 - 21 - 22 - 23 - 24 - 25 - 26 - 27 - 28 - 29 - 30 - 31 - 32 - 33 - 34 - 35 - 36 - 37 - 38 - 39 - 40 - 41 - 42 - 43 - 44 - 45 - 46 - 47 - 48 - 49 - 50 - 51 - 52 - 53 - 54 - 55 - 56 - 57 - 58 - 59 - 60 - 61 - 62 - 63 - 64 - 65 - 66 - 67 - 68 - 69 - 70 - 71 - 72 - 73 - 74 - 75 - 76 - 77 - 78 - 79 - 80 - 81 - 82 - 83 - 84 - 85 - 86 - 87 - 88 - 89 - 90 - 91 - 92 - 93 - 94 - 95 - 96 - 97 - 98 - 99 - 100 - 101 - 102 - 103 - 104 - 105 - 106 - 107 - 108 - 109 - 110 - 111 - 112 - 113 - 114 - 115 - 116 - 117 - 118 - 119 - 120 - 121 - 122 - 123 - 124 - 125 - 126 - 127 - 128 - 129 - 130 - 131 - 132 - 133 - 134 - 135 - 136 - 137 - 138 - 139 - 140 - 141 - 142 - 143 - 144 - 145 - 146 - 147 - 148 - 149 - 150 - 151 - 152 - 153 - 154 - 155 - 156 - 157 - 158 - 159 - 160 - 161 - 162 - 163 - 164 - 165 - 166 - 167 - 168 - 169 - 170 - 171 - 172 - 173 - 174 - 175 - 176 - 177 - 178 - 179 - 180 - 181 - 182 - 183 - 184 - 185 - 186 - 187 - 188 - 189 - 190 - 191 - 192 - 193 - 194 - 195 - 196 - 197 - 198 - 199 - 200 - 201 - 202 - 203 - 204 - 205 - 206 - 207 - 208 - 209 - 210 - 211 - 212 - 213 - 214 - 215 - 216 - 217 - 218 - 219 - 220 - 221 - 222 - 223 - 224 - 225 - 226 - 227 - 228 - 229 - 230 - 231 - 232 - 233 - 234 - 235 - 236 - 237 - 238 - 239 - 240 - 241 - 242 - 243 - 244 - 245 - 246 - 247 - 248 - 249 - 250 - 251 - 252 - 253 - 254 - 255 - 256 - 257 - 258 - 259 - 260 - 261 - 262 - 263 - 264 - 265 - 266 - 267 - 268 - 269 - 270 - 271 - 272 - 273 - 274 - 275 - 276 - 277 - 278 - 279 - 280 - 281 - 282 - 283 - 284 - 285 - 286 - 287 - 288 - 289 - 290 - 291 - 292 - 293 - 294 - 295 - 296 - 297 - 298 - 299 - 300 - 301 - 302 - 303 - 304 - 305 - 306 - 307 - 308 - 309 - 310 - 311 - 312 - 313 - 314 - 315 - 316 - 317 - 318 - 319 - 320 - 321 - 322 - 323 - 324 - 325 - 326 - 327 - 328 - 329 - 330 - 331 - 332 - 333 - 334 - 335 - 336 - 337 - 338 - 339 - 340 - 341 - 342 - 343 - 344 - 345 - 346 - 347 - 348 - 349 - 350 - 351 - 352 - 353 - 354 - 355 - 356 - 357 - 358 - 359 - 360 - 361 - 362 - 363 - 364 - 365 - 366 - 367 - 368 - 369 - 370 - 371 - 372 - 373 - 374 - 375 - 376 - 377 - 378 - 379 - 380 - 381 - 382 - 383 - 384 - 385 - 386 - 387 - 388 - 389 - 390 - 391 - 392 - 393 - 394 - 395 - 396 - 397 - 398 - 399 - 400 - 401 - 402 - 403 - 404 - 405 - 406 - 407 - 408 - 409 - 410 - 411 - 412 - 413 - 414 - 415 - 416 - 417 - 418 - 419 - 420 - 421 - 422 - 423 - 424 - 425 - 426 - 427 - 428 - 429 - 430 - 431 - 432 - 433 - 434 - 435 - 436 - 437 - 438 - 439 - 440 - 441 - 442 - 443 - 444 - 445 - 446 - 447 - 448 - 449 - 450 - 451 - 452 - 453 - 454 - 455 - 456 - 457 - 458 - 459 - 460 - 461 - 462 - 463 - 464 - 465 - 466 - 467 - 468 - 469 - 470 - 471 - 472 - 473 - 474 - 475 - 476 - 477 - 478 - 479 - 480 - 481 - 482 - 483 - 484 - 485 - 486 - 487 - 488 - 489 - 490 - 491 - 492 - 493 - 494 - 495 - 496 - 497 - 498 - 499 - 500 - 501 - 502 - 503 - 504 - 505 - 506 - 507 - 508 - 509 - 510 - 511 - 512 - 513 - 514 - 515 - 516 - 517 - 518 - 519 - 520 - 521 - 522 - 523 - 524 - 525 - 526 - 527 - 528 - 529 - 530 - 531 - 532 - 533 - 534 - 535 - 536 - 537 - 538 - 539 - 540 - 541 - 542 - 543 - 544 - 545 - 546 - 547 - 548 - 549 - 550 - 551 - 552 - 553 - 554 - 555 - 556 - 557 - 558 - 559 - 560 - 561 - 562 - 563 - 564 - 565 - 566 - 567 - 568 - 569 - 570 - 571 - 572 - 573 - 574 - 575 - 576 - 577 - 578 - 579 - 580 - 581 - 582 - 583 - 584 - 585 - 586 - 587 - 588 - 589 - 590 - 591 - 592 - 593 - 594 - 595 - 596 - 597 - 598 - 599 - 600 - 601 - 602 - 603 - 604 - 605 - 606 - 607 - 608 - 609 - 610 - 611 - 612 - 613 - 614 - 615 - 616 - 617 - 618 - 619 - 620 - 621 - 622 - 623 - 624 - 625 - 626 - 627 - 628 - 629 - 630 - 631 - 632 - 633 - 634 - 635 - 636 - 637 - 638 - 639 - 640 - 641 - 642 - 643 - 644 - 645 - 646 - 647 - 648 - 649 - 650 - 651 - 652 - 653 - 654 - 655 - 656 - 657 - 658 - 659 - 660 - 661 - 662 - 663 - 664 - 665 - 666 - 667 - 668 - 669 - 670 - 671 - 672 - 673 - 674 - 675 - 676 - 677 - 678 - 679 - 680 - 681 - 682 - 683 - 684 - 685 - 686 - 687 - 688 - 689 - 690 - 691 - 692 - 693 - 694 - 695 - 696 - 697 - 698 - 699 - 700 - 701 - 702 - 703 - 704 - 705 - 706 - 707 - 708 - 709 - 710 - 711 - 712 - 713 - 714 - 715 - 716 - 717 - 718 - 719 - 720 - 721 - 722 - 723 - 724 - 725 - 726 - 727 - 728 - 729 - 730 - 731 - 732 - 733 - 734 - 735 - 736 - 737 - 738 - 739 - 740 - 741 - 742 - 743 - 744 - 745 - 746 - 747 - 748 - 749 - 750 - 751 - 752 - 753 - 754 - 755 - 756 - 757 - 758 - 759 - 760 - 761 - 762 - 763 - 764 - 765 - 766 - 767 - 768 - 769 - 770 - 771 - 772 - 773 - 774 - 775 - 776 - 777 - 778 - 779 - 780 - 781 - 782 - 783 - 784 - 785 - 786 - 787 - 788 - 789 - 790 - 791 - 792 - 793 - 794 - 795 - 796 - 797 - 798 - 799 - 800 - 801 - 802 - 803 - 804 - 805 - 806 - 807 - 808 - 809 - 810 - 811 - 812 - 813 - 814 - 815 - 816 - 817 - 818 - 819 - 820 - 821 - 822 - 823 - 824 - 825 - 826 - 827 - 828 - 829 - 830 - 831 - 832 - 833 - 834 - 835 - 836 - 837 - 838 - 839 - 840 - 841 - 842 - 843 - 844 - 845 - 846 - 847 - 848 - 849 - 850 - 851 - 852 - 853 - 854 - 855 - 856 - 857 - 858 - 859 - 860 - 861 - 862 - 863 - 864 - 865 - 866 - 867 - 868 - 869 - 870 - 871 - 872 - 873 - 874 - 875 - 876 - 877 - 878 - 879 - 880 - 881 - 882 - 883 - 884 - 885 - 886 - 887 - 888 - 889 - 890 - 891 - 892 - 893 - 894 - 895 - 896 - 897 - 898 - 899 - 900 - 901 - 902 - 903 - 904 - 905 - 906 - 907 - 908 - 909 - 910 - 911 - 912 - 913 - 914 - 915 - 916 - 917 - 918 - 919 - 920 - 921 - 922 - 923 - 924 - 925 - 926 - 927 - 928 - 929 - 930 - 931 - 932 - 933 - 934 - 935 - 936 - 937 - 938 - 939 - 940 - 941 - 942 - 943 - 944 - 945 - 946 - 947 - 948 - 949 - 950 - 951 - 952 - 953 - 954 - 955 - 956 - 957 - 958 - 959 - 960 - 961 - 962 - 963 - 964 - 965 - 966 - 967 - 968 - 969 - 970 - 971 - 972 - 973 - 974 - 975 - 976 - 977 - 978 - 979 - 980 - 981 - 982 - 983 - 984 - 985 - 986 - 987 - 988 - 989 - 990 - 991 - 992 - 993 - 994 - 995 - 996 - 997 - 998 - 999 - 1000

JEFFERSON

4

JAN. 196  
GLASGOW  
Ky.

5



47

W. WATER

NEW

7

TERRACE LAWN HO.

AMERICAN TOBACCO CO PRIZE BARN BEST

D. C. BETTISON PRIZE BARN BEST

C. WATKINS & CO PRIZE BARN BEST  
(COR. MEN ON STUBBINS)

6

56

49

W. MAIN

GARAGE

HAY BARN

DRIVE

MR. REDMON LUMBER YARD  
LUMBER PILE 18'

S. LIBERTY

N. LIBERTY

Scale of Feet. 0 50 100 150

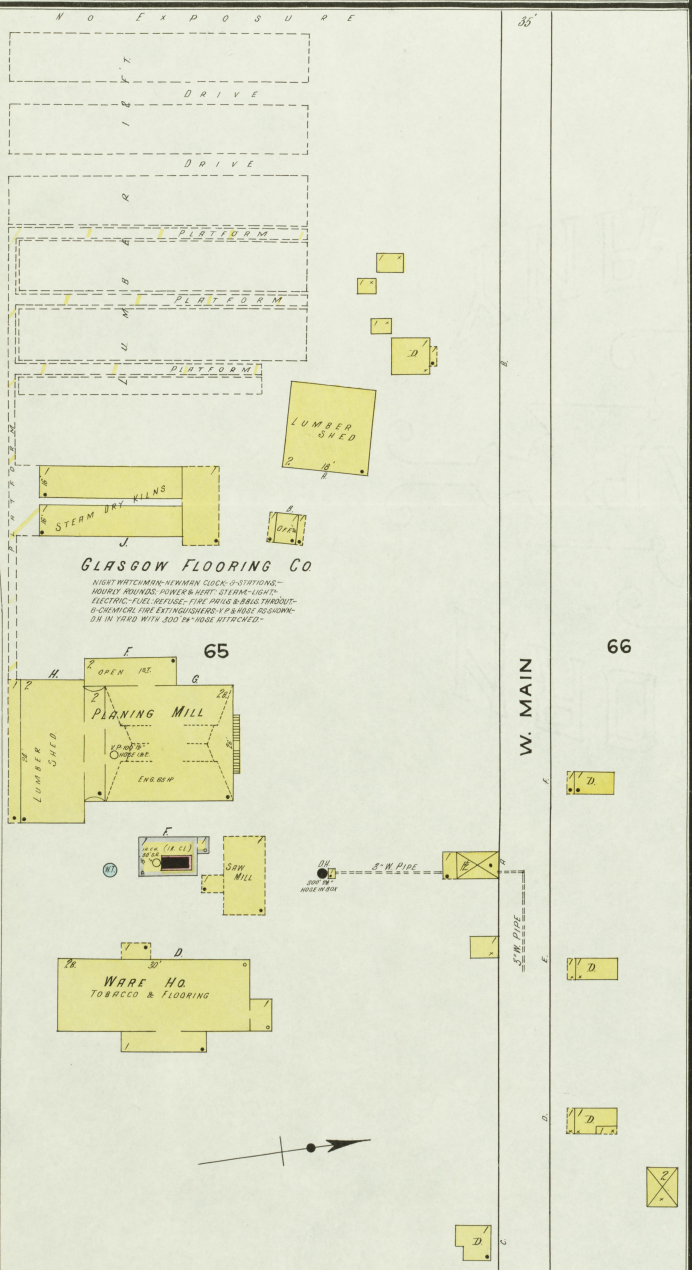
2

3



T. L. SAMPSON  
TOBACCO PRIZE BARN  
THIS BLDG. TO BE MOVED INTO TOWN

Located 1/8 Miles N.E. of Court Ho.



Located 1/4 Mile W of Court Ho.

