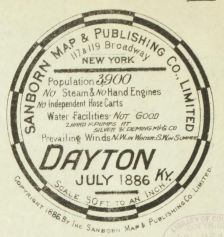


THE UNDERSIGNED HAS EXAMINED THE NEW MAP OF DAYTON BY THE SANBORN MAP & PUBLISHING CO. LIMITED OF NEW YORK, AND FINDS IT TO BE A COMPLETELY ACCURATE REPRESENTATION OF THE CITY AS IT IS AT THE PRESENT TIME.

R. B. MOORE

2 SHEETS



INDEX. STREETS.

Berkham	B	Second to Fifth	4
Berry Ave.	B	21-71	2
Boone	B	17-48	3
Clark	C	Second to Fifth	4
Clay	C	17-48	2
	C	50-55	3
Dayton Ave.	D	50-75	1
Fairfield Ave.	F	1-60	1
Fifth	F	1-60	2
Fourth	F	28-41	3
	F	48-56	2
	F	106-205	4
Jackson	J	Second to Fourth	3
Jefferson	J	Fourth to Fifth	1
Kenton	K	17-48	3
Main	M	17-48	3
	M	50-105	2
Second	S	20-118	3
Seventh	S	140-175	4
Sixth	S	1-48	2
	S	1-64	3
Third	T	40-145	2
	T	106-205	4

SPECIALS.

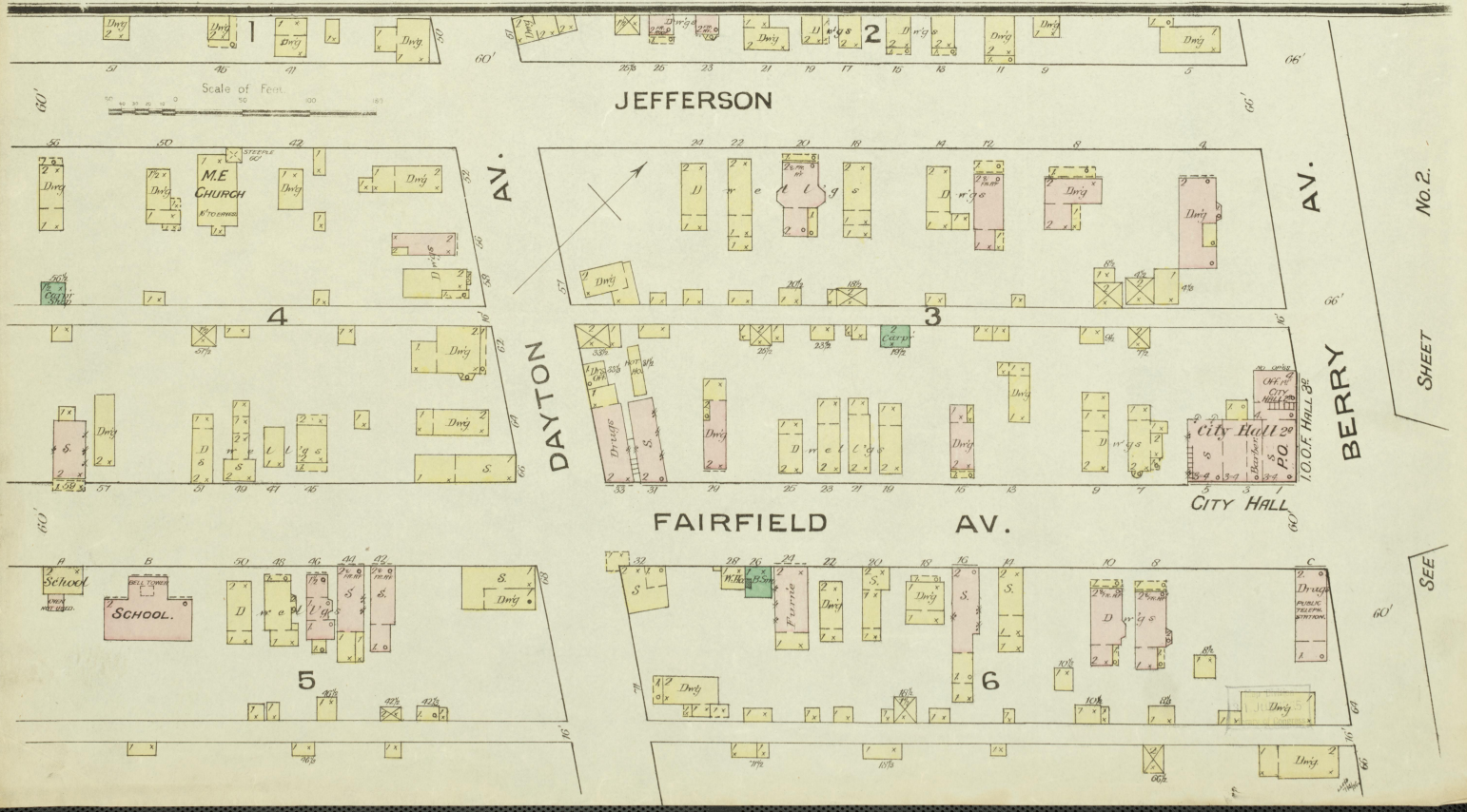
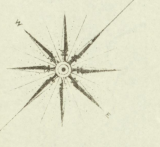
Baptist Church	B	1-60	1
Boke, J., Wagon Shop	B	1-60	2
Boke, J., Cordage Works	B	1-60	3
Catholic Church	C	1-60	1
City Hall	C	1-60	2
German Church	G	1-60	1
McClain, W. C., Coal Yard	M	1-60	2
Maddux, L. O., & Co., Distillery	M	1-60	3
Methodist Episc. Church	M	1-60	4
Newport & Dayton Street Car Stables	N	1-60	2
Schmidt & Friday, Distillery	S	1-60	2
Winchester Distilling Co.	W	1-60	4

• Indicates only one side of Street shown.



KEY

ST. FIRE	WELL 6 IN. AS ROOF
WATER	12 - - -
WATER	18 - - -
WATER	24 - - -
WATER	30 - - -
WATER	36 - - -
WATER	42 - - -
WATER	48 - - -
WATER	54 - - -
WATER	60 - - -
WATER	66 - - -
WATER	72 - - -
WATER	78 - - -
WATER	84 - - -
WATER	90 - - -
WATER	96 - - -
WATER	102 - - -
WATER	108 - - -
WATER	114 - - -
WATER	120 - - -
WATER	126 - - -
WATER	132 - - -
WATER	138 - - -
WATER	144 - - -
WATER	150 - - -
WATER	156 - - -
WATER	162 - - -
WATER	168 - - -
WATER	174 - - -
WATER	180 - - -
WATER	186 - - -
WATER	192 - - -
WATER	198 - - -
WATER	204 - - -
WATER	210 - - -
WATER	216 - - -
WATER	222 - - -
WATER	228 - - -
WATER	234 - - -
WATER	240 - - -
WATER	246 - - -
WATER	252 - - -
WATER	258 - - -
WATER	264 - - -
WATER	270 - - -
WATER	276 - - -
WATER	282 - - -
WATER	288 - - -
WATER	294 - - -
WATER	300 - - -
WATER	306 - - -
WATER	312 - - -
WATER	318 - - -
WATER	324 - - -
WATER	330 - - -
WATER	336 - - -
WATER	342 - - -
WATER	348 - - -
WATER	354 - - -
WATER	360 - - -
WATER	366 - - -
WATER	372 - - -
WATER	378 - - -
WATER	384 - - -
WATER	390 - - -
WATER	396 - - -
WATER	402 - - -
WATER	408 - - -
WATER	414 - - -
WATER	420 - - -
WATER	426 - - -
WATER	432 - - -
WATER	438 - - -
WATER	444 - - -
WATER	450 - - -
WATER	456 - - -
WATER	462 - - -
WATER	468 - - -
WATER	474 - - -
WATER	480 - - -
WATER	486 - - -
WATER	492 - - -
WATER	498 - - -
WATER	504 - - -
WATER	510 - - -
WATER	516 - - -
WATER	522 - - -
WATER	528 - - -
WATER	534 - - -
WATER	540 - - -
WATER	546 - - -
WATER	552 - - -
WATER	558 - - -
WATER	564 - - -
WATER	570 - - -
WATER	576 - - -
WATER	582 - - -
WATER	588 - - -
WATER	594 - - -
WATER	600 - - -
WATER	606 - - -
WATER	612 - - -
WATER	618 - - -
WATER	624 - - -
WATER	630 - - -
WATER	636 - - -
WATER	642 - - -
WATER	648 - - -
WATER	654 - - -
WATER	660 - - -
WATER	666 - - -
WATER	672 - - -
WATER	678 - - -
WATER	684 - - -
WATER	690 - - -
WATER	696 - - -
WATER	702 - - -
WATER	708 - - -
WATER	714 - - -
WATER	720 - - -
WATER	726 - - -
WATER	732 - - -
WATER	738 - - -
WATER	744 - - -
WATER	750 - - -
WATER	756 - - -
WATER	762 - - -
WATER	768 - - -
WATER	774 - - -
WATER	780 - - -
WATER	786 - - -
WATER	792 - - -
WATER	798 - - -
WATER	804 - - -
WATER	810 - - -
WATER	816 - - -
WATER	822 - - -
WATER	828 - - -
WATER	834 - - -
WATER	840 - - -
WATER	846 - - -
WATER	852 - - -
WATER	858 - - -
WATER	864 - - -
WATER	870 - - -
WATER	876 - - -
WATER	882 - - -
WATER	888 - - -
WATER	894 - - -
WATER	900 - - -
WATER	906 - - -
WATER	912 - - -
WATER	918 - - -
WATER	924 - - -
WATER	930 - - -
WATER	936 - - -
WATER	942 - - -
WATER	948 - - -
WATER	954 - - -
WATER	960 - - -
WATER	966 - - -
WATER	972 - - -
WATER	978 - - -
WATER	984 - - -
WATER	990 - - -
WATER	996 - - -
WATER	1002 - - -



No. 2. SHEET

SEE

JULY 1886
DAYTON
KY.



14

13

7

8

9

10

11

12

15

16

17

18

19

20

21

22

23

24

25

26

27

28

29

30

31

32

33

34

35

36

37

38

39

40

41

42

43

44

45

46

47

48

49

50

51

52

53

54

55

56

57

58

59

60

61

62

63

64

65

66

67

68

69

70

71

72

73

74

75

76

77

78

79

80

81

82

83

84

85

86

87

88

89

90

91

92

93

94

95

96

97

98

99

100

101

102

103

104

105

106

107

108

109

110

111

112

113

114

115

116

117

118

119

120

121

122

123

124

125

126

127

128

129

130

131

132

133

134

135

136

137

138

139

140

141

142

143

144

145

146

147

148

149

150

151

152

153

154

155

156

157

158

159

160

161

162

163

164

165

166

167

168

169

170

171

172

173

174

175

176

177

178

179

180

181

182

183

184

185

186

187

188

189

190

191

192

193

194

195

196

197

198

199

200

201

202

203

204

205

206

207

208

209

210

211

212

213

214

215

216

217

218

219

220

221

222

223

224

225

226

227

228

229

230

231

232

233

234

235

236

237

238

239

240

241

242

243

244

245

246

247

248

249

250

251

252

253

254

255

256

257

258

259

260

261

262

263

264

265

266

267

268

269

270

271

272

273

274

275

276

277

278

279

280

281

282

283

284

285

286

287

288

289

290

291

292

293

294

295

296

297

298

299

300

301

302

303

304

305

306

307

308

309

310

311

312

313

314

315

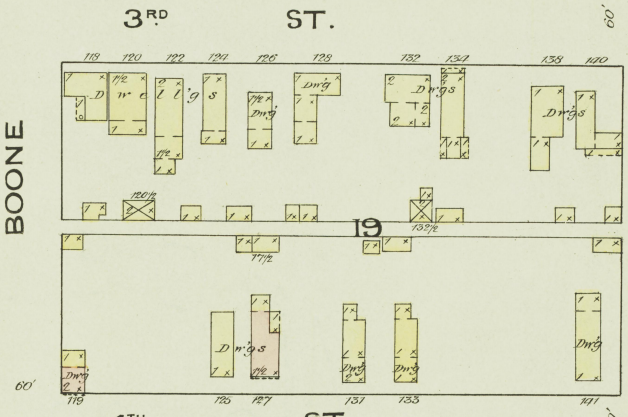
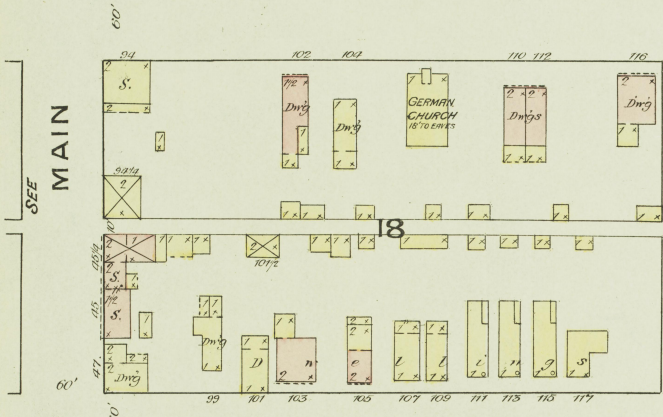
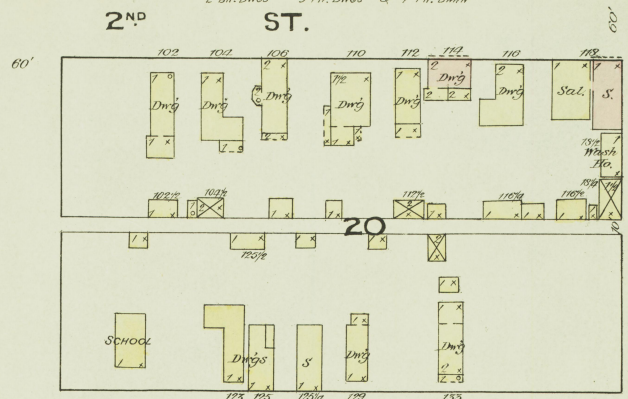
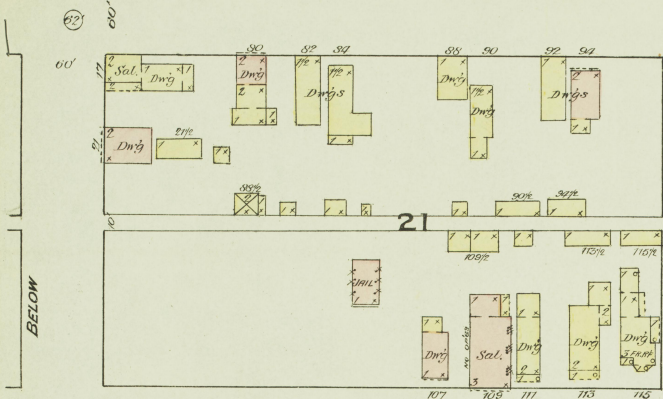
316

2 DR. DWGS 12 FR. DWGS & 2 FR. BARR

2 BR. DWGS 9 FR. DWGS & 1 FR. BARR

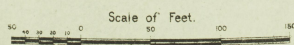
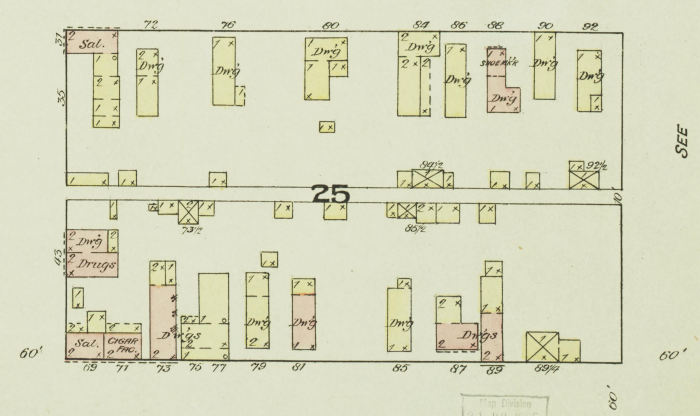
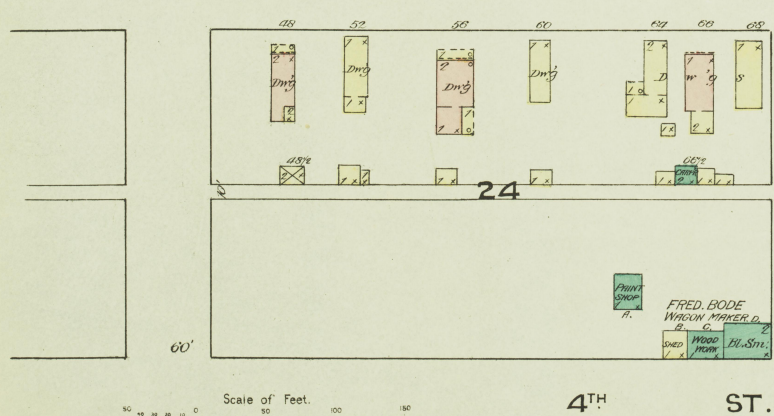
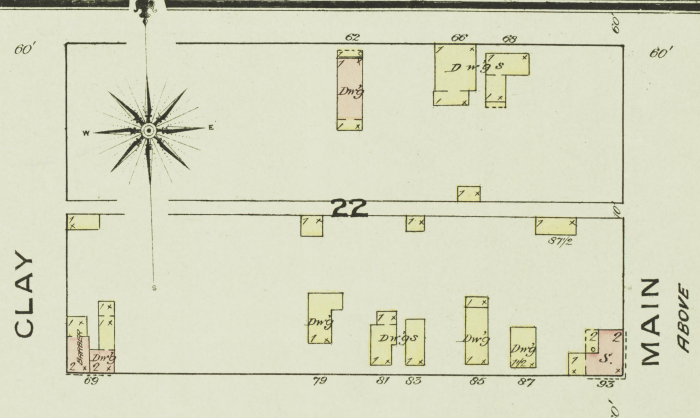
3

JULY 1886
DAYTON
KY.



SEE SHEET NO. 2

4TH ST.



FRED BODE
WAGON MAKER
WOOD
BL. SM.

SEE

SHEET

NO. 2

The Division
31 JUL 1886
Library of Congress

JULY 1886
DAYTON
KY.

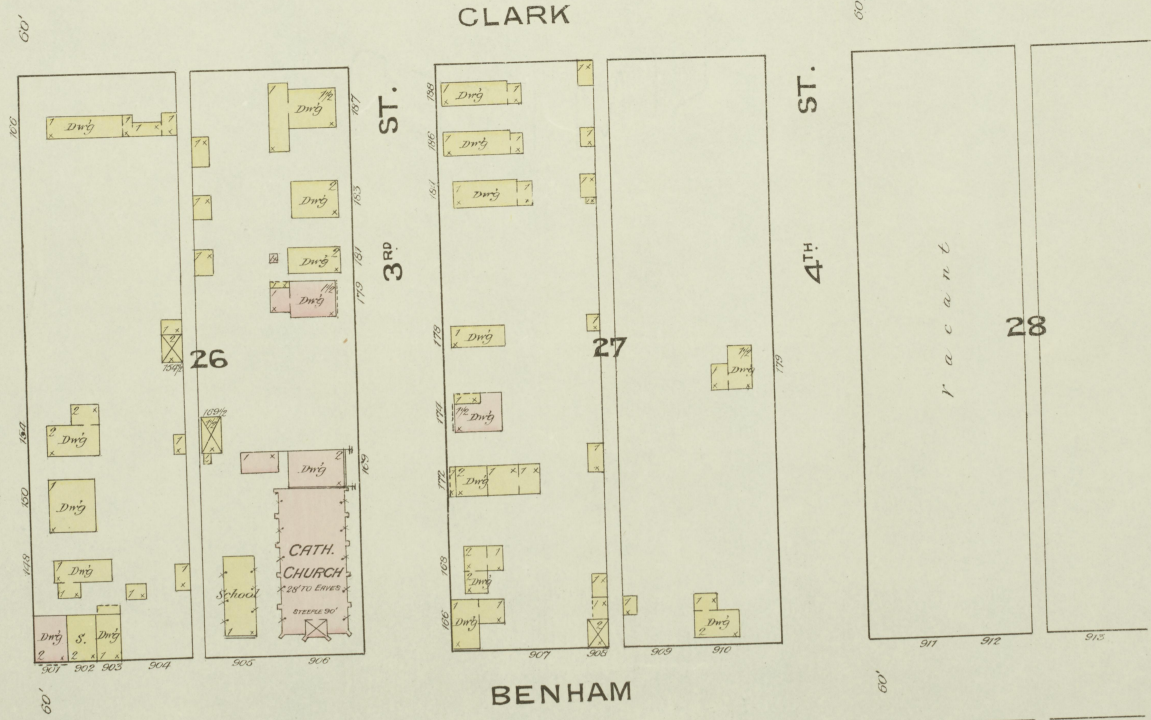
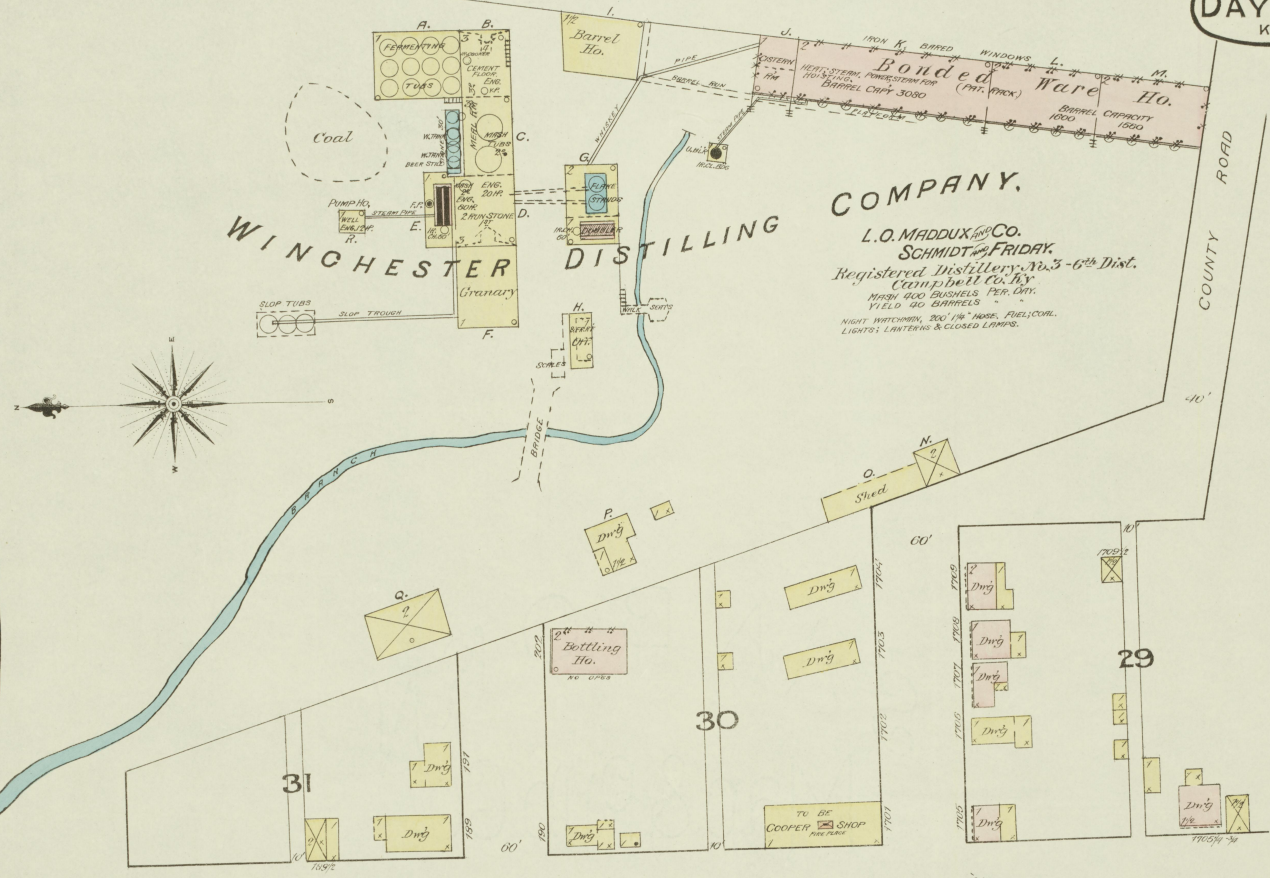
N o e x p o s u r e

River
Ohio

WINCHESTER DISTILLING COMPANY.

L.O. MADDUX, ^{and} CO.
SCHMIDT & FRIDAY.
Registered Distillery No. 3-16th Dist.
Campbell Co. Ky.
MASH 400 BUSHELS PER DAY.
YIELD 40 BARRELS.
NIGHT WATCHMAN, 200 Yds. FIRE, CIVIL
LIGHTS, LANTERNS & CLOSED LAMPS.

Bonded Ware Ho.
IRON KE BARED WINDOWS
HEATS STEAM PUMPS FOR
BARREL CAPT. 3000
BARREL CAPACITY 1000
BARREL CAPACITY 1000



Scale of Feet.
0 50 100 150

The Dublin
31 JUL 1885
Library of Congress