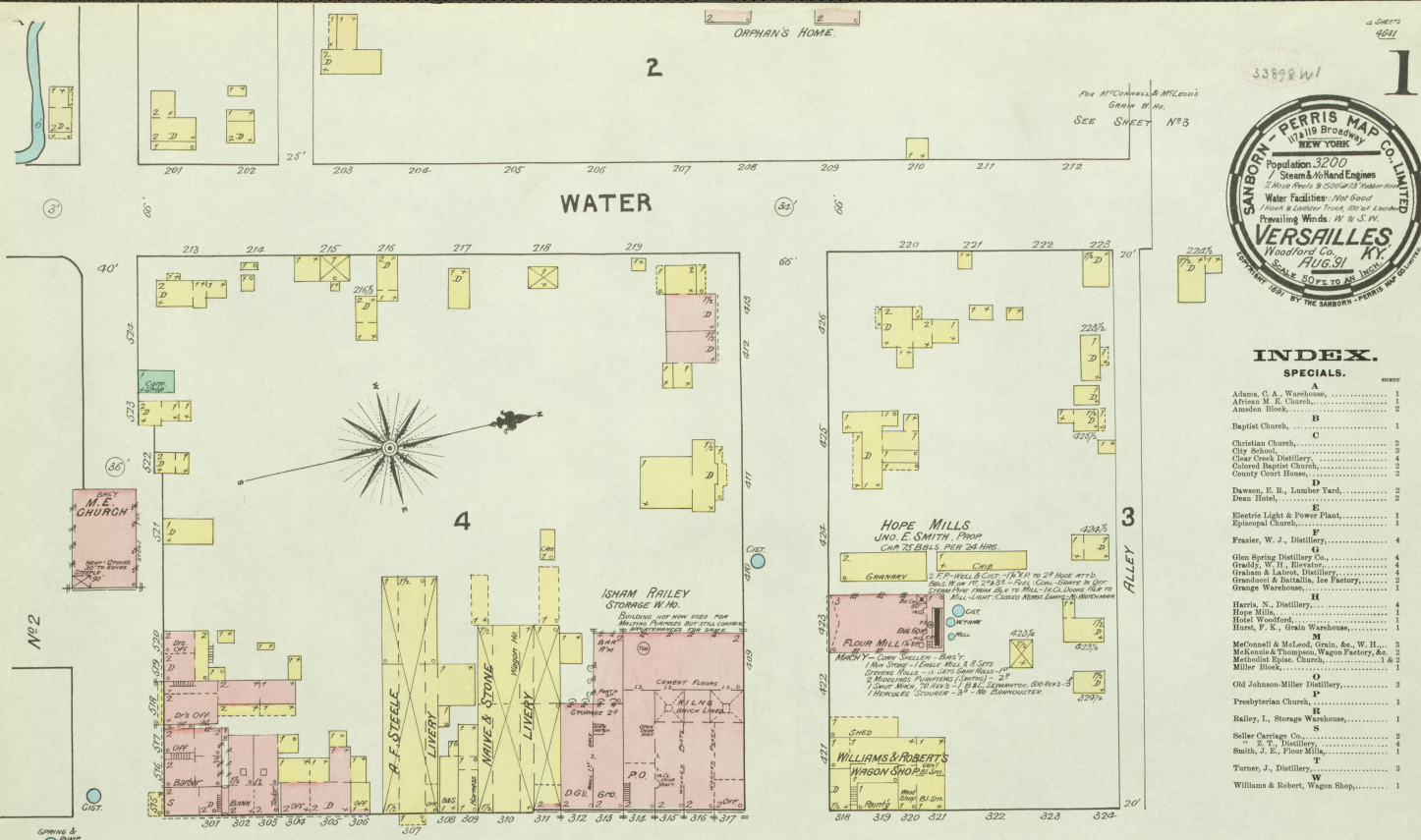




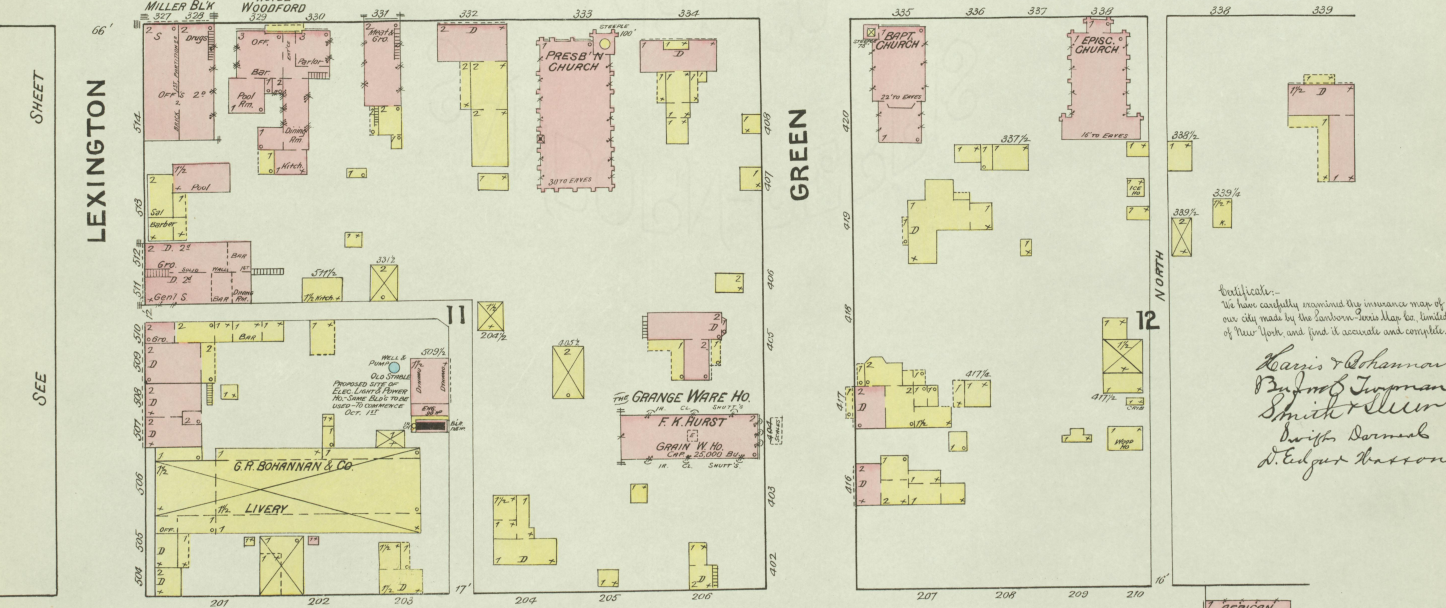
WATER

MAIN



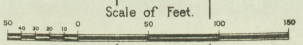
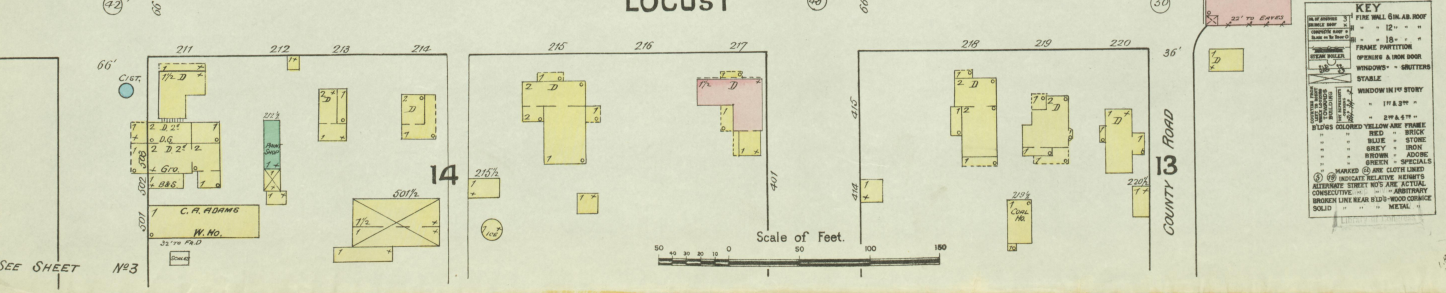
INDEX.

Table listing various locations and their corresponding sheet numbers. Includes entries like Adams, C. A. Warehouse, Baptist Church, and various distilleries.



Vertical text: "We have carefully examined the numerous maps of our City made by the Sanborn-Vermillion Co. for the purpose of their City, and find it accurate and complete." Signed by Lewis & Bohannan, James Smith & Miller, David Darnall, and E. Edgar Basson.

LOCUST



KEY: Legend for symbols used on the map, including FIRE MAIL SIGN, ROOF, BRICK, FRAME PARTITION, and various window and door types.







