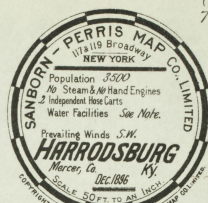
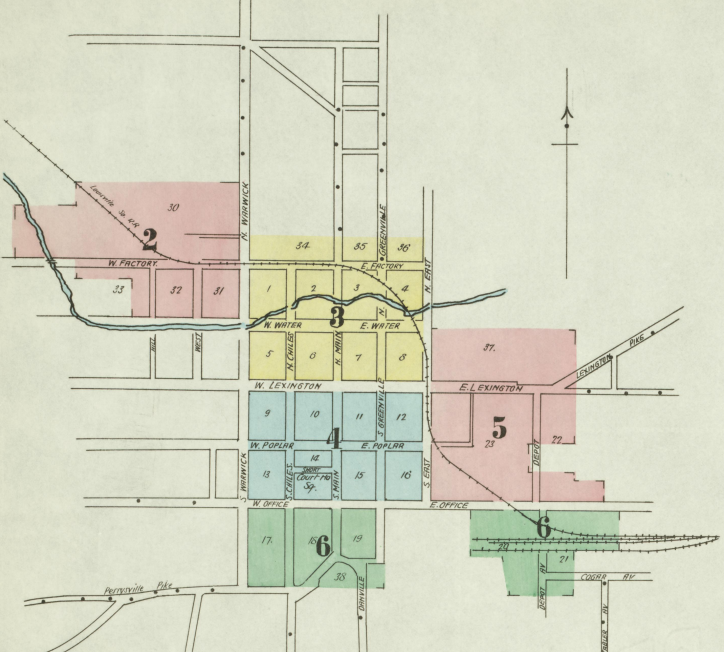


71088  
1876

**-Note-**  
Water Facilities: TRUNK PIPE SYSTEM  
UNDER PIPING UNDER RIVERS, BRIDGES,  
STATIONS, IN ALLEYS, 1" BORNE SOLID  
FROM E. CO. OF WAREHOUSES, WATER FROM  
WITH CAP OF ABOUT 150 GAL. QUARTS PER  
24 HOURS OF 2" WATER, 12 BARRELS PER  
CUBIC FEET OF PIPING TO LET BY  
COST  
Fire Dept: 2 1/2 Gal. of 15 NEW  
ONE BARREL PER SECOND, TRUCK 25  
LONDONER COMPANY NO. 1 CHEMICAL  
ORDER KEEP AT DISTILLERY IN W. FERRY  
ST.



(1876)  
7 Streets.



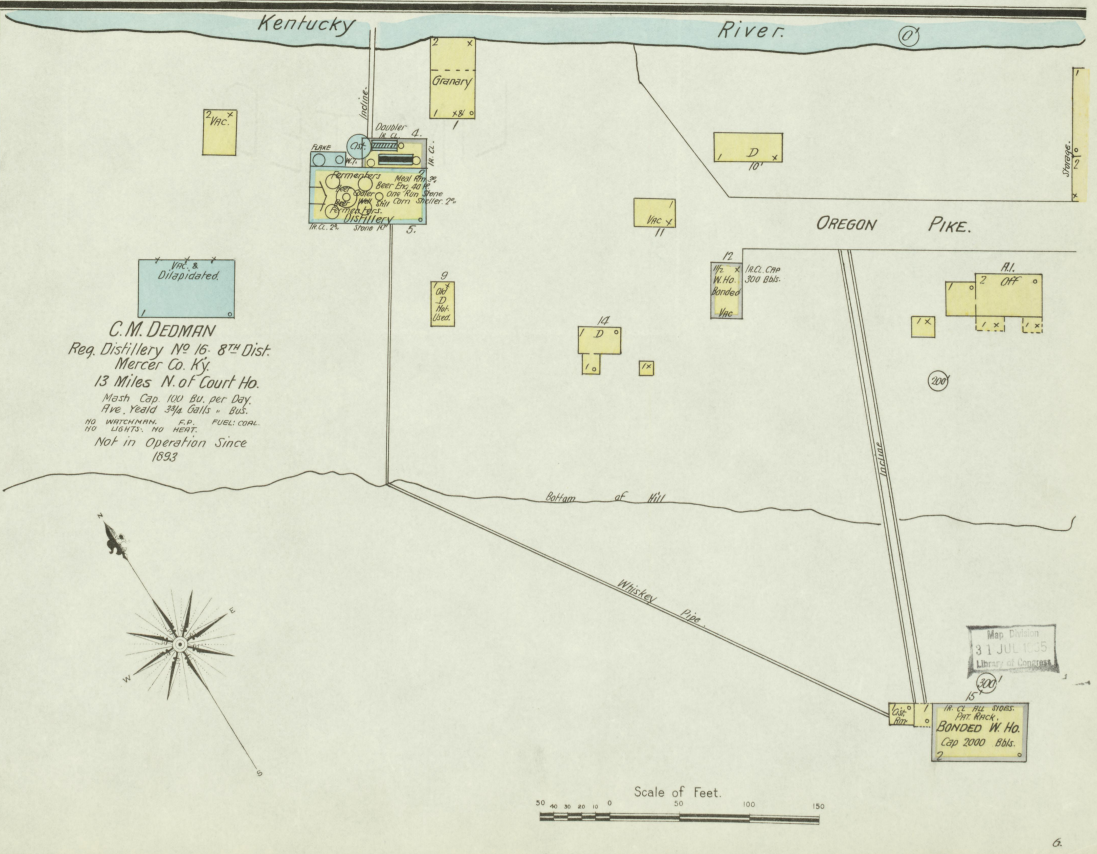
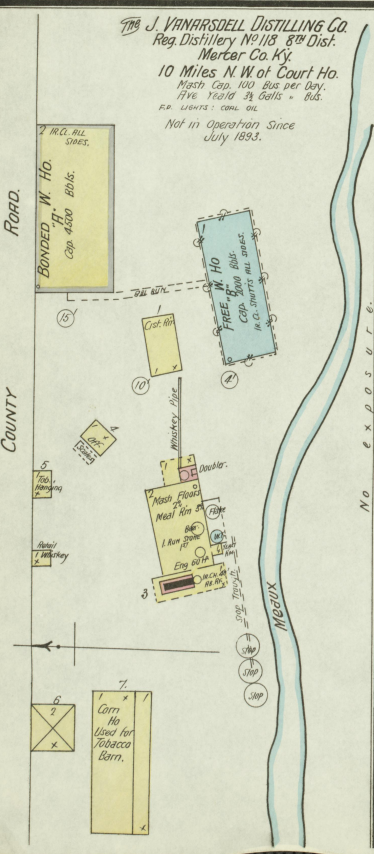
**KEY**

1	FIRE WALL SIX IN. AIR ROOF
2	FRAME PARTITION
3	FRAME PARTITION
4	BREKING & NON-CODE
5	WINDOWS - SHUTTERS
6	STABLE
7	WINDOW HALF STORY
8	11 & 3"
9	2 1/4 & 4"
10	WILDS COLORED
11	YELLOW AND FRAME
12	RED BRICK
13	BLUE STONE
14	BREY IRON
15	BROWN IRON
16	GREEN SPECIALS
17	MARKED IN RED
18	INDICATE RELATIVE HEIGHTS
19	ADVANCE STREET WITS ARE ACTUAL
20	CONTOUR LINE NEAR RDS
21	WOOD-CORNER
22	SOLID METAL

# INDEX.

STREETS.		SPECIALS.	
O	Cane Run Pike..... 7	A	African M. E. Church..... 2
O	Chiles, N.,..... 2-37 3	B	Baptist Church..... 6
O	..... 4-40 4	B	Beaumont College..... 6
O	..... 50-62 6	C	Bobson, G., Carriage Factory..... 6
O	..... 1001-1010, arbitrary 6	C	Bond, O. E., Brick Yard..... 3
O	..... 501-519, arbitrary 6	C	Catholic Church..... 6
O	County Road..... 1	C	Christian Church..... 1
D	Danville..... 301-305, arbitrary 6		
D	..... & Pleasant Hill Pike..... 7		
D	Depot..... 1501-1515, arbitrary 6		
D	..... 1001-1015..... 6		
E	East, N.,..... 1501-1509, arbitrary 3		
E	..... 12-48 4		
E	..... 28-47 5		
E	..... 1601-1608, arbitrary 5		
F	Factory, E.,..... 4-18 3		
F	..... 801-813, arbitrary 3		
F	..... 701-710, arbitrary 2		
F	..... 801-806, " 3		
G	Greenville, N.,..... 1-38 3		
G	..... 4-49 4		
G	..... 1401-1406, arbitrary 6		
H	Hill..... 401-416, arbitrary 2		
L	Lexington, E.,..... 1-34 3		
L	..... 5-33 4		
L	..... 701-725, arbitrary 5		
L	..... 1-21 3		
L	..... 10-32 6		
M	Main, N.,..... 1-44 3		
M	..... 1-67 4		
M	..... 1501-1508, arbitrary 6		
O	Office, E.,..... 3-47 4		
O	..... 48-59 6		
O	..... 49-107 3		
O	..... 70-104 4		
O	..... 4-38 6		
O	..... 501-519, arbitrary 6		
O	Oregon Pike..... 1		
P	Poplar, E.,..... 1-32 4		
P	..... 701-707, arbitrary 5		
P	..... 6-37 4		
S	Short..... 5-27 4		
W	Warwick, N.,..... 1501-1713, arbitrary 6		
W	..... 1901-1817, " 3		
W	..... 1501-1510, " 6		
W	..... 1601-1610, " 3		
W	Water, E.,..... 1-24 4		
W	..... 601-614, arbitrary 1-30 3		
W	..... 701-709, " 2		
W	West, N.,..... 301-312, " 6		
City Mills..... 5	Jail..... 6	Dezman, C. M., Distillery..... 4	Democrat Printing..... 1
Cogar, D. S., Coal Yard & Grain W. H., 6	Commercial Hotel..... 2	Dowling Bros., Distillery..... 7	Episcopal Church..... 4
County Court House..... 4	Jail..... 6	Deshman, C. M., Distillery..... 4	Democrat Printing..... 1
Jail..... 6	Deshman, C. M., Distillery..... 4	Dowling Bros., Distillery..... 7	Episcopal Church..... 4
Dezman, C. M., Distillery..... 4	Democrat Printing..... 1	Dowling Bros., Distillery..... 7	Episcopal Church..... 4
First Presbyterian Church, E. Poplar St., 4	Harrodsburg Academy..... 6	Electric Light & Pow. Co., 2	Boiler Mills..... 2
Hugely, J. A., Distillery..... 2	Lofan, John, Planing Mill & Linn. Yard, 2	L. S. R. R. Depot & Freight House..... 6	Marimon, T. S., Flour Mill..... 5
Mercer Houses..... 3	Methodist Episc. Church..... 4	Mitchell, M. T., Distillery..... 7	Old Fort Spring Distillery..... 2
Opera House..... 4	Renaker, Gilman & Good, Slaughter Ho., 6	Thompson, J. B., Distillery..... 2	Vanarsdell Bro., Lumber Yd & Pl. Mill, 6
Vanarsdell Bro., Lumber Yd & Pl. Mill, 6	J., Distilling Co., 1		

\* Indicates only one side of Street shown.



Scale of Feet. 0 20 40 60 80 100 120 140 160

N. WARWICK

N. WEST

HILL

W. FACTORY

W. WATER

W. FACTORY

John Lofan's Off.

Lumber Shed

JOHN LOFAN  
Planning Mill & Lumber Yard  
Site of Plant of Lumber in April 1900 600 FT.  
NO. INTERESTED IN HARRODSBURG DISTRICT  
CONCERNING LUMBER MILL. LUMBER PLANT  
IN OFF. WORK IN MILL. NEARBY PLACE  
IN OFF. WORK IN MILL. NEARBY PLACE  
WELL NO. FOUR ADJ.

Planning Mill & Lumber Yard  
No. 4  
No. 5  
No. 6  
No. 7  
No. 8  
No. 9  
No. 10  
No. 11  
No. 12  
No. 13  
No. 14  
No. 15  
No. 16  
No. 17  
No. 18  
No. 19  
No. 20  
No. 21  
No. 22  
No. 23  
No. 24  
No. 25  
No. 26  
No. 27  
No. 28  
No. 29  
No. 30  
No. 31  
No. 32  
No. 33

HARRDSBURG ELEC. POWER PLANT CO.  
PLANT WILL GENERATE POWER FOR THE CITY OF HARRODSBURG  
AND NEARBY PLACES. THE PLANT WILL BE BUILT ON THE  
SOUTH SIDE OF THE RIVER, NEAR THE MILL. THE PLANT  
WILL BE EQUIPPED WITH THE LATEST IMPROVED MACHINERY  
AND WILL BE CAPABLE OF GENERATING 1000 KW. OF POWER  
PER HOUR. THE PLANT WILL BE BUILT ON THE SOUTH SIDE  
OF THE RIVER, NEAR THE MILL. THE PLANT WILL BE  
EQUIPPED WITH THE LATEST IMPROVED MACHINERY AND  
WILL BE CAPABLE OF GENERATING 1000 KW. OF POWER  
PER HOUR.

Platform

BONDED W. Ho. No. 93  
Pat. Racks Cap. 17500 Bbls.

Not in Operation since 1894  
J. B. THOMPSON  
Old Fort Spring Distillery  
Reg. Distillery No. 63. 8th Dist. Mercer Co. Ky.  
RIGBY COOK 1000 BU 5000 WH. 5IVE YEARS & ONLY  
PURE M.O. & NIGHT WATCHMAN. AMERICAN BLEND.  
CLOCK. & CRYSTAL. MOUNTAIN. RAINBOW. WATER. PRIMA  
CROWN. NO. 1. NO. 2. NO. 3. NO. 4. NO. 5. NO. 6. NO. 7.  
CHEMICAL. FIRE. ENG. LUMBER. SODA. LANTERNS. HEAT.  
STOVE. IN. 1892. 64 & 50.

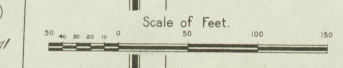
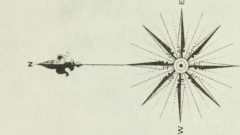
BONDED W. Ho. No. 2  
Pat. Racks Cap. 7500 Bbls.

BONDED W. Ho. No. 1  
Cap. 2000 Bbls.

Boil. Room  
Dist. Room  
Brewing Room

COLORED BAPTIST CHURCH  
18. 1/2 acres

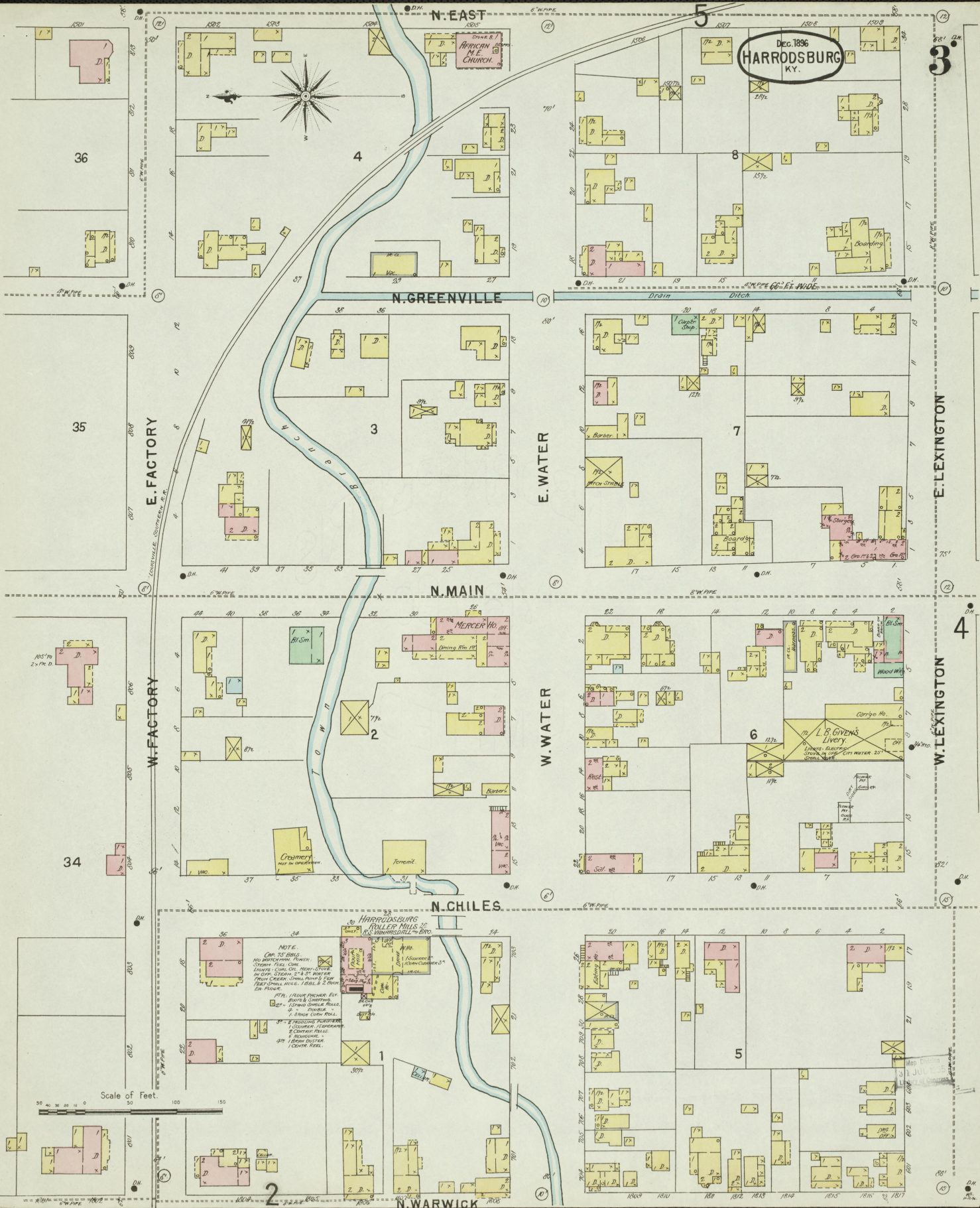
Cattle Pen  
Cattle Pen  
Cattle Pen  
Cattle Pen



Map Drawn  
31 JUL 1913  
Library of Congress

Dec. 1896  
**HARRDSBURG**  
KY.

3



N. EAST

N. GREENVILLE

N. MAIN

N. CHILES

N. WARWICK

E. WATER

W. WATER

E. FACTORY

W. FACTORY

E. LEXINGTON

W. LEXINGTON

4

Scale of Feet  
0 50 100 150

**MERCER No. 18**  
Dining Room  
Barber  
Cremerery  
Ferment

**L. B. GIVENS**  
LIVERY  
Stables, Race  
Stables, City Water, 22'

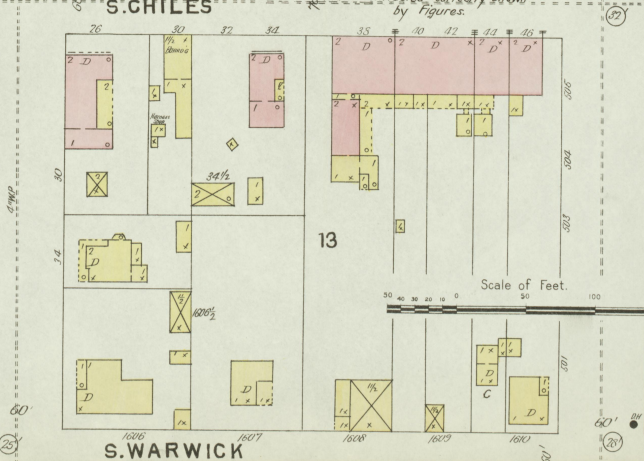
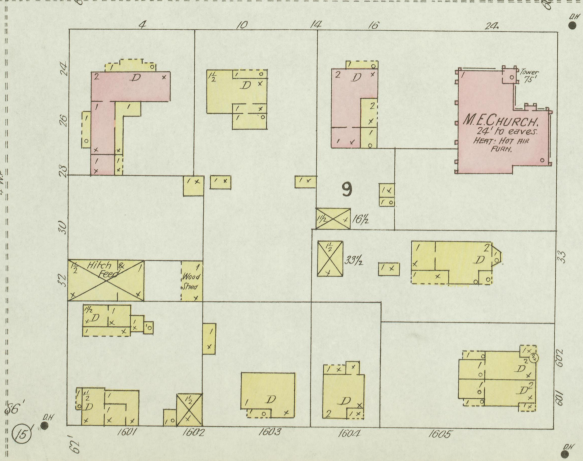
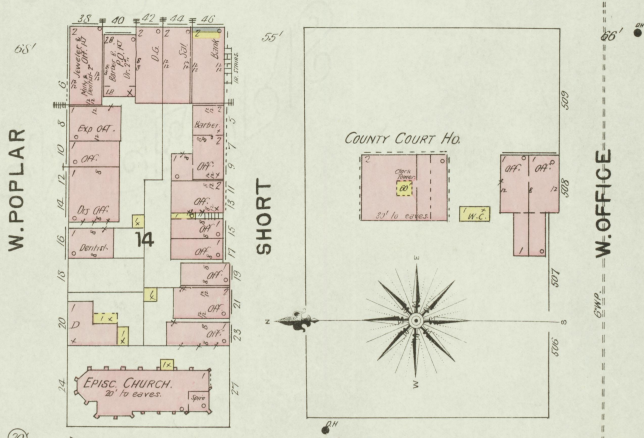
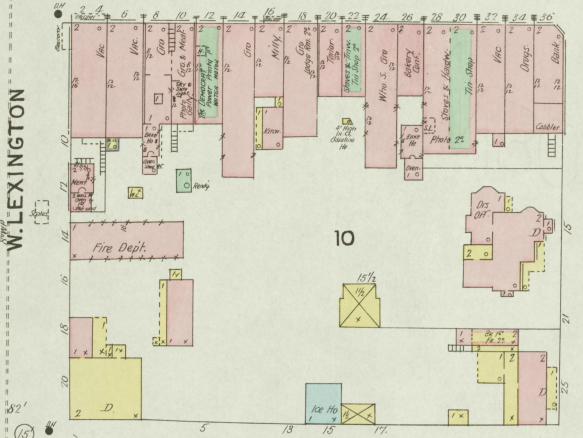
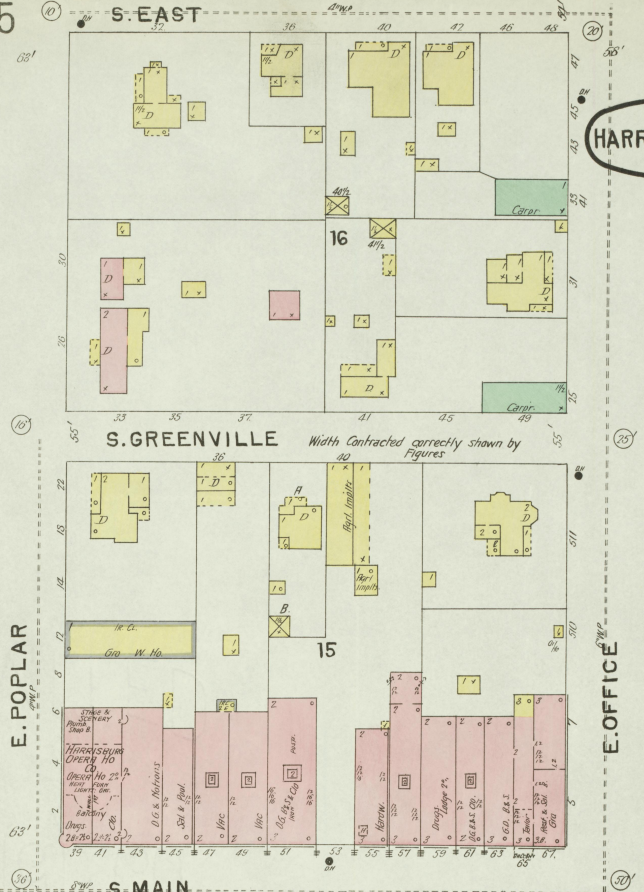
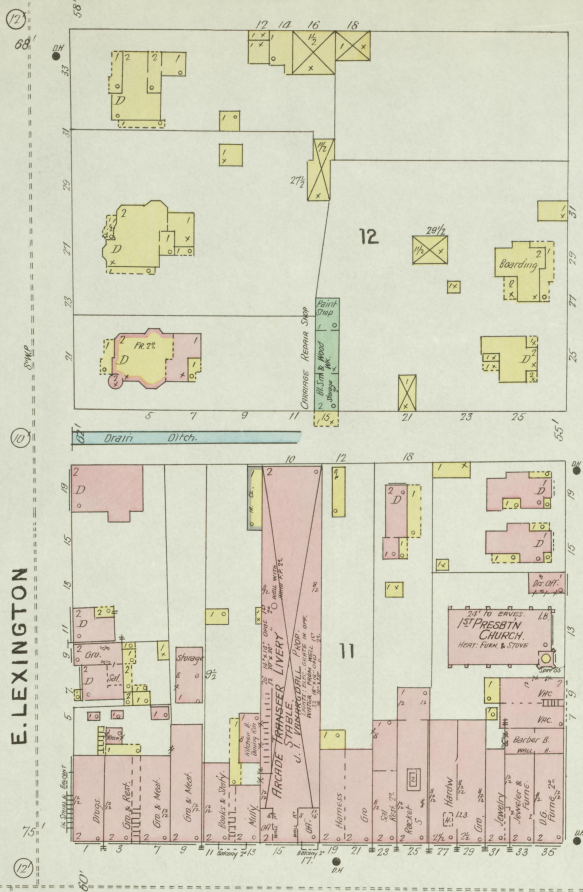
**HARRDSBURG ROLLER MILLS**  
NOTE:  
Cap 50 HPS.  
No. 1 WATERING POWER.  
STEAM TRAIL, CAP.  
LIGHTS, CURS, OIL, FRESH STEAM.  
IN CASE OF FIRE, 2 1/2 H. WATER.  
FRONT CRUIER, CURS, PAINT, 2 CURS.  
PART STEAM, WHEEL, 2 H. PAINT  
2 H. POWER.

NOTE: 1/2 H. POWER, BY  
ROCK & CURRIER.  
2 H. STEAM TRAIL, ROAD.  
2 H. STEAM TRAIL, ROAD.  
2 H. STEAM TRAIL, ROAD.  
2 H. STEAM TRAIL, ROAD.  
2 H. STEAM TRAIL, ROAD.

ASST. M.  
2 - PC. D.

D.H.

D.H.

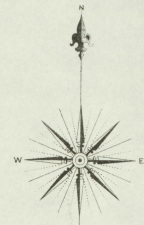


Dec. 1896  
HARRDSBURG  
KY.

5

37

3



E. LEXINGTON

4  
S. EAST

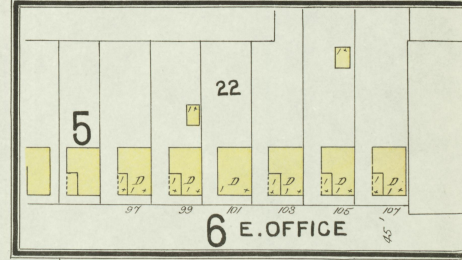
DEPOT

23

E. POPLAR ST.

4

Scale of Feet.  
0 50 100 150



CITY MILLS.  
T. S. MARION, Prop'r.  
CAPACITY 40 BALS AND 24 BLS AN HOUR  
POWER STEAM ENGINE CONVEYERS  
COMBLES FLOUR STOVE - WIND PUMP  
ELEVATOR AND FEEDER  
WATER WHEEL  
33 HORSE POWER

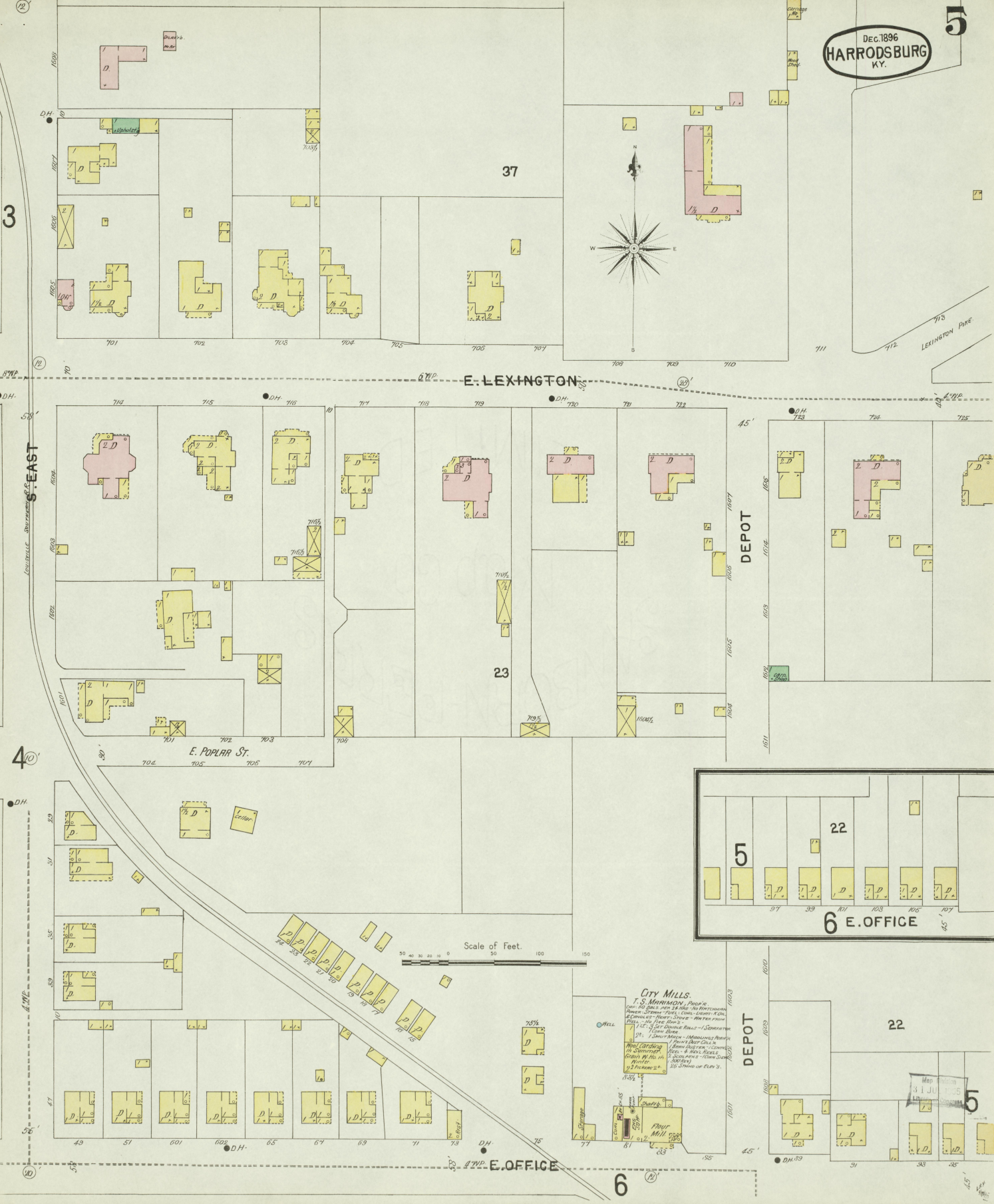
DEPOT

22

6

E. OFFICE

5



S. WARWICK

S. GREENVILLE

S. CHILES

S. MAIN

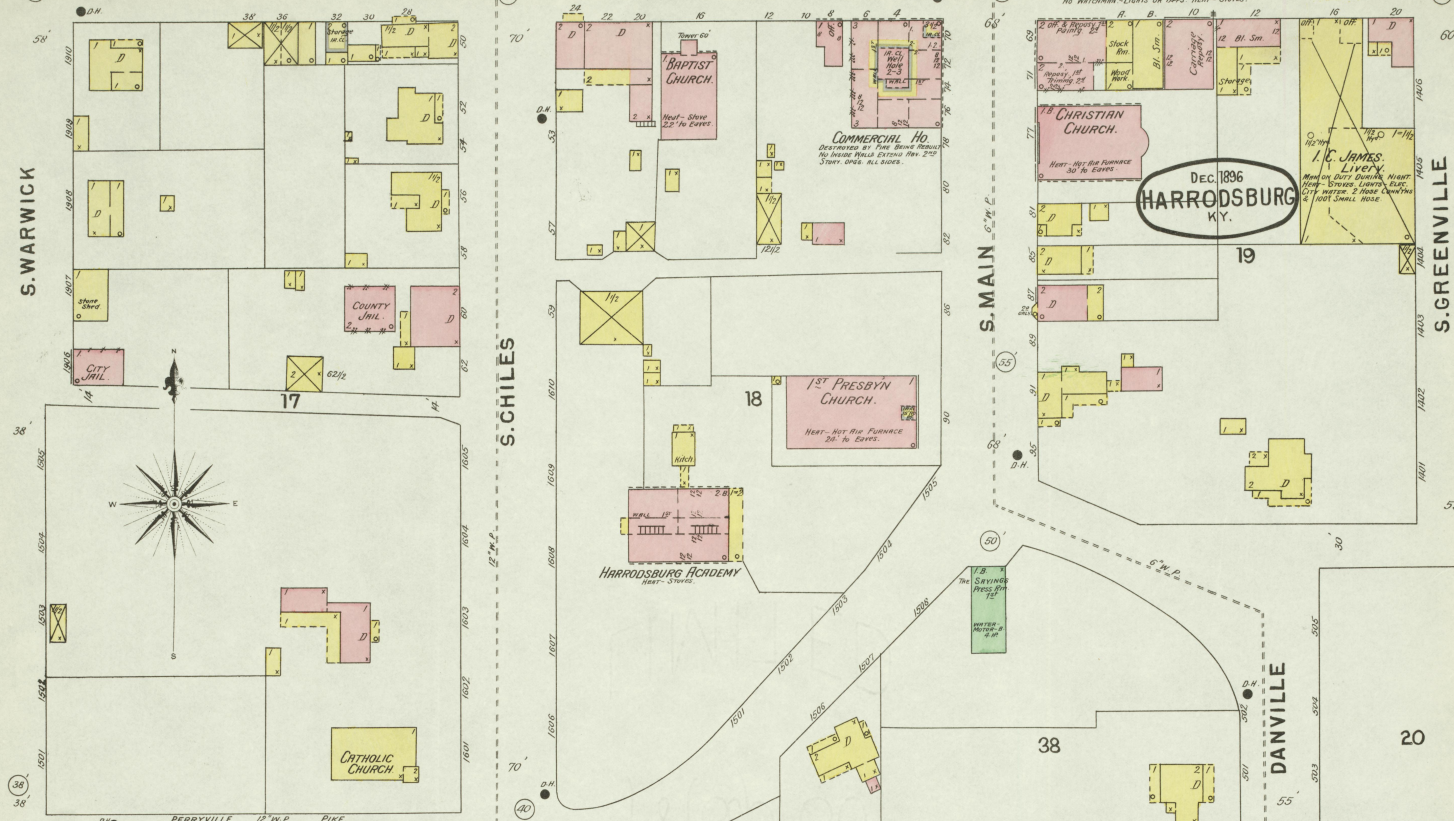
DANVILLE

W. OFFICE

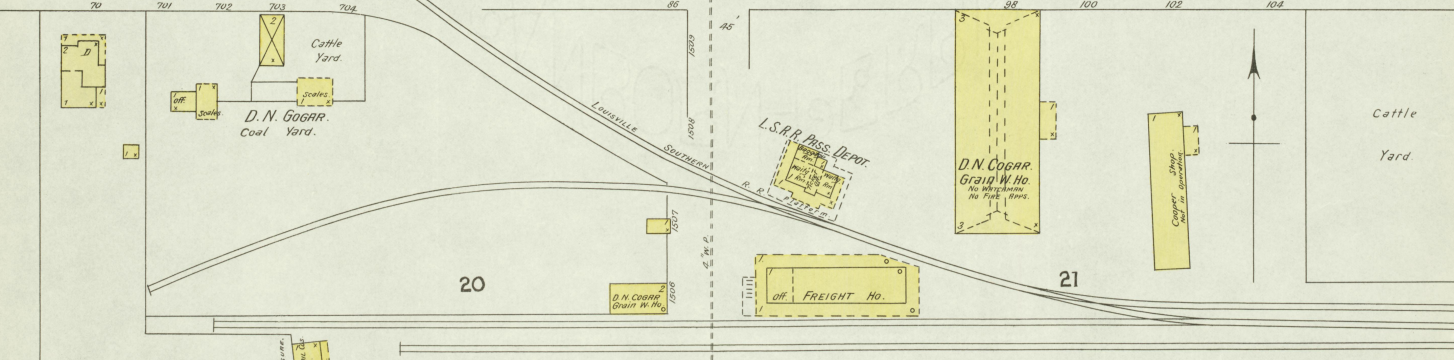
E. OFFICE

Geo. Bohon, Carriage Mfg. No. Invention Livery on Stock Horse Shows

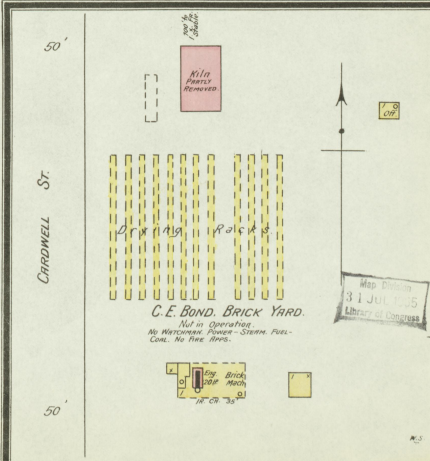
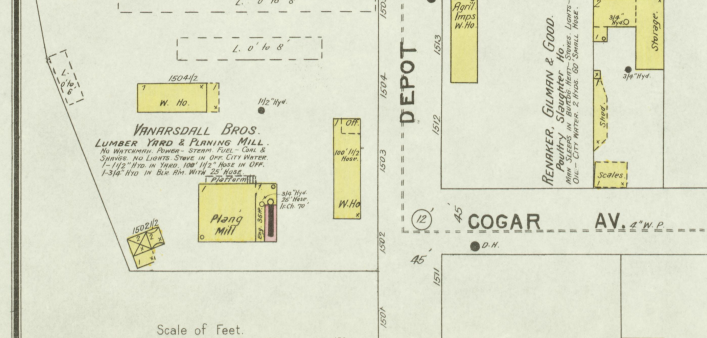
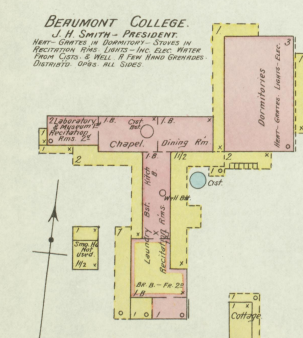
DEC 1896 HARRODSBURG KY.



E. OFFICE



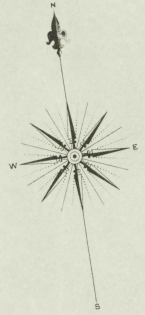
About 1/2 Mile S. of COURT HO.



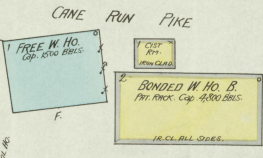
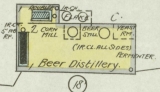
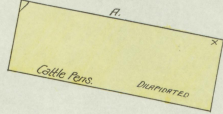
Scale of Feet. 0 50 100 150

Map drawn 31 JUL 1899 Library of Congress

DEC. 1896  
HARRODSBURG  
KY.



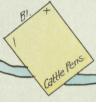
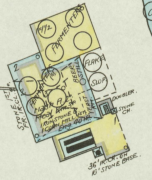
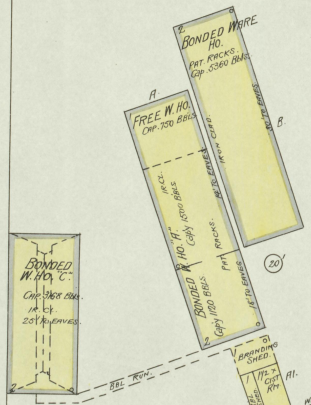
J. A. HUGUELY  
REGIS. DISTILLERY N<sup>o</sup> 6, 8<sup>th</sup> DISTRICT  
MERCER CO. KY.  
WASH. 84 BUSH. PER DAY.  
YIELD 870 GALL. PER DAY.  
NOT IN OPERATION SINCE 1892.



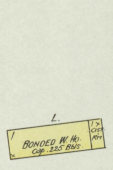
4 MILES E. OF HARRODSBURG COURT HO.

5 MILES E. OF HARRODSBURG COURT HO.

DOWLING BROS.  
REGIS. DISTILLERY N<sup>o</sup> 148, 8<sup>th</sup> DISTRICT  
MERCER CO. KY.  
WASH. 84 BUSH. PER DAY.  
YIELD 870 GALL. PER DAY.  
FEEL. COOL. NO. MATCHWHIN. NO. HOSE.  
NOT IN OPERATION SINCE  
SPRING 1895.



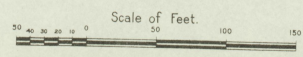
M. T. MITCHELL  
REGIS. DISTILLERY N<sup>o</sup> 8, 8<sup>th</sup> DIST.  
MERCER CO. KY.



NO EXPOSURE

NO EXPOSURE

CANE RUN PIKE



Map drawn  
31 JUL 1895  
Library of Congress