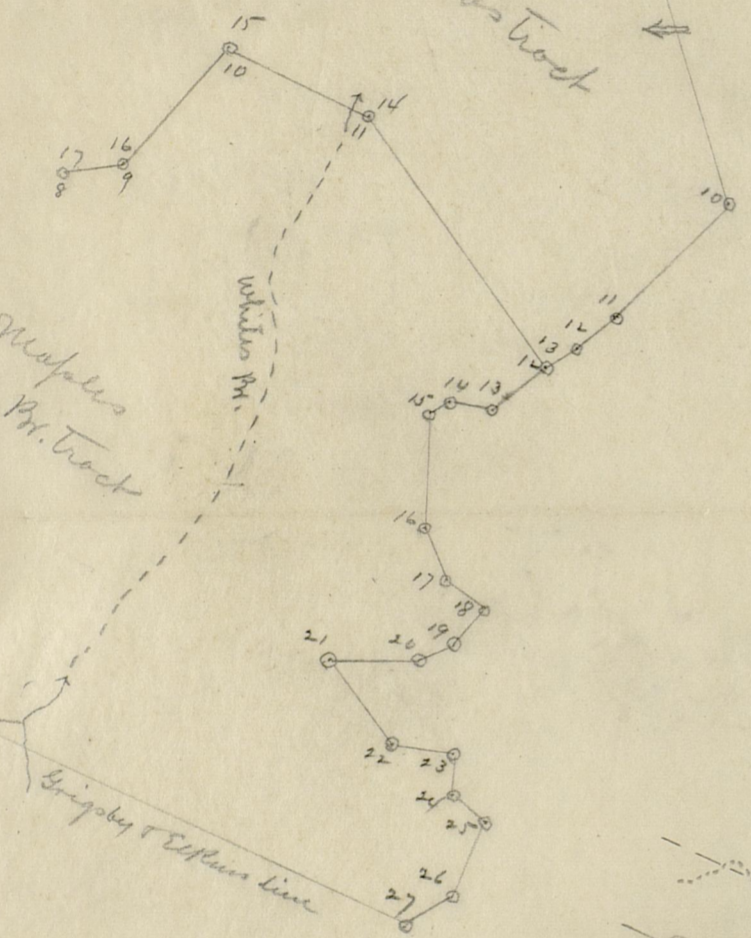


VII

John Edwards tract

Leonardus Whites Pt. tract

Whites Pt.



Spot Cliffs with  
R.C. point rocks

S41 1/2 E 32.4

W.O. Stump but cr. S.

Cliffs

Leaning Lynn

St. in Co. Road  
w. a. 10' diam. R. pointer  
at S. Cliff

S 91 1/2 E 70

R.O. 30' diam  
in cove

N 182 E 19.5

35'  
W.O. with old  
cr. may K.S.

N 41 1/4 E 30

Whites Pt.

54 1/2 E 29

S 53 1/2 E 16  
S 78 1/4 E 46  
129

10° N 65 3/4 W 17

Leaving S.S. Cliff

C.O. growing around  
Rock nr. Cliffs

S.E. nr. Cliff

Small Oak (Sour)  
C.O. pointer  
nr. S. Cliff

S 46 1/2 W 40 1/4

St. at S.S. Cliff H. pointer

30-Deg on  
hill side

White Pine

C. about 5  
5' W

Do under S.S. Cliff  
Cucumber at  
point of Cliff

Sl. with S. & P.A.  
pointer

S 37 W 26

S 37 W nr passing to top of S.S. cliff  
thence along edge of same

129

top S.S. Cliff

S 52 1/2 E 8 in 454

W.A. - 10

S 51 1/2 E 16 in 129

St. C.O. pointer

Point Ridge

S 52 W 26

S 57 W 12

St. at F

S 57 W 12

S 57 W 12

St. nr. doubt C.O. in  
top in Cliffs

S 59 W 12 in 454

Birch at head of Br  
of Whites Pt. Course N 64 W

St. in Grigsby & Elkins line

K 65 W

VIII

Grigsby & Elkins line

VIII

VIII

VIII