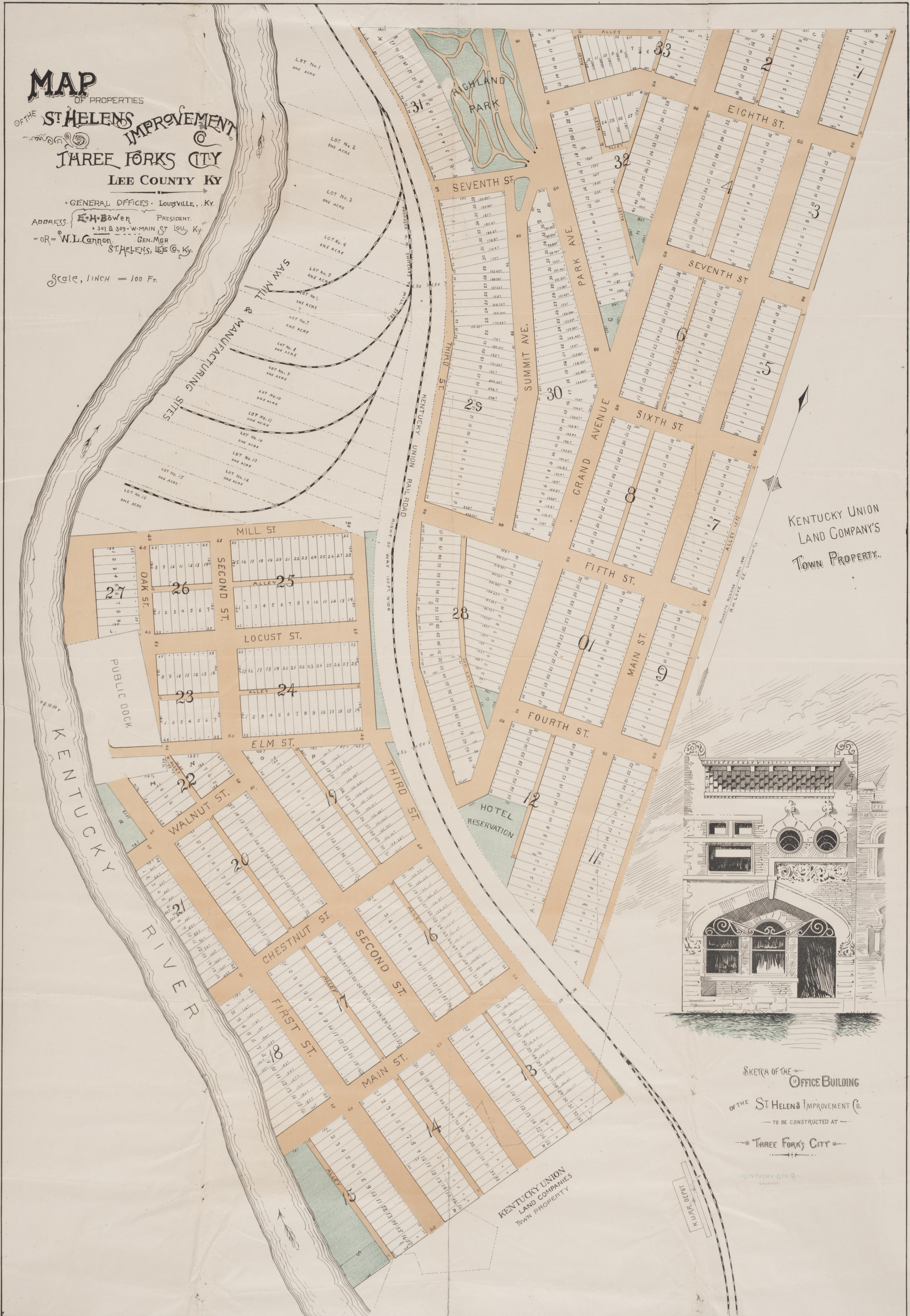


MAP
OF PROPERTIES
OF THE **ST HELENS IMPROVEMENT CO**
THREE FORKS CITY
LEE COUNTY KY

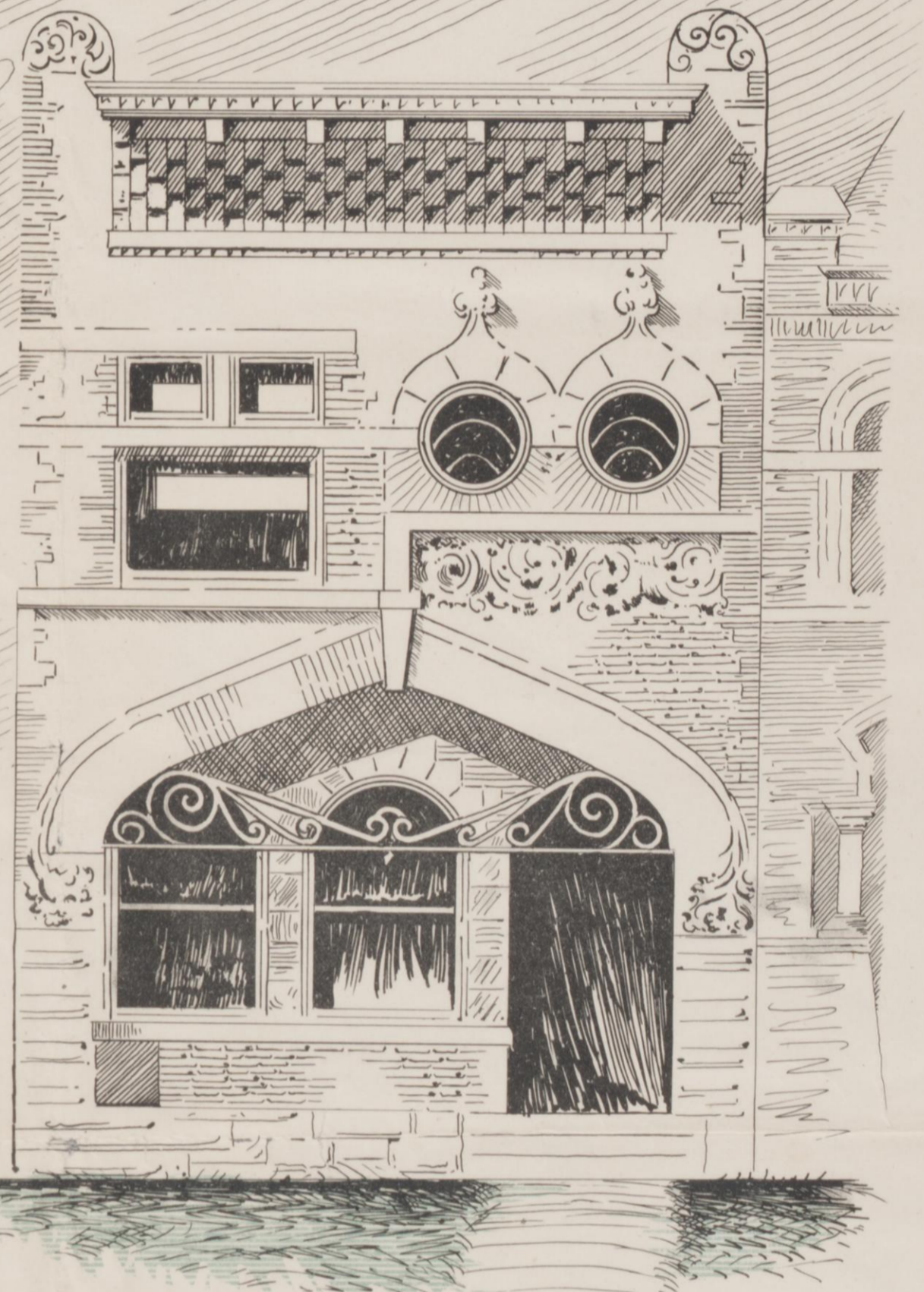
GENERAL OFFICES · LOUISVILLE, KY.

ADDRESS: **E.H. Bowen** PRESIDENT,
301 & 303 W. MAIN ST LOU, Ky.
-OR- **W.L. Cannon** GEN. MGR,
ST. HELENS, LEE CO, Ky.

Scale, 1 INCH = 100 FT.



KENTUCKY UNION
LAND COMPANY'S
TOWN PROPERTY.



SKETCH OF THE
OFFICE BUILDING
OF THE ST HELENS IMPROVEMENT CO
TO BE CONSTRUCTED AT
THREE FORKS CITY

KENTUCKY LITH. CO.
LOUISVILLE