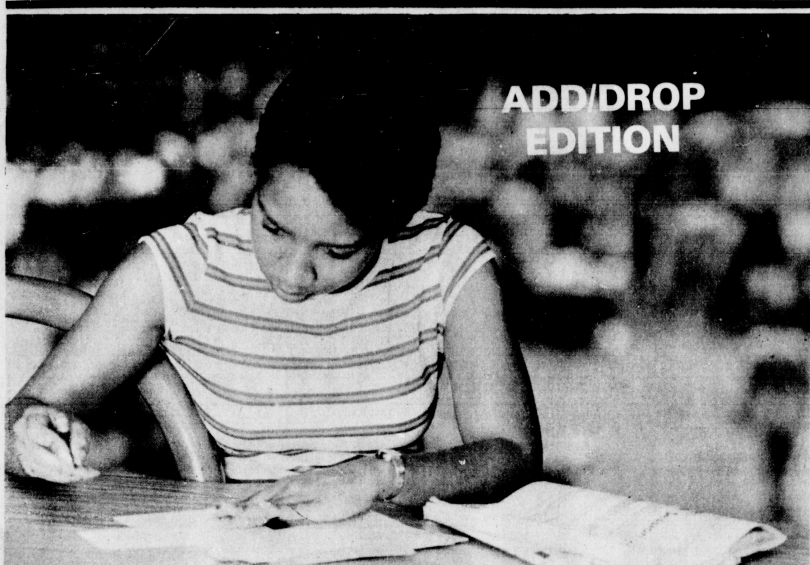


KENTUCKY Kernel

Monday, January 11, 1982

An independent student newspaper since 1971

University of Kentucky
Lexington, Kentucky



ADD/DROP EDITION

By J.D. VANHOOSE/Kernel Staff

Anxiously Adding

An unidentified UK student carefully checks her schedule book for information on classes she has added to her schedule at last semester's centralized add/drop in Memorial Coliseum. Approximately 6,000 were at the last

add/drop session and an equal number is expected tomorrow. Officials with add/drop urge students to bring their 1982 spring semester class schedule books because they are in short supply.

Changes in financial aid now in effect

By JANE GIBSON
Staff Writer

Several changes in financial aid, which became effective Oct. 1, 1981, will affect certain students receiving financial assistance during the spring semester.

These changes will only affect students whose financial aid was approved on or after Oct. 1, 1981. Students who received financial aid before Oct. 1 but whose aid is dispersed in both semesters will not be affected.

The only change in campus-based programs, those other than the Guaranteed Student Loan, is that interest rates on National Direct Student Loans approved after Oct. 1 will have a 5 percent interest rate, up from the current 4 percent.

Three governmental changes will affect the Guaranteed Student Loan program. First, a five percent origination fee, which is a fee charged

on the loan by the lending institution, went into effect at the beginning of the school year.

James Ingle, director of the office of student financial aid, said he anticipated no problems in meeting commitments for students applying for financial aid for the spring semester. These students will still receive approximately \$300 less than their demonstrated need because "it would not be fair to meet their needs fully and not those who applied in the fall," Ingle said.

Distribution of financial aid checks will be the week of Jan. 12 in the Grand Ballroom of the Student Center. Hours for the alphabetic distribution will be 9 a.m. to 3 p.m. Monday through Friday.

Ingle said he would only authorize checks to be written if a student was preregistered or showed up on an enrollment list. This means students who register Monday or Tuesday or later register will not have their aid checks available at this time.

For Basic Grant recipients only, if the student is preregistered for only 9 to eleven hours, only three-fourths of the financial aid qualified for if registered full time will be received, according to Ingle.

Students registered for only 6 to 8 credit hours will receive only one-half of the full amount of their aid. If a student adds enough hours to qualify as a full-time student and provides proof of these added hours, the student will receive the full amount awarded by Basic Grant, Ingle said.

Students who have assistance coming from a third source outside the University (i.e., scholarship or GSL) may receive a promissory note beginning Jan. 18 from the school if those funds have not been received by tuition deadlines.

Secondly, students applying for a Guaranteed Student Loan after Oct. 1 whose family adjusted growth income exceeds \$30,000 must demonstrate need before applying for a loan. For students whose family income is less

than \$30,000, the system will operate the same, except for the origination fee.

Students whose income is in excess of \$30,000 may borrow only to the extent of their need determined by the UK Financial Aid office. In addition, students may not borrow more than the cost of attending college minus other aid and resources received. However, students whose need is estimated between \$500 and \$1,000 will be permitted to borrow \$1,000.

Minimum repayment for the GSL has been increased from \$30 a month to \$50 a month effective Oct. 1, 1981. The repayment period remains ten years.

Another major change effecting students in their future attempts to attain financial aid is that effective Oct. 1, Social Security and Veterans benefits received by students are counted as aid received when estimating need.

Procedures outlined

Add/drop is a good option

By ANDREW OPPMANN
Senior Staff Writer

If you are unhappy with the schedule that the computer gave you, there remains an option to beat the machine.

Add/drop, the procedure by which you can change your schedule to your academic needs, is your best option.

The procedure will be centralized for one day — tomorrow in Memorial Coliseum starting at 10 a.m.

Although the one-day centralized add/drop procedure saves students from walking to the different academic departments to change their schedule, the huge crowds and long lines in the Coliseum tomorrow may be a very frustrating procedure.

Before traveling to the Coliseum, plan ahead what you want to drop and what you need to add. Once you have decided upon what you want, you need to get a computer card for each class change. The computer cards can be picked up from the individual department tables located on the course and central floor of the Coliseum (i.e., if you were dropping MA 113 and adding JOU 101, you would need a computer card from the journalism department and the math department).

You will also need an add/drop slip to complete all your schedule transactions. Only one add/drop slip will be needed because each slip has space for seven class changes. All computer cards must be filled out with a No. 2 lead pencil.

Here are some other things students should remember:

Get an instruction sheet provided at the entrance. It will provide a detailed explanation for the entire add/drop procedure. It also includes a map of the Coliseum showing the location of the different tables.

Get an IBM permit card. One such card is assigned to every student. You can get your card at the entrance; every student going through add/drop must have this card.

ALWAYS ADD A CLASS BEFORE YOU DROP A CLASS! Make sure you can get the class you want before you drop any course.

Have your UK student ID at all times.

You may pick up the add/drop slip from your adviser before coming to the Coliseum, or you can pick up one from the check-in table in the Coliseum.

Arrive at your appointed time (see schedule box below). Students are processed alphabetically. Although you can arrive late and still go through centralized add/drop, no student will be admitted before his or her appointed time.

You also can change your grade option (audit, pass-fail and letter) and adjust the number of credit hours for variable courses tomorrow at the Coliseum.

Tomorrow is also the last day you can withdraw from a class and be eligible for a full refund. Classes will start on Wednesday.

Also on Wednesday, non-centralized add/drop for the College of Arts & Sciences will be held in Buell Hall; all other add/drop will be held in the deans' office of the individual colleges.

ADD/DROP Schedule Tuesday, Jan. 12

10:00 Rj-Sm	1:00 Dj-F
10:30 Sn-U	1:30 G-Hn
11:00 V-Z	2:00 Hco-Kh
11:30 A-Bi	2:30 Ki-Mb
12:00 Bm-Che	3:00 Mc-O
12:30 Ch-Di	3:30 P-Ri

Important dates

Jan. 12 — Last day to withdraw from a class and be eligible for a full refund if status is changed from full-time to part-time.

Jan. 26 — Last day to pay registration fees to avoid cancellation of your registration.

Feb. 2 — Last day to change grading option.

Feb. 4 — Last day for reinstatement of students cancelled for not paying registration fees; must pay registration fee plus \$50 reinstatement fee.

Mar. 4 — Last day to drop a course

Mar. 15-20 — Spring vacation

May 3-7 — Final examinations

For the fun of it

Spring semester will be filled with many things that ease the routine

By BARBARA SALLEE
Staff Writer

This semester has a lot ahead for students.

It will be filled with studying (yuck!), homework (even worse), term papers (gross-out), exams (break out the No Doze) and add/drop (worst of all).

But, before the fun can begin, there are several important dates that need to be kept in mind:

Jan. 13-14 — Late registration for returning students who did not advance register and for new students cleared late for admission. It will be located on the Mezzanine of Patterson Office Tower from 8:30 a.m. to 4 p.m. A \$20 late fee is charged for late registration.

Jan. 13 — Classes begin.

Jan. 15 — Last day to pay tuition and housing fees in the Student Center Ballroom.

The coming semester also holds many fun things, too. Here is a short guide to fill those hours that are not devoted to academic efforts.

Basketball Season—

Jan. 23 — The Wildcats play against Vanderbilt at Rupp Arena. The Lady Kats play Michigan at Memorial Coliseum.

Jan. 27 — The Wildcats take on Mississippi State at Mississippi State.

Jan. 28 — The Lady Kats travel to Tennessee to take on the Lady Vols.

Jan. 30 — The Wildcats will face Georgia at Rupp Arena.

Jan. 31 — The Lady Kats play Memphis State at Memorial Coliseum.

Feb. 3 — The Wildcats leave UK to take on Auburn.

Feb. 4 — The Lady Kats also go away to play Georgia State.

Feb. 6 — The Wildcats stay home to play Tennessee, while the Lady Kats hit the road to play Georgia.

Feb. 9 — The Lady Kats play a home game against National College at Memorial Coliseum.

Feb. 10 — The Wildcats, once again, play Mississippi. This will be a home game at Rupp Arena.

Feb. 13 — Both teams hit the road. The Wildcats will be pitted against Alabama. The Lady Kats will play South Carolina.

Feb. 17 — Florida State University takes a road trip to Rupp Arena to tackle the Wildcats.

Feb. 18 — The Lady Vols of Tennessee arrive at Memorial Coliseum to play the Lady Kats.

Feb. 20 — The Lady Kats travel to Florida, while the men's team travels to Vanderbilt.

Feb. 23 — The Lady Kats stay home to take on Louisville.

Feb. 24 — The Wildcats stay home to play Mississippi State.

Feb. 26-March 1 — The Lady Kats play in the Southeastern Conference Tournament.

Feb. 27 — The Wildcats travel all the way to Louisiana State University to tackle the Tigers.

March 2-4 — The SEC Tournament will be played at Rupp Arena.

March 12-14 — The National College Athletic Association first round begins for the Lady Kats. The location will be announced at a later date.



March 18-21 — The Lady Kats will play in the NCAA Regional Tournament.

March 26-28 — The final four women's teams will play in the NCAA Final Four Tournament, and of course, the location of this tournament will be announced at a later date.

If you don't like basketball, there are still things to do with your free time. There is the Sigma Nu Beer

Blast scheduled for early April, a specific date will be announced at a later time.

The Kentucky Derby will be held on Saturday May 1 at Churchill Downs in Louisville. Although not too many people in the infield actually care which horse wins the "run for the roses", there is always a party going on.

There are also holidays to look forward to.

There's Valentine's Day; this is a real fun holiday when you can get romantic and corny and get away with it without being laughed at. The next holiday that is usually celebrated is St. Patrick's Day. This is the day you can wear kelly green and not be referred to as a "prep." This probably the only day of the year people will drink green beer willingly.

The biggest thing to look forward to in the spring semester is, of course, IS SPRING BREAK! This vacation, March 15-20, is considered by many students, as the only redeeming aspect about of the spring semester. Some students leave the cold confines of UK, for the sunny climate of the deep south to soak up the rays.

Spring vacation also means there are less than two months left of school! The month of May brings a fresh crop of graduates. This means those people will never have to go through add/drop again, unless they go to graduate school. Lucky them.

Several UK organizations present a variety of activities

By RACHEL BERRY
Staff Writer

If you've got the winter doldrums and the spring semester blues, don't despair — there's a lot to look forward to.

Willard Scott, the colorful weatherman from the "Today Show" will be speaking in Memorial Coliseum on lucky Concert and Lecture Series. In addition, CKCLS will present the Sofia Philharmonic of Bulgaria on Feb. 11 and The Canadian Brass on Mar. 9. All concerts and lectures are open free to UK students with an ID and activities card.

The Student Center Board Travel Committee is sponsoring several trips this semester. Students can sign up to ski at Winterpark, Colorado or to cruise the Caribbean over spring break (Mar. 13-21). The committee has also planned a camping/hiking trip to Mt. Sterling on Mar. 28 and a day trip to Bardonia on Apr. 10.

The Kentucky Heritage Dancers will perform in the Student Center on Feb. 10 as part of the SCB Performing Arts Committee schedule. They will

also present the Hobos' Barbershop Quartet on Mar. 24.

Greek Week, a week of activities across campus, is scheduled for Mar. 28-Apr. 3 this semester. Highlights will include such productions as Kappa Alpha Psi Fraternity's Gong Show.

The Women Writers Conference, a nationally acclaimed seminar open free to students, is planned for Apr. 1-3.

If music is more to your taste, a Contemporary Music Festival will be on campus Apr. 4-9. And if you need more excitement that week, the International Students Office will sponsor International Week during that same period.

The highlight of the spring semester will be the Little Kentucky Derby Weekend Apr. 16-18.

A kickoff banquet, street party, bike races, barbeque, balloon race, foot race and an LKD Extravaganza are all scheduled as part of the event.

The semester will start winding down with SCB's Night at the Theater. This year, "Deathtrap" will be produced.

Other concerts, guest lecturers and special events still to be planned will round out the spring semester's activities. So don't despair — after add/drop ends, the fun begins!

2-THE KENTUCKY KERNEL, Monday, January 11, 1982
SUPPLEMENT TO

SCHEDULE OF CLASSES

This Schedule of Classes Supplement lists all of the OPEN classes for the 1982 Spring Semester which are available for Coliseum registration on January 11, 1982. Some of the courses listed have very few spaces available.

This Supplement must be used in conjunction with the regular Schedule of Classes since the days when classes meet, times, and rooms are ONLY listed for those courses (or sections) which have been added or where there has been a change in the original information.

The format of this Supplement is the same as the regular schedule, i.e., the colleges are listed alphabetically.

THESE ARE OPEN COURSES ONLY

NOTE 1: Advance registration dates for Fall Semester 1982 and both Summer Sessions are April 12-21, 1982. Advance registration is required for all continuing students.

NOTE 2: University Senate regulations give faculty members the option of dropping students who do not attend the first two class meetings.

SPECIAL PROGRAMS AND COURSES

EXPERIENTIAL EDUCATION

EXP 396 001
For other Experiential Education courses, see appropriate departmental listings.

WOMEN'S STUDIES

WS 200 001
For other courses being offered under Women's Studies, see appropriate departmental listings.

COLLEGE OF AGRICULTURE

AGRICULTURAL ECONOMICS

AGRICULTURAL FINANCIAL MGMT 3 MW 1200-1250PM AGN S221 BRADFORD

AGRICULTURAL ENGINEERING

AEN 345 001

AGRONOMY

*27669 AGR 654 001 CROP PHYSIOLOGY 3 HOURS ARR BUSH/DAVIS

ANIMAL SCIENCES

*29751 ASC 362 001 ANIMAL BREEDING 3 MW 0900-0950AM AGS 108 THRIFT

ENTOMOLOGY

*29793 ASC 382 001 PRIN OF LIVESTOCK NUTRITION 3 TR 1100-1150AM AGN N320 BUCK

FORESTRY

*43079 FOR 455 001 FOREST POLICY & ADMINISTRATION 3 TR 1100-1215PM TPC 212 ERICKSON

GENERAL AGRICULTURE

*91341 GEN 300 001 SP CRSE: PLANE SURVEYING 3 TR 0100-0150PM AH 262 LAND

HORTICULTURE AND LANDSCAPE ARCHITECTURE

*47201 HOR 203 001 HOME HORTICULTURE 3 TR 1100-1215PM AGN N12 WITT

Landscap Architecture

*49212 LA 230 001 LANDSCAPE ARC DESIGN THEORY 3 MW 0900-0950AM CH CERVELLI

PLANT PATHOLOGY

*59285 PPA 545 001 EPIDEM CONT PL DISEASE 3 MW 1000-1050AM AGN N11 FERRISS/SIEGEL/SHEEN

SOCIOLOGY

SOC 517N401 SOC 534 001 SOC 565 001 SOC 773 001 *SOC 790 001 *SOC 797 001

VETERINARY SCIENCE

VS 350 001 *VS 395 001 *VS 768 001 *VS 781 001 *VS 791 001 *VS 792 001 *VS 793 001

COLLEGE OF ALLIED HEALTH PROFESSIONS

ALLIED HEALTH EDUCATION AND RESEARCH

*#91057 AHE 854 002 BIOLOGY OF DISEASE 3 TBA ALBERHASKY

CLINICAL NUTRITION

CNU 602 001 CNU 702 001 #CNU 781 001 #CNU 782 001 CNU 800 001 CNU 801 001 CNU 802 001

CLINICAL PASTORAL COUNSELING

*35289 CPC 501 001 PERSP IN REL & HLTH 3 TR 0800-0915AM CN/HS 211 FITZGERALD

COMMUNITY HEALTH

CH 101 001 CH 210 001 CH 210N401 CH 420N401 CH 481 001 CH 511 001

HEALTH RADIATION SCIENCES

#HRS 395 001 HRS 545 001 #HRS 690 001 #HRS 695 001 HRS 710 001 #HRS 715 001 #HRS 720 001

MEDICAL TECHNOLOGY

*52990 MT 855 001 CLINICAL SEROLOGY 3 W 0800-0950AM HS 214 LYONS

PHYSICAL THERAPY

#PT 805 001 #PT 815 001 #PT 828 001 #PT 835 001 #PT 856 001 PT 868 001 PT 898 001

COLLEGE OF ARCHITECTURE

ARC 101 001 ARC 221 001 *ARC 820B002 ARC 823 001 ARC 911 001 *ARC 964B002 ARC 964J008

COLLEGE OF ARTS AND SCIENCES

A&S 100 001

AEROSPACE STUDIES

AS 112 001 AS 112 004 AS 212 001 AS 213 002 AS 333 001 AS 343 002 AS 343 002 AS 395 001

ANTHROPOLOGY

ANT 120 001 ANT 120 010 ANT 121 005 ANT 121 015 #ANT 383 001 ANT 533 001 #ANT 720 001

BIOLOGICAL SCIENCES

BIO 102 001 BIO 107 004 BIO 203 002 BIO 351 004 BIO 544 002 BIO 594 003 BIO 769 001

CHEMISTRY

#CHE 102R002 CHE 115 003 #CHE 231 001 CHE 410G001 CHE 533 001 CHE 616 001 CHE 769 001

*#91066 CHE 236 001 ORGANIC CHEMISTRY 4 MW 0800-0850AM CP 220 STAFF

CLASSICAL LANGUAGES AND LITERATURES

CLA 102 001	CLA 104N401	CLA 202 001	CLA 252 001	CLA 4266401	CLA 553 001	CLA 602 001
CLA 102 002	CLA 131 001	CLA 202 002	CLA 261 001	CLA 502 001	CLA 561 001	CLA 603 001
CLA 102 003	CLA 131N401	CLA 230 001	CLA 302 001	CLA 509 001	CLA 562 001	CLA 604 001
CLA 102N401	CLA 131N402	CLA 230 001	CLA 311 001	CLA 511 001	CLA 580 001	CLA 768 001
CLA 104 001	CLA 152 001	CLA 235 001	CLA 390N401	CLA 512 001	CLA 601 001	CLA 790 001
CLA 104 002	CLA 154 001					

COMPARATIVE LITERATURE

CLT 395 001	CLA 390N401	#ENG 390 001	SPI 400 001	SPI 541 001	SPI 566 001	#HON 302B002
CLA 261 001	CLA 4266401	#SPI 315 001				

COMPUTER SCIENCE

#CS 101 001	#CS 101 009	#CS 101 017	#CS 221 010	CS 250 007	CS 537 001	CS 650 001
#CS 101 002	#CS 101 010	CS 101A018	#CS 240 005	#CS 250A011	#CS 537 002	CS 655 001
#CS 101 004	#CS 101 011	CS 101N401	#CS 250 002	+CS 340 002	CS 570 001	+CS 675 001
#CS 101 005	#CS 101 012	CS 101N402	#CS 250 004	+CS 370 003	CS 612 001	CS 685 001
#CS 101 007	#CS 101 014	+CS 150 001	CS 250 005	CS 395 001	CS 620 001	CS 768 001
#CS 101 008	#CS 101 016	#CS 221 009	CS 250 006	CS 4206001	CS 622 001	

+91073 CS 150 001 INTRO TO ALGORITHMIC PROCESSES 3 MWF 1100-1150AM MH 108 STAFF

+92428 CS 240 005 INTRO DISCRETE COMPUTER MATH 3 TR 1230-0145PM CB 341 STAFF

+92380 CS 340 002 DISCRETE STRUCTURES IN CS 3 MWF 0300-0350PM CP 201 STAFF

+92398 CS 370 003 DATA STRUCTURES DISCUSSION 3 TR 0930-1045AM CB 242 STAFF
F 0300-0350PM CB 242

+91081 CS 675 001 THEORY OF COMPUTATION 3 MWF 0200-0250PM OT 945 LEWIS

DEVELOPMENTAL STUDIES

ASK 010 001	ASK 010 003	ASK 018 001	ENG 101W001	ENG 101W003	MA 108W001	MA 108W003
ASK 010 002	ASK 010 004	#ASK 018 002	ENG 101W002	ENG 101W004	MA 108W002	MA 108W004

ENGLISH

ENG 101 005	#ENG 102 013	#ENG 102 067	ENG 105 005	ENG 261 001	ENG 374 003	ENG 4556401
ENG 101 006	#ENG 102 014	#ENG 102 068	#ENG 105 006	ENG 262 002	ENG 375 001	ENG 4735001
ENG 101 007	#ENG 102 015	#ENG 102 069	ENG 105 007	ENG 261 004	ENG 380 001	ENG 4806001
ENG 101 008	#ENG 102 016	#ENG 102 071	#ENG 105 008	ENG 262 001	ENG 380 002	ENG 501A001
ENG 101 009	#ENG 102 046	ENG 102A072	ENG 105 009	ENG 262 002	#ENG 390 001	ENG 501B002
ENG 101 010	#ENG 102 048	ENG 102A073	ENG 105A010	ENG 262 006	ENG 395 001	ENG 509 001
#ENG 101 011	#ENG 102 049	ENG 102N401	ENG 105N401	ENG 262N401	ENG 401 001	#ENG 514 001
ENG 101 012	#ENG 102 050	#ENG 102N402	ENG 161N401	ENG 264N401	#ENG 405 001	#ENG 568 001
ENG 101 013	#ENG 102 051	ENG 102N403	ENG 201 001	#ENG 271 001	ENG 4146001	ENG 572 001
ENG 101 014	#ENG 102 052	ENG 103N401	ENG 207A001	ENG 281 001	ENG 4236001	ENG 581 001

THE KENTUCKY KERNEL, Monday, January 11, 1982-3

ENG 101 018	#ENG 102 053	ENG 104 001	ENG 207A003	ENG 281 002	#ENG 4256001	ENG 620 001
ENG 101N401	#ENG 102 054	#ENG 104 003	ENG 207B002	#ENG 301 003	ENG 4256401	ENG 635 001
ENG 101N403	#ENG 102 056	#ENG 104 006	ENG 207C004	ENG 320 002	ENG 4276001	ENG 643 001
ENG 101N404	#ENG 102 057	#ENG 104 007	#ENG 221 002	ENG 320 003	ENG 4286001	ENG 652 001
#ENG 102 003	#ENG 102 058	#ENG 104 010	#ENG 221 009	*ENG 356 001	ENG 4316001	ENG 673 001
#ENG 102 004	#ENG 102 059	#ENG 104 011	#ENG 222 001	ENG 360 001	ENG 4396001	ENG 738 001
#ENG 102 005	#ENG 102 060	ENG 105 001	#ENG 222 003	#ENG 360 002	ENG 4416001	#ENG 753 001
#ENG 102 006	#ENG 102 062	#ENG 105 002	#ENG 222 005	ENG 368 001	ENG 4466001	ENG 768 001
#ENG 102 010	#ENG 102 063	#ENG 105 003	#ENG 222 006	ENG 374 001	ENG 4526001	#ENG 769 001
#ENG 102 011	#ENG 102 064	ENG 105 004	ENG 222N401	ENG 374 002	ENG 4556001	ENG 780 001
#ENG 102 012	#ENG 102 065					

*41912	ENG 356 001	STUDIES IN BLACK AMERICAN LIT	3	MWF	0900-0950AM	CB 237	TIDWELL
*42251	ENG 514 001	TESL MATERIALS & METHODS	3	MWF	1000-1050AM	FB 124	HUDAK
+90841	ENG 568 001	HIS OF LITERARY CRITICISM I	3	MWF	1200-1250PM	COM 221	BRYANT

FRENCH LANGUAGE AND LITERATURE

FR 011 001	#FR 101 008	FR 106 001	#FR 202 002	FR 306 001	#FR 500 001	#FR 609 001
#FR 101 001	FR 101 009	FR 121 001	#FR 202D004	FR 395 001	FR 507 001	FR 768 001
#FR 101 002	FR 101 010	#FR 201 005	#FR 203 001	#FR 406 001	FR 516N401	FR 769 001
#FR 101 006	FR 102N401	#FR 202 001	FR 305 001	FR 4396001	FR 601 001	FR 780 001
#FR 101 007						

*43613	FR 500 001	INTRO TO FRENCH FILM	3	TR	1230-0145PM	CB 335	BARIL
--------	------------	----------------------	---	----	-------------	--------	-------

GEOGRAPHY

GEO 151 001	GEO 153 001	GEO 252 002	*GEO 501 001	GEO 543 001	GEO 652 001	GEO 710 001
GEO 151 002	GEO 221 001	*GEO 252 003	GEO 505 001	GEO 546 001	GEO 655 001	GEO 715 001
GEO 151 003	GEO 221 002	*GEO 252N401	GEO 507 001	GEO 550 001	GEO 655B002	GEO 715 002
GEO 151N401	GEO 221 003	*GEO 255 001	GEO 522 001	GEO 560 001	GEO 655C003	GEO 768 001
GEO 152 001	GEO 221 004	#GEO 305 001	*GEO 522N401	*GEO 601 001	GEO 695 001	GEO 769 001
GEO 152 002	GEO 221 005	GEO 305 001	GEO 528 001	GEO 625 001	GEO 700 001	GEO 771 001
GEO 152 003	GEO 252 001	GEO 407 001	GEO 536 001	GEO 630 001	GEO 707 001	GEO 772 001
*GEO 152N401						

*43800	GEO 152N401	REGIONAL GEO OF WORLD	3	MW	0730-0845PM	CB 247	PAUER
*43907	GEO 252N401	ELEMENTS OF HUMAN GEOGRAPHY	3	TR	0730-0845PM	CB 247	KING
*90026	GEO 501 001	FIELD STUDIES IN GEOGRAPHY	3	MWF	0300-0350PM	OT 110	FRIERBG
*44083	GEO 601 001	FIELD METHODS IN GEOGRAPHY	3	MWF	0300-0350PM	OT 110	FRIERBG

*Added course
*Changed course
#Five or fewer vacancies

Follow
the
Cats
with
Kernel
Sports



A Truly Unique Record Store...

Bring this ad in
For 1.00 off
Album, 8 Track or
Cassette
Expires 1/31/82

Disc Jockey 2909 Richmond Rd. Lakeview Plaza 266-9423
Disc Jockey 145 Moore Drive 276-1434

UK and you
in the
news:
the
Kentucky
Kernel



Ashland Avenue Baptist Church
140 NORTH ASHLAND AVENUE - LEXINGTON, KENTUCKY 40502 - TELEPHONE 288-2411 (LIC 501)

Ross L. Range D.D., Pastor
Hershael York, Minister of Music & Youth

THE ASHLAND AVENUE BAPTIST CHURCH
INVITES YOU TO ATTEND

WORSHIP AT ASHLAND AVENUE IS A MEANINGFUL EXPERIENCE. BE IT IN OUR COLLEGE CLASS, WORSHIP SERVICE, YOUTH BIBLE STUDY, OR PRAYER MEETING. YOU CAN GET CLOSER TO OTHERS AND TO GOD

Sunday School 9:15 a.m.
Worship Service 10:30 a.m.
Evening Bible Study 6:15 p.m.
Worship Service 7:30 p.m.
Wednesday Prayer Meeting 7:30 p.m.

Special Music Every Sunday

The Studio

Register Now For
Spring Classes!

CLASSES beginning
Jan 18th

CO-ED CLASSES
Student, Faculty
Discount
Aerobics • Ballet • Tap
Jazz Exercise
Modern Dance

CALL 266-0738 266-9456

The Studio
2350 Woodhill Center

4-THE KENTUCKY KERNEL, Monday, January 11, 1982

GEOLOGY

GLY 144 001 GLY 146N401 GLY 240 004 +GLY 401 002 #GLY 602 001 #GLY 655 001 GLY 768 001
 GLY 144 002 GLY 210 001 GLY 240 005 #GLY 530 001 #GLY 620 001 GLY 660 001 GLY 769 001
 GLY 144 003 #GLY 240 001 GLY 242 001 GLY 531N401 #GLY 653 001 GLY 703 001 GLY 782 001
 GLY 146 001 #GLY 240 002 GLY 341 001 *GLY 540 001 #GLY 654 001 GLY 741 001 GLY 782N401
 GLY 146 002 #GLY 240 003 GLY 395 001 #GLY 571 001

*92452 GLY 401 002 PALEONTOLOGY 3 T 0930-1020AM BOW 51 CAMPBELL
 TR 0100-0250PM BOW 51

*44849 GLY 540 001 ADVANCED GENERAL GEOLOGY 3 TR 0100-0215PM BOW 432 ROBERTS

GERMANIC LANGUAGES AND LITERATURES

GER 011 001 #GER 101 005 GER 102 006 GER 201 002 GER 204 001 #GER 319 001 GER 635 001
 GER 101 001 GER 101 006 #GER 102 007 GER 202 001 GER 252N401 #GER 395 001 GER 642 001
 GER 101 002 GER 102 001 GER 102 008 GER 202 003 GER 261 001 GER 415G001 #GER 768 001
 GER 101 003 GER 102 002 GER 102N401 GER 202N401 *GER 309 001 #GER 622 001 #GER 769 001
 GER 101 004 #GER 102 003 GER 201 001

*44504 GER 309 001 GER COMPOSITION & CONVERSATION 3 MF 0100-0150PM OT 112 RIESTER
 HISTORY

#HIS 104 004 #HIS 108 005 #HIS 109 002 #HIS 109 029 #HIS 109H451 HIS 395 001 HIS 575 001
 HIS 104N401 #HIS 108 006 #HIS 109 003 #HIS 109 030 #HIS 109N401 HIS 503 001 HIS 579 001
 HIS 105 002 #HIS 108 007 #HIS 109 004 #HIS 109 031 #HIS 203 001 HIS 509 001 HIS 584 001
 HIS 105 003 #HIS 108 008 #HIS 109 005 #HIS 109 032 HIS 230 001 #HIS 511 001 HIS 591 001
 HIS 105 004 #HIS 108 009 #HIS 109 007 #HIS 109 033 HIS 240 001 HIS 520 001 HIS 595A001
 HIS 105 005 #HIS 108 010 #HIS 109 008 #HIS 109 034 HIS 240N401 HIS 522 001 HIS 595B002
 HIS 105 006 #HIS 108 011 #HIS 109 009 #HIS 109 035 HIS 248 001 HIS 525 001 HIS 595N401
 HIS 105 007 #HIS 108 012 #HIS 109 010 #HIS 109 036 HIS 286 001 HIS 530 001 HIS 596 001
 HIS 105 008 #HIS 108 014 #HIS 109 011 #HIS 109 037 HIS 296 001 HIS 535 001 HIS 626 001
 HIS 105 010 #HIS 108 015 #HIS 109 012 #HIS 109 038 HIS 311 001 HIS 549 001 HIS 632 001
 HIS 105 011 #HIS 108 016 #HIS 109 017 #HIS 109 039 HIS 316 001 HIS 557 001 #HIS 634 001
 #HIS 105H451 #HIS 108 017 #HIS 109 022 #HIS 109 040 HIS 316 002 HIS 558 001 HIS 695 001
 #HIS 105N401 #HIS 108 018 #HIS 109 023 #HIS 109 041 HIS 316 003 HIS 562 001 #HIS 695 002
 #HIS 108 001 #HIS 108 019 #HIS 109 025 #HIS 109 042 HIS 351A001 HIS 566 001 HIS 712 001
 #HIS 108 002 #HIS 108 020 #HIS 109 026 #HIS 109 043 HIS 351B002 HIS 571 001 HIS 768 001
 #HIS 108 003 HIS 108N401 #HIS 109 027 #HIS 109 044 #HIS 352 001 HIS 573 001 HIS 769 001
 #HIS 108 004 #HIS 109 001 #HIS 109 028 #HIS 109 051 #HIS 353 001

*92461 HIS 104 004 A HIS OF EUROPE TO 1713 3 TR 1100-1215PM AP 106 EASTWOOD

*#45641 HIS 105H451 HIS OF EUROPE 1713-PRESENT 3 MF 0900-0950AM COM 320 POPKIN

*#91359 HIS 695 002 INDEPENDENT WORK 1-3 TBA STAFF

LATIN AMERICAN STUDIES

LAS 395 001 HIS 351B002 SPI 213 001 SPI 242 003 #SPI 310 001 SPI 501 001 SPI 541 001
 LAS 401 001 PS 538 001 #SPI 242 001

LINGUISTICS

#LIN 395 001 ENG 414G001 FR 516N401 PHI 320 002 *PSY 529 001 SPI 501 001 SPI 504 001
 ANT 215 001 *#ENG 514 001 #PHI 320 001 PHI 520 001 SO 411 001

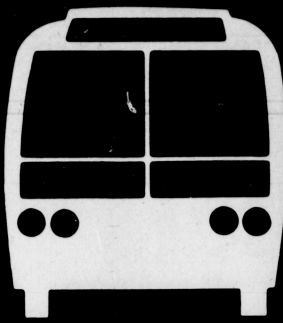
*#42251 ENG 514 001 TESL MATERIALS & METHODS 3 MF 1000-1050AM FB 124 HUDAK

*60747 PSY 529 001 PSYCHOLINGUISTICS 3 TR 1100-1215PM EH 203 BELMORE

MATHEMATICS

MA 108R405 #MA 113 010 MA 114A016 MA 131 002 #MA 213 009 MA 413G001 #MA 622 001
 MA 108R406 #MA 113 014 MA 114H451 #MA 132 001 #MA 214 007 MA 417G001 #MA 633 001
 MA 108R408 MA 113 015 MA 122N401 MA 132 002 #MA 214 008 MA 432G001 MA 651 001
 MA 108R409 MA 113 016 MA 122N402 MA 201 001 #MA 214 009 MA 433G001 #MA 655 001
 MA 108R410 MA 113 017 #MA 123 005 #MA 201 003 MA 320 001 MA 481G001 MA 661 001
 MA 108R411 MA 113 018 #MA 123 006 #MA 201 004 MA 322 002 #MA 483G001 #MA 670 001
 MA 108R412 #MA 113 019 #MA 123 007 MA 202 001 MA 351 001 MA 502 001 MA 682 001
 MA 108R413 #MA 113 021 #MA 123 010 #MA 202 002 MA 362 001 MA 537 001 MA 715 001
 #MA 109N402 #MA 113 022 #MA 123 011 #MA 213 001 MA 396H451 #MA 537 002 MA 752 001
 MA 112N402 MA 113A020 #MA 123 012 #MA 213 003 MA 399 001 #MA 611 001 MA 761 001
 MA 112N405 MA 113N401 #MA 123 013 #MA 213 006 MA 410G001 MA 616 001 #MA 768 001
 #MA 113 004 #MA 114 011 #MA 123 014 #MA 213 007 MA 411G001 MA 618 001 MA 769 001
 #MA 113 009 MA 114A015 MA 131 001 #MA 213 008

+Added course
 *Changed course
 #Five or fewer vacancies



16 CAMELOT

Lex Tran Bus Service to:

- University of Kentucky
- Kirklevington
- Redding Rd.
- Camelot Dr.
- Whispering Hills
- starts Monday January 11, 1982

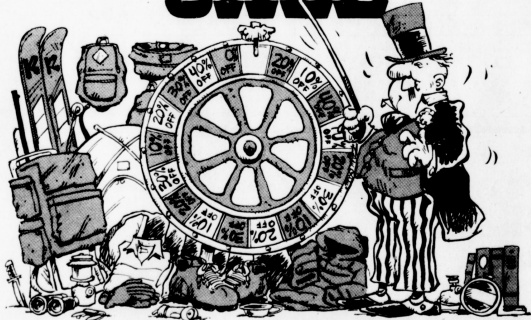
LEXTRAN

For Route and schedule information:

252-4936

Transit Authority of Lexington-Fayette Urban County Government.

**SECOND ANNUAL
 GAMBLER'S
 SALE**



Win up to **50% Off**
 Anything in either store!*

*guns and bows exempt

4 Days Only!

January 14-17

(January 17, Lexington Mall only)

**Phillip Gall
 & Son**

230 West Main Street & Lexington Mall
 Free parking in Rainbow Lot Visa MasterCard American Express accepted

It's Miller time
 at the
**University
 of
 Kentucky**



Go Cats!

Now available in 1/4 barrel.

DISTRIBUTED LOCALLY BY MID-STATE DISTRIBUTING LEXINGTON, KENTUCKY

+92487 MA	109N402	COLLEGE ALGEBRA	3	TR	0730-0845PM	CB	203	STAFF
+92908 MA	113 004	CALCULUS I	4	MTRF	1000-1050AM	CP	387	STAFF
+92495 MA	113 021	CALCULUS I	4	MTRF	0100-0150PM	CP	220	STAFF
+92509 MA	113 022	CALCULUS I	4	MTRF	0200-0250PM	CP	367	STAFF
+92541 MA	123 005	ELE CALC & ITS APPLICS	3	MWF	1000-1050AM	CB	341	STAFF
+92550 MA	123 006	ELE CALC & ITS APPLICS	3	MWF	1200-1250PM	MCV	206	STAFF
+92568 MA	123 007	ELE CALC & ITS APPLICS	3	MWF	0100-0150PM	CP	345	STAFF
+92592 MA	123 010	ELE CALC & ITS APPLICS	3	TR	0800-0915AM	CP	397	STAFF
+92606 MA	123 011	ELE CALC & ITS APPLICS	3	TR	0930-1045AM	CP	208	STAFF
+92614 MA	123 012	ELE CALC & ITS APPLICS	3	TR	1230-0145PM	CP	397	STAFF
+92622 MA	123 013	ELE CALC & ITS APPLICS	3	TR	0200-0315PM	CP	387	STAFF
+92631 MA	123 014	ELE CALC & ITS APPLICS	3	TR	0200-0315PM	CP	267	STAFF
Operations Research								
OR	525 001	OR 616 001	OR 618 001	#OR	624 001			
MIDDLE EAST CIVILIZATION								
ANT 121*	#HIS 511 001	SO 131 001	SO 141 001	SO 231 001	SO 260 001	SO 396 001		
CLA 390N401	HIS 549 001	SO 131N401	SO 141N401	SO 241 001	#SO 325 001	SOC 101*		
*Any open section.								
MILITARY SCIENCE								
MS 102 001	MS 102 007	MS 202 003	MS 221 001	MS 221 004	MS 302 002	MS 342 001		
MS 102 002	MS 202 001	MS 212 004	MS 221 002	MS 221 005	MS 302 003	MS 342 002		
MS 102 005	MS 202 002	MS 202 005	MS 221 003	MS 302 001	#MS 311 001			
PHILOSOPHY								
PHI 100H451	#PHI 120 009	PHI 130N401	+PHI 300N401	#PHI 395 001	PHI 535 001	PHI 630 001		
PHI 100N401	#PHI 120 011	PHI 260 001	PHI 310 001	#PHI 399 001	PHI 537 001	PHI 655 001		
#PHI 120 002	#PHI 120 013	PHI 270 001	#PHI 320 001	PHI 515 001	PHI 545 001	PHI 710 001		
#PHI 120 003	#PHI 120 014	PHI 300A001	PHI 320 002	PHI 516 001	PHI 575 001	#PHI 768 001		
#PHI 120 004	PHI 120N401	PHI 300B002	PHI 350 001	PHI 520 001	PHI 592 001	#PHI 790 001		
#PHI 120 007								
+90280 PHI 300N401	UNDERGRAD SEM: SP ISSUES IN PHILOSOPHY & FEMINISM			3	M	0600-0830PM	CB	215 BENNET
PHYSICS AND ASTRONOMY								
AST 191 001	AST 191 002	AST 192 001	AST 192 002	AST 192N401	AST 193N401	AST 395 001		
PHY 130 001	*PHY 207 002	#PHY 231 008	#PHY 241 005	PHY 361 001	PHY 545 001	PHY 632 001		
PHY 151 001	#PHY 211 001	#PHY 232 001	#PHY 241 006	#PHY 395 001	PHY 546 001	#PHY 715 001		
PHY 152 001	PHY 211 003	#PHY 232 002	+PHY 241 007	PHY 404G001	PHY 548 001	PHY 768 001		
#PHY 201 001	PHY 211 004	#PHY 232 003	#PHY 242 003	PHY 417G001	PHY 549 001	#PHY 769 001		
#PHY 201 002	#PHY 211 005	#PHY 232A009	#PHY 242 004	PHY 520 001	#PHY 555 001	PHY 770 001		
#PHY 203 001	PHY 213 003	#PHY 232H451	PHY 242 005	PHY 524 001	#PHY 567 001	PHY 781 001		
#PHY 203 004	PHY 213 004	#PHY 241 001	PHY 242 006	#PHY 530 001	#PHY 604 001	PHY 790 001		
*PHY 207 001	*PHY 217 002	#PHY 241 004	PHY 242 007	#PHY 535 001	#PHY 611 001	PHY 791 001		
*58530 PHY 207 001	PHYSICS FOR LIFE SCIENCES II DISCUSSION			4	TR	1000-1050AM	CP	153 FLYNN
					MW	0800-0850AM	CP	263 FULKERSON
*58548 PHY 207 002	PHYSICS FOR LIFE SCIENCES II DISCUSSION			4	TR	1000-1050AM	CP	153 FLYNN
					MW	1100-1150AM	CP	267 FULKERSON
*58661 PHY 217 002	PHYSICS FOR LIFE SCIENCES II DISCUSSION LAB			5	TR	1000-1050AM	CP	153 FLYNN
					MW	1100-1150AM	CP	267 FULKERSON
					R	1200-0150PM	CP	167
+92177 PHY 241 007	GEN UNIVERSITY PHY LAB			2	W	0500-0850PM	CP	290 HANAU

+Added course
*Changed course
#Five or fewer vacancies

TWO KEYS



333 S Lime

Says Welcome Back

The no. 1 bar with U.K. and in Lexington is excited about the 1982 Spring Semester. We're proud of our tradition at the 'Keys and you can count on us to maintain our standards!

We're somewhat unique in this area because you are our most important concern and our competitors are constantly watching our lead.

- Great music
- Wednesday Nights (UNBELIEVABLE)
- Popcorn
- Happy Trails
- Watermelons
- The Sno - Ball Festival and Miss Sno - Ball
- Foosball
- Another Mule
- Shrimp-a-la- Keys
- Great Friday Afternoon Happy Hour
- Before and After Basketball Games
- Shuffleboard
- Corn - on - the - cob
- Bar wars
- Champs
- Softball (Men's and Women's)
- Sunshine Extravaganza

So, May we welcome back our old friends & we invite our new ones to find out why we're your favorite spot!

*No, we're not the Student Center Board...
...but we do a lot of things you might not know about*



U K STUDENT ASSOCIATION

On Campus Services

- The UKSA Student Bookstore - Thru Jan. 27 Rm 107, SC.
- Student - Faculty - Staff Phone Directory
- XeroX machine & additional Washers in dorm complex.
- Free legal services.
- Student organization Assistance Fund



In Kentucky

- Member of Student Government Associations of Kentucky
- Lobbying For students' Higher Education concerns in Frankfort
- Intervention in GTE rate case

Coming Up This Semester

- Speaker's Bureau - Featuring Ebony Magazine Editor Lerone Bennett
- UKSA / CKBC Blood Drives
- Brown Bag Forums - Starting Jan. 27
- Funding for the Communicator, minority publication
- Appearance by Russian Debate Team
- Campus night
- Bus service



Join in the FUN

we want you to get involved by serving on a committee there's something for everyone!

- Academic Affairs
- Minority & Third World Affairs
- Political Affairs
- Women's Concerns
- Campus Relations
- Public Relations
- Student Services

Government of the UK Student Body President: Britt Brockman
120 Student Center • 257-3191 • V. President: Bobby Clark

POLITICAL SCIENCE

PS 101 001	PS 101N402	PS 201 007	PS 395 001	PS 470G001	PS 553 001	*PS 752 001
PS 101 003	PS 101N403	PS 201N401	PS 399 001	PS 473G001	PS 580N401	PS 758 001
PS 101 004	PS 105 001	PS 210 001	PS 420G001	PS 487G001	PS 654 001	PS 763 001
PS 101 005	PS 201 001	*PS 235 001	*PS 429 001	PS 489G001	PS 671 001	PS 768 001
PS 101 006	PS 201 002	PS 235 002	PS 430G001	PS 491A001	*PS 674 001	PS 769 001
PS 101 007	PS 201 003	PS 235N401	*PS 442G001	*PS 491B002	*PS 711A001	*PS 776 001
PS 101 008	PS 201 004	PS 240 001	PS 450G001	PS 491C003	PS 711B002	*PS 777 001
PS 101 009	PS 201 005	PS 255 001	PS 461G001	PS 532 001	PS 711C003	PS 795 001
PS 101N401	PS 201 006	PS 255N401	*PS 463G001	PS 538 001	*PS 751 001	

*90859	PS 429 001	GOVT & POLITICS OF SOVIET UNION	3	MWF	1100-1150AM	EGU 211	NELSON
*59919	PS 674 001	PROSEM IN THEORIES INTNTL POL	3	R	0200-0430PM	COM 441	EAST
*59951	PS 751 001	SEMINAR IN METROPOLITICS	3	R	0220-0500PM	CB 207	LYONS
*59960	PS 752 001	PROB IN STATE & LOCAL GOVT	3	T	0220-0500PM	CB 207	ROEDER
*91260	PS 776 001	SEM IN POLITICAL DEVELOPMENT	3		HOURS ARR		COLEMAN
*91278	PS 777 001	RESEARCH PROBS IN INTERNATL REL	3		HOURS ARR		EAST

PSYCHOLOGY

*PSY 100 001	PSY 100 021	PSY 100 039	PSY 305 001	PSY 528 001	PSY 558 001	PSY 6370004
PSY 100 003	PSY 100 022	PSY 100H451	PSY 331N401	*PSY 529 001	PSY 611 001	PSY 705 001
PSY 100 004	PSY 100 023	PSY 100N401	PSY 395 001	PSY 532 001	PSY 620 001	PSY 768 001
PSY 100 006	PSY 100 024	PSY 100N402	PSY 399 001	PSY 532 002	PSY 622 001	PSY 772 001
PSY 100 007	PSY 100 025	*PSY 215 004	PSY 444G002	PSY 533 001	*PSY 627 001	PSY 779 001
PSY 100 008	*PSY 100 027	PSY 215N401	*PSY 444G003	PSY 533 002	PSY 628 001	PSY 780A001
*PSY 100 009	PSY 100 029	*PSY 216 003	PSY 444G004	PSY 533N401	*PSY 632 001	PSY 780B002
PSY 100 013	*PSY 100 030	PSY 223 002	PSY 444G401	PSY 535 001	*PSY 633 001	PSY 780C003
*PSY 100 016	PSY 100 033	*PSY 223 003	PSY 523 001	*PSY 548 001	PSY 637A001	PSY 780D004
PSY 100 017	*PSY 100 036	PSY 223N401	PSY 525 001	*PSY 552 001	PSY 637B002	PSY 781 001
PSY 100 018	*PSY 100 038	PSY 223N402	PSY 526 001	*PSY 553 001	PSY 637C003	*PSY 790 001
PSY 100 020						

*60402	PSY 100 038	INTRODUCTION TO PSYCHOLOGY LAB	4	MWF	0100-0150PM	KAS 213	ROZEMAN
+92720	PSY 216 003	APPLICATIONS OF STAT IN PSY	3	TR	1230-0145PM	FB 211	MARTIN
+92738	PSY 223 003	DEVELOPMENTAL PSYCHOLOGY	3	TR	0430-0545PM	FB 200	NICHOLS
*60747	PSY 529 001	PSYCHOLINGUISTICS	3	TR	1100-1215PM	EH 203	BELMORE
*60836	PSY 553 001	ANIMAL BEHAVIOR LABORATORY	1	R	1100-1250PM	KAS 206	ZENTALL
*60887	PSY 627 001	PROSEM PHYSIOLOG PSY	2	R	0700-0850PM	MDC M505	NONNEMAN/ZOLMAN
*60909	PSY 632 001	CLINICAL METHODOLOGY II	2	W	0400-0630PM	KAS 210	MILLER T
*60917	PSY 633 001	PRACT IN CLIN METH II	2	R	0400-0630PM	KAS 210	MILLER T

RUSSIAN AREA STUDIES

HIS 230 001	*PS 235 001	#50 102 001	SO 102 004	#50 261 001	SO 400 001	SO 462G001
HIS 286 001	PS 235 002	#50 102 002	SO 202 001	SO 304 001	SO 411 001	ECO 4716001
HIS 535 001	PS 235N401	SO 102 003	#50 202 002	SO 395 001	SO 460G001	ECO 4716002
PS 210 001	PS 240 001					

SLAVIC AND ORIENTAL LANGUAGES AND LITERATURES

*50 102 001	SO 131 001	SO 141N401	SO 231 001	#50 261 001	SO 395 001	SO 411 001
*50 102 002	SO 131N401	SO 202 001	SO 241 001	SO 304 001	SO 396 001	SO 460G001
SO 102 003	SO 141 001	#50 202 002	SO 260 001	#50 325 001	SO 400 001	SO 462G001
SO 102 004						

*Added course
*Changed course
#Five or fewer vacancies

U.K. STUDENT CENTER BOARD TRAVEL COMMITTEE PRESENTS

SAIL ABOARD THE Tss Carnival

March 14 - 21, 1982

Ports-of-call
**SAMANA
SAN JUAN
St. THOMAS**

\$544.00 PER PERSON QUAD



SKI WINTER PARK, CO.

March 13 - 20, 1982

\$499.00 PER PERSON QUAD FROM LEXINGTON

7 NIGHTS ACCOMMODATIONS AT BEAVER VILLAGE CONDOMINIUMS

FOR DETAILED BROCHURES, CONTACT:
U. K. STUDENT CENTER BOARD TRAVEL COMMITTEE
TRAVEL CENTER, STUDENT CENTER
TEL: 258-8867



MC ICC LIC 130525F



TELEVISION COURSES Evening Class Program University of Kentucky

DAY STUDENTS MAY ADD TELEVISION COURSES FROM JANUARY 13 THROUGH JANUARY 19 BY FOLLOWING THEIR NORMAL ADD-DROP PROCEDURE.

Each semester hundreds of Kentuckians enroll in a TELEVISION COURSE to work toward a Degree, for professional growth and for personal development. The Evening Class Program is expanding its television course offerings for the 1982 Spring Semester. Television courses combine televised programs (repeated a variety of times), related assignments, examinations and 4-6 class meetings on campus. THE UNIVERSITY OF KENTUCKY EVENING CLASS PROGRAM WILL OFFER THE FOLLOWING TELEVISION COURSES DURING THE 1982 SPRING SEMESTER.

KENTUCKY EDUCATIONAL TELEVISION (KET)

COMPUTER SCIENCE

35483 CS 101N-402 Computer Science I 3 Credits
TV Title: MAKING IT COUNT
W, 6:00-8:30 pm, Classroom Bldg. 242
Blayd
Broadcast Dates: January 16-April 5, 1982
Broadcast Times: Sat. 5:00 pm (ET)/4:00 pm (CT)
Sat. 5:30 pm (ET)/4:30 (CT)
Repeat Broadcasts: Mon. 6:30 pm (ET)/7:30 pm (CT)
Students will meet class for the first time on Wed., Jan. 13th.

PSYCHOLOGY

60453 PSY 100N-402 Introduction to Psychology 4 Credits
TV Title: UNDERSTANDING HUMAN BEHAVIOR
R, 6:00-9:30 pm, Classroom Bldg. 201
Staff
Broadcast Dates: January 17-April 29, 1982
Broadcast Times: Sun. 4:00 pm (ET)/3:00 pm (CT)
Sun. 4:30 pm (ET)/3:30 pm (CT)
Repeat Broadcasts: Wed. 3:30 pm (ET)/2:30 pm (CT)
Thurs. 3:30 pm (ET)/2:30 pm (CT)
Students will meet class for the first time on Thurs., Jan. 14th.

EDUCATION

37281 EDC 610N-401 Discipline And Classroom Management 3 Credits
TV Title: DEALING IN DISCIPLINE
T, 7:00-9:30 pm, Dickey Hall 33
Verble
Broadcast Dates: January 22-April 9, 1982
Broadcast Times: Fri. 6:30 pm (ET)/5:30 pm (CT)
NO REPEATS
Students will meet class for the first time on Tues., Jan. 19th.

38482

EDS 558N-403 Problems in Special Education 3 Credits
TV Title: SIMPLE GIFTS: TEACHING GIFTED AND TALENTED
S, 9:30-12:00 Noon, Dickey Hall 133
Demers
Broadcast Dates: January 18-April 5, 1982
Broadcast Times: Mon. 6:30 pm (ET)/5:30 pm (CT)
NO REPEATS
Students will meet class for the first time on Sat., Jan. 16th.

38474

EDS 558N-402 Problems in Special Education 3 Credits
TV Title: SIMPLE GIFTS: TEACHING GIFTED AND TALENTED
R, 6:30-9:00 pm, Dickey Hall 325
Demers
Broadcast Dates: January 18-April 5, 1982
Broadcast Times: Mon. 6:30 pm (ET)/5:30 pm (CT)
NO REPEATS
Students will meet class for the first time on Thurs., Jan. 14th.

ENGLISH

41459 ENG 161N-401 Introduction to Literature 3 Credits
TV Title: COMMUNICATING THROUGH LITERATURE
R, 6:00-8:30 pm, Classroom Bldg. 214
Hobson
Broadcast Dates: January 17-April 27, 1982
Broadcast Times: Sun. 3:00 pm (ET)/2:00 pm (CT)
Sun. 4:30 pm (ET)/3:30 pm (CT)
Repeat Broadcasts: Mon. 3:30 pm (ET)/2:30 pm (CT)
Tues. 3:30 pm (ET)/2:30 pm (CT)
Students will meet class for the first time on Thurs., Jan. 14th.

TELECAST OF LEXINGTON

Telecast of Lexington subscribers will be able to view programs for all courses, including courses on KET, during the daytime, prime time evenings and weekends. A broadcast schedule will be available for each course prior to the beginning of the semester.

COMMUNITY HEALTH

33472 CH 420N-401 Current Issues in Community Health Education 3 Credits
TV Title: CONTEMPORARY HEALTH ISSUES
T, 6:00-8:30 pm, Health Science Bldg. 214
Parrish
Students will meet class for the first time on Tues., Jan. 19th.

ENGLISH

40053 ENG 101N-403 Freshman Composition 3 Credits
TV Title: WRITING FOR A REASON
S, 9:00-11:30 am, Commerce Bldg. 205
Staff
Students will meet class for the first time on Sat., Jan. 16th.

40061 ENG 101N-404 Freshman Composition 3 Credits
TV Title: WRITING FOR A REASON
M, 6:00-8:30 pm, Classroom Bldg. 209
Staff
Students will meet class for the first time on Mon., Jan. 18th.

42099 ENG 425G-401 Shakespeare Survey 3 Credits
TV Title: SHAKESPEARE
T, 6:00-8:30 pm, Classroom Bldg. 245.
Bryant
Students will meet class for the first time on Tues., Jan. 19th.

PHYSICS AND ASTRONOMY

30180 AST 193N-401 Elementary Astronomy 3 Credits
TV Title: COSMOS
R, 7:30-10:00 pm, Chem-Physics Bldg. 153.
Farland
Students will meet class for the first time on Thurs., Jan. 21st.

SOCIOLOGY

61760 PS 101N-403 American Government 3 Credits
TV Title: AMERICAN GOVERNMENT SURVEY
T, 6:00-8:30 pm, Classroom Bldg. 321.
Conover
Students will meet class for the first time on Tues., Jan. 19th.

EDUCATION

38466 EDS 558N-401 Problems in Special Education 3 Credits
TV Title: TEACHING THE YOUNG HANDICAPPED CHILD
W, 6:30-8:30 pm, Dickey Hall 133
Walery
Students will meet class for the first time on Wed., Jan. 13th.

POLITICAL SCIENCE

59528 SOC 101N-402 Introductory Sociology 3 Credits
TV Title: FOCUS ON SOCIETY
W, 6:00-8:30 pm, Classroom Bldg. 219
Sharon
Students will meet class for the first time on Wed., Jan. 13th.

FAMILY STUDIES

42617 FAM 252N-402 The Individual, Marriage and Family 3 Credits
TV Title: FAMILY PORTRAIT
T, 6:00-8:30 pm, Funkhouser Bldg. 311
Weeks
Students will meet class for the first time on Tues., Jan. 19th.

SOCIAL WORK

64416 SW 580N-401 Topic Seminar in Social Work: Alcohol and Drug 3 Credits
TV Title: LOOSENING THE GRIP
W, 6:00-8:45 pm, Classroom Bldg. 209
Sullivan
Students will meet class for the first time on Wed., Jan. 13th.

All programs may be viewed in the Learning Center, located in the Scott St. Bldg. Monday thru Friday 8:00am-6:30pm Tuesday, Wednesday & Thursday 8:00am-8:30pm

SOCIOLOGY

SOC 101 002	#SOC 152 008	#SOC 354 001	#SOC 437#401	SOC 528 001	SOC 565 001	SOC 775 001
SOC 101 003	#SOC 152 009	#SOC 395 001	SOC 4446001	SOC 531 001	SOC 660 001	#SOC 776 001
SOC 101 004	SOC 152#401	SOC 399 001	#SOC 4446002	SOC 532 001	#SOC 681 001	#SOC 777 001
SOC 101 006	SOC 152#402	SOC 409 001	SOC 4446004	SOC 534 001	SOC 695 001	#SOC 779 001
SOC 101 009	SOC 201 001	SOC 409 003	SOC 4446401	#SOC 546 001	SOC 768 001	#SOC 780 001
SOC 101#401	SOC 220 002	SOC 409#401	SOC 501 001	#SOC 548 001	#SOC 769 001	#SOC 790 001
SOC 101#402	#SOC 303 001	SOC 418 001	SOC 503 001	#SOC 549 001	SOC 772 001	#SOC 792 001
#SOC 152 001	SOC 350 001	*SOC 436 001	SOC 509 001	SOC 551 001	SOC 773 001	#SOC 797 001
#SOC 152 002	SOC 351 001	SOC 436#401	SOC 517#401			

*#92746 SOC 152 009 MODERN SOCIAL PROBLEMS 3 MWF 0800-0850AM CB 212 STAFF
 *#62014 SOC 436 001 SOCIOLOGY OF DEVIANT BEHAVIOR 3 MWF 1200-1250PM FB 214 SLATIN

SPANISH AND ITALIAN LANGUAGES AND LITERATURES

#SPI 101 003	#SPI 102 007	SPI 141 002	#SPI 202 006	SPI 242 003	SPI 399 001	SPI 629 001
#SPI 101 005	#SPI 102 008	#SPI 142 001	SPI 202#001	SPI 292 001	SPI 400 001	SPI 632 001
#SPI 101 006	#SPI 102 009	#SPI 142 004	SPI 202#401	#SPI 310 001	SPI 501 001	SPI 633 001
#SPI 101 007	SPI 102#001	SPI 142 005	#SPI 210 001	#SPI 311 004	SPI 504 001	SPI 649 001
#SPI 101 008	SPI 102#401	SPI 143 001	SPI 213 001	#SPI 311 005	SPI 541 001	SPI 651 001
SPI 101#001	#SPI 111 009	SPI 192 001	#SPI 241 001	#SPI 315 001	SPI 551 001	SPI 768 001
#SPI 102 002	#SPI 111#001	#SPI 192 003	SPI 241 003	SPI 395 001	SPI 566 001	#SPI 769 001
#SPI 102 003	#SPI 112#001	SPI 201#001	#SPI 242 001	SPI 397 001	SPI 612 001	SPI 782 001
#SPI 102 004	SPI 141 001	#SPI 202 005				

*#62944 SPI 111 009 THURSDAY SESSION 0 R 0300-0350PM CB 310 STAFF
 *#62952 SPI 111#001 THURSDAY SESSION LECTURE 0 T 0930-1020AM CB 332 STAFF
 R 0930-1020AM CB 310
 *#63045 SPI 112#001 TUESDAY SESSION LECTURE 0 T 0930-1020AM CB 332 STAFF
 R 0930-1020AM CB 310
 *#92754 SPI 202 006 INTERMED SPAN(SPOKEN APPROACH) 3 MWF 0300-0350PM CB 209 STAFF
 *#92762 SPI 311 004 ADVANCED SPANISH CONVERSATION 1 TBA STAFF
 *#92771 SPI 311 005 ADVANCED SPANISH CONVERSATION 1 TBA STAFF

STATISTICS

+STA 200 004	#STA 291 003	STA 320 001	#STA 570#001	STA 603 001	#STA 671#003	STA 691 001
+STA 200#005	#STA 291 004	STA 370 001	STA 570#002	STA 616 001	#STA 671#004	STA 695 001
+STA 200#006	#STA 291 005	STA 381 001	STA 570#003	STA 624 001	*STA 672 002	STA 704 001
STA 200#451	#STA 291 009	#STA 417#001	STA 570#004	#STA 641 001	STA 675 001	STA 768 001
+STA 200#401	S#A 291#401	STA 422#001	STA 601 001	STA 671#002	#STA 675 002	STA 769 001
STA 200#402	STA 291#402	STA 525 001				

+#92801 STA 200 004 STATISTICS: FORCE HUMAN JGDMT 3 MWF 0200-0250PM CB 212 STAFF
 *#92819 STA 200#005 STATISTICS: FORCE HUMAN JGDMT 3 TR 0800-0915AM CB 234 STAFF
 *#92827 STA 200#006 STATISTICS: FORCE HUMAN JGDMT 3 TR 0330-0445PM CB 245 STAFF
 *#92835 STA 641 001 DEV & ANAL VAR COMP MODELS 3 TR 0200-0315PM CB 333 ANDERSON
 *#64041 STA 672 002 DESIGN & ANAL OF EXPR LAB 2 MWF 1200-1250PM CB 234 RUST
 T 1230-0220PM CB 307

COLLEGE OF BUSINESS AND ECONOMICS

ACCOUNTING

ACC 201 001	ACC 202 001	ACC 202 012	ACC 302 003	ACC 401#001	ACC 417#003	ACC 619 001
ACC 201 005	ACC 202 002	ACC 202#401	ACC 302 006	ACC 403#003	ACC 419 001	ACC 619#002
ACC 201 006	ACC 202 003	ACC 202#402	ACC 302#401	*ACC 403#004	#ACC 517 001	ACC 628 001
ACC 201 007	ACC 202 006	ACC 301 001	ACC 324 001	ACC 408#001	ACC 518 001	ACC 701 001
ACC 201 008	ACC 202 007	ACC 301 004	ACC 324 002	ACC 408#004	ACC 527 001	ACC 707 001
ACC 201 009	ACC 202 008	*ACC 301 005	ACC 324 004	ACC 408#401	ACC 537 001	ACC 708 001
ACC 201#401	ACC 202 009	ACC 302 001	ACC 395 001	ACC 416#001	ACC 608 001	ACC 795 001
ACC 201#402	ACC 202 011	ACC 302 002	ACC 395#002	#ACC 417#002		

+#92347 ACC 301 005 INTERMEDIATE ACCOUNTING I 3 MWF 0100-0150PM COM 327 CHEN
 *#92339 ACC 403#004 AUDITING 3 MWF 1000-1050AM COM 220 NUNLEY

BUSINESS ADMINISTRATION

BA 330 001	BA 341#401	BA 352 001	#BA 537 001	BA 636 001	BA 655 001	BA 750 001
BA 330 002	BA 345#401	BA 395 001	*BA 584 001	*BA 639 001	BA 695 001	BA 762 001
*BA 331 002	BA 350 001	#BA 433 001	*BA 585 001	BA 642 001	BA 731 001	BA 768 001
BA 335#401	BA 350 003	BA 435 002	#BA 630#401	BA 646 001	*BA 736 001	BA 769 001
BA 336#401	#BA 351 001	BA 452 001	BA 632 001	BA 650 001	BA 737 001	BA 781 001
BA 340#401	BA 351#401	BA 456#001	BA 635#401	BA 652 001	BA 746 001	

+92355 BA 331 002 RETAIL & DISTRIBUTION MGMT 3 TR 0330-0445PM COM 108 BLANCHETTE
 *#91031 BA 584 001 FINANCIAL MARKETS & INST 3 TR 0330-0445PM COM 222 MASTEN
 *#91049 BA 585 001 BANK MANAGEMENT 3 TR 1230-0145PM CB 306 MASTEN
 *#31038 BA 639 001 BUSINESS POLICY AND STRATEGY 3 TR 1100-1215PM MH 205 MARINO
 *#91375 BA 736 001 ORGANIZATIONS & EXTERNAL SYS 3 HOURS ARR COM 331C GIBSON

ECONOMICS

ECO 160 001	ECO 261 008	ECO 391 003	ECO 460 002	ECO 477#006	ECO 485#004	ECO 763 001
ECO 260 001	ECO 261 009	ECO 391 004	ECO 464#001	ECO 477#401	ECO 485#401	ECO 769 001
ECO 260 004	ECO 261#401	ECO 391 007	ECO 471#001	#ECO 479#001	ECO 487#001	ECO 771 001
ECO 260 005	ECO 261#402	ECO 391 008	ECO 471#002	ECO 481#001	ECO 488#001	ECO 776 001
ECO 260 009	ECO 365 001	ECO 391#401	ECO 473#001	ECO 485#001	ECO 660 001	ECO 796#401
ECO 260 010	ECO 377 001	ECO 395 001	ECO 477#001	#ECO 485#002	ECO 687 001	ECO 796#002
ECO 261 004	ECO 391 001	ECO 460 001	ECO 477#005	ECO 485#003	ECO 762 001	ECO 797 001
ECO 281 006						

COLLEGE OF COMMUNICATIONS

COMMUNICATION

COM 101 001	COM 101 009	COM 395 001	#COM 551 003	#COM 665#401	COM 731 001	COM 769 001
COM 101 004	COM 101#401	COM 550#002	#COM 614 001	COM 700 001	COM 741#401	COM 781 001
COM 101 005	COM 101#402	#COM 551 002	COM 651 001	COM 730#401	COM 768 001	COM 790 001
COM 101 006						

Speech

#SP 181 002	#SP 181 009	#SP 181 012	#SP 181 017	SP 181#402	SP 184 001	SP 284 001
#SP 181 008	#SP 181 010	#SP 181 016	SP 181#401	SP 181#403	SP 283 001	SP 780 001

SCHOOL OF JOURNALISM

JOU 101 001	JOU 204 001	#JOU 395 001	JOU 503 001	#JOU 539 001	JOU 567 001	#JOU 599#001
#JOU 201 001	#JOU 204 004	JOU 487 001	JOU 531 001	JOU 541 002	#JOU 579 001	#JOU 599#002
JOU 203 003	JOU 305 001	JOU 501 002	JOU 535 001	JOU 543 001	#JOU 579 002	
JOU 203 004	JOU 361 001	#JOU 501 003				

TELECOMMUNICATIONS

TEL 395 001	TEL 505 001	#TEL 507#401	#TEL 510 001	TEL 530 001
-------------	-------------	--------------	--------------	-------------

COLLEGE OF DENTISTRY

COMMUNITY DENTISTRY

#CDE 655 001	CDE 830 001	#CDE 850#001	#CDE 850#002	#CDE 850#003	#CDE 850#004	CDE 850#005
CDE 810 001						

CONJOINT DENTAL SERVICES

#CDS 612 001	CDS 810 001	CDS 820 001	CDS 830 001	CDS 840#002	CDS 847 001	CDS 849 001
#CDS 631 001	CDS 811 001	CDS 828 001	CDS 840#001	CDS 846 001	CDS 848 001	

ENDODONTICS

END 821 001	END 830 001	END 831 001	END 841 001	#END 850#001
-------------	-------------	-------------	-------------	--------------

*Added course
 #Changed course
 #Five or fewer vacancies

dawahares
HUGE ANNUAL WINTER SHOE AND BOOT CLEARANCE, UNDERWAY NOW!!!

LADIE'S SHOES ON SALE RACKS AT THESE UNBELIEVABLE SAVINGS:

#18.99 BROWNSHIRT, CANON, TIG TAC TOE, 8 WEST, AUSTIN..... ORIGINALLY TO \$28.99
 #18.99 ANTYMAGE, 9 WEST, COLORADO..... ORIGINALLY TO \$28.99
 #28.99 FOOTWIND, DEXTER, NIKE, HOPKINSVILLE, S.A.S..... ORIGINALLY TO \$42.99
 #28.99 AUSTIN, S.A.S., 9 WEST, DASH, DEXTER, HOPKINSVILLE..... ORIGINALLY TO \$42.99

LADIE'S BOOTS ON SALE FROM THESE FAMOUS MANUFACTURERS:

SHOOL, THE ENTIRE STOCK, \$18.99..... ORIGINALLY TO \$62.99
 DEXTER, THE ENTIRE STOCK, \$8.99..... ORIGINALLY TO \$47.99
 FIVE, THE ENTIRE STOCK, \$8.99..... ORIGINALLY TO \$17.99
 HOPKIN & HOPKIN, \$8.99..... ORIGINALLY TO \$18.99
 SALLY UP, THE ENTIRE STOCK, \$22.99..... ORIGINALLY TO \$38.99

MEN'S SHOES ON SALE RACKS, ALL CURRENT STYLES & FAMOUS BRANDS:

\$28.99 - DEXTER, NIKE, LEVIS FOR FEET, CASUAL & ATHLETIC STYLES..... ORIGINALLY TO \$48.99
 \$28.99 - FREEMAN, FLOURSHERA, DEXTER, DRESS & CASUAL STYLES..... ORIGINALLY TO \$48.99
 \$28.99 - FLOURSHERA, SALLY, FREEMAN, DRESS STYLES..... ORIGINALLY TO \$118.99

MEN'S BOOTS ON SALE FROM THESE FAMOUS MANUFACTURERS:

FRYE, HOCOMA, JUSTIN, DURANGO, \$68.99..... ORIGINALLY TO \$118.99
 DEXTER, DUNGO, \$48.99..... ORIGINALLY TO \$68.99
 LEVIS FOR FEET, DUNGO, \$48.99..... ORIGINALLY TO \$68.99

THESE VALUES & MUCH MORE NOW AT ALL LOCATIONS

dawahares
 GARDENSHIRE • FAYETTE MALL • LEXINGTON MALL

Start the Semester out RIGHT!!

at

JOE BOLOGNA'S

HOME OF THE THICK SICILIAN - STYLE PIZZA

Corner Of Maxwell & Limestone
 Open Fri. & Sat. until 2 a.m.
 Weekdays 11 a.m. - 12 p.m.
 Sundays 3 p.m. - 11 p.m.

Carry-out Phone 252-4933

SUPERCOMPO 1100

SAVE '161⁰⁰ Now **\$499⁰⁰**

Sansui

50 Watt
Hi Fi System
SAVE '161⁰⁰

COMPONENT	DESCRIPTION
R-5	AM/FM Receiver: 25 watt(s) @ 8 ohms, THD 0.08%, 40-20KHz, frequency, LED source indicator, speaker system, auto-LED signal strength indicator.
TR-025	Auto-Return P.L.S. Turntable: wow & flutter 0.02%, (WRMS) rumble - 60dB (DIN B), fine speed adj. ± 3% (front panel control), strobe, aluminum alloy die cast platter, balanced statically balanced tonearm, dust cover.
D-05MS	Metal-Compatible Cassette Deck: wow & flutter 0.07% (WRMS), 1/4" response 30:15kHz - 500 S/N 88dB (w/ Dolby), LED peak level meter. OPTIONAL EXTRA
S-37	High Efficiency Acoustic Suspension: Two-way, speaker system, 20 watt(s) (max), input power, 60ohms impedance @ 1kHz, sensitivity 91dB/W SPL, freq response 30:22kHz 10:100:10
DK-65	Audio Cabinet: Walnut grain finish, dual glass doors, record storage, 18" H x 29" W x 14" D

List 299⁰⁰ **\$249⁰⁰**

PIONEER



KE-5100 An in-dash digital cassette deck with quartz electronic AM-FM stereo tuner, Supertuner II 15 station (10 FM & 5 AM) electronic preset "feather touch" pushbutton tuning, Accurate quartz PLL tuning, Automatic seek scan tuning, Built-in clock with clock button, Digital time frequency display with 3-digit green LED, Double diffusion MOS FET front end, Built-in P.N.S. noise suppression, FM auto mono and local scan switch, Parallel fader control, Tape play indicator, Locking fast forward and rewind, Automatic replay after rewind, Automatic eject, Loudness switch.

Reg. 169⁹⁵
List
Returb's **\$88⁰⁰**



TP-900 Under-dash 8-track with Supertuner* FM stereo, Loudness, Stereo/mono switch, Muting, Separate bass, treble and balance. One year limited

Reg. 179⁹⁵ var. **CAR STEREO & SPEAKERS**
\$99⁰⁰ INSTALLED

IN YOUR CAR* Your Choice

Price Includes Stereo - 2 Speakers - 4 Labor to Properly Install



CAR CASSETTE STEREO PLAYER
with
AM/FM/MPX RADIO
CAR RADIO & SOUND SYSTEM SUPER MARKET

Options To Choose From:
By: 1. Equalizer
2. Auto Reversal
3. Auto Memory
4. Auto Scan
5. Auto Mute
6. Auto Repeat
7. Auto Hold
8. Auto Eject
9. Auto Power Off
10. Auto Lock
11. Auto Reset
12. Auto Stop
13. Auto Reverse
14. Auto Repeat
15. Auto Hold
16. Auto Eject
17. Auto Power Off
18. Auto Lock
19. Auto Reset
20. Auto Stop

STEREO
warehouse

1040
New Circle
Across from
Big Bull
New Center
Pike

Open
10 to 8
10 to 5 Sat
255-4526

The Kentucky Kernel



Independent Since 1972

ORAL BIOLOGY

OB1 814 001 OB1 816 001 OB1 818 001 OB1 820 001 OB1 824 001 OB1 830 001 #OB1 8508001

ORAL DIAGNOSIS AND ORAL MEDICINE

ODM 820 001 ODM 821 001 ODM 830 001 ODM 831 001 ODM 841 001 ODM 850A001 ODM 8508002

ORAL PATHOLOGY

OPT 820 001 OPT 850A001

ORAL AND MAXILLOFACIAL SURGERY

OSG 820 001 OSG 830 001 OSG 831 001 OSG 841 001 #OSG 850A001

ORTHODONTICS

#ORT 700 001 ORT 820 001 ORT 831 001 ORT 841 001

PEDIATRIC DENTISTRY

PDD 820 001 PDD 831 001 PDD 841 001 PDD 850C001

PERIODONTICS

#PER 626 001 #PER 770 001 #PER 776 001 PER 811 001 PER 821 001 PER 831 001 #PER 850C001
#PER 661 001 #PER 772 001 #PER 790 001 PER 820 001 PER 830 001 PER 841 001 PER 850D002
#PER 768 001 #PER 774 001 PER 810 001

PROSTHODONTICS

PRO 820 001 PRO 821 001 PRO 822 001 PRO 831 001 PRO 841 001 PRO 850A001

RESTORATIVE DENTISTRY

RSD 810 001 RSD 814 001 RSD 824 001 RSD 834 001 RSD 841 001 RSD 850A001 RSD 8508002
RSD 812 001 RSD 821 001 RSD 831 001

COLLEGE OF EDUCATION

EDU 203 004 EDU 203 006 EDU 203 007 #EDU 203 008 EDU 300 001

*Added course
*Changed course
#Five or fewer vacancies

The first thing we do is listen.



Students Style Prices \$11.50 & up

There's more to a hairstyle than wash, cut and dry. The most important thing we do is listen. Once we understand your needs, our highly-trained professionals can turn your hair into a beautiful statement of your lifestyle. The first thing we do do is listen... the last thing we'd ever do is let you down.

278-7481
1641 Nicholasville Rd.
Next door to Dominos Pizza



WELCOME BACK ENGINEERING, ARCHITECT, AND GRAPHIC ART STUDENTS

- Student Drawing Tables
- Drawing sets
- Compass Sets
- Clearprint, Chartpak
- Engineering Supplies and Equipment

TRANSYLVANIA COMPANY



1512 Colesbury Circle
P O Box 11278
Lexington, Kentucky
40574

293-2661

The Gold Shack

Buying Gold and Silver

STUDENTS: NEED EXTRA CASH??

We Need Class Rings NOW

335 New Circle Rd.
Next to White Castle
299-0713

HAND-E HOME Hardware And Lumber Center

Campus Headquarters For Lumber and Hardware

Shelving For Stereos, Books, TV's Shelf Brackets & Standards

Lumber and Plywood Cut To Length At No Extra Cost

10% off Month of Jan. with Student ID. Except sale items.

End of Moore Drive Behind Stake & Ale **M-F 8-7 \$ 8-6 276-4432**

ADMINISTRATION AND SUPERVISION

EDA 601 001 EDA 603 001 EDA 634 001 EDA 635 001 EDA 639 001 #EDA 769 001 #EDA 785 001

CURRICULUM AND INSTRUCTION

#EDC 317 001 EDC 333B002 #EDC 354 001 #EDC 377B002 EDC 544 001 EDC 641 001 #EDC 768 001
 EDC 317 002 #EDC 337 001 #EDC 355A001 EDC 411 001 EDC 545 001 EDC 643 001 #EDC 769 001
 #EDC 317 003 EDC 338 001 EDC 355B002 #EDC 501 001 EDC 549 001 EDC 661 001 EDC 777A001
 #EDC 324 002 EDC 339 001 #EDC 356A001 *EDC 514 001 #EDC 576 001 #EDC 662 001 EDC 777B002
 EDC 325 001 #EDC 342 001 #EDC 356B002 EDC 522 001 EDC 607 001 EDC 670 001 #EDC 780 001
 EDC 327 001 #EDC 344 003 EDC 357A001 EDC 525 001 EDC 608 001 EDC 712 001 #EDC 781 001
 EDC 330 002 #EDC 353A001 #EDC 357B002 #EDC 534 001 EDC 610N401 EDC 732 001 #EDC 790 001
 EDC 330 003 #EDC 353B002 #EDC 377A001 #EDC 540 001 #EDC 620 001 #EDC 740 001 #EDC 791 001
 #EDC 333A001

+92312 EDC 344 003 PRINS & TECHS OF TCHG SEC SCH 3 MWF 0900-0950AM DH 353 TAYLOR

*37192 EDC 514 001 TESL MATERIALS AND METHODS 3 MWF 1000-1050AM FB 124 HUDAK

+92916 EDC 540 001 PROBLEMS IN TEACHING READING 3 TR 0400-0515PM DH 323 NACKE

+92142 EDC 576 001 MOD ED PROBS: FLD EXP ELE CONV 3 HOURS ARR TEB 128 SMITH

+92134 EDC 662 001 INT LRN EXP EARLY CHLDHD ED 2 M 0600-0830PM DH 349 BENNINGA

SOCIAL AND PHILOSOPHICAL STUDIES

#EDF 301 001 EDF 301I008 EDF 532 001 EDF 645 001 EDF 652 001 EDF 663 001 #EDF 769 001
 #EDF 301 005 EDF 395 001 EDF 643 001 EDF 646 001 EDF 654 001 #EDF 768 001 #EDF 785 001
 #EDF 301 007

HEALTH, PHYSICAL EDUCATION AND RECREATION

HPR 101 001 HPR 107 007 HPR 115B002 HPR 157 001 HPR 344 001 *#HPR 391 001 HPR 573 001
 HPR 103 001 HPR 107 008 HPR 116 001 HPR 159 001 HPR 360 001 HPR 395 001 HPR 577A001
 #HPR 104 001 HPR 107 009 HPR 118 001 HPR 161 001 HPR 360 002 HPR 408 001 HPR 577B002
 #HPR 106 001 HPR 107 010 HPR 125 001 HPR 170 001 #HPR 360C003 HPR 420 001 HPR 579 001
 HPR 106 002 #HPR 107K011 HPR 126 001 HPR 180 001 HPR 360D004 HPR 430 001 HPR 610 001
 HPR 106 004 HPR 110 001 #HPR 126 002 HPR 182 001 HPR 361 001 #HPR 445 001 HPR 620 001
 HPR 106A003 #HPR 111 001 HPR 132 001 #HPR 220 001 HPR 369 001 HPR 478 001 HPR 621 001
 HPR 106A005 HPR 112 001 #HPR 134 001 HPR 244 001 HPR 370 001 HPR 509A001 HPR 676 001
 HPR 106A006 HPR 114 001 #HPR 143 001 HPR 280 001 HPR 371 001 #HPR 509B002 HPR 694 001
 HPR 107 001 HPR 114 002 #HPR 144 001 #HPR 286N401 HPR 374 001 HPR 535 001 HPR 695 001
 HPR 107 002 HPR 114 003 HPR 147 001 #HPR 286A002 #HPR 379 002 HPR 547 001 HPR 696 001
 HPR 107 003 HPR 114 004 #HPR 152 001 HPR 291 001 HPR 381 001 HPR 560 001 HPR 768 001
 #HPR 107 004 #HPR 114 005 HPR 153 001 HPR 307 001 #HPR 386 001 #HPR 570 001 HPR 770 001
 HPR 107 005 HPR 114 006 HPR 155 001 HPR 323 001 #HPR 388N401 HPR 572 001 HPR 762 001
 HPR 107 006 HPR 114 007 HPR 156 001 HPR 330 001

*#48364 HPR 391 001 THEATER DANCE (JAZZ) 2 MW 0330-0500PM BH U STUDIO WISPE

*Added course
 *Changed course
 #Five or fewer vacancies

Kernel

10th

Anniversary

Edition:

Coming

Jan. 19



Prices Good thru. Sat 1/16/82

Open 7 Days A week

ALL SCHOOL SUPPLIES 25% OFF



Blatz case loose cans 24 12oz. cans

\$5.49



Stroh's case loose cans 24 12oz. cans

\$7.99

North Park Shopping Ctr. 255-8577

445 Southland Drive 277-7146



The Best Pizza and Sandwiches in town (HONEST)

99¢ PIZZA

PIZZA EATING COUPON

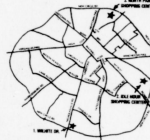
Buy any large, medium or small size original pizza and get the next smaller same style pizza with equal number of ingredients for 99¢.

Not valid with any other offer. Valid Thru. January 30, 1982

Groups We Offer 10% Discounts for your parties, please reserve 72 hours in advance.

Serving You At 1. 2631 Wilhite Dr. Ph: 276-5448
 3 Convenient Locations: 2. Idlehour Shopping Center Ph: 266-1172

3. North Park Shopping Center Ph: 255-9603



HAPPY HOUR!

1/2 Price Beverage

with purchase of any entree. You can enjoy 1/2 price mug or pitcher prices ALL NIGHT LONG From 9 p.m. until close

**Save 25% On USED Books
 Your
 University Book Store**

OPEN 8 - 7

Jan 11 & 12

OPEN 8 - 9

Jan 13 & 14

OPEN Saturday

January 16th - 9 - 5

Last Day To Return Textbooks January 22, 1982

HIGHER EDUCATION

EDH 719 001 #EDH 768 001 #EDH 769 001 EDH 7988002

EDUCATIONAL AND COUNSELING PSYCHOLOGY

#EDP 202 001 EDP 522 001 EDP 611 001 EDP 659 001 EDP 675 001 #EDP 708A001 EDP 768 001
 #EDP 202 002 EDP 548 001 #EDP 649 001 #EDP 650 001 EDP 683A001 #EDP 708B002 #EDP 769 001
 EDP 202 005 EDP 603 001 EDP 652 001 #EDP 670 001 #EDP 683B002 EDP 708C003 #EDP 777 001
 EDP 202 006 EDP 605 001 EDP 658A001 #EDP 671 001 EDP 701 001 EDP 765 001 EDP 782 001
 EDP 202 007 *EDP 605B002

*37915 EDP 605B002 INTRODUCTION TO COUNSELING 3 R 0630-0900PM TEB 122 RAVITZ

*38113 EDP 683B002 TOPS COUNS PSY: CANCER COUNS 2-3 HOURS ARR 917 S LIME REMER R

SPECIAL EDUCATION

EDS 250 001 EDS 395 001 EDS 518 001 EDS 558A001 EDS 601 001 #EDS 657 001 *EDS 674 001
 EDS 358 001 EDS 510 001 EDS 528 001 EDS 558A002 EDS 610 001 EDS 657 002 EDS 720 001
 #EDS 359 001 #EDS 511 001 EDS 529 001 EDS 558A003 EDS 611 001 EDS 657 003 #EDS 721 001
 EDS 360 001 #EDS 512 001 EDS 530 001 EDS 587 001 #EDS 612 001 EDS 658 001 #EDS 731 001
 EDS 375 001 EDS 513 001 EDS 541 001 #EDS 589 001 EDS 621 001 EDS 659A001 EDS 768 001
 EDS 380 001 EDS 514 001 EDS 547 001 #EDS 591 001 EDS 630 001 EDS 659B002 #EDS 769 001
 #EDS 383 001 EDS 515 001 #EDS 549 001 EDS 592 001 EDS 631 001 EDS 673 001 EDS 789 001
 EDS 384 001 #EDS 516 001 EDS 558 001 EDS 600 001 #EDS 632 001

*38695 EDS 674 001 DISORDERS OF FLUENCY 3 T 0530-0800PM TEB 219 CULATTA R

VOCATIONAL EDUCATION

#EDV 210 001 EDV 393 001 *EDV 540N401 EDV 586 001 EDV 685 001 #EDV 769 001 EDV 779C003
 #EDV 352 001 EDV 513 001 EDV 580 001 EDV 588 001 EDV 695 001 EDV 779 001 EDV 789 001
 #EDV 362 001 EDV 514 001 EDV 583 001 EDV 678 001 EDV 768 001 EDV 779B002 EDV 799 001
 EDV 370 001 EDV 537 001

*38954 EDV 540N401 SUPV STU TCHG IN IND EDU 2 W 0600-0740PM DH 33 MCDOWELL

Industrial Education

#IND 222 001 #IND 226 001 #IND 228 001 #IND 525 001

Business and Office Education

#BOE 113 001 BOE 117N401 BOE 209 001 #BOE 219 001 BOE 301 001 BOE 303 001 BOE 519 001
 #BOE 113N401 BOE 118 001 BOE 215 001 BOE 219 002 BOE 302 001 #BOE 395 001 #BOE 556 001
 #BOE 117 002 BOE 118 002

COLLEGE OF ENGINEERING

EGR 399 001

AGRICULTURAL ENGINEERING

AEN 406G001 #AEN 437G001 AEN 505 001 AEN 568 001 AEN 660 001 AEN 768 001 AEN 775 001
 AEN 417G001 AEN 450 001 AEN 525 001 AEN 648 001 AEN 750 001 AEN 769 001 AEN 795 001

CHEMICAL ENGINEERING

CME 002 001 #CME 395 001 CME 422 002 CME 570 001 CME 621 001 CME 769 001 CME 780 001
 CME 006 001 CME 395A002 CME 462 001 #CME 580 001 CME 650 001 CME 771 001 *CME 780A002
 CME 008 001 CME 412 001 CME 552 001 CME 615 001 CME 768 001

*#34819 CME 780A002 SPEC PROBS IN CHEM ENGR 3 TR 0930-1045AM AH 216D RAY

CIVIL ENGINEERING

#CE 100 003 *#CE 340 001 #CE 425G003 CE 519N401 *#CE 553 001 CE 623 001 CE 681 001
 CE 100 004 *#CE 351 002 #CE 425G004 CE 523 001 CE 554 001 CE 626 001 CE 691 001
 CE 100 005 *#CE 355 001 CE 482 001 CE 482 001 *#CE 555 002 *#CE 628 001 CE 768 001
 #CE 101 001 #CE 355 002 CE 483 001 CE 529 001 #CE 559 001 CE 639 001 #CE 769 001
 *#CE 301 002 *#CE 371 002 #CE 487G001 CE 543 001 CE 599A002 CE 652 001 CE 780 001
 #CE 330 003 CE 380 002 #CE 492G001 #CE 550 001 CE 599N401 #CE 664 001 CE 790 001
 CE 330 004 #CE 395 001

*#32981 CE 301 002 CIVIL ENGINEERING MATERIALS I 2 T 1230-0145PM AH 216B ROSE
 LAB R 0200-0350PM KTRB

*#33022 CE 340 001 TRANSPORTATION ENGINEERING 3 TR 0930-1045AM AH 216C DEACON

*#92231 CE 351 002 HYDRAULIC APPLIC & EXPERIMENTS 2 T 0200-0250PM AH 257 KAO
 LAB R 0200-0350PM AH 111

*33049 CE 355 001 WATER QUALITY ENGINEERING 3 TR 0800-0915AM AH 253 LAUDERDALE

*33073 CE 371 002 SEMINAR 1 M 0400-0550PM AH 255 CHECKS/
 GORMAN

*#92193 CE 425G003 SOIL MECHANICS 3 TR 1100-1150AM AH 216C STAFF
 LAB W 0200-0450PM DVT 201

*#92207 CE 425G004 SOIL MECHANICS 3 TR 1100-1150AM AH 216C STAFF
 LAB F 0200-0450PM DVT 201

*#33154 CE 487G001 STEEL STRUCTURES 3 MMF 0100-0150PM AH 265 WANG

*#33171 CE 492G001 REINFORCED CONCRETE 3 MMF 1200-1250PM AH 215A ADAMS

*#33243 CE 553 001 HYDROLOGY 3 MMF 1100-1150AM AH 253 KAVVAS

*#90981 CE 555 002 ENGINEERING ECONOMY 3 MW 0600-0715PM AH 215A HOUSE

*#90298 CE 559 001 WATER QUAL CONTROL FACIL DESIGN 3 MMF 0800-0850AM AH 267 LAUDERDALE

*#33324 CE 628 001 ADV GEOTECHNICAL ENGR 3 TR 0800-0915AM DVT 201 HARDIN

*#33359 CE 664 001 FUND WATER QUAL CONT II 3 MMF 1000-1050AM AH 111 STERLING

ELECTRICAL ENGINEERING

#EE 211 002 EE 395 001 EE 461G001 EE 480G002 EE 562 001 EE 595 001 EE 686 001
 #EE 221 001 EE 395A002 #EE 462G001 #EE 512 001 EE 562 002 EE 602 001 EE 768 001
 #EE 305 002 #EE 403G001 #EE 462G002 EE 517 001 EE 567 001 EE 614 001 EE 769 001
 EE 305 003 #EE 415G001 EE 467G001 EE 523 001 EE 581 001 EE 629 001 EE 771 001
 EE 306A002 #EE 416G001 #EE 468G001 EE 538 001 EE 583 001 EE 666 001 EE 783 001
 EE 371 002 #EE 420G002 #EE 471G001

*#39128 EE 221 001 CIRCUITS II LECTURE 3 MW 0800-0850AM CB 220 LEON
 F 0800-0850AM AH 257

*#39276 EE 415G001 ELECTROMECHANICS I 3 MMF 1200-1250PM FB 306 CATHEY

*#39365 EE 468G001 FIELDS AND WAVES 3 TR 0800-0915AM AH 216B HERRICK

*#39403 EE 512 001 DIGITAL COMMUNICATION SYSTEMS 3 MMF 0100-0150PM AH 215A DYER

*Added course
 *Changed course
 #Five or fewer vacancies

University of Kentucky
campus map

"If we were any closer to campus they would be holding classes here and nobody wants that!"

Why rent when you can own?

Woodland Studios
 Condominium Residences
 in the University New Neighborhood

Features:
 Private Parking Lot • Security Gate • Wall to Wall Carpet
 Modern Appliances • Air Conditioning • Laundry Facilities

The Studio 1 Bath

\$26,000
price subject to change

For More Information Contact:
 Ralph A. Ruschell, Inc., Real Estate
 562 Woodland Avenue, Lexington, Kentucky 40508
 (606) 252-4053



CHARGE IT!

The Kernel now accepts
Classified advertising by telephone.
Use your Mastercharge or Visa card
to charge your Classified ad.



258-4646

All classified advertising
must be paid before
insertion by cash,
check or bank card.

THE KENTUCKY KERNEL, Monday, January 11, 1982-11

ENGINEERING MECHANICS

EM 221 001	EM 221 005	#EM 303 001	#EM 303 004	EM 651 001	#EM 760 001	EM 769 001
#EM 221 004	#EM 302 003	#EM 303 003	EM 646 001	EM 653 001	EM 768 001	EM 760 001

+91251 EM 760 001 RESEARCH PROJECTS IN EM 0 HOURS ARR AH 467 STAFF

MECHANICAL ENGINEERING

ME 220 001	+#ME 310 008	#ME 330 002	ME 371 002	ME 529 001	ME 627 001	ME 663 001
ME 220 002	ME 311 002	ME 330 004	ME 380 001	ME 563 001	ME 631 001	ME 664 001
ME 220 003	#ME 312 001	#ME 343 001	ME 395 001	ME 568 001	ME 640 001	#ME 768 001
ME 220 005	ME 321 002	+ME 344 002	#ME 475G001	ME 583 001	ME 642 001	ME 769 001
+#ME 310 006	ME 325 003	ME 347 001	ME 480G001	ME 621 001	ME 647 001	+#ME 783 001
+#ME 310 007	#ME 330 001	ME 366 001	ME 515 001	ME 625 001		

+92258 ME 310 006 ENGINEERING EXPERIMENTATION I 3 TR 1000-1050AM AH 216B KNAPP LAB T 0300-0450PM AH 145

+92266 ME 310 007 ENGINEERING EXPERIMENTATION I 3 TR 1000-1050AM AH 216B KNAPP LAB W 0300-0450PM AH 145

+92240 ME 310 008 ENGINEERING EXPERIMENTATION I 3 TR 1000-1050AM AH 216B KNAPP LAB R 0300-0450PM AH 145

+92223 ME 344 002 MECHANICAL DESIGN 3 MWF 1000-1050AM AH 215A STAFF

*52175 ME 631 001 FLUID DYNAMICS II 3 TR 1230-0145PM AH 267 SINGH

+990867 ME 783 001 TOPS ADV SYSTEMS IN TECHNOLOGY 3 TBA BHAGAT

METALLURGICAL ENGINEERING AND MATERIALS SCIENCE

MET 201 002	MET 314 001	MET 395B002	MET 451 001	#MET 552 001	MET 661 001	MET 769 001
MET 201 003	MET 362 001	*MET 412 002	#MET 506 001	MET 599N401	MET 666 001	MET 771 001
MET 201 004	MET 395 001	MET 425 001	MET 538 001	+#MET 636 001	MET 768 001	MET 781 001
MET 303 001						

*52361 MET 412 002 ELEC PROPS OF MATERIAL 3 TR 0800-0915AM AH 215A STAFF

+990875 MET 636 001 DISLOCATION THEORY 3 TR 0200-0315PM AH 267 GILLIS

MINING ENGINEERING

MIN 121 001	MIN 322 002	*MIN 341 001	MIN 395 001	+MIN 551 001	MIN 563 001	#MIN 768 001
MIN 222 001	MIN 332 001	*MIN 371 001	MIN 451G001	MIN 562 001	MIN 572 001	#MIN 780 001
MIN 322 001						

+Added course
*Changed course
#Five or fewer vacancies

ADD Sam Bowie, DROP North Carolina

We wrote the book on free delivery...

...and it's been a best seller for over 20 years. The story? It begins with your phone call and ends at your door with a hot, delicious pizza delivered in 30 minutes or less.

Dominio's Pizza is critically acclaimed as the #1 source for fast, free delivery. Check us out.

Hours:
11:00 am - 1:00 am Sun - Thurs
11:00 am - 2:00 am Fri - Sat
Fast, Free Delivery
9 Lexington locations to serve you

Our drivers carry less than \$10.00. Limited delivery area. We use only 100% real dairy cheese.

©1981 Dominio's Pizza, Inc.



a tough pill to swallow

IF YOU DON'T PAY THE \$25 SPRING SEMESTER HEALTH FEE, THE COST OF JUST ONE VISIT IS USUALLY \$30 OR MORE.

	COST TO STUDENTS WITH HEALTH FEE CARD	COST TO STUDENTS WITHOUT CARD
Clinic visit	NO CHARGE	\$15.00 per visit
Mental Health Service visit	NO CHARGE	\$15.00 per visit
Laboratory tests	NO CHARGE	\$6.00 per test and up
Chest X-ray	NO CHARGE	\$28.00
Contraception services	NO CHARGE	\$15.00 plus lab tests
Routine Pap smear and exam	NO CHARGE	\$22.00
Allergy injections	NO CHARGE	\$5.00 each
Physical exams	NO CHARGE	\$25.00

After this week you can pay at Billings and Collections, Room 220 Service Bldg. or at the Health Service cashiers window (check Only)

You can pay the health fee all week (Jan. 11-15 in the Student Center, 9 a.m. - 3 p.m.)

THE FINAL DEADLINE TO PAY THE HEALTH FEE IS FEBRUARY 4, 1982.

YOU WON'T FIND A BETTER DEAL ANYWHERE!

SUB CENTER

SERVING OUTRAGEOUS SANDWICHES



438 S. ASHLAND AVE
CHEVY CHASE

EAT IN
TAKE OUT
FREE DELIVERY

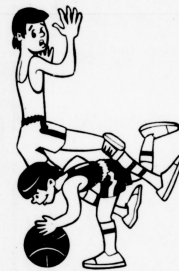
FREE DELIVERY

269-4693

with this ad receive
1 free coke with the
purchase of any 12 inch sub

White Castle

Any event can be enjoyed even more with a sack of White Castle Hamburgers. Pure beef, all beef — and ever so good. White Castles are open 24 hours a day, so stop by anytime. We're always glad to serve you.



Buy 'em
by the 'Sack'

at
Two Convenient
Locations To Serve You!
* New Circle and Bryan Station Rds
* 179 E. Reynolds Rd
1 block off Nicholasville Rd
at SouthPark Shopping Center

Lynn Paige

Originals

"Lexington's Newest
and Most Unique
Bridal Shoppe"

Patchen Village
Suite 34
Phone 269-4768



Our bridal consultant will be happy to assist you in coordinating your entire wedding - gowns, accessories, invitations, down to the last detail. Also inquire about our various easy - payment plans available.

Hours
10 a.m. - 8 p.m. Monday
10 a.m. - 6 p.m. Tues. - Sat.

Kurt Vonnegut
Margaret Bourke-White
Ernest Hemingway
Ansel Adams

They had to start somewhere.
 You can get your start with the Kernel.
 Come by room 113 in the Journalism
 Building if you are interested
 in writing or photography.

*52558	MIN 341 001	MINE VENTILATION	LAB	3	MW	1200-1250PM	AH 216C	WALA
					M	0300-0550PM	ML	
*52566	MIN 371 001	SEMINAR		1	M	0300-0350PM	AH 267	ZEGERE
*90999	MIN 551 001	ROCK MECHANICS		3	MWF	0100-0150PM	AH 262	HERGET

COLLEGE OF FINE ARTS

ART 191 001	ART 192 001	ART 193 001	ART 194 001	ART 195 001	ART 196 001	ART 197 001	ART 198 001	ART 768 001
Art-Education								
#A-E 270A001	A-E 270N401	A-E 272B002	#A-E 545 001	A-E 579 001	#A-E 599C003	#A-E 645 001		
A-E 270B004	#A-E 272A001	#A-E 399 001	#A-E 577 001	#A-E 599A001				
*90972	A-E 577 001	ART IN SECONDARY SCHOOL	3	TR	0100-0345PM	FA 302	SZEKELY	
Art-History								
A-H 105 001	#A-H 330 001	#A-H 395C003	#A-H 540 001	A-H 592 001	#A-H 640 001	#A-H 780C003		
A-H 106 001	#A-H 390 001	#A-H 395D004	A-H 550 001	A-H 598 001	#A-H 780A001	#A-H 780D004		
A-H 311 001	#A-H 395A001	#A-H 395E005	#A-H 560 001	#A-H 620 001	#A-H 780B002	#A-H 780E005		
A-H 320 001	#A-H 395B002	A-H 520 001	#A-H 590 001					
Art-Studio								
#A-S 102 001	A-S 321A001	A-S 360 001	A-S 510N401	#A-S 560 001	#A-S 595E005	#A-S 610 001		
A-S 102N401	A-S 321B002	#A-S 361 001	A-S 511N401	#A-S 561 001	#A-S 595I007	#A-S 740 001		
A-S 102N402	#A-S 340 001	#A-S 371N401	#A-S 520A001	#A-S 570N401	#A-S 595J008	#A-S 750 001		
A-S 103 001	A-S 340 002	*A-S 390B002	#A-S 520B002	#A-S 571N401	#A-S 595K009	A-S 767 001		
#A-S 103 002	#A-S 340N401	#A-S 390C003	#A-S 521B002	#A-S 595A001	#A-S 595L010	#A-S 770 001		
A-S 103N401	A-S 350A001	#A-S 390N401	A-S 550A001	#A-S 595B002	#A-S 596A001	#A-S 780 001		
A-S 215 001	A-S 350B002	#A-S 398B002	A-S 550B002	#A-S 595C003	#A-S 596C003	A-S 793 001		
#A-S 215N401	A-S 351A001	A-S 399 001	#A-S 551A001	#A-S 595D004	#A-S 596N401	#A-S 799 001		
#A-S 311 001	#A-S 351B002	#A-S 490 001	#A-S 551B002					
*25755	A-S 390B002	TOP ST: INTERMED PHOTOGRAPHY	STUDIO	3	TR	0100-0250PM	FB 127	STAFF
				HOURS ARR (6)				
*90891	A-S 390C003	TOP ST: FIGURE MODELING		3	TR	0100-0450PM	RB 221	TUSKA
*90905	A-S 570N401	CERAMICS III		3	MW	0600-0950PM	RB 253	ZWIERLEIN
*90913	A-S 571N401	CERAMICS IV		3	MW	0600-0950PM	RB 253	ZWIERLEIN
*26077	A-S 596C003	WKSP: ADV PHOTOGRAPHY	STUDIO	3	W	0600-0950PM	PEN 314	CARPENTER
				HOURS ARR (6)				

*Added course
 *Changed course
 #Five or fewer vacancies

hot dog!



SCHOOL'S HERE AGAIN!

LYNAGH'S
IRISH PUB

opening

THE DUBLIN-DELI
 lunch 11-2
 dinner 5-8

january things

- * "PHOENIX" 1st, 2nd, 13th, 14th *
- * LEXINGTON OPEN DART TOURNAMENT \$ 100.00+ *
- * PHOTOGRAPHY CONTEST OF WATER BEARING \$50, \$30, \$20 PRIZES *
- * JBLBDP w/ "PHOENIX" JAN. 25th *
- * TUESDAY NIGHT THEATRE OF CHANCES *
- * WILD IRISH ROSE TRADING CO. *
- 1/2 price daily hoo - MORE - "BE HAPPY - BE IRISH" CORNER OF WOODLAND & EUCLID



Says Welcome Back! Wildcats

You're Invited to try our SUPER Special

Buy one, 2, 3, 4 or 5 way dinner and get the second one at 1/2 price

Your Place For Food and Fun!

Happy Hour Daily 4pm - 7pm

House Brands 1⁰⁰ per drink

House Draft 25¢ 10 oz. mug

Wine 90¢ 5 oz. glass

Video and Pinball Games
 Video Taping of Your
 Special Events Available

Gold Star Chili
 393 S Limestone
 259-1133

IS THIS YOU IN DROP-ADD?

if you can't find what you need or all your classes are closed...Come see us.

You can always add one of our 155 classes!

Independent Study Program

ROOM 1-FRAZEE HALL-257-3466
8:00 - 4:30



OPEN DURING NOON FREE CATALOG

Come in and look at a study guide

STUDENTS!

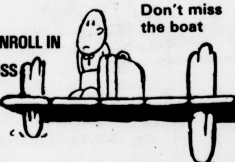
YOU NEED A GOOD INSURANCE POLICY TO HELP

MEET THE COSTS OF HOSPITALIZATION, ACCIDENT CARE, AND SURGERY!

THIS WEEK IS THE TIME TO ENROLL IN

THE UK STUDENT BLUE CROSS AND BLUE SHIELD PLAN.

IT'S A GOOD POLICY AT A GOOD PRICE



NEW ENROLLEES

BLUE CROSS AND BLUE SHIELD REPRESENTATIVES WILL BE AT THE STUDENT CENTER (foot of the ballroom stairs) FROM 9 AM TO 3 PM, MONDAY THRU FRIDAY, THE WEEK OF JAN 11th THEY CAN ANSWER YOUR QUESTIONS, ACCEPT YOUR APPLICATION AND PAYMENT (check only), OR PROVIDE YOU WITH BROCHURES AND APPLICATIONS SO THAT YOU CAN MAIL YOUR PAYMENT IN LATER. IT ONLY TAKES ABOUT 10 MINUTES TO ENROLL! IF YOU PICK UP MATERIALS TO MAIL IN LATER, YOUR APPLICATION AND PAYMENT MUST BE POSTMARKED BY FEB 11, 1982.

CURRENT SUBSCRIBERS

IF YOU HAVE NOT RECEIVED YOUR PREMIUM DUE STATEMENT (BILLING) FOR THE SPRING 1982 SEMESTER, CONTACT THE LEXINGTON BLUE CROSS/BLUE SHIELD OFFICE (255-2437). IT IS YOUR RESPONSIBILITY TO FOLLOW UP ON THIS! YOUR CONTINUING PAYMENT MUST BE POSTMARKED BY MARCH 26, 1982.

PLEASE NOTE: THE ENROLLMENT AND CONTINUING PAYMENT DEADLINES ARE STRICTLY ENFORCED. ALSO, THE HEALTH SERVICE DOES NOT TAKE PAYMENTS FOR THIS PLAN.

Coliseum Liquors

RED, WHITE & BLUE 12pk cans \$2.99

BUSCH 12pk NR bottles \$3.99

STROH'S 12pk NR bottles \$3.99

WARM CASES

BUSCH 24 cans \$7.95

BUDWEISER 24 cans \$8.49

Wine

Monte Frascati wine \$3.69 Fifth
Dry White Italian

MUSIC

#MUP 101 001	#MUP 117 001	#MUP 212 001	#MUP 310 001	#MUP 404 001	#MUP 422 001	#MUP 520 001
#MUP 102 001	#MUP 118 001	#MUP 213 001	#MUP 311 001	#MUP 405 001	#MUP 423 001	#MUP 521 001
#MUP 103 001	#MUP 119 001	#MUP 215 001	#MUP 312 001	#MUP 406 001	#MUP 501 001	#MUP 558 001
#MUP 104 001	#MUP 120 001	#MUP 216 001	#MUP 313 001	#MUP 407 001	#MUP 502 001	#MUP 603 001
#MUP 105 001	#MUP 123 001	#MUP 219 001	#MUP 314 001	#MUP 408 001	#MUP 503 001	#MUP 604 001
#MUP 106 001	#MUP 124 001	#MUP 220 001	#MUP 315 001	#MUP 409 001	#MUP 505 001	#MUP 605 001
#MUP 107 001	#MUP 202 001	#MUP 223 001	#MUP 316 001	#MUP 410 001	#MUP 507 001	#MUP 608 001
#MUP 108 001	#MUP 203 001	#MUP 301 001	#MUP 317 001	#MUP 411 001	#MUP 512 001	#MUP 611 001
#MUP 110 001	#MUP 204 001	#MUP 302 001	#MUP 318 001	#MUP 413 001	#MUP 513 001	#MUP 613 001
#MUP 111 001	#MUP 205 001	#MUP 304 001	#MUP 319 001	#MUP 415 001	#MUP 514 001	#MUP 617 001
#MUP 112 001	#MUP 206 001	#MUP 305 001	#MUP 320 001	#MUP 416 001	#MUP 515 001	#MUP 618 001
#MUP 113 001	#MUP 207 001	#MUP 306 001	#MUP 322 001	#MUP 417 001	#MUP 516 001	#MUP 620 001
#MUP 114 001	#MUP 208 001	#MUP 307 001	#MUP 323 001	#MUP 418 001	#MUP 517 001	#MUP 622 001
#MUP 115 001	#MUP 209 001	#MUP 308 001	#MUP 401 001	#MUP 419 001	#MUP 518 001	#MUP 658 001
#MUP 116 001	#MUP 210 001	#MUP 309 001	#MUP 402 001	#MUP 420 001		

#MUC 151 001	#MUC 158 001	MUC 171A001	#MUC 172 001	MUC 176 001	MUC 192 001	MUC 265 001
MUC 151 002	MUC 161 001	MUC 171B002	MUC 173 001	MUC 187 001	MUC 195 001	MUC 374 001
MUC 153 001	#MUC 163 001	MUC 171C003	MUC 175 001	#MUC 188 001	MUC 196 001	*#MUC 570 001
MUC 153 002	#MUC 164 001	MUC 171D004	MUC 175 002	MUC 191 001	MUC 197 001	MUC 596 001
MUC 157 001	MUC 170 001	MUC 171E005				

*#53392 MUC 570 001	ADV CHAMBER MUSIC ENSEMBLE	1	TBA	STAFF		
MUS 001 001	#MUS 173 003	#MUS 203 001	MUS 273 002	#MUS 395 001	MUS 621 001	MUS 703 001
MUS 120 001	*#MUS 174 001	*#MUS 261 001	MUS 300 001	MUS 501 001	MUS 622 001	MUS 719 001
MUS 172 001	MUS 200 001	MUS 261 002	#MUS 301 001	#MUS 504 001	MUS 660 001	MUS 750 001
MUS 172 002	MUS 200 002	MUS 264 001	MUS 364 001	MUS 530 001	#MUS 671 001	MUS 766 001
#MUS 172 003	MUS 200 006	MUS 265 001	#MUS 365 001	MUS 568 001	#MUS 673 001	#MUS 767 001
MUS 172 004	MUS 200 007	#MUS 272 002	MUS 370 001	MUS 571 001	MUS 675 001	MUS 768 001
MUS 172 005	MUS 200 008	MUS 272 003	MUS 371 001	MUS 573 001	MUS 677 001	MUS 770 001
#MUS 173 001	#MUS 200N401	MUS 273 001	MUS 371 002	MUS 575 001	#MUS 702 001	#MUS 799 001
*#54798 MUC 174 001	THEORY FOR NON-MUSIC MAJORS	3	MWF 1200-1250PM	FA 17	SHAFFERMAN	
*#54941 MUC 261 001	METH & MAT TCHG MUSIC ELEM GR	3	MWF 1100-1150AM	FA 6	WANG	

THEATRE

TA 101 001	TA 102 001	TA 225 001	#TA 351 001	TA 390 001	TA 495 001	+#TA 660 001
TA 101 002	TA 125 001	TA 226 001	#TA 352 001	+TA 390B002	TA 530 001	+#TA 692 001
TA 101 004	+TA 126 001	TA 260 001	#TA 353 001	TA 391 001	TA 581 001	+#TA 770A001
TA 101 005	+TA 126 002	TA 264 001	TA 354 001	TA 395 001	TA 590 001	+#TA 770B002
#TA 101 006	TA 190 001	TA 274 001	TA 365 001	#TA 425 001	TA 591 001	#TA 780 001
TA 101A01	TA 191 001	TA 350 001	TA 387 001	#TA 430 001	+#TA 600 001	

+91014 TA 390B002	PRODUCTION PRACTICUM	1	TR	1100-1215PM	FA GUI	SCHRAEDER
+91022 TA 600 001	READINGS IN THEATRE	3	TBA			RODGERS
+92045 TA 660 001	STUDIES IN TECH THREE: PRODUCTION 3	TBA				SCHRAEDER
+92053 TA 692 001	STUDIES IN DIRECTING	1-3	TBA			STAFF
+90956 TA 770A001	SEM TH: AMER MUSICALS	3	TR	1100-1215PM	FA 208	RODGERS
+90964 TA 770B002	SEM TH: THEATRE MANAGEMENT	3	TR	0200-0315PM	FA 208	BURSON

GRADUATE SCHOOL

*GS 600 001

DIPLOMACY AND INTERNATIONAL COMMERCE

#DIP 768 001 #DIP 795 001

PUBLIC ADMINISTRATION

PA 622 001	PA 626 001	PA 628N401	#PA 633N401	PA 722N401	PA 728 001	#PA 796 001
PA 623N401	PA 627 001	PA 629 001	PA 711 001	PA 727 001		

REHABILITATION COUNSELING

RC 530N401	RC 610N401	RC 620 001	RC 710 001	*RC 720 001	*RC 770N401	RC 782 001
*61247 RC 720 001	INTERNSHIP IN REHAB COUNSELING 3,6,9	W	0230-0430PM	TEB 125	STILLWELL D	
*61255 RC 770N401	SP TOPS REHAB:LRNG DISABILITIES 1-3	W	0600-0830PM	DH 203	WITTEN	

TOXICOLOGY

TOX 606 001	#TOX 680 001	TOX 768 001	#TOX 769 001	TOX 770 001	TOX 780 001	TOX 790 001
TOX 672 001	TOX 690 001					

+Added course
*Changed course
#Five or fewer vacancies

DON'T FORGET TO ADD BEFORE YOU DROP

HARBOR FREIGHT SALVAGE CO.
1387 NEW CIRCLE RD. IN THE A.B. DICK BUILDING
(606)253-0148
MON-FRI 8:30 to 6:00 SAT 9:00 to 5:00
VISA

40 pc. Socket Set \$4.49

MY BUDDY \$7.99

3 PC. RAINSUIT \$10

- DETACHABLE HOOD WITH METAL PRESS BUTTONS WITH COLLARSTITCHING
- DOUBLE FLY WITH METAL PRESS BUTTONS
- TWO FLAP POCKETS ON JACKET
- FULLY LINED
- 100% WATERPROOF

INDUSTRIAL HEAVY DUTY PVC TARPULAINS

SIZES	YOUR COST
8' X 10'	7.00
10' X 12'	11.50
10' X 20'	23.00
10' X 24'	36.00
20' X 40'	77.00

LIBRARY
Where Things Happen.

Monday. 60¢ draft beers, 60¢ ladies drinks and No Cover Charge.

Wednesday. Happy Hour from 5 til 8, Ladies Night with 60¢ drinks from 8 til 1. And No Ladies Cover Charge tonight.

Thursday. 60¢ draft beers, \$1.25 drink and No Cover Charge.

Friday. The famous Happy Hour from 5 til 8 with 50¢ drinks, and 8 til 10 \$1.00 drinks

Saturday. Rock and Disco oldies night with some of your favorite old dance songs and \$1.00 drinks from 7 til 11.

No cover charges for U.K. students with current I.D.'s.

LIBRARY
Woodland at Euclid Avenues

Fitness SPA for Men

MEMBERSHIP INCLUDES

- Hydra Swirl Whirlpool
- Sauna Bath
- Sun Tanning Rooms
- Private Showers
- Private Lockers
- Private Dressing Rooms
- Complete Free Weight Room
- Hair Dryers
- Jogging Equipment
- Fabulous Exercise Equipment
- Nutrition Guidance
- Supervised Programs

3 Months Free With This Coupon When you Sign Up On Your First Visit LIMITED TIME FITNESS SPA FOR MEN

Meet and Receive Training from Manager Ron Lacy, Former Mr. Universe and Mr. America

\$8.70 Non-Renewable

197 MOORE DRIVE 276-3580
Mon. - Fri 9 a.m. - 9 p.m. Saturday 9 a.m. - 4 p.m.

Condition With Jim Kovach With the New Orleans Saints And Former UK Linebacker

Dixie Cream
"The Best Donut" In The World!

Make Tracks To 396 Woodland Avenue in The University Plaza

10% Discount on \$10.00 order with 24 hr. notice
Open 24 Hours 253-1153

everybody's bike shop presents

New Bikes
Used Bikes
We Fix Bikes
Even

everybody's BIKE SALE
Raleigh 10 speeds 149.95
Azuki 10 speeds 149.95
212 Woodland Ave. 233-1764

Big Daddy Liquors
372 Woodland Ave. University Plaza Shopping Center

M - Th 8am - 12pm
Fri - Sat. 8am - 1am

Lexington's Largest Keg Outlet

Complete Selection of Domestic and Imported Wines

COLLEGE OF HOME ECONOMICS

HE 300 001

FAMILY STUDIES

FAM 101 001 FAM 253 001 FAM 255 001 FAM 411 001 FAM 561 001 FAM 596B002 FAM 655 001
 FAM 250 001 FAM 254 001 FAM 353 001 FAM 464 001 FAM 563 001 #FAM 599 001 FAM 658 001
 FAM 251 001 FAM 254 002 #FAM 354 001 #FAM 507 001 FAM 586 001 FAM 603 001 FAM 768 001
 FAM 252 001 FAM 254N401 #FAM 390 001 #FAM 509 001 #FAM 595 001 FAM 624 001 #FAM 785 001
 FAM 252N401 FAM 254N402 FAM 402 001 #FAM 551 001 FAM 596A001 #FAM 654 001 FAM 786 001
 #FAM 252N402

HUMAN ENVIRONMENT: DESIGN AND TEXTILES

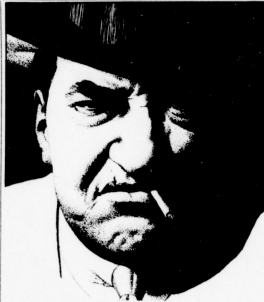
Design

#HED 102 003 #HED 204 001 #HED 306 002 #HED 405 001 #HED 528 001 #HED 593B002 #HED 772 001
 #HED 104 003 #HED 206 001 #HED 402G001 #HED 508 001 #HED 593 001 #HED 768 001 #HED 783 001

*#5179 HED 402G001 HISTORY OF INTERIORS II 3 MW 0300-0415PM CB 122 SNADON

Architectural Technology

ACH 170 001 ACH 170 002



**We Wanna
Make You
An Offer!**

**Come to the Kernel in Rm. 113,
Journalism Bldg. if you're
interested in writing, photography
or graphics.**

Textiles

HET 101 001 HET 310 001 HET 335 001 HET 414 001 HET 537 001 HET 597B002 HET 782 001
 HET 120 001 HET 320 001 HET 337 001 HET 414 002 HET 592 001 HET 768 001 HET 787 001
 #HET 131 002 HET 334 001 #HET 338 001 HET 533 001 HET 597 001

#92304 HET 131 002 ANALYSIS OF APPAREL QUALITY 2 TR 0800-0850AM EH 300 KIPP

NUTRITION AND FOOD SCIENCE

NFS 101 001 #NFS 206 001 *#NFS 342 001 NFS 516 001 NFS 591 001 #NFS 660 001 #NFS 772 001
 NFS 101N401 NFS 212 001 #NFS 503 001 NFS 517 001 NFS 591B002 #NFS 680 001 NFS 781 001
 #NFS 204 001 NFS 312 001 NFS 508 001 *#NFS 546 001 NFS 594 001 NFS 768 001 NFS 784 001
 #NFS 204 002 #NFS 340 001 NFS 510N401 NFS 590 001 NFS 603 001

*#55441 NFS 342 001 INSTITUTION FOODS LAB 4 MW 0900-0950AM EH 205 PAULK
 T 0900-0130PM EH 205

*#55514 NFS 546 001 INST ORG MANAGEMENT 3 MWF 0100-0150PM EH 205 PAULK

UNIVERSITY HONORS PROGRAM

HON 102 001 #HON 202 002 HON 202 006 HON 300 001 HON 398 001 MA 114H451 #PHY 232H451
 #HON 102 007 #HON 202 003 HON 202 007 #HON 302A001 HON 399 001 MA 398H451 #PSY 100H451
 #HON 102 008 #HON 202 004 HON 202 008 #HON 302B002 *#HIS 105H451 PHI 100H451 STA 200H451
 HON 202 001 #HON 202 005 #HON 203 001 HON 395 001 #HIS 109H451

*#5641 HIS 105H451 HIS OF EUROPE 1713-PRESENT 3 MWF 0900-0950AM COM 320 POPKIN

COLLEGE OF LIBRARY SCIENCE

LS 513 001 LS 576 001 LS 609 001 LS 622 001 LS 645 001 LS 656 001 LS 690M402
 LS 514 001 LS 603 001 LS 618 001 #LS 630 001 LS 647 001 LS 665 001 #LS 695 001
 LS 550 001 #LS 608N401 LS 620 001 #LS 630 002 LS 655 001 LS 686 001 #LS 768 001
 LS 575 001

COLLEGE OF MEDICINE

ANATOMY

#ANA 503 001 #ANA 532 001 ANA 536 001 ANA 611 001 ANA 634 001 #ANA 662 001 ANA 769 001
 ANA 516 001 ANA 532 002 ANA 538 001 ANA 629 001 ANA 636 001 #ANA 768 001 ANA 850 001
 ANA 529 001 #ANA 534 001 ANA 600 001 #ANA 633 001

*Added course
 #Changed course
 #Five or fewer vacancies

**IF YOU HAVE
SOMETHING TO
CROW ABOUT...**



**Do It
With The
Kentucky
KERNEL!**

**Advertise meetings,
deadlines, any
kind of announcement
that you want.**

**CHEVY CHASE
COIN LAUNDRY**

A Whiteway Laundry

**OPEN 8:00AM TO 10:00PM DAILY
CONVENIENTLY LOCATED IN CHEVY CHASE**

- DROP OFF SERVICE
- CLEAN MODERN FACILITIES
- COIN OPERATED DRY CLEANING
- ATTENDANT ALWAYS ON DUTY
- SOAP CHANGE & VENDING SUPPLIES

312 S. ASHLAND AVE.

266-5721

**WELCOME BACK
STUDENT S!**

**If You're Spending All Your Money
On Books -
And need some new Clothes
On the New semester -**

**Come To
J & H Army - Navy Store**

We Carry the Lowest Prices -

- Levi's Pre - washed straight leg
And bootcut jeans
- LEE's Pre - washed straight leg
And bootcut jeans
- LEE's Denium skirts
- Fatigues
- Backpacks

**All winter coats and vests
Reduced! !**

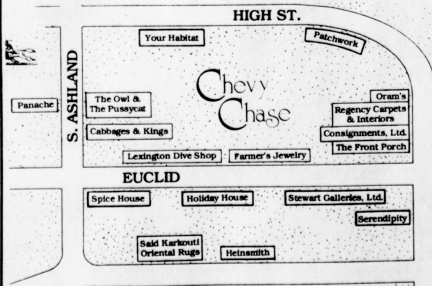
**515 WEST MAIN STREET
Across from Rupp Arena**

**9 am - 6 pm
Mon - Fri**

254-7613

**9 - 8 Sat
1 - 5 Sun**

**Lexington's Oldest Shopping
Center
Has Everything To Offer:**



- | | | |
|----------|---------------|------------|
| ANTIQUES | ENTERTAINMENT | DECORATING |
| BOOKS | LIQUOR | DINING |
| CANDLES | LINENS | FASHION |
| CARPET | JEWELRY | FINE ART |
| CHEESES | REAL ESTATE | FRAMING |
| DANCING | SPICES | FLOWERS |
| | THEATER | FURNITURE |

**Drafting Equipment & Supplies
10% Student Discount**



Vine

Rose

Old Vine

**Buy \$20 and not only
get a 10% Discount... But
receive a free KOH-I-NOOR
Technical Pen.**

Lynn Blue Print & Supply Co.

327 E. Vine

255-1021

Lexington, Ky.

255-1022

BEHAVIORAL SCIENCE

BSC 331 002 BSC 546 001 #BSC 772B002 BSC 772C003 #BSC 776-001 BSC 777 001 #BSC 790 001
 BSC 527 001 #BSC 772A001

#NUR 615D004 #NUR 662 001 #NUR 781 001 #NUR 852 002 NUR 854 001 NUR 866 001 NUR 880 002
 #NUR 615E005 #NUR 758 001 *NUR 848 001 #NUR 852 003 NUR 854 002 #NUR 868 001 #NUR 895 001
 #NUR 620 001 #NUR 768 001 #NUR 851 001 #NUR 852 004 NUR 856 001 NUR 868 002 #NUR 899 001
 #NUR 622 001

*55981 NUR 848 001 HUMAN SEXUALITY IN HLTH & ILL 3 W 0200-0530PM CN 521 DORSEY

BIOCHEMISTRY

#BCH 395 001 BCH 503 001 BCH 504 001 BCH 613 001 BCH 619 001 BCH 640 001 BCH 769 001
 BCH 502 001

COMMUNITY MEDICINE

CM 621 001 CM 775 001 CM 775N401 +CM 775N402 CM 785 001
 +92126 CM 775N402 SP TOP HLTH ADMIN:HLTH FINANCING 3 R 0700-0930PM COM 443 FURST

MEDICAL MICROBIOLOGY AND IMMUNOLOGY

#MMI 515 001 MMI 615 001 MMI 811 001 MMI 812 001

PATHOLOGY

+PAT 621 001 PAT 685 001 #PAT 812 001 PAT 821 001
 +90921 PAT 621 001 PATHOLOGIC MECHANISMS 4 TBA MDC M5403 GOLDENBERG

PHARMACOLOGY

#PHA 621 001 PHA 660 001 #PHA 672 001 #PHA 750 001 #PHA 768 001 #PHA 769 001 #PHA 770 001

PHYSIOLOGY AND BIOPHYSICS

PGY 206 001 PGY 504 001 PGY 549 001 PGY 606 001 PGY 630 001 PGY 769 001 PGY 791 001
 PGY 206 002 PGY 520 001 PGY 604 001 PGY 627 001 PGY 768 001 #PGY 772 001 PGY 811 001

RADIATION MEDICINE

RM 545 001 RM 546 001 RM 548 001 RM 549 001 RM 640 001 #RM 660 001 RM 740 001

COLLEGE OF NURSING

NUR 543 001 NUR 623 001 #NUR 771B002 NUR 851 002 #NUR 852 005 NUR 856 002 #NUR 868 003
 #NUR 550 001 #NUR 624 001 #NUR 771C003 #NUR 851 003 #NUR 852 006 NUR 858 001 NUR 874 001
 #NUR 610 001 #NUR 626 001 #NUR 771D004 NUR 851 004 #NUR 852 007 NUR 858 002 NUR 876 001
 #NUR 612 001 #NUR 627 001 #NUR 771E006 #NUR 851 005 #NUR 852 008 NUR 864 001 NUR 876 002
 #NUR 615C003 #NUR 655 001 NUR 774 001 #NUR 852 001 NUR 853 001 NUR 864 002 NUR 880 001

COLLEGE OF PHARMACY

#PHR 340 001 PHR 595 001 PHR 790 001 PHR 828 001 PHR 852 001 #PHR 873 002 PHR 883 002
 PHR 395 001 PHR 631 001 #PHR 802 001 #PHR 830 001 PHR 854 001 PHR 875 001 #PHR 884 001
 PHR 474 001 PHR 760 001 #PHR 802 002 PHR 835 001 PHR 856 001 PHR 878 001 PHR 884 002
 PHR 475 001 PHR 768 001 #PHR 802 003 PHR 838 002 PHR 860 002 PHR 881 001 #PHR 890 001
 PHR 476 001 #PHR 769 001 PHR 827 001 PHR 847 001 PHR 869 001 PHR 882 001 PHR 892 001
 PHR 510 001 PHR 778 001 PHR 827 002 PHR 849 001 #PHR 870 001 #PHR 882 002 PHR 895 001
 PHR 545 001 PHR 780 001 PHR 827 003 PHR 849 002 PHR 872 002 PHR 883 001 PHR 896 001

COLLEGE OF SOCIAL WORK

SW 001 001 SW 322 001 SW 448B002 SW 510 001 SW 609 001 #SW 640C003 SW 701 001
 *SW 124 001 SW 354 001 SW 444C003 SW 561N401 SW 620 001 #SW 640D004 SW 740 001
 SW 124 002 SW 395 001 #SW 444D004 SW 580N401 SW 621 001 #SW 640E005 #SW 745 001
 SW 124N401 #SW 411G001 #SW 445A001 SW 580A001 #SW 624 001 #SW 650 001 SW 750 001
 SW 222 001 #SW 416 001 SW 445B002 SW 580N402 SW 630N401 #SW 651 001 #SW 770 001
 SW 222 002 #SW 420G001 SW 445C003 SW 601N401 #SW 640A001 SW 680A001 #SW 780 001
 SW 225 001 #SW 427 001 #SW 445D004 SW 604 001 #SW 640B002 SW 680N401 #SW 780 001
 SW 225 002 #SW 444A001 #SW 477 001

*64157 SW 124 001 INTRO TO SOC SERVICES LAB 3 TR 0930-1020AM OT 145 BYARS
 1030-1220PM CB 241

*64301 SW 444A001 ED PRAC I:CRIM & JUV JUSTICE LAB 8 W 0300-0450PM COM 329 BRAUTIGAM
 TBA

#90930 SW 4440004 ED PRAC I:COMM & URB AFFAIRS LAB 8 M 0900-1050AM OT 108 HOLMQUIST
 TBA

*64335 SW 445A001 ED PRAC II:CRIM & JUV JUSTICE LAB 8 W 0300-0450PM COM 206 BRAUTIGAM
 TBA

+90948 SW 445D004 ED PRAC II:COMM & URB AFFAIRS LAB 8 M 0900-1050AM OT 108 HOLMQUIST
 TBA

*64513 SW 640A001 GRAD ED PRAC I:CRIM & JUV JUS 5 OR 10 F 0800-0950AM COM 206 BRAUTIGAM
 LAB TBA

+Added course
 *Changed course
 #Five or fewer vacancies



Be Informed...

READ THE KERNEL

Full Time or Part Time Employment can be obtained through International Bartending Inst.



276-3535

•Classes available 1-5 & 6-10 (special class times available for student schedules)
 •Job Placement Assistance - local and national

Complete Beauty Service
 I Fight Inflation
 No one can beat my low prices and still get the best professional service.
COLLEGE SPECIAL

JANUARY SPECIALS
 (with UK ID)

Haircut, Perm and Conditioning \$29
 Censor Perms reg. \$50
 "Great Feeling" Perms reg. \$35 Now \$20
 Frost with Conditioning reg. \$35; Now \$20
 All Hennas reg. \$25, now \$15
 Illuminizing reg. \$22, now \$15
 Hair Cutting now starting at \$10

Specializing in:
 Precision Cutting
 Advanced Techniques in Custom Perming
 Bleaching and Frosting Coloring
 Henna/Luminescence
 Luminizing
 Featuring Senior Perms*
 Great Feeling perms

Total Hair Care
 By Lonnie Lanham
 The Hair Master
 372 Southland Drive 276-2417
 (3 doors left of Sagasers Drug Store)

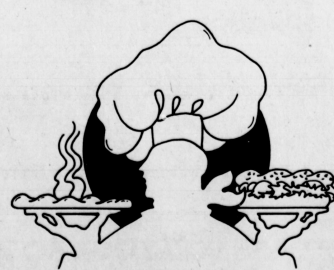
FAST FREE DELIVERY
 we reserve the right to limit delivery area \$4.00 Minimum Order

ANCHILES

GREAT PIZZA
 Whole wheat or white crust
 Deep Dish & Regular

SCUMPTIOUS SUBMARINE SANDWICHES
 Roast Beef, Turkey, Super Sub, Ham & Meatball

SUPER SALADS & BEER



Lexington — 269-3366 — Euclid & Ashland in Chevy Chase
 Richmond — 624-2424 — 263 East Main Street

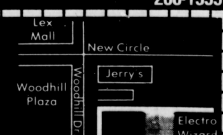
THE ELECTRO WIZARD ARCADE

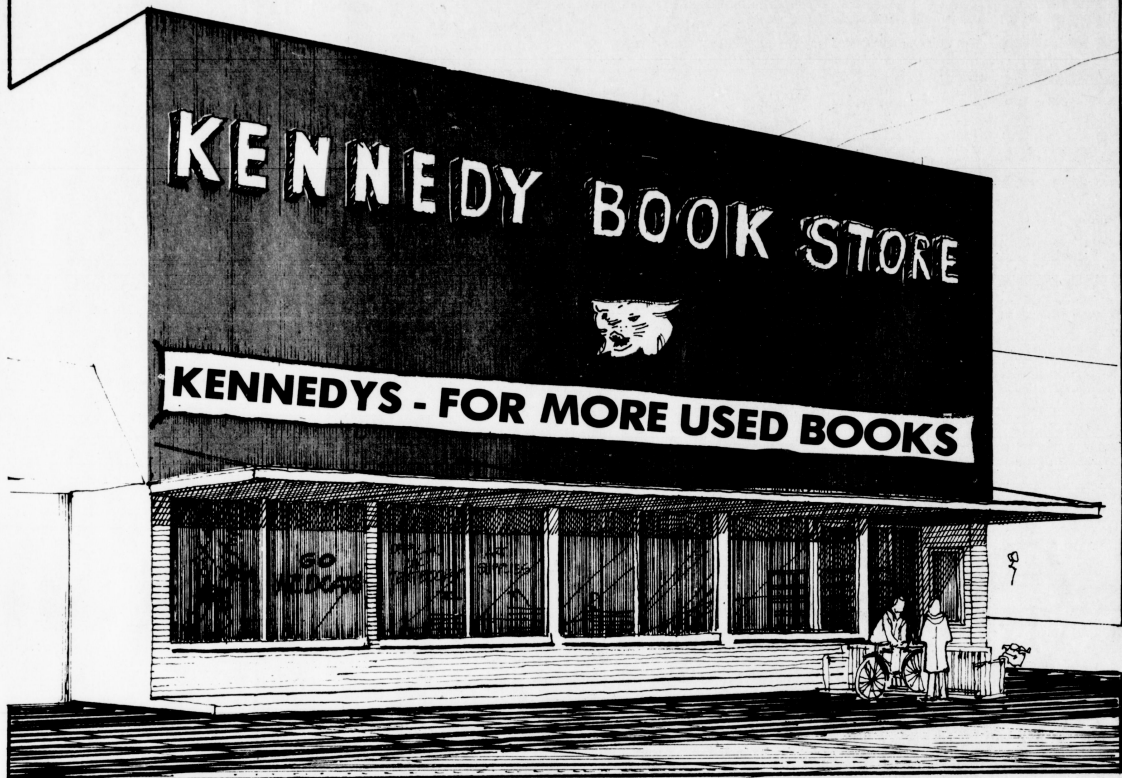
TOKEN SPECIALS • Mon. 6 for \$1.00
Wed. UK STUDENTS ONLY • 7 for \$1.00
Sunday • 5 for \$1.00
UK Ball Game Nights • 6 for \$1.00
High School Ball Game Nights • 6 for \$1.00

2331 Woodhill Dr. 268-1595

8 TOKENS for \$1.00 with coupon •

HOURS: M-F 12-9 Sat 10-7 Sun 1-8 If you're not there by 11 PM we'll leave.





Why do more people prefer

**KENNEDY BOOK STORE?
BECAUSE WE HAVE
MORE USED BOOKS**

(SAVE 25 %)

and because we have:

MORE space (largest store at U.K.)

MORE experience (30 years at U.K.)

MORE art and architecture supplies

MORE paperback books (for pleasure or study)

MORE school supplies

MORE U.K. Shirts and U.K. souvenirs

More of what you want when you want it

AND WE PAY TOP CASH FOR YOUR BOOKS!

Gold Circle®

dollar sale



5 for \$9
DOWNY Fabric Softener 64-oz. Reg. 2.79 ea.



10 for \$9
4-PK. NORTHERN BATHROOM TISSUE Limit 10 per customer. Reg. 1.19 ea.



5 for \$3 4 for \$3 3 for \$3
OUR BEST SELLING YARNS!
 •Creslan® worsted weight, 3-oz solids, Reg. 89¢ ea. 5 for \$3
 •Gold Medal 100% Orlon™, 3-oz solids, Reg. 1.09 ea. 4 for \$3
 •Sayelle, Orlon™, 4-oz. solids, 3-oz. ombres, Reg. 1.59 ea. 3 for \$3
*Dupont certification mark



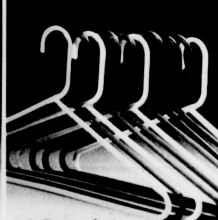
2 for \$1 Reg. 69¢ ea.
BRAWNY PAPER TOWELS
 Limit 10 rolls per customer.



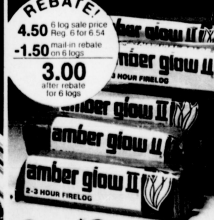
2 for \$1
KLEENEX TISSUES 200-ct.
 Limit 4 boxes per customer



\$1 ea.
8.2-OZ. TOOTHPASTE Aim, Close-Up or Pepsodent.



10 for \$1
PLASTIC HANGERS Tubular.
 Limit 50 per customer.



REBATE
 4.50 6 log sale price
 Reg. 6 for 6.54
 -1.50 mail in rebate
 on 6 logs
3.00
 after rebate
 for 6 logs
6 for \$3 after rebate
AMBER GLOW II LOGS Must buy 6 logs for rebate. No ranches 10000 store



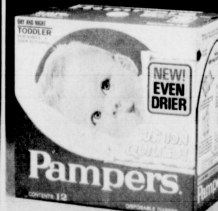
3 for \$1
DIAL DEODORANT SOAP 5-oz. bath bar. Limit 6 per customer



\$1 Reg. 1.49 ea.
KODAK COLOR FILM C110-12 or C126-12.



REBATE!
 sale price Reg. 2.99
 mail in rebate
1.00
 after rebate
 details on pkg.
\$1 after rebate
4-PK. G.E. LIGHT BULBS Soft White, 60, 75 or 100 watt.



5 for \$9
PAMPERS DIAPERS Disposable. Toddler 12's.



\$1 ea. Reg. 1.49
GC CABLE KNEE-HI'S Asst. colors. Orion. Ladies sizes 9-11.

Rubbermaid kitchen spectacular!

CLEAN UP CADDY WRAP BAG CADDY BAG CADDY

MOP/BROOM ORGANIZER IRONING ORGANIZER

\$3 ea. RUBBERMAID® ORGANIZERS • Clean-up, Wrap Bag or Bag caddy • Mop/Broom or Ironing Organizer • wastebasket • wire drainer • laundry basket • Cut-Away Bagger • drain tray • Reg. 4.19-5.49 ea.

\$1 ea. KITCHEN GADGETS • Kitchen utility shears • adjustable roast rack • diet scale • spatter shield • coaster set • 2 cake coolers • winged cork screw • garlic press • meat tenderizer • Reg. 1.19-1.89 ea.

2 for \$1 KITCHEN GADGETS • Pizza cutter • 3-pc. wood spoon set • whip • spaghetti server • 3-pc. bottle cap set • tongs • salad server • 3-pc. funnel set • bottle/can opener • more! • Reg. 59-99¢ ea.

4 for \$5 HOUSEHOLD CLEANERS • 26-oz. Soft Scrub • 14-oz. Carpet Fresh • 32-oz. Glass Plus • 2000 Flashes • 16-oz. Woolite • 16-oz. Dow oven cleaner • Reg. 1.49-1.79 ea.

4 for \$5 HOUSEHOLD PLASTICS • Tulip, pleated or vanity wastebaskets • pail • 6-gallon trash can • vegetable bin • dish pan • Reg. 1.59-2.99 ea.

dollar sale

\$9 Reg. 14.99
IRONING BOARD Adjustable Pad and cover set, Reg. 3.49 • 12

2 for \$7 Reg. 5.99 ea.
SHOE STACK Holds 8 pr of shoes Plastic. Ass't colors.

5 for \$4 Reg. 1.29 ea.
PLASTIC SHOE BOXES

\$9 Reg. 12.99
4-SHELF STORAGE UNIT From Hellermade 2-shelf unit, Reg. 7.99 • 15

2 for \$1 Reg. 79¢-1.29 ea.
PLASTIC measuring cup, beverage saver, orange sipper, straw cup and more!

\$4 Reg. 6.99
SALAD SPINNER

3 for \$2 Reg. 99¢ ea.
50-FT. SARAN WRAP

2 for \$3 Reg. 1.99 ea.
CERAMIC MUGS Assorted styles and colors.

2 for \$3 Reg. 2.19 ea.
ADDA-HANGERS For skirts and blouses. Adjustable clips. Chrome skirt or pant hanger. Reg. 2.19 ea. • 2 for \$3

\$8 Reg. 10.99
RUBBERMAID STEP-ON CAN Chocolate or white.

2 for \$1 **2 for \$3**
RUBBERMAID Ice cube tray or spatula set, Reg. 79¢-99¢ ea. • 2 for \$1
Measuring cup, turntable or cutlery tray, Reg. 1.99-2.29 ea. • 2 for \$3

\$1 ea.
E-Z FOIL BAKEWARE Assorted sizes. Reg. 1.29.

2 for \$5 Reg. 3.49 ea.
LAUNDRY BASKETS Gold, almond or chocolate.

\$3 Reg. 3.99
SINK SET Chocolate, yellow or almond.

3 for \$2 Reg. 99¢ ea.
MAGLA RUBBER GLOVES Small, medium and large.

\$2 Reg. 2.69
X-14 MILDREW REMOVER

2 for \$3 Reg. 2.19 ea.
STATIC GUARD Helps eliminate static cling.

5 for \$2
28-OZ. AMMONIA

\$3 Reg. 3.99
16-OZ. SCOTCHGARD™ Fabric Protector.

\$2 Reg. 3.19
22-OZ. WOOLITE RUG CLEANER

\$2 Reg. 2.89
32-OZ. MOP & GLO

\$7 Reg. 9.99
CATCH AND CARRY From Rubbermaid. Gold or chocolate.

\$4 Reg. 4.99
BOXETTE STORAGE Almond, brown, red, white.

\$1 Reg. 1.39
SOS SOAP PADS With long lasting, hard working soap.

\$1 Reg. 1.49
METAL DUSTPAN In assorted colors.

2 for \$3 Reg. 2.29 ea.
LAUNDRY BASKETS Yellow, chocolate or almond.

2 for \$3 Reg. 2.29 ea.
RUBBERMAID sink mat or sink divider mat. 4 colors.

\$5 ea. Reg. 7.49
RUBBERMAID WASTE BASKETS Covered or self-closed.

2 for \$3 Reg. 2.29 ea.
14-OZ. BEHOLD

\$1 ea. Reg. 1.49
SPARKLERS Decorative air fresheners.



2 for \$1

YOUR CHOICE! 260-ct. cosmetic puffs, 16-oz. rubbing alcohol, 1-gal. distilled water. All from Gold Circle.



2 for \$3

100-CT. GC VITAMIN C Choose Vitamin C or Vitamin C with Rose Hips. Both 500 mg. Reg. 2.49-3.09 ea.

2 for \$5

100-CT. GC VITAMIN E Choose Natural Vitamin E, 200 IU, or Synthetic Vitamin E, 400 IU. Reg. 4.19-4.39 ea.



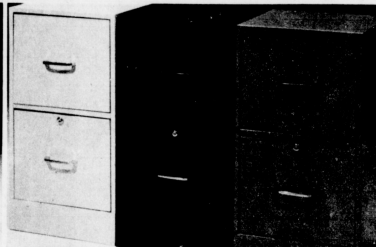
\$1 ea.

ROYAL SHAMPOO AND CONDITIONER Wheat Germ Oil and Honey shampoo, Balsam and Protein shampoo or conditioner. 28-oz.



2 for \$3

YOUR CHOICE! 160-ct. Gold Circle Baby Wipes, 100-ct. Gold Circle Children's Chewable Vitamins in Reg. or Iron or 9-oz. fluoride toothpaste with pump dispenser.



\$28

2-DRAWER 14" FILING CABINETS Heavy gauge steel cabinet with double drawer lock can accommodate hanging file folders. 28x14x14 3/4". Blue, putty or black. Reg. \$3.99.



\$2 ea.

DESK ACCESSORIES Stak-Ette letter trays easily snapped together or taken apart by special release feature. Desk Mate cylinder organizer or drawer organizer. Reg. 2.99-3.49 ea.

Our check acceptance card lets you pay by check at the register in one simple step!

Apply at the service desk.



2 for \$3

SECRET DEODORANTS Choose 2-oz. solid, 1.5-oz. roll-on or 5-oz. spray. All in Regular or Unscented.



2 for \$3

Reg. 2.09 ea. **2-OZ. BARNES-HIND** Wetting Solution.



2 for \$3

Reg. 2.29 ea. **8-OZ. BAUSCH & LOMB** Saline Solution.



2 for \$5

Reg. 3.39 ea. **RAVE SOFT PERM REFILL** Regular or Extra Curly.



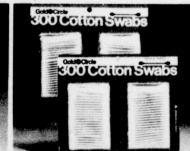
4 for \$3

CREPE SOAP ON TAP 10.5-oz.



2 for \$1

CHAPSTICK LIP BALM Assorted flavors.



2 for 1.50

300-CT. COTTON SWABS For babies and adults.



3 for \$2

CUTEX POLISH REMOVER Regular or Lemon. 6-oz.



2 for \$5

6-OZ. COMTREX Maximum Strength liquid cold medicine.



\$3 ea.

Reg. 3.79-5.29 **100-CT. GOLD CIRCLE** Centra-Vite or Thera M vitamins.



2 for \$5

Reg. 3.39-3.99 **60-CT. GC STRESS FORMULA** Regular, Iron or Zinc.



2 for \$1

11-OZ. BARBASOL shave cream. Regular, Lemon/Lime, Menthol.



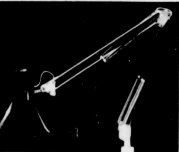
\$1

8-CT. BIC DISPOSABLE SHAVERS



\$1

5-CT. SCHICK SUPER II cartridge razors.



\$13

Reg. 17.99 **SWING ARM LAMP** Adjustable. Clamps on to any surface.



\$7

Reg. 8.99 **2 IN 1 HOME TAX ORGANIZING SYSTEM.** Check file packed inside letter size tax file with folders and more!



\$18

Reg. 24.99 **ELECTRIC PENCIL SHARPENER** with Auto-Stop (RP100)



3 for \$1

Reg. 49¢ ea. **100-CT. INDEX CARDS** Ruled or plain. 3x5".



\$1

Reg. 1.49 **GOLD CIRCLE CRAYONS** 48 brilliant, non-toxic colors.



2 for \$3

Reg. 1.99 ea. **CRAYOLA MARKERS** 8 vivid water color markers.



\$1

Reg. 1.49 **THEME BOOKS** 3-subject, college ruled, 120 pages.



2 for \$1

Reg. 89¢ ea. **4-OZ. ELMER'S GLUE** School Glue or Glue All. Non-toxic.



\$1 to \$9 ea.

BOOKS! 30%-70% off Publisher's list price.



\$2 ea.

Reg. 2.39 **GOLD CIRCLE PEANUTS** Dry roasted or unsalted. 16-oz.



2 for \$1

Reg. 59¢ ea. **WRIGLEY'S PLEN-T-PAK** Spearmint, Doublemint, Juicy Fruit



3 for \$2

Reg. 99¢ ea. **CHUNKY CANDY BARS** Original, milk chocolate, pecan



3 for \$2

Reg. 89¢-99¢ ea. **YOUR CHOICE!** 16-oz. Jelly Beans or 7-oz. Whoppers malted milk balls.



3 for \$2

Reg. 99¢ ea. **CANDY 1** Pom Poms, Jr. Mints, Bridge Mix, Chocolate Stars, Sugar Babies, Junior Mints.



2 for \$1

Reg. 75¢ ea. **BIC LIGHTERS** Adjustable flame. Assorted colors.

Time-Zero Supercolor SX-70 Land Film

REBATE!
6.00 sale price Reg. 6.99
-1.00 read in rebate
5.00 cash after rebate

Polaroid

\$5 after rebate
Save on Time-Zero!
POLAROID TIME-ZERO instant print film. Single pack 10 prints.

To the consumer: Complete this coupon and return it to Polaroid Coupon Office, P.O. Box 2808, Readville, NC 27322. Please enclose your sales receipt and the end panel from your Polaroid Time-Zero single pack. Polaroid will reimburse your \$1.00. Coupons must be received by **January 31, 1982**. Please allow 60 days for delivery. Void where prohibited by law. Limit one per family or company. Coupon void where requests for this offer. Polaroid reserves the right to limit claims by its distributor or commercial users. Not responsible for legible or uncompleted coupons.

Name _____
Address _____
City _____ State _____ Zip _____

\$37 **TOUCH & TELL** Electronic learning aid for preschoolers. Reg. 49.99.

\$47 **Save 12.99**
TEXAS INSTRUMENTS LEARNING AIDS Electronic Speak & Math, Speak & Read or Speak & Spell. Reg. 59.99. No rainchecks. 24/store.
Modules for learning aids. Reg. 19.99. **17**

\$75 **Save 14.99**
HUFFY® SUNSPIRIT EXERCISE BIKE 20" wheel with tension control, speedometer, odometer and enclosed chain guard. Reg. 89.99.

\$55 **Save 14.99**
BENCHGYM EXERCISER 1" foam padded board, 4 position incline, pulleys, padded leg curl. Sturdy 1" tubular steel. Reg. 69.99. Weights not included.

dollar sale

2 for \$5
PLAYSKOOL WOOD BOARD PUZZLES Colorful designs on durable wood. Easy Puzzle, Disney Puzzle, First Puzzle, more! Reg. 3.49.

\$4
RUBIK'S CUBE™ Amazing puzzle challenge. Reg. 4.99.
Rubik's Cube™ solution book, Reg. 1.79 ea. **2 for 13**

\$10 ea. **Save 1.99**
ATHLETIC SHOES Olymped All-Court shoe, canvas upper, padded nylon tongue or Converse ABA/USA basketball shoe, hi-top or lo-cut. Reg. 11.99 ea.

\$17 to \$26
ATARI GAME CARTRIDGES Racing, space, sports or combat games. No rainchecks. At least 20 per store. Not all styles in all stores. Reg. 19.99-29.99 ea.
Asteroids game cartridge, Reg. 34.99. **29**

\$3 Reg. 3.99
DUKES OF HAZZARD™ Card Game from the makers of Uno!

4 for \$3 Reg. 99¢ ea.
HOT WHEELS™ CARS Tough, die cast metal. From Mattel®.

\$2 ea. Reg. 2.39
WILSON TENNIS BALLS, can of 3, or Penn Racquetballs, can of 2. Limit 6 cans.

\$5 ea. Reg. 6.99
SWEATSHIRTS, SWEAT-PANTS Cotton/acrylic in grey or navy. Men's S-M-L-XL. Sporting Goods Dept.

\$11 Special purchase!
WARM-UP SUIT Navy, royal or light blue with stripes. Men's S-M-L-XL. No rainchecks. Sporting Goods Dept.

1.50 Reg. 1.69-1.99
EVEREADY ENERGIZER batteries. Choose 2-pk. C, D, AA or 1-pk. 9 volt.

SPECIAL OFFER!
Buy any two packages of Eveready Energizer Alkaline batteries, main in coupon, and Eveready will send you a \$2.00 rebate plus a \$0.50 Eveready store coupon! Details only in store.

\$1
BLANK CASSETTES Choose 3-pk. 60-min or 2-pk. 90-min.

\$5 Reg. 7.99
RECORD HOLDER and carrier in attractive brass, brown or white.

\$24
'YOUNGSTAR' SKATES Boys', girls' Sizes 1-4. Reg. 28.99. Derby Star skates for adults. **29**

\$25 Reg. 29.99
SLANT BOARD Tummy Master with thick foam padding for sit-ups and other exercises.

\$25 Reg. 32.99
POLAROID ONE-STEP TZ Automatic focus camera. Time-Zero film included.

GoldCircle™
BONUS FILM OFFER!
Bring in any roll of film for developing plus this coupon and we will give you a roll of Fuji 110 or 135, 12-exposure film at no extra cost!

Offer expires 1/16/82.

2 for \$3 Reg. 2.49 ea.
TAPE BOXES Hold 15 cassettes or 12 8-track tapes.

\$15 ea. Reg. 16.99
VIDEO CASSETTES TDK T-120 VHS or TDK L750 Beta.

\$19 Reg. 29.99
DIGITAL CLOCK RADIO AM/FM. With alarm. (#520) AM/FM/ACC portable radio. Reg. 15.99. (#219). **12**

\$9 Reg. 13.99
GARMENT BAG 3 hangers included.

\$5 Reg. 5.99
PHOTO ALBUMS Flip-type album for 100 photos or 40pg. spiral bound album.

GoldCircle™
photo finishing coupon
2 DAY SERVICE* GUARANTEED OR IT'S FREE!

\$2 up to 12-exp. 110 or 135
\$3 up to 20-exp. 110 or 135
\$4 up to 24-exp. 110 only
\$4 up to 24-exp. 35MM only
\$6 up to 36-exp. 35MM only

*GC borderless color prints
*Kodak, Focal, Fuji or GC film
*Kodak compatible C-41 process only
*Limit 1 roll per coupon, 1 print per negative @ 25¢ extra charge for ASA 400
*Other express 1/16/82
*Weekends and holidays excluded. Check schedule in store for pick-up and delivery times.

REBATE!
 18.00 sale price
 Reg. 27.99
 -3.00 main-in rebate
 15.00 after rebate
 limit 1



\$15 after rebate
SHETLAND QUARTZ HEATER Heats with energy-efficient quartz heat. 1500 watts. Hi/lo off switch. (#SHD01A)

\$16
NORELCO CLEAN AIR MACHINE Filters smoke, odors, dust, pollen, sends out fresh citrus scent. Reg. 19.99 (#1900)



\$5 8" saute
 Reg. 7.99

\$7 10" saute
 Reg. 9.99

\$9 12" saute
 Reg. 11.99

WEAVER PREFERRED SAUTE PANS Your choice of three convenient sizes, all with durable, non-stick Silverstone™ interior.



REBATE!
 20.00 sale price
 Reg. 25.99
 -4.00 main-in rebate
 16.00 after rebate
 limit 2



\$16 after rebate
MR. COFFEE 10-CUP COFFEEMAKER Coffee brewing system that automatically switches from brew to warm (#CM-1)
Mr. Coffee 10-cup carafe (#D-7), Reg. 5.99 \$5

2 for \$5
BAKER'S SECRET BAKEWARE ASSORTMENT Choose from cookie sheet, oblong cake pan, 12-cup muffin pan or pizza pan. Reg. 3.49-3.99 ea.



\$5 magazine rack
 Reg. 9.99

\$15 ottoman
 Reg. 24.99

\$20 chair
 Reg. 39.99

AFFORDABLE CANYAS AND STEEL FURNITURE! Fun, functional furniture for a den, family room or apartment. Choose chair, ottoman and magazine rack in natural, rust or brown. No rainchecks. 50 total per store.



Shop early Sunday 9am!

\$64 Reg. 79.99
HOOVER UPRIGHT VACUUM Dial-A-Nap, headlight, edge cleaner (#4119)



2 for \$1 Reg. 99¢ ea.
MR. COFFEE FILTERS 100-ct. (#UF100)



\$18 Reg. 23.99
HAMILTON BEACH Popcorn 2 popcorn popper. (#511)



\$16 Reg. 19.99
GILLETTE deluxe heat wrap/cold pack (#2640)
Standard wrap (#2820), Reg. 15.99 \$14



\$3 Reg. 3.99
PARSON'S TABLE Almond, chocolate, yellow or white.



\$30 Reg. 59.99
WICKER KING CHAIR Cushion not included. No rainchecks. At least 25/store



2 for \$1 Reg. 1.19 ea.
HOOVER VACUUM BAGS 4-pk. C, 3-pk. D, 4-pk. J disposable filter bags.



REBATE!
 11.00 sale price
 Reg. 14.99
 -2.00 main-in rebate
 9.00 after rebate
 limit 1

\$9 after rebate
CONAIR 1500 WATT DRYER 2 speeds, 4 heat settings. (#098)



REBATE!
 7.00 sale price
 Reg. 9.99
 -2.00 main-in rebate
 5.00 after rebate
 limit 1

\$5 after rebate
CONAIR 'A NEW TWIST' curling brush (#BC10)



\$10 Reg. 13.99
1500 WATT DRYER 2 speeds, 4 heats (#HA2215)



\$1 Reg. 1.99
MEXICAN WASTEBASKET No rainchecks. At least 75/store



\$2 Reg. 2.99
LAP TRAYS Strawberry Shortcake, Dukes of Hazzard, Ziggy, Holly Hobbie, more!



\$4 Reg. 5.99
CURLING IRON (#ME16A)



\$13 Reg. 16.99
SUNBEAM STEAM/DRY IRON (#11-19)



\$8 Reg. 10.99
AUTOMATIC CAN OPENER with knife sharpener. (#GY-8)



\$12 Reg. 14.99
HAMILTON BEACH 3-speed hand mixer (#97)



\$4 Reg. 6.99
TIMEX® ALARM CLOCK Electric.



\$5 Reg. 7.99
DOOR MIRROR 14 x 50" wood-like frame.



\$12 Reg. 14.99
PROCTOR-SILEX TOASTER (#T620)



\$5 Reg. 5.99
ELECTRIC HOT POT Heats water, baby bottles, more! (#2306)



\$2 ea. Reg. 4.99
WOOD KITCHEN TOOLS in ceramic containers. 4 styles.



\$1 and \$2
PICTURES Special purchase 5x7" or 8x10". No rainchecks.



\$6 Reg. 9.99
ELECTRIC WALL CLOCKS Timex® and Spartus®.



2 for \$5 Reg. 3.99-5.49 ea.
WOOD PICTURE FRAMES 5x7" or 8x10".



\$15 Reg. 19.99
5-PC. STAINLESS STEEL mixing bowl set.



\$4 Reg. 5.99
2 1/2-QT. TEA KETTLE Stainless steel, copper-clad bottom



\$2 Reg. 3.99
CHEESE AND CRACKER TRAY Plastic.



\$4 ea. Reg. 7.99
YOUR CHOICE! 4-pc. soup mug set or 5-pc. mug/free set.

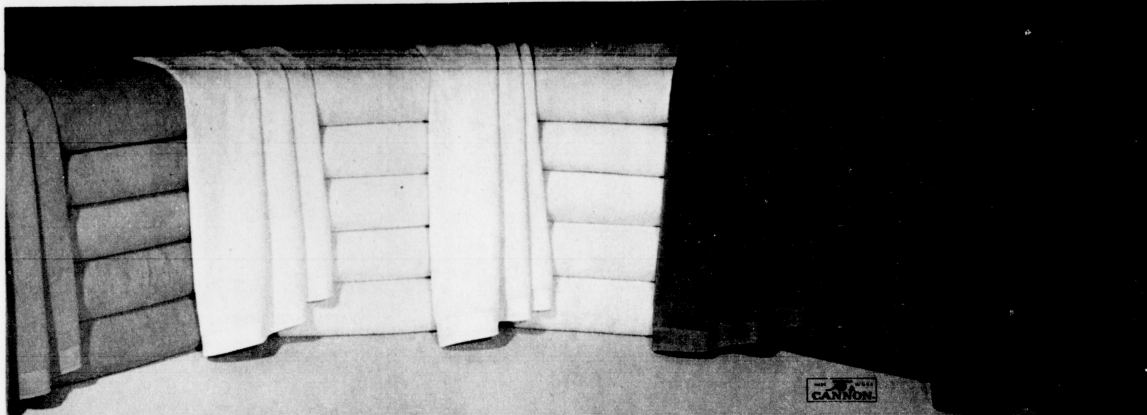


2 for \$1 Reg. 79¢ ea.
SILK FLOWERS Phloxes, Reg. 2.49 ea. 2 for \$1.00
 Dried flowers, Reg. 1.19 ea. 2 for 1.50



\$10 Reg. 17.99
'L'L' LITES' LAMPS Ceramic base with pleated shades.



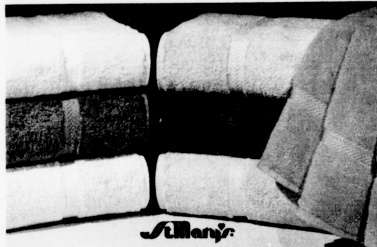


Special purchase! 1st quality Cannon® velour towels!

\$3
bath

CANNON® SHEARED VELOUR TOWELS that reverse to thick looped terry. Rust, brown, light blue, yellow, beige. Sorry, no rainchecks.

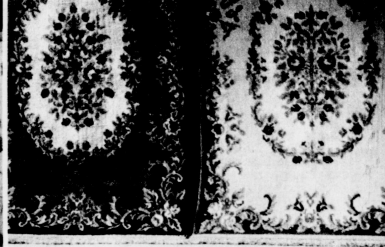
Hand 12 Wash 14



\$7
Jumbo 27x50" bath
Reg. 8.99
ST. MARY'S 'LOVING TOUCH' TOWEL Soft, thick 100% cotton in sable, peach, light blue, champagne, mint, blush and new rose solids. The same bath towels dept. stores sell for \$12-\$14!
Hand, Reg. 4.99 3.75 Wash, Reg. 2.29 1.75



\$2
Bath
Reg. 3.69
CANNON® COORDINATING TOWELS Mix and match! 'Cortical' floral stripes in blue, pink, yellow. 'Floral Portrait' in blue, brown, rose or 'Monte Carlo' windowpane plaid in rust, blue, ruby.
Hand, Reg. 2.49 1.50 Wash, Reg. 1.59 1.10



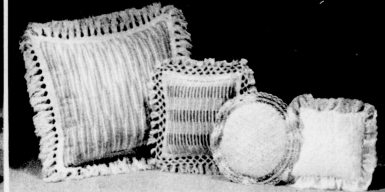
\$8
22x45"
Reg. 11.99
COTTON ORIENTAL DESIGN RUGS Our entire stock of Chinese and floral print oriental design area rugs is now reduced—3.99 off all sizes! No rainchecks. At least 40 per store.
30x50", Reg. 19.99 16 41x65", Reg. 37.99 154
22x79", Reg. 21.99 110



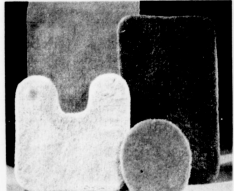
2.50
45x60" crib
Reg. 2.99
BATTING Dupont Dacron® Hollofil® 808
81x96" quilt, Reg. 4.99 14
90x108" quilt, Reg. 6.99 6



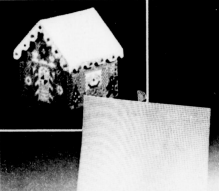
2 for \$5
Reg. 3.99 ea.
12 X 12" LATCH HOOK KITS Choose from our entire stock! Include precut yarn, stamped canvas, easy to follow instructions.
20x27" latch hook kits, Reg. 9.99



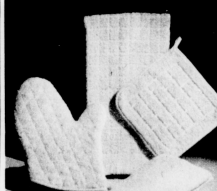
\$4
Reg. 4.99-5.99
NATURAL OR EYELET/LACE PILLOWS Beautiful toss pillows! Choose hand-loomed cotton styles or eyelet and lace round or square styles.
Hand-woven cotton floor pillow, Reg. 14.99 111



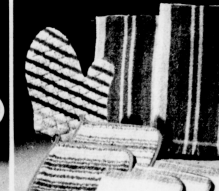
5.50
21x36" or contour
Reg. 6.99 ea.
ULTRA VELVET BATH RUGS
Easy-care 100% Dupont 833 nylon in beige, tiger lily, dusty rose, brown, light blue, lemon. Machine wash.
24x42" or tank set, Reg. 10.99 8.50
Lid cover, Reg. 3.99 3.25
5x8", (not in lemon) Reg. 29.99 24



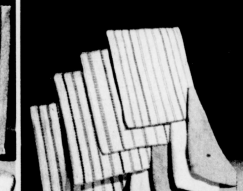
2 for \$1
Reg. 99¢ ea.
11 X 14" PLASTIC CANVAS for needlework projects. 7 hole/inch. Needs no blocking, will not ravel.
(Photograph shows creative possibilities)



\$1
Towel, Reg. 1.69
COLORFUL KITCHEN TERRIES
Solid color kitchen ensemble in orange, yellow or rust.
Dish cloth, Reg. 89¢ 77¢
Pot holder, Reg. 89¢ 77¢
Oven mitt, Reg. 1.69 1



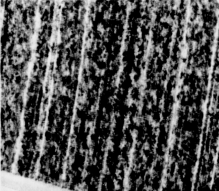
\$1 ea. Reg. 1.69
KITCHEN TERRY COORDINATES
Choose 2-pk. towels, 3-pk. dishcloths, 2-pk. pot holders or 1 oven mitt.



4 for \$1 Special purchase!
DISHCLOTHS OR WASHCLOTHS Stock-up now on terry washcloths or waffle-weave dishcloths. No rainchecks.



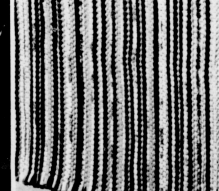
\$7
Wastebasket Reg. 9.99
WICKER ACCESSORIES for the bath in natural or white.
Tissue holder, Reg. 6.99 5.50
Shelf, Reg. 21.99 17
Soap dish, Reg. 5.99 4.50
Tumbler holder, Reg. 4.99 3.75
Towel tree, Reg. 12.99 10



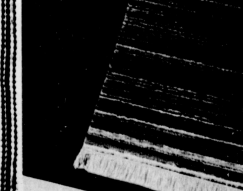
2 for \$7
17x28"
Reg. 4.99 ea.
NYLON TWEED MATS Absorb water and dirt, keep floor and carpet clean. Use indoors or outdoors.
24x42", Reg. 11.49 10



2 for \$6
Reg. 4.99 ea.
KITCHEN 'SLICE' RUGS Choose vegetable, coffee pot, mushroom, rainbow or strawberry designs. Stain-resistant. Non-skid back.



2 for 1.50
19x33"
Reg. 1.29 ea.
WOVEN UTILITY RUG Multi-color design protects floor and carpet.
24x45", Reg. 1.99 11



2 for \$6
21x34" or 21x36"
Reg. 4.99-5.49 ea.
STRIPED OR SOLID RUGS Both washable, skid resistant.
28x45" or 27x45", Reg. 7.99-8.99 17
34x58" or 30x54", Reg. 11.99-12.99 110
24x70", Reg. 12.99-13.99 111



\$2 Special purchase!
PLACEMAT/NAPKIN BONUS
Buy one solid color quilt placemat for \$2, receive matching napkin at no extra cost! No rainchecks.



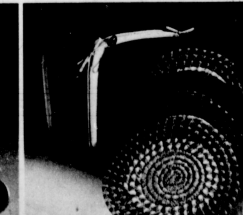
\$12 Round tablecloth Reg. 14.99
DECORATOR TABLECLOTHS
Round tablecloths in a rainbow of beautiful solid colors.
Wood table, Reg. 9.99 9



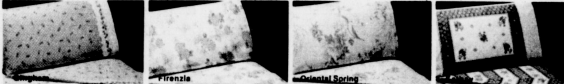
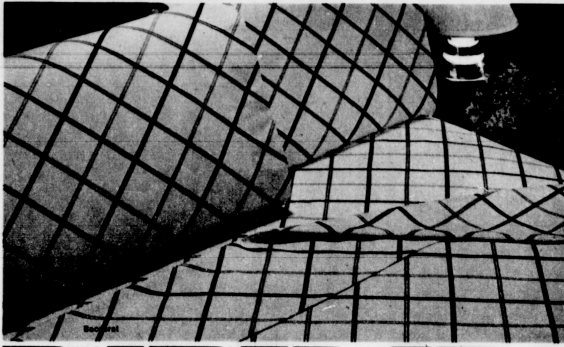
2 for \$7
8mm, 100 yd. twisted
Reg. 5.49 ea.
POLYOLEFIN MACRAME CORD Solids and ombres available. Non-toxic, washable, fade resistant.
Knitted cord 6mm, 100 yd. 2 for \$8



4 for \$5
Reg. 1.99 ea.
MAKIT & BAKIT KITS Stained glass look suncatchers. Complete with frame, color crystals, instructions.
Knitted cord 6mm, 100 yd. 2 for \$8
(Photograph shows creative possibilities)



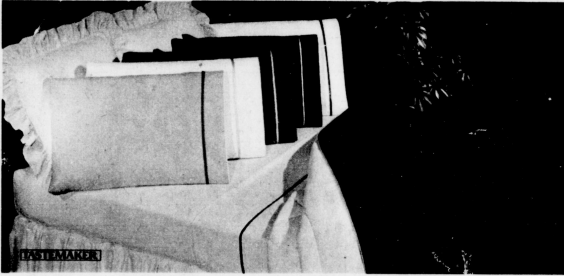
2 for \$5 2 for \$3
1" flat reversible 16" braided
Reg. 3.29 ea. Reg. 1.99 ea.
CHAIR PADS Braided or reversible in five color combinations.



\$10 twin set Reg. 13.99-15.99
NO-IRON SHEET SETS IN FASHION PRINTS: 'Oriental Spring' from Pacific, 'Gingham' and 'Firenze' from Cannon, 'Baccarat' and 'Kathay' from Pequot. Poly/cotton. Complete sets have 1 flat and fitted sheet plus 2 cases (twin-1 case).
Full set, Reg. 20.99-22.99 *16 **Queen set, Reg. 26.99-29.99** *22



\$14 Twin set Reg. 16.99
COLORFUL NO-IRON TWIN SHEET SETS JUST FOR KIDS! They'll love 'Strawberry Shortcake', 'Mickey' and 'Sesame Street' characters, plus the 'Pink Panther' and 'Life Savers' on sheet sets including 1 flat and fitted sheet plus 1 case.
Matching twin-size comforters, Reg. 30.99 *25



\$4 twin, Reg. 6.49
'ULTRA TOUCH' PERCALE SHEETS WITH SATIN TRIM in vanilla, lemon, night blue, sky blue, chocolate, strawberry.
Full, Reg. 8.99 *7 **Queen, Reg. 12.99** *10 **Cases (pr.) Reg. 6.99 4.80**
Matching reversible comforters. Twin, Reg. 29.99 *22 **Full comforter, Reg. 34.99** *27
Queen comforter, Reg. 44.99 *35 **Pillow sham, Reg. 7.49** *6
Twin ruffle, Reg. 11.99 *9 **Full ruffle, Reg. 13.49** 10.50 **Queen ruffle, Reg. 14.99** 11.50



\$12 twin set, Reg. 16.99
LUXURY PERCALE SHEET SETS IN LOVELY FLORAL PRINTS Complete sets include 1 flat and fitted sheet plus 2 cases (twin-1 case).
Full set, Reg. 25.99 *20 **Queen set, Reg. 33.99** *27 **King set, Reg. 39.99** *32
Matching comforter sets complete with comforter, dust ruffle, 2 pillow shams (Twin-1 sham) at one low price.
Twin set, Reg. 44.99 *30 **Full set, Reg. 59.99** *40 **Queen set, Reg. 69.99** *50



Hollofil II
2 for \$9
DUPONT DACRON HOLLOFIL II® PILLOW
 Our best Dupont® pillow with the feel of down. Long lasting and washable.
standard, Reg. 6.99 **Queen, Reg. 8.49** 6.50 **King, Reg. 9.99** 7.50



8.50 twin, Reg. 10.99
'SNUG MATE' MATTRESS PAD Quilted top and sides. Fluffy Trevisa® fill.
Full, Reg. 12.99 10.50 **King, Reg. 19.99** 14.50
Queen, Reg. 14.99 11.50
Save 25% on embroidered dust ruffles, Reg. 13.99-17.99 10.40-13.40



Save 30%
DECORATOR PRINT COMFORTERS
 Choose from a great group of comforters with plush poly fill. Washable.
Twin, Reg. 24.99 17.40 **Full, Reg. 29.99** 20.90
Queen/King, Reg. 39.99 27.90

white sale

Stock-up today on our wide selection of 1st quality linens for your home!



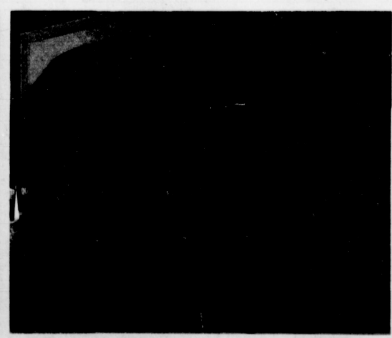
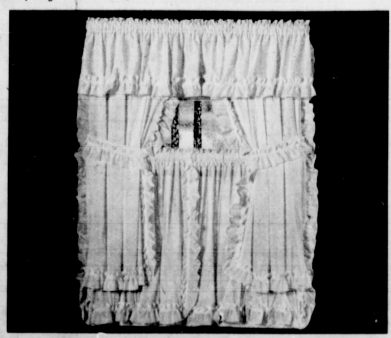
Save 25% on Kirsch rods!
KIRSCH WHITE TRAVERSE RODS Two-way draw. With hardware and instructions.
 28-48" (#1823), Reg. 5.99 4.48
 48-64" (#1825), Reg. 7.99 5.98
 86-150" (#1827), Reg. 12.99 9.72
KIRSCH GLENWOOD TRAVERSE RODS 1" walnut grain look adjustable rod.
 30-50" (#P53), Reg. 13.99 10.48
 48-66" (#P536), Reg. 20.99 15.72
 86-150" (#P536), Reg. 30.99 23.20

ASPEN SELF-LINED DRAPERY Save 4.99-6.99!
 Permanent press woven draperies in natural, fern green, blue or beige. Self-lined to help save energy!
 48"x84", Reg. 16.99 *12 **86"x84", Reg. 37.99** *32
 72"x84", Reg. 28.99 *24 **Patio, Reg. 39.99** *33
 Voile panel curtains in white, natural, brown, blue.
 60"x63", Reg. 6.99 *5 **60"x81", Reg. 7.99** *6

Energy saving draperies! **\$9**
 Aspen 48"x63" Reg. 14.99
 Perma Tex 50"x45" Reg. 15.49

PERMA TEX FOAM-BACK DRAPERY Save 4.99-7.99!
 Martini, rust blue, butterscotch, white, burnt, chocolate.
 50"x63", Reg. 18.99 *14 **75"x84", Reg. 39.99** *34
 50"x84", Reg. 19.99 *15 **100"x84", Reg. 48.99** *42
 75"x84", Reg. 36.99 *31 **125"x84", Reg. 61.99** *54
 Seeded voile curtain panels in 4 colors.
 60"x63", Reg. 6.49 *5 **60"x81", Reg. 6.99** *5

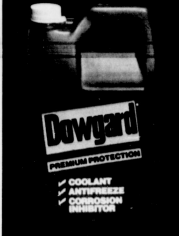
Cape Cod curtains!
\$2 24-inch, Reg. 3.99
SOLID COLOR CAPE COD CURTAINS Save 1.29-1.99!
 Permanent press ruffled Cape Cod curtains with tie backs included. White, yellow or brown. Machine wash.
 30-inch, Reg. 4.29 2.50
 36-inch, Reg. 4.29 *3
 45-inch, Reg. 7.59 *6
 63-inch, Reg. 8.99 *7
 Valance, Reg. 3.49 *2



St. Mary's bedspreads!
\$10 twin, Reg. 16.49
ST. MARY'S RIBBED BEDSPREADS Save 6.49-6.99!
 Brown, blue, red, canary, spearmint. Long wearing cotton/poly. Washable.
Full, Reg. 17.99 *11

Mail-in refund on windshield solvent from Dowgard*!

3.50 gal.
DOWGARD ANTIFREEZE
 Premium protection for your car.
 Reg. 4.39
Windshield solvent, 1-gal. 99*



Buy 1 gallon of Dowgard* Coolant/Antifreeze and any windshield washer solvent. Mail the foil seal from the opening of the Dowgard* jug, the solvent label, the dated cash register receipt with the prices circled, plus this certificate completely filled out. Refund requests must be postmarked no later than February 15, 1982. Receive by mail a refund for the purchase price of the windshield washer solvent (not to exceed \$1.00).
EFFECTIVE DATE: January 1, 1982 **EXPIRATION DATE:** February 15, 1982
 Enclosed are my proof of purchase. Please send my refund to/Please Print
 Name _____
 Address _____
 City _____ State _____ Zip _____
 Note: Only two requests per household, group or organization, and only one request per envelope. This certificate may not be reproduced, traded or sold and must accompany request. Offer rights may not be transferred or assigned. No fleet, dealers or commercial redemption. Offer good only in 50 United States, but void where prohibited, taxed or restricted. Please allow 8 weeks for delivery.
 *Trademark of The Dow Chemical Company.

\$12 pr.

\$35 Save 14.99
2-TON FLOOR SERVICE JACK 360-degree swivel saddle. Makes car repairs easier! Reg. 49.99.
Car ramps, Reg. 18.99 *12

\$1 ea.
YOUR CHOICE OF CAR ACCESSORIES! Auto snack tray (#80), litter basket (#90), oil drain pan (#64), wisk broom with pan (#48), 3-pc. funnel set, (#500, 505-510), Flex 'N' Fill funnel (#525), deluxe funnel (#535), deluxe cup holder (#110), oil spout (#530).

\$45 Reg. 54.99
GOLD CIRCLE 60 MONTH MAINTENANCE FREE BATTERY Heavy duty and dependable. No trade-in required. *22
6-amp. battery charger, Reg. 25.99 *18
16-ft. booster cables, Reg. 9.99

6 qts. for \$4
GOLD CIRCLE 10W40 MOTOR OIL Reg. 85* ea. Limit 12 qts. per customer.
\$2 Fram Oil Filters in sizes to fit most cars. Reg. 2.99

\$1 ea.
YOUR CHOICE OF AUTO CHEMICALS! 15-oz. STP oil treatment, 15-oz. Wynn's Spit Fire Gas Treatment, 15-oz. Wynn's Friction Proofing, 12-oz. Gumout Carb cleaner, 4-oz. Armor All Protectant. Reg. 1.35-1.99

dollar sale

\$7 twin rear Reg. 8.49
CARPETED CAR MATS Black, blue, gold/brown or red. Centura by Rubberqueen.
Twin front, Reg. 10.49 *8
Full front, Reg. 12.99 *10

\$85 Reg. 89.99
FUZZBUSTER III Radar Detector. Includes bracket.

2 for \$5 Reg. 4.49 ea.
1 1/2-TON JACK STAND Tripod base and 3 position height adjustment.

\$15 Reg. 16.99
DRIVING LIGHTS Quartz halogen auxiliary light system with 2 lights, wiring kit, switch.

\$1 ea. Reg. 1.49
ICE SCRAPERS Heavy duty snow brush/scraper or bear claw ice scraper.

\$10 Reg. 12.99
DIGITAL CLOCK 5-function quartz LCD digital clock from Network mounts in dash.

\$4 Reg. 5.99
SHEEPSKIN-LOOK WEDGE Adds comfort or height when you're driving (#5082).

\$16 Reg. 22.99
CUSTOM WIRE WHEEL COVERS Cal Wire wheel covers, triple chrome plated. 12, 13, 15".

\$6 2-ton Reg. 10.99
HYDRAULIC BOTTLE JACKS 4-ton, Reg. 14.99 *12
 6-ton, Reg. 18.99

\$13 Reg. 18.99
VACUUM CLEANER for your car. With attachments. Plugs into cigarette lighter.

\$3 Reg. 3.99-4.29
WIPER BLADES, REFILLS 1-pk. wiper blade or 2-pk. refills.

\$3 Rubber Reg. 4.79 *5
SPLASH GUARDS Many styles, colors from Grabowski.

3 for \$1 Reg. 49¢ ea.
AIR FRESHENERS Fresh fruit scented air fresheners for your car.

\$2 1-gal. **\$3** 2-gal. **\$6** 5-gal.
GASOLINE CANS Lightweight and safe. Reg. 2.49-7.99

\$40 Reg. 59.99
80-TUNE MUSICAL HORN With P.A. hardware and instructions.

3 for \$2 Reg. 79¢-1.19 ea.
WINTER AUTO NEEDS Starting fluid, spray de-icer or lock de-icer.

\$5 Reg. 8.99
FOOT PUMP Easy to use. Pumps up to 100 psi.

SPECIAL OFFER!
 Buy any style G.E. halogen replacement light, install in coupon and get \$2 rebate from G.E. Details in store.
\$6-\$13 after rebate
G.E. HALOGEN replacement lights. #H4001, #H4651, #H4656, #H5006, Reg. 9.99, Sale '8. #H6014, #H6052, Reg. 19.99-21.99, Sale '15.



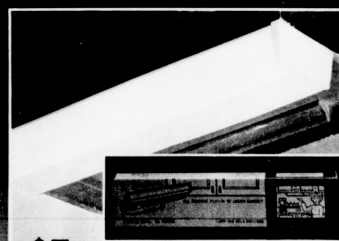
\$1 ea. **ROYAL TOOLS!** 2-pc. rubber grip screwdriver set, 5-pc. saber saw blade set (#105), 5-pc. open end wrench set (#601), 1/2"x6" steel tape measure (#173), 13-pc. drill set (#180), 6' folding wood ruler (#170), 16-oz. steel hammer (#558), 5-pc. jeweler's screwdriver set, wire stripper (#495) and much more! Reg. 1.69 ea.



\$2 ea. **ROYAL TOOLS!** 8" slip joint pliers (#688), rubber mallet (#541), 6 1/2" long nose pliers (#404), 16-oz. tubular steel claw hammer, 6-pc. rubber grip screwdriver set (#531), 3-pc. rubber grip screwdriver set (#1695), 8" adjustable wrench (#133), 10-ft. steel tape measure (#166), tubular hack saw (#355), metal cutting shears (#717) and much more! Reg. 2.99 ea.



\$11 Save 5.99 on 4-ft. fluorescent light!
LITEWAY® FLUORESCENT LIGHT FIXTURE WITH BULBS Complete with cord set, plug and chain set, two 40 watt rapid start bulbs. Reg. 16.99



\$5
LITEWAY® 18" UNDER CABINET LIGHT Assembled and easy to mount. Reg. 7.99

Shop early Sunday 9am!



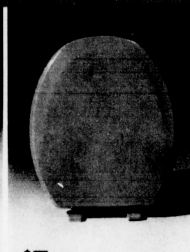
\$8 Reg. 10.99
25" G.E. BRIGHT STIK®
Needs no special wiring or fixture.



\$3 Reg. 5.99
8 1/2" CLAMP LIGHT



\$10 Reg. 13.99
4" BATHROOM FAUCET
Acrylic handles, aerator.



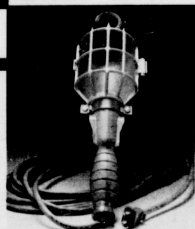
\$7 Reg. 12.99
MAGNOLIA TOILET SEAT



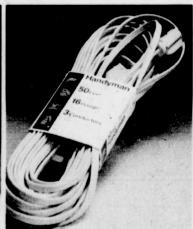
\$4 Reg. 6.99
TOILET TANK REPAIR KIT



\$17 Reg. 25.99-27.99
UTILITY TUB
2-handle tub faucet, Reg. 23.99-15



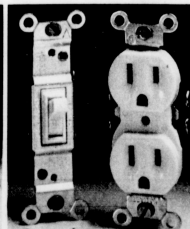
\$4 Reg. 7.99
25' TROUBLE LIGHT



\$5 Reg. 8.99
50' EXTENSION CORD
100' extension cord, Reg. 14.99-15



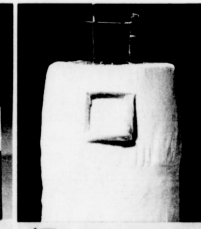
\$1 ea. Reg. 1.29-1.89
ELECTRIC AIDS Night light, drywall box, 9' extension cord.



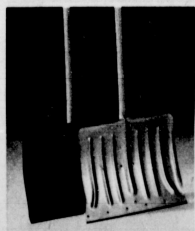
2 for \$1 ea. Reg. 85¢-1.09
ELECTRIC AIDS Toggle switch, duplex receptacle, medium handy box.



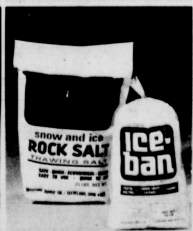
REBATE!
1.00 sale price
Reg. 1.50
-.50 mail-in rebate
.50 cost after rebate
.50 after rebate
3-PK. FURNACE FILTERS New Dust Stop® Air Handler® filters. No rainchecks. 200 pks./store.



\$7 Reg. 12.99
HOT WATER TANK COVER RS-77 insulating jacket fits gas or electric heaters up to 60-gal. No rainchecks. 40/store.



\$3 steel shovel, Reg. 5.99
\$4 aluminum shovel, Reg. 7.99
SNOW SHOVELS No rainchecks. 60/store.



2 for \$3 Reg. 2.49-2.79 ea.
ICE MELTERS 10-lb. Ice-Ban or 25-lb. rock salt. No rainchecks. 50/store.



2 for \$3 Reg. 2.49 ea.



REBATE!
10.00 sale price
Reg. 14.99
-3.00 mail-in rebate
7.00 cost after rebate
\$7 after rebate
SMOKE DETECTOR From Family Guard®



\$1 ea. Reg. 1.69-1.99
RAY-O-VAC BATTERIES One 9-volt or 2-pk. D, C or AA (alkaline batteries).



\$9 A1-10BC, Reg. 14.99
FIRE EXTINGUISHERS 2A-40BC, Reg. 22.99-15 10BC, Reg. 9.99-15

1¢ sale

Buy one gallon of Gold Circle wall or ceiling paint for 6.99, get a second gallon for only 1¢!



GOLD CIRCLE LATEX WALL OR CEILING PAINT. Easy-to-apply, quick-drying, washable finish. Water clean-up. Many designer colors to choose from. Reg. 6.99 gal.

\$9 Reg. 12.99
4-SHELF UNIT
 Steel construction.
 12x30x61"
 5 shelf unit.
 Reg. 22.99... **16**

3 for \$2
 Reg. 1.29 ea.
SUPER GLUE
 Easy-to-apply.
 Dries instantly.
 From Duro*.

\$25 **DECORATOR PHOTOMURALS**
 Easy-to-hang. 8'6" x 13'5". Adhesive included. Reg. 29.99.

\$1 **12 X 12" CORK SQUARES** 4-pk. of dark brown cork. Reg. 1.79.

\$15
 Reg. 19.99
5-FT. LADDER
 Wood construction.
 Lightweight.

3 for \$2
 Reg. 1.59 ea.
8-QT. STIM-U-PLANT SOIL
 All purpose potting soil.

\$18
 Reg. 26.99
7-SHELF PLANT STAND Solid hardwood. Easy-to-assemble.
27" fern stand, Reg. 6.99... 14

\$3
6" HANGING PLANTS Choose from many hardy varieties.
4" plants... 11

dollar sale

clearance!
50% off
 our orig. prices on all fall and winter
sweaters and
outerwear
Men's! Women's! Children's!

Plus! 50% off our original prices on these other items:

- Skirts
- Blazers
- Pants
- Shirts
- Warmly-lined and plush slippers
- Warmly-lined footwear
- Boxed costume jewelry
- Jewelry boxes
- Boxed ladies accessories
- Gloves, hats, scarves
- Cosmetic soap and potpourri
- Leather handbags
- Boxed socks

NO RAINCHECKS

\$5 ea. Our great looking sweatshirt coordinates!

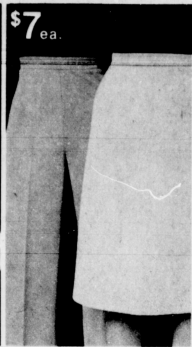


FLEECE ACTIVEWEAR IN BRILLIANT COLORS FOR MEN, LADIES AND GIRLS!
 • Ladies' v-neck or crewneck sweatshirt and drawstring pants. S-M-L. Reg. 7.99 ea.
 • Men's solid color crewneck sweatshirts or sweatpants. S-M-L-XL. Reg. 7.99 ea.
 • Girls' 7-14 mix and match sweatshirts and sweatpants. S-M-L. Reg. 6.99 ea.



\$7

MISSIE BOW BLOUSES Solid colors in easy-care 100% polyester. 10-16. Reg. 8.99



\$7 ea.

CAPE COD MATCHMAATES Pants or skirts in Dacron® polyester. Reg. 8.99. Blazers, Reg. 20.99



\$16

STRETCH DENIM JEANS that move when you do! Many styles. 3/4-15/16 or 6-18. 95% cotton/5% Spandex. Reg. 22.99



\$12

Wrangler

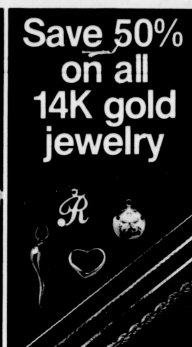
MEN'S WRANGLER® JEANS "No Fault" boot cut. Jeans of 100% cotton denim. Sizes 29-40. Reg. 16.99.



\$7 jeans

\$6 shirts

GIRLS' 7-14 JEANS, SHIRTS Reg. 8.99 ea.
Girls' 4-6x pants, Reg. 5.99 4
4-6x shirts, Reg. 5.99-6.99 5



Save 50% on all 14K gold jewelry

9.99-99.99 chains, charms, earrings! Reg. 19.99-199.99. Also! **Save 60%** on selected 14K gold pieces!



\$8 ea.

PLUS SIZE SPORTSWEAR Poly pull-on pant, 32-40, or v-neck print top, 38-46. Reg. 9.99 ea.



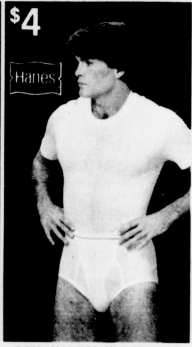
\$4

PLUS SIZE KNIT TOPS Cowl neck tops in easy-care 100% acrylic. 40-46. Reg. 7.99



Save 15%

7.64-11.89 MATERNITY fashions! Entire stock of tops, slacks and jeans! 8-16, S-M-L. Reg. 8.99-13.99



\$4

3-PK. HANES® UNDERWEAR Men's briefs, 28-44, or t-shirts, v-necks, A-shirts, S-M-L-XL. Cotton. Reg. 5.79.



\$4 tops

\$10 jeans

Wrangler

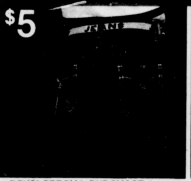
BOYS' 8-16 SPORTSWEAR Sweatshirts, knit shirts and more plus Wrangler® jeans. **Wrangler's, 25-30, Reg. 15.99** 12



Save 30% off the manufacturer's list price on Timex® watches!

We discount Timex® 10% every day...now save even more for a total 30% savings! List price 16.95-59.99.

Shop early Sunday 9am!



\$5

BOYS' SPECIAL PURCHASE denim jeans. Western style, embroidery trim. Sizes 4-7. No rainchecks.



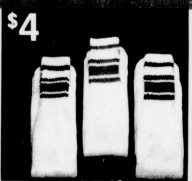
\$3

3-PK. BOYS' HANES Cotton t-shirts or briefs. Sizes 4-6, 8-18. Reg. 4.19.



\$1

BIKINIS AND BRIEFS Entire stock of novelty prints. Sizes 5-7. Reg. 1.19-1.89. Not all styles in all stores.



\$4

6-PK. BOYS' TUBE SOCKS White with stripes. Sizes 5-6 1/2, 7-8 1/2, 9-11. Reg. 5.49.



\$2

3-PK. GIRLS' PANTIES Solid pastels and prints in cotton/poly blend. 2-14. Reg. 2.99



\$1 pr.

GIRLS' SOCKS Cable and opaque knee highs or sport socks. Reg. 1.19-1.39.



2 for \$1

EVENFLO® bottles or nipples in 4 sizes. Reg. 69¢-79¢ ea.



3 for \$2

INFANT BOOTIES Knits and terry in solids, stripes, some embroidered. Reg. 99¢ ea.



\$2 ea.

BABY NEEDS Shirts, sleep n' plays, gowns, kimonos, towels. Reg. 2.99 ea.



\$3 ea.

REIGEL® BABY NEEDS Crib sheets, receiving blankets, towels, more! Reg. 3.99-4.99 ea.



\$5 to \$9

INFANT AND TODDLER overalls. Denim or twill. Reg. 5.99-10.99. Toddler shirts. Reg. 2.49-5.49 12-13.



\$4 ea.

BABY FURNITURE Plastic potty, diaper pail, bath tub, step stool, gate, carrier. Reg. 3.99-5.99



\$9

TERRY WRAP ROBE Short stretch terry robe with white satin piping. Misses S-M-L. Reg. 11.99



\$5

MISSIE SHIRT JACKET Polyester. 34-38. Reg. 6.99. Plus sizes 40-48, Reg. 7.99 4



\$5

MISSIE PLAID SHIRTS Button front. Poly/cotton blend. 10-16.



3.50

MISSIE SWEATERS Fine knit tops in poly or acrylic. S-M-L-XL. Reg. 6.99



\$8

WOVEN STRETCH PANTS Texturized polyester pull-on style. 8-16. Pet., 10-20 avg. Reg. 10.99.



\$4

6-PK. MEN'S TUBE SOCKS Orion® over-the-calf style. Sizes 10-13. Reg. 5.49



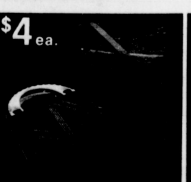
\$3

TERRY SCUFF SLIPPER Women's slipper with satin lining. Sizes S-M-L-XL. Ass't colors. Reg. 3.99



2 pr. for \$5

WOMEN'S "POPSICLES" Assorted colors. Sizes 5-10. Reg. 3.99 pr.



\$4 ea.

CANVAS HANDBAGS Shoulder styles, clutches, multi-compartments, more. Reg. 5.99 ea.



2 for \$4

PRINCE MATCHABELLI® Cachet, Windsor or Avance 1-oz. cologne sprays. Reg. 2.75-2.95 ea.



\$2 tights

\$5 leotards

LEOTARDS OR TIGHTS Black, brown, navy, wine. Leotards, Reg. 5.99-6.99. Tights, Reg. 2.69-2.99



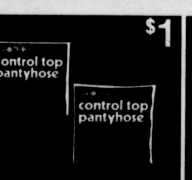
\$1

MEN'S SOCKS White tube socks or Orion® crew socks in asst. colors. 10-13. Reg. 1.29



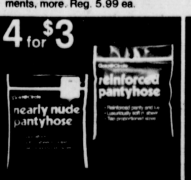
2 for \$3

ENKLURE® CONTROL TOP pantyhose in beige, taupe, tan. 2 Pk., avg. tall. Reg. 1.99



\$1

MEDIUM CONTROL TOP pouch pantyhose in beige, taupe, tan. 2 sizes. From GC. Reg. 1.49



\$1

GC POUCH PANTYHOSE Nearly nude Sandalfoot or Reinforced Toe styles. Reg. 99¢ ea.



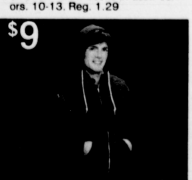
2 cards \$3

PIERCED EARRINGS 5 or 6 prs. of earrings per card. Not all styles in all stores. Reg. 3.99 ea.



\$11 ea.

LCD WATCHES Men's, women's. 5-function with backlight. Gold, silver tone. Reg. 15.99 ea.



\$9

HOODED SWEATSHIRT Zip-front in assorted solid colors. Men's S-M-L-XL. Reg. 11.99



4 for \$7
CAT'S PRIDE CAT LITTER 25-lb. Reg. 2.29 ea.



2 for \$3
GOLD CIRCLE TRASH BAGS 30-ct. 13-gallon kitchen bags, 8-ct. heavy duty trash bags or 20-ct. 26-gallon trash bags. Reg. 1.89-2.49 ea.



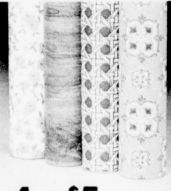
\$3 ea. after rebate
O'CEDAR MOPS AND BROOMS Light and Easy wet or sponge mop, angler broom, corn broom, country kitchen broom, cotton dust mop.



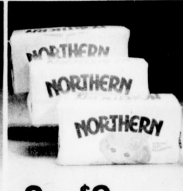
\$1 ea.
HOUSEHOLD CHEMICALS 32-oz. Liquid Plumr, Automatic Vanish, 48-oz. Crystal Vanish, 17-oz. Dow Bathroom Cleaner, 32-oz. Fantastik, Easy-On Spray Starch. Reg. 1.19-1.59.



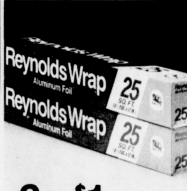
\$1 Reg. 1.49-1.59
STORAGE BOXES Utility or underbed sizes. Woodgrain fiberboard.



4 for \$5 Reg. 1.99 ea.
CONTACT PAPER Self-adhesive. 3 yards.



3 for \$2 Reg. 79¢ ea.
140-CT. NORTHERN NAPKINS



2 for \$1 Reg. 59¢ ea.
25-FT. REYNOLDS' WRAP



4 for \$5 Reg. 1.69
100-CT. DIXIE® PAPER CUPS Star Wars® design. 5-oz.



2 for \$1 Reg. 79¢ ea.
GRIP-TIGHT HANGERS



\$8 Reg. 9.99
FOLDING GARMENT RACK With hat rack, shoe rail.



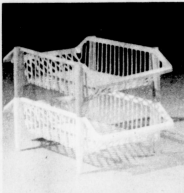
5 for \$9 Reg. 2.69 ea.
40-CT. BOUNCE



\$3 Reg. 3.99
64-OZ. WISK



2 for \$1 Reg. 79¢ ea.
RENUZIT SOLID Air Fresheners. 7.5-oz.



2 for \$3 Reg. 1.99 ea.
STORAGE BASKETS White, chocolate or yellow plastic.



5 for \$4 Reg. 1.09 ea.
1-GAL. CLOROX BLEACH

dollar sale



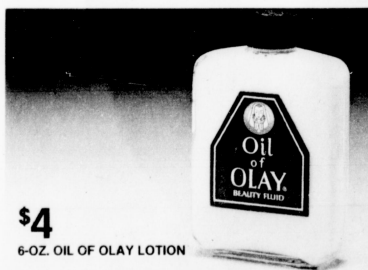
4 for \$5
VIDAL SASSOON HAIR CARE PRODUCTS 8-oz. shampoo for normal hair or 8-oz. finishing rinse. Protein Pac Treatment. **2 for \$3**



\$1
SAVE ON PERSONAL CARE PRODUCTS 7-oz. Rave hair-spray, 15-oz. Calgon bath oil beads or bubble bath, 8-oz. Rosemilk skin lotion, twin pack Messingill Disposable Douch.



2 for \$3
BABY PRODUCTS FROM VASELINE INTENSIVE CARE 24-oz. powder, 16-oz. shampoo, 16-oz. lotion or 16-oz. oil.



\$4
6-OZ. OIL OF OLAY LOTION



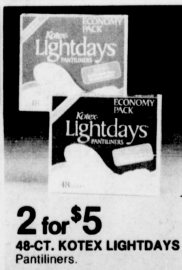
2 for \$5
13-OZ. KERI LOTION Regular or unscented.



2 for \$3 Reg. 2.19 ea.
24-OZ. SIGNAL MOUTH-WASH



3 for \$5
32-CT. TAMPAX tampons. Super, Super Plus, Regular.



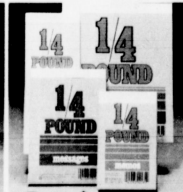
2 for \$5
48-CT. KOTEX LIGHTDAYS Pantliners.



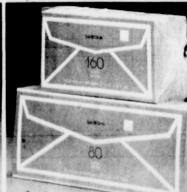
3 for \$2 Reg. 99¢ ea.
FILLER PAPER 150-ct.



2 for \$1
SCHOOL SUPPLIES 60-ct. thermobooks Reg. 79¢ ea. or Eraser Mate 2 erasable pen Reg. 89¢ ea.



2 for \$1
NOTE PADS Assorted sizes.



\$1 ea.
GC ENVELOPES 160-ct. personal or 80-ct. business size.



2 for \$3 Reg. 1.99-2.19 ea.
BITE SIZE CANDY BARS Mounds, Almond Joy, York Peppermint Pattie, Charleston Chew.



3 for \$1 Reg. 40¢ ea.
VELAMINETS Choice of 4 flavors.

Gold@Circle

Open early Sunday 9 am to 6 pm
 Shop Monday through
 Saturday 10 to 10

In order to serve everyone, we reserve the right to limit quantities. Sorry, no sales to dealers.



Use your Visa or MasterCard