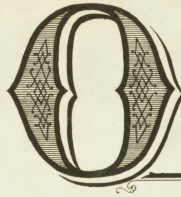


Population, 12,000. Preventing Wounds Nest.
Water Filtration, Holly system, 2 large Pumps, Cap-
acity, 2 Million Gallons per 24 Hours. 10 Miles Water
Pipes. 25 Hydrants. Pressure 45 lbs per sq inch.
Fire Department. 1 Steam Fire Engine. 1 Hose Cart.
3 Horses. 1000 Ft. good Hose. Department Paid.



Owensboro

KENTUCKY

SANBORN MAP & PUBLISHING CO.

117 Broadway, New York

SCALE 50 FT. TO AN INCH

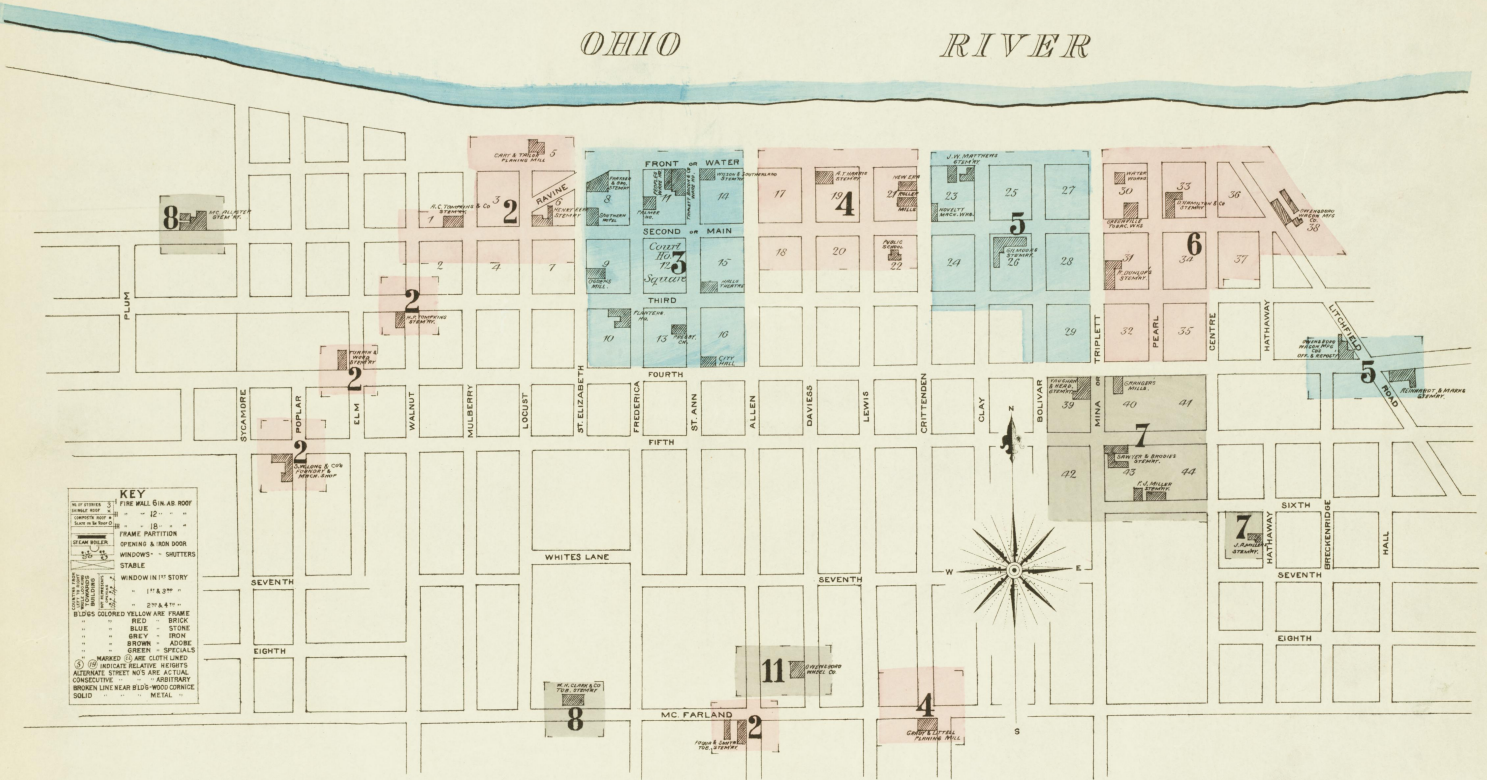
JUNE, 1885

Owensboro, Ky. June 4th 1885
The undersigned Agents of Owensboro, Ky. have
examined the "Sanborn Map of This City made
by the Sanborn Map & Publishing Co. of New
York, and find it to be correct and complete.
We would recommend its use to all companies
having agencies in the City

J. R. Kidd & Son
Mayberry Buckner & Co.
Fred W. Clarke
Watkins & Carter
Parrish, Courtney & Co.
Austin Berry

OHIO

RIVER



INDEX.

STREETS.		SPECIALS.	
A	Allen, Front to Third	A	Applegate, C. L. Distillery
B	Bolivar, Front to Fourth	B	Bary, J. H., & Co. Stemmery
C	Centre, Front to Third	B	Berry, E. C. Distilling Co.
D	Davies, Water to Third	C	Breidenbach, A. Brewery
E	Fifth, Bolivar to Centre	C	Cary & Taylor, Planing Mill
F	Fourth, St. Elizabeth to Allen	D	Catholic Church
G	Front, Frederica to Allen	D	City Foundry & Machine Works
H	Hathaway, Front to Third	E	Clark, W. H., & Co. Stemmery
I		E	Chiff Falls Distilling Co.
J		F	Court House
K		F	Cruss & Chapman, Stemmery
L		F	Cumberland Presbyterian Church
M		G	Davies Co. Distilling Co.
N		G	Dunlop, R., Jr. Stemmery
O		H	Eagle Distillery Co.
P		H	Gas Works
Q		H	Gilmer, A. Stemmery
R		I	Grady & Littell, Planing Mill
S		I	Granger Mills
T		J	Hall's Theatres
U		J	Hamilton, D., & Co. Stemmery
V		J	Hanning, J. Distilling Co.
W		K	Harris, A. T. Stemmery
X		K	Hill & Hill, Distillery
Y		L	Hunter's Hotel
Z		L	Kelly, C. F., & Co. Wagon Works
		L	Kerr, H. Stemmery
		M	Long, S. W., & Co. Machine Works
		M	Lumpkin, W. J., Roller Mills
		M	McAllister, Stemmery
		N	Martingale & Co. Distillery
		N	Massie, J. Stemmery
		N	Miller, J. A. Stemmery
		N	Monarch, R., & Co. Distillery
		N	Monarch, R., & Co. Warehouses
		O	Neal Hotel
		O	New Era Roller Mills
		O	Novelty Machine Works
		O	Ogden's Flour Mill
		O	Old W. S. Stone Distillery
		O	Osborn, J. R., & Son, Planing Mill
		O	Owensboro Distilling Co.
		O	Electr. Light & Power Co.
		O	Lumber Co's Yard
		P	Palmer House
		P	Planters' House
		P	Presbyterian Church
		R	Reinhardt & Marks, Stemmery
		S	Sawyer & Brodie, Stemmery
		S	Small & Kennedy
		S	Sour Mash Distilling Co.
		S	Southern Hotel
		S	Sweeney Block
		T	Taylor, T., & Co. Stemmery
		T	Terrill, J. C. Flour Mills
		T	Thixton, J. C. Distilling Co.
		T	Tompkins, A. C., & Co. Stemmery
		T	H. P. Stemmery
		T	Triplett, Bacon & Co. Warehouse
		T	Turpin & Wood, Stemmery
		V	Vaughn & Head, Stemmery
		W	Welch, J. T. Distilling Co.
		W	Williams & Peoples Wharf Boat Co.
		W	Wilson & Sutherland, Stemmery

* Indicates only one side of Street shown.

JUNE 1885
OWENSBORO
KY.

Ohio River

No exposure.

5TH ST.

Machine Shop

CITY FOUNDRY & MACH. WORKS
SHELLING CO.
POWER, STEAM, PULVERIZ.
NO LIGHTS, HIGH SMOKE IN
20 FEET OF MACH. SHOP
NO WARE HOUSE STEAM
PIPE & WHEELS

POPULAR ST.

Small and
of Lumber.

3

CARY AND TAYLOR
PLANING MILL
PLANING STEAM, FEEL, CURE & SHARPENING
NO LIGHTS, NO WHEELS, NO WAREHOUSE
NO PUMP OR HOSE

5

RAVINE

HENRY KERR
TOBACCO STEMMERY

6

MAIN OR 2ND ST.

No exposure

A. C. TOMPKINS AND CO
TOBACCO STEMMERY

1

WALNUT

SATH. CHURCH
01' TO 200'

2

Vacant

MULBERRY

4

LOCUST

CHAR. F. KELLY & CO

7

ST. ELIZABETH

THIRD ST.

H.P. TOMPKINS
TOBACCO STEMMERY

WALNUT ST.

FOURTH ST.

CHURCH

TURPIN & WOOD
TOBACCO STEMMERY

ELM

MC FARLAND ST.

FURQUAN & SMITH
TOBACCO STEMMERY

Vacant 1/2 Mile

ALLEN

Scale of Feet

108. SHEET

SEE

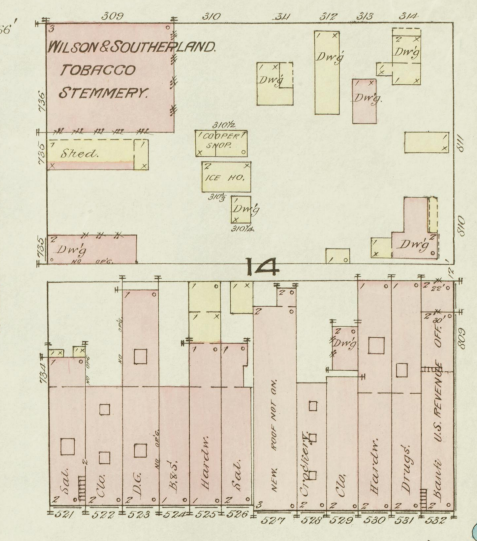
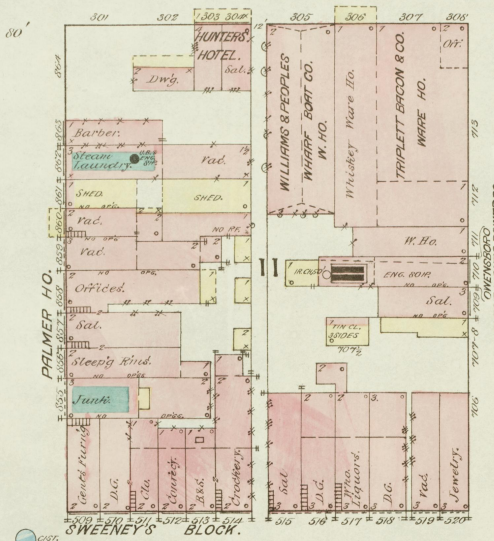
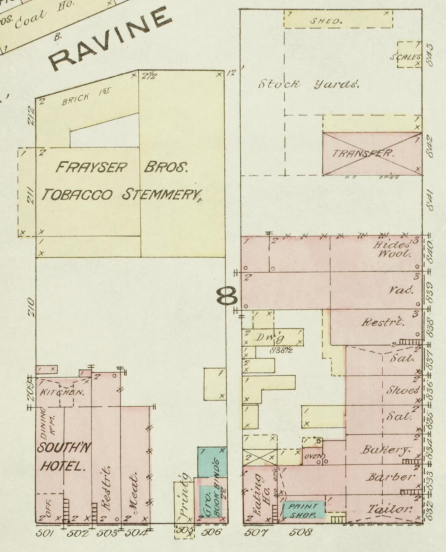


Ohio Levee.
WATER OR FRONT

JUNE 1885
OWENSBORO
KY.

3

NO. 2.
SHEET



NO. 4.
SHEET

SEE

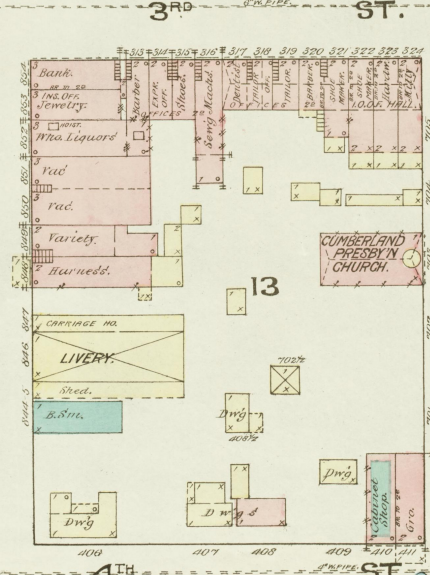
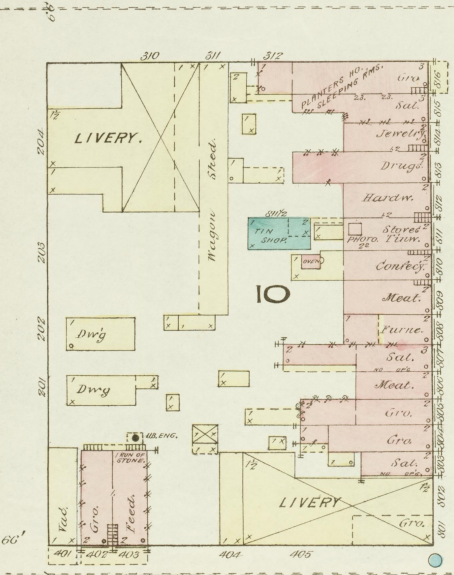
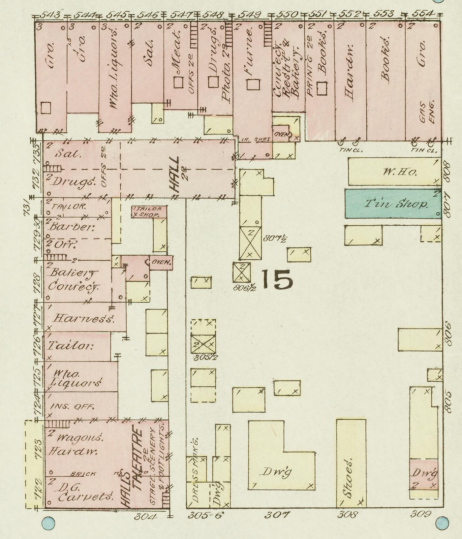
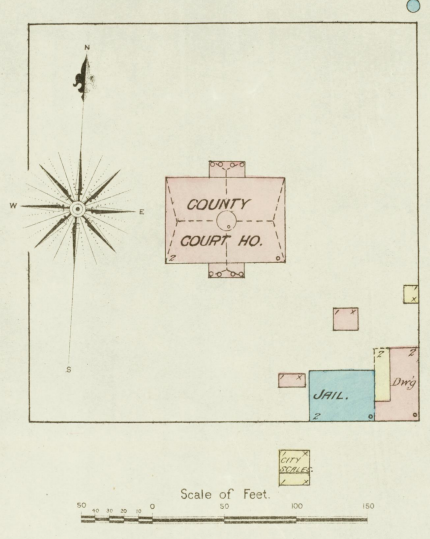
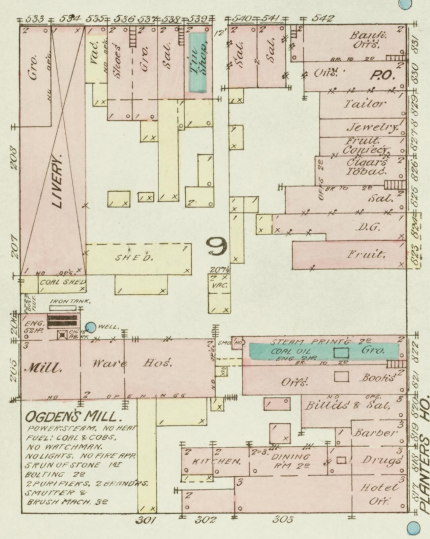
MAIN OR 2ND ST.

ST. ELIZABETH

FREDERICA

ST. ANN

ALLEN



4TH ST.

DETACHED FR. DWGS OPPOSITE.

WATER OR FRONT

NEW ERA ROLLER MILLS
W. J. LUMPKIN, PROP.

STEAM POWER, FUEL COAL & COKE,
LIGHTS, COAL OIL, 2 STONES IN MILL
NO. WATERWHEEL, 12 SET. PULVERIZERS
1 TON OF STONE FE. COAL SHRELLER 14
REARLY FULL 25. BUILDING 25
EXCESSIVE DRYING 25
CENTRIFUGAL FEEL 25

JUNE 1885
OWENSBORO
KY.

SEE SHEET NO. 3. ALLEN

DAVISS

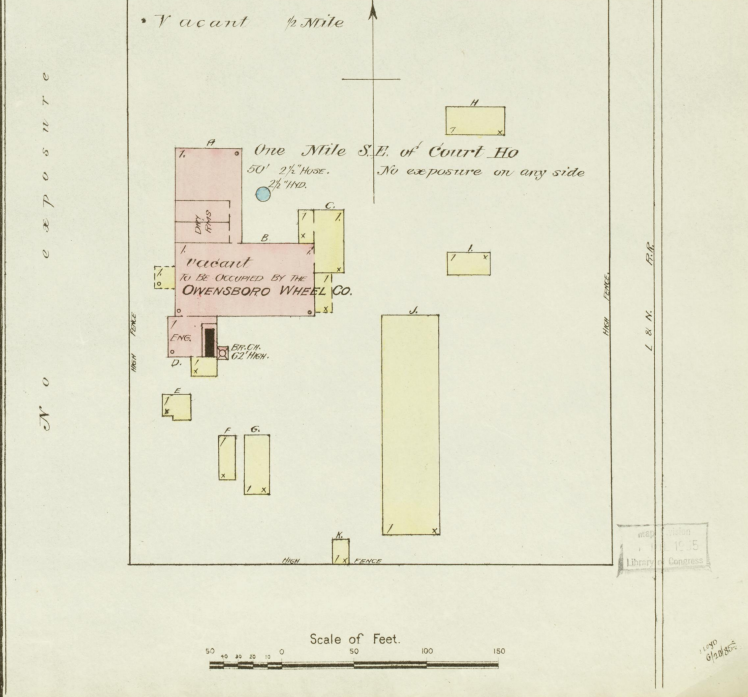
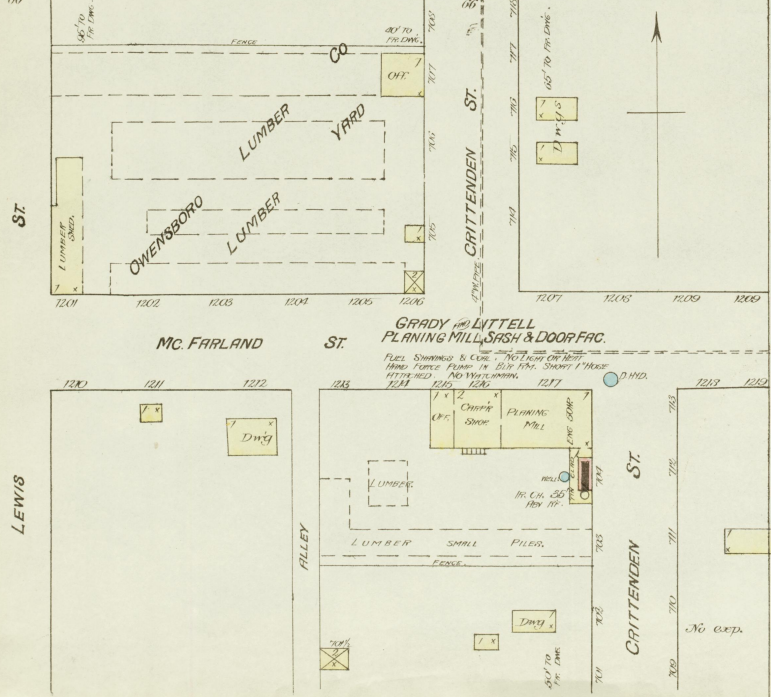
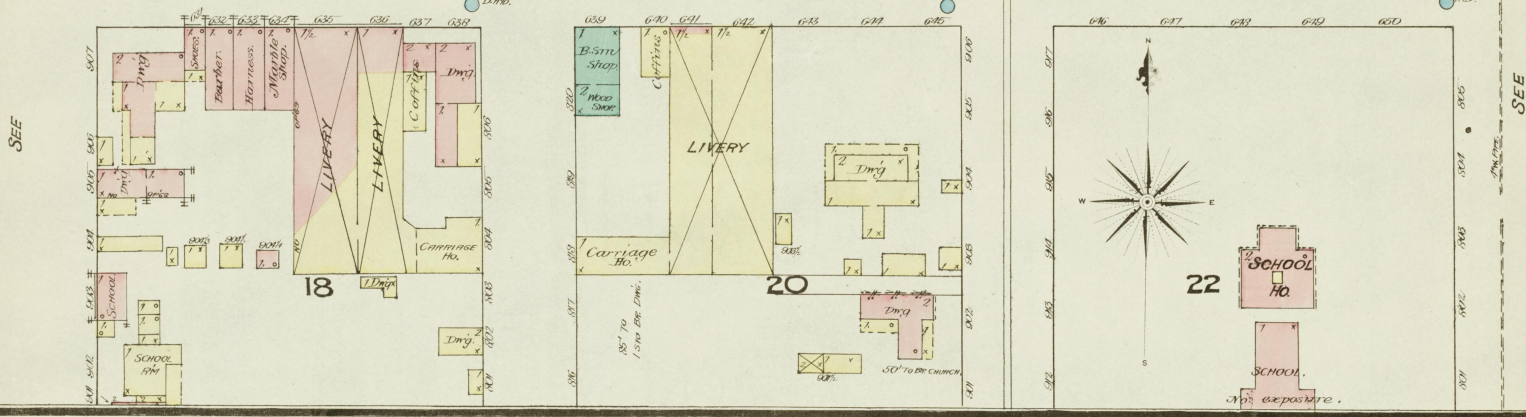
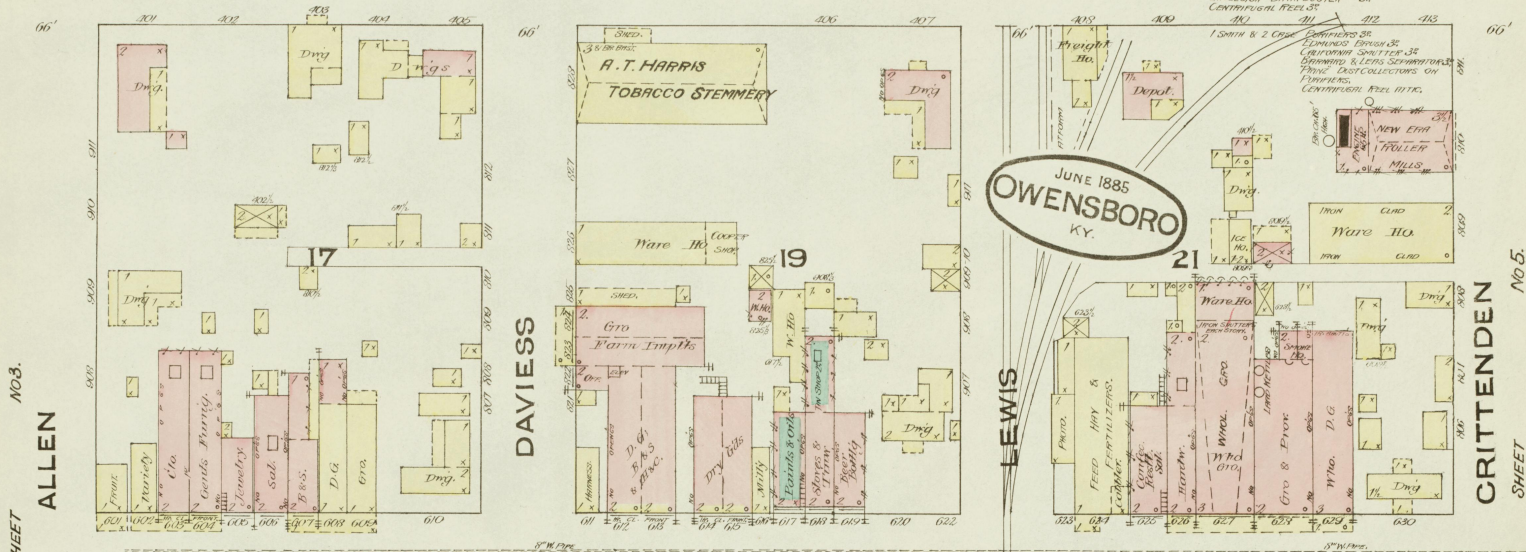
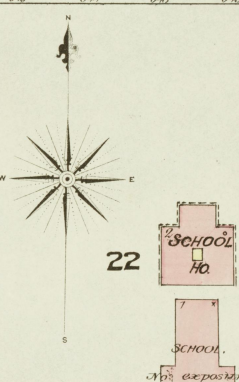
LEWIS

CRITTENDEN SHEET No. 5.

MAIN OR 2ND ST.

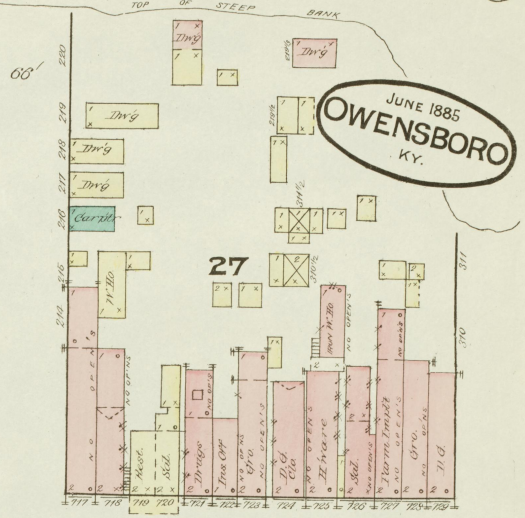
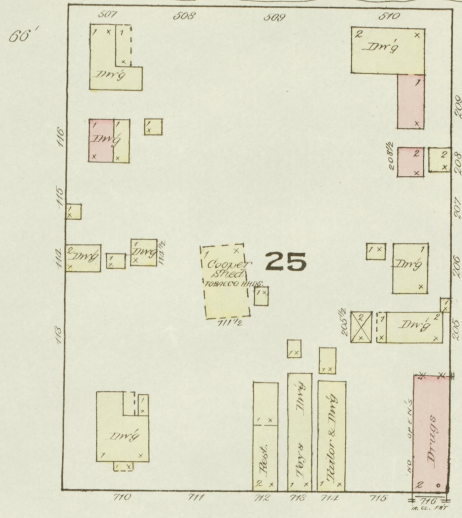
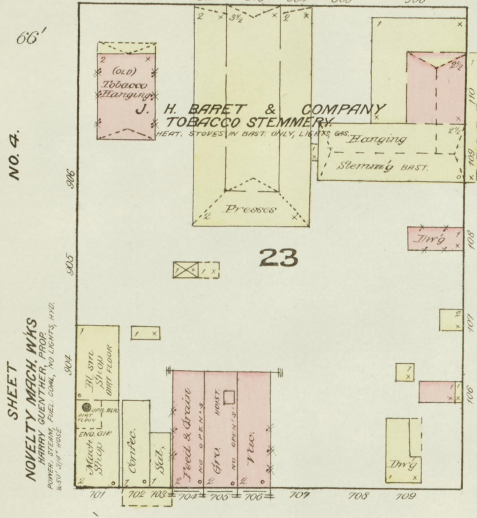
SEE

SEE

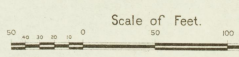
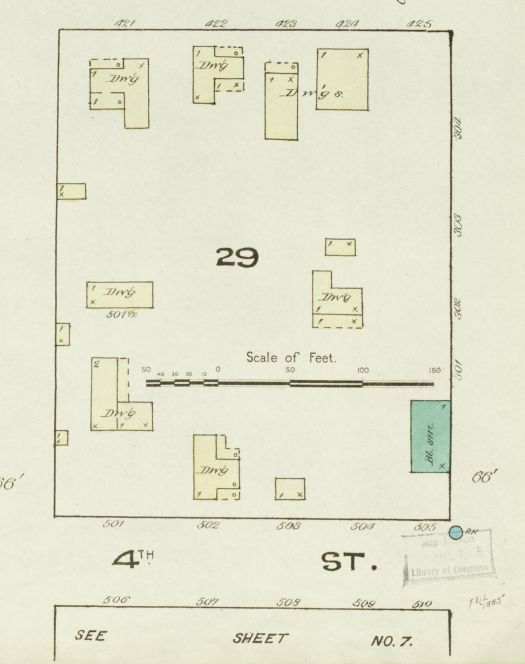
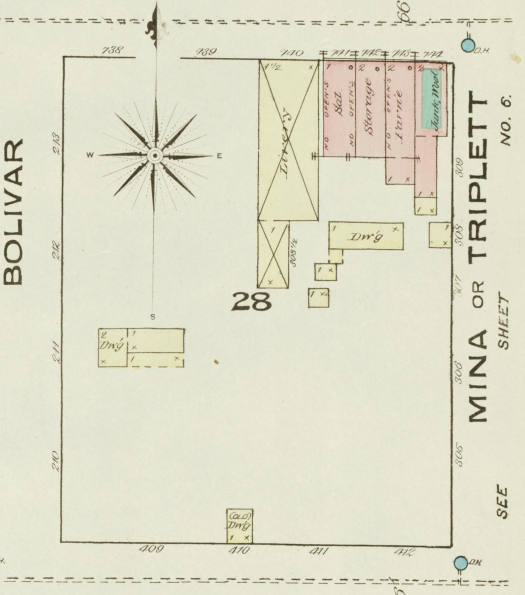
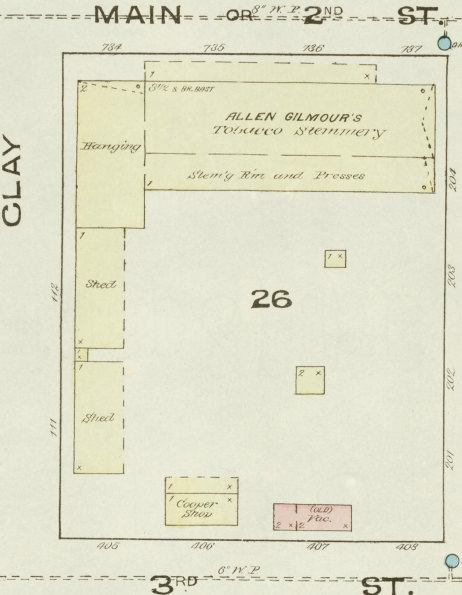
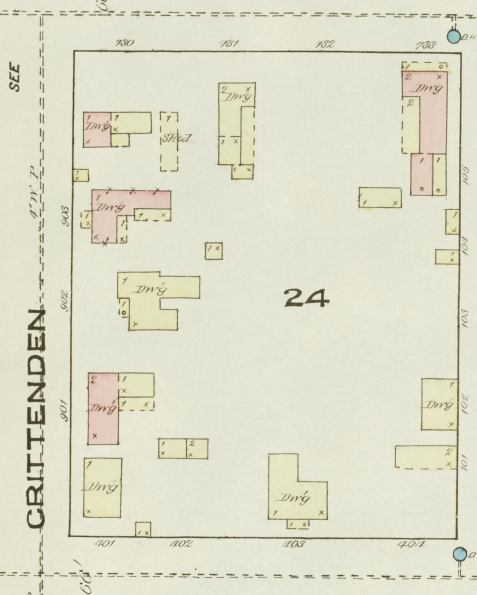


Scale of Feet. 0 50 100 150

OHIO RIVER BEYOND
WATER OR FRONT



JUNE 1885
OWENSBORO
KY.



FRONT OR WATER

MAIN OR 2ND ST.

3RD ST.

4TH ST.

CITY WATERWORKS
Holy System
30

GREENVILLE
TOBACCO WORKS
NEEL HO.

R. DUNLOP JR.
TOBACCO STEMMERY

32

Formerly Livery Stable,
Wood and Blacksmith Shop.

33

D. HAMILTON & CO.
TOBACCO STEMMERY
store & stemmer.

34

LIVERY

35

35

JUNE 1885
OWENSBORO
KY.

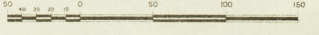
37

38

OWENSBORO
WAGON MFG. CO.

POWER STEAM, NO LIGHTS OR HEAT,
HATCH & SUNDRY WATCHES,
400' STEEL HOSE AT WAGON IN
REAR OF BOLLER NO. 11' X 10' X 50'
HOSE IN BOLLER ROOM.

Scale of Feet



THIS SHEET.
OWENSBORO
WAGON CO.
SEE
HATHAWAY

SEE SHEET
N^{OS}.
MINA OR TRIPLETT

SEE SHEET

N^o 7.

S. 1884.

SEE SHEET NO. 5.

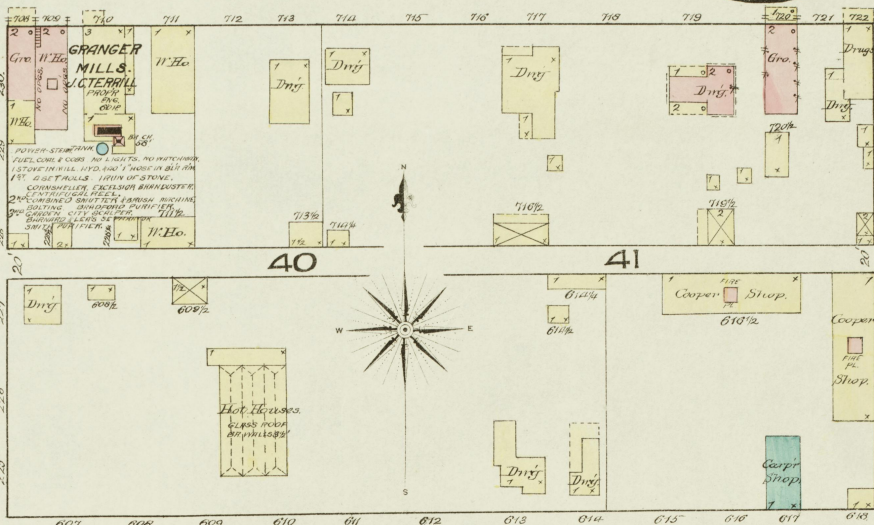
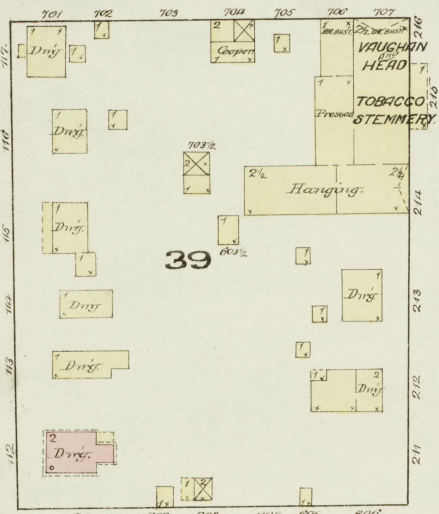
SEE SHEET

PEARL ST. NO. 6.

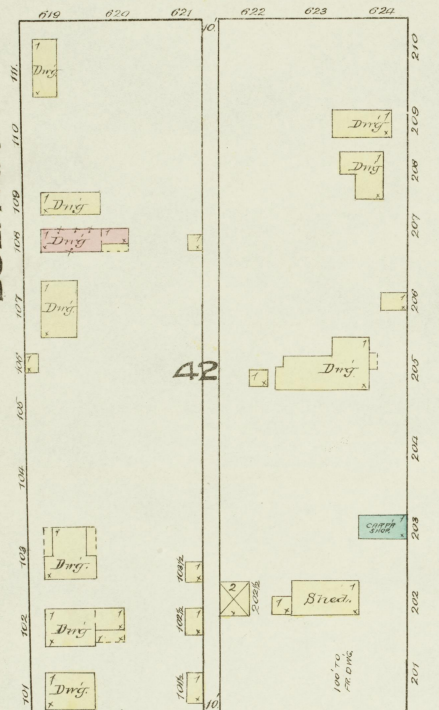
JUNE 1885
OWENSBORO
KY.

7

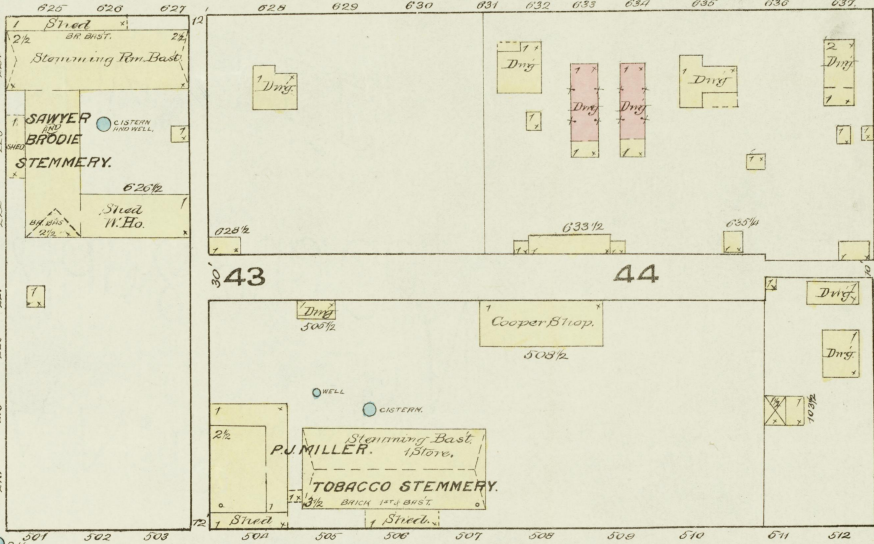
4TH ST.



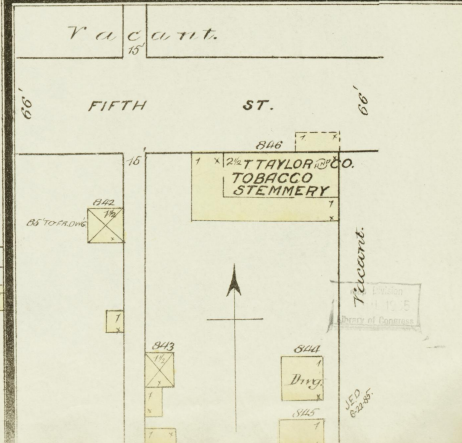
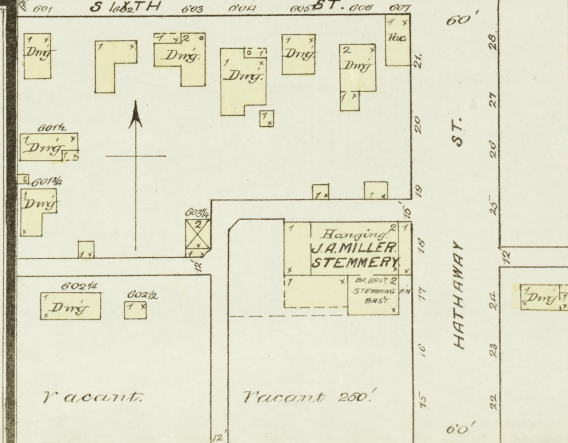
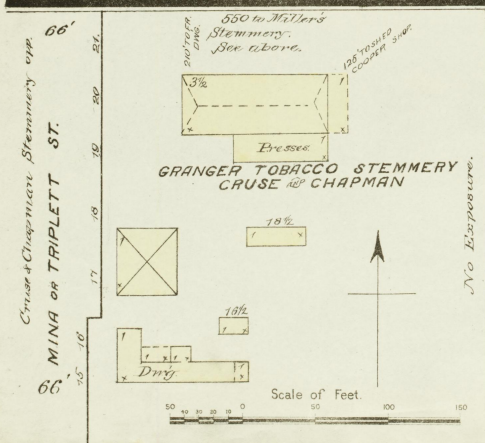
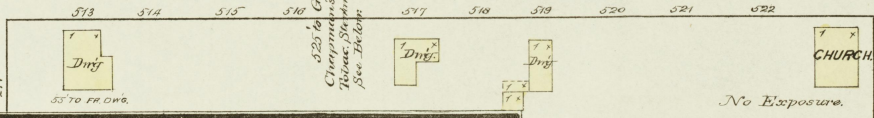
5TH ST.



MINA OR TRIPLETT



6TH ST.

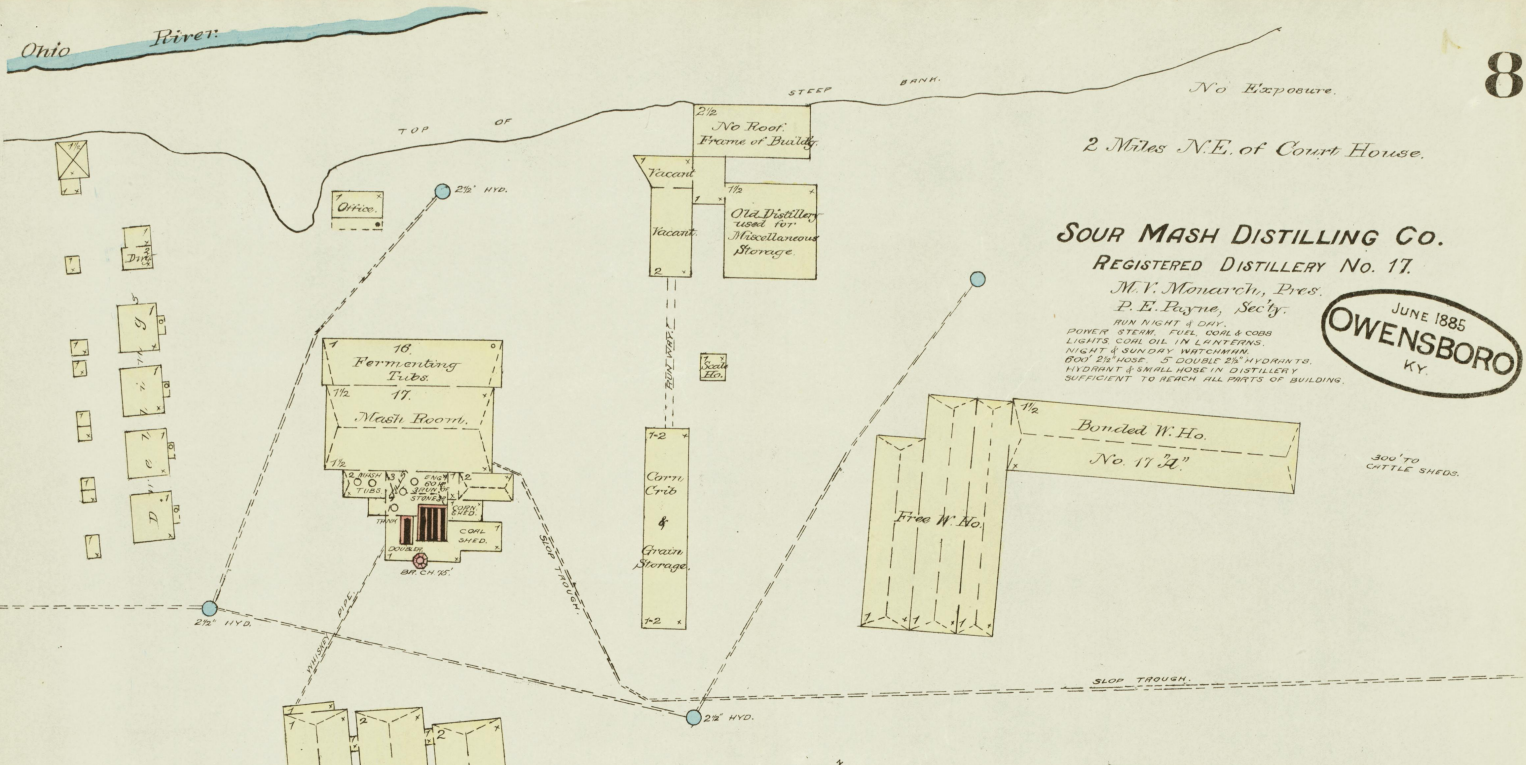


Vacant dngy. this side

CENTRE

Vacant

Vacant this side

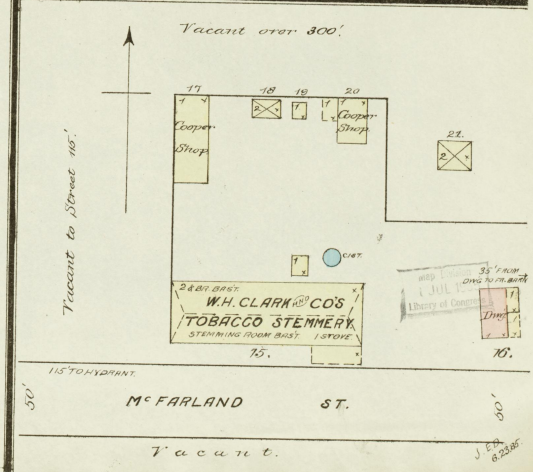
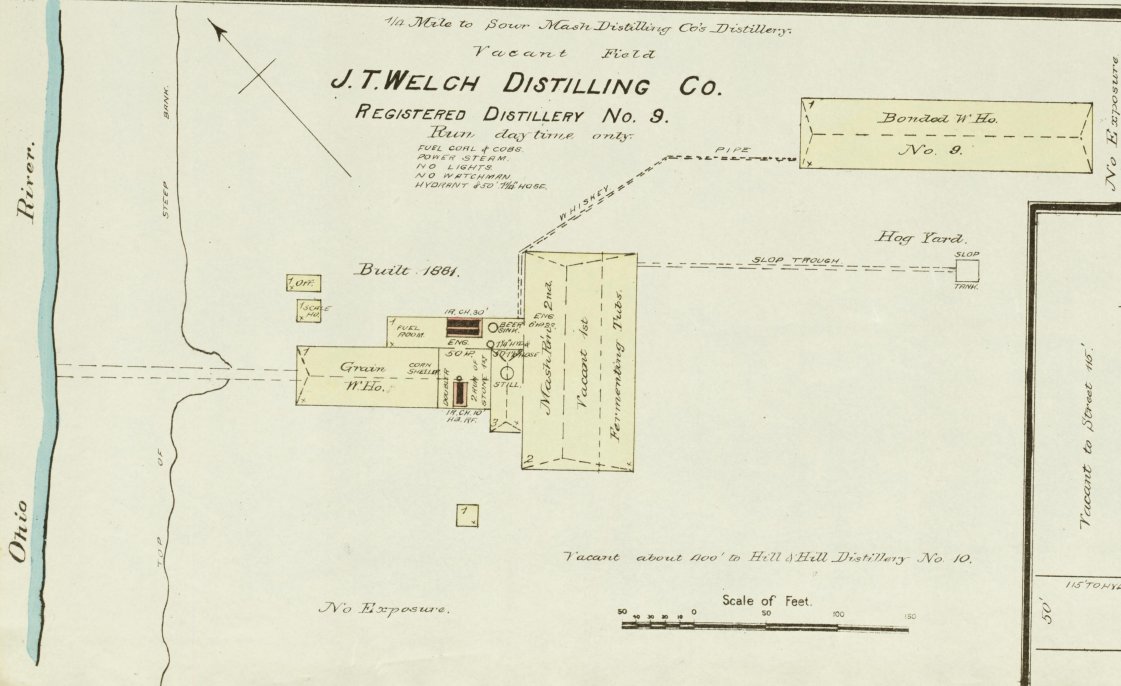
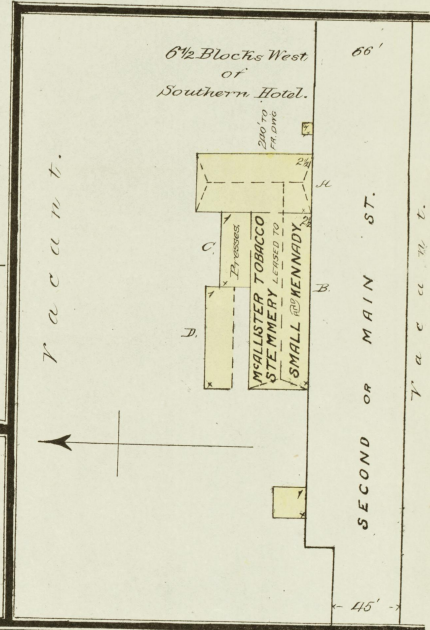


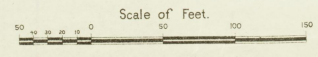
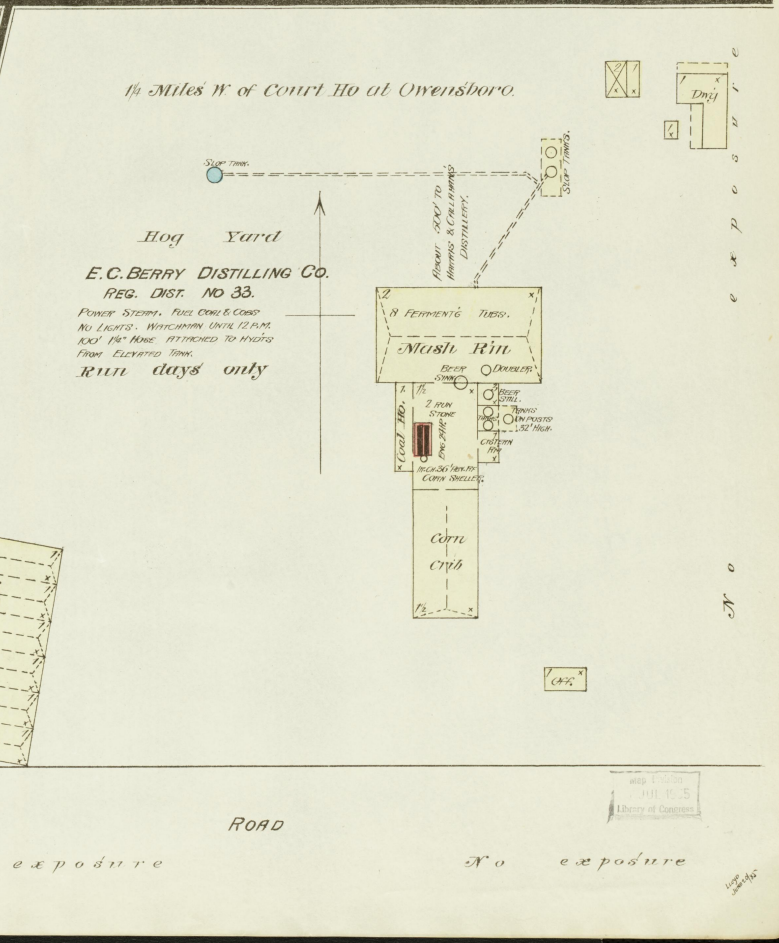
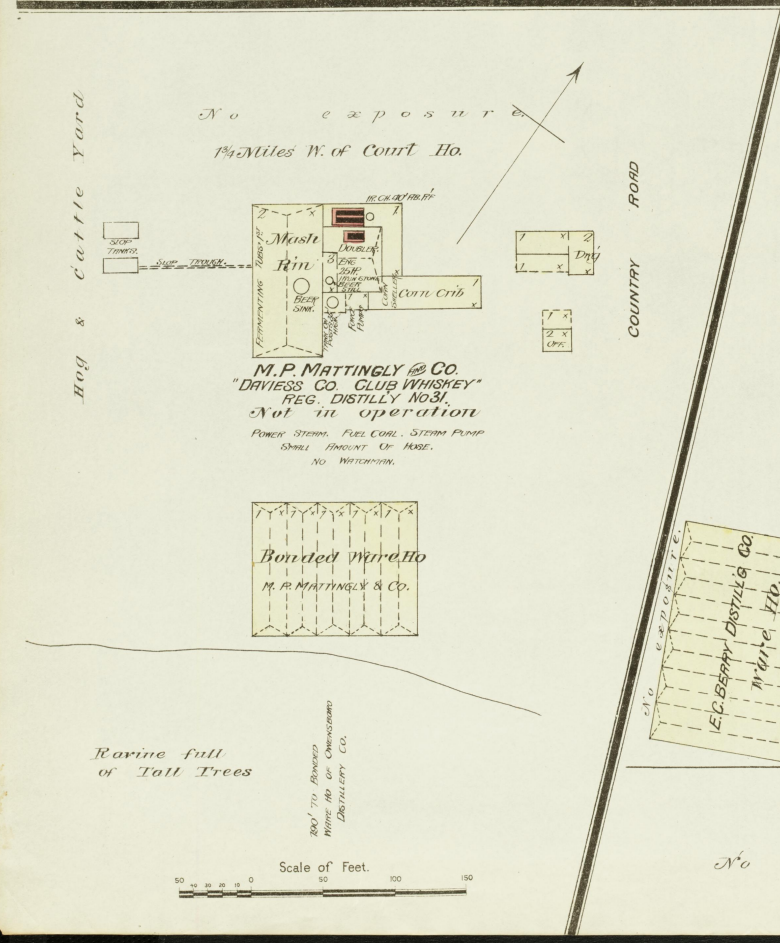
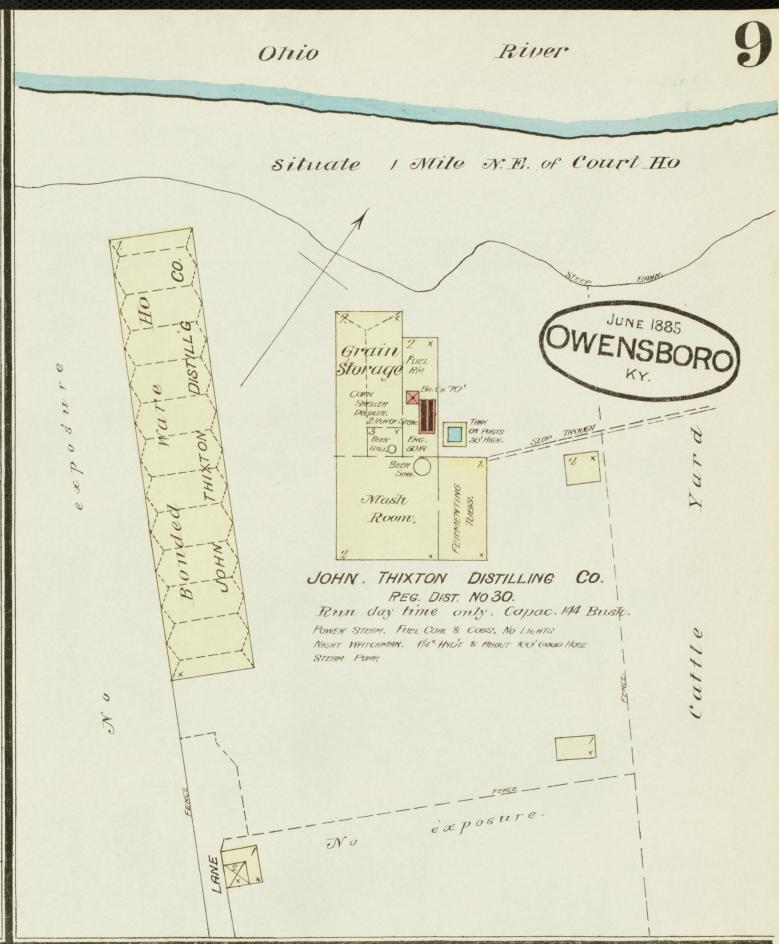
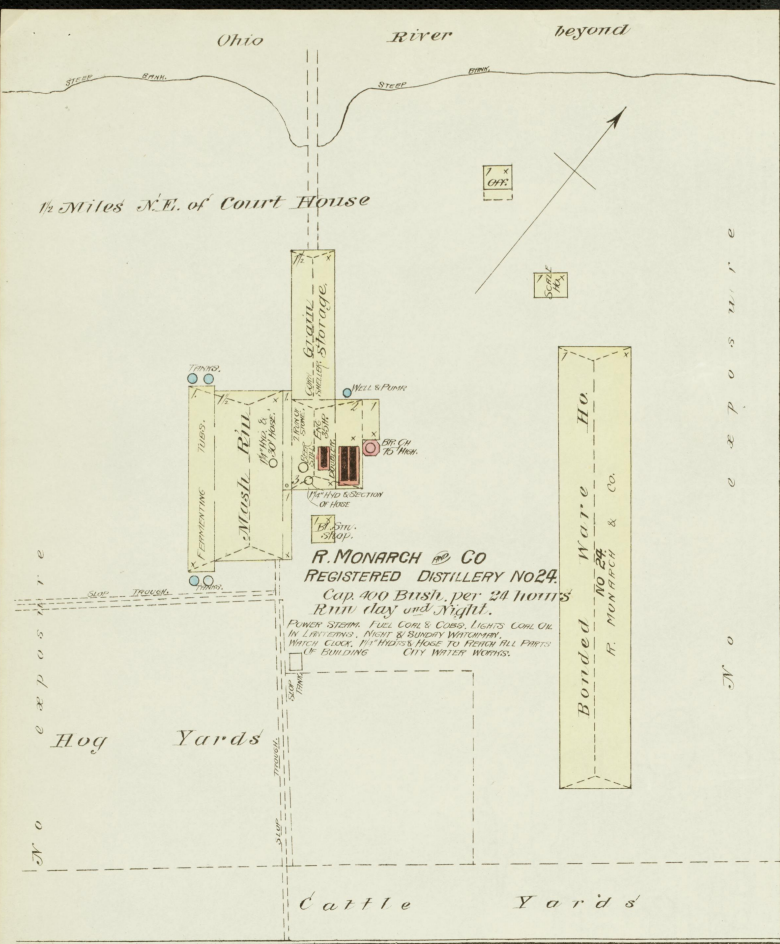
SOUR MASH DISTILLING CO.
 REGISTERED DISTILLERY No. 17.
 M. V. Monarch, Pres.
 P. E. Bayne, Sec'y.
 RUN NIGHT & DAY.
 POWER STEAM, FUEL COAL & COBS.
 LIGHTS SOLID OIL IN LAMPTEAMS.
 NIGHT & SUN ONLY WATCHMEN.
 BOB 2 1/2" HOSE, 5" DOUBLE 2 1/2" HYDRANTS.
 HYDRANT & SMALL HOSE IN DISTILLERY.
 SUFFICIENT TO REACH ALL PARTS OF BUILDING.

JUNE 1885
OWENSBORO
 KY.

COUNTRY ROAD.

Vacant Fields Opposite.





Ravine full of Tall Trees

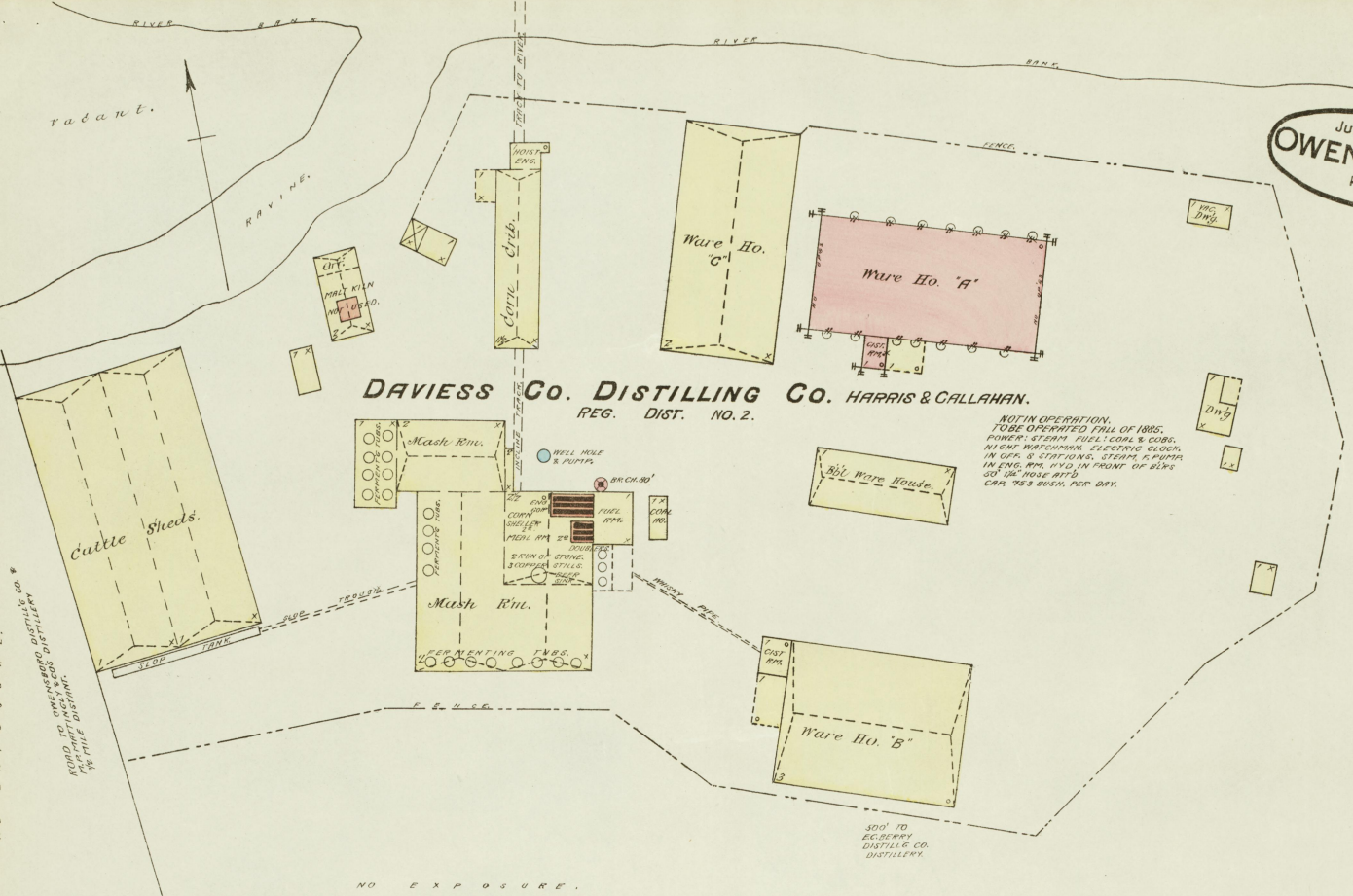
200' to Bonded Warehouse
WINE HO of Owensboro
Distillery Co.

Map 1-1000
JUL 10 1885
Library of Congress

JUNE 1885
OWENSBORO
KY.

DAVIESS CO. DISTILLING CO. HARRIS & CALLAHAN.
REG. DIST. NO. 2.

NOT IN OPERATION.
TOBE OPERATED FALL OF 1885.
POWER: STEAM, FULL COAL & COBS.
LIGHT: WATCHMAN, ELECTRIC CLOCK,
IN OPS. & STATIONS, STEAM PLUMBA
IN ENG. RM. IN FRONT OF BLDGS
50' 1/2" HOSE ATTS.
CAP. 725 BUSH PER DAY.

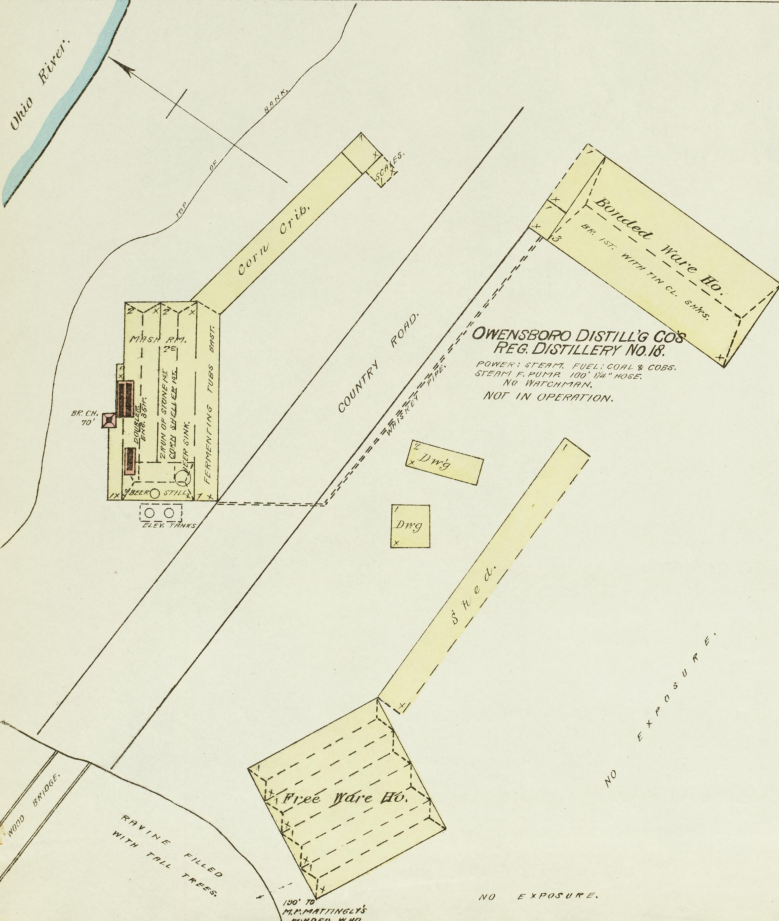


N. U. E. X. P. O. S. U. R. E.
ROAD TO OWENSBORO DISTILLING CO.
1 1/2 MILES DISTANT.

N. O. E. X. P. O. S. U. R. E.

N. O. E. X. P. O. S. U. R. E.

500' TO
ECHEBERRY
DISTILLING CO.
DISTILLERY

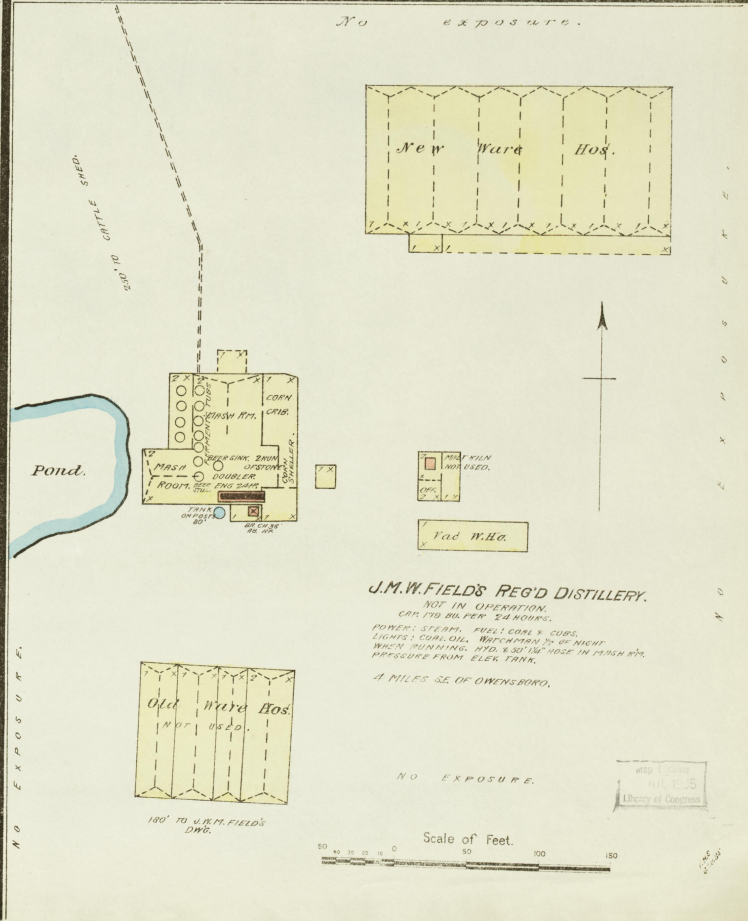


**OWENSBORO DISTILLING CO'S
REG. DISTILLERY NO. 18.**
POWER: STEAM, FUEL, COAL & COBS.
STEAM & FUEL IN 100' 1/2" HOSE.
NO WATCHMAN.
NOT IN OPERATION.

RAVINE FILLED
WITH FILL TREES

N. O. E. X. P. O. S. U. R. E.

N. O. E. X. P. O. S. U. R. E.



J.M.W. FIELD'S REG'D DISTILLERY.
NOT IN OPERATION.
CAP. 775 BUSH PER 24 HOURS.
POWER: STEAM, FULL COAL & COBS.
LIGHTS: COAL OIL, WATCHMAN 7 1/2' HIGH
WASH PUMPING, 110' & 50' 1/2" HOSE IN MASH RM.
PRESSURE FROM ELEV. TANK.

1 MILES SE. OF OWENSBORO.

N. O. E. X. P. O. S. U. R. E.

N. O. E. X. P. O. S. U. R. E.

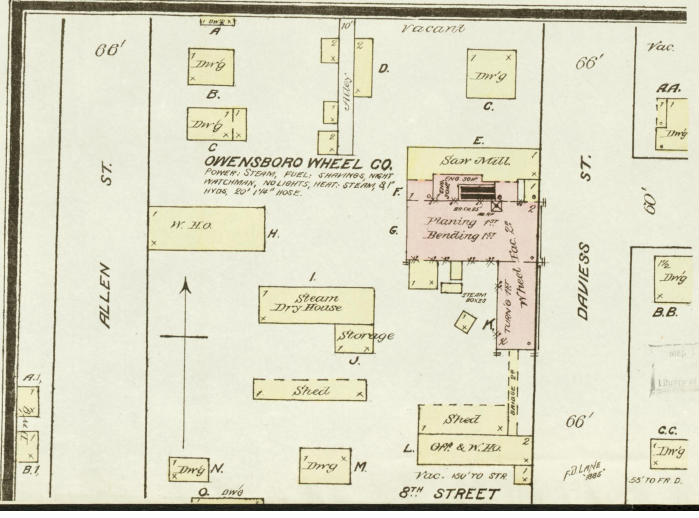
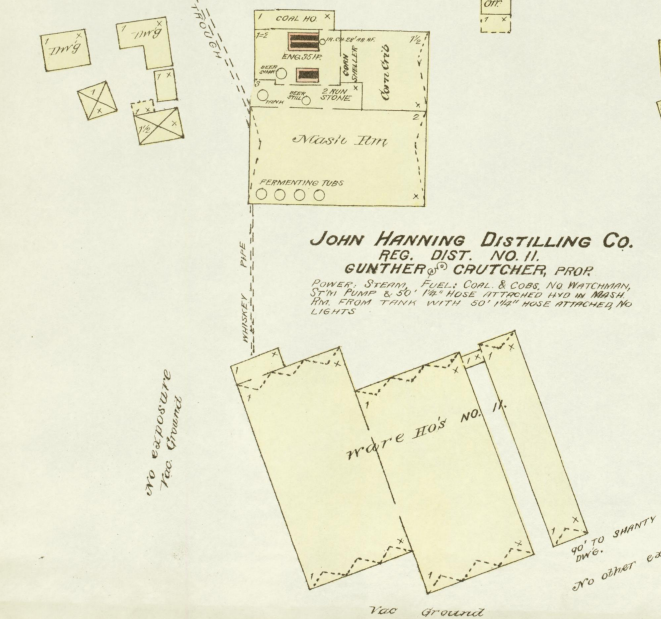
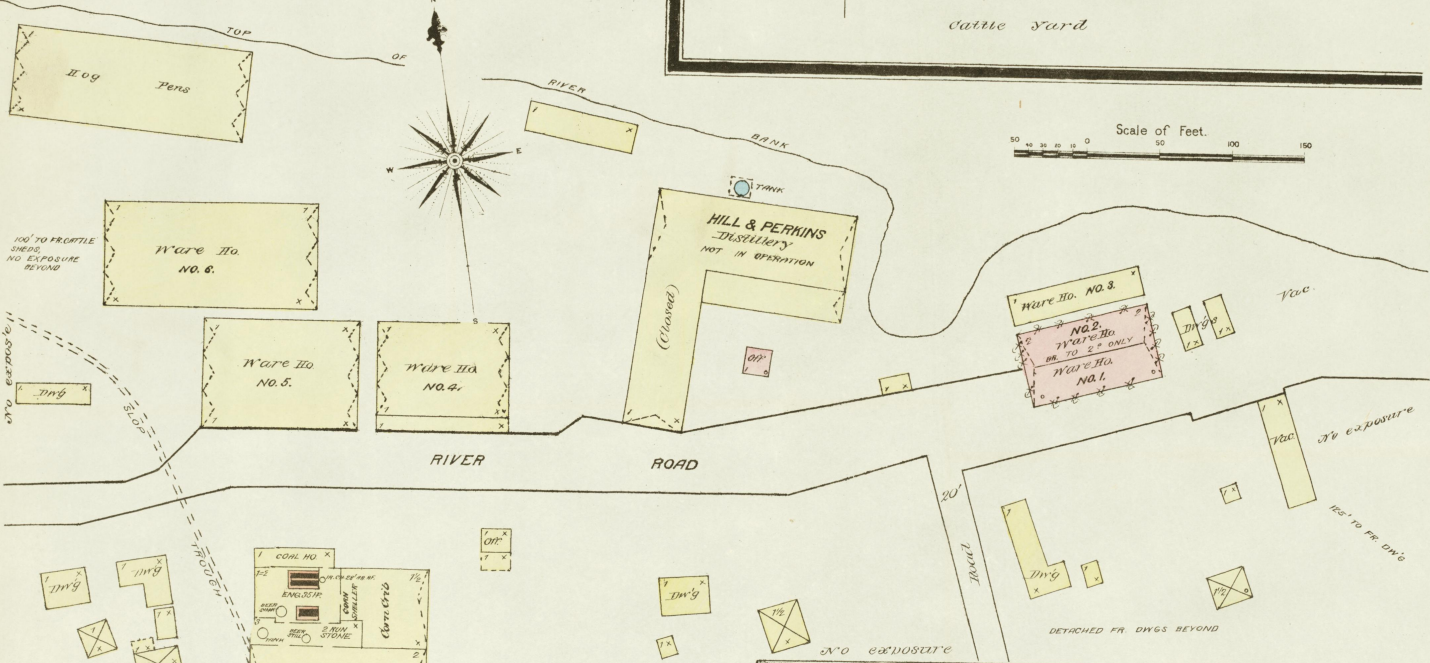
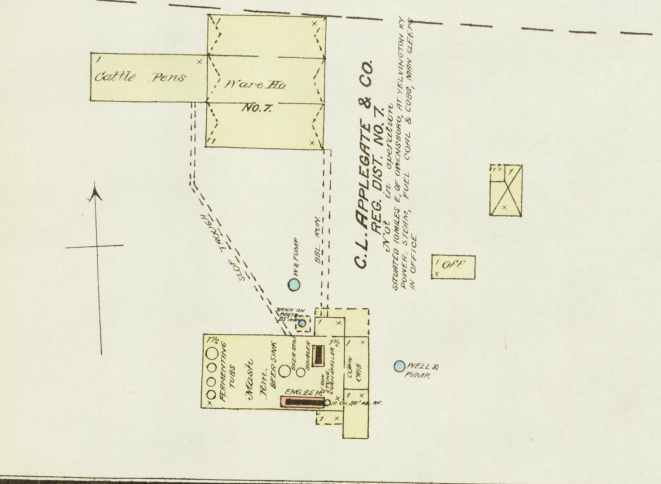
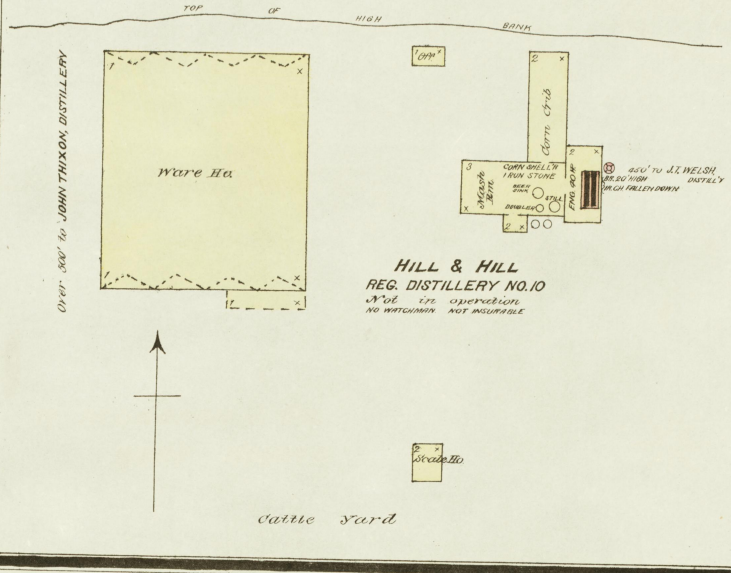
Scale of Feet. 50 100 150

U.S. GEOLOGICAL SURVEY
LIBRARY OF CONGRESS

JUNE 1885
OWENSBORO
KY.

no exposure any side
ROAD

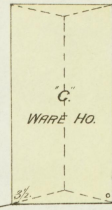
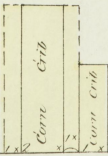
OHIO RIVER



N o e x p o s u r e

JUNE 1885
OWENSBORO
KY.

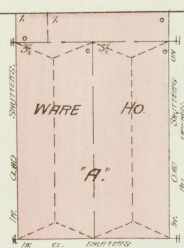
Shed.



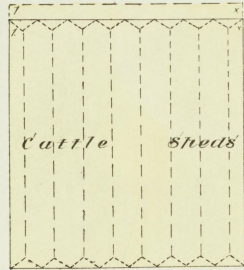
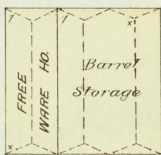
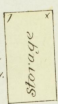
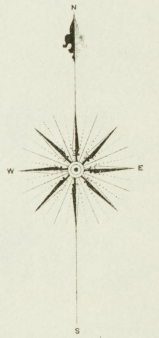
FIFTH ST. 1/2 Mile W. of Court Ho.



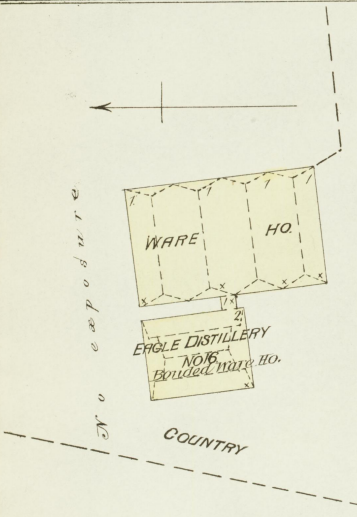
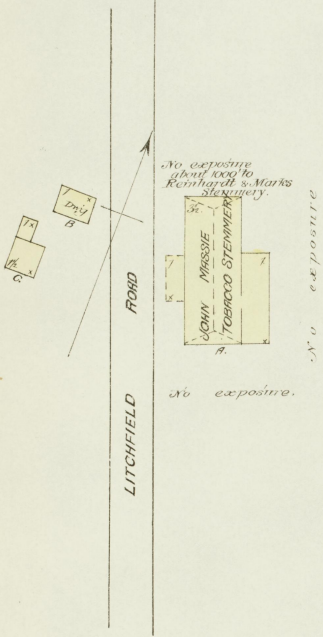
REMAINS OF
Distillery
burned Feb 11 1895.
DOUBLER



R. MONARCH AND CO.
WARE HOUSES



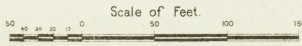
v a c a n t



CLIFF FALLS DISTILLERY CO
REGISTERED NO. 16.
Situate at Bird City
12 Miles W. of Owensboro.
PUMPS STEAMS, FUEL COILS,
LIGHTS, COOKING IN LIGHTERS,
NO WATERWORK,
STEAM PUMP & 50' Ho. Hose.

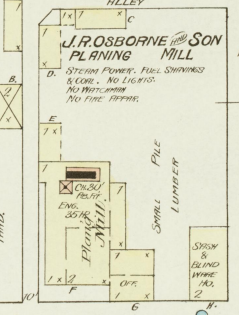


No exposure.



Green River

FR. DWGS.



SEVENTH ST.

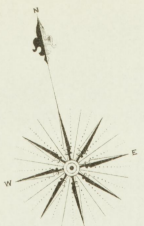
LEWIS ST.



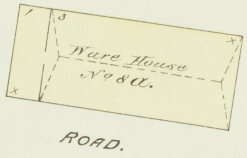
v a c a n t

Library of Congress

JUNE 1885
OWENSBORO
KY.

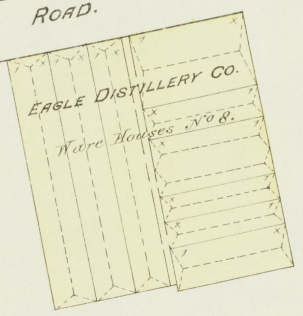


No exposure.



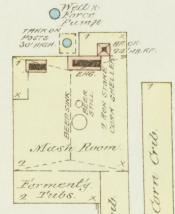
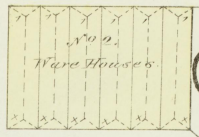
ROAD.

EAGLE DISTILLERY CO.
REGISTERED No. 8.
Situate at Grissoms Landing Ky.
10 Miles N. W. of Owensboro.
POWER, STEAM, FUEL, COAL & COKE, LIGHTS, HEAD,
BANDS, ETC. ENCLOSED. MADE BY COGNAC, WHEN RUNNING
STEAM PUMP & 300' 24" HOSE.
Capacity 500 Bushels.

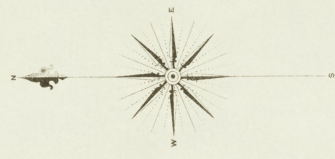


ROAD.

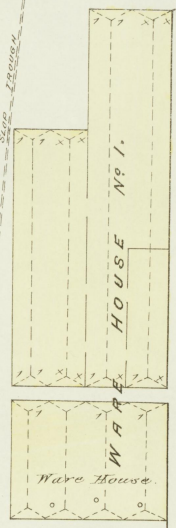
No exposure.



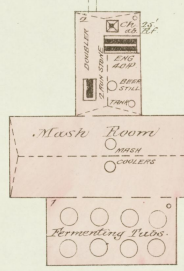
OLD W. S. STONE'S DISTILLERY.
REGISTERED No. 13.
M. P. MATTINGLY PROP.
5 Miles West of Owensboro Ky. on
Road to Grissoms Landing.
POWER, STEAM, FUEL, COAL & COKE, NO WATCHMAN
NO LIGHTS, NO WINDMILLS FROM ELEVATED TANK, ABOUT
100' 18" HOSE.
Capacity 220 Bushels.



No exposures.



ROAD TO GRISSOMS LANDING.
Tangent fields opposite.



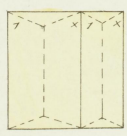
Altho' 100' 18" Ho.
Frame Cattle Sheds.

Tangent. No exposures.

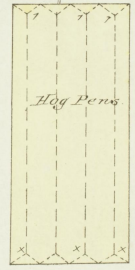
No exposures.



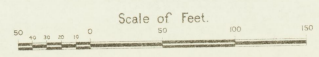
M. BOULWARE AND SON
REGISTERED No. 25.
5 Miles S. W. of Owensboro.
(Not in Operation.)
POWER, STEAM, FUEL, COAL & COKE,
NO WATCHMAN, NO FIRE APPARATUS.
Capacity 70 Bushels.



No exposures.



No exposure.



1885 JUN 15
Office of Comptroller