

Add-Drop Edition Kentucky Kernel

JAN 13 1992

Add/Drop signals start of semester

By SHAWN MEAUX
Contributing Writer

Reality break. Add/Drop is here. Add/Drop begins tomorrow and runs through Jan. 22. Students who need to add or drop classes for the spring semester may report to the site where they advanced registered in November. The central Add/Drop site will be the mezzanine of Patterson Office Tower. Graduate students and seniors will be the first to Add/Drop classes tomorrow morning from 8 to 10. Freshmen will have the second opportunity to change their schedules from 10 to noon. Add/Drop sites will be closed from noon to 1 p.m. Juniors will be next from 1 to 3 p.m., followed by sophomores from 3 to 5 p.m. and non-degree students from 5 to 6 p.m. The central site will remain open until 7 p.m. tomorrow only. Any student wishing to Add/Drop may do so at this time.

Students also can add or drop any time after their scheduled times. For those who will Add/Drop at office tower site tomorrow, the process will begin in White Hall Classroom Building. Students will check in there and will proceed to the POT mezzanine. Lisa Collins, director of registration, said this will be done to keep students out of bad weather and to help alleviate the mass of people who gather in the POT lobby for check-in. For the remainder of the Add/Drop period, the POT central site will serve students on a first-come, first-served basis. Wednesday and Thursday the site will be open from 8 a.m. to 12:15 p.m. and 1:30 p.m. to 6 p.m. Friday and Jan. 22, the central site will be open from 8 a.m. to 12:15 p.m. and 1:30 to 4:30 p.m. All sites will be closed on Monday, Jan. 20 in observance of Martin Luther King Jr. Day. Collins urges students to be prepared.

"Students should have with them a schedule book and/or a copy of the (Kentucky) Kernel, a pencil and worksheet and know the course numbers and sections of classes they want to add and/or drop. Students should show up about 30 minutes earlier than their allotted time to get checked in and to get in line. They won't be able add or drop earlier than scheduled, but being a little early will allow the lines to move more quickly." Students will be able to see which classes are open and the number of seats available through the prime computer system. No student ID is needed to log on to the computer. With a generic ID, students may log on to the schedule to see what's available. The consultant on site will be able to help students log on. This can be done at any of the computer cluster sites with the exception of the POT mezzanine.

The prime computer system will be updated daily at 12:30 and 7. Students who want to drop a class without adding one may do so in the Classroom Building. Duplicate fall schedules will be available in 10 W.D. Funkhouser Building. Anyone registering for classes Jan. 10 to 13 may add additional classes beginning Jan. 15. Those students are not eligible to add classes tomorrow. Students may call the office of their college dean or the registration office at 257-7173 to find out their appropriate Add/Drop site. Worksheets will be available at all Add/Drop locations and in the offices of the dean of their colleges. "We have made every effort to ensure that all lines move as quickly as possible, especially on Tuesday," Collins said. "I hope that it's a smooth process for everyone."

ADD/DROP January 14

Reporting Times

Graduate Students and Seniors - 8:00-10:00 a.m.
Freshman - 10:00 a.m.-noon
Juniors - 1:00-3:00 p.m.
Sophomores - 3:00-5:00 p.m.
Nondegree - 5:00-6:00 p.m.

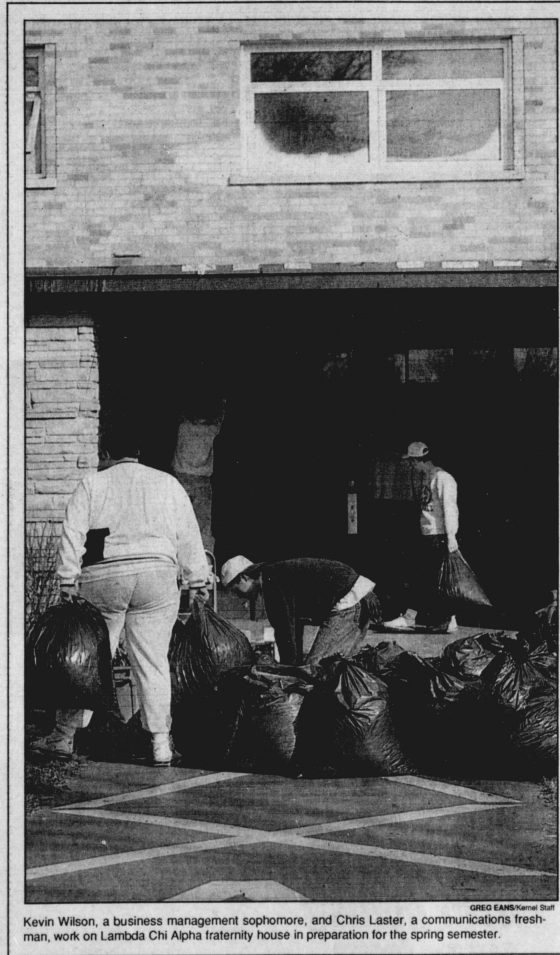
*POT mezzanine site remains open until 7:00 p.m. January 14 only.
*All sites closed noon-1:00 p.m.
*Add/Drop continues January 15-22 on a first-come, first-served basis.
*Add/Drop locations close from 12:30-1:30 p.m. daily, January 15-22.
*All locations close at 4:30 p.m. beginning January 17.

Add/Drop Locations

Agriculture - N6 Ag Science North Building
Allied Health Professions - 222 Medical Center Annex 2
Architecture - 112 Finco Hall
Arts and Sciences - POT Mezzanine*
Communications - POT Mezzanine*
Education - POT Mezzanine*
Engineering - 171 Anderson Hall
Evening/Weekend - POT Mezzanine*
Fine Arts - 206 Fine Arts Building
Graduate School - Add/Drop occurs at program registration site
Human Environmental Sciences - 103 Erskow Hall
Nursing - 205 College of Nursing Building
Pharmacy - 225 Pharmacy Building
(pre-pharmacy go to A&S site)
Social Work - 402 POT

*begin in Whitehall January 14 only

TYRONE JOHNSTON/Kentucky Kernel Staff



Kevin Wilson, a business management sophomore, and Chris Laster, a communications freshman, work on Lambda Chi Alpha fraternity house in preparation for the spring semester.

New Attorney General Gorman will pursue Wilkinson lawsuit

By GREGORY A. HALL
Associate Editor

LOUISVILLE, Ky. — New state Attorney General Chris Gorman said he will pursue the lawsuit against Wallace Wilkinson the former governor's self-appointment to the UK Board of Trustees. Wilkinson appointed himself to the board Dec. 2. Former state attorney general Fred Cowan filed suit against Wilkinson Dec. 5. The suit claims Wilkinson's self-appointment violated public policy and was an attempt to extend his power beyond his term in office. Gorman, a former Jefferson County commissioner, was sworn in Jan. 6. Interviewed before taking office, Gorman said he agreed with Cowan and would pursue the case in the courts and/or through new legislation in the General Assembly. "One way or the other, I think what has happened is obviously outrageous and an abuse of that office," Gorman said. Gorman said he will speak with legislative leaders about trustee reforms, which could alleviate the need for the lawsuit. He said that Cowan informed him of the suit the night before it was filed, and the Attorney General's office kept him abreast of the case after that. Gorman received both his undergraduate and law degrees from UK. As an alumnus of the University, Gorman said he considered Wilkinson's action "a horrible blot on the



WILKINSON

reputation of our institution." In other news surrounding Wilkinson's appointment: "Wilkinson's bookstore company will not do business with UK while he is a trustee. He made the decision last month. Wallace's College Book Company, was the low bidder in 1988 for a book contract with the University of Louisville, which through a cooperative led to his dealings with UK. Wilkinson's business with UK while a trustee would not break the law or be a conflict of interest. However, Wilkinson decided to discontinue his business dealings with the University. State law limits what business trustees may have with universities, but it allows trustees to obtain university contracts if they are the lowest bidder in a competitive bidding process. "Everyone who has looked at the issue agrees that there is no conflict because all business is competitively bid," Wilkinson said. He said that he believed the media would divert attention to his business if he were to continue doing business with the University, rather than reform. "My company has developed a close, mutually beneficial relationship with the college bookstores, and it is one I had to end, but the debate about higher education reform is more important." "Wilkinson took the trustee's oath privately in UK President Charles Wehington's office Dec. 20. The oath was administered by Paul VanBooven, a UK attorney and notary public. Wilkinson spokesman Doug Alexander said there was some question as to whether appointees had to be sworn in within 30 days of being appointed. Alexander said it made sense to take the oath instead of letting the question arise. Alexander said Wilkinson's opting to take the oath privately had nothing to do with protest from faculty and students about his appointment. Asa Hord, whom Wilkinson appointed on his last day in office, also was sworn in. Billy Wilcoxson, whom Wilkinson re-appointed the same day, was sworn in Dec. 23. The next board meeting is Jan. 21. "Faculty from the College of Arts and Sciences are circulating a petition calling for Wilkinson to resign from the board and for Wehington to persuade him to do so. Political science professor Ernest Yanarella said more than 250 faculty have signed the petition of the nearly 380 faculty in the college. He said the petition will be presented to the faculty trustees before the Jan. 21 meeting. Wehington has said he will not ask Wilkinson to step down because it is not the job of the president to choose trustees.

Booklet to aid student-athletes

Staff reports
In an effort to help UK student-athletes obtain jobs after graduation, the Athletics Department recently released its first resumé booklet. The booklet, which was furnished by the Athletics Association Wildcat Career Development Program, contains resumés of student-athletes who will graduate on or before August 1992. Enclosed in the booklet is a letter

from Athletics Director C.M. Newton directed at prospective employers. "It is imperative that you hire quality people for your organization or business," Newton stated in the letter. "These student-athletes have given so much to the University, the Lexington community and the state of Kentucky. They have achieved both in athletics and in the classroom.

"They are motivated individuals who are seeking careers." Athletics officials are asking prospective employers to consider interviewing and/or hiring those athletes listed in the booklet. "We know from experience that student-athletes who have persevered to graduation are often very successful in their chosen careers," said Robert L. Bradley, assistant director of athletics. "They redirect the energy they once used to succeed in sports."

Tickets for three upcoming UK basketball games still may be obtained today

Staff reports
UK's game with Arkansas may not carry as much tradition as the University of Louisville game, but student tickets may be harder to obtain, UK officials said.

"This game is looking as big as the Louisville game as far as calls about tickets from fans and students goes," said Rodney Stiles, director of administrative services. Student ticket distribution for the Jan. 25 Arkansas game, along with

distribution for Eastern Kentucky University (Jan. 18) and University of Mississippi (Jan. 29) contests began Jan. 12 at 8 and continued through 2 p.m. at Memorial Coliseum. Today's distribution will contin-

ue from 9 a.m. to 4 p.m. outside the Coliseum. Students can receive up to two tickets by presenting theirs and a friend's student ID and activity card. "For the first three games, we will honor the fall semester IDs and

activity cards," Stiles said. After today's distribution, officials will decide whether to sell guest tickets tomorrow. The decision will be announced tonight on WRFL-FM at 5, 6, and 7. Guest tickets, if available, will cost \$10.

Stiles said students who have not gotten their ID validated for the semester will be admitted to the EKU game by presenting last semester's ID and activity card. For admission to the Arkansas game, students must have their IDs validated.

<p>UK improves record during Christmas vacation. Story, Page 1B.</p>	<p>For students who have misplaced their schedules, duplicates are available today through Friday in 10 W.D. Funkhouser Building.</p>	<p>Add/Drop information for the 1992 spring semester and other scheduling information found inside.</p>
---	--	--

1992 Spring Schedule Update

OPEN COURSES

The number of available seats is noted in the column following the section number. An asterisk (*) denotes a course with five or fewer seats available.

Table listing course numbers, section numbers, and times. Includes courses like AAS 100, A-E 272, A-E 395, etc.

Table listing course numbers, section numbers, and times. Includes courses like A-S 520, A-S 540, A-S 550, etc.

Table listing course numbers, section numbers, and times. Includes courses like ACC 202, ACC 203, ACC 204, etc.

Table listing course numbers, section numbers, and times. Includes courses like AEN 480, AEN 548, AEN 599, etc.

Advertisement for COURTSPORTS and ADD. Features the text 'DROP on by COURTSPORTS and ADD To Your Sports Wardrobe!' and 'JANUARY SALE NOW IN PROGRESS'. Includes a cartoon character and logos for Citizens Fidelity Bank and PNC BANK.



Your Official
**UNIVERSITY OF
Kentucky
Bookstore**

**Eastpack
SARATOGA
BACKPACK**
Lifetime Guarantee **\$35.95**

Carter Desk-Style
HILITERS
Regular & Fluorescent
SAVE 70¢ on 2 **2 for \$1.00**

American Heritage
DICTIONARY
Thumb-indexed
200,000 Precise Definitions
3,000 Photos and Illustrations
SAVE \$6.00 **\$11.95**

Sharp
**SCIENTIFIC
CALCULATOR**
with Manual and Solutions book
252 Functions / 8 Memories
For Students & Professionals
Our Every Day Low Price **\$29.99**

**Your
Full-Service
Bookstore**

Dennison
**WIREBOUND
NOTEBOOK**
3 Subjects / Pockets / 120 Sheets
SAVE \$1.20 **\$2.99**

Velva Sheen
100% Cotton
T-SHIRT
with Multi-Color Graphic
Compare at \$14.99 **\$9.99**

Sharp
**FINANCIAL
CALCULATOR**
with Solution Book
Solves Amortization, Interest, Bond Price
Computes Mean, Summation, Standard Deviation
Our Every Day Low Price **\$29.99**

Our USED TEXTBOOKS

SAVE YOU 25%

We Have The Most!

OPEN UNTIL

Mon.	8 pm
Tue.	8 pm
Wed.	9 pm
Thur.	9 pm
Fri.	6 pm
Sat.	5 pm

106 Student Center Annex • 257-6304



0915AM
0850AM
1215PM
0615PM
0350PM
1050AM
0950AM
1045AM
0145PM
1150AM
1250PM
0450PM
1150AM
0450PM
1050AM
0150PM
1150AM
TBA
0950AM
1215PM
0250PM
1150AM
0450PM
1045AM
0915AM
0250PM
0350PM
0820PM
0150PM
0800PM
TBA
0800PM
0250PM
0830PM
0250PM
0250PM
0850AM
1150AM
0450PM
0250PM
0850AM
0250PM
0150PM
7
DIP
DIC

ANT 120 004 23 3.0 TR	0200PM	0250PM	ARC 202 201 5* 6.0	TBA	0200PM	0430PM
ANT 121 002 9 3.0 MW	0100PM	0150PM	ARC 220 001 13 3.0	MW	1100AM	1215PM
ANT 121 003 3* 3.0 MW	0900AM	0950AM	ARC 221 001 40 3.0	MW	1100AM	1215PM
ANT 121 004 1* 3.0 MW	0100PM	0150PM	ARC 231 001 24 2.0	TR	0200PM	0340PM
ANT 121 008 11 3.0 F	0100PM	0150PM	ARC 810 001 41 6.0	F	0340PM	0555PM
ANT 121 201 23 3.0 R	0600PM	0830PM	ARC 810 002 14 6.0	F	0200PM	0555PM
ANT 121 401 45 3.0 T	0600PM	0830PM	ARC 810 003 15 6.0	F	0340PM	0555PM
ANT 160 001 1* 3.0 MW	0100PM	0150PM	ARC 810 004 63 6.0	F	0200PM	0340PM
ANT 160 003 1* 3.0 MW	0100PM	0150PM	ARC 810 005 65 6.0	F	0200PM	0340PM
ANT 160 011 1* 3.0 MW	1000AM	1050AM	ARC 810 201 15 6.0	TBA	1100AM	1150AM
ANT 160 012 1* 3.0 MW	1000AM	1050AM	ARC 811 001 35 6.0	M	0200PM	0555PM
ANT 161 001 1* 3.0 TR	1100AM	1150AM	ARC 811 002 9 6.0	M	0200PM	0555PM
ANT 232 001 5* 3.0 TR	1100AM	1215PM	ARC 811 003 6 6.0	M	0200PM	0555PM
ANT 242 001 22 3.0 MWF	0900AM	0950AM	ARC 811 004 55 6.0	M	0200PM	0555PM
ANT 325 001 14 3.0 MWF	0600PM	0830PM	ARC 811 005 60 6.0	M	0200PM	0555PM
ANT 350 001 10 3.0 M	0900AM	1130AM	ARC 811 201 11 6.0	TBA	0200PM	0555PM
ANT 355 001 1* 3.0 MW	1200PM	1250PM	ARC 811 202 9 6.0	TBA	0200PM	0555PM
ANT 399 001 10 1.0 TBA	TBA	TBA	ARC 812 001 41 6.0	M	0415PM	0555PM
ANT 4316 001 16 3.0 TR	0930AM	1045AM	ARC 812 002 20 6.0	TBA	0200PM	0555PM
ANT 4506 001 7 3.0 R	1100AM	1215PM	ARC 812 003 20 6.0	TBA	0200PM	0555PM
ANT 516 001 3* 3.0 TR	0930AM	1045AM	ARC 812 004 20 6.0	TBA	0200PM	0555PM
ANT 534 001 5* 3.0 T	0400PM	0630PM	ARC 812 005 20 6.0	TBA	0200PM	0555PM
ANT 538 001 36 3.0 MWF	0200PM	0250PM	ARC 812 006 65 6.0	M	0415PM	0555PM
ANT 541 001 9 3.0 R	0200PM	0340PM	ARC 812 007 6 6.0	M	0200PM	0555PM
ANT 580 001 8 3.0 T	0900AM	1130AM	ARC 812 008 20 6.0	TBA	0200PM	0555PM
ANT 580 201 8 3.0 S	0900AM	0430PM	ARC 812 009 3 3.0	TR	0600PM	0650PM
ANT 581 001 24 1.0 TBA	TBA	TBA	ARC 812 010 20 7.0	MWF	0600PM	0650PM
ANT 582 001 23 3.0 R	0200PM	0430PM	ARC 812 011 19 7.0	TBA	0600PM	0650PM
ANT 612 001 2* 3.0 W	0300PM	0530PM	ARC 812 012 10 7.0	TBA	0600PM	0650PM
ANT 621 001 4* 3.0 TR	0200PM	0315PM	ARC 812 013 10 7.0	TBA	0600PM	0650PM
ANT 640 401 2* 3.0 T	0700PM	0930PM	ARC 812 014 20 7.0	MWF	0600PM	0650PM
ANT 684 001 1* 3.0 TR	1230PM	0145PM	ARC 812 015 20 7.0	MWF	0600PM	0650PM
ANT 720 001 9 3.0 T	0200PM	0430PM	ARC 812 016 20 7.0	MWF	0600PM	0650PM
ANT 725 001 7 3.0 M	0200PM	0530PM	ARC 812 017 20 7.0	MWF	0600PM	0650PM
ANT 725 002 11 3.0 W	0300PM	0530PM	ARC 812 018 20 7.0	MWF	0600PM	0650PM
ANT 749 001 23 0.0 TBA	TBA	TBA	ARC 812 019 20 7.0	MWF	0600PM	0650PM
ANT 749 001 1* 3.0 TR	0900AM	1130AM	ARC 812 020 10 7.0	TBA	0600PM	0650PM
ANT 767 001 9 1.0 TBA	TBA	TBA	ARC 812 021 10 7.0	TBA	0600PM	0650PM
ANT 768 001 26 1.0 TBA	TBA	TBA	ARC 812 022 9 3.0	TR	0600PM	0650PM
ANT 769 001 19 0.0 TBA	TBA	TBA	ARC 812 023 9 3.0	TR	0600PM	0650PM
ANT 770 001 13 3.0 M	0200PM	0430PM	ARC 812 024 9 3.0	TR	0600PM	0650PM
ANT 774 001 10 3.0 M	0100PM	0330PM	ARC 812 025 9 3.0	TR	0600PM	0650PM
ANT 790 001 26 3.0 TBA	TBA	TBA	ARC 812 026 9 3.0	TR	0600PM	0650PM
ARC 102 001 10 4.0 TR	1230PM	0430PM	ARC 812 027 9 3.0	TR	0600PM	0650PM
ARC 102 002 12 4.0 MWF	0200PM	0450PM	ARC 812 028 9 3.0	TR	0600PM	0650PM
ARC 102 003 16 4.0 MWF	0200PM	0450PM	ARC 812 029 9 3.0	TR	0600PM	0650PM
ARC 102 004 10 4.0 MWF	0200PM	0450PM	ARC 812 030 9 3.0	TR	0600PM	0650PM
ARC 102 005 15 4.0 MWF	0200PM	0450PM	ARC 812 031 9 3.0	TR	0600PM	0650PM
ARC 102 006 13 4.0 T	0900AM	1150AM	ARC 812 032 9 3.0	TR	0600PM	0650PM
ARC 120 001 16 2.0 TR	0100PM	0150PM	ARC 812 033 20 6.0	F	0200PM	0555PM
ARC 121 001 104 2.0 TR	0100PM	0150PM	ARC 812 034 20 6.0	F	0200PM	0555PM
ARC 202 001 55 6.0 M	0200PM	0340PM	ARC 812 035 20 6.0	F	0200PM	0555PM
ARC 202 002 9 6.0 M	0340PM	0555PM	ARC 813 001 18 6.0	F	0200PM	0555PM
ARC 202 003 7 6.0 M	0200PM	0340PM	ARC 813 002 20 6.0	F	0200PM	0555PM
ARC 202 004 7 6.0 M	0200PM	0340PM	ARC 813 003 20 6.0	F	0200PM	0555PM
ARC 202 005 6 6.0 M	0200PM	0340PM	ARC 813 004 20 6.0	F	0200PM	0555PM
			ARC 813 005 19 6.0	F	0200PM	0555PM
			ARC 813 006 65 6.0	M	0415PM	0555PM
			ARC 813 007 6 6.0	M	0200PM	0555PM
			ARC 813 008 20 6.0	TBA	0200PM	0555PM
			ARC 813 009 20 6.0	TBA	0200PM	0555PM
			ARC 813 010 20 6.0	TBA	0200PM	0555PM
			ARC 813 011 20 6.0	TBA	0200PM	0555PM
			ARC 813 012 20 6.0	TBA	0200PM	0555PM
			ARC 813 013 20 6.0	TBA	0200PM	0555PM
			ARC 813 014 20 6.0	TBA	0200PM	0555PM
			ARC 813 015 20 6.0	TBA	0200PM	0555PM
			ARC 813 016 20 6.0	TBA	0200PM	0555PM
			ARC 813 017 20 6.0	TBA	0200PM	0555PM
			ARC 813 018 20 6.0	TBA	0200PM	0555PM
			ARC 813 019 20 6.0	TBA	0200PM	0555PM
			ARC 813 020 20 6.0	TBA	0200PM	0555PM
			ARC 813 021 20 6.0	TBA	0200PM	0555PM
			ARC 813 022 20 6.0	TBA	0200PM	0555PM
			ARC 813 023 20 6.0	TBA	0200PM	0555PM
			ARC 813 024 20 6.0	TBA	0200PM	0555PM
			ARC 813 025 20 6.0	TBA	0200PM	0555PM
			ARC 813 026 20 6.0	TBA	0200PM	0555PM
			ARC 813 027 20 6.0	TBA	0200PM	0555PM
			ARC 813 028 20 6.0	TBA	0200PM	0555PM
			ARC 813 029 20 6.0	TBA	0200PM	0555PM
			ARC 813 030 20 6.0	TBA	0200PM	0555PM
			ARC 813 031 20 6.0	TBA	0200PM	0555PM
			ARC 813 032 20 6.0	TBA	0200PM	0555PM
			ARC 813 033 20 6.0	TBA	0200PM	0555PM
			ARC 813 034 20 6.0	TBA	0200PM	0555PM
			ARC 813 035 20 6.0	TBA	0200PM	0555PM
			ARC 813 036 20 6.0	TBA	0200PM	0555PM
			ARC 813 037 20 6.0	TBA	0200PM	0555PM
			ARC 813 038 20 6.0	TBA	0200PM	0555PM
			ARC 813 039 20 6.0	TBA	0200PM	0555PM
			ARC 813 040 20 6.0	TBA	0200PM	0555PM
			ARC 813 041 20 6.0	TBA	0200PM	0555PM
			ARC 813 042 20 6.0	TBA	0200PM	0555PM
			ARC 813 043 20 6.0	TBA	0200PM	0555PM
			ARC 813 044 20 6.0	TBA	0200PM	0555PM
			ARC 813 045 20 6.0	TBA	0200PM	0555PM
			ARC 813 046 20 6.0	TBA	0200PM	0555PM
			ARC 813 047 20 6.0	TBA	0200PM	0555PM
			ARC 813 048 20 6.0	TBA	0200PM	0555PM
			ARC 813 049 20 6.0	TBA	0200PM	0555PM
			ARC 813 050 20 6.0	TBA	0200PM	0555PM
			ARC 813 051 20 6.0	TBA	0200PM	0555PM
			ARC 813 052 20 6.0	TBA	0200PM	0555PM
			ARC 813 053 20 6.0	TBA	0200PM	0555PM
			ARC 813 054 20 6.0	TBA	0200PM	0555PM
			ARC 813 055 20 6.0	TBA	0200PM	0555PM
			ARC 813 056 20 6.0	TBA	0200PM	0555PM
			ARC 813 057 20 6.0	TBA	0200PM	0555PM
			ARC 813 058 20 6.0	TBA	0200PM	0555PM
			ARC 813 059 20 6.0	TBA	0200PM	0555PM
			ARC 813 060 20 6.0	TBA	0200PM	0555PM
			ARC 813 061 20 6.0	TBA	0200PM	0555PM
			ARC 813 062 20 6.0	TBA	0200PM	0555PM
			ARC 813 063 20 6.0	TBA	0200PM	0555PM
			ARC 813 064 20 6.0	TBA	0200PM	0555PM
			ARC 813 065 20 6.0	TBA	0200PM	0555PM
			ARC 813 066 20 6.0	TBA	0200PM	0555PM
			ARC 813 067 20 6.0	TBA	0200PM	0555PM
			ARC 813 068 20 6.0	TBA	0200PM	0555PM
			ARC 813 069 20 6.0	TBA	0200PM	0555PM
			ARC 813 070 20 6.0	TBA	0200PM	0555PM
			ARC 813 071 20 6.0	TBA	0200PM	0555PM
			ARC 813 072 20 6.0	TBA	0200PM	0555PM
			ARC 813 073 20 6.0	TBA	0200PM	0555PM
			ARC 813 074 20 6.0	TBA	0200PM	0555PM
			ARC 813 075 20 6.0	TBA	0200PM	0555PM
			ARC 813 076 20 6.0	TBA	0200PM	0555PM
			ARC 813 077 20 6.0	TBA	0200PM	0555PM
			ARC 813 078 20 6.0	TBA	0200PM	0555PM
			ARC 813 079 20 6.0	TBA	0200PM	0555PM
			ARC 813 080 20 6.0	TBA	0200PM	0555PM
			ARC 813 081 20 6.0	TBA	0200PM	0555PM
			ARC 813 082 20 6.0	TBA	0200PM	0555PM
			ARC 813 083 20 6.0	TBA	0200PM	0555PM
			ARC 813 084 20 6.0	TBA	0200PM	0555PM
			ARC 813 085 20 6.0	TBA	0200PM	0555PM
			ARC 813 086 20 6.0	TBA	0200PM	0555PM
			ARC 813 087 20 6.0	TBA	0200PM	0555PM
			ARC 813 088 20 6.0	TBA	0200PM	0555PM
			ARC 813 089 20 6.0	TBA	0200PM	0555PM
			ARC 813 090 20 6.0	TBA	0200PM	0555PM
			ARC 813 091 20 6.0	TBA	0200PM	0555PM
			ARC 813 092 20 6.0	TBA	0200PM	0555PM
			ARC 813 093 20 6.0	TBA	0200PM	0555PM
			ARC 813 094 20 6.0	TBA	0200PM	0555PM
			ARC 813 095 20 6.0	TBA		

Table with columns for ID, name, date, time, and location. Includes entries for BIO 404E, BIO 508, BIO 522, etc.

Table with columns for ID, name, date, time, and location. Includes entries for CHE 107, CHE 107 004, CHE 107 001, etc.

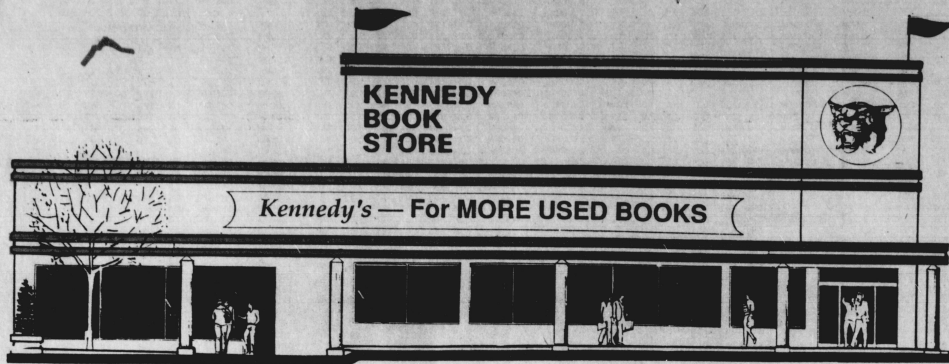
Continued on Page 2B

Advertisement for 438 S. Ashland Chevy Chase. Features 'Sub Center' logo, 'Minimum Delivery Order \$3.25 FREE DELIVERY', and 'BUY ONE MONSTER MIX SUB GET ONE mini-mix FREE'. Includes hours and delivery information.

Advertisement for Lexington Athletic Club. Features a photo of Steve Zimmer and friends, the text 'Come workout with Steve Zimmer and some of his friends.', and 'Beat the Rate Increase! "You Can Still Join Lexington's Five Star Club For Less Than \$1 Per Day!*"'. Lists amenities like 5 Fitness Centers, Olympic Indoor Pool, and 300+ Aerobic Classes.

Advertisement for 'FREE GUIDE TO SPRING BREAK '92'. Includes a photo of a person, the text 'You're Invited to the 30th Anniversary Party at the World's #1 Spring Break Destination...', and contact information for Destination Daytona!

Advertisement for Lexington Athletic Club. Includes the phone number '273-3163', the logo 'lexington athletic club', and the note '*Membership is restricted to non-prime hours and based on 12 months.'



**MORE STUDENTS,
BY FAR,
BUY THEIR
BOOKS
AT *KENNEDY'S***

**SAVE 25%
ON USED BOOKS**

Open 8:00 A.M. to 8:00 P.M. Monday - Thursday This Week



G
ni
Ri
br
of
th
of
th
im
So
Ne
ed
is
tio
ter
.
po
pla
tec
fro
hor
J
13
pla
ish
N
vai
UK
Tec
24
J
ish
Bol
sun
.
assi
the
.
T
Am
pair
plo
con
run
near
UK
poir
ed L
trail
J
UK
Woc
.
T
Rap
"lim
UK"
dow
tion
"Dre
UJ
ers i
Oves
Pe
fuele
less-
L sp
study
days
leash
N
By H
Arts t
The
along
on a
White
of the
- H
Frank
Schut
be a
good
follow
the ex
hibits
Look
that h
.
*Th
22): I
House

UK improves record over Christmas break

Christmas practices beneficial to Wildcats

By TIM WIESENHAHN
Sports Editor

After the Wildcats defeated the Georgia Bulldogs 78-66 Tuesday night at Rupp Arena, UK coach Rick Pitino said the Christmas break has given his squad the opportunity to "work on a lot of things." Apparently, the work paid off.

Before Saturday's game against the Florida Gators, the Wildcats had improved to 11-2 overall, 2-0 in the Southeastern Conference, earned a No. 15 ranking from The Associated Press and sat atop the SEC. Here is a brief recap of UK basketball action since the end of the fall semester.

Georgia Tech 81, UK 80

Trailing the Yellow Jackets by 20 points with less than 14 minutes to play, Pitino drew two consecutive technical fouls and was ejected from the game. Pitino's absence, however, proved a blessing.

Junior guard Dale Brown scored 13 points in the final 11 minutes of play to spark the Wildcats. He finished with a team-high 21 points.

Nevertheless, Georgia Tech prevailed. The Yellow Jackets handed UK its second defeat this season. Tech's Jon Barry led all scorers with 24.

Afterward, many stood in astonishment.

"It was a wild one," Tech coach Bobby Cremins said. "I'm still not sure what happened."

"...They fought like crazy," UK assistant coach Herb Sendek said of the Wildcats.

UK 73, Ohio 63

The Bobcats, yet another Mid-American Conference school (see a pair UK football wins this fall), employed the now endangered ball-control offense that stymied UK's run-and-gun offense. And after nearly 33 minutes of play, Ohio and UK were tied at 53. But a three-point basket by Richie Farmer ignited UK's offense and the Cats never trailed again.

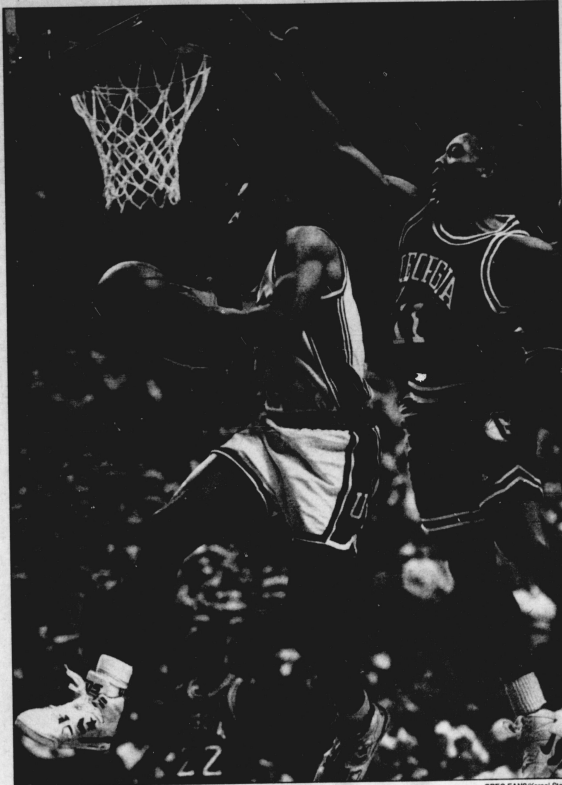
Jamal Mashburn's 23 points lead UK. Farmer scored 12 and Sean Woods chipped in 10.

UK 103, Louisville 89

The third-largest crowd in Rupp's history witnessed UK's "limped victory" John Pelphrey and UK's precision three-point shooting down the Cardinals in the latest edition of the Commonwealth's "Dream Game."

UK made 11 of its 21 three pointers including six of its first seven. Overall, the Cats shot 54.2 percent.

Pelphrey's exceptional play was fueled by the discovery of several less-than-flattering remarks by U of L sports writer Henry Hoenig. After studying the article for four or five days, Pelphrey boiled and unleashed his fury on the Cardinals.



GREG EANS/Kentucky Staff

Junior Braddy drove to the basket for an easy layup against the Georgia Bulldogs last week. Braddy scored a career-high 15 points during the game.

He hit four three-pointers and scored 26 points to lead UK.

Writing in the Louisville Cardinal, the U of L student newspaper, Hoenig described Pelphrey as "pointy headed and limp wristed." He said U of L would be playing "the lowest form of life" in Rupp.

In UK's previous two games, Pelphrey had made only one of 10 three-point shots.

Mashburn added 25 points. Ho hum.

UK 91, Notre Dame 70

Notre Dame's victory over Florida in the Sugar Bowl the night before gave the Irish enough inspiration to jump to a 16-8 lead. But the luck of the Irish was fooled by the play of UK's bench.

Senior Richie Farmer and 6-foot-9 freshman Andre Riddick posted career-high numbers to give UK its ninth victory this season and its 18 win over Notre Dame in the 21-game series.

Farmer lead all scorers with 28 points. Riddick scored eight points

and grabbed eight rebounds.

"I was open, I was hot and I made them," Farmer said.

Mashburn added 25 points.

UK 80, South Carolina 63

The third-largest crowd in Carolina Coliseum history witnessed the Gamecocks' first SEC basketball game and its first sighting of the Monster Mash — Mashburn. For South Carolina, it became a nightmare.

Mashburn, a threat from inside as well as outside the three-point line, scared the daylight out of Carolina's coaching staff. Thus, the Gamecocks choose to defend Mashburn's inside game with its 7-footer Jeff Roulston. Mashburn was so open on the perimeter he might have grown lonely.

The result? Mashburn took 33 points, had 11 rebounds and scored a career-high 15 three-pointers. He made a career-high five. His 14 baskets and 27 shots also were career

See UK, Page B8

A little effort changes Mashburn into monster

It takes some doing, but you can get Jamal Mashburn all heated up. You have to do a little talking or damage the pride a bit or just dare him, but the man tagged "The Monster Mash" will turn into that character.

He is capable of taking control of any game in which he's involved. It doesn't matter the opponent or defender. His game is so complete that all it lacks is a bit of motivation or some step-forwardness on his part.

That's a fight that UK coach Rick Pitino faces on nearly an everyday basis. This sophomore from the Bronx, N.Y., has the talent to become one of the premier players in any league, including the NBA, a place he'll most undoubtedly be a part of come the 1994-95 season.

"Jamal just needs to learn that he can take over a game," Pitino said earlier this season.

Indeed.

Just take the South Carolina game about 10 days ago. New coach Steve Newton thought he'd put a big man on Mashburn. Big mistake. Big, big mistake. When the 7-footer followed Mashburn to the perimeter, The Monster Mash just drove by him. When the big man stayed off a bit, Mash just popped the three-pointer.

This defensive wizardry from the former Murray State head coach led to only a career-high 33 points for Mashburn. It was only because he hit five of 15 three-point attempts. If he'd been shooting at his normal 50 percent clip from behind the arc, he really would have been a Monster. Fifty points was not out of the question.

Despite being wide open on nearly every possession, the sophomore reverted a bit and began passing up easy shots because his less-than-normal accuracy was down a bit. That brought the ire of Pitino, a man who's more likely to bench a player for passing up a shot than taking one.



Barry REEVES

"He's sometimes too much of a superstar. When you're wide open, which Mash was for much of South Carolina's debut in the Southeastern Conference, that's how you become a superstar. When you're not open, don't pass the ball to someone who is and still shoot, that's how you become known as a ball hog.

A true superstar allows the points to come, but when the team really needs a basket, never misses.

Kenny Walker became a superstar in college, and Rex Chapman (sorry, mom) became a ball hog, something he still hasn't grown out of despite 3 1/2 seasons in the NBA.

In that respect, Mashburn's far ahead of Chapman.

Let us not forget, Mashburn is only 19 years and 1 1/2 months old, something is tough to forget.

Here is a young man that demands, by his play, to be compared with one of, if not the, best power forward in the history of basketball. Mashburn, just by his God-given frame and his play on the court, always reminds one of Karl Malone, the perennial All-Star for the Utah Jazz, when he was at Louisiana Tech.

With the same build, 6-8, 240-pounds and cut like a rock (sorry, Ray Oliver), Mashburn is The Mailman without that Monster aggressiveness.

See MASHBURN, Page B8



GREG EANS/Kentucky Staff

Wildcat Deron Feldhaus squared off against a Georgia opponent during Tuesday's matchup against the Dawgs. The Cats were victorious at Rupp Arena, winning 78-66.

New year brings diverse productions to UK, Lexington

By HUNTER HAYES
Arts Editor

The spring semester is here, and along with it come many arts events on and around the UK campus. While last semester featured some of the nation's best musical talents — Henry Mancini, jazz saxophonist Frank Morgan and vocalist Diane Schuur — the next few months will be a highly promising period for good entertainment as well. The following are some highlights of the eclectic performances and exhibits you can catch this spring. Look for other shows and exhibits that have not yet been scheduled.

• **The Piano Lesson** (Jan. 21-22): Broadway Live at the Opera House presents the Pulitzer Prize-

winning play by August Wilson, directed by Lloyd Richards in its premier performance of its national tour.

• **64 Charing Cross Road** (Jan. 16-19, 24-25, 31-Feb. 1): Studio Players begins the new year with the production at their theater on West Bell Court. Tickets are \$8 general public and \$6 for students and senior citizens. For more information, call 254-2512.

• **The Night Hawk Williams Died** (Jan. 9-11, 16-19, 23-25): Actors' Guild of Lexington is known for staging quality, offbeat and innovative productions at ArtsPlace. This should be no exception. Tickets are \$12 general public and \$8 students and senior citizens. Call 233-0663 for more information.

• **"Nude '92"** (Jan 18-Feb. 23): The Lexington Art League, located at Loudon House, 209 Castlewood Drive, presents the sixth annual exhibition of juried works depicting the human form in all its bare glory. For more information, call 254-7024.

• **Hiroshima** (Feb. 2): The UK SAB Spotlight Jazz Committee and the Office of Minority Student Affairs brings this critically-acclaimed fusion group to Memorial Hall. Tickets are \$15 general public and \$10 for students. Also look for pianist Marcus Roberts (Feb. 28), who has performed at UK with trumpeter Wynton Marsalis. Tickets for this performance at Memorial Hall are \$10 and \$8. For additional ticket information, call 257-8427.

• **The Pixies** (Feb. 2): If your taste in music tends to run a little heavier, don't miss this concert at the Student Center Grand Ballroom. The concert is sponsored by the UK SAB Concert Committee. Tickets go on sale Wednesday for \$15.

• **The Foreigner** (Feb. 13-15, 20-22): The UK Department of Theatre follows its successful *To Kill a Mockingbird* with this production at the Guignol Theatre in the Fine Arts Building. They will present *A Wrinkle in Time* April 9-11, 16-18. Call 257-4929 for ticket information.

• **Baby** (Feb 13-16, 21-23): Lexington Musical Theatre teams the WomanCare Plaza of Central Baptist Hospital for this musical at ArtsPlace. It focuses on three couples in a college town as they pre-

pare to bring new lives into the world. Tickets are \$12.

• **Meet Me in St. Louis** (Feb. 25-26): Broadway Live follows *The Piano Lesson* with this production at the Opera House. The season closes with Tommy Tune's award-winning *Grand Hotel*, May 5-6. Call 233-4567 or 233-3565 for ticket information.

• **Big River** (March 5-8, 13-15): Lexington Musical Theatre brings this favorite back to the Opera House to close its season.

• **Dear Ruth** (March 12-15, 20-21, 27-28): Studio Players presents this play at their West Bell Court theater before ending their season in May with *Send Me A Tenor* (14-

17, 22-23, 29-30).

• **Adam and the Experts** (March 12-14, 19-21, 26-28) and the "New Theatre Festival" (April 9-11, 16-18, 23-25, April 30-May 1, 7-9, 14-16) finish off the 1991-92 season for Actors' Guild at ArtsPlace.

• **Reminder:** There will be many concerts at the Wrackledge and Lynagh's Music Emporium throughout the spring, bringing national acts and spotlighting local talent.

Also, the biggest showcase of local bands, the "Decent Exposure" contest, sponsored by WKQQ-FM and Breeding's, is about two months away. And comedy acts can be seen each week during "Laugh Track Live" at Two Keys Tavern on Tuesdays and at Comedy on Broadway.

OPEN COURSES, continued from Page 5A

Table listing various open courses with columns for course ID, time, location, and instructor. Includes courses like 'Bagels', 'Wellness Cooking Class', 'Cholesterol Class', etc.

Advertisement for Manhattan Bagels. Includes text: 'Present This Coupon When You Buy One Dozen Bagels And Get Six More of Our Regular Varieties FREE!' and address: '393 Waller Ave., Lexington, KY (606) 23F-RESH'.

Advertisement for Baptist Student Union. Includes text: 'NEW YEAR'S RESOLUTIONS THESE WELLNESS PROGRAMS MAY BE YOUR SOLUTION!' and details about various classes and open houses.

Advertisement for THE IMAGE MAKERS. Includes text: 'For all your favorite haircuts and styles Walk-ins welcome' and address: '923 1/2 S. Limestone (next to Gatti's) Open Thursday, Friday and Saturday'.

Advertisement for BAPTIST STUDENT UNION. Includes text: 'Open Houses Jan. 13, 14, 16 7:00 p.m. 429 Columbia Ave. For more info call 257-3989'.

Advertisement for SUB. Includes text: '2 for 1 Tuesdays Buy one 6" sub and a medium drink and get second 6" sub FREE* (After 7pm only)'.

Advertisement for 'Welcome Back from the staff of the Kentucky Kernel, "Home of the Authentic Muscle Pressure Zeitgeist Massage"'. Includes text: 'Read the Kernel You Will feel Renewed and Alive and Illuminated Refreshments Served'.

Advertisement for KEY WEST! Includes text: 'Major & Minor Repairs All Cars and Small Trucks Foreign and Domestic 10% UK Discount -Tune Ups starting at \$25 -Oil Change (Penz-Oil) \$15 Visa/MC accepted'.

Advertisement for ROBERTO'S AUTO REPAIR. Includes text: '253-2820 466 Curry Ave. Major & Minor Repairs'.

Advertisement for WEST CHASE APARTMENTS. Includes text: 'We offer: • Spacious 2 Bedroom Apartments • Free Tanning Bed • Club House • New Swimming Pool • Volleyball Court Stop by and ask about our fantastic special! 231-8112 1346 Village Drive'.

Table of sports schedules with columns for time, event, location, and status. Includes events like 0150PM, 0450PM, 0850AM, etc.

Table of sports schedules with columns for time, event, location, and status. Includes events like FR 305 001 5* 3.0 TR, FR 306 001 5* 3.0 TR, etc.

ack the mel, athens-urge, mel, Alive Feats

Advertisement for 'Build A Great Student Body!' featuring 'Unlimited Use' of fitness equipment like Reebok Step Aerobics, Treadmills, etc. at 2100 Oxford Circle, 252-5121.

Advertisement for 'STUDENT GROUP HEALTH INSURANCE' with 'New Enrollment'. Includes details on enrollment, costs (\$24.95/month), and contact information for Student Insurance Division.

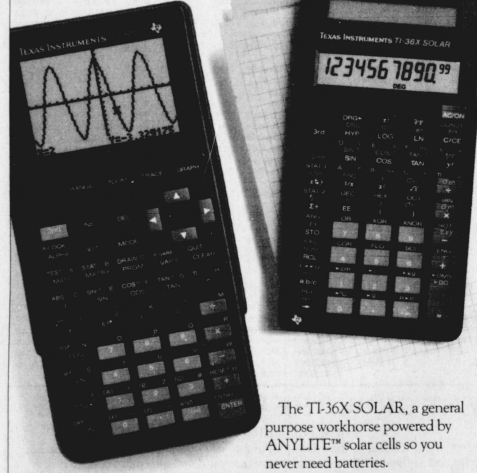
HIS 108 010 12 3.0	TR	0930AM	1020AM	HIS 109 037 1* 3.0	TR	0200PM	0315PM	HON 398 001 999 6.0	TBA	TBA	HPR 122 001 8 1.0	TR	1230PM	0145PM
HIS 108 011 11 3.0	TR	0200PM	0250PM	HIS 109 038 29 3.0	TR	0800AM	0915AM	HON 399 001 16 1.0	TBA	TBA	HPR 126 001 19 1.0	TR	0100PM	0150PM
HIS 108 012 16 3.0	TR	0300AM	0420PM	HIS 109 040 3* 3.0	TR	0330PM	0445PM	HOR 329 002 10 4.0	WF	0830AM	HPR 126 002 14 1.0	TR	1000AM	1215PM
HIS 108 015 2* 3.0	R	0330PM	0420PM	HIS 109 041 1* 3.0	WF	1100AM	1150AM				HPR 126 003 10 1.0	WF	0100PM	0150PM
HIS 108 201 11 3.0	T	0600PM	0830PM	HIS 109 042 1* 3.0	WF	0900AM	0950AM				HPR 126 004 12 1.0	TR	1100AM	1215PM
HIS 108 401 4* 3.0	WF	0600PM	0715PM	HIS 109 044 33 3.0	TR	0800AM	0915AM	HOR 350 001 8 3.0	TR	1100AM	HPR 126 005 3* 1.0	TR	1230PM	0145PM
HIS 108 402 6 3.0	M	0600PM	0830PM	HIS 109 045 2* 3.0	TR	0600PM	0730PM				HPR 126 006 2* 1.0	WF	0800AM	0850AM
HIS 109 001 3* 3.0	TR	0800AM	0850AM	HIS 203 001 4* 3.0	WF	0900AM	0950AM	HOR 352 001 4* 3.0	WF	1000AM	HPR 128 001 9 1.0	WF	1100AM	1150AM
HIS 109 002 13 3.0	TR	0930AM	1020AM	HIS 240 001 2* 3.0	TR	0800AM	0915AM				HPR 131 001 11 1.0	WF	0800AM	0900AM
HIS 109 003 4* 3.0	TR	0900AM	0850AM	HIS 240 401 4* 3.0	TR	0600PM	0715PM	HOR 399 001 15 1.0	TBA	TBA	HPR 132 001 13 1.0	WF	0900AM	0950AM
HIS 109 004 15 3.0	TR	0930AM	1020AM	HIS 261 001 2* 3.0	TR	1100AM	1215PM	HOR 470 001 14 1.0	F	0100PM	HPR 134 001 1* 1.0	TR	1230PM	0145PM
HIS 109 005 20 3.0	TR	0930AM	1020AM	HIS 265 001 4* 3.0	TR	1230PM	0145PM	HOR 510 001 9 3.0	TR	1000AM	HPR 147 001 1* 1.0	WF	0800AM	0900AM
HIS 109 007 1* 3.0	T	0330PM	0420PM	HIS 286 001 15 3.0	WF	0200PM	0250PM				HPR 155 001 4* 1.0	WF	0300PM	0350PM
HIS 109 008 3* 3.0	TR	0330PM	0420PM	HIS 395 001 11 1.0	TBA	TBA		HOR 524 001 2* 3.0	TR	0300PM	HPR 156 001 10 1.0	WF	0100PM	0200PM
HIS 109 009 1* 3.0	TR	0330PM	0420PM	HIS 395 002 14 1.0	TBA	TBA					HPR 157 001 5* 2.0	MW	0100PM	0150PM
HIS 109 010 2* 3.0	TR	0930AM	1020AM	HIS 397 001 10 3.0	TBA	TBA		HOR 582 001 10 1.0	TBA	TBA				
HIS 109 011 6 3.0	TR	0930AM	1020AM	HIS 462 001 8 3.0	TR	1230PM	0145PM	HOR 582 002 29 1.0	TBA	TBA	HPR 162 001 4* 1.0	TBA	0100PM	0250PM
HIS 109 012 2* 3.0	F	0900AM	0950AM	HIS 509 001 15 3.0	TR	1100AM	1215PM				HPR 162 002 22 2.0	TR	0400PM	0550PM
HIS 109 015 1* 3.0	TR	1230PM	0120PM	HIS 520 001 19 3.0	TR	1100AM	1215PM	HOR 623 001 5* 3.0	WF	1100AM	HPR 220 001 5* 4.0	TR	0930AM	1045AM
HIS 109 026 3* 3.0	MW	0800AM	0850AM	HIS 535 001 8 3.0	WF	1100AM	1150AM	HOR 768 001 8 1.0	TBA	TBA	HPR 240 401 2* 3.0	T	0600PM	0830PM
HIS 109 027 9 3.0	MW	0900AM	0950AM	HIS 537 001 18 3.0	TR	1230PM	0145PM	HOR 770 001 10 1.0	TBA	TBA	HPR 280 001 1* 3.0	TR	1230PM	0145PM
HIS 109 028 20 3.0	MW	0900AM	0950AM	HIS 549 001 1* 3.0	TR	1230PM	0145PM	HOR 790 001 10 1.0	TBA	TBA	HPR 294 001 20 2.0	WF	0100PM	0150PM
HIS 109 029 16 3.0	MW	0900AM	0950AM	HIS 584 001 15 3.0	TR	0200PM	0315PM	HPR 100 001 18 1.0	TR	0100PM	HPR 300 001 1* 3.0	TR	0930AM	1045AM
HIS 109 030 1* 3.0	TR	0900AM	0950AM	HIS 585 002 16 3.0	T	0400PM	0500PM	HPR 103 001 24 1.0	WF	0800AM	HPR 330 001 11 3.0	WF	1000AM	1050AM
HIS 109 031 1* 3.0	MW	0900AM	0950AM	HIS 595 003 26 3.0	TBA	TBA		HPR 104 001 3* 1.0	MW	0200PM	HPR 344 001 25 3.0	TR	0100PM	0250PM
HIS 109 032 3* 3.0	MW	0900AM	0950AM	HIS 595 004 25 3.0	TBA	TBA		HPR 105 001 4* 1.0	TR	0330AM				
HIS 109 033 14 3.0	MW	0900AM	0950AM	HIS 614 001 6 3.0	TBA	TBA		HPR 105 002 8 1.0	WF	0700PM				
HIS 109 034 20 3.0	MW	0900AM	0950AM	HIS 638 001 4* 3.0	W	0100PM	0200PM	HPR 106 002 8 1.0	WF	0900AM				
HIS 109 035 20 3.0	MW	0900AM	0950AM	HIS 650 002 2* 3.0	M	0300PM	0400PM	HPR 106 003 1* 1.0	TR	0100PM				
HIS 109 036 3* 3.0	TR	1230PM	0120PM	HIS 695 002 8 1.0	TBA	TBA		HPR 106 004 9 1.0	TR	0800AM				
				HIS 711 001 6 3.0	T	0200PM	0300PM	HPR 107 001 15 1.0	TR	0100PM				
				HIS 730 001 8 3.0	M	0200PM	0300PM	HPR 107 002 22 1.0	TR	0830AM				
				HIS 749 001 26 0.0	TBA	TBA		HPR 107 003 66 1.0	WF	0630AM				
				HIS 768 001 7 1.0	TBA	TBA		HPR 107 004 19 1.0	TR	0930AM				
				HIS 769 001 8 0.0	TBA	TBA		HPR 110 001 7 1.0	WF	0900AM				
				HON 302 401 1* 3.0	TR	0600PM	0730PM	HPR 112 001 2* 1.0	WF	0300PM				
				HON 497 001 5* 3.0	TBA	TBA		HPR 114 001 9 1.0	WF	0900AM				
				HON 102 001 3* 3.0	WF	0900AM	0950AM	HPR 114 002 9 1.0	TR	0100PM				
				HON 102 007 2* 3.0	TR	1230PM	0150PM	HPR 114 003 12 1.0	WF	0200PM				
				HON 202 001 10 3.0	WF	0900AM	0950AM	HPR 114 004 14 1.0	TR	0930AM				
				HON 202 002 4* 3.0	WF	1000AM	1050AM	HPR 115 001 3* 1.0	TR	0930AM				
				HON 202 005 9 3.0	TR	1100AM	1215PM	HPR 115 002 4* 1.0	TR	1100AM				
				HON 202 006 8 3.0	TR	1230PM	0145PM	HPR 116 001 13 1.0	WF	0100PM				
				HON 202 007 2* 3.0	TR	0200PM	0315PM	HPR 116 002 12 1.0	TR	1230PM				
				HON 300 001 55 1.0	TBA	TBA		HPR 116 003 1* 1.0	WF	0100PM				
				HON 395 001 21 3.0	TBA	TBA		HPR 120 005 1* 1.0	W	0300PM				
								HPR 121 001 10 1.0	W	0300PM				

WORK SMARTER. NOT HARDER.

We're working smarter, too. So you don't have to work harder. For us, it means an ongoing relationship with educators and professors, striving to understand

And there are others. Like the TI-68, an advanced scientific that solves up to five simultaneous equations, performs complex numbers and offers formula programming.

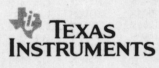
The BA II PLUS™ For business students, this is the one to get. It handles time-value-of-money and offers cash flow analysis for internal rate of return (IRR) and net present value (NPV). Plus a whole lot more.



The TI-36X SOLAR, a general purpose workhorse powered by ANYLITE™ solar cells so you never need batteries.

what's needed to help them make math concepts come alive. It means continually working with students like you, discovering firsthand what you expect from the calculator you select. The result? Calculators that are highly recommended by your teachers and peers. Calculators that are perfectly matched to your major and your coursework. The TI-81 is a perfect example. It offers the most comprehensive, easy-to-use graphing features available with extensive programming capabilities.

No matter what your major, no matter what the course, there's a TI scientific or business calculator that's right for you. Do the smart thing: make one of them a part of your professional personality now, and for the years to come. You'll be on your way to working smarter. Instead of harder. Try the entire line of TI scientific and business calculators at your local TI retailer.



SUBWAY

\$1.00 OFF
any Footlong
Sub*

Good only at
325 S. Limestone
(Next to Two Keys)

233-7811

*Not good with any other offer
Must present coupon
Expires 1/24/92

**We Want You
We Need You
We've Got to
Have You.**

Come by and check out the possibilities at the Kernel.

We're in the basement of the Journalism building.
Or call 257-6526 and ask for Peter Jennings. (He's working the desk this week.)

Welcome Back Students!
Need a

Job?

Apply With STEPS

All interested students are encouraged to meet with STEPS interviewers this week at the Student Center Grand Ballroom. Talk with STEPS Counselors. **January 13-17** Student Center Grand Ballroom 9:00 am - 3:00 pm

Contact STEPS Office - Year Round
252 E. Maxwell Street
between 8:30 am - 3:30 pm
for interview schedule information

Main table containing race results with columns for race number, time, horse name, jockey, trainer, and odds. Includes various race identifiers like HPR, JEU, etc.

Vertical text on the left margin: 'You not to ou.', 'd check libel.', 'asement alism', '526 and ennings.', 'h this week.'

Vertical text on the left margin: 'nts!'

Vertical text on the left margin: 'he'

Table with multiple columns containing alphanumeric codes, numbers, and text. The table is organized into several vertical sections, likely representing different categories or groups of data. The text is dense and appears to be a list of identifiers or codes.

1215PM	PSY 532 001 16 3.0 TR 0200PM 0315PM	SOC 101 010 1* 3.0 TR 1230PM 0145PM	SPI 102 005 1* 4.0 MWF 1100AM 1150AM	STA 422G 001 22 3.0 MWF 1000AM 1050AM
	PSY 532 001 36 3.0 TR 0600PM 0715PM	SOC 101 012 2* 3.0 TR 1230PM 0145PM	STA 525 001 10 3.0 MWF 1200PM 1250PM	
	PSY 533 001 2* 3.0 TR 0930AM 1045AM	SOC 101 013 1* 3.0 TR 0330PM 0445PM	SPI 102 007 1* 4.0 MWF 0100PM 0150PM	STA 570 002 10 4.0 MWF 1000AM 1050AM
	PSY 533 002 22 3.0 MW 0300PM 0415PM	SOC 101 014 8 3.0 TR 0400PM 0515PM	SPI 102 009 5* 4.0 MWF 0300PM 0350PM	STA 570 003 9 4.0 TR 0400PM 0515PM
	PSY 533 001 26 3.0 M 0200PM 0420PM	SOC 101 015 29 3.0 TR 1100AM 1215PM	SPI 102 010 11 4.0 MWF 0300PM 0350PM	STA 570 004 1* 4.0 TR 0400PM 0515PM
	PSY 533 001 22 3.0 MW 0600PM 0715PM	SOC 101 402 20 3.0 T 0800PM 0830PM	SPI 102 013 2* 4.0 MWF 1100AM 1150AM	STA 570 005 13 4.0 TR 0800AM 0915AM
1150AM	PSY 547 001 22 4.0 TR 0200PM 0315PM	SOC 152 001 1* 3.0 MWF 1100AM 1150AM	SPI 102 014 2* 4.0 MWF 1200PM 1250PM	STA 601 001 18 3.0 MWF 1100AM 1150AM
	PSY 553 002 6 1.0 R 0200PM 0300PM	SOC 152 002 1* 3.0 MWF 1100AM 1150AM	SPI 102 015 1* 4.0 MWF 0100PM 0150PM	STA 619 001 5* 3.0 MWF 1000AM 1050AM
1150AM	PSY 558 001 21 3.0 MWF 0900AM 0950AM	SOC 152 003 1* 3.0 MWF 1100AM 1150AM	SPI 102 017 2* 4.0 MWF 0900AM 0950AM	STA 621 001 11 3.0 MWF 0100PM 0150PM
	PSY 611 001 2* 3.0 T 0330PM 0500PM	SOC 152 004 2* 3.0 MWF 1100AM 1150AM	SPI 102 018 7 4.0 MWF 1000AM 1050AM	STA 624 001 1* 3.0 MWF 0300PM 0350PM
	PSY 620 401 1* 3.0 W 0600PM 0830PM	SOC 260 001 2* 3.0 MWF 1100AM 1150AM	SPI 102 401 2* 4.0 MW 0600PM 0800PM	STA 624 001 20 3.0 MWF 0200PM 0250PM
	PSY 622 001 4* 3.0 T 0830AM 1100AM	SOC 260 002 12 3.0 MW 0600PM 0715PM	SPI 102 402 1* 3.0 MWF 0800AM 0850AM	STA 624 001 8 2.0 MWF 0800AM 0850AM
	PSY 623 001 4* 3.0 W 0900AM 1130AM	SOC 399 001 9 1.0 TBA TBA	SPI 102 403 1* 3.0 MWF 0900AM 0950AM	STA 671 001 13 2.0 MWF 0900AM 0950AM
	PSY 626 401 1* 3.0 M 0630PM 0900PM	SOC 399 002 9 1.0 TBA TBA	SPI 102 404 1* 3.0 MWF 0900AM 0950AM	STA 672 001 8 2.0 MWF 0800AM 0850AM
	PSY 627 401 16 3.0 R 0700PM 0950PM	SOC 442 401 16 3.0 R 0700PM 0930PM	SPI 102 405 2* 3.0 MWF 0900AM 0950AM	STA 672 002 1* 2.0 MWF 0100PM 0150PM
	PSY 632 001 6 2.0 W 0300PM 0500PM	SOC 442 402 1* 3.0 MW 0200PM 0315PM	SPI 102 406 1* 3.0 MWF 0900AM 0950AM	STA 673 001 13 2.0 MWF 0900AM 0950AM
	PSY 633 001 6 2.0 R 0300PM 0500PM	SOC 442 403 1* 3.0 MW 0300PM 0415PM	SPI 102 407 1* 3.0 MWF 0900AM 0950AM	STA 673 002 10 3.0 TR 0930AM 1045AM
0450PM	PSY 637 001 6 1.0 TBA	SOC 442 404 1* 3.0 MW 0300PM 0415PM	SPI 102 408 1* 3.0 MWF 0900AM 0950AM	STA 673 003 10 3.0 TR 0930AM 1045AM
	PSY 710 401 2* 3.0 W 0600PM 0900PM	SOC 442 405 1* 3.0 MW 0300PM 0415PM	SPI 102 409 1* 3.0 MWF 0900AM 0950AM	STA 673 004 10 3.0 TR 0930AM 1045AM
	PSY 749 001 10 0.0 TBA	SOC 442 406 1* 3.0 MW 0300PM 0415PM	SPI 102 410 1* 3.0 MWF 0900AM 0950AM	STA 673 005 10 3.0 TR 0930AM 1045AM
	PSY 767 401 13 3.0 T 0700PM 0930PM	SOC 451 001 22 3.0 TR 0330PM 0445PM	SPI 102 411 1* 3.0 MWF 0900AM 0950AM	STA 673 006 10 3.0 TR 0930AM 1045AM
	PSY 768 001 34 1.0 TBA	SOC 452 001 19 3.0 TR 1100AM 1215PM	SPI 102 412 1* 3.0 MWF 0900AM 0950AM	STA 673 007 10 3.0 TR 0930AM 1045AM
	PSY 769 001 11 0.0 TBA	SOC 452 002 19 3.0 TR 1100AM 1215PM	SPI 102 413 1* 3.0 MWF 0900AM 0950AM	STA 673 008 10 3.0 TR 0930AM 1045AM
0850AM	PSY 772 001 8 3.0 R 0830AM 1100AM	SOC 452 003 19 3.0 TR 1100AM 1215PM	SPI 102 414 1* 3.0 MWF 0900AM 0950AM	STA 673 009 10 3.0 TR 0930AM 1045AM
0950AM	PSY 779 001 2* 3.0 M 0900AM 1130AM	SOC 452 004 19 3.0 TR 1100AM 1215PM	SPI 102 415 1* 3.0 MWF 0900AM 0950AM	STA 673 010 10 3.0 TR 0930AM 1045AM
0150PM	PSY 780 002 13 3.0 TBA	SOC 452 005 19 3.0 TR 1100AM 1215PM	SPI 102 416 1* 3.0 MWF 0900AM 0950AM	STA 673 011 10 3.0 TR 0930AM 1045AM
0420PM	PSY 780 003 4* 3.0 T 0600PM 0830PM	SOC 452 006 19 3.0 TR 1100AM 1215PM	SPI 102 417 1* 3.0 MWF 0900AM 0950AM	STA 673 012 10 3.0 TR 0930AM 1045AM
1250PM	PSY 781 001 10 1.0 TBA	SOC 452 007 19 3.0 TR 1100AM 1215PM	SPI 102 418 1* 3.0 MWF 0900AM 0950AM	STA 673 013 10 3.0 TR 0930AM 1045AM
0250PM	PT 695 001 13 1.0 TBA	SOC 452 008 19 3.0 TR 1100AM 1215PM	SPI 102 419 1* 3.0 MWF 0900AM 0950AM	STA 673 014 10 3.0 TR 0930AM 1045AM
0145PM	PT 768 001 12 1.0 TBA TBA	SOC 452 009 19 3.0 TR 1100AM 1215PM	SPI 102 420 1* 3.0 MWF 0900AM 0950AM	STA 673 015 10 3.0 TR 0930AM 1045AM
0845PM	RAE 101 001 9 4.0 TBA TBA	SOC 452 010 19 3.0 TR 1100AM 1215PM	SPI 102 421 1* 3.0 MWF 0900AM 0950AM	STA 673 016 10 3.0 TR 0930AM 1045AM
0830PM	RAE 101 401 5* 4.0 TBA TBA	SOC 452 011 19 3.0 TR 1100AM 1215PM	SPI 102 422 1* 3.0 MWF 0900AM 0950AM	STA 673 017 10 3.0 TR 0930AM 1045AM
0850AM	RAE 102 001 9 4.0 MWF 1100AM 1150AM	SOC 452 012 19 3.0 TR 1100AM 1215PM	SPI 102 423 1* 3.0 MWF 0900AM 0950AM	STA 673 018 10 3.0 TR 0930AM 1045AM
1050AM	RAE 102 003 8 4.0 MWF 1200PM 1250PM	SOC 452 013 19 3.0 TR 1100AM 1215PM	SPI 102 424 1* 3.0 MWF 0900AM 0950AM	STA 673 019 10 3.0 TR 0930AM 1045AM
0445PM	RAE 102 401 6 4.0 TBA TBA	SOC 452 014 19 3.0 TR 1100AM 1215PM	SPI 102 425 1* 3.0 MWF 0900AM 0950AM	STA 673 020 10 3.0 TR 0930AM 1045AM
0150PM	RAE 111 001 30 1.0 R 0200PM 0250PM	SOC 452 015 19 3.0 TR 1100AM 1215PM	SPI 102 426 1* 3.0 MWF 0900AM 0950AM	STA 673 021 10 3.0 TR 0930AM 1045AM
1050AM	RAE 201 401 24 4.0 TBA	SOC 452 016 19 3.0 TR 1100AM 1215PM	SPI 102 427 1* 3.0 MWF 0900AM 0950AM	STA 673 022 10 3.0 TR 0930AM 1045AM
0845PM	RAE 202 001 4* 4.0 MWF 0900AM 0950AM	SOC 452 017 19 3.0 TR 1100AM 1215PM	SPI 102 428 1* 3.0 MWF 0900AM 0950AM	STA 673 023 10 3.0 TR 0930AM 1045AM
1050AM	RAE 202 002 3* 4.0 MWF 1200PM 1250PM	SOC 452 018 19 3.0 TR 1100AM 1215PM	SPI 102 429 1* 3.0 MWF 0900AM 0950AM	STA 673 024 10 3.0 TR 0930AM 1045AM
0915AM	RAE 221 001 10 3.0 MWF 0800AM 0850AM	SOC 452 019 19 3.0 TR 1100AM 1215PM	SPI 102 430 1* 3.0 MWF 0900AM 0950AM	STA 673 025 10 3.0 TR 0930AM 1045AM
1045AM	RAE 221 002 2* 3.0 MWF 1200PM 1250PM	SOC 452 020 19 3.0 TR 1100AM 1215PM	SPI 102 431 1* 3.0 MWF 0900AM 0950AM	STA 673 026 10 3.0 TR 0930AM 1045AM
0150PM	RAE 241 001 29 3.0 TR 0500PM 0615PM	SOC 452 021 19 3.0 TR 1100AM 1215PM	SPI 102 432 1* 3.0 MWF 0900AM 0950AM	STA 673 027 10 3.0 TR 0930AM 1045AM
	RAE 270 001 15 3.0 MWF 0100PM 0150PM	SOC 452 022 19 3.0 TR 1100AM 1215PM	SPI 102 433 1* 3.0 MWF 0900AM 0950AM	STA 673 028 10 3.0 TR 0930AM 1045AM
	RAE 304 001 21 3.0 MWF 1200PM 1250PM	SOC 452 023 19 3.0 TR 1100AM 1215PM	SPI 102 434 1* 3.0 MWF 0900AM 0950AM	STA 673 029 10 3.0 TR 0930AM 1045AM
	RAE 395 001 9 1.0 TBA TBA	SOC 452 024 19 3.0 TR 1100AM 1215PM	SPI 102 435 1* 3.0 MWF 0900AM 0950AM	STA 673 030 10 3.0 TR 0930AM 1045AM
1215PM	RAE 400G 001 26 3.0 MWF 1100AM 1150AM	SOC 452 025 19 3.0 TR 1100AM 1215PM	SPI 102 436 1* 3.0 MWF 0900AM 0950AM	STA 673 031 10 3.0 TR 0930AM 1045AM
0145PM	RAE 401 001 27 3.0 MWF 0300PM 0350PM	SOC 452 026 19 3.0 TR 1100AM 1215PM	SPI 102 437 1* 3.0 MWF 0900AM 0950AM	STA 673 032 10 3.0 TR 0930AM 1045AM
1050AM	RAE 460G 001 9 3.0 MWF 0200PM 0250PM	SOC 452 027 19 3.0 TR 1100AM 1215PM	SPI 102 438 1* 3.0 MWF 0900AM 0950AM	STA 673 033 10 3.0 TR 0930AM 1045AM
0445PM	RAS 601 001 12 2.0 TR 1100AM 1150AM	SOC 452 028 19 3.0 TR 1100AM 1215PM	SPI 102 439 1* 3.0 MWF 0900AM 0950AM	STA 673 034 10 3.0 TR 0930AM 1045AM
1050AM	RAS 647 001 4* 3.0 MWF 1100AM 1150AM	SOC 452 029 19 3.0 TR 1100AM 1215PM	SPI 102 440 1* 3.0 MWF 0900AM 0950AM	STA 673 035 10 3.0 TR 0930AM 1045AM
0315PM	RAS 648 001 4* 3.0 MWF 0300PM 0415PM	SOC 452 030 19 3.0 TR 1100AM 1215PM	SPI 102 441 1* 3.0 MWF 0900AM 0950AM	STA 673 036 10 3.0 TR 0930AM 1045AM
0830PM	RAS 648 001 4* 3.0 MWF 0300PM 0415PM	SOC 452 031 19 3.0 TR 1100AM 1215PM	SPI 102 442 1* 3.0 MWF 0900AM 0950AM	STA 673 037 10 3.0 TR 0930AM 1045AM
0845PM	RAS 695 001 7 1.0 TBA	SOC 452 032 19 3.0 TR 1100AM 1215PM	SPI 102 443 1* 3.0 MWF 0900AM 0950AM	STA 673 038 10 3.0 TR 0930AM 1045AM
0315PM	RAS 715 001 4* 1.0 TBA TBA	SOC 452 033 19 3.0 TR 1100AM 1215PM	SPI 102 444 1* 3.0 MWF 0900AM 0950AM	STA 673 039 10 3.0 TR 0930AM 1045AM
0850AM	RC 530 401 6 3.0 R 0530PM 0800PM	SOC 452 034 19 3.0 TR 1100AM 1215PM	SPI 102 445 1* 3.0 MWF 0900AM 0950AM	STA 673 040 10 3.0 TR 0930AM 1045AM
0830PM	RC 610 401 12 3.0 M 0530PM 0800PM	SOC 452 035 19 3.0 TR 1100AM 1215PM	SPI 102 446 1* 3.0 MWF 0900AM 0950AM	STA 673 041 10 3.0 TR 0930AM 1045AM
0350PM	RC 620 401 9 3.0 T 0630PM 0720PM	SOC 452 036 19 3.0 TR 1100AM 1215PM	SPI 102 447 1* 3.0 MWF 0900AM 0950AM	STA 673 042 10 3.0 TR 0930AM 1045AM
1230PM		SOC 452 037 19 3.0 TR 1100AM 1215PM	SPI 102 448 1* 3.0 MWF 0900AM 0950AM	STA 673 043 10 3.0 TR 0930AM 1045AM
1045AM		SOC 452 038 19 3.0 TR 1100AM 1215PM	SPI 102 449 1* 3.0 MWF 0900AM 0950AM	STA 673 044 10 3.0 TR 0930AM 1045AM
0145PM		SOC 452 039 19 3.0 TR 1100AM 1215PM	SPI 102 450 1* 3.0 MWF 0900AM 0950AM	STA 673 045 10 3.0 TR 0930AM 1045AM
0545PM		SOC 452 040 19 3.0 TR 1100AM 1215PM	SPI 102 451 1* 3.0 MWF 0900AM 0950AM	STA 673 046 10 3.0 TR 0930AM 1045AM
0330PM		SOC 452 041 19 3.0 TR 1100AM 1215PM	SPI 102 452 1* 3.0 MWF 0900AM 0950AM	STA 673 047 10 3.0 TR 0930AM 1045AM
0350PM		SOC 452 042 19 3.0 TR 1100AM 1215PM	SPI 102 453 1* 3.0 MWF 0900AM 0950AM	STA 673 048 10 3.0 TR 0930AM 1045AM
		SOC 452 043 19 3.0 TR 1100AM 1215PM	SPI 102 454 1* 3.0 MWF 0900AM 0950AM	STA 673 049 10 3.0 TR 0930AM 1045AM
0545PM		SOC 452 044 19 3.0 TR 1100AM 1215PM	SPI 102 455 1* 3.0 MWF 0900AM 0950AM	STA 673 050 10 3.0 TR 0930AM 1045AM
0330PM		SOC 452 045 19 3.0 TR 1100AM 1215PM	SPI 102 456 1* 3.0 MWF 0900AM 0950AM	STA 673 051 10 3.0 TR 0930AM 1045AM
0350PM		SOC 452 046 19 3.0 TR 1100AM 1215PM	SPI 102 457 1* 3.0 MWF 0900AM 0950AM	STA 673 052 10 3.0 TR 0930AM 1045AM
		SOC 452 047 19 3.0 TR 1100AM 1215PM	SPI 102 458 1* 3.0 MWF 0900AM 0950AM	STA 673 053 10 3.0 TR 0930AM 1045AM
		SOC 452 048 19 3.0 TR 1100AM 1215PM	SPI 102 459 1* 3.0 MWF 0900AM 0950AM	STA 673 054 10 3.0 TR 0930AM 1045AM
0545PM		SOC 452 049 19 3.0 TR 1100AM 1215PM	SPI 102 460 1* 3.0 MWF 0900AM 0950AM	STA 673 055 10 3.0 TR 0930AM 1045AM
0330PM		SOC 452 050 19 3.0 TR 1100AM 1215PM	SPI 102 461 1* 3.0 MWF 0900AM 0950AM	STA 673 056 10 3.0 TR 0930AM 1045AM
0350PM		SOC 452 051 19 3.0 TR 1100AM 1215PM	SPI 102 462 1* 3.0 MWF 0900AM 0950AM	STA 673 057 10 3.0 TR 0930AM 1045AM
		SOC 452 052 19 3.0 TR 1100AM 1215PM	SPI 102 463 1* 3.0 MWF 0900AM 0950AM	STA 673 058 10 3.0 TR 0930AM 1045AM
		SOC 452 053 19 3.0 TR 1100AM 1215PM	SPI 102 464 1* 3.0 MWF 0900AM 0950AM	STA 673 059 10 3.0 TR 0930AM 1045AM
0545PM		SOC 452 054 19 3.0 TR 1100AM 1215PM	SPI 102 465 1* 3.0 MWF 0900AM 0950AM	STA 673 060 10 3.0 TR 0930AM 1045AM
0330PM		SOC 452 055 19 3.0 TR 1100AM 1215PM	SPI 102 466 1* 3.0 MWF 0900AM 0950AM	STA 673 061 10 3.0 TR 0930AM 1045AM
0350PM		SOC 452 056 19 3.0 TR 1100AM 1215PM	SPI 102 467 1* 3.0 MWF 0900AM 0950AM	STA 673 062 10 3.0 TR 0930AM 1045AM
		SOC 452 057 19 3.0 TR 1100AM 1215PM	SPI 102 468 1* 3.0 MWF 0900AM 0950AM	STA 673 063 10 3.0 TR 0930AM 1045AM
		SOC 452 058 19 3.0 TR 1100AM 1215PM	SPI 102 469 1* 3.0 MWF 0900AM 0950AM	STA 673 064 10 3.0 TR 0930AM 1045AM
0545PM		SOC 452 059 19 3.0 TR 1100AM 1215PM	SPI 102 470 1* 3.0 MWF 0900AM 0950AM	STA 673 065 10 3.0 TR 0930AM 1045AM
0330PM		SOC 452 060 19 3.0 TR 1100AM 1215PM	SPI 102 471 1* 3.0 MWF 0900AM 0950AM	STA 673 066 10 3.0 TR 0930AM 1045AM
0350PM		SOC 452 061 19 3.0 TR 1100AM 1215PM	SPI 102 472 1* 3.0 MWF 0900AM 0950AM	STA 673 067 10 3.0 TR 0930AM 1045AM
		SOC 452 062 19 3.0 TR 1100AM 1215PM	SPI 102 473 1* 3.0 MWF 0900AM 0950AM	STA 673 068 10 3.0 TR 0930AM 1045AM
		SOC 452 063 19 3.0 TR 1100AM 1215PM	SPI 102 474 1* 3.0 MWF 0900AM 0950AM	STA 673 069 10 3.0 TR 0930AM 1045AM
0545PM		SOC 452 064 19 3.0 TR 1100AM 1215PM	SPI 102 475 1* 3.0 MWF	

Table of basketball game results for the first half of the season, listing team names, scores, and game numbers.

Table titled 'ADDED COURSES' listing newly added courses with their course numbers, titles, and credit hours.

Table of basketball game results for the second half of the season, continuing the list of teams, scores, and game numbers.

Table titled 'CANCELLED COURSES' listing courses that have been cancelled, including course numbers, titles, and credit hours.

UK

Continued from page 1B. UK 78, Georgia 66. Brown and Junior Braddy paced the Bulldog's leading scorer Litteral...

Mashburn

Continued from page 1B. "There's no limit to how good Mash will be," UK senior forward John Pelphrey said...

Wildcat in double figures. He scored 11 points.

Braddy scored 15 points, a career high. He and Deron Feldhaus, who also scored 15, came off the bench to spark UK's defense...

powerful dunk is. Sometimes, Mashburn looks as though he's taken a liking to another professional Malone — Moses...

He blocked Reggie Tinch's shot, caught the rejection, ignited the fast break — hitting Deron Feldhaus with an outlet pass — and finished the behind-the-back pass from Pelphrey for a layup.

You'd think someone who grew up in New York City would, by nature, be a little bit more offensive-minded. Instead, the son of a former professional boxer, is an defensive type of offensive player.

That kind of killer instinct is not good. The kind Malone shows when finishing a fast break with a

Advertisement for 'The staff at the Kentucky Kernel hopes you had a really jolly Christmas because now it's time for ADD-DROP!' with a call to action to write for the publication.

Table of basketball game results for the third half of the season, listing team names, scores, and game numbers.

CLASSIFIEDS

Call 257-1915

Published 3 times a week
The day before yesterday

For Sale

ALPINE HIGH POWER CABINETE DECK: 35 watts per channel, Dolby, music search, etc. Two 4 1/2 inch Pioneer speakers, two 6 inch Kenwood speakers. \$350. Phone: 223-5323.

LOCAL GOVERNMENT SEIZED CARS, JEeps, 4 x 4s UNDER \$10K FREE 24 HOUR HOTLINE. CALL NOW! (808) 232-4859 OR 232-5870 EXT. UK-10. PARKING SPACES AVAILABLE across from UK Medical Center. Phone: 254-0101.

For Rent

\$412 will rent you a large 2 BR Townhouse with washer/dryer hook-up, 1 1/2 baths and paid gas heat. **ALSAR FARMS 288-2823.**

2 BR APT. Livingroom, eat-in kitchen, off-street parking. Walk to campus. \$400/mo. All utilities paid. 255-4185.

2 BR Duplex: 531 Rosemont Garden. Full basement & garage. \$400/mo. Phone: 277-4630.

4 BR HOUSE ON CAMPUS. WASHER/DRYER INCLUDED. PHONE: 223-2677.

128 TRANSCRIPT: new 2 BR, furnished, kitchen, balcony, air, shower/bath. 1st floor. \$450/mo. plus electric. 268-8298 or 255-3738.

231 LEXINGTON AVE. 4 Bedroom house. Ideal for 4 students. 277-1982 Leave Message.

ALL BILLS PAID. Offering 1, 2, 3, 4 BR apartments. Located off Tates Creek Rd. Call today for appointment. 268-8811.

AVAILABLE NOW: Ericomides, furnished & unfurnished, UK Campus. Pay own electric. Call: 252-5527, 278-0000, Ham.

FEMALE WANTED TO SHARE 3 BR HOUSE. PRIVATE BEDROOM. PAY 1/3 UTILITIES. APPROX. 2 MILES TO CAMPUS. CALL: 277-0455.

FURNISHED STUDIOS: Near UK. Utilities paid. Well maintained. \$285/mo. and up. 254-6400. Flexible lease.

JAMESTOWN APARTMENTS: We've got a new look. Close to UK & Lexington Mall. 2 BRs, 1 1/2 baths. Townhome Design. **NO RENT TIL FEBRUARY.** 2200 Richmond Road. 268-0777.

Private 2 Room Cottage: \$225/mo. \$200 deposit. Utilities paid. Phone: 268-8600.

Help Wanted

COURIER POSITIONS AVAILABLE: Local Courier Service now hiring for expanding market. Flexible part- & full-time hours. Interesting travel. Frequent people contact. Must have clean driving & criminal records. Please apply in person: 10 a.m.-3 p.m., 2nd Courier Service 125 Trade St., Suite K, S.C.C.

Earn \$10.50/hour. Part-time/flexible hours in same. (LEXINGTON AREA). Call: (501) 408-5558.

FUNDRAISER: Looking for a top fraternity, sorority, or student organization that would like to earn \$500-\$1500 for a one week marketing project. Must be organized and hard working. Call JoAnn at (800) 592-2121 Ext. 115.

PART-TIME POSITION AVAILABLE IMMEDIATELY. Close to campus. M-F, 12-6 p.m., \$6/hr. Automotive service center needs person to answer phone, order parts, general office duties. No typing. Apply in person to Rotary Connection 417 S. Mill between 9 a.m. to 5 p.m.

SPRING BREAK '92. EARN FREE TRIPS AND CASH! Campus reps wanted to promote #1 spring break destination, DAYTONA BEACH. Best organized, best price on campus.

Today's Crossword Puzzle

ACROSS
1 Smelly
5 Stations
10 Bounce
13 "A stitch in time saves..."
15 Tomfoolery
16 Cognizant of
17 Instrument
19 Opp. of awe
20 Store fodder
21 Steak
22 Manioba
23 Indian
24 Hoopery defects
25 Chuck
26 Yacht part
30 Numerical prefix
31 Naming
34 Performed
36 Taken as a whole
38 Zlich
39 Picnic contest
42 "... for Two"
43 Middle: law
44 Cobbed up
45 Rewrote
47 UK area
49 Possessive word
50 Vapor
51 Launch
53 Eight 'Ger.
55 Next to Sept.

DOWN
1 Formerly
2 Jungle dweller
3 Hotels
4 Prefix for meter
5 Family member
6 Once Upber
7 Needs that hurt
8 Rake parts
9 Store cover
10 Male animal
11 Excessive
12 Reason of—
13 Accomplished
15 Some RRS
24 The Flam
25 Oscar
26 Not glossy
27 Hurt
28 Adult
29 Golf area
31 Little one: suff.
32 More pleasant
33 Valleys

TODAY'S CROSSWORD PUZZLE

1	2	3	4	5	6	7	8	9	10	11	12	13
14				15					16			
17			18						19			
20							21		22			
			23		24				25			
26	27	28	29	30		31			32	33		
34		35		36		37			38			
39				40					41			
42			43						44			
45			46			47		48	49			
			50			51			52			
53	54			55				56	57	58	59	60
61				62			63					
64				65					66			
				68								
									69			

Personals

Call 1-800-963-8747. STUDENT NEEDED EVENINGS AND SATURDAY MORNINGS AT AV LEARNING LAB. CALL: 252-8456.

STUDENTS: Audio Visual Services needs crew members. Flexible hours. Call: 257-2828.

Roommate Wanted

ROOMMATES NEEDED for large house, 1 or 2 people. \$285/mo. Includes utilities, washer/dryer, cable. Call: 272-1319.

BACK TO SCHOOL PERN OR FOIL HIGHLY TRAINING SPECIALTY 940 industries cut & style. Ask for Beth Degler at Hair Artists 233-8403.

Wanted

NEEDED: Families willing to serve as surrogate patients in Medical School Training Program. Please call Dept. of OB/GYN at 253-5277 for details.

WORD PROCESSING/LASER TYPESETTING: Reports, Dissertations, theses, manuscript, resumes, cover letters, bindings, rotary, fax. Visa/MC. 278-1930. (Near to St. Joseph Hospital). 10% DISCOUNT WITH THIS AD!

AVAILABLE NOW: Ericomides, furnished & unfurnished, UK Campus. Pay own electric. Call: 252-5527, 278-0000, Ham.

FEMALE WANTED TO SHARE 3 BR HOUSE. PRIVATE BEDROOM. PAY 1/3 UTILITIES. APPROX. 2 MILES TO CAMPUS. CALL: 277-0455.

FURNISHED STUDIOS: Near UK. Utilities paid. Well maintained. \$285/mo. and up. 254-6400. Flexible lease.

JAMESTOWN APARTMENTS: We've got a new look. Close to UK & Lexington Mall. 2 BRs, 1 1/2 baths. Townhome Design. **NO RENT TIL FEBRUARY.** 2200 Richmond Road. 268-0777.

Private 2 Room Cottage: \$225/mo. \$200 deposit. Utilities paid. Phone: 268-8600.

FUNDRAISER: Looking for a top fraternity, sorority, or student organization that would like to earn \$500-\$1500 for a one week marketing project. Must be organized and hard working. Call JoAnn at (800) 592-2121 Ext. 115.

PART-TIME POSITION AVAILABLE IMMEDIATELY. Close to campus. M-F, 12-6 p.m., \$6/hr. Automotive service center needs person to answer phone, order parts, general office duties. No typing. Apply in person to Rotary Connection 417 S. Mill between 9 a.m. to 5 p.m.

SPRING BREAK '92. EARN FREE TRIPS AND CASH! Campus reps wanted to promote #1 spring break destination, DAYTONA BEACH. Best organized, best price on campus.

FREE PREGNANCY TESTING Abortion Services 278-0214

CONFIDENTIAL PREGNANCY ASSISTANCE Birthright 2134 Nicholasville Rd. 277-2635

Needed: Healthy females ages 19 to 35 to act as instructors for the Physical Diagnosis Course for Medical Students, \$40 for each 2-hour session (Tuesday 2-6 p.m. with exception of Friday, March 6, 2-5 p.m.) for 6 weeks, Feb. 4 - March 31, 1992. Please contact Nancy Bishop, 233-4511 ext. 4431 8 a.m.-4:30 p.m.

Hey, do you know this guy?



If so, we may need to talk!

The staff at the Kentucky Kernel proudly announces the 40th, we repeat,

40TH

(and that is NOT a misprint)

Birthday

of its beloved oppressor, Michael Agin

Please drop by to receive your cake and armbands during the wake (oops, party) on Tuesday, January 14th.

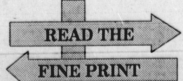
No respect, er, no presents, please. **JUST WEAR BLACK.**

Hey Mike, ain't it nice to know you're loved?



Are you looking for valuable experience in advertising sales? We've got the job for you.

The Kentucky Kernel has an immediate opening for a sales representative position.



- Sales experience helpful, not necessary
- Mkt/Bus. majors encouraged to apply
- Sophomore or Junior standing preferred
- Must have vehicle
- Paid on commission basis

Apply in person or send resumé to:
Lisa Tatum-Draper
Kentucky Kernel
026 Journalism Bldg., UK
Lexington, KY 40506-0042

KENTUCKY KERNEL

Editor in Chief
Victoria Martin

Managing Editor
Dale Greer

Associate Editor
Gregory A. Hall

Design Editor
Brian Kent

Editorial Editor
N. Alan Cornett

Sports Editor
Tim Wiesenhan

Assistant Sports Editor
John Kelly

Arts Editor
Hunter Hayes

Editorial Cartoonist
Jerry Voigt

Photography Editor
Greg Eans

News Assistant
Keiley Popham

Newsroom Phone
257-1915

General Manager
Mike Agin

Production Manager
Robin Jones

Night Production Manager
Brian Aker

Advertising Director
Lisa Tatum Draper

Display Advertising
(606) 257-2872

Classified Advertising
(606) 257-2871

The Kentucky Kernel is published on class days during the academic year and weekly during the summer session.

Third-class postage paid at Lexington, Kentucky 40511. Mailed subscription rates are \$40 per year.

Readers are encouraged to submit letters and guest opinions to the Kentucky Kernel in person or by mail.

Writers should address their comments to: Editorial Editor, Kentucky Kernel, 035 Journalism Building, University of Kentucky, Lexington, KY 40506-0042.

Letters should be 350 words or less, while guest opinions should be 850 words or less.

We prefer all material to be type written and double-spaced, but others are welcome if they are legible.

Writers must include their name, address, telephone number and major classification or connection with UK on all submitted material. Frequent contributors can be limited so we may publish letters from as many writers as possible.

We reserve the right to edit all material.

The Kentucky Kernel Like it or not, it's YOUR student newspaper!



Your Official
UNIVERSITY OF
Kentucky
Bookstore

**Our Huge Supply
of
USED
TEXTBOOKS
SAVES YOU
25%**

We Have the Most!

OPEN UNTIL

Mon. 8 pm
Tue. 8 pm
Wed. 9 pm
Thur. 9 pm
Fri. 6 pm
Sat. 5 pm

106 Student Center Annex • 257-6304

