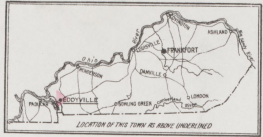


1

1



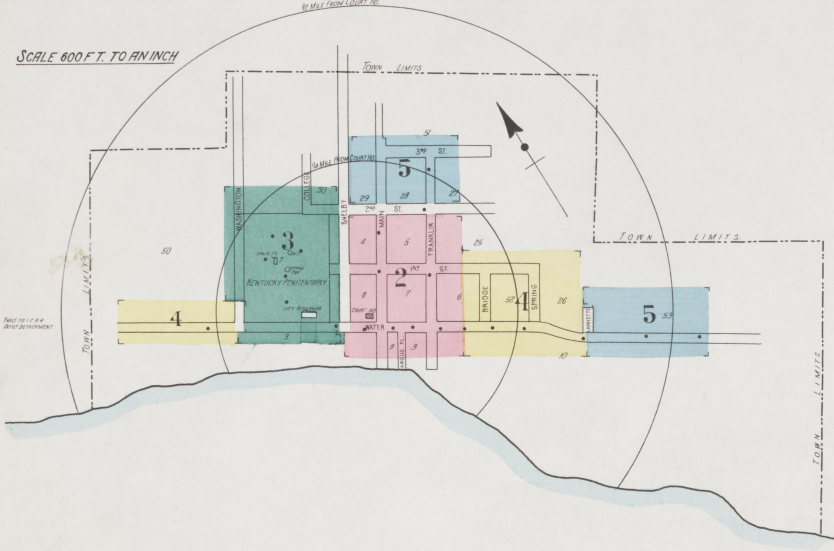
KEY
FIRE WALLS AND ROOF
MEDICAL OFFICE
SCHOOL
WATER TOWER
STABLE (C.B.)
CONCRETE BLOCK
BRICK
WOOD
IRON
STEEL
GLASS
COPPER
ZINC
ALUMINUM
CERAMIC
PAINT
PAPER
GLASS
CERAMIC
PAINT
PAPER



OCT -7 1925

DLF 44587

SCALE 600 FT. TO AN INCH



Cumberland River

WATER FACILITIES:

Owned by State of Kentucky. Source: Cumberland River. Gravity system. City Reservoir capacity 300,000 Gals. Elevated as shown. Business section filled by concrete construction. Includes water tower, 200 feet high, 14 ft. dia., at 200 ft. and 100 ft. in Penitentiary. Average daily consumption 30,000 Gals. Storage pressure in Business Section 30 lbs.

FIRE DEPT.

Entirely volunteer. No fire station. 400' hose. Alarm by bells & telephone. No fire limits.

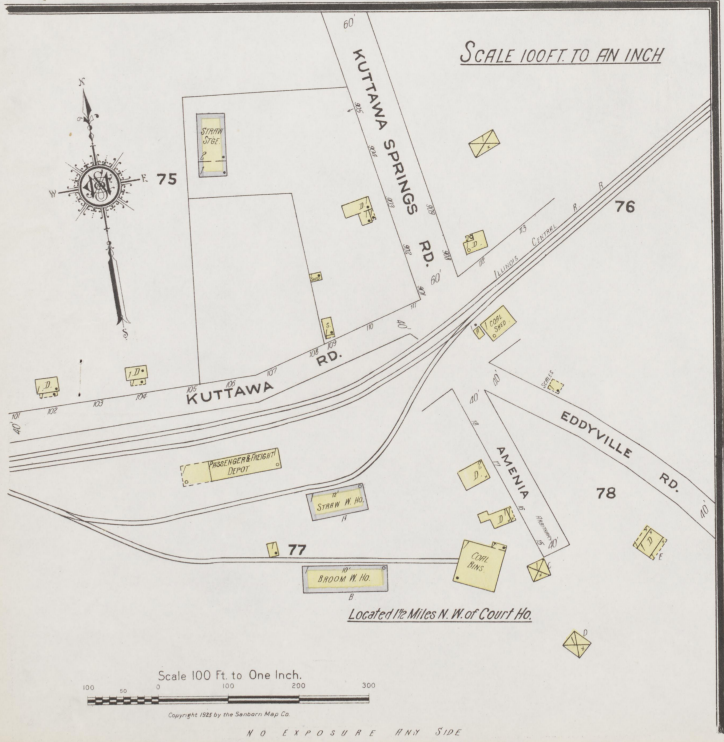
Main Streets graveled. Grades nearly level. Public lights. Street

INDEX

Table with columns for STREETS and SPECIALS. Streets listed include Water, Argus Place, Bridge, College, Eddyville Road, First, Franklin, Kuttawa Road, Lafayette, Main, Second, Spring, Third, Washington, and Water. Specials listed include Alexander, R. A., Ice Plant, Baptist Church, County Court House and Jail, Dark Tobacco Growers' Co-operative Assoc., Eddyville Graded School, Hotel Gaines, I. C. R. R. Depot, Kentucky Penitentiary, Whip & Collar Co., Horse Collar Pac., Lester Hotel, Louisville Broom Works, Masonic Hall, Methodist Episcopal Church, Post Office, Telephone Exchange Building, and Worthy Mfg Co., Clothing Factory, Shirt Factory.

NOTE.—House Numbers given are arbitrary.

SCALE 100 FT. TO AN INCH



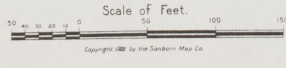
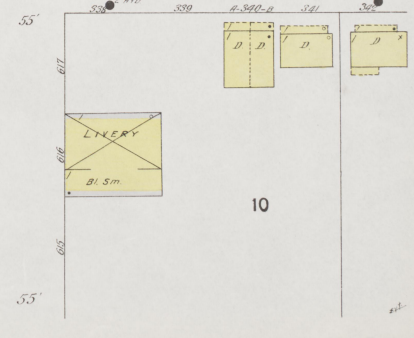
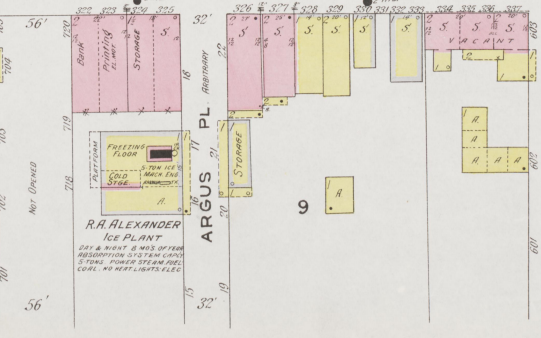
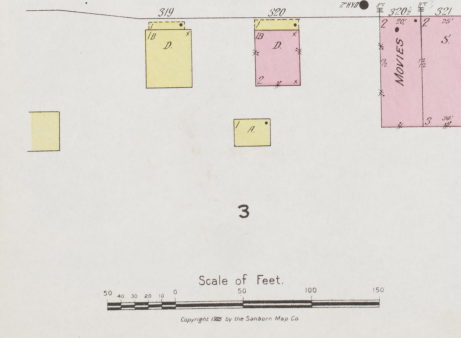
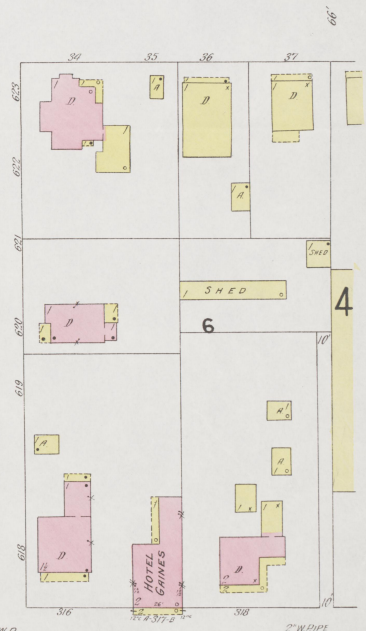
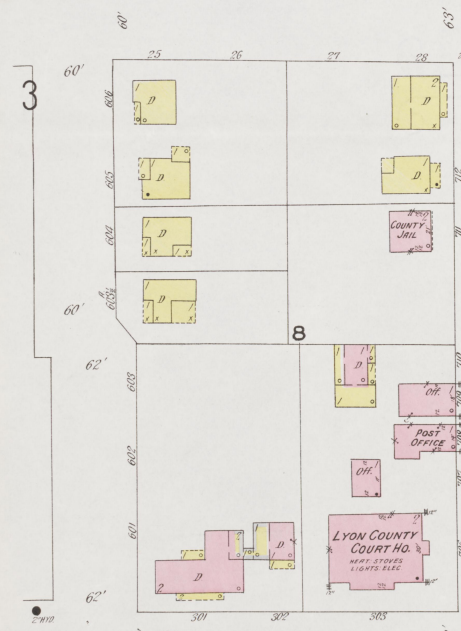
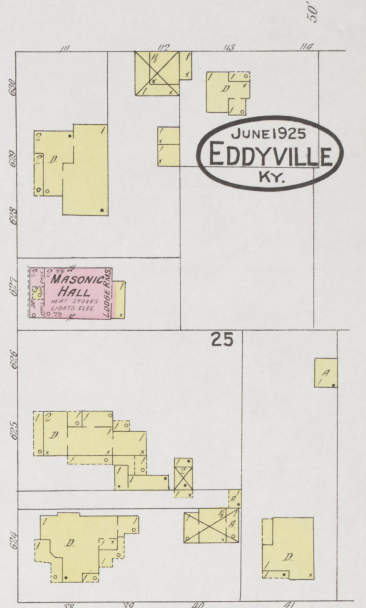
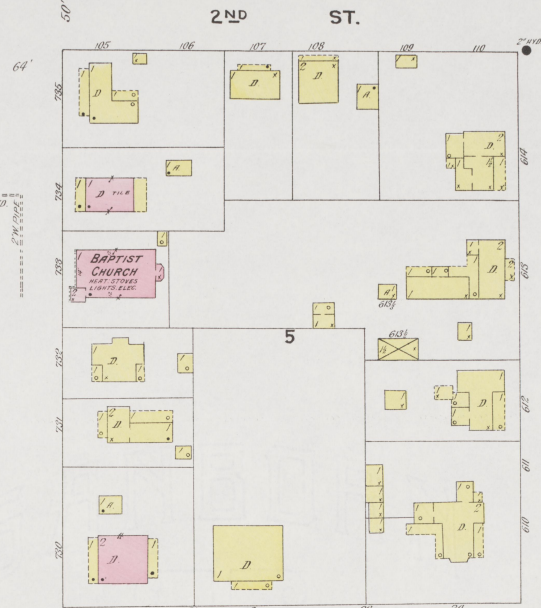
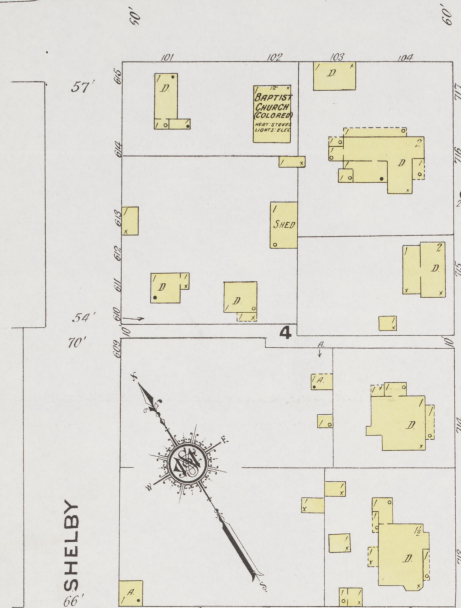
Located 1 1/2 Miles N.W. of Court Ho.

Scale 100 Ft to One Inch

Copyright 1922 by the Sanborn Map Co.

NO EXPOSURE ANY SIDE







3



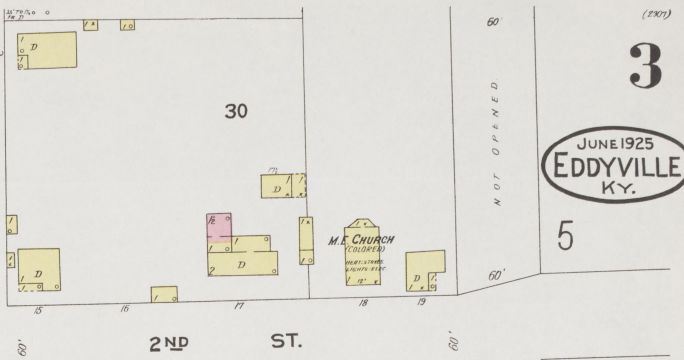
COLLEGE

(200)

3

JUNE 1925  
EDDYVILLE  
KY.

5



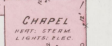
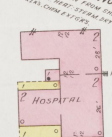
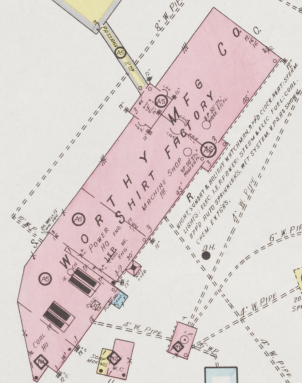
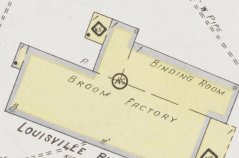
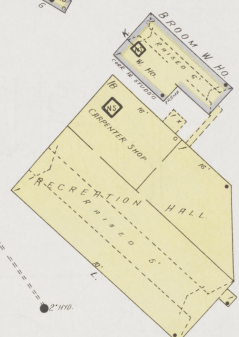
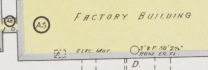
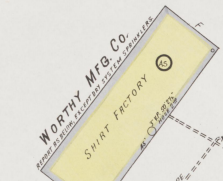
2ND ST.

50

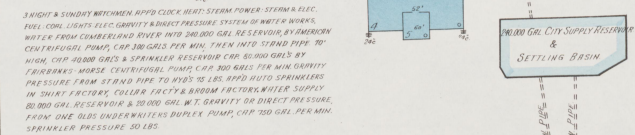
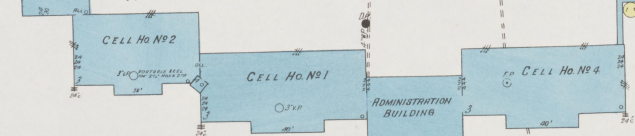
WASHINGTON

4

THE KENTUCKY WHIP & COLLAR CO.  
HORSE COLLAR FACTORY



KENTUCKY PENITENTIARY



3 NIGHT & SUNDAY WATCHMEN, 8:00 P.M. - 4:00 A.M.; STEAM POWER, STEAM & ELEC. PUMP, COAL, LIGHTS, ELEC. GRAVITY & DIRECT PRESSURE SYSTEM OF WATER WORKS. WATER FROM COVERLAND RIVER INTO 200,000 GAL. RESERVOIR, BY AMERICAN CENTRIFUGAL PUMPS, CAP. 300 GALS. PER MIN. TAKEN INTO STAND PIPE BY 10" DIA. 100-FOOT DIA. & SPRINKLER RESERVOIR CAP. 50,000 GALS. BY 2 1/2" DIA. HORSE CENTRIFUGAL PUMPS CAP. 300 GALS. PER MIN. GRAVITY PRESSURE FROM STAND PIPE TO 10" DIA. 10-FOOT DIA. INTO SPRINKLERS IN SHIRT FACTORY, COLLAR FACTORY, BROOM FACTORY, WATER SUPPLY 20,000 GAL. RESERVOIR & 10,000 GAL. W.T. GRAVITY OR DIRECT PRESSURE FROM ONE OLD UNDERWATERS DUPLEX PUMP, CAP. 750 GAL. PER MIN. SPRINKLER PRESSURE 50 LBS.

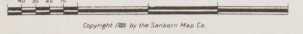
WATER

1ST ST.

SHELBY

2

Scale of Feet.



3

Copyright 1925 by the Standard Map Co.

63



4

3  
JUNE 1925  
EDDYVILLE  
KY.

WASHINGTON  
4  
3

50

WATER

3

25

1ST ST.

2

6

BRIDGE

52  
(25)

SPRING

26

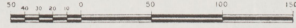
EDDYVILLE  
GRADED SCHOOL

LAFAYETTE  
5

WATER

10

Scale of Feet.



Copyright 1925 by the Southern Map Co.





5



(2307)

5

3  
SHELBY

29

MAIN

28

FRANKLIN



27

WORTHY MFG CO.

CLOTHING FACTORY

2ND ST.

2

4  
LAFAYETTE

STORAGE OF HOGSHEAD TOBACCO  
NO HEAT NO LIGHTS

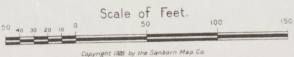
DARK TOBACCO GROWERS CO-OPERATIVE ASSN  
HEAT - STORES LIGHTS - BLES - CREAM - EXTRA

53

REHANDLING & DRYING  
REHANDLING & DRYING  
RECEIVING  
FRIZZING

WATER

10



Copyright 1925 by the Sanborn Map Co