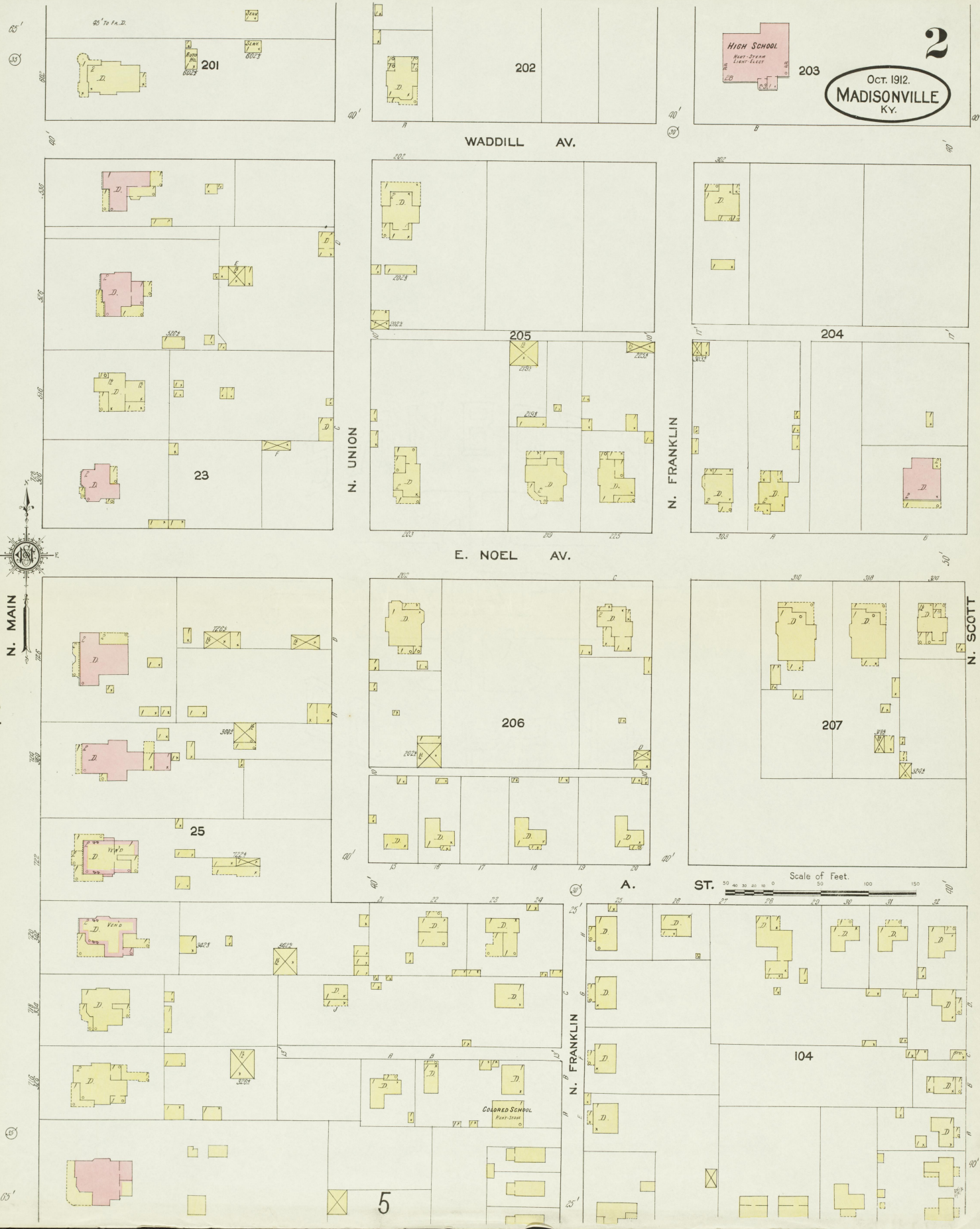




OCT. 1912.  
MADISONVILLE  
KY.

HIGH SCHOOL  
Heat-Plant  
Linen-Plant



WADDILL AV.

E. NOEL AV.

N. MAIN

N. UNION

N. FRANKLIN

N. SCOTT

12

201

202

203

23

205

204

206

207

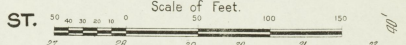
25

A.

104

5

Scale of Feet.









OCT. 1912.  
MADISONVILLE  
KY.

4

6

W. CENTRE

3

7

WILLARD HOTEL

THE McLEOD STORE

HOTEL GRAND

T. & M. PASSENGER DEPOT

BEING BUILT TO BE MILLS

FURNITURE

10

SUGGS

S. SEMINARY

S. MAIN

7

Y.M.C.A.  
HEAT, STEAM,  
LIGHTS, ELEC.  
MAGAZINE  
P.O. 1ST

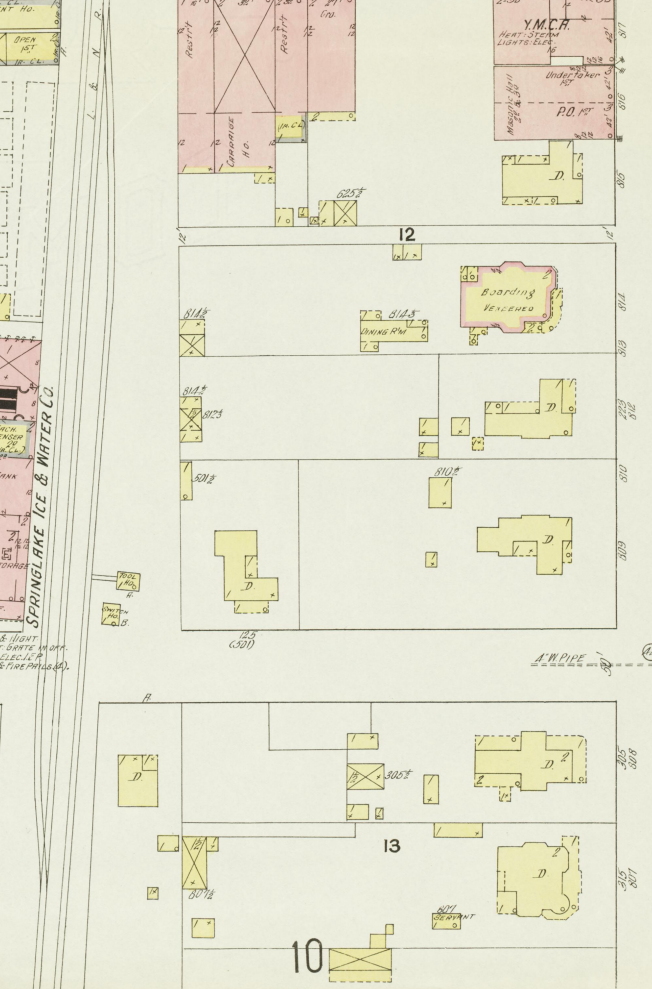
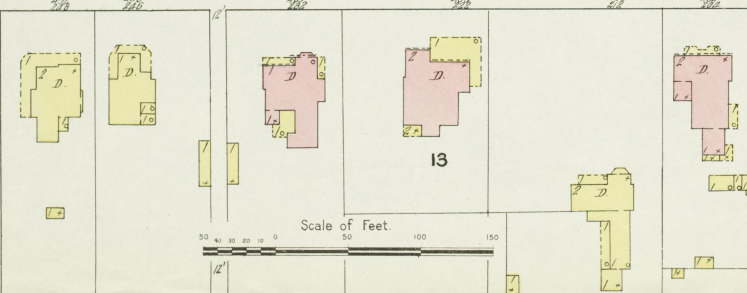
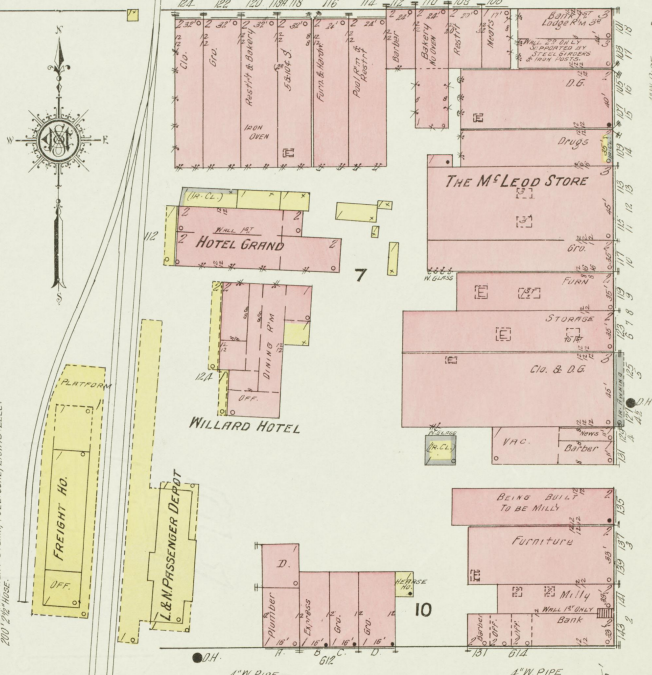
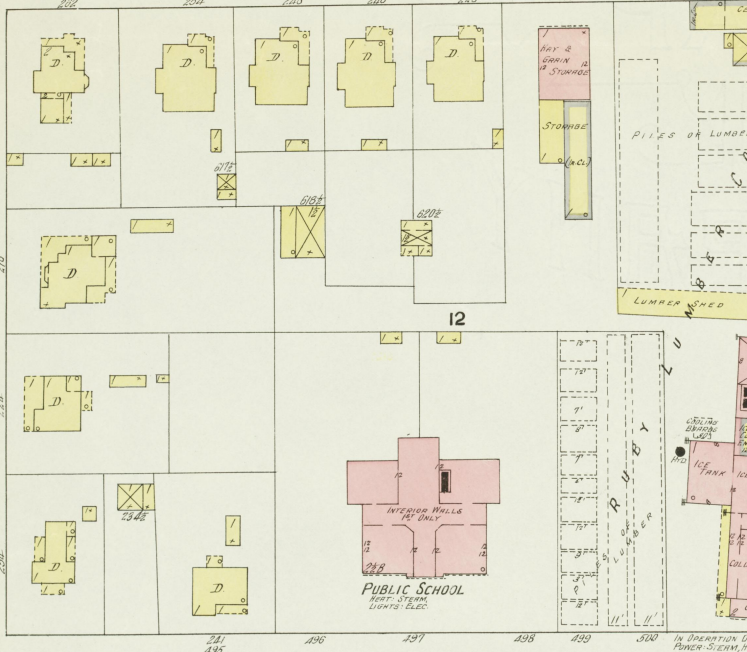
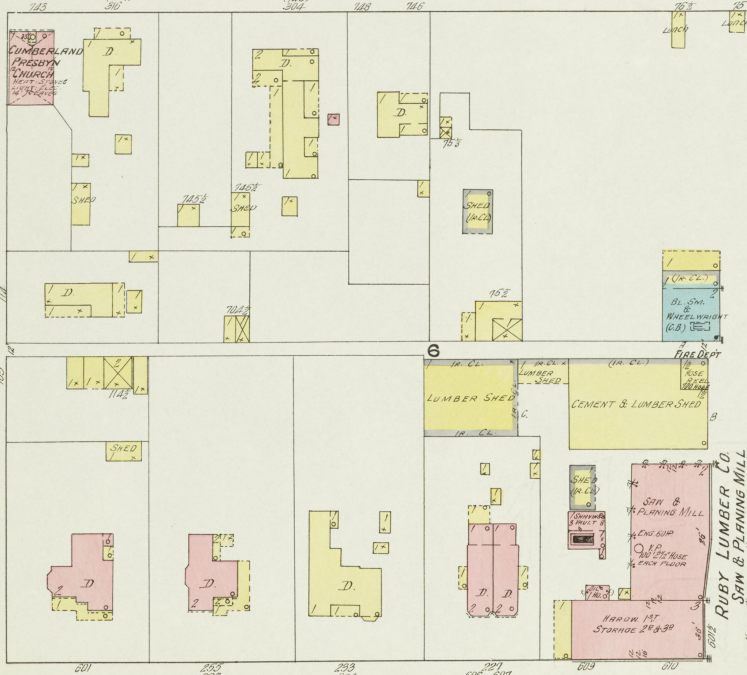
BOARDING  
RECEIVED  
DINING RM.  
12

PUBLIC SCHOOL  
HEAT, STEAM,  
LIGHTS, ELEC.

SPRINGLAKE ICE & WATER CO.  
ICE TANK  
ICE TANK  
COLD STORAGE  
OFF.

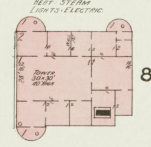
W. BROADWAY

Scale of Feet  
0 50 100 150

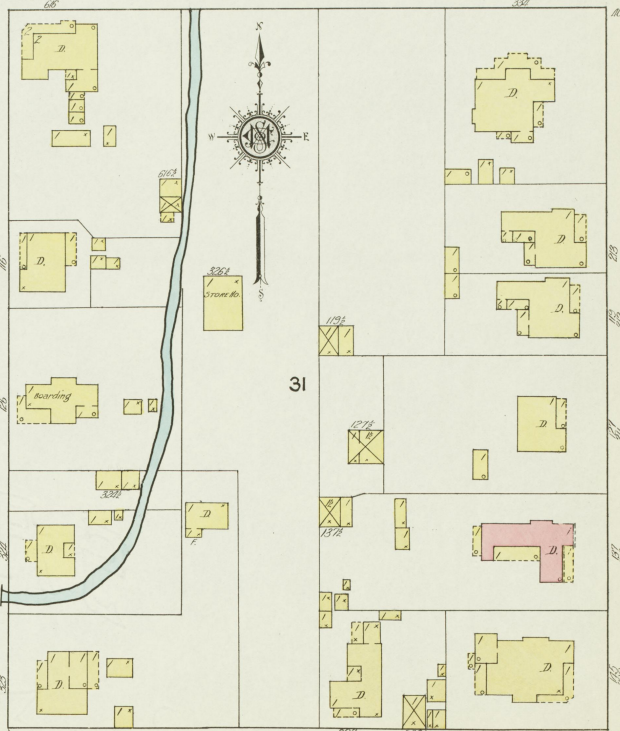
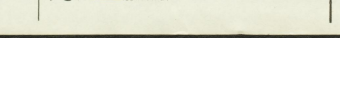
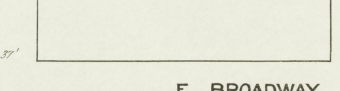
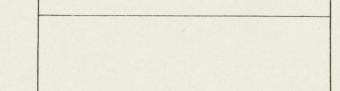
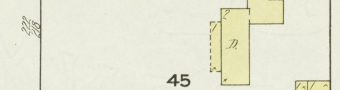
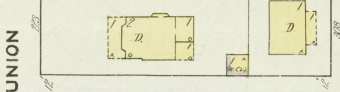
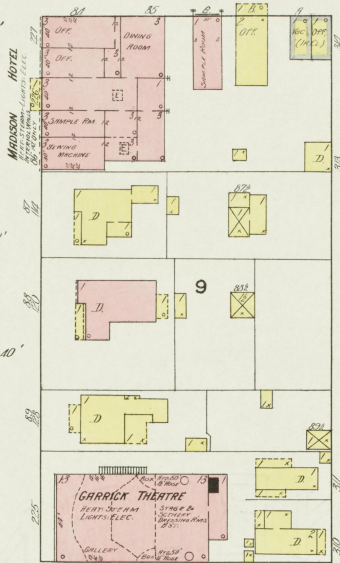


E. CENTRE

COUNTY COURT HOUSE

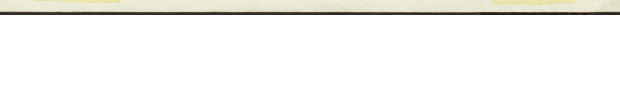
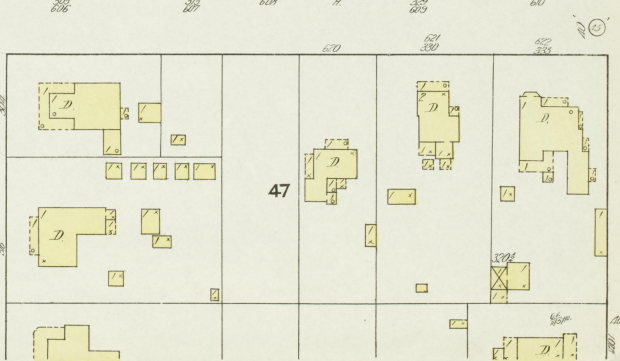
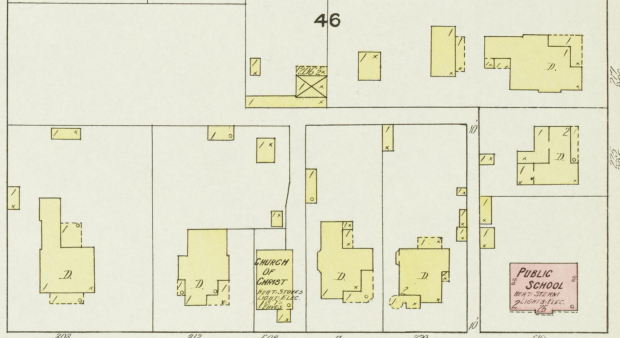
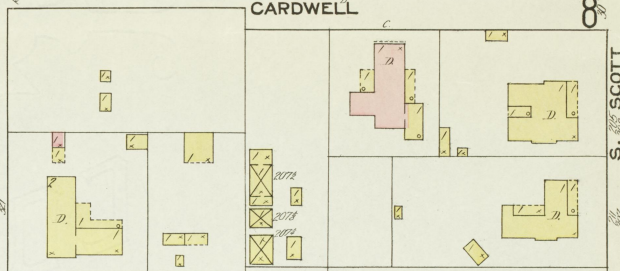


COURT



CARDWELL

8



6

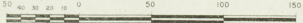
S. MAIN

S. UNION

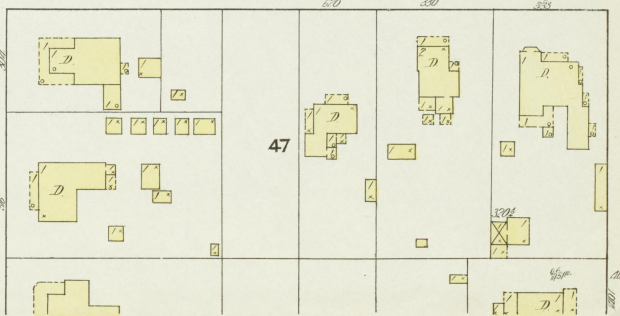
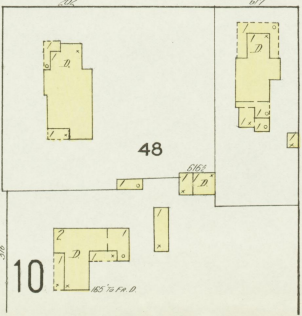
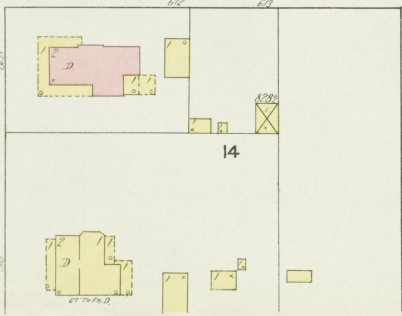
S. FRANKLIN

S. SCOTT

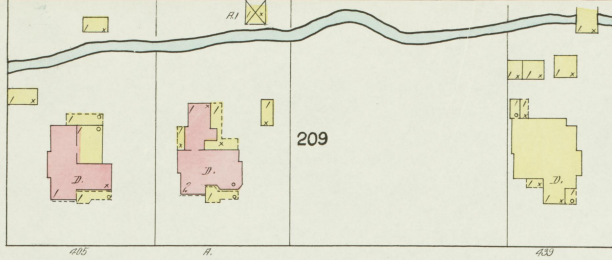
Scale of Feet.



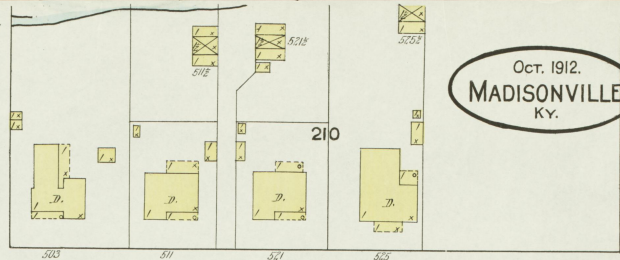
E. BROADWAY



N. SCOTT



N. ISLAND FORD



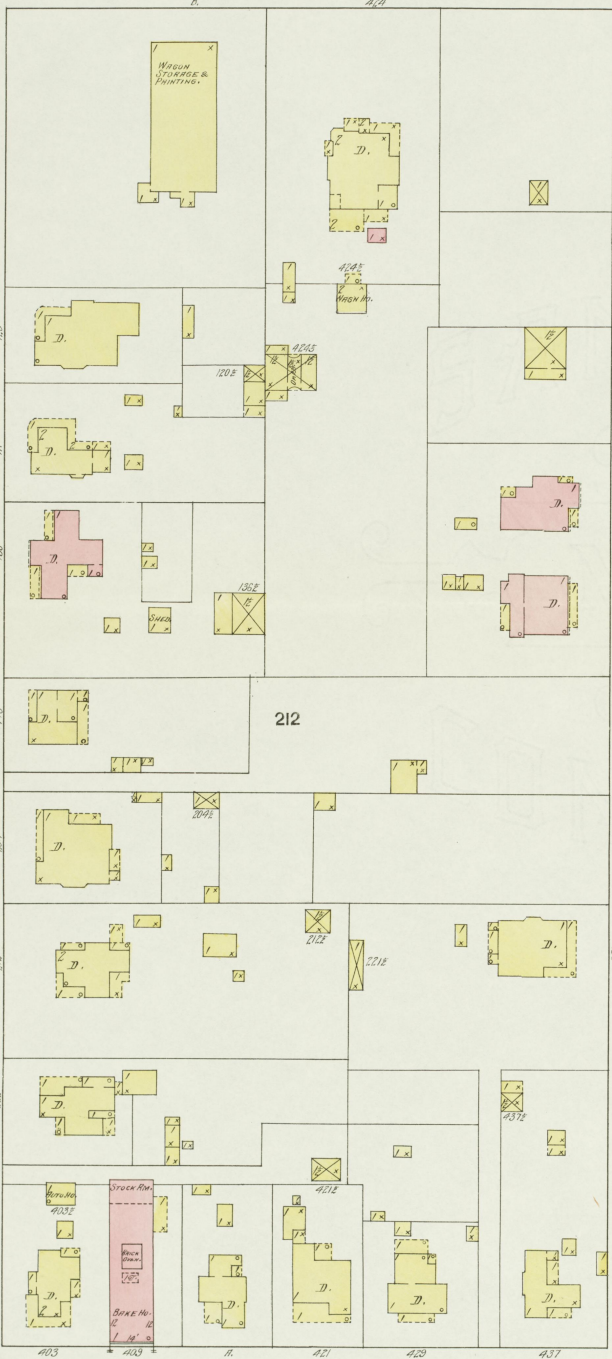
Oct. 1912.  
MADISONVILLE  
KY.

N. HARRIG

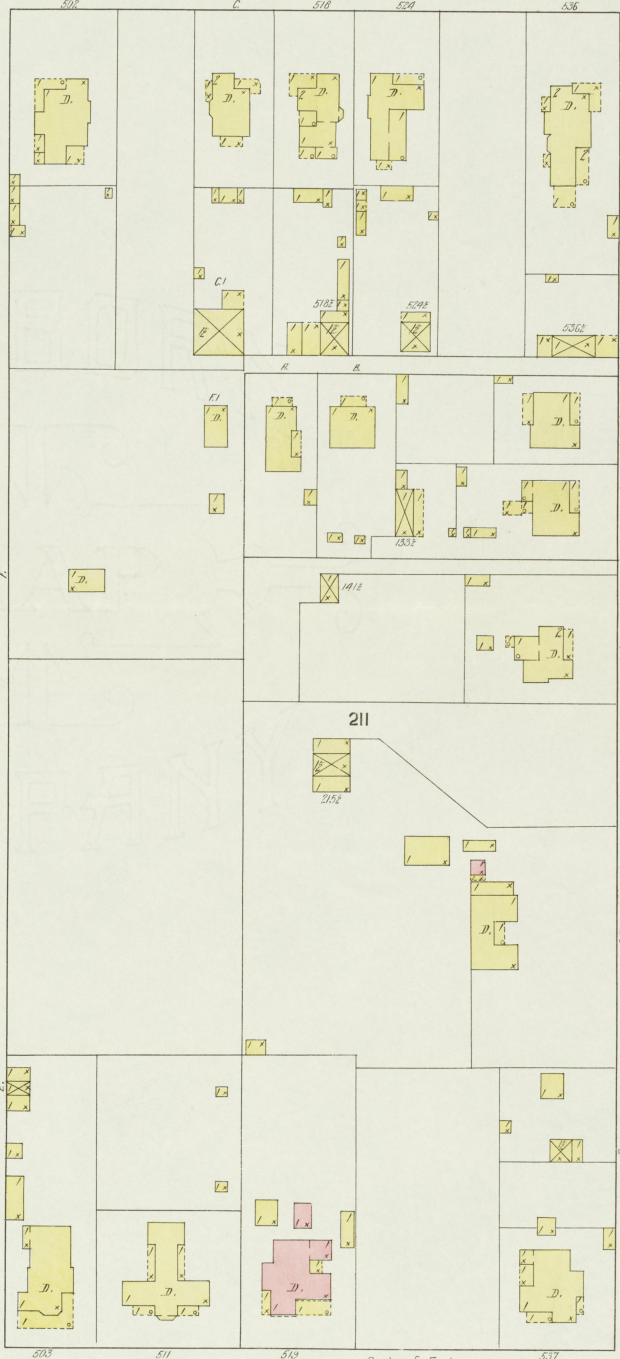
8

E. CENTRE

S. SCOTT

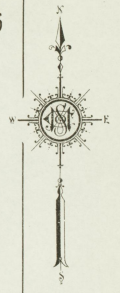


S. ISLAND FORD

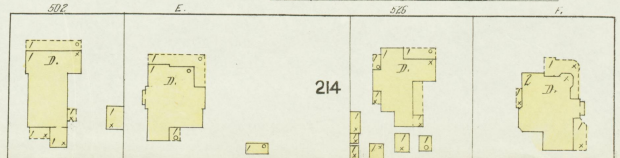
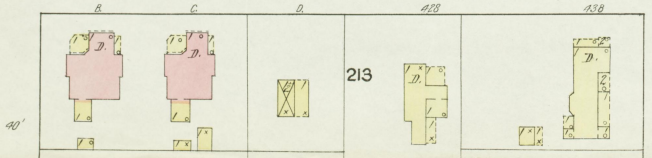
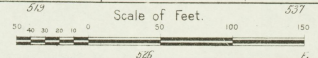


S. HARRIG

9



E. BROADWAY



C.M. & G.



N. HARRIG

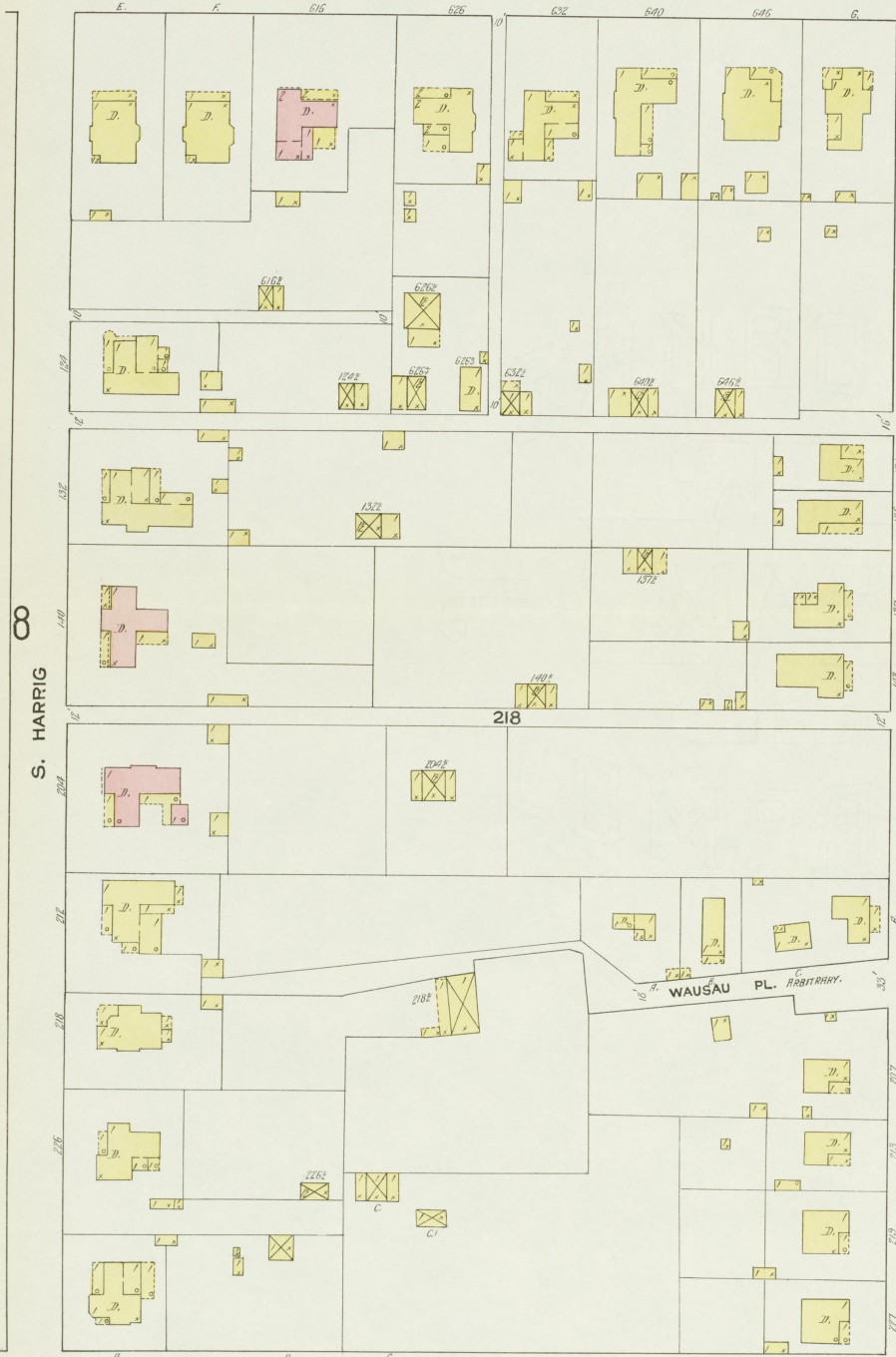
N. DAVES

Oct. 1912.  
MADISONVILLE  
KY.

9

220

E. CENTRE



S. HARRIG

S. DAVES

BROOM FACTORY

CHARLEVOIX PL. ALLEYWAY

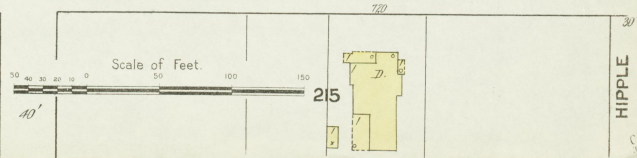
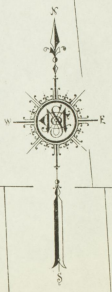
WAUSAU PL. ALLEYWAY

HODGE

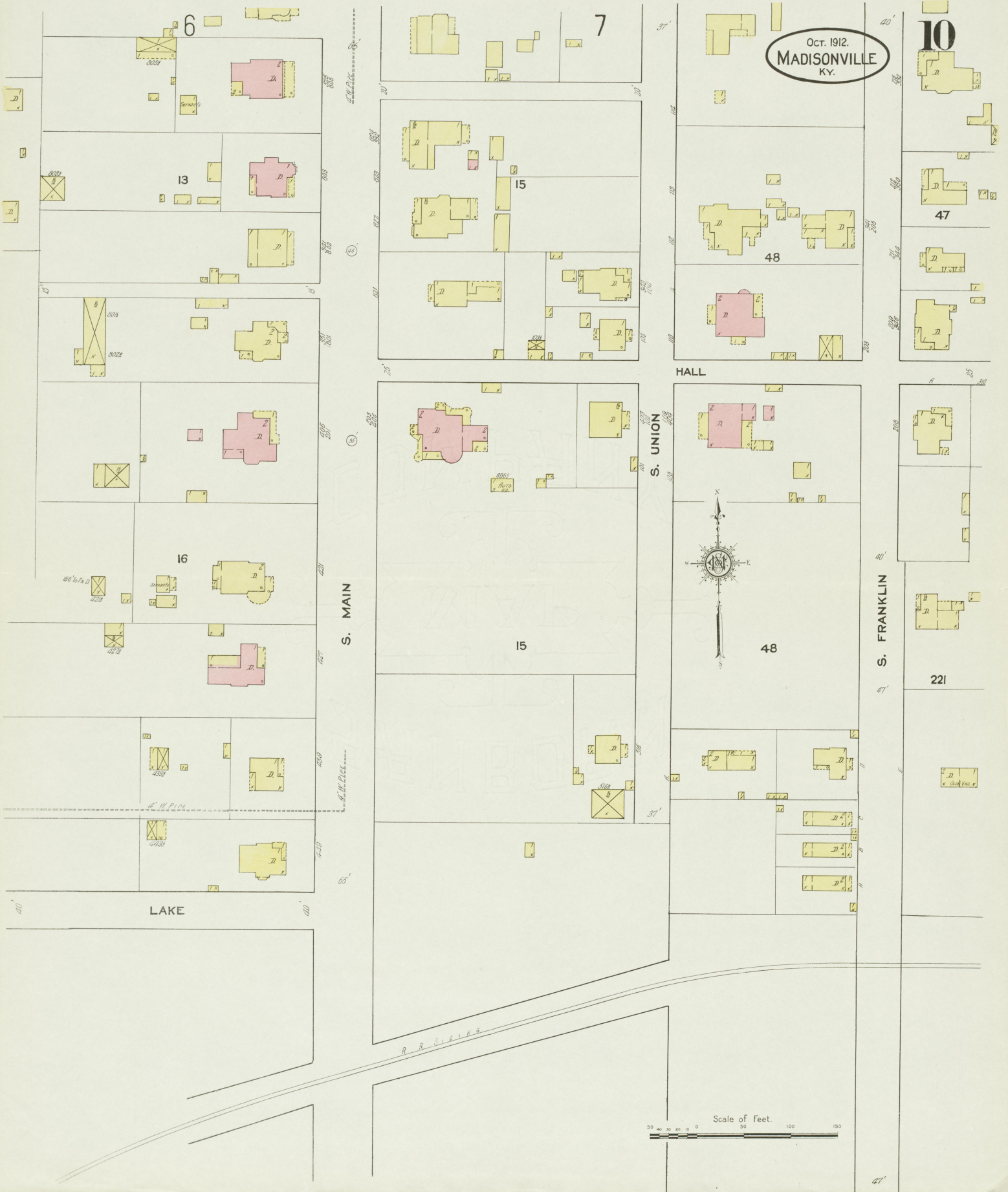
E. BROADWAY

Scale of Feet.

HIPPLE



Oct. 1912.  
MADISONVILLE  
KY.



S. MAIN

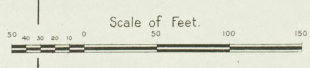
S. UNION

S. FRANKLIN

HALL

LAKE

R.R. S.W.I.N.G.



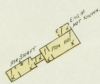
N O E X P O S U R E .

OFF



**THE COIL COAL CO.**

2 NIGHT WATCHMEN, NO CLOCK  
HEAT & POWER, STEAM, LIGHTS, ELEC.  
FUEL COIL, 300' 12" HOSE & 4000 GAL.  
WATER TANK.



N O E X P O S U R E A N Y S I D E

Spring Lake.

Oct. 1912.  
**MADISONVILLE**  
KY.

**II**



**SPRING LAKE ICE & WATER CO'S  
PUMPING STATION**  
IN OPERATION DAY & NIGHT HEAT R.  
POWER, STEAM, LIGHTS, ELEC. ETC.  
FUEL COIL, 1-12" DIAMETER HORSE PLUMP  
12 X 12 1/2. CAPACITY 3500 GALS PER MIN.



**THE MADISONVILLE CANNING CO.**

NO PARTIALLY HEAT & POWER STEAM  
FUEL COIL, LIGHTS, ELEC. ETC.

101

BUCKEYE (CHURCH)

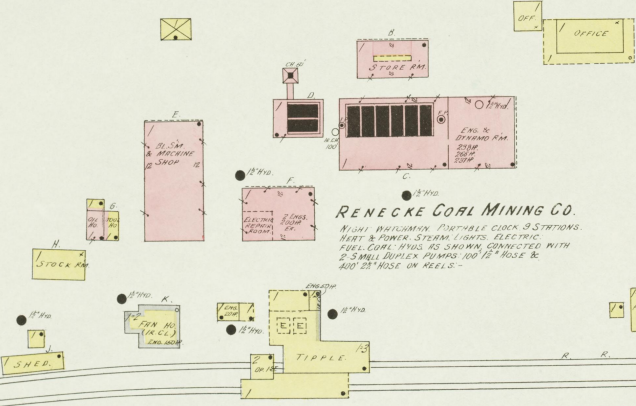


102

PROVIDENCE BRANCH R.R.

N O E X P O S U R E A N Y S I D E

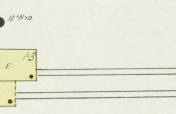
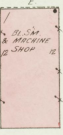
W. NOEL AV.



**RENECKE COAL MINING CO.**

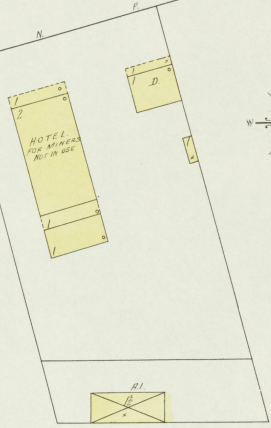
4 1/2 HOURS WATCHMEN, PORTABLE CLOCK, 9 STATIONS.  
HEAT & POWER, STEAM, LIGHTS, ELECTRIC.  
FUEL COIL, 18" X 42" 3/4" DIA. CONNECTED WITH  
2-5" SMALL DUPLEX PUMPS, 100' 12" HOSE &  
200' 22" HOSE ON REELS.

STOCK PEN



R. R. SLIDING

PROVIDENCE BRANCH R. R.



Located 1/4 Miles N.W. of Court Ho.

