

Bonded W. H. H. No. 1000

KEY

SHEDS	IRON MILL ON ROOF
SHEDS	METAL CORNICE
SHEDS	SHEDS WITH IRON ROOF
SHEDS	WOOD CORNICE
SHEDS	FRAM PARTITION
SHEDS	DRAINING WITH IRON DOOR
SHEDS	"STANDARD"
SHEDS	IRON DOOR
SHEDS	WINDSOR & IRON SHEDS
SHEDS	WINDOW HE STORY
SHEDS	WINDOW HE STORIES
SHEDS	218 417
SHEDS	STABLES
SHEDS	BUILDINGS COLORED YELLOW ARE FRAME
SHEDS	RED
SHEDS	WHITE
SHEDS	STONE
SHEDS	BROWN
SHEDS	DOOR
SHEDS	GREEN
SHEDS	SPECIALS
SHEDS	INDICATE RELATIVE HEIGHTS
SHEDS	FIRE STATION AS SHOWN BY KEY
SHEDS	ALTERNATE STREET NUMBERS ARE ACTUAL
SHEDS	CONSECUTIVE STREET NUMBERS ARE ARBITRARY

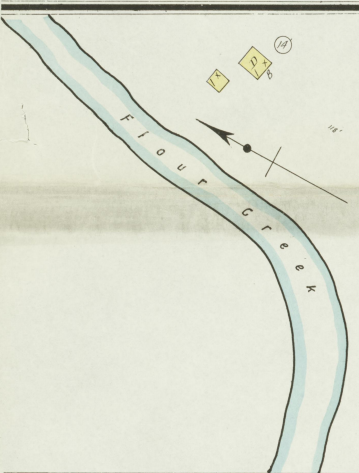


**Q. W. COWLES**  
Registered Distillery No 30  
6th District, Pendleton Co., Ky.  
PRODUCT: HAND MADE SOUR MASH BOURBON WHISKEY

MASH CAPACITY 30 BUSHELS, DISTILLING CAPACITY THREE BARRELS PER DAY. RUN 5 HOURS PER YEAR. NO WOOD-ASH IN FIRE APPARATUS. LIGHTS: NONE. OIL LAMP. REST: STORE IN OFFICE. FUEL: WOOD AND COAL.

WATER FACILITIES: 50 public wells, FIRE DEPT. LAMPERS, 3 men paid for water. MAIN LINE BURNING LINE. TANKS: 100 GAL. AND 2 LAMP. ABSORBENT TANK. WATER IN DIRT. Grades about level. Street graded.

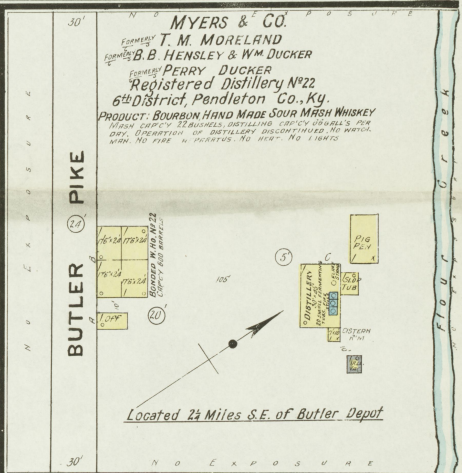
Located 3 1/2 Miles S.W. of Butler Depot  
NO EXPOSURE ANY SIDE



**H. E. DUCKER**  
FORMERLY J. DUCKER & SON  
Registered Distillery No 31  
6th District, Pendleton Co., Ky.  
PRODUCT: HAND MADE SOUR MASH BOURBON WHISKEY

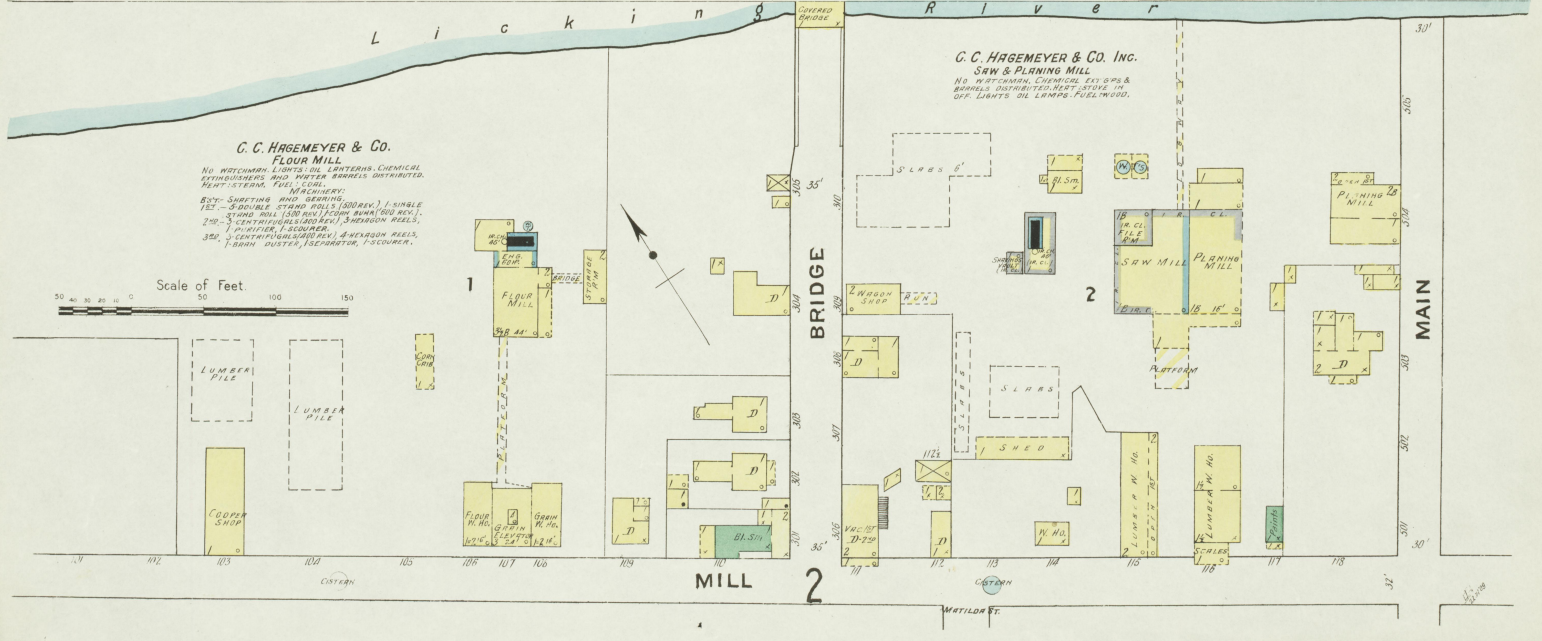


Located 2 Miles S.E. of Butler Depot  
NO EXPOSURE ANY SIDE



**MYERS & CO.**  
FORMERLY T. M. MORELAND  
FORMERLY B. B. HENSLEY & W. M. DUCKER  
FORMERLY PERRY, DUCKER  
Registered Distillery No 22  
6th District, Pendleton Co., Ky.  
PRODUCT: BOURBON HAND MADE SOUR MASH WHISKEY

Located 2 1/2 Miles S.E. of Butler Depot  
NO EXPOSURE



**C. C. HAGEMEYER & CO.**  
FLOUR MILL  
NO WATCHMAN, LIGHTS, OIL, LAMPERS, CHEMICAL EXTINGUISHERS AND WATER BARRELS DISTRIBUTED. FUEL: STEAM, FUELWOOD.

Scale of Feet

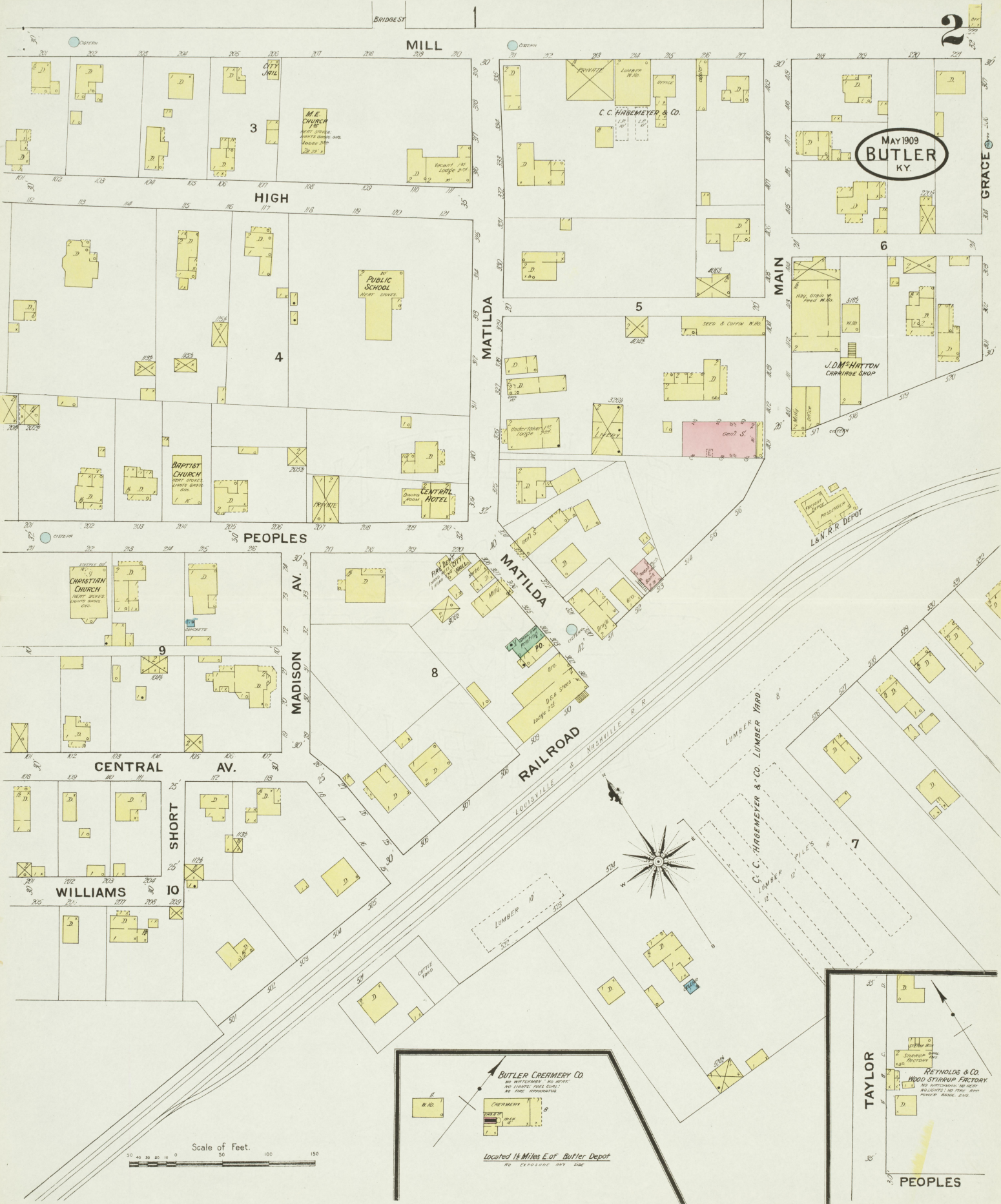
**C. C. HAGEMEYER & CO. INC.**  
SAW & PLANING MILL  
NO WATCHMAN, LIGHTS, OIL, OILS & BARRIERS DISTRIBUTED. REST: STORE IN OFF. LIGHTS: OIL LAMP. FUELWOOD.

MILL

2

BRIDGE

MAIN



MAY 1909  
BUTLER  
KY.

**BUTLER CREAMERY CO.**  
 NO WATER - NO HEAT  
 NO LIGHTS - NO GAS  
 NO FIRE APPARATUS

CREAMERY

Located 1/4 Miles East Butler Depot  
 NO EXPLOSION HAZARD

**REYNOLDS & CO.**  
 WOOD STAMPING FACTORY  
 NO WATER - NO HEAT  
 NO LIGHTS - NO GAS  
 NO FIRE APPARATUS

STAMPING

TAYLOR

PEOPLES