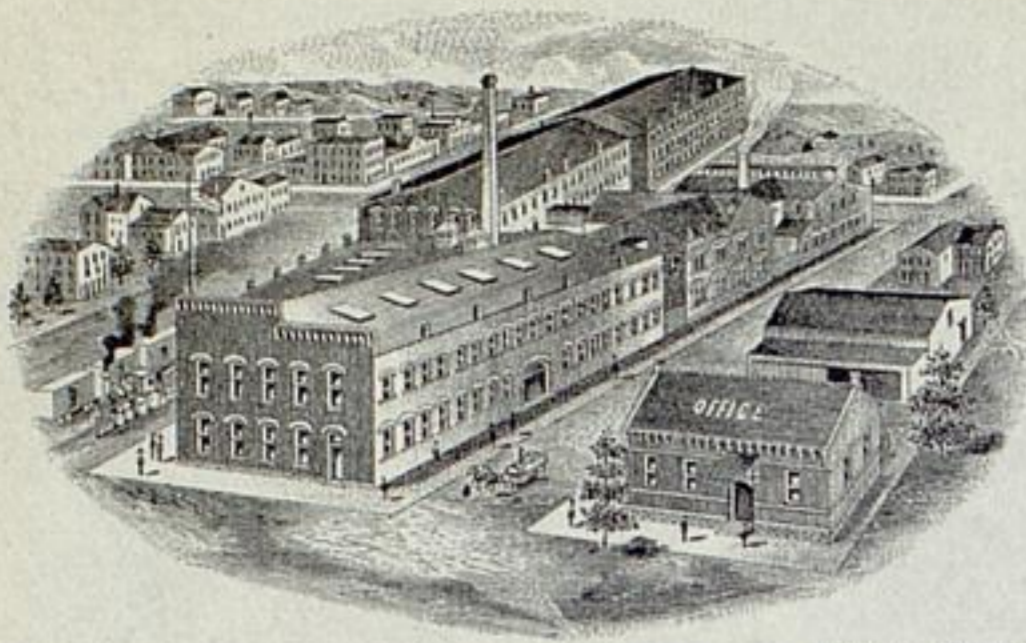


L.M. JOHNSTON, Prest

JAMES TURPIN, Vice Prest.

A.M. SULLIVAN, Secy. & Treas.



OFFICE & WORKS:  
DALE AVENUE AND WEST SECOND ST.

BELL TELEPHONE 1602

HOME " 3602

LIEBERS CODE USED.

# THE NEW ERA GAS ENGINE CO.

WALKER LITHO. CO. DAYTON, O.

MANUFACTURERS OF

## NEW ERA GAS AND GASOLINE ENGINES.

NEW ERA  
FRICTION CLUTCH  
PULLEYS.

Dayton, O. **JAN 3 1906** 190

Dear Sir:

We are informed that you are in the market for a gas or gasoline engine. If so, we would like very much to have an opportunity of submitting a proposal for a "New Era" or "Little Giant."

We are building engines in sizes as follows:

Single Cylinder, Vertical, 1 1/2, 3 and 4 1/2 H. P.

Single Cylinder, Horizontal, from 5 to 120 H. P.

and believe that we can give you a more modern, high grade, up-to-date engine than you can get elsewhere, and one that is simple, easy to handle, and easily understood.

We enclose a postal card, with our address printed thereon, which we will be glad to have you fill out if in the market for power. If you are NOT in the market PLEASE SO STATE on the card, that we may not annoy you with unnecessary correspondence.

Very truly yours,

THE NEW ERA GAS ENGINE CO.