

**UK**

# FACT BOOKLET 2010-2011

**see blue.**  
*in everything we do*

UNIVERSITY OF KENTUCKY

# Table of Contents

Letter from President Lee T. Todd, Jr.	2-3	Private Giving	26
UK Mission and Vision	4	Grant and Contract Awards	27
Enrollment	5-9	Research and Development	28
First-year Student Profile	10-11	University Endowment	29
Retention and Graduation Rates	12-13	Library Collections	30
Degrees Conferred	14-16	Benchmark Institutions	31
Annual Tuition and Fees	17	Administrative Organization	32
Full-time Employees	18-19	Board of Trustees	33
Faculty Statistics	20-22	Administrative History	34
Faculty Salaries	23	UK Values	35
Budgeted Revenue and Expenditures	24-25		

## January 2011

In compliance with KRS 164.250, I am pleased to provide you with the 2010-2011 Fact Booklet, a collection of current facts and statistics about people and programs at the University of Kentucky. Many items in this booklet will be of interest to our stakeholders and the general public, including statistics on enrollments, retention, research expenditures, and faculty salaries. A summary of the 2010-2011 Operating and Capital Budget also is presented.

We are gratified to have recruited one of our most talented classes of freshmen. More than 13,500 students applied for admission to the fall 2010 semester, an 11 percent increase from the previous year and a new University record. The 4,328 new students who arrived on campus in fall 2010 constitute the largest freshman class in UK history. The average ACT Composite score was 25.2, an historical high for first-year students. These well-prepared students earned the highest fall GPA (2.89) ever achieved by a freshman class at UK.

Over 28,000 students now attend the University, a record high enrollment. Other records associated with this year's student body include nearly 2,000 students enrolled in professional practice programs at the doctoral level and over 2,200 students enrolled in doctoral research programs. We are also proud to note that the most international students on record enrolled in our undergraduate programs last fall. At the same time, we are striving to make our workplace more diverse. Record numbers of African American faculty (92) and women in Executive/Administrative/Managerial positions (237) worked at UK in fall 2010.

UK's mission calls upon us to improve people's lives through the excellence of our teaching, research, and service. The current economic crisis facing Kentucky and the nation offers formidable challenges to our institution. But we remain focused on using our formidable intellectual resources to deliver a first class education to our students and pursue solutions to Kentucky's critical social, economic, and health-related problems.

Sincerely,

A handwritten signature in black ink, appearing to read "Lee T. Todd, Jr.", written in a cursive style.

Lee T. Todd, Jr.  
President

## MISSION

The University of Kentucky is a public, land grant university dedicated to improving people's lives through excellence in education, research and creative work, service, and health care. As Kentucky's flagship institution, the University plays a critical leadership role by promoting diversity, inclusion, economic development, and human well-being.

## VISION

The University of Kentucky will be one of the nation's 20 best public research universities.

-- Adopted by the Board of Trustees, June 3, 2005

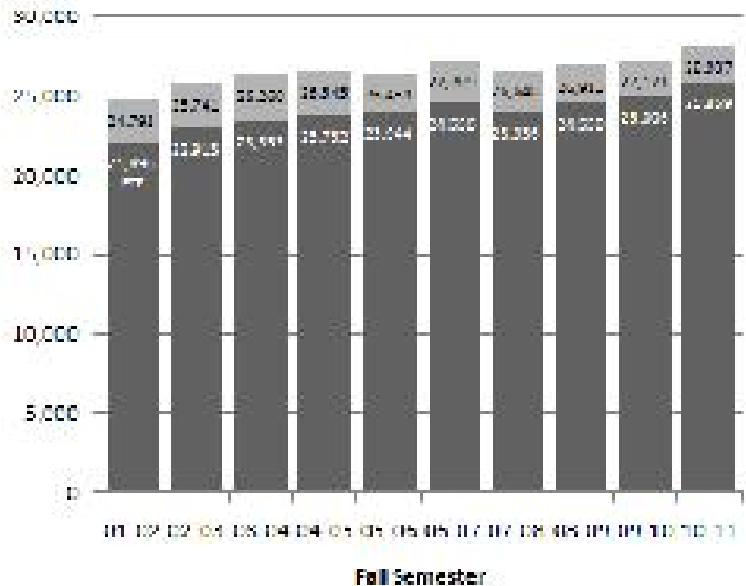
# ENROLLMENT - Headcount and Full-time Equivalent

## Fall 2010 Headcount

Level	Full-time	Part-time	Total
Undergraduate	18,296	1,631	19,927
Graduate*	5,740	1,441	7,181
<b>Subtotal (IPEDS)</b>	<b>24,036</b>	<b>3,072</b>	<b>27,108</b>
UG Auditors	1	60	61
Postdoctoral	309	0	309
House Staff	559	0	559
<b>Total (CPE)</b>	<b>24,905</b>	<b>3,132</b>	<b>28,037</b>

FTE calculations have been revised in accordance with CPE guidelines. The new method uses a formula that weights the number of student credit hours by students' degree level.

\*Note: Beginning in 2005-10, federal reporting guidelines for enrollments eliminated the first-professional degree category and established a new Doctor's Degree - Professional Practice category. These degree programs are now subsumed under the graduate classification.



## ENROLLMENT - Fall 2010 at a Glance

		<b>% of Total</b>
Men	13,780	49.1
Women	14,257	50.9
<b>Total</b>	<b>28,037</b>	<b>100.0</b>

Full-time	24,905	88.8
Part-time	3,132	11.2
<b>Total</b>	<b>28,037</b>	<b>100.0</b>

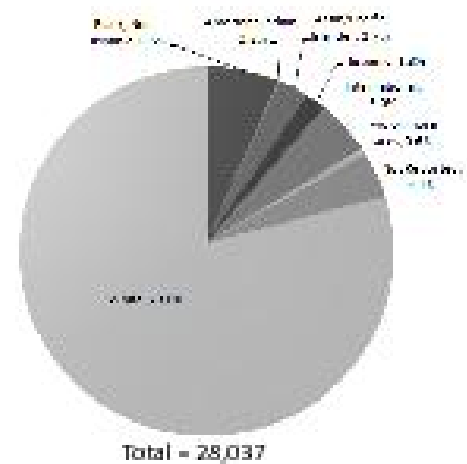
Resident	21,136	75.4
Non-resident	6,901	24.6
<b>Total</b>	<b>28,037</b>	<b>100.0</b>

		<b>% of Total</b>
Freshmen	5,650	20.2
Sophomores	4,262	15.2
Juniors	4,314	15.4
Seniors	5,300	18.9
UG Non-degree	462	1.6
<b>Subtotal Undergraduate</b>	<b>19,988</b>	<b>71.3</b>
Master/Specialist	2,583	9.2
Doctoral*	4,225	15.1
Graduate Non-degree	373	1.3
<b>Subtotal Graduate</b>	<b>7,181</b>	<b>25.6</b>
House Staff/Post Doctoral	868	3.1
<b>Total</b>	<b>28,037</b>	<b>100.0</b>

\*Note: Beginning in 2009-10, federal reporting guidelines for enrollments eliminated the first-professional degree category and established a new Doctor's Degree - Professional Practice category. These degree programs are included under the Doctoral classification.

## ENROLLMENT - Fall 2010 by Race/Ethnicity

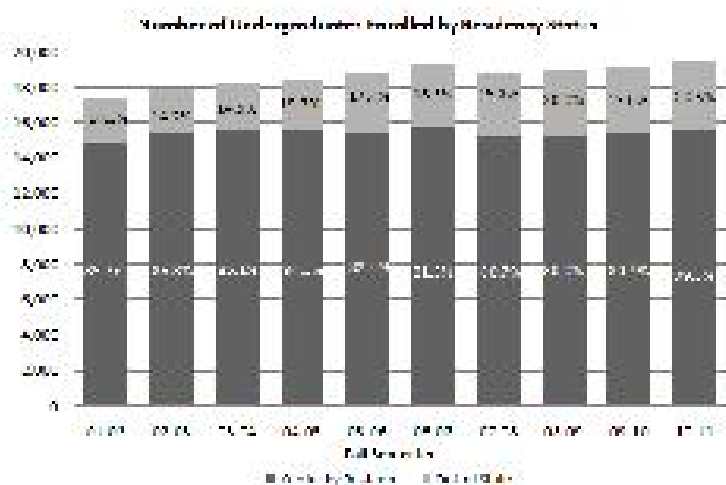
	<u>Undergrad</u>	<u>Grad.</u>	<u>Post</u>	<u>House</u>	
			<u>Doc.</u>	<u>Staff</u>	<u>Total</u>
Black, Non-Hispanic	1,442	361	1	12	1,816
Amer. Indian/ Alaskan Native	37	12	0	3	52
Asian/Pacific Islander	483	194	34	60	771
Hispanic	374	123	3	11	511
International	358	855	174	22	1,409
Not Reported	714	387	19	33	1,153
Two or more races	139	34	0	0	173
White	16,441	5,215	78	418	22,152
<b>Total</b>	<b>19,988</b>	<b>7,181</b>	<b>309</b>	<b>559</b>	<b>28,037</b>





## UNDERGRADUATES - by Residency Status

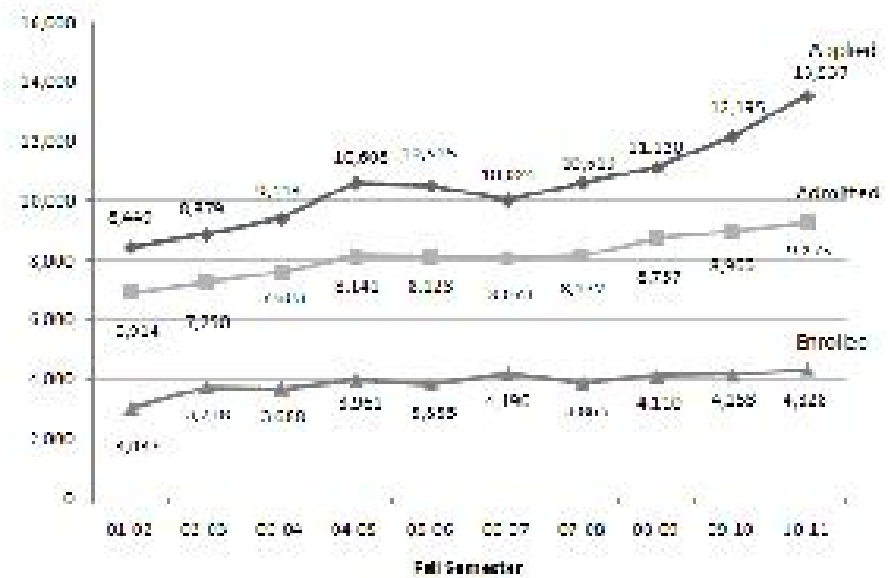
<u>Year</u>	<u>Kentucky Residents</u>	<u>Out-of-State Students</u>
Fall 2010	15,516	4,010
Fall 2009	15,457	3,760
Fall 2008	15,197	3,791
Fall 2007	15,196	3,634
Fall 2006	15,757	3,571
Fall 2005	15,481	3,251
Fall 2004	15,587	2,905
Fall 2003	15,486	2,704
Fall 2002	15,348	2,530
Fall 2001	14,820	2,464



# APPLIED, ADMITTED and ENROLLED

## First-year Students Fall 2010

Applied	13,537
Admitted	9,275
Enrolled	4,328
Admit. Rate	68.5%
Yield Rate	46.7%



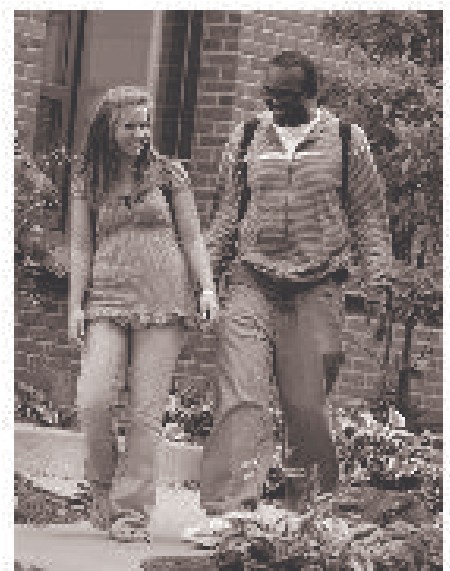
# FIRST-YEAR STUDENT PROFILE

In fall 2009, the University enrolled a record number of African-American and Governor's Scholars/Governor's School for the Arts students.

	2006	2007	2008	2009	2010
Total	4,190	3,865	4,110	4,153	4,328
Female	2,237	2,021	2,099	2,118	2,219
African-American	294	255	347	403	418*
Out-of-State	1,108	1,015	999	897	1,012
International	14	20	32	44	47
Full-Time	4,118	3,837	4,079	4,111	4,282
Governor's Scholars and Governor's School for the Arts	354	348	389	404	371
Merit Scholars	32	28	32	31	33
Valedictorians	122		133	141	147

Note: Valedictorian information was not available for the 2007 cohort.

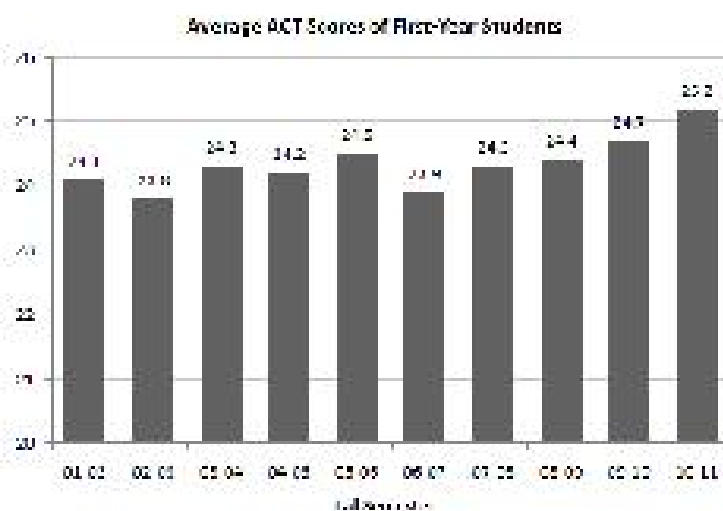
\* This number reflects students who reported two or more races, one of which was "Black or African American".



## ACT Scores - Entering First-year Students

<u>Year</u>	<u>N</u>	<u>Mean</u>	<u>25th/75th Percentile</u>
Fall 2010	4,049	25.2	22/28
Fall 2009	3,906	24.7	22/28
Fall 2008	3,825	24.4	22/27
Fall 2007	3,532	24.3	21/27
Fall 2006	3,864	23.9	21/26
Fall 2005	3,453	24.5	22/27
Fall 2004	3,609	24.2	21/27
Fall 2003	3,385	24.3	22/27
Fall 2002	3,391	23.8	21/26
Fall 2001	2,881	24.1	21/26

Note: Some students submit SAT scores rather than ACT scores. These students' scores are not reflected in the table and graph.

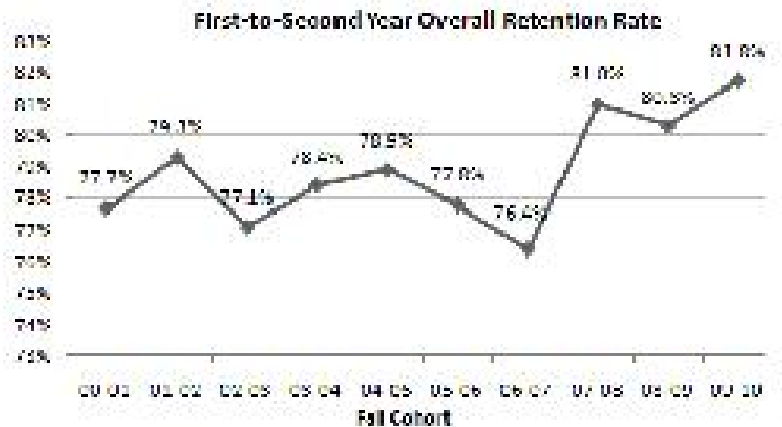


# RETENTION RATE

## First-to-second Year Retention Rate\*

Cohort	Overall	Black, Non-Hispanic		Other
		White	Black, Non-Hispanic	
2009	81.8	83.1	71.2	80.6
2008	80.3	80.5	75.3	84.4
2007	81.0	81.2	80.0	79.5
2006	76.4	76.3	76.6	77.7
2005	77.8	78.0	76.1	76.4
2004	78.9	79.6	69.0	80.5
2003	78.4	78.4	72.8	83.1
2002	77.1	77.3	78.0	71.5
2001	79.3	79.3	77.5	81.1
2000	77.7	77.7	77.7	79.7

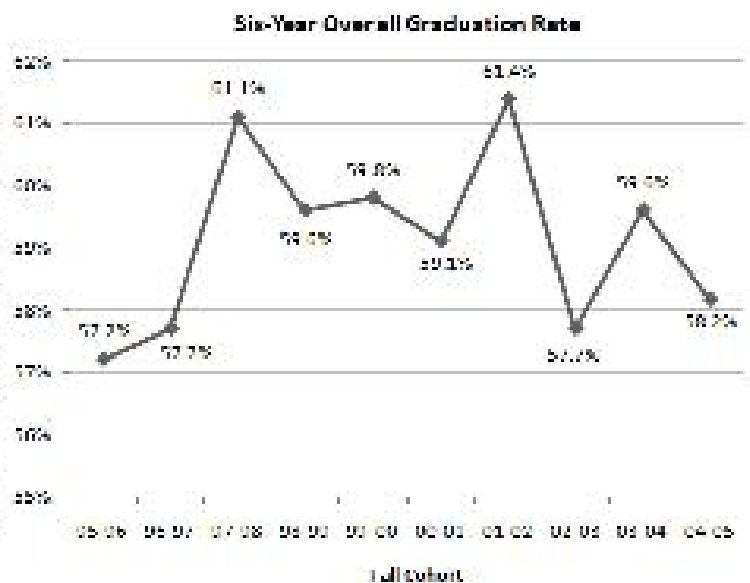
\*Retention rates apply to first-time, full-time, degree-seeking students.



# GRADUATION RATE

## Six-year Graduation Rate\*

Cohort	Overall	Black		Other
		White	Non-Hispanic	
2004	58.2	60.1	38.7	51.5
2003	59.6	60.5	42.9	62.8
2002	57.7	58.6	47.6	51.1
2001**	61.4	62.5	50.3	49.6
2000	59.1	60.6	45.0	50.5
1999	59.8	60.8	46.2	57.1
1998	59.6	60.2	49.7	61.4
1997	61.1	62.2	49.0	59.4
1996	57.7	59.1	43.2	53.9
1995	57.2	58.2	38.5	63.2



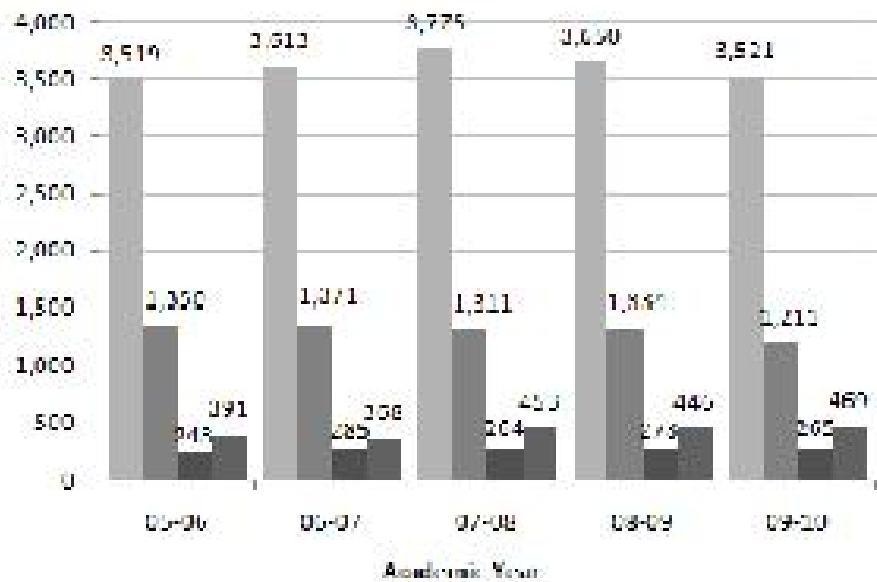
\*Graduation rates apply to first-time, full-time, degree-seeking students.

\*\*Reflects a correction made after IPEDS submission.

# DEGREES CONFERRED

## 2009-2010

Baccalaureate	3,521
Master's/Specialist's	1,211
Doctor's Degree:	
Research/Scholarship	265
Professional Practice	469



## DEGREES CONFERRED - By College

### 2009-2010

<u>College</u>	<u>Bacc.</u>	<u>Mast.*</u>	<u>Doc.**</u>
Agriculture	484	56	29
Arts & Sciences	1,063	112	75
Business & Economics	584	196	14
Comm. & Info. Studies	340	94	11
Dentistry	-	6	51
Design	32	48	-
Education	302	191	39
Engineering	327	99	23
Fine Arts	127	23	12

<u>College</u>	<u>Bacc.</u>	<u>Mast.*</u>	<u>Doc.**</u>
Grad. School	-	60	8
Health Sciences	53	105	58
Law	-	-	121
Medicine	-	10	130
Nursing	152	52	17
Pharmacy	-	-	139
Public Health	-	43	6
Social Work	57	116	1
<b>Total</b>	<b>3,521</b>	<b>1,211</b>	<b>734</b>

\* Includes Specialist degrees

\*\* Includes Doctor's Degrees (Research/Scholarship) and Doctor's Degrees (Professional Practice)

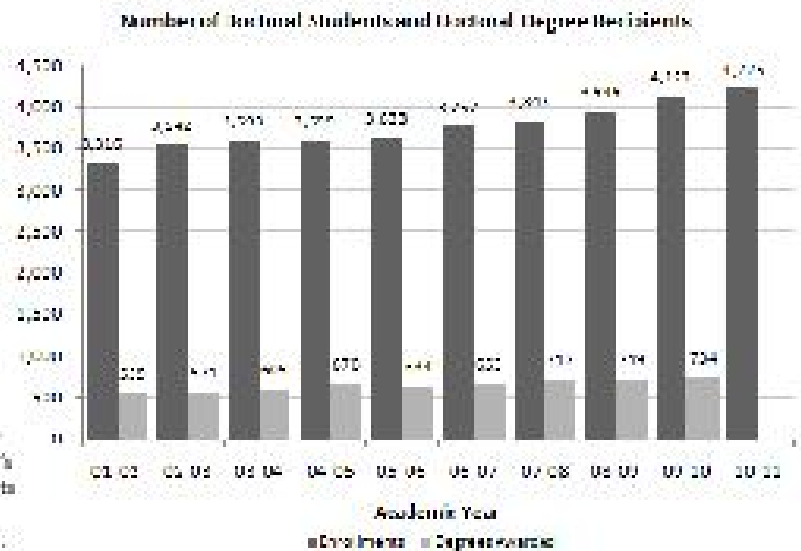


## DOCTORATES - Enrollments and Degrees Awarded

Year	Fall Enrollment	Degrees Awarded
2010-11	4,225	
2009-10	4,122	734
2008-09	3,949	719
2007-08	3,843	717
2006-07	3,757	653
2005-06	3,633	634
2004-05	3,599	670
2003-04	3,593	605
2002-03	3,542	571
2001-02	3,316	559

Note1: Federal reporting guidelines have eliminated the first-professional degree category and established a new Doctor's Degree - Professional Practice category. Doctoral enrollments and degree recipients have been revised to include enrollments and degrees from former first-professional programs.

Note2: Enrollments are based on the fall semester of a given academic year. The number of degree recipients for 2010-11 is not yet available.

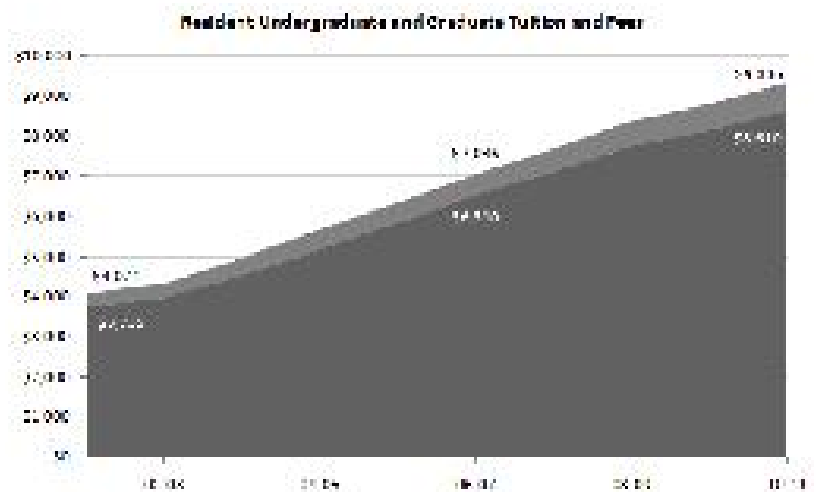


# ANNUAL TUITION and FEES

## 2010-2011

<u>Resident</u>	<u>Tuition</u>	<u>Fees</u>
Graduate	\$ 8,352	\$ 954
Undergraduate		
- Lower Division	7,656	954
- Upper Division	7,905	954
<u>Non-resident</u>	<u>Tuition</u>	<u>Fees</u>
Graduate	\$ 18,220	\$ 954
Undergraduate		
- Lower Division	16,724	954
- Upper Division	16,960	954

Note: Beginning in 2004-05, undergraduates in upper and lower divisions are charged different rates of tuition. The tuition rate in the graph reflects the rate for lower division students.



Academic Year

# FULL-TIME EMPLOYEES

**2009-2010**

Full-Time Employees	President's Office	Provost			Health Affairs	Total	% Total
		Educational Units	Administration/Support	Finance and Administration			
Exec./Admin./Managerial	36	174	106	83	107	506	4.2%
Faculty	0	2,100	0	0	0	2,100	17.4%
Library Faculty	0	65	0	0	0	65	0.5%
Other Professional	197	1,751	501	330	1,163	3,942	32.6%
Secretarial/Clerical	78	1,313	321	193	573	2,478	20.5%
Tech./Paraprofessional	23	911	109	156	332	1,531	12.7%
Skilled Crafts	6	29	6	149	0	190	1.6%
Service/Maintenance	11	211	134	649	279	1,284	10.6%
<b>Total</b>	<b>351</b>	<b>6,554</b>	<b>1,177</b>	<b>1,560</b>	<b>2,454</b>	<b>12,096</b>	<b>100.0%</b>

Note 1: Percentages may not total properly due to rounding.

Note 2: The President's Office includes staff from the Athletics Department and the Offices of the General Counsel, Institutional Advancement, and Commercialization and Economic Development.

Note 3: Starting in 2009-07, library faculty are reported to the federal government in the other professional category. For this publication, library faculty are classified separately.

# FULL-TIME EMPLOYEE DEMOGRAPHICS

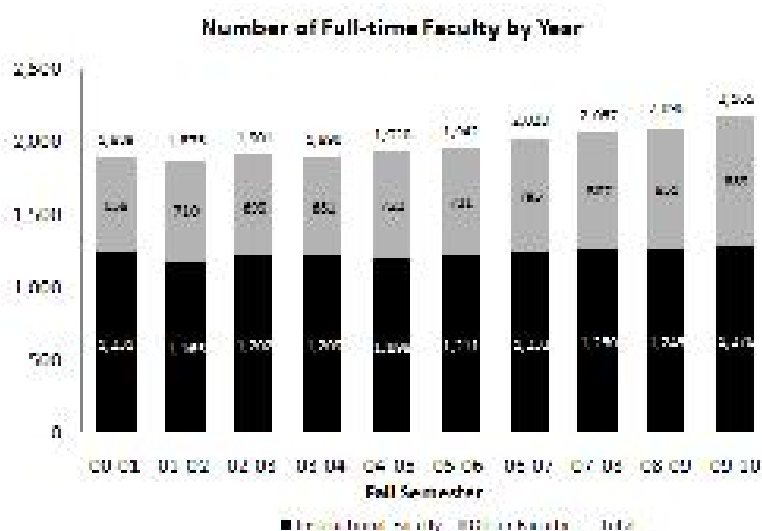
**2009-2010**

<b>Full-time Employees</b>	<b>Black, Non-Hispanic</b>	<b>American Indian/ Alaskan Native</b>	<b>Asian/ Pacific Islander</b>	<b>Hispanic</b>	<b>White</b>	<b>Multi- racial</b>	<b>Female</b>	<b>Male</b>
Exec./Admin./Managerial	21	1	12	4	468	0	236	270
Faculty	86	1	256	33	1,724	0	732	1368
Library Faculty	3	0	1	0	61	0	48	17
Other Professional	163	2	201	30	3,545	1	2503	1439
Secretarial/Clerical	309	1	24	9	2,135	0	2202	276
Tech./Paraprofessional	130	2	70	19	1,310	0	925	606
Skilled Crafts	23	0	3	0	164	0	4	186
Service/Maintenance	411	2	19	8	844	0	522	762
<b>Total</b>	<b>1,146</b>	<b>9</b>	<b>586</b>	<b>103</b>	<b>10,251</b>	<b>1</b>	<b>7,172</b>	<b>4,924</b>

## FULL-TIME FACULTY - Historical Trends

	Instructional Faculty	Other Faculty
2009-2010	1,276	889
2008-2009	1,245	851
2007-2008	1,250	807
2006-2007	1,233	795
2005-2006	1,211	731
2004-2005	1,198	722
2003-2004	1,209	681
2002-2003	1,202	699
2001-2002*	1,165	710
2000-2001	1,231	658

Note: Beginning in 2001-2002, changes in the federal definition of 'Instructional Faculty' excluded 'Extension Faculty,' however, Lecturers are now included. 'Other Faculty' now includes those with Extension, Clinical, Research and Library Faculty series designations.



# FACULTY DEMOGRAPHICS

## Tenured and Tenure-track Faculty 2009-2010

	Black, Non-Hispanic		American Indian/ Alaskan Native		Asian/ Pac. Islander		Hispanic		White	
	M	F	M	F	M	F	M	F	M	F
Full-Time Faculty										
Professors/Lib. I	4	5	0	0	53	8	4	2	463	120
Associate Professors/Lib. II	22	12	1	0	35	13	2	2	285	177
Assistant Professors/Lib. III	13	15	0	0	42	25	2	9	178	121
Instructors/Lib. IV	0	2	0	0	0	0	0	0	5	3
<b>Total</b>	<b>39</b>	<b>34</b>	<b>1</b>	<b>0</b>	<b>130</b>	<b>46</b>	<b>8</b>	<b>13</b>	<b>931</b>	<b>421</b>

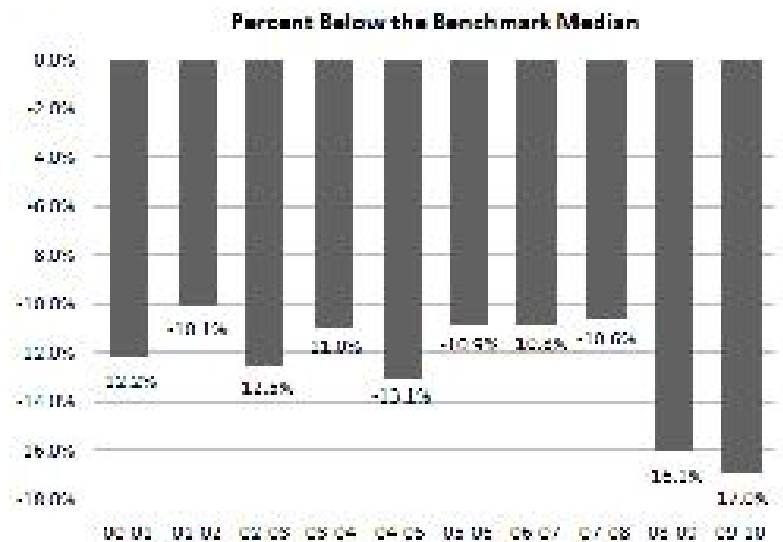
## FACULTY - By Rank and Title Series: 2009-2010

<b>Rank</b>	<b>Tenured/Tenure Track</b>				<b>Total</b>
	<b>Regular</b>	<b>Librarian</b>	<b>Extension</b>	<b>Spec. Title</b>	
Professors/Lib. I	531	22	38	68	659
Associate Professors/Lib. II	368	30	19	132	549
Assistant Professors/Lib. III	314	5	15	71	405
Instructors/Lib. IV	1	8		1	10
<b>Total</b>	<b>1,214</b>	<b>65</b>	<b>72</b>	<b>272</b>	<b>1,623</b>

<b>Rank</b>	<b>Non-tenure Track</b>				<b>Total</b>
	<b>Clinical</b>	<b>Research</b>	<b>Lecturer</b>	<b>Other</b>	
Professors	18	4		6	28
Associate Professors	57	12		2	71
Assistant Professors	195	76		5	276
Instructors	29			21	50
Senior Lecturers			19		19
Lecturers			98		98
<b>Total</b>	<b>299</b>	<b>92</b>	<b>117</b>	<b>34</b>	<b>542</b>

# FACULTY SALARIES

Fall	All-ranks Average Salary	Benchmark Median Salary
2009	\$ 81,189	\$ 97,833
2008*	80,813	96,312
2007	79,350	88,787
2006	76,065	85,300
2005	73,685	82,664
2004	71,026	81,713
2003	69,911	78,594
2002	66,953	76,547
2001	66,713	74,184
2000	64,842	73,892

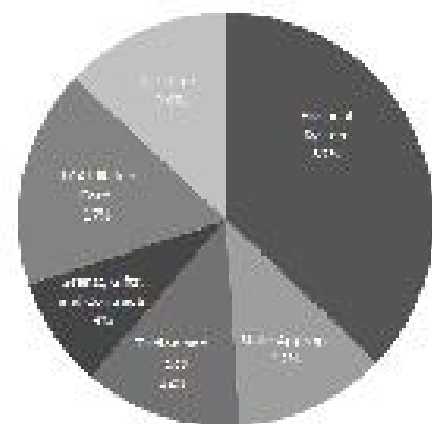


\*Note: Beginning in 2008-09, the Top 20 Business Plan benchmark institutions replaced the 15 CPE benchmark institutions in salary comparisons.



## REVENUE (In Millions)

Source of Funds	Revised Budget	Budget
	2009-10	2010-11
State Appropriations	\$294.1	\$290.7
Student Tuition and Fees	285.2	303.6
County Appropriations	15.8	17.0
Endowment and Investment Income	33.7	30.2
Federal Appropriations	17.4	17.7
Gifts, Grants and Contracts	209.5	214.8
Sales and Services	34.3	23.3
Hospital Services	916.4	917.8
Auxiliary Enterprises	57.7	62.2
UK Affiliated Corporations	402.0	422.1
Appropriated Fund Balances - University	164.5	169.7
<b>Total</b>	<b>\$2,430.6</b>	<b>\$2,469.1</b>



2010-2011 Budget

## EXPENDITURES (In Millions)

<b>Program</b>	<b>Revised Budget</b>		<b>Budget</b>	
	<b>2009-10</b>		<b>2010-11</b>	
Instruction	\$332.8		\$340.3	
Research	287.0		289.5	
Public Service	304.5		315.3	
Libraries	25.9		25.3	
Academic Support	94.6		98.2	
Student Services	33.0		33.2	
Institutional Support	116.1		109.6	
Operations and Maintenance	63.0		66.2	
Student Financial Aid	97.4		106.5	
Auxiliary Enterprises	130.2		145.5	
Hospital Services	884.5		867.7	
Mandatory Transfers	61.6		71.8	
<b>Total</b>	<b>\$ 2,430.6</b>		<b>\$ 2,469.1</b>	

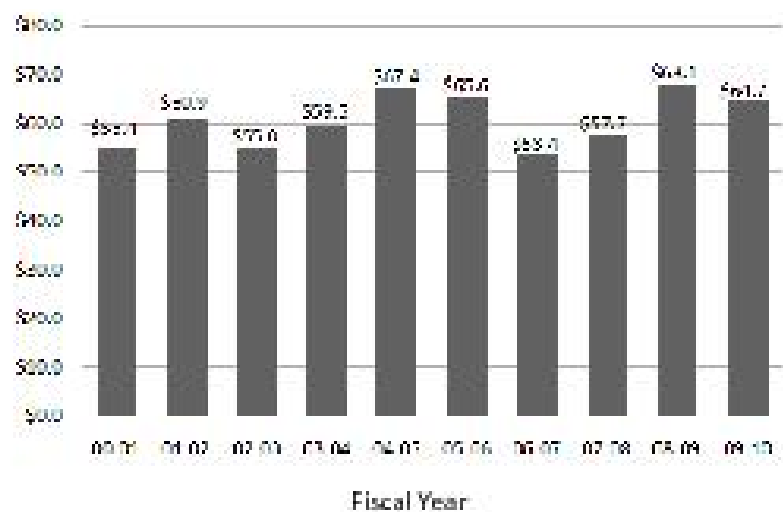
<b>Category</b>	<b>Revised Budget</b>		<b>Budget</b>	
	<b>2009-10</b>		<b>2010-11</b>	
Personnel Services	\$ 1,110.2		\$ 1,163.5	
Operating Expenses	1,096.5		1,171.2	
Capital Outlay	162.3		62.6	
Mandatory Transfers	61.6		71.8	
<b>Total</b>	<b>\$ 2,430.6</b>		<b>\$ 2,469.1</b>	

## PRIVATE GIVING (In Millions)

### Fiscal Year 2009-2010

Alumni	\$ 17.7
Non-alumni	13.9
Corporations	14.5
Foundations	12.0
Trusts/Associations	6.6
<b>Total</b>	<b>\$ 64.7</b>

Note: With the transfer of LCC to the KCTCS in 2003-04 FY, gifts to LCC stopped being reflected in UK's Private Giving statistics.



## GRANT and CONTRACT AWARDS (In Millions)

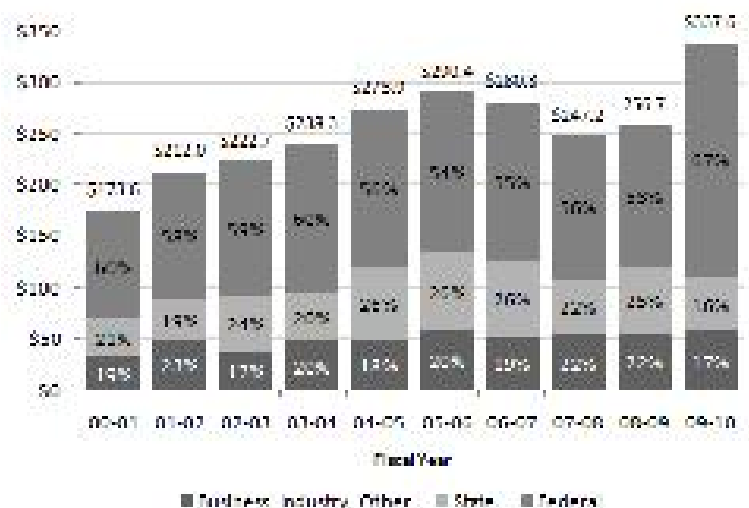
### 2009-2010

#### By Category of Support

Instruction	\$ 17.8
Research	245.5
Public Service	61.6
Other	12.8
<b>Total</b>	<b>\$ 337.6</b>

#### By Source

Federal	67%
State	16%
Business, Industry, Other	17%



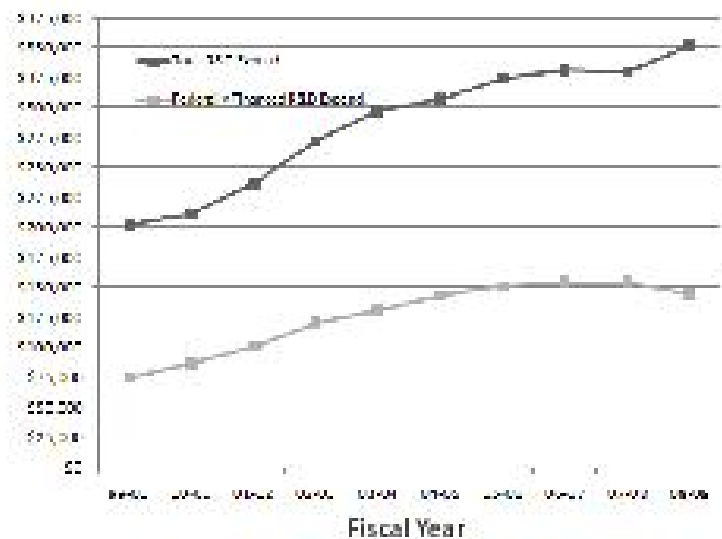
Note: With the transfer of LCC to the RCTCS in 2008-04 FY awards to LCC stopped being reflected in UK's Grant and Contract Awards statistics.

## RESEARCH and DEVELOPMENT (In Thousands)

Fiscal Year	Total R&D Expenditures*	Federally Financed R&D Expenditures*
2009	\$ 351,943	\$ 144,221
2008	329,354	154,260
2007	331,606	154,688
2006	323,958	151,238
2005	306,653	142,794
2004	297,610	129,887
2003	272,062	120,003
2002	236,275	100,426
2001	211,721	86,239
2000	202,392	73,858

\*As reported to the National Science Foundation for science and engineering disciplines; expenditures for FY 2009 have been revised.

Research and Development Expenditures

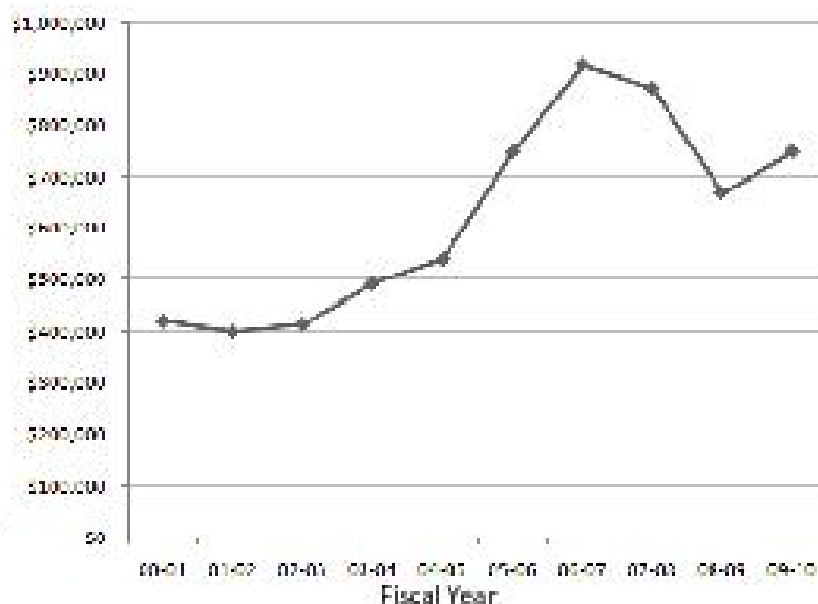


# UNIVERSITY ENDOWMENT (In Thousands)

<u>Fiscal Year</u>	<u>Market Value</u>
2010	\$ 748,676
2009	668,008
2008	871,861
2007	916,590
2006	746,114
2005	538,384
2004	491,098
2003	414,328
2002	399,030
2001	420,838

Note: In 2006, the Chandler Medical Center University Hospital Quasi-Endowment Fund for \$150 million was established, accounting for the large increase over the 2005 total.

Market Value of University Endowment



## LIBRARY COLLECTIONS

	<u>2007-2008</u>	<u>2008-2009</u>	<u>2009-2010</u>
Volumes Held	3,719,548	3,784,382	3,915,579
Current Periodical Titles	73,251	78,194	87,287
Mirciforms	6,471,766	6,506,097	6,555,102
Audio-visual Materials	93,878	96,717	99,373

UK Libraries' collections also include access to a approximately 400 licensed networked electronic databases, over 55,000 electronic journals and over 500,000 electronic books accessible in the University's 12 libraries and also available to faculty and students off campus via a proxy server. In addition, the collections include: over 260,000 maps; over 200 current state, national and international newspapers; nearly 8,000 interviews in the Louis B. Nunn Center for Oral History; the University Archives and Records Program; the Wendell H. Ford Public Policy Research Center; the Audio-Visual Archives; the Bert T. Combs Appalachian Collection; the Public Policy Archives; the Rare Book Collection which includes the W. Hugh Peal Collection of 19th century English and related literature; and the Preservation Reformatting Center. The Center for Digital Programs creates digital content for the Kentuckiana Digital Library including electronic texts, digitized photographs, images and archival finding aids. UK Libraries is a regional depository for U.S. government publications, and also a depository for Canadian government publications and European Union publications. British Parliamentary Papers, Kentucky government publications, and technical reports from federal agencies are all selectively collected.



\*Note: ARL changed the way that periodicals are counted.

## TOP 20 BUSINESS PLAN BENCHMARK INSTITUTIONS

Georgia Institute of Technology

Ohio State University

Pennsylvania State University

Rutgers University - New Brunswick

Texas A & M University

The University of Texas at Austin

University of California - Berkeley

University of California - Davis

University of California - Los Angeles

University of California - San Diego

University of Florida

University of Illinois at Urbana - Champaign

University of Maryland - College Park

University of Michigan - Ann Arbor

University of Minnesota - Twin Cities

University of North Carolina at Chapel Hill

University of Pittsburgh - Pittsburgh Campus

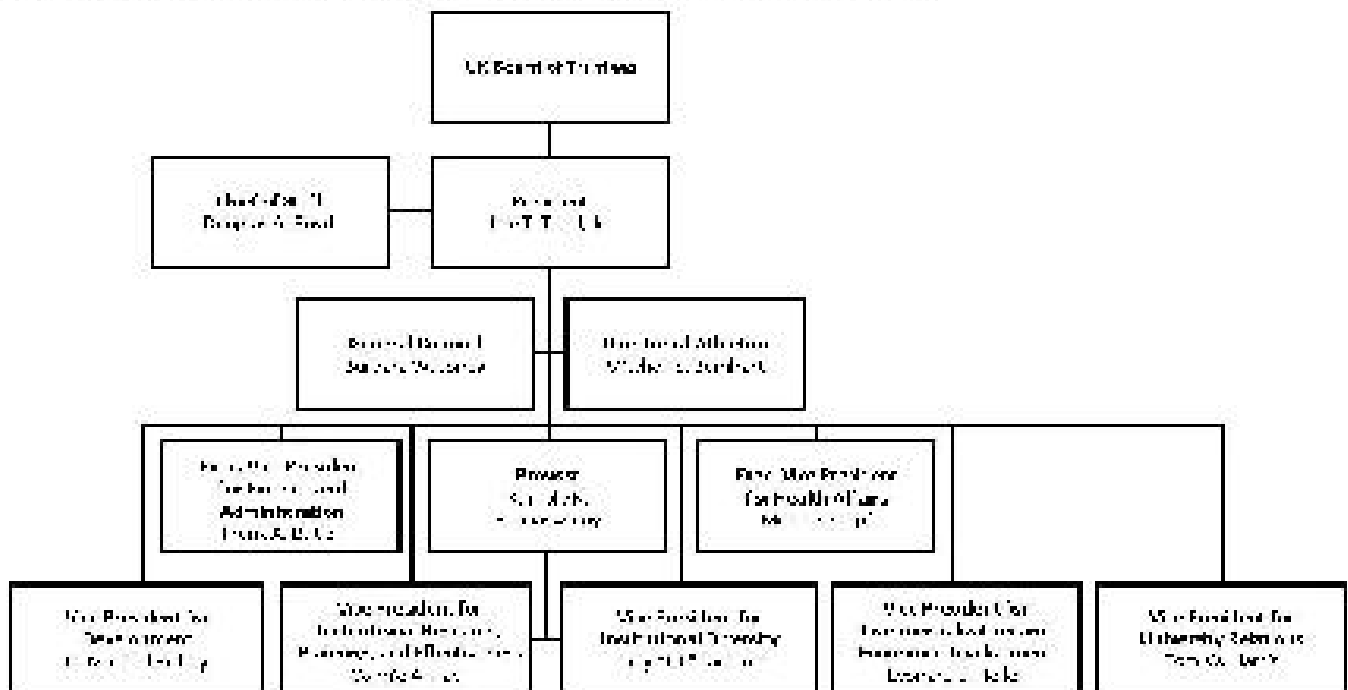
University of Virginia

University of Washington - Seattle Campus

University of Wisconsin - Madison



# ADMINISTRATIVE ORGANIZATION



## BOARD of TRUSTEES

<b>Edward Britt Brockman</b>	Louisville	(2014)	<b>Billy Joe Miles</b>	Owensboro	(2013)
<b>Sheila Brothers</b>	Staff Member	(2013)	<b>Terry Mobley</b>	Lexington	(2016)
<b>Penelope A. Brown</b>	Corbin	(2011)	<b>Sandy Patterson</b>	Alumni Member	(2012)
<b>Jo Hern Curris</b>	Alumni Member	(2014)	<b>Joe Peek</b>	Faculty Member	(2013)
<b>Dermontti Dawson</b>	Nicholasville	(2011)	<b>Erwin Roberts</b>	Louisville	(2012)
<b>William Stamps Farish, Jr.</b>	Versailles	(2016)	<b>Charles R. Sachatello</b>	Lexington	(2013)
<b>Oliver Keith Gannon</b>	Mt. Sterling	(2016)	<b>C. Frank Shoop</b>	Lexington	(2014)
<b>Carol Martin "Bill" Gatton</b>	Tennessee	(2015)	<b>Ryan Smith</b>	Student Member	(2011)
<b>Pamela T. May</b>	Pikeville	(2013)	<b>James W. Stuckert</b>	Prospect	(2015)
<b>Everett McCorvey</b>	Faculty Member	(2011)	<b>Barbara Young</b>	Lexington	(2015)

# ADMINISTRATIVE HISTORY

- 1865** Agricultural and Mechanical College (A&M) established as part of Kentucky University
- 1869** James K. Polkton became President of A&M
- 1878** A&M separated from Kentucky University
- 1882** A&M moved to current location in Lexington
- 1885** Ag. Experiment Station opened
- 1889** College of Agriculture established
- 1908** College of Arts and Sciences and College of Law established; A&M name changed to "State University, Lexington, Kentucky"
- 1909** University Library established
- 1911** Henry S. Barker became President of State University
- 1916** State University renamed University of Kentucky
- 1917** Frank L. McVey became President of UK; Graduate School established
- 1918** College of Engineering established
- 1923** College of Education established
- 1925** College of Business and Economics established
- 1941** Herman L. Danavon became President
- 1947** College of Pharmacy moved to UK
- 1956** Frank G. Dickey became President
- 1957** Ashland Extension Center established
- 1960** Medical Center established; College of Medicine admitted first class; College of Nursing admitted first class; Henderson Extension Center and Southeast Extension Center established
- 1962** College of Dentistry admitted first class; University Hospital opened
- 1963** John W. Oswald became President
- 1964** Community College System established under UK; College of Architecture established
- 1965** Lexington Technical Institute (LTI) established
- 1966** College of Allied Health Professions established
- 1967** College of Home Economics established
- 1968** Albert D. Kirwan became President
- 1969** College of Social Work established; Otis A. Singletary became President
- 1970** College of Library and Information Science established
- 1976** College of Communications and College of Fine Arts established
- 1982** University reorganized with a Central Administration and three sectors headed by Chancellors (Lexington Campus, Medical Center, and Community College System)
- 1984** LTI became Lexington Community College
- 1987** David P. Roselle became President
- 1990** Charles T. Withington, Jr. became President
- 1993** College of Communications and Information Studies established
- 1998** William T. Young Library opened; All Community Colleges (except LOC) transferred to the KCTCS
- 2001** Lee T. Todd, Jr. became President; University reorganized with a Provost model
- 2002** College of Design established
- 2004** LOC transferred to the KCTCS; College of Public Health established

# VALUES

The values of the University guide its decisions and the behavior of its community. Its core values are:

- *Integrity*
- *Excellence*
- *Mutual Respect and Human Dignity*
- *Diversity and Inclusion*
- *Academic Freedom*
- *Shared Governance*
- *Work-life Sensitivity*
- *Civic Engagement*
- *Social Responsibility*

-- Adopted by the Board of Trustees, June 9, 2009

