

AT PARKS FERRY
Located 7 1/2 Miles N.E. of Carlisle

North Fork of Licking River

WASHINGTON M'G & MINING CO.
PLANING MILL, SASH, DOOR & BLIND FACTORY

RIGHT WATCHMAN - INCHES CLOCK-STATION
LOCATION (AT SAW MILL) NO LIGHTS, NO
STONE IN OFFICE. FUEL, RETISE, 250' H' RISE
100' NEAR WIDE BRIDGE, 2' INK TO MILL
SUPPLIED BY 750 GAL. TANK ON HILL 100'
RIVER. THREE MILLS. POSITIVE AMOUNT OF
LUMBER ON HANDS 1,500,000 FT. SQUARE
LEVEL.

KEY

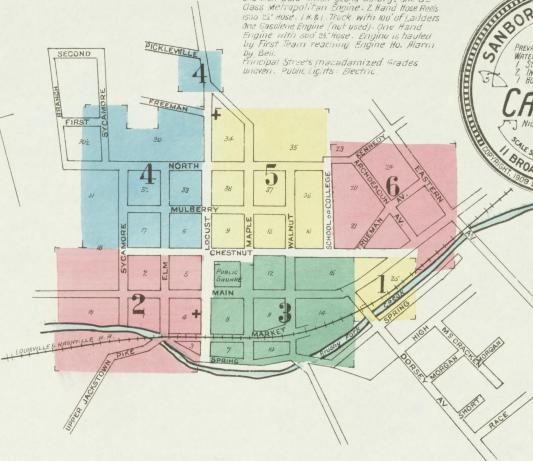
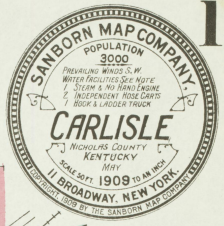
CONCRETE WALLS OR ROOF
METAL CORNER
WOOD WALLS OR ROOF
FRAME PARTITION
CHIMNEY WITH IRON DOOR
IRON DOOR
WOODS & IRON SHUTTERS
WINDOW 10' STORY
WINDOWS & STONES
2" STAIRS

STAIRS
BUILDINGS COLORED YELLOW AND FRAME
RED
BRICK
SAND
IRON
GREEN
SHEDS

① ② INDICATE RELATIVE HEIGHTS
③ FIRE STATION AS SHOWN ON KEY MAP
ALTERNATE STREET NUMBERS ARE ACTUAL
CONSECUTIVE STREETS ARE ARBITRARY

WATER FACILITIES: Not good - Private
Wells 8 in 17th century
FIRE DEPARTMENT: Semi paid, One Chief
& 10 Men paid, 200 gal. Salvo, One 35'
Cass. Metropolitan Steam Engine, 2 Hand Pumps
also 55' hose, 1 M. E. Truck with 100' of ladders
One Gasoline Engine, 700 wds., One Hand
Engine, 100 wds. & 25' hose, Engine is hauled
by First Train reaching Engine Ho. Works
by Day.

Principal Streets mechanized grades
water. Main lights - street.



INDEX.

STREETS.	NUMBER	LOCUS.	L	P	SPECIALS.	NUMBER	L	NUMBER
Archibald Ave.	6	Locust	16-36	Pickleville	Archibald & Sons Carriage Shop	3	L. & N. R. Depots	3
Ash Alley	2	"	37-45	"	Baptist Church	5	Meth. Episc. Church	5
"	4	"	45-51	Rich Alley	Baxter, D., Tobacco Warehouse	3	(Negro)	4
"	6	"	59-57	School	Blue Grass Produce Co.	3	Post Office	2
Chestnut	12-24	3	401-418	Short Alley	Booth, F. D., Tobacco Warehouse	3	Potts Hotel	3
"	26-36	5	25-49	Spring	Carroll, J. C., Milling Co.	3	Presbyterian Church	3
"	38-46	6	50-68	"	Carlisle Elec. Light and Power Co.	2	Public School	6
"	48-56	6	62-72	"	Christian Church (Negro)	2	Ratliff Bros. Grocery Warehouse	3
"	58-66	6	73-83	"	County Court House	2	Lumber	3
College	15-20	6	227-234	Sugar Tree Alley	Dorsey Bros. & Fisher, Lumber	3	Lumber	3
"	15-20	6	235-244	Sycamore	Coal & S. Jr., Tobacco W.H.	3	Wholesale Grocers	3
"	15-20	6	245-254	"	Dusley, W. S., Jr., Tobacco W.H.	3	St. John's Catholic Church	6
Day Alley	6	6	191-224	Truman Ave.	Fire Department	2	Standard Oil Co.	4
Dorsey Ave.	201-215	1	19-25	Upper Jacktown Pike	Hotel Conley	3	Taylor, F. C., Tobacco Warehouse	6
"	near Main	3	26-32	Walnut	Jail	2	Templeman, R. R., Horse Head	3
"	near Main	3	33-39	"	Kimbroough House	3	M'G and Corn Barr.	3
Eastern Ave.	1-26	2	40-46	North	"	3	Washington M'G & Mining Co.	1
Elm	14-29	4	47-51	"	"	3	"	"
"	301-311	4	52-59	"	"	3	"	"
Freeman	4	4	201-204	"	"	3	"	"
"	4	4	205-214	"	"	3	"	"
Kennedy	K	6	101-121	"	"	3	"	"

NOTE - House Numbers given are arbitrary.

North Fork of Licking River

AT PARKS FERRY
Located 7 1/2 Miles N.E. of Carlisle

WASHINGTON M'G & MINING CO.
SAW MILL
FOR REPORT SEE PLANING MILL ABOVE

DORSEY

SPRING

3

14

25

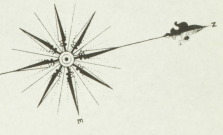
15

6

6

Scale of Feet

NO EXPOSURE

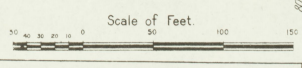


CHARLISLE ELECTRIC
LIGHT & POWER CO.
No Heat - No Fire App.

F.C. TAYLOR OWNER
Vehicle No. 25

Storage
Wagon Shop
Bldg.
Garage

CHRISTIAN CHURCH
Bible School
Lectures



2

LOCUST

8

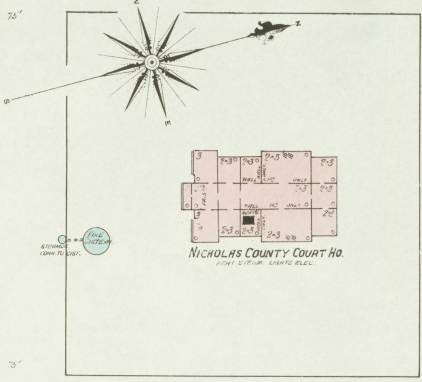
MAPLE

11

WALNUT

14

1

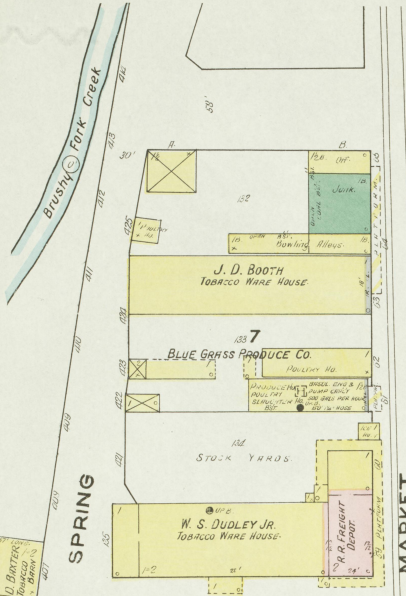


5

CHESTNUT

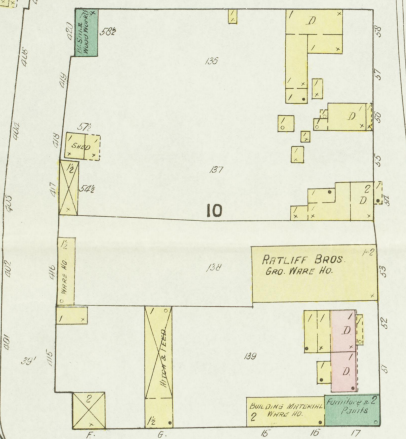
6

SCHOOL OR COLLEGE ST.
TRUEMAN AV.



SPRING

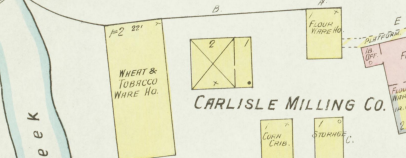
MARKET



10

HOTEL CONLEY

SUGAR TREE

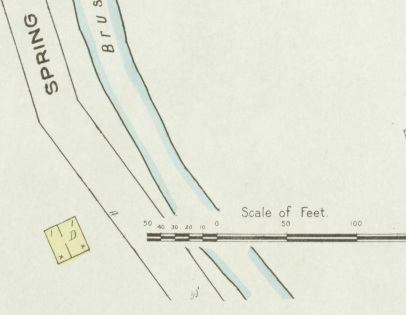
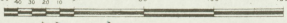


CARLISLE MILLING CO.

DORSEY BROS. & FISHER
LUMBER, COAL, ETC.

ROLLER MILLS
NO. 1 WOODEN ROLLER 8' x 40'
NO. 2 STEEL ROLLER 8' x 40'
NO. 3 STEEL ROLLER 8' x 40'
NO. 4 STEEL ROLLER 8' x 40'
NO. 5 STEEL ROLLER 8' x 40'
NO. 6 STEEL ROLLER 8' x 40'
NO. 7 STEEL ROLLER 8' x 40'
NO. 8 STEEL ROLLER 8' x 40'
NO. 9 STEEL ROLLER 8' x 40'
NO. 10 STEEL ROLLER 8' x 40'
NO. 11 STEEL ROLLER 8' x 40'
NO. 12 STEEL ROLLER 8' x 40'
NO. 13 STEEL ROLLER 8' x 40'
NO. 14 STEEL ROLLER 8' x 40'
NO. 15 STEEL ROLLER 8' x 40'
NO. 16 STEEL ROLLER 8' x 40'
NO. 17 STEEL ROLLER 8' x 40'
NO. 18 STEEL ROLLER 8' x 40'
NO. 19 STEEL ROLLER 8' x 40'
NO. 20 STEEL ROLLER 8' x 40'

Scale of Feet.

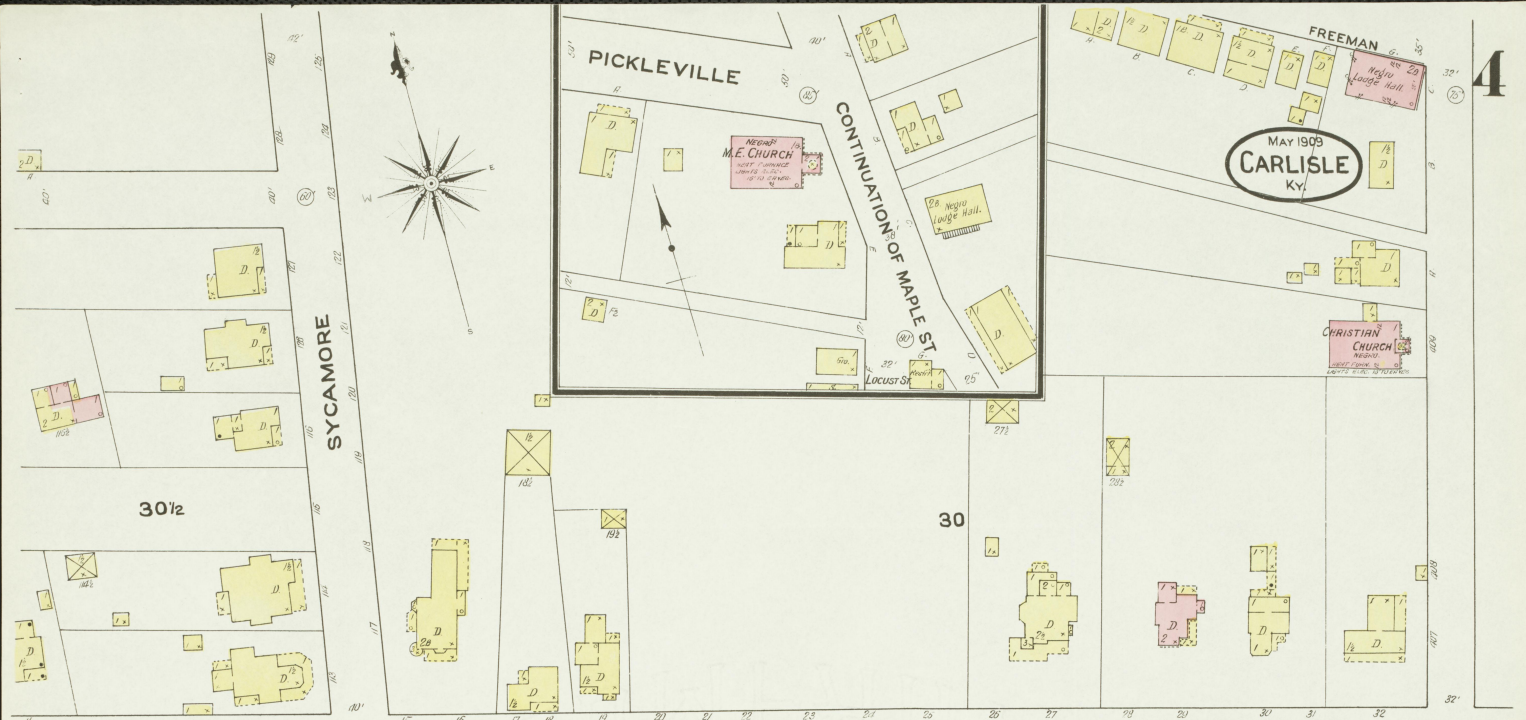


SPRING

Brushy Fork Creek

DORSEY AV.

BRUSHY FORK CREEK



NORTH





SCHOOL OR COLLEGE

PUBLIC SCHOOL
PERMITS NOT GRANTED, ELEC.
WIRE WORKS OBTAINED
FROM
AUGUST 1908

MAY 1909
CARLISLE
Ky.

23

CHESTNUT

KENNEDY

TRUEMAN

AV.

ARCHDEACON

24

AV.

EASTERN

24

MAIN

25

St. John's
Ev. Church
W. C. COUCH
Pastor
W. C. COUCH
Pastor

34

Brushy Fork
Creek

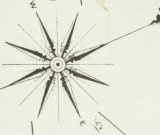
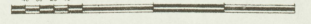
BARNSVILLE BRANCH

SPRING

F. C. TRYER
TOBACCO WARE HO.

C. C. PRITTF
TOBACCO WARE HO.

Scale of Feet.



1

