

OFFICIAL
PROGRAM

25c



STOLL FIELD

8 P. M.

SATURDAY OCT. 15

1949

KENTUCKY VS.
THE CITADEL

Here's the Signal for
Perfect Smoking Pleasure!
NO CIGARETTE HANGOVER
when you smoke
PHILIP MORRIS
Because **PHILIP MORRIS** is definitely less irritating than any other leading brand!
© 1949 Philip Morris & Co.

1 OFF-SIDE

2 ILLEGAL POSITION or PROCEDURE

3 ILLEGAL MOTION or SHIFT

4 DELAY of GAME

5 PERSONAL FOUL

6 CLIPPING

7 ROUGHING KICKER

8 UNSPORTSMANLIKE CONDUCT

9 HOLDING by DEFENSE

10 ILLEGAL USE of HANDS and ARMS

11 INTENTIONAL GROUNDING

12 ILLEGALLY PASSING or HANDING BALL FORWARD

13 FORWARD PASS or FAIR CATCH INTERFERENCE

14 INELIGIBLE RECEIVER DOWN FIELD on PASS

15 BALL ILLEGALLY TOUCHED, KICKED or BATTED

16 INCOMPLETE FORWARD PASS; PENALTY DECLINED; NO PLAY or NO SCORE

17 CRAWLING; HELPING the RUNNER or INTERLOCKED INTERFERENCE

18 TOUCHDOWN or FIELD GOAL

19 SAFETY

20 TIME-OUT

Yes! You'll be glad tomorrow ... you smoked **PHILIP MORRIS** today!

ESTABLISHED — OVER 100 YEARS
PHILIP MORRIS & CO. LTD.
INC.
FINEST SELECTION
SPECIAL BLEND
MADE IN U.S.A.
BY PHILIP MORRIS & CO. LTD., INC. NEW YORK

KENTUCKY *(Wildcats)*

VS.

THE CITADEL *(Bulldogs)*

Stoll Field

October 15, 1949



CONTENTS

Official Signals	Inside Cover
Hon. Earle C. Clements, Governor of Kentucky	2
Dr. H. L. Donovan, President, University of Ky.	2
Bernie A. Shively, Athletic Director	3
Paul Bryant, Head Football Coach	3
Coaching Staff, University of Ky.	4
The Bryant Story	4
Coaching Staff Notes	5
University of Kentucky 1949 Schedule	7
Salesmen's Club	9
1949 Football Rules Changes	13
A Quiz For The Quizzical	15
Wildcats of 1949	16-17-18-19
University of Kentucky Roster	21
Starting Line-ups	22-23
The Citadel Roster	24
All About College and Me	27
Answers To "A Quiz For The Quizzical"	28
President and History of The Citadel	32
The Citadel Coaching Staff	32
The Citadel Squad	35
The Citadel Stars	36
Kentucky's 1948 Record	40
Freshman Schedule 1949	43
Paul Bryant's Record As A Head Coach	43
University of Kentucky Athletic Plant Expansion	43

Official Kentucky Football Program

1949

No. 3

Published by University of Kentucky Athletic Association

Edited by Ken Kuhn, Sports Publicity Editor

Represented for National Advertising by Don Spencer Co., N.Y.



**THE HONORABLE
EARLE C. CLEMENTS**

Governor of Kentucky

Football K-man at the University of Kentucky . . . Starred in 1916 at a tackle position . . . Has encouraged expansion of sports facilities at U.K. and development of the University's program of athletics . . . Elected chief executive of the Commonwealth in 1947.

YOU CANNOT HAVE A GREAT STATE

WITHOUT A GREAT STATE UNIVERSITY

DR. HERMAN LEE DONOVAN

President

University of Kentucky

Under his administrative direction, a University expansion program is underway, features of which include the increase in the football stadium seating capacity and construction of the 12,000-seat Memorial Coliseum . . . Named sixth president of U.K. in 1941.



BERNIE A. SHIVELY

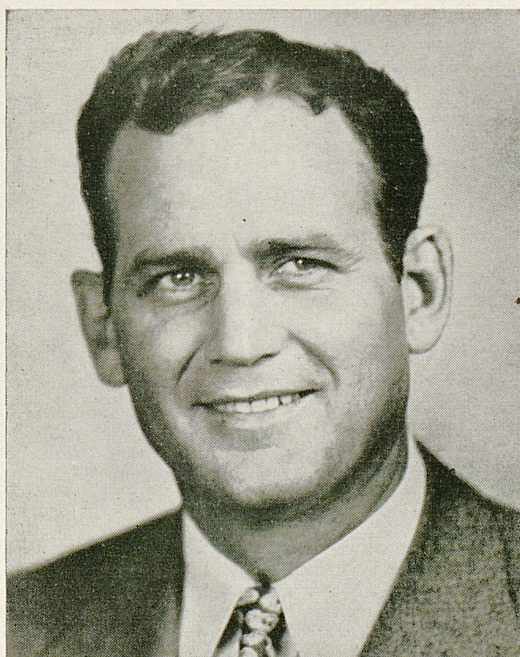
Director of Athletics

Supervisor of one of the nation's top athletics departments . . . All-American guard at Illinois in 1926 . . . Line coach at Kentucky 1927-33, 1938-44 . . . Head Coach of football 1945 . . . Former track coach . . . Director of Athletics since 1939.



THE STATE OF KENTUCKY IS THE

CAMPUS OF THE UNIVERSITY OF KENTUCKY



PAUL BRYANT

Head Football Coach

One of the outstanding young grid mentors in the country . . . Former star end with Alabama Crimson Tide . . . Assistant coach at Alabama and Vanderbilt . . . Head Coach at Maryland . . . In three seasons at Kentucky his teams have compiled a record of 20 wins, nine losses and two tie games.

University of Kentucky Coaching Staff



Directing the activities of the Kentucky football team for the 1949 season will be the group of coaches and assistants pictured above. From left to right, front row, are Ted Osborn, Joe Atkinson, Frank Moseley, Head Coach Paul Bryant, and Carney Laslie. In the back row, usual order, are Jim Brooks, Ermal Allen, Clarence Underwood, and George Sengel.

The Bryant Story

One of the nation's outstanding young football mentors, Paul Bryant's name has become synonymous in the South with an upswing in the grid fortune of Kentucky's Bluegrass Wildcats.

In three seasons at the helm of the Kentucky grid-iron machine, the 35-year-old former Alabama star has lifted the victory-famished Wildcats out of the doldrums of the Southeastern Conference football cellar and established them in a contending position despite numerous difficulties.

Bryant took just one year to accomplish the near-miraculous feat of re-building the shattered foundations of Kentucky football into a solid front that resulted in a season record of seven victories against three defeats—the Wildcats' most successful campaign since 1912. Calling upon his wartime service experience, Coach Bryant consolidated the gains and launched an even more startling attack during 1947 that saw the 'Cats roll up another impressive 7-3 record for the regular season and then add a thrilling 24-14 victory over Villanova in the Great Lakes Bowl inaugural at Cleveland—Kentucky's first bowl appearance.

Minus the services of nine players from the starting eleven and five more from the rest of the 1947 squad, the Kentucky team of last season nevertheless proved the surprise of the league. No one seriously expected the Wildcats to provide more than token trouble and were about to write them off as a threat after three early season losses. But the experts failed to count on the spirit instilled by the resourceful Bryant. Brazenly benching three of his top backfield stars, the Wildcats' head mentor jerked his charges out of their defeat lethargy enough to complete the remainder of the schedule without a setback. The record stood at 5-3-2 and the defeats came at the hands of the three teams who finished first, second and fourth in the conference standings.

Bryant's three-season record of 20 victories against

nine defeats and two tie games — the best in Kentucky football history for a three-year period since a 23-5-1 record was made during 1909-11 — has attracted wide attention. He has been mentioned prominently in speculation on the successors to head mentors at larger schools and in the pro ranks. The latest outcropping came last December when Bryant was rumored as the "odds-on choice" to become head coach of the professional Washington Redskins. However, he rejected the bid (which reportedly was for an eight-year term at double his present salary) to remain at Kentucky.

Bryant came to Kentucky in 1946 from the University of Maryland, where he had served as head grid-iron coach for one year after having been released from the Navy. During that year he produced the Maryland school's best football record in history — six victories, two losses and a tie.

Following his success in rewarding followers with a winning team during his first season at Kentucky, Bryant's original contract was torn up and a new 10-year agreement put in force. The current pact has eight more years to run.

A native of Fordyce, Ark., Bryant starred in football and basketball while attending high school there. Later, at the University of Alabama, he starred on the highly successful Crimson Tide elevens of the 1933-35 period, including the Rose Bowl team of 1935. Playing the end opposite the famed Don Hutson, he failed to gain significant attention from the press and fans but Coach Frank Thomas chose to retain him as an assistant following his graduation.

After four seasons with the Tide, Bryant moved to Vanderbilt as line coach and spent two years with the Commodores before leaving for the Navy in 1941. Following a training period, he went overseas to Africa and remained there until released as a Lieutenant Commander in 1945 just before the football season opened.

COACHING STAFF

CARNEY LASLIE . . . Like Paul Bryant is a University of Alabama product and a former Rose Bowl star for the Crimson Tide . . . Laslie lettered three years at 'Bama '30, '31 and '32 . . . In '32 he played on the Tide eleven which won a 24-0 decision over Washington State in the Pasadena classic . . . Remained at Alabama as an assistant for one year after graduating . . . Then he became head football coach at the Blytheville, Arkansas, high school . . . His teams went undefeated for three seasons and then Laslie went to V.M.I. as line coach . . . From the Lexington, Va., school, Laslie entered the Navy . . . While in the Navy, he coached the North Carolina Pre-Flight eleven . . . Released to inactive duty after three years service with the rank of Lieutenant Commander . . . Joined Bryant at Maryland a few days before the 1945 season opened and moved to the Bluegrass State with him in 1946 . . . Specializes in coaching tackles at Kentucky . . . Married and has a twelve-year-old daughter.

FRANK MOSELEY . . . A native of Montgomery, Alabama . . . Quarterbacked the Tide elevens in '31, '32 and '33 . . . Played two seasons on the same Alabama teams as Laslie . . . Came to Kentucky in 1934 and served as backfield coach under Chet Wynne and Ab Kirwan . . . Entered the Navy in '42 . . . Served as gunnery officer aboard the aircraft carrier Lexington with the rank of Lieutenant Commander . . . A veteran of practically every battle in the Pacific . . . Was with Bryant at Maryland and became his backfield coach at Kentucky in 1946 . . . Married and has two-year-old son . . . Called "Mose" by many, but "Bully" or "Chesty" by his old capstone acquaintances.

TED D. OSBORN . . . Is the latest addition to the Kentucky staff, arriving in 1948 from Akron Central High School, Akron, Ohio, where he had been head basketball and football coach for 12 years . . . Osborn was graduated from Ohio Wesleyan in 1931 where he starred as a halfback for three seasons . . . Following his graduation, Osborn went to Ohio State in 1933 as a freshman coach . . . Served during the war as a Lieutenant in the Navy.

JOE ATKINSON . . . Was a star guard with Vanderbilt from '39 to '41 . . . Bryant coached Atkinson in '40 and '41 when he was line coach at Vandy . . . Joe captained the '41 Commodore eleven . . . Entered the Navy after graduation in '42 . . . Served 46 months . . . Skipped a PT . . . Came to Kentucky immediately after his discharge in March, 1946 . . . Handles the guards . . . A native of Lebanon, Tennessee . . . Married.

CLARENCE UNDERWOOD . . . A 1938 Marshall College graduate where he was a varsity guard for three years . . . Joined Kentucky's staff early last year . . . Coached at Beckley, West Virginia, high school from 1938-43 . . . Served three years in the Navy as a Lieutenant . . . Married and the father of two children.

ERMAL ALLEN . . . Joined the Kentucky coaching staff after being ruled ineligible after two games in the 1946 season in one of the Southeastern Conference's most controversial cases . . . Allen played a year of pro-ball with the Cleveland Browns in 1947 as Paul Brown's T-quarterback . . . His thorough knowledge of the T-formation makes him key man on the Kentucky coaching staff . . . Married and is the father of two children.

These coaches are assisted part-time by Bill McCubbin and Jim Brooks.

WIN, LOSE
OR DRAW,
WE'RE WITH THE
WILDCATS ALL
THE WAY

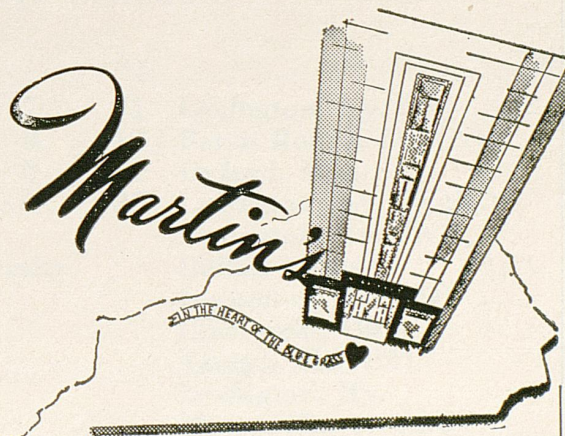
Williams Drug Store

Corner Main and Lime

For the

Smartest College Clothes

In town



LEXINGTON'S NEWEST FASHION
LANDMARK

Featuring

Blue Grass Fashions

FOR COMPLETE REPORTS ON THIS GAME AND OTHERS BEING PLAYED
TODAY, READ THE SPORTS SECTION OF SUNDAY HERALD-LEADER

Make Use of Our

Convenient Drive-in Facilities

15 PER CENT DISCOUNT ON

ALL CASH AND CARRY



De Boor

Laundry



Dry Cleaning

PHONE 2000

265 EUCLID AVE.

SCORES OVER STOLL FIELD PUBLIC - ADDRESS SYSTEM COME TO
YOU THROUGH THE COURTESY OF THE LEXINGTON NEWSPAPERS

THE COLONEL — KENTUCKY'S WILDCAT MASCOT



The Wildcats' 1949 Schedule

<i>Date</i>	<i>Opponent</i>		<i>Ky.</i>	<i>Site</i>
Sept. 17	Mississippi Southern	7	71	Lexington, Ky. (N)
Sept. 24	*Louisiana State University	0	19	Baton Rouge, La. (N)
Oct. 1	*University of Mississippi	0	47	Oxford, Miss.
Oct. 8	*University of Georgia	0	25	Lexington, Ky. (N-HC)
Oct. 15	The Citadel			Lexington, Ky. (N)
Oct. 22	Southern Methodist University			Dallas, Texas
Oct. 29	University of Cincinnati			Lexington, Ky. (D)
Nov. 5	Xavier (Ohio) University			Cincinnati, Ohio
Nov. 12	*University of Florida			Tampa, Fla. (N)
Nov. 19	*University of Tennessee			Lexington, Ky.
Nov. 25	Miami (Fla.) University			Miami, Fla. (N-FRI.)

*Southeastern Conference Games (N) Night Games

(HC) Homecoming Game (D) Dad's Day (FRI.) Friday Night Games

Home Games Start — 2 p.m. (CST) Day — 8 p.m. (CST) Night

FOR COMPLETE REPORTS ON THIS GAME AND OTHERS BEING PLAYED TODAY, READ THE SPORTS SECTION OF SUNDAY HERALD-LEADER

for complete coverage of all sports



*sports director,
Jimmy Finegan*

**listen
to
WHAS'
SPORTS TEAM**



*sportscaster,
Phil Sutterfield*

SPORTS DOUBLEHEADER—5:15 P.M. (MON.-FRI.)

KENTUCKIANA SPORTS—10:15 P.M. (MON.-SAT.)

for *today's* scores

from Kentuckiana and
across the nation . . .

**listen at 5:45 p.m. to
THE SATURDAY SCOREBOARD**

W H A S

Louisville

840 on the dial

Kentuckiana's Clear Channel Station

LEXINGTON SALESMEN'S CLUB



A portion of the membership of the Lexington Salesmen's Club interrupt their promotional activities on behalf of the University long enough for the photographer to catch this informal group picture. Shown in the usual order, front row, are: Gene Patterson, G. E. Stanfill, Chas. Wise, Dick Reddick, Ben Patterson, George Metcalfe, and Ed Abraham. In the second row, from left to right, are Bob Bradley, Thurmond Measel, William Grail, Mel Shumaker, M. F. Pra-ter, Norman Crawford, Gordon Tiedt, Fred Baumann, Chester Meyers, W. R. Endris, James Scully, Andy Willis, W. B. Hurley, George Horine, Charles Weaver, Charles Thompson, and Richard Skinner. The back row members are Terry Grissom, Flem Clardy, Wade Manis, Ed Pelz, and James Mundell.

Absent when the photograph was taken were: A. A. Abraham, Ed Bock, Stanley Cropper, William Curry, Ellery Chase, W. R. Campbell, Jack Denny, George Daniels, D. T. Davis, L. L. Dickstein, Tom Dewhurst, Russell Evans, H. T. Gibson, W. J. Harris, Ed Hunger, Jim King, Joe Johnson, N. L. Krieger, Ed Miller, Dick Page, Dick Queen, O. T. Robinson, A. P. Royster, R. E. Scofield, A. C. Stagg, H. V. Staton, George Wellinghurst, Glenwood Webb, C. V. Cowgill, A. D. Dorton and Phil Weissinger.

UNIVERSITY OF KENTUCKY OFFICE OF PRESIDENT

One step in the far-reaching master plan to bring national football recognition to the University of Kentucky is the necessity of increasing the patronage at the gridiron events to such an extent that major teams of the country may be profitably brought to Lexington as the foes of the Wildcats.

Full achievement of this goal was brought one step nearer to reality this year with the aid of the Lexington Salesmen's Club. This public-spirited organization of business men, at the request of University authorities, undertook the task of promoting the sale of season tickets throughout Eastern and Central Kentucky and it was tremendously successful in its efforts to fill the newly-enlarged stadium.

While not all of the 35,000 available seats were sold on a season basis, the members of the Lexington Salesmen's Club deserve the sincere thanks of the University of Kentucky for their splendid co-operation in selling a major portion of the season tickets. It is only through the voluntary public service of such noteworthy civic organizations that citizens of this great state will be able to witness football of a type that will bring credit to the State and University.

The University of Kentucky Athletics Association thanks the Lexington Salesmen's Club.

H. L. DONOVAN
President

Wilson Brothers

DOBBS

Malcolm

Nunn-Bush
ANKLE-fashioned OXFORDS

PARIS
GARTERS

Interwoven
STOCKING COMPANY

Kuppenheimer

Rugby
KNITTING MILLS
INC.

BOTANY "500"

Kenneth

Established
1888

ALLIGATOR
Rainwear

Wembley

KNO the
Manhattan

STETSON HATS

McGregor
SPORTSWEAR MADE IN U. S. A.

ARROW
FOR SHIRTS

TEXTRON Inc.

Stylepark

Hickey-Freeman
CUSTOMIZED CLOTHES

Nettleton Shoes

GRAVES, COX
AND COMPANY INC.
Established
1888

BEST WISHES TO

THE WILDCATS

FROM

BECKER

Launderers

Cleaners

SERVING UNIVERSITY STUDENTS FOR 35 YEARS

FOR COMPLETE REPORTS ON THIS GAME AND OTHERS BEING PLAYED
TODAY, READ THE SPORTS SECTION OF SUNDAY HERALD-LEADER

STEAKS

CHICKEN

COUNTRY HAM

SEA FOOD

MIXED DRINKS

Little Inn

Dancing Nightly

Winchester

Road

Phone

9610

LEXINGTON

NO COVER CHARGE

Perry Lumber Co.

"Contractors & Builders"

LUMBER

BUILDERS SUPPLIES

HARDWARE

APPLIANCES

246 Walton Ave.

Lexington, Ky.

THUMBNAIL SKETCHES

LEFT ENDS

BEN ZARANKA . . . 6-3 . . . 185 . . . 21 . . . East Chicago, Ind. . . . Junior . . . One of the Wildcats' best pass receivers . . . Expected to be starting left flankman . . . All-State end in high school and considered good nomination for All-Southeastern-Conference honors this season . . . Slugging centerfielder on Kentucky's successful 1949 baseball team, hitting at clip of better than .400 for the season . . . Made the NCAA District III All-Tournament team . . . Plans career in pro football or baseball following graduation.

NICK ODLIVAK . . . 6 . . . 190 . . . 23 . . . Aliquippa, Pa. . . . Junior . . . Has played virtually every position on the Kentucky grid team as a reserve. . . . Switched to end last season. . . . Expected to hit stride this season and stands good chance of garnering starting berth. . . . As a freshman, he hitch-hiked to Georgia game at Athens after being left off the travelling squad and played more than half of the contest as Kentucky's quarterback.

JERRY CLAIBORNE . . . 5-10 . . . 170 . . . 21 . . . Hopkinsville, Ky. . . . Junior . . . Living proof that the old adage that "brains and brawn don't mix" ain't necessarily so . . . Consistently makes all-A standings and majors in mathematics . . . He's small but possesses great competitive spirit . . . Switched from blocking back to end last year, he's sure to see plenty of action in a first-line reserve role.

JOHN NETOSKIE . . . 6 . . . 185 . . . 19 . . . New Kensington, Pa. . . . Sophomore . . . A newcomer showing plenty of promise of developing into a great end. . . . Expected to be used primarily in relief roles this season to gain experience . . . Has determination to play and is good pass-receiver.

LEFT TACKLES

BOB GAIN . . . 6-3 . . . 225 . . . 20 . . . Weirton, W. Va. . . . Junior . . . One of the South's outstanding nominees for All-American honors . . . Garnered honorable mention on All-American teams selected by Associated Press, United Press and Collier's last season . . . The same magazine named him on its All-Southern squad . . . Was on the SEC's All-Freshman squad his first season at Kentucky . . . Voted by SEC coaches as a lineman "most likely to succeed" in 1949. . . . Named "Player of the Week" by Atlanta Journal following brilliant play in Tennessee-Kentucky game at end of last season . . . Missed SEC first-string selection by scant margin . . . Despite size, the former West Virginia All-Stater is one of the Wildcats' fastest and most agile linemen . . . Possesses all physical and mental qualities to be great player and should reach new heights this year.

BOB POPE . . . 6-2 . . . 215 . . . 23 . . . Harlan, Ky. . . . Junior . . . Expected to be number two left tackle and Gain's principal replacement . . . Capable on both offense and defense . . . Lettered last year and is the only letterman at this position behind Gain . . . Starred at Harlan High as a tackle in 1942-43 and in 1946 after returning from two and one-half years Navy service in the Pacific . . . Made the All-State and All-Southern high school honor teams.

JAMES MC KENZIE . . . 6-1 . . . 215 . . . 18 . . . Gary, Ind. . . . Sophomore . . . Up from last year's freshman team to understudy veteran left tackles . . . Shows potentialities and should develop into good performer with another year's experience under his belt . . . Expected to see service in relief roles this season.

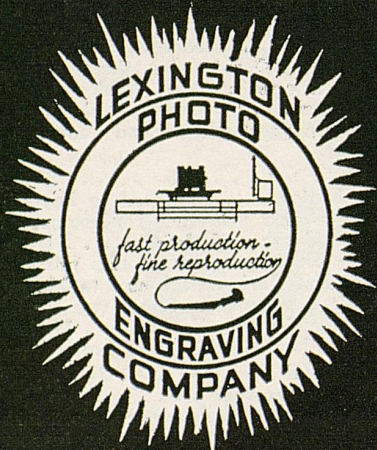
CHET LUKOWSKI . . . 6 . . . 195 . . . 19 . . . East Chicago, Ind. . . . Sophomore . . . The Kentucky coaching staff is predicting great things for this boy . . . With a year's experience in varsity ball this season, he should be ready to give good account of himself in 1950 . . . Captained his Roosevelt High school team in East Chicago and made the All-State team.

SCORES OVER STOLL FIELD PUBLIC - ADDRESS SYSTEM COME TO YOU THROUGH THE COURTESY OF THE LEXINGTON NEWSPAPERS

Campus Book Store

Everything for the Student

Serving
LEXINGTON
and
CENTRAL KENTUCKY



High Quality Cuts
Fast, Courteous Service

231 W. SHORT - - - - - Tel 3248

THUMBNAIL SKETCHES

LEFT GUARDS

DICK HOLWAY . . . 6 . . . 190 . . . 24 . . . Youngstown, Ohio . . . Senior . . . Chosen by teammates as Alternate Captain for the 1949 season . . . Almost certain choice as starting left guard . . . Played only one year of high school ball at Ursuline High but made the All-City team . . . Spent two of three years Army service in the C. B. I. Theater . . . Was on the UK freshman team in 1946 and earned a varsity letter in 1947 and '48.

BILL WANNAMAKER . . . 6-1 . . . 200 . . . 21 . . . Charleston, S. C. . . . Junior . . . Lettered in '48 and saw considerable service as a reserve . . . Was a member of UK freshman team in 1947 . . . Played in the backfield in high school . . . Certain to see extensive duty this season and may break into the starting lineup before season-end if his "never-say-die spirit" holds up.

JOHN BALDWIN . . . 6-2 . . . 190 . . . 19 . . . Madisonville, Ky. . . . Sophomore . . . A native Kentuckian expected to make good on the Wildcat varsity . . . May be "dark horse" to watch in this position . . . Played football, basketball and baseball with Madisonville High and made the All-Conference team of his high school league.

ED BURNETT . . . 6 . . . 185 . . . 19 . . . Andalusia, Ala. . . . Sophomore . . . Played four years of high school ball in Alabama and was a first-string guard on the All-State team in 1947 . . . Was a guard on UK freshman team last Fall . . . Will be used in relief role this year to gain experience.

BOB WERNER . . . 6 . . . 185 . . . 19 . . . West Allis, Wis. . . . Sophomore . . . Starred at tackle on the Marquette High school team in Milwaukee for three years before coming to Kentucky . . . Played guard with UK freshman team last Fall . . . Expected to see mostly reserve service this year while gaining experience.

FOR COMPLETE REPORTS ON THIS GAME AND OTHERS BEING PLAYED
TODAY, READ THE SPORTS SECTION OF SUNDAY HERALD-LEADER



1949 FOOTBALL RULES CHANGES

by CHARLES W. TUCKER, Jr.

FOOTBALL RULES for 1949 definitely have the "New Look." The Football Rules Committee of the N.C.A.A. took the Rules Book apart section by section, recodified it, and put it back together again in an effort to make the rules more uniform, easier for the spectators to understand, and to streamline the game. Three changes which will be obvious this year are:

1. AUTOMATIC TIME OUT AND UNLIMITED SUBSTITUTIONS EACH TIME THE BALL CHANGES HANDS, WITH TEAM "B" (the defensive team) BEING AWARDED A FIRST DOWN. This will give the teams employing the two platoon system ample opportunity to substitute entire offensive and defensive units without being charged with a time out. Each team is entitled to four free time outs during each half and even after a team has exhausted its free time outs, it may have additional time outs to replace an injured player or players without penalty, providing only the injured player or players are replaced. During such time outs the opponents may make unlimited substitutions. The rule leaves unchanged the practice of unlimited substitutions any time the clock has stopped but these substitutions must be completed when the referee indicates the ball is ready for play.

2. A LEGAL PASS INCOMPLETE IN THE OFFENSIVE TEAM'S END ZONE IS NO LONGER A SAFETY. A team can now make a pass if it wishes within the confines of its own end zone without risking a safety on the pass becoming incomplete in its end zone; as on other parts of the field, the result will simply be loss of a down and the ball will be returned to the spot where it was last put in play. If, however, this team should complete a pass in its end zone and the runner should be tackled behind his goal line, the ball becoming dead there, the result will be a safety.

3. THE RUNBACK OF A PUNT RECEIVED IN THE END ZONE WILL NOW BE PERMITTED. This year the rules permit a safety man to run a punt out of his end zone instead of being forced to accept a touchback. Even if tackled in his end zone, the ball being declared dead there, he has nothing to lose inasmuch as he will be awarded a touchback and the ball will be put in play by scrimmage on his 20 yard line. As most football fans will remember, the determining factor between a safety and a touchback is IMPETUS. In other words, if the attacking team is responsible for putting the ball in the defending team's end zone and it becomes dead there, the result would be a touchback. If, however, the defending team is responsible for putting the ball in its own end zone and it becomes dead there, the result would be a safety which scores two points for the attacking team and the ball is next put in play on the defending team's 20 yard line by a kick.

The following rules changes were adopted to eliminate certain practices of the past:

4. THE REGULATION PERMITTING ONE SUBSTITUTE TO ENTER THE GAME AT ANY TIME WITH THE CLOCK RUNNING HAS BEEN RESCINDED. The new rule was aimed at the constant parade of substitutes running on and off the field between every play, which in many ways disrupts the continuity of the game and is most confusing to those watching the game.

5. FUMBLE OUT OF BOUNDS NO LONGER BELONGS TO TEAM WHICH LAST TOUCHED THE BALL BEFORE IT WENT OUT OF BOUNDS. The new rule states that when a backward pass or fumble goes out of bounds between the goal lines, the ball becomes dead and belongs to the passing or fumbling team at the out of bounds spot. This rule is more equitable to the team who has fumbled the ball and eliminates players diving from all directions to try to touch the ball before it goes out of bounds, thereby eliminating the possibility of unnecessary injuries.

These three regulations were adopted in order to further clarify and define debatable points:

6. THE CLIPPING RULE HAS BEEN AMENDED IN ORDER TO ELIMINATE UNNECESSARY PENALTIES. The old rule called it clipping whenever a player was hit from the back even though it was not intentional. The new rule states that the action must take place *below the waist*, and reads as follows: "Clipping is throwing the body across or running into the back of an opponent, other than the runner, below the waist."

7. CLARIFICATION OF ILLEGAL USE OF THE HANDS IN BLOCKING. In the past it was possible for a player using a shoulder or chest block to supplement it with his hand or forearm and inflict considerable punishment upon his opponent even though he could be penalized for illegal use of the hands. Now in order to try to eliminate this practice the Rules Committee has specifically fixed the position of the hand in a shoulder or chest block by stating that the hand must be in contact with the body during the entire block and at no time may the hands be locked.

8. BACKFIELD MAN UNDER THE CENTER AS A LEGAL PASS RECEIVER IS BETTER DEFINED. The old rule merely stated that this man must be at least 1 yard behind the line of scrimmage in order to be eligible to receive a forward pass. It was next to impossible in most cases for the officials to determine whether or not this man was 1 yard behind the line of scrimmage. In order to leave no doubt as to the eligibility of this man the clarification states: "A back who is in position to take a hand-to-hand snap from the center is an *ineligible forward pass receiver*." A back is considered in position to take a hand-to-hand snap if at the time the ball leaves its position on the ground, his feet and body are so placed that it would be possible by reaching with his hand to touch the ball before it leaves the snapper's hand. This applies even though this back's feet and body are 1 yard or more behind his scrimmage line.

THUMBNAIL SKETCHES

LEFT GUARDS

ALLEN HAMILTON . . . 5-9 . . . 185 . . . 24 . . . Louisville, Ky. . . . Junior . . . Aggressive and vicious on both offense and defense . . . Earned letter as freshman in 1946 . . . Will bolster left guard position this year with experience available for relief assignments . . . Regular left fielder on the Wildcat diamond squad last season.

CENTERS

HARRY ULINSKI . . . 6-4 . . . 201 . . . 24 . . . Ambridge, Pa. . . . Senior . . . Captain of the Wildcats for 1949 . . . Handicapped by injuries at times in past seasons, but expected to be in good physical shape this year . . . Barring reversal in form, should be good nomination for All-Conference honors . . . A three-letter man at Kentucky with football K's for 1946-47-48 . . . Outstanding line backer . . . Comes from football family—brother Eddie is a guard on the professional Cleveland Browns . . . Married.

DOUG MOSELEY . . . 6-1 . . . 200 . . . 22 . . . Luverne, Ala. . . . Sophomore . . . Expected to be the Number two center on 1949 Wildcat team . . . Showed promise of developing into great performer while playing freshman ball at UK last year and during Spring practice this season . . . May press Captain Ulinski hard for starting assignment . . . Played fullback two years in high school . . . Second team All-State . . . In the Army one and one-half years.

JIM McCONNAUGHEY . . . 6-2 . . . 185 . . . 21 . . . New Orleans, La. . . . Sophomore . . . The Kentucky coaching staff is counting on more than his difficult-to-pronounce moniker to bring this boy to eventual stardom . . . With a year's experience in varsity ball he should be ready next season.

Hargett Construction Co.

INCORPORATED

General Contractors

Phone 2-2992

113 Walton Avenue Lexington, Ky.

Good Luck and Good Wishes

To The

Wildcats

Fred Bryant Motor Co.

'6' — OLDSMOBILE — '8'

Union Station Viaduct

Phone 3810

Baynham's

"Shoes and Accessories of Distinction"

MEN

WOMEN

CHILDREN

Louisville

Lexington

Nashville

FOR COMPLETE REPORTS ON THIS GAME AND OTHERS BEING PLAYED
TODAY, READ THE SPORTS SECTION OF SUNDAY HERALD-LEADER



A QUIZ FOR THE "QUIZZICAL"

FOR THE "QUIZZICAL" football fan, here's a quiz on matching questions compiled by America's famed bandleader, Horace Heidt. Incidentally,

Heidt, who played football and is a real fan, is heard every Sunday night over CBS on his highly rated and popular radio show.

I. Nickname the Coaches Right!

- | | |
|----------------|--------------------|
| 1. Hickman | a. "Old Fox" |
| 2. Bierman | b. "Grand Old Man" |
| 3. Dodd | c. "Iron Major" |
| 4. Warner | d. "Buff" |
| 5. Walker | e. "Tuss" |
| 6. Shaughnessy | f. "Little Giant" |
| 7. Stagg | g. "Old Dodge" |
| 8. McLaughry | h. "Silver Fox" |
| 9. Donelli | i. "Peahead" |
| 10. Cavanaugh | j. "Shag" |

II. Who Mascots Whom?

- | | | | |
|------------|------------|---------------|-----------------|
| 1. S.M.U. | a. Badger | 6. Columbia | f. Goat |
| 2. L.S.U. | b. Mule | 7. Pittsburgh | g. Bengal Tiger |
| 3. Yale | c. Gopher | 8. Wisconsin | h. Lion |
| 4. Navy | d. Mustang | 9. Army | i. Ram |
| 5. Fordham | e. Panther | 10. Minnesota | j. Bulldog |

III. What Schools Play on These Home Fields?

- | | |
|---------------------|------------------------|
| 1. Michie Stadium | a. Southern California |
| 2. Kenan Stadium | b. Texas A. & M. |
| 3. Coliseum | c. Pennsylvania |
| 4. Dyche Stadium | d. Wisconsin |
| 5. Palmer Stadium | e. North Carolina |
| 6. Baker Field | f. Georgia |
| 7. Franklin Field | g. Army |
| 8. Camp Randall | h. Princeton |
| 9. Kyle Field | i. Northwestern |
| 10. Sanford Stadium | j. Columbia |

IV. 1948 Conference Champs

- | | |
|--------------------|---------------------|
| 1. Ivy League | a. Utah |
| 2. Southeastern | b. California |
| 3. Southern | c. S.M.U. |
| 4. Big Ten | d. Texas Tech |
| 5. Big Seven | e. Georgia |
| 6. Missouri Valley | f. Cornell |
| 7. Southwest | g. Michigan |
| 8. Border | h. Clemson |
| 9. Rocky Mountain | i. Oklahoma |
| 10. Pacific Coast | j. Oklahoma A. & M. |

V. Who Contests for These Trophies?

- | | |
|------------------------|-------------------------------------|
| 1. Golden Bear | a. Duke-North Carolina |
| 2. Golden Egg | b. Tulane-L.S.U. |
| 3. Illibuck | c. Stanford-California |
| 4. Little Brown Jug | d. Illinois-Ohio State |
| 5. Little Brass Cannon | e. Temple-Bucknell |
| 6. Old Oaken Bucket | f. Michigan-Minnesota |
| 7. Old Shoe | g. Mississippi State-Mississippi U. |
| 8. "The Rag" | h. Washington U.-California U. |
| 9. Silver Goal Post | i. Purdue-Indiana |
| 10. The Axe | j. Rutgers-Lafayette-Lehigh |

VI. Give these All-American Players of the Last Ten Years their Right Positions.

- | | | | |
|-----------|--------------|--------|--------------|
| 1. End | a. Suffridge | 7. End | g. Aldrich |
| 2. Tackle | b. Blanchard | 8. QB | h. Savitsky |
| 3. Guard | c. Swiacki | 9. HB | i. Connor |
| 4. Center | d. Sinkwich | 10. HB | j. Kavanaugh |
| 5. Guard | e. Harmon | 11. FB | k. Blozis |
| 6. Tackle | f. Albert | | |

VII. What Schools Did These Famous Backfields Represent?

- | | |
|-----------------------------|---|
| 1. Harvard—1913 | a. McAfee, Lach, Davis, Prothro |
| 2. Notre Dame—1924 | b. Walker, Johnson, McKissack, Page |
| 3. Southern California—1931 | c. Mahan, Brickley, Bradlee, Logan |
| 4. Minnesota—1934 | d. Davis, Blanchard, Tucker, McWilliams |
| 5. Pittsburgh—1937 | e. Harmon, Evashevski, Kromer, Westfall |
| 6. Boston College—1940 | f. Stuhldreher, Crowley, Layden, Miller |
| 7. Army—1945 | g. Chickerno, Goldberg, Stebbins, Cassiano, Patrick |
| 8. Duke—1940 | h. Shaver, Pinckert, Musick, Mohler |
| 9. Michigan—1939 | i. Toczykowski, O'Rourke, Maznicki, Holovak |
| 10. S.M.U.—1948 | j. Lund, Kostka, Alphonse, Seidel |

VIII. Give the School Its Right Song!

- | | |
|------------------------|--|
| 1. Cornell | a. "Hail! to the victors valiant—" |
| 2. Yale | b. "We'll back you to stand 'Gainst the best in the land—" |
| 3. Columbia | c. "What though the odds be great or small—" |
| 4. Pennsylvania | d. "Fight, Fellows, Fight, Fight, Fight We'll win this game.—" |
| 5. Georgia Tech | e. "Who owns New York—" |
| 6. Michigan | f. "Fight on to victory, fight on—" |
| 7. Southern California | g. "Far above Cayuga's waters—" |
| 8. Notre Dame | h. "Hurrah for the Red and Blue—" |
| 9. Wisconsin | i. "Boola, boola—" |
| 10. Illinois | j. "I'm a rambling wreck—" |

(Answers on page 28)

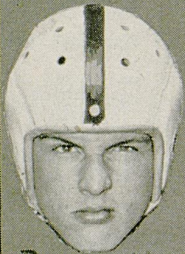
Page Fifteen



Martin



Conde



Burnett



Lukowski



Baldwin



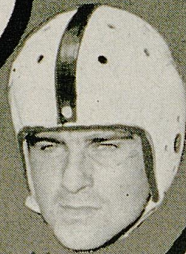
Griggs



Parilli



Moseley



Vance



McKenzie



Brooks



Koslowski



Fuller



Idleman



Ignarski

E. BROS



Bentley



Ulinski



Holway



Phelps



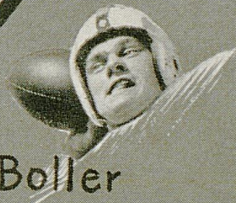
Truman



Bradshaw



Genito



Boller



Howe



McDermott



Porter



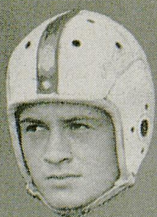
McClendon



Werner



Webb



Wooddell



Frampton



Wannamaker



Hamilton



Clark



Bezuk



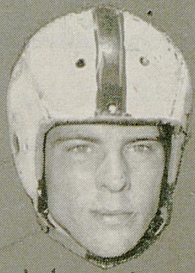
Bruno



Shofnitt



Zaranka



Martin



Dawson



Rogers



Jones



Gain



Yowarsky



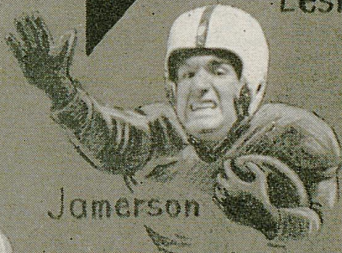
Odlivak



Fucci



Leskovar



Jamerson



Netoskie



McConnaughey



Pope

E. B. R. 1933

We're Pulling For...

KENTUCKY'S "SCRAPPY"

WILDCATS

*To Make 1949
A Great Season*



Guy A. Huguelet ❖ T. W. DeZonia

SCORES OVER STOLL FIELD PUBLIC - ADDRESS SYSTEM COME TO
YOU THROUGH THE COURTESY OF THE LEXINGTON NEWSPAPERS

UNIVERSITY OF KENTUCKY

1949 VARSITY ROSTER

(Players Listed in Alphabetical Order — For Numerical Order See Center Spread)

No.	Name	Pos.	Age	Wt.	Ht.	Class	Yrs. Ltrd.	Hometown
63	Baldwin, John	LG	19	190	6'2"	Soph.		Madisonville, Ky.
35	Bentley, Charles	RE	25	195	6'	Sr.	46-7-8	Gadsden, Ala.
12	Bezuk, Robert	Q	20	150	5'8"	Soph.		Ambridge, Pa.
16	Boller, William	LH	22	173	5'11"	Sr.	46-7-8	Beaver Falls, Pa.
83	Bradshaw, Charles	RE	26	175	6'	Sr.	46-7-8	Montgomery, Ala.
15	Brooks, Robert	LH	21	170	5'11"	Soph.	48	Gary, Ind.
85	Bruno, Albert	RE	21	185	6'3"	Soph.		West Chester, Pa.
82	Claiborne, Jerry	LE	21	170	5'10"	Jr.	46-48	Hopkinsville, Ky.
26	Clark, Emery	LH	19	168	5'9"	Soph.		Carlisle, Ky.
25	Conde, William	RG	23	198	5'11"	Soph.		Charlestown, W. Va.
84	Frampton, Don	RE	21	185	6'3"	Soph.		Bradford, Pa.
11	Fucci, Dominic	Q	21	175	5'11"	Jr.	48	New Village, N. J.
70	Gain, Robert	LT	20	225	6'3"	Jr.	47-48	Weirton, W. Va.
31	Genito, Ralph	FB	25	165	5'11"	Sr.	47-48	Duquesne, Pa.
65	Hamilton, Allen	LG	25	185	5'9"	Jr.	46	Louisville, Ky.
24	Hamilton, Edmond	RH	19	170	5'11"	Soph.		Louisville, Ky.
64	Holway, Richard	LG	24	190	6'	Sr.	47-48	Youngstown, Ohio
20	Howe, James	RH	22	178	6'2"	Sr.	44-7-8	Ft. Thomas, Ky.
71	Ignarski, John	RG	19	205	5'11"	Soph.		S. Milwaukee, Wis.
28	Jamerson, Wilbur	RH	20	168	5'9"	Jr.	47-48	Henderson, Ky.
60	James, Pat	RG	22	185	6'1"	Jr.	48	New Boston, Ohio
17	Jones, Paul	Q	23	170	5'11"	Jr.		Corbin, Ky.
29	Lawson, Clifton	RH	19	170	6'	Soph.		Pocahontas, Ark.
33	Leskovar, William	FB	20	190	6'2"	Soph.	46	Fairmont, W. Va.
19	Martin, Richard	RH	20	170	6'	Jr.	47-48	Chicago, Ill.
51	Moseley, Douglas	C	22	200	6'1"	Soph.		Luverne, Ala.
87	McClendon, Charles	RE	20	187	6'1"	Soph.		Lewisville, Ark.
54	McConnaughey, James	C	21	185	6'2"	Soph.		New Orleans, La.
72	McDermott, Lloyd	RT	24	220	6'1"	Sr.	47-48	Covington, Ky.
75	McKenzie, James	LT	18	215	6'1"	Soph.		Gary, Ind.
86	Netoskie, John	LE	19	185	6'	Soph.		New Kensington, Pa.
81	Odlikav, Nick	RE	23	190	6'	Jr.	46-48	Aliquippa, Pa.
10	Parilli, Vito	Q	20	185	6'1"	Soph.		Rochester, Pa.
22	Phelps, Donald	LH	25	175	5'11"	Sr.	46-47	Lexington, Ky.
73	Pope, Bob	LT	23	215	6'2"	Jr.	48	Harlan, Ky.
61	Porter, Raymond	RG	23	195	5'11"	Sr.	47-48	Cincinnati, Ohio
55	Rogers, Harry	C	21	190	6'4"	Jr.		Frankfort, Ky.
52	Schaffnit, William	C	23	184	6'	Jr.	48	West Haven, Conn.
30	Truman, Lee	FB	21	185	6'	Sr.	47-48	Owensboro, Ky.
50	Ulinski, Harry	C	24	201	6'4"	Sr.	46-7-8	Ambridge, Pa.
76	Vance, Wendell	RT	23	200	6'4"	Soph.		Louisville, Ky.
62	Wannamaker, William	LG	21	200	6'1"	Jr.	48	Charleston, S. C.
34	Webb, Clayton	FB	20	185	6'	Jr.	48	St. Albans, W. Va.
18	Wooddell, Harold	FB	20	182	5'11"	Jr.	48	Beckley, W. Va.
74	Yowarsky, Walter	RT	21	197	6'1"	Jr.	48	Cleveland, Ohio
80	Zaranka, Ben	LE	21	185	6'3"	Jr.	47-48	E. Chicago, Ind.

FOR COMPLETE REPORTS ON THIS GAME AND OTHERS BEING PLAYED
TODAY, READ THE SPORTS SECTION OF SUNDAY HERALD-LEADER

KENTUCKY
PROBABLE STARTING LINEUP

LHB Phelps 22			FB Leskovar 33			RHB Howe 20
			QB Parilli 10			
LE Zaranka 80	LT Pope 73	LG Holway 64	C Moseley 51	RG Ignarski 71	RT Yowarsky 74	RE Odliyak 81

SQUAD LIST

(Players Listed in Numerical Order)

10 Parilli, Q	31 Genito, FB	71 Ignarski, RG
11 Fucci, Q	33 Leskovar, FB	72 McDermott, RT
12 Bezuk, Q	34 Webb, FB	73 Pope, LT
15 Brooks, LH	35 Bentley, RE	74 Yowarsky, RT
16 Boller, LH	50 Ulinski, C	75 McKenzie, LT
17 Jones, Q	51 Moseley, C	76 Vance, RT
18 Wooddell, FB	52 Schaffnit, C	80 Zaranka, LE
19 Martin, RH	54 McConnaughey, C	81 Odliyak, RE
20 Howe, RH	55 Rogers, C	82 Claiborne, LE
22 Phelps, LH	60 James, RG	83 Bradshaw, RE
24 Hamilton, RH	61 Porter, RG	84 Frampton, RE
25 Conde, RG	62 Wannamaker, LG	85 Bruno, RE
26 Clark, LH	63 Baldwin, LG	86 Netoskle, LE
28 Jamerson, RH	64 Holway, LG	87 McClendon, RE
29 Lawson, RH	65 Hamilton, LG	
30 Truman, FB	70 Gain, LT	

OFFICIALS

Referee — C. A. Dandelake (Western Carolina Teachers)
 Umpire — J. E. Burghard (Mississippi College)
 Head Linesman — T. J. Reames (Clemson)

CHESTERFIELD'S
RADIO AND TELEVISION

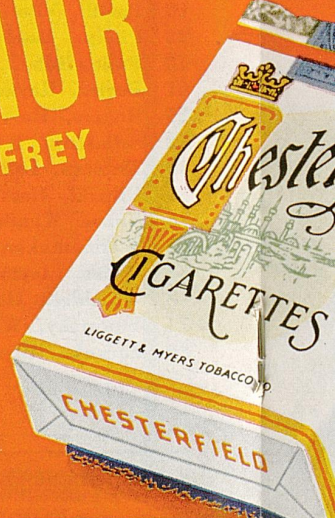
"Smoke OUR
Always Buy C



A

ARTHUR
GODFREY

ARTHUR GODFREY—Next-door neighbor to 90 million people! You look at him—listen to him—laugh with him and love him!



Copyright 1949, Liggett & Myers Tobacco Co.

ALL CBS RADIO AND TELEVISION STATIONS

MILDER CHESTERFIELD

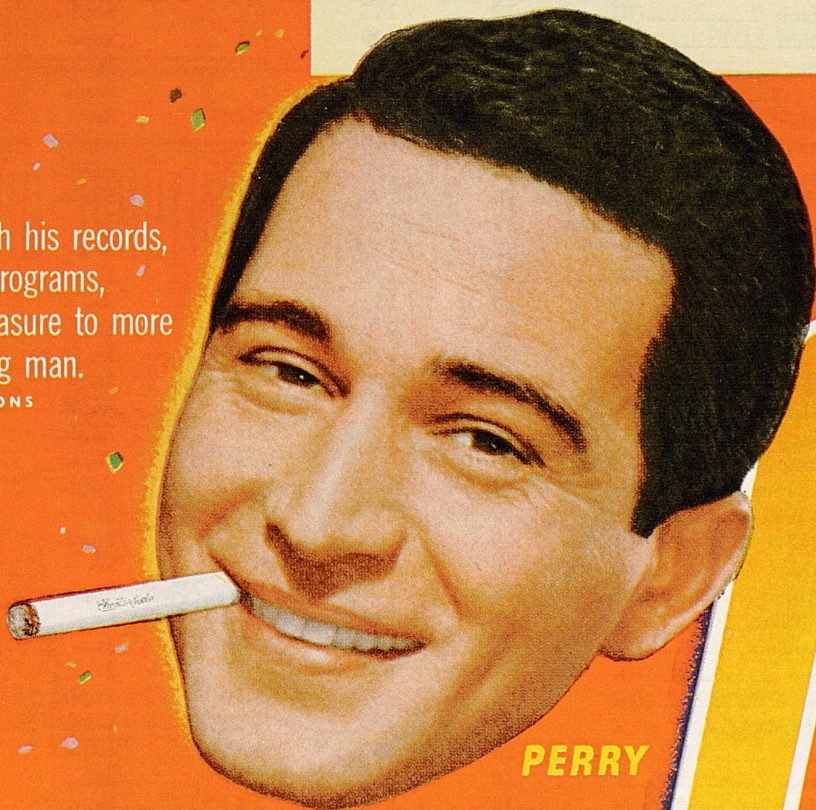
FIELD'S BIG THREE
TELEVISION STARS SAY...

OUR cigarette
Buy "Chesterfield"

BING
CROSBY

BING CROSBY — Through his records, his movies, and his radio programs, Bing has brought more pleasure to more people than any other living man.

ALL CBS RADIO STATIONS



PERRY

PERRY COMO — Now in his seventh year as Chesterfield's great radio and recording star. Today, millions acclaim him as television's greatest singing star.

ALL NBC RADIO AND TELEVISION STATIONS

THE CITADEL
PROBABLE STARTING LINEUP

LHB Finckney 22		FB Bozeman 24		RHB Brugh 40		
		QB Zelinski or Chandler 14 15				
LE Foxworth 80	LT McGinn 77	LG Huddle 63	C Doss 50	RG Malcarne 62	RT Redditt 73	RE Ohlandt 83

SQUAD LIST

(Players Listed in Numerical Order)

11 Gregory, HB	50 Doss, C	74 Webster, T
13 McConnell, HB	51 Haltiwanger, C	75 Clynes, T
14 Zelinski, QB	52 Matthews, E	76 Clyne, T
15 Chandler, QB	53 Bailey, C	77 McGinn, T
16 Pigott, QB	54 Rubino, C	78 Laufer, T
22 Pinckney, HB	55 Leach, G	79 Fitzgerald, T
23 Fabian, QB	60 Boyd, HB	80 Foxworth, E
24 Bozeman, FB	61 Barnett, G	81 Pickard, HB
31 Bohlen, FB	62 Malcarne, G	82 Brownlow, E
32 Gunning, HB	63 Huddle, G	83 Ohlandt, E
33 Baldwin, FB	65 Hill, G	84 Willis, E
40 Brugh, HB	66 Fox, G	86 Young, E
41 Kennedy, HB	67 Bost, G	87 Britt, E
42 Dumfee, HB	70 DeLuca, E	88 Bogamil, E
44 Brewer, HB	71 Whelan, T	Mange, FB
45 Carter, HB	73 Redditt, T	

OFFICIALS

Field Judge — Jack Griffith (Georgia)

Electric Clock Operator — Gene Higgins (Vanderbilt)

COMO

ELD

Largest selling cigarette in America's Colleges
(BY LATEST NATIONAL SURVEY)

THE CITADEL

1949 VARSITY ROSTER

(Players Listed in Alphabetical Order — For Numerical Order See Center Spread)

No.	Name	Pos.	Age	Wt.	Ht.	Class	Hometown
53	Bailey, James	C	24	190	6'	Sr.	Florence, S. C.
33	Baldwin, William	FB	18	180	5'10"	Soph.	Sumter, S. C.
61	Barnett, Dave	G	19	180	5'7"	Jr.	Bluefield, W. Va.
88	Bogumil, Walter	E	19	175	6'1"	Jr.	Wilkes Barre, Pa.
31	Bohlen, Alfred	FB	19	180	5'9"	Jr.	Orangeburg, S. C.
67	Bost, Joseph	G	18	190	6'1"	Soph.	Concord, N. C.
60	Boyd, Robert	HB	22	175	5'11½"	Sr.	Greenville, S. C.
24	Bozeman, Curtis	FB	18	170	6'1"	Soph.	Rome, Ga.
44	Brewer, Richard	HB	21	170	5'10½"	Soph.	N. Charleston, S. C.
87	Britt, Terry	E	18	189	6'4"	Soph.	Elizabethtown, N. C.
82	Brownlow, Harmon	E	19	180	6'2½"	Soph.	Winston-Salem, N. C.
40	Brugh, Walter	HB	22	165	5'9½"	Jr.	Paintsville, Ky.
45	Carter, Robert	HB	20	160	5'11½"	Soph.	S. Pittsburgh, Tenn.
15	Chandler, Jack	QB	18	175	6'	Soph.	Sumter, S. C.
76	Clyne, Norman	T	18	200	6'1"	Soph.	Naval Base, S. C.
70	DeLuca, Jerry	E	20	175	6'1"	Jr.	Merchantsville, N. J.
50	Doss, James	C	20	185	6'	Soph.	Rome, Ga.
42	Dunfee, Luther	HB	23	170	5'10"	Sr.	Athens, Ohio
75	Dyches, Boncil	T	19	190	6'	Soph.	Columbia, S. C.
66	Fox, Amos	G	18	183	5'11"	Soph.	Aliceville, Ala.
79	Fitzgerald, James	T	18	193	6'1"	Soph.	Rome, Ga.
23	Fabian, Charles	QB	19	165	5'10"	Jr.	Charleston, S. C.
80	Foxworth, Eugene	E	22	183	6'3"	Sr.	Raleigh, N. C.
32	Gunning, Robert	HB	19	175	5'9½"	Jr.	Paintsville, Ky.
11	Gregory, Joseph	HB	25	151	5'11"	Sr.	Kershaw, S. C.
51	Haltiwanger, Rufus	C	23	210	6'3"	Sr.	Columbia, S. C.
63	Huddle, Jack	G	21	175	5'9½"	Jr.	Bluefield, W. Va.
65	Hill, Eugene	G	20	200	6'	Sr.	N. Charleston, S. C.
41	Kennedy, Elvin	HB	18	155	5'8"	Soph.	Charleston, S. C.
55	Leach, William	G	18	190	6'1"	Soph.	N. Charleston, S. C.
78	Laufer, Robert	T	19	180	6'2"	Soph.	Glenolden, Pa.
	Mange, Emerson	FB	19	180	5'10"	Soph.	Hanover, Pa.
13	McConnell, Jack	HB	19	175	5'10½"	Jr.	Elmira, N. Y.
77	McGinn, Robert	T	19	205	6'	Soph.	Swissvale, Pa.
52	Mathews, Dale	E	19	173	6'	Sr.	Charleston, S. C.
62	Malcarne, Albert	G	18	177	5'9"	Soph.	Wilkes-Barre, Pa.
83	Ohlandt, William	E	21	183	6'1"	Sr.	Charleston, S. C.
22	Pinckney, Lucian	HB	21	165	5'9½"	Jr.	Mt. Pleasant, S. C.
81	Pickard, Jack	HB	23	177	5'11"	Jr.	Detroit, Mich.
16	Pigott, Dave	QB	21	151	5'10"	Soph.	N. Charleston, S. C.
73	Redditt, Robert	T	17	199	5'11½"	Soph.	New Orleans, La.
54	Rubino, Sam	C	20	190	5'11½"	Soph.	Monaca, Pa.
71	Whelan, James	T	22	200	6'1"	Jr.	Charleston, Mass.
74	Webster, Clark	T	24	190	5'11"	Sr.	Statesville, N. C.
86	Young, Ray	E	20	161	6'1"	Sr.	Augusta, Ga.
84	Willis, King	E	18	185	6'2"	Soph.	Concord, N. C.
14	Zelinski, Dick	QB	19	177	5'10"	Soph.	Pittsburgh, Pa.

SCORES OVER STOLL FIELD PUBLIC - ADDRESS SYSTEM COME TO
YOU THROUGH THE COURTESY OF THE LEXINGTON NEWSPAPERS

Football and Basketball

We have in stock for AT ONCE delivery a complete line of football and basketball supplies for the coming 1949-1950 season.

We feature the following nationally advertised leading brands of athletic equipment and when you buy, why not purchase items which already have a reputation?

MacGregor-Goldsmith
 A. G. Spalding & Bros.
 A. J. Reach & Company
 Bike Web Mfg. Co.
 Riddell Helmets and Shoes
 Voit Rubber Balls
 Converse All Star Shoes
 Wright and Ditson Co.
 O'Shea Knitting Mills
 Hillerich & Bradsby
 Wilson Sporting Goods Co.
 Wigwam Sweat Socks
 Dudley Locks
 Fan-shaped Backboards

Nurre Glass Banks
 Imperial Sweaters
 Coach Rupp Gym Pants
 Fair Play Electric Scoreboards
 Butwin Award Jackets
 Cramer's First-Aid Supplies
 Dodge Trophies
 E. R. Moore's Girls' Gym Suits
 Gymnasium Supplied by Porter
 Southern Mfg. Co.
 General Athletic Products Co.
 MacGregor Golf Clubs
 Swings, Slides, See-Saws, etc.

Our new Fall and Winter catalog No. 149 is just off of the press. If you have failed to receive your copy, write us.

Special prices to schools and colleges.

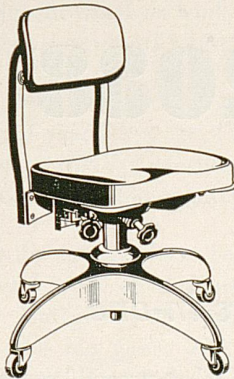
Hunt's Athletic Goods Co.

PHONE NO. 103

MAYFIELD, KY.

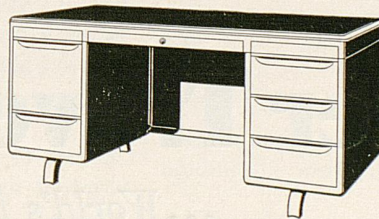
TRANSYLVANIA PRINTING COMPANY

Foremost in Metal
Business Furniture



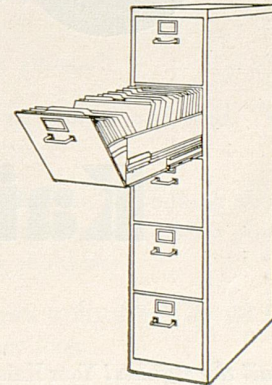
Goodform
REG. U. S. PAT. OFF.

ADJUSTABLE
ALUMINUM
CHAIRS



Made-Maker
REG. U. S. PAT. OFFICE

DESKS
TABLES



Superfiler
REG. U. S. PAT. OFF.

Distributors of America's Leading Office Equipment

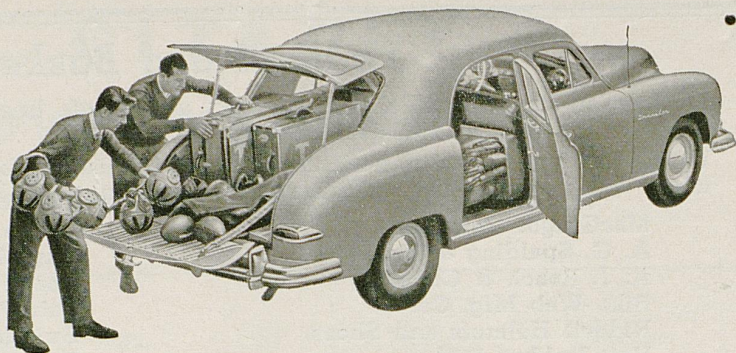
TRANSYLVANIA PRINTING COMPANY

108 N. Upper St.
LEXINGTON, KY.

STATIONERS OFFICE OUTFITTERS PRINTERS

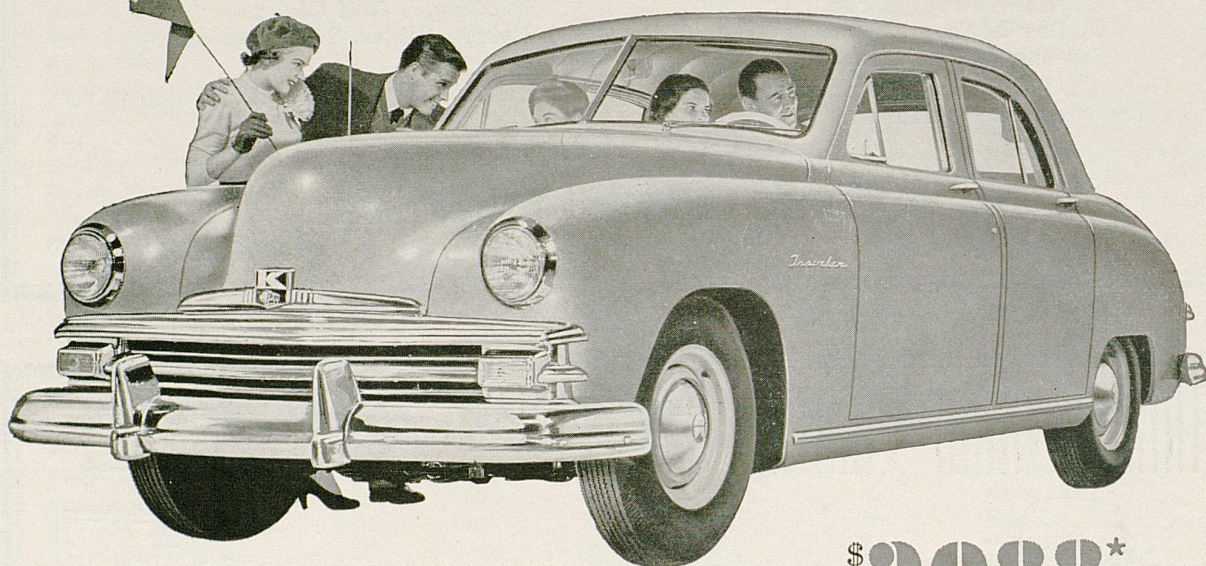
FOR COMPLETE REPORTS ON THIS GAME AND OTHERS BEING PLAYED
TODAY, READ THE SPORTS SECTION OF SUNDAY HERALD-LEADER

For gridiron heroes



or grandstand quarterbacks...

here's the All-American family car!



only \$2088*

Kaiser Traveler

...World's first 2-cars-in-one

You call the signals! Your Kaiser Traveler puts two cars at your disposal. In 10 seconds, you can convert this big, beautiful 6-passenger luxury sedan to a husky cargo cruiser...ready to help pay its own way.

Look at that big, burly back! A 10-foot long, steel-shod hold, with 130 cubic feet of room to haul football gear or oak veneer...boats, boxes or bales of hay.

America's smartest line play! The sweeping lines of a big, big car add to your pride, pleasure and riding ease. Big 123½" wheelbase ends 'short car fatigue'.

MARTIN JESSEE MOTORS, Distributor
328 E. VINE ST. LEXINGTON, KY.

Page Twenty-six

Driving power to spare! Velvet-smooth Thunderhead engine keeps you ahead of the field on long runs...slips you through traffic smoothly. 7.3-to-1 high compression ratio slashes gas costs.

Plenty of extra points! The Kaiser Traveler gives you an 'extra car' for your money...two kinds of cars for the price of only one. So why sit on the sideline when you can drive a Kaiser Traveler!

See your Kaiser-Frazer dealer for a demonstration
Hear Walter Winchell. Every Sunday evening. A.B.C.

1949 KAISER-FRAZER SALES CORP., Willow Run, Mich

*Factory delivered, equipped. Fed. tax paid.
Transportation, local taxes (if any) add'l.



ALL ABOUT COLLEGE AND ME

by BOB HOPE

WELL, HERE I am writing about college. College! . . . that's sleeping sickness with cokes.

Now, don't get me wrong. I really love college. And I went there, too. I can vividly remember my college days . . . all three of them.

And I would have been a fraternity man, too, but some cad started the rumor that I wore garters.

But if I had it to do over I'd go to college again. In fact, I'd take a special business course with plenty of hours in accounting and statistics. Then I could get a job in Crosby's bank and maybe even get inside that big, green-lined vault.

I've been seeing pretty much of college the last couple of years. You see, I'm on the air every Tuesday night over NBC (Advertisement) and we play several colleges around the country every season.

And the colleges have been awfully nice to me, too. Usually I work on a guarantee. Like when I played at the University of Southern California the week before the big game with Notre Dame. "If you do well, Mister Hope," the president told me, "I'll guarantee you your choice of tickets for the football game." I thanked him heartily . . . then he added, "at either end of the field."

Of course, I wouldn't say that football is important at college. But one morning last fall I saw a tackle going to class . . . and the president of the college was carrying him piggy-back.

And they're really doing a lot of building on the college campuses these days. And they're going up in a hurry, too. On one campus I visited they had

built a dormitory so fast that when it was all finished the termites were still in their pajamas. And I saw another place they put up so quickly even Kilroy hadn't been there. And then I found out why . . . Richard wouldn't let him in.

I was really a tiger on the gridiron . . . so the first thing I did when I went back for a visit was to look up my old coach. I walked right into his office, stuck out my hand and said, "Hi, Coach! Well, here I am . . . the greatest athlete you ever coached."

That stumped him. He didn't say a thing, so I went on:

"I had the body of an athlete."

He took one good look, smiled and said, "Well, Hope, you still got the feet."

This made me mad. "What are you talking about?" I asked indignantly. "I used to pose for Atlas pictures, holding the world on my shoulders."

"The globe slipped down a bit didn't it, old boy," he said as he took another look.

But I went right on. "Just picture me as Tarzan, swinging through the trees," I pointed out.

"Please, Hope," he asked, "let's leave your ancestors out of this. So you think you were a football player, huh?"

"Yes sir," I said. And to refresh his memory I asked, "How about the day I made all those long runs???"

He smiled. "Yes, Hope," he said, "that was surely great. You never spilled a drop out of the bucket."

THUMBNAIL SKETCHES

CENTERS

ROY FORD . . . 6-1 . . . 185 . . . 21 . . . Anniston, Ala. . . Junior . . . Served as the number one replacement for Ulinski last year . . . One of three lettermen among center candidates . . . Sure to see considerable duty this season as an "old reliable" . . . Star pitcher with Wildcat baseball team.

BILL SHAFNITT . . . 6 . . . 184 . . . 23 . . . West Haven, Conn. . . Junior . . . Lettered in '48 as a reserve and expected to bolster the center slot again this season . . . Vicious on defense . . . Played basketball, baseball, and football in high school, earning nine letters . . . Navy veteran . . . Married.

HARRY ROGERS . . . 6-4 . . . 190 . . . 21 . . . Frankfort, Ky. . . Junior . . . Veteran non-letterman expected to press center candidates for the first-string reserve spot . . . Was All-State center at Frankfort High school.

RIGHT GUARDS

PAT JAMES . . . 6-1 . . . 185 . . . 22 . . . New Boston, Ohio . . . Junior . . . A reliable veteran who hit his stride last season and can be expected to reach new heights this season under pressure from capable reserves . . . Lettered in '48 . . . Played in backfield at Glenwood High in New Boston . . . Named Captain and Most Valuable Player at end of scholastic career . . . Played tackle as a UK freshman.

JOHN IGNARSKI . . . 5-11 . . . 205 . . . 19 . . . South Milwaukee, Wis. . . Sophomore . . . An outstanding sophomore prospect . . . Great things are predicted for this boy by Coach Bryant and staff . . . May prove lot of trouble to veterans attempting to

hold down tackle or guard positions . . . All-State guard in high school and captained South All-Stars in Schoolboy North-South game in 1946 . . . Played guard as UK freshman last year, but may be shifted to tackle this season.

BILL DAWSON . . . 5-10 . . . 185 . . . 25 . . . Louisville, Ky. . . Junior . . . Coaches can never count "Bull" out of the picture and he can be expected to challenge seriously for a starting berth this year . . . A short, squat individual, The Round Man is difficult to move out of position on defense and he's a fine blocker offensively . . . Lettered in 1946 and again last year . . . Spent three and one-half years in the Navy.

RAY PORTER . . . 5-11 . . . 195 . . . 23 . . . Cincinnati, Ohio. . . Senior . . . A converted back, Ray will see plenty of service this Fall . . . He's a good, steady all-around player and will be valuable assistance if he can come through with another good season . . . Lettered in 1947 and '48 . . . Served in the Marine Corps for three years.

BILL CONDE . . . 5-11 . . . 198 . . . 23 . . . Charleston, W. Va. . . Sophomore . . . Son of a railroad engineer, "Moon" played two years as a fullback and one season as an end with Charleston Catholic High. . . He's expected to develop with experience and aid the Wildcats' cause considerably . . . Spent three years in the ETO as a Navy man . . . Married.


RIGHT TACKLES

FRANK FULLER . . . 6-4 . . . 200 . . . 20 . . . DuBois, Pa. . . Sophomore . . . A promising prospect needing more seasoning . . . Probably will be used in reserve duties this year . . . Made the All-County team as a tackle on DuBois High team and played same position as UK freshman.

ANSWERS TO

A QUIZ FOR THE "QUIZZICAL"

I. 1-f	II. 1-d	III. 1-g	IV. 1-f
2-h	2-g	2-e	2-e
3-g	3-j	3-a	3-h
4-a	4-f	4-i	4-g
5-i	5-i	5-h	5-i
6-j	6-h	6-j	6-j
7-b	7-e	7-c	7-c
8-e	8-a	8-d	8-d
9-d	9-b	9-b	9-a
10-c	10-c	10-f	10-b
V. 1-h	VI. 1-c or j	VII. 1-c	VIII. 1-g
2-g	2-i or k	2-f	2-i
3-d	3-a or h	3-h	3-e
4-f	4-g	4-j	4-h
5-j	5-a or h	5-g	5-j
6-i	6-i or k	6-i	6-a
7-e	7-c or j	7-d	7-f
8-b	8-f	8-a	8-c
9-a	9-d or e	9-e	9-d
10-c	10-d or e	10-b	10-b
	11-b		



FAULKNER

Builders and Supply Co.


Coal - Builders Supplies - Coke

585 East Third Street — Lexington, Ky.

Phone 2340 — Dial 4-2433

●

BUY THE BEST — IT'S CHEAPER



SCORES OVER STOLL FIELD PUBLIC - ADDRESS SYSTEM COME TO
YOU THROUGH THE COURTESY OF 'THE LEXINGTON NEWSPAPERS

THE PHOENIX HOTEL

Lexington, Kentucky

Where old and new
friends meet during
the Football Season

AIR CONDITIONED

for your comfort

The
Colonial Room *Bluegrass Room*

Delectable Appetizing
Food Cocktails

GUYS AND GALS

HOW ABOUT

A JUICY HAMBURGER

AND A CUP OF GOOD

HOT COFFEE

COME ON DOWN TO

THE VILLAGE GREEN

119 West Main St.

Open All Nite

GREETING CARD

HEADQUARTERS

IN LEXINGTON, KY.

George Pridemore & Son

Plumbing and Heating Contractors

We are proud of Coach Paul Bryant's Wildcats and wish them a successful season.

We also are proud of the privilege of being chosen to install plumbing in the new Memorial Coliseum, the plumbing and heating in the new service building, the new underground steam distribution system for the University, and various other projects.

Good Equipment -- Good Installation
Satisfaction At A Saving

1006 NORTH LIMESTONE ST.

CALL 1848

FOR COMPLETE REPORTS ON THIS GAME AND OTHERS BEING PLAYED
TODAY, READ THE SPORTS SECTION OF SUNDAY HERALD-LEADER

THUMBNAIL SKETCHES

RIGHT TACKLES

LLOYD McDERMOTT . . . 6-1 . . . 220 . . . 24 . . .
Covington, Ky. . . Senior . . . In his final season of
competition, big "Mac" is being counted upon heavily
in the weak tackle slot . . . Almost certain to be a
starter this year . . . Has native ability and desire to
play . . . Saw action as a sophomore and was regular
last season, starting several contests . . . He's tough,
rough and has all the physical equipment to match
ability . . . Was an All-State player with Holmes High
in Covington . . . Lettered at UK in 1947 and 48 . . .
Veteran of two and one-half years with the Marines in
Pacific Theater . . . Plans to play pro football . . .
Married.

WALT YOWARSKY . . . 6-1 . . . 197 . . . 21 . . .
Cleveland, Ohio . . . Junior . . . "Smitty", as Yowarsky
is known to his teammates, has been the utility man
of the Kentucky team—shifted to bolster sagging de-
fenses at various positions . . . May have found him-
self at tackle . . . Rougher and tougher than he seems
on the street, he can be expected to give both the com-
petition and opposition some trouble this year.

WENDELL VANCE . . . 6-4 . . . 200 . . . 23 . . .
Louisville, Ky. . . Sophomore . . . This former Lou-
isville Male star is being counted upon to develop into
a dangerous performer . . . Expected to see consider-
able service in relief roles this season while gaining ex-
perience . . . Played tackle on the UK freshman team
. . . Veteran of two years Navy service.

Dine In

The New

Lexington Room

of

The Kentuckian Hotel

A Complete Cuisine Including

Broiled Live Lobsters

Choice Steaks

Old Kentucky Ham

Southern Fried Chicken

MEET AFTER THE GAME IN

**Canary
Cottage**

AIR-CONDITIONED
FOR YOUR
COMFORT

128 E. MAIN

The South's Most Beautiful
New Cocktail Lounge . . .

also

Louisville (St. Matthews)

Indianapolis

and

French Village Louisville

Purcell's

Lexington's Most Progressive
Department Store

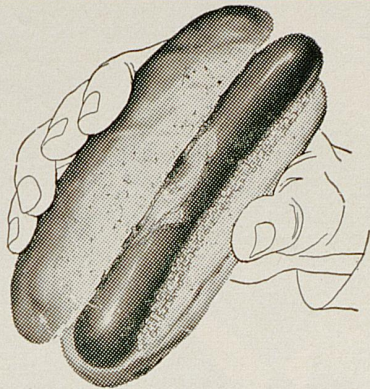
If You Prefer A Certain
Brand of Merchandise
You Are Almost Sure
To Find It At Purcell's

Fashionable Women

*Make Our Fashion Floor Their
Fashion Headquarters*

SCORES OVER STOLL FIELD PUBLIC - ADDRESS SYSTEM COME TO
YOU THROUGH THE COURTESY OF THE LEXINGTON NEWSPAPERS


ANOTHER SCORING COMBINATION!



Enjoy Armour Star Frankfurters while watching the Wildcats in action. They're sold exclusively at all home games of the University of Kentucky, and merit this exclusive privilege for one reason only — their quality and freshness.

And when shopping at your market too, ask for these delicious franks by name. Your family will like them.



ARMOUR 

Frankfurters

— a leader in America's finest line of sausage!



Bo Brown

"Please believe me, Dobson, this isn't night football—you've got your helmet on backwards!"

"The House of Spotswood"

IS PULLING FOR

Every Play to Click

SPOTSWOOD ADVERTISING HAS
"CLICKED" FOR THE
PAST 54 YEARS.

Spotswood Specialty Co., Inc.

Manufacturers of

Advertising Specialties

Calendars

Toys and Games

214-228 Jefferson — — Lexington, Ky.

FOR COMPLETE REPORTS ON THIS GAME AND OTHERS BEING PLAYED TODAY, READ THE SPORTS SECTION OF SUNDAY HERALD-LEADER

THE CITADEL HISTORY

Distinguished in military history, The Citadel was founded in 1842 and its students and graduates have bled and died in every war since. Some of the army's finest officers were Citadel graduates.

A battery of Citadel cadets, stationed on Morris Island at the entrance to Charleston Harbor, fired the first shots of the War Between the States. The battery chased from the harbor the Federal troop ship, Star of the West, when it tried to relieve a garrison at Fort Sumter. Men of The Citadel fired the last shots by an organized body of troops east of the Mississippi.

The Citadel's doors were closed during that war. It was then an academy and remained closed for a period of 20 years.

The College outgrew its old Marion Square facilities and in 1922 was moved to its present 78-acre site on the west bank of the beautiful Ashley river.

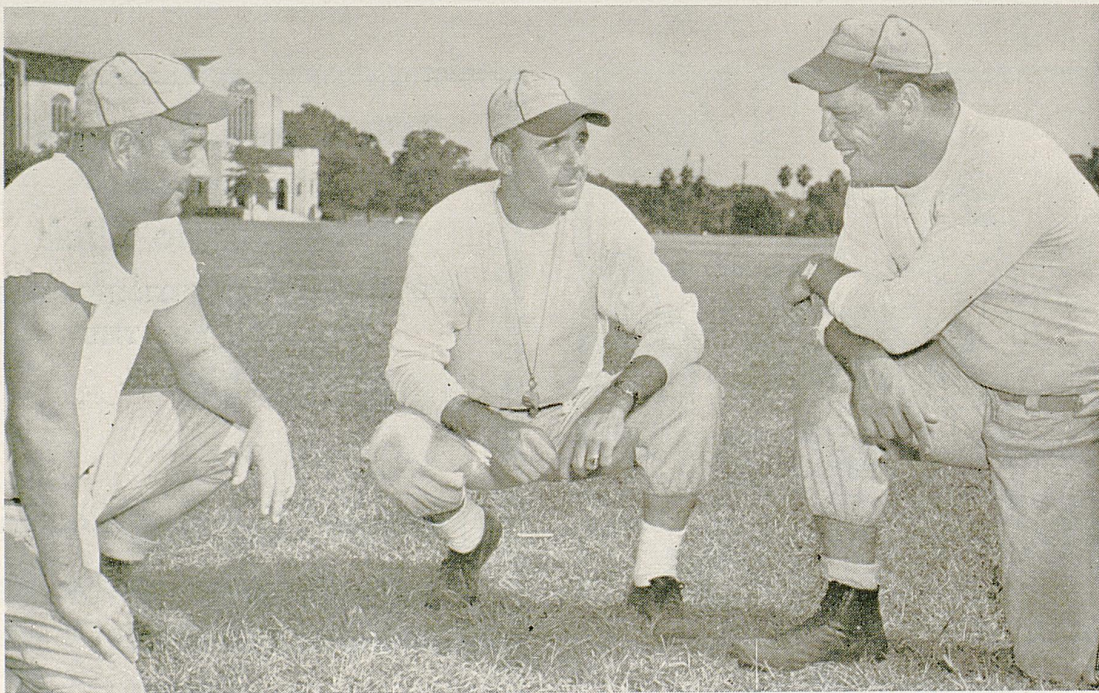
Rapid growth has occurred since 1932, when the student body numbered 500 students. In 1943 there were 2,000 cadets and during the 1948-49 term the total will approximate 2,500 cadets and veteran students.

General Charles P. Summerall, USA, retired, has been president of the college since 1931. He is one of the most distinguished generals in American history and before retiring was chief of staff, the highest rank attainable in the military service.



GENERAL CHARLES P. SUMMERALL, USA

THE CITADEL COACHING STAFF



Pictured above with two of his assistants (Coaches Ben Dobbs and Fred Land) is The Citadel's head football mentor and athletic director, J. Quinn Decker. A former Tennessee luminary and Centre College coach, Decker has been associated with the South Carolina Military school since 1946. He played fullback on one of Gen. Robert Neyland's great Tennessee teams with Dodd, McIver and Hackman. He coached at Central High school in Knoxville for three years after graduation in 1932 with such unusual success that he was called to Centre College as backfield coach. After three years in this capacity, he was made head football coach in 1938, and remained with the Kentucky school until leaving for the Army Air Force in 1942. In the service, Decker assumed charge of the Third Air Force team.

**SCORES OVER STOLL FIELD PUBLIC - ADDRESS SYSTEM COME TO
YOU THROUGH THE COURTESY OF THE LEXINGTON NEWSPAPERS**

THUMBNAIL SKETCHES

RIGHT ENDS

CHARLIE BRADSHAW . . . 6 . . . 175 . . . 26 . . . Montgomery, Ala. . . Senior . . . A three-letter football veteran at Kentucky. . . Expected to provide stiff opposition to anyone trying to move him from the right flank post . . . A probable starter this year . . . Makes up for lack of size with ability and spirit . . . Played center with Sidney Lanier High School team in Alabama . . . Saw service as T/Sgt. with the Marines in the South Pacific . . . Married.

AL BRUNO . . . 6-3 . . . 185 . . . 21 . . . West Chester, Pa. . . Sophomore . . . Served notice in Spring practice that he will battle for a starting assignment . . . Great pass-receiver who catches seemingly impossible balls . . . Has played in a defensive halfback position . . . Was a reserve forward with Kentucky's NCAA Champion basketballers last winter.

BOB MARTIN . . . 6-1 . . . 180 . . . 19 . . . Paducah, Ky. . . Sophomore . . . Up from last year's successful freshman team . . . Considered fine prospect by Kentucky coaches . . . Will be used in reserve roles to gain experience this year.

CHARLES McCLENDON . . . 6-1 . . . 187 . . . 20 . . . Lewisville, Ark. . . Sophomore . . . Sure to prove tough competition to both the opposition and his competition for a high place among end candidates . . . Will be used in relief roles this year . . . Did not play as UK freshman . . . Veteran of three years in Navy . . . Married.

DON FRAMPTON . . . 6-3 . . . 185 . . . 21 . . . Bradford, Pa. . . Sophomore . . . A very promising flankman who should hit his stride this season . . . Considered capable by his coaches . . . Horse, as he is nicknamed by teammates, may prove to be the dark horse in the right end race . . . As a schoolboy in Bradford, he was All-State in both basketball and football, and captained the track team.

CHARLEY BENTLEY . . . 6 . . . 195 . . . 25 . . . Gadsden, Ala. . . Senior . . . A three-letter veteran and former regular who has slipped with the influx of talented newcomers . . . His return to form this season would aid materially Kentucky's chances for successful season . . . Purple-heart veteran of 29 months Army service in the Pacific . . . Plans to coach after graduation . . . Married.

JOHN GRIGGS . . . 6-2 . . . 190 . . . 18 . . . Morganfield, Ky. . . Sophomore . . . Youngest man on the squad . . . Captained high school football team on which he played end and backfield for four years . . . Nicknamed "Spike" by teammates . . . Needs year of experience to develop.

QUARTERBACKS

BOB BEZUK . . . 5-8 . . . 150 . . . 20 . . . Ambridge, Pa. . . Sophomore . . . Smallest man on the Wildcat varsity . . . Diminutive Bob is literally hidden from the view of the opposition when he crouches behind man-mountain center Harry Ulinski, a fellow hometown . . . Lives up to the axiom that a little man must be twice as good as a good big man to make the football team . . . Broke leg in final Spring practice game but should be ready to go this Fall . . . Nicknamed "Rebel" by teammates . . . Played as UK freshman.

"There's a Dixie Dealer Near You"



Dixie Ice Cream Co., Inc.

Lexington, Ky.

FOR COMPLETE REPORTS ON THIS GAME AND OTHERS BEING PLAYED TODAY, READ THE SPORTS SECTION OF SUNDAY HERALD-LEADER

Capps Coach House

Restaurant

855 South Broadway

Cocktail Lounge

At Tattersalls

OUR SINCERE GOOD WISHES

To The Wildcats

Lexington Railway System, Inc.

Bus Service Throughout
Lexington and Suburbs

D. D. STEWART
President

THUMBNAIL SKETCHES

QUARTERBACKS

BABE PARILLI . . . 6-1 . . . 185 . . . 20 . . . Rochester, Pa. . . . Sophomore . . . Called the greatest backfield prospect since Ermal Allen . . . Tagged by Southern sportswriters as "the brass ring" of SEC sophomores . . . Much depends on the cool head and steady throwing arm of this key figure in Kentucky attack . . . Cinch to be number one field general . . . Triple threat performer — excellent passer, good kicker and better than average runner . . . If he can hold up under tough competition of league should be great performer . . . Played quarterback and fullback under Coach Mike Sebastian at Rochester High for three years . . . Has native ability and determination to make good . . . Starred with the UK freshman team last season . . . Plans now to go into pro baseball after graduation.

DOMINIC FUCCI . . . 5-11 . . . 175 . . . 21 . . . New Village, N. J. . . . Junior . . . Only letterman and sole upperclassman among QB candidates . . . Showed great improvement in Spring practice over last season and should see plenty of action this year . . . Well-liked and has confidence of teammates . . . Heaviest hitter on Wildcat baseball team (over .400) and made the first All-American team selected by Baseball Coaches Association.

KEN KNIGHT . . . 5-11 . . . 170 . . . 20 . . . Russellville, Ky. . . . Sophomore . . . Will be used in reserve roles this season to gain experience . . . Switched to quarterback in Spring practice . . . Played left half on UK freshman team last year and was a tailback on his high school team for four years.

PAUL JONES . . . 5-11 . . . 170 . . . 23 . . . Corbin, Ky. . . . A non-letterman veteran who may surprise . . . Played fullback in four years at Lynn Camp High school in Corbin . . . Was a halfback as U. K. freshman . . . Veteran of 18 months Navy service . . . Plans to coach following graduation.

LEFT HALFBACKS

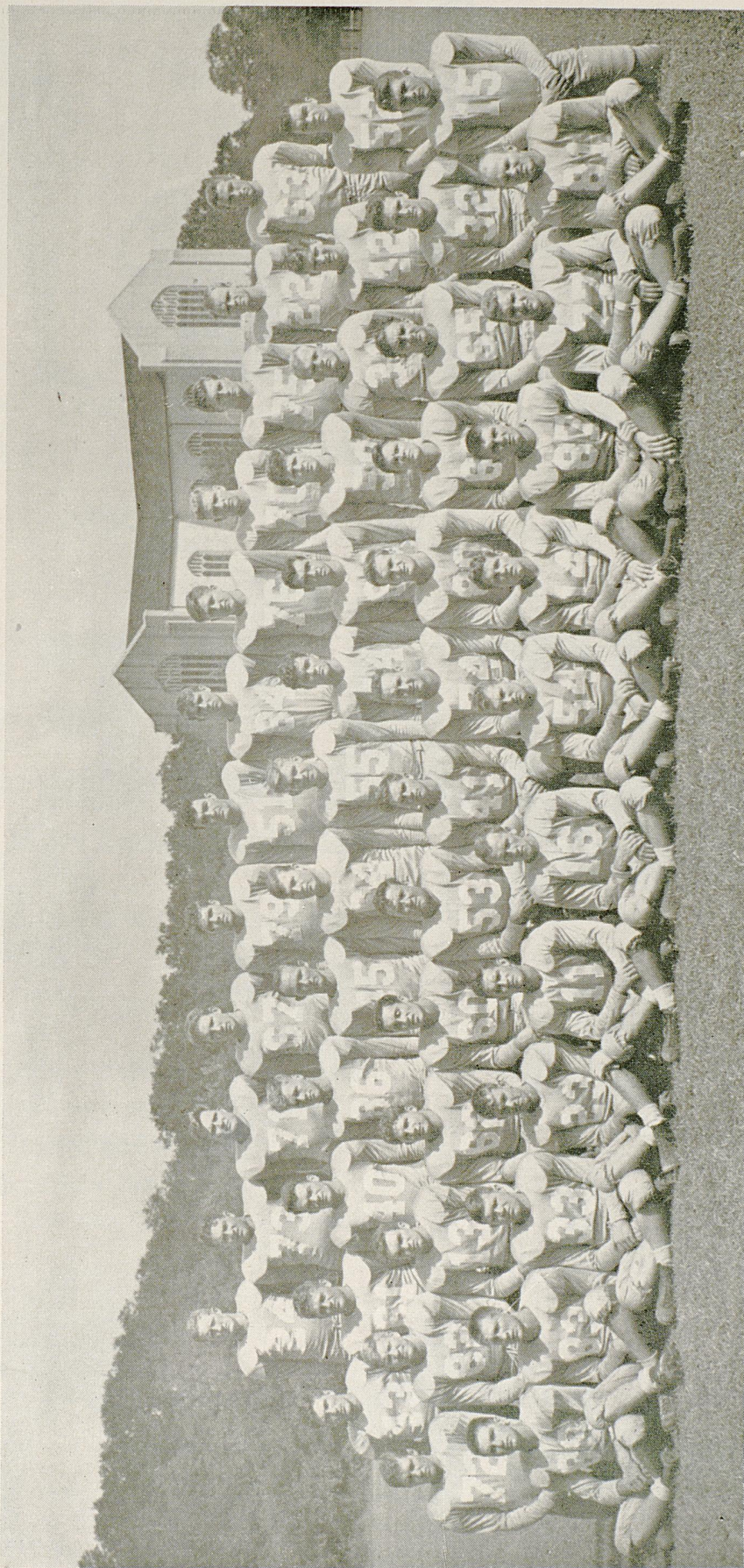
BILL BOLLER . . . 5-11 . . . 173 . . . 22 . . . Beaver Falls, Pa. . . . Senior . . . One of the squad's most powerful running backs . . . He's also a good passer . . . Regular most of last season . . . Earned letter as a freshman and lettered also in 1947 and 1948 . . . Will be hard-pressed for starting position this year by veteran Don Phelps . . . Plans to play pro football after graduation.

DON (DOPEY) PHELPS . . . 5-11 . . . 175 . . . 25 . . . Lexington, Ky. . . . Senior . . . Probably the most dangerous runner on the Wildcat team . . . As a freshman, he led the nation in kick-off and punt returns . . . Runs the century distance in under 10 seconds as a sprinter with the track team . . . His blazing burst of speed enables him to elude many would-be tacklers . . . Barring reversal of Spring practice form, Phelps may be expected to conclude his college days by hitting the stride predicted for him after his first season at Kentucky . . . Married and has a year-old son.

EMERY CLARK . . . 5-9 . . . 168 . . . 19 . . . Carlisle, Ky. . . . Sophomore . . . Considered promising prospect by coaching staff . . . Showed great potentialities as a halfback with UK freshman team last season . . . Played four years high school ball as a quarterback . . . The son of a farmer, he's majoring in Agriculture and does not plan to play pro ball after graduation.

SCORES OVER STOLL FIELD PUBLIC - ADDRESS SYSTEM COME TO
YOU THROUGH THE COURTESY OF THE LEXINGTON NEWSPAPERS

THE CITADEL SQUAD

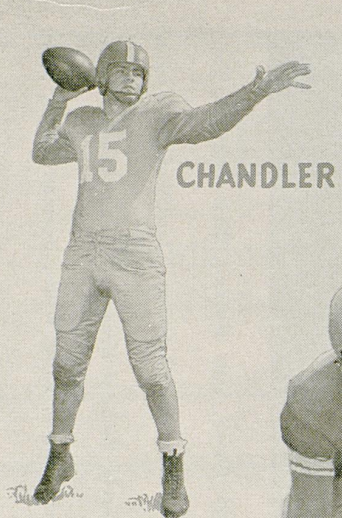


Bottom row, left to right, Walter Bogumil, William Ohlandt, Charles Fabian, Joseph Gregory, David Pigott, Sam Rubino, Dick Zelinski, Terry Britt, Robert McGinn and Jack Pickard.

Second row, left to right, Emerson Mange, Harmon Brownlow, Jack McConnell, Albert Malacarne, Robert Boyd, James Bailey, Elvin Kennedy, Clark Webster, Eugene Foxworth, Amos Fox, Eugene Hill, Robert Gunning and Jack Chandler.

Third row, left to right, Sam Savas, David Barnett, Walter Brugh, Ray Young, Robert Carter, Don Davis, William Leach, Richard Brewer, William Crosby, James Doss, Albert Bohlen, Luther Dunfee and Dale Matthews.

Fourth row, left to right, Curtis Bozeman, Robert Redditt, James Whelan, Joseph Bost, James Fitzgerald, Rufus Haltiwanger, King Willis, Norman Clyne, Jerry DeLuca, Boncil Dyches, Lucian Pinckney and Jack Huddle.



CHANDLER



OHLANDT



ZELINSKI



MALACARNE



DOSS

THE CITADEL



BOZEMAN



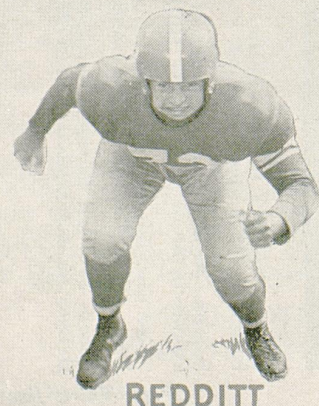
HUDDLE



BRUGH



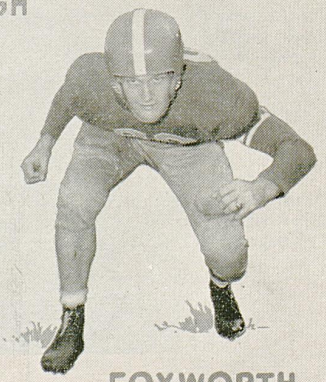
PINCKNEY



REDDITT



MCGINN



FOXWORTH

Send Your Dry Cleaning With Your Laundry

TO

Croppers Laundry

FOUR LOCATIONS

105 Walton Ave.

241 E. Short St.

529 S. Lime

803 Euclid

Phone 210

MEMBER OF AMERICAN INSTITUTE
OF LAUNDERING

Office Equipment Co., Inc.

Complete Office Outfitters

Also Complete Line of

School Furniture and Supplies
Sound and Silent Movie Projectors
Films and Supplies
Jam Handy Film Strips
Slide and Film Strip Projectors

Louisville, Ky., 117-123 S. Fourth
Wabash 5161

Lexington, Ky., 128 West Short St.
Phones 3372 - 3373

Owensboro, Ky.

*After the last whistle blows
Everyone goes*

TO

Jerry's

357 S. Lime Opposite Patterson Hall

*Home of the
Proud Hamburger*

"Buy A Bag of 'em"

FOR COMPLETE REPORTS ON THIS GAME AND OTHERS BEING PLAYED
TODAY, READ THE SPORTS SECTION OF SUNDAY HERALD-LEADER

THUMBNAIL SKETCHES

LEFT HALFBACKS

BOBBY BROOKS . . . 5-11 . . . 170 . . . 21 . . . Gary, Ind. . . . Sophomore . . . Chiefly a specialist . . . Kicks extra points after touchdown—with an educated toe . . . Other duties are limited . . . Potentially a good offensive back . . . Runs in a gliding manner that makes him elusive to tacklers . . . All-State half-back with Lew Wallace High in Gary.

RIGHT HALFBACKS

JIM HOWE . . . 6-2 . . . 178 . . . 22 . . . Fort Thomas, Ky. . . . Slow afoot but elusive . . . Uncanny at picking out holes in an opponent's forward wall . . . Has dangerous change of pace in open field . . . A good mudder — watch him on a rainy day . . . Great clutch player . . . Expected to draw down starting berth this season . . . Lettered in 1944 before going into the Army and picked up two more K's in 1947 and '48 . . . Married.

WILBUR (SHORTY) JAMERSON . . . 5-9 . . . 168 . . . 20 . . . Henderson, Ky. . . . Junior . . . An outstanding back . . . Powerful runner with tricky change of pace . . . Probably will alternate with Howe as a regular . . . Another exception to the age-old coaching rule that you have to be big to be a good football player . . . Won a letter as a freshman and lettered again last year . . . Good defensive secondary man.

DICK MARTIN . . . 6 . . . 180 . . . 20 . . . Chicago, Ill. . . . Junior . . . One of the best defensive halfbacks on the squad and equally adept on offense . . . A tricky runner sure to see plenty of action . . . Might be the surprise package Kentucky coaches are looking for in the backfield.

CLIFF LAWSON . . . 6 . . . 170 . . . 19 . . . Pocahontas, Ark. . . . Sophomore . . . Showed up well with freshman team last Fall . . . Counted on to develop as first-line replacement next year . . . Will be used in reserve roles this season . . . Captained high school team . . . May surprise by giving regulars stiff competition for starting berth.

ED HAMILTON . . . 5-11 . . . 170 . . . 21 . . . Louisville, Ky. . . . Sophomore . . . Coaches are high on the prospects of this boy . . . He'll see only relief service this year while gaining experience.

JOHN COBB . . . 5-10 . . . 170 . . . 20 . . . Mitchell, S. D. . . . Sophomore . . . Don't sell this boy short . . . Was one of the most dangerous runners on last season's freshman team . . . Failed to show great form in Spring practice, but may develop into leading contender . . . Potentially a consistent ground gainer.

FULLBACKS

BILL LESKOVAR . . . 6-2 . . . 190 . . . 20 . . . Fairmont, W. Va. . . . Sophomore . . . Considered one of West Virginia's top schoolboy prospects when he came to Kentucky in 1946 . . . Earned letter as a freshman . . . Early season injuries have prevented his development as expected, but he shows promise of hitting his stride this year . . . A powerful line plunger.

CLAYTON WEBB . . . 6 . . . 185 . . . 20 . . . St. Albans, W. Va. . . . Junior . . . A veteran performer who may reach his peak this season . . . Lettered last year . . . Will be used extensively in relief roles this year . . . One of the team's best punters . . . As the number two kicker last year he had an average of 33.4 yards per try.

STRUCK CONSTRUCTION COMPANY

INCORPORATED

Building

Construction

General Contractors

Memorial Coliseum

Athletic Equipment

At School Prices

SEE ME FOR

Rawlings Athletics Equipment

Wilson Sporting Goods

Converse Basketball Shoes

Johnson Seahorse Motors



GENE MYERS

Automatic Equipment Co.

Sports Dept.

230 E. MAIN ST., LEXINGTON, KY.

SCORES OVER STOLL FIELD PUBLIC - ADDRESS SYSTEM COME TO
YOU THROUGH THE COURTESY OF THE LEXINGTON NEWSPAPERS

The Lafayette Hotel

Extends a Cordial Welcome and an Invitation to the Football Fans to meet with us after the Games. Renew old Friendships, greet new friends, and enjoy the spirit of good fellowship that abounds.

Compliments

OF

Ades-Lexington Dry Goods Co.

Incorporated

249 E. Main Street

Lexington, Ky.

Best of Luck to the Wildcats

Hughes
LEXINGTON, KY.

ICE CREAM

High and Woodland

THUMBNAIL SKETCHES

FULLBACKS

RALPH GENITO . . . 5-11 . . . 165 . . . 25 . . . Duquesne, Pa. . . . Senior . . . Lightest of the fullback candidates . . . Makes up for lack of weight in speed . . . Sprinter on the track team . . . A fast moving back who takes every advantage of the slightest opening . . . Was the team's leading ground gainer last year in both rushing and kickoff returns . . . He's a five-battle-star veteran of three years' Navy service in the Pacific.

LEE TRUMAN . . . 6 . . . 185 . . . 21 . . . Owensboro, Ky. . . . Senior . . . One of the team's best defensive backs . . . His experience and ability make him leading candidate for starting fullback post . . . A power runner . . . Dangerous near the opposition goal line . . . He's a second cousin to Harry Truman and met the President during a campaign stop in Lexington last Fall.

HAROLD WOODDELL . . . 5-11 . . . 182 . . . 20 . . . Beckley, W. Va. . . . Junior . . . Expected to be an improved player this season . . . His experience will be relied upon heavily . . . Probably will be used primarily as a substitute.

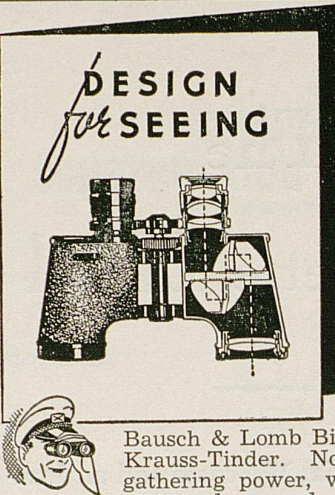
ED KOZLOWSKI . . . 5-9 . . . 181 . . . 20 . . . Philadelphia, Pa. . . . Sophomore . . . Playing behind five lettermen, Kozlowski will see only limited action this season but will be gaining experience . . . He's figured to be a promising back and will be needed next season . . . Played fullback three years with West Philadelphia High . . . Made All-Public-League team.

FOR COMPLETE REPORTS ON THIS GAME AND OTHERS BEING PLAYED TODAY, READ THE SPORTS SECTION OF SUNDAY HERALD-LEADER

Kentucky's 1948 Record

Ky.	Team	Opp.
48	Xavier (Ohio)	7
7	Mississippi	20
12	Georgia	35
7	Vanderbilt	26
25	Marquette	0
28	Cincinnati	7
13	Villanova	13
34	Florida	15
0	Tennessee	0
25	Miami (Fla.)	5
199		128
<i>Won 5 Lost 3 Tied 2</i>		

DESIGN
for **SEEING**



DO YOU

Motor?

Travel?

Attend football games and other athletic events? Then examine a Bausch & Lomb Binocular at Tinder-Krauss-Tinder. Note its great light gathering power, wide field, ease of use, and rugged construction. Enthusiastically recommended by sportsmen, Army and Navy officers, aviators and other users as "The World's Best By Any Test."

See This Marvelous Glass At

Tinder-Krauss-Tinder

Opticians — Photographic Supplies

145 N. Upper Street
Lexington

Athletic Equipment for Every Sport

Games for every occasion—Toys for every age
 Distributors for MacGregor-Goldsmith
 Write for Catalogue and prices

The Smith-Watkins Co., Inc.

236 E. MAIN STREET

LEXINGTON, KENTUCKY

GEO. H. ROMMEL COMPANY

INCORPORATED

GENERAL CONTRACTORS

FOR

Student Union Building and New Service Building

LOUISVILLE 4, KENTUCKY

SCORES OVER STOLL FIELD PUBLIC - ADDRESS SYSTEM COME TO YOU THROUGH THE COURTESY OF THE LEXINGTON NEWSPAPERS

Everything in Sporting Goods

"LEXINGTON'S EXCLUSIVE SPORTING GOODS STORE"

FOOTBALL

BASEBALL

BASKETBALL

TROPHIES

TENNIS -- GOLF

ARCHERY

FISHING TACKLE

GUNS — AMMUNITION

EVINRUDE MOTORS

DEALERS FOR

Spalding

MacGregor

Converse Shoes

Imperial Sweaters

B. & W. Sporting Goods

BOB WEST, JR. — Owner

112 N. Upper St.

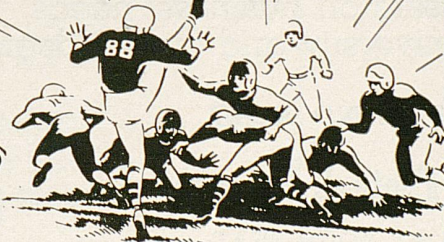
PHONE 3443
DIAL 2-5825

Lexington, Ky.

Ashland



ANOTHER *Ashland*
SERVICE, FOLKS!



AGAIN OFFERS A
FALL FEAST FOR
FOOTBALL FANS!

1. PLAY-BY-PLAY ACCOUNT
OF ALL WILDCAT GAMES
OVER ASHLAND FLYING
OCTANES NETWORK.

2. AUTOGRAPHED PICTURE
OF WILDCAT TEAM
FREE AT *Ashland*
STATIONS.



FOR COMPLETE REPORTS ON THIS GAME AND OTHERS BEING PLAYED
TODAY, READ THE SPORTS SECTION OF SUNDAY HERALD-LEADER



Football Fans

... PATRONIZE ...

THE

Wildcats'

Supporters

Public-spirited merchants and commercial establishments in nearly every phase of business are actively supporting the fighting Kentucky Wildcats by advertising in this game program.

Take the time now or after the game to browse through their attractive advertisements which appear throughout this book. Remember and patronize those who realize the value of a great state university and an equally-great football team.

When you make a purchase or have occasion to contact these advertisers on business needs, you too are supporting the University and the Wildcats.

BUY AND READ

The Official Kentucky Football Program

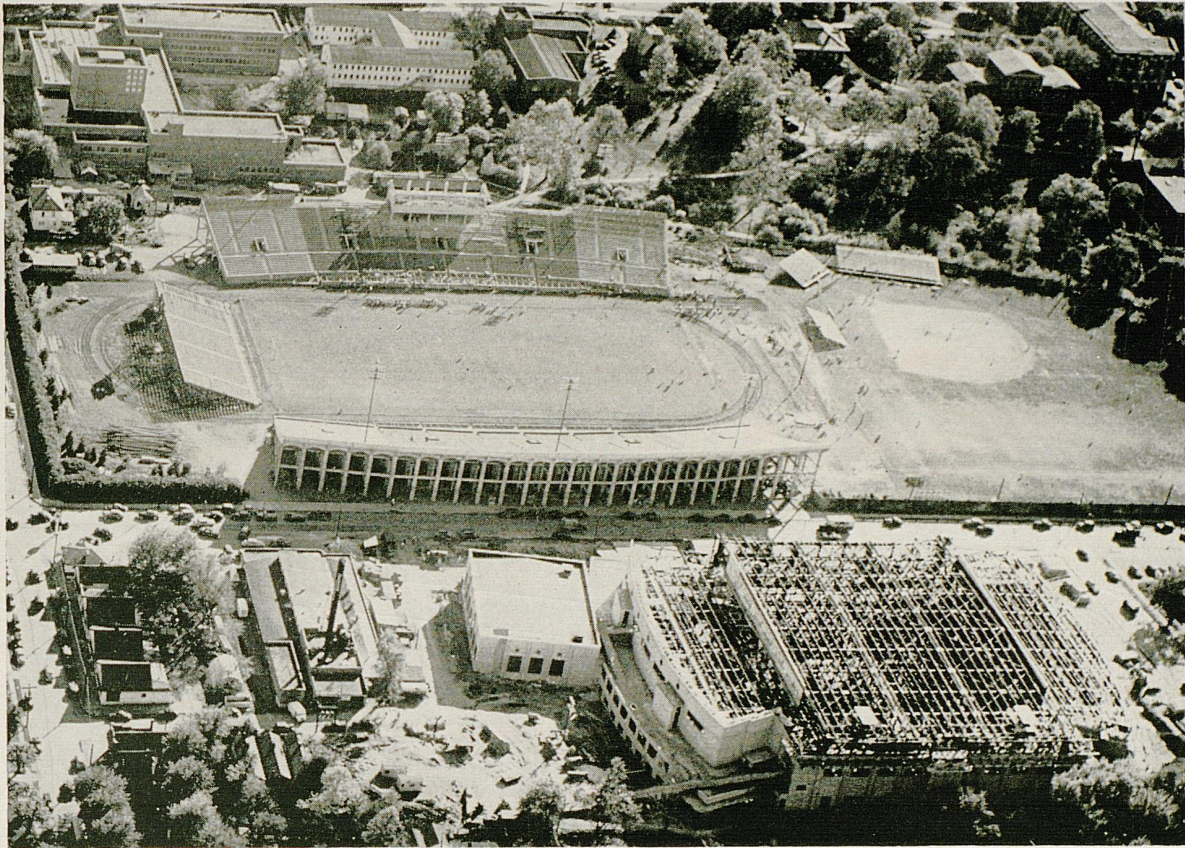
TWENTY-FIVE CENTS AT YOUR SEAT
FROM THE CONVENIENT USHER

●
*"Kentucky's Best
Sports Advertising Medium"*



SCORES OVER STOLL FIELD PUBLIC - ADDRESS SYSTEM COME TO
YOU THROUGH THE COURTESY OF THE LEXINGTON NEWSPAPERS

AERIAL VIEW OF U. K's ATHLETIC PLANT EXPANSION



—Lexington HERALD Photo

Construction that is expanding University of Kentucky's athletic facilities into one of the finest plants in the country is shown in the above aerial view progress shot taken this Spring by Lexington Herald Photographer Ed Weddle. Standing out clearly in the middle of the photograph is McLean Stadium on Stoll Field, which at this time was in the process of being enlarged to its present seating capacity of 35,500. In the lower right corner of this picture, the University's new \$4,000,000 Memorial Coliseum is shown at a stage when the outer shell of the huge structure is nearing completion. The combination auditorium and fieldhouse will be the new home of the Department of Athletics and is expected to be ready for occupancy by late February. The NCAA Champion basketball players may play the final few games of the 1950 schedule in the building.

FRESHMAN SCHEDULE

1949

October 8

Kentucky vs Tennessee
Kingsport, Tennessee

October 15

Kentucky vs Vanderbilt
Nashville

October 28

Kentucky vs Cincinnati
Lexington

The Record of Paul Bryant As A Head Coach

			Won	Lost	Tied
Head Coach	Maryland	1945	6	2	1
Head Coach	Kentucky	1946	7	3	0
Head Coach	Kentucky	1947	8	3	0
Head Coach	Kentucky	1948	5	3	2
			26	11	3

FOR COMPLETE REPORTS ON THIS GAME AND OTHERS BEING PLAYED TODAY, READ THE SPORTS SECTION OF SUNDAY HERALD-LEADER

An Invitation To Dance!

Friday
Saturday

Dave Parry

.. his Piano and .. his Orchestra

Couples Only

the Parade

RAY McKINLEY
Friday, November 4

of Name Bands

Casino and Clubhouse Available for Parties

JOYLAND CASINO



Bob Brown

"Sweeney only plays on rainy days. He's a mudder!"

SCORES OVER STOLL FIELD PUBLIC - ADDRESS SYSTEM COME TO YOU THROUGH THE COURTESY OF THE LEXINGTON NEWSPAPERS

Page Forty-four

TAYLOR TIRE CO.

Incorporated

Tires — Batteries — Brakes — Clutch
Starter — Lights — Ignition
Wheel Alignment



Household Appliances

Sales & Service

— Phone 2030 —

24 Hour Service Vine at S. Eastern



GOLD CUP
REGATTA



U. S. OLYMPIC
COMMITTEE



THOMPSON
TROPHY AIR RACE



NATIONAL
HORSESHOW



CHAMPIONSHIP
TRACK MEETS



INTERCOLLEGIATE
SPORTS



CHAMPIONSHIP
SWIMMING

Official Watch

University of Kentucky vs. The Citadel

Longines

The World's Most Honored Watch

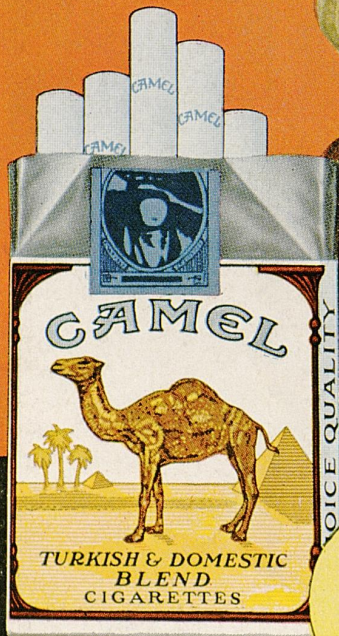
*Central Kentucky's Most Complete Selection
of Longines Wittnauer Watches at all times*

JAYS

in the Phoenix Building on South Lime



*So Mild-
and they
Taste
so good!*



Camels