

4391

Population, 11,000. Prev. Winds S.W.  
WATER FACILITIES City Water Works, Reservoir, 1 Million Galls. Capacity, Elevation 232' above river and 135' above cor. of Main and State St. 18 Miles of Water Pipes, 110 Hydrants, Average Pressure 75 lbs per Sq. Inch.

FIRE DEPARTMENT Volunteer, Men paid only for service rendered, 30 Regular Men, 10 Extras, 4-Hose Carts, 3000' 2 1/2" Hose in good condition, 1 Hook & Ladder Truck, 100' of Ladders.

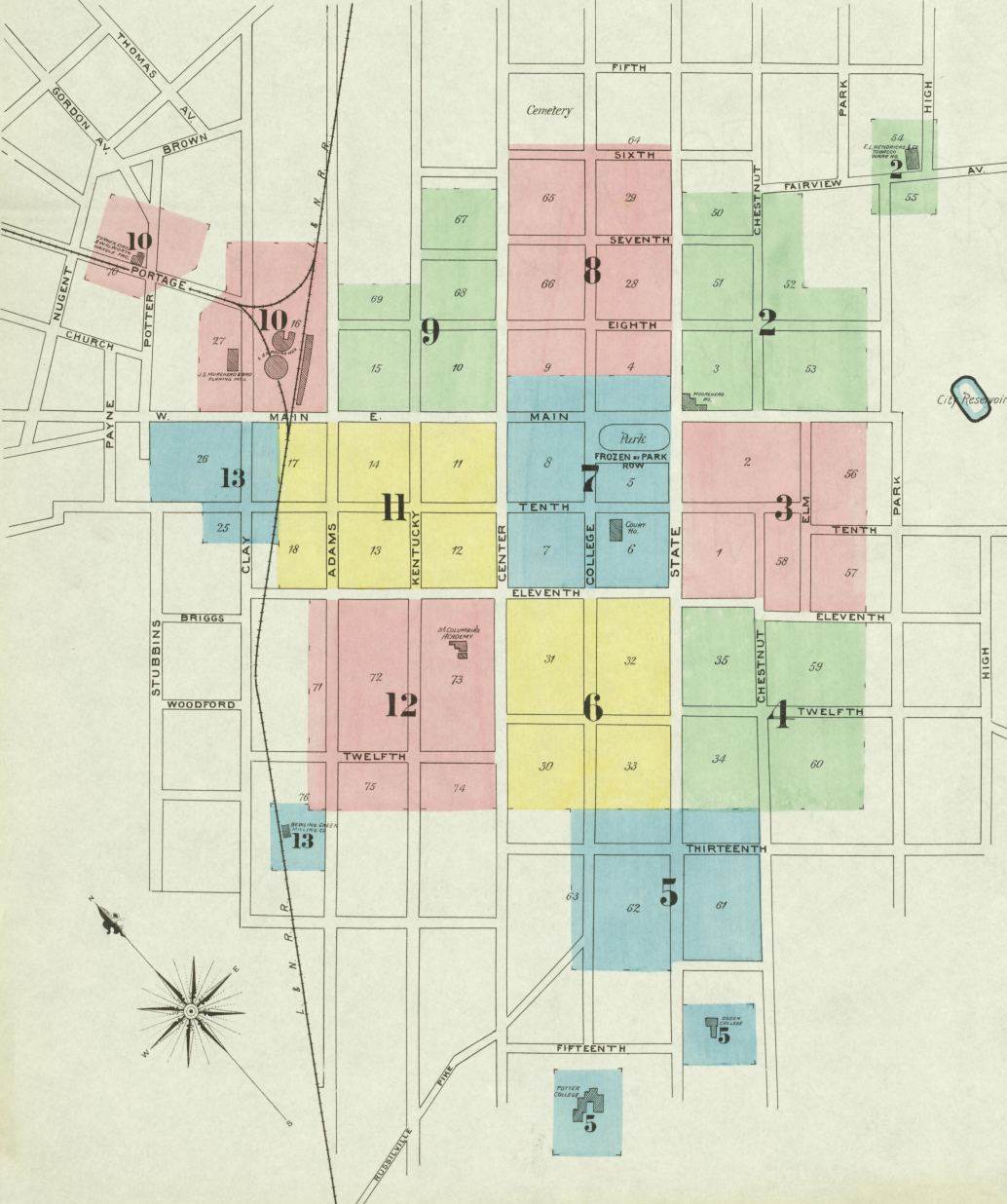
Examined and approved  
John Smith Secy Local Board  
Chas. Dillard  
Chas. Hayden  
Smith & Herdman  
B. H. King & Co  
J. H. Jones  
J. A. Porter & Co  
J. S. Shepard  
A. A. Coakley & Son

KEY  
11 FIRE WALL 8 IN. AS ROOF  
12  
13  
14  
15  
16  
17  
18  
19  
20  
21  
22  
23  
24  
25  
26  
27  
28  
29  
30  
31  
32  
33  
34  
35  
36  
37  
38  
39  
40  
41  
42  
43  
44  
45  
46  
47  
48  
49  
50  
51  
52  
53  
54  
55  
56  
57  
58  
59  
60  
61  
62  
63  
64  
65  
66  
67  
68  
69  
70  
71  
72  
73  
74  
75  
76  
77  
78  
79  
80  
81  
82  
83  
84  
85  
86  
87  
88  
89  
90  
91  
92  
93  
94  
95  
96  
97  
98  
99  
100

# Insurance Maps of BOWLING GREEN KENTUCKY

Sanborn & Co. Limited  
MAP  
TERRIS  
SCALE 50 FT. TO AN INCH  
115 BROADWAY NEW YORK  
Dec. 1895

Copyright, 1896 by the Sanborn-Terris Map Co. Limited.



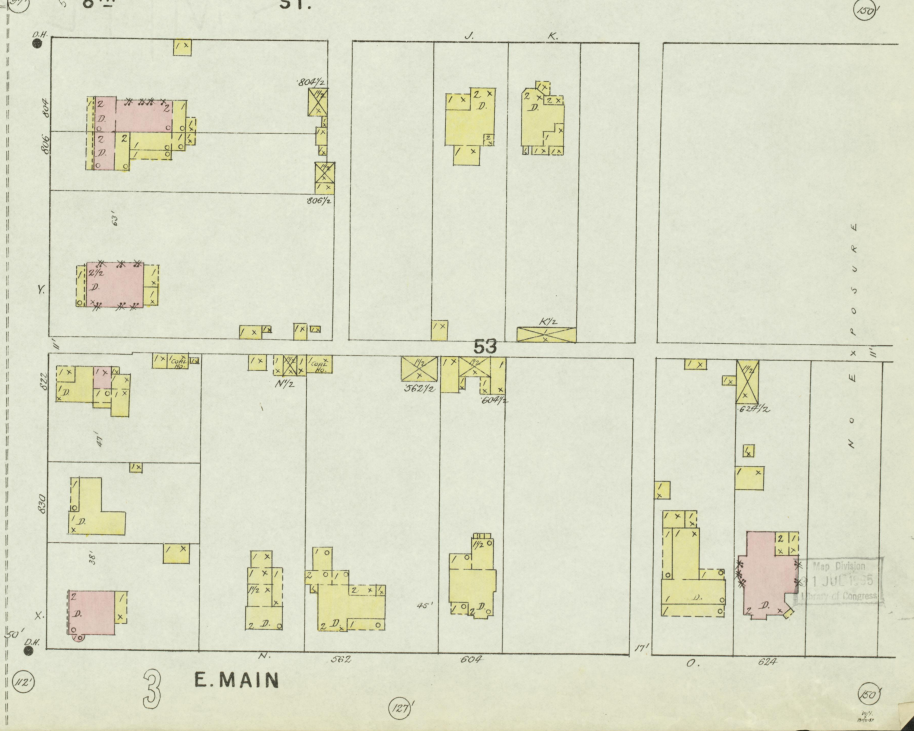
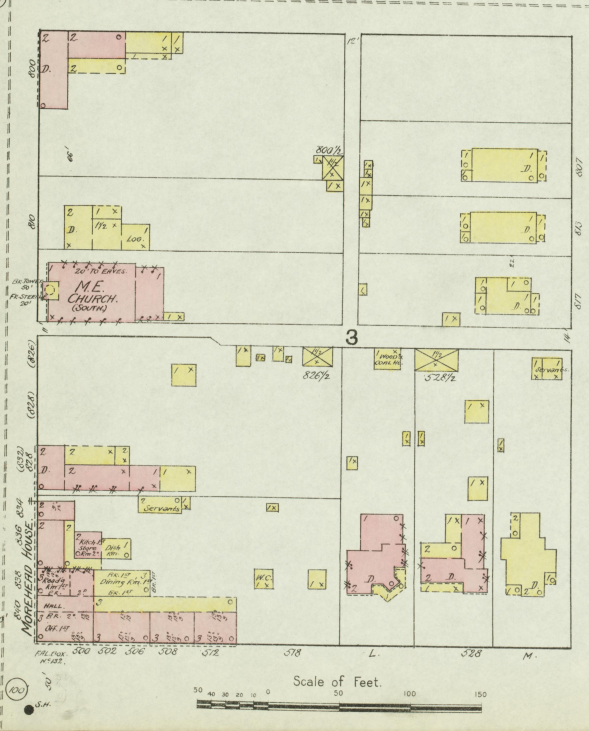
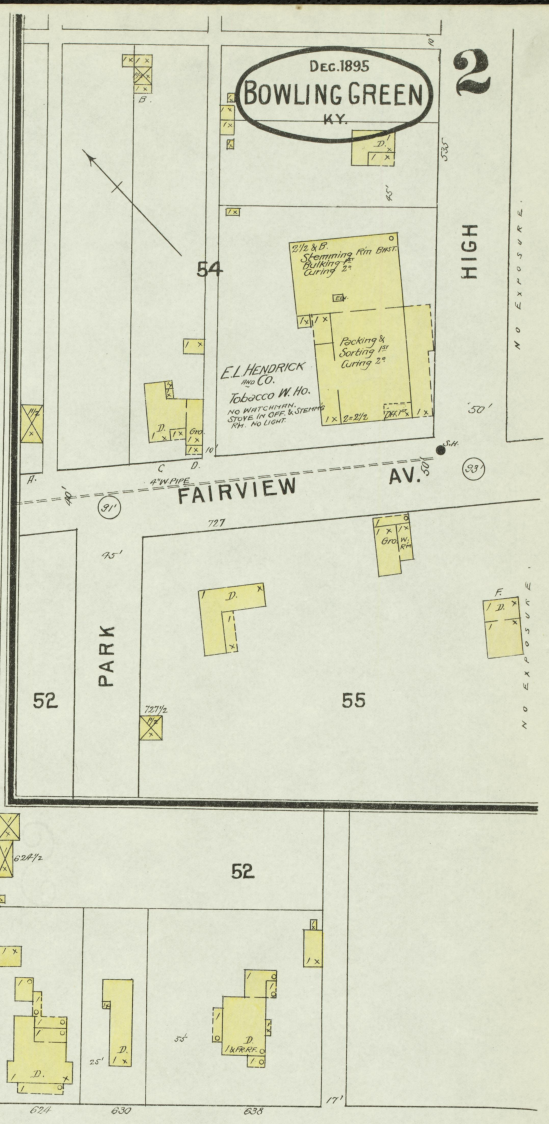
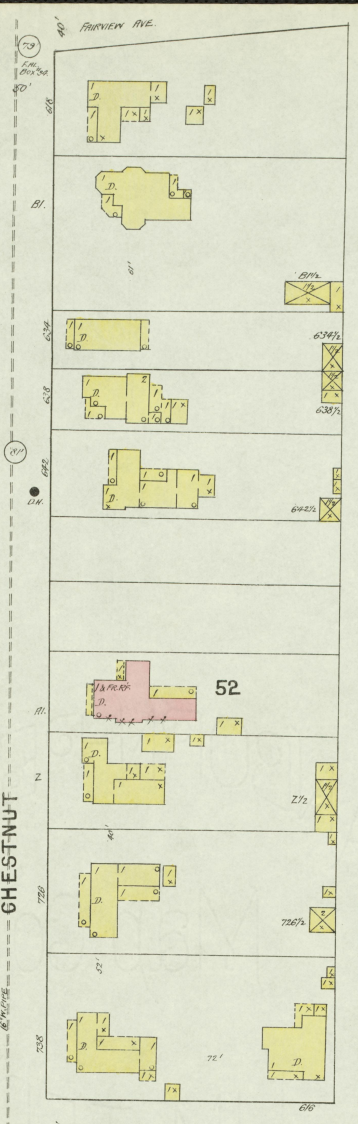
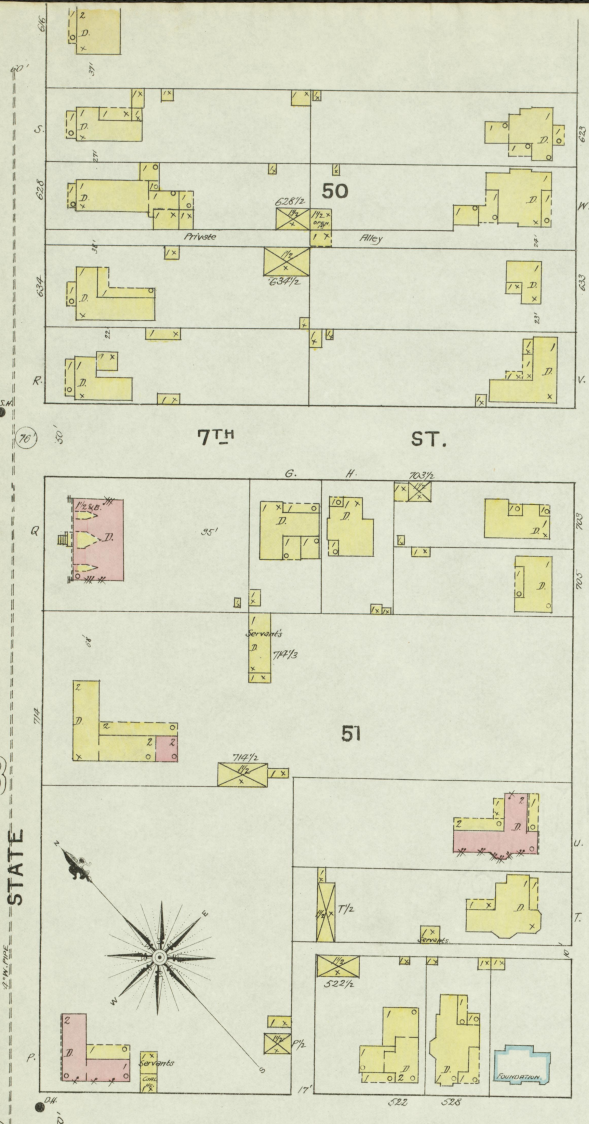
## INDEX.

STREETS.		INDEX	
STREET	NO.	STREET	NO.
Adams	625-843	Baptist Church	7
"	712-840	Bareley, J. W., Carriage Shop	7
"	900-1041	Blake & Son, Bottling Works	9
"	1100-1219	Bowling Green Business College	6
Center	536-820	" " " " " " " " " " " "	13
"	817-841	" " " " " " " " " " " "	9
"	825-1040	" " " " " " " " " " " "	13
"	901-1041	" " " " " " " " " " " "	13
"	1106-1248	" " " " " " " " " " " "	13
"	1101-1245	" " " " " " " " " " " "	11
Chestnut	616-835	Brown & Colburn, Machine Shop	11
"	900-1055	" " " " " " " " " " " "	13
"	1100-1256	" " " " " " " " " " " "	13
"	1237-1355	" " " " " " " " " " " "	13
Clay	100-165	" " " " " " " " " " " "	10
"	300-421	" " " " " " " " " " " "	7
"	535-824	" " " " " " " " " " " "	13
"	825-1041	" " " " " " " " " " " "	7
"	1100-1255	" " " " " " " " " " " "	6
"	1256-1345	" " " " " " " " " " " "	5
Eighth	100-239	Dantry, W., Lumber Yard	6
"	300-439	" " " " " " " " " " " "	8
"	500-647	" " " " " " " " " " " "	2
Eleventh	112-249	Episcopal Church	8
"	312-541	" " " " " " " " " " " "	10
"	300-438	" " " " " " " " " " " "	12
"	301-435	" " " " " " " " " " " "	6
"	500-654	" " " " " " " " " " " "	9
"	501-655	" " " " " " " " " " " "	4
"	900-1055	" " " " " " " " " " " "	3
Fairview Ave.	714-738	" " " " " " " " " " " "	2
Fourth	500-639	" " " " " " " " " " " "	5
Frozen Row	112-249	" " " " " " " " " " " "	10
High	530-545	" " " " " " " " " " " "	2
Kentucky	615-842	" " " " " " " " " " " "	11
"	900-1041	" " " " " " " " " " " "	10
"	1100-1237	" " " " " " " " " " " "	12
Main, E.	7-541	" " " " " " " " " " " "	11
"	100-240	" " " " " " " " " " " "	11
"	300-449	" " " " " " " " " " " "	7
"	300-436	" " " " " " " " " " " "	7
"	501-635	" " " " " " " " " " " "	9
"	1-141	" " " " " " " " " " " "	15
"	2-132	" " " " " " " " " " " "	10
Park Row	124-239	" " " " " " " " " " " "	7
Portage	300-406	" " " " " " " " " " " "	13
"	near Portage	" " " " " " " " " " " "	7
Seventh	200-235	" " " " " " " " " " " "	9
"	300-445	" " " " " " " " " " " "	8
"	500-535	" " " " " " " " " " " "	2
Sixth	300-445	" " " " " " " " " " " "	8
State	530-823	" " " " " " " " " " " "	8
"	616-840	" " " " " " " " " " " "	8
"	825-1037	" " " " " " " " " " " "	7
"	900-1045	" " " " " " " " " " " "	5
"	1100-1236	" " " " " " " " " " " "	4
"	1101-1255	" " " " " " " " " " " "	6
"	1257-1360	" " " " " " " " " " " "	6
Tenth	1-241	" " " " " " " " " " " "	11
"	300-439	" " " " " " " " " " " "	7
"	500-631	" " " " " " " " " " " "	3
"	1-144	" " " " " " " " " " " "	13
"	325-540	" " " " " " " " " " " "	5
Thirteenth	111-249	" " " " " " " " " " " "	12
"	300-437	" " " " " " " " " " " "	6
"	500-655	" " " " " " " " " " " "	4
Twelfth	300-437	" " " " " " " " " " " "	6
"	500-655	" " " " " " " " " " " "	4
Fifteenth	1-241	" " " " " " " " " " " "	11
"	300-439	" " " " " " " " " " " "	7
"	500-631	" " " " " " " " " " " "	3
"	1-144	" " " " " " " " " " " "	13
"	325-540	" " " " " " " " " " " "	5
"	111-249	" " " " " " " " " " " "	12
"	300-437	" " " " " " " " " " " "	6
"	500-655	" " " " " " " " " " " "	4

SPECIALS.  
A Adventist Church, 11  
\* Indicates only one side of Street shown.

Map Edition  
31 JUL 1895  
Office of Company







CHESTNUT ST. 2

3

E. MAIN

Dec 1895  
**BOWLING GREEN**  
KY.

56

10<sup>TH</sup> ST.

ELM

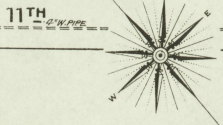
10<sup>TH</sup> ST.

ST.

58

57

O.H. BOLDWIN  
Sole Stockless



Scale of Feet.

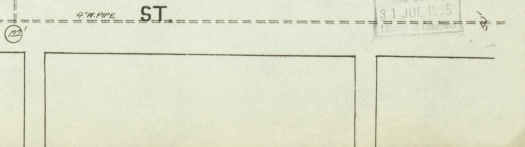
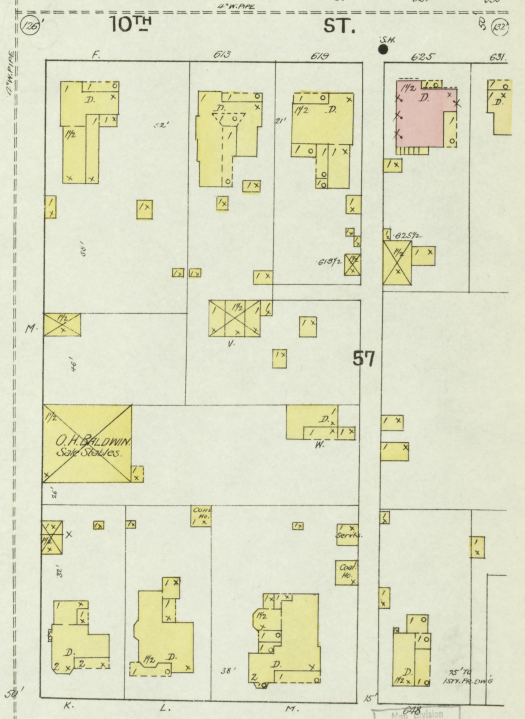
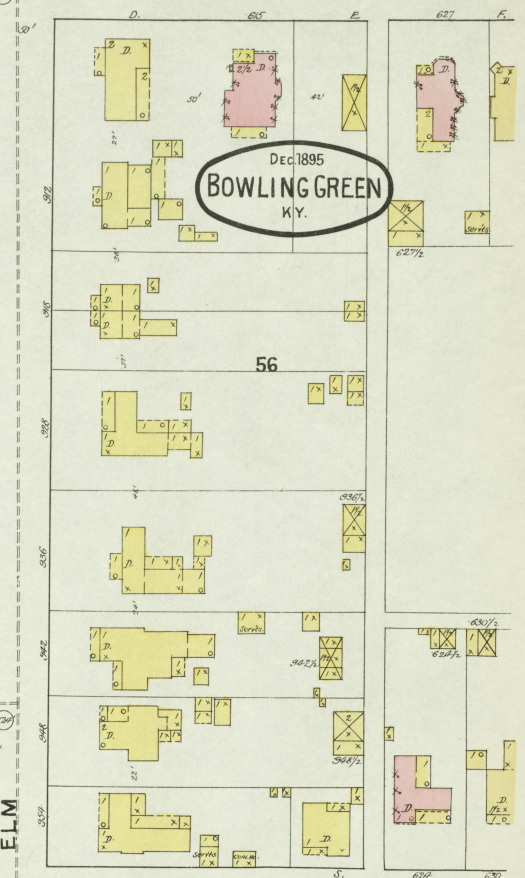
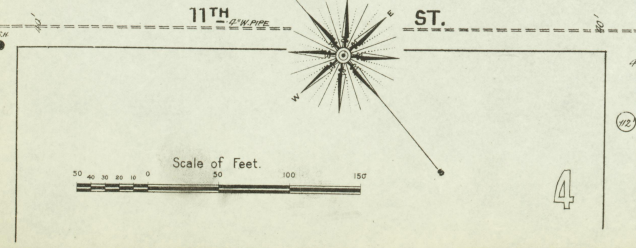
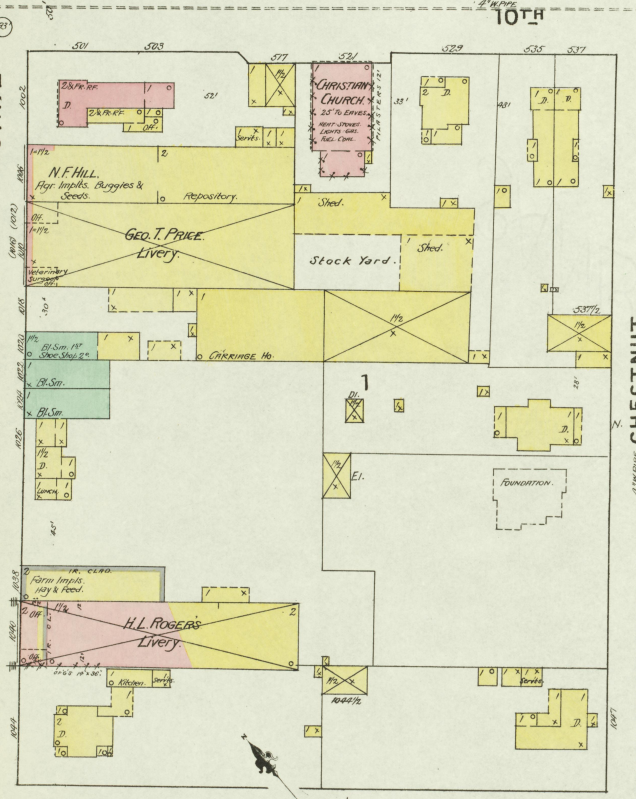
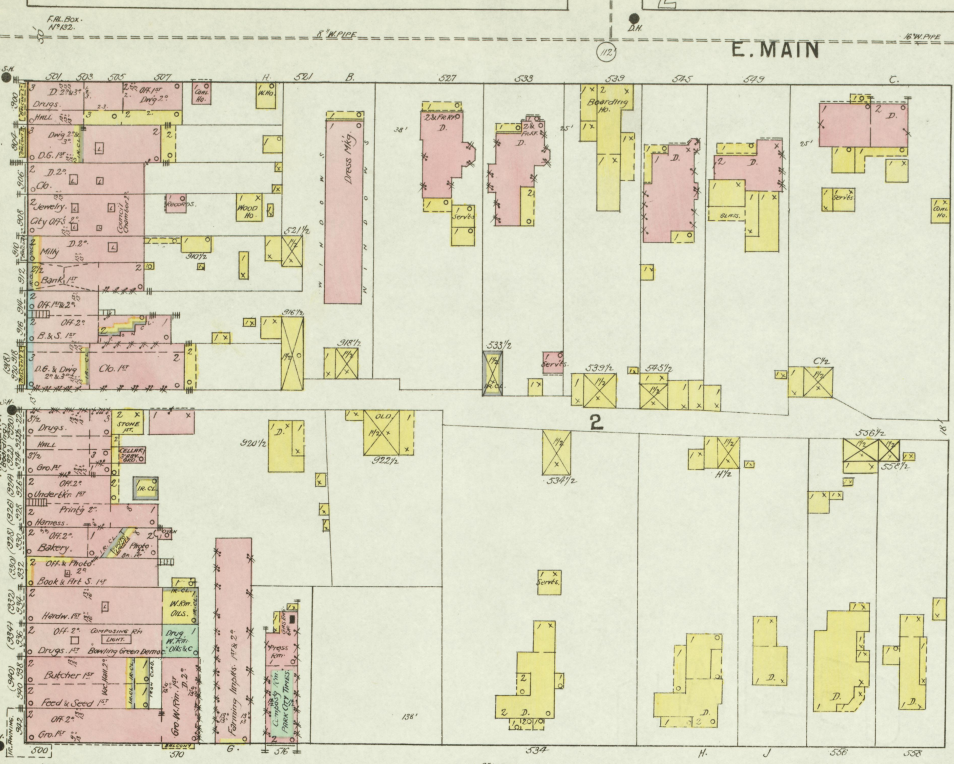
4

64

7

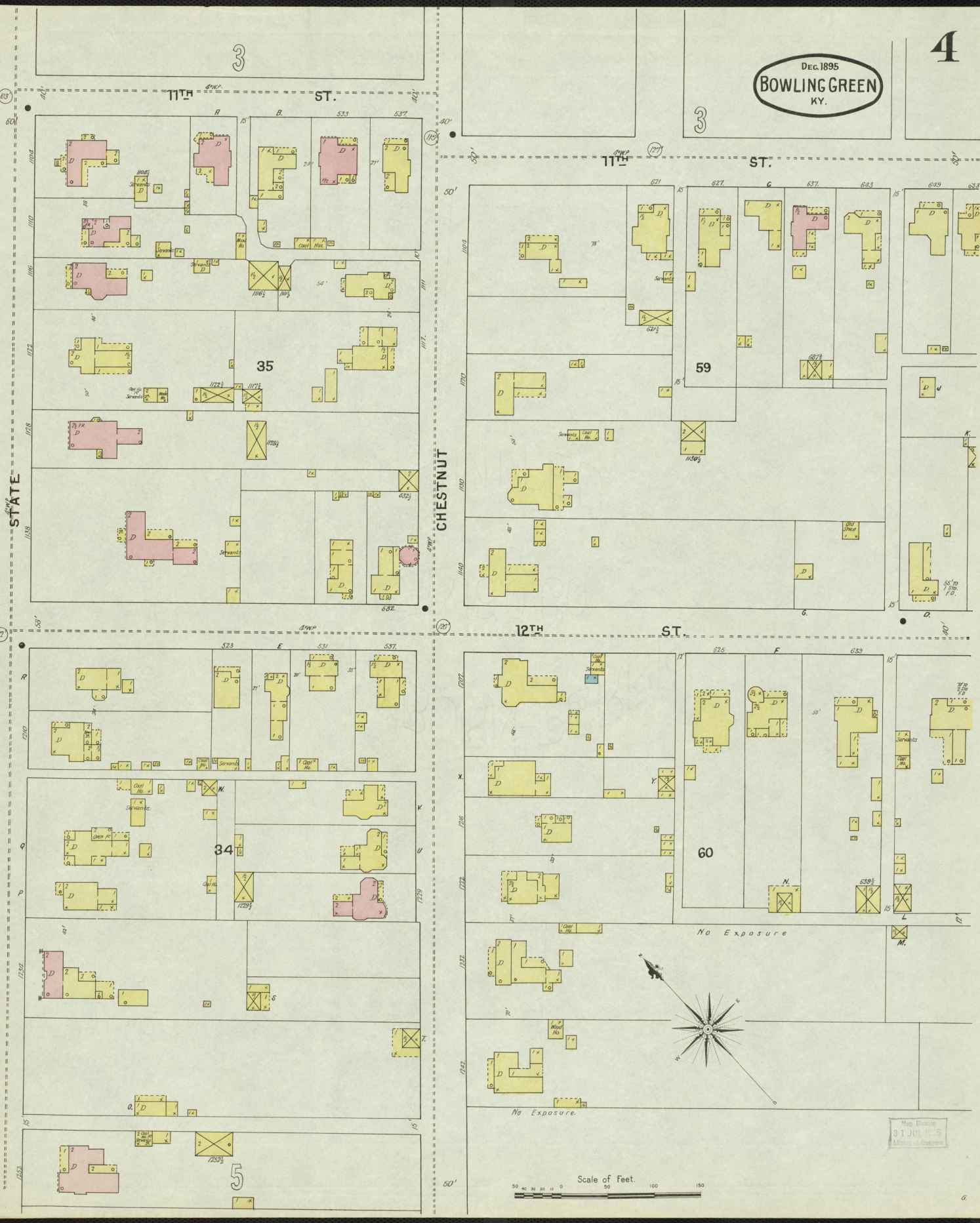
11<sup>TH</sup>

11<sup>TH</sup>





DEC. 1895  
BOWLING GREEN  
KY.



STATE

CHESTNUT

11TH ST.

11TH ST.

12TH ST.

35

59

34

60

5

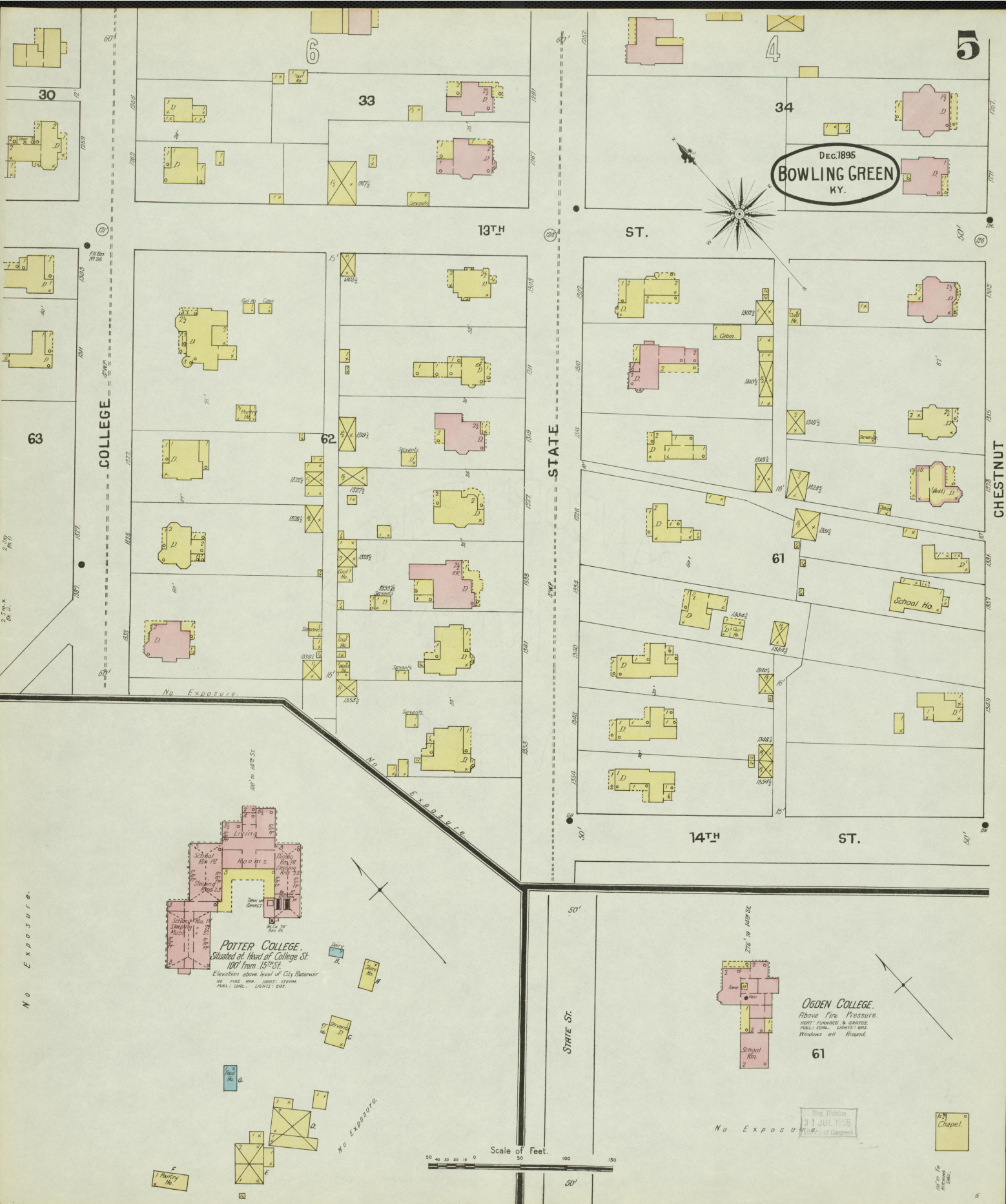
No Exposure

No Exposure

Scale of Feet.

Map Dated  
31 JUL 1895  
Library of Congress





Dec. 1895  
**BOWLING GREEN**  
 KY.

COLLEGE ST.

STATE ST.

CHESTNUT ST.

13<sup>TH</sup> ST.

ST.

14<sup>TH</sup> ST.

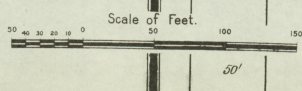
ST.

STATE ST.

**POTTER COLLEGE.**  
 Situated at Head of College St.  
 100' from 15<sup>TH</sup> St.  
 Elevation above level of City Reservoir  
 100' P.W. 100' ST. 100' ST. 100'  
 P.W. 100' ST. 100' ST. 100'

**OGDEN COLLEGE.**  
 Above Fire Pressure.  
 HIGH FINISHED & GRATED  
 PUBLIC CORN. LIGHTS & GRZ  
 Windows all Round.

Map Division  
 31 JUL 1895  
 The City of Bowling Green



No Exposure.

No Exposure

No Exposure

No Exposure

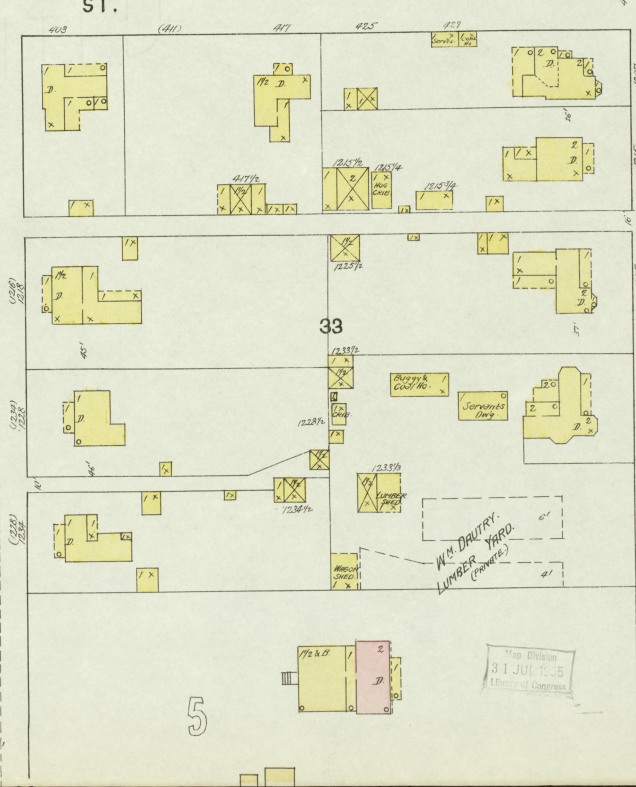
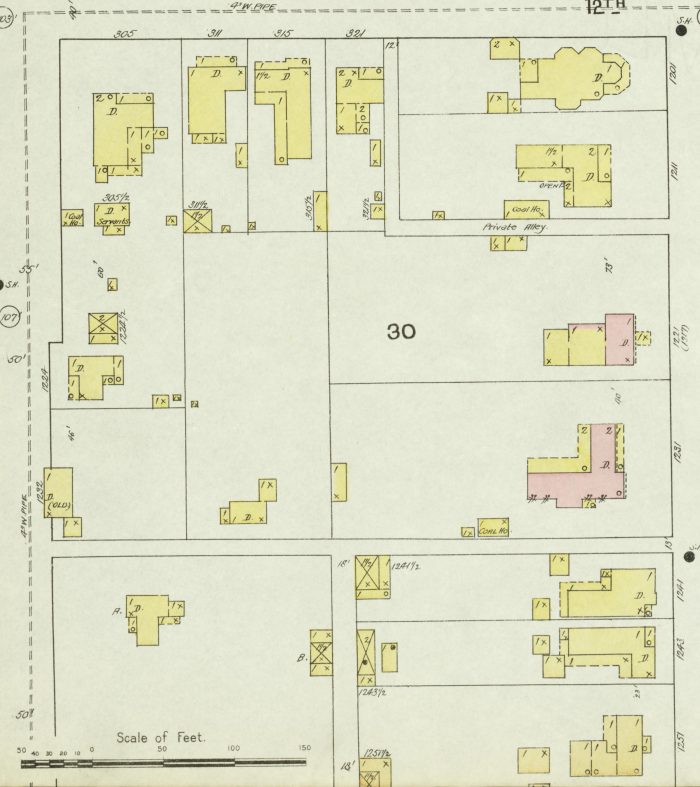
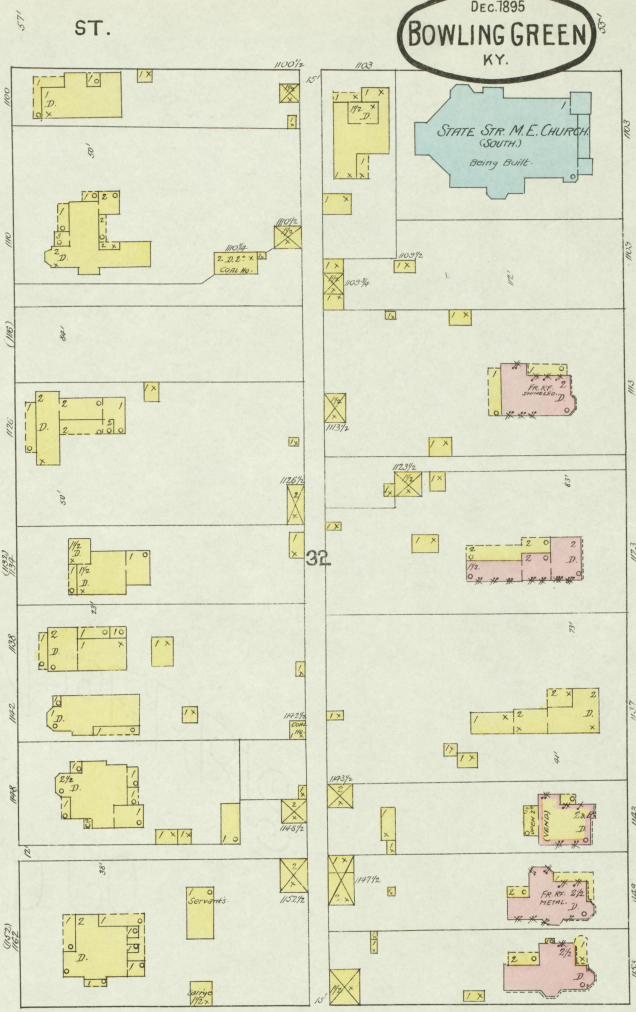
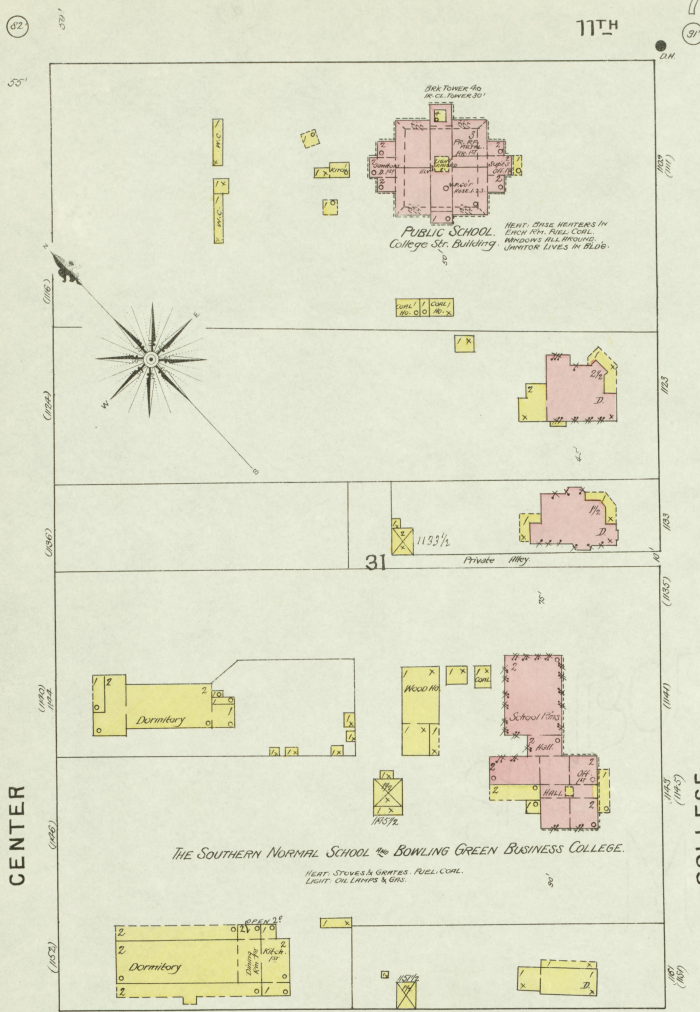
Chapel.

Map Division  
 31 JUL 1895  
 The City of Bowling Green



Dec. 1895  
**BOWLING GREEN**  
KY.

6



4

5

Map Division  
31 JUL 1935  
U.S. DEPT. OF COMMERCE





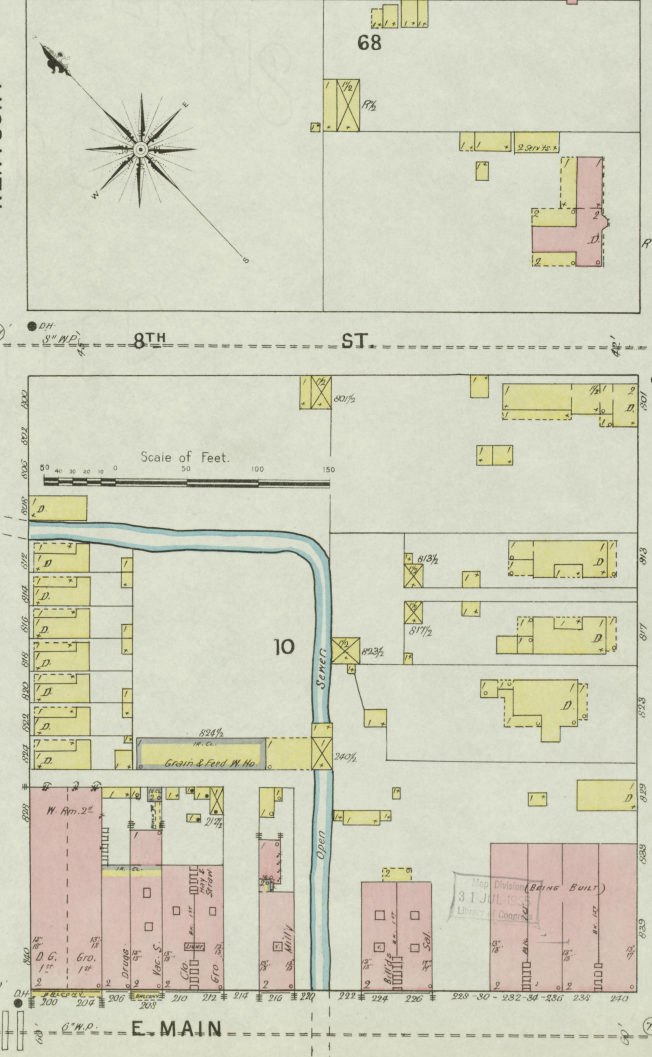
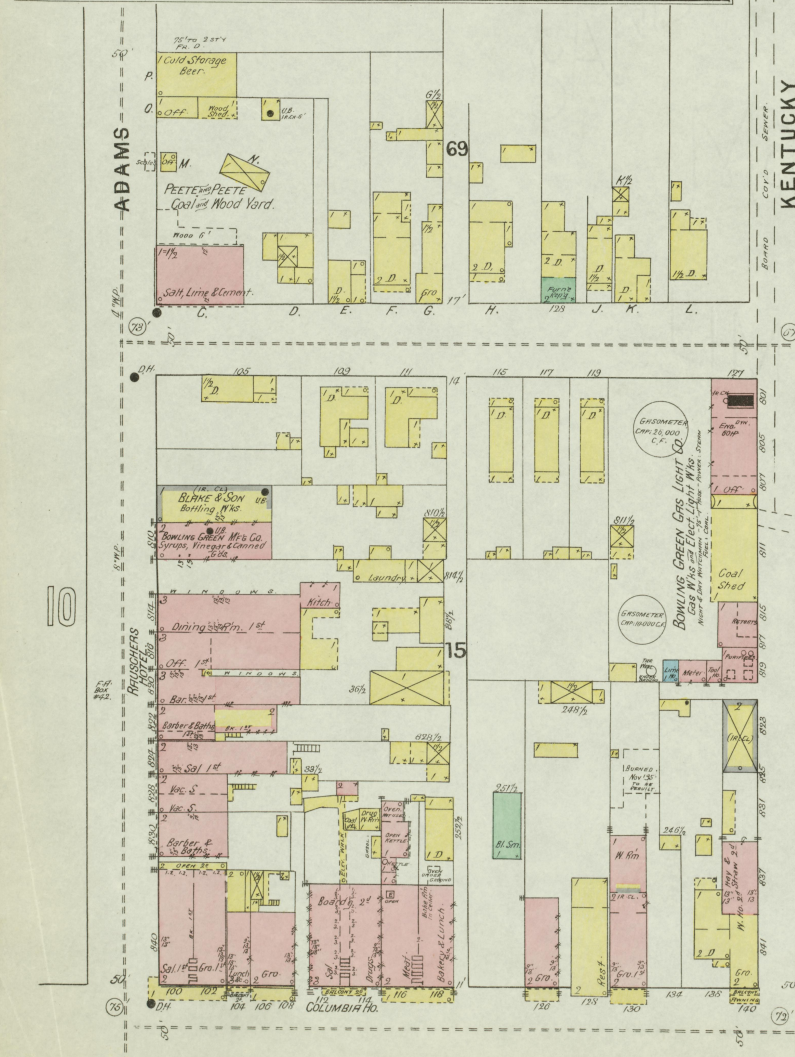
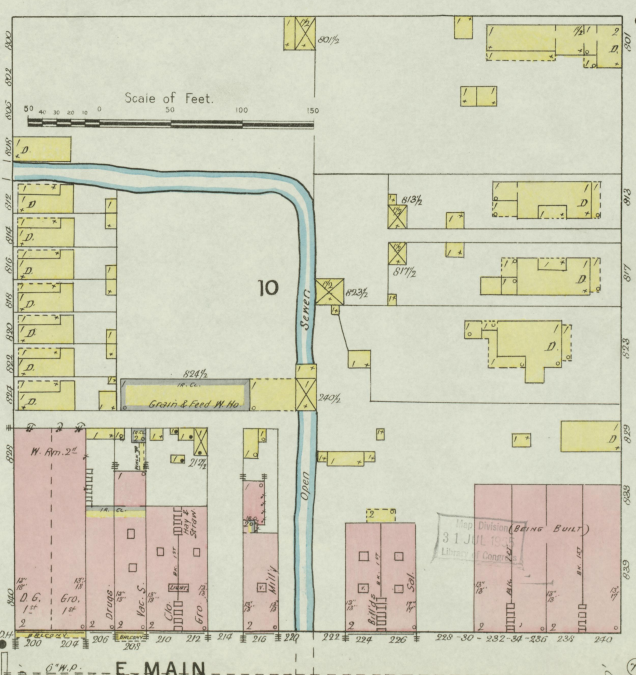
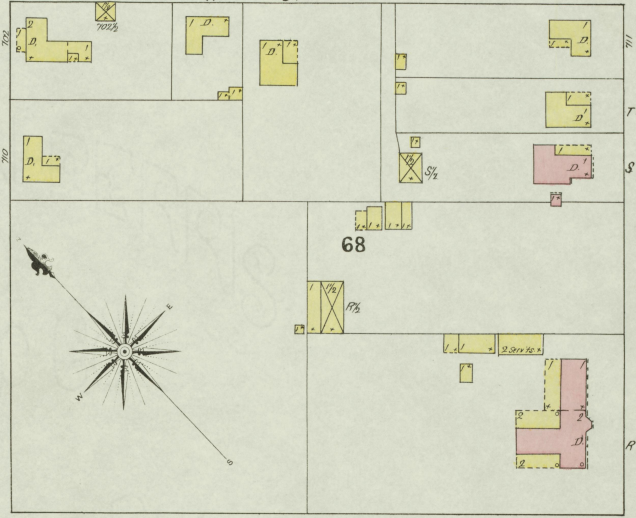
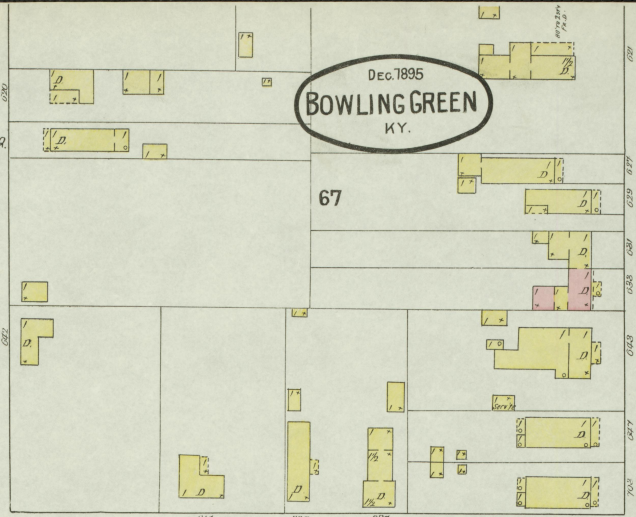
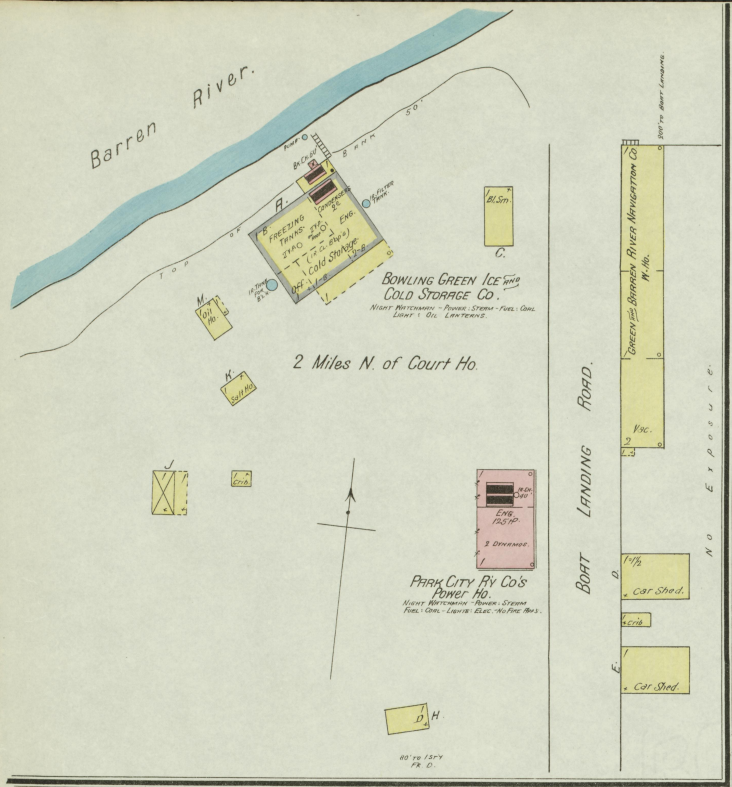






DEC. 1895  
**BOWLING GREEN**  
KY.

Barren River.







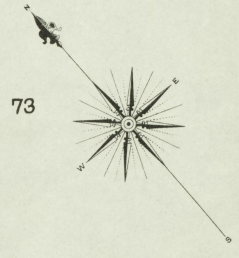
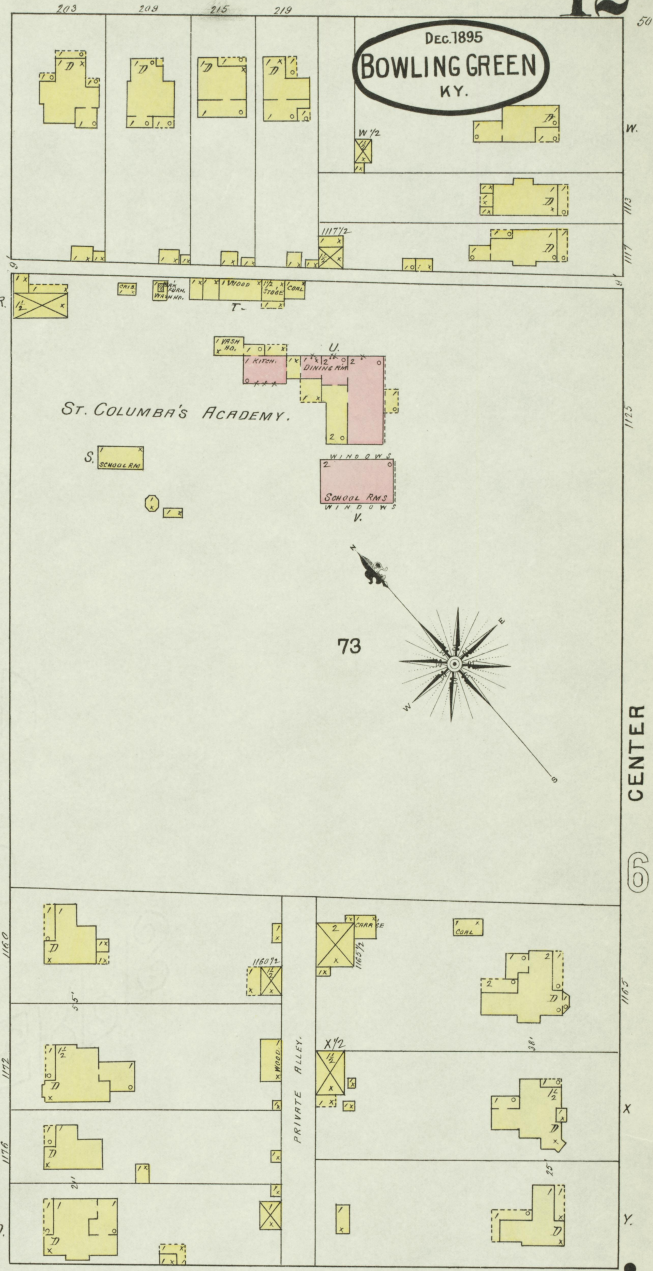




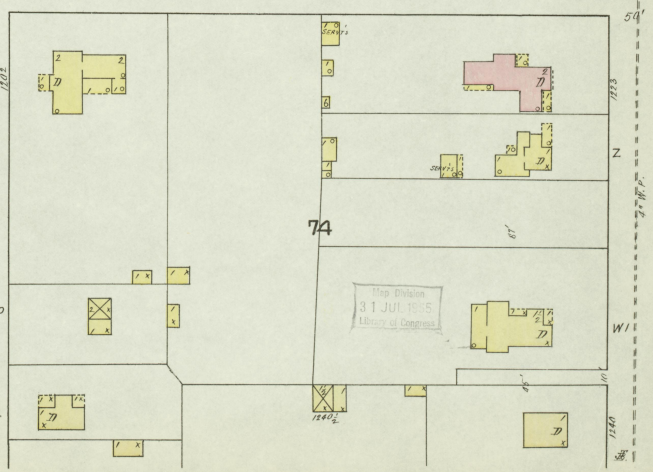


Dec. 1895  
BOWLING GREEN  
KY.

11<sup>TH</sup> ST.



12<sup>TH</sup> ST.



ADAMS

KENTUCKY

