

# Insurance Maps of FRANKFORT

FRANKLIN KENTUCKY COUNTY

## SANBORN MAP COMPANY

11 BROADWAY, NEW YORK

SCALE 50 FEET TO AN INCH

### AUG. 1912

Copyright 1912, by the Sanborn Map Co.

SEP 19 1912 C.F. 20762

Population 16000, Prevailing Winds, N & N.W.

#### WATER FACILITIES

Gravity system of water works, installed in 1886. Water supply from Kentucky River. Water pumped to two reservoirs, located on hill one mile south of Post Office, at an elevation of 300 ft. above Main and St. Clair sts. Combined capacity, ten million gallons. By two heavy duplex pumps, one of three, and one of one million gallons capacity, one one half compound triple expansion pump, of six million gallons capacity per hour. 6 miles of water pipes, 6 to 18 in. 135 double hydrants. Average pressure 30 lbs. Average daily consumption, two million gallons.

#### FIRE DEPARTMENT

Four paid men. Three horses, carrying harness. Two hose wagons, 600 ft. rubber hose, 1500 ft. cotton rubber lined hose. One hook & ladder truck with two 3 gal. chemical extinguishers. Supply of axes, crowbars, etc. Gravelled fire alarm system of bells. Grades level. Streets macadamized. Public lights electric. No established fire limits.



**KEY**

1. FIRE STATION AS SHOWN ON KEY MAP  
2. ALTERNATE STREET NUMBERS ARE SHOWN BY CONSECUTIVE STREET NUMBERS AND ARBITRARY

3. INDICATE RELATIVE HEIGHTS

4. BUILDINGS COLORED YELLOW ARE FRAME  
RED, BLUE, GREEN, BROWN, SPECIALLY

5. SHEDS

6. WINDOWS & DOOR SILLINGS  
7. WINDOWS & DOOR SILLINGS  
8. WINDOWS & DOOR SILLINGS  
9. WINDOWS & DOOR SILLINGS  
10. WINDOWS & DOOR SILLINGS

11. WINDOWS & DOOR SILLINGS  
12. WINDOWS & DOOR SILLINGS  
13. WINDOWS & DOOR SILLINGS  
14. WINDOWS & DOOR SILLINGS  
15. WINDOWS & DOOR SILLINGS

16. WINDOWS & DOOR SILLINGS  
17. WINDOWS & DOOR SILLINGS  
18. WINDOWS & DOOR SILLINGS  
19. WINDOWS & DOOR SILLINGS  
20. WINDOWS & DOOR SILLINGS

21. WINDOWS & DOOR SILLINGS  
22. WINDOWS & DOOR SILLINGS  
23. WINDOWS & DOOR SILLINGS  
24. WINDOWS & DOOR SILLINGS  
25. WINDOWS & DOOR SILLINGS

26. WINDOWS & DOOR SILLINGS  
27. WINDOWS & DOOR SILLINGS  
28. WINDOWS & DOOR SILLINGS  
29. WINDOWS & DOOR SILLINGS  
30. WINDOWS & DOOR SILLINGS

31. WINDOWS & DOOR SILLINGS  
32. WINDOWS & DOOR SILLINGS  
33. WINDOWS & DOOR SILLINGS  
34. WINDOWS & DOOR SILLINGS  
35. WINDOWS & DOOR SILLINGS

36. WINDOWS & DOOR SILLINGS  
37. WINDOWS & DOOR SILLINGS  
38. WINDOWS & DOOR SILLINGS  
39. WINDOWS & DOOR SILLINGS  
40. WINDOWS & DOOR SILLINGS

41. WINDOWS & DOOR SILLINGS  
42. WINDOWS & DOOR SILLINGS  
43. WINDOWS & DOOR SILLINGS  
44. WINDOWS & DOOR SILLINGS  
45. WINDOWS & DOOR SILLINGS

46. WINDOWS & DOOR SILLINGS  
47. WINDOWS & DOOR SILLINGS  
48. WINDOWS & DOOR SILLINGS  
49. WINDOWS & DOOR SILLINGS  
50. WINDOWS & DOOR SILLINGS

51. WINDOWS & DOOR SILLINGS  
52. WINDOWS & DOOR SILLINGS  
53. WINDOWS & DOOR SILLINGS  
54. WINDOWS & DOOR SILLINGS  
55. WINDOWS & DOOR SILLINGS

56. WINDOWS & DOOR SILLINGS  
57. WINDOWS & DOOR SILLINGS  
58. WINDOWS & DOOR SILLINGS  
59. WINDOWS & DOOR SILLINGS  
60. WINDOWS & DOOR SILLINGS

61. WINDOWS & DOOR SILLINGS  
62. WINDOWS & DOOR SILLINGS  
63. WINDOWS & DOOR SILLINGS  
64. WINDOWS & DOOR SILLINGS  
65. WINDOWS & DOOR SILLINGS

66. WINDOWS & DOOR SILLINGS  
67. WINDOWS & DOOR SILLINGS  
68. WINDOWS & DOOR SILLINGS  
69. WINDOWS & DOOR SILLINGS  
70. WINDOWS & DOOR SILLINGS

71. WINDOWS & DOOR SILLINGS  
72. WINDOWS & DOOR SILLINGS  
73. WINDOWS & DOOR SILLINGS  
74. WINDOWS & DOOR SILLINGS  
75. WINDOWS & DOOR SILLINGS

76. WINDOWS & DOOR SILLINGS  
77. WINDOWS & DOOR SILLINGS  
78. WINDOWS & DOOR SILLINGS  
79. WINDOWS & DOOR SILLINGS  
80. WINDOWS & DOOR SILLINGS

81. WINDOWS & DOOR SILLINGS  
82. WINDOWS & DOOR SILLINGS  
83. WINDOWS & DOOR SILLINGS  
84. WINDOWS & DOOR SILLINGS  
85. WINDOWS & DOOR SILLINGS

86. WINDOWS & DOOR SILLINGS  
87. WINDOWS & DOOR SILLINGS  
88. WINDOWS & DOOR SILLINGS  
89. WINDOWS & DOOR SILLINGS  
90. WINDOWS & DOOR SILLINGS

91. WINDOWS & DOOR SILLINGS  
92. WINDOWS & DOOR SILLINGS  
93. WINDOWS & DOOR SILLINGS  
94. WINDOWS & DOOR SILLINGS  
95. WINDOWS & DOOR SILLINGS

96. WINDOWS & DOOR SILLINGS  
97. WINDOWS & DOOR SILLINGS  
98. WINDOWS & DOOR SILLINGS  
99. WINDOWS & DOOR SILLINGS  
100. WINDOWS & DOOR SILLINGS

## INDEX

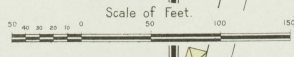
STREETS	SECT	SECT	SECT	SECT	SECT
Ann	A	200-206	12	Collins	300-325
Arlington Ave.	B	200-207	14	Covey	300-326
Barnet Ave.	C	200-208	16	Crow (arbitrary)	300-327
Battle Alley E	D	200-209	18	Dabney	300-328
Benson	E	200-210	20	Dudley	300-329
Benson Road	F	200-211	22	Ella Alley	300-330
Blawie	G	200-212	24	Elgin	300-331
Bowen	H	200-213	26	Frankfort & Lawrenceburg Turnpike	300-332
Bridges	I	200-214	28	Frankfort & Louisville Turnpike	300-333
Broadway E	J	200-215	30	Frankfort & Versailles Turnpike	300-334
Campbell E	K	200-216	32	Frankfort & Wallace Ave	300-335
Cat Fish Alley	L	200-217	34	Frankfort & West Main	300-336
Center	M	200-218	36	Frankfort & West Wall	300-337
China Ave	N	200-219	38	Frankfort & West Wall	300-338
Clinton E	O	200-220	40	Frankfort & West Wall	300-339
Coke	P	200-221	42	Frankfort & West Wall	300-340
	Q	200-222	44	Frankfort & West Wall	300-341
	R	200-223	46	Frankfort & West Wall	300-342
	S	200-224	48	Frankfort & West Wall	300-343
	T	200-225	50	Frankfort & West Wall	300-344
	U	200-226	52	Frankfort & West Wall	300-345
	V	200-227	54	Frankfort & West Wall	300-346
	W	200-228	56	Frankfort & West Wall	300-347
	X	200-229	58	Frankfort & West Wall	300-348
	Y	200-230	60	Frankfort & West Wall	300-349
	Z	200-231	62	Frankfort & West Wall	300-350
	AA	200-232	64	Frankfort & West Wall	300-351
	AB	200-233	66	Frankfort & West Wall	300-352
	AC	200-234	68	Frankfort & West Wall	300-353
	AD	200-235	70	Frankfort & West Wall	300-354
	AE	200-236	72	Frankfort & West Wall	300-355
	AF	200-237	74	Frankfort & West Wall	300-356
	AG	200-238	76	Frankfort & West Wall	300-357
	AH	200-239	78	Frankfort & West Wall	300-358
	AI	200-240	80	Frankfort & West Wall	300-359
	AJ	200-241	82	Frankfort & West Wall	300-360
	AK	200-242	84	Frankfort & West Wall	300-361
	AL	200-243	86	Frankfort & West Wall	300-362
	AM	200-244	88	Frankfort & West Wall	300-363
	AN	200-245	90	Frankfort & West Wall	300-364
	AO	200-246	92	Frankfort & West Wall	300-365
	AP	200-247	94	Frankfort & West Wall	300-366
	AQ	200-248	96	Frankfort & West Wall	300-367
	AR	200-249	98	Frankfort & West Wall	300-368
	AS	200-250	100	Frankfort & West Wall	300-369
	AT	200-251	102	Frankfort & West Wall	300-370
	AU	200-252	104	Frankfort & West Wall	300-371
	AV	200-253	106	Frankfort & West Wall	300-372
	AW	200-254	108	Frankfort & West Wall	300-373
	AX	200-255	110	Frankfort & West Wall	300-374
	AY	200-256	112	Frankfort & West Wall	300-375
	AZ	200-257	114	Frankfort & West Wall	300-376
	BA	200-258	116	Frankfort & West Wall	300-377
	BB	200-259	118	Frankfort & West Wall	300-378
	BC	200-260	120	Frankfort & West Wall	300-379
	BD	200-261	122	Frankfort & West Wall	300-380
	BE	200-262	124	Frankfort & West Wall	300-381
	BF	200-263	126	Frankfort & West Wall	300-382
	BG	200-264	128	Frankfort & West Wall	300-383
	BH	200-265	130	Frankfort & West Wall	300-384
	BI	200-266	132	Frankfort & West Wall	300-385
	BJ	200-267	134	Frankfort & West Wall	300-386
	BK	200-268	136	Frankfort & West Wall	300-387
	BL	200-269	138	Frankfort & West Wall	300-388
	BM	200-270	140	Frankfort & West Wall	300-389
	BN	200-271	142	Frankfort & West Wall	300-390
	BO	200-272	144	Frankfort & West Wall	300-391
	BP	200-273	146	Frankfort & West Wall	300-392
	BQ	200-274	148	Frankfort & West Wall	300-393
	BR	200-275	150	Frankfort & West Wall	300-394
	BS	200-276	152	Frankfort & West Wall	300-395
	BT	200-277	154	Frankfort & West Wall	300-396
	BU	200-278	156	Frankfort & West Wall	300-397
	BV	200-279	158	Frankfort & West Wall	300-398
	BW	200-280	160	Frankfort & West Wall	300-399
	BX	200-281	162	Frankfort & West Wall	300-400
	BY	200-282	164	Frankfort & West Wall	300-401
	BZ	200-283	166	Frankfort & West Wall	300-402
	CA	200-284	168	Frankfort & West Wall	300-403
	CB	200-285	170	Frankfort & West Wall	300-404
	CC	200-286	172	Frankfort & West Wall	300-405
	CD	200-287	174	Frankfort & West Wall	300-406
	CE	200-288	176	Frankfort & West Wall	300-407
	CF	200-289	178	Frankfort & West Wall	300-408
	CG	200-290	180	Frankfort & West Wall	300-409
	CH	200-291	182	Frankfort & West Wall	300-410
	CI	200-292	184	Frankfort & West Wall	300-411
	CJ	200-293	186	Frankfort & West Wall	300-412
	CK	200-294	188	Frankfort & West Wall	300-413
	CL	200-295	190	Frankfort & West Wall	300-414
	CM	200-296	192	Frankfort & West Wall	300-415
	CN	200-297	194	Frankfort & West Wall	300-416
	CO	200-298	196	Frankfort & West Wall	300-417
	CP	200-299	198	Frankfort & West Wall	300-418
	CQ	200-300	200	Frankfort & West Wall	300-419
	CR	200-301	202	Frankfort & West Wall	300-420
	CS	200-302	204	Frankfort & West Wall	300-421
	CT	200-303	206	Frankfort & West Wall	300-422
	CU	200-304	208	Frankfort & West Wall	300-423
	CV	200-305	210	Frankfort & West Wall	300-424
	CW	200-306	212	Frankfort & West Wall	300-425
	CX	200-307	214	Frankfort & West Wall	300-426
	CY	200-308	216	Frankfort & West Wall	300-427
	CZ	200-309	218	Frankfort & West Wall	300-428
	DA	200-310	220	Frankfort & West Wall	300-429
	DB	200-311	222	Frankfort & West Wall	300-430
	DC	200-312	224	Frankfort & West Wall	300-431
	DD	200-313	226	Frankfort & West Wall	300-432
	DE	200-314	228	Frankfort & West Wall	300-433
	DF	200-315	230	Frankfort & West Wall	300-434
	DG	200-316	232	Frankfort & West Wall	300-435
	DH	200-317	234	Frankfort & West Wall	300-436
	DI	200-318	236	Frankfort & West Wall	300-437
	DJ	200-319	238	Frankfort & West Wall	300-438
	DK	200-320	240	Frankfort & West Wall	300-439
	DL	200-321	242	Frankfort & West Wall	300-440
	DM	200-322	244	Frankfort & West Wall	300-441
	DN	200-323	246	Frankfort & West Wall	300-442
	DO	200-324	248	Frankfort & West Wall	300-443
	DP	200-325	250	Frankfort & West Wall	300-444
	DQ	200-326	252	Frankfort & West Wall	300-445
	DR	200-327	254	Frankfort & West Wall	300-446
	DS	200-328	256	Frankfort & West Wall	300-447
	DT	200-329	258	Frankfort & West Wall	300-448
	DU	200-330	260	Frankfort & West Wall	300-449
	DV	200-331	262	Frankfort & West Wall	300-450
	DW	200-332	264	Frankfort & West Wall	300-451
	DX	200-333	266	Frankfort & West Wall	300-452
	DY	200-334	268	Frankfort & West Wall	300-453
	DZ	200-335	270	Frankfort & West Wall	300-454
	EA	200-336	272	Frankfort & West Wall	300-455
	EB	200-337	274	Frankfort & West Wall	300-456
	EC	200-338	276	Frankfort & West Wall	300-457
	ED	200-339	278	Frankfort & West Wall	300-458
	EE	200-340	280	Frankfort & West Wall	300-459
	EF	200-341	282	Frankfort & West Wall	300-460
	EG	200-342	284	Frankfort & West Wall	300-461
	EH	200-343	286	Frankfort & West Wall	300-462
	EI	200-344	288	Frankfort & West Wall	300-463
	EJ	200-345	290	Frankfort & West Wall	300-464
	EK	200-346	292	Frankfort & West Wall	300-465
	EL	200-347	294	Frankfort & West Wall	300-466
	EM	200-348	296	Frankfort & West Wall	300-467
	EN	200-349	298	Frankfort & West Wall	300-468
	EO	200-350	300	Frankfort & West Wall	300-469
	EP	200-351	302	Frankfort & West Wall	300-470
	EQ	200-352	304	Frankfort & West Wall	300-471
	ER				



Located 1 1/4 Miles N.W. of P.O.

**S. C. HERBST**  
**AS JOHN E. FITZGERALD**  
**OLD JUDGE DISTILLERY**  
 FORMERLY LAVAL & MAYSE  
 FORMERLY THE OLD JUDGE DISTILLERY  
 Registered Distillery No. 11  
 7th District, Franklin Co. Ky.  
 PRODUCT BOURBON WHISKY MADE FROM MASH WHISKY  
 CAPACITY 110 BUSHELS PER DAY, YIELD 4% BILLS PER DAY.  
 100 PARTS PER 1000; PURE; 31.00% NO. 100;  
 PURE; 100% COUNTRY; 1.00% INTERMEDIATE; 31.00%  
 FORCE POWER 100% BY HAND; FIVE PRILLS IN  
 BILLS IN DISTILLERY;  
 1.00% MILL 450 REV.

Located 2 Miles N.W. of P.O.



Kentucky River

31

3

AUG. 1912  
FRANKFORT  
KY.



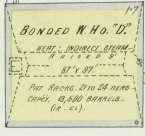
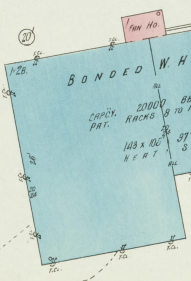




Kentucky River

5  
AUG 1912  
FRANKFORT  
Ky.

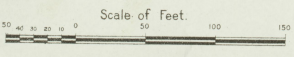
STEEL BRIDGE TO RIVER.



KENTUCKY DISTILLERIES & WAREHOUSE CO.  
AND ITS JOHN COCHRAN & CO. SPRING HILL DISTY.  
Registered Distillers No. 37, 72<sup>d</sup> District, Franklin Co. Ky.  
PRODUCT: HEND MADE SOUV. MASH, BOOBY & RYE WHISKY.  
MASH CAPAC. 500 BU PER DAY, MILD & COLD.

OPERATED ABOUT FOUR MONTHS PER YEAR. STEAM BOILER.  
NEWLY REBUILT. IN CHINA COOK. ONE STATION. VARIOUS  
FRONTS. THREE STEAM. FIVE. STOVES. BOILING OR  
SYSTEMS IN DISTILLERS. SPECIAL EQUIPMENTS IN BONDED  
WHISKY. BEST. LATEST SYSTEM IN H.O. & BONDED BOTTLING.  
HEAT INSULATED SYSTEM IN W.H.O. STORE IN DAY & NIGHT IN-  
STANTLY. AUTOMATIC OPERATIONS IN DISTILLERS. SCUM  
ON RO AND DOWN CUBS. ONE SYSTEM. FED BY DISTILLERS.  
DISPOSERS ON HALL SYSTEM. THE SCUM IS AS TO USE FOR  
SOURCE WASH. RELAYED BY SCUM FROM SPRINGS.  
200 FT. HIGHER IN DISTILLERS USED FOR MANUFACTURING  
PURPOSES. FED BY SMALL FIRE PUMP. FIRE PUMP & BEIS OUT.

BONDED W.H.O. H. CAPAC. 1000000 BU. HEND MADE SOUV. MASH, BOOBY & RYE WHISKY.  
MASH CAPAC. 500 BU PER DAY, MILD & COLD.



6

W. CLINTON



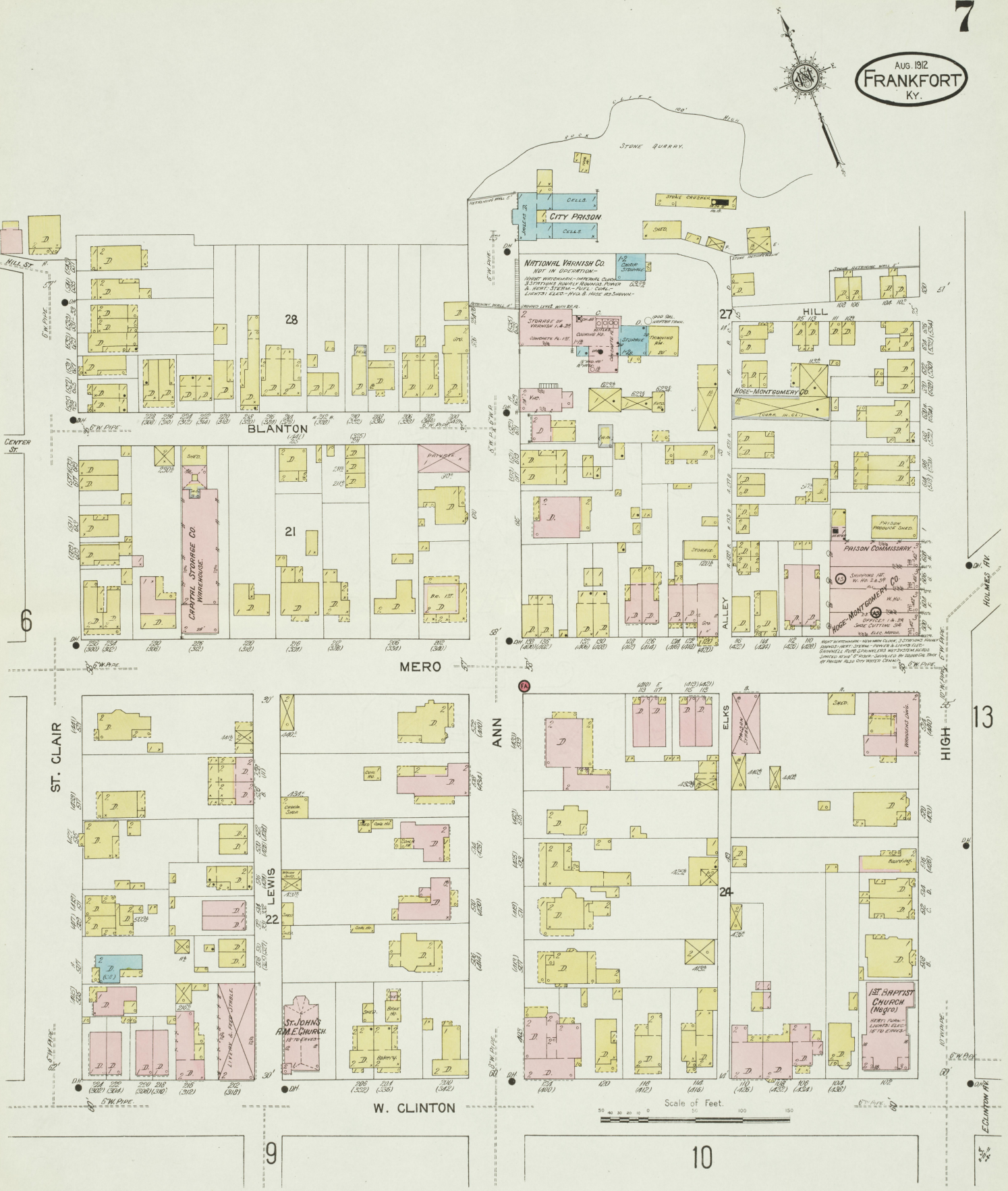
5

7

8

9

Scale of Feet.  
50 100 150



6

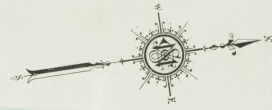
13

9

10

Scale of Feet.  
0 20 40 60 80 100 120 140 160

AUG 1912  
FRANKFORT  
KY.



FOR NIGHT & DAY POWER STEAM-FUEL COIL-  
LUMBER-2400-1000-18 HOURS  
REPAIRING SYSTEM CAPACITY 65 TONS

Hoge Coal & Feed Co.

Frankfort Ice Co.

KENNEY BROS. SAW & PLANING MILL

HAMMONDS CO. LUMBER & BUILDERS

1st PRESBYN CHURCH

WASHINGTON

Scale of Feet.

9

5

6

11

17

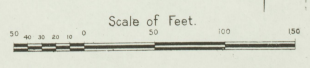
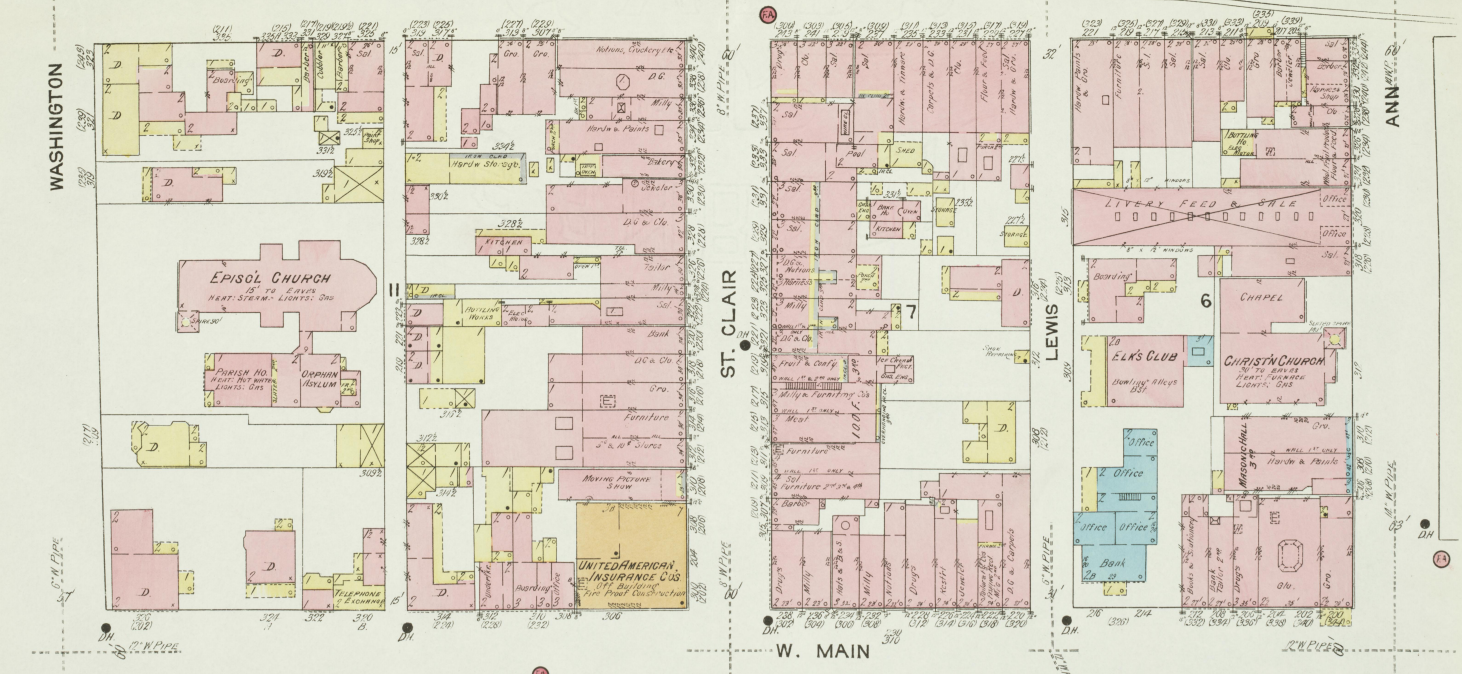
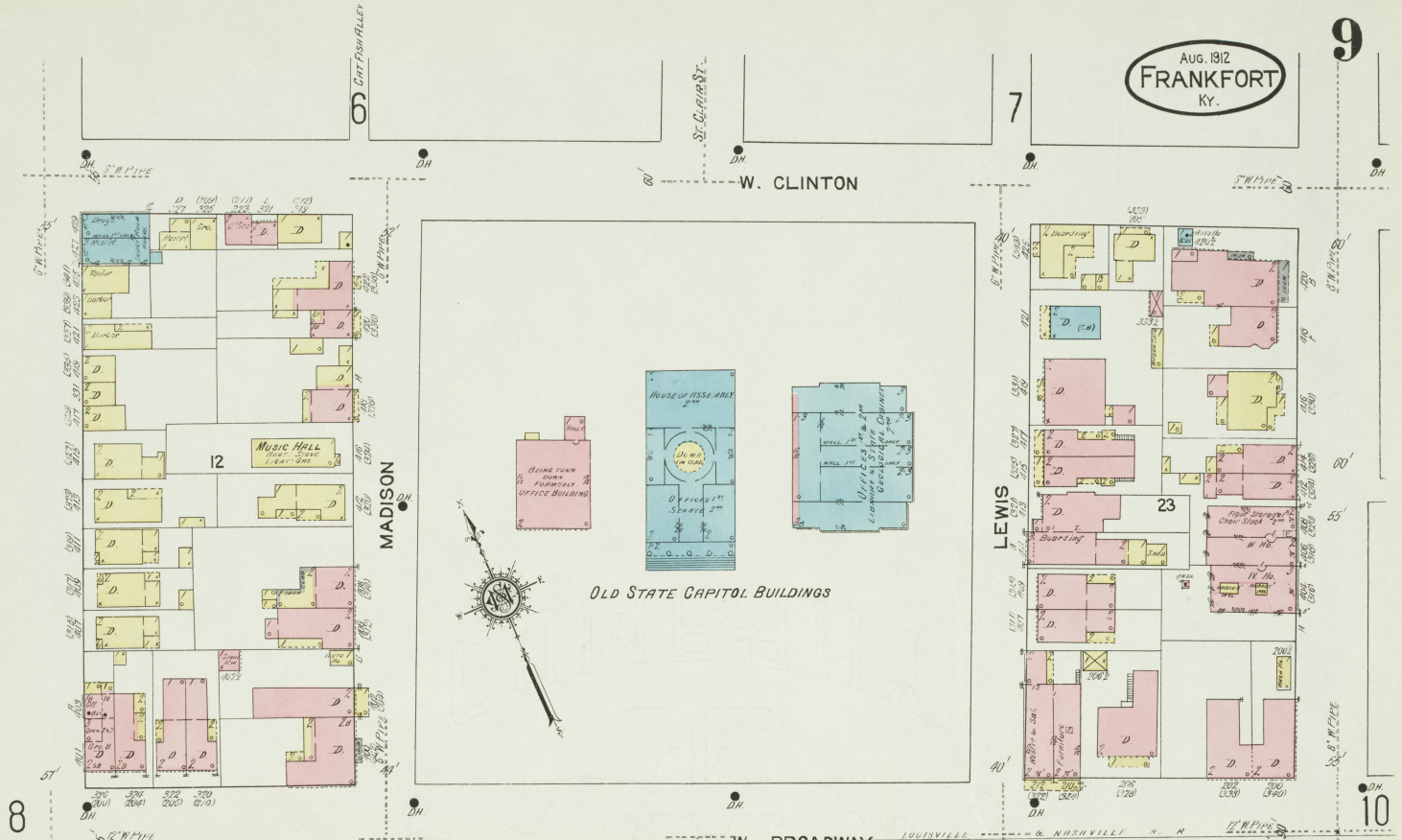
18

WILKINSON

LONG LANE

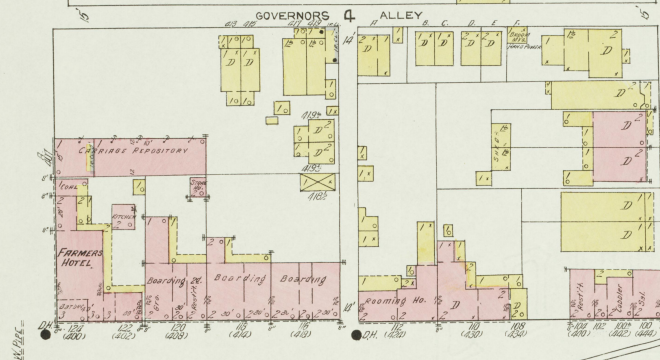
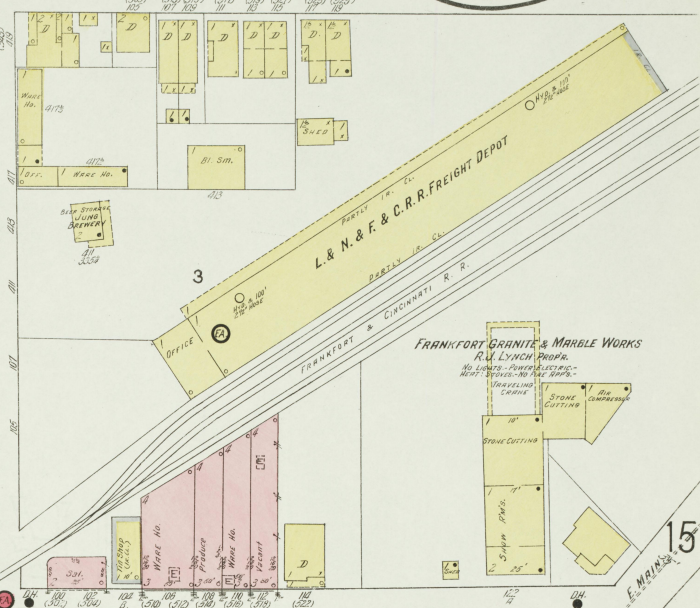
WASHINGTON





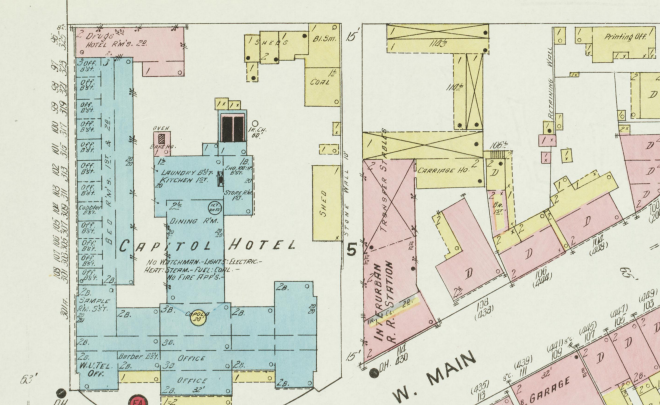
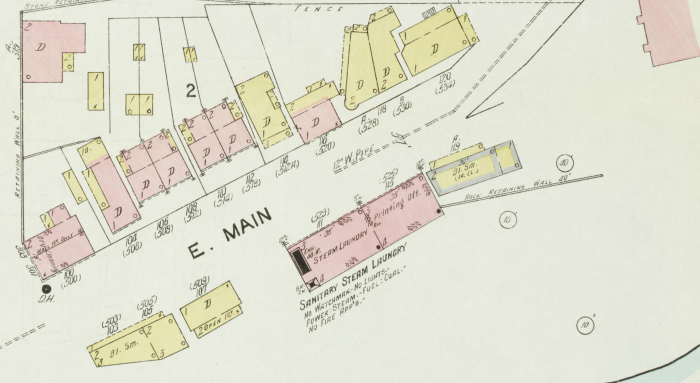
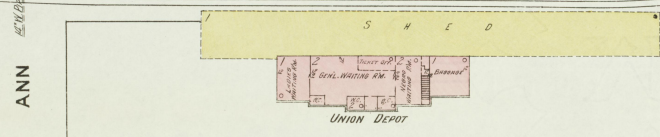
7  
W. CLINTON

13  
E. CLINTON

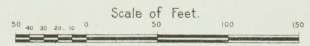


9  
ANN  
W. BROADWAY

E. BROADWAY



Kentucky  
River



W. MAIN

WAPPING

WILKINSON

WATSON CT.

WASHINGTON



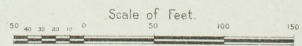
55

30

29

60

Kentucky River





11

9

10

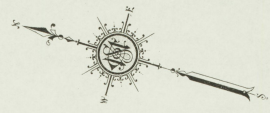
9

17

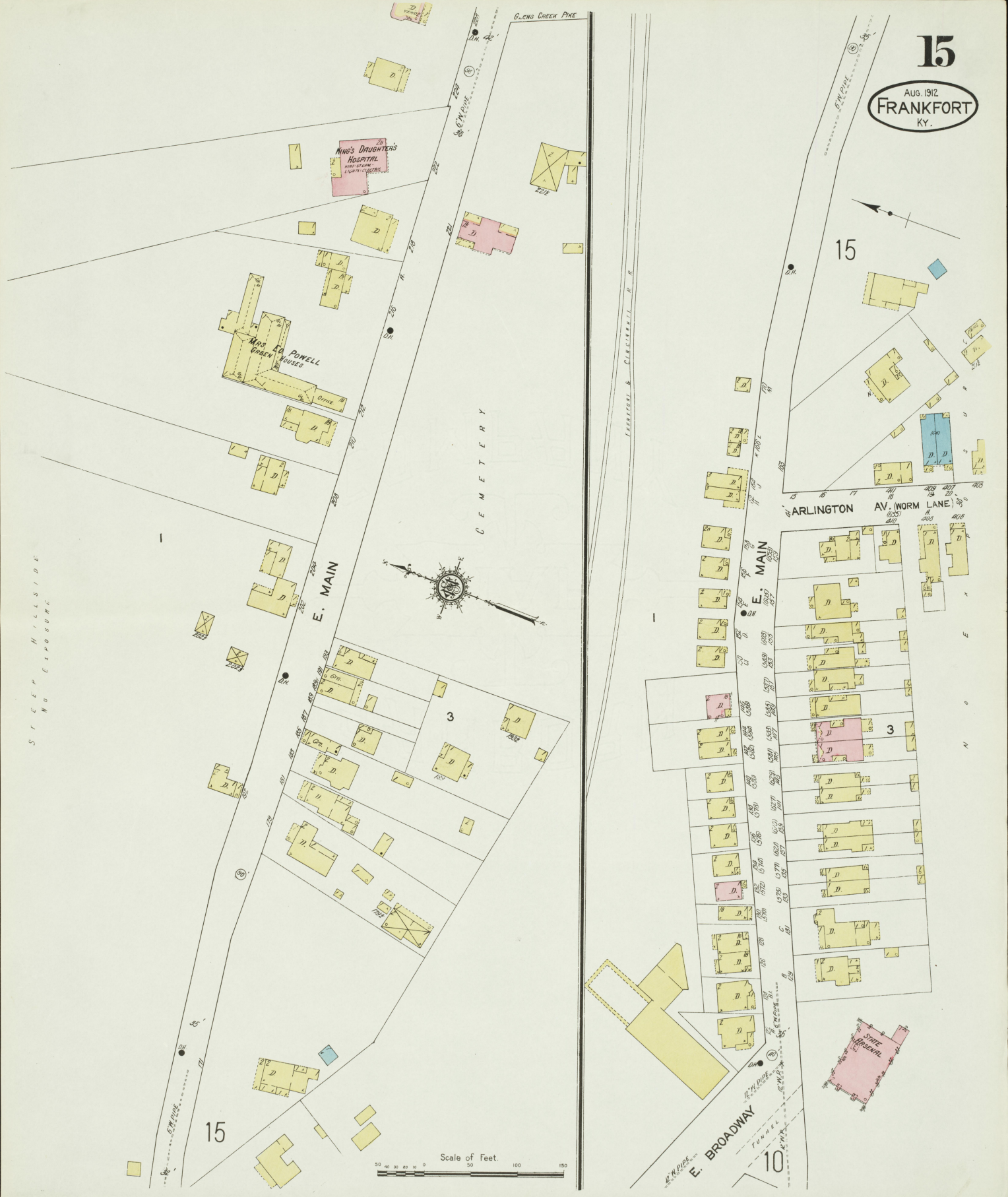
Scale of Feet.  
0 50 100 150







Scale of Feet.  
50 100 150



STEEP HILLSIDE  
NO EXPOSURE

E. MAIN

CEMETERY



Scale of Feet.  
0 50 100 150

E. MAIN

WORM LANE

E. BROADWAY  
TUNNEL

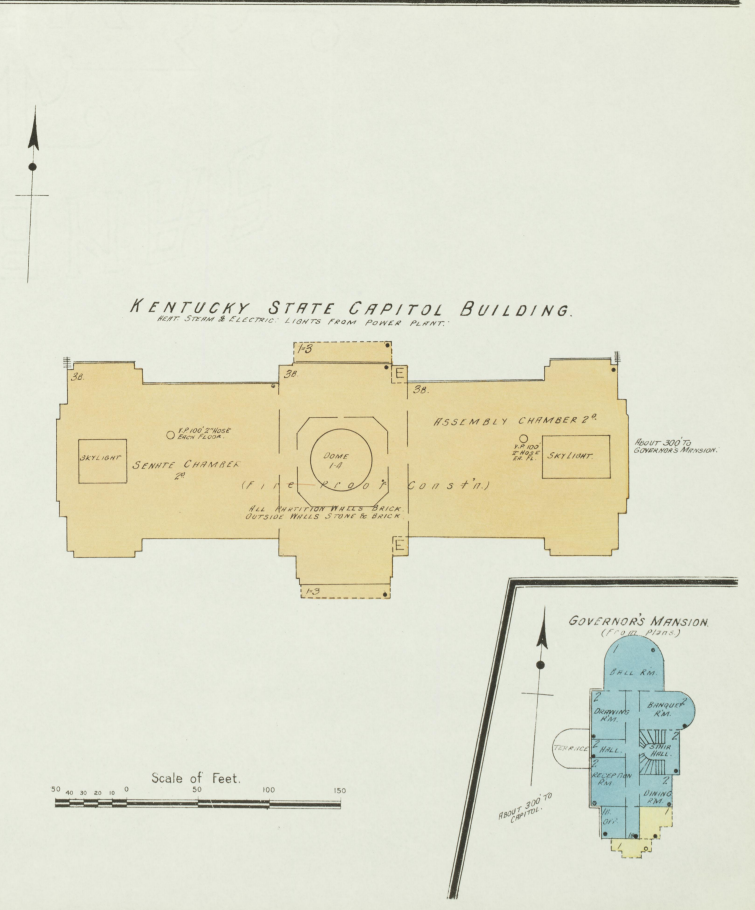
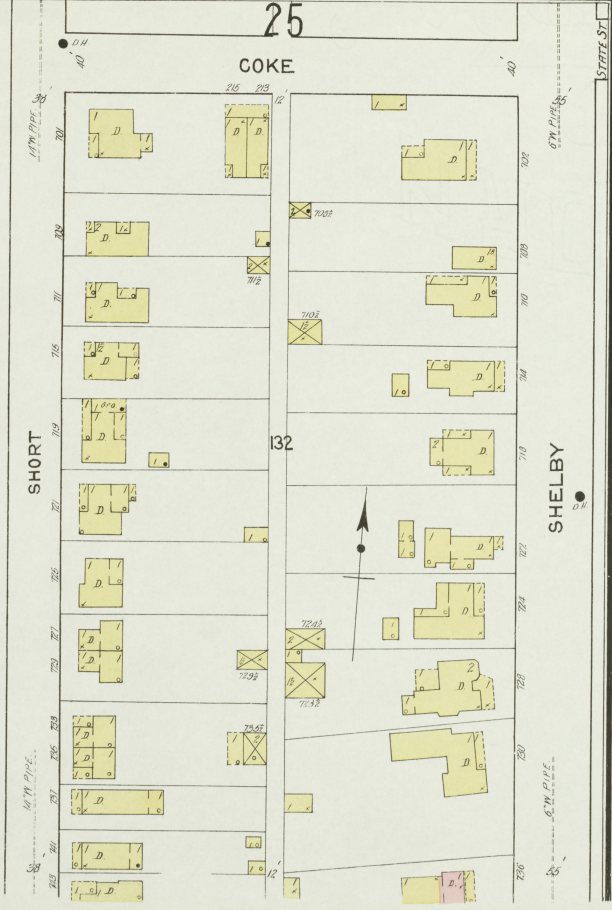
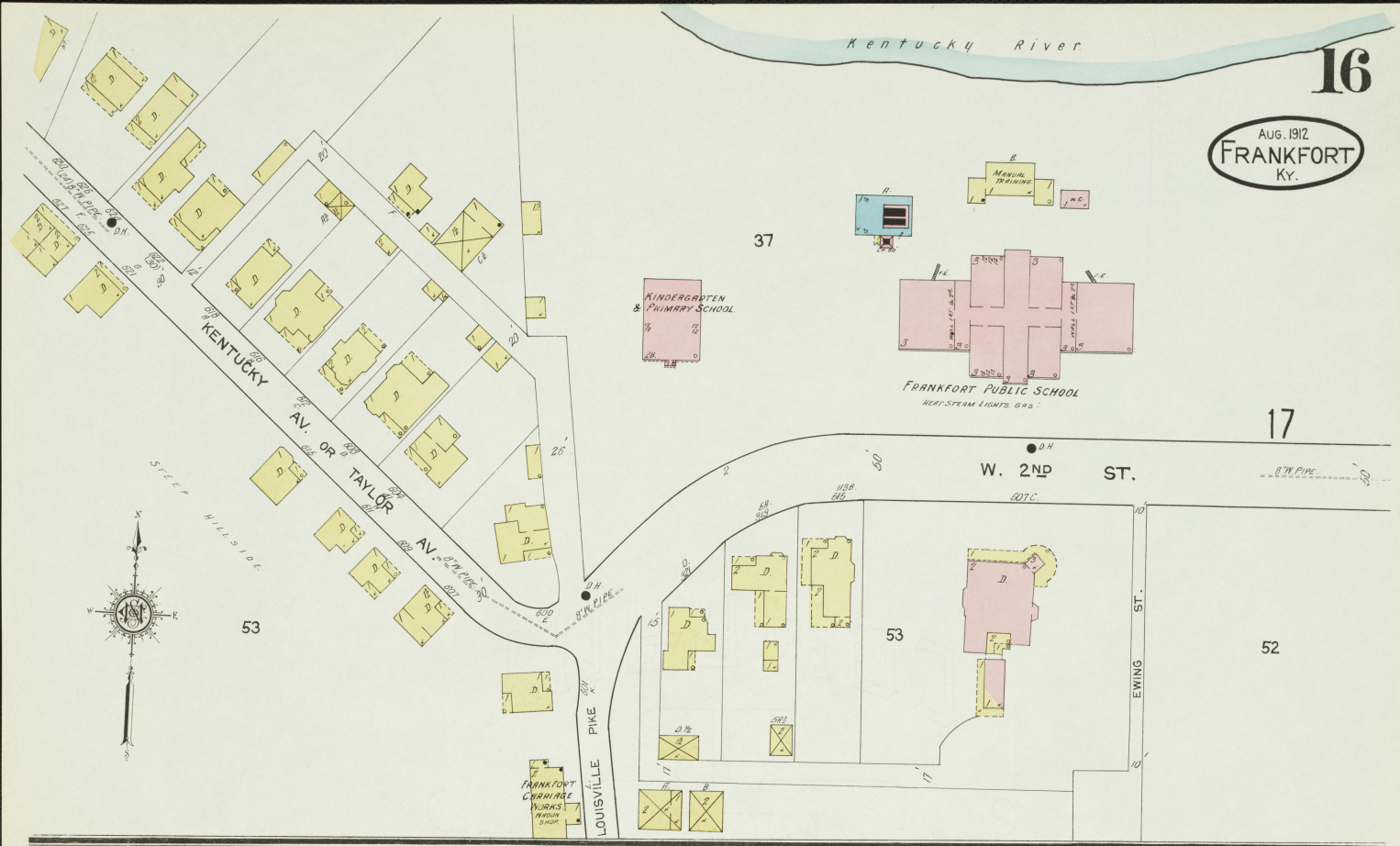
15

10

ST. HOSPITAL

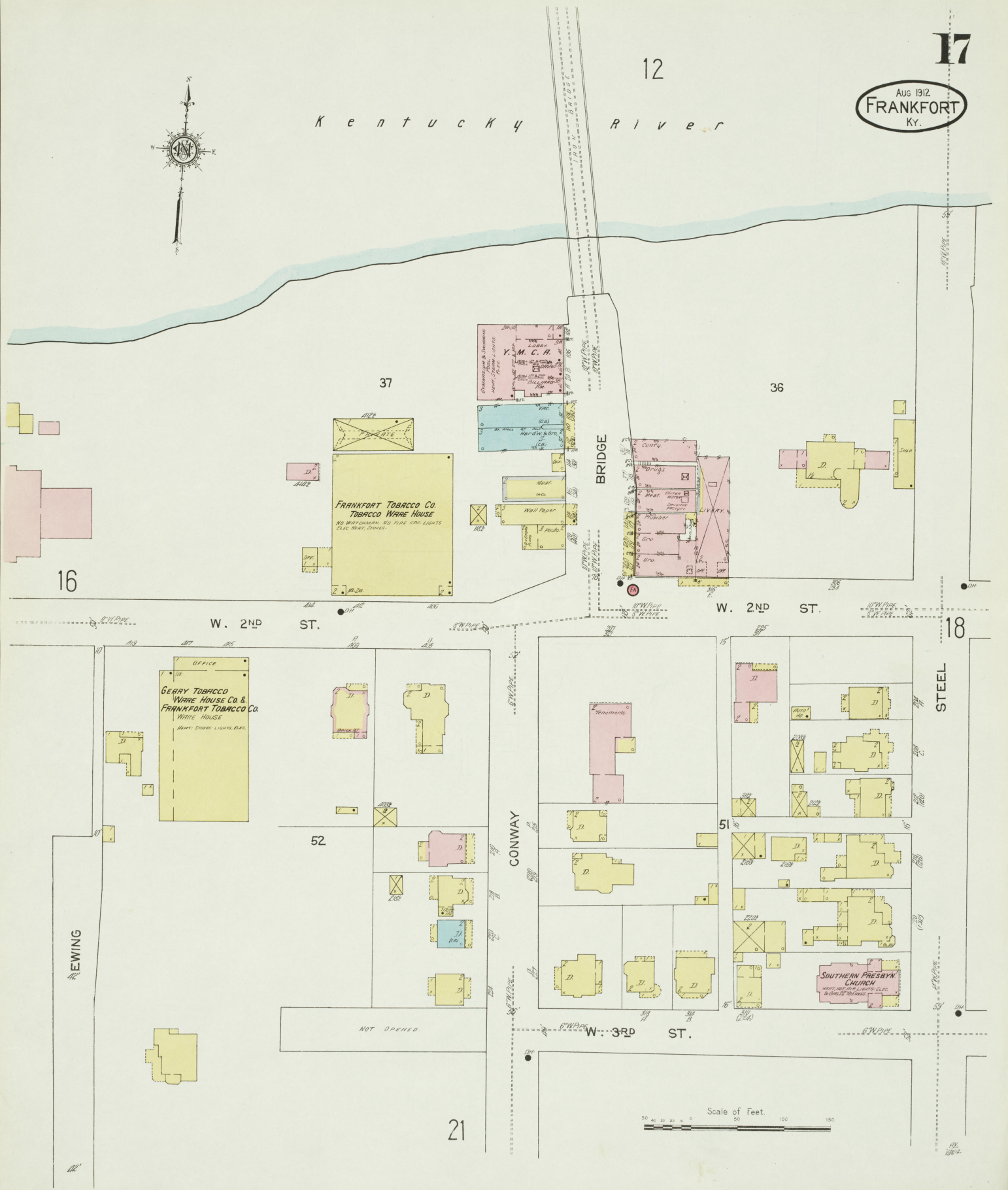
Kentucky River

AUG. 1912  
FRANKFORT  
KY.





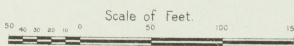
K e n t u c k y R i v e r



FRANKFORT TOBACCO CO.  
TOBACCO WARE HOUSE  
NO REFRIGERATOR NO FIRE OR LIGHTS  
ELEC. HEAT STOVES.

OFFICE  
GERRY TOBACCO  
WARE HOUSE Co. &  
FRANKFORT TOBACCO Co.  
WARE HOUSE  
HEAT. STOVES. LIGHTS. ELEC.

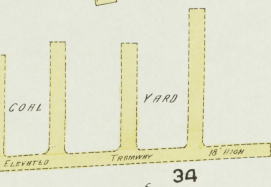
SOUTHERN PRESBY'N  
CHURCH  
HEAT. AND FIRE LIGHTS. ELEC.  
BLINDS. STOVES.





THE FRANKFORT ELEVATOR COAL CO.

NEAR WYOMING  
NO. 1000 - UPPER STREAM  
LUMBER CO. & CO.



34

STEEL

SHELBY

W. BATTLE 35 ALLEY

AV.

19

W. 2<sup>ND</sup> ST.

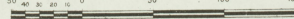
ST.

CAPITOL

W. 3<sup>RD</sup> ST.

ST.

Scale of Feet.



22

17

50

49

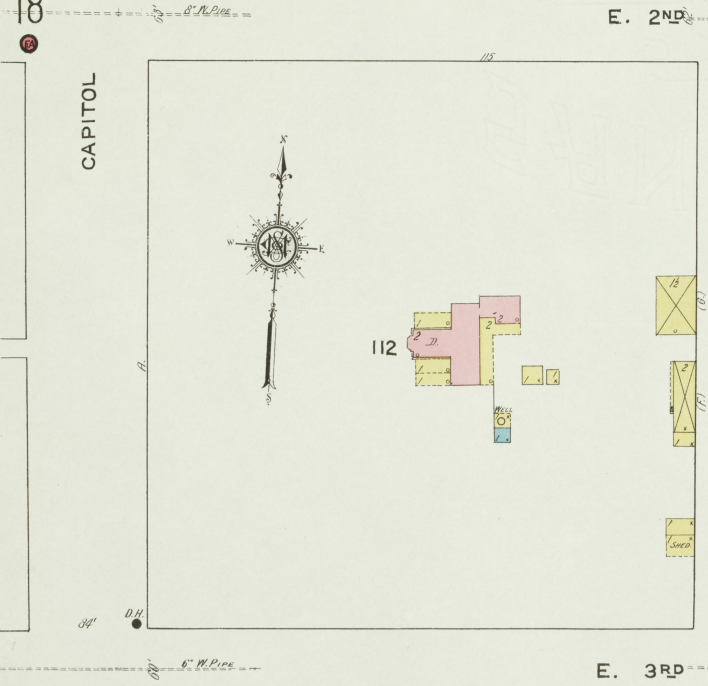
AV.

ST.

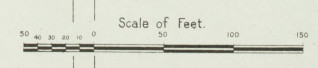
ST.

CAPITAL LUMBER MFG Co.

Notes: Warehouse - Memory floating dock - 50 Springs  
Lumber - Memory - 500000 Spheres - 1000000  
Lumber - 1000000 Spheres - 1000000  
Lumber - 1000000 Spheres - 1000000  
Lumber - 1000000 Spheres - 1000000  
Lumber - 1000000 Spheres - 1000000



23



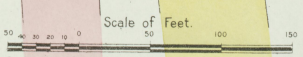
Aug 1912  
FRANKFORT  
Ky.



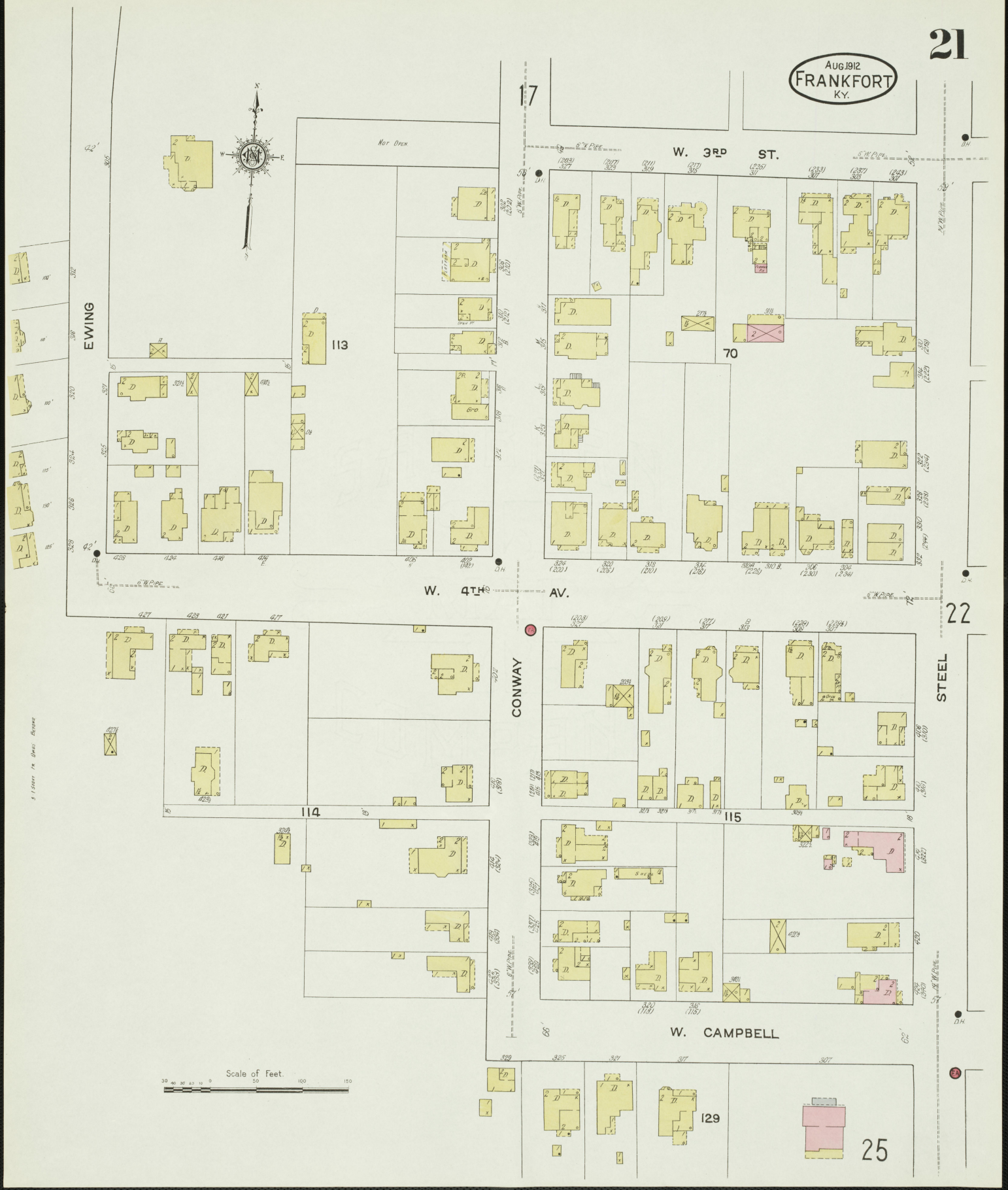
W. A. GAINES & Co., HERMITAGE DISTILLERY.  
Registered Distillery No. 4, 7th District, Franklin Co., Ky.  
PRODUCT HAND MADE, SOUR MASH, BOURBON & RYE WHISKEY.  
MASH CAPACITY 1000 BU. PER DAY, YIELD 4% GALS. PER BU.  
RUN ABOUT 5 MONTHS PER YEAR.  
WOOD TYPE UNDER DOUBLES.

NIGHT WATCHMAN, NEWMAN CLOCK, 6 STATIONS INDIVIDUALLY RUN - POWER STEAM -  
HEAT SEVE, GAFFA STEAM IN OFFICE, STEAM IN DISTILLERY & BOTTLING HOUSE -  
INDIRECT STEAM IN BONDED WARE HOUSES, FUEL COAL & WOOD -  
LIGHT ELECTRIC, I. P. IN DISTILLERY, OFFICE, CLEAN DRY HOUSE & MASH FLOOR -  
DUG & FACTORY IN BONDED BOTTLING HD. - SIGNAL OIL LANTERNS IN WARE HD. -  
DRINKELL, AUTOMATIC SPRINKLER HD. - GIP SYSTEM IN B.L. WARE HD. DISTILLERY,  
MASH FLOOR, BOTTLING HD. - DRESSER SHOPS & CLEAN DRY HD. - SPRAWLERS FED BY  
CITY WATER - MASHING PRESSURE - GELLES FOR 25 INCH & 4 SMALL PINE BUNDS  
COMBINED CAPACITY 850 GALS. PER MIN. - 4500 GAL. PRESSURE TANK ON 3rd FLOOR  
OF DISTILLERY - SPRINKLER HEADS SPACED 8' X 8'

BONDED WARE HD.	A	OFFICE	1200 BLS.	PATENT ARCHES	9 TIERS	HEAT INDIRECT STEAM
"	B	"	2500 "	"	"	"
"	C	"	6000 "	"	6 "	"
"	D	"	5000 "	"	6 "	"
"	E	"	3800 "	"	3 1/2 "	"
"	F	"	3000 "	"	2 1/2 "	"
"	G	"	1000 "	"	6 "	"
"	H	"	1000 "	"	6 "	"
"	I	"	500 "	"	6 "	"
"	K	"	1500 "	"	2 1/2 "	"



Aug 1912  
FRANKFORT  
KY.



STEEL

25

AUG. 1912  
FRANKFORT  
KY.

18

W. 3RD ST.

6" W. PIPE

84'



AV.

23

21

W. 4TH AV.

6" W. PIPE

STEEL

SHELBY

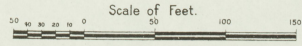
CAPITOL

116

117

W. CAMPBELL

25



19

E. 3RD ST.



AV.

22

E. 4TH AV.

24

CAPITOL

LOGAN

MURRAY

118

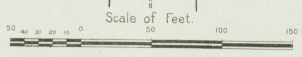
119

43

48

E. CAMPBELL

26



R  
I  
V  
E  
R  
  
C  
H  
U  
C  
K  
Y



20

E. 3RD ST.

W. A. GAINES & CO. HERMITAGE DISTILLERY.  
For Report See Sheet 20.

44

M.

45

DISTILLERY

23

E. 4TH AV.

AMERICAN FIBER REED CO. CHAIR FACTORY

MURRAY

FOWLER

47

46



Scale of Feet. 50 100 150

26

E. CAMPBELL ST.



E. CAMPBELL

E. TODD

E. STATE

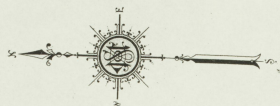
26

Aug. 1912  
FRANKFORT  
KY.

25

CAPITOL

AV.



127

126

W. STATE

22

SHELBY

W. CAMPBELL

W. TODD

130

131

16

COKE

128

NEW

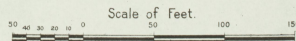
SHORT

STEEL

129

21

N O E X P O S U R E





E. CAMPBELL

120  
GRAYLE & LONGMORE TOBACCO  
FACTORY  
TOBACCO FACTORY  
TOBACCO FACTORY  
TOBACCO FACTORY

E. TODD

85' AV.

CAPITOL

LOGAN

MURRAY

MURRAY

26

26

24

122

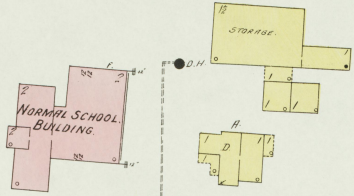
Scale of Feet

Kentucky River



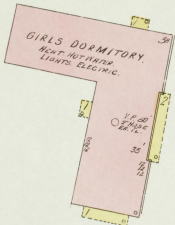


Aug 1912  
FRANKFORT  
KY.

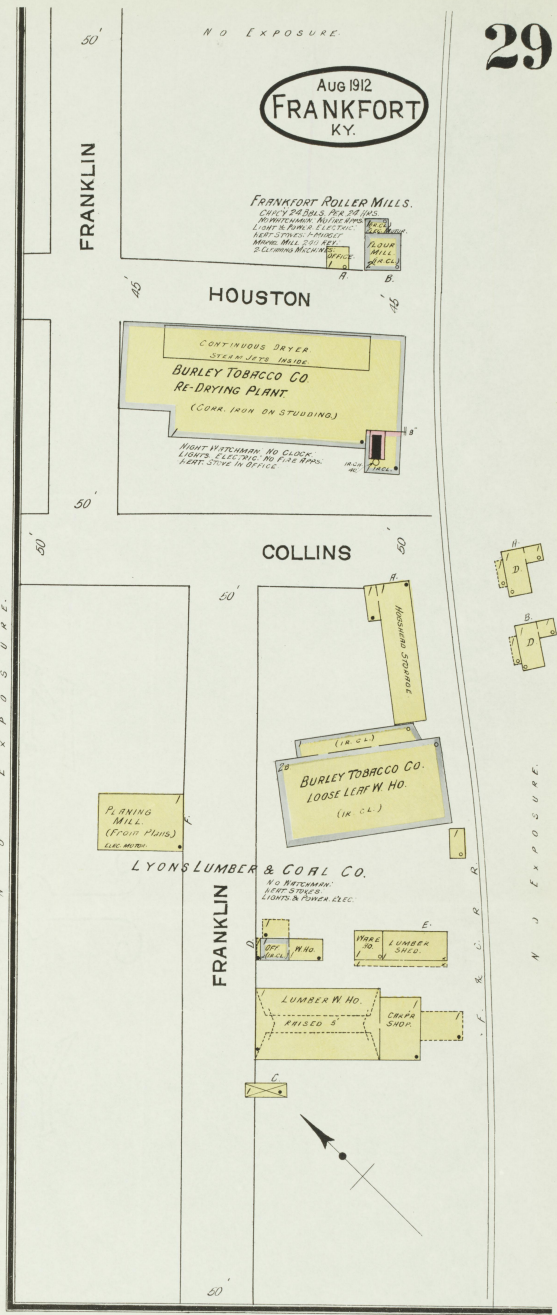
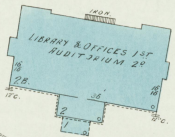
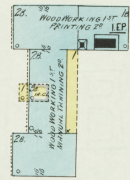


STATE NORMAL & INDUSTRIAL INSTITUTE (NEGRO)

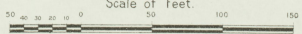
HEAT STEAM, HOT WATER & STYES (GAS & POWER) ELEC LEP  
WATERED AS SHOWN, SUPPLIED BY 36" DUCT IRON CLEVERED TO



MECHANICAL BUILDING



Scale of Feet



Aug 1912  
FRANKFORT  
KY.

**KENTUCKY DISTILLERIES & WAREHOUSE CO**  
**J & J M STAFFEL DISTILLERY**  
Registered Distillery No 91-7<sup>th</sup> District Franklin Co, Ky.  
PRODUCT Bourbon Sour Mash Whisky (120000 BUSHELS)

CAP'S 100 BUSHELS - NOT IN OPERATION -  
NIGHT WATCHMAN IN RUNNING SEASON -  
SUPERINTENDENT LIVES ON PREMISES ALL YEAR -  
HEAT & POWER SYSTEM LIGHTS ON LAWRENCE  
PIKE - COAL, WIRE, PAINT & BALS WELLS BURNING

**STEWART HOME FOR FEEBLE MINDED**

WATERMAN - HEAT - STEAM  
FUEL - COAL - LIGHTS - ELECTRIC -  
NOT IN HOME

**KENTUCKY DISTILLERIES & WAREHOUSE CO**  
**Wm. J. N. BLANKMERE - ARNOLD SPRING DISTY**  
Registered Distillery No 96-7<sup>th</sup> District Franklin Co, Ky.  
DISTILLERY DISMANTLED & DISCONTINUED

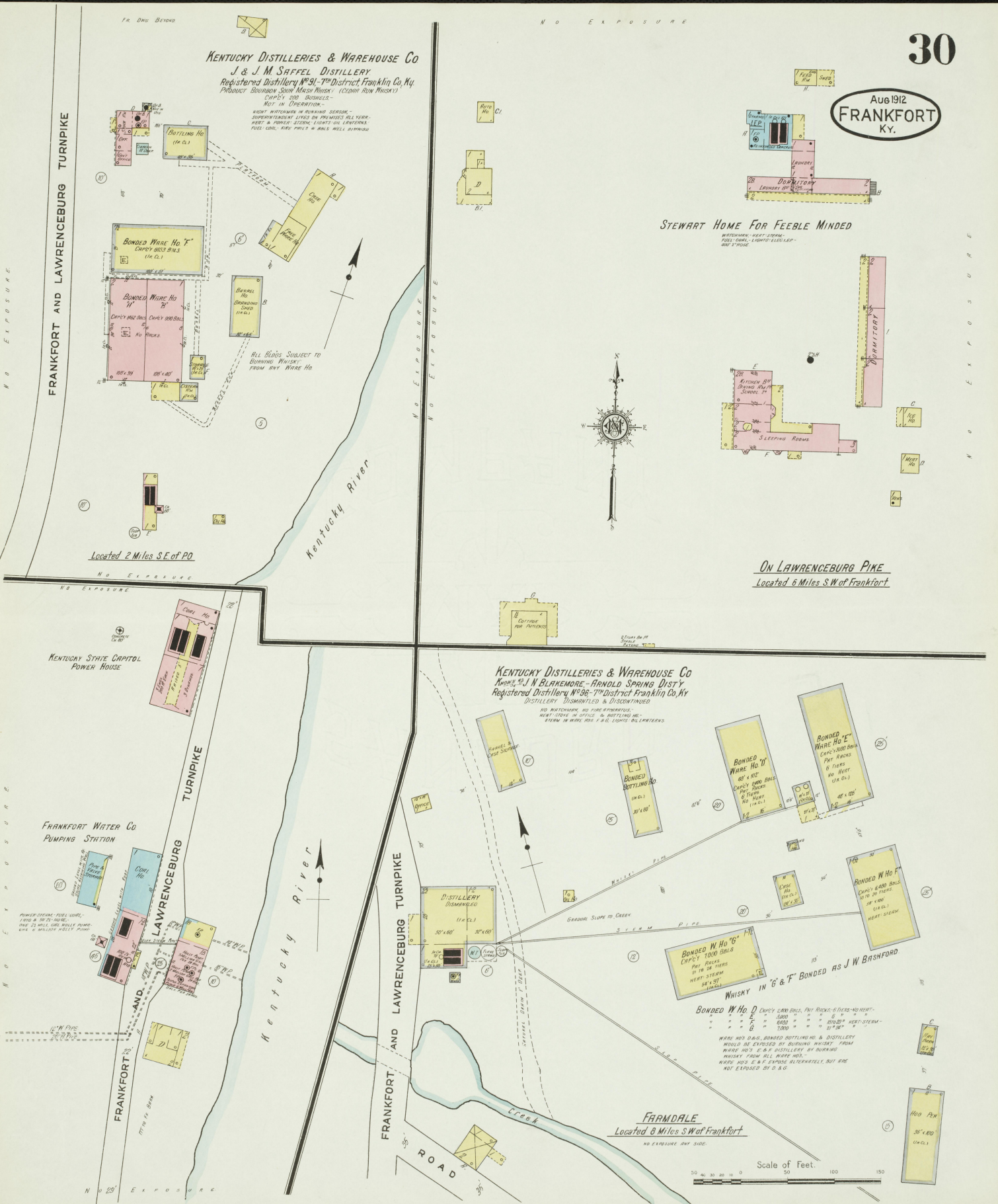
NO WATCHMAN - NO FIRE PROTECTIVE  
HEAT - STEAM IN STILLS & BOTTLING DE-  
STEM IN WARE HO'S & LIGHTS - BLENDERS

**BONDED W H O D** CAP'S 1000 BALS  
HEAT - STEAM  
WARE AND BARS - BONDED BOTTLING NO. & DISTILLERY  
WOULD BE EXPOSED BY BURNING WHISKY FROM  
WARE HO'S - E & F DISTILLERY BY BURNING  
WHISKY FROM ALL WARE HO'S.  
WARE HO'S E & F EXPOSED ALTERNATELY, BUT ARE  
NOT EXPOSED BY D. W. O.

**FARMDALE**  
Located 8 Miles S.W of Frankfort

NO EXPOSURE ANY SIDE

Scale of Feet. 0 50 100 150



Located 2 Miles S.E. of PO

ON LAWRENCEBURG PIKE  
Located 6 Miles S.W of Frankfort

KENTUCKY STATE CAPITAL  
POWER HOUSE

FRANKFORT WATER CO  
PUMPING STATION

NO EXPOSURE

NO EXPOSURE

NO EXPOSURE

NO EXPOSURE

NO EXPOSURE

NO EXPOSURE

NO EXPOSURE

NO EXPOSURE

NO EXPOSURE

NO EXPOSURE

NO EXPOSURE

NO EXPOSURE

Aug. 1912  
**FRANKFORT**  
KY.

**THE GEO. T. STAGG COMPANY**

Formerly E. H. TAYLOR JR. CO.  
Formerly NEW YORK & KENTUCKY CO. & CARLISLE DISTILLERY

**KENTUCKY RIVER DISTILLERY.**  
Registered Distillery No 2,  
7th District, Franklin Co., Ky.

**O. F. C. DISTILLERY.**  
Registered Distillery No 113,  
7th District, Franklin Co., Ky.

PRODUCT: Bourbon & Rye Sour Mash Whisky -  
Mash Capacity 1200 Bu. per Day, Yield 40 Gals. per Bu.  
Run about 6 months per year -  
Steam Double

PRODUCT: Bourbon & Rye Hand Made Sour Mash Whisky -  
Mash Capacity 600 Bu. per Day, Yield 40 Gals. per Bu.  
Run about 6 months per year -  
Steam Double

WATER TOWER - NEW MASH CHECK - 12 STERILIZERS - HEAT EXCHANGERS - POWER & HOT STEAM - LIGHTS - ELECTRIC 1.6 D IN. DISTILLERS AND BOTTLING HOUSES - ACETYLENE GAS IN OFFICES, REST ROOMS - CONTAINERS IN WARE HOUSES - HOT WATER PIPE AND HOSE AS SHOWN IN K.R.D. DISTILLERY, SUPPLIED FROM PLUMBING WORKS

Located 1 1/2 Miles N. of Court Ho.  
NO EXPOSURE ANY SIDE

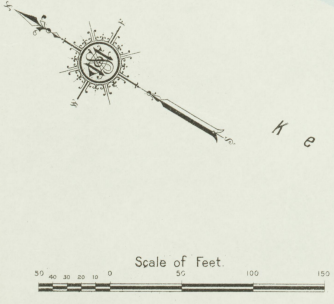


**K.R.D. Bonded Ware Ho. No. 228** : Capacity - 3000 Bbls - Patent racks in part of bldg - heat steam

No 228	3500	NO	NO	NO	HEAT-STEAM
No 228	20,000	NO	NO	NO	HEAT-STEAM
No 1138	3,000	NO	NO	NO	HEAT-STEAM
No 1138	10,000	NO	NO	NO	HEAT-STEAM
No 1138	10,000	PATENT	NO	NO	HEAT-STEAM
No 1138	22,500	NO	NO	NO	HEAT-STEAM
No 1138	300	NO	NO	NO	HEAT-STEAM

FREE

ALL WARE HOUSES WOULD PROBABLY BE EXPOSED TO BURNING WHISKY FROM ANY ONE WARE HOUSE



Kentucky River









