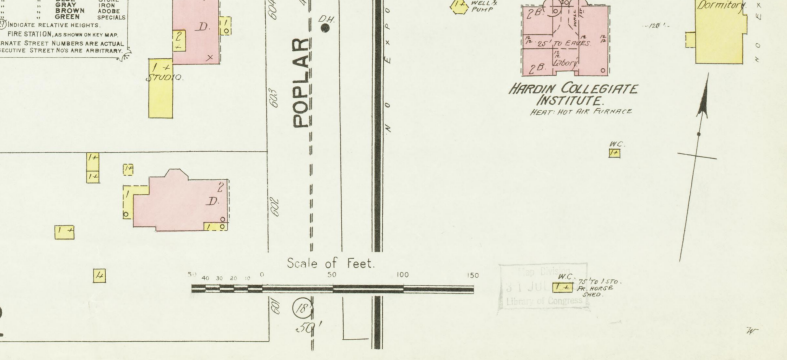
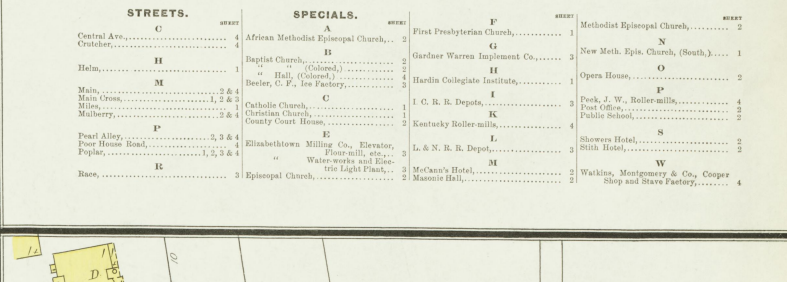
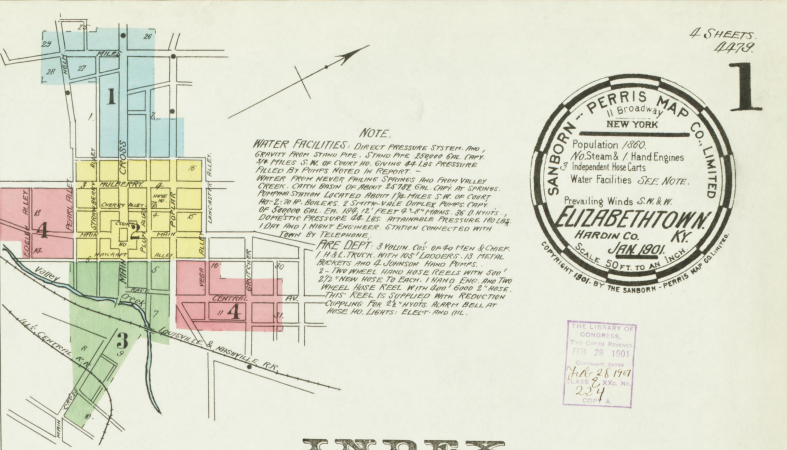
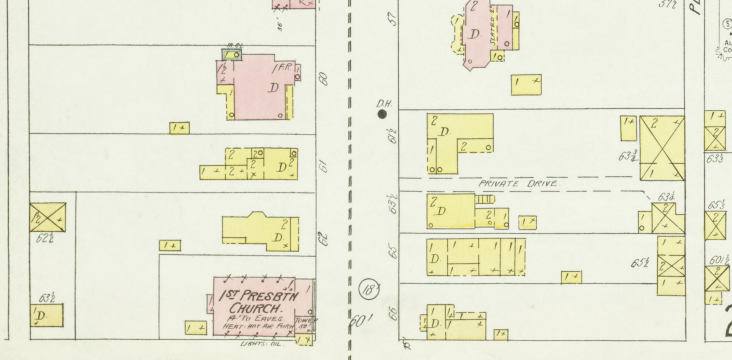
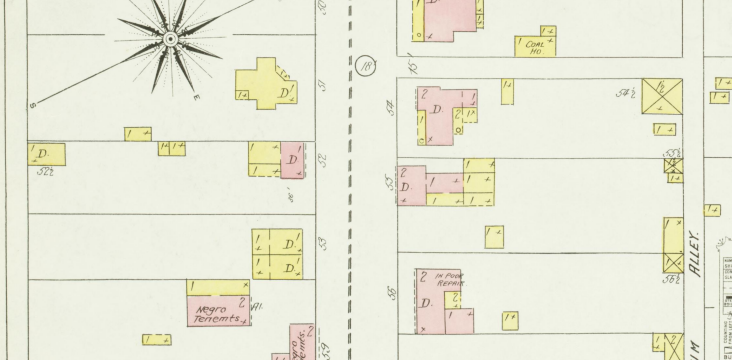
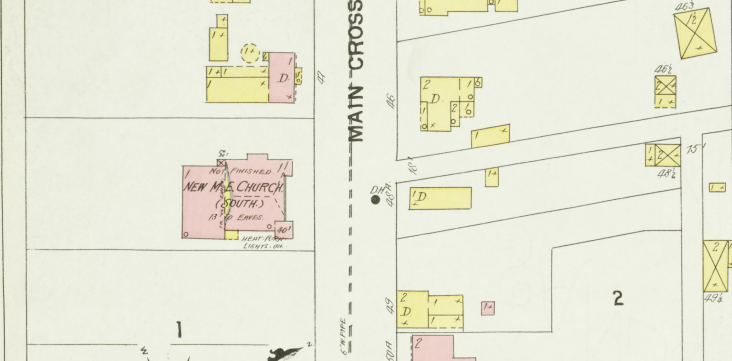
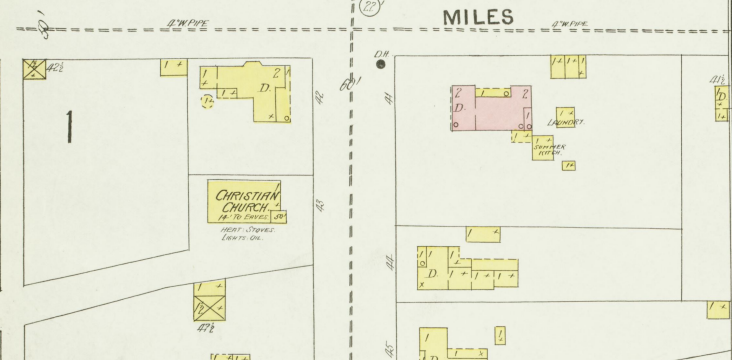
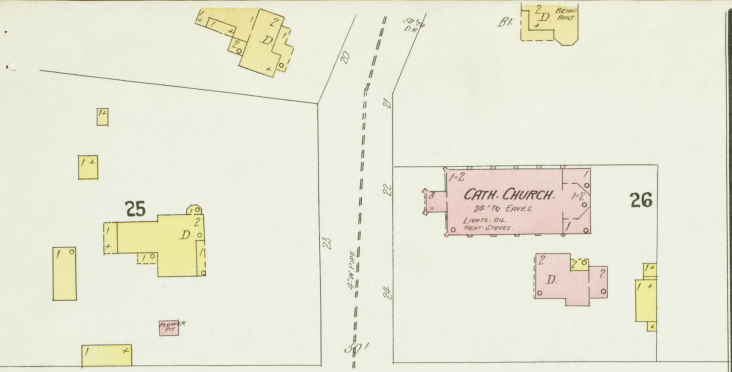


THE LIBRARY OF
CONGRESS
1155 DUSTY LANE
WASHINGTON, D.C. 20540
Acquired by the Library of Congress
1974
239

NOTE.
WATER FACILITIES. DIRECT PRESSURE SYSTEM AND
GRANTS FROM STONE PINE, STONIA PINE, BERRY OIL, OAK
OIL, TRICE, 57 1/2 AC. OF OAKS AND OAKS AND L.S. PRESSURE
PILES BY PUMPS, METERED BY REPORT.
WATER FROM MOUNTAIN SPRINGS AND FROM HILL
CREEK, CATHY BASIN ON ABOUT 1500 AC. OAKS AND STONIA
PINE. CATHY BASIN LIFTED ABOUT 75 FEET. 1 1/2 MI. OF CATHY
AND 2 1/2 MI. OF BERRY OIL. 5 1/2 MI. OF STONIA PINE. POWER FROM
OF STONIA PINE OIL. 100 1/2 FEET. 1 1/2 MI. OF OAKS AND
DOMESTIC PRESSURE GAS L.S. RETAINING PRESSURE. HILL
LIFT AND PUMP ENGINEER STATION CONNECTED WITH
TOWN BY TELEPHONE.
FIRE DEPT. 3 YOUNG CO. ON MAIN ST. & CHURCH
ST. 1 1/2 MI. FROM MOUNTAIN SPRINGS. 12 FEET.
ROCKETS AND 4 JOHNSON PUMP PUMPS.
2 1/2 MI. FROM HILL CREEK. HILL CREEK WITH 500'
3 1/2 MI. FROM HILL TO CATHY. 1 MI. FROM HILL TO OAK
HILL. HILL CREEK WITH 1000' OAKS AND 2 1/2 MI.
THIS AREA IS SUPPLIED WITH WATER FROM
CATHY. THE 2 1/2 MI. FROM HILL TO OAKS
HAS NO LIGHTS, ELECT. AND OIL.

INDEX.

STREETS.	SPECIALS.	F.	W.
Central Ave. 4	African Methodist Episcopal Church, .. 2	First Presbyterian Church, .. 1	Methodist Episcopal Church, .. 2
Cutcher, .. 4	Baptist Church, .. 2	Gardner Warren Implement Co., .. 1	New Meth. Epis. Church, (South), .. 1
Helm, .. 1	Hall, (Colored), .. 4	Hardin Collegiate Institute, .. 1	Opera House, .. 2
Main, .. 2 & 4	Beeler, C. L., Ice Factory, .. 3	I. C. R. R. Depot, .. 1	Post Office, .. 1
Main Cross, .. 1, 2, 3 & 4	Catholic Church, .. 1	Kentucky Roller-mills, .. 4	Public School, .. 1
Military, .. 2 & 4	Christian Church, .. 1	L. & N. R. R. Depot, .. 1	Shower Hotel, .. 2
Poplar, .. 1, 2, 3 & 4	County Court House, .. 1	Flour-mill, etc., .. 2	St. John Hotel, .. 1
Poplar, .. 1, 2, 3 & 4	Elizabethtown Milling Co., Elevator, .. 1	Water-works and Electric Light Plant, .. 2	Walker, Montgomery & Co., Cooper Shop and Stone Factory, .. 4
Race, .. 3	Episcopal Church, .. 2	Mason's Hall, .. 2	



KEY

STABLE
BUILDINGS COLORED YELLOW ARE FRAME
RED BROOK
BROWN IRON
GREEN IRON
SPECIALS
INDICATE RELATIVE HEIGHTS
FIRE STATION, AS SHOWN BY KEY
ALTERNATE STREET NUMBERS ARE ACTUAL
CONSECUTIVE STREETS ARE ARBITRARY

Scale of Feet.
0 50 100 150

MILES

MILES

Scale of Feet.
0 50 100 150

JAN 1901
ELIZABETHTOWN
KY.

2
4

LANCASTER

ALLEY

POPLAR

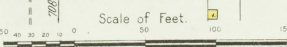
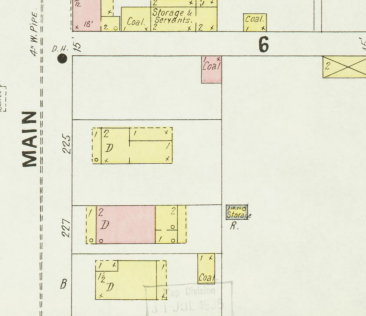
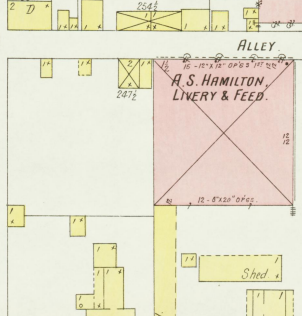
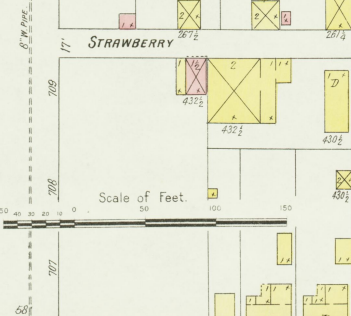
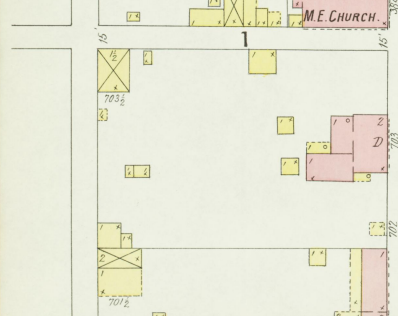
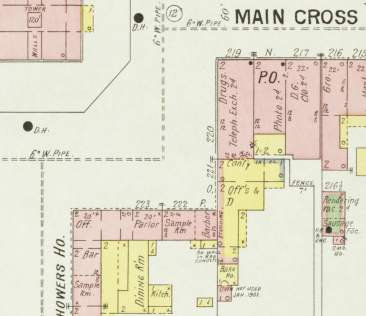
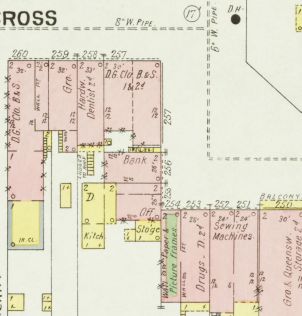
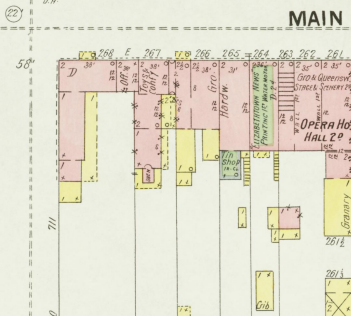
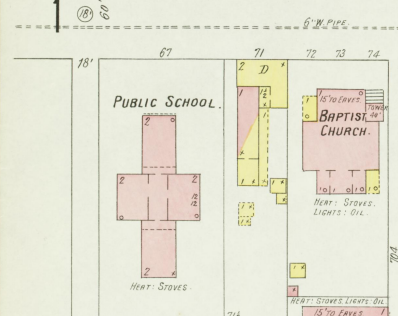
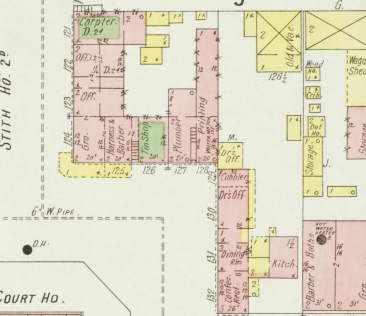
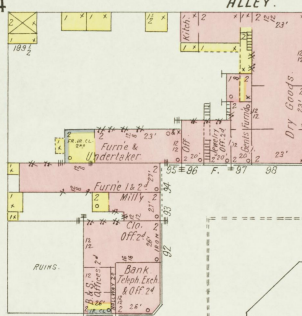
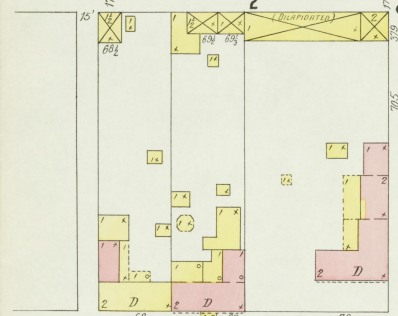
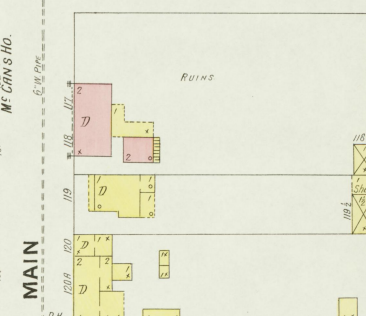
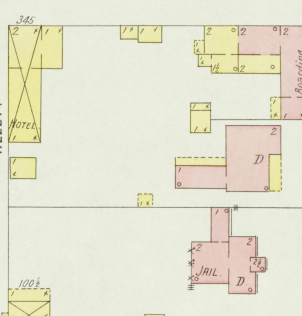
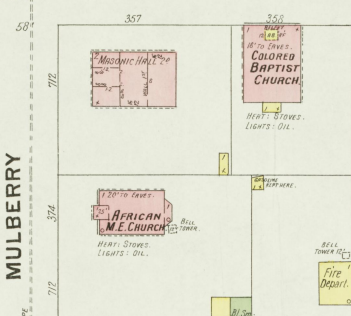
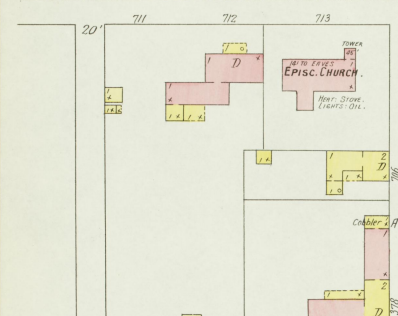
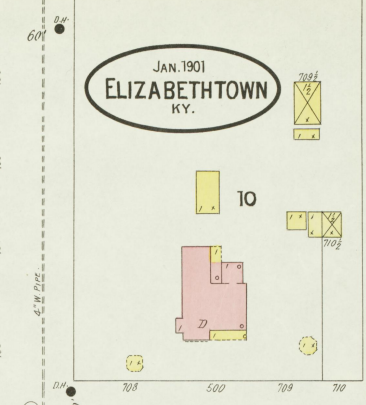
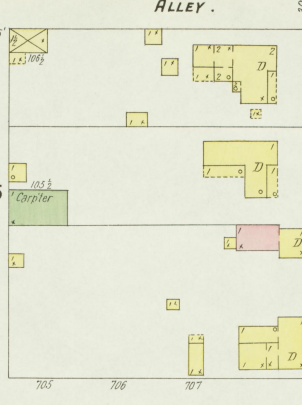
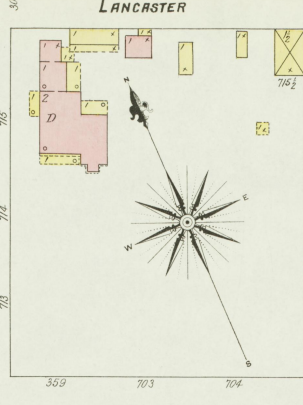
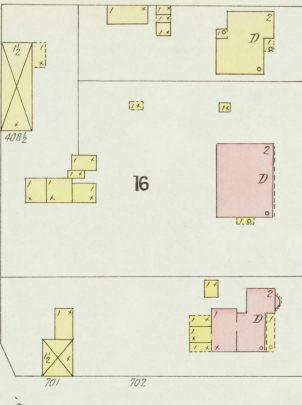
MULBERRY

PLUM

MAIN CROSS

COURT HO.

MAIN CROSS



HELM ST.

PEARL

ALLEY

MAIN

4

JAN 1901
ELIZABETHTOWN
KY.

3

POPLAR

4



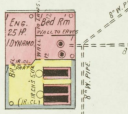
Scale of Feet.
0 50 100 150

C. E. BEELER, ICE FAC.
Run by Six Men of the Town. Power
Stream No Rent. Fuel, Coal, Lights.
Circular Covers. 12" High on Posts. 7 1/2"
HOLE KEYS IN BRACKET. 3/4" HOLE CONNECTION
ON BLUE PAPER, AND END OF SOME BONES.
NEW SET OF SMALL HOLES. 7" BARRELS AND
BANDS ON HOLES.

1/4 Miles N.W. of Court Ho.

About 1/4 Miles S.W. of Court Ho.

ELIZABETHTOWN WATER WKS. & ELEC. LIGHT PLANT.
HEAT, STEAM, FUEL, COAL, LIGHTS.
ELEC. 30' 9" HOSE. 25' 1" HOSE.



Cemetery.

MAIN CROSS ST.

7

