

INSURANCE MAPS of Maysville KENTUCKY

MASON COUNTY

Sanborn-Perris Map Co. Limited

SCALE 50 FT. TO AN INCH
11 BROADWAY, NEW YORK

Sept 1901

Copyright 1901, by the Sanborn-Perris Map Co. Limited

Population 3000 - Prev. Winds S.W.

WATER FACILITIES Reservoir system of water works Water supply from Ohio River, via reservoir capacity 21 million galls, filled by Blake steam pumps of 3 million galls capy per 24 hours.
Auxiliary system - One Gordon duplex pump, capacity one million galls and one Mc-Gowan duplex pump capacity 1/2 million galls per 24 hours.
13 Miles of water pipes, 6" to 14" diam.
31 Double hydrants
Average Pressure 150 lbs. in business section.
22 Public cisterns - capy 400 bbs. each.

FIRE DEPARTMENT Volunteer. Five independent companies each having its own chief. Combined membership of 172 men.
Five alarm by bell
7 Hand engines
1 Hook & ladder truck } Drawn by hand
3 Hose reels }
\$800.75 23 Hoses
Principal streets Macadamized.

INDEX.



KEY

Buildings with any roof
Shaded red in any roof
Shaded yellow in any roof
Shaded blue in any roof
Shaded green in any roof
Frame partition
Chimney
Iron standard
Windows and door shutters
Windows in stone
Windows in brick
Windows in concrete
Windows in terra cotta
Windows in tile
Windows in terra cotta
Windows in tile
Windows in concrete
Windows in terra cotta
Windows in tile

No exposure

Scale 100ft to an inch

No exposure

STREETS.

Bank, B	100-326	*7 & 9
Beech, " "	100-325	11
Blue Run Pike, " "	1-45	8
Boone, " "	101-255	*6
Bridges, " "	212-229	*7
Casho, C	100-325	13
Center, " "	1200-1245	13
Chester, " "	100-329	10
Commerce, " "	101-329	9
Cottage, " "	300-229	13
Court, " "	300-229	4
Fleming Pike, F	300-321	7
Forest Ave, " "	301-345	9
Front, E, " "	386-522	14
" " " "	401-525	*10
" " " "	601-721	*11
" " " "	800-1005	*13
" " " "	1-45	*9
" " " "	2-140	*8
" " " "	101-149	*6
" " " "	1-25	*2
" " " "	2-114	*8
" " " "	25-145	*4
" " " "	300-345	9
" " " "	400-521	10
" " " "	600-725	11
" " " "	800-925	12
" " " "	1-25	*5
" " " "	26-144	*4
" " " "	300-247	3
" " " "	300-422	2
Grant, G	100-155	8
Grave Alley, " "	300-325	7
Gray Alley, " "	100-229	10
January, J	300-223	7
Lee, L	300-229	6
Lexington, " "	100-324	*11
" " " "	101-321	*10
" " " "	401-425	*14
Limestone, " "	100-326	*6
" " " "	101-327	*5
" " " "	400-515	8
Lindsey, " "	100-325	11
Lower, " "	1-45	8
Maddox Alley, M	100-327	5
Main, " "	100-327	5
Market, " "	400-427	8
New, N	100-325	11
Patton Alley, P	100-325	11
West, " "	100-325	11
Pelham, " "	100-325	11
Phisher Alley, " "	100-325	11
Plan, " "	300-408	*7
" " " "	301-327	*6
" " " "	401-409	*8
" " " "	100-325	10
Poplar, " "	100-325	10
Prospect, " "	100-325	10
Second, E, S	1-56	5
" " " "	100-105	6
" " " "	200-345	9
" " " "	400-521	10
" " " "	600-727	11
" " " "	800-1019	12
" " " "	1120-1255	13
" " " "	1-27	*5
" " " "	25-147	*4
" " " "	200-243	3
" " " "	300-415	2
Short, " "	100-228	8
" " " "	101-227	*2
" " " "	1-135	*3
Sixth, E, " "	200-357	7
" " " "	100-319	4
Sutton, " "	100-319	4
Third, E, T	1-40	5
" " " "	100-151	6
" " " "	200-252	7
" " " "	300-345	9
" " " "	400-521	10
" " " "	600-727	11
Third, E, " "	800-835	12
" " " "	101-225	*11
" " " "	1-19	5
" " " "	20-145	4
" " " "	200-233	3
" " " "	300-332	2
" " " "	300-332	2
Tyler, " "	100-224	*4
" " " "	101-225	*3
" " " "	100-325	11
Union, U	100-224	*4
" " " "	101-225	*3
" " " "	300-325	11
Wall, W	100-224	*4
" " " "	101-225	*3
Washington, " "	100-325	11
" " " "	near 4th	8
" " " "	800-1021	12
" " " "	12 & 13	
Wood, " "	100-224	*4
" " " "	101-225	*3
Williams, " "	100-325	11
" " " "	12 & 13	

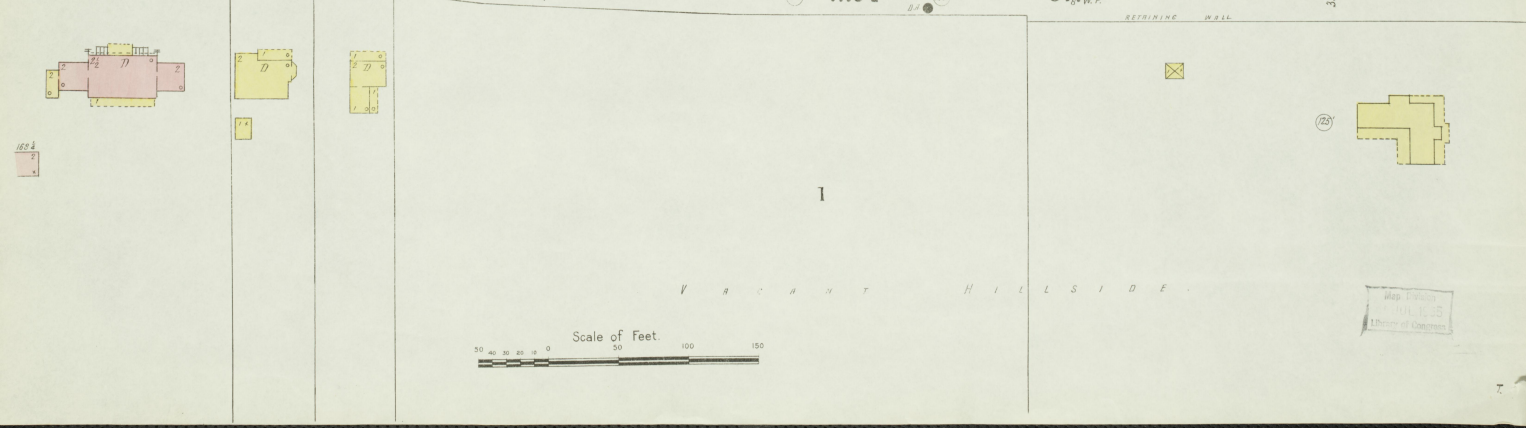
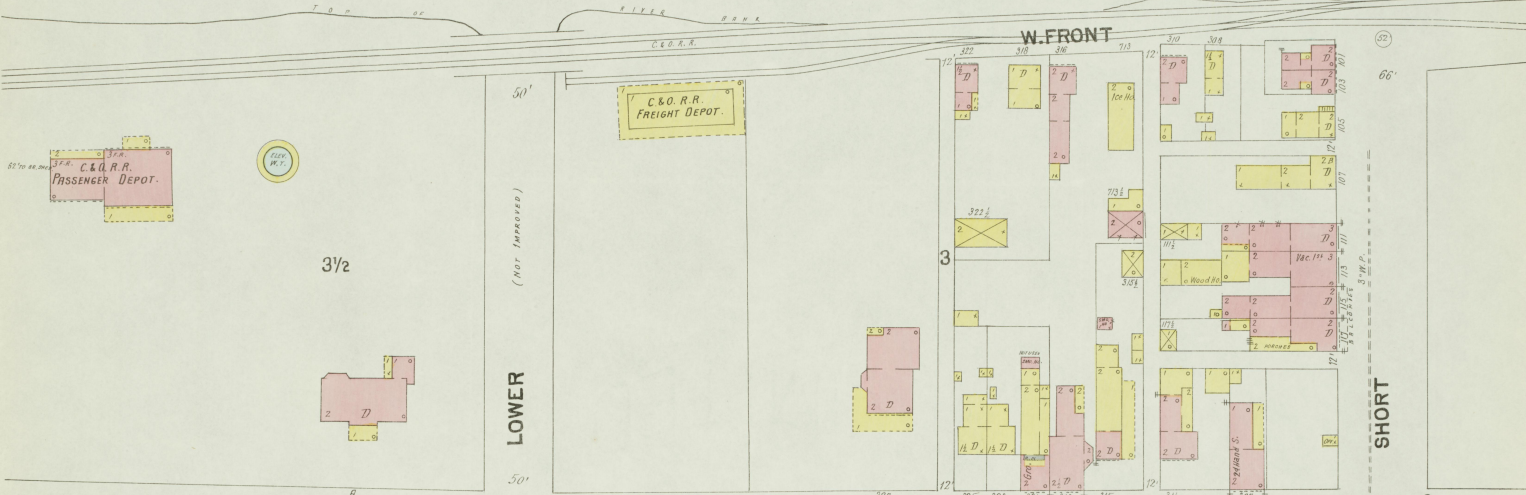
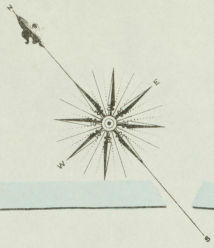
SPECIALS.

Cox Building, E. Third Street, " "	5
" " Row, " "	5
Dodson, J. H., Coal-yard, " "	3
" " Grant Warehouses, " "	4
Episcopal Church, " "	5
Fair Grounds, " "	1
First Baptist Church, " "	5
Presbyterian Church, " "	4
Fuel Gas Plant, " "	15
Gable Bros., Coal-yard, " "	3
German Church, " "	3
Grand View Hotel, " "	5
Hall, J. H., Plow Co, " "	11
Hayes Female Seminary, " "	8
Hauser, E. T., Flour-mills, " "	7
January & Wood Co's Cotton-mill, " "	3
Kammers Ho., " "	6
Keith Schroeder Harness Co, " "	5
Kentucky Planing mill, " "	4
Lida, C., Distillery, " "	15
Limestone Mills, " "	15
L. & N. R. R. Depot, " "	7
" " Locomotive-house, " "	14
Magnolia Mills, " "	6
Mason County Infirmary, " "	14
Mathews, W. B. & Co, Lumb'g'd, " "	4
" " Saw & Plg mill, " "	9
" " Tob. W. H., " "	9
Maysville Bottling & Extract Wks, " "	11
White Block, " "	2
Winter & Everett, Warehouses, " "	5
Wormald, W., Coal & Salt Elevr, " "	6
Zweigler's Slaughter-house, " "	13

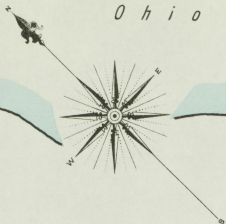
Ohio River

SEP 1901
MAYSVILLE
KY.

2



Map drawn
JUN 1901
J. H. HARRIS



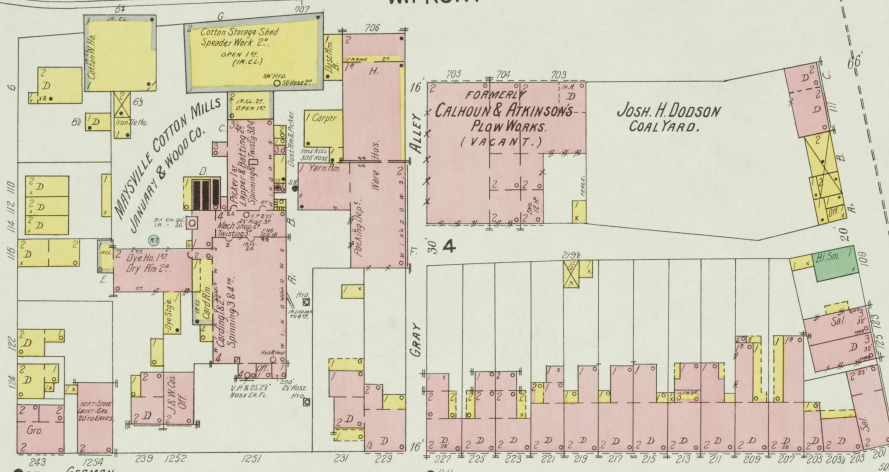
Top of River Bank

W. FRONT

FORMERLY
CALHOUN & ATKINSON
PLOW WORKS.
(VACANT.)

JOSH. H. DODSON
COAL YARD.

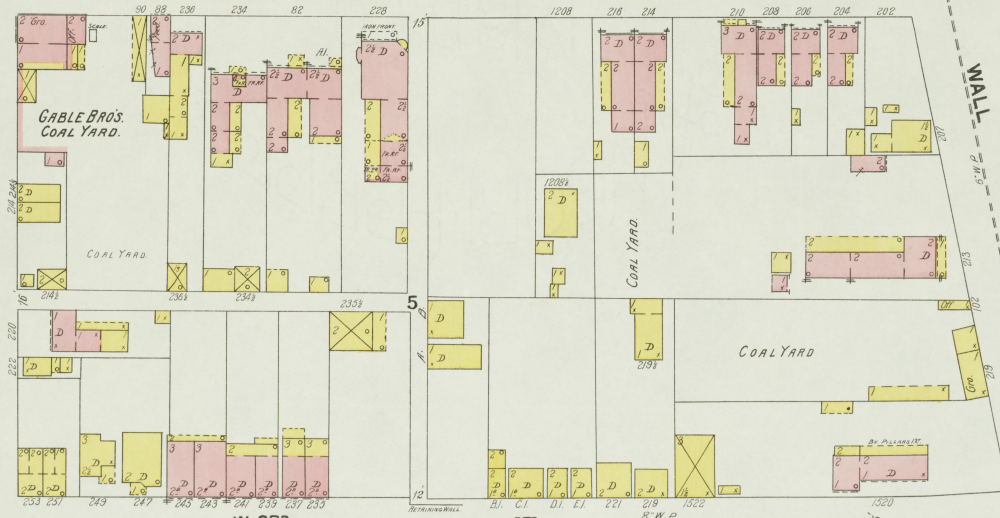
66'



SHORT

W. 2ND ST.

4



GABLE BROS.
COAL YARD.

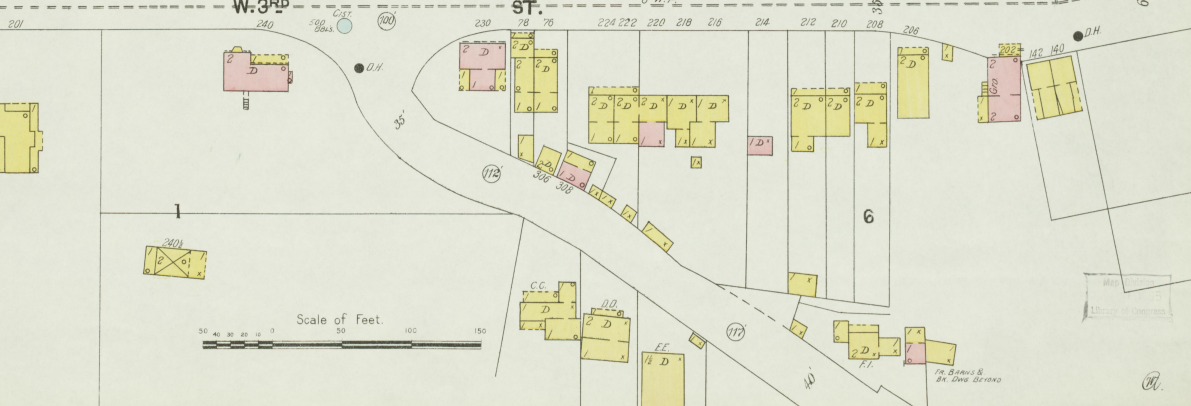
COAL YARD

COAL YARD

2

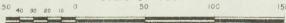
W. 3RD ST.

66'



6

Scale of Feet.



Историческая карта Мейсвилля, Кентукки, 1901 года. Карта была составлена на основании данных, полученных от владельцев и арендаторов земельных участков. Карта показывает расположение промышленных предприятий, складов, улиц и других объектов. Масштаб 1:10000.

Sec 1901
MAYSVILLE
KY.

4

W. FRONT

WASHINGTON
OVERLY Wd.

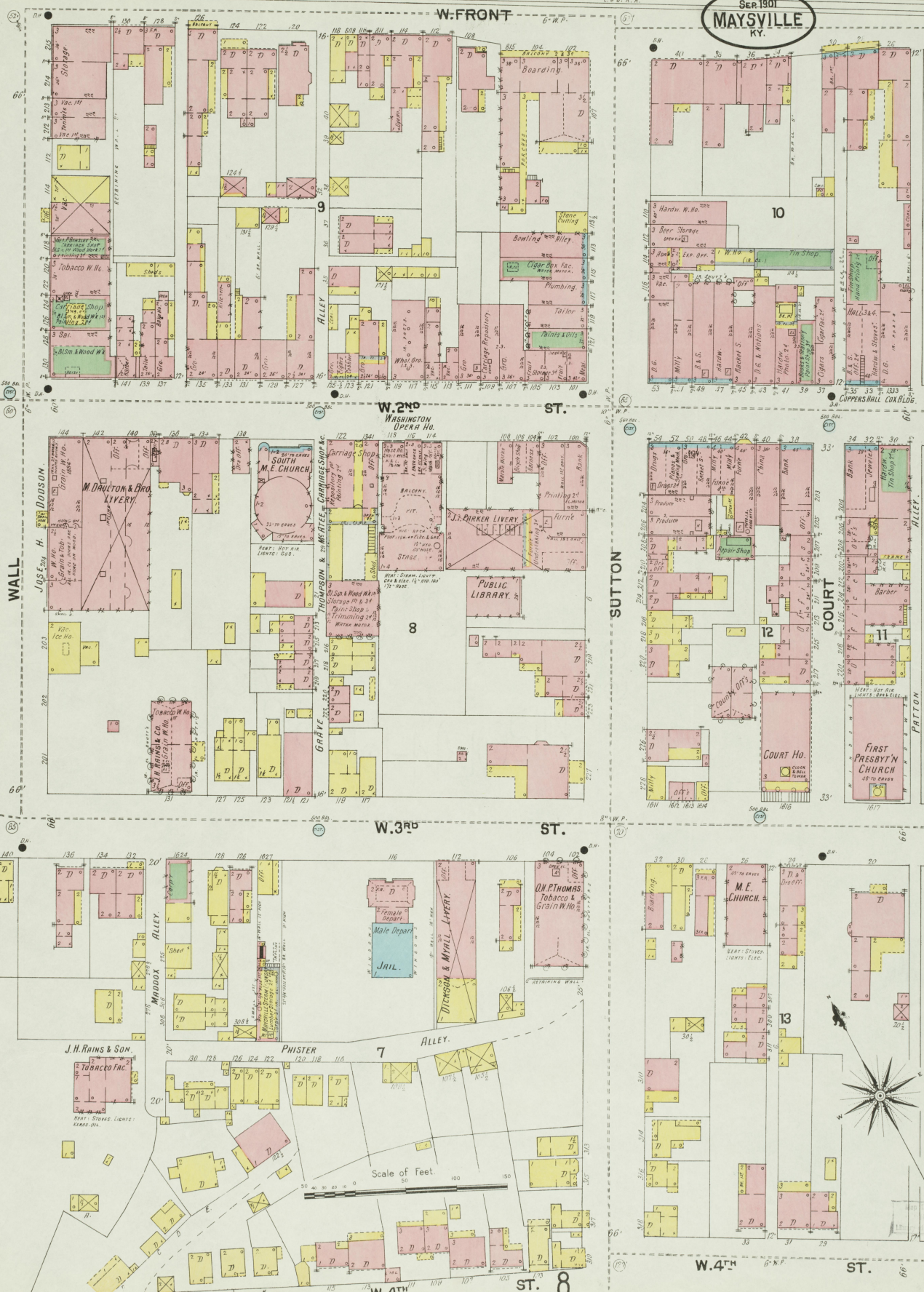
W. 3RD ST.

W. 4TH ST.

SUTTON

COURT

PATTON



3

8

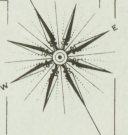
10

12

13

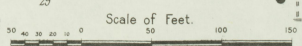
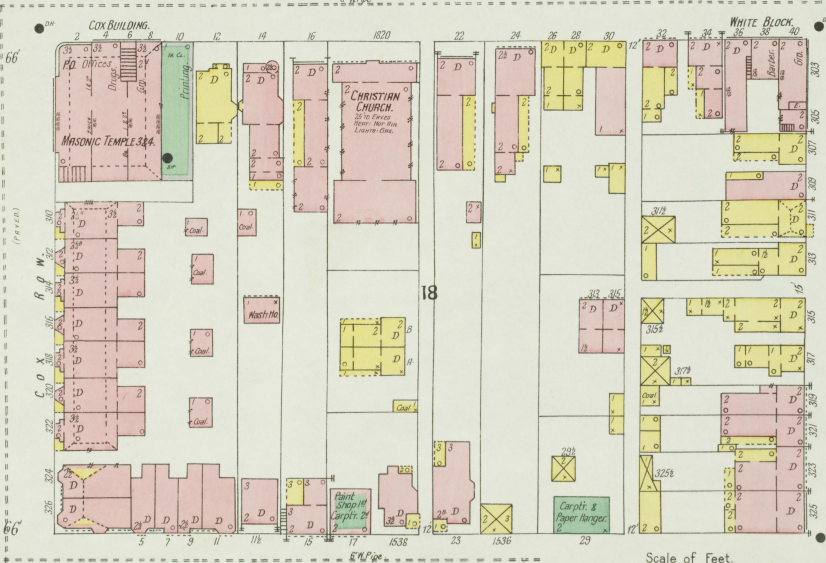
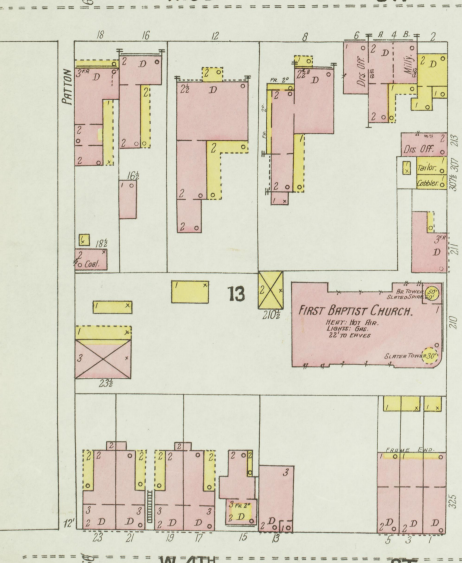
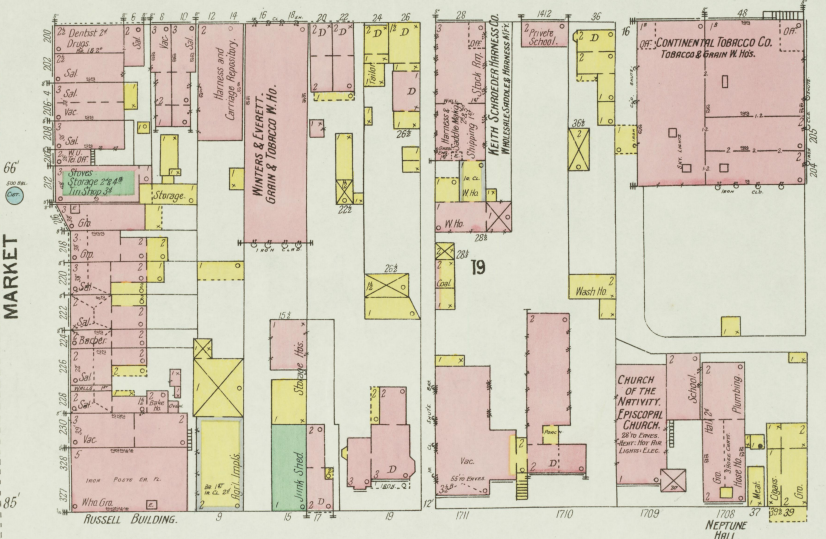
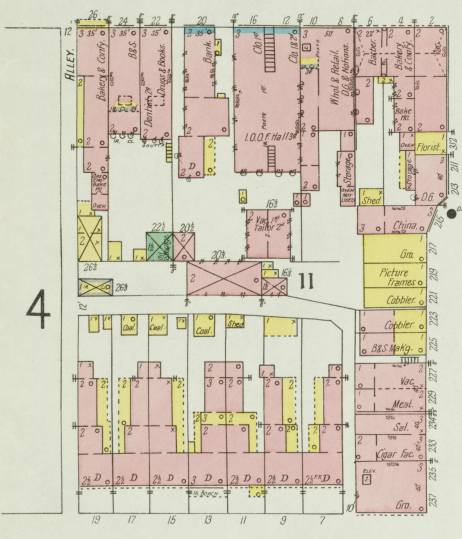
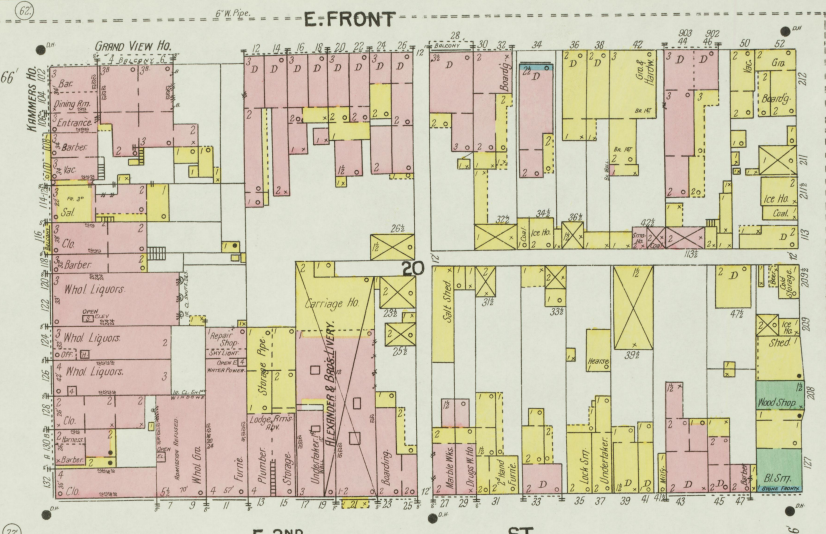
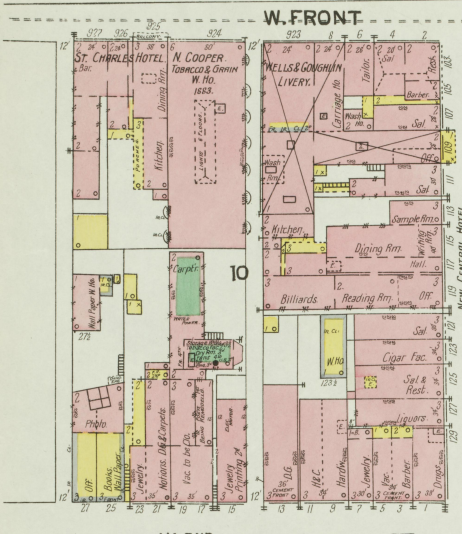
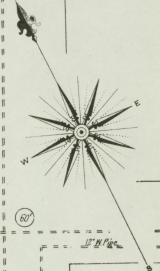
5

N O E X P O S U R E



C.E.D.R. on Iron Tracks

SER 1901
MAYSVILLE
KY.



6

4

8

18

MARKET

LIMESTONE

W. FRONT

E. FRONT

W. 2ND ST.

E. 2ND ST.

W. 3RD ST.

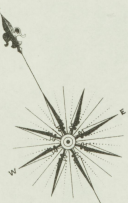
E. 3RD ST.

W. 4TH ST.

E. 4TH ST.

ESTATE OF WM. WORMALDS
COAL AND SALT ELEVATORS

BALL, MITCHELL AND CO. MACH SHOP AND FLOW MKS.



LOW MARSH GROUND

E. 2ND ST.

5

LIMESTONE

LEE

28

LINSBY

BRIDGE

E. 3RD ST.

7

23

27

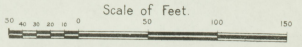
MAGNOLIA MILLS.
P. A. CHAPPEL

PLUM

JANUARY ST.

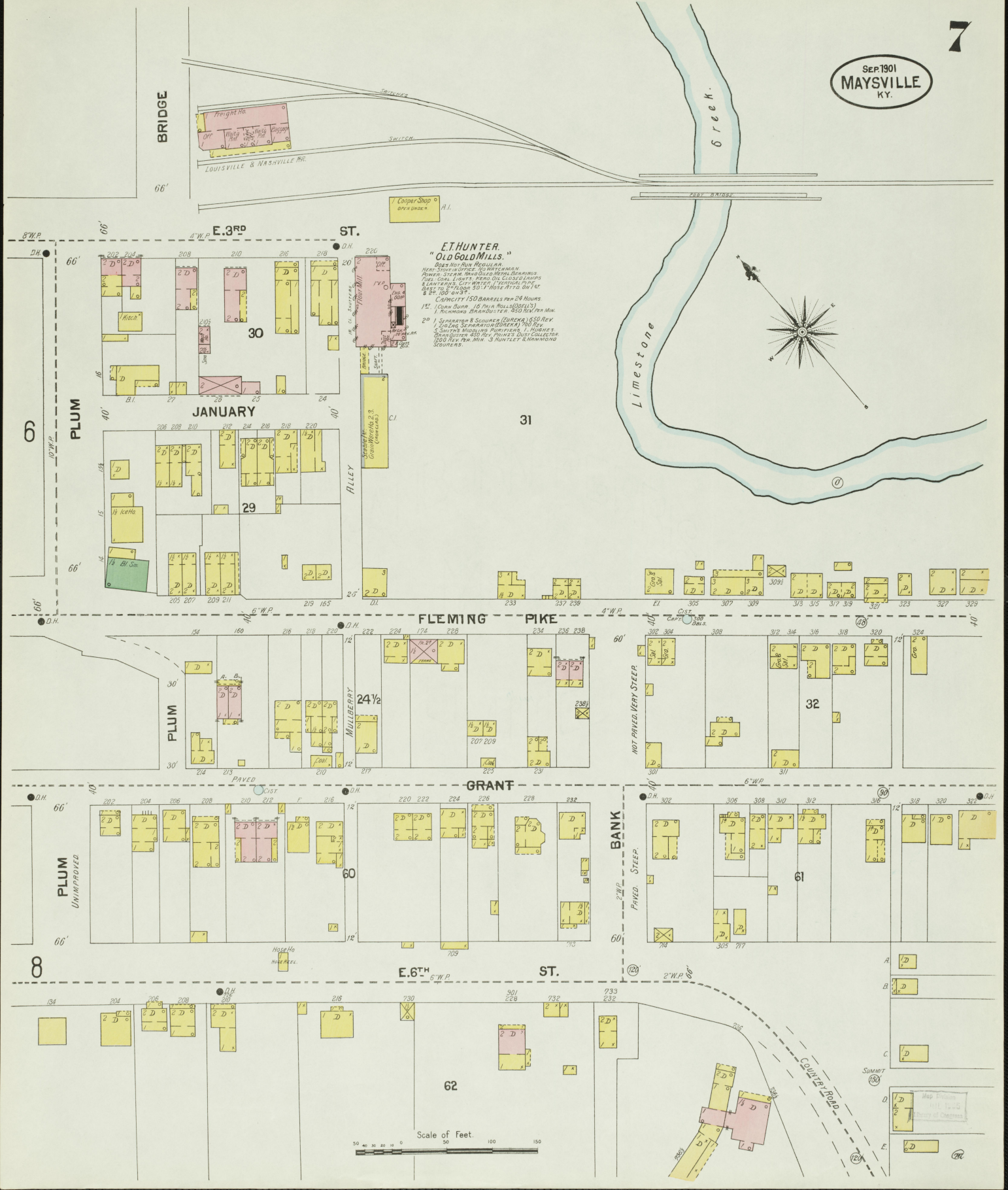
E. 4TH ST.

8

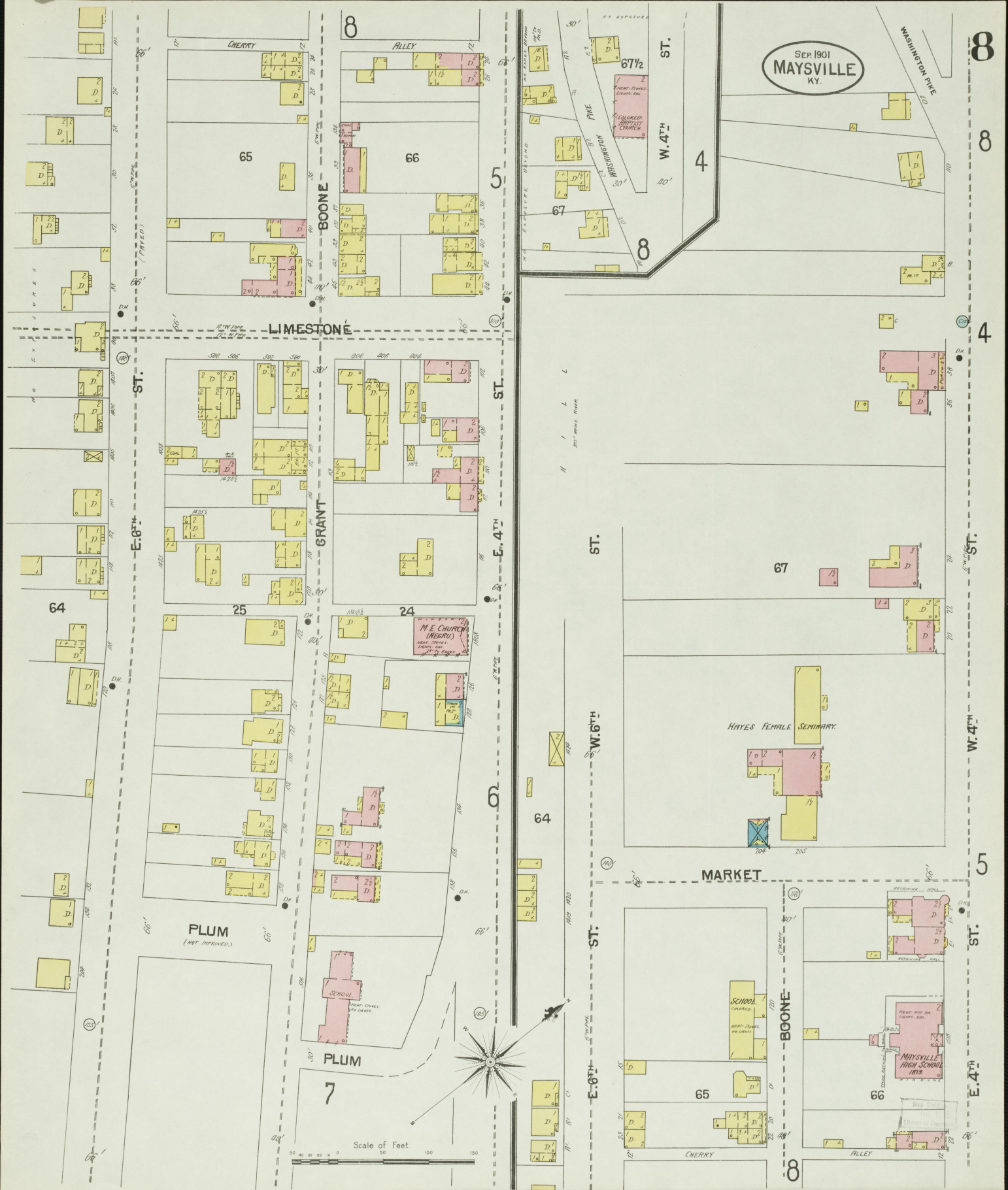


Map drawn
1901
E. H. GIBSON





SEP. 1901
MAYSVILLE
KY.



E-8TH ST.

E-8TH ST.

E-4TH ST.

E-4TH ST.

ST.

W-6TH ST.

E-6TH ST.

ST.

W-4TH ST.

ST.

E-4TH ST.

LIMESTONE

GRANT

MARKET

BOONE

PLUM
(NOT IMPROVED)

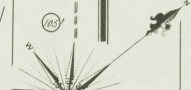
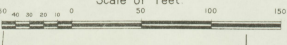
SCHOOL

SCHOOL

MAYSVILLE
HIGH SCHOOL
1879

HAYES FEMALE SEMINARY

Scale of Feet



CHERRY

ALLEY

PINE

WASHINGTON

WASHINGTON PIKE

65

66

67 1/2

67

64

25

24

64

67

7

65

66

8

8

8

4

8

8

4

5

8

SEP 1901
MAYSVILLE
KY.

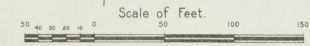
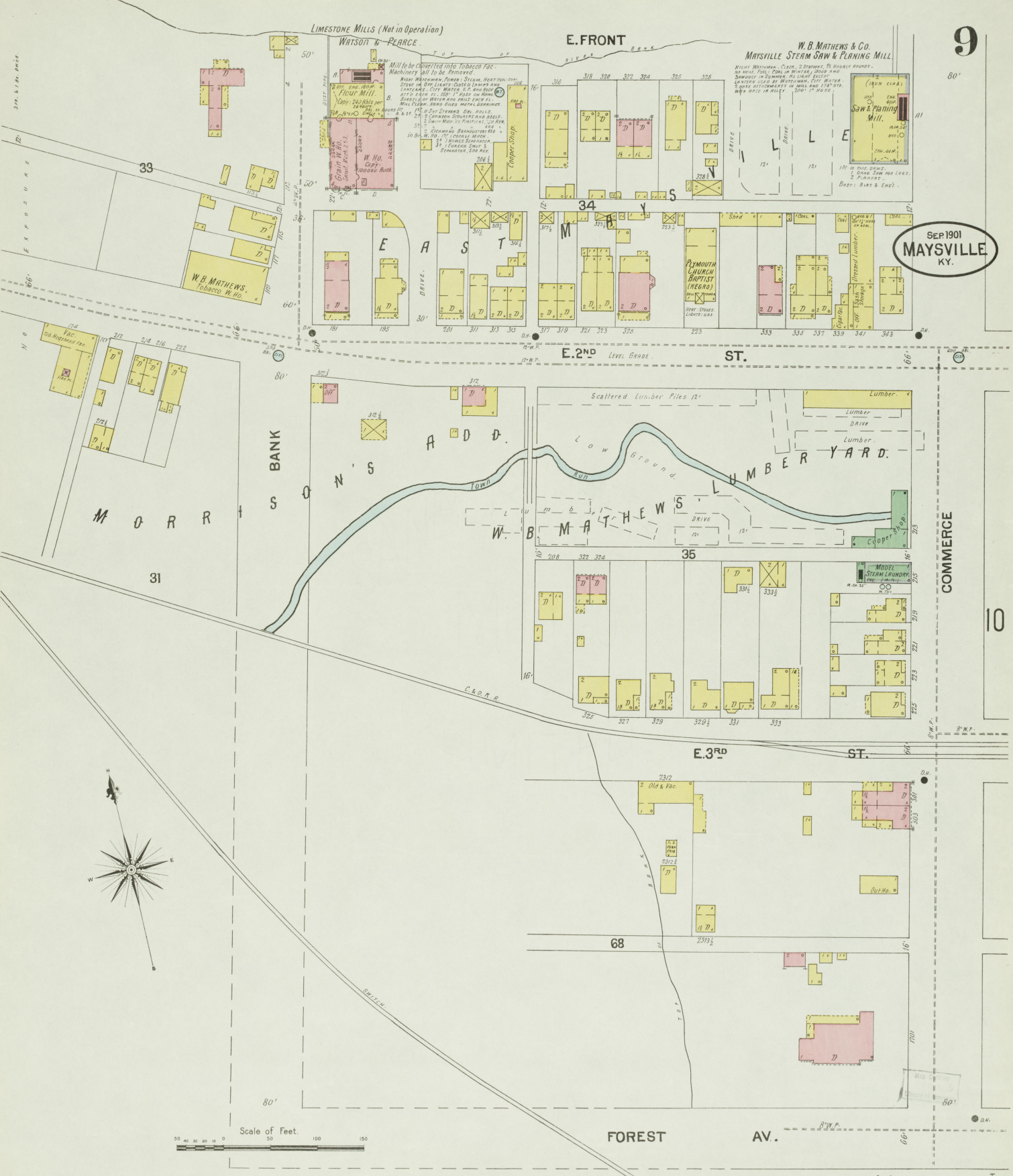
LIMESTONE MILLS (Not in Operation)

WATSON & PEARCE

E. FRONT

W. B. MATHEWS & CO.
MAYSVILLE STEAM SAW & PLANING MILL

W. B. MATHEWS, Clerk, is Licensed To Regularly employ
any other full time or part time labor and
contractor in MAYSVILLE, KY. under the
control and supervision of W. B. MATHEWS, City Mayor.
No other person or persons shall be employed in any
way in MAYSVILLE, KY. under the control and supervision
of W. B. MATHEWS, City Mayor.

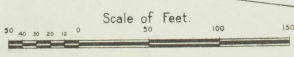
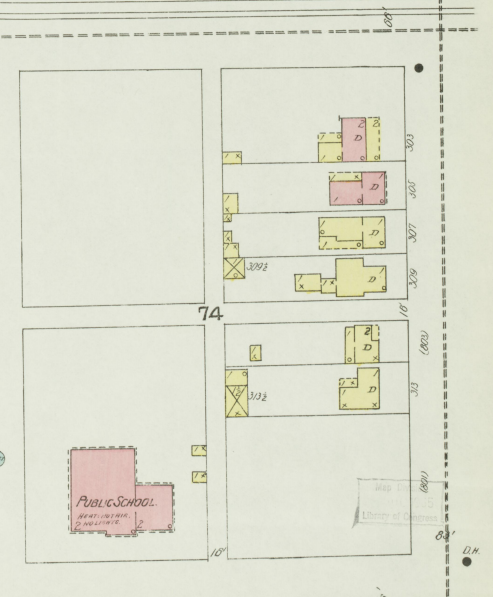
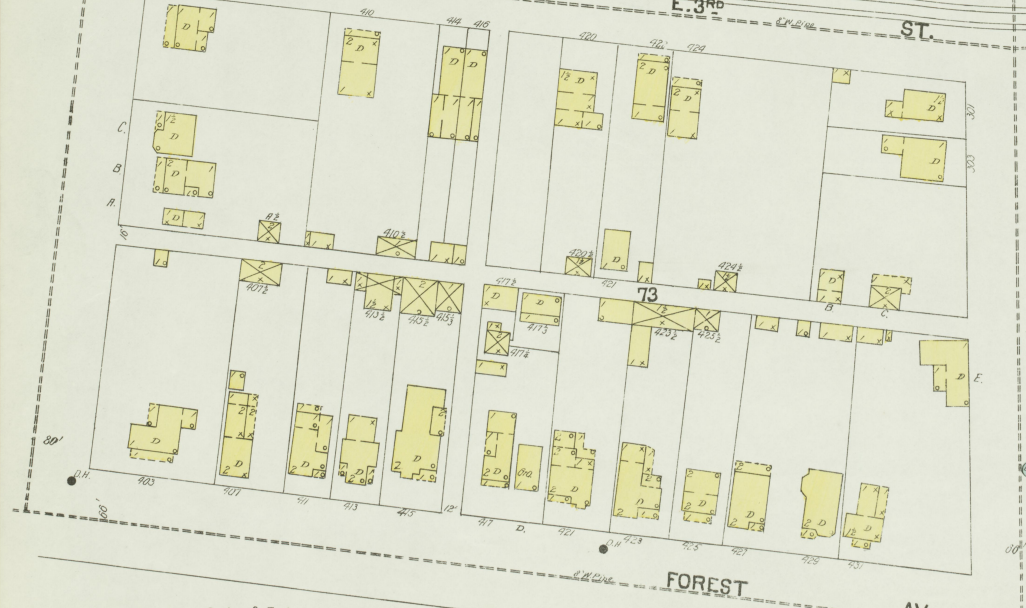
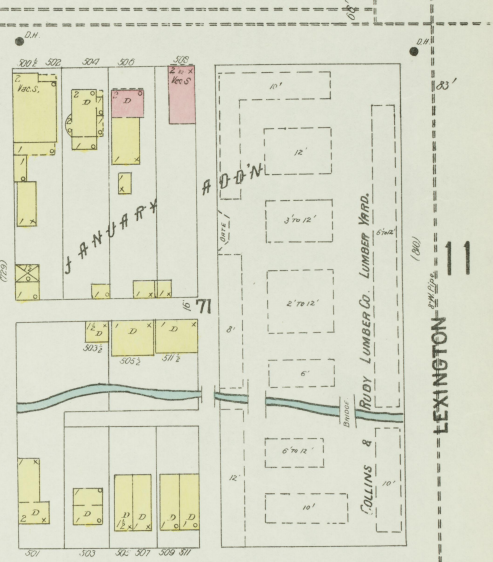
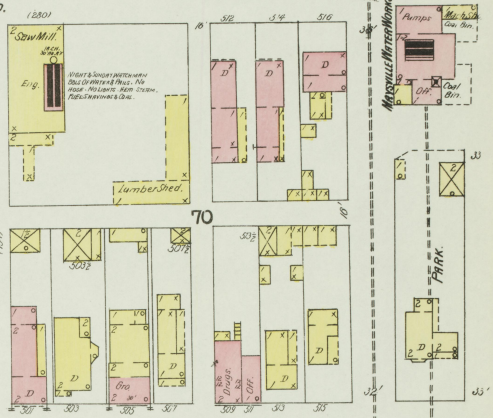
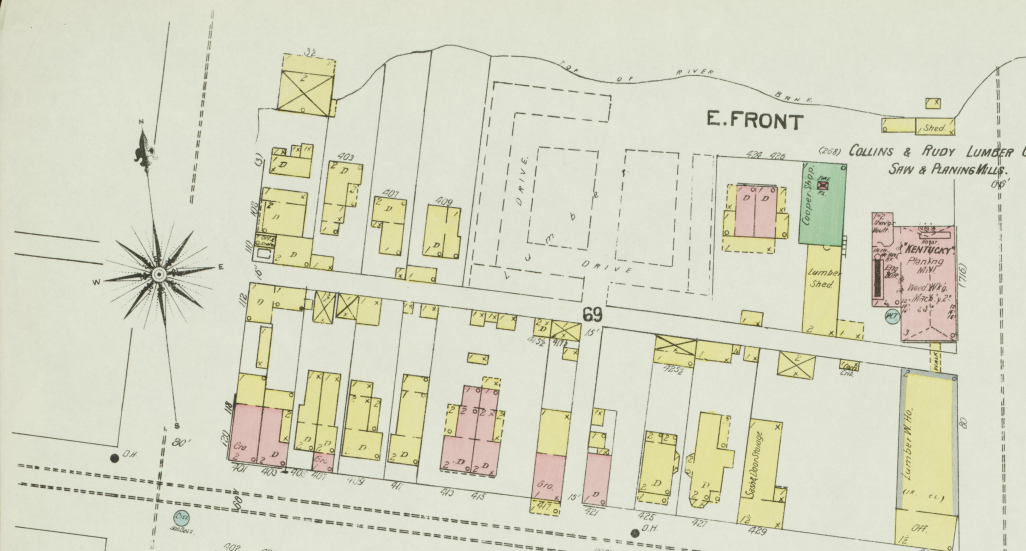


FOREST

AV.

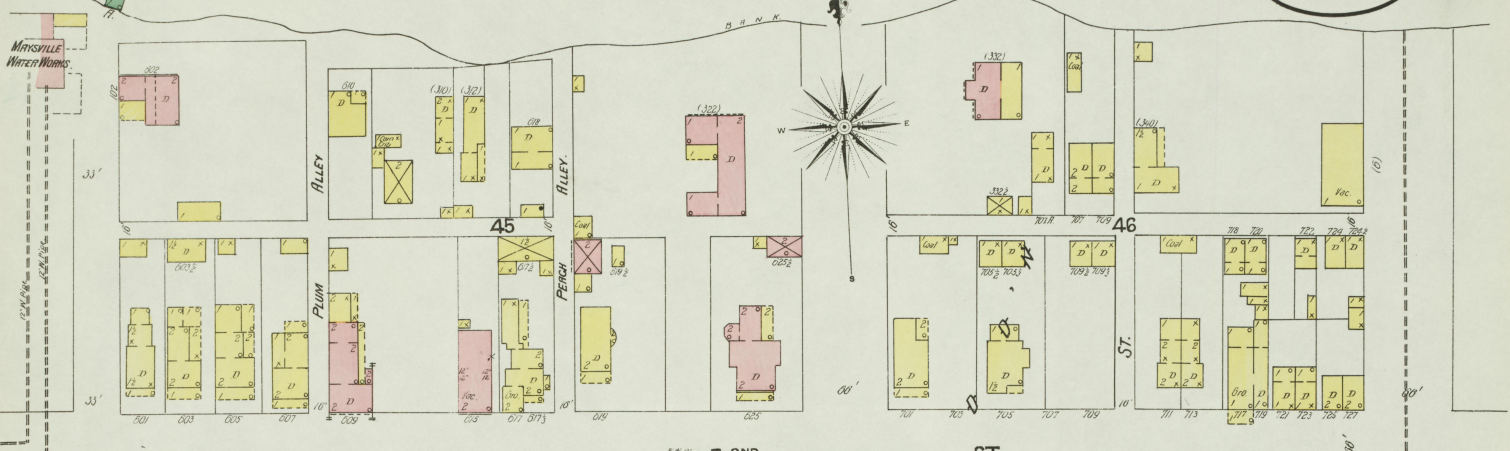
SEP 1901
MAYSVILLE
KY.

10



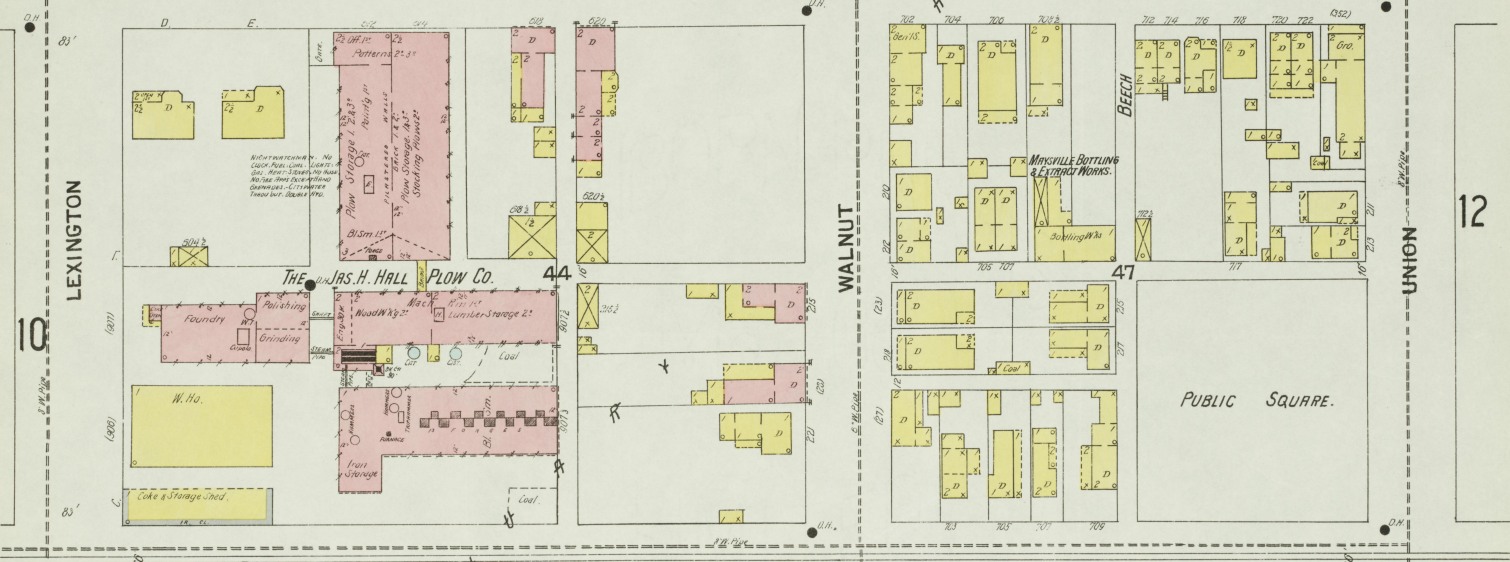
14

E. FRONT



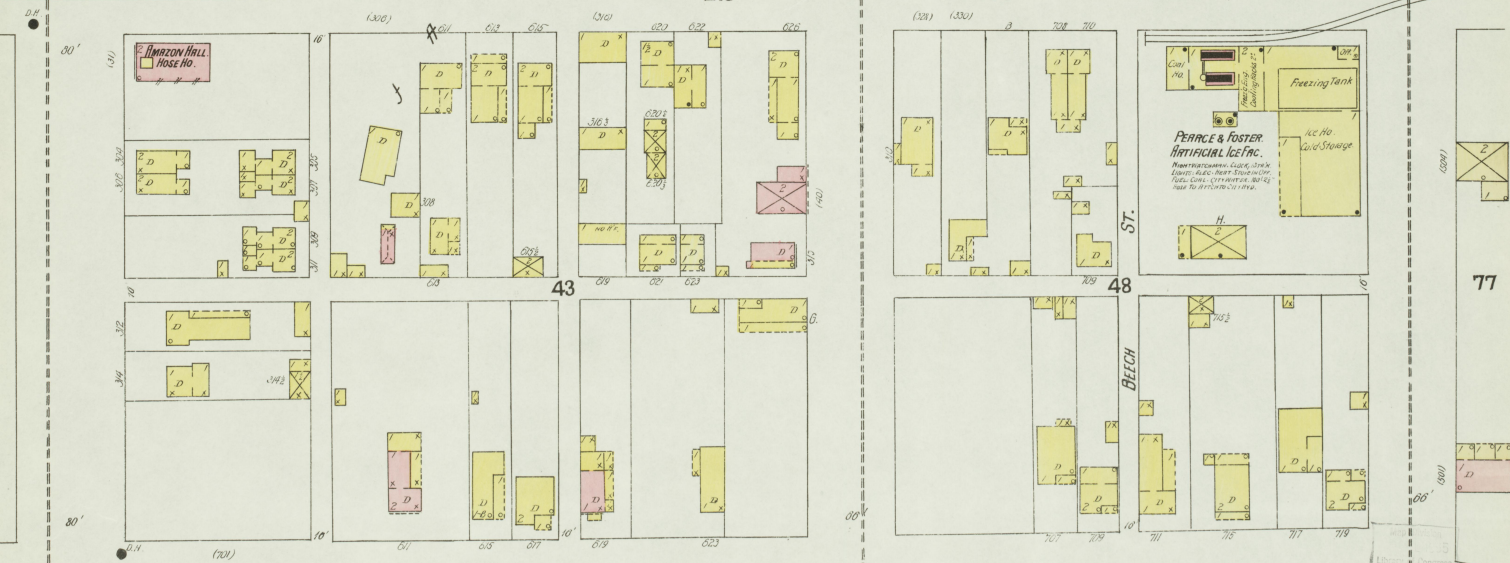
E. 2ND

ST.



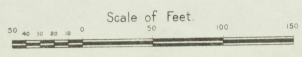
E. 3RD

ST.

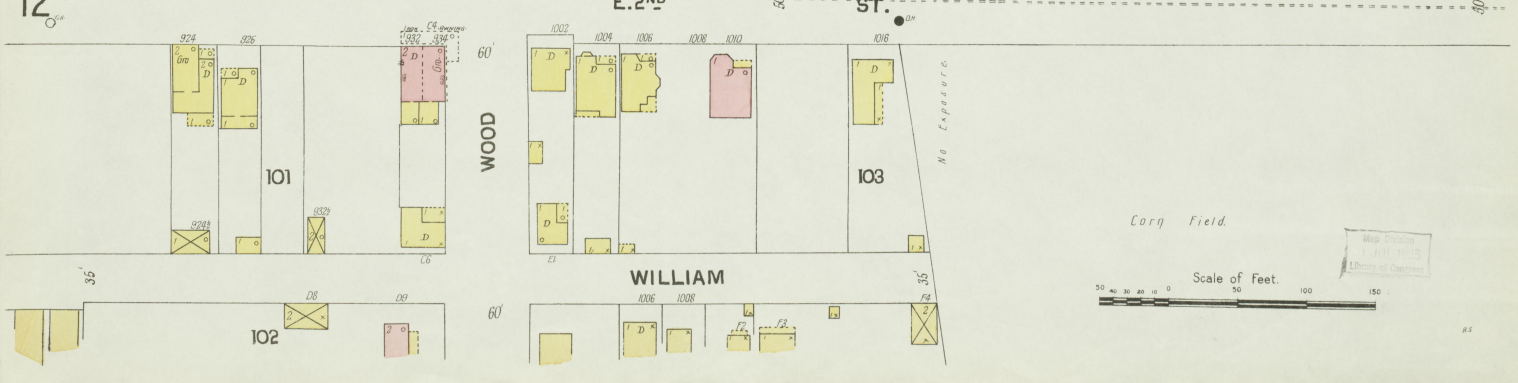
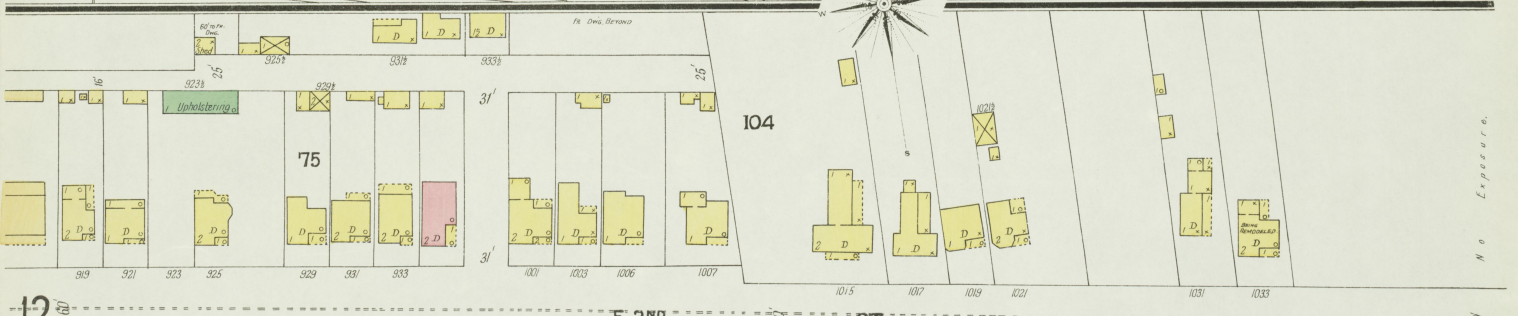
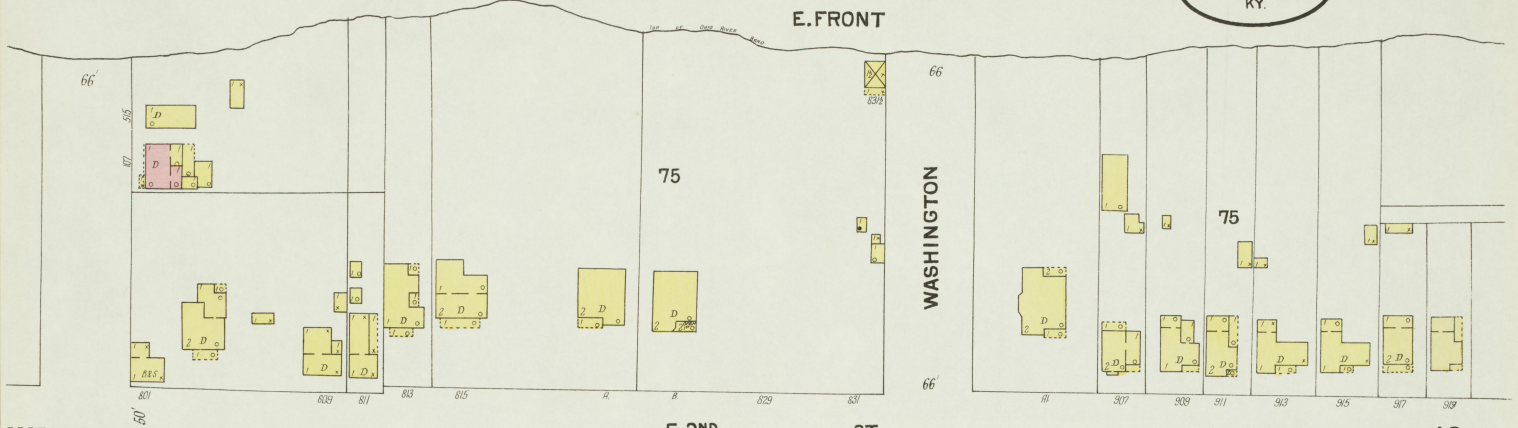


FOREST

AV.



IRACKN FIELDS BEYOND.



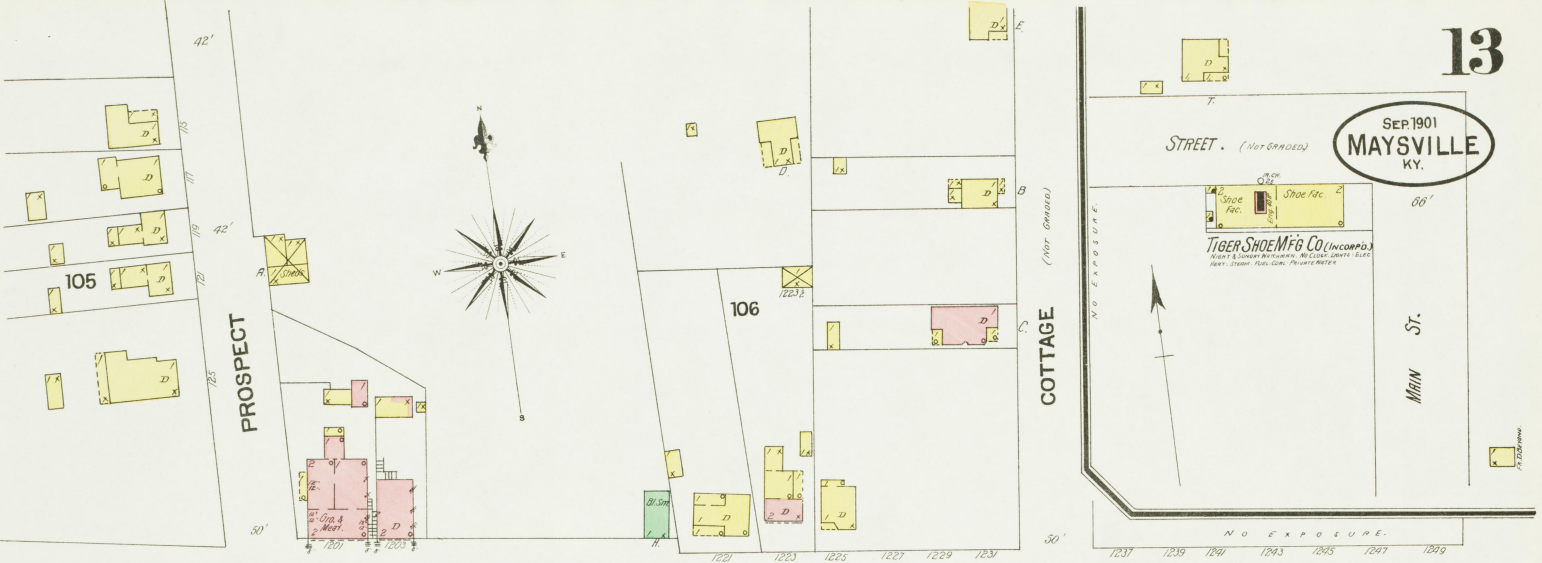
SEP 1901
MAYSVILLE
KY.

STREET. (Not Graded)

TIGER SHOE MFG CO (INCORPORATED)
MAKES & EXPORTS HIGH GRADE SHOES
REPAIRS SHOES. FURS. COATS. FURNITURE REPAIRS

COTTAGE

MINN ST.



E. 2ND ST.

Base Ball Grounds.

Scattered Piles of Lumber.

CHESTER

OHIO VALLEY PULLEY WORKS (INCORPORATED)
MFG'S Split Wooden Pulleys.

Lumber Shed.

Pulley Mfg 1902

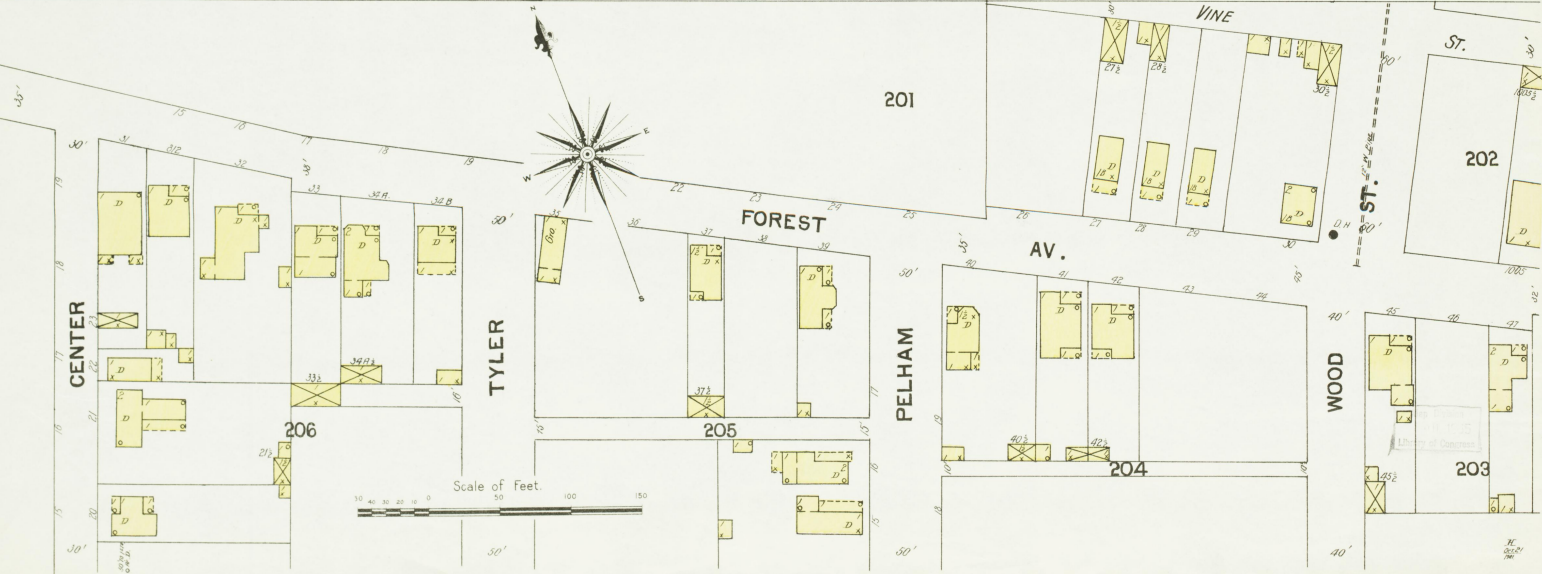
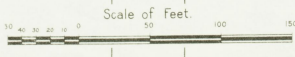
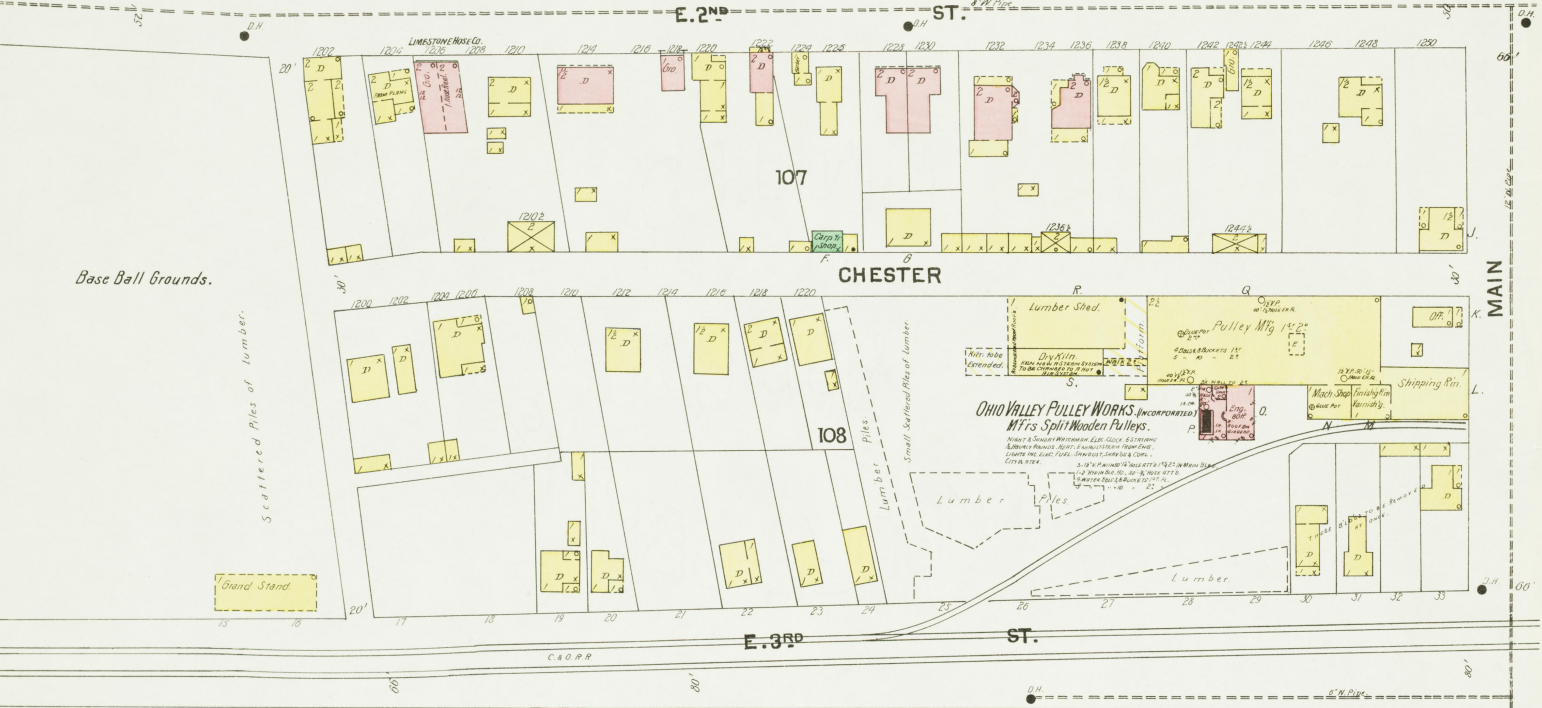
Shipping Pier.

Lumber Piles

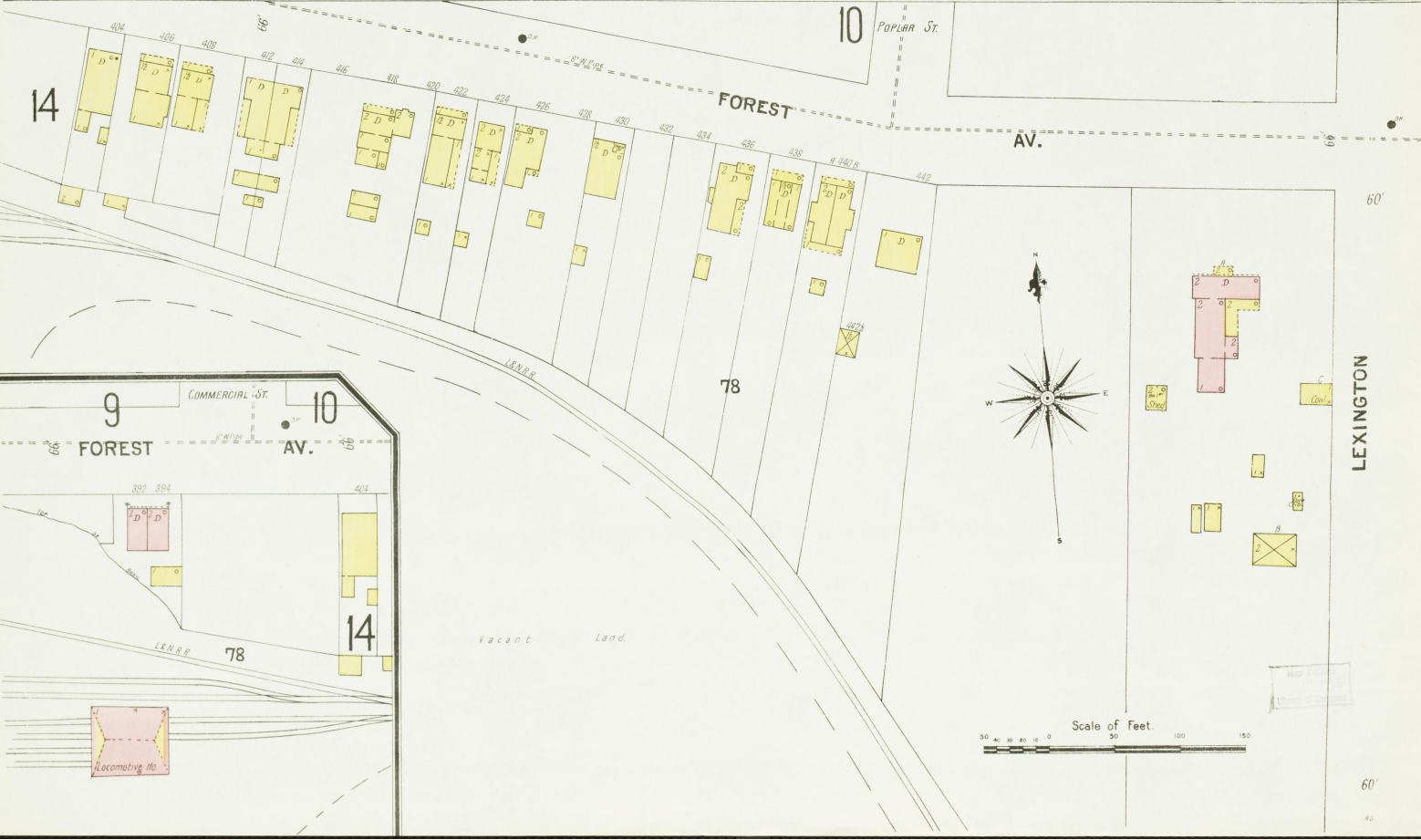
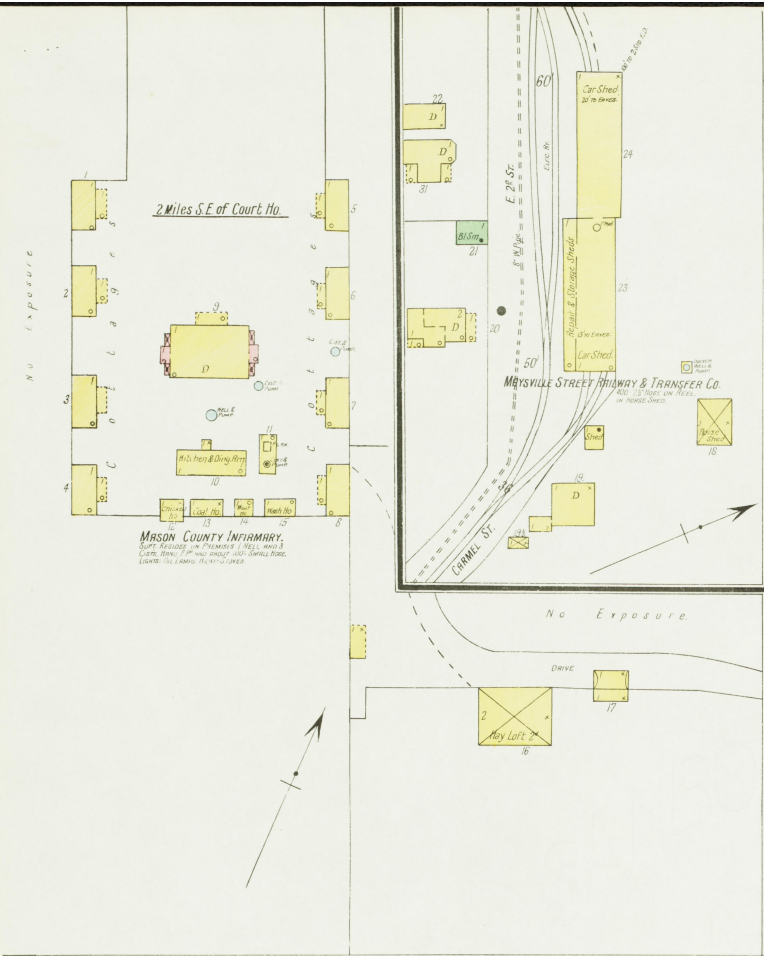
Lumber

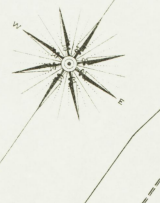
Lumber

E. 3RD ST.



SEP. 1901
MAYSVILLE
KY.





- A. BARN STYL.
- B. BARN
- C. RUMBLE TUB
- D. SHED
- E. SHED
- F. SHED
- G. SHED
- H. SHED
- I. SHED
- J. SHED
- K. SHED
- L. SHED
- M. SHED
- N. SHED
- O. SHED
- P. SHED
- Q. SHED
- R. SHED
- S. SHED
- T. SHED
- U. SHED
- V. SHED
- W. SHED
- X. SHED
- Y. SHED
- Z. SHED

THE H. E. POGUE DISTILLERY CO.
 Reg. Distillery No. 7 Dist.
 Mash 400 Bushels per Day
 Yield 1200 Gal's.

1 1/2 Miles N.W. of Court Ho.

NO EXPOSURE

J. H. ROGERS
 Reg. Distillery No. 99 Dist. Mason Co. Ky.
 Yield 1000 Gal's per Day

1 Mile N.W. of Court Ho.

NO EXPOSURE

GRAIN W. HO.

NO EXPOSURE

CITIZENS GAS CO.
 Gas Holder

NO EXPOSURE

MAYSVILLE MFG CO.
 PLANING MILL

NO EXPOSURE

H. E. POGUE
 Reg. W. Ho.
 Cap. 1200 Bush.

RYNITZ BROS.
 Reg. Distillery No. 2 Dist. Mason Co. Ky.
 (NOT IN OPERATION SINCE JUNE, 1898)

Mash 250 Bu. Per Day
 Yield 1000 Gal's

1 1/2 Miles N.W. of Court Ho.

NO EXPOSURE

ZWEIGART'S
 SLAUGHTER HO. & SAUSAGE FAC.

NO EXPOSURE

FUEL GAS PLANT.
 NOT IN USE.

Gasometer

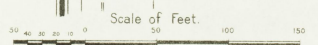
NO EXPOSURE

STANDARD OIL CO.

NO EXPOSURE

BLUE RUN PIKE

NO EXPOSURE



H I L L S I D E

E X P O S U R E

N O