



(185)
3 SHEETS
1

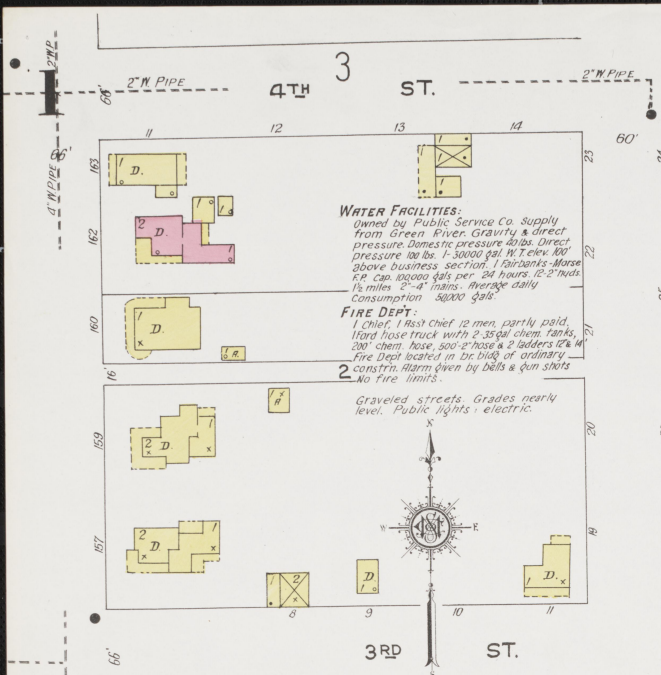
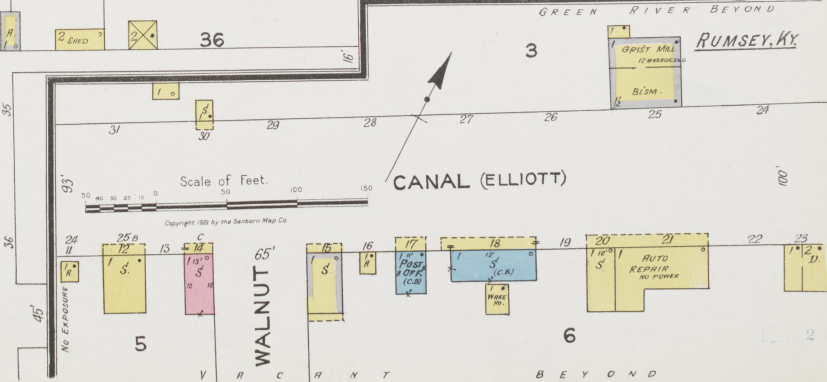
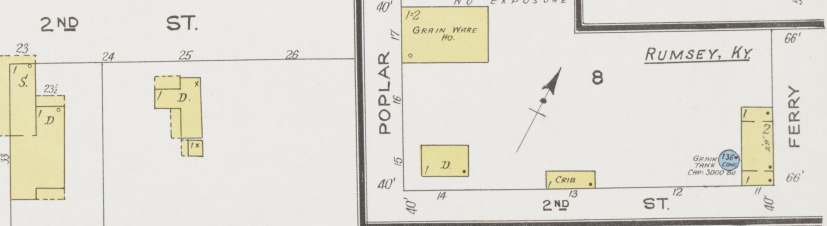
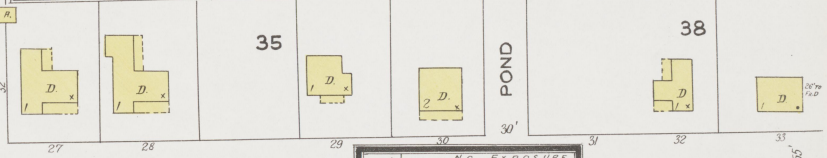
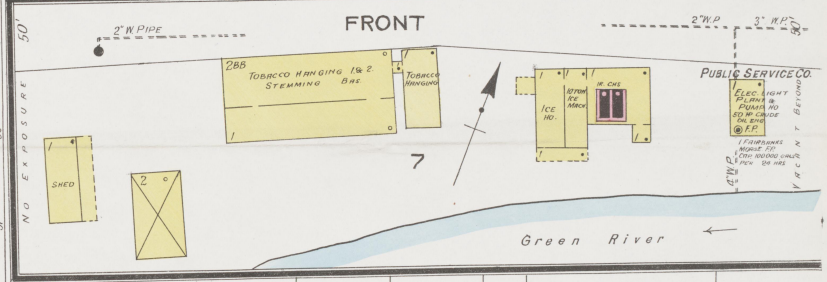
INCLUDING RUMSEY
42665
DCT-B 1327

INDEX

SPECIALS	NUMBER	NAME	NUMBER
C	1	Calhoun High School	2
C	2	Kill & Lam. Co., Saw Mill, etc.	2
C	3	Church of Christ	2
C	4	County Court House and Jail	2
D	1	Dark Tobacco Grower's Association, Tobacco Warehouse	1
F	1	Fire Department	2
F	2	First Methodist Episcopal Church	2
J	1	Johnson House	2
M	1	Missionary Baptist Church	2
P	1	Post Office	2
P	2	Presby. Church	2
P	3	Public School	2
P	4	Serrano Co., Elec. Light Plant and Pump House	1
R	1	Roman Catholic Church	2

3/8 of a mile S.E. of Court Ho.

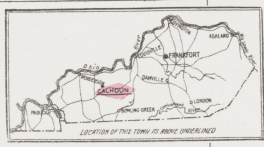
GREEN RIVER BEYOND



WATER FACILITIES:
Owned by Public Service Co. Supply from Green River. Gravity & direct pressure. Domestic pressure 40 lbs. Direct pressure 100 lbs. 1-30000 gal. 14\"/>

FIRE DEPT.:
1 Chief, 1 Asst. Chief, 12 men, partly paid. 11000 hose truck with 2-35 gal. chem. tanks, 200' chem. hose, 500' 2\"/>

Graveled streets. Grades nearly level. Public lights, electric.



KEY

- ROOF: SHED, GABLE, FLAT, etc.
- WALLS: BRICK, CONCRETE, etc.
- WINDOWS: SHUTTERS, etc.
- DOORS: etc.
- STAIRS: etc.
- CHIMNEYS: etc.
- POLES: etc.
- SPRINKLERS: etc.
- FIRE STATION: AS SHOWN ON KEY MAP
- ACTUAL STREET DIMENSIONS ARE ACTUAL
- CONSECUTIVE STREET NOS ARE ARBITRARY

