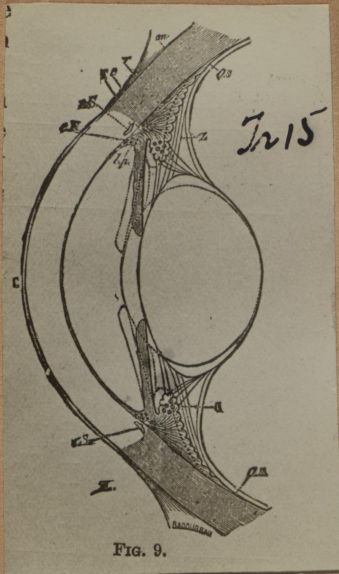
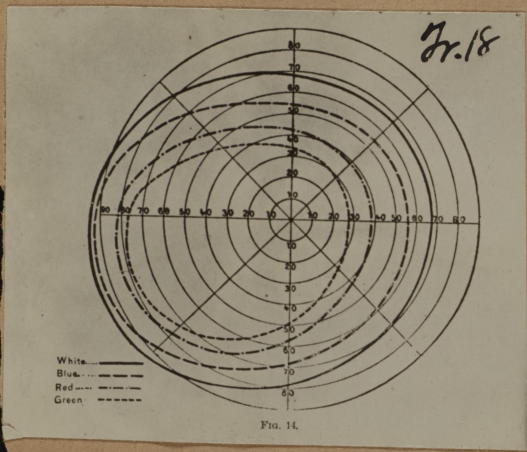


1779 1578



#554

1579 1780



#555

1781

**PREVALENCE OF TRACHOMA AMONG RURAL SCHOOL CHILDREN, JEFFERSON Co. Ky.**

A table showing total number of pupils enrolled, pupils present, pupils examined, and trachoma cases discovered in the rural schools of Jefferson County, Ky.

Rural county	Number of Schools	Pupils enrolled	Pupils present	Pupils examined	Pupils suffering from trachoma	Trachoma Cases	Sequelae Cases
Jefferson	106	6,351	4,771	4,159	315	120	8

U.S. PUBLIC HEALTH SERVICE

#556

PA 01 M 158  
page 27