

# GEORGETOWN

SCOTT COUNTY  
KENTUCKY

*Sanborn Map Company*  
NEW YORK

Dec. 1925

Copyright 1926 by the Sanborn Map Co.

Population, 5000  
Prevailing Winds S.W.

### WATER FACILITIES

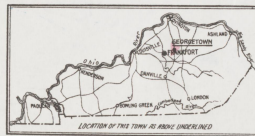
Water works owned by private company. Water supply from an inexhaustible spring located at water plant. Water pumped from spring into filtration basin and then into mains. Pumps, as follows: One Westinghouse centrifugal pump, capy 500 galls. per min. One Fairbanks-Morse centrifugal pump, capy 400 galls. per min. One general Electric centrifugal pump, capy 1000 galls. per min. Two Cameron centrifugal pumps capy 700 galls. each per min. 10 miles of water pipes, 4" to 8" diam. of hydrants. Domestic pressure 60 lbs. Fire pressure, 70 lbs. Average daily consumption 600,000 galls.

### FIRE DEPARTMENT

Organized volunteer company. Partly paid. One chief, one assistant chief and six men paid per fire. One fire station. One Ahrens-Tax combination auto truck with 120 gal. pump, 1000 ft. 2 1/2" hose and hook & ladder equipment. 700 ft. 2" hose in reserve. Gamewell fire alarm system, 10 boxes. Headquarters located in fire station, a brick building. Fire alarm, also by telephone. No fire limits.

**KEY**

- - - - - RAILROAD  
 - - - - - HIGHWAY  
 - - - - - CANAL  
 - - - - - CREEK  
 - - - - - STREAM  
 - - - - - DRAINAGE  
 - - - - - FENCE  
 - - - - - GROUND  
 - - - - - CONCRETE  
 - - - - - BRICK  
 - - - - - STONE  
 - - - - - ASPHALT  
 - - - - - GRAVEL  
 - - - - - SAND  
 - - - - - CLAY  
 - - - - - SILT  
 - - - - - MUD  
 - - - - - WATER  
 - - - - - ICE  
 - - - - - SNOW  
 - - - - - FOG  
 - - - - - MIST  
 - - - - - CLOUDS  
 - - - - - SUN  
 - - - - - MOON  
 - - - - - STARS  
 - - - - - PLANETS  
 - - - - - METEORS  
 - - - - - COMETS  
 - - - - - NEBULAE  
 - - - - - GALAXIES  
 - - - - - UNIVERSE

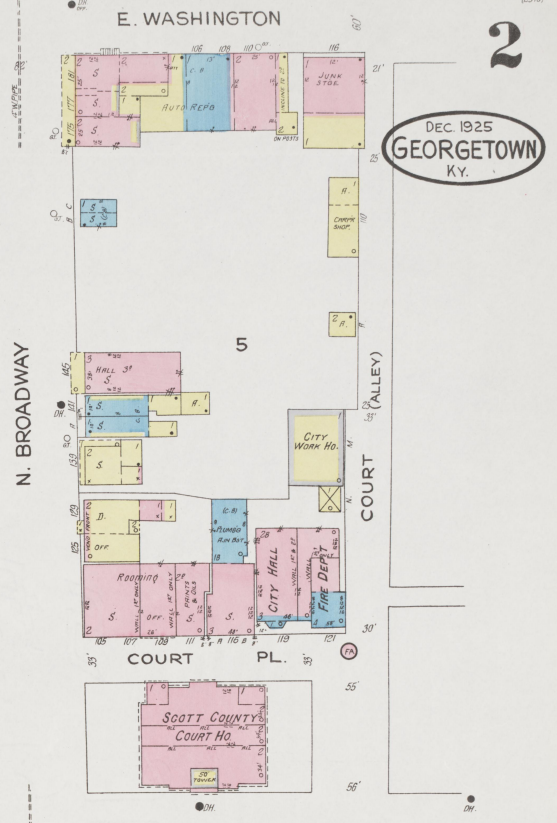


Scale 800 feet to one inch

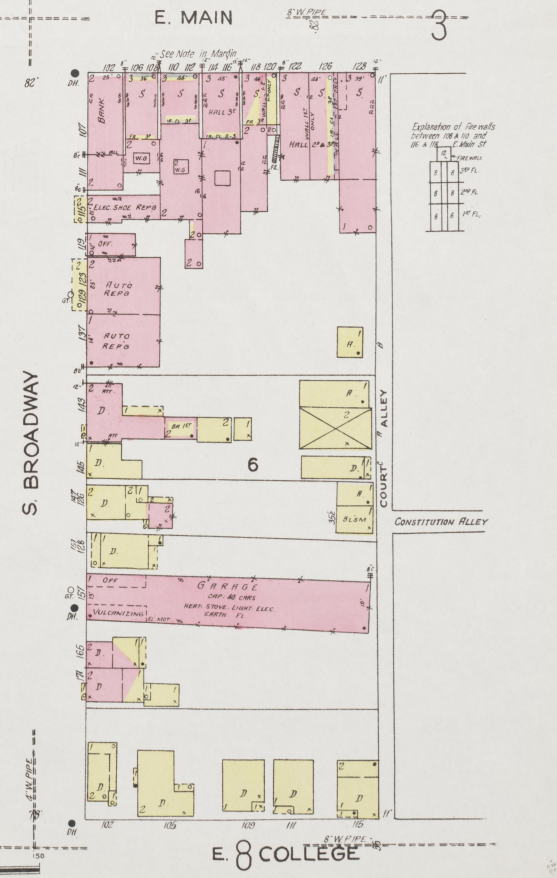
## INDEX

STREETS	INDEX	INDEX	INDEX	INDEX	
Argus Place (arbitrary)	3 & 17	Constitution Alley	3	Main, E.	(200-232)
Avondale	100-131 15	Court, A	2, 3 & 17	Washington, E.	100-116 *2
Balmoral (arbitrary)	4 & 5	Davis, Dudley Ave.	100-355 14	Water, N.	100-130 *19
Beaupel Place (arbitrary)	15	Farnham Ave.	8 & 13	West	100-115 18
Bourbon	100-141 4	First Ave, see Quinn	100-115 13	W.	200-605 19
Bradley Alley	100-185 2	Fountain Ave.	300-419 15	Maple (Cont.)	100-112 19
Broadway, N.	200-355 17	Gano Ave.	100-409 15	Military, S.	100-224 *10
Chambers Ave.	100-185 2	Grealey	100-115 19	Montgomery Ave.	100-137 3
Chestnut	100-145 5	Hamilton, N.	100-137 3	Morgan	200-908 *4
Clayton, E. see E. Clayton Ave	200-210 8	Hickman, Highland Ave.	100-137 3	Mulberry, N.	100-134 *4
Clinton, E.	100-135 13	Jackson, E.	1-114 8	Oak	101-135 *3
College, E.	100-135 13	Jefferson, E.	100-135 17	Oregon, E.	100-125 3
Conley Ave.	100-123 13	Kalara (arbitrary)	2	Paris Pike	200-247 18
Constitution, E.	300-315 9	Kelly Ave.	19	Payne	300-410 *10
		Kentucky Ave.	2	Penn, E.	17 & 19
		Keota (arbitrary)	2	Poplar	200-239 4
		Leust, Lynn	100-119 18	Quinn	240-255 5
		Maddox, S.	100-240 *11	Royal Springs Ave.	7 & 19
		Main, E.	132-245 9	Rucker Ave.	100-120 *7
				Second	1-111 *13
				Spring, see Royal Springs Ave.	2-112 *14
				Walnut	100-121 *16
				Warendale Ave.	19
				Washington, E.	100-116 *2
				Water, N.	100-130 *19
				West	100-115 18
				W.	200-605 19
				Maple (Cont.)	100-112 19
				Military, S.	100-224 *10
				Montgomery Ave.	100-137 3
				Morgan	200-908 *4
				Mulberry, N.	100-134 *4
				Oak	101-135 *3
				Oregon, E.	100-125 3
				Paris Pike	200-247 18
				Payne	300-410 *10
				Penn, E.	17 & 19
				Poplar	200-239 4
				Quinn	240-255 5
				Royal Springs Ave.	7 & 19
				Rucker Ave.	100-120 *7
				Second	1-111 *13
				Spring, see Royal Springs Ave.	2-112 *14
				Walnut	100-121 *16
				Warendale Ave.	19
				Washington, E.	100-116 *2
				Water, N.	100-130 *19
				West	100-115 18
				W.	200-605 19
				Maple (Cont.)	100-112 19
				Military, S.	100-224 *10
				Montgomery Ave.	100-137 3
				Morgan	200-908 *4
				Mulberry, N.	100-134 *4
				Oak	101-135 *3
				Oregon, E.	100-125 3
				Paris Pike	200-247 18
				Payne	300-410 *10
				Penn, E.	17 & 19
				Poplar	200-239 4
				Quinn	240-255 5
				Royal Springs Ave.	7 & 19
				Rucker Ave.	100-120 *7
				Second	1-111 *13
				Spring, see Royal Springs Ave.	2-112 *14
				Walnut	100-121 *16
				Warendale Ave.	19
				Washington, E.	100-116 *2
				Water, N.	100-130 *19
				West	100-115 18
				W.	200-605 19
				Maple (Cont.)	100-112 19
				Military, S.	100-224 *10
				Montgomery Ave.	100-137 3
				Morgan	200-908 *4
				Mulberry, N.	100-134 *4
				Oak	101-135 *3
				Oregon, E.	100-125 3
				Paris Pike	200-247 18
				Payne	300-410 *10
				Penn, E.	17 & 19
				Poplar	200-239 4
				Quinn	240-255 5
				Royal Springs Ave.	7 & 19
				Rucker Ave.	100-120 *7
				Second	1-111 *13
				Spring, see Royal Springs Ave.	2-112 *14
				Walnut	100-121 *16
				Warendale Ave.	19
				Washington, E.	100-116 *2
				Water, N.	100-130 *19
				West	100-115 18
				W.	200-605 19
				Maple (Cont.)	100-112 19
				Military, S.	100-224 *10
				Montgomery Ave.	100-137 3
				Morgan	200-908 *4
				Mulberry, N.	100-134 *4
				Oak	101-135 *3
				Oregon, E.	100-125 3
				Paris Pike	200-247 18
				Payne	300-410 *10
				Penn, E.	17 & 19
				Poplar	200-239 4
				Quinn	240-255 5
				Royal Springs Ave.	7 & 19
				Rucker Ave.	100-120 *7
				Second	1-111 *13
				Spring, see Royal Springs Ave.	2-112 *14
				Walnut	100-121 *16
				Warendale Ave.	19
				Washington, E.	100-116 *2
				Water, N.	100-130 *19
				West	100-115 18
				W.	200-605 19
				Maple (Cont.)	100-112 19
				Military, S.	100-224 *10
				Montgomery Ave.	100-137 3
				Morgan	200-908 *4
				Mulberry, N.	100-134 *4
				Oak	101-135 *3
				Oregon, E.	100-125 3
				Paris Pike	200-247 18
				Payne	300-410 *10
				Penn, E.	17 & 19
				Poplar	200-239 4
				Quinn	240-255 5
				Royal Springs Ave.	7 & 19
				Rucker Ave.	100-120 *7
				Second	1-111 *13
				Spring, see Royal Springs Ave.	2-112 *14
				Walnut	100-121 *16
				Warendale Ave.	19
				Washington, E.	100-116 *2
				Water, N.	100-130 *19
				West	100-115 18
				W.	200-605 19
				Maple (Cont.)	100-112 19
				Military, S.	100-224 *10
				Montgomery Ave.	100-137 3
				Morgan	200-908 *4
				Mulberry, N.	100-134 *4
				Oak	101-135 *3
				Oregon, E.	100-125 3
				Paris Pike	200-247 18
				Payne	300-410 *10
				Penn, E.	17 & 19
				Poplar	200-239 4
				Quinn	240-255 5
				Royal Springs Ave.	7 & 19
				Rucker Ave.	100-120 *7
				Second	1-111 *13
				Spring, see Royal Springs Ave.	2-112 *14
				Walnut	100-121 *16
				Warendale Ave.	19
				Washington, E.	100-116 *2
				Water, N.	100-130 *19
				West	100-115 18
				W.	200-605 19
				Maple (Cont.)	100-112 19
				Military, S.	100-224 *10
				Montgomery Ave.	100-137 3
				Morgan	200-908 *4
				Mulberry, N.	100-134 *4
				Oak	101-135 *3
				Oregon, E.	100-125 3
				Paris Pike	200-247 18
				Payne	300-410 *10
				Penn, E.	17 & 19
				Poplar	200-239 4
				Quinn	240-255 5
				Royal Springs Ave.	7 & 19
				Rucker Ave.	100-120 *7
				Second	1-111 *13
				Spring, see Royal Springs Ave.	2-112 *14
				Walnut	100-121 *16
				Warendale Ave.	19
				Washington, E.	100-116 *2
				Water, N.	100-130 *19
				West	100-115 18
				W.	200-605 19
				Maple (Cont.)	100-112 19
				Military, S.	100-224 *10
				Montgomery Ave.	100-137 3
				Morgan	200-908 *4
				Mulberry, N.	100-134 *4
				Oak	101-135 *3
				Oregon, E.	100-125 3
				Paris Pike	200-247 18
				Payne	300-410 *10
				Penn, E.	17 & 19
				Poplar	200-239 4
				Quinn	240-255 5
				Royal Springs Ave.	7 & 19
				Rucker Ave.	100-120 *7
				Second	1-111 *13
				Spring, see Royal Springs Ave.	2-112 *14
				Walnut	100-121 *16
				Warendale Ave.	19
				Washington, E.	100-116 *2
				Water, N.	100-130 *19
				West	100-115 18
				W.	200-605 19
				Maple (Cont.)	100-112 19
				Military, S.	100-224 *10
				Montgomery Ave.	100-137 3
				Morgan	200-908 *4

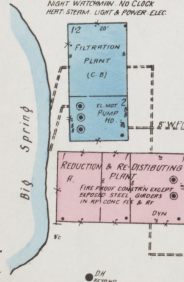




DEC. 1925  
**GEORGETOWN**  
 KY.



GEORGETOWN WATER, GAS,  
 ELEC. & POWER CO.  
 RIGHT WATERMAIN, NO. 1200  
 PORT STEAM, LIGHT & POWER ELEC.



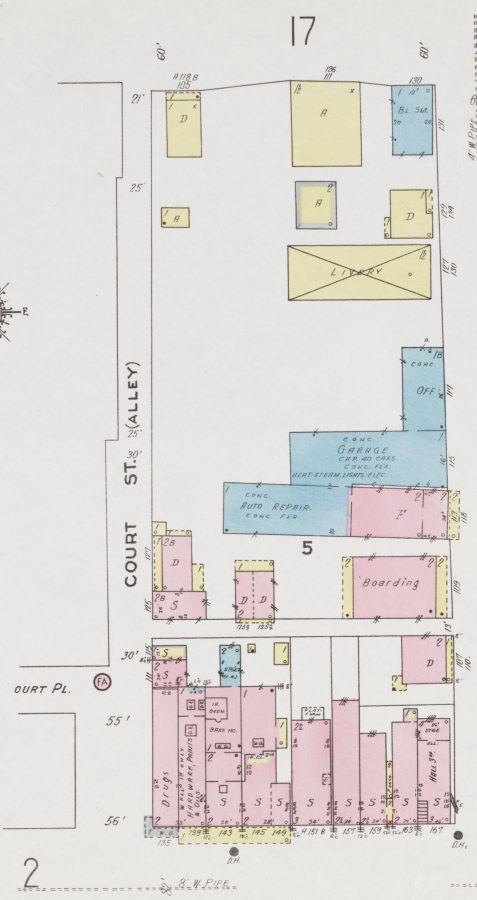
Explanation of Symbols  
 between 100 & 100' and  
 100' & 100' E. Main St.

Scale of Feet.

Copyright 1925 by the Sansborn Map Co.



3



2

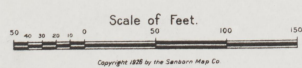


3

DEC. 1925  
GEORGETOWN  
KY.

4

9









BOURBON



PENN ALLEY (E. WASHINGTON)  
NOT OPENED

CHAMBERS AV.

CANTRELL ALLEY (E. WASHINGTON ST.)

E. MAIN

Scale of Feet.

Copyright 1925 by the Sandborn Map Co.

FARMER'S UNION COAL YARD.

BALMORAL

4

5

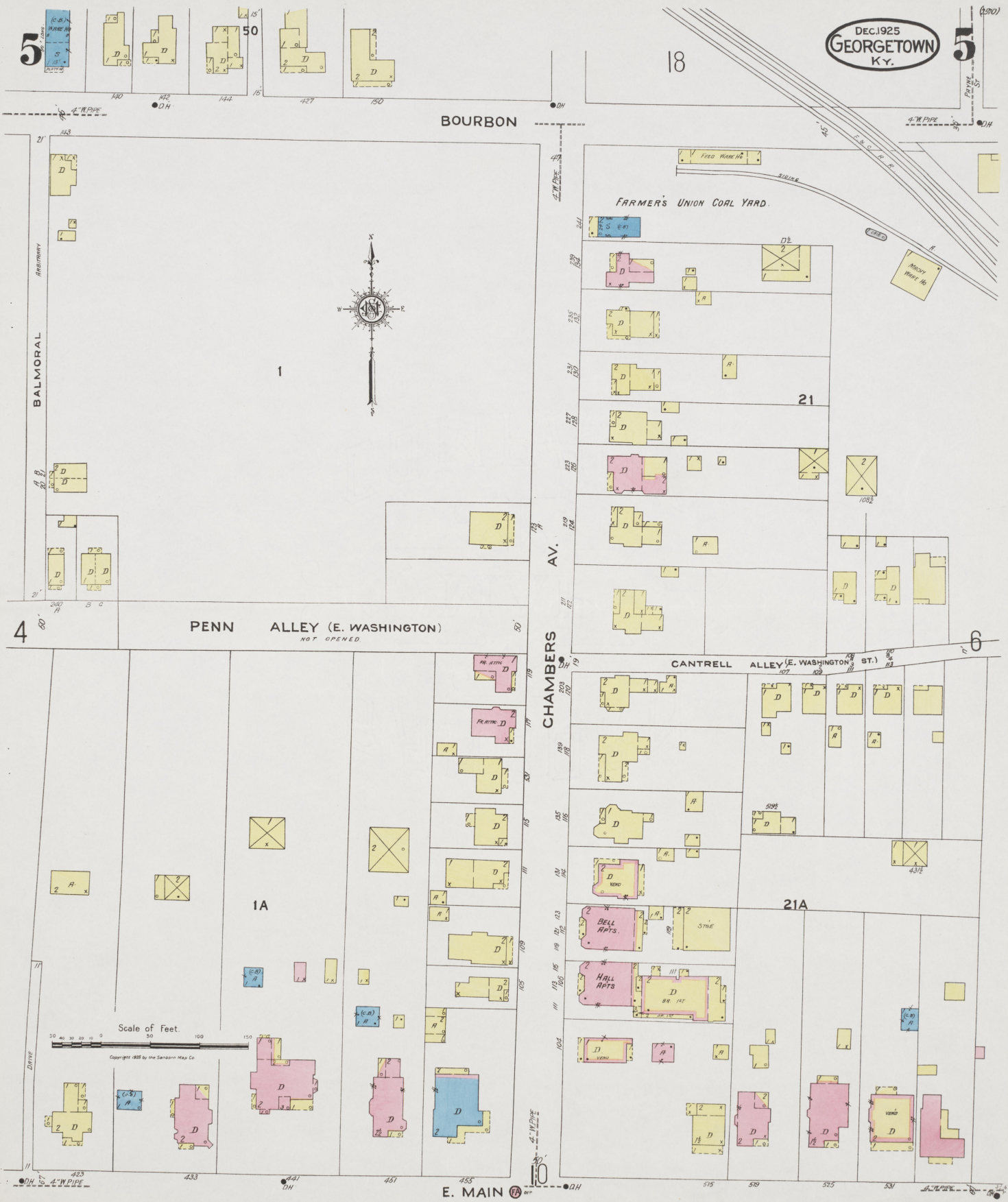
18

5

21

1A

21A







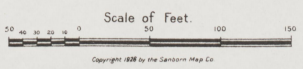


DEC. 1925  
GEORGETOWN  
KY.

W. COLLEGE

ROYAL SPRINGS ICE CO  
RUNS 2 MONTHS OF THE YEAR  
THE WINTER MONTHS AND WARE HOUSE  
ELEC. POWER SYSTEM FUEL OIL  
CARRY OF THE ICE MACHINERY  
SYSTEM.

EPISC. CHURCH  
HEAT. PLUMB. LIGHTS. ELEC.



Copyright 1926 by the Geoborn Map Co.

7

239

ROYAL SPRINGS AV.

S. WATER

W. CLINTON

2

7  
E. COLLEGE ST

243

WAUSAU PL.

W. JACKSON

S. BROADWAY

8

E. JACKSON ST

RUCKER AV.

16

64

52

20

17

51

35'

35'

138  
109

132  
161

130  
130

128  
151

116  
124

112  
119

110  
121

108  
133

106  
131

104  
129

102  
127

100  
125

98  
123

100  
121

98  
119

96  
117

94  
115

92  
113

90  
111

88  
109

86  
107

84  
105

82  
103

80  
101

78  
99

76  
97

74  
95

72  
93

70  
91

68  
89

66  
87

64  
85

62  
83

60  
81

58  
79

56  
77

54  
75

52  
73

50  
71

48  
69

46  
67

44  
65

42  
63

40  
61

38  
59

36  
57

34  
55

32  
53

30  
51

28  
49

26  
47

24  
45

22  
43

20  
41

18  
39

16  
37

14  
35

12  
33

10  
31

8  
29

6  
27

4  
25

2  
23

0  
21

0  
19

0  
17

0  
15

0  
13

0  
11

0  
9

0  
7

0  
5

0  
3

0  
1

0  
0

0  
0

0  
0

0  
0

0  
0

0  
0

0  
0

0  
0

0  
0

0  
0

0  
0

0  
0

0  
0

0  
0

0  
0

0  
0

0  
0

0  
0

0  
0

0  
0

0  
0

0  
0

0  
0

0  
0

0  
0

0  
0

0  
0

0  
0

0  
0

0  
0

0  
0

0  
0

0  
0

0  
0

0  
0

0  
0

0  
0

0  
0

0  
0

0  
0

0  
0

0  
0

0  
0

0  
0

0  
0

0  
0

0  
0

0  
0

0  
0

0  
0

0  
0

0  
0

0  
0

0  
0

0  
0

0  
0

0  
0

0  
0

0  
0

0  
0

0  
0

0  
0

0  
0

0  
0

0  
0

0  
0

0  
0

0  
0

0  
0

0  
0

0  
0

0  
0

0  
0

0  
0

0  
0

0  
0

0  
0

0  
0

0  
0

0  
0

0  
0

0  
0

0  
0

0  
0

0  
0

0  
0

0  
0

0  
0

0  
0

0  
0

0  
0

0  
0

0  
0

0  
0

0  
0

0  
0

0  
0

0  
0

0  
0

0  
0

0  
0

0  
0

0  
0

0  
0

0  
0

0  
0

0  
0

0  
0

0  
0

0  
0

0  
0

0  
0

0  
0

0  
0

0  
0

0  
0

0  
0

0  
0

0  
0

0  
0

0  
0

0  
0

0  
0

0  
0

0  
0

0  
0

0  
0

0  
0

0  
0

0  
0

0  
0

0  
0

0  
0

0  
0

0  
0

0  
0

0  
0

0  
0

0  
0

0  
0

0  
0

0  
0

0  
0

0  
0

0  
0

0  
0

0  
0

0  
0

0  
0

0  
0

0  
0

0  
0

0  
0

0  
0

0  
0

0  
0

0  
0

0  
0

0  
0

0  
0

0  
0

0  
0

0  
0

0  
0

0  
0

0  
0

0  
0

0  
0

0  
0

0  
0

0  
0

0  
0

0  
0

0  
0

0  
0

0  
0

0  
0

0  
0

0  
0

0  
0

0  
0

0  
0

0  
0

0  
0

0  
0

0  
0

0  
0

0  
0

0  
0

0  
0

0  
0

0  
0

0  
0

0  
0

0  
0

0  
0

0  
0

0  
0

0  
0

0  
0

0  
0

0  
0

0  
0

0  
0

0  
0

0  
0

0  
0

0  
0

0  
0

0  
0

0  
0

0  
0

0  
0

0  
0



DEC. 1925  
GEORGETOWN  
KY.



Scale of Feet.  
0 50 100 150  
Copyright 1925 by the Sanborn Map Co.



S. HAMILTON



DEC. 1925  
GEORGETOWN  
Ky.

9

9

E. MAIN



3

CONSTITUTION

ZION BAPTIST CHURCH  
(COLORED)  
REV. STEVEN LAWRENCE

S. MULBERRY

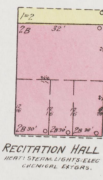
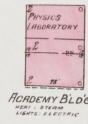
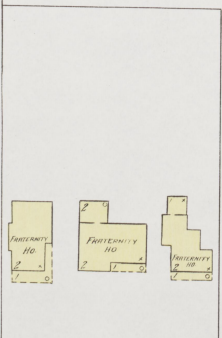
E. COLLEGE

8

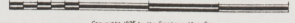
56

GEORGETOWN COLLEGE

ALL BLDGS ARE REVERED FROM CORREL. HALL



Scale of Feet.



13 E. JACKSON  
QUINN ST.

Copyright 1928 by the Searson Map Co.



10

5

DEC. 1925  
GEORGETOWN  
KY.

10

E. MAIN



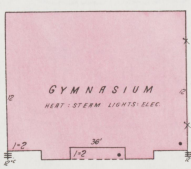
PRIVATE DRIVE

9



E. COLLEGE

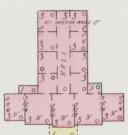
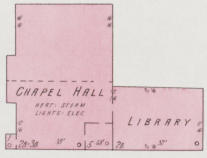
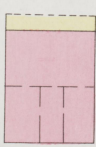
S. MILITARY



GEORGETOWN COLLEGE  
ALL BUILDINGS ARE HEATED FROM CHAPEL HALL

GEORGETOWN COLLEGE ATHLETIC FIELD

56



CHAPEL BUILDING

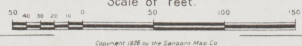
PAWLING HALL  
BOYS' DORMITORY  
HEAT, STEAM, LIGHTS, ELEC. BOYS' DORMITORY

E. JACKSON

14

DUDLEY AV.

Scale of Feet.



Copyright 1925 by the Sanborn Map Co.



DEC. 1925  
GEORGETOWN  
KY.

11

11

6

E. MAIN

WARRENDALE AV.

S. MADDOX

E. COLLEGE

10

E. COLLEGE ST.

S. MILITARY

12

E. 15 JACKSON

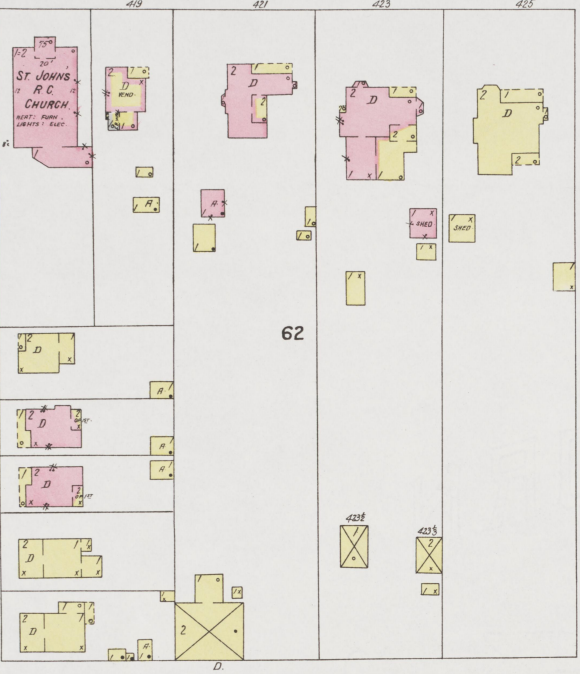


Scale of Feet.  
0 50 100 150

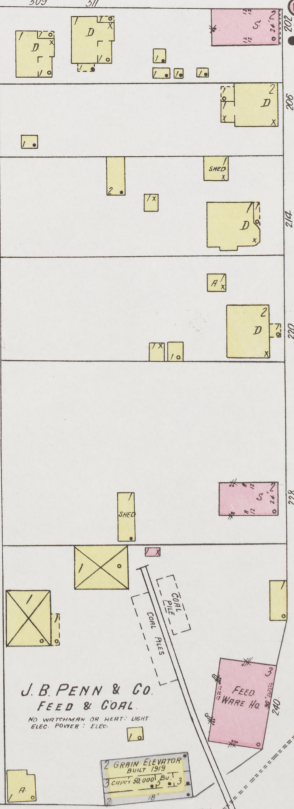
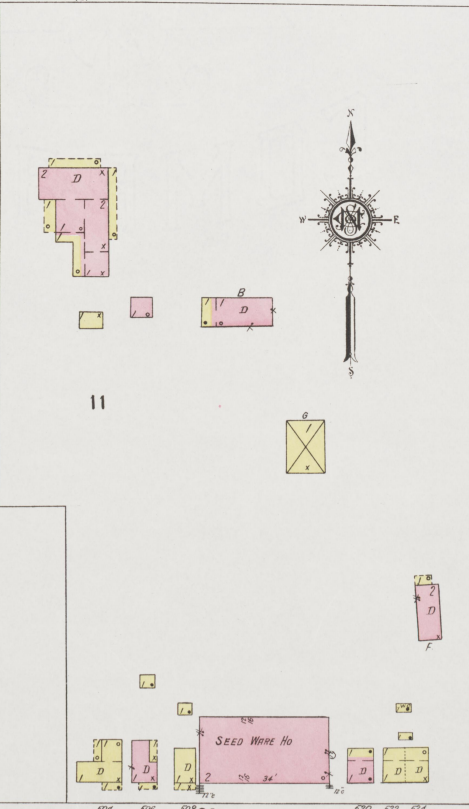
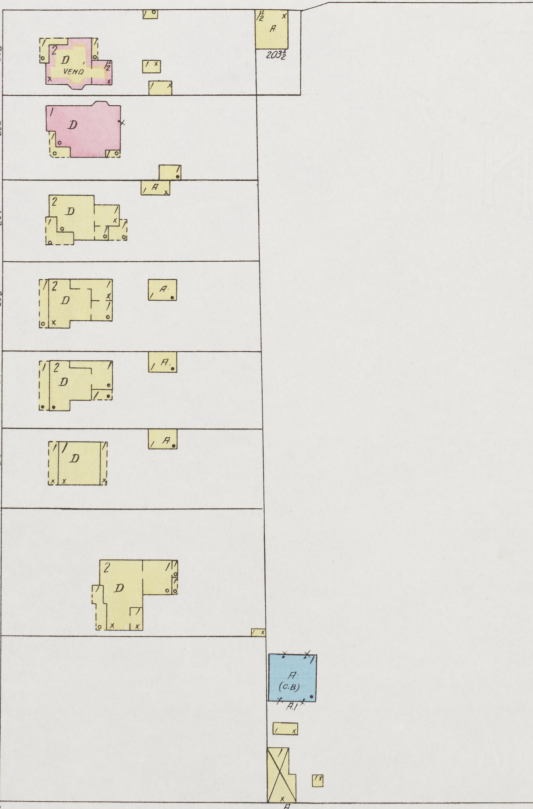
Copyright 1925 by the Standard Map Co.

FOUNTAIN AV.

AVONDALE AV.



G. M. TAYLOR FEED CO.  
PUNKS & MEAS. FEED. 1178. NO. WATSONSON OR HEAT. LIGHT. ELEC. POWER. FEED.  
SEED MILL



J. B. PENN & CO.  
FEED & COAL  
NO. WATSONSON OR HEAT. LIGHT. ELEC. POWER. FEED.

FEED WARE HO.

GRAIN ELEVATOR  
COUNT 280000  
NO. WATSONSON OR HEAT. LIGHT. ELEC. POWER. FEED.

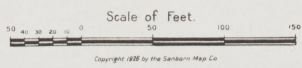


E. MAIN

12

12

DEC. 1925  
GEORGETOWN  
KY.



Located 1/2 mile N.W. of Court Ho.

OLD FLOOR MILL  
DISCONTINUED  
THOMPSON'S

Elkhorn Creek

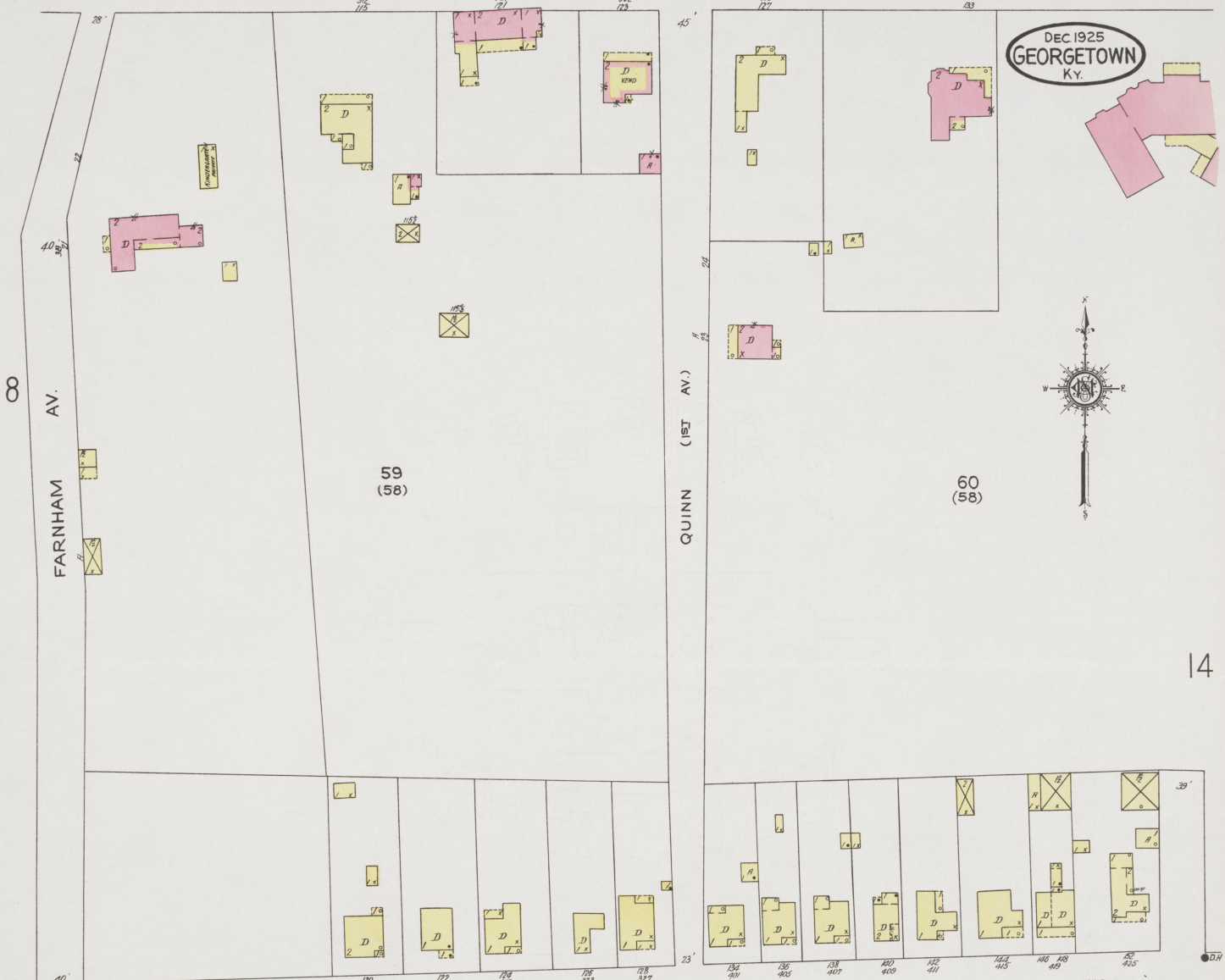


13

13

E. JACKSON

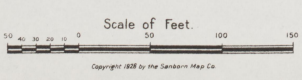
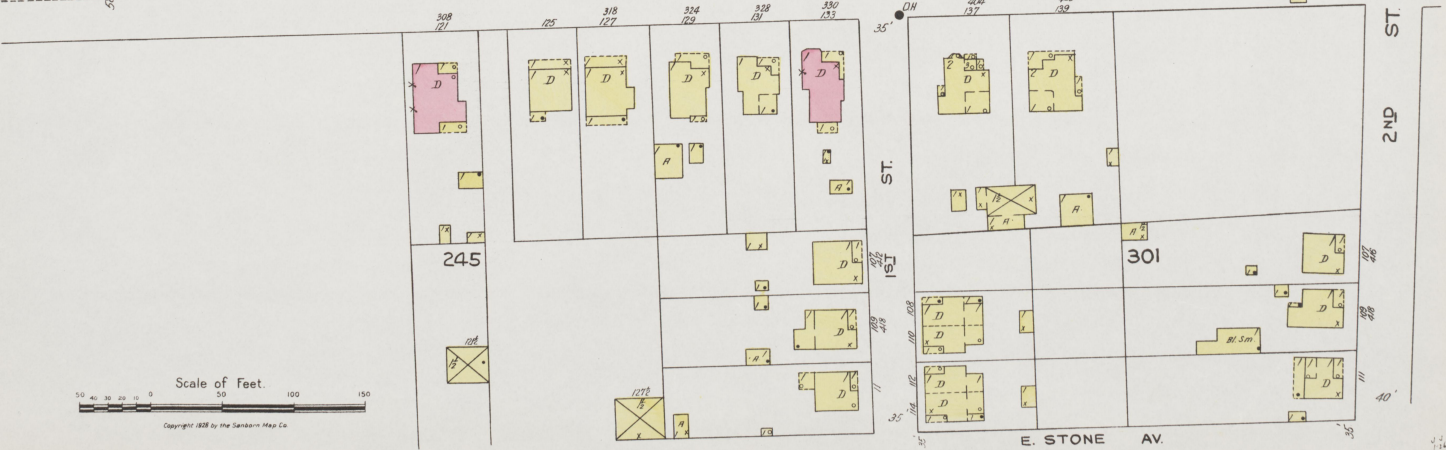
DEC. 1925  
GEORGETOWN  
KY.



14

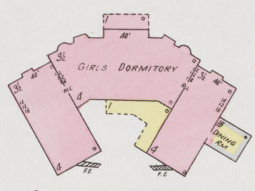


E. CLAYTON AV. (ST.)





E. JACKSON



GEORGETOWN COLLEGE  
RUCKER HALL  
MORT. STORM. LIGHT. ELEC.

60  
(58)

209

13

15

DUDLEY AV

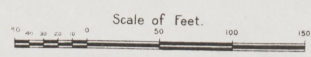
S. MILITARY

E. CLAYTON AV. (ST.)

2ND ST.

302

E. STONE AV.



Copyright 1925 by the Samsboro Map Co.

E. W. P. E.

F. W. P.

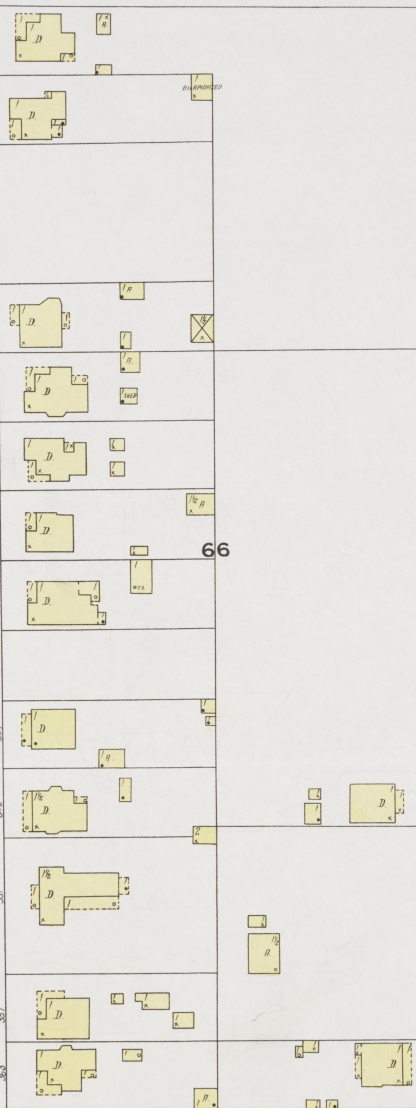


15

15

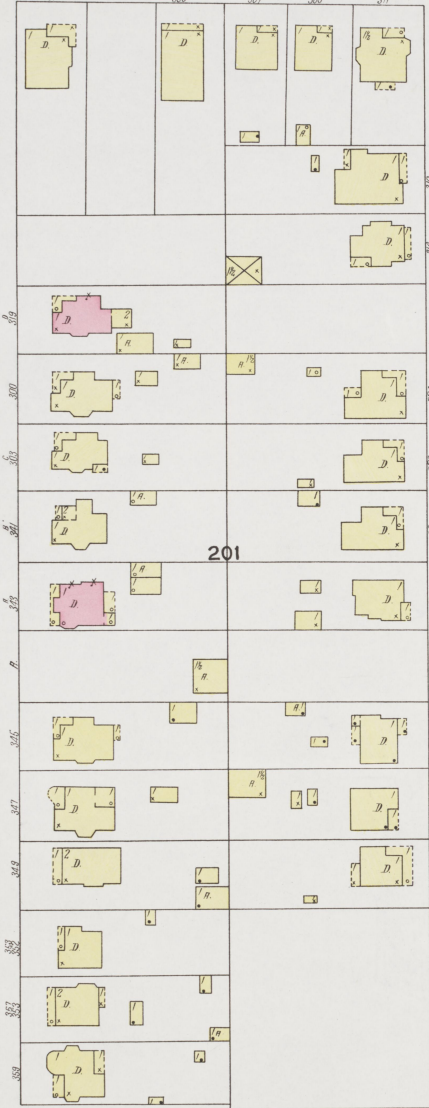
DEC. 1925  
GEORGETOWN  
KY.

E. JACKSON



14

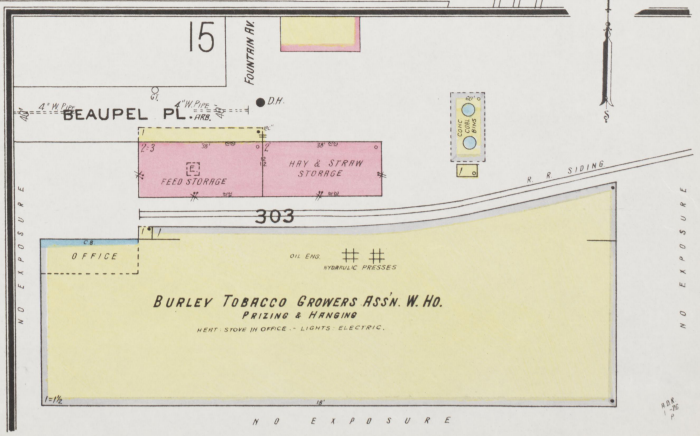
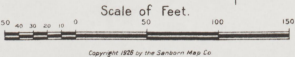
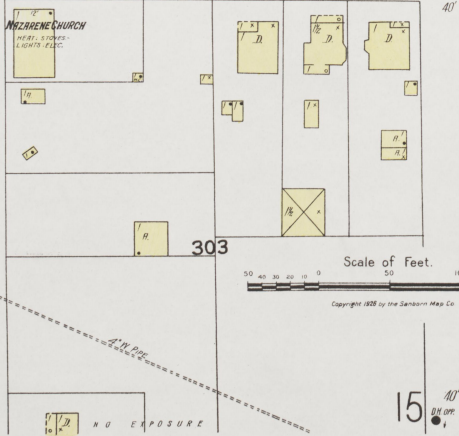
S. MILITARY



FOUNTAIN AV.

AVONDALE (AV.)

E. CLAYTON AV.



15

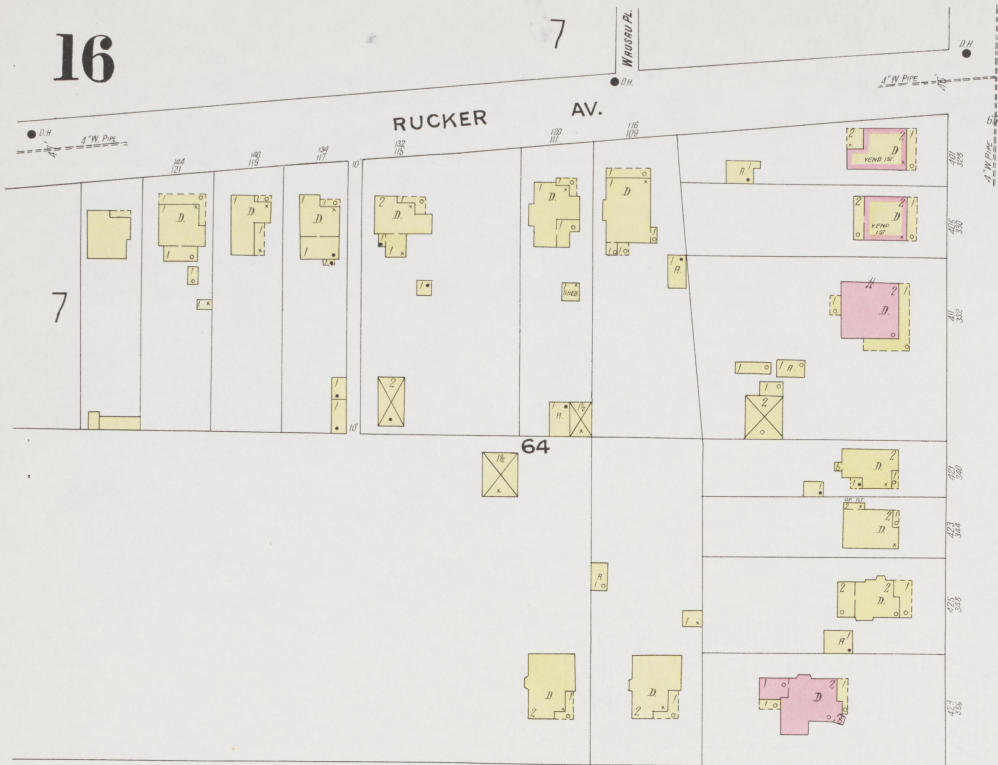
NO EXPOSURE



16

7

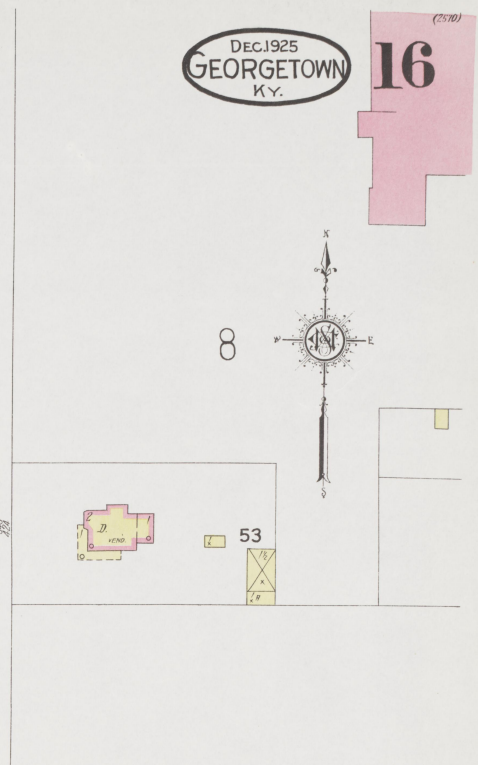
RUCKER AV.



W. CLAYTON AV. (ST.)

DEC. 1925  
GEORGETOWN  
KY.

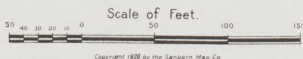
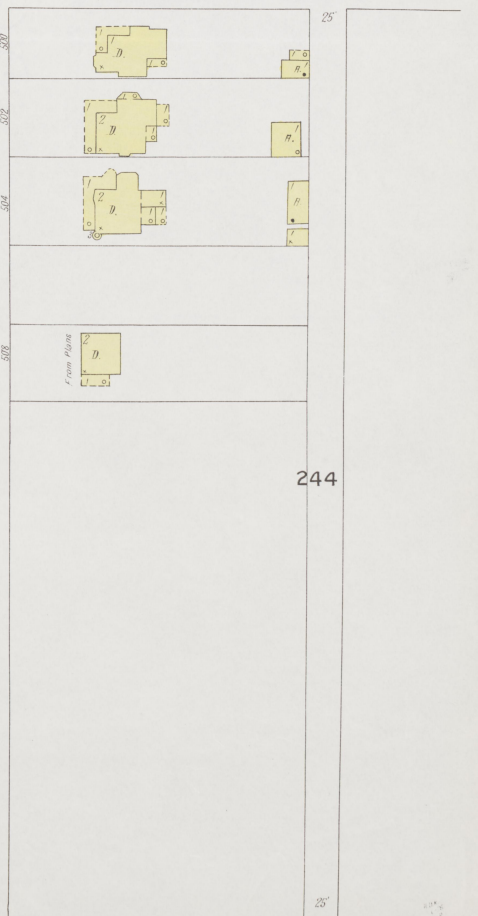
16



E. CLAYTON AV. (ST.)

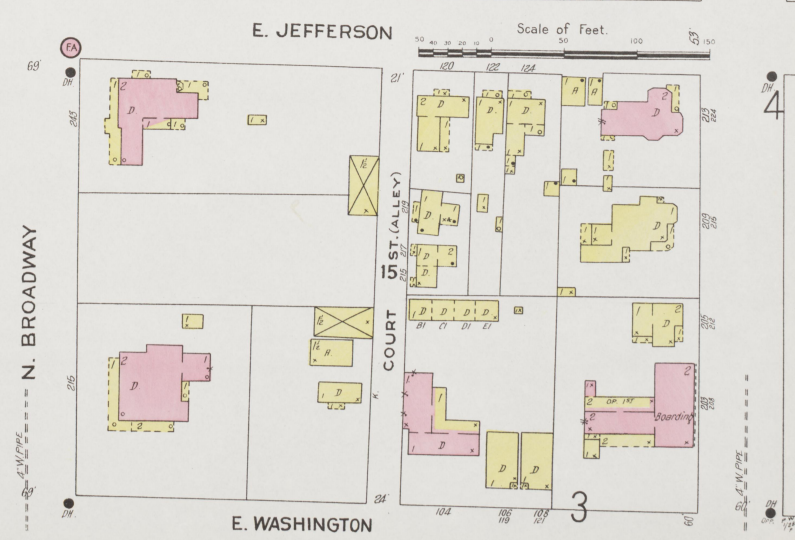
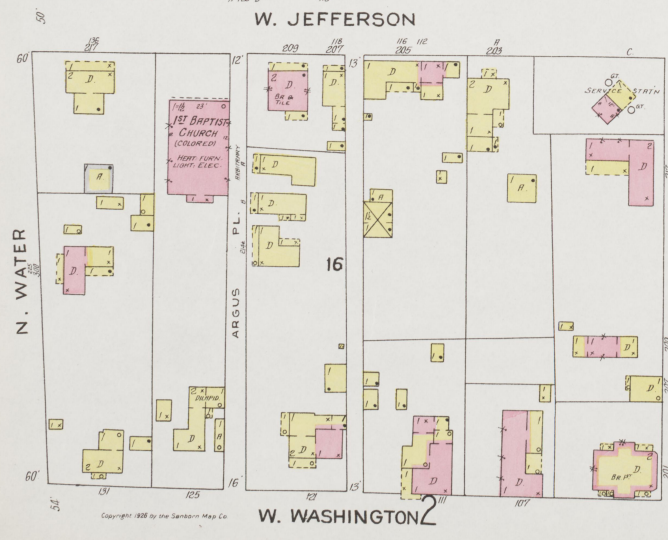
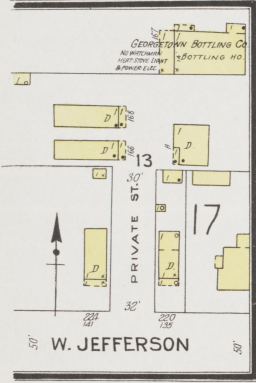


S. BROADWAY



Copyright 1925 by the Sanborn Map Co.





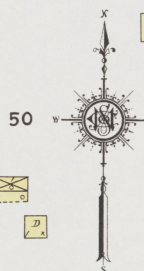
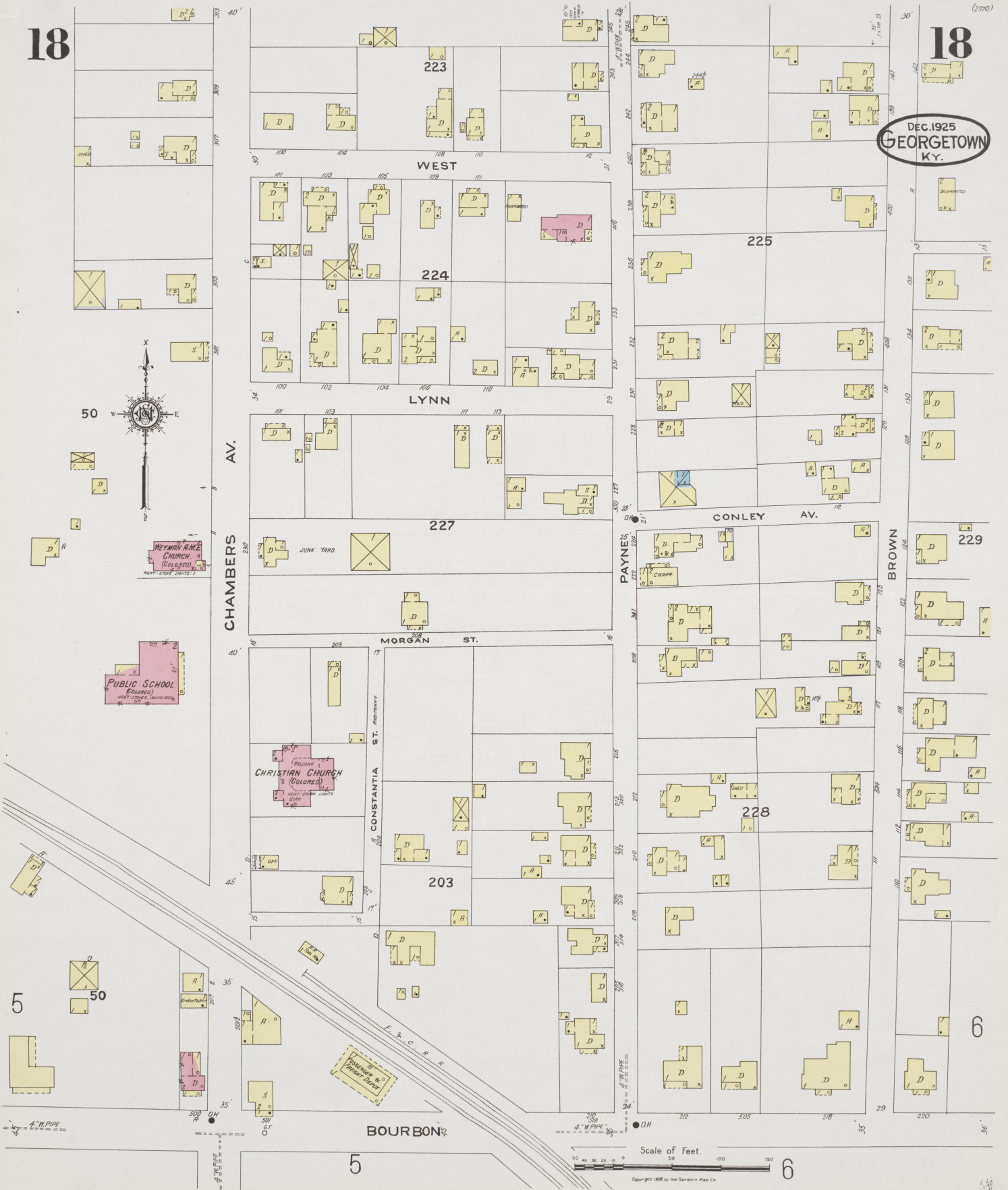


18

18

DEC. 1925  
GEORGETOWN  
KY.

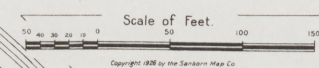
(2570)



WEYMAN HOME CHURCH (COLORED)  
NEXT ST. LIGHTS E

PUBLIC SCHOOL (COLORED)  
NEXT ST. LIGHTS E

CHRISTIAN CHURCH (COLORED)  
NEXT ST. LIGHTS E



Copyright 1925 by the Sanborn Map Co.



DEC. 1925  
GEORGETOWN  
KY.

