

KENTUCKY



NOTRE DAME

TUESDAY
DECEMBER 29, 1970
8:00 P. M.

OFFICIAL
PROGRAM
50c

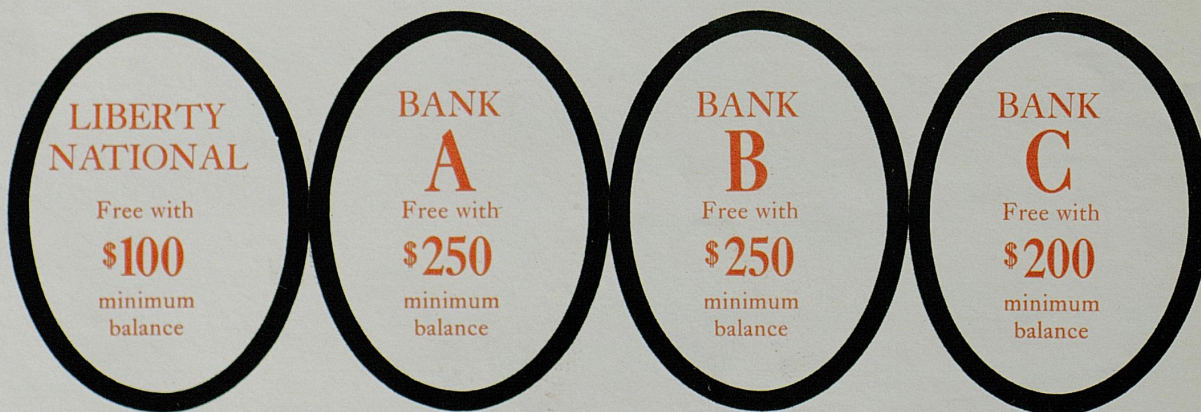


KENTUCKY FAIR & EXPOSITION CENTER

Just how "free" is your checking account?

Notice that not one of the four largest banks in Jefferson County offers totally free checking, without a minimum or average balance stipulation. Here are the facts.

Judge for yourself



Liberty
NATIONAL BANK
& TRUST COMPANY

MEMBER OF THE FEDERAL DEPOSIT INSURANCE CORPORATION

"One Stop Rental Service"
SOUTHERN RENTALS
SOUTH

3120 S. Preston — 636-1336
 3955 Dixie Hwy. — 448-7202

Welcome to Louisville, Come In and Browse Around

READMORE, INC.

See Our Beautiful Jewelry, Souvenirs,
 Greeting Cards & Various Kinds of Paperback Books

648 South 4th Street
 Dial 584-9552

SOUTHLAND ELECTRICAL SUPPLY CO., INC.

215 E. Jefferson

Louisville, Kentucky 40202

587-6671

SPONSORS

American Brass & Aluminum

Tafel Motors



Kenton Hayes

HAYES, FOSTER & UTLEY
 INCORPORATED

3923 BARDSTOWN ROAD
 LOUISVILLE, KENTUCKY 40218
 Telephone: 459-4222

HEADQUARTERS FOR P. S. — PERSONAL SERVICE



ALL LINES OF INSURANCE



"A Toast to the Winner"
Gracious Dining At A
Moderate Price

CARRY OUT SERVICE
 AMPLE PARKING
 Over 30 Different Meals To Choose
 EACH ONE A WINNER

Open
 7 Days

426-1027

11 A.M.
 1 A.M.

4901 BROWNSBORO RD.



1 Block East of
 Watterson X-Way
 At Hwy. 22 & 42



STATE SPECIAL POLICE, INC.

Road Patrol — Uniform Guards — Plain Clothes

COMMERCIAL — INDUSTRIAL — PLANT
 24 HOUR

3803 Southern Pkwy.

366-2111

ASSOCIATE GENERAL AGENT - ODIE SPEARS

• ESTATE PLANNING • BUSINESS INSURANCE

Lincoln National
Life Ins. Co.

• PENSIONS

600 STARKS BLDG., LOUISVILLE, KY. PHONE 584-0281

YOUR HEADQUARTERS FOR



AUTHORIZED SALES & SERVICE
 COMPLETE SERVICE & PARTS — DEPARTMENTS —
 COMPLETE TRUCK DEPARTMENT
 24 HOUR WRECKER SERVICE
 YOUR HOMEOWNED FORD DEALER

241-8356

241-8828

LEE & CARPENTER FORD
INC.

JUST IS MINUTES FROM LOUISVILLE
 CRESTWOOD LAGRANGE RD.

Mason McDonald
& Sons

Dry Wall

4244 Westport Terrace

Phone 896-0685 — 425-6473

When you build — build with the best

BOLAND - MALONEY
 LOUISVILLE'S LEADING
Lumber Company

913 East Main Street

584-6121

Wildcat 1970-71 Outlook

Despite the loss of All-American Dan Issel, who set or tied 23 individual season records and 18 individual career records, and Mike Pratt, a two-time All-Southeastern Conference forward, Coach Adolph Rupp's Wildcats still are favorites to capture their fourth consecutive Southeastern Conference Championship.

Giving the nation's winningest coach (836 victories, 177 losses) reason to smile is a returning corps of lettermen, who last year helped set or tie 17 team season records, and some fine prospects from the '70 freshman team.

Since the guard corps of Terry Mills, Dinwiddie, Kent Hollenbeck and Stan Key returns intact, the big job is to fill the vacancies left by Issel and Pratt.

A prime candidate for the center position is Mark Soderberg, a 6-8 letterman who played in relief of Issel last season. When Issel fouled out with over 10 minutes left against Jacksonville in the final

of the NCAA Mid-East regional, Soderberg came in and gave a fine performance to lead the Wildcats from an 11-point deficit to a chance to win before Jacksonville iced it in the last 30 seconds.

Challenging the big Californian will be Jim Andrews, 6-11, who averaged 28.4 points and 13.8 rebounds per game for last year's freshman team. The big native of Lima, Ohio, hit 55.5 per cent of his field goal attempts.

Also eligible for competition is Tom Payne, a 7-foot high school All-American who averaged 22 points and 15 rebounds for the Lexington AAU team last season and was selected the league's most valuable player.

The center position is apparently a three-way battle. So is the forward post vacated by Pratt, who averaged 19.3 points and 9.4 rebounds. Returning after being named SEC "Sophomore of the Year" is Tom Parker, a 6-6 southpaw who came off the bench in early February and started against Mississippi after roommate Larry Steele received a wrist injury in practice. Parker, who had played sparingly to that point, averaged 18 points and 10 rebounds in a starting role, averaged 50.4 per cent from the field and finished as the team's third high scorer with 260 points, an average of 10.4 points and 7.2 rebounds per game.

The squad also will be strengthened by the return of Mike Casey, a two-time All-SEC performer who missed last season after receiving a broken leg in an auto accident in the summer of 1969. Casey, starting guard on the 1968-69 Wildcat NCAA squads, is 16th on the list of top all-time Kentucky scorers with an average of 19.9 points a game. He also holds the UK assists record of 129 in a single season.

NCAA CHAMPIONS — Four Times (1948, '49, '51, '58) in 18 Appearances. 29 Victories.

NIT CHAMPIONS — 1946. **SUGAR BOWL CHAMPIONS** — Five Times.

UK INVITATIONAL CHAMPIONS — Twelve Times in 17 Tournaments.

SEC CHAMPIONS — Record 25 Times Since 1933. (Last in 1970.)

WORLD OLYMPIC GAMES — 1948 Olympic Games.

INTERNATIONAL UNIVERSITIES TOURNAMENT CHAMPIONS — 1966.

NATIONAL CHAMPIONS BY POLLS — Six Times Since 1949.

ALL-TIME RECORD — Won 1,041, Lost 323, Tied 1 in 67 Seasons.

ADOLPH RUPP — 40 Years As Head Coach (Nation's Winningest — Won 836, Lost 177 — 82.5%).

KENTUCKY ALL-AMERICANS — 25 Players Honored 37 Times.

ALL-SOUTHEASTERN — 48 Players Honored 85 Times.

PROFESSIONALS — 28 Players Entered Ranks.

MEMORIAL COLISEUM (11,500) — Home Floor Since 1950 (Won 240, Lost 30).

RECORD HIGH POINTS — 143 vs. Georgia (Neutral Site) '56 — At Home 116 vs. Georgia '70.

INDIVIDUAL HIGH — 53 By Dan Issel in 1970 vs. Mississippi at Oxford.

BIGGEST VICTORY MARGIN — 77 vs. Georgia in 1956 — At Home, 53 vs. Georgia Tech '56, Georgia '59.

We Are on the Way



HEATING OIL



With Prompt Payment

776-2495



BALLARD PETROLEUM CORPORATION

ESTABLISHED 1899
3000 GRIFFITH AVE.

ITS CRYSTAL CLEAR
MADE CLEAN TO BURN CLEAN CLEAR THROUGH

- Automatic "Keep Fill" Service
- Metered Delivery
- Budget Payment Plan
- Careful, Courteous Deliveries
- 24-Hr. Emergency Service

BRANTLEY CROWD ENGINEERING

"40 Years Experience"

- TICKET SELLERS • TICKET TAKERS • TRAFFIC DIRECTORS
- GUARDS • PARKING ATTENDANTS • USHERS
- UNIFORMED POLICEMEN (With power of arrest)

Louisville's Oldest Established & Experienced Crowd Handling Service

MRS. LUCILLE BRANTLEY, President

CALL US FOR RATES 366-0265 — P. O. BOX 17181 — LOUISVILLE, KY. 40217

CONGRATULATIONS TO KENTUCKY &
NOTRE DAME FOR THIS AND PAST
SPORTS ENTERTAINMENT TO LOUISVILLIANS
from

**JAMES A. RUSSELL'S
IROQUOIS REALTORS**
4026 So. 3rd St.

KLEMPNER BROS.
SCRAP IRON & STEEL

1371 Lexington Rd. — 584-5391
River Plant — 301 East River Rd.

IT'S A SMALL WORLD

A CITY UNDER ROOF

A & P
A. DAVID LTD.
ALICE LACE SHOP
ANTICIPATION MATERNITY
ARTISTE HAIRSTYLISTS
L. S. AYRES & CO.
BAKER'S SHOES
BELL BROS. SHOES
BENNET'S
BERNARD'S WIGS
BLUE BOAR CAFETERIA
BOMBAY
BONDS
BROOKS FASHIONS
CAN-DO SHOP
CARD MART
CHRISTOPHER ROBIN
CINDERELLA SHOE
CYGNET SHOP
DAIRY QUEEN
DOCKTOR PET CENTER

ECONOMY OPTICAL
EMORY'S
FIRESTONE
1ST NATIONAL BANK
FLAGG BROS. SHOES
FLEISCHER'S
GENERAL NUTRITION
GLENDAERIE
HOUSE OF NINE
JACQUES RENEE
KAY JEWELRY
KINNEY SHOES
KNOTTS SHOES
LA CRAVATE
LAMBERT'S BAKERY
LOWE BROS.
MALL BARBER SHOP
MARIANNE SHOP
MARY LESTER FABRICS
MISS "T"
NATIONAL SHIRT
PARKLANE HOSIERY
PATIO LOUNGE

PENNEY'S
PICCADILLY
RITZ CAMERA
RODES
ROSE'S
RUSSELL STOVER
SHACKLETON'S
SINGER SEWING
SPENCER GIFTS
STEVENSON'S BOOKS
SUSIE'S CASUALS
SWISS CLEANERS
SYCAMORE SHOP
TAYLOR DRUGS
TAYLOR TRUNK
TREND APPLIANCE
TURNER HOUSE
TWEED SHOP
VARIETY RECORDS
THE WHARF
WILL SALES

SHELBYVILLE ROAD AT WATTERSON EXPRESSWAY

COACH ADOLPH RUPP

Kentucky's legendary "Baron of Basketball" passed his 1,000th game as coach of the Wildcats during the middle of last season and the occasion was duly recorded and celebrated.

During the span which began with a 67-19 victory over Georgetown a week before Christmas in 1930, Rupp has garnered every major honor afforded his profession.

Entering the current season, he reigns as president of the National Association of Basketball Coaches and is a full-fledged member of the Naismith Memorial Basketball Hall of Fame, having been inducted into that shrine at Springfield, Mass., in the spring of 1969.

It is fitting that Rupp should occupy a hallowed niche in the Hall of Fame. During his collegiate days as a guard in two national championship teams at the University of Kansas, he was personally acquainted with Dr. Naismith, inventor of basketball and a faculty member at Kansas. Rupp's coach was the veteran Forrest Claire (Phog) Allen, who is past 80 and today lives quietly in retirement among his friends, souvenirs and memories in Lawrence, Kansas.

Rupp visited Allen during a weekend stay in Lawrence last spring.

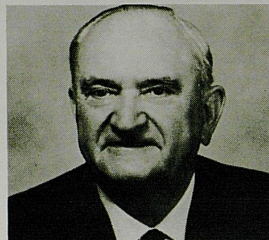
The occasion was Commencement exercises at the University, where alumnus Rupp received the Distinguished Service Citation, highest honor the University and Alumni Association bestow. The citation was presented before a packed house in Allen Field House by Chancellor E. Laurence Chalmers.

The honor undoubtedly was a high point in a star-studded coaching, business and civic career which has elevated Rupp to the loftiest standing ever achieved by a collegiate basketball coach.

During the 1969-70 season, he overcame many unexpected and almost catastrophic setbacks to lead his team to the No. 1 rating in all national basketball polls.

The first blow came in the summer of 1969, when two-time All-SEC guard Mike Casey received a broken leg (in three places) in an automobile accident and was out for the season.

Rupp also had foot trouble aggravated by diabetes and was ordered to bed as pre-season practice got under way. He left the bed only to attend practice sessions and utilized a foot rest during early season games.



Also during the season, All-SEC forward Mike Pratt received a broken nose, All-American center Dan Issel received a severe stone bruise which undoubtedly was a factor in the Wildcats' only regular season loss — to Vanderbilt — and two-year starter Larry Steele broke a wrist bone.

Despite the adversities, Rupp coached his team to its 25th SEC championship since the league was organized in 1933. En route to their record 18th appearance in the NCAA Tournament, the Wildcats set or tied 17 team records and went on the book as the most potent offensive unit in the school's fine basketball history.

The 26-2 record brought Rupp's score to 836 victories against only 177 losses, an amazing 82.5 winning percentage against the best opposition the nation could offer.

The magic of Rupp naturally has resulted in an increasing demand for that most scarce Kentucky product — a ticket to a University of Kentucky basketball game. For the past several years, there has been no public sale of the precious tickets; students, faculty, staff and holders of coveted season priorities are allotted the approximately 11,500 available seats and the waiting list grows longer and longer.

Coach Rupp is active in Shrine affairs, being chosen in 1950 as one of the 10 outstanding Shriners of the nation and holding honorary memberships in temples throughout the country. He is a Past Potentate of the Oleika (Lexington) Temple and serves as vice-chairman of the board for the Shrine Crippled Children's Hospital in Lexington.

He has his own television and radio shows during the season, has produced two film shorts ("Basketball: Individual Offense" for Coca-Cola Co. and "Parade to National Championship") and written books on virtually every phase of the game.

WILDCAT COACHING STAFF

JOE B. HALL Assistant Coach

Joe B. Hall moved up as No. 1 varsity assistant to Coach Adolph Rupp after Harry C. Lancaster was named permanent athletic director Feb. 1, 1969.

Additional duties for the versatile Coach Hall include coaching the Wildcat freshman team, composed of players he came to know quite well during the recruiting season.

Coach Hall returned "home" to the University July 1, 1965, with a winning background, 126 victories against 75 losses.

He posted a 19-6 record at Central Missouri in the 1964-65 season and guided the Mules to their first MIAA Conference championship since 1951 and to their first conference Christmas Tournament title in history.

His first full year at the helm of the Kittens produced the third highest scoring freshman team in UK history. The Kittens scored 1,975 points in compiling a 16-6 ledger against the competition and finished with an 11-3 SEC record.

Hall, who was a 6-foot-1 guard on the 1949 Wildcat team, entered the coaching profession after graduation from UK in 1955. He spent two years at Shepherdsville High School, achieving Coach of the Year honor in the Mid-Kentucky Conference in 1958 as Shepherdsville finished the 12th

in the state.

Moving into the collegiate field, he served one season as freshman coach and then five years as head coach at Regis College in Denver, Colo., where he posted a 57-49 record.

In addition to his duties at Regis, Hall in 1964 coached the Capital Federal Denver post team in the AAU Tournament and was honored by selection as head coach of the AAU Stripes in the Olympic Trials at Jamaica, N. Y.

He is married to the former Katharine Dennis of Harrison County. They have three children — Judy, Kathy and Stephen.



HALL



PLAIN

T. L. PLAIN Assistant Coach

The newest member of the Wildcat staff, Plain joined Coach Rupp in July 1969 and is no stranger to the UK scene, having served as a graduate assistant for Rupp after leaving Kentucky Wesleyan College to work on an advance degree here in 1963-64. At Wesleyan, the 44-year-old Navy veteran compiled a 63-34 won-loss record while serving as athletic director, coach and associate professor of physical education from 1959-63.

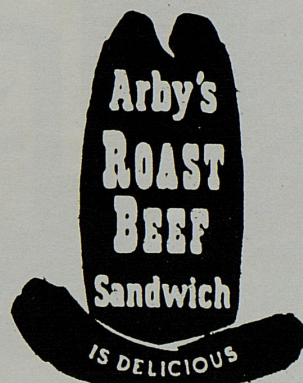
A native of Sacramento, Ky., he received his B.S. at Western Kentucky University in 1950 and later attended Murray State, Indiana University and UK. He was athletic director, teacher and coach at Breckinridge County High from 1949-53; teacher, athletic director and coach at Henderson City High from 1953-57, and teacher and coach at Lincoln High in Vincennes, Ind., from 1957-59.

Plain returned to Vincennes in 1964 as director of physical education for the Community School Corp. and basketball coach at Lincoln High. He left there in 1967 to become assistant basketball coach and assistant coordinator of the student teaching program at the University of Louisville. He is married to the former Ann Blalock of Murray. They have three children, Tom, 17, Bob, 13, and Patrick, 10.

Compliments
of your

RCA

Dealers



Arby's V.I.P. Pass

Please convey to our guest the highest degree of courtesy and consideration during his visit to ARBY'S.

Present this card for: ONE SUPER ARBY'S

Bardstown at Old Shepherdsville Rd.
Preston Hwy. in Okolona
5022 So. 3rd. St.

AMERICA'S FINEST MOTORCAR



The 1971 Lincoln CONTINENTAL

Today, as in the past 57 years, Monarch Auto offers the finest motorcars and services to the general public. We even offer a special lease arrangement for you. Is it any wonder so many successful people drive a Lincoln Continental? If you are a "Have-not-tried," call Monarch today and arrange for a test drive and a plan tailored for you.

MONARCH Lincoln-Mercury

"COUGAR CORNER"

Brook at Broadway

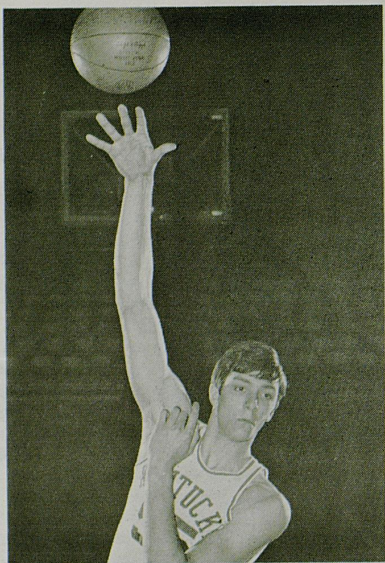
Phone 584-8216



Race Results

... Louisville's most complete & up to date ... throughout the afternoon — complete summary at 7 PM

WINN 1240



55 JIM ANDREWS
6-11 — 233 — Center
Sophomore — Lima, Ohio



34 MIKE CASEY
6-4 — 190 — Guard-Forward
Senior — Simpsonville, Ky.

Meet

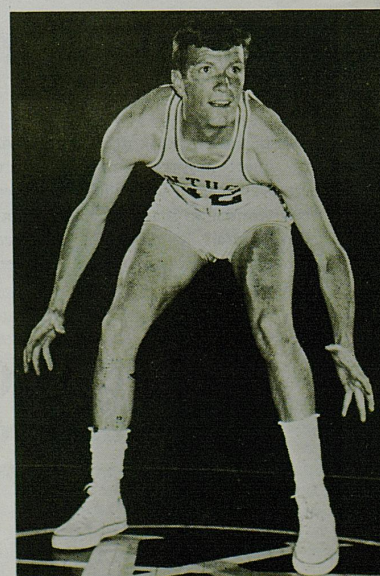
the

Kentucky

10 JIM DINWIDDIE
6-4 — 190 — Guard
Senior — Leitchfield, Ky.

Wildcats

32 KENT HOLLENBECK
6-4 — 190 — Guard
Junior — Knoxville, Tenn.





We invite you to visit our home... where America's finest cigarettes are made

Many years ago, when Philip Morris first came to the Blue Grass Country of Kentucky, we found a land of opportunity, friendly people, and the world's finest Burley tobacco.

The people of Louisville have always made us feel welcome, and we're glad we came here. In our own way, we try to return your hospitality.

Someday soon we would like your family to meet ours. Nothing formal. Just stop in and visit awhile. We're proud of our products and our people, and we'd like you to see why.

We're at 18th and Maple, right here in Louisville.

Come any weekday from 8 to 11:30 and 1:00 to 3:30.

Philip Morris Inc.

The best of everything for people who like to smoke.



EIGHT
ACRES
of
NEW
and
USED
CARS

- MOST MODERN SERVICE DEPARTMENT AND BODY SHOP IN LOUISVILLE
- LOWER PRICES - HIGHER ALLOWANCES

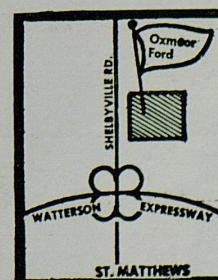
"Everyone Can Afford An Oxmoor Ford"

LOW BANK RATE FINANCING - OPEN MONDAY, WEDNESDAY, FRIDAY UNTIL 9 P.M.

OXMOOR

SHELBYVILLE ROAD, ONE BLOCK
EAST OF WATTERSON EXPRESSWAY

AT OXMOOR SHOPPING CENTER
426-2500





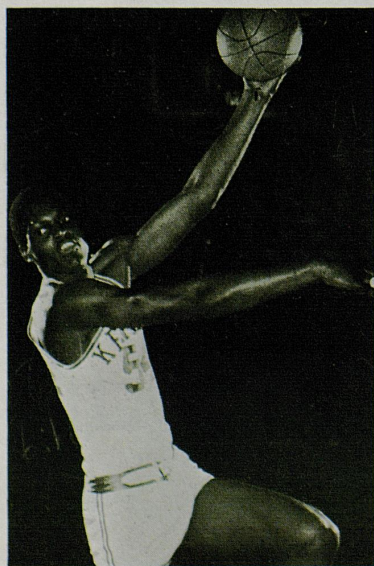
30 STAN KEY
6-3 — 186 — Guard
Junior — Hazel, Ky.



21 TERRY MILLS
6-2 — 185 — Guard
Senior — Barbourville, Ky.

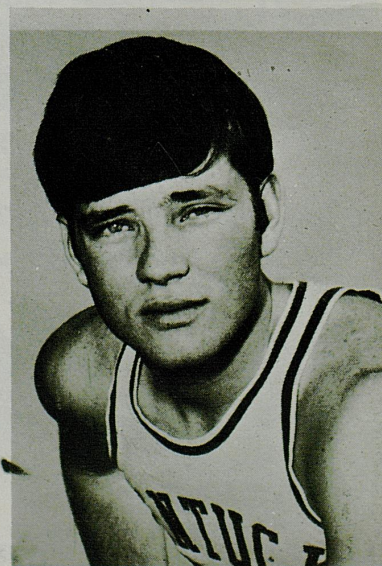


12 TOM PARKER
6-7 — 215 — Forward
Junior — Collinsville, Ill.



54 TOM PAYNE
7-0 — 235 — Center
Sophomore — Louisville, Ky.

24 STEVE PENHORWOOD
6-4 — 185 — Guard
Sophomore — Lima, Ohio



HEY! SEE YOU AT



Sandy's

THRIFT 'N SWIFT

DRIVE-IN

**1420 POPLAR LEVEL RD.
TWO BLOCKS SOUTH OF EASTERN PARKWAY**

5009 SOUTH THIRD



KENNY WILLIAMS



ELECTRIC CONTRACTORS
COMMERCIAL — RESIDENTIAL

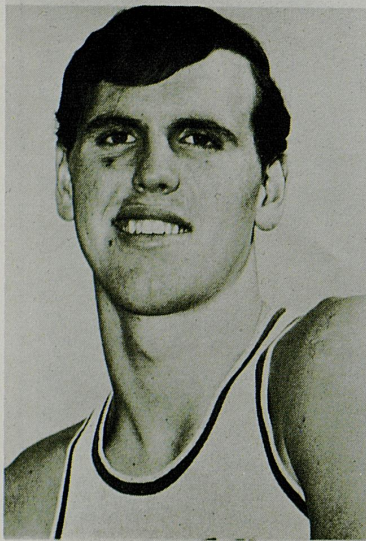
**REWIRING - REPAIRS
NEW INSTALLATIONS**

**Prompt Service To
All of Jefferson County**

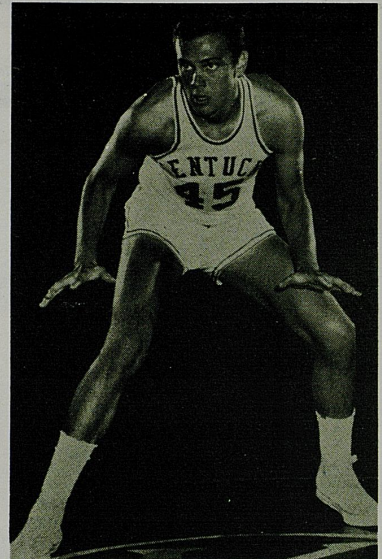
FREE ESTIMATES

937-3245

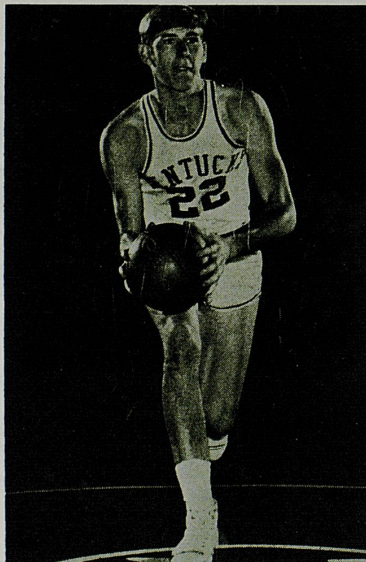
**WIRING FOR AIR CONDITIONERS, RANGES & DRYERS
5402 VALLEY STATION ROAD**



42 DAN PERRY
6-8 — 210 — Forward
Sophomore — Lima, Ohio

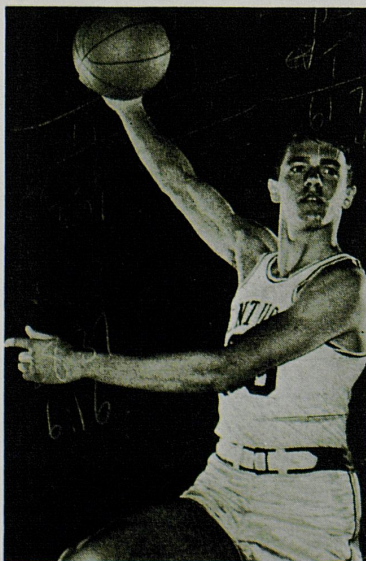


45 MARK SODERBERG
6-10 — 224 — Forward
Junior — Huntington Beach, Calif.

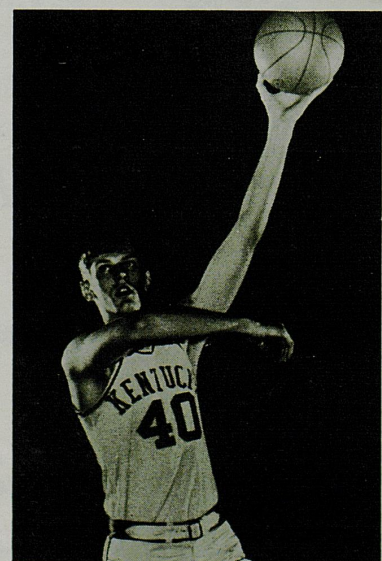


25 LARRY STEELE
6-5 — 185 — Forward
Senior — Bainbridge, Ind.

40 CLINT WHEELER
6-7 — 208 — Center-Forward
Senior — Ashland, Ky.



22 LARRY STAMPER
6-6 — 200 — Forward
Sophomore — Beattyville, Ky.



DINERS FUGAZY TRAVEL



ESTABLISHED 1870



No Charge for Our Service

WE *SPECIALIZE* IN INTERNATIONAL TRAVEL

INDEPENDENT TOURS — ESCORTED TOURS

AIRLINES — STEAMSHIPS — CRUISES

THINK OF TRAVEL — THINK OF US!

CALL US FOR BROCHURES

WILLIAM FAVERSHAM
Branch Executive

SARAH K. SANDUSKY
Branch Manager

897-3326

2843 Brownsboro Rd.—Brownsboro Bldg. West

Louisville, Ky., 40206

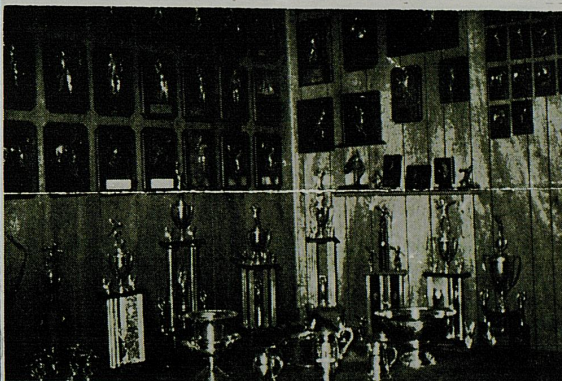
Free Parking Rear of Building

"Buy From The Manufacturer"

"Where Prices Are Right"

SEE GIL LIEBERT
VISIT OUR NEW SHOW ROOM

Store Hours: Mon., Thur., Fri. 8 - 5; Sat. 9 - 12



SCHOLL TROPHIES, Inc.

3008 Magazine St.

Louisville, Ky. 40211

Phone 776-2411

or Phone 776-2412

STARCRAFT ALUMINUM
ROAMER By CHRIS CRAFT
SLICK CRAFT CRUISERS

GLASTRON FIBERGLAS
BOATEL HOUSEBOATS
DRIFTER HOUSEBOATS



JOHNSON SEA -HORSE MOTORS

FALLS CITY BOAT WORKS

4th & River

584-6308

Louisville, Ky.

Dependable Service Since 1925

BUY FROM THE LEADER

• CHRYSLER • PLYMOUTH • IMPERIAL

Perkins

WE REALLY WILL TAKE LESS!

2105 DIXIE HIGHWAY

Just south of Algonquin Parkway

Go all out for Burger Queen



STOP IN
AFTER THE GAME

RYmark

HALFTIME century homes

Ky-N.D.

39-53

When you see the home,
you won't believe
the price.

(Or is it the other way around?)



RYAN HOMES

MODEL

MAIN OFFICE

267-8253

459-0530

Bob Hook

CHEVROLET

KENTUCKY 1970-

No.	Name	Pos	Cl.	Ht.	Wt.
10	JIM DINWIDDIE	G	Sr.	6-4	190
12	TOM PARKER	F	Jr.	6-7	215
21	TERRY MILLS	G	Sr.	6-2	185
22	LARRY STAMPER	F	So.	6-6	200
24	STEVE PENHORWOOD	G	So.	6-4	185
25	LARRY STEELE	F	Sr.	6-5	185
30	STAN KEY	G	Jr.	6-3	186
32	KENT HOLLENBECK	G	Jr.	6-4	190
34	MIKE CASEY	G-F	Sr.	6-4	190
40	CLINT WHEELER	F	Sr.	6-7	208
42	DAN PERRY	F	So.	6-8	210
45	MARK SODERBERG	C	Jr.	6-10	224
54	TOM PAYNE	C	So.	7-0	235
55	JIM ANDREWS	C	So.	6-11	233

HIGHLIGHTS ON Channel 3

U OF L PASADENA BOWL
NFL-AFC DIVISIONAL PLAYOFFS
ROSE BOWL
ORANGE BOWL
GATOR BOWL
NFL AMERICAN CONF. CHAMPIONSHIP
SENIOR BOWL
SUPER BOWL
BOB HOPE DESERT CLASSIC
NCAA BASKETBALL CHAMPIONSHIPS
KENTUCKY HIGH SCHOOL
BASKETBALL CHAMPIONSHIP
MAJOR LEAGUE BASEBALL
WORLD SERIES

TELEVIEWED UK/SEC BASKETBALL

Sat., Dec. 5 11:30 PM* Mich. at Ky.
Fri., Dec. 18 9:00 PM U.K.I.T.
Sat., Dec. 19 9:00 PM U.K.I.T.
Tue., Dec. 22 11:30 PM* Ore. St. at Ky.
Tue., Dec. 29 11:30 PM* Notre Dm. at Ky.
Sat., Jan. 2 11:30 PM Dayton at UCI
Sat., Jan. 9 12 noon Miss. St. at Ole Miss
Sat., Jan. 9 11:30 PM* Fla. at Ky.
Mon., Jan. 11 11:30 PM* Ga. at Ky.
Sat., Jan. 16 3:00 PM Ky. at Tenn.
Sat., Jan. 23 2:00 PM Ole Miss at G
Sat., Jan. 23 4:00 PM UCLA at Notre Dm.
Sat., Jan. 30 3:00 PM Ole Miss at LS
Sat., Jan. 30 11:30 PM* Vandy at Ky.
Mon., Feb. 1 11:30 PM Auburn at Ky.
Sat., Feb. 6 3:00 PM Fla. at Auburn
Sat., Feb. 6 11:30 PM* Ole Miss at Ky.
Mon., Feb. 8 11:30 PM Miss. St. at H
Sat., Feb. 13 3:00 PM Auburn at Ala
Mon., Feb. 20 3:00 PM LSU at Ky.
Mon., Feb. 22 11:30 PM* Ala. at Ky.
Sat., Feb. 27 1:00 PM Ga. at Fla.
Sat., Feb. 27 3:00 PM Ky. at Vandy
Sat., Mar. 6 1:00 PM Tenn. at Ky.
Sat., Mar. 6 3:00 PM Vandy at Miss. St.

*Delayed Broadcast

NOTRE DAME 1970-

No.	Name	Pos.	Cl.	Ht.	Wt.
30	BILL LUCAS	G	So.	6-4	190
31	JOHN EGART	G	So.	5-11	165
32	**TOM SINNOTT	F-G	Sr.	6-4	201
34	**AUSTIN CARR (Capt.)	G	Sr.	6-3	200
35	**JACKIE MEEHAN	G	Sr.	6-1	181
40	BILL HINGA	F	So.	6-7	190
41	**JIM HINGA	F-G	Sr.	6-4	200
42	**COLLIS JONES	F	Sr.	6-7	203
43	**SID CATLETT	F-C	Sr.	6-8	220
44	**DOUG GEMMELL	F	Jr.	6-3	185
45	DON SILINSKI	F	So.	6-3	190
52	*JOHN PLEICK	C	Sr.	6-8	236
53	JIM REGELEAN	C	So.	6-8	195

*Indicates monograms won

1970-71 VARSITY

Ht.	Wt.	Field Goals	Free Throws	Fouls	Points
6-4	190				
6-7	215				
6-2	185				
6-6	200				
6-4	185				
6-5	185				
6-3	186				
6-4	190				
6-4	190				
6-7	208				
6-8	210				
6-10	224				
7-0	235				
6-11	233				

REVISED BASKETBALL

30 PM* Mich. at Ky.
 00 PM U.K.I.T.
 00 PM U.K.I.T.
 30 PM* Ore. St. at Ky.
 30 PM* Notre Dm. at Ky.
 30 PM Dayton at UCLA
 noon Miss. St. at Ole Miss
 30 PM* Fla. at Ky.
 30 PM* Ga. at Ky.
 00 PM Ky. at Tenn.
 00 PM Ole Miss at Ga.
 00 PM UCLA at Notre Dame
 00 PM Ole Miss at LSU
 30 PM* Vandy at Ky.
 30 PM* Auburn at Ky.
 00 PM Fla. at Auburn
 30 PM* Ole Miss at Ky.
 30 PM* Miss. St. at Ky.
 00 PM Auburn at Ala.
 00 PM LSU at Ky.
 30 PM* Ala. at Ky.
 00 PM Ga. at Fla.
 00 PM Ky. at Vandy
 00 PM Tenn. at Ky.
 00 PM Vandy at Miss. St.

MAJOR SPORTS EVENTS
ARE ALWAYS SEEN ON



WHERE THE ACTION IS!

1970-71 VARSITY

Ht.	Wt.	Field Goals	Free Throws	Fouls	Points
6-4	190				
6-11	165				
6-4	201				
6-3	200				
6-1	181				
6-7	190				
6-4	200				
6-7	203				
6-8	220				
6-3	185				
6-3	190				
6-8	236				
6-8	195				

47-60 51-69
15.46 13.19

Go with a winner



FRESH DAIRY FOODS

Southern Indiana's Largest
World's Fairest



Offers The Largest Selection Of
New And Used Cars And Trucks
At The Lowest Possible Prices.

Just 10 Minutes From Downtown Louisville
Off I-65

516 S. Indiana Avenue, Sellersburg, Indiana 47172

44-470-N.D.
41970-R
30-R
26-R

MYRL'S SPORTS SERVICE

1924 W. Market

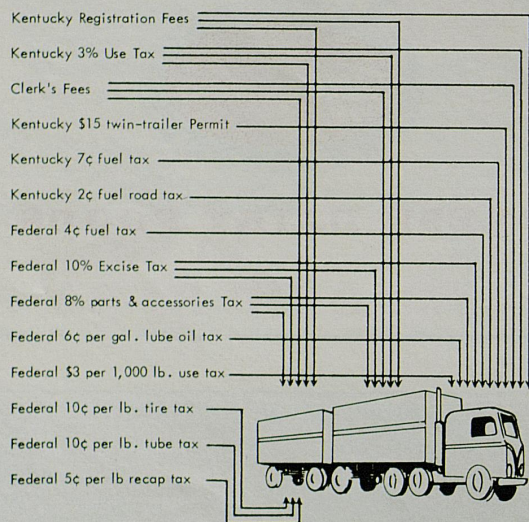
583-4748



Fishing Bait — Live Frozen — Lures
 Tackle—Rods—Reels
 Tackle Repairs
 Coleman Lamps & Stoves—Coolers
 Hunting Apparel & Supplies
 Fishing & Hunting License
 Open 7 Days - 4 a.m. - 8 p.m.
 Monday - Thursday
 Fri. Sat. & Holidays Open 24 hrs.

4-N.D.
12-TURN-RY

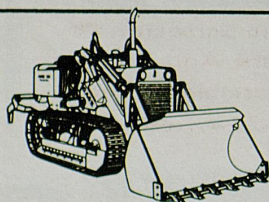
HOW MUCH DO YOU KNOW ABOUT... TRUCK TAXES?



--plus state and local property and real property taxes, income taxes, etc.--

Swiss — CAPITAL
 CLEANERS / LAUNDRY
Have a happy day!

AT YOUR DOOR
 PHONE 583-7621
 OR NEIGHBORHOOD STORE



IF YOU MOVE DIRT

...MOVE IT FASTER,
 MORE EASILY, LESS
 EXPENSIVELY with a

CASE Continuous Action Crawler

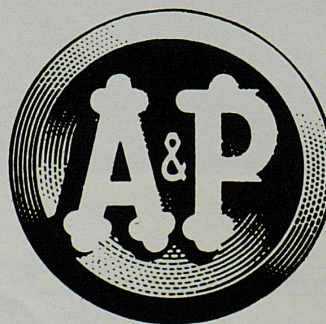
- * Effortless, one-hand control of all functions—turning, shifting, changing directions.
- * Independent Control & Power on each Track.
- * Springless suspension system that irons out shocks, insures maximum traction, allows up-hill turns, superior stability.

584-9753

HUNT TRACTOR & EQUIPMENT CO., INC.

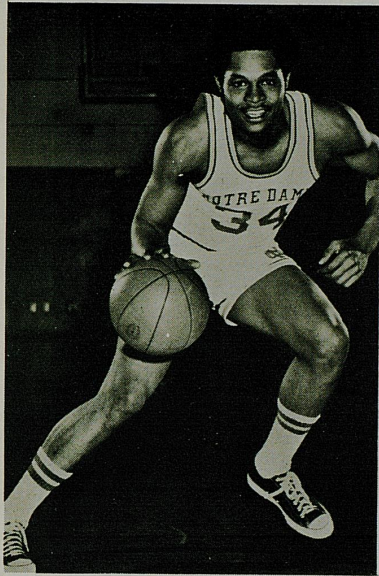
SALES & RENTALS

1000 E. Market St. Louisville, Ky. 40206



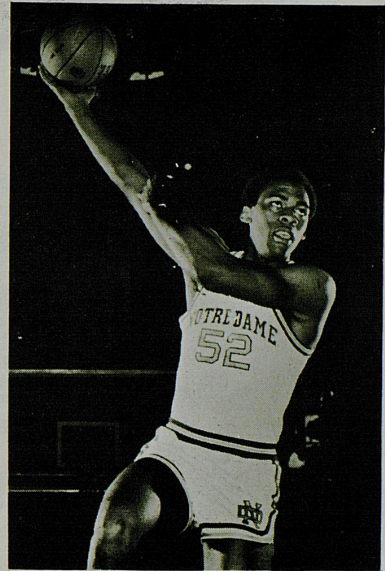
Where
 fresh things
 are happening.

SHOP A & P AND RECEIVE QUALITY VALUE.



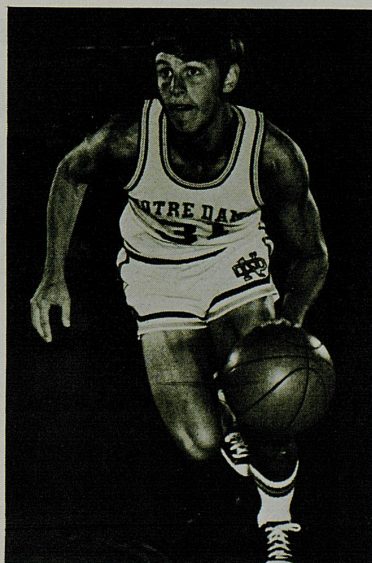
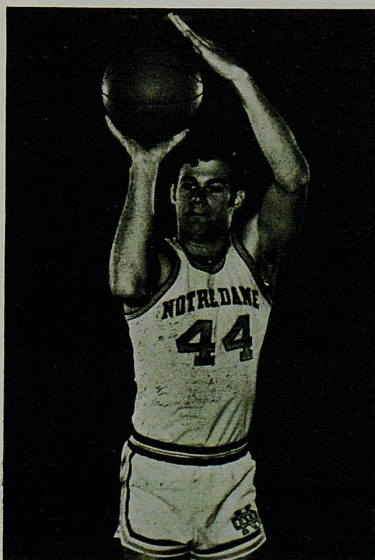
34 AUSTIN CARR
6-3 — 200 — Guard — Captain
Senior — Washington, D. C.

Meet the Fighting Irish



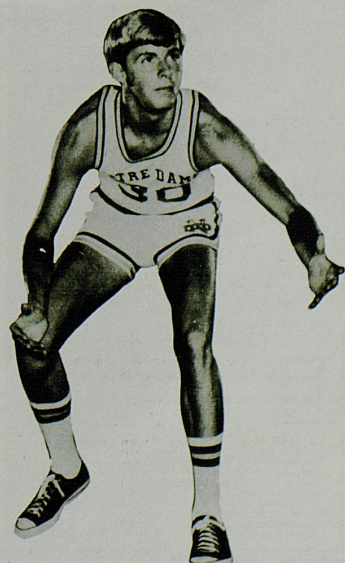
43 SID CATLETT
6-8 — 220 — Forward-Center
Senior — Washington, D. C.

44 DOUG GEMMELL
6-3 — 185 — Forward
Junior — Irvington, N. J.



31 JOHN EGART
5-11 — 165 — Guard
Sophomore — Park Ridge, Ill.

40 BILL HINGA
6-7 — 190 — Forward
Sophomore — Fort Wayne, Ind.





For your convenience all McDonald's will be open December 29 for all UK and Notre Dame fans.

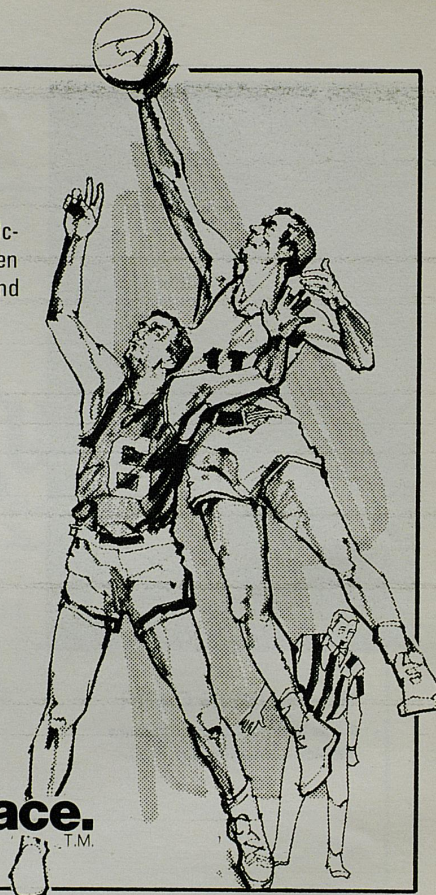
"OUR QUALITY IS OFTEN IMITATED - NEVER DUPLICATED"

Before or after the ball game

Make your first stop at McDonald's. Whether you have a party of two, four, or twenty, we can serve you in a few seconds each. McDonald's hamburgers are made of 100% beef, government inspected and ground fresh daily. They're served piping hot and delicious on a toasted bun. Come in today . . . you'll get fast, cheerful courteous service . . . plenty of parking and the tastiest food in town at extra thrifty prices.

McDonald's is your kind of place.

10 CONVENIENT LOCATIONS TO SERVE YOU



**RIGHT SIZE!
RIGHT PRICE!
RIGHT NOW!**

SUPER-BRITE 25" CONSOLE COLOR TV

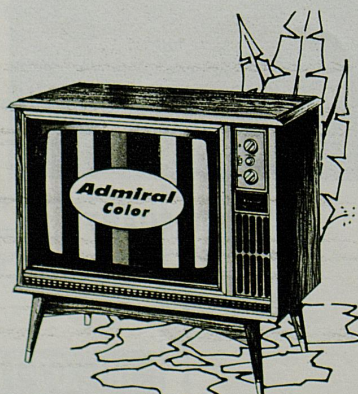
The DENNISON Model 5L5101
25" (diag. meas.)

Elegantly detailed contemporary console features Walnut grained finish on hard-board. Includes 315 sq. in. Super-Brite picture tube. Admiral Automatic Fine Tuning (AFC) to "lock-in" perfect picture. Instant Play, and Super Scope VHF/UHF tuning system.

SPECIAL FEATURES

- Big, 180 sq. in. Super-Brite Color Picture Tube
- Admiral Solid State "Super Scope" VHF/UHF tuners
- Hybrid Solid State/Tube Chassis
- Admiral Automatic Degausser

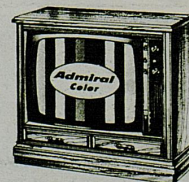
3 YEAR ADMIRAL WARRANTY ON COLOR PICTURE TUBES. Picture tube warranted to original owner to be free from defects for 3 years. Admiral's obligation is limited to supplying a rebuilt tube in exchange for a defective tube. Service and installation costs to be paid by owner. Warranty not effective unless registration card is mailed to Admiral within 3 days after delivery.



SEE YOUR

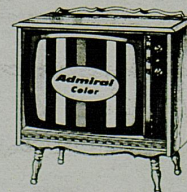
Admiral® DEALER

23" COLOR TV



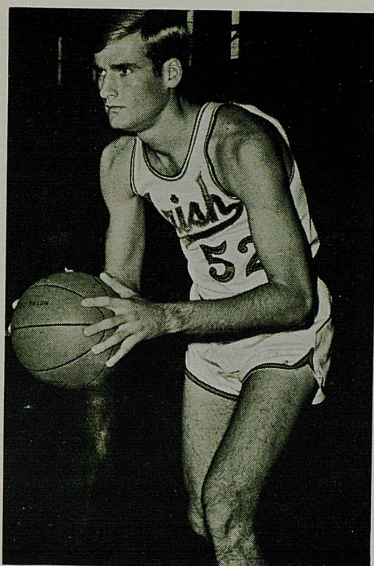
The ALHAMBRA Model 3L3428
23" (diag. meas.)

Distinctive Pecan finished cabinet with Mediterranean elegance. Features Admiral Super-Brite picture tube, Automatic Fine Tuning Control (AFC), Instant Play, and Super Scope VHF/UHF tuners.



The BAYTOWN Model 3L3425
23" (diag. meas.)

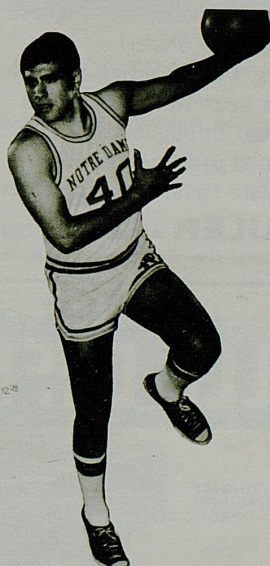
Charming Early American Cabinetry, warm Maple grained finish. 295 sq. in. Super-Brite picture tube, Automatic Fine Tuning (AFC), Instant Play, Super Scope VHF/UHF tuners.



41 JIM HINGA
6-4 — 200 — Forward-Guard
Senior — Muncie, Ind.



42 COLLIS JONES
6-7 — 203 — Forward
Senior — Washington, D. C.

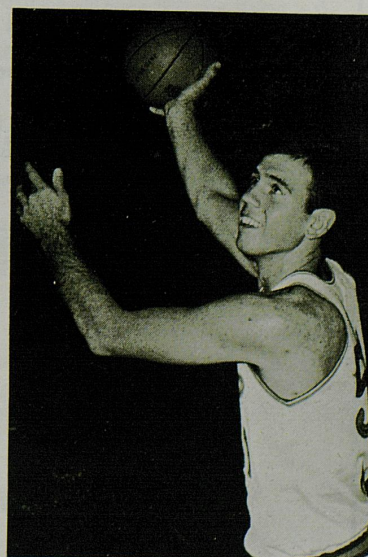


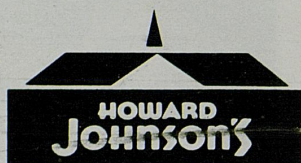
30 BILL LUCAS
6-4 — 190 — Guard
Sophomore — Oak Park, Ill.

35 JACKIE MEEHAN
6-1 — 181 — Guard
Senior — Philadelphia, Pa.



52 JOHN PLEICK
6-8 — 236 — Center
Senior — El Segundo, Calif.





motorlodges

restaurants

HOWARD JOHNSON'S

RESTAURANTS and MOTOR LODGES

4 RESTAURANTS

EASTERN PARKWAY at PRESTON ST.
(5 Minutes from Freedom Hall)

DIXIE HIGHWAY — DIXIE MANOR CENTER

2 MOTOR LODGES

SHELBYVILLE ROAD at WATTERSON EXPRESSWAY
DOWNTOWN at 1st & JEFFERSON STS.

Insist on SHULER and get the best!

For proven design efficiency . . . highest reliability . . . longest service life . . . *best buy Shuler!*

In trailer axles, front steering axles, and brakes . . . Shuler quality leads the field. And in the field . . . Shuler leads with distributors located throughout the U. S. and Canada . . . and strategically located parts inventories.

Get the complete facts. Send for descriptive literature today.



SHULER AXLE DIVISION

2901 SOUTH 2ND STREET, LOUISVILLE, KENTUCKY 40208



LOUISVILLE CHEMICAL CO.

JANITOR SUPPLIES

★ CONTINUOUS SERVICE SINCE 1898 ★

- MOPS • BROOMS • BRUSHES • MOP WRINGERS
- BUCKETS • SWEEPING & CLEANING COMPOUNDS
- SOAPS, OILS, POLISH • DISINFECTANTS • INSECTICIDES
- GARBAGE RECEPTACLES

DISTRIBUTOR FOR FLOOR WAXES & SEALS
INDUSTRIAL TOILET TISSUE & TOWELS
ADVANCE FLOOR EQUIPMENT & VACUUMS

601 E. Jefferson

Louisville, Ky. 587-8424

PEST CONTROL & TERMITE SERVICE



855 Angliana Ave.

Lexington, Ky. 254-0378

WILSON FREIGHT CO.

Direct Service To The East

FRED KASEY-MANAGER

2600 Watterson Tr.

267-7481



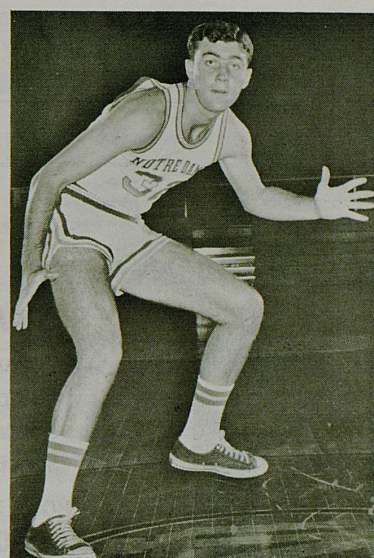
53 JIM REGELEAN

6-8 — 195 — Center
Sophomore — Lincoln, Neb.



45 DON SILINSKI

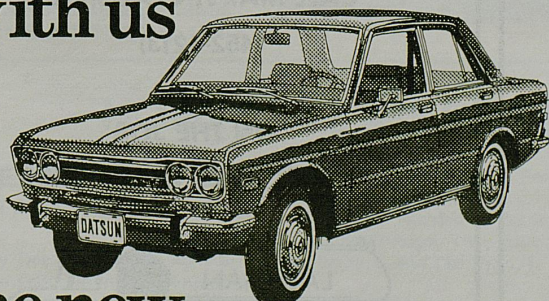
6-3 — 190 — Forward
Sophomore — Pittsburgh, Pa.



32 TOM SINNOTT

6-4 — 201 — Forward-Guard
Senior — Elizabeth, N. J.

**Come celebrate 1971
with us**



**the new
Datsuns are here!**

The best value in economy cars is even better in 1971.

Come in and see what Datsun gives you in 1971 that others still charge extra for.

For instance, the 1971 4-Door 510

Sedan gives you—

- 96 HP overhead cam engine
- Whitewall tires
- Tinted glass
- Fully reclining bucket seats
- Nylon carpeting
- Safety front disc brakes
- Two-speed electric windshield wipers

Datsun will make 1971 one of your best years. It's ours.

DATSUN PRODUCT OF NISSAN

Drive a Datsun...then decide.

SWOPE

CHRYSLER-PLYMOUTH-DATSUN

4126 Shelbyville Rd.

897-1841



INDEPENDENT

BOXMAKERS, INC.

"Corrugated
Shipping
Container
Specialist"

PHONE 778-7341
1344 BEECH STREET
LOUISVILLE, KENTUCKY 40211



 DIAMONDS

"VER-RY FUNNY!"

HANNAH JEWELERS
POPLAR LEVEL CENTER
4318 Naomi Drive 964-8300



ASK A
WILLIAMS
Salesman



He's there
to SERVE
YOU!

WILLIAMS and CO. Inc.

"The House of Metals"

PITTSBURGH, PENNSYLVANIA
CLEVELAND, O. • CINCINNATI, O. • COLUMBUS, O.
TOLEDO, O. • LOUISVILLE, KY. • CHARLESTON, W. VA.

CALL MARVIN LAUSMAN
(452-6213)

for
ON THE JOB
DIESEL FUEL DELIVERIES



LAUSMAN OIL CO.
- SINCE 1951 -

4507 LOWE RD. LOUISVILLE, KY.

452-6213

FUEL OILS and GASOLINE
WHOLESALE and RETAIL

COACH JOHNNY DEE

HEAD BASKETBALL COACH

Reaching the pinnacle of collegiate basketball is not an easy task, but Johnny Dee may be in the final stages of a remarkable resurgence at Notre Dame. No one has probably done more for Irish cage fortunes in recent years than Dr. John F. Dee, Jr., Ph.B., J.D. and at the present the architect of one of the nation's most promising basketball programs.

A fourth consecutive 20-victory season, a goal never achieved in 72 years of Notre Dame basketball, is one of the prime targets for Dee in 1970-71.

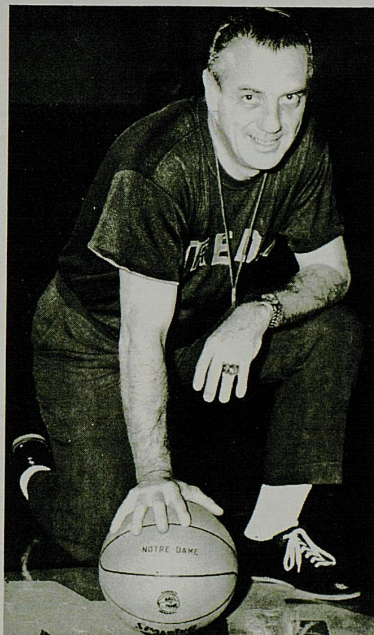
Twenty victories could earn a tournament bid and victory No. 4 this season will be Dee's 100th at Notre Dame.

Dee took over the Notre Dame coaching reins at the beginning of the 1964-65 campaign. In six seasons his teams have compiled a 96-71 record, including a 62-24 tournament victory since 1958, a 112-82 rout of Ohio University in which Austin Carr set a tournament mark of 61 points.

Two seasons ago the Irish finished 20-7, losing their first NCAA tournament game. Three seasons back Notre Dame was 21-9, and a third place finish in the National Invitational Tournament. With a good crop of returning veterans this year, and an excellent group of incoming freshmen, hopes are high that Notre Dame's resurgence in basketball will continue.

Including his professional career, Dee's overall coaching mark is 324 victories and 187 defeats. His college mark, including four seasons at Alabama, stands at 164-96. While at Alabama, from 1952 through 1956,

his teams won one Southeastern Conference title with an unbeaten league record. He coached the Denver Truckers in the National Industrial League from 1956 through 1962, winning one title and finishing second three times. He was with the Kansas City Steers in the American Basketball League for one season.



Over the years he has taught pre-law, run an executive training program, tried out for the Baltimore Colts, run for the legislature of Colorado, served on the cabinet of the mayor of Denver, and has been sworn in to practice law before the United States Supreme Court. He is a partner in the Denver Law firm of Calvert, Calvert and Dee.

The Notre Dame coach designed the shoes and socks his squad members wear and is also credited with initiating the hand-foul indicators used by basketball scorekeepers and with marking the official scorer's position by use of a striped banner.

Dee, 47, was born in Cedar Rapids, Iowa, but received his secondary education at Loyola Academy in Chicago where he starred in football, basketball and track.

Though his college education was interrupted by service with the Coast Guard in World War II, Dee attended Notre Dame from 1944 to 1946, earning a spot on the Irish basketball varsity as a forward. He also holds the unique distinction of selling football programs one fall weekend and starting at quarterback on the Irish football team the next.

Transferring to Loyola of Chicago for his senior year, Dee graduated from there in 1947. Following his graduation he coached in Chicago high schools and attended Notre Dame law school during the summers. He received his law degree in June of 1952, and soon was hired by the University of Alabama as head basketball and assistant football coach.

John and his wife, Katherine, have three children: Melinda, Dennis and John III.

NOTRE DAME ASSISTANT COACHES...

GENE SULLIVAN ASSISTANT COACH

Often Johnny Dee refers to his staff as "the finest assistant coaches in the country." He's talking about Gene Sullivan and Tom O'Connor.

Sullivan is beginning his fourth season on the job. His total knowledge of the game and his dedication to his duties has sometimes prompted Dee to chase him out of the office at night to spend some time with his family.

A native of Chicago, Sullivan attended Schurz High School where he was appointed captain by his teammates in the 1948-49 season, and was picked as the most valuable player. In 1949 he entered Notre Dame and graduated in 1953 with cum laude honors, earning a Masters Degree in Education two years later.

After two years in military service, Sullivan became head basketball coach at Loyola Academy in 1957. In the next 10 years, his teams won 295 and lost 148. Included in his overall record are three Catholic League championships and four second place finishes. His teams won three DePaul University

Tournament titles and one Fenwick Tournament championship.

Sullivan is married to the former Elaine Brown of Chicago. They have two daughters, Tracy, 5, and Teri Lynn, 1.



SULLIVAN



O'CONNOR

TOM O'CONNOR FRESHMAN COACH

Tom "Buzzy" O'Connor is beginning his third season as freshman basketball coach, and with the fine crop of incoming athletes

at his disposal, improvement on last year's 6-9-1 record seems certain.

O'Connor, who shares scouting duties with Gene Sullivan, has an ambitious schedule lined up for his squad — including games against Purdue, Marquette, Creighton, Butler, DePaul, Illinois and Bradley.

A graduate of Loyola University in Chicago in 1960, O'Connor played four seasons for the Ramblers, captaining the team during the 1959-60 campaign. Now 32, O'Connor began his coaching career as an assistant in basketball and football at Loyola Academy in Wilmette, Ill. He became head coach at Gordon Tech in 1962, his teams winning 87 and losing 45 while capturing three undisputed North Section championships in the Chicago Catholic League.

Two of his teams participated in the National Catholic Knights of Columbus Tournament in Washington, D.C. He coached one season at St. Ignatius High in the Chicagoland Prep League. His six-year-high school coaching mark is 100-55.

In 1968, O'Connor received a Masters Degree in history from Loyola. He is married to the former Merily Smith of Chicago. They have one son, Tom, 2.



ACE PRODUCTS
Quality Built Automotive Parts
Remanufactured and Distributed by
D & W Sales & Service, Inc.
 800 West Main Street
 Louisville, Kentucky
 Kenneth H. Dolleris
 President

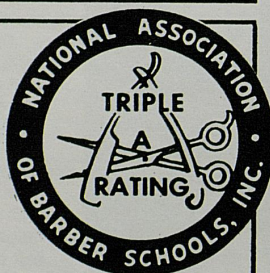
Support Our Advertisers

A Profitable Career in Barbering
 & Men's Hair Styling Awaits You -
 Day & Evening Classes -
 For Men & Women



V.A. Approved

1230 South Third Street
**KENTUCKY COLLEGE
 OF BARBERING INC.**

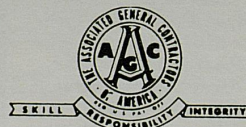


634-0521

One of the Nation's Leading Barber Training Institutes

"MAY THE BEST TEAM WIN"

K. A. BARKER CONSTRUCTION COMPANY
LOUISVILLE ASPHALT COMPANY, INC.



1710 S. Floyd St.
 Louisville, Ky. 40217

Phone:
 636-3411

 MAY THE WIND BE ALWAYS
 AT YOUR BACK! GO***GO

NOTRE DAME

 *HOLY ROSARY ACADEMY *
 *STUDENTS AND FACULTY *
 *4801 Southside Drive *
 *Louisville, Kentucky 40214 *

WELDERS SUPPLY COMPANY

of Louisville, Inc.

AIRCO DISTRIBUTORS

Welding & Cutting Gases
 Apparatus & Supplies

Arc Welders . . . National Carbide

LOUIS W. WRIGHT, Owner

335 Boxley Ave. Louisville, Ky.
 637-4771 — 637-4772

SUPPORT YOUR LOCAL POLICE
 SUPPORT LAW AND ORDER

PASSENGER AND FREIGHT ELEVATORS

MARTIN A.
CEDER
INC.

LOUISVILLE, KY.
 2520 W. Market St.
 Phone 502-778-1671

LEXINGTON, KY.
 1202 Industry Road
 Phone 606-2

EVANSVILLE, IND.
 163 S. Third Avenue
 Phone 812-423-7771

PASSENGER AND FREIGHT ELEVATORS

Fighting Irish 1970-71 Outlook

"Austin Carr should be the outstanding collegiate basketball player in the nation next season," That was Adolph Rupp talking last March after his Kentucky Wildcats had eliminated Notre Dame from the NCAA tournament despite a 52-point show at Ohio State's St. John Arena.

Notre Dame coach Johnny Dee agrees. And when Rupp and Dee agree on a subject that's big news. Their friendly disagreements over the merits of one another's schedules can be put aside when the subject is Carr — the 6-foot-3 senior guard who hopefully will lead to their fourth consecutive 20-victory season and a berth in the NCAA tourney for the third season in a row.

Best Competition

Another super-tough schedule has been lined up by Dee, who believes in playing the best competition available.

An indication of the upsurge in Notre Dame basketball interest was apparent near the end of last season when season tickets for the 1970-71 campaign were put on sale. Carr set 13 individual scoring records last season — including a single season total of 1,106 points and a single game high of 61 in an NCAA victory over Ohio University. Fans who are expected to jam Notre Dame's 11,345 seat arena this winter, and those who watch the Irish on the road, will most certainly see more records fall.

In Carr's supporting cast will be Collis Jones, a 6-7 senior who averaged 18.6 last season and Sid Catlett, another 6-8 senior who scored at an 8.6 pace while in the starting line up part-time. Like Carr, Jones and Catlett are from Washington, D. C.

Jackie Meehan, the 6-1 Philadelphian, is back to trigger the offense. Tom Sinnott, the 6-4 swingman from Elizabeth, N.J., with a 5.1 scoring average and Jim Hinga, a 6-4 handyman from Muncie, Ind., also are back. Six-foot-eight John Pleick, tripped up by some scholastic shortcomings after 16 games, returns in good academic standing. He was averaging nine points per game before departing, and his 6.7 rebounding mark was third behind Carr's 8.1 and Jones' 12.4.

Meehan's ability as a playmaker oftentimes was overlooked in favor of impressive box score statistics by his teammates, Iowa coach Ralph Miller called him "the best I've seen at hitting the open man," after the Hawkeyes won an NCAA consolation game from the Irish.

Rebounding Ability

Jones' rebounding ability brought praise from opposing coaches all season, and when he popped in 40 points in a 121-114 victory over Butler in addition to collecting 18 rebounds, the 15,000 fans who had jammed Hinkle Fieldhouse for veteran coach Tony Hinkle's farewell had seen a remarkable performance.

Sinnott had a remarkable ability to come off the bench cold, and hit a quick basket or two, and had a tremendous game against Marquette — hitting two overtime baskets and passing off to Carr for a tying layup in the final second of the first overtime. The Irish went on to win.

Only Junior

All the aforementioned players are seniors. Big things are expected from the only junior member of the squad, 6-foot-3 Doug Gemmell. A super hustler, Gemmell had cracked the starting lineup before suffering a broken ankle in the final home game against West Virginia. Of course, he missed the NCAA tournament, but Dee believes he'll be able to regain that starting berth.

Two others listed as sophomores last season, 5-11 John Egart and 6-8 Jim Regelean, missed the entire season and have been granted an extra year of eligibility.

Don Silinski, a 6-3 forward who led the freshman in scoring with a 23.1 average is another sophomore who could help. Also definitely in the picture is Bill Lucas, a 6-4 Chicagoan who was able to play in only seven of the 16 varsity games because of illness and injury. Bill Hinga, a cousin to teammate Jim, averaged 11.1 for the frosh and may be able to help.

The only seniors on last year's squad were guard Mike O'Connell, forward John Gallagher and center Jay Ziznewski.

No Easy Schedule

Last season one observer ranked Notre Dame's schedule as the toughest in the nation — and it's no easier this time around. New names are Northwestern, Santa Clara, Air Force, Creighton and Western Michigan. That quintet replaces Northern Illinois, Kansas, St. Peter's, Tulane and one of two games against West Virginia.

South Carolina, an overtime winner over the Irish in the finals of the Sugar Bowl tournament last season, will visit the Athletic and Convocation Center for the home opener on Dec. 5.

As Dee tells it, "We play the favorite in the Pacific Eight Conference, UCLA; the favorite in the Atlantic Coast Conference, South Carolina; the Southeastern Conference favorite, Kentucky; the Big Ten choice, Illinois; and the No. 1 team in the Western Collegiate Conference, Santa Clara."

"Eight of our opponents were in post-season tournaments last season — five in the NCAA and three in the NIT where two of them, Marquette and St. John's, met in the championship game. UCLA, Kentucky, Santa Clara, Dayton and Villanova were in the NCAA tourney. Duquesne was the other NIT entry."

"Seven of our opponents won 20 or more games last season, highlighted by UCLA's 28-2 mark," continued Dee, who is beginning his seventh season at the Notre Dame helm.

12 Records

Last season's Notre Dame team set 12 team records, including a season scoring mark of 2,711 points. The 93.5 point per game average ranked fifth nationally, a truly outstanding mark that is even more prominent when you consider the Irish were no world-beaters at the free throw line.

Aside from Carr, who connected on 83 per cent of his one point chances, the Irish did not have a player above the 70 per cent mark. That's one area where Dee hopes to see some improvement this season.

The club's .482 field goal accuracy rate, headed by Carr's pace of better than 55 per cent ranked 16th in the nation.

Zone Defense

Sometimes abandoning the strict man-to-man defense employed in Dee's first five seasons, the Irish at times befuddled foes with a match-up zone. Opponents may see more of it this season, because the veteran members of the squad will be more adept to its intricacies.

Another goal in pre-season practice will be preparation to cope with a variety of unorthodox zone defenses set up in effort to stop Carr.

Highlight of the 13-game home schedule will be the appearance of Johnny Wooden and his national champion UCLA Bruins on Saturday afternoon, Jan. 23. Ralph Simpson, one of the nation's super sophs last season, will lead his Michigan State teammates into the ACC three days later. Indiana, solidified by the school's best freshman club in history, will pay a visit on Dec. 15. And there's a New Year's Eve party scheduled against Santa Clara on Dec. 31.

Notre Dame's fourth victory this season will be Dee's 100th since taking over the Irish at the start of the 1964-65 campaign. By March, it's a generally standard belief that Dee will be well on the way to 200.

"At Your Beck-'n-Call"

Complete Stock
At All Times!

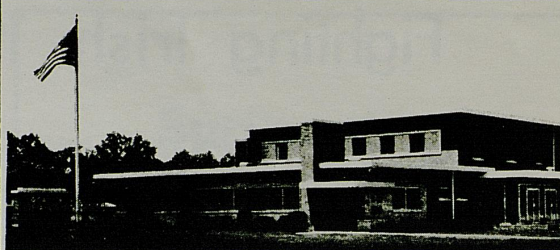
**Dial
582-2261**



**MILL AND INDUSTRIAL
SUPPLY, INC.**

Industry's Service-Supply House

1012 EAST MAIN STREET • LOUISVILLE, KENTUCKY



COMPLIMENTS OF

LOCAL 761, I.U.E.

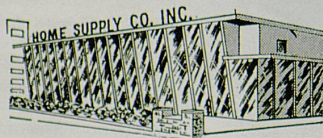
PRESIDENT — DON ROCK

representing the employees at
General Electric, Appliance Park,
and the Apparatus Service Shop,
where 12,000 strong can't be
wrong!

Offices located at 5153 Poplar
Level Road, Louisville, Ky. 40219

969-4461

**LUMBER and
BUILDING SUPPLIES**



- ROOF TRUSSES
- PLAN SERVICE
- DOORS
- WINDOWS
- CEMENT

- HARDWARE
- PANELING
- PLYWOOD



Dial...

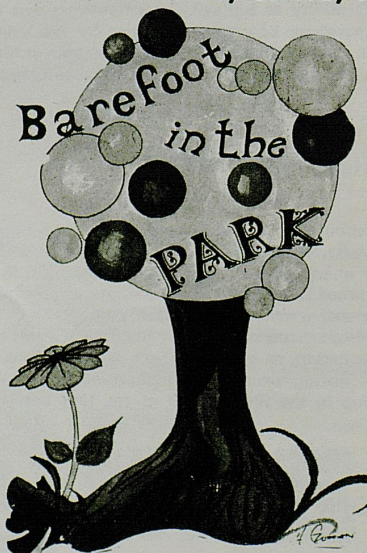
448-6351

Home Supply Co.

INCORPORATED

3720 7TH ST. RD.

NOW SHOWING
Neil Simon's Broadway Comedy Hit



For Reservations Call: 451-4900 (Louisville)
722-8836 (Simpsonville)

Beef 'n' Boards

On Veechdale Road Simpsonville, Kentucky
(Between I-64 and U.S. 60)



Good Luck KENTUCKY NOTRE DAME

ZENITH CHROMACOLOR

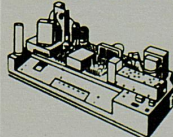


A COMPLETELY NEW
COLOR TV SYSTEM
THAT BRINGS YOU A
COLOR PICTURE
FAR BRIGHTER WITH
TRUER COLORS,
SHARPER DETAIL AND
GREATER CONTRAST
THAN EVER BEFORE IN
TV OF THIS SCREEN
SIZE CATEGORY!

The EDDINGTON • B4030W
New COMPACT CHROMACOLOR and only
Zenith has it! Grained American Walnut color
cabinet. Power Transformer. VHF/UHF Deluxe
Spotlite Panels. 5" x 3" Twin-Cone Speaker.

Fits in right where
you want it . . . den,
living room or bedroom

NEW ZENITH HANDCRAFTED TITAN CHASSIS



combines famous
Zenith Handcrafted De-
pendability with ultra-
sophisticated new
Zenith Solid-State Dura-Modules.

- New Zenith Solid-State Super Video Range Tuning System
- Zenith AFC—Automatic Fine-tuning Control
- Chromatic Brain Demodulator
- Gyro-Drive UHF Channel Selector
- Color Commander Control
- Telescoping Dipole Antenna for VHF Reception
- Clip-on Bow-tie UHF Antenna

AMERICA'S
NUMBER 1
TELEVISION

See Your Zenith Dealer



**Increase your
net worth.**

**Save at
First National Bank.**

